

Data Path : Z:\pestpcbsrv\HPCHEM1\ECD\_P\Data\PP070821\  
 Data File : PP037111.D  
 Signal(s) : Signal #1: ECD1A.CH Signal #2: ECD2B.CH  
 Acq On : 08 Jul 2021 14:48  
 Operator : DD\AJ  
 Sample : AR1242CCC500  
 Misc :  
 ALS Vial : 4 Sample Multiplier: 1

Instrument :  
 ECD\_P  
 ClientSampleId :  
 AR1242CCC500

Integration File signal 1: autoint1.e  
 Integration File signal 2: autoint2.e  
 Quant Time: Jul 09 02:41:03 2021  
 Quant Method : Z:\pestpcbsrv\HPCHEM1\ECD\_P\methods\PP070621.M  
 Quant Title : GC EXTRACTABLES  
 QLast Update : Wed Jul 07 08:32:32 2021  
 Response via : Initial Calibration  
 Integrator: ChemStation 6890 Scale Mode: Small noise peaks clipped

Volume Inj. : 2 µl  
 Signal #1 Phase : ZB-MR1 Signal #2 Phase: ZB-MR2  
 Signal #1 Info : 30Mx0.32mmx 0.50µ Signal #2 Info : 30M x 0.32mm x 0.25µm

Compound	RT#1	RT#2	Resp#1	Resp#2	ng/ml	ng/ml
-----						
System Monitoring Compounds						
1) SA Tetrachlo...	4.959	3.950	2327631	1395308	51.214	50.990
2) SA Decachlor...	10.990	9.244	2203280	1289942	47.860	46.343
Target Compounds						
3) L1 AR-1016-1	6.279	5.201	647141	378974	372.410	366.725
4) L1 AR-1016-2	6.303	5.221	912867	521711	365.133	364.387
5) L1 AR-1016-3	6.369	5.410	591297	286488	371.256	366.679
6) L1 AR-1016-4	6.476	5.464	489818	208436	371.472	345.328
7) L1 AR-1016-5	6.791	5.692	484908	264601	383.324	342.662
8) L2 AR-1221-1	5.203	4.204	68269	42321	128.720	138.569
9) L2 AR-1221-2	5.308	4.303	109002	64336	269.051	273.288
10) L2 AR-1221-3	5.394	4.392	387947	222581	318.397	299.255
11) L3 AR-1232-1	5.394	4.392	387947	222581	349.152	327.823
12) L3 AR-1232-2	5.984	5.221	490786	521711	823.089	833.521
13) L3 AR-1232-3	6.303	5.410	912867	286488	834.234	862.881
14) L3 AR-1232-4	6.476	5.508	489818	266376	843.678	966.145
15) L3 AR-1232-5	6.573	5.692	368657	264601	958.581	890.103
16) L4 AR-1242-1	6.279	5.201	647141	378974	507.686	502.819
17) L4 AR-1242-2	6.303	5.221	912867	521711	503.479	507.022
18) L4 AR-1242-3	6.369	5.410	591297	286488	514.097	503.124
19) L4 AR-1242-4	6.476	5.508	489818	266376	511.665	516.857
20) L4 AR-1242-5	7.258	6.071	476622	340775	458.307	500.641
21) L5 AR-1248-1	6.279	5.201	647141	378974	616.575	600.528
22) L5 AR-1248-2	6.573	5.464	368657	208436	248.329	254.107
23) L5 AR-1248-3	6.791	5.508	484908	266376	293.563	311.269
24) L5 AR-1248-4	7.219	5.692	432250	264601	228.691	260.006
25) L5 AR-1248-5	7.258	6.114	476622	294030	254.659	277.192
26) L6 AR-1254-1	7.188	6.071	302565	340775	168.420	229.544 #
27) L6 AR-1254-2	7.424	6.232	452776	83030	162.771	63.918 #
28) L6 AR-1254-3	7.800	6.651	188896	109507	61.270	51.314
29) L6 AR-1254-4	8.096	6.891	145992	84660	64.273	62.400
30) L6 AR-1254-5	8.524	7.321	31327	27293	12.519	14.559
31) L7 AR-1260-1	7.967	6.798	4155	45792	1.888	33.139 #
32) L7 AR-1260-2	8.217f	6.987	66627	8509	23.951	5.065 #
33) L7 AR-1260-3	0.000	7.138	0	28122	N.D.	16.413 #
34) L7 AR-1260-4	8.822	0.000	18118	0	7.366	N.D. #
36) L8 AR-1262-1	0.000	7.321	0	27293	N.D.	26.283 #
45) L9 AR-1268-5	10.653	0.000	20150	0	1.273	N.D. #

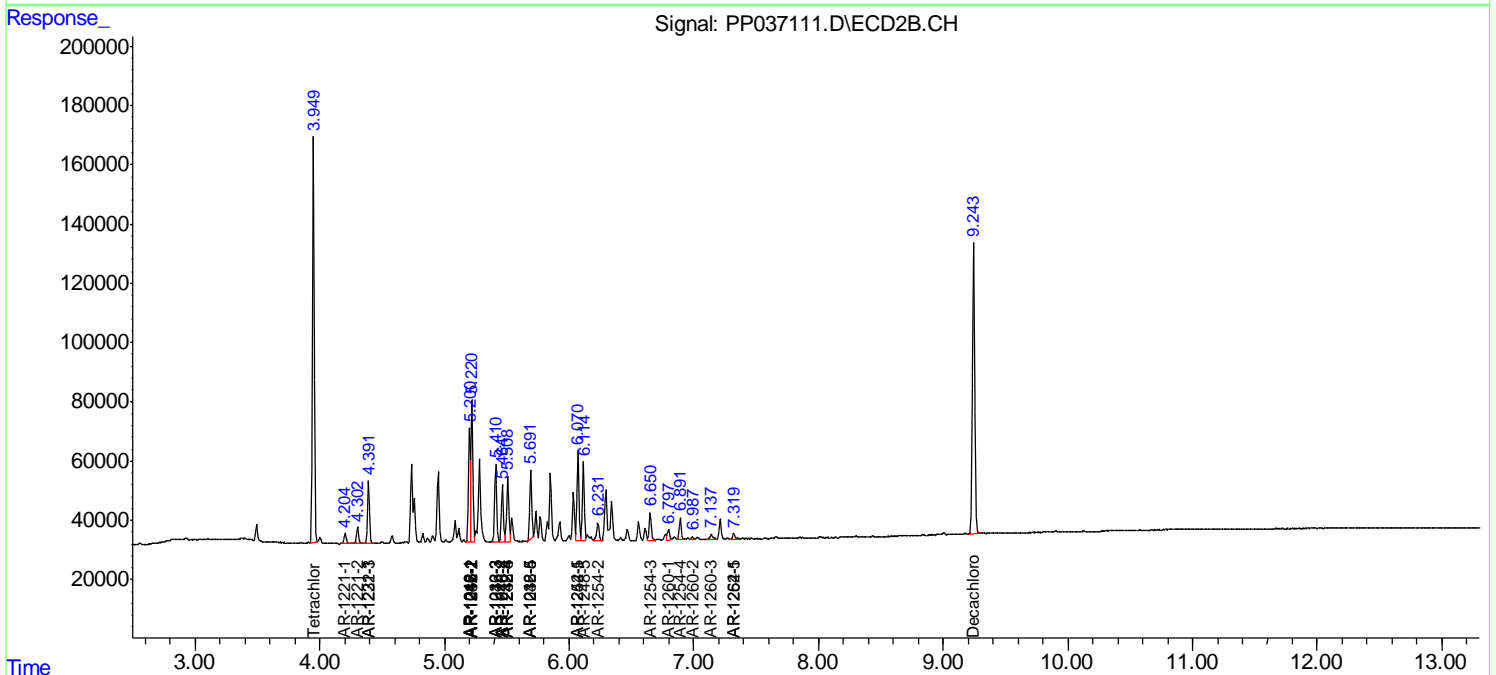
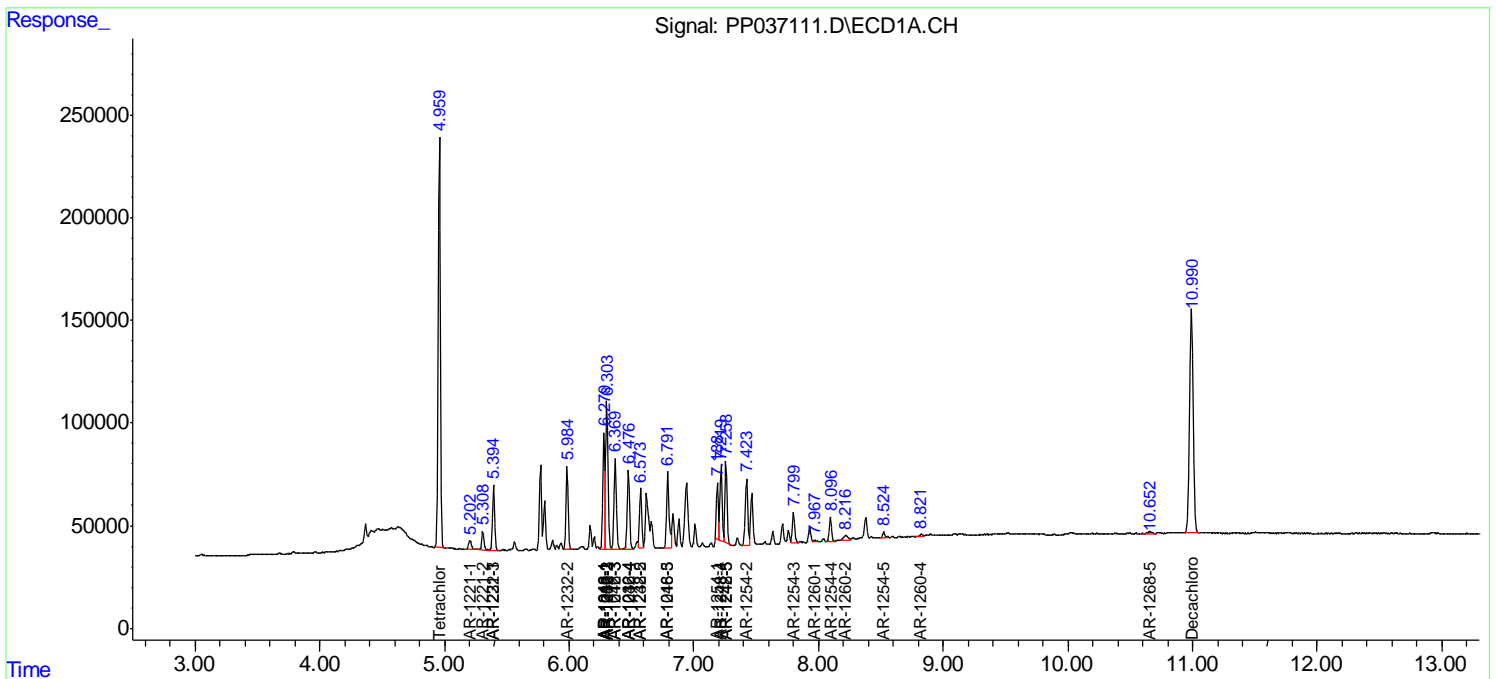
(f)=RT Delta > 1/2 Window (#)=Amounts differ by > 25% (m)=manual int.

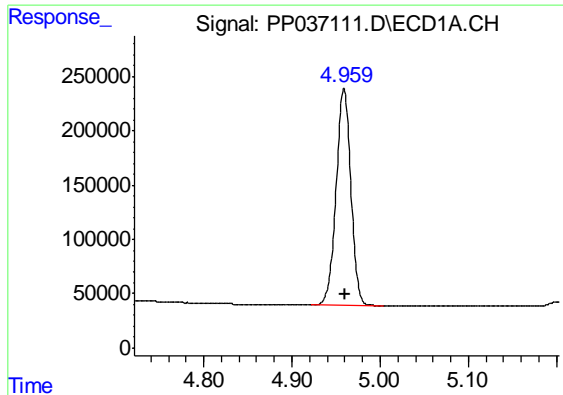
Data Path : Z:\pestpcbsrv\HPCHEM1\ECD\_P\Data\PP070821\  
 Data File : PP037111.D  
 Signal(s) : Signal #1: ECD1A.CH Signal #2: ECD2B.CH  
 Acq On : 08 Jul 2021 14:48  
 Operator : DD\AJ  
 Sample : AR1242CCC500  
 Misc :  
 ALS Vial : 4 Sample Multiplier: 1

Instrument :  
 ECD\_P  
 Client Sampled :  
 AR1242CCC500

Integration File signal 1: autoint1.e  
 Integration File signal 2: autoint2.e  
 Quant Time: Jul 09 02:41:03 2021  
 Quant Method : Z:\pestpcbsrv\HPCHEM1\ECD\_P\methods\PP070621.M  
 Quant Title : GC EXTRACTABLES  
 QLast Update : Wed Jul 07 08:32:32 2021  
 Response via : Initial Calibration  
 Integrator: ChemStation 6890 Scale Mode: Small noise peaks clipped

Volume Inj. : 2 µl  
 Signal #1 Phase : ZB-MR1 Signal #2 Phase: ZB-MR2  
 Signal #1 Info : 30Mx0.32mmx 0.50µ Signal #2 Info : 30M x 0.32mm x 0.25µm

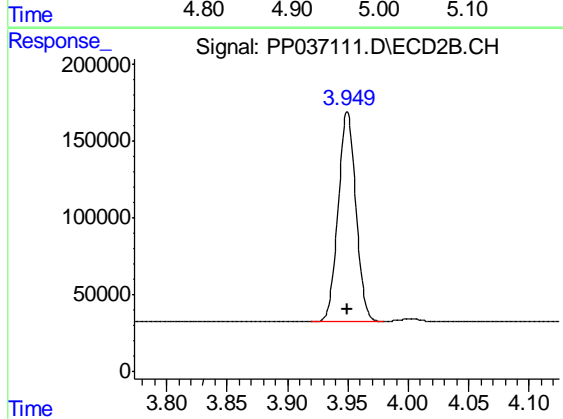




#1 Tetrachloro-m-xylene

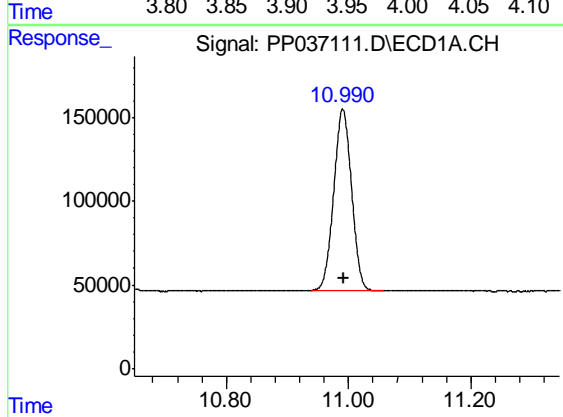
R.T.: 4.959 min  
Delta R.T.: 0.000 min  
Response: 2327631  
Conc: 51.21 ng/ml

Instrument :  
ECD\_P  
ClientSampleId :  
AR1242CCC500



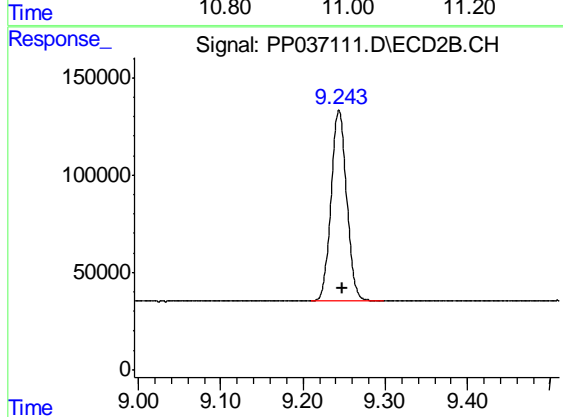
#1 Tetrachloro-m-xylene

R.T.: 3.950 min  
Delta R.T.: 0.000 min  
Response: 1395308  
Conc: 50.99 ng/ml



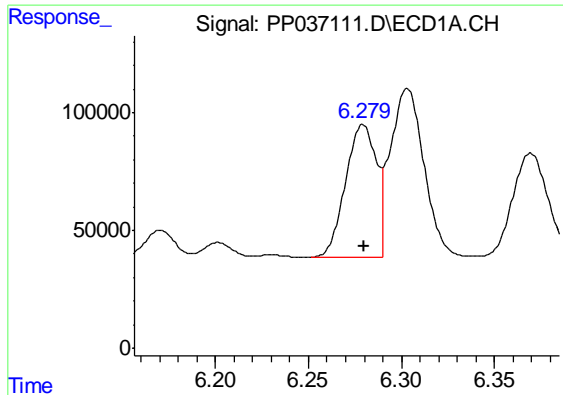
#2 Decachlorobiphenyl

R.T.: 10.990 min  
Delta R.T.: -0.002 min  
Response: 2203280  
Conc: 47.86 ng/ml



#2 Decachlorobiphenyl

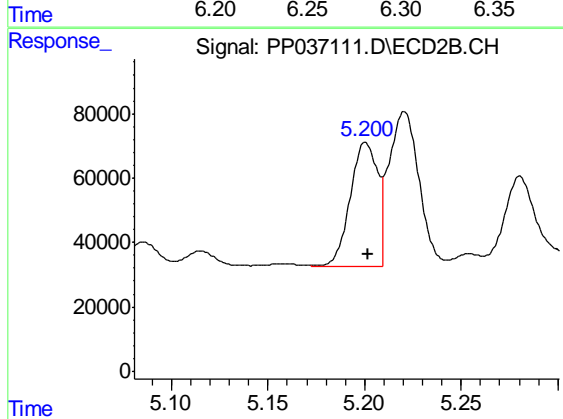
R.T.: 9.244 min  
Delta R.T.: -0.004 min  
Response: 1289942  
Conc: 46.34 ng/ml



#3 AR-1016-1

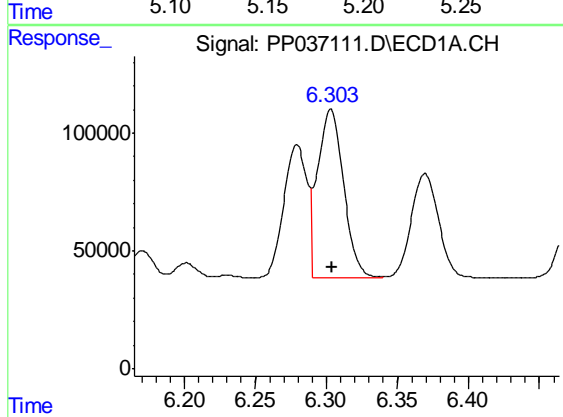
R.T.: 6.279 min  
 Delta R.T.: -0.001 min  
 Response: 647141  
 Conc: 372.41 ng/ml

Instrument :  
 ECD\_P  
 ClientSampleId :  
 AR1242CCC500



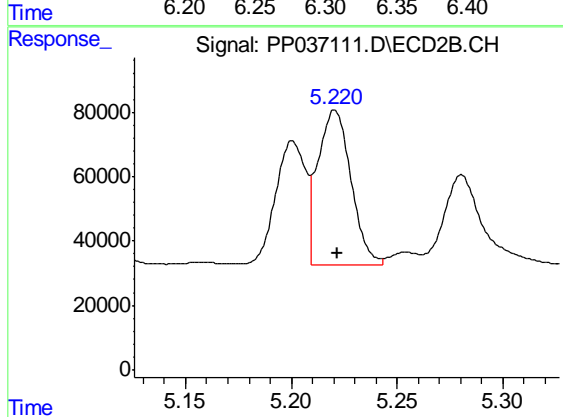
#3 AR-1016-1

R.T.: 5.201 min  
 Delta R.T.: -0.001 min  
 Response: 378974  
 Conc: 366.72 ng/ml



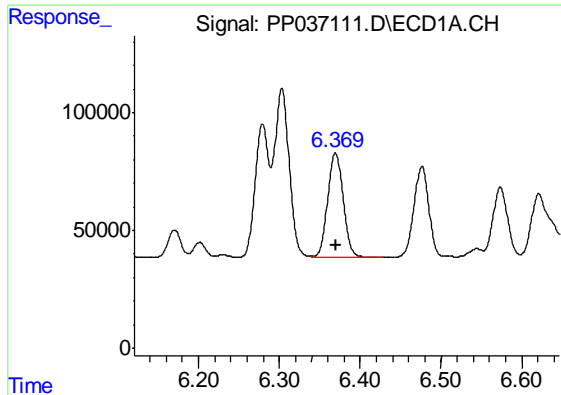
#4 AR-1016-2

R.T.: 6.303 min  
 Delta R.T.: 0.000 min  
 Response: 912867  
 Conc: 365.13 ng/ml



#4 AR-1016-2

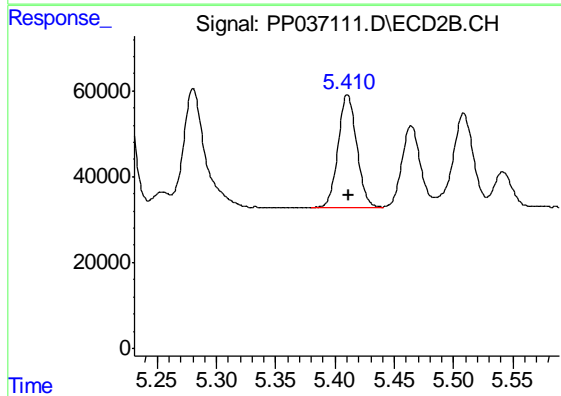
R.T.: 5.221 min  
 Delta R.T.: -0.001 min  
 Response: 521711  
 Conc: 364.39 ng/ml



#5 AR-1016-3

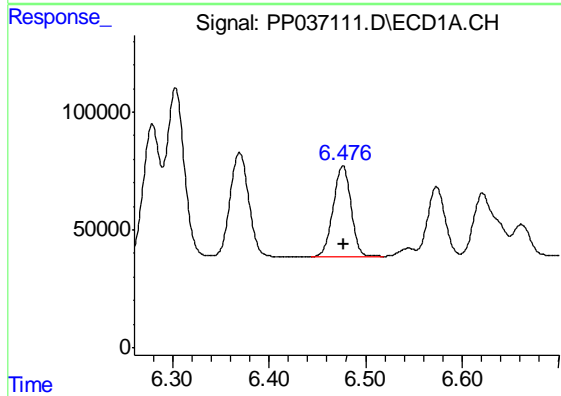
R.T.: 6.369 min  
 Delta R.T.: 0.000 min  
 Response: 591297  
 Conc: 371.26 ng/ml

Instrument :  
 ECD\_P  
 ClientSampleId :  
 AR1242CCC500



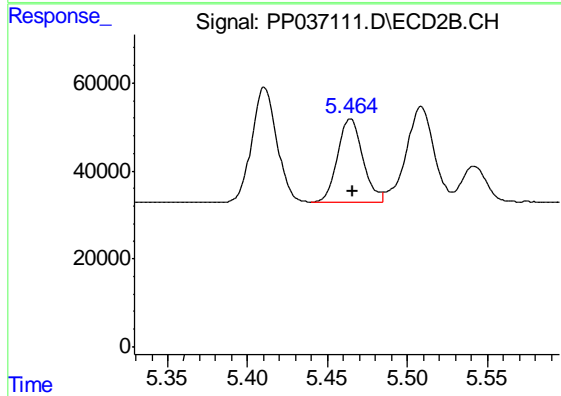
#5 AR-1016-3

R.T.: 5.410 min  
 Delta R.T.: -0.002 min  
 Response: 286488  
 Conc: 366.68 ng/ml



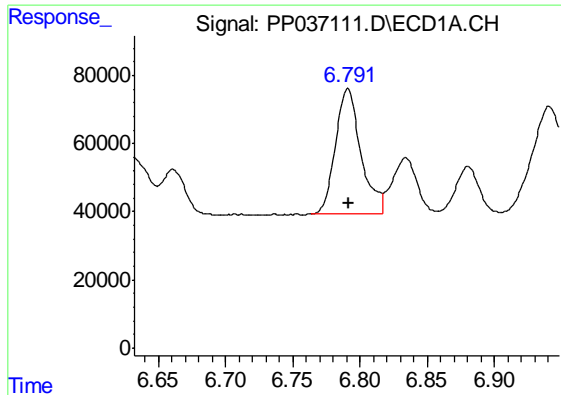
#6 AR-1016-4

R.T.: 6.476 min  
 Delta R.T.: 0.000 min  
 Response: 489818  
 Conc: 371.47 ng/ml



#6 AR-1016-4

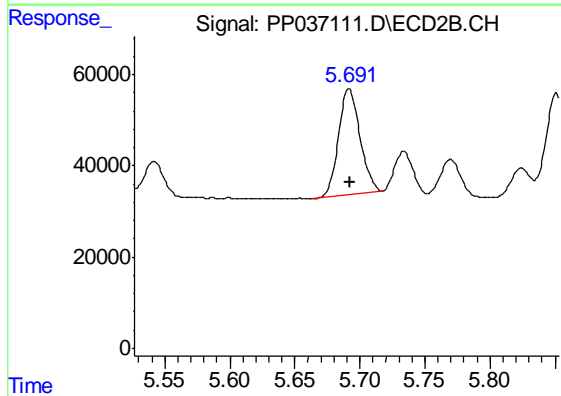
R.T.: 5.464 min  
 Delta R.T.: -0.001 min  
 Response: 208436  
 Conc: 345.33 ng/ml



#7 AR-1016-5

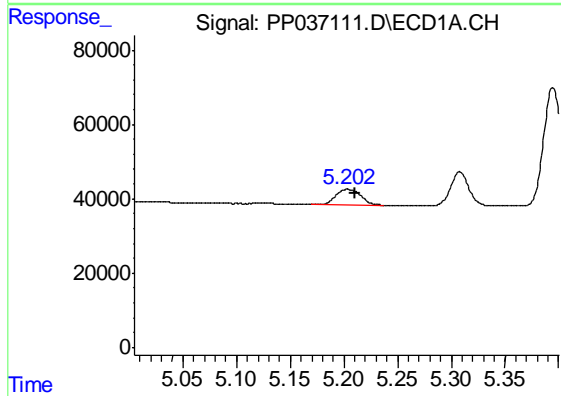
R.T.: 6.791 min  
 Delta R.T.: 0.000 min  
 Response: 484908  
 Conc: 383.32 ng/ml

Instrument :  
 ECD\_P  
 ClientSampleId :  
 AR1242CCC500



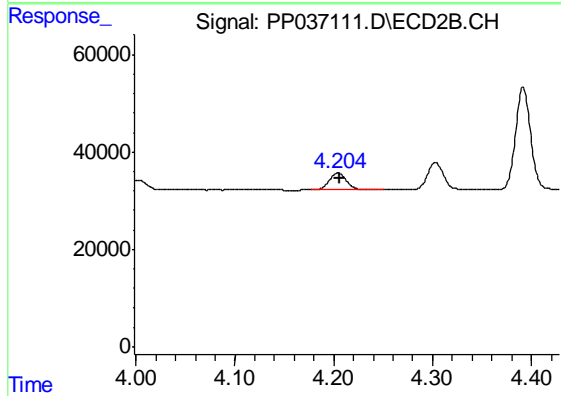
#7 AR-1016-5

R.T.: 5.692 min  
 Delta R.T.: -0.001 min  
 Response: 264601  
 Conc: 342.66 ng/ml



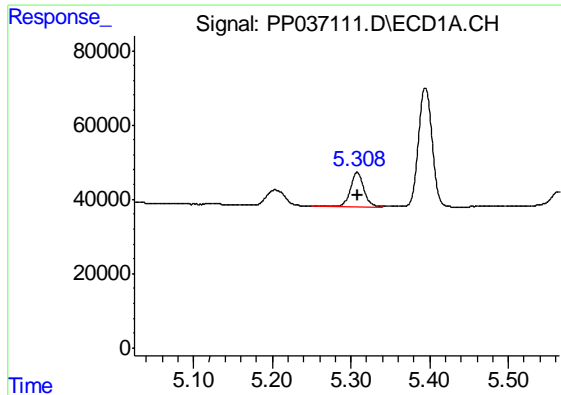
#8 AR-1221-1

R.T.: 5.203 min  
 Delta R.T.: -0.007 min  
 Response: 68269  
 Conc: 128.72 ng/ml



#8 AR-1221-1

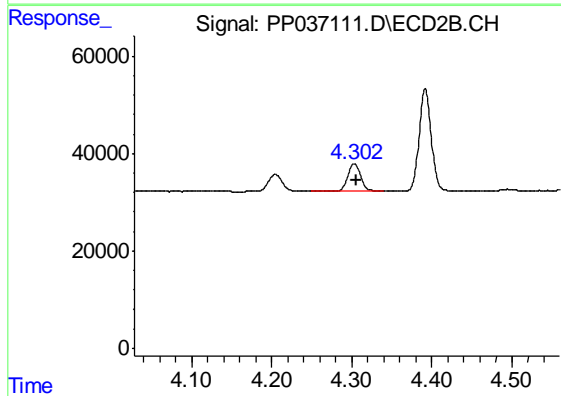
R.T.: 4.204 min  
 Delta R.T.: -0.002 min  
 Response: 42321  
 Conc: 138.57 ng/ml



#9 AR-1221-2

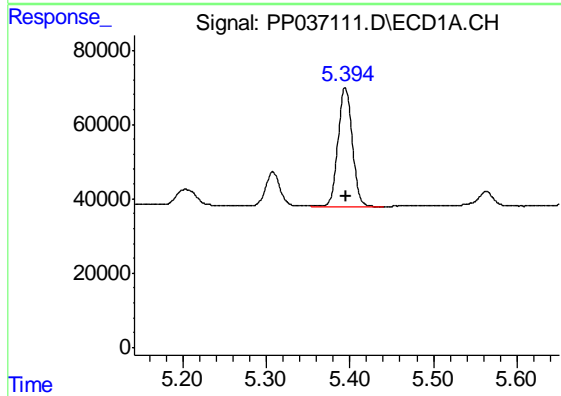
R.T.: 5.308 min  
 Delta R.T.: 0.000 min  
 Response: 109002  
 Conc: 269.05 ng/ml

Instrument :  
 ECD\_P  
 ClientSampleId :  
 AR1242CCC500



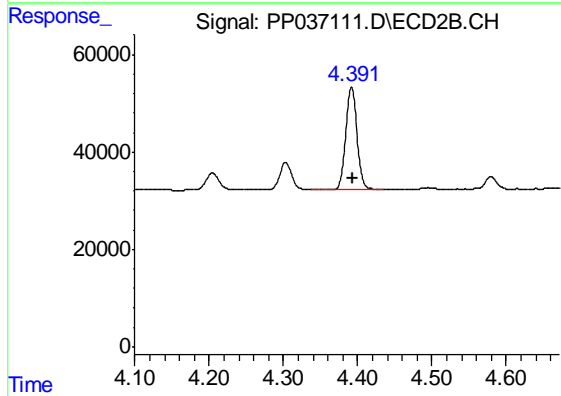
#9 AR-1221-2

R.T.: 4.303 min  
 Delta R.T.: -0.002 min  
 Response: 64336  
 Conc: 273.29 ng/ml



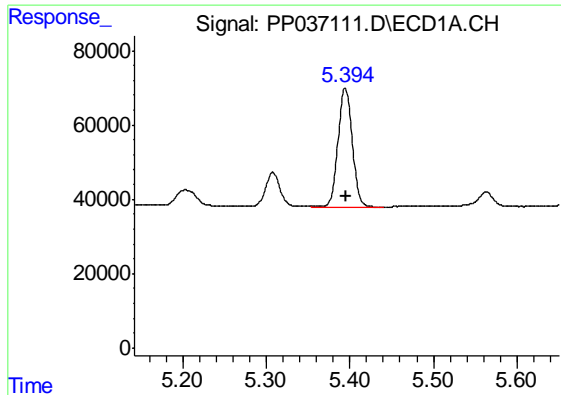
#10 AR-1221-3

R.T.: 5.394 min  
 Delta R.T.: -0.001 min  
 Response: 387947  
 Conc: 318.40 ng/ml



#10 AR-1221-3

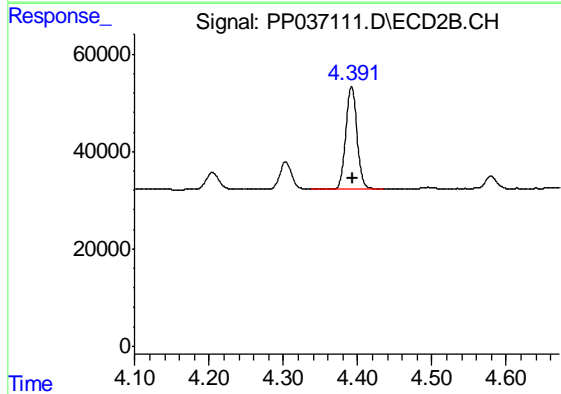
R.T.: 4.392 min  
 Delta R.T.: -0.002 min  
 Response: 222581  
 Conc: 299.26 ng/ml



#11 AR-1232-1

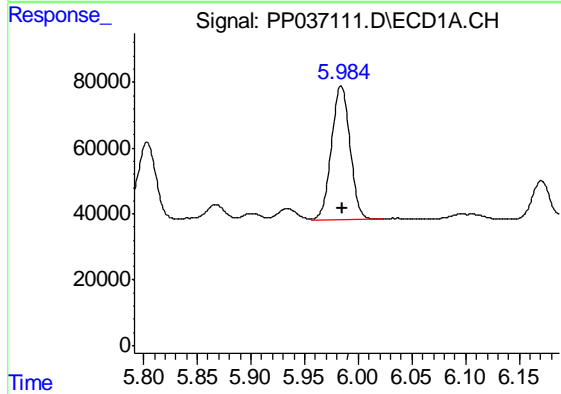
R.T.: 5.394 min  
 Delta R.T.: -0.001 min  
 Response: 387947  
 Conc: 349.15 ng/ml

Instrument :  
 ECD\_P  
 ClientSampleId :  
 AR1242CCC500



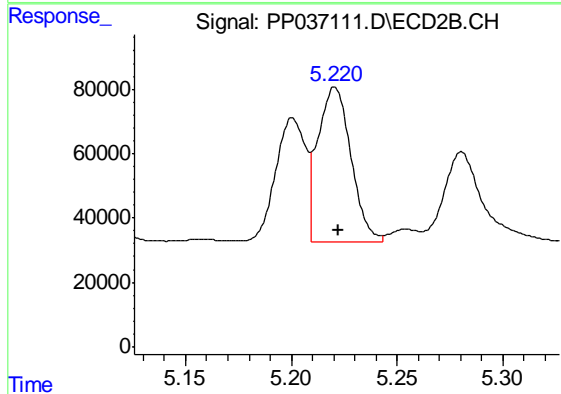
#11 AR-1232-1

R.T.: 4.392 min  
 Delta R.T.: -0.001 min  
 Response: 222581  
 Conc: 327.82 ng/ml



#12 AR-1232-2

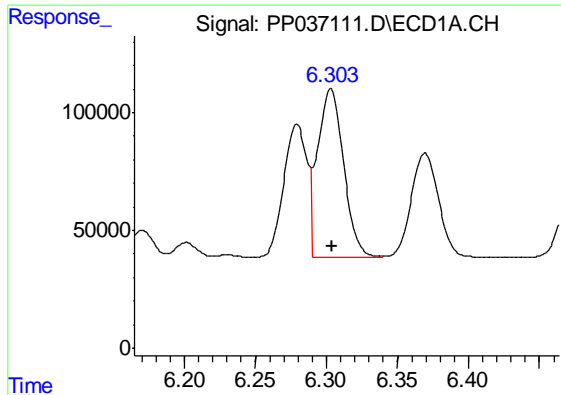
R.T.: 5.984 min  
 Delta R.T.: 0.000 min  
 Response: 490786  
 Conc: 823.09 ng/ml



#12 AR-1232-2

R.T.: 5.221 min  
 Delta R.T.: -0.002 min  
 Response: 521711  
 Conc: 833.52 ng/ml

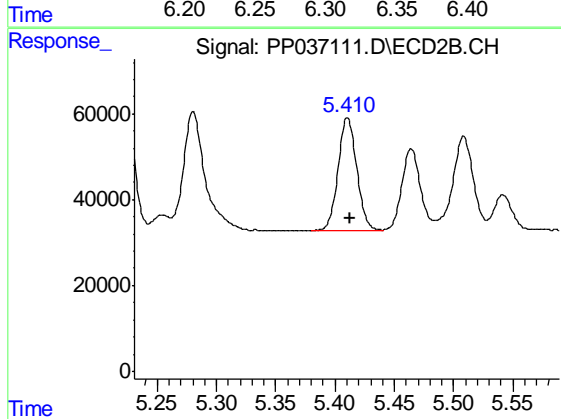




#13 AR-1232-3

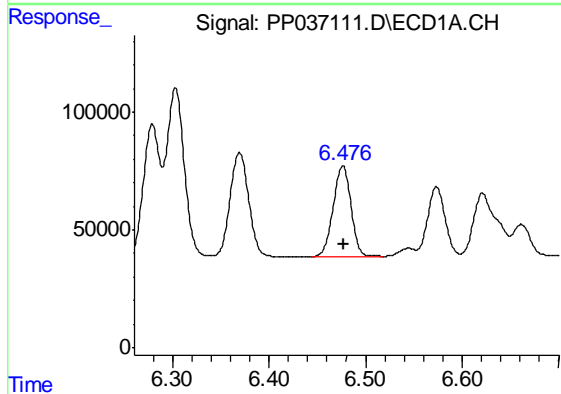
R.T.: 6.303 min  
Delta R.T.: -0.001 min  
Response: 912867  
Conc: 834.23 ng/ml

Instrument :  
ECD\_P  
ClientSampleId :  
AR1242CCC500



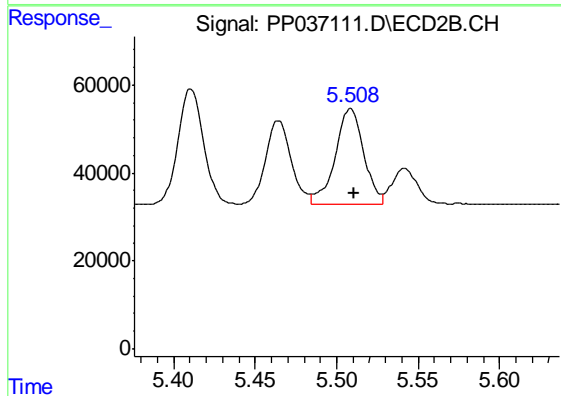
#13 AR-1232-3

R.T.: 5.410 min  
Delta R.T.: -0.002 min  
Response: 286488  
Conc: 862.88 ng/ml



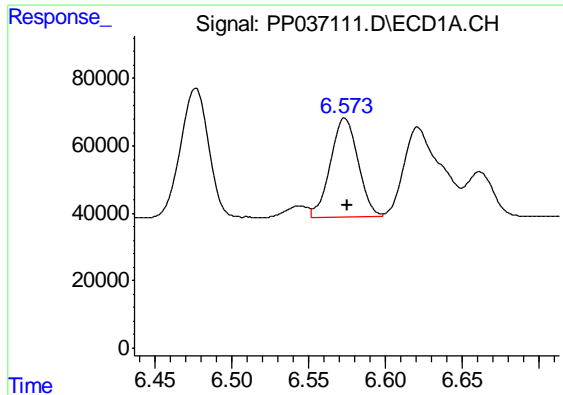
#14 AR-1232-4

R.T.: 6.476 min  
Delta R.T.: -0.001 min  
Response: 489818  
Conc: 843.68 ng/ml



#14 AR-1232-4

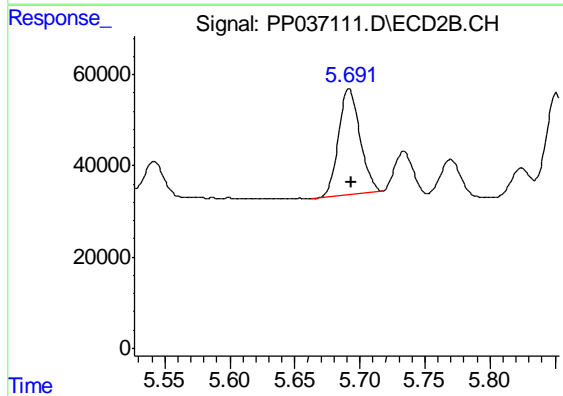
R.T.: 5.508 min  
Delta R.T.: -0.002 min  
Response: 266376  
Conc: 966.15 ng/ml



#15 AR-1232-5

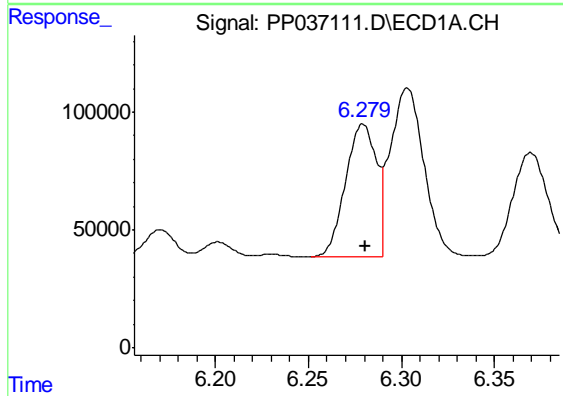
R.T.: 6.573 min  
 Delta R.T.: -0.002 min  
 Response: 368657  
 Conc: 958.58 ng/ml

Instrument :  
 ECD\_P  
 ClientSampleId :  
 AR1242CCC500



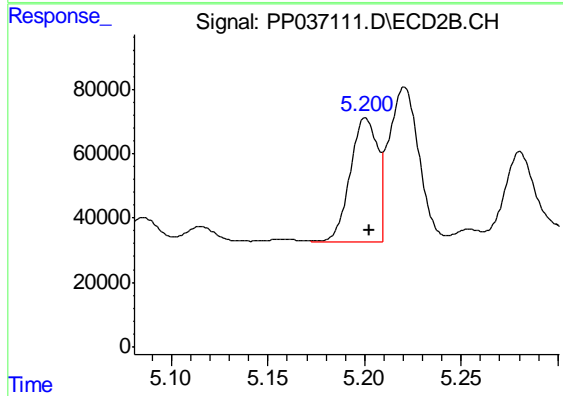
#15 AR-1232-5

R.T.: 5.692 min  
 Delta R.T.: -0.002 min  
 Response: 264601  
 Conc: 890.10 ng/ml



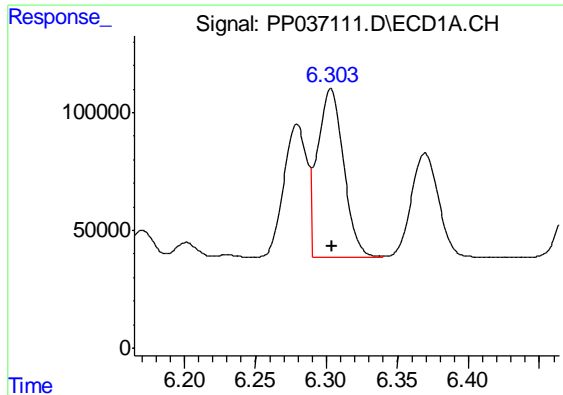
#16 AR-1242-1

R.T.: 6.279 min  
 Delta R.T.: -0.001 min  
 Response: 647141  
 Conc: 507.69 ng/ml



#16 AR-1242-1

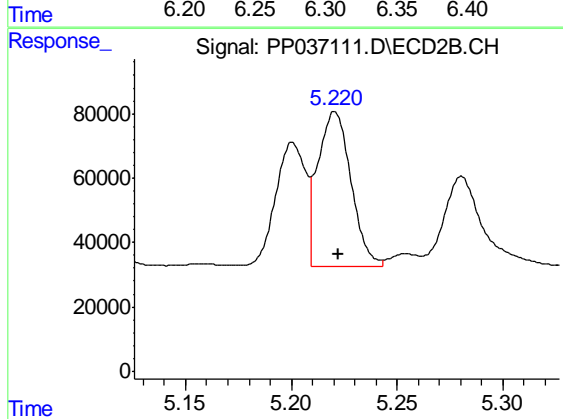
R.T.: 5.201 min  
 Delta R.T.: -0.002 min  
 Response: 378974  
 Conc: 502.82 ng/ml



#17 AR-1242-2

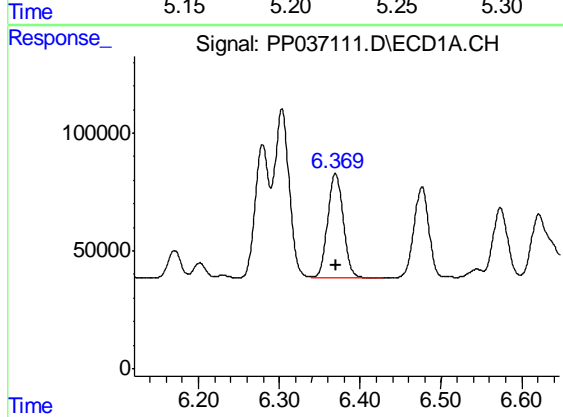
R.T.: 6.303 min  
 Delta R.T.: -0.001 min  
 Response: 912867  
 Conc: 503.48 ng/ml

Instrument :  
 ECD\_P  
 ClientSampleId :  
 AR1242CCC500



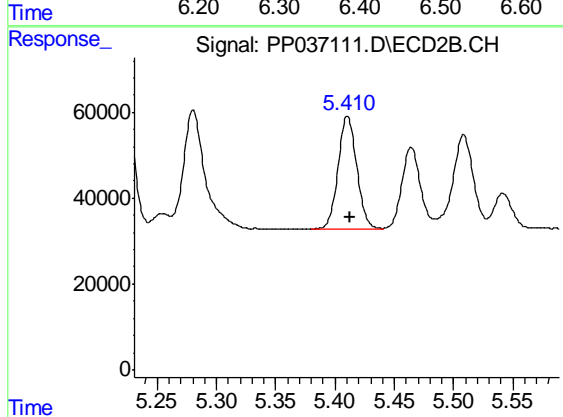
#17 AR-1242-2

R.T.: 5.221 min  
 Delta R.T.: -0.002 min  
 Response: 521711  
 Conc: 507.02 ng/ml



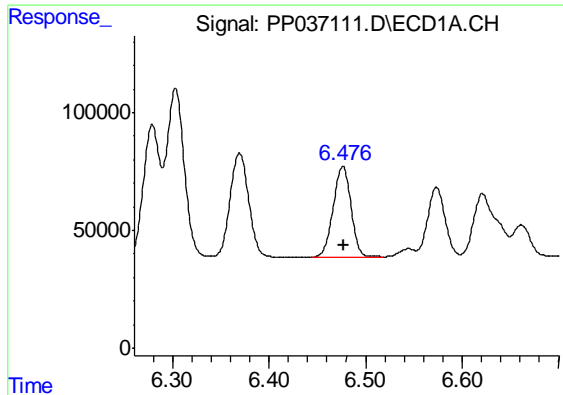
#18 AR-1242-3

R.T.: 6.369 min  
 Delta R.T.: 0.000 min  
 Response: 591297  
 Conc: 514.10 ng/ml



#18 AR-1242-3

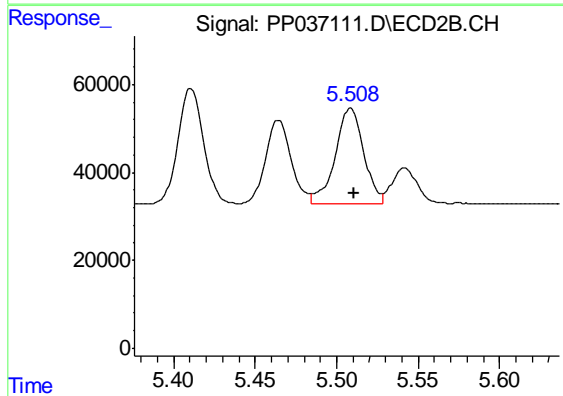
R.T.: 5.410 min  
 Delta R.T.: -0.002 min  
 Response: 286488  
 Conc: 503.12 ng/ml



#19 AR-1242-4

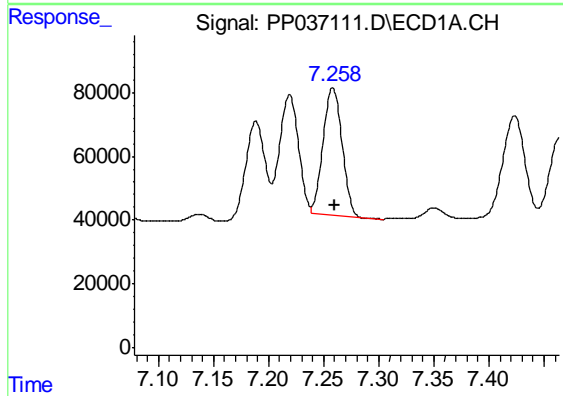
R.T.: 6.476 min  
Delta R.T.: -0.001 min  
Response: 489818  
Conc: 511.66 ng/ml

Instrument :  
ECD\_P  
ClientSampleId :  
AR1242CCC500



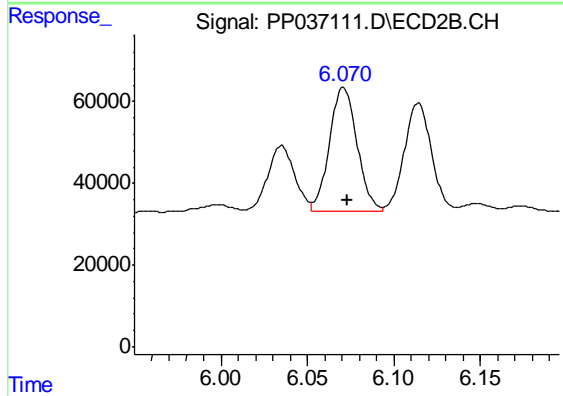
#19 AR-1242-4

R.T.: 5.508 min  
Delta R.T.: -0.002 min  
Response: 266376  
Conc: 516.86 ng/ml



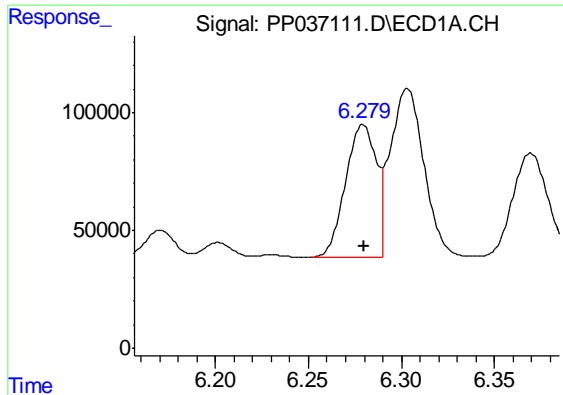
#20 AR-1242-5

R.T.: 7.258 min  
Delta R.T.: -0.002 min  
Response: 476622  
Conc: 458.31 ng/ml



#20 AR-1242-5

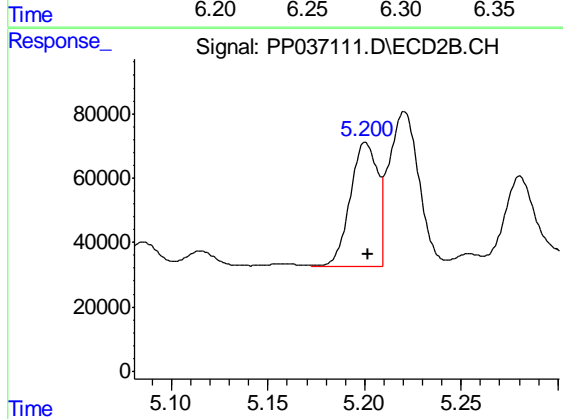
R.T.: 6.071 min  
Delta R.T.: -0.003 min  
Response: 340775  
Conc: 500.64 ng/ml



#21 AR-1248-1

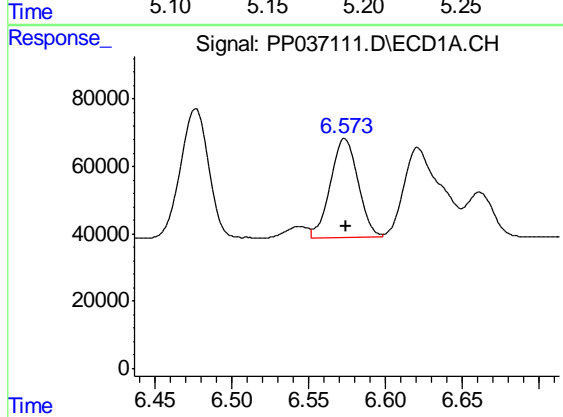
R.T.: 6.279 min  
Delta R.T.: 0.000 min  
Response: 647141  
Conc: 616.57 ng/ml

Instrument :  
ECD\_P  
ClientSampleId :  
AR1242CCC500



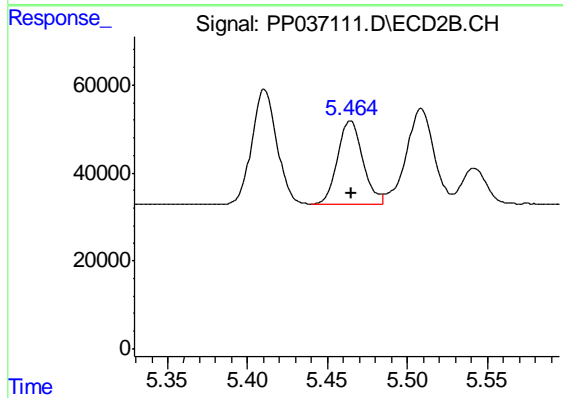
#21 AR-1248-1

R.T.: 5.201 min  
Delta R.T.: -0.001 min  
Response: 378974  
Conc: 600.53 ng/ml



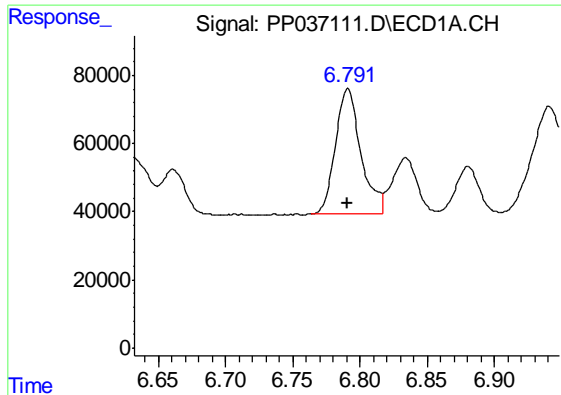
#22 AR-1248-2

R.T.: 6.573 min  
Delta R.T.: 0.000 min  
Response: 368657  
Conc: 248.33 ng/ml



#22 AR-1248-2

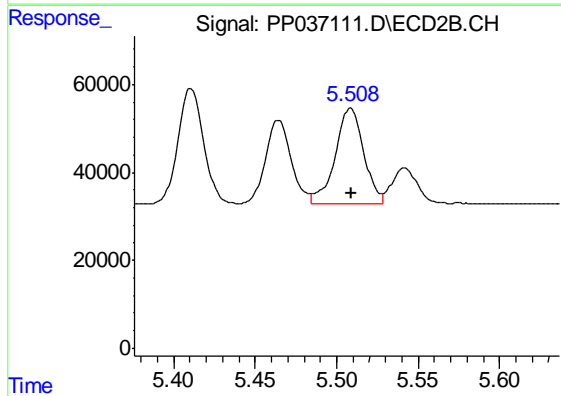
R.T.: 5.464 min  
Delta R.T.: 0.000 min  
Response: 208436  
Conc: 254.11 ng/ml



#23 AR-1248-3

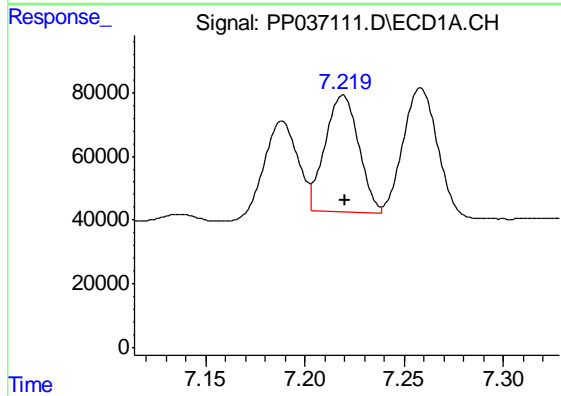
R.T.: 6.791 min  
 Delta R.T.: 0.000 min  
 Response: 484908  
 Conc: 293.56 ng/ml

Instrument :  
 ECD\_P  
 ClientSampleId :  
 AR1242CCC500



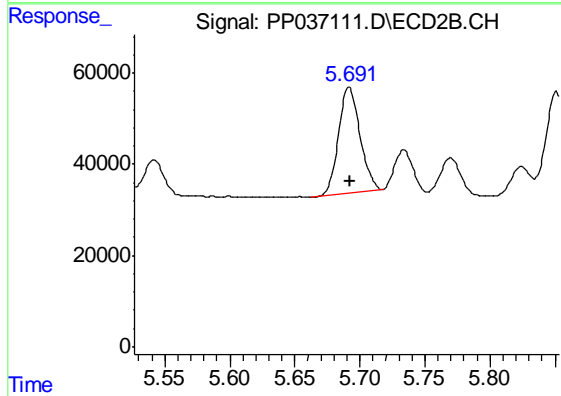
#23 AR-1248-3

R.T.: 5.508 min  
 Delta R.T.: 0.000 min  
 Response: 266376  
 Conc: 311.27 ng/ml



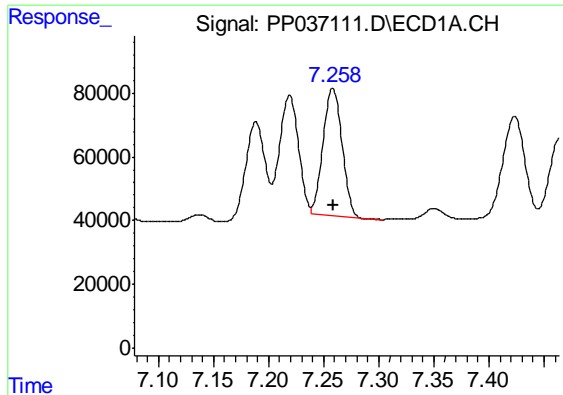
#24 AR-1248-4

R.T.: 7.219 min  
 Delta R.T.: 0.000 min  
 Response: 432250  
 Conc: 228.69 ng/ml



#24 AR-1248-4

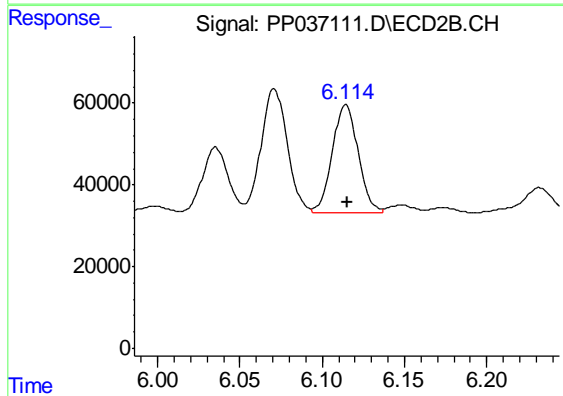
R.T.: 5.692 min  
 Delta R.T.: 0.000 min  
 Response: 264601  
 Conc: 260.01 ng/ml



#25 AR-1248-5

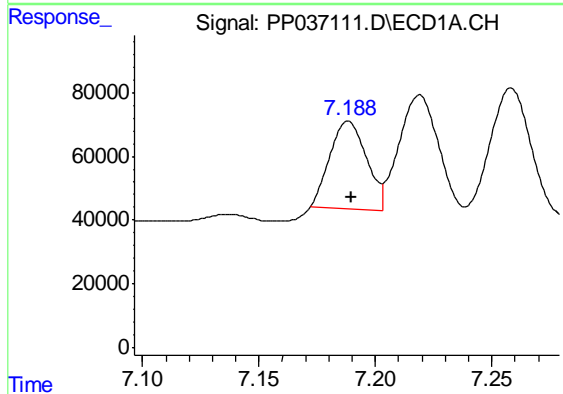
R.T.: 7.258 min  
 Delta R.T.: 0.000 min  
 Response: 476622  
 Conc: 254.66 ng/ml

Instrument :  
 ECD\_P  
 ClientSampleId :  
 AR1242CCC500



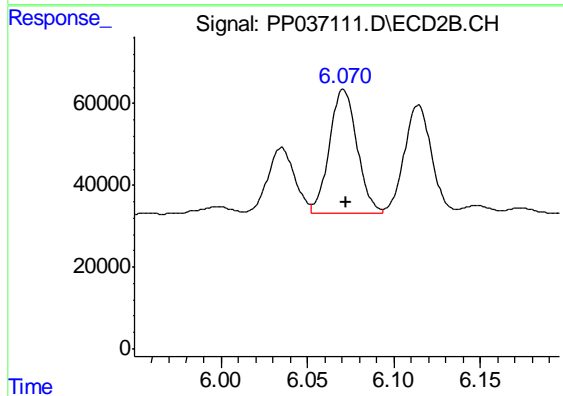
#25 AR-1248-5

R.T.: 6.114 min  
 Delta R.T.: 0.000 min  
 Response: 294030  
 Conc: 277.19 ng/ml



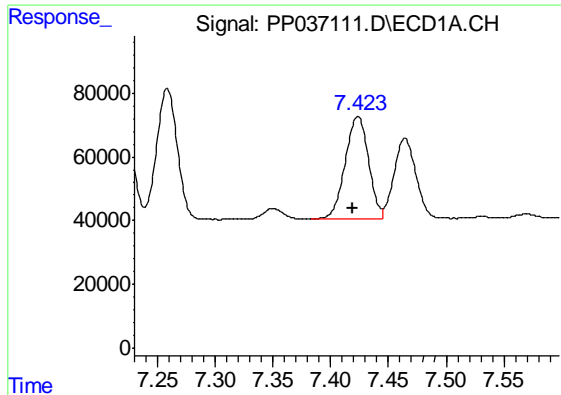
#26 AR-1254-1

R.T.: 7.188 min  
 Delta R.T.: -0.001 min  
 Response: 302565  
 Conc: 168.42 ng/ml



#26 AR-1254-1

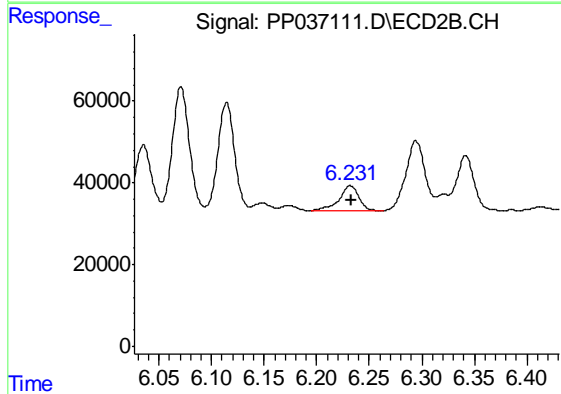
R.T.: 6.071 min  
 Delta R.T.: -0.002 min  
 Response: 340775  
 Conc: 229.54 ng/ml



#27 AR-1254-2

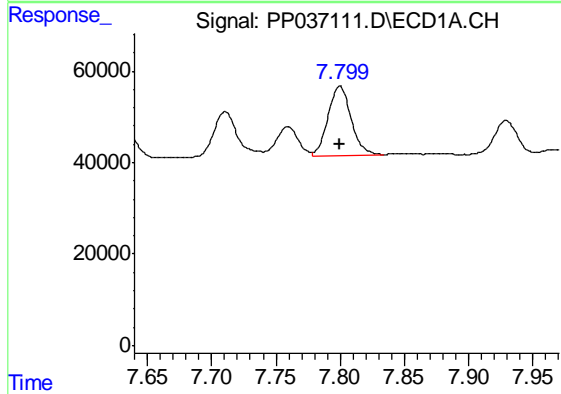
R.T.: 7.424 min  
 Delta R.T.: 0.005 min  
 Response: 452776  
 Conc: 162.77 ng/ml

Instrument :  
 ECD\_P  
 ClientSampleId :  
 AR1242CCC500



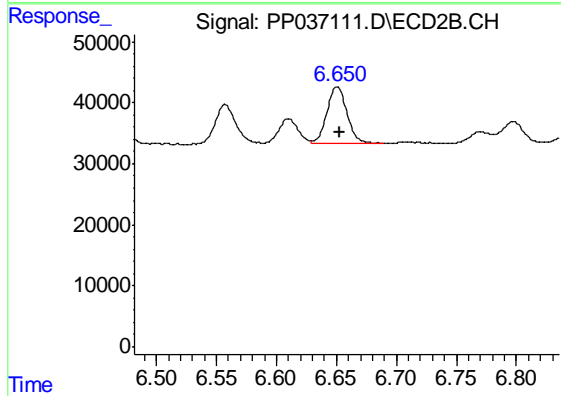
#27 AR-1254-2

R.T.: 6.232 min  
 Delta R.T.: -0.002 min  
 Response: 83030  
 Conc: 63.92 ng/ml



#28 AR-1254-3

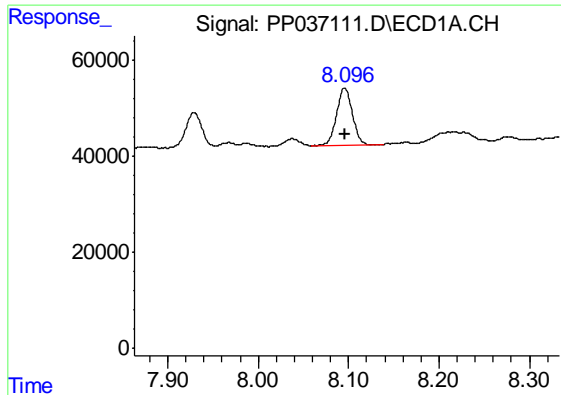
R.T.: 7.800 min  
 Delta R.T.: 0.000 min  
 Response: 188896  
 Conc: 61.27 ng/ml



#28 AR-1254-3

R.T.: 6.651 min  
 Delta R.T.: -0.002 min  
 Response: 109507  
 Conc: 51.31 ng/ml

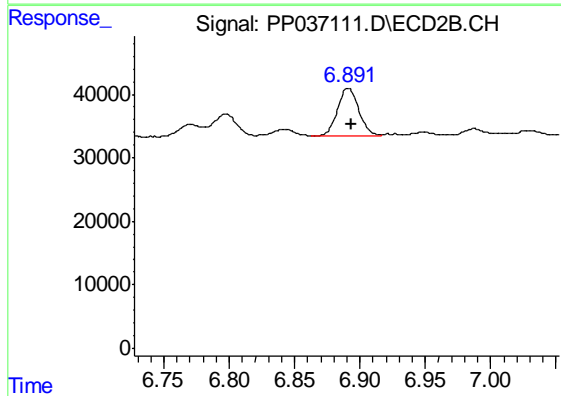




#29 AR-1254-4

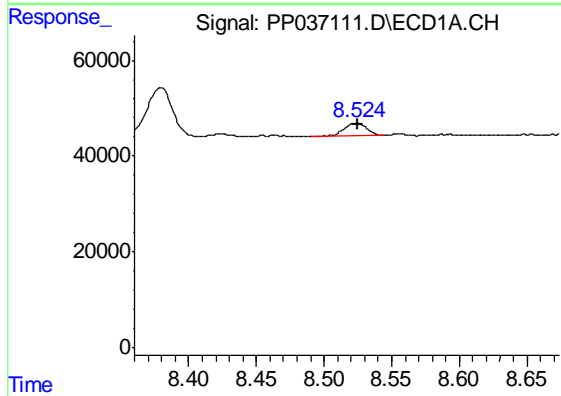
R.T.: 8.096 min  
 Delta R.T.: 0.000 min  
 Response: 145992  
 Conc: 64.27 ng/ml

Instrument :  
 ECD\_P  
 ClientSampleId :  
 AR1242CCC500



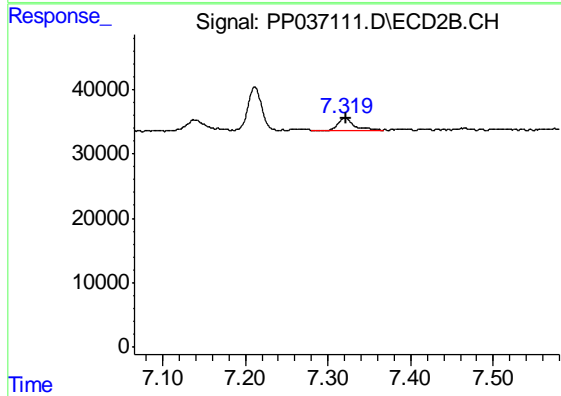
#29 AR-1254-4

R.T.: 6.891 min  
 Delta R.T.: -0.002 min  
 Response: 84660  
 Conc: 62.40 ng/ml



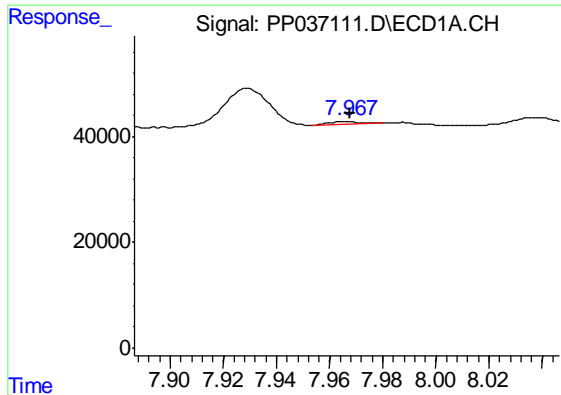
#30 AR-1254-5

R.T.: 8.524 min  
 Delta R.T.: -0.001 min  
 Response: 31327  
 Conc: 12.52 ng/ml



#30 AR-1254-5

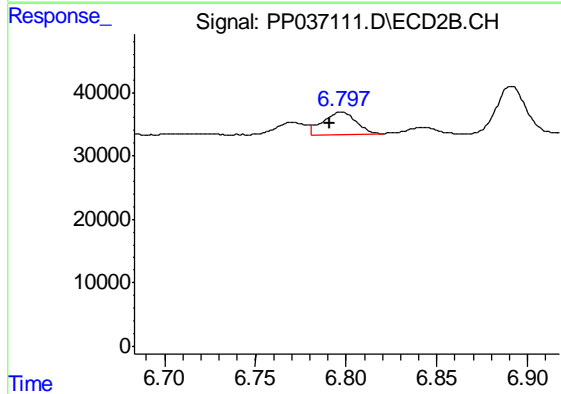
R.T.: 7.321 min  
 Delta R.T.: -0.001 min  
 Response: 27293  
 Conc: 14.56 ng/ml



#31 AR-1260-1

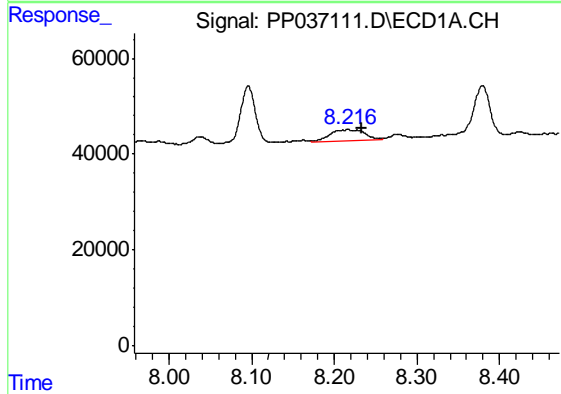
R.T.: 7.967 min  
 Delta R.T.: 0.000 min  
 Response: 4155  
 Conc: 1.89 ng/ml

Instrument :  
 ECD\_P  
 ClientSampleId :  
 AR1242CCC500



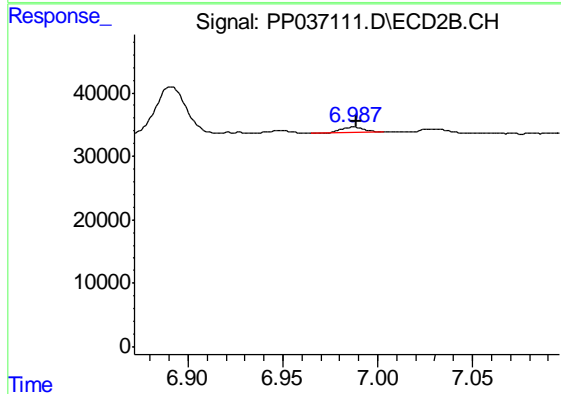
#31 AR-1260-1

R.T.: 6.798 min  
 Delta R.T.: 0.007 min  
 Response: 45792  
 Conc: 33.14 ng/ml



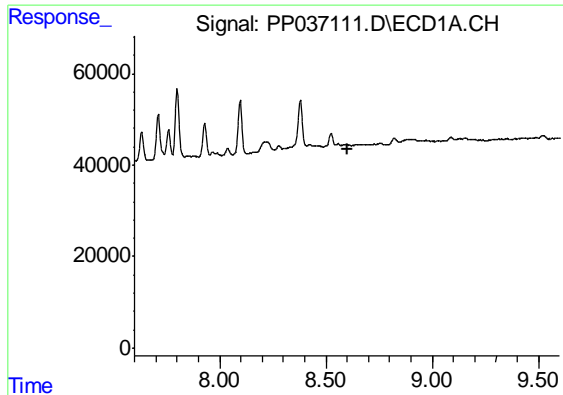
#32 AR-1260-2

R.T.: 8.217 min  
 Delta R.T.: -0.017 min  
 Response: 66627  
 Conc: 23.95 ng/ml



#32 AR-1260-2

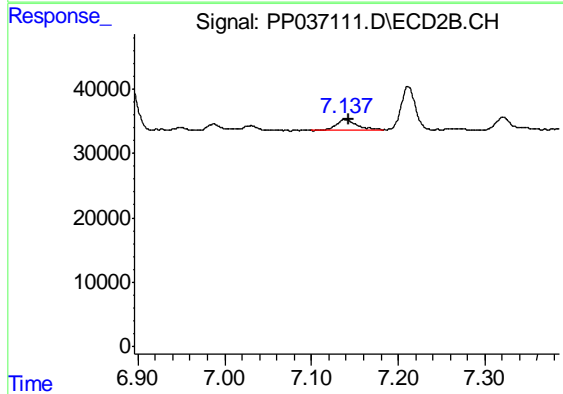
R.T.: 6.987 min  
 Delta R.T.: -0.002 min  
 Response: 8509  
 Conc: 5.06 ng/ml



#33 AR-1260-3

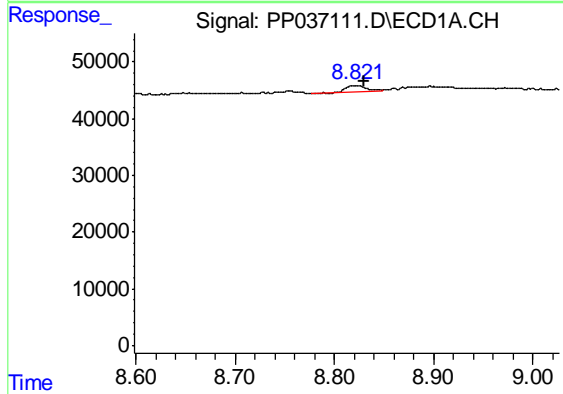
R.T.: 0.000 min  
 Exp R.T. : 8.599 min  
 Response: 0  
 Conc: N.D.

Instrument :  
 ECD\_P  
 ClientSampleId :  
 AR1242CCC500



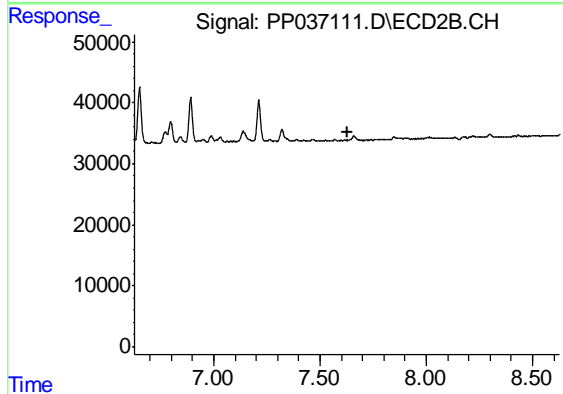
#33 AR-1260-3

R.T.: 7.138 min  
 Delta R.T.: -0.004 min  
 Response: 28122  
 Conc: 16.41 ng/ml



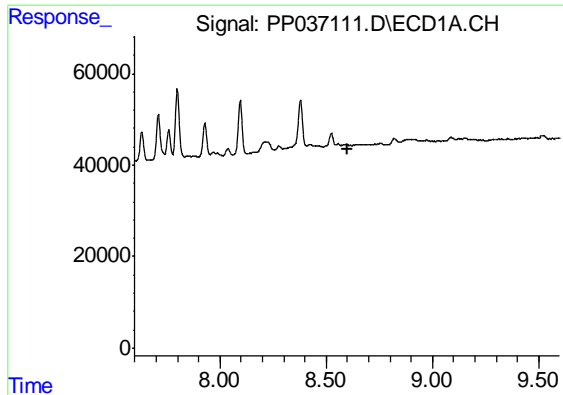
#34 AR-1260-4

R.T.: 8.822 min  
 Delta R.T.: -0.008 min  
 Response: 18118  
 Conc: 7.37 ng/ml



#34 AR-1260-4

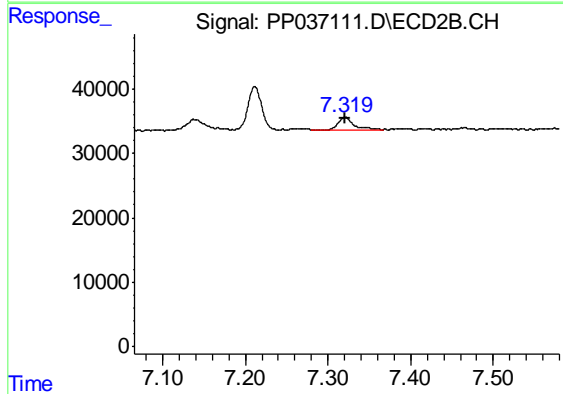
R.T.: 0.000 min  
 Exp R.T. : 7.627 min  
 Response: 0  
 Conc: N.D.



#36 AR-1262-1

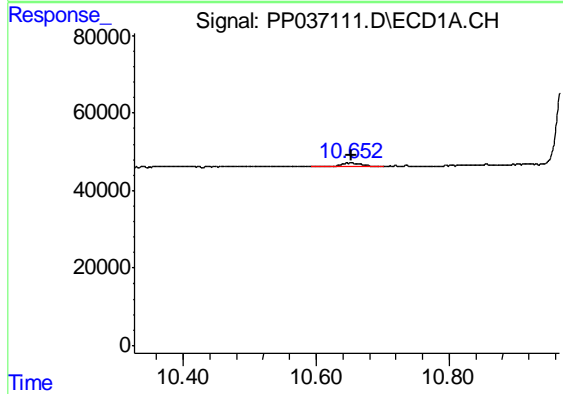
R.T.: 0.000 min  
 Exp R.T. : 8.598 min  
 Response: 0  
 Conc: N.D.

Instrument :  
 ECD\_P  
 ClientSampleId :  
 AR1242CCC500



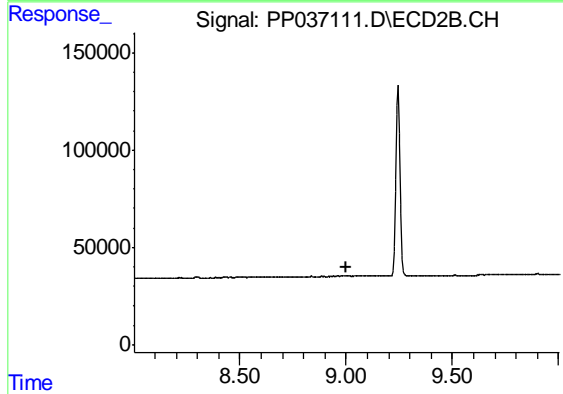
#36 AR-1262-1

R.T.: 7.321 min  
 Delta R.T.: 0.000 min  
 Response: 27293  
 Conc: 26.28 ng/ml



#45 AR-1268-5

R.T.: 10.653 min  
 Delta R.T.: 0.000 min  
 Response: 20150  
 Conc: 1.27 ng/ml



#45 AR-1268-5

R.T.: 0.000 min  
 Exp R.T. : 9.004 min  
 Response: 0  
 Conc: N.D.