

Data Path : Z:\pestpcbsrv\HPCHEM1\ECD_P\Data\PP070821\
 Data File : PP037096.D
 Signal(s) : Signal #1: ECD1A.CH Signal #2: ECD2B.CH
 Acq On : 08 Jul 2021 10:05
 Operator : DD\AJ
 Sample : AR1242CCC500
 Misc :
 ALS Vial : 4 Sample Multiplier: 1

Instrument :
 ECD_P
 ClientSampleId :
 AR1242CCC500

Integration File signal 1: autoint1.e
 Integration File signal 2: autoint2.e
 Quant Time: Jul 08 16:16:00 2021
 Quant Method : Z:\pestpcbsrv\HPCHEM1\ECD_P\methods\PP070621.M
 Quant Title : GC EXTRACTABLES
 QLast Update : Wed Jul 07 08:32:32 2021
 Response via : Initial Calibration
 Integrator: ChemStation 6890 Scale Mode: Small noise peaks clipped

Volume Inj. : 2 µl
 Signal #1 Phase : ZB-MR1 Signal #2 Phase: ZB-MR2
 Signal #1 Info : 30Mx0.32mmx 0.50µ Signal #2 Info : 30M x 0.32mm x 0.25µm

| Compound | RT#1 | RT#2 | Resp#1 | Resp#2 | ng/ml | ng/ml |
|-----------------------------|--------|-------|---------|---------|---------|---------|
| ----- | | | | | | |
| System Monitoring Compounds | | | | | | |
| 1) SA Tetrachlo... | 4.962 | 3.951 | 2520889 | 1532295 | 55.466 | 55.996 |
| 2) SA Decachlor... | 10.996 | 9.247 | 2354886 | 1411726 | 51.154 | 50.718 |
| Target Compounds | | | | | | |
| 16) L4 AR-1242-1 | 6.282 | 5.203 | 687865 | 414713 | 539.634 | 550.237 |
| 17) L4 AR-1242-2 | 6.306 | 5.222 | 988261 | 566610 | 545.061 | 550.657 |
| 18) L4 AR-1242-3 | 6.372 | 5.413 | 630525 | 313164 | 548.204 | 549.973 |
| 19) L4 AR-1242-4 | 6.479 | 5.511 | 526050 | 286887 | 549.513 | 556.654 |
| 20) L4 AR-1242-5 | 7.261 | 6.073 | 607446 | 406382 | 584.105 | 597.026 |
| ----- | | | | | | |

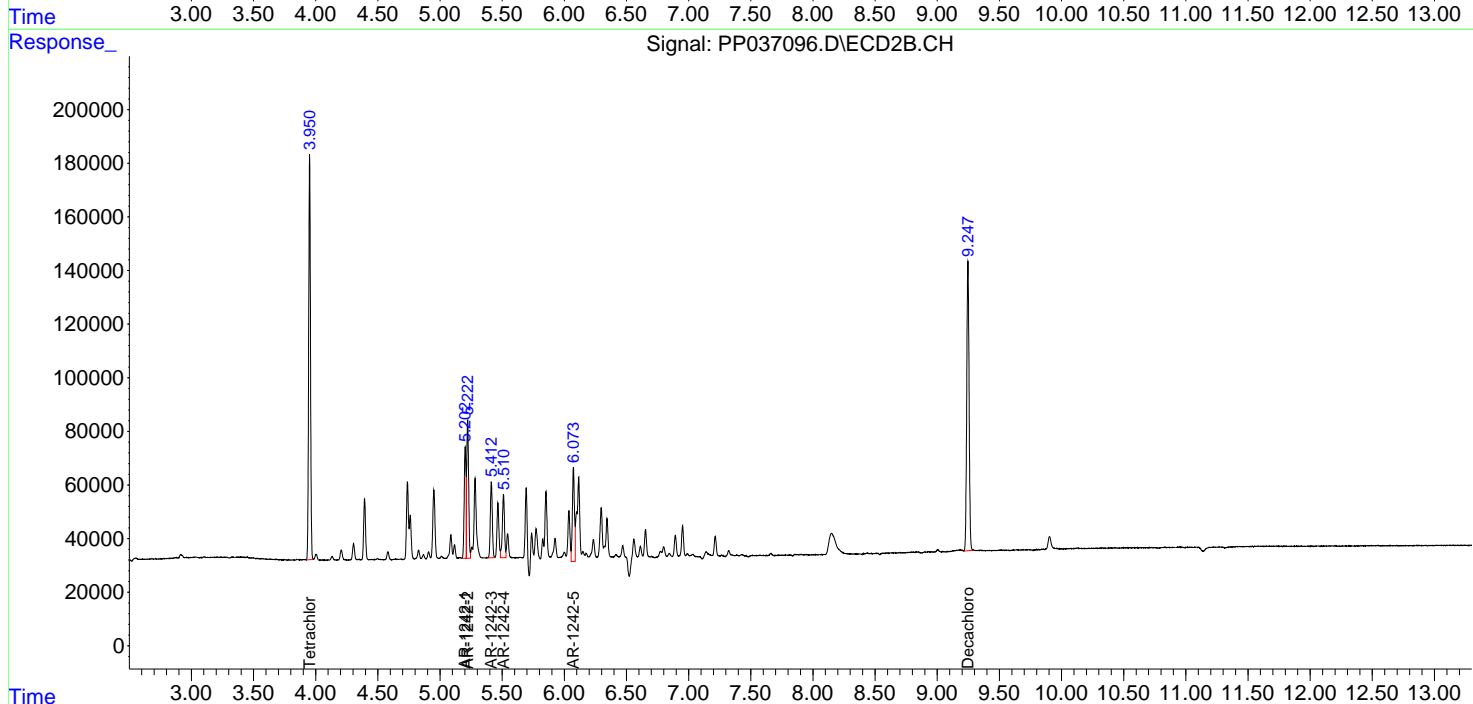
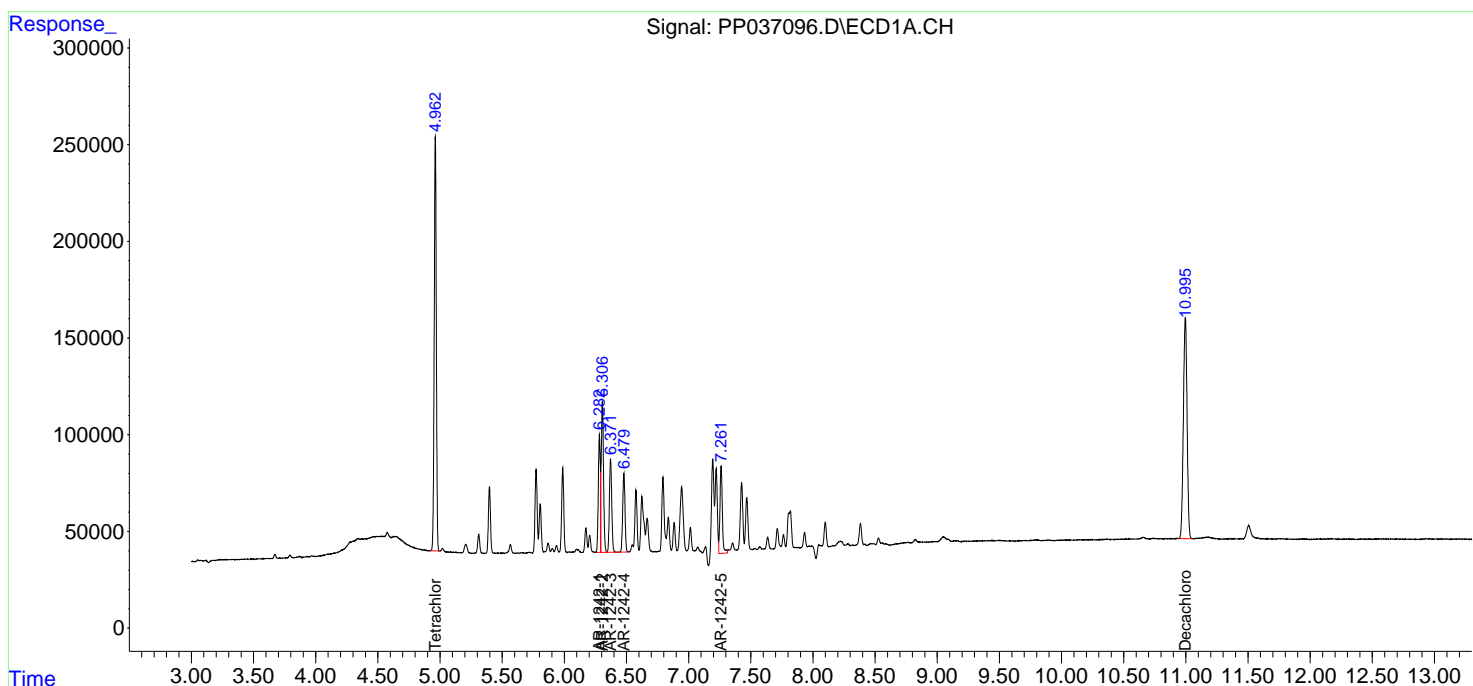
(f)=RT Delta > 1/2 Window (#)=Amounts differ by > 25% (m)=manual int.

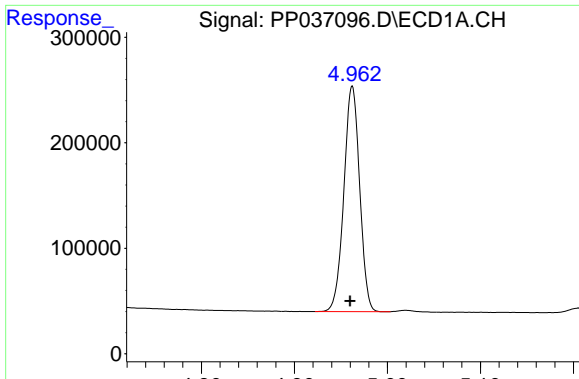
Data Path : Z:\pestpcbsrv\HPCHEM1\ECD_P\Data\PP070821\
 Data File : PP037096.D
 Signal(s) : Signal #1: ECD1A.CH Signal #2: ECD2B.CH
 Acq On : 08 Jul 2021 10:05
 Operator : DD\AJ
 Sample : AR1242CCC500
 Misc :
 ALS Vial : 4 Sample Multiplier: 1

Instrument :
 ECD_P
 ClientSampled :
 AR1242CCC500

Integration File signal 1: autoint1.e
 Integration File signal 2: autoint2.e
 Quant Time: Jul 08 16:16:00 2021
 Quant Method : Z:\pestpcbsrv\HPCHEM1\ECD_P\methods\PP070621.M
 Quant Title : GC EXTRACTABLES
 QLast Update : Wed Jul 07 08:32:32 2021
 Response via : Initial Calibration
 Integrator: ChemStation 6890 Scale Mode: Small noise peaks clipped

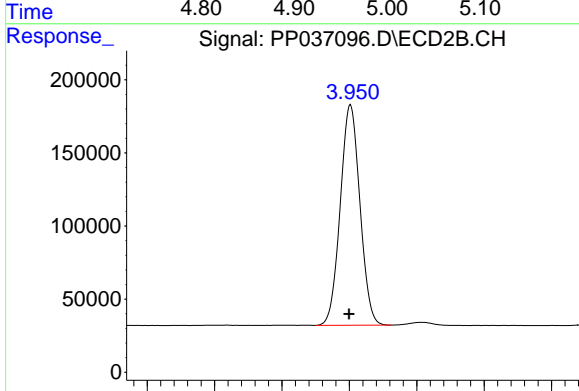
Volume Inj. : 2 µl
 Signal #1 Phase : ZB-MR1 Signal #2 Phase: ZB-MR2
 Signal #1 Info : 30Mx0.32mmx 0.50µ Signal #2 Info : 30M x 0.32mm x 0.25µm



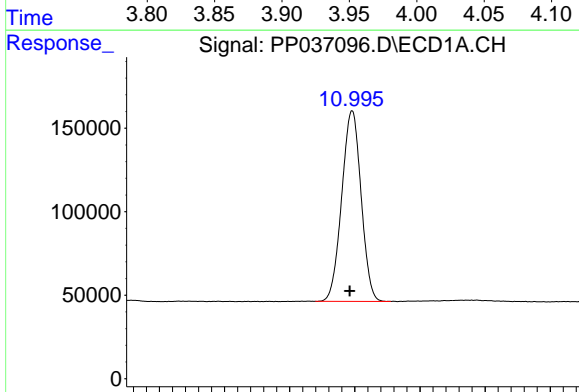


#1 Tetrachloro-m-xylene
 R.T.: 4.962 min
 Delta R.T.: 0.002 min
 Response: 2520889
 Conc: 55.47 ng/ml

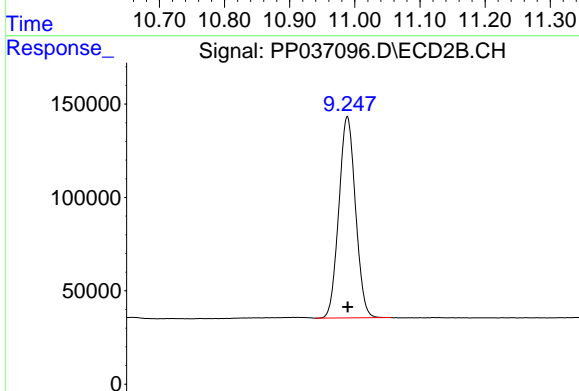
Instrument :
 ECD_P
 ClientSampleId :
 AR1242CCC500



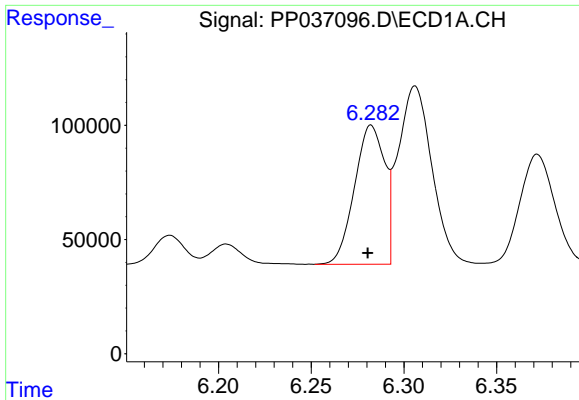
#1 Tetrachloro-m-xylene
 R.T.: 3.951 min
 Delta R.T.: 0.001 min
 Response: 1532295
 Conc: 56.00 ng/ml



#2 Decachlorobiphenyl
 R.T.: 10.996 min
 Delta R.T.: 0.004 min
 Response: 2354886
 Conc: 51.15 ng/ml



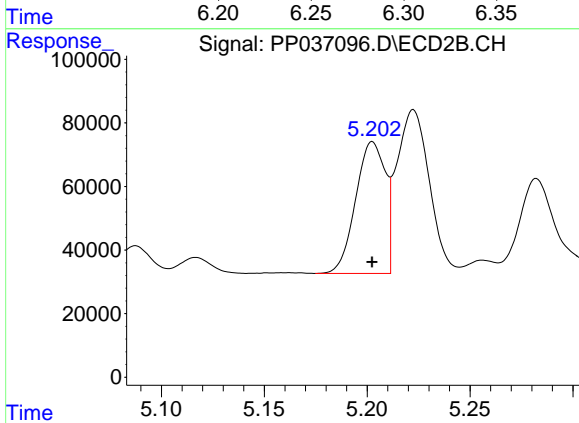
#2 Decachlorobiphenyl
 R.T.: 9.247 min
 Delta R.T.: 0.000 min
 Response: 1411726
 Conc: 50.72 ng/ml



#16 AR-1242-1

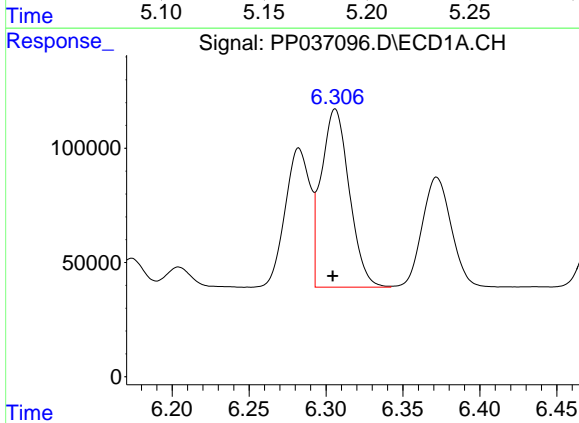
R.T.: 6.282 min
 Delta R.T.: 0.002 min
 Response: 687865
 Conc: 539.63 ng/ml

Instrument :
 ECD_P
ClientSampleId :
 AR1242CCC500



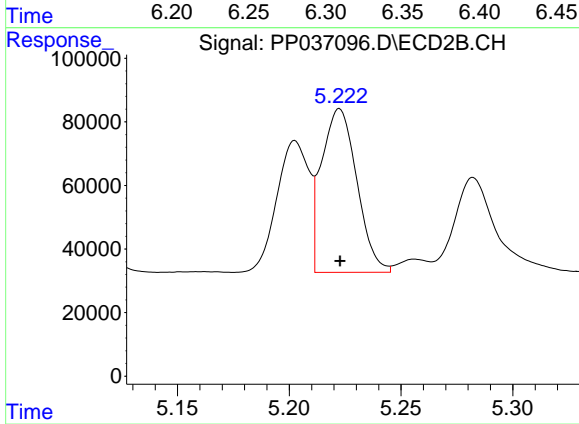
#16 AR-1242-1

R.T.: 5.203 min
 Delta R.T.: 0.000 min
 Response: 414713
 Conc: 550.24 ng/ml



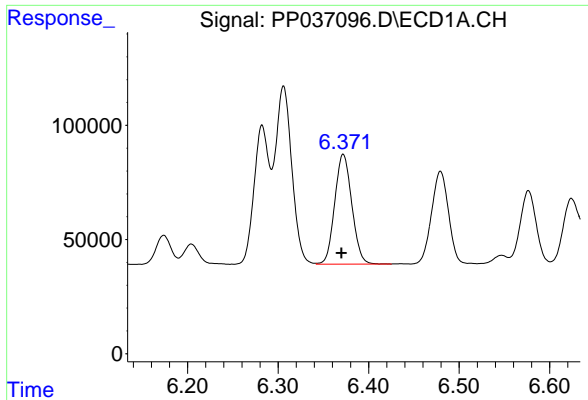
#17 AR-1242-2

R.T.: 6.306 min
 Delta R.T.: 0.002 min
 Response: 988261
 Conc: 545.06 ng/ml



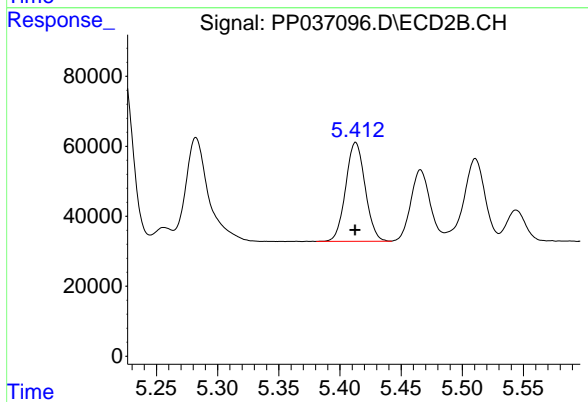
#17 AR-1242-2

R.T.: 5.222 min
 Delta R.T.: 0.000 min
 Response: 566610
 Conc: 550.66 ng/ml

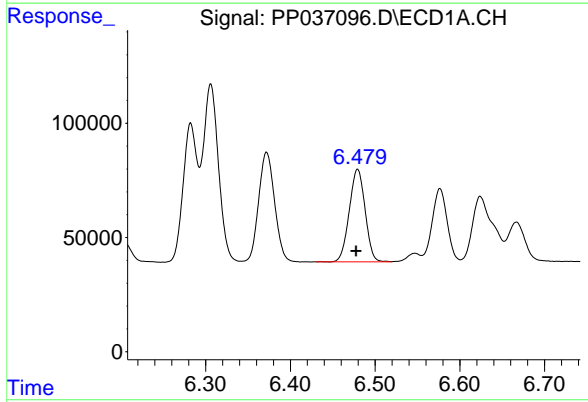


#18 AR-1242-3
 R.T.: 6.372 min
 Delta R.T.: 0.002 min
 Response: 630525
 Conc: 548.20 ng/ml

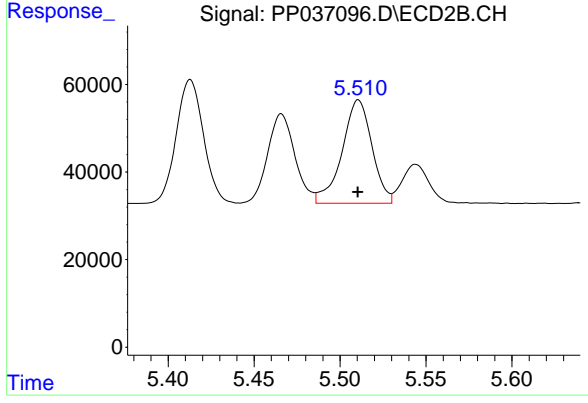
Instrument :
 ECD_P
 ClientSampleId :
 AR1242CCC500



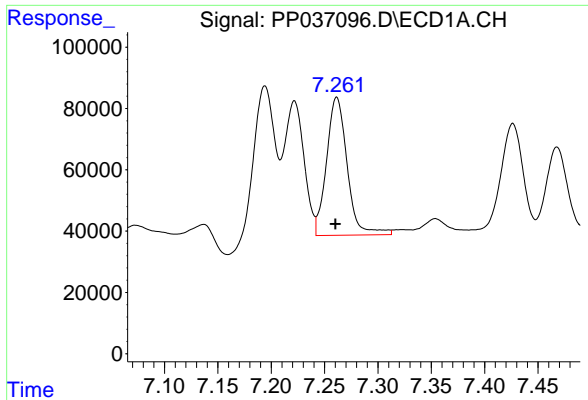
#18 AR-1242-3
 R.T.: 5.413 min
 Delta R.T.: 0.000 min
 Response: 313164
 Conc: 549.97 ng/ml



#19 AR-1242-4
 R.T.: 6.479 min
 Delta R.T.: 0.002 min
 Response: 526050
 Conc: 549.51 ng/ml



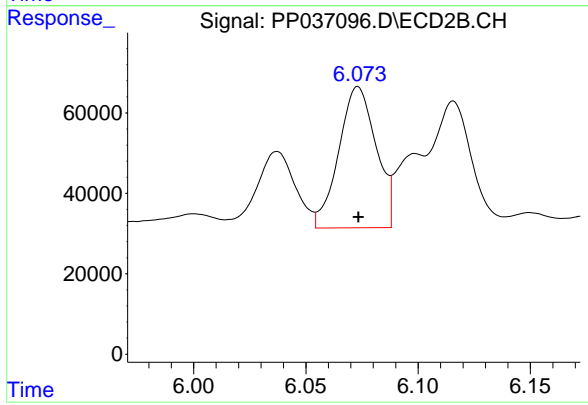
#19 AR-1242-4
 R.T.: 5.511 min
 Delta R.T.: 0.000 min
 Response: 286887
 Conc: 556.65 ng/ml



#20 AR-1242-5

R.T.: 7.261 min
Delta R.T.: 0.001 min
Response: 607446
Conc: 584.10 ng/ml

Instrument :
ECD_P
ClientSampleId :
AR1242CCC500



#20 AR-1242-5

R.T.: 6.073 min
Delta R.T.: 0.000 min
Response: 406382
Conc: 597.03 ng/ml