

Data Path : Z:\pestpcbsrv\HPCHEM1\ECD\_P\Data\PP070821\  
 Data File : PP037131.D  
 Signal(s) : Signal #1: ECD1A.CH Signal #2: ECD2B.CH  
 Acq On : 08 Jul 2021 20:59  
 Operator : DD\AJ  
 Sample : M2967-05  
 Misc :  
 ALS Vial : 28 Sample Multiplier: 1

**Instrument :**  
 ECD\_P  
**ClientSampleId :**  
 1-8FT-STEFANIC-AVE-TP-2

Integration File signal 1: autoint1.e  
 Integration File signal 2: autoint2.e  
 Quant Time: Jul 09 04:10:49 2021  
 Quant Method : Z:\pestpcbsrv\HPCHEM1\ECD\_P\methods\PP070621.M  
 Quant Title : GC EXTRACTABLES  
 QLast Update : Wed Jul 07 08:32:32 2021  
 Response via : Initial Calibration  
 Integrator: ChemStation 6890 Scale Mode: Small noise peaks clipped

Volume Inj. : 2 µl  
 Signal #1 Phase : ZB-MR1 Signal #2 Phase: ZB-MR2  
 Signal #1 Info : 30Mx0.32mmx 0.50µ Signal #2 Info : 30M x 0.32mm x 0.25µm

Compound	RT#1	RT#2	Resp#1	Resp#2	ng/ml	ng/ml
-----						
System Monitoring Compounds						
1) SA Tetrachlo...	4.958	3.949	1105841	653039	24.331	23.865
2) SA Decachlor...	10.988	9.242	1142604	631704	24.820	22.695

Target Compounds

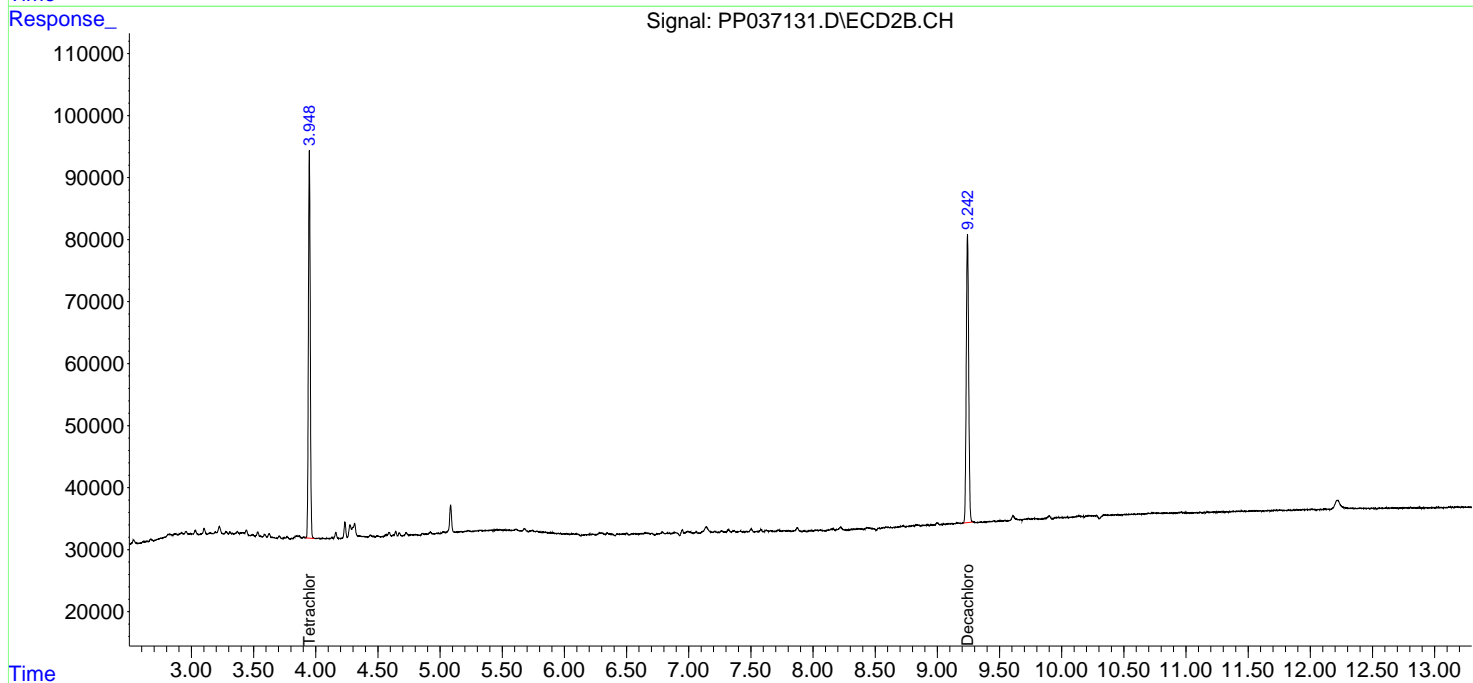
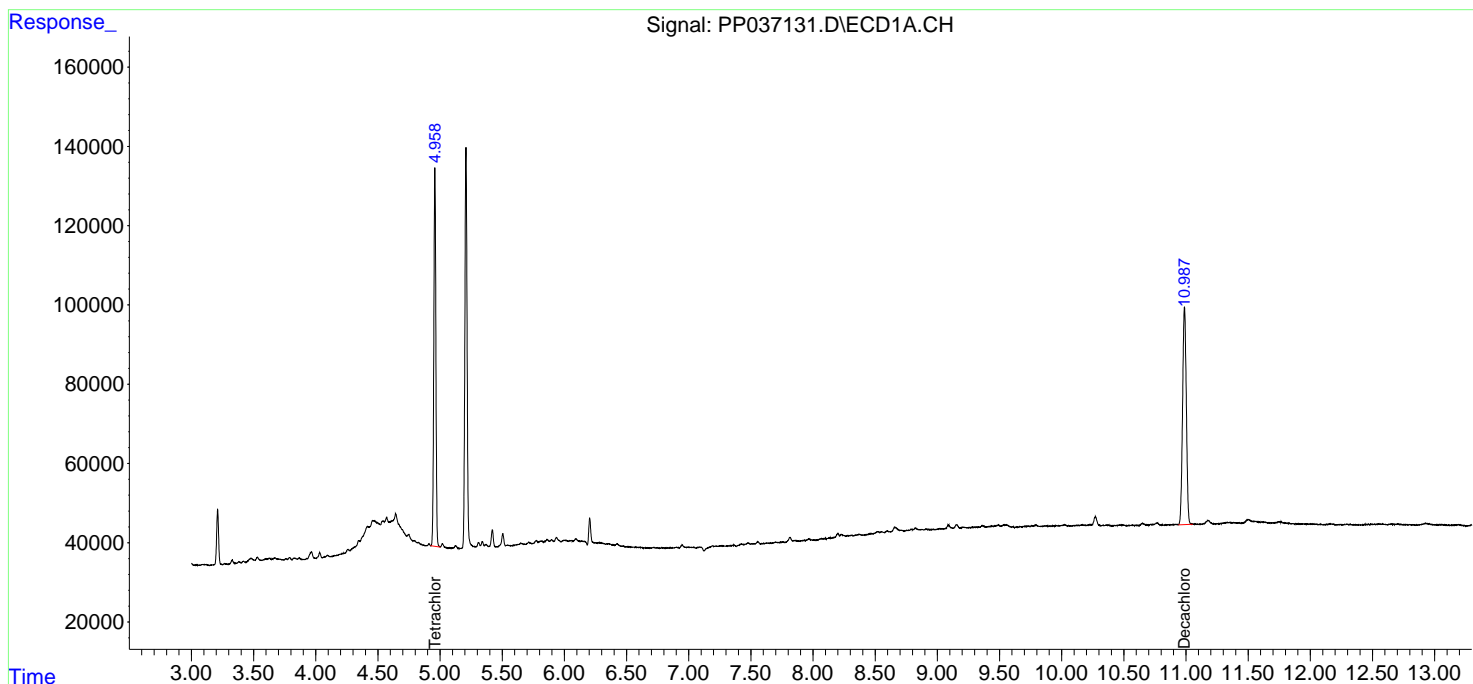
-----  
 (f)=RT Delta > 1/2 Window (#)=Amounts differ by > 25% (m)=manual int.

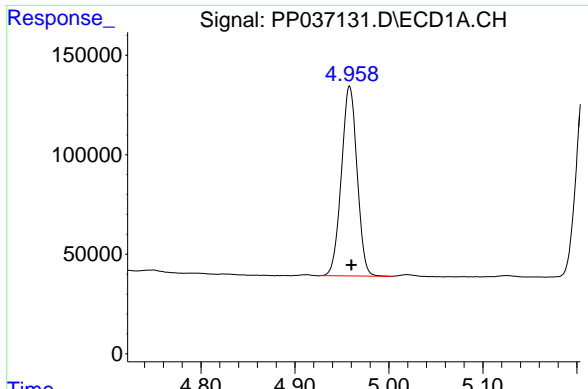
Data Path : Z:\pestpcbsrv\HPCHEM1\ECD\_P\Data\PP070821\  
 Data File : PP037131.D  
 Signal(s) : Signal #1: ECD1A.CH Signal #2: ECD2B.CH  
 Acq On : 08 Jul 2021 20:59  
 Operator : DD\AJ  
 Sample : M2967-05  
 Misc :  
 ALS Vial : 28 Sample Multiplier: 1

Instrument :  
 ECD\_P  
 ClientSampleId :  
 1-8FT-STEFANIC-AVE-TP-2

Integration File signal 1: autoint1.e  
 Integration File signal 2: autoint2.e  
 Quant Time: Jul 09 04:10:49 2021  
 Quant Method : Z:\pestpcbsrv\HPCHEM1\ECD\_P\methods\PP070621.M  
 Quant Title : GC EXTRACTABLES  
 QLast Update : Wed Jul 07 08:32:32 2021  
 Response via : Initial Calibration  
 Integrator: ChemStation 6890 Scale Mode: Small noise peaks clipped

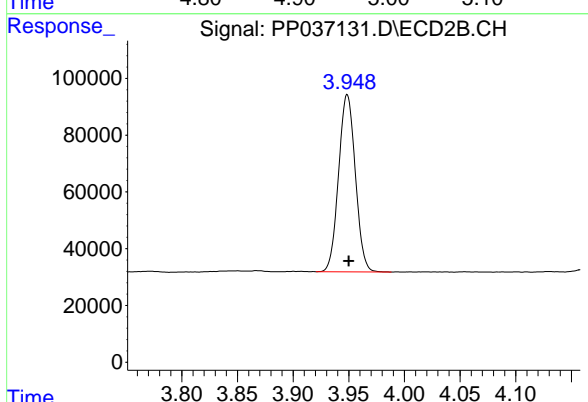
Volume Inj. : 2 µl  
 Signal #1 Phase : ZB-MR1 Signal #2 Phase: ZB-MR2  
 Signal #1 Info : 30Mx0.32mmx 0.50µ Signal #2 Info : 30M x 0.32mm x 0.25µm



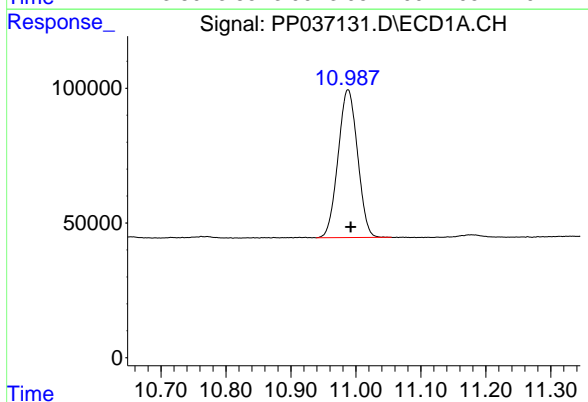


#1 Tetrachloro-m-xylene  
 R.T.: 4.958 min  
 Delta R.T.: -0.002 min  
 Response: 1105841  
 Conc: 24.33 ng/ml

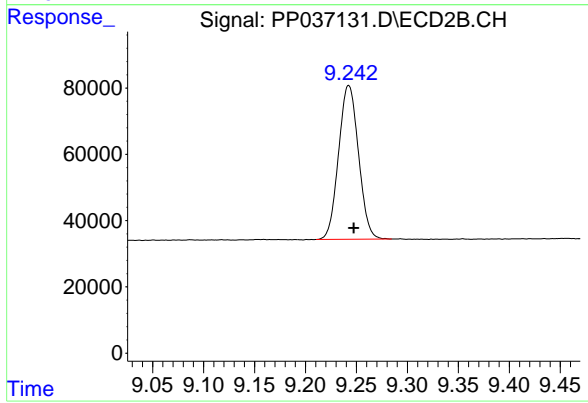
Instrument :  
 ECD\_P  
 ClientSampleId :  
 1-8FT-STEFANIC-AVE-TP-2



#1 Tetrachloro-m-xylene  
 R.T.: 3.949 min  
 Delta R.T.: -0.001 min  
 Response: 653039  
 Conc: 23.86 ng/ml



#2 Decachlorobiphenyl  
 R.T.: 10.988 min  
 Delta R.T.: -0.004 min  
 Response: 1142604  
 Conc: 24.82 ng/ml



#2 Decachlorobiphenyl  
 R.T.: 9.242 min  
 Delta R.T.: -0.005 min  
 Response: 631704  
 Conc: 22.69 ng/ml