

Data Path : Z:\pestpcbsrv\HPCHEM1\ECD\_P\Data\PP070825\  
 Data File : PP073552.D  
 Signal(s) : Signal #1: ECD1A.ch Signal #2: ECD2B.ch  
 Acq On : 07 Jul 2025 20:13  
 Operator : YP\AJ  
 Sample : HEXANE  
 Misc :  
 ALS Vial : 1 Sample Multiplier: 1

Instrument :  
 ECD\_P  
 ClientSampleId :  
 HEXANE

Integration File signal 1: autoint1.e  
 Integration File signal 2: autoint2.e  
 Quant Time: Jul 08 07:29:28 2025  
 Quant Method : Z:\pestpcbsrv\HPCHEM1\ECD\_P\methods\PP070825.M  
 Quant Title : GC EXTRACTABLES  
 QLast Update : Tue Jul 08 07:28:32 2025  
 Response via : Initial Calibration  
 Integrator: ChemStation

Volume Inj. : 2 µl  
 Signal #1 Phase : ZB-MR1 Signal #2 Phase: ZB-MR2  
 Signal #1 Info : 30Mx0.32mmx 0.50µ Signal #2 Info : 30M x 0.32mm x 0.25µm

Compound	RT#1	RT#2	Resp#1	Resp#2	ng/ml	ng/ml
System Monitoring Compounds						
1) SA Tetrachlo...	4.490	3.779	-6133	147442	N.D.	0.080
2) SA Decachlor...	10.178	0.000	57490	0	0.053	N.D. #
Target Compounds						
3) L1 AR-1016-1	5.657	4.864	290249	496692	6.109	7.286
4) L1 AR-1016-2	5.657	4.878	290249	354023	4.076	3.475
5) L1 AR-1016-3	5.733	5.051	82372	696398	1.887	12.871 #
6) L1 AR-1016-4	5.830	5.098	202070	620668	5.622	14.144 #
7) L1 AR-1016-5	6.156f	5.308	57183	1059182	1.825	19.405 #
8) L2 AR-1221-1	4.676	3.990	77353	87269	4.329	3.227 #
9) L2 AR-1221-2	4.786	4.075	188677	76801	13.971	3.772 #
10) L2 AR-1221-3	4.857	4.146	130994	61387	3.149	0.999 #
11) L3 AR-1232-1	4.857	4.146	130994	61387	4.012	1.317 #
12) L3 AR-1232-2	5.367	4.878	76414	354023	4.701	7.428 #
13) L3 AR-1232-3	5.657	5.051	290249	696398	8.797	27.824 #
14) L3 AR-1232-4	5.830	5.134	202070	218488	12.287	10.089
15) L3 AR-1232-5	5.912	5.308	134601	1059182	12.734	46.942 #
16) L4 AR-1242-1	5.657	4.864	290249	496692	7.600	8.599
17) L4 AR-1242-2	5.657	4.878	290249	354023	4.847	4.095
18) L4 AR-1242-3	5.733	5.051	82372	696398	2.249	15.157 #
19) L4 AR-1242-4	5.830	5.134	202070	218488	6.288	4.936
20) L4 AR-1242-5	6.543	5.647	2650035	407392	80.950	7.375 #
21) L5 AR-1248-1	5.657	4.864	290249	496692	9.402	11.063
22) L5 AR-1248-2	5.912	5.098	134601	620668	3.371	10.086 #
23) L5 AR-1248-3	6.156f	5.134	57183	218488	1.288	3.410 #
24) L5 AR-1248-4	6.514	5.308	988372	1059182	17.944	14.052
25) L5 AR-1248-5	6.543	5.712	2650035	202092	49.266	2.709 #
26) L6 AR-1254-1	6.496	5.647	2303139	407392	42.977	3.511 #
27) L6 AR-1254-2	6.708	5.765f	2663298	43023	31.977	0.428 #
28) L6 AR-1254-3	7.064	6.199	8414820	429707	95.264	2.782 #
29) L6 AR-1254-4	7.331	6.448	1511035	348471	19.208	3.685 #
30) L6 AR-1254-5	7.715f	6.872	3281366	551387	44.535	4.132 #
31) L7 AR-1260-1	7.226	6.338	755604	633498	12.815	6.493 #
32) L7 AR-1260-2	7.497	6.534	8686467	56881	90.635	0.463 #
33) L7 AR-1260-3	7.819	6.697	3880430	81062	53.105	0.741 #
34) L7 AR-1260-4	8.056	7.163	946806	2537068	14.499	28.376 #
35) L7 AR-1260-5	8.361	7.403	422969	2680183	2.804	11.926 #
36) L8 AR-1262-1	8.056	6.872	946806	551387	10.879	3.733 #
37) L8 AR-1262-2	8.361	7.163	422969	2537068	2.136	19.847 #
38) L8 AR-1262-3	8.706	7.674	77797	551266	0.619	4.835 #
39) L8 AR-1262-4	8.777	7.750	233471	23339	2.503	0.127 #
40) L8 AR-1262-5	9.433	8.261	56765	58650	0.896	0.695
41) L9 AR-1268-1	8.706	7.674	77797	551266	0.349	1.793 #

Data Path : Z:\pestpcbsrv\HPCHEM1\ECD\_P\Data\PP070825\  
 Data File : PP073552.D  
 Signal(s) : Signal #1: ECD1A.ch Signal #2: ECD2B.ch  
 Acq On : 07 Jul 2025 20:13  
 Operator : YP\AJ  
 Sample : HEXANE  
 Misc :  
 ALS Vial : 1 Sample Multiplier: 1

Instrument :  
 ECD\_P  
 ClientSampleId :  
 HEXANE

Integration File signal 1: autoint1.e  
 Integration File signal 2: autoint2.e  
 Quant Time: Jul 08 07:29:28 2025  
 Quant Method : Z:\pestpcbsrv\HPCHEM1\ECD\_P\methods\PP070825.M  
 Quant Title : GC EXTRACTABLES  
 QLast Update : Tue Jul 08 07:28:32 2025  
 Response via : Initial Calibration  
 Integrator: ChemStation

Volume Inj. : 2 µl  
 Signal #1 Phase : ZB-MR1 Signal #2 Phase: ZB-MR2  
 Signal #1 Info : 30Mx0.32mmx 0.50µ Signal #2 Info : 30M x 0.32mm x 0.25µm

	Compound	RT#1	RT#2	Resp#1	Resp#2	ng/ml	ng/ml
42)	L9 AR-1268-2	8.777	7.750	233471	23339	1.226	0.088 #
43)	L9 AR-1268-3	8.997	7.940	373685	155747	2.257	0.690 #
44)	L9 AR-1268-4	9.433	8.261	56765	58650	0.816	0.631
45)	L9 AR-1268-5	9.837	8.520	176134	92618	0.382	0.150 #

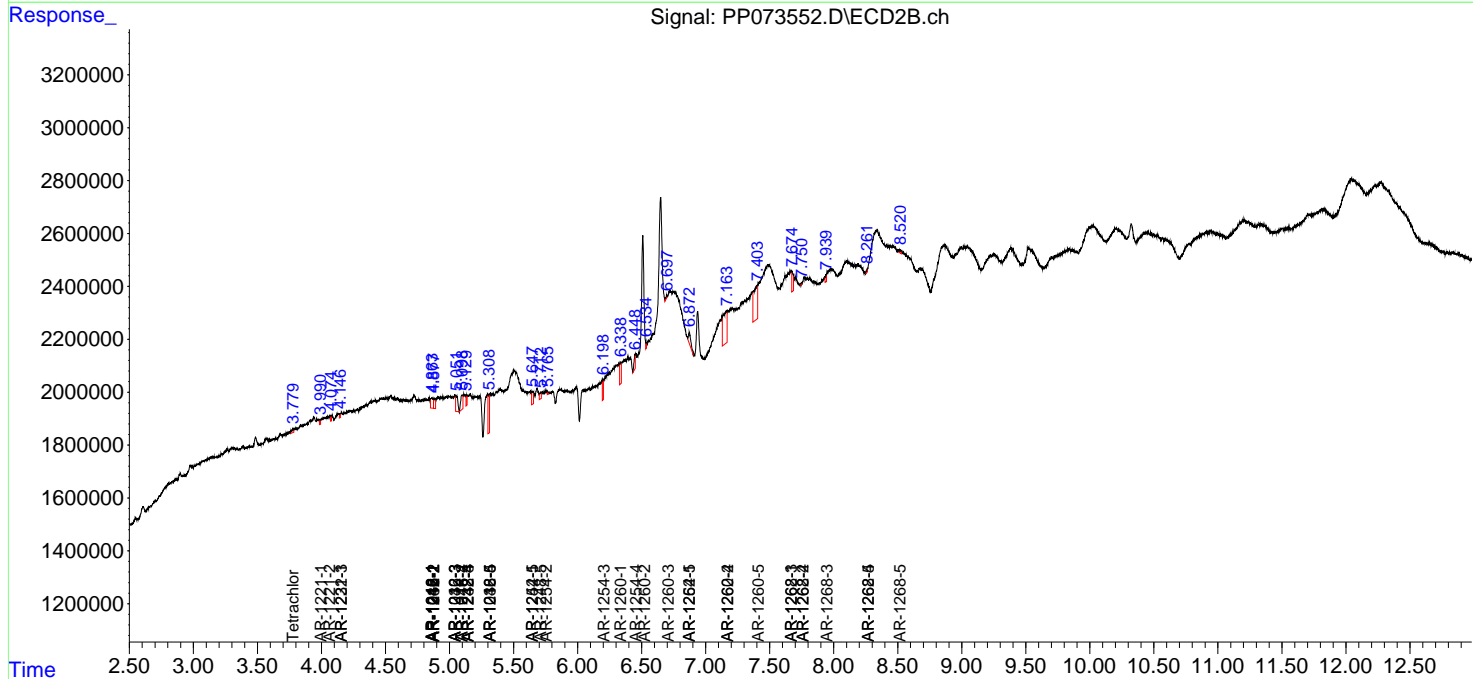
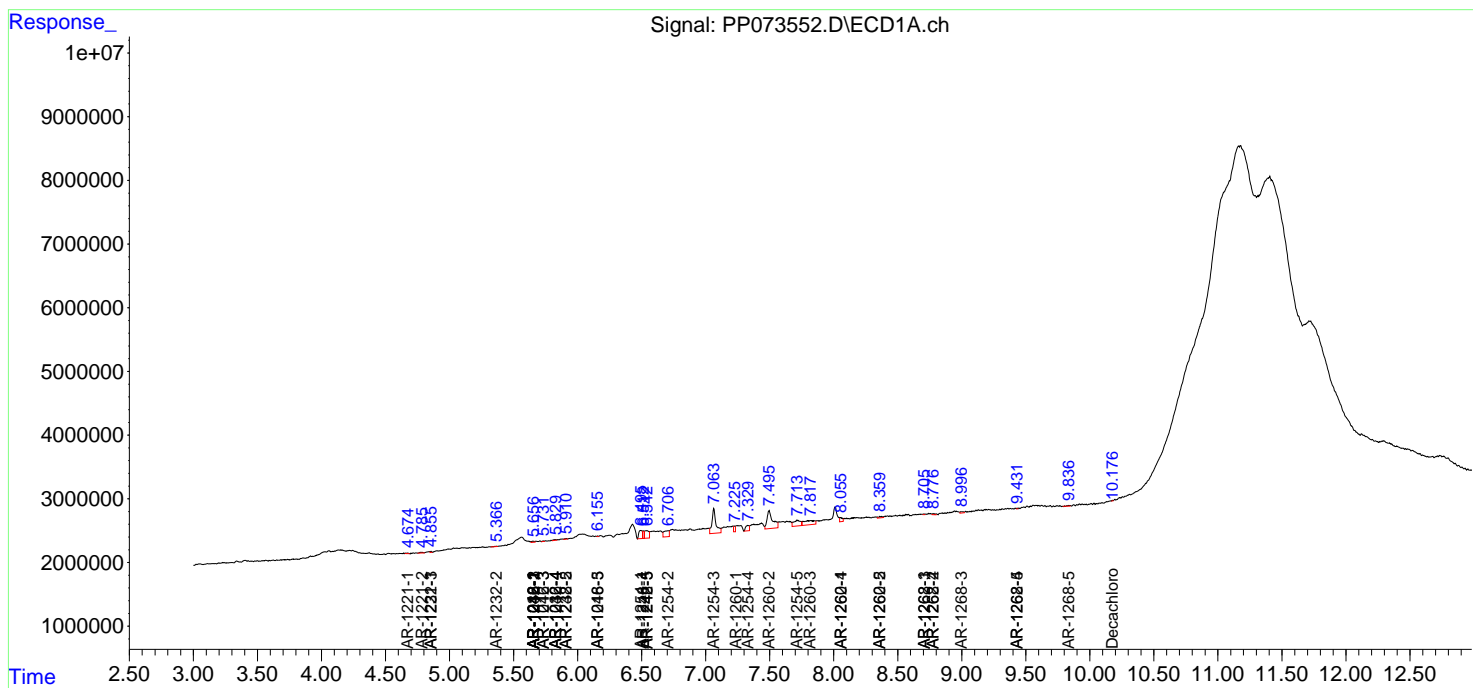
(f)=RT Delta > 1/2 Window (#)=Amounts differ by > 25% (m)=manual int.

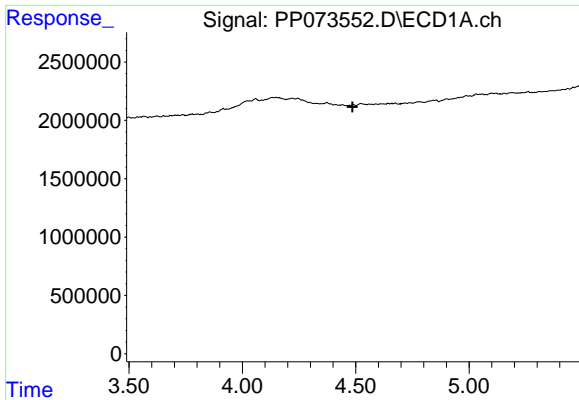
Data Path : Z:\pestpcbsrv\HPCHEM1\ECD\_P\Data\PP070825\  
 Data File : PP073552.D  
 Signal(s) : Signal #1: ECD1A.ch Signal #2: ECD2B.ch  
 Acq On : 07 Jul 2025 20:13  
 Operator : YP\AJ  
 Sample : HEXANE  
 Misc :  
 ALS Vial : 1 Sample Multiplier: 1

Instrument :  
 ECD\_P  
 ClientSampleId :  
 HEXANE

Integration File signal 1: autoint1.e  
 Integration File signal 2: autoint2.e  
 Quant Time: Jul 08 07:29:28 2025  
 Quant Method : Z:\pestpcbsrv\HPCHEM1\ECD\_P\methods\PP070825.M  
 Quant Title : GC EXTRACTABLES  
 QLast Update : Tue Jul 08 07:28:32 2025  
 Response via : Initial Calibration  
 Integrator: ChemStation

Volume Inj. : 2 µl  
 Signal #1 Phase : ZB-MR1 Signal #2 Phase: ZB-MR2  
 Signal #1 Info : 30Mx0.32mmx 0.50µ Signal #2 Info : 30M x 0.32mm x 0.25µm

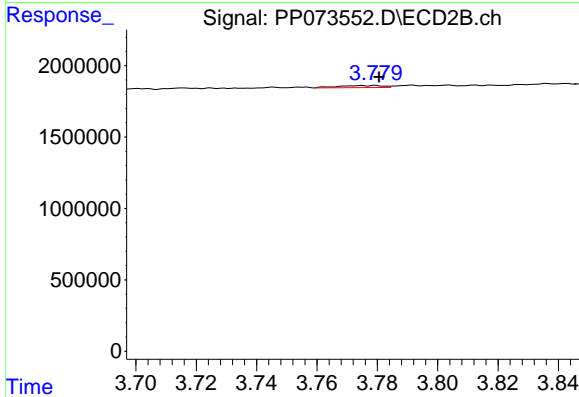




#1 Tetrachloro-m-xylene

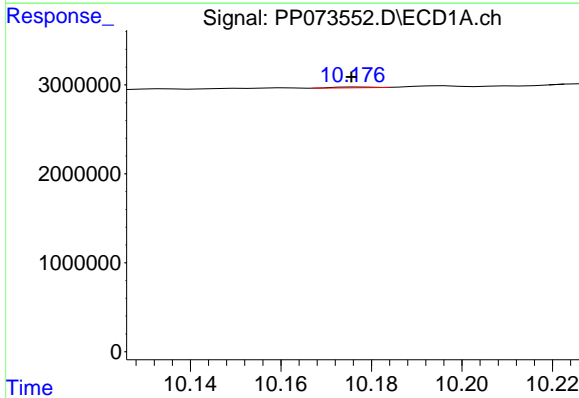
R.T.: 4.490 min  
 Delta R.T.: 0.005 min  
 Response: -6133  
 Conc: N.D.

Instrument :  
 ECD\_P  
 ClientSampleId :  
 HEXANE



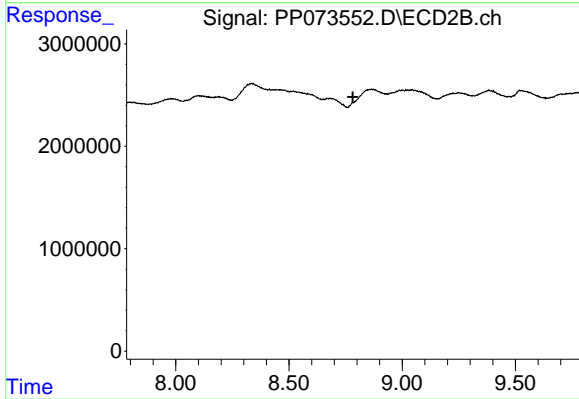
#1 Tetrachloro-m-xylene

R.T.: 3.779 min  
 Delta R.T.: -0.001 min  
 Response: 147442  
 Conc: 0.08 ng/ml



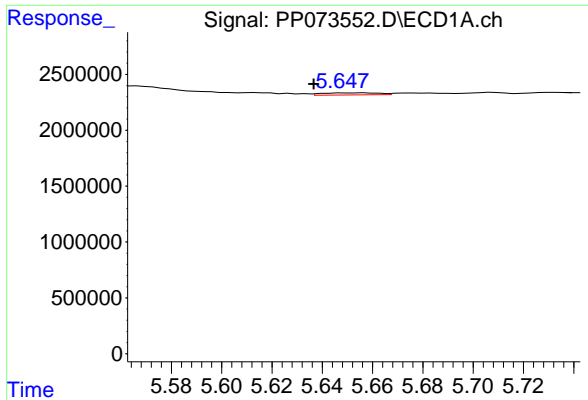
#2 Decachlorobiphenyl

R.T.: 10.178 min  
 Delta R.T.: 0.002 min  
 Response: 57490  
 Conc: 0.05 ng/ml



#2 Decachlorobiphenyl

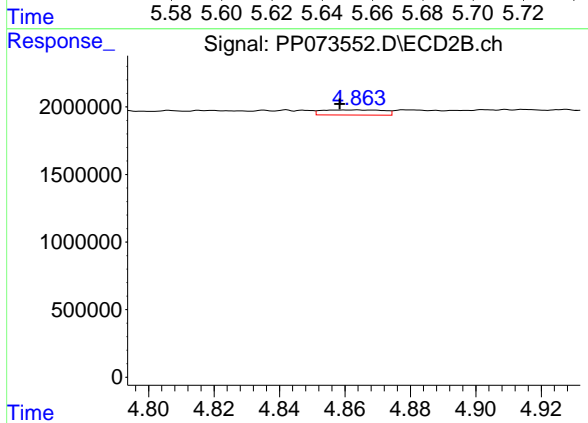
R.T.: 0.000 min  
 Exp R.T.: 8.782 min  
 Response: 0  
 Conc: N.D.



#3 AR-1016-1

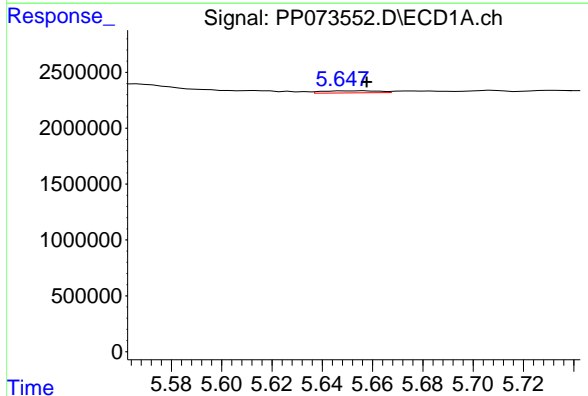
R.T.: 5.657 min  
 Delta R.T.: 0.020 min  
 Response: 290249  
 Conc: 6.11 ng/ml

Instrument :  
 ECD\_P  
 ClientSampleId :  
 HEXANE



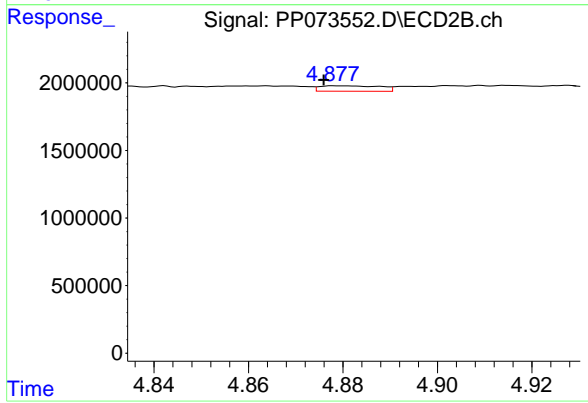
#3 AR-1016-1

R.T.: 4.864 min  
 Delta R.T.: 0.005 min  
 Response: 496692  
 Conc: 7.29 ng/ml



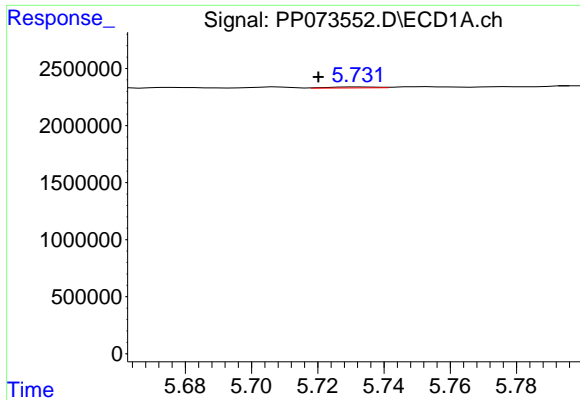
#4 AR-1016-2

R.T.: 5.657 min  
 Delta R.T.: 0.000 min  
 Response: 290249  
 Conc: 4.08 ng/ml



#4 AR-1016-2

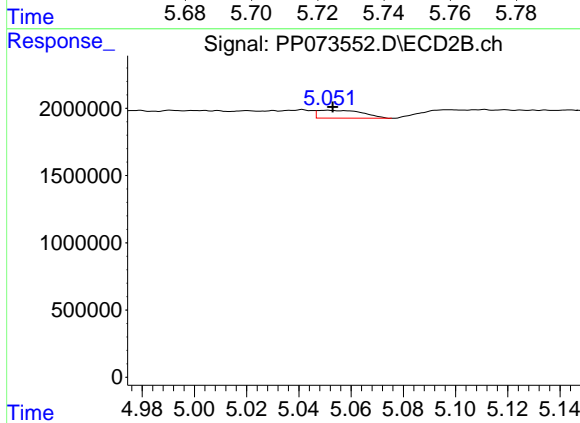
R.T.: 4.878 min  
 Delta R.T.: 0.002 min  
 Response: 354023  
 Conc: 3.47 ng/ml



#5 AR-1016-3

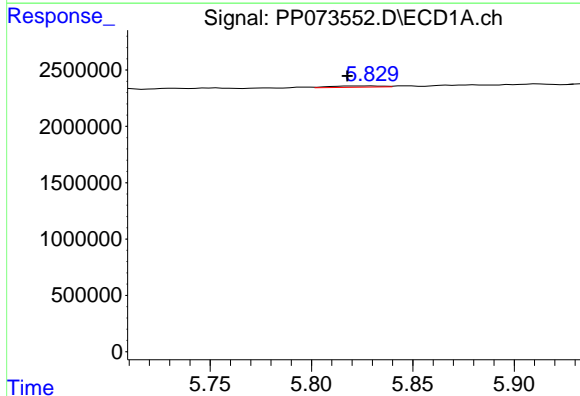
R.T.: 5.733 min  
 Delta R.T.: 0.012 min  
 Response: 82372  
 Conc: 1.89 ng/ml

Instrument :  
 ECD\_P  
 ClientSampleId :  
 HEXANE



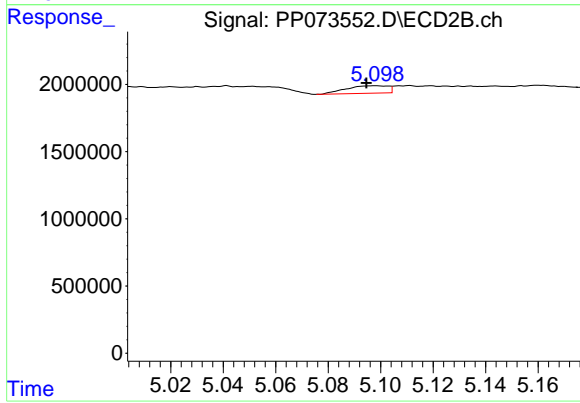
#5 AR-1016-3

R.T.: 5.051 min  
 Delta R.T.: -0.002 min  
 Response: 696398  
 Conc: 12.87 ng/ml



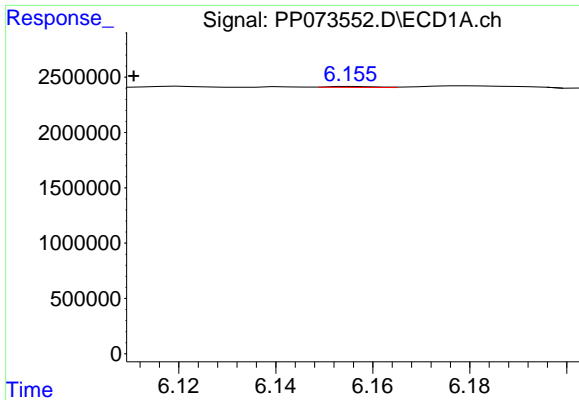
#6 AR-1016-4

R.T.: 5.830 min  
 Delta R.T.: 0.012 min  
 Response: 202070  
 Conc: 5.62 ng/ml



#6 AR-1016-4

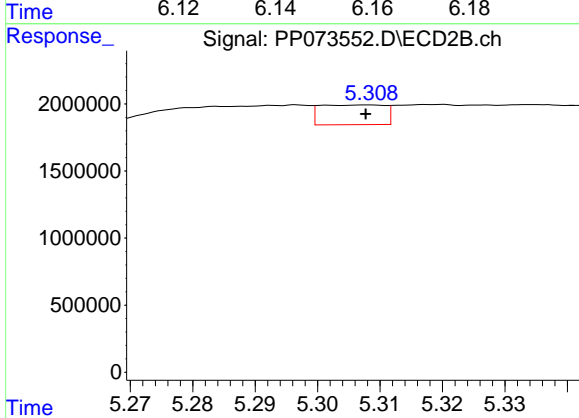
R.T.: 5.098 min  
 Delta R.T.: 0.003 min  
 Response: 620668  
 Conc: 14.14 ng/ml



#7 AR-1016-5

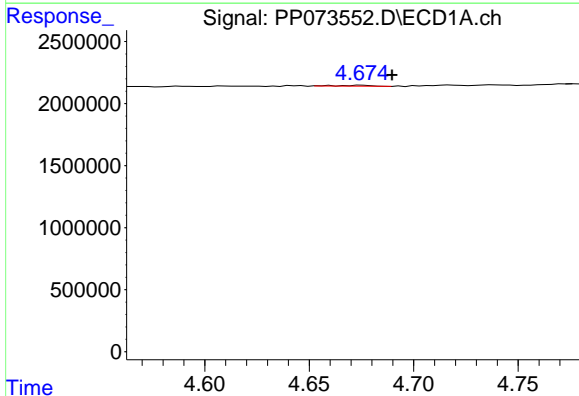
R.T.: 6.156 min  
 Delta R.T.: 0.046 min  
 Response: 57183  
 Conc: 1.83 ng/ml

Instrument :  
 ECD\_P  
 ClientSampleId :  
 HEXANE



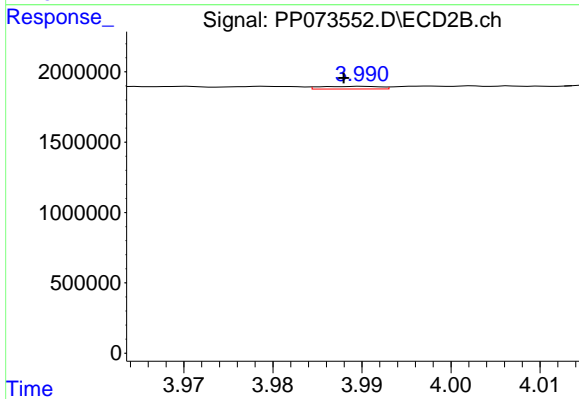
#7 AR-1016-5

R.T.: 5.308 min  
 Delta R.T.: 0.000 min  
 Response: 1059182  
 Conc: 19.41 ng/ml



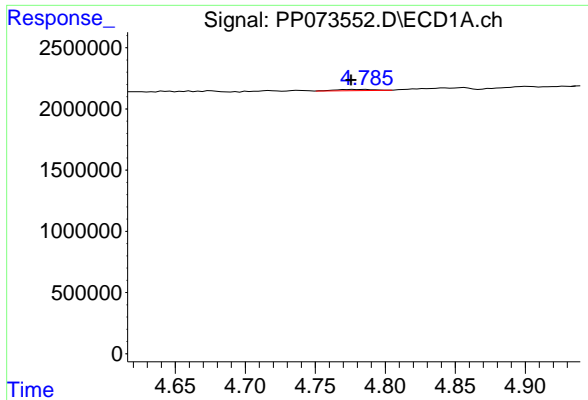
#8 AR-1221-1

R.T.: 4.676 min  
 Delta R.T.: -0.014 min  
 Response: 77353  
 Conc: 4.33 ng/ml



#8 AR-1221-1

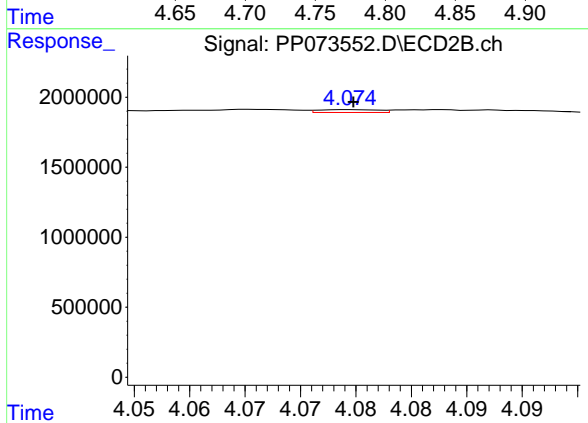
R.T.: 3.990 min  
 Delta R.T.: 0.002 min  
 Response: 87269  
 Conc: 3.23 ng/ml



#9 AR-1221-2

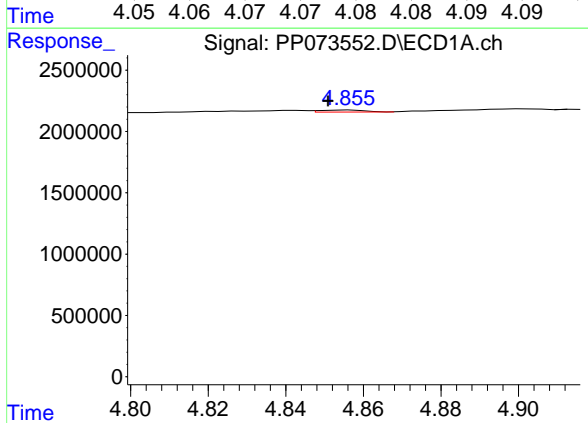
R.T.: 4.786 min  
 Delta R.T.: 0.010 min  
 Response: 188677  
 Conc: 13.97 ng/ml

Instrument :  
 ECD\_P  
 ClientSampleId :  
 HEXANE



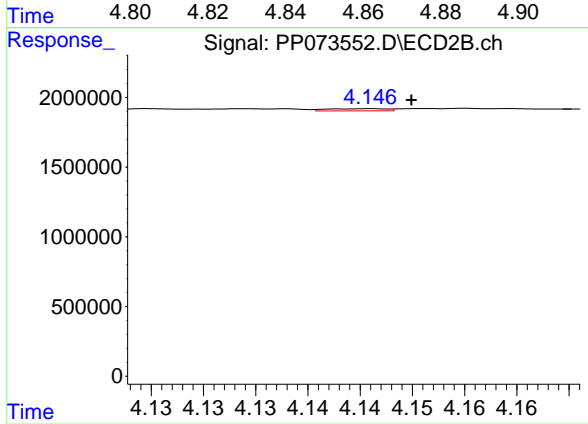
#9 AR-1221-2

R.T.: 4.075 min  
 Delta R.T.: 0.000 min  
 Response: 76801  
 Conc: 3.77 ng/ml



#10 AR-1221-3

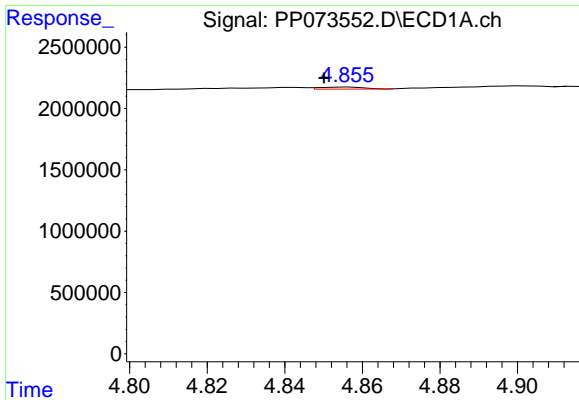
R.T.: 4.857 min  
 Delta R.T.: 0.006 min  
 Response: 130994  
 Conc: 3.15 ng/ml



#10 AR-1221-3

R.T.: 4.146 min  
 Delta R.T.: -0.004 min  
 Response: 61387  
 Conc: 1.00 ng/ml

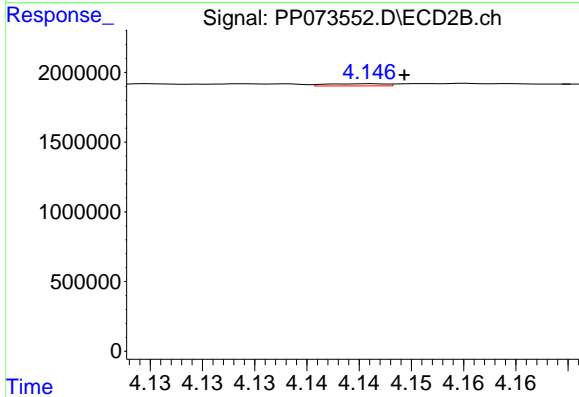




#11 AR-1232-1

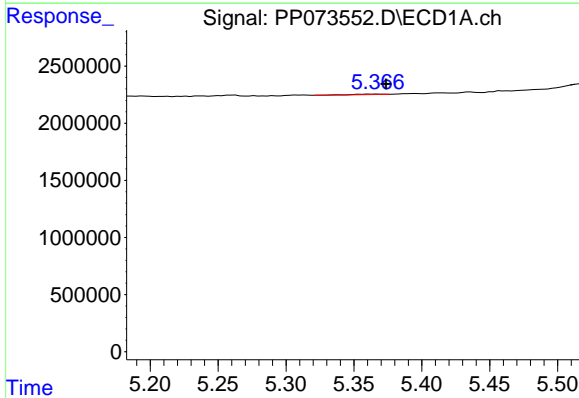
R.T.: 4.857 min  
 Delta R.T.: 0.006 min  
 Response: 130994  
 Conc: 4.01 ng/ml

Instrument :  
 ECD\_P  
 ClientSampleId :  
 HEXANE



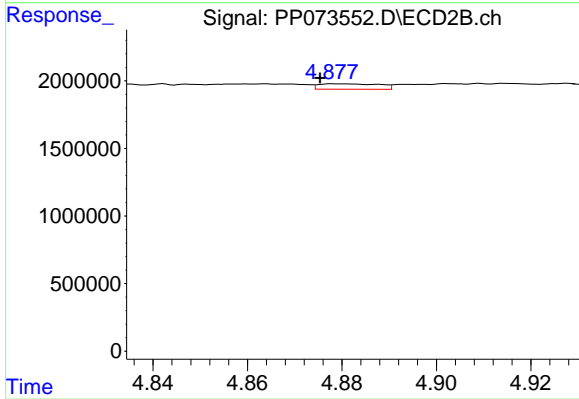
#11 AR-1232-1

R.T.: 4.146 min  
 Delta R.T.: -0.003 min  
 Response: 61387  
 Conc: 1.32 ng/ml



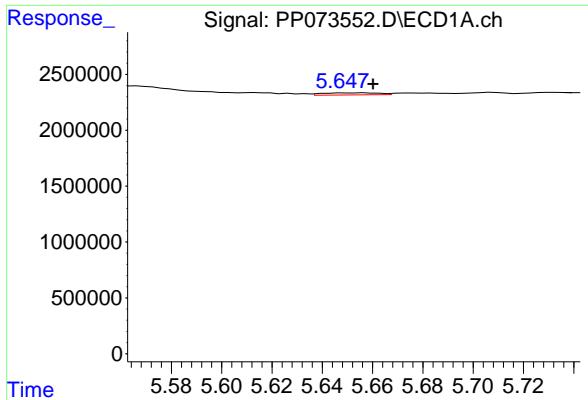
#12 AR-1232-2

R.T.: 5.367 min  
 Delta R.T.: -0.007 min  
 Response: 76414  
 Conc: 4.70 ng/ml



#12 AR-1232-2

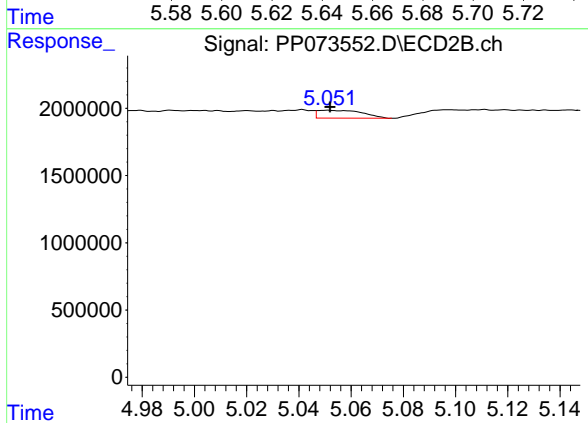
R.T.: 4.878 min  
 Delta R.T.: 0.003 min  
 Response: 354023  
 Conc: 7.43 ng/ml



#13 AR-1232-3

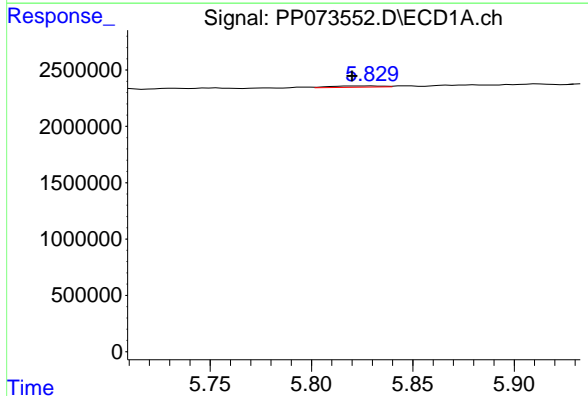
R.T.: 5.657 min  
 Delta R.T.: -0.003 min  
 Response: 290249  
 Conc: 8.80 ng/ml

Instrument :  
 ECD\_P  
 ClientSampleId :  
 HEXANE



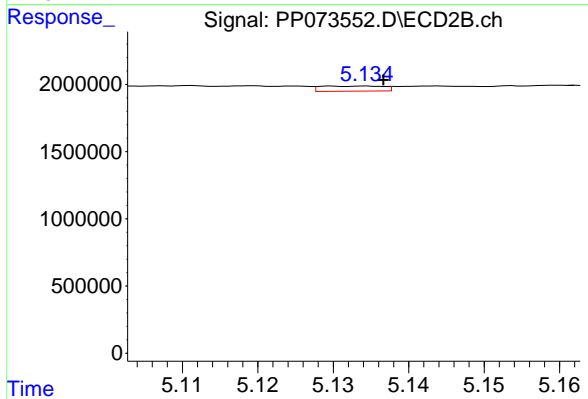
#13 AR-1232-3

R.T.: 5.051 min  
 Delta R.T.: 0.000 min  
 Response: 696398  
 Conc: 27.82 ng/ml



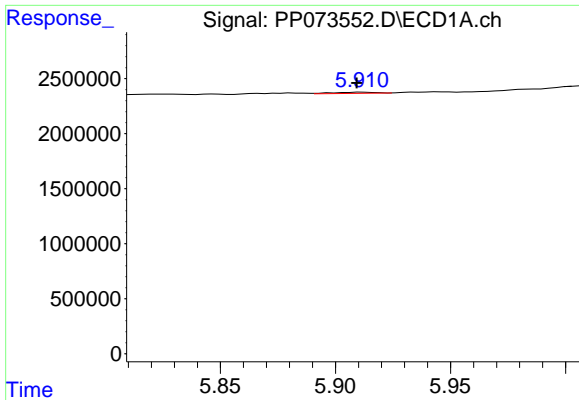
#14 AR-1232-4

R.T.: 5.830 min  
 Delta R.T.: 0.010 min  
 Response: 202070  
 Conc: 12.29 ng/ml



#14 AR-1232-4

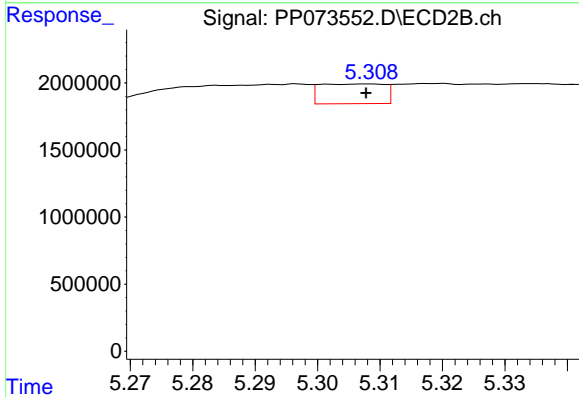
R.T.: 5.134 min  
 Delta R.T.: -0.002 min  
 Response: 218488  
 Conc: 10.09 ng/ml



#15 AR-1232-5

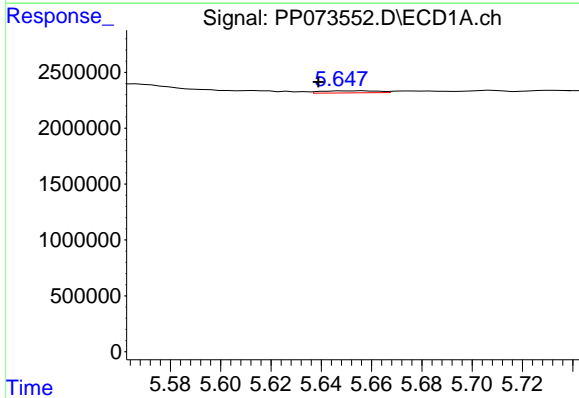
R.T.: 5.912 min  
 Delta R.T.: 0.002 min  
 Response: 134601  
 Conc: 12.73 ng/ml

Instrument :  
 ECD\_P  
 ClientSampleId :  
 HEXANE



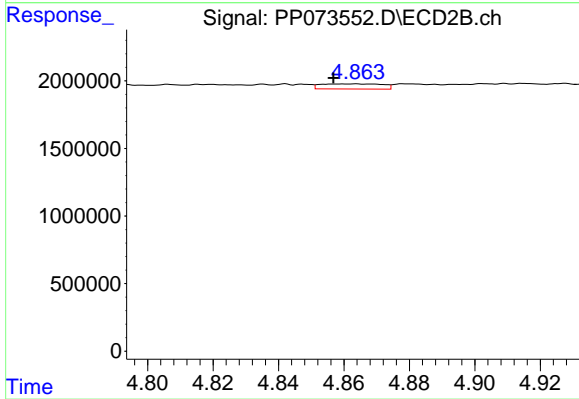
#15 AR-1232-5

R.T.: 5.308 min  
 Delta R.T.: 0.000 min  
 Response: 1059182  
 Conc: 46.94 ng/ml



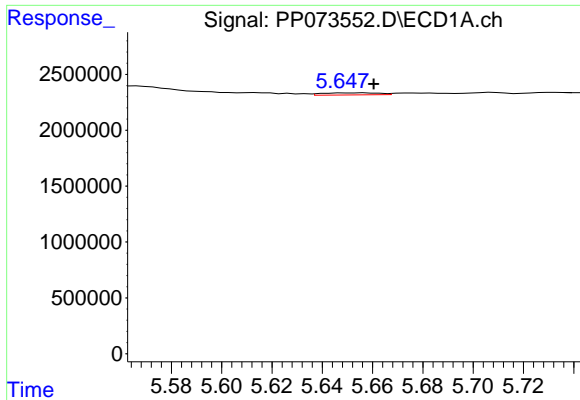
#16 AR-1242-1

R.T.: 5.657 min  
 Delta R.T.: 0.018 min  
 Response: 290249  
 Conc: 7.60 ng/ml



#16 AR-1242-1

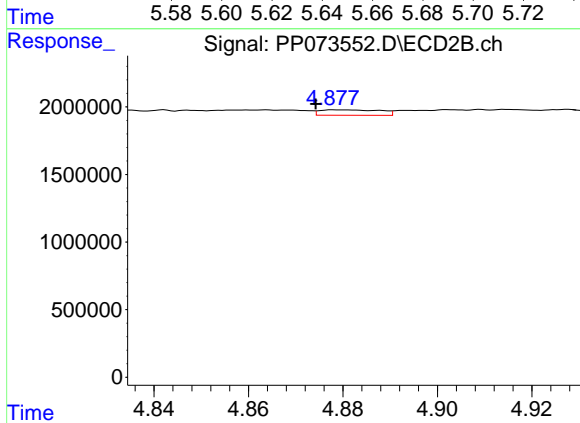
R.T.: 4.864 min  
 Delta R.T.: 0.007 min  
 Response: 496692  
 Conc: 8.60 ng/ml



#17 AR-1242-2

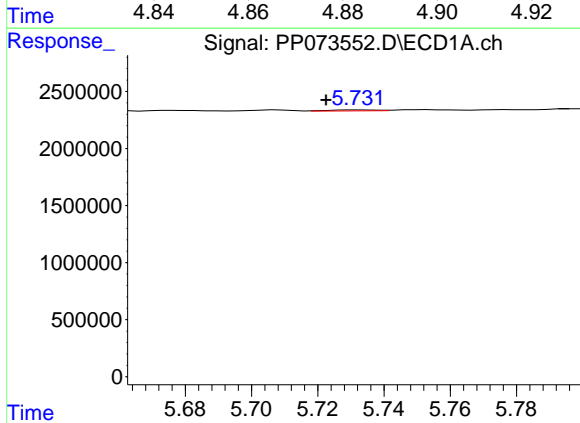
R.T.: 5.657 min  
 Delta R.T.: -0.004 min  
 Response: 290249  
 Conc: 4.85 ng/ml

Instrument :  
 ECD\_P  
 ClientSampleId :  
 HEXANE



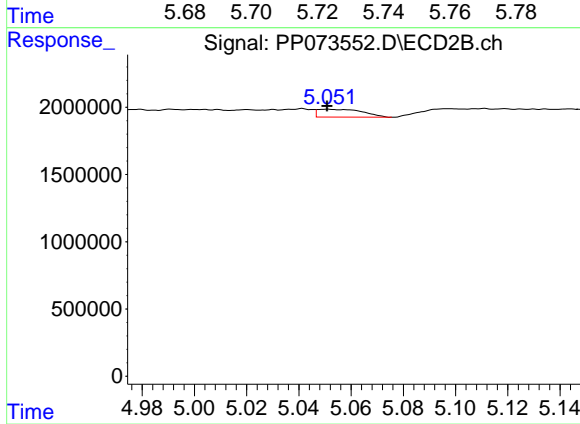
#17 AR-1242-2

R.T.: 4.878 min  
 Delta R.T.: 0.004 min  
 Response: 354023  
 Conc: 4.09 ng/ml



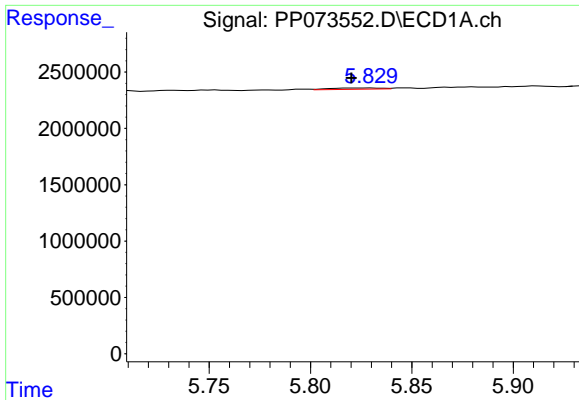
#18 AR-1242-3

R.T.: 5.733 min  
 Delta R.T.: 0.010 min  
 Response: 82372  
 Conc: 2.25 ng/ml



#18 AR-1242-3

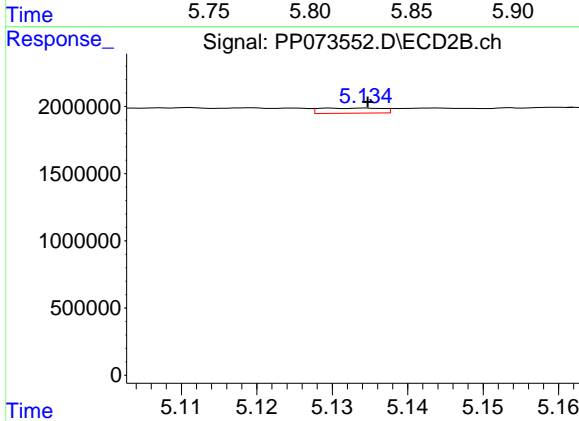
R.T.: 5.051 min  
 Delta R.T.: 0.000 min  
 Response: 696398  
 Conc: 15.16 ng/ml



#19 AR-1242-4

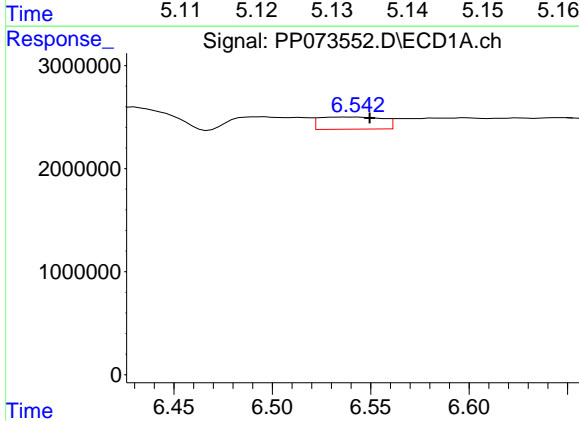
R.T.: 5.830 min  
 Delta R.T.: 0.009 min  
 Response: 202070  
 Conc: 6.29 ng/ml

Instrument :  
 ECD\_P  
 ClientSampleId :  
 HEXANE



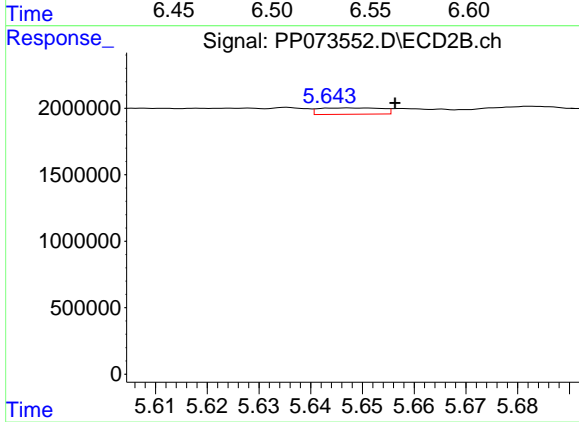
#19 AR-1242-4

R.T.: 5.134 min  
 Delta R.T.: 0.000 min  
 Response: 218488  
 Conc: 4.94 ng/ml



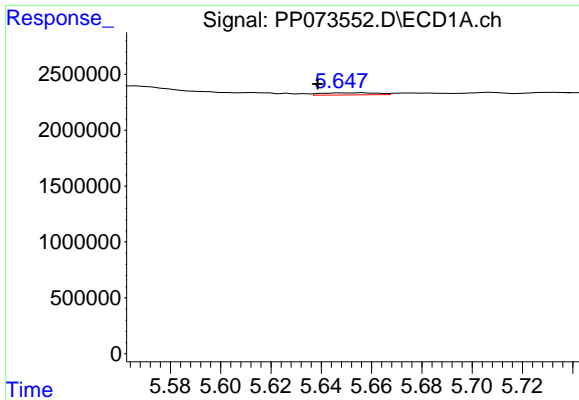
#20 AR-1242-5

R.T.: 6.543 min  
 Delta R.T.: -0.007 min  
 Response: 2650035  
 Conc: 80.95 ng/ml



#20 AR-1242-5

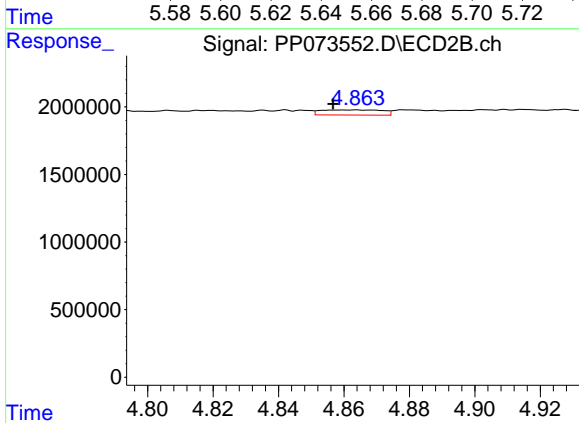
R.T.: 5.647 min  
 Delta R.T.: -0.009 min  
 Response: 407392  
 Conc: 7.37 ng/ml



#21 AR-1248-1

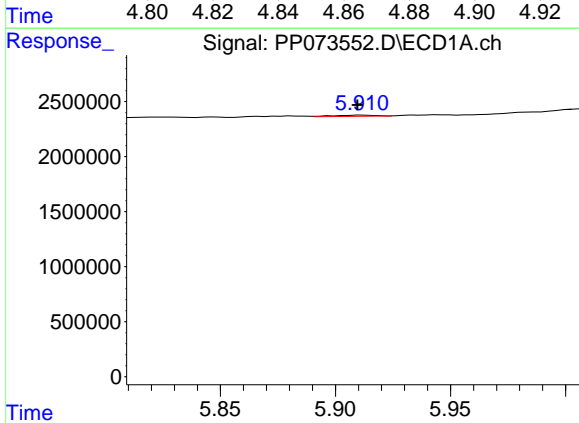
R.T.: 5.657 min  
 Delta R.T.: 0.018 min  
 Response: 290249  
 Conc: 9.40 ng/ml

Instrument :  
 ECD\_P  
 ClientSampleId :  
 HEXANE



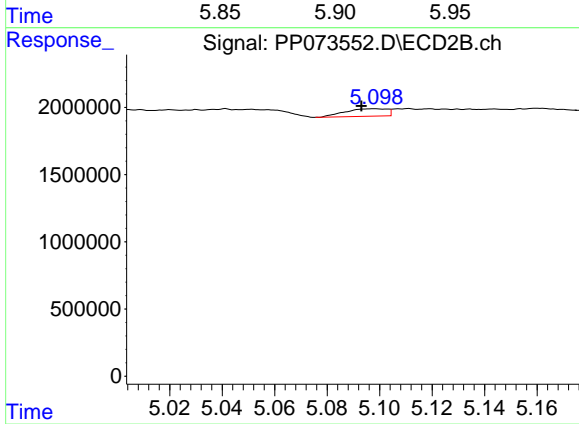
#21 AR-1248-1

R.T.: 4.864 min  
 Delta R.T.: 0.007 min  
 Response: 496692  
 Conc: 11.06 ng/ml



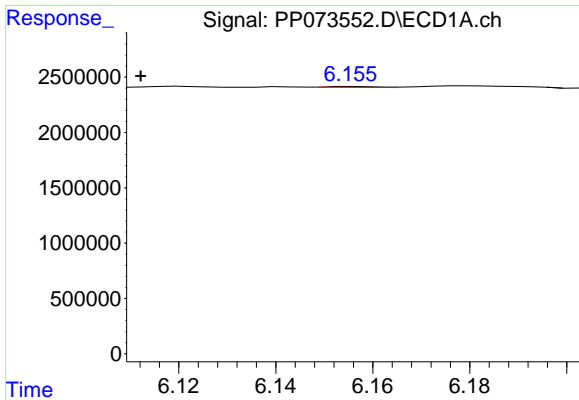
#22 AR-1248-2

R.T.: 5.912 min  
 Delta R.T.: 0.002 min  
 Response: 134601  
 Conc: 3.37 ng/ml



#22 AR-1248-2

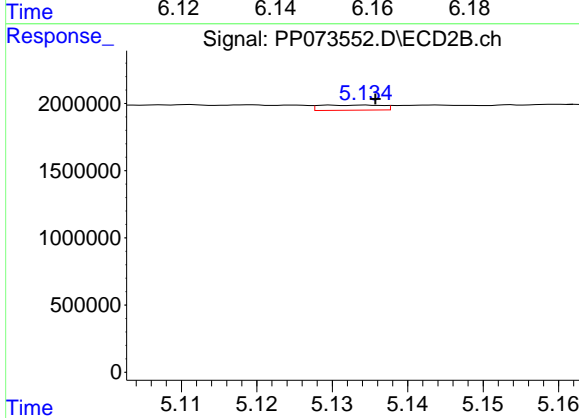
R.T.: 5.098 min  
 Delta R.T.: 0.005 min  
 Response: 620668  
 Conc: 10.09 ng/ml



#23 AR-1248-3

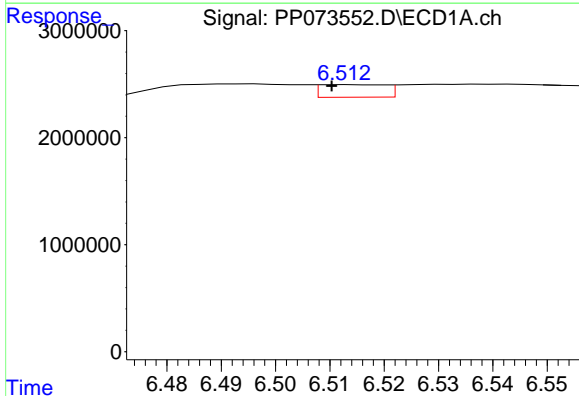
R.T.: 6.156 min  
 Delta R.T.: 0.044 min  
 Response: 57183  
 Conc: 1.29 ng/ml

Instrument :  
 ECD\_P  
 ClientSampleId :  
 HEXANE



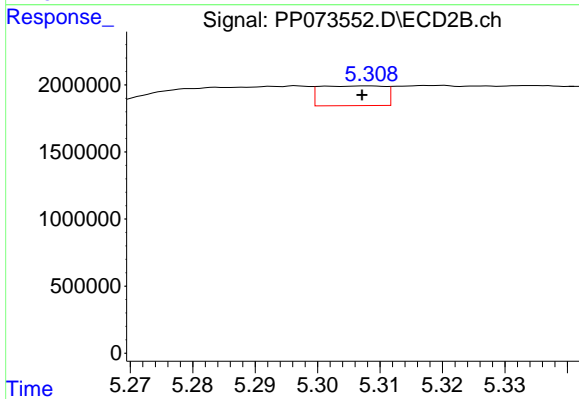
#23 AR-1248-3

R.T.: 5.134 min  
 Delta R.T.: -0.001 min  
 Response: 218488  
 Conc: 3.41 ng/ml



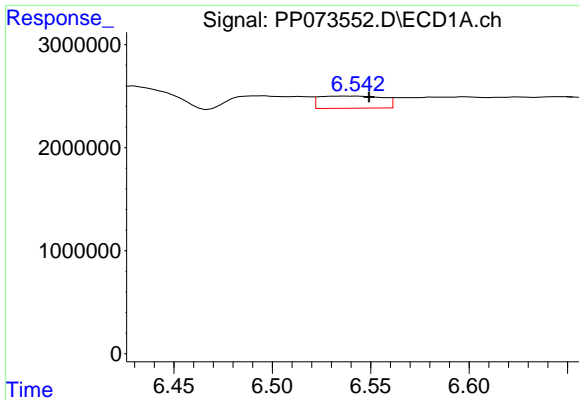
#24 AR-1248-4

R.T.: 6.514 min  
 Delta R.T.: 0.003 min  
 Response: 988372  
 Conc: 17.94 ng/ml



#24 AR-1248-4

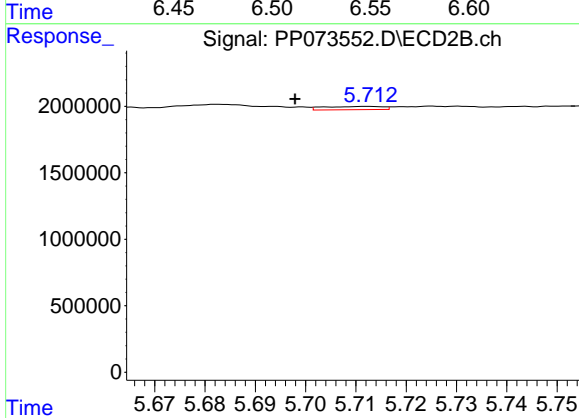
R.T.: 5.308 min  
 Delta R.T.: 0.001 min  
 Response: 1059182  
 Conc: 14.05 ng/ml



#25 AR-1248-5

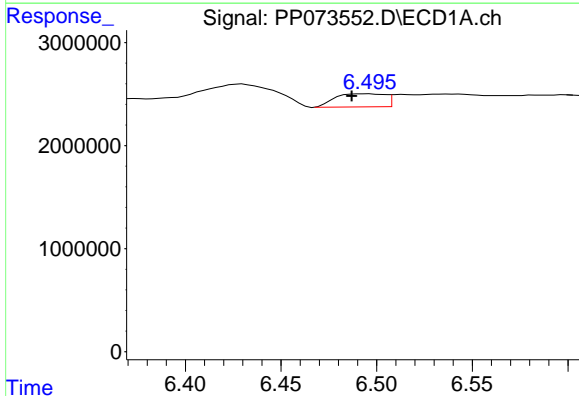
R.T.: 6.543 min  
 Delta R.T.: -0.006 min  
 Response: 2650035  
 Conc: 49.27 ng/ml

Instrument :  
 ECD\_P  
 ClientSampleId :  
 HEXANE



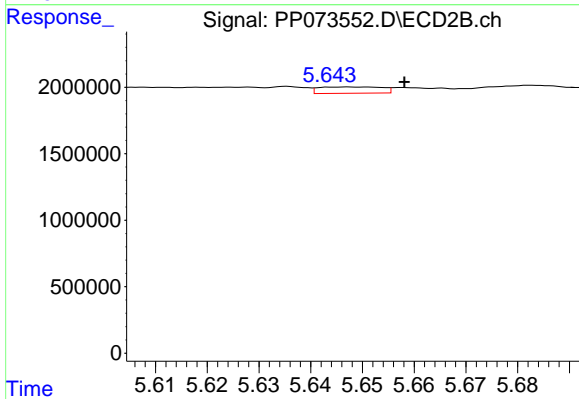
#25 AR-1248-5

R.T.: 5.712 min  
 Delta R.T.: 0.014 min  
 Response: 202092  
 Conc: 2.71 ng/ml



#26 AR-1254-1

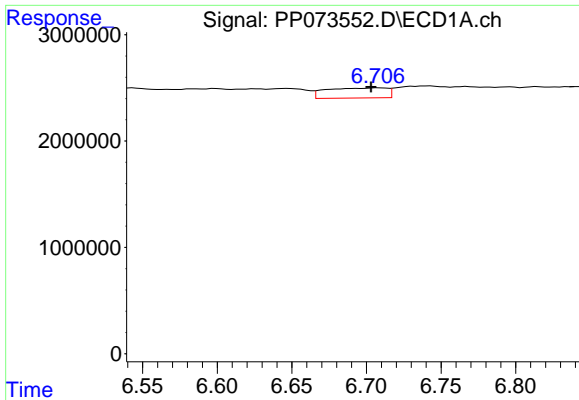
R.T.: 6.496 min  
 Delta R.T.: 0.009 min  
 Response: 2303139  
 Conc: 42.98 ng/ml



#26 AR-1254-1

R.T.: 5.647 min  
 Delta R.T.: -0.011 min  
 Response: 407392  
 Conc: 3.51 ng/ml

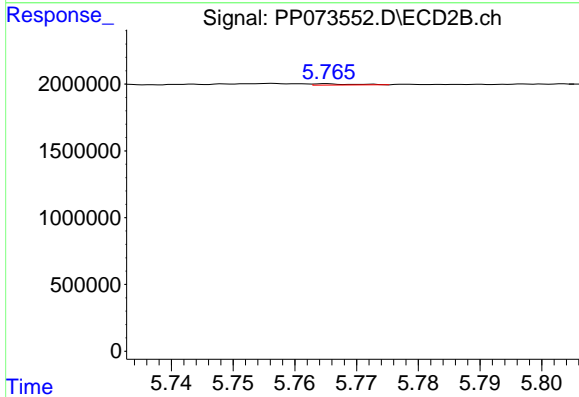




#27 AR-1254-2

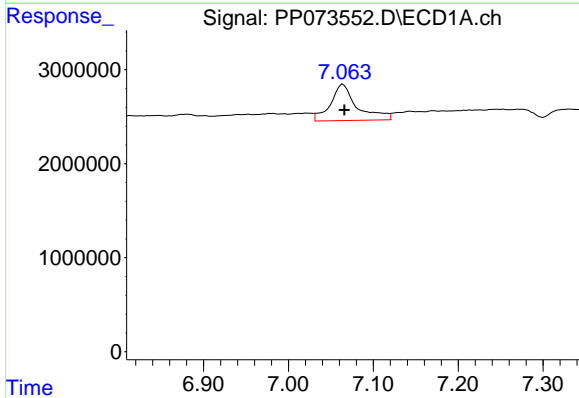
R.T.: 6.708 min  
 Delta R.T.: 0.005 min  
 Response: 2663298  
 Conc: 31.98 ng/ml

Instrument :  
 ECD\_P  
 ClientSampleId :  
 HEXANE



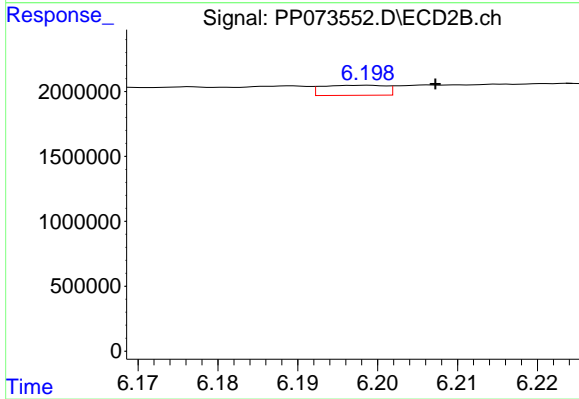
#27 AR-1254-2

R.T.: 5.765 min  
 Delta R.T.: -0.041 min  
 Response: 43023  
 Conc: 0.43 ng/ml



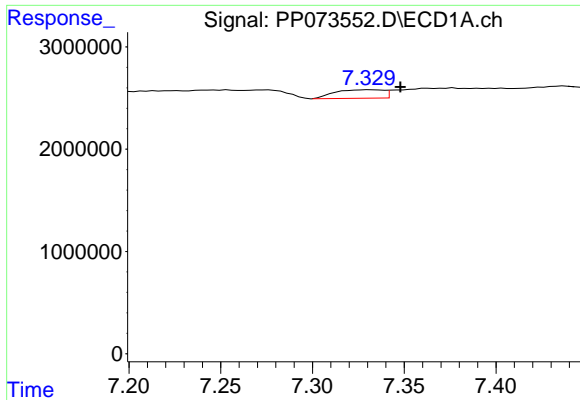
#28 AR-1254-3

R.T.: 7.064 min  
 Delta R.T.: -0.002 min  
 Response: 8414820  
 Conc: 95.26 ng/ml



#28 AR-1254-3

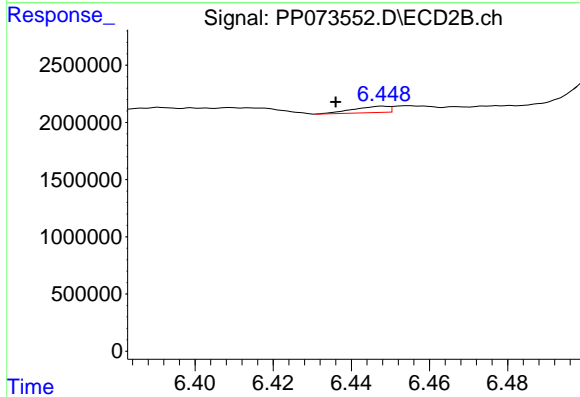
R.T.: 6.199 min  
 Delta R.T.: -0.009 min  
 Response: 429707  
 Conc: 2.78 ng/ml



#29 AR-1254-4

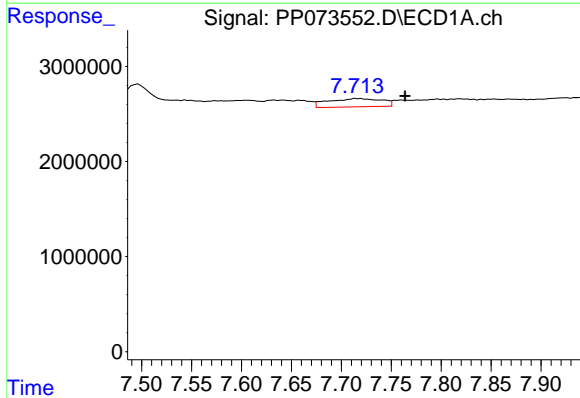
R.T.: 7.331 min  
 Delta R.T.: -0.017 min  
 Response: 1511035  
 Conc: 19.21 ng/ml

Instrument :  
 ECD\_P  
 ClientSampleId :  
 HEXANE



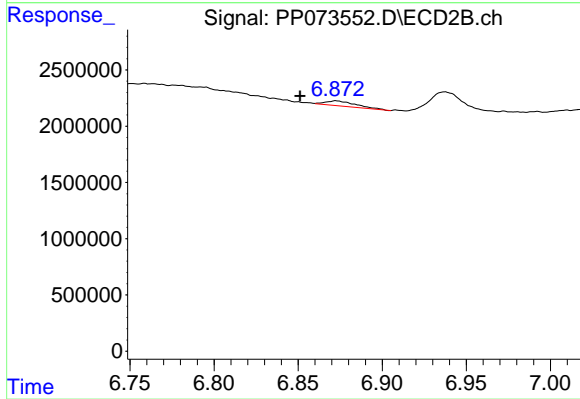
#29 AR-1254-4

R.T.: 6.448 min  
 Delta R.T.: 0.012 min  
 Response: 348471  
 Conc: 3.69 ng/ml



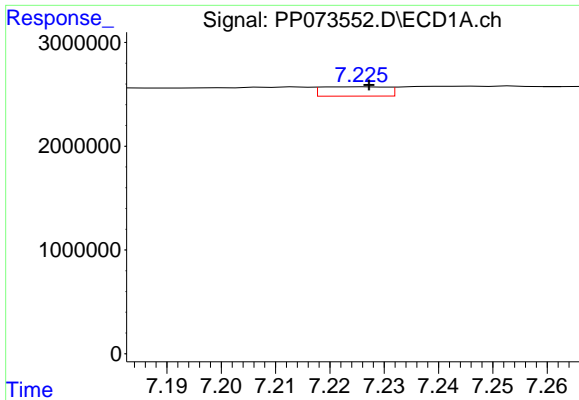
#30 AR-1254-5

R.T.: 7.715 min  
 Delta R.T.: -0.049 min  
 Response: 3281366  
 Conc: 44.54 ng/ml



#30 AR-1254-5

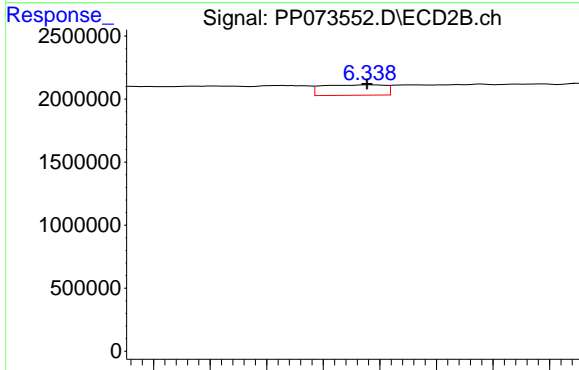
R.T.: 6.872 min  
 Delta R.T.: 0.021 min  
 Response: 551387  
 Conc: 4.13 ng/ml



#31 AR-1260-1

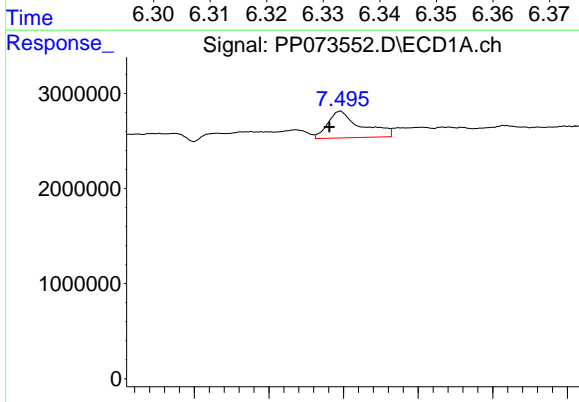
R.T.: 7.226 min  
 Delta R.T.: 0.000 min  
 Response: 755604  
 Conc: 12.82 ng/ml

Instrument :  
 ECD\_P  
 ClientSampleId :  
 HEXANE



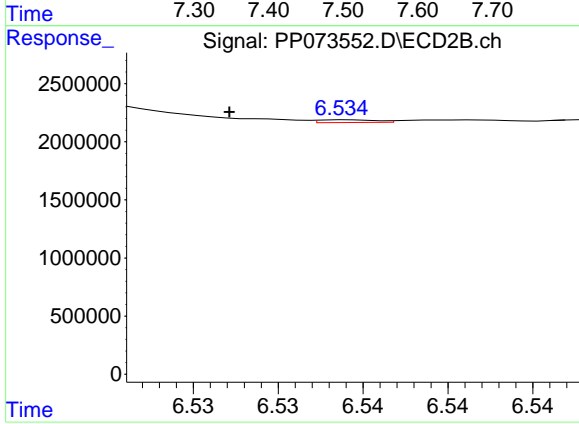
#31 AR-1260-1

R.T.: 6.338 min  
 Delta R.T.: 0.000 min  
 Response: 633498  
 Conc: 6.49 ng/ml



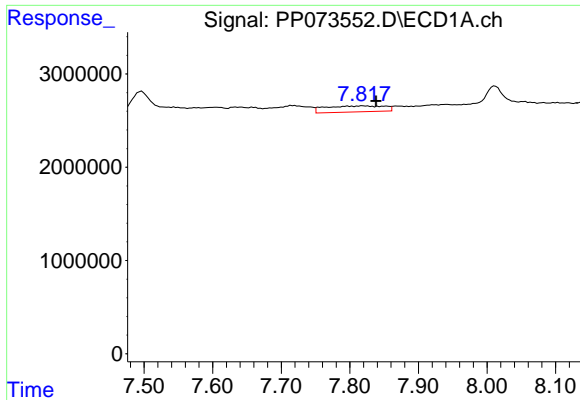
#32 AR-1260-2

R.T.: 7.497 min  
 Delta R.T.: 0.015 min  
 Response: 8686467  
 Conc: 90.64 ng/ml



#32 AR-1260-2

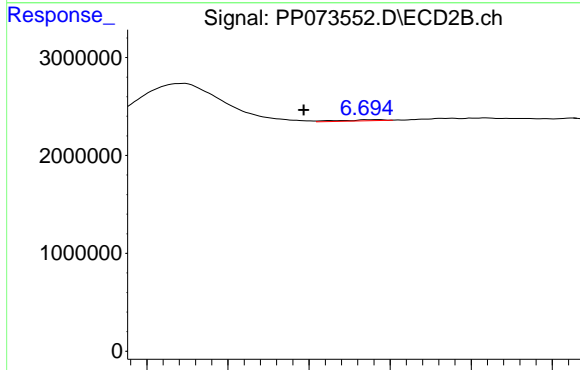
R.T.: 6.534 min  
 Delta R.T.: 0.007 min  
 Response: 56881  
 Conc: 0.46 ng/ml



#33 AR-1260-3

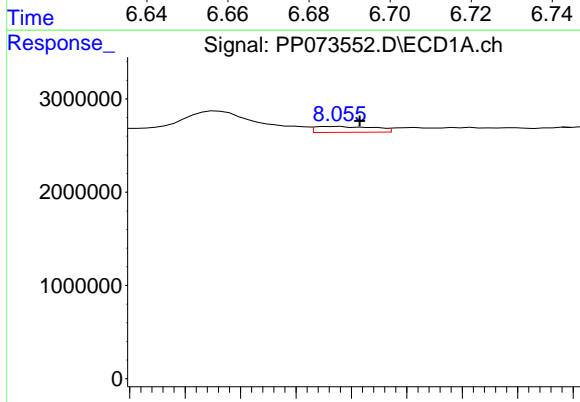
R.T.: 7.819 min  
 Delta R.T.: -0.020 min  
 Response: 3880430  
 Conc: 53.11 ng/ml

Instrument :  
 ECD\_P  
 ClientSampleId :  
 HEXANE



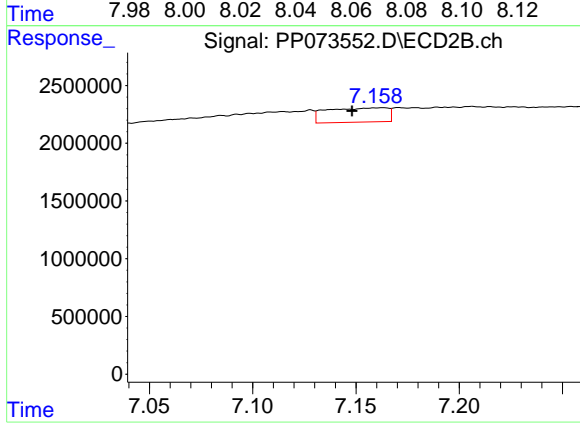
#33 AR-1260-3

R.T.: 6.697 min  
 Delta R.T.: 0.019 min  
 Response: 81062  
 Conc: 0.74 ng/ml



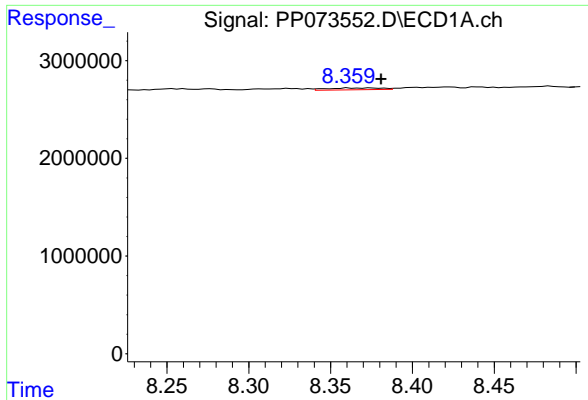
#34 AR-1260-4

R.T.: 8.056 min  
 Delta R.T.: -0.007 min  
 Response: 946806  
 Conc: 14.50 ng/ml



#34 AR-1260-4

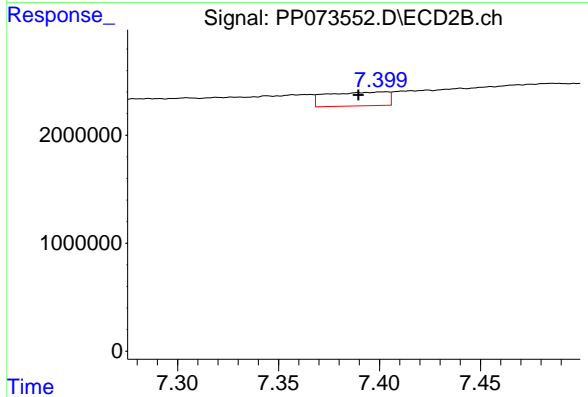
R.T.: 7.163 min  
 Delta R.T.: 0.015 min  
 Response: 2537068  
 Conc: 28.38 ng/ml



#35 AR-1260-5

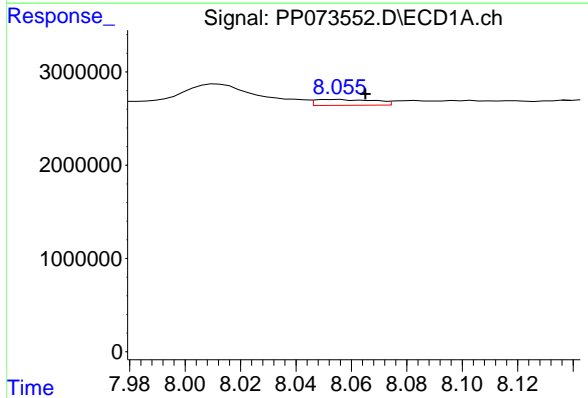
R.T.: 8.361 min  
 Delta R.T.: -0.020 min  
 Response: 422969  
 Conc: 2.80 ng/ml

Instrument :  
 ECD\_P  
 ClientSampleId :  
 HEXANE



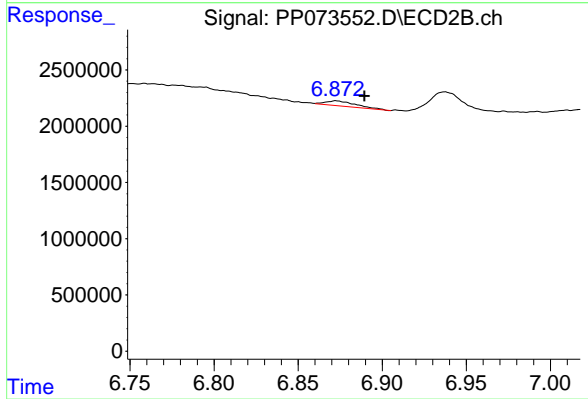
#35 AR-1260-5

R.T.: 7.403 min  
 Delta R.T.: 0.014 min  
 Response: 2680183  
 Conc: 11.93 ng/ml



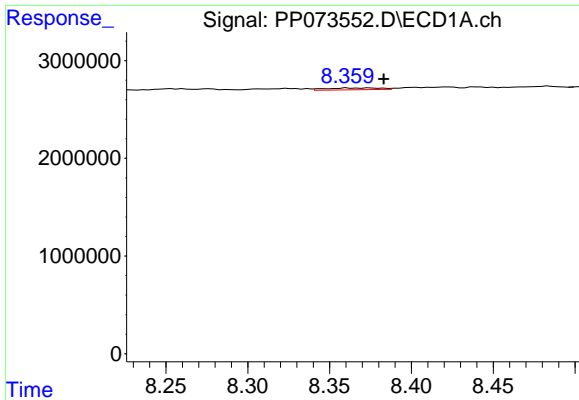
#36 AR-1262-1

R.T.: 8.056 min  
 Delta R.T.: -0.010 min  
 Response: 946806  
 Conc: 10.88 ng/ml



#36 AR-1262-1

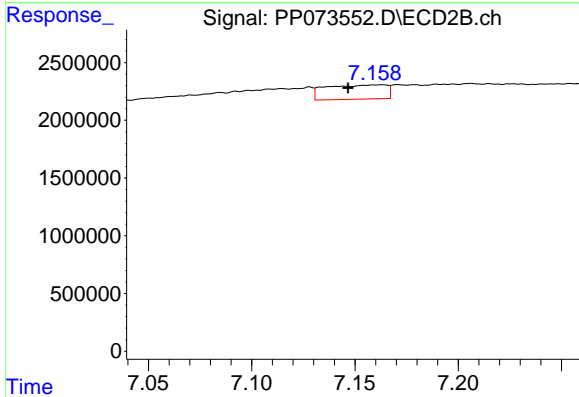
R.T.: 6.872 min  
 Delta R.T.: -0.017 min  
 Response: 551387  
 Conc: 3.73 ng/ml



#37 AR-1262-2

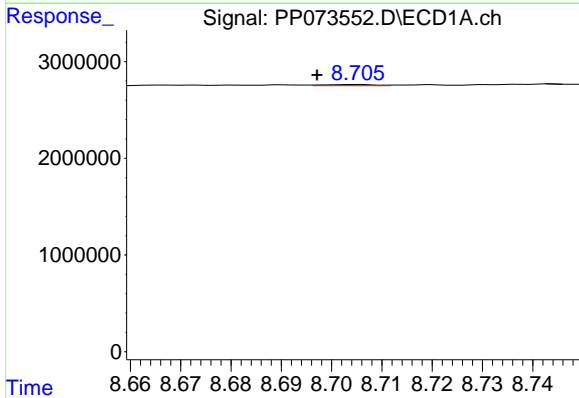
R.T.: 8.361 min  
 Delta R.T.: -0.023 min  
 Response: 422969  
 Conc: 2.14 ng/ml

Instrument :  
 ECD\_P  
 ClientSampleId :  
 HEXANE



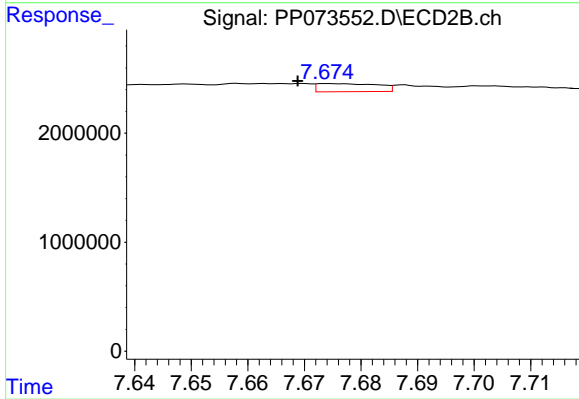
#37 AR-1262-2

R.T.: 7.163 min  
 Delta R.T.: 0.017 min  
 Response: 2537068  
 Conc: 19.85 ng/ml



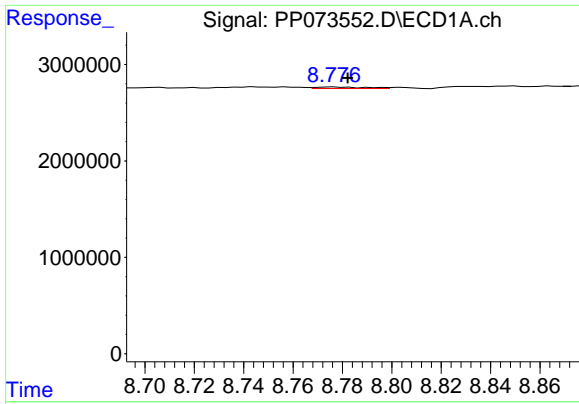
#38 AR-1262-3

R.T.: 8.706 min  
 Delta R.T.: 0.009 min  
 Response: 77797  
 Conc: 0.62 ng/ml



#38 AR-1262-3

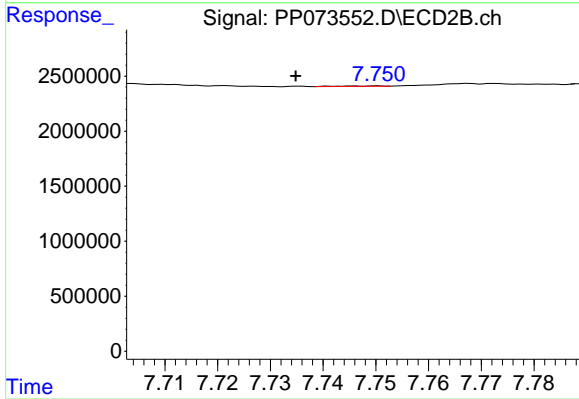
R.T.: 7.674 min  
 Delta R.T.: 0.005 min  
 Response: 551266  
 Conc: 4.83 ng/ml



#39 AR-1262-4

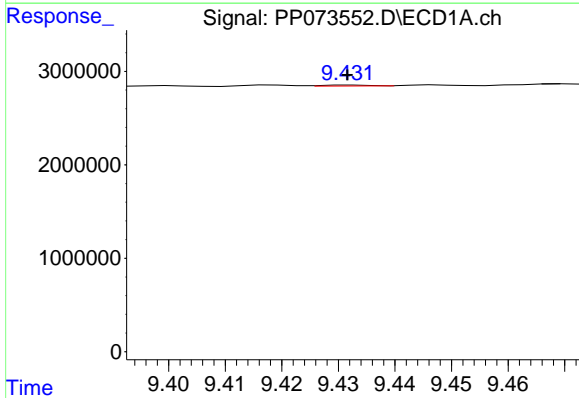
R.T.: 8.777 min  
 Delta R.T.: -0.005 min  
 Response: 233471  
 Conc: 2.50 ng/ml

Instrument :  
 ECD\_P  
 ClientSampleId :  
 HEXANE



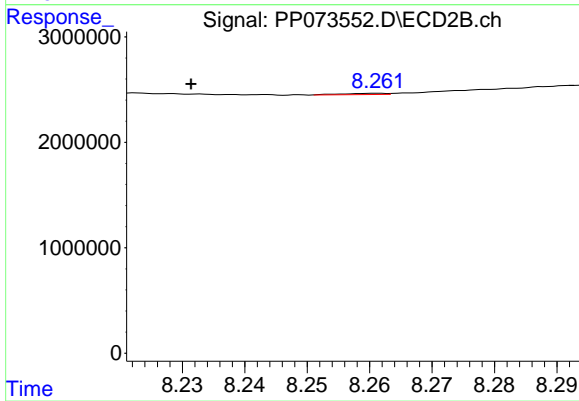
#39 AR-1262-4

R.T.: 7.750 min  
 Delta R.T.: 0.016 min  
 Response: 23339  
 Conc: 0.13 ng/ml



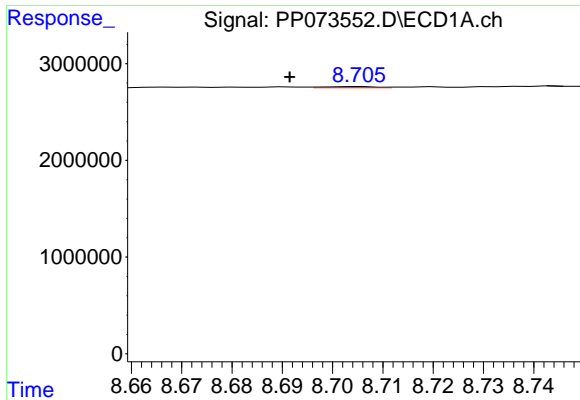
#40 AR-1262-5

R.T.: 9.433 min  
 Delta R.T.: 0.001 min  
 Response: 56765  
 Conc: 0.90 ng/ml



#40 AR-1262-5

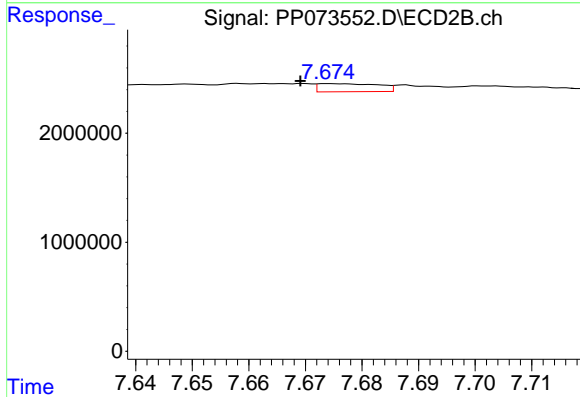
R.T.: 8.261 min  
 Delta R.T.: 0.030 min  
 Response: 58650  
 Conc: 0.69 ng/ml



#41 AR-1268-1

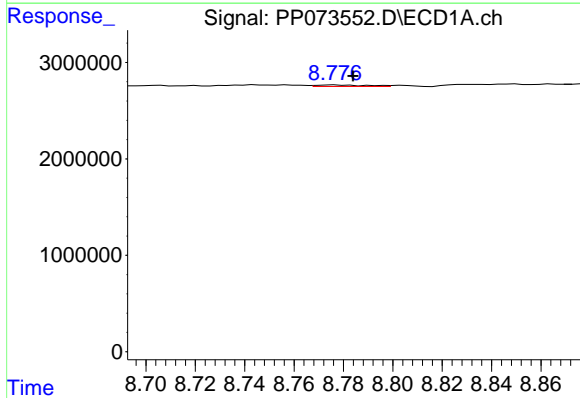
R.T.: 8.706 min  
 Delta R.T.: 0.014 min  
 Response: 77797  
 Conc: 0.35 ng/ml

Instrument :  
 ECD\_P  
 ClientSampleId :  
 HEXANE



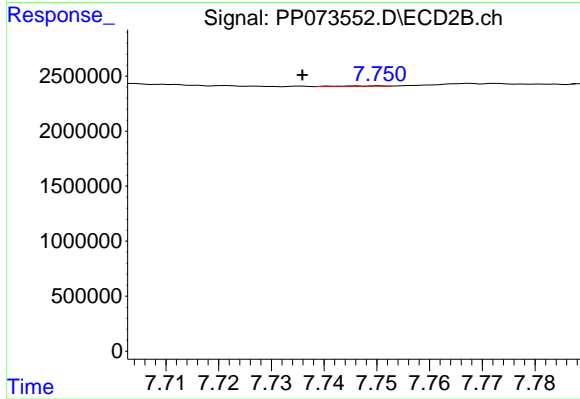
#41 AR-1268-1

R.T.: 7.674 min  
 Delta R.T.: 0.005 min  
 Response: 551266  
 Conc: 1.79 ng/ml



#42 AR-1268-2

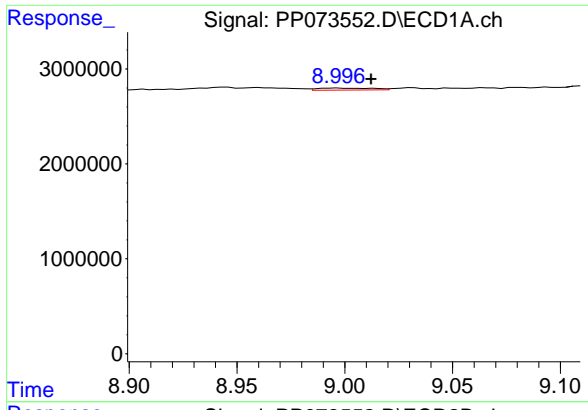
R.T.: 8.777 min  
 Delta R.T.: -0.007 min  
 Response: 233471  
 Conc: 1.23 ng/ml



#42 AR-1268-2

R.T.: 7.750 min  
 Delta R.T.: 0.014 min  
 Response: 23339  
 Conc: 0.09 ng/ml

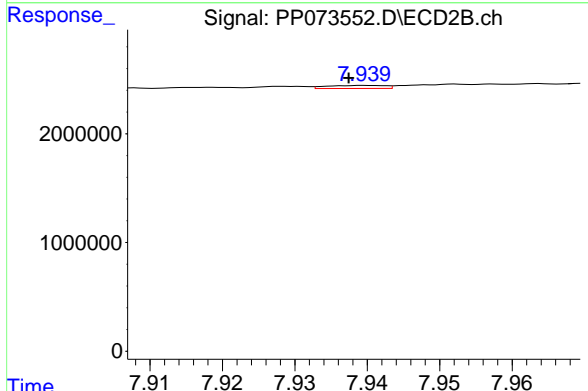




#43 AR-1268-3

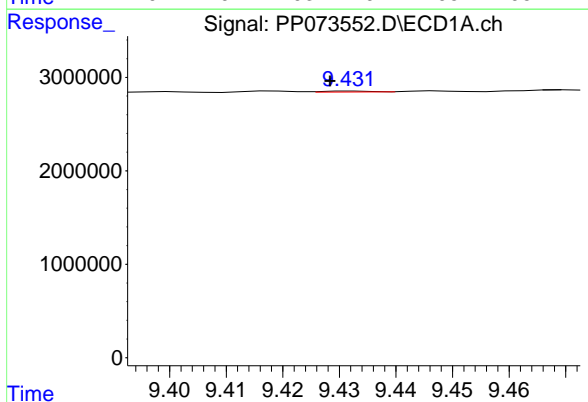
R.T.: 8.997 min  
 Delta R.T.: -0.015 min  
 Response: 373685  
 Conc: 2.26 ng/ml

Instrument :  
 ECD\_P  
 ClientSampleId :  
 HEXANE



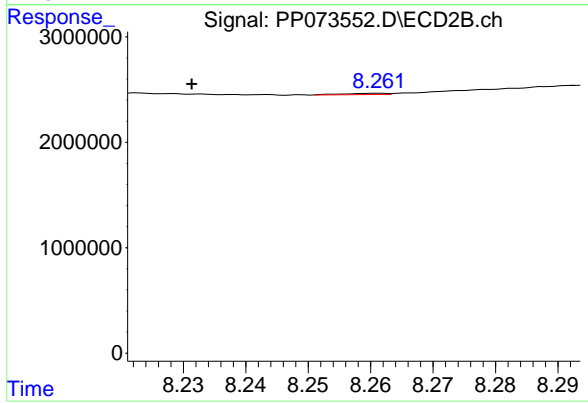
#43 AR-1268-3

R.T.: 7.940 min  
 Delta R.T.: 0.002 min  
 Response: 155747  
 Conc: 0.69 ng/ml



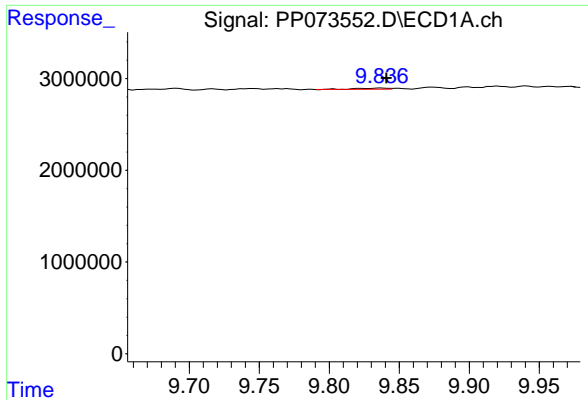
#44 AR-1268-4

R.T.: 9.433 min  
 Delta R.T.: 0.004 min  
 Response: 56765  
 Conc: 0.82 ng/ml



#44 AR-1268-4

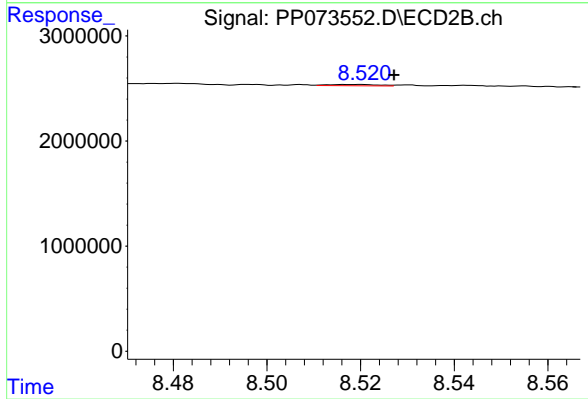
R.T.: 8.261 min  
 Delta R.T.: 0.030 min  
 Response: 58650  
 Conc: 0.63 ng/ml



#45 AR-1268-5

R.T.: 9.837 min  
Delta R.T.: -0.004 min  
Response: 176134  
Conc: 0.38 ng/ml

Instrument :  
ECD\_P  
ClientSampleId :  
HEXANE



#45 AR-1268-5

R.T.: 8.520 min  
Delta R.T.: -0.007 min  
Response: 92618  
Conc: 0.15 ng/ml