

Data Path : Z:\pestpcbsrv\HPCHEM1\ECD_P\Data\PP070825\
 Data File : PP073553.D
 Signal(s) : Signal #1: ECD1A.ch Signal #2: ECD2B.ch
 Acq On : 07 Jul 2025 20:30
 Operator : YP\AJ
 Sample : I.BLK
 Misc :
 ALS Vial : 2 Sample Multiplier: 1

Instrument :
 ECD_P
 ClientSampleId :
 I.BLK

Integration File signal 1: autoint1.e
 Integration File signal 2: autoint2.e
 Quant Time: Jul 08 07:30:29 2025
 Quant Method : Z:\pestpcbsrv\HPCHEM1\ECD_P\methods\PP070825.M
 Quant Title : GC EXTRACTABLES
 QLast Update : Tue Jul 08 07:28:32 2025
 Response via : Initial Calibration
 Integrator: ChemStation

Volume Inj. : 2 µl
 Signal #1 Phase : ZB-MR1 Signal #2 Phase: ZB-MR2
 Signal #1 Info : 30Mx0.32mmx 0.50µ Signal #2 Info : 30M x 0.32mm x 0.25µm

Compound	RT#1	RT#2	Resp#1	Resp#2	ng/ml	ng/ml
System Monitoring Compounds						
1) SA Tetrachlo...	4.489	3.780	22153163	29828480	16.176	16.191
2) SA Decachlor...	10.178	8.781	18922819	22582394	17.344	17.067
Target Compounds						
3) L1 AR-1016-1	5.640	4.856	197119	122902	4.149	1.803 #
4) L1 AR-1016-2	5.658	4.869	254649	88537	3.576	0.869 #
5) L1 AR-1016-3	5.714	5.049	687397	52774	15.743	0.975 #
6) L1 AR-1016-4	5.815	5.097	116062	146629	3.229	3.342
7) L1 AR-1016-5	6.112	5.321	27893	124312	0.890	2.278 #
8) L2 AR-1221-1	4.689	3.990	116820	153585	6.538	5.679
9) L2 AR-1221-2	4.795	4.077	520045	622329	38.509	30.566
10) L2 AR-1221-3	4.846	4.154	196439	79178	4.722	1.289 #
11) L3 AR-1232-1	4.846	4.154	196439	79178	6.016	1.699 #
12) L3 AR-1232-2	5.402	4.869	76261	88537	4.692	1.858 #
13) L3 AR-1232-3	5.658	5.049	254649	52774	7.718	2.109 #
14) L3 AR-1232-4	5.815	5.138	116062	48994	7.058	2.262 #
15) L3 AR-1232-5	5.914	5.321	164454	124312	15.558	5.509 #
16) L4 AR-1242-1	5.640	4.856	197119	122902	5.162	2.128 #
17) L4 AR-1242-2	5.658	4.869	254649	88537	4.253	1.024 #
18) L4 AR-1242-3	5.714	5.049	687397	52774	18.771	1.149 #
19) L4 AR-1242-4	5.815	5.138	116062	48994	3.612	1.107 #
20) L4 AR-1242-5	6.564	5.637	1271888	1065526	38.852	19.288 #
21) L5 AR-1248-1	5.640	4.856	197119	122902	6.385	2.738 #
22) L5 AR-1248-2	5.914	5.097	164454	146629	4.119	2.383 #
23) L5 AR-1248-3	6.112	5.138	27893	48994	0.628	0.765
24) L5 AR-1248-4	6.523	5.321	914097	124312	16.596	1.649 #
25) L5 AR-1248-5	6.564	5.699	1271888	224176	23.645	3.005 #
26) L6 AR-1254-1	6.485	5.637	466475	1065526	8.705	9.183
27) L6 AR-1254-2	6.708	5.807	3595965	477950	43.175	4.750 #
28) L6 AR-1254-3	7.062	6.207	4085290	404076	46.249	2.616 #
29) L6 AR-1254-4	7.366	6.455	4936756	1089247	62.755	11.519 #
30) L6 AR-1254-5	7.723f	6.874	674627	802732	9.156	6.015 #
31) L7 AR-1260-1	7.256	6.330	4040232	1223420	68.524	12.540 #
32) L7 AR-1260-2	7.497	6.511	4864096	1422851	50.752	11.583 #
33) L7 AR-1260-3	0.000	6.698	0	67540	N.D.	0.617 #
34) L7 AR-1260-4	8.013f	7.138	5544111	462369	84.902	5.171 #
35) L7 AR-1260-5	8.370	7.394	713436	450015	4.729	2.002 #
36) L8 AR-1262-1	8.013f	6.874	5544111	802732	63.705	5.435 #
37) L8 AR-1262-2	8.391	7.138	983781	462369	4.968	3.617 #
38) L8 AR-1262-3	8.704	7.672	344387	1304877	2.739	11.444 #
39) L8 AR-1262-4	8.747f	7.708	2428416	494159	26.038	2.685 #
40) L8 AR-1262-5	9.434	8.184f	447229	180837	7.055	2.142 #
41) L9 AR-1268-1	8.704	7.672	344387	1304877	1.543	4.245 #

Data Path : Z:\pestpcbsrv\HPCHEM1\ECD_P\Data\PP070825\
 Data File : PP073553.D
 Signal(s) : Signal #1: ECD1A.ch Signal #2: ECD2B.ch
 Acq On : 07 Jul 2025 20:30
 Operator : YP\AJ
 Sample : I.BLK
 Misc :
 ALS Vial : 2 Sample Multiplier: 1

Instrument :
 ECD_P
 ClientSampleId :
 I.BLK

Integration File signal 1: autoint1.e
 Integration File signal 2: autoint2.e
 Quant Time: Jul 08 07:30:29 2025
 Quant Method : Z:\pestpcbsrv\HPCHEM1\ECD_P\methods\PP070825.M
 Quant Title : GC EXTRACTABLES
 QLast Update : Tue Jul 08 07:28:32 2025
 Response via : Initial Calibration
 Integrator: ChemStation

Volume Inj. : 2 µl
 Signal #1 Phase : ZB-MR1 Signal #2 Phase: ZB-MR2
 Signal #1 Info : 30Mx0.32mmx 0.50µ Signal #2 Info : 30M x 0.32mm x 0.25µm

	Compound	RT#1	RT#2	Resp#1	Resp#2	ng/ml	ng/ml
42)	L9 AR-1268-2	8.747f	7.708	2428416	494159	12.747	1.860 #
43)	L9 AR-1268-3	8.992	7.952	3220241	233240	19.449	1.034 #
44)	L9 AR-1268-4	9.434	8.184f	447229	180837	6.431	1.945 #
45)	L9 AR-1268-5	9.852	8.517	423092	82178	0.918	0.133 #

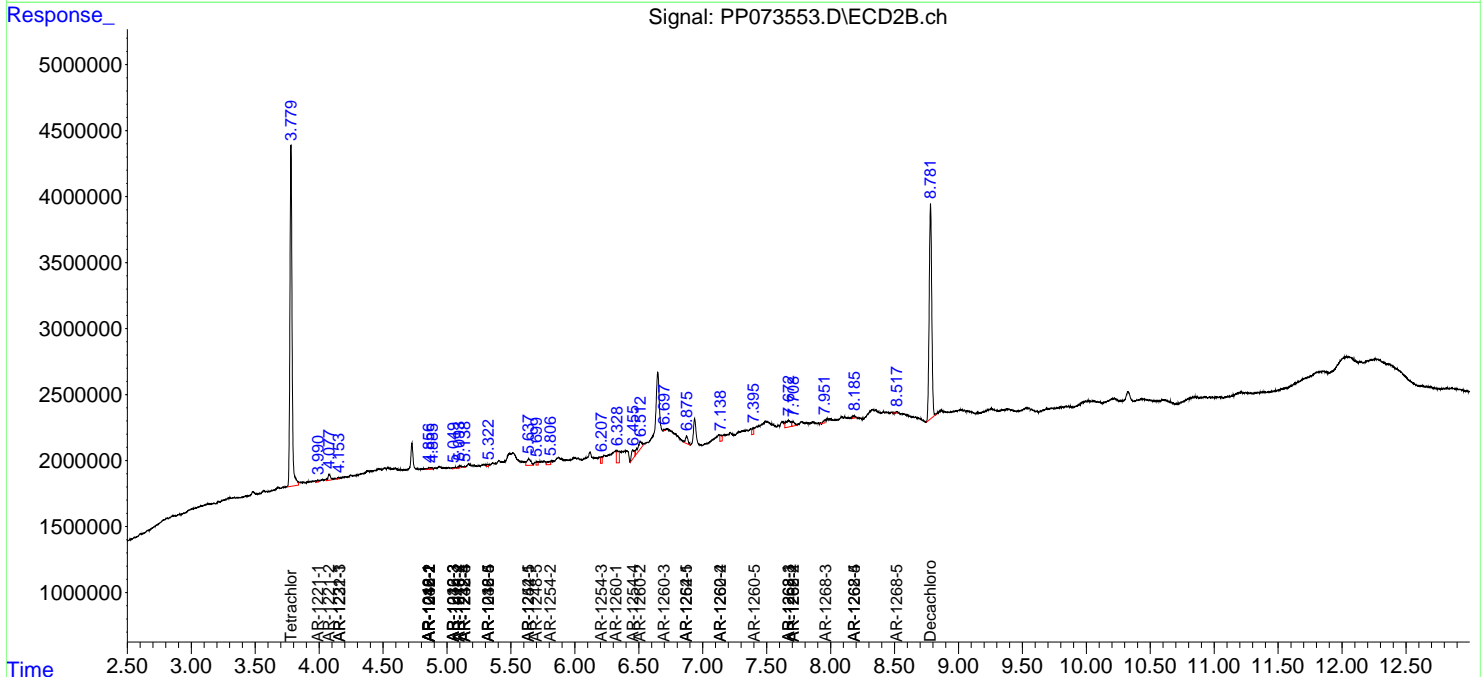
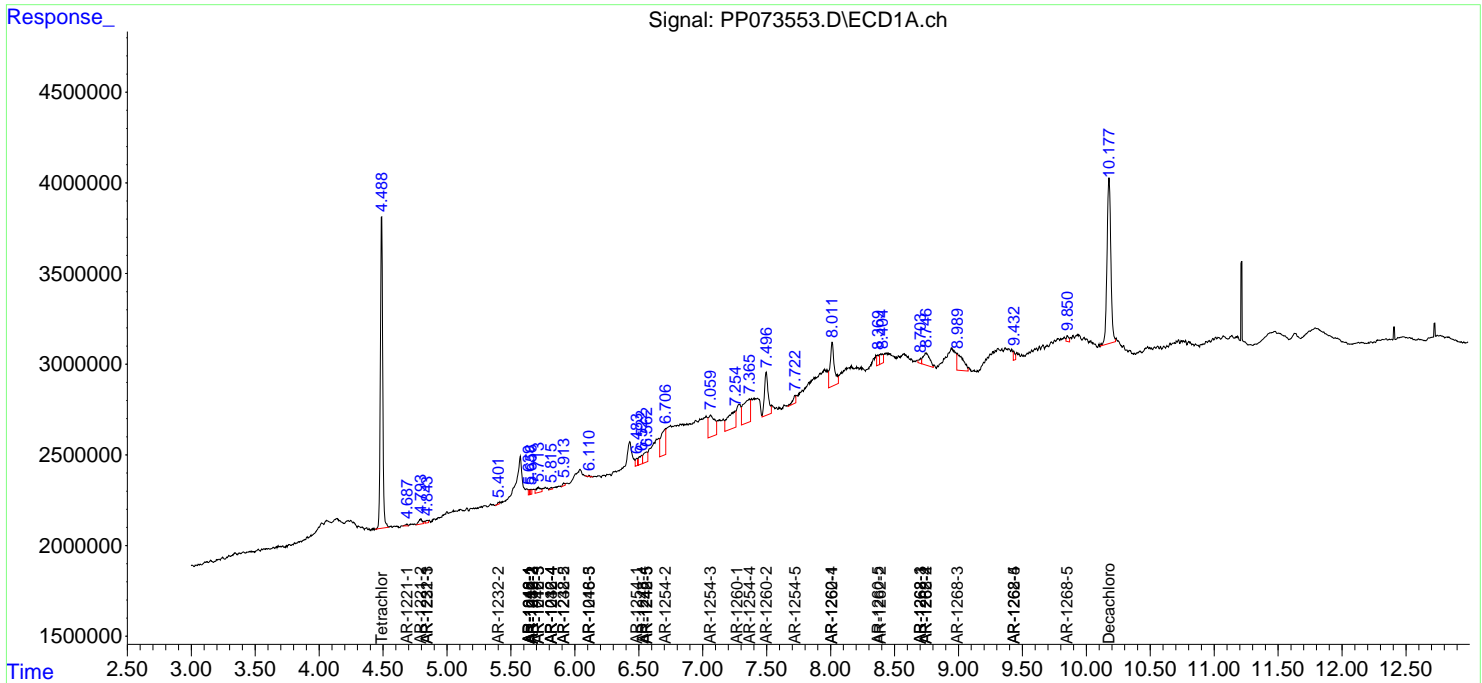
(f)=RT Delta > 1/2 Window (#)=Amounts differ by > 25% (m)=manual int.

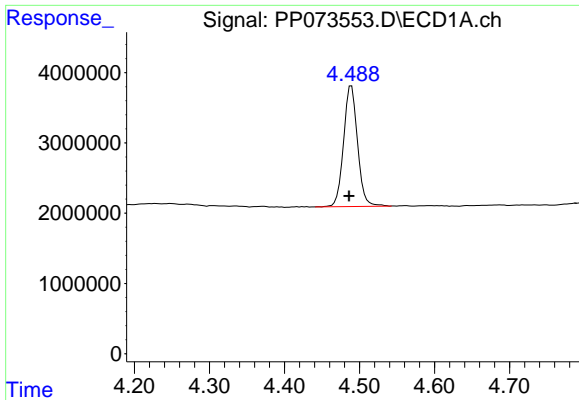
Data Path : Z:\pestpcbsrv\HPCHEM1\ECD_P\Data\PP070825\
 Data File : PP073553.D
 Signal(s) : Signal #1: ECD1A.ch Signal #2: ECD2B.ch
 Acq On : 07 Jul 2025 20:30
 Operator : YP\AJ
 Sample : I.BLK
 Misc :
 ALS Vial : 2 Sample Multiplier: 1

Instrument :
 ECD_P
 ClientSampleId :
 I.BLK

Integration File signal 1: autoint1.e
 Integration File signal 2: autoint2.e
 Quant Time: Jul 08 07:30:29 2025
 Quant Method : Z:\pestpcbsrv\HPCHEM1\ECD_P\methods\PP070825.M
 Quant Title : GC EXTRACTABLES
 QLast Update : Tue Jul 08 07:28:32 2025
 Response via : Initial Calibration
 Integrator: ChemStation

Volume Inj. : 2 µl
 Signal #1 Phase : ZB-MR1 Signal #2 Phase: ZB-MR2
 Signal #1 Info : 30Mx0.32mmx 0.50µ Signal #2 Info : 30M x 0.32mm x 0.25µm

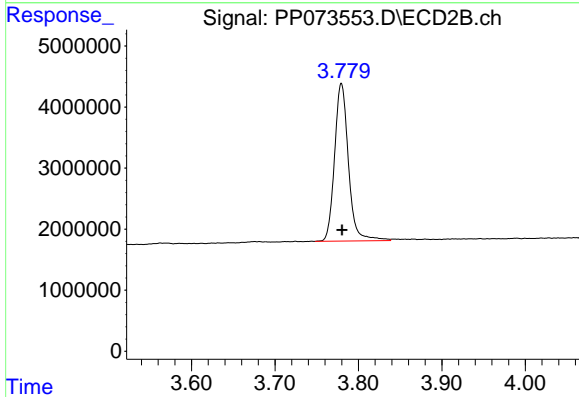




#1 Tetrachloro-m-xylene

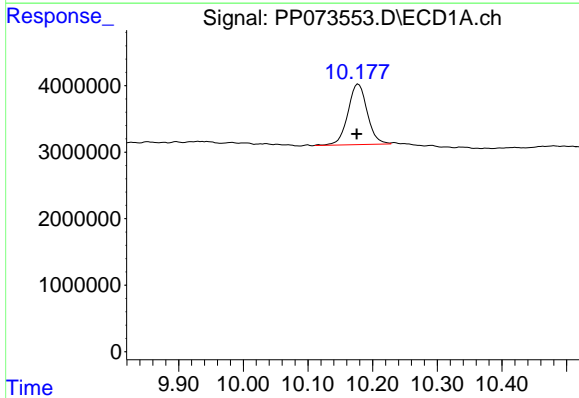
R.T.: 4.489 min
 Delta R.T.: 0.003 min
 Response: 22153163
 Conc: 16.18 ng/ml

Instrument :
 ECD_P
 ClientSampleId :
 I.BLK



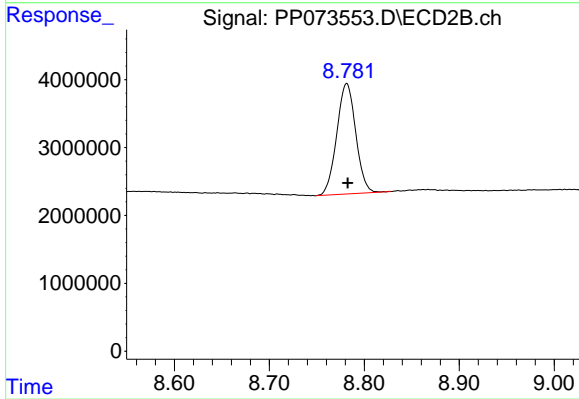
#1 Tetrachloro-m-xylene

R.T.: 3.780 min
 Delta R.T.: 0.000 min
 Response: 29828480
 Conc: 16.19 ng/ml



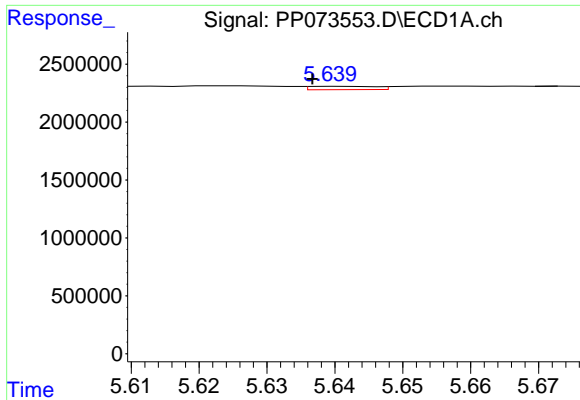
#2 Decachlorobiphenyl

R.T.: 10.178 min
 Delta R.T.: 0.003 min
 Response: 18922819
 Conc: 17.34 ng/ml



#2 Decachlorobiphenyl

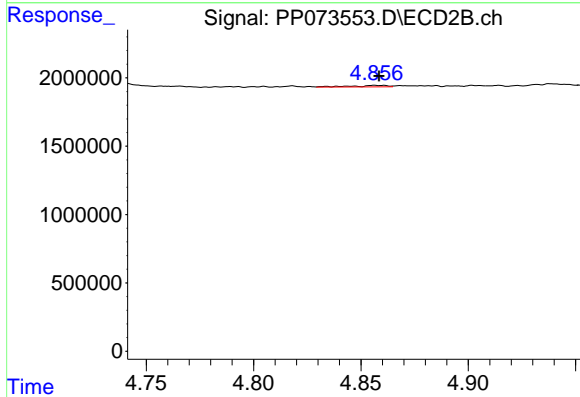
R.T.: 8.781 min
 Delta R.T.: 0.000 min
 Response: 22582394
 Conc: 17.07 ng/ml



#3 AR-1016-1

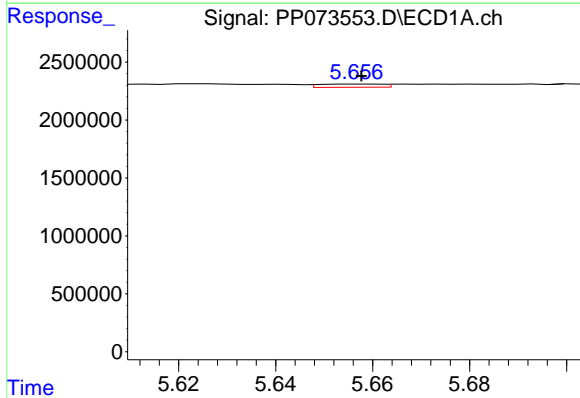
R.T.: 5.640 min
 Delta R.T.: 0.003 min
 Response: 197119
 Conc: 4.15 ng/ml

Instrument :
 ECD_P
 ClientSampleId :
 I.BLK



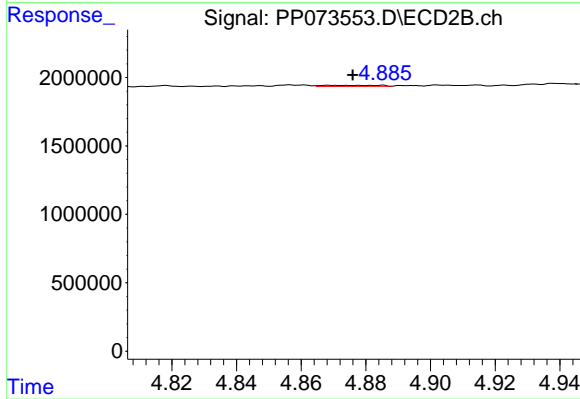
#3 AR-1016-1

R.T.: 4.856 min
 Delta R.T.: -0.002 min
 Response: 122902
 Conc: 1.80 ng/ml



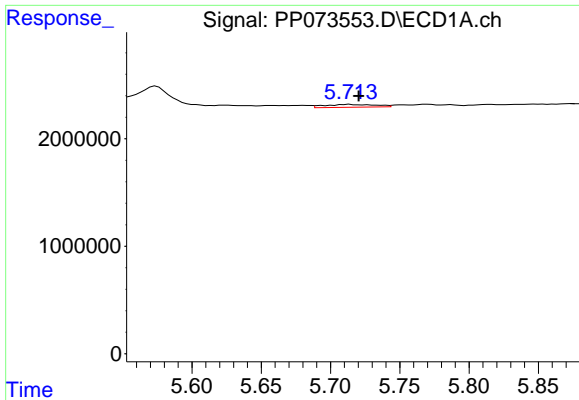
#4 AR-1016-2

R.T.: 5.658 min
 Delta R.T.: 0.000 min
 Response: 254649
 Conc: 3.58 ng/ml



#4 AR-1016-2

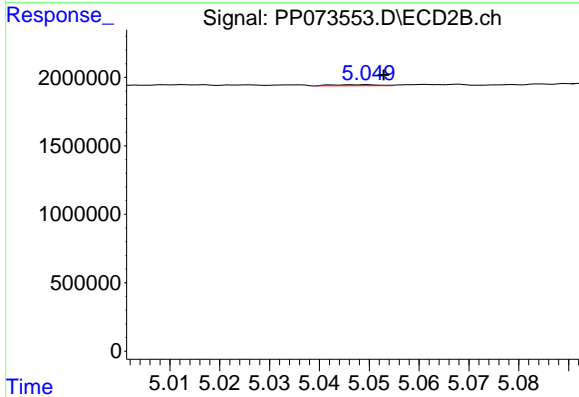
R.T.: 4.869 min
 Delta R.T.: -0.007 min
 Response: 88537
 Conc: 0.87 ng/ml



#5 AR-1016-3

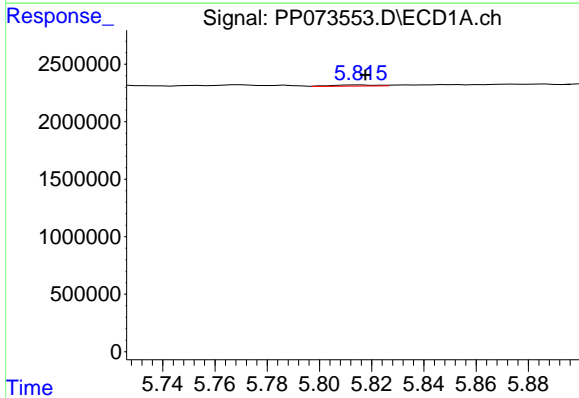
R.T.: 5.714 min
 Delta R.T.: -0.007 min
 Response: 687397
 Conc: 15.74 ng/ml

Instrument :
 ECD_P
 ClientSampleId :
 I.BLK



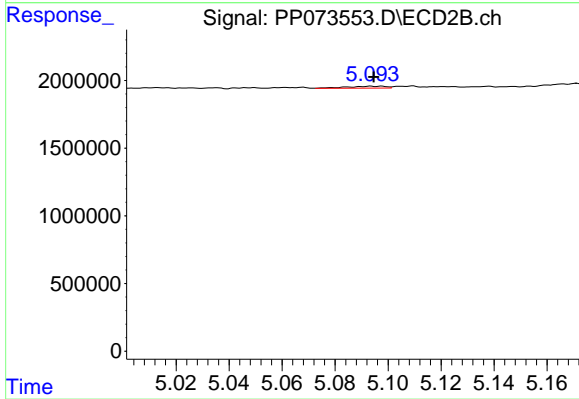
#5 AR-1016-3

R.T.: 5.049 min
 Delta R.T.: -0.004 min
 Response: 52774
 Conc: 0.98 ng/ml



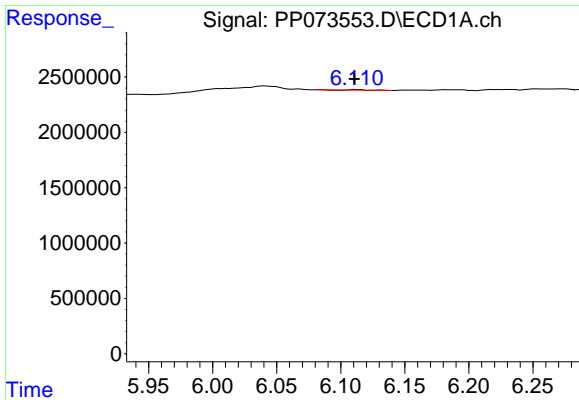
#6 AR-1016-4

R.T.: 5.815 min
 Delta R.T.: -0.002 min
 Response: 116062
 Conc: 3.23 ng/ml



#6 AR-1016-4

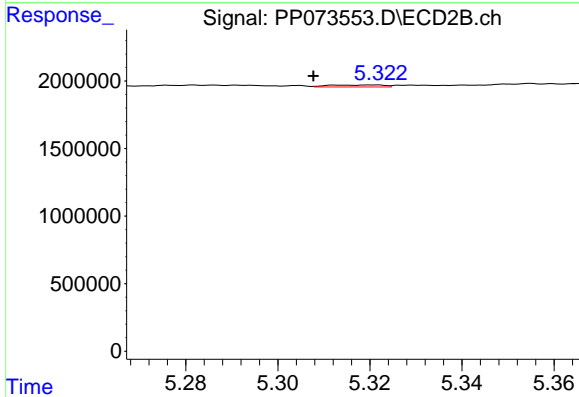
R.T.: 5.097 min
 Delta R.T.: 0.003 min
 Response: 146629
 Conc: 3.34 ng/ml



#7 AR-1016-5

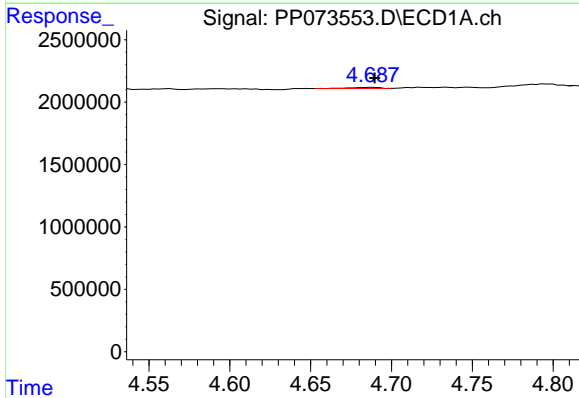
R.T.: 6.112 min
 Delta R.T.: 0.001 min
 Response: 27893
 Conc: 0.89 ng/ml

Instrument :
 ECD_P
 ClientSampleId :
 I.BLK



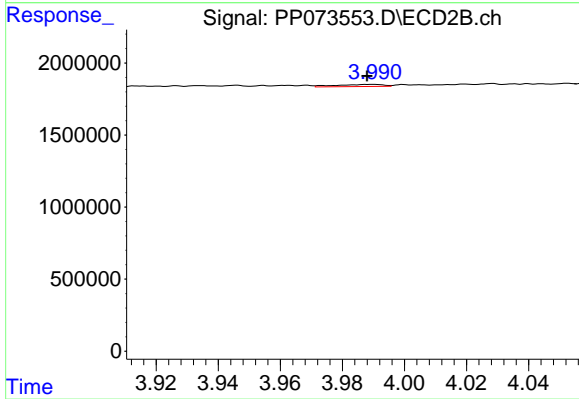
#7 AR-1016-5

R.T.: 5.321 min
 Delta R.T.: 0.013 min
 Response: 124312
 Conc: 2.28 ng/ml



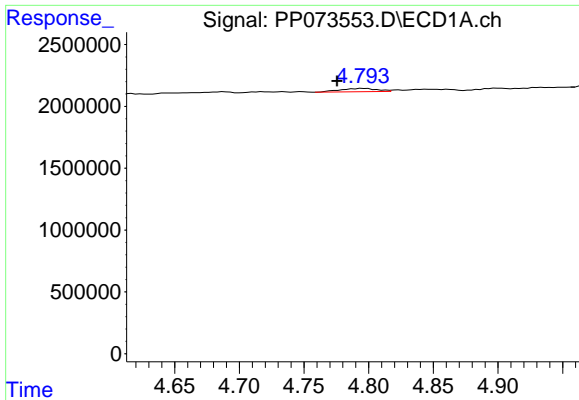
#8 AR-1221-1

R.T.: 4.689 min
 Delta R.T.: -0.001 min
 Response: 116820
 Conc: 6.54 ng/ml



#8 AR-1221-1

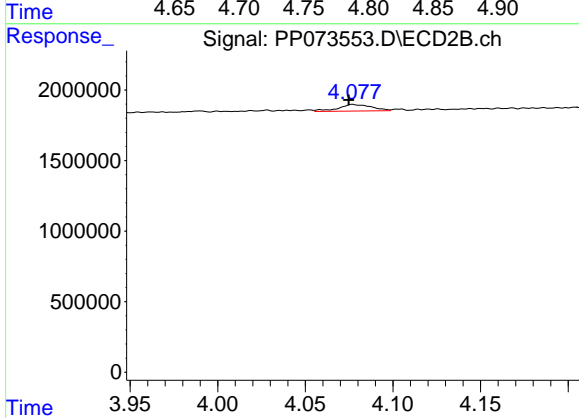
R.T.: 3.990 min
 Delta R.T.: 0.002 min
 Response: 153585
 Conc: 5.68 ng/ml



#9 AR-1221-2

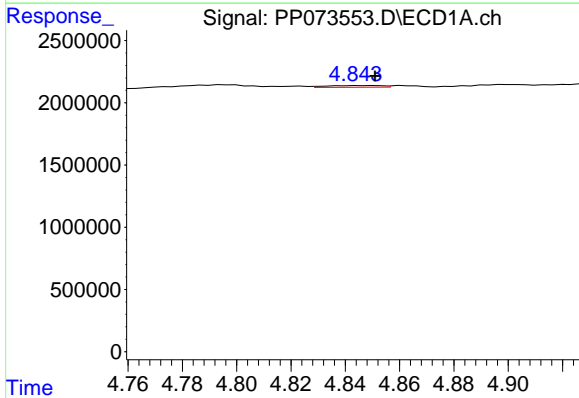
R.T.: 4.795 min
 Delta R.T.: 0.020 min
 Response: 520045
 Conc: 38.51 ng/ml

Instrument :
 ECD_P
 ClientSampleId :
 I.BLK



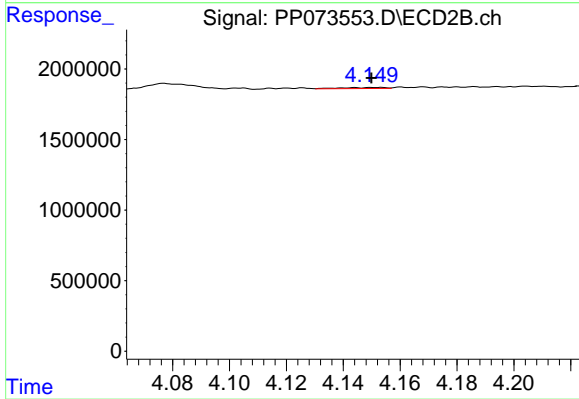
#9 AR-1221-2

R.T.: 4.077 min
 Delta R.T.: 0.002 min
 Response: 622329
 Conc: 30.57 ng/ml



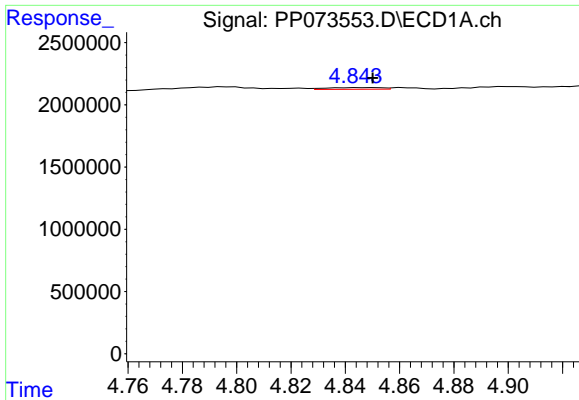
#10 AR-1221-3

R.T.: 4.846 min
 Delta R.T.: -0.005 min
 Response: 196439
 Conc: 4.72 ng/ml



#10 AR-1221-3

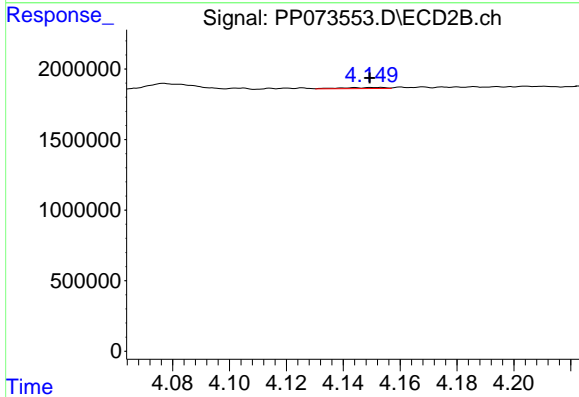
R.T.: 4.154 min
 Delta R.T.: 0.004 min
 Response: 79178
 Conc: 1.29 ng/ml



#11 AR-1232-1

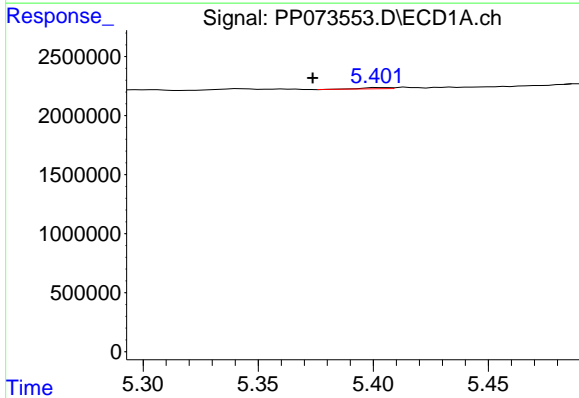
R.T.: 4.846 min
 Delta R.T.: -0.004 min
 Response: 196439
 Conc: 6.02 ng/ml

Instrument :
 ECD_P
 ClientSampleId :
 I.BLK



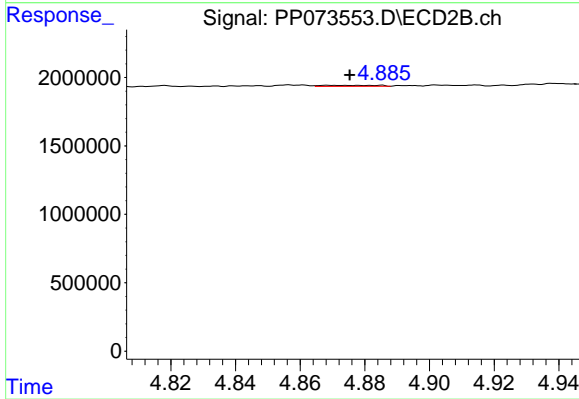
#11 AR-1232-1

R.T.: 4.154 min
 Delta R.T.: 0.004 min
 Response: 79178
 Conc: 1.70 ng/ml



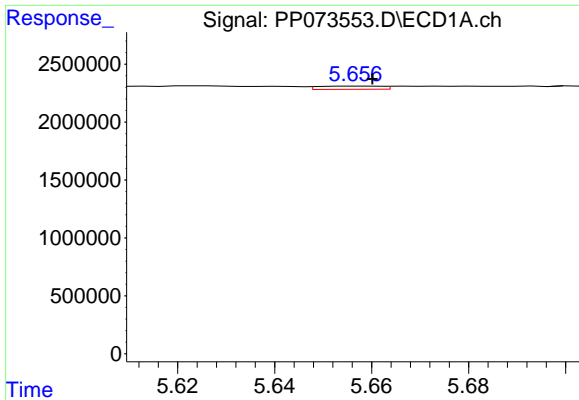
#12 AR-1232-2

R.T.: 5.402 min
 Delta R.T.: 0.029 min
 Response: 76261
 Conc: 4.69 ng/ml



#12 AR-1232-2

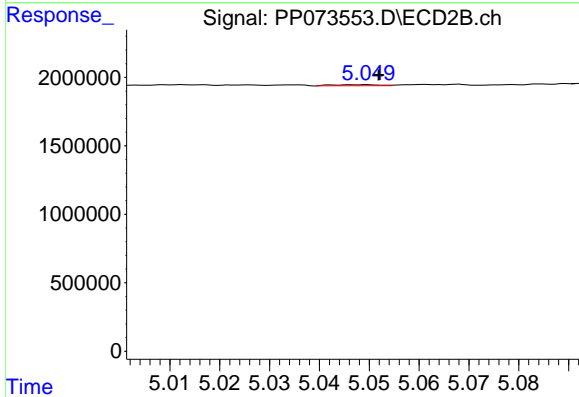
R.T.: 4.869 min
 Delta R.T.: -0.007 min
 Response: 88537
 Conc: 1.86 ng/ml



#13 AR-1232-3

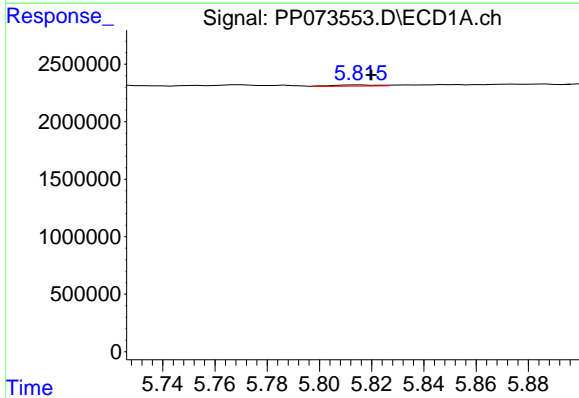
R.T.: 5.658 min
 Delta R.T.: -0.002 min
 Response: 254649
 Conc: 7.72 ng/ml

Instrument :
 ECD_P
 ClientSampleId :
 I.BLK



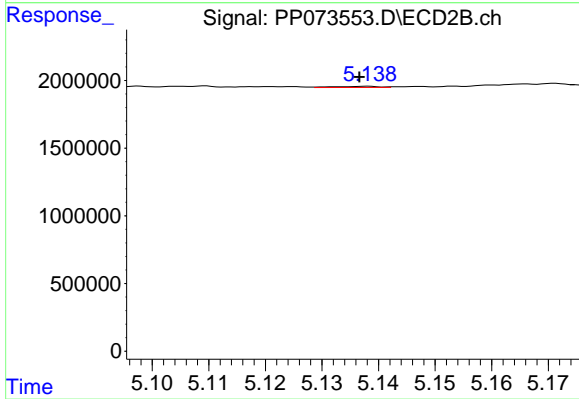
#13 AR-1232-3

R.T.: 5.049 min
 Delta R.T.: -0.003 min
 Response: 52774
 Conc: 2.11 ng/ml



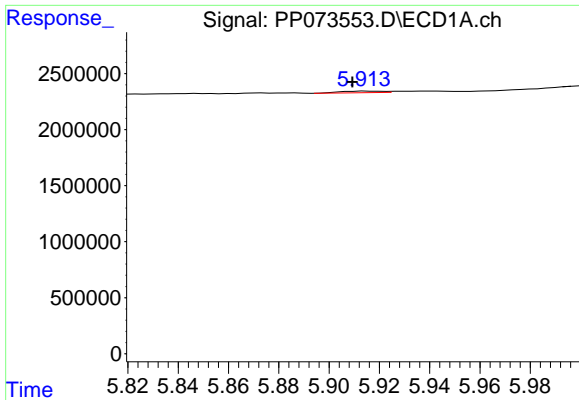
#14 AR-1232-4

R.T.: 5.815 min
 Delta R.T.: -0.004 min
 Response: 116062
 Conc: 7.06 ng/ml



#14 AR-1232-4

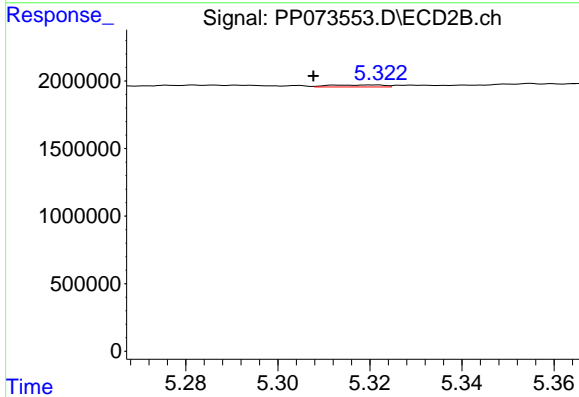
R.T.: 5.138 min
 Delta R.T.: 0.001 min
 Response: 48994
 Conc: 2.26 ng/ml



#15 AR-1232-5

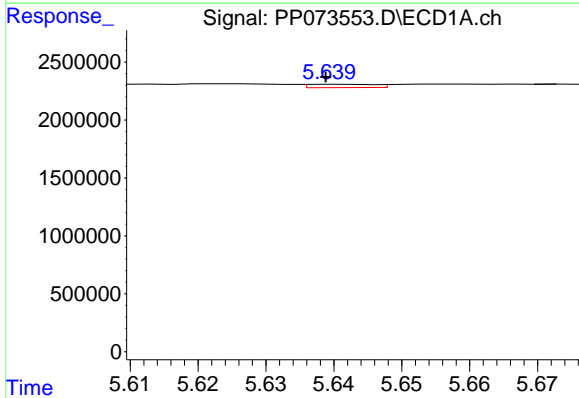
R.T.: 5.914 min
 Delta R.T.: 0.005 min
 Response: 164454
 Conc: 15.56 ng/ml

Instrument :
 ECD_P
 ClientSampleId :
 I.BLK



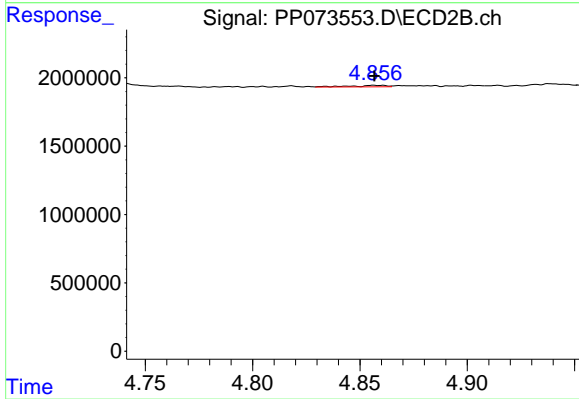
#15 AR-1232-5

R.T.: 5.321 min
 Delta R.T.: 0.013 min
 Response: 124312
 Conc: 5.51 ng/ml



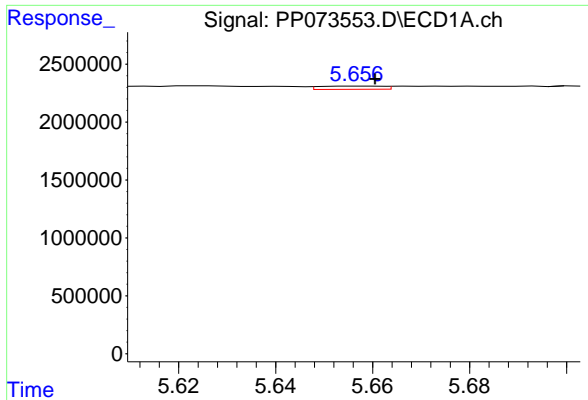
#16 AR-1242-1

R.T.: 5.640 min
 Delta R.T.: 0.001 min
 Response: 197119
 Conc: 5.16 ng/ml



#16 AR-1242-1

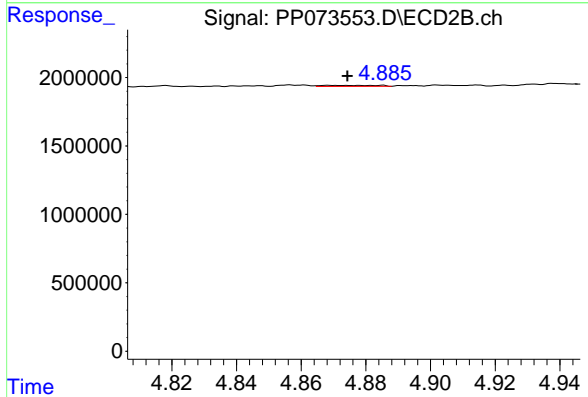
R.T.: 4.856 min
 Delta R.T.: 0.000 min
 Response: 122902
 Conc: 2.13 ng/ml



#17 AR-1242-2

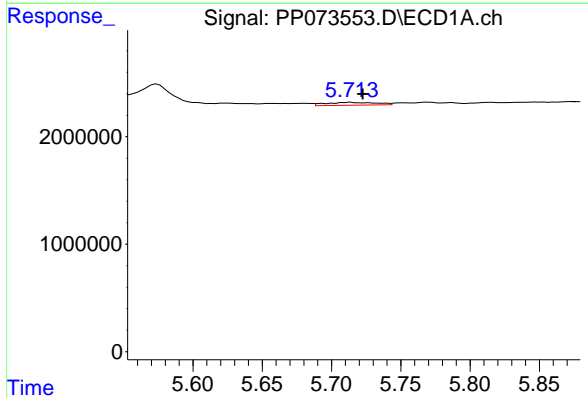
R.T.: 5.658 min
 Delta R.T.: -0.002 min
 Response: 254649
 Conc: 4.25 ng/ml

Instrument :
 ECD_P
 ClientSampleId :
 I.BLK



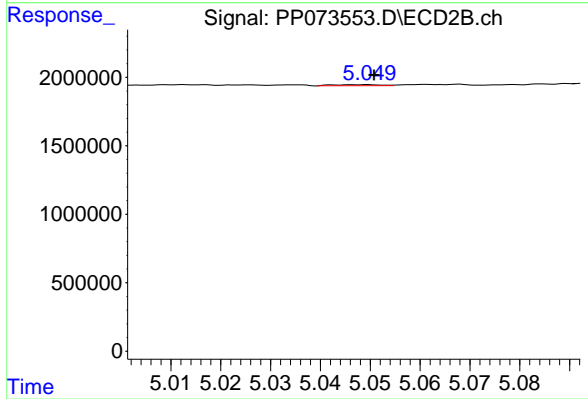
#17 AR-1242-2

R.T.: 4.869 min
 Delta R.T.: -0.005 min
 Response: 88537
 Conc: 1.02 ng/ml



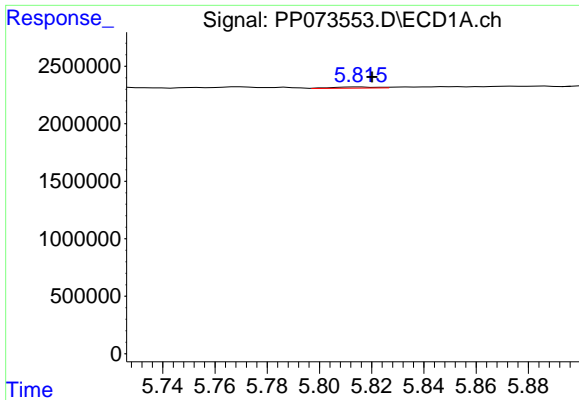
#18 AR-1242-3

R.T.: 5.714 min
 Delta R.T.: -0.009 min
 Response: 687397
 Conc: 18.77 ng/ml



#18 AR-1242-3

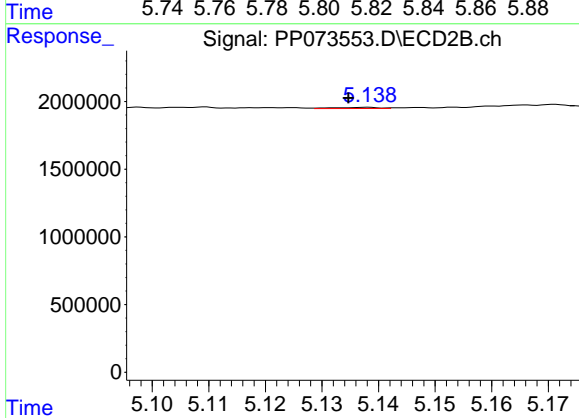
R.T.: 5.049 min
 Delta R.T.: -0.002 min
 Response: 52774
 Conc: 1.15 ng/ml



#19 AR-1242-4

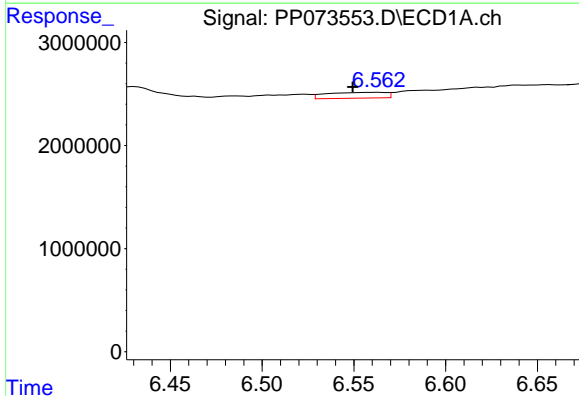
R.T.: 5.815 min
 Delta R.T.: -0.005 min
 Response: 116062
 Conc: 3.61 ng/ml

Instrument :
 ECD_P
 ClientSampleId :
 I.BLK



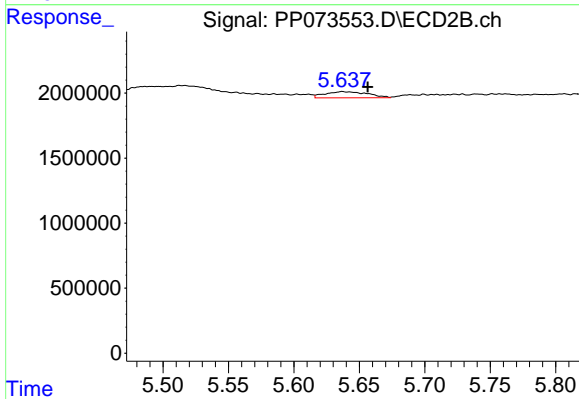
#19 AR-1242-4

R.T.: 5.138 min
 Delta R.T.: 0.003 min
 Response: 48994
 Conc: 1.11 ng/ml



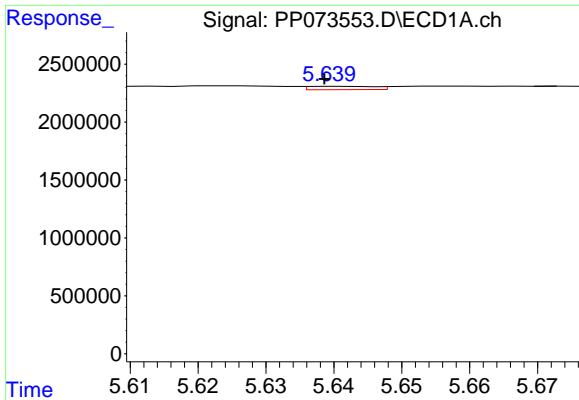
#20 AR-1242-5

R.T.: 6.564 min
 Delta R.T.: 0.014 min
 Response: 1271888
 Conc: 38.85 ng/ml



#20 AR-1242-5

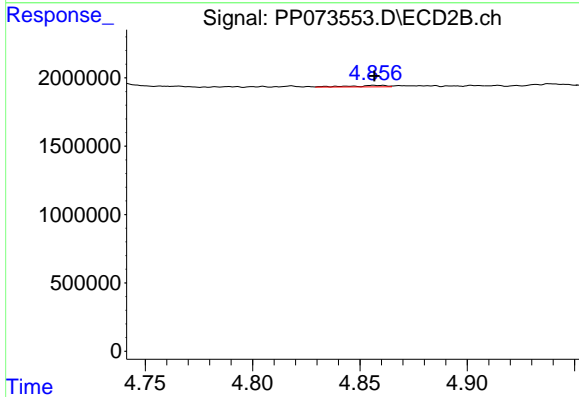
R.T.: 5.637 min
 Delta R.T.: -0.019 min
 Response: 1065526
 Conc: 19.29 ng/ml



#21 AR-1248-1

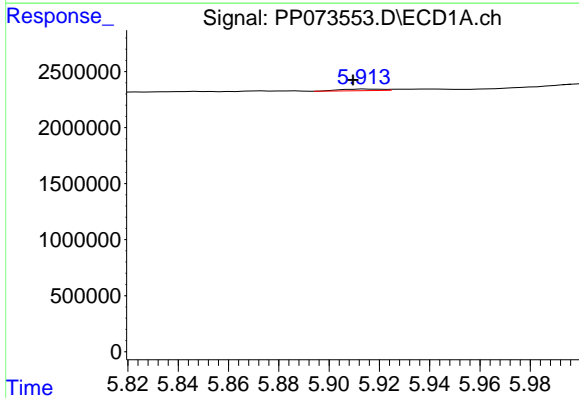
R.T.: 5.640 min
 Delta R.T.: 0.001 min
 Response: 197119
 Conc: 6.39 ng/ml

Instrument :
 ECD_P
 ClientSampleId :
 I.BLK



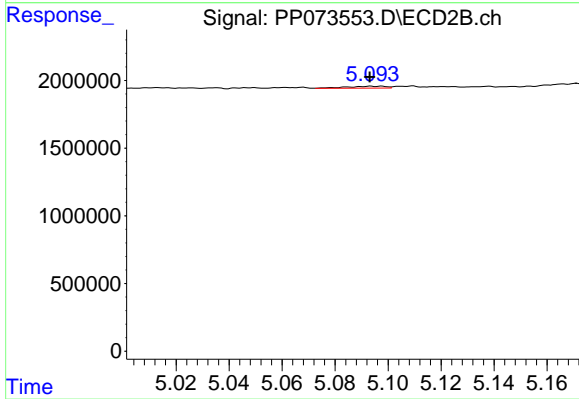
#21 AR-1248-1

R.T.: 4.856 min
 Delta R.T.: 0.000 min
 Response: 122902
 Conc: 2.74 ng/ml



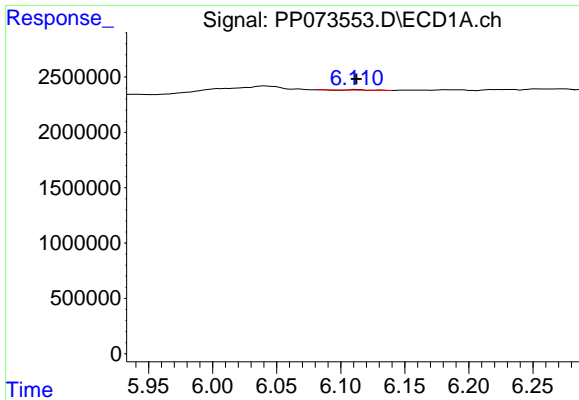
#22 AR-1248-2

R.T.: 5.914 min
 Delta R.T.: 0.005 min
 Response: 164454
 Conc: 4.12 ng/ml



#22 AR-1248-2

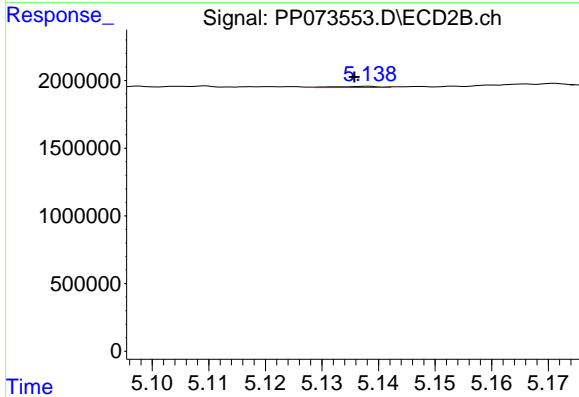
R.T.: 5.097 min
 Delta R.T.: 0.004 min
 Response: 146629
 Conc: 2.38 ng/ml



#23 AR-1248-3

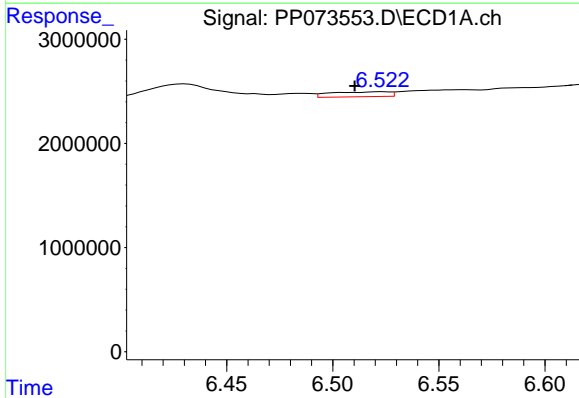
R.T.: 6.112 min
 Delta R.T.: 0.000 min
 Response: 27893
 Conc: 0.63 ng/ml

Instrument :
 ECD_P
 ClientSampleId :
 I.BLK



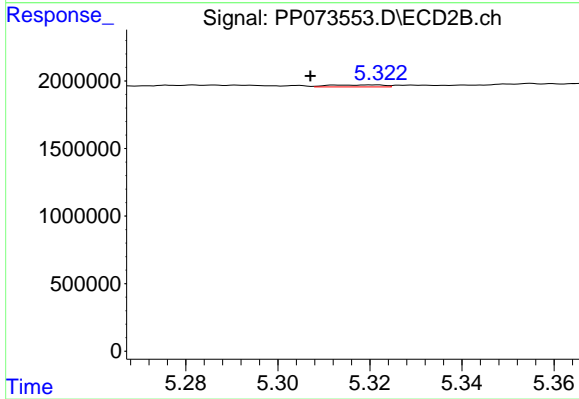
#23 AR-1248-3

R.T.: 5.138 min
 Delta R.T.: 0.002 min
 Response: 48994
 Conc: 0.76 ng/ml



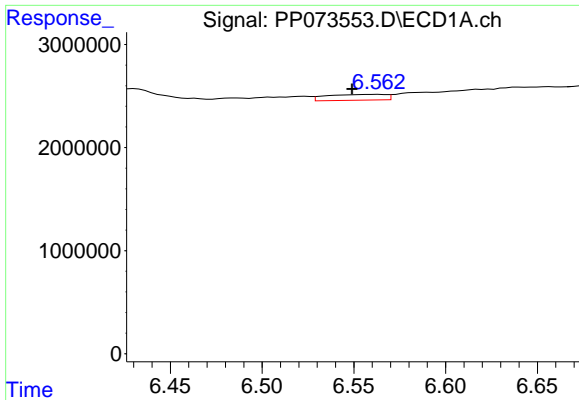
#24 AR-1248-4

R.T.: 6.523 min
 Delta R.T.: 0.013 min
 Response: 914097
 Conc: 16.60 ng/ml



#24 AR-1248-4

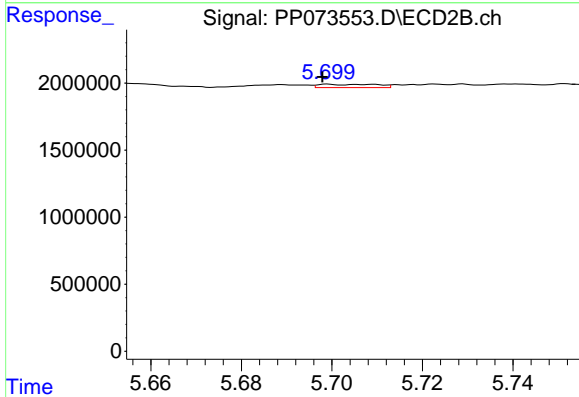
R.T.: 5.321 min
 Delta R.T.: 0.013 min
 Response: 124312
 Conc: 1.65 ng/ml



#25 AR-1248-5

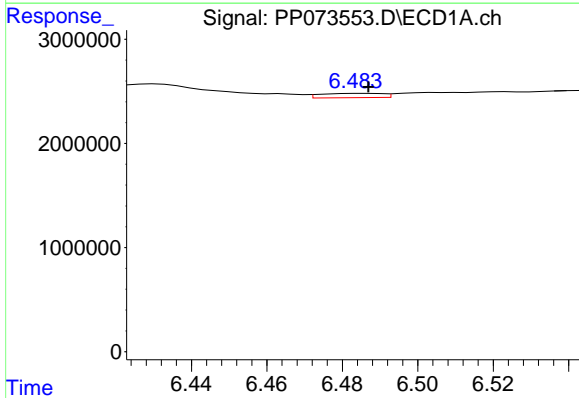
R.T.: 6.564 min
 Delta R.T.: 0.014 min
 Response: 1271888
 Conc: 23.65 ng/ml

Instrument :
 ECD_P
 ClientSampleId :
 I.BLK



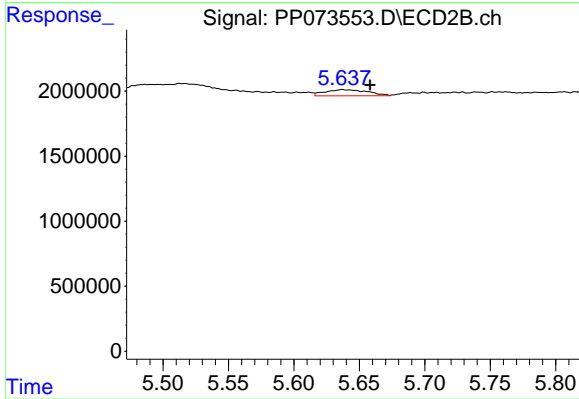
#25 AR-1248-5

R.T.: 5.699 min
 Delta R.T.: 0.001 min
 Response: 224176
 Conc: 3.01 ng/ml



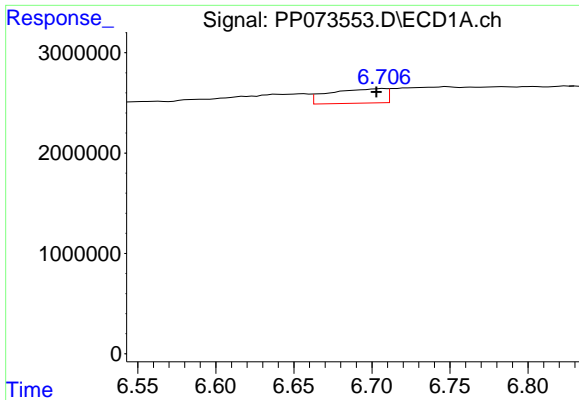
#26 AR-1254-1

R.T.: 6.485 min
 Delta R.T.: -0.002 min
 Response: 466475
 Conc: 8.70 ng/ml



#26 AR-1254-1

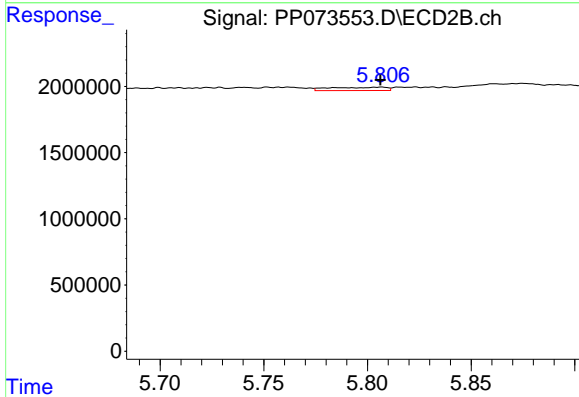
R.T.: 5.637 min
 Delta R.T.: -0.021 min
 Response: 1065526
 Conc: 9.18 ng/ml



#27 AR-1254-2

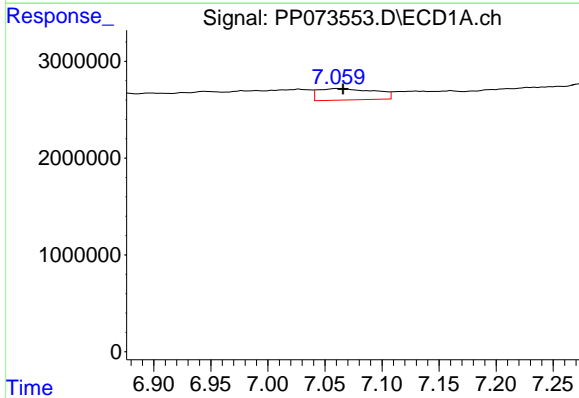
R.T.: 6.708 min
 Delta R.T.: 0.005 min
 Response: 3595965
 Conc: 43.17 ng/ml

Instrument :
 ECD_P
 ClientSampleId :
 I.BLK



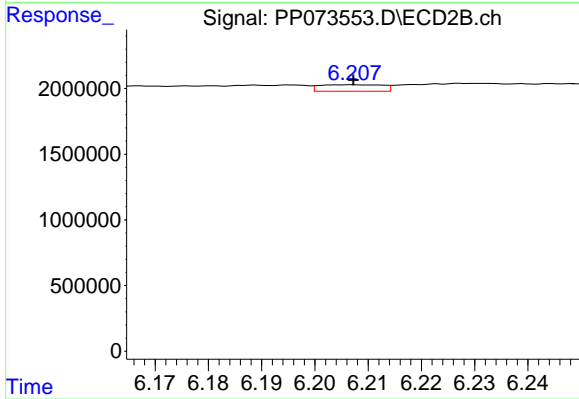
#27 AR-1254-2

R.T.: 5.807 min
 Delta R.T.: 0.000 min
 Response: 477950
 Conc: 4.75 ng/ml



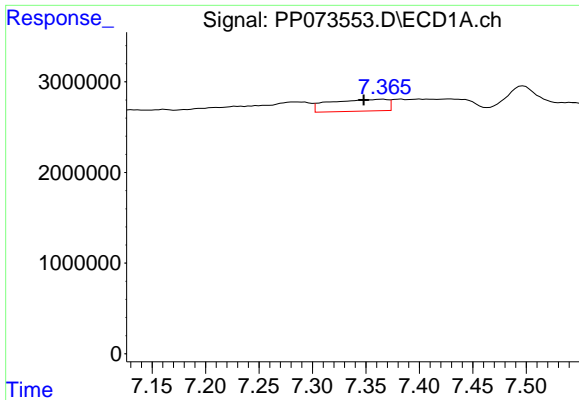
#28 AR-1254-3

R.T.: 7.062 min
 Delta R.T.: -0.004 min
 Response: 4085290
 Conc: 46.25 ng/ml



#28 AR-1254-3

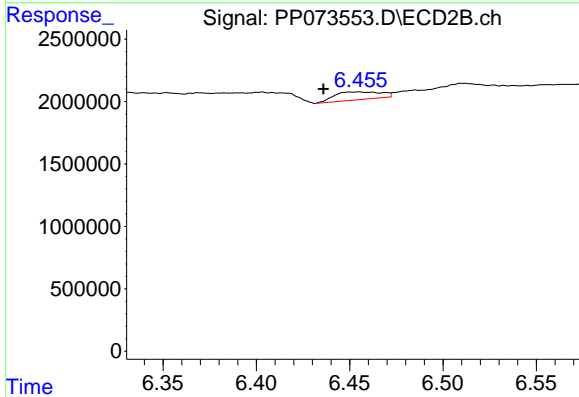
R.T.: 6.207 min
 Delta R.T.: 0.000 min
 Response: 404076
 Conc: 2.62 ng/ml



#29 AR-1254-4

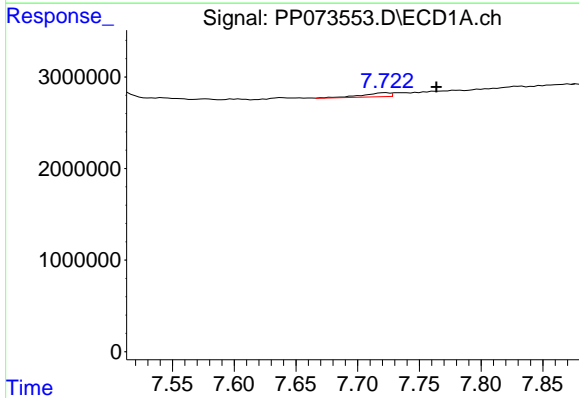
R.T.: 7.366 min
 Delta R.T.: 0.018 min
 Response: 4936756
 Conc: 62.76 ng/ml

Instrument :
 ECD_P
 ClientSampleId :
 I.BLK



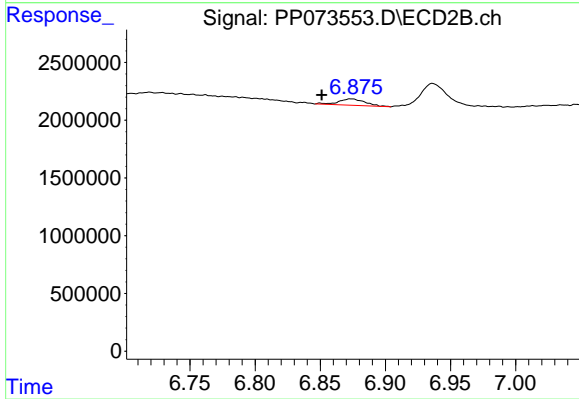
#29 AR-1254-4

R.T.: 6.455 min
 Delta R.T.: 0.019 min
 Response: 1089247
 Conc: 11.52 ng/ml



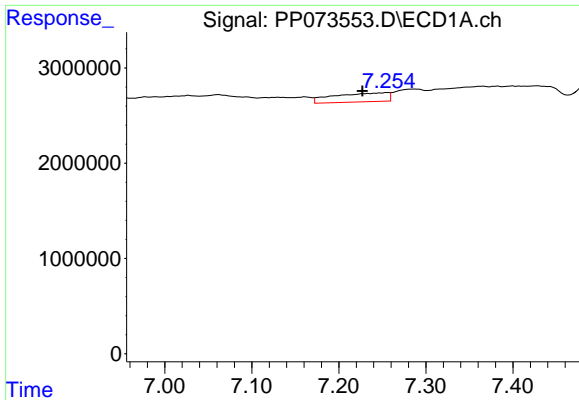
#30 AR-1254-5

R.T.: 7.723 min
 Delta R.T.: -0.041 min
 Response: 674627
 Conc: 9.16 ng/ml



#30 AR-1254-5

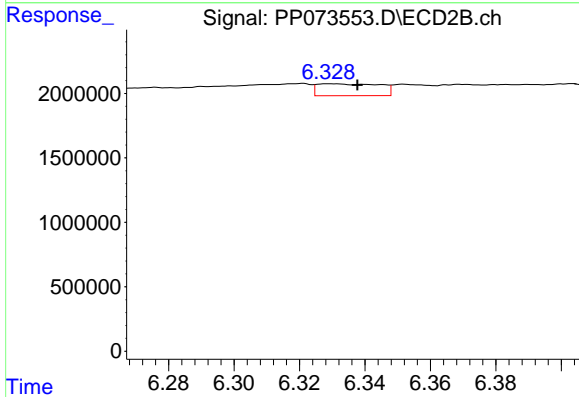
R.T.: 6.874 min
 Delta R.T.: 0.023 min
 Response: 802732
 Conc: 6.02 ng/ml



#31 AR-1260-1

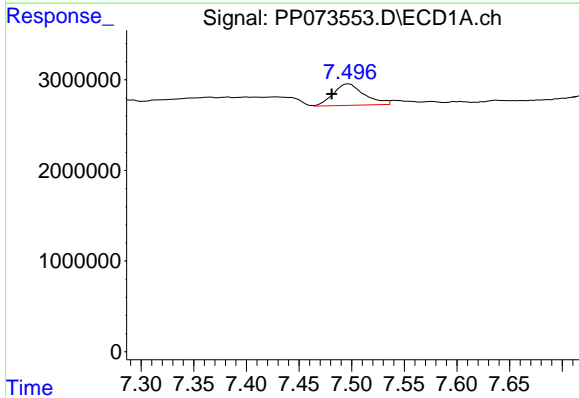
R.T.: 7.256 min
 Delta R.T.: 0.029 min
 Response: 4040232
 Conc: 68.52 ng/ml

Instrument :
 ECD_P
 ClientSampleId :
 I.BLK



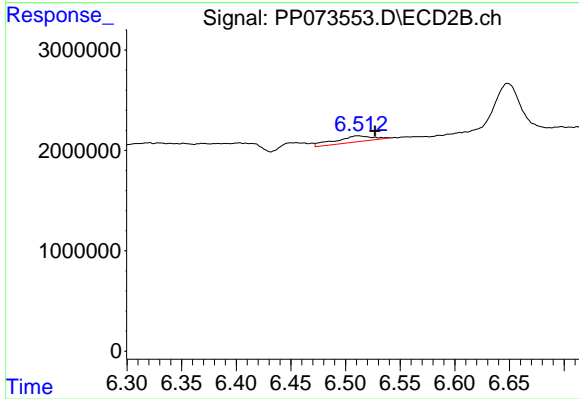
#31 AR-1260-1

R.T.: 6.330 min
 Delta R.T.: -0.008 min
 Response: 1223420
 Conc: 12.54 ng/ml



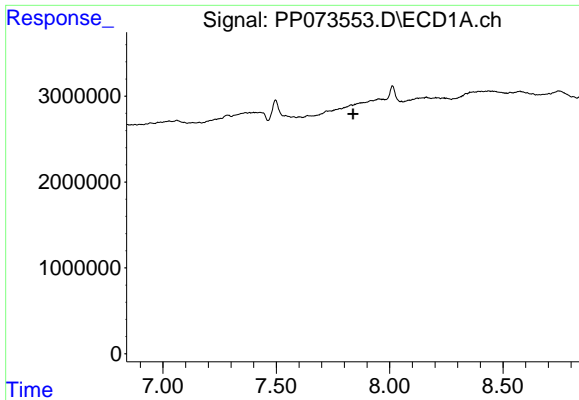
#32 AR-1260-2

R.T.: 7.497 min
 Delta R.T.: 0.016 min
 Response: 4864096
 Conc: 50.75 ng/ml



#32 AR-1260-2

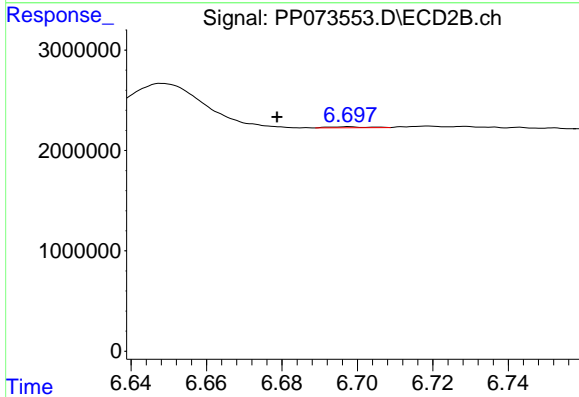
R.T.: 6.511 min
 Delta R.T.: -0.016 min
 Response: 1422851
 Conc: 11.58 ng/ml



#33 AR-1260-3

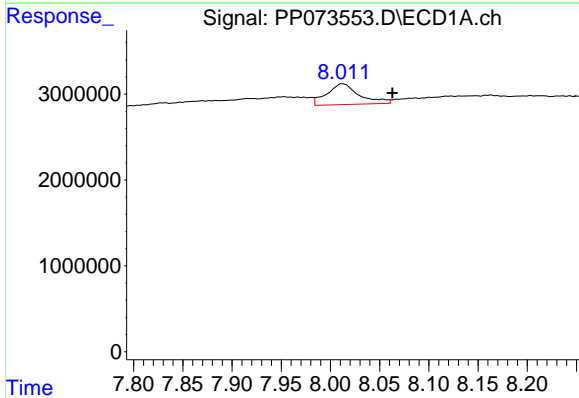
R.T.: 0.000 min
 Exp R.T.: 7.838 min
 Response: 0
 Conc: N.D.

Instrument :
 ECD_P
 ClientSampleId :
 I.BLK



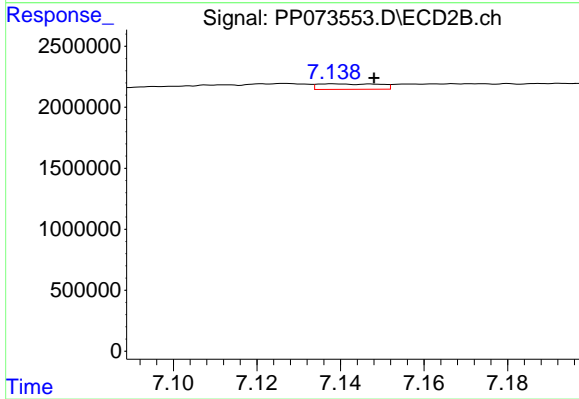
#33 AR-1260-3

R.T.: 6.698 min
 Delta R.T.: 0.019 min
 Response: 67540
 Conc: 0.62 ng/ml



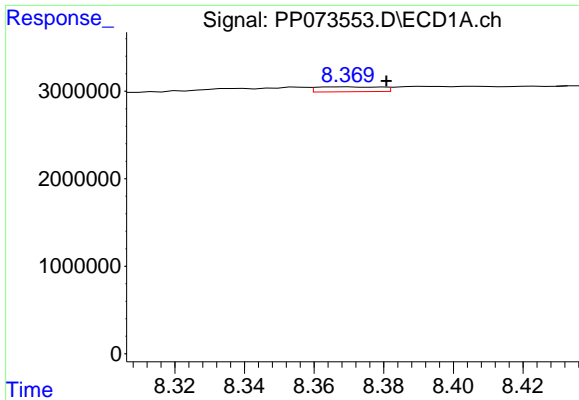
#34 AR-1260-4

R.T.: 8.013 min
 Delta R.T.: -0.050 min
 Response: 5544111
 Conc: 84.90 ng/ml



#34 AR-1260-4

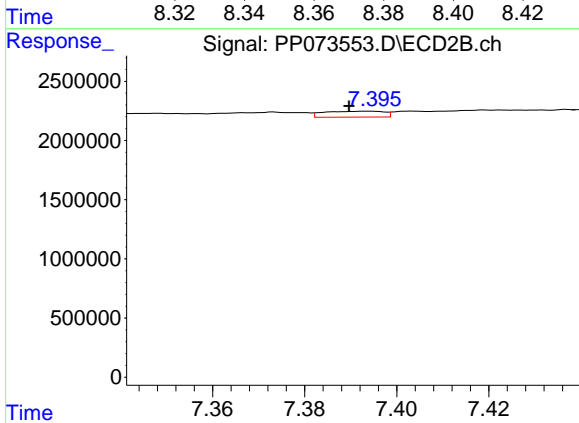
R.T.: 7.138 min
 Delta R.T.: -0.010 min
 Response: 462369
 Conc: 5.17 ng/ml



#35 AR-1260-5

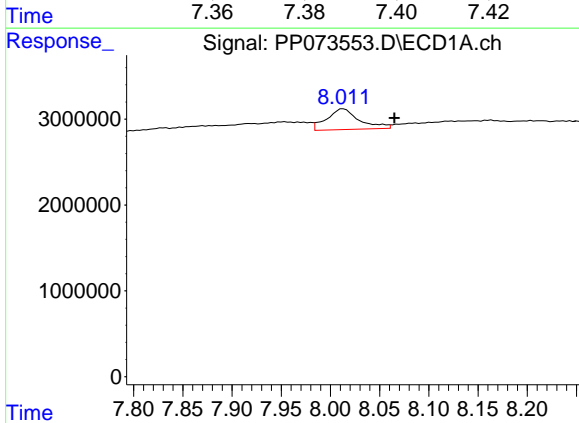
R.T.: 8.370 min
 Delta R.T.: -0.010 min
 Response: 713436
 Conc: 4.73 ng/ml

Instrument :
 ECD_P
 ClientSampleId :
 I.BLK



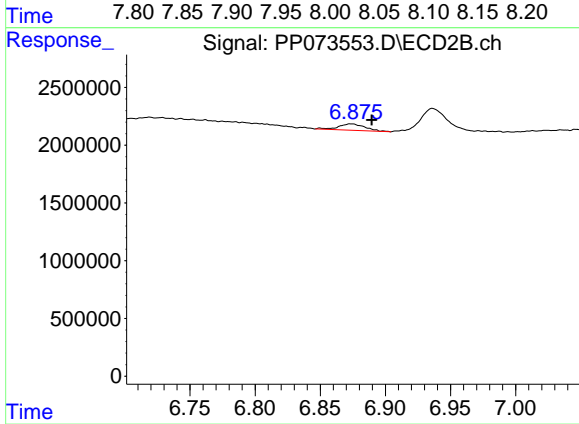
#35 AR-1260-5

R.T.: 7.394 min
 Delta R.T.: 0.004 min
 Response: 450015
 Conc: 2.00 ng/ml



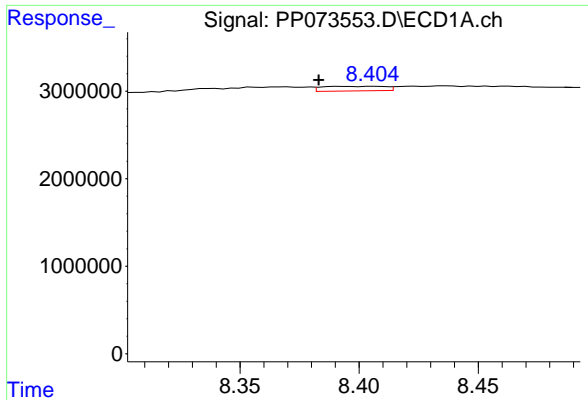
#36 AR-1262-1

R.T.: 8.013 min
 Delta R.T.: -0.052 min
 Response: 5544111
 Conc: 63.71 ng/ml



#36 AR-1262-1

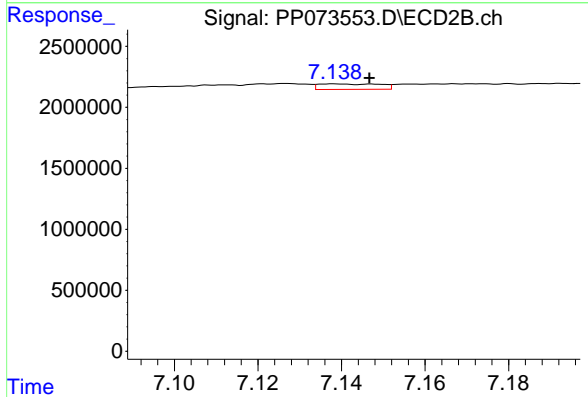
R.T.: 6.874 min
 Delta R.T.: -0.015 min
 Response: 802732
 Conc: 5.44 ng/ml



#37 AR-1262-2

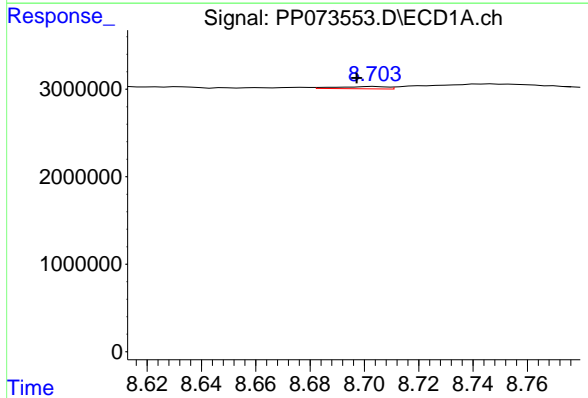
R.T.: 8.391 min
 Delta R.T.: 0.008 min
 Response: 983781
 Conc: 4.97 ng/ml

Instrument :
 ECD_P
 ClientSampleId :
 I.BLK



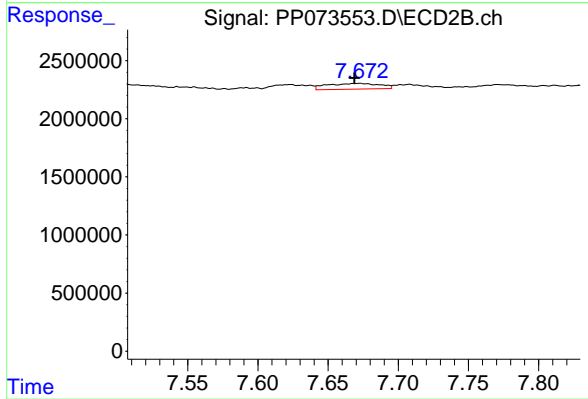
#37 AR-1262-2

R.T.: 7.138 min
 Delta R.T.: -0.009 min
 Response: 462369
 Conc: 3.62 ng/ml



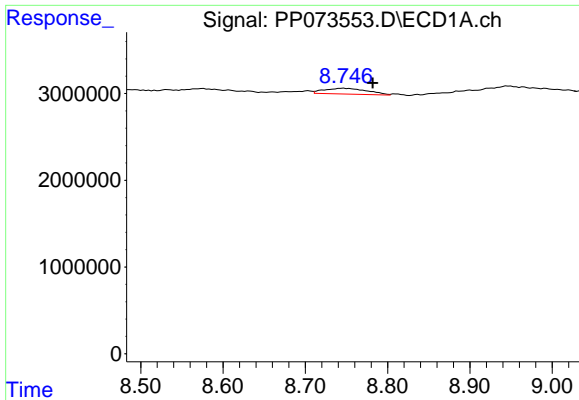
#38 AR-1262-3

R.T.: 8.704 min
 Delta R.T.: 0.007 min
 Response: 344387
 Conc: 2.74 ng/ml



#38 AR-1262-3

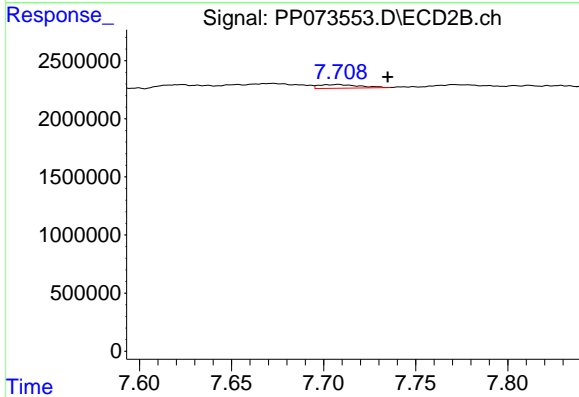
R.T.: 7.672 min
 Delta R.T.: 0.003 min
 Response: 1304877
 Conc: 11.44 ng/ml



#39 AR-1262-4

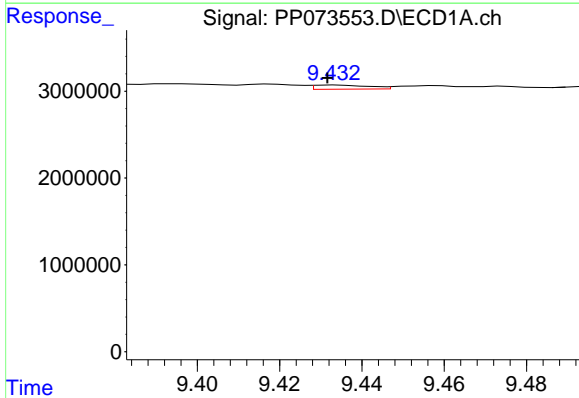
R.T.: 8.747 min
 Delta R.T.: -0.035 min
 Response: 2428416
 Conc: 26.04 ng/ml

Instrument :
 ECD_P
 ClientSampleId :
 I.BLK



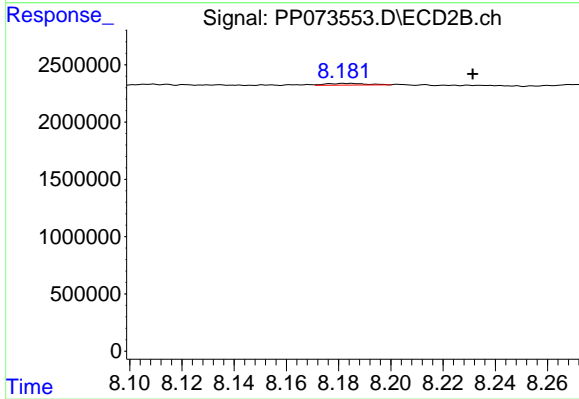
#39 AR-1262-4

R.T.: 7.708 min
 Delta R.T.: -0.027 min
 Response: 494159
 Conc: 2.68 ng/ml



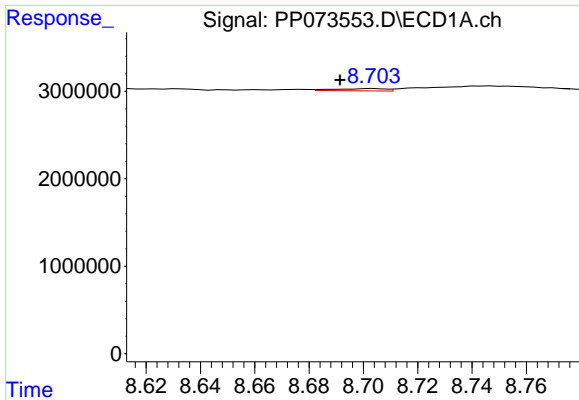
#40 AR-1262-5

R.T.: 9.434 min
 Delta R.T.: 0.002 min
 Response: 447229
 Conc: 7.06 ng/ml



#40 AR-1262-5

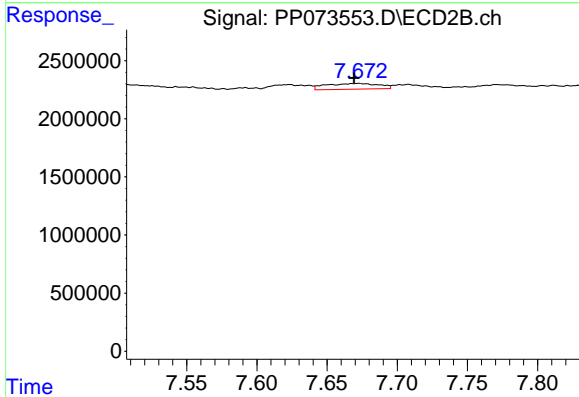
R.T.: 8.184 min
 Delta R.T.: -0.048 min
 Response: 180837
 Conc: 2.14 ng/ml



#41 AR-1268-1

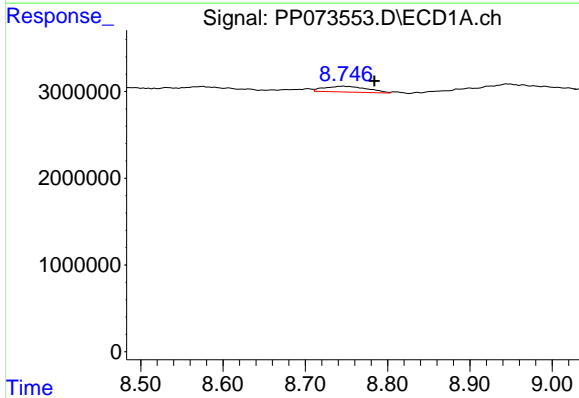
R.T.: 8.704 min
 Delta R.T.: 0.012 min
 Response: 344387
 Conc: 1.54 ng/ml

Instrument :
 ECD_P
 ClientSampleId :
 I.BLK



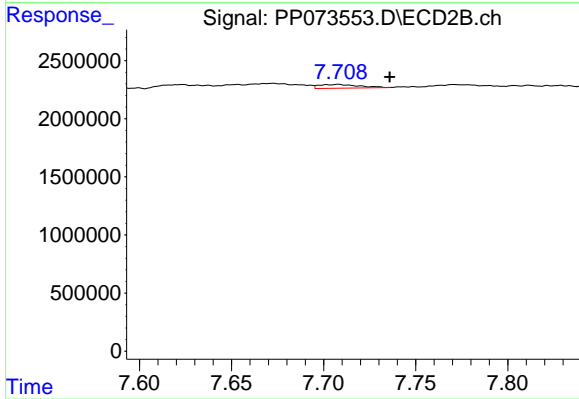
#41 AR-1268-1

R.T.: 7.672 min
 Delta R.T.: 0.003 min
 Response: 1304877
 Conc: 4.25 ng/ml



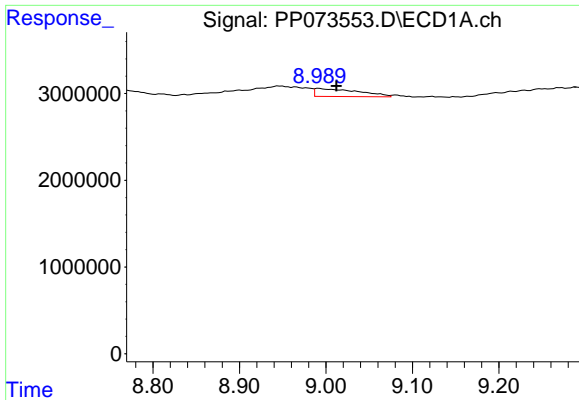
#42 AR-1268-2

R.T.: 8.747 min
 Delta R.T.: -0.037 min
 Response: 2428416
 Conc: 12.75 ng/ml



#42 AR-1268-2

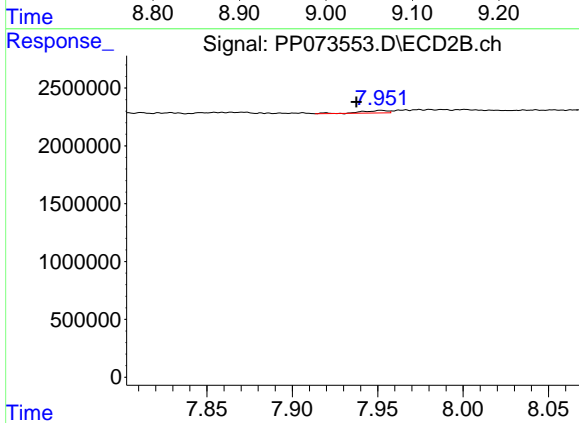
R.T.: 7.708 min
 Delta R.T.: -0.028 min
 Response: 494159
 Conc: 1.86 ng/ml



#43 AR-1268-3

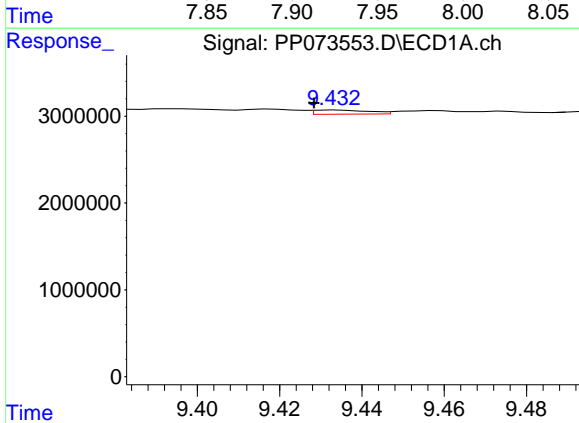
R.T.: 8.992 min
 Delta R.T.: -0.020 min
 Response: 3220241
 Conc: 19.45 ng/ml

Instrument :
 ECD_P
 ClientSampleId :
 I.BLK



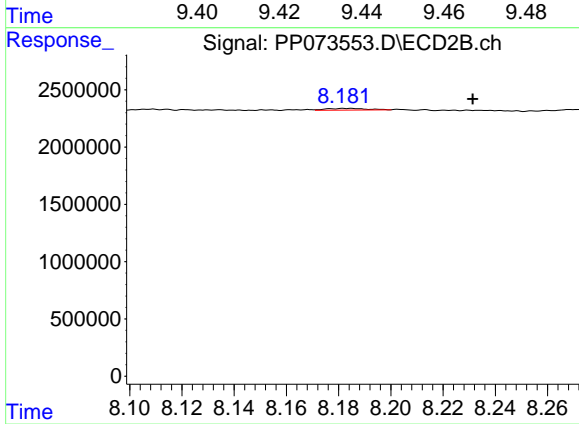
#43 AR-1268-3

R.T.: 7.952 min
 Delta R.T.: 0.015 min
 Response: 233240
 Conc: 1.03 ng/ml



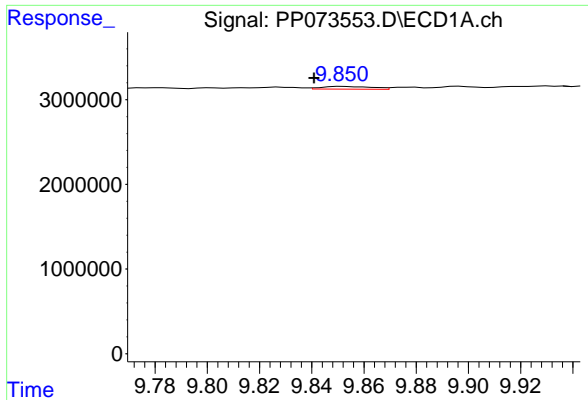
#44 AR-1268-4

R.T.: 9.434 min
 Delta R.T.: 0.006 min
 Response: 447229
 Conc: 6.43 ng/ml



#44 AR-1268-4

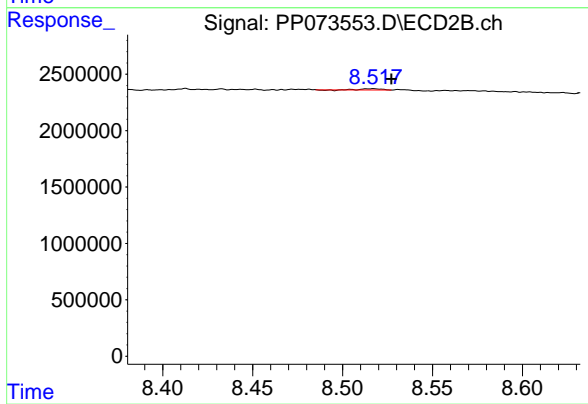
R.T.: 8.184 min
 Delta R.T.: -0.048 min
 Response: 180837
 Conc: 1.95 ng/ml



#45 AR-1268-5

R.T.: 9.852 min
 Delta R.T.: 0.011 min
 Response: 423092
 Conc: 0.92 ng/ml

Instrument :
 ECD_P
 ClientSampleId :
 I.BLK



#45 AR-1268-5

R.T.: 8.517 min
 Delta R.T.: -0.011 min
 Response: 82178
 Conc: 0.13 ng/ml