

Data Path : Z:\pestpcbsrv\HPCHEM1\ECD_P\Data\PP070825\
 Data File : PP073554.D
 Signal(s) : Signal #1: ECD1A.ch Signal #2: ECD2B.ch
 Acq On : 07 Jul 2025 21:03
 Operator : YP\AJ
 Sample : AR1660ICC1000
 Misc :
 ALS Vial : 3 Sample Multiplier: 1

Instrument :
 ECD_P
 ClientSampleId :
 AR1660ICC1000

Integration File signal 1: autoint1.e
 Integration File signal 2: autoint2.e
 Quant Time: Jul 08 01:39:10 2025
 Quant Method : Z:\pestpcbsrv\HPCHEM1\ECD_P\methods\PP070825.M
 Quant Title : GC EXTRACTABLES
 QLast Update : Tue Jul 08 01:37:59 2025
 Response via : Initial Calibration
 Integrator: ChemStation

Volume Inj. : 2 µl
 Signal #1 Phase : ZB-MR2 Signal #2 Phase: ZB-MR2
 Signal #1 Info : 30Mx0.32mmx 0.50µ Signal #2 Info : 30M x 0.32mm x 0.25µm

Compound	RT#1	RT#2	Resp#1	Resp#2	ng/ml	ng/ml

System Monitoring Compounds						
1) SA Tetrachlo...	4.486	3.781	131.5E6	177.4E6	93.026	94.696
2) SA Decachlor...	10.176	8.782	107.5E6	128.8E6	93.796	97.280
Target Compounds						
3) L1 AR-1016-1	5.637	4.858	42452248	63548895	900.578	927.437
4) L1 AR-1016-2	5.658	4.876	66518124	95987811	923.237	935.651
5) L1 AR-1016-3	5.720	5.053	39961628	50406684	904.874	919.008
6) L1 AR-1016-4	5.818	5.095	33606097	39688708	918.399	904.134
7) L1 AR-1016-5	6.111	5.308	30910810	50298801	942.795	903.675
31) L7 AR-1260-1	7.227	6.338	55735594	89335231	934.162	898.100
32) L7 AR-1260-2	7.481	6.527	82256765	113.0E6	909.981	911.272
33) L7 AR-1260-3	7.838	6.679	71122512	102.9E6	952.220	916.511
34) L7 AR-1260-4	8.063	7.148	63951646	82942909	958.358	898.144
35) L7 AR-1260-5	8.381	7.390	147.6E6	218.3E6	952.936	940.240

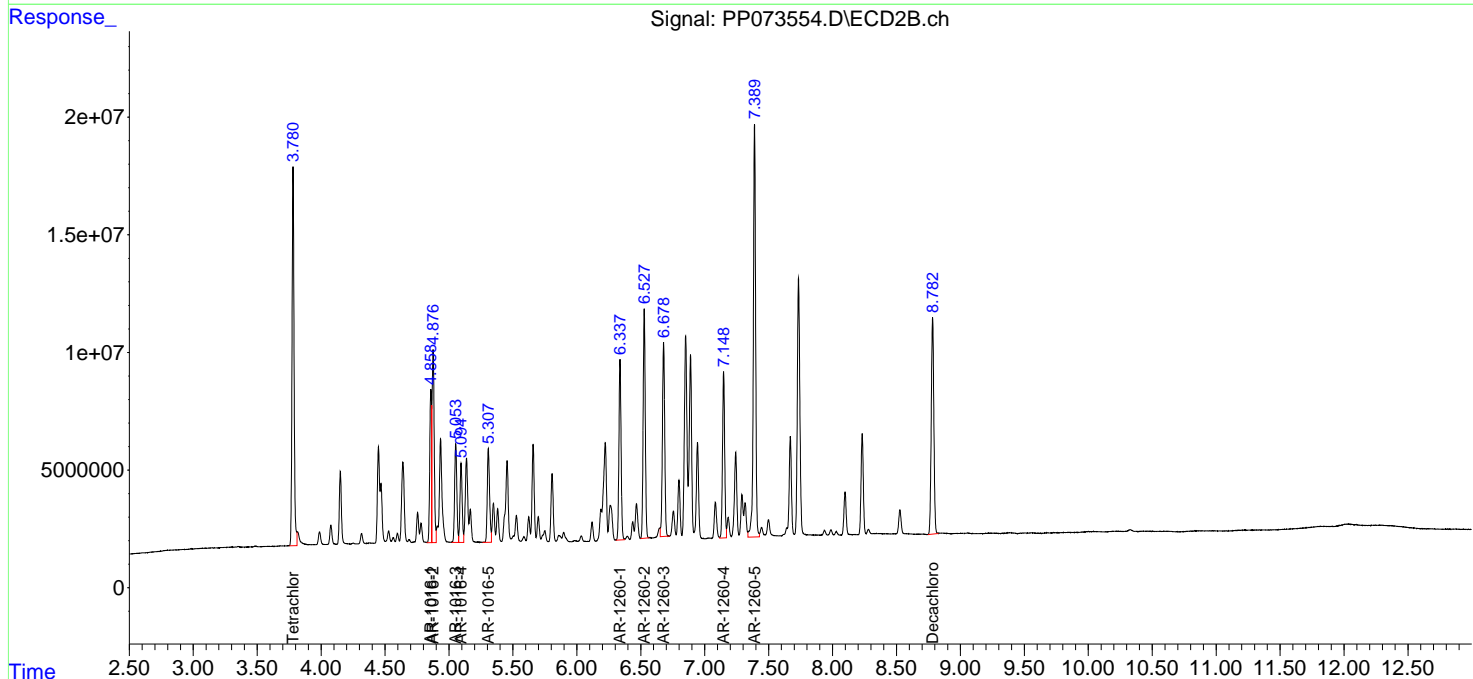
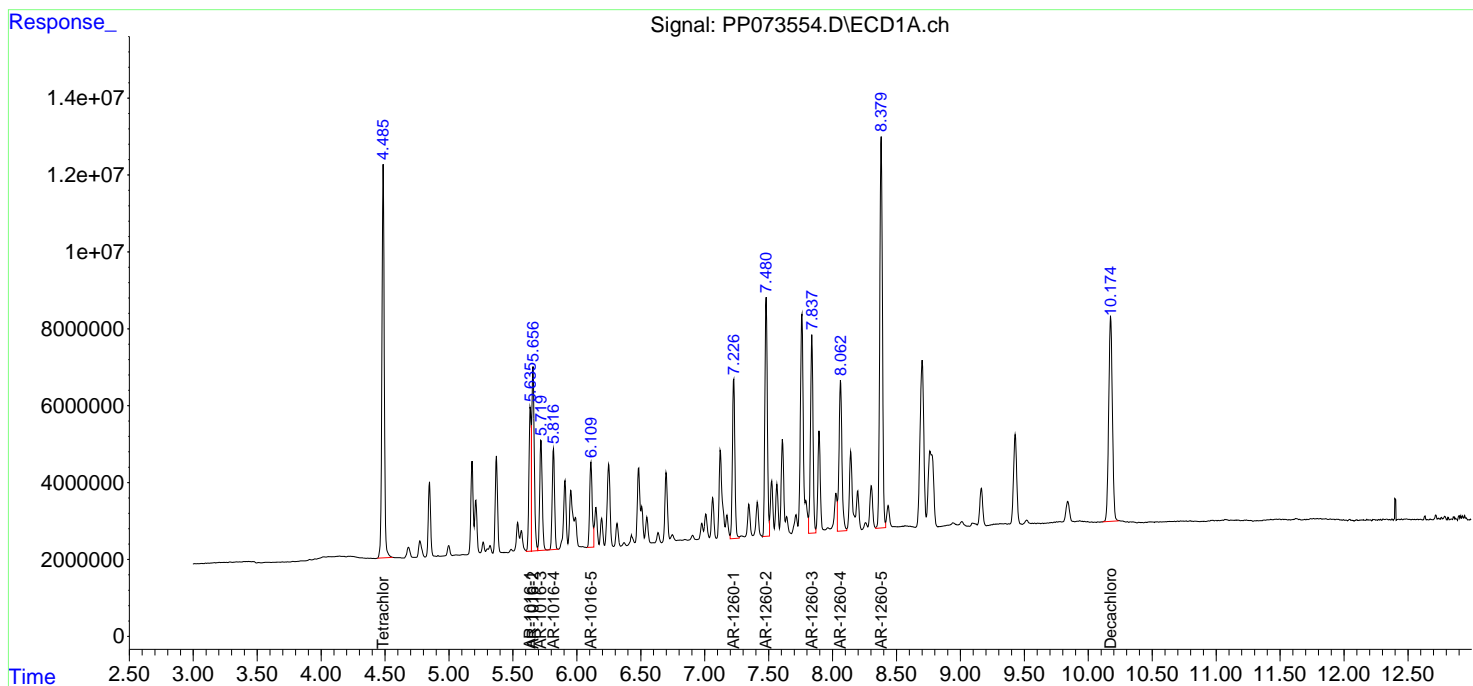
(f)=RT Delta > 1/2 Window (#)=Amounts differ by > 25% (m)=manual int.

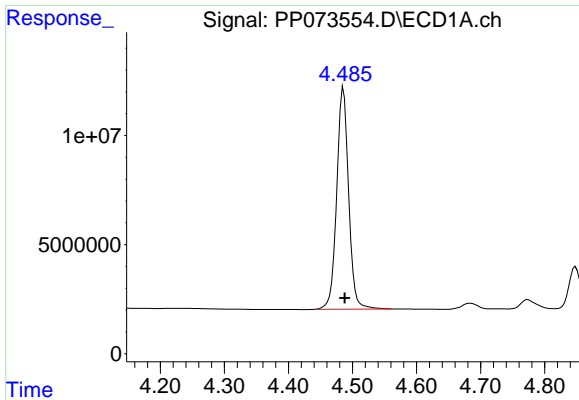
Data Path : Z:\pestpcbsrv\HPCHEM1\ECD_P\Data\PP070825\
 Data File : PP073554.D
 Signal(s) : Signal #1: ECD1A.ch Signal #2: ECD2B.ch
 Acq On : 07 Jul 2025 21:03
 Operator : YP\AJ
 Sample : AR1660ICC1000
 Misc :
 ALS Vial : 3 Sample Multiplier: 1

Instrument :
 ECD_P
 ClientSampleId :
 AR1660ICC1000

Integration File signal 1: autoint1.e
 Integration File signal 2: autoint2.e
 Quant Time: Jul 08 01:39:10 2025
 Quant Method : Z:\pestpcbsrv\HPCHEM1\ECD_P\methods\PP070825.M
 Quant Title : GC EXTRACTABLES
 QLast Update : Tue Jul 08 01:37:59 2025
 Response via : Initial Calibration
 Integrator: ChemStation

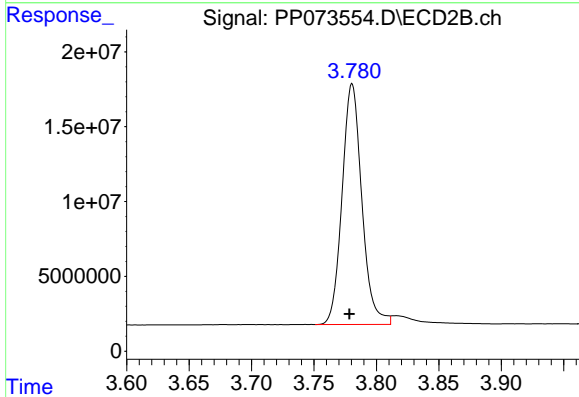
Volume Inj. : 2 µl
 Signal #1 Phase : ZB-MR1 Signal #2 Phase: ZB-MR2
 Signal #1 Info : 30Mx0.32mmx 0.50µ Signal #2 Info : 30M x 0.32mm x 0.25µm



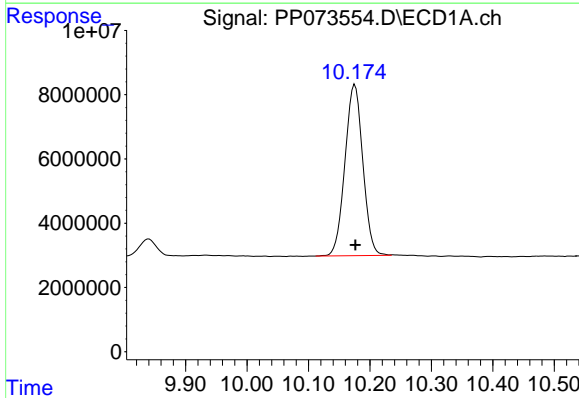


#1 Tetrachloro-m-xylene
 R.T.: 4.486 min
 Delta R.T.: -0.002 min
 Response: 131462742
 Conc: 93.03 ng/ml

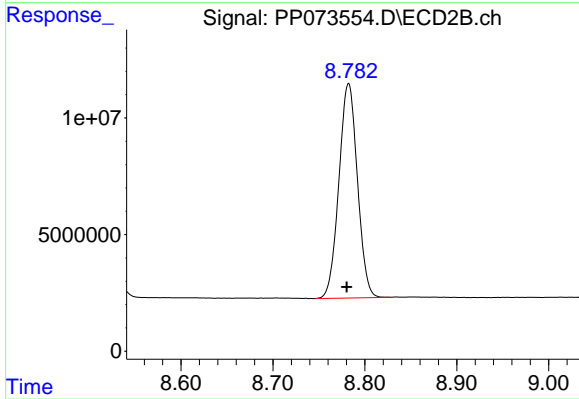
Instrument :
 ECD_P
 ClientSampleId :
 AR1660ICC1000



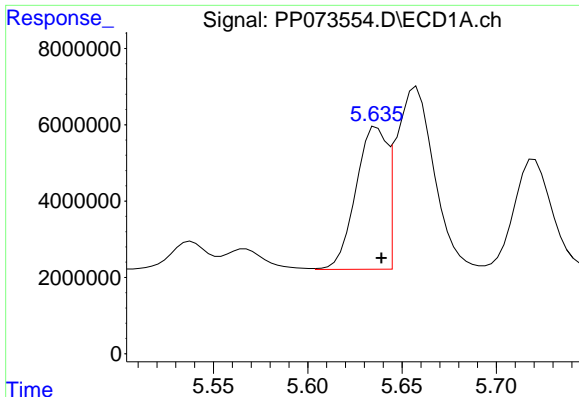
#1 Tetrachloro-m-xylene
 R.T.: 3.781 min
 Delta R.T.: 0.002 min
 Response: 177403145
 Conc: 94.70 ng/ml



#2 Decachlorobiphenyl
 R.T.: 10.176 min
 Delta R.T.: 0.000 min
 Response: 107500249
 Conc: 93.80 ng/ml



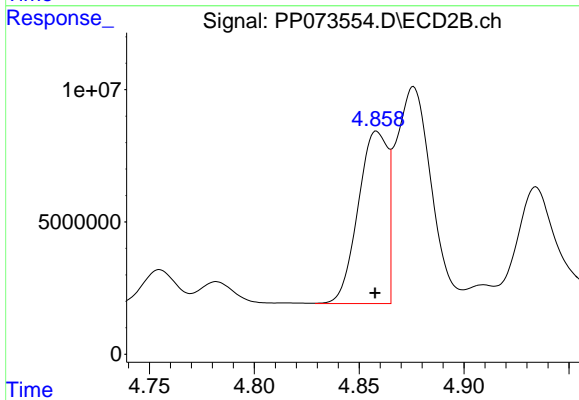
#2 Decachlorobiphenyl
 R.T.: 8.782 min
 Delta R.T.: 0.002 min
 Response: 128848236
 Conc: 97.28 ng/ml



#3 AR-1016-1

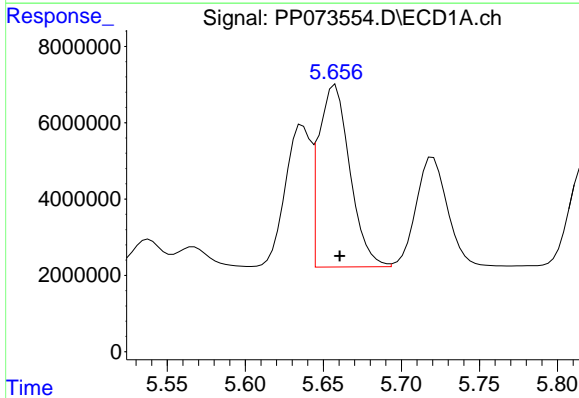
R.T.: 5.637 min
 Delta R.T.: -0.002 min
 Response: 42452248
 Conc: 900.58 ng/ml

Instrument :
 ECD_P
 ClientSampleId :
 AR1660ICC1000



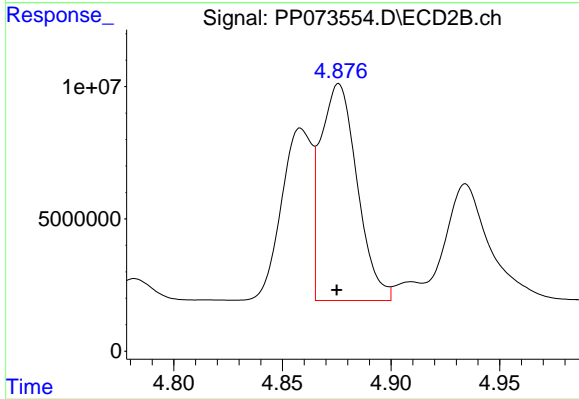
#3 AR-1016-1

R.T.: 4.858 min
 Delta R.T.: 0.000 min
 Response: 63548895
 Conc: 927.44 ng/ml



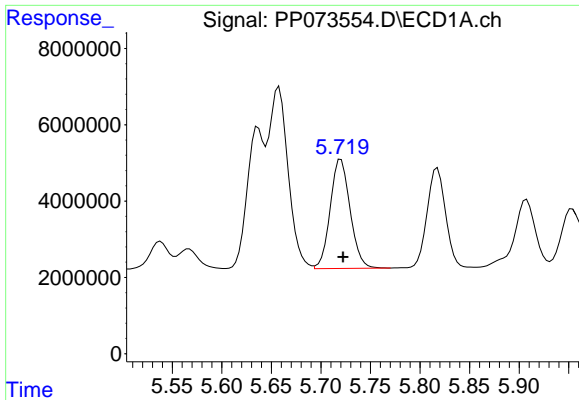
#4 AR-1016-2

R.T.: 5.658 min
 Delta R.T.: -0.003 min
 Response: 66518124
 Conc: 923.24 ng/ml



#4 AR-1016-2

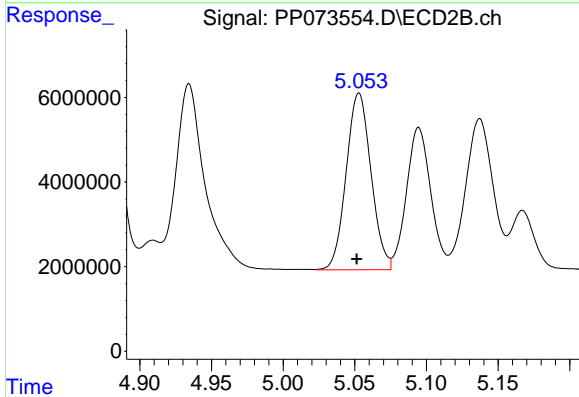
R.T.: 4.876 min
 Delta R.T.: 0.000 min
 Response: 95987811
 Conc: 935.65 ng/ml



#5 AR-1016-3

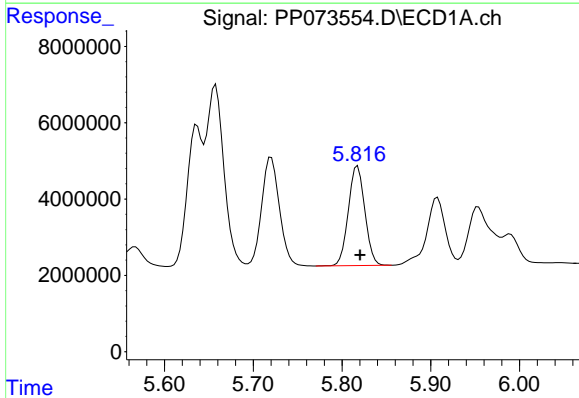
R.T.: 5.720 min
 Delta R.T.: -0.002 min
 Response: 39961628
 Conc: 904.87 ng/ml

Instrument :
 ECD_P
 ClientSampleId :
 AR1660ICC1000



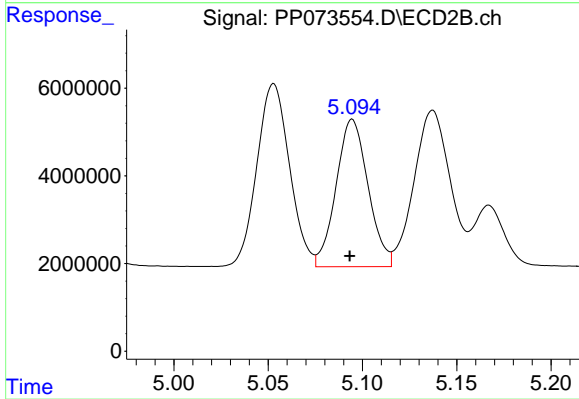
#5 AR-1016-3

R.T.: 5.053 min
 Delta R.T.: 0.001 min
 Response: 50406684
 Conc: 919.01 ng/ml



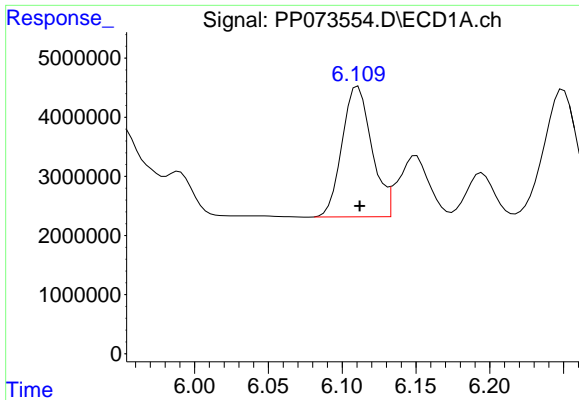
#6 AR-1016-4

R.T.: 5.818 min
 Delta R.T.: -0.003 min
 Response: 33606097
 Conc: 918.40 ng/ml



#6 AR-1016-4

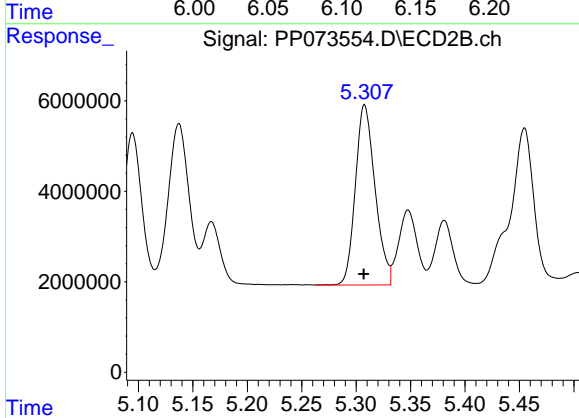
R.T.: 5.095 min
 Delta R.T.: 0.001 min
 Response: 39688708
 Conc: 904.13 ng/ml



#7 AR-1016-5

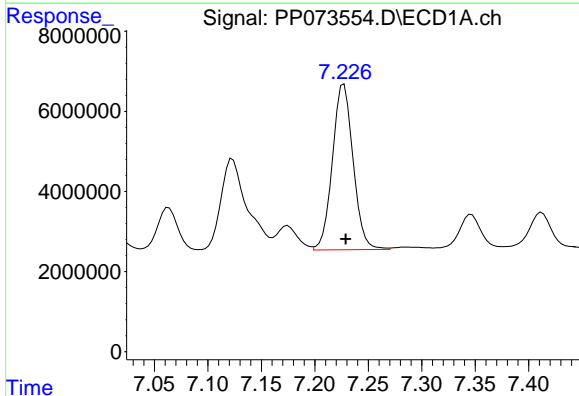
R.T.: 6.111 min
 Delta R.T.: -0.001 min
 Response: 30910810
 Conc: 942.79 ng/ml

Instrument :
 ECD_P
 ClientSampleId :
 AR1660ICC1000



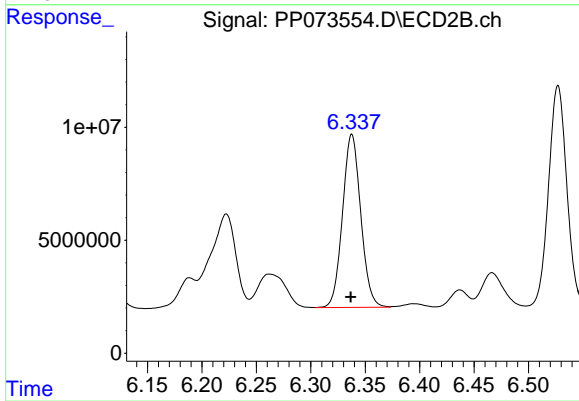
#7 AR-1016-5

R.T.: 5.308 min
 Delta R.T.: 0.000 min
 Response: 50298801
 Conc: 903.67 ng/ml



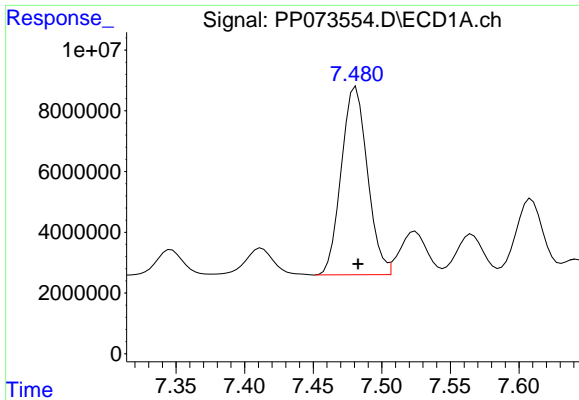
#31 AR-1260-1

R.T.: 7.227 min
 Delta R.T.: -0.002 min
 Response: 55735594
 Conc: 934.16 ng/ml



#31 AR-1260-1

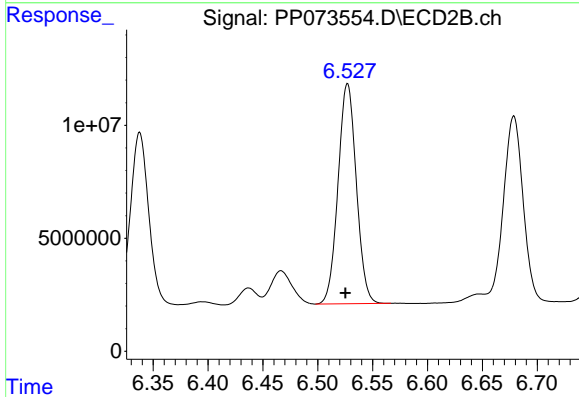
R.T.: 6.338 min
 Delta R.T.: 0.001 min
 Response: 89335231
 Conc: 898.10 ng/ml



#32 AR-1260-2

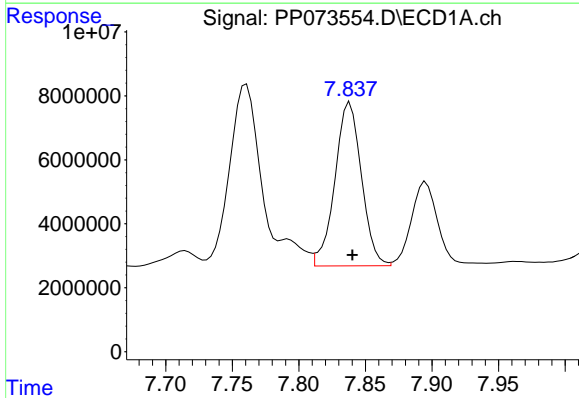
R.T.: 7.481 min
 Delta R.T.: -0.002 min
 Response: 82256765
 Conc: 909.98 ng/ml

Instrument :
 ECD_P
 ClientSampleId :
 AR1660ICC1000



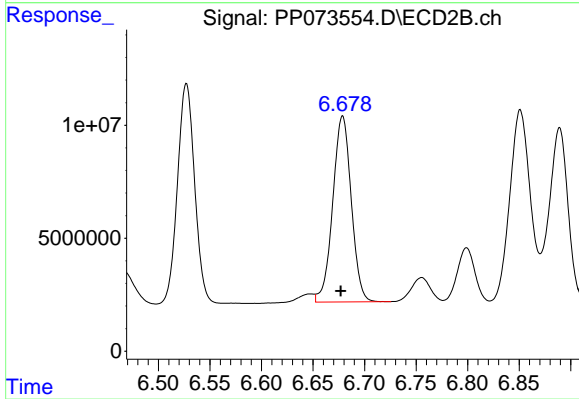
#32 AR-1260-2

R.T.: 6.527 min
 Delta R.T.: 0.002 min
 Response: 113000947
 Conc: 911.27 ng/ml



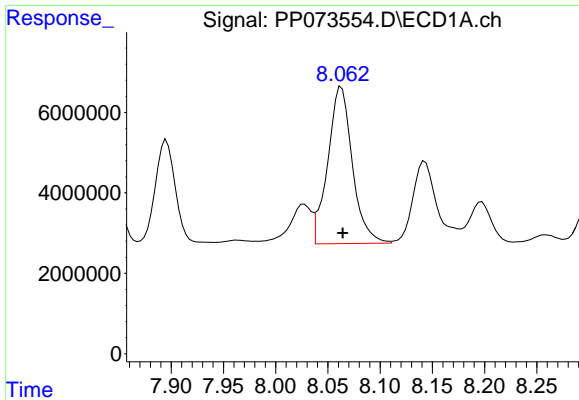
#33 AR-1260-3

R.T.: 7.838 min
 Delta R.T.: -0.002 min
 Response: 71122512
 Conc: 952.22 ng/ml



#33 AR-1260-3

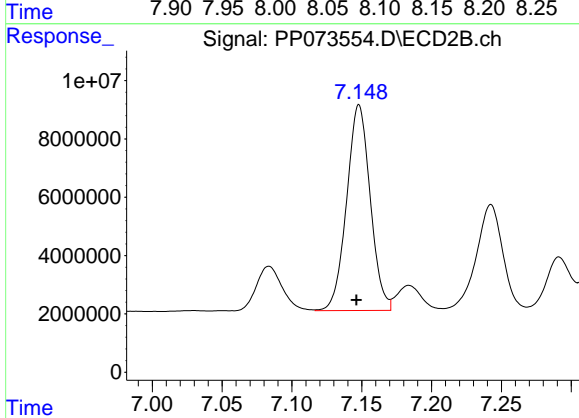
R.T.: 6.679 min
 Delta R.T.: 0.002 min
 Response: 102918015
 Conc: 916.51 ng/ml



#34 AR-1260-4

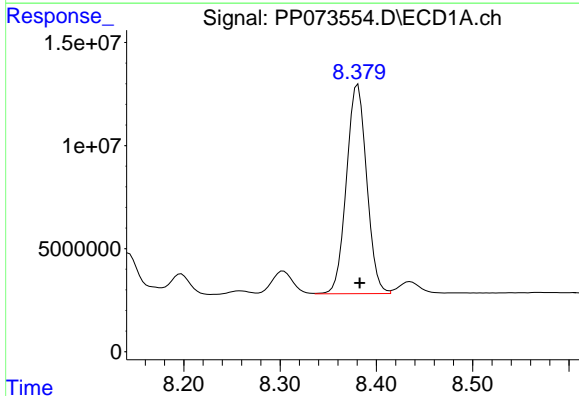
R.T.: 8.063 min
 Delta R.T.: -0.001 min
 Response: 63951646
 Conc: 958.36 ng/ml

Instrument :
 ECD_P
 ClientSampleId :
 AR1660ICC1000



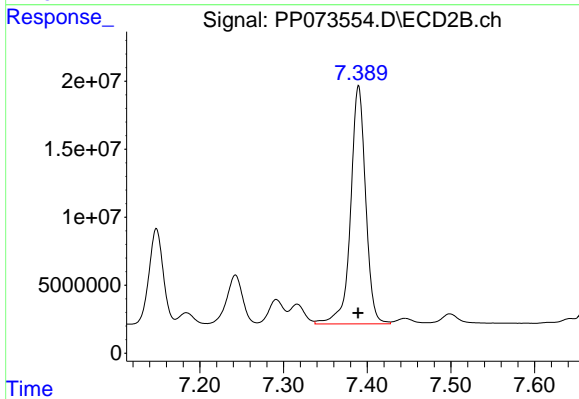
#34 AR-1260-4

R.T.: 7.148 min
 Delta R.T.: 0.002 min
 Response: 82942909
 Conc: 898.14 ng/ml



#35 AR-1260-5

R.T.: 8.381 min
 Delta R.T.: -0.002 min
 Response: 147606205
 Conc: 952.94 ng/ml



#35 AR-1260-5

R.T.: 7.390 min
 Delta R.T.: 0.000 min
 Response: 218347404
 Conc: 940.24 ng/ml