

Data Path : Z:\pestpcbsrv\HPCHEM1\ECD_P\Data\PP070825\
 Data File : PP073558.D
 Signal(s) : Signal #1: ECD1A.ch Signal #2: ECD2B.ch
 Acq On : 07 Jul 2025 22:08
 Operator : YP\AJ
 Sample : AR1660ICC050
 Misc :
 ALS Vial : 7 Sample Multiplier: 1

Instrument :
 ECD_P
 ClientSampleId :
 AR1660ICC050

Integration File signal 1: autoint1.e
 Integration File signal 2: autoint2.e
 Quant Time: Jul 08 01:40:50 2025
 Quant Method : Z:\pestpcbsrv\HPCHEM1\ECD_P\methods\PP070825.M
 Quant Title : GC EXTRACTABLES
 QLast Update : Tue Jul 08 01:37:59 2025
 Response via : Initial Calibration
 Integrator: ChemStation

Volume Inj. : 2 µl
 Signal #1 Phase : ZB-MR2 Signal #2 Phase: ZB-MR2
 Signal #1 Info : 30Mx0.32mmx 0.50µ Signal #2 Info : 30M x 0.32mm x 0.25µm

Compound	RT#1	RT#2	Resp#1	Resp#2	ng/ml	ng/ml

System Monitoring Compounds						
1) SA Tetrachlo...	4.485	3.779	6400868	8634125	4.529	4.609
2) SA Decachlor...	10.173	8.780	4780120	5986472	4.171	4.520
Target Compounds						
3) L1 AR-1016-1	5.637	4.857	2553683	3433572	54.174	50.110
4) L1 AR-1016-2	5.658	4.875	3532445	5058097	49.029	49.304
5) L1 AR-1016-3	5.719	5.052	2287754	2711653	51.803	49.438
6) L1 AR-1016-4	5.817	5.094	1779663	2333668	48.635	53.162
7) L1 AR-1016-5	6.109	5.307	1335478	2709671	40.733	48.682
31) L7 AR-1260-1	7.226	6.337	2914675	5720547	48.852	57.510
32) L7 AR-1260-2	7.482	6.525	6085083	6438631	67.317	51.923
33) L7 AR-1260-3	7.838	6.677	3450365	5301254	46.195	47.209
34) L7 AR-1260-4	8.061	7.146	3038521	5704265	45.534	61.768 #
35) L7 AR-1260-5	8.379	7.388	6955237	12058667	44.903	51.927

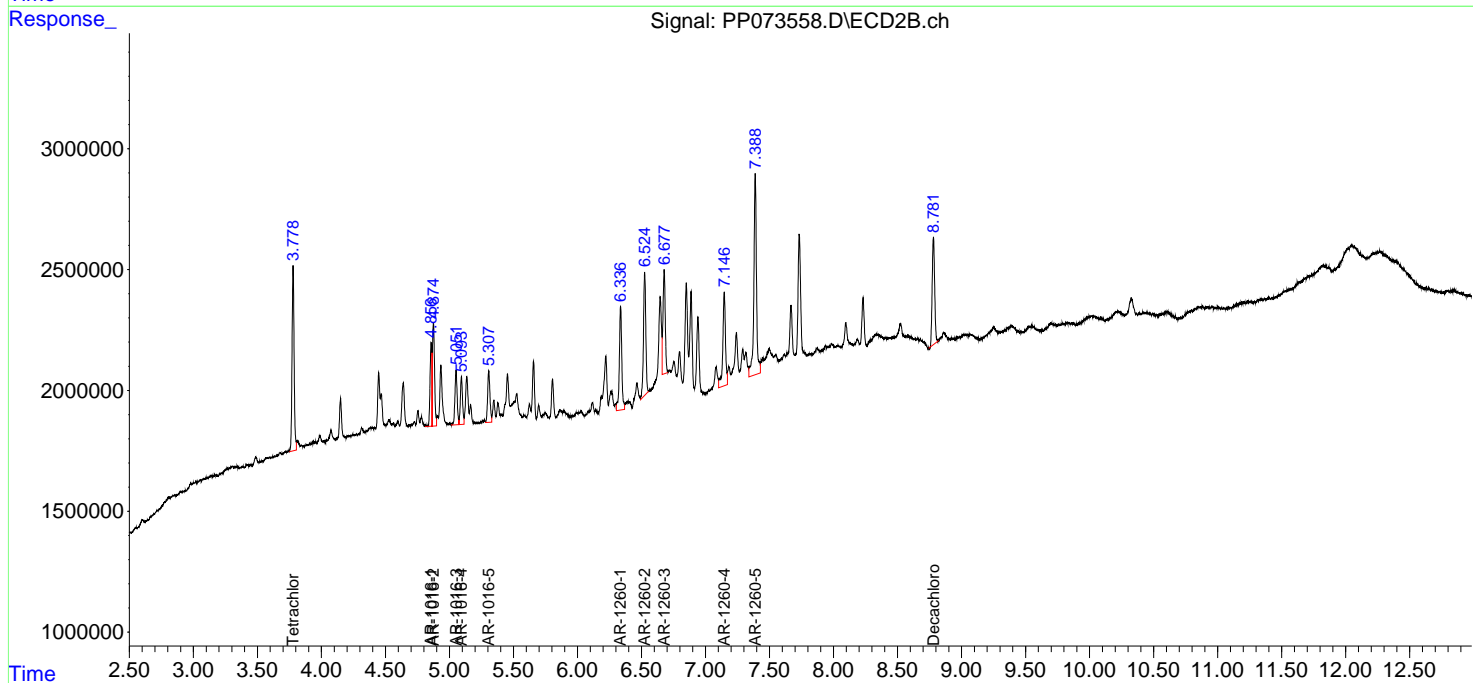
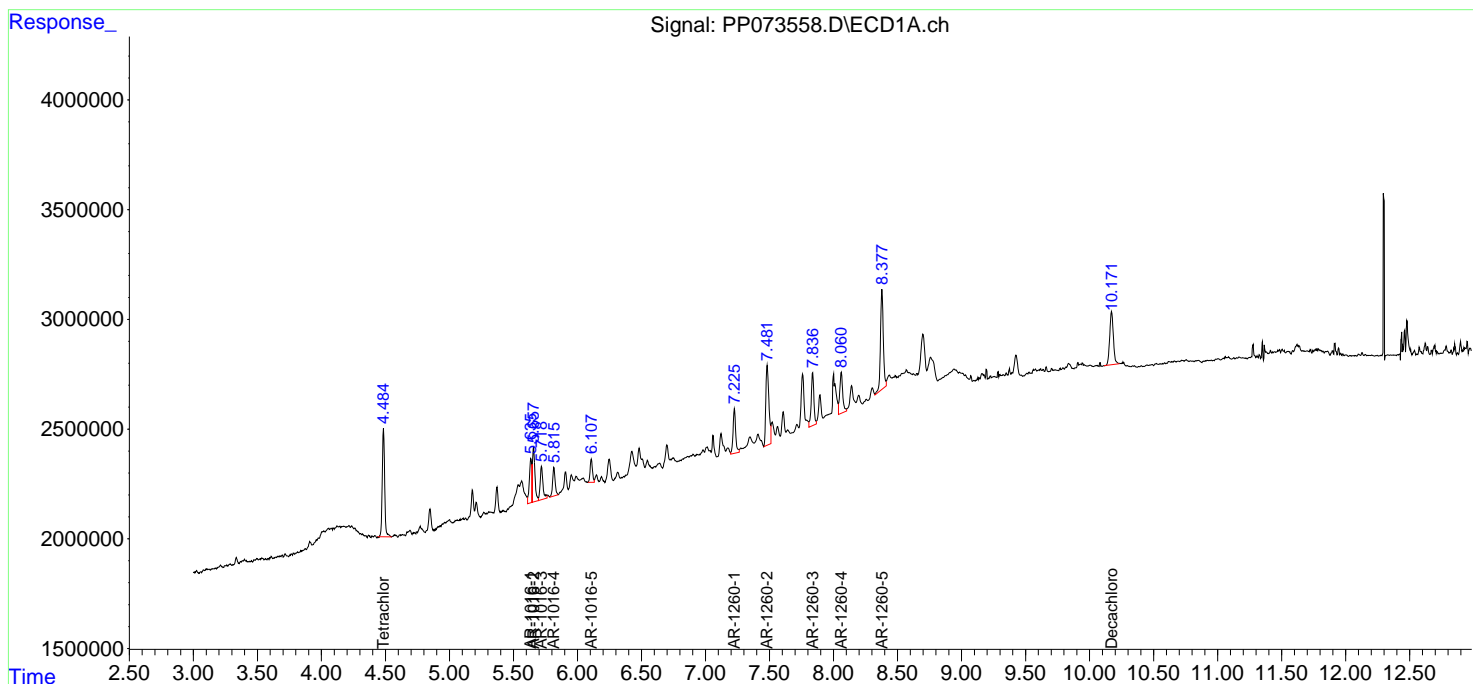
(f)=RT Delta > 1/2 Window (#)=Amounts differ by > 25% (m)=manual int.

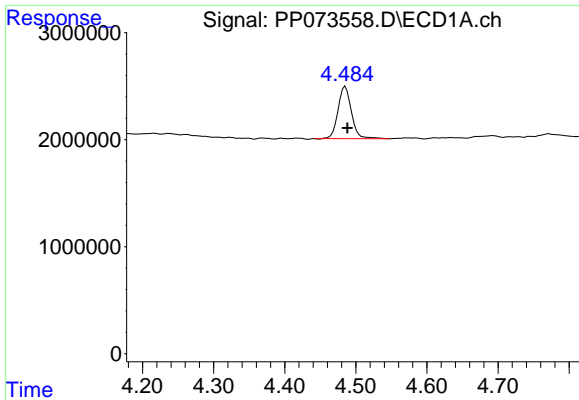
Data Path : Z:\pestpcbsrv\HPCHEM1\ECD_P\Data\PP070825\
 Data File : PP073558.D
 Signal(s) : Signal #1: ECD1A.ch Signal #2: ECD2B.ch
 Acq On : 07 Jul 2025 22:08
 Operator : YP\AJ
 Sample : AR1660ICC050
 Misc :
 ALS Vial : 7 Sample Multiplier: 1

Instrument :
 ECD_P
 ClientSampleId :
 AR1660ICC050

Integration File signal 1: autoint1.e
 Integration File signal 2: autoint2.e
 Quant Time: Jul 08 01:40:50 2025
 Quant Method : Z:\pestpcbsrv\HPCHEM1\ECD_P\methods\PP070825.M
 Quant Title : GC EXTRACTABLES
 QLast Update : Tue Jul 08 01:37:59 2025
 Response via : Initial Calibration
 Integrator: ChemStation

Volume Inj. : 2 µl
 Signal #1 Phase : ZB-MR1 Signal #2 Phase: ZB-MR2
 Signal #1 Info : 30Mx0.32mmx 0.50µ Signal #2 Info : 30M x 0.32mm x 0.25µm

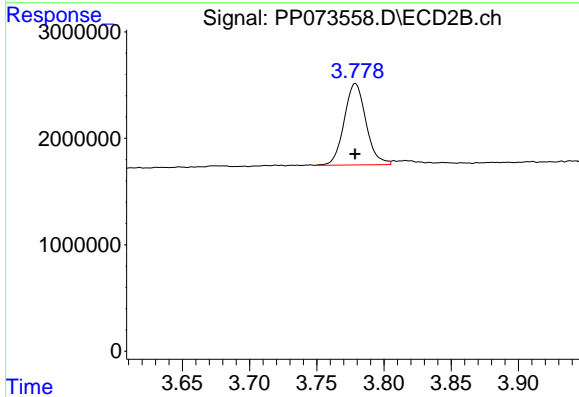




#1 Tetrachloro-m-xylene

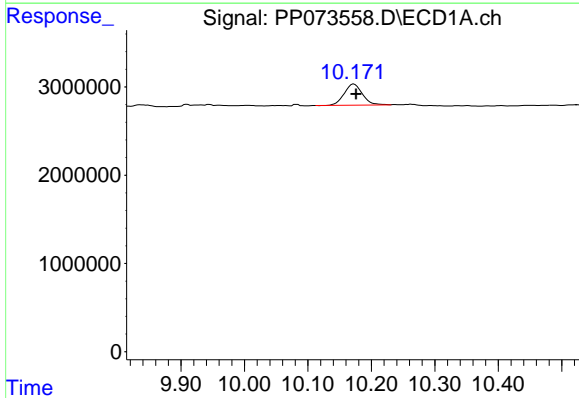
R.T.: 4.485 min
 Delta R.T.: -0.003 min
 Response: 6400868
 Conc: 4.53 ng/ml

Instrument :
 ECD_P
 ClientSampleId :
 AR1660ICC050



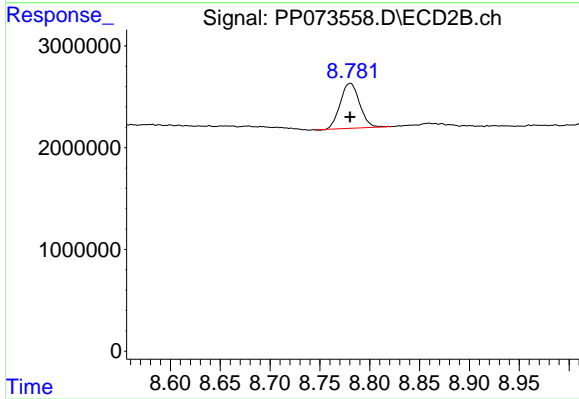
#1 Tetrachloro-m-xylene

R.T.: 3.779 min
 Delta R.T.: 0.000 min
 Response: 8634125
 Conc: 4.61 ng/ml



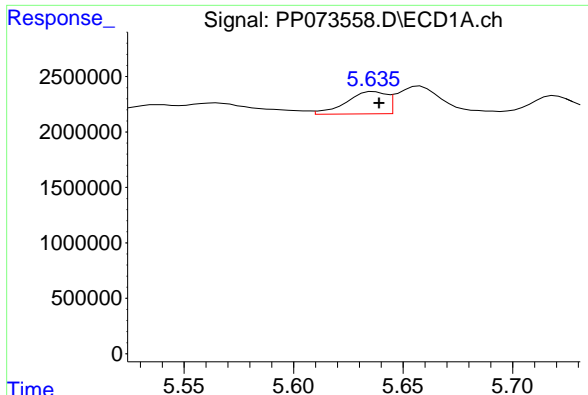
#2 Decachlorobiphenyl

R.T.: 10.173 min
 Delta R.T.: -0.004 min
 Response: 4780120
 Conc: 4.17 ng/ml



#2 Decachlorobiphenyl

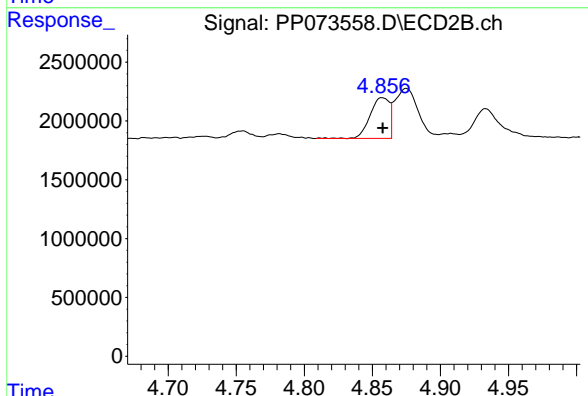
R.T.: 8.780 min
 Delta R.T.: 0.000 min
 Response: 5986472
 Conc: 4.52 ng/ml



#3 AR-1016-1

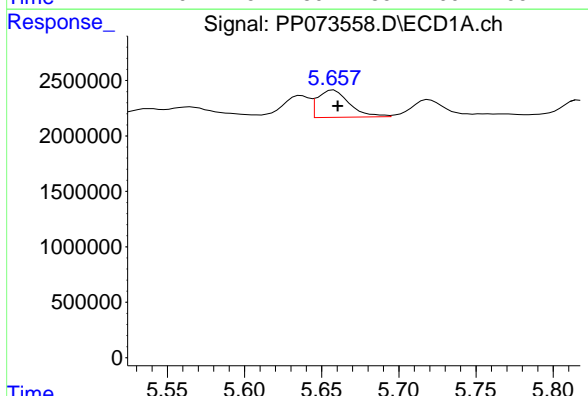
R.T.: 5.637 min
 Delta R.T.: -0.002 min
 Response: 2553683
 Conc: 54.17 ng/ml

Instrument :
 ECD_P
 ClientSampleId :
 AR1660ICC050



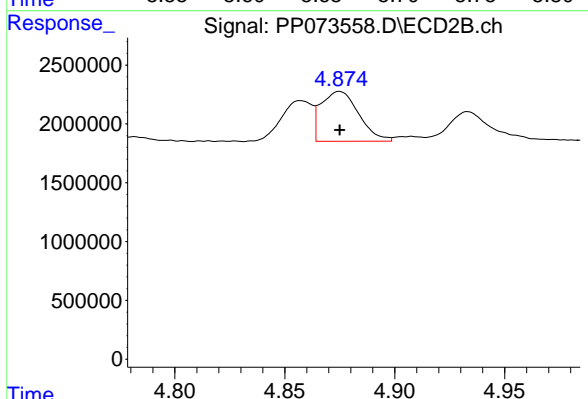
#3 AR-1016-1

R.T.: 4.857 min
 Delta R.T.: 0.000 min
 Response: 3433572
 Conc: 50.11 ng/ml



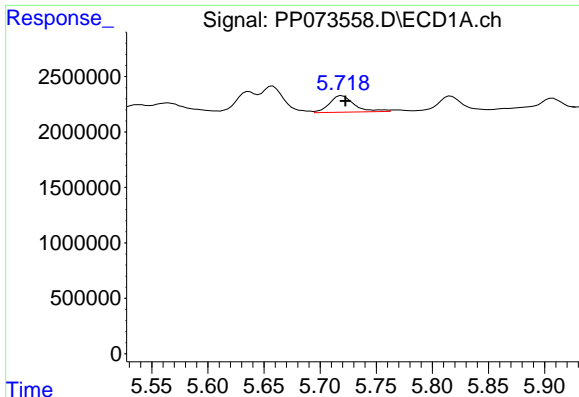
#4 AR-1016-2

R.T.: 5.658 min
 Delta R.T.: -0.003 min
 Response: 3532445
 Conc: 49.03 ng/ml



#4 AR-1016-2

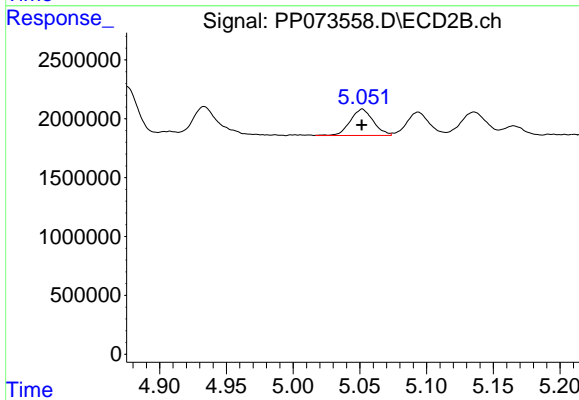
R.T.: 4.875 min
 Delta R.T.: 0.000 min
 Response: 5058097
 Conc: 49.30 ng/ml



#5 AR-1016-3

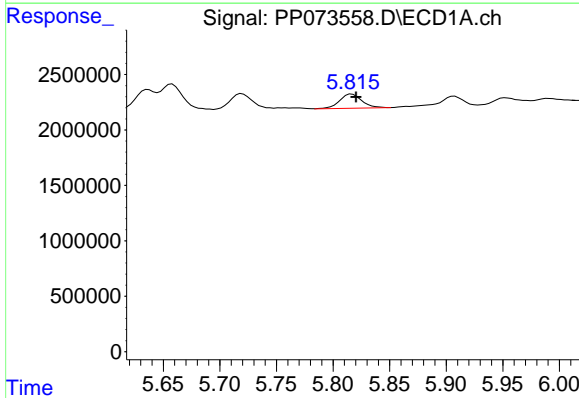
R.T.: 5.719 min
 Delta R.T.: -0.003 min
 Response: 2287754
 Conc: 51.80 ng/ml

Instrument :
 ECD_P
 ClientSampleId :
 AR1660ICC050



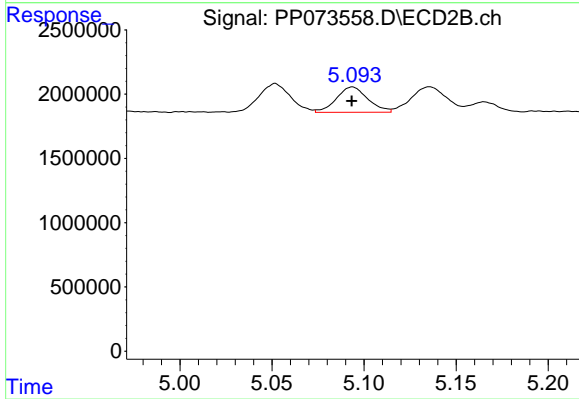
#5 AR-1016-3

R.T.: 5.052 min
 Delta R.T.: 0.000 min
 Response: 2711653
 Conc: 49.44 ng/ml



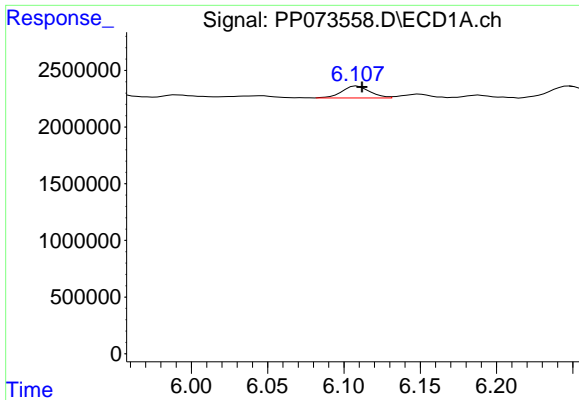
#6 AR-1016-4

R.T.: 5.817 min
 Delta R.T.: -0.004 min
 Response: 1779663
 Conc: 48.64 ng/ml



#6 AR-1016-4

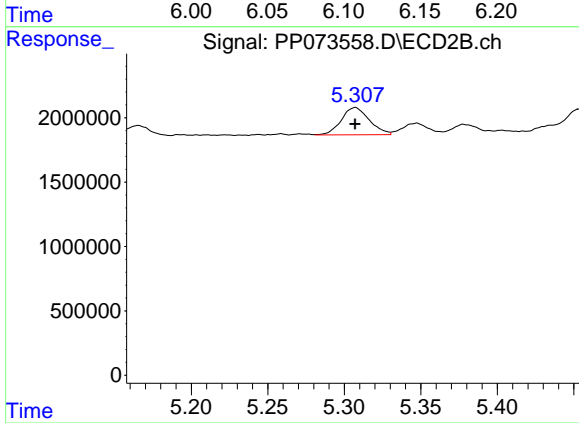
R.T.: 5.094 min
 Delta R.T.: 0.000 min
 Response: 2333668
 Conc: 53.16 ng/ml



#7 AR-1016-5

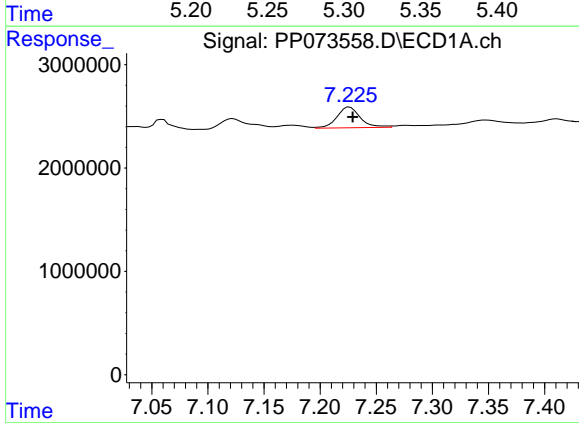
R.T.: 6.109 min
 Delta R.T.: -0.003 min
 Response: 1335478
 Conc: 40.73 ng/ml

Instrument :
 ECD_P
 ClientSampleId :
 AR1660ICC050



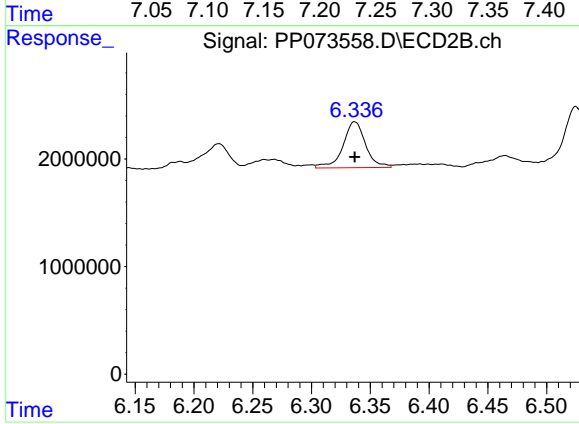
#7 AR-1016-5

R.T.: 5.307 min
 Delta R.T.: 0.000 min
 Response: 2709671
 Conc: 48.68 ng/ml



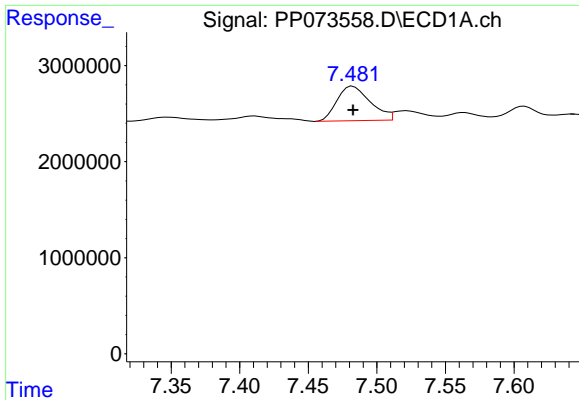
#31 AR-1260-1

R.T.: 7.226 min
 Delta R.T.: -0.003 min
 Response: 2914675
 Conc: 48.85 ng/ml



#31 AR-1260-1

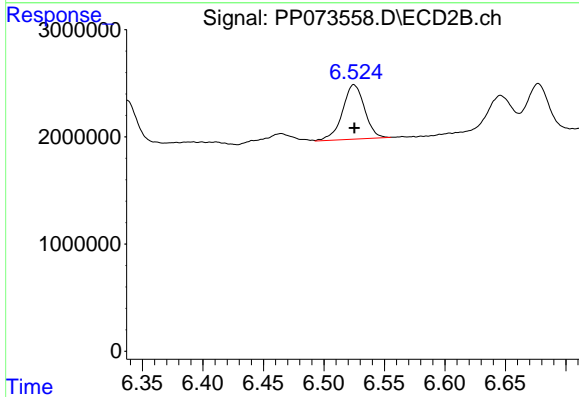
R.T.: 6.337 min
 Delta R.T.: 0.000 min
 Response: 5720547
 Conc: 57.51 ng/ml



#32 AR-1260-2

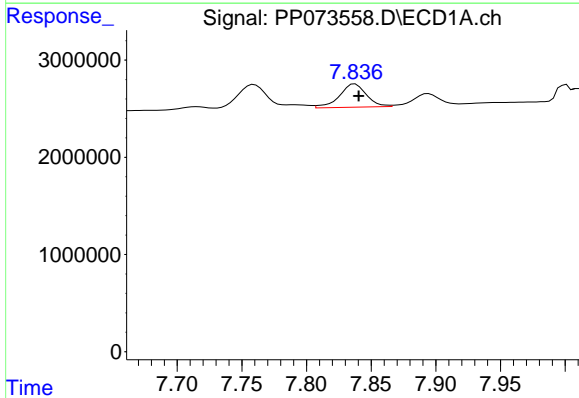
R.T.: 7.482 min
 Delta R.T.: 0.000 min
 Response: 6085083
 Conc: 67.32 ng/ml

Instrument :
 ECD_P
 ClientSampleId :
 AR1660ICC050



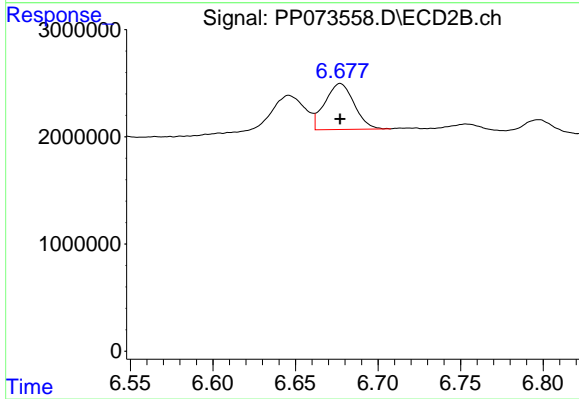
#32 AR-1260-2

R.T.: 6.525 min
 Delta R.T.: 0.000 min
 Response: 6438631
 Conc: 51.92 ng/ml



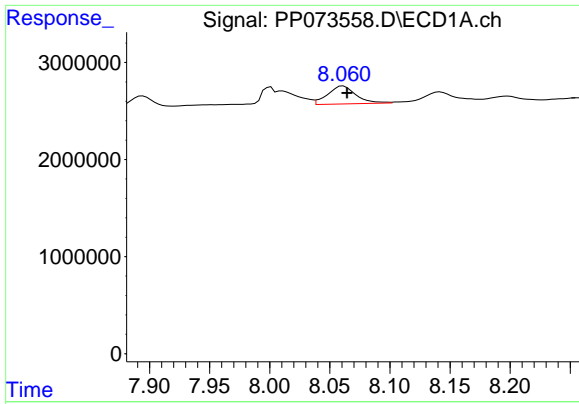
#33 AR-1260-3

R.T.: 7.838 min
 Delta R.T.: -0.003 min
 Response: 3450365
 Conc: 46.20 ng/ml



#33 AR-1260-3

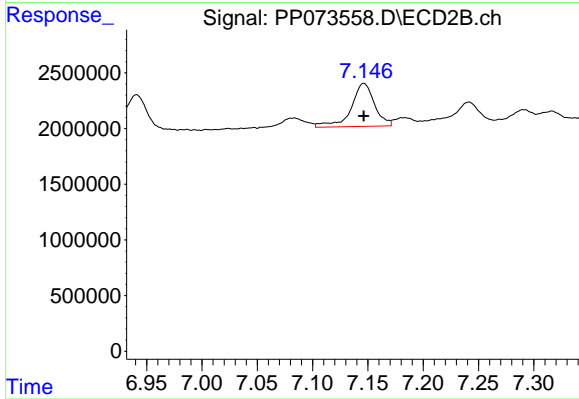
R.T.: 6.677 min
 Delta R.T.: 0.000 min
 Response: 5301254
 Conc: 47.21 ng/ml



#34 AR-1260-4

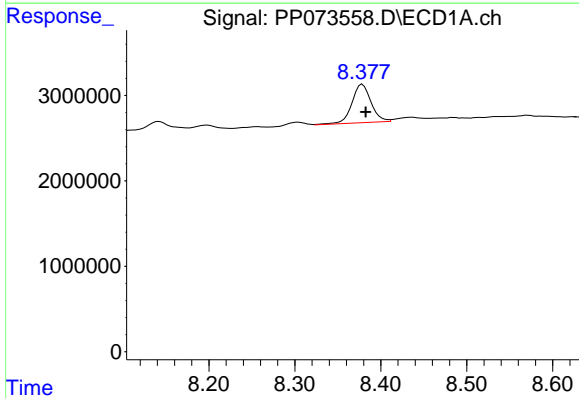
R.T.: 8.061 min
Delta R.T.: -0.003 min
Response: 3038521
Conc: 45.53 ng/ml

Instrument :
ECD_P
ClientSampleId :
AR1660ICC050



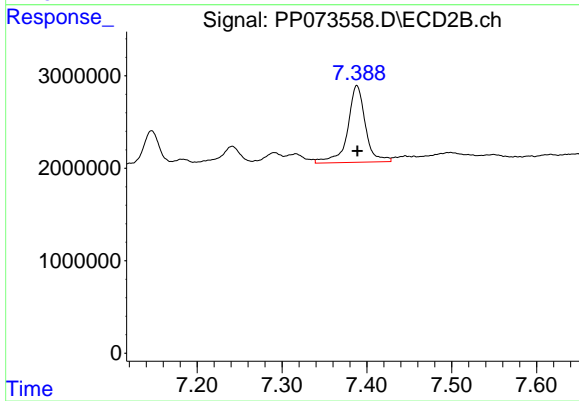
#34 AR-1260-4

R.T.: 7.146 min
Delta R.T.: 0.000 min
Response: 5704265
Conc: 61.77 ng/ml



#35 AR-1260-5

R.T.: 8.379 min
Delta R.T.: -0.004 min
Response: 6955237
Conc: 44.90 ng/ml



#35 AR-1260-5

R.T.: 7.388 min
Delta R.T.: 0.000 min
Response: 12058667
Conc: 51.93 ng/ml