

Data Path : Z:\pestpcbsrv\HPCHEM1\ECD_P\Data\PP070825\
 Data File : PP073561.D
 Signal(s) : Signal #1: ECD1A.ch Signal #2: ECD2B.ch
 Acq On : 07 Jul 2025 22:57
 Operator : YP\AJ
 Sample : AR1242ICC1000
 Misc :
 ALS Vial : 10 Sample Multiplier: 1

Instrument :
 ECD_P
ClientSampleId :
 AR1242ICC1000

Integration File signal 1: autoint1.e
 Integration File signal 2: autoint2.e
 Quant Time: Jul 08 02:03:57 2025
 Quant Method : Z:\pestpcbsrv\HPCHEM1\ECD_P\methods\PP070825.M
 Quant Title : GC EXTRACTABLES
 QLast Update : Tue Jul 08 02:03:06 2025
 Response via : Initial Calibration
 Integrator: ChemStation

Volume Inj. : 2 µl
 Signal #1 Phase : ZB-MR1 Signal #2 Phase: ZB-MR2
 Signal #1 Info : 30Mx0.32mmx 0.50µ Signal #2 Info : 30M x 0.32mm x 0.25µm

Compound	RT#1	RT#2	Resp#1	Resp#2	ng/ml	ng/ml

System Monitoring Compounds						
1) SA Tetrachlo...	4.489	3.779	133.6E6	178.7E6	93.639	94.390
2) SA Decachlor...	10.177	8.779	109.6E6	130.7E6	95.735	96.573
Target Compounds						
16) L4 AR-1242-1	5.639	4.857	37824570	53636877	927.891	888.918
17) L4 AR-1242-2	5.661	4.874	59433539	81745742	941.383	919.241
18) L4 AR-1242-3	5.723	5.051	35307728	43191003	927.513	907.757
19) L4 AR-1242-4	5.820	5.135	29431539	40719317	927.311	902.527
20) L4 AR-1242-5	6.549	5.656	31742412	53173633	951.704	931.769

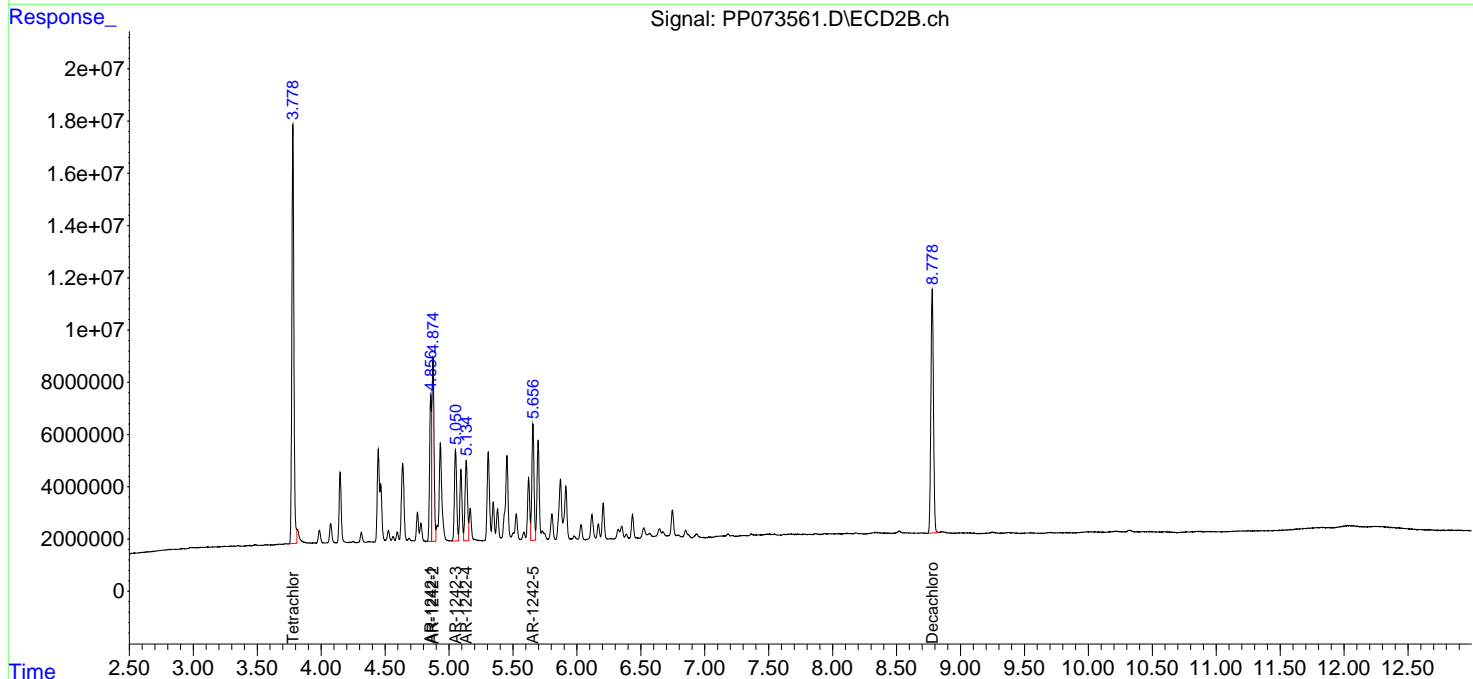
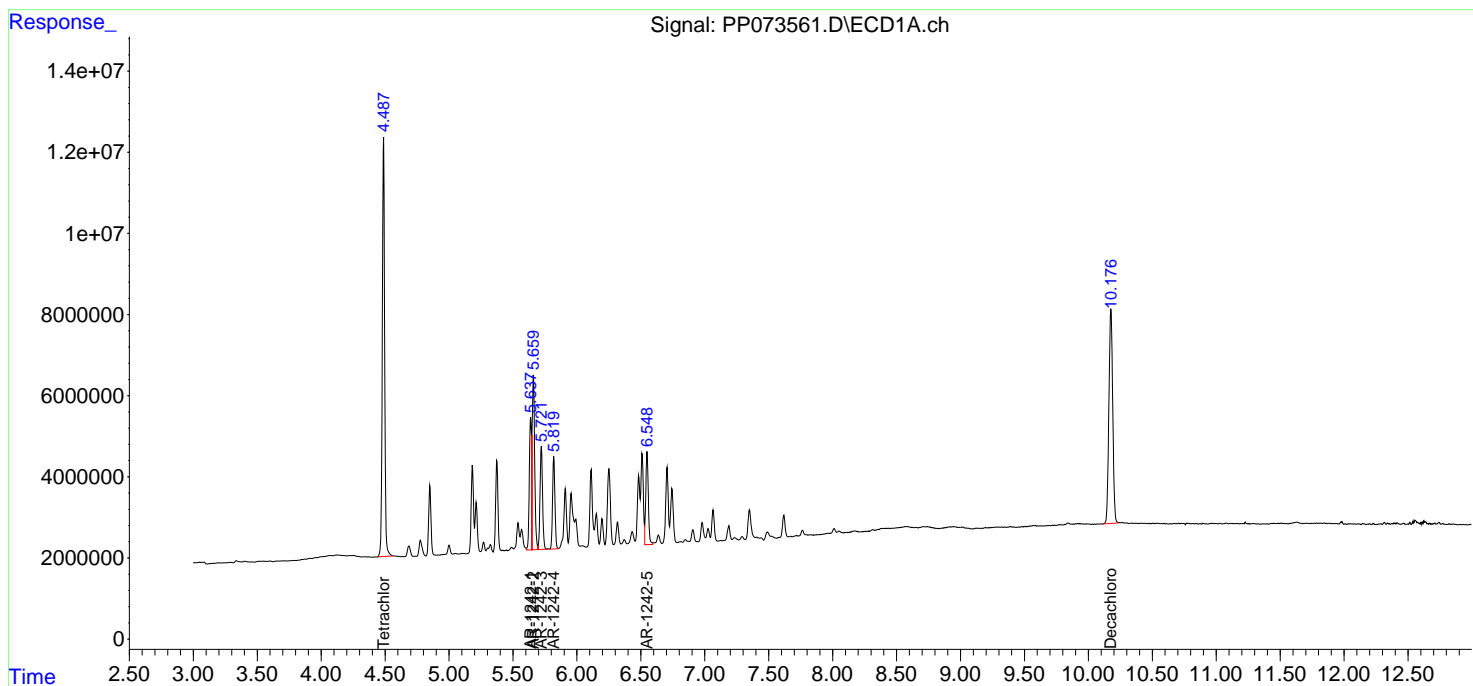
(f)=RT Delta > 1/2 Window (#)=Amounts differ by > 25% (m)=manual int.

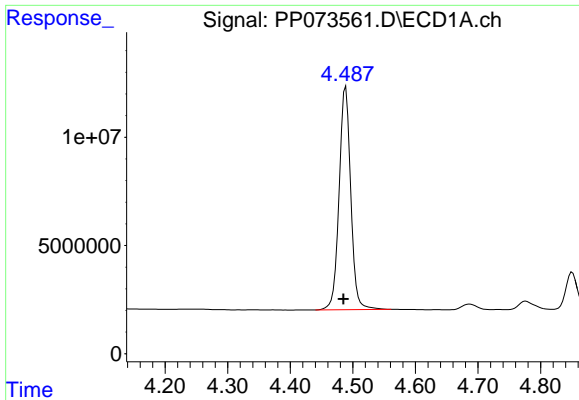
Data Path : Z:\pestpcbsrv\HPCHEM1\ECD_P\Data\PP070825\
 Data File : PP073561.D
 Signal(s) : Signal #1: ECD1A.ch Signal #2: ECD2B.ch
 Acq On : 07 Jul 2025 22:57
 Operator : YP\AJ
 Sample : AR1242ICC1000
 Misc :
 ALS Vial : 10 Sample Multiplier: 1

Instrument :
 ECD_P
 ClientSampleId :
 AR1242ICC1000

Integration File signal 1: autoint1.e
 Integration File signal 2: autoint2.e
 Quant Time: Jul 08 02:03:57 2025
 Quant Method : Z:\pestpcbsrv\HPCHEM1\ECD_P\methods\PP070825.M
 Quant Title : GC EXTRACTABLES
 QLast Update : Tue Jul 08 02:03:06 2025
 Response via : Initial Calibration
 Integrator: ChemStation

Volume Inj. : 2 µl
 Signal #1 Phase : ZB-MR1 Signal #2 Phase: ZB-MR2
 Signal #1 Info : 30Mx0.32mmx 0.50µ Signal #2 Info : 30M x 0.32mm x 0.25µm

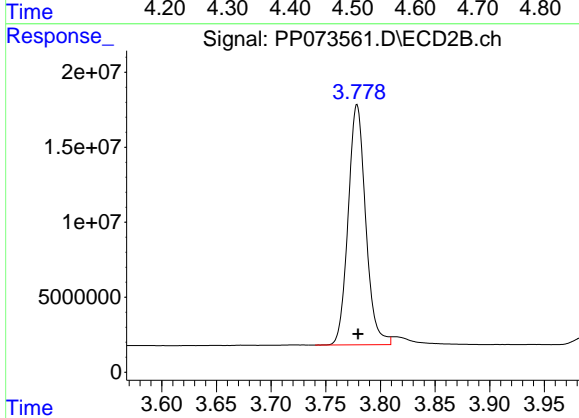




#1 Tetrachloro-m-xylene

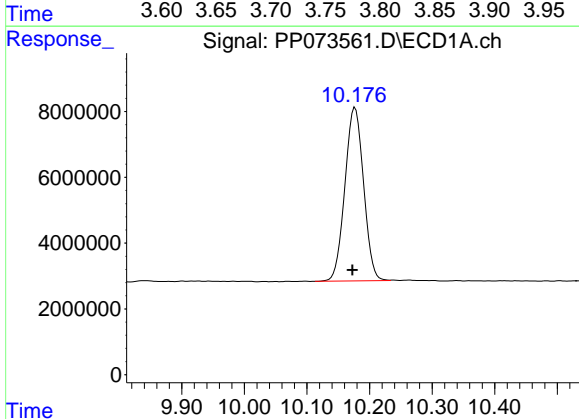
R.T.: 4.489 min
Delta R.T.: 0.004 min
Response: 133642467
Conc: 93.64 ng/ml

Instrument :
ECD_P
ClientSampleId :
AR1242ICC1000



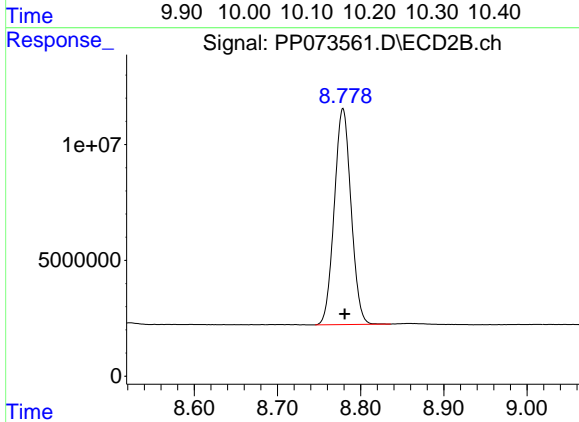
#1 Tetrachloro-m-xylene

R.T.: 3.779 min
Delta R.T.: 0.000 min
Response: 178724092
Conc: 94.39 ng/ml



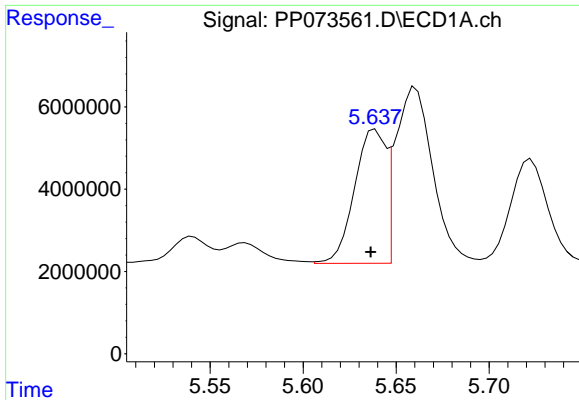
#2 Decachlorobiphenyl

R.T.: 10.177 min
Delta R.T.: 0.004 min
Response: 109570314
Conc: 95.73 ng/ml



#2 Decachlorobiphenyl

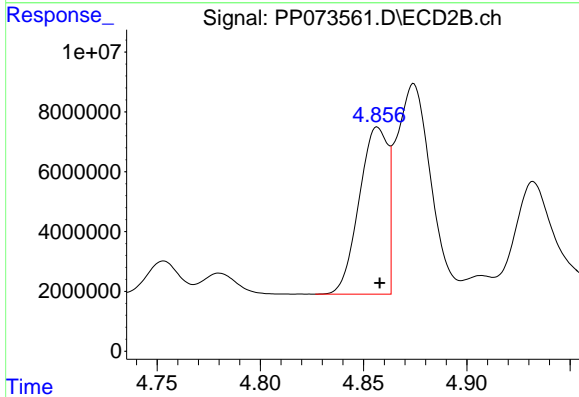
R.T.: 8.779 min
Delta R.T.: -0.002 min
Response: 130664248
Conc: 96.57 ng/ml



#16 AR-1242-1

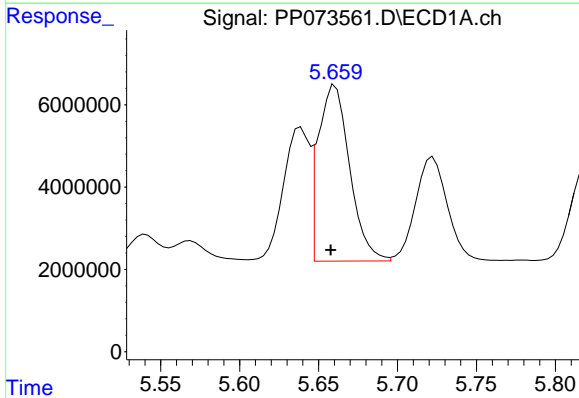
R.T.: 5.639 min
 Delta R.T.: 0.003 min
 Response: 37824570
 Conc: 927.89 ng/ml

Instrument :
 ECD_P
 ClientSampleId :
 AR1242ICC1000



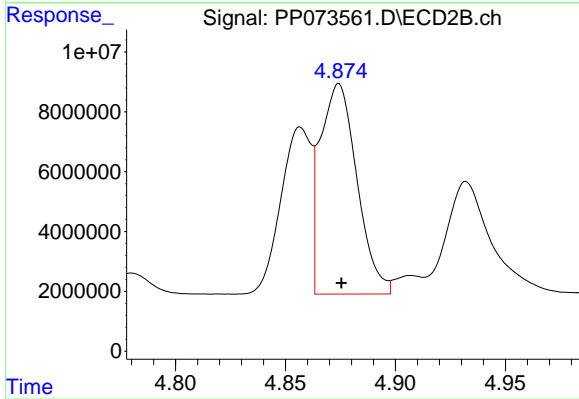
#16 AR-1242-1

R.T.: 4.857 min
 Delta R.T.: -0.001 min
 Response: 53636877
 Conc: 888.92 ng/ml



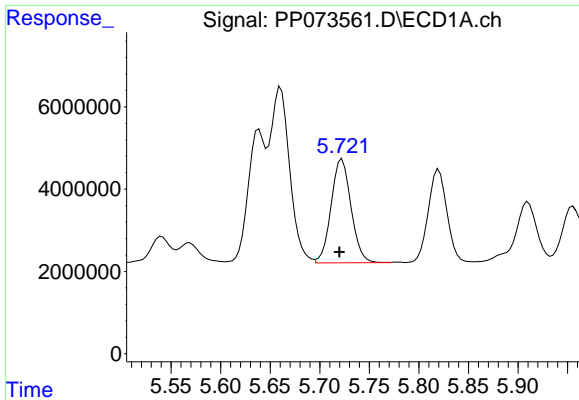
#17 AR-1242-2

R.T.: 5.661 min
 Delta R.T.: 0.003 min
 Response: 59433539
 Conc: 941.38 ng/ml



#17 AR-1242-2

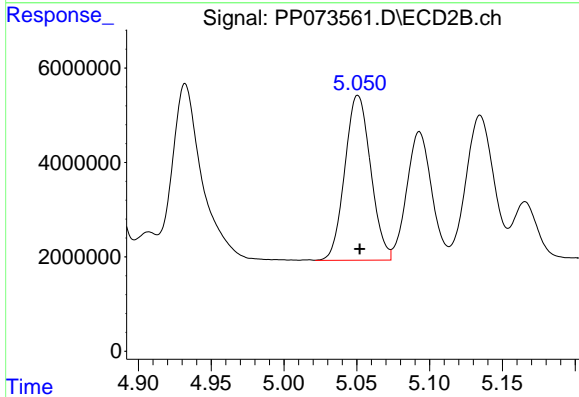
R.T.: 4.874 min
 Delta R.T.: -0.001 min
 Response: 81745742
 Conc: 919.24 ng/ml



#18 AR-1242-3

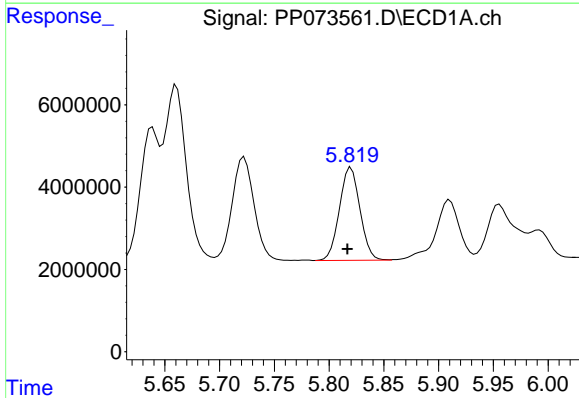
R.T.: 5.723 min
 Delta R.T.: 0.003 min
 Response: 35307728
 Conc: 927.51 ng/ml

Instrument :
 ECD_P
 ClientSampleId :
 AR1242ICC1000



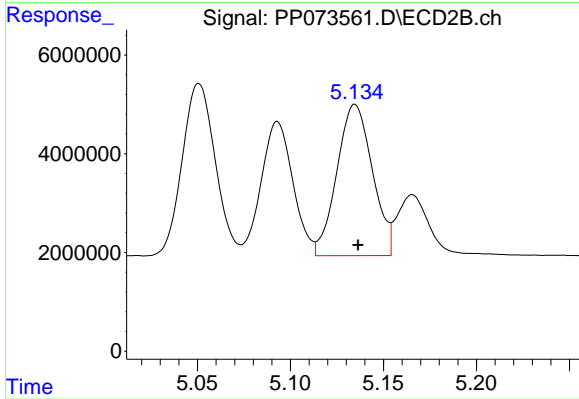
#18 AR-1242-3

R.T.: 5.051 min
 Delta R.T.: -0.001 min
 Response: 43191003
 Conc: 907.76 ng/ml



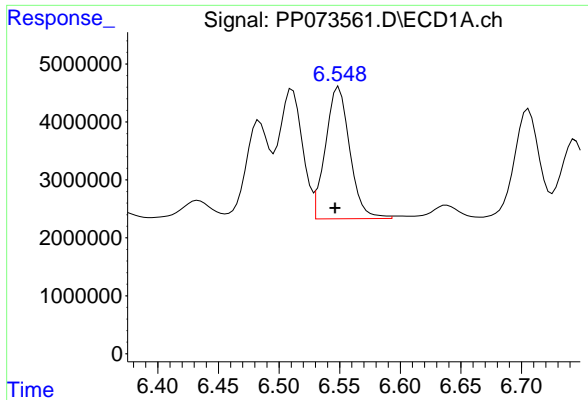
#19 AR-1242-4

R.T.: 5.820 min
 Delta R.T.: 0.003 min
 Response: 29431539
 Conc: 927.31 ng/ml



#19 AR-1242-4

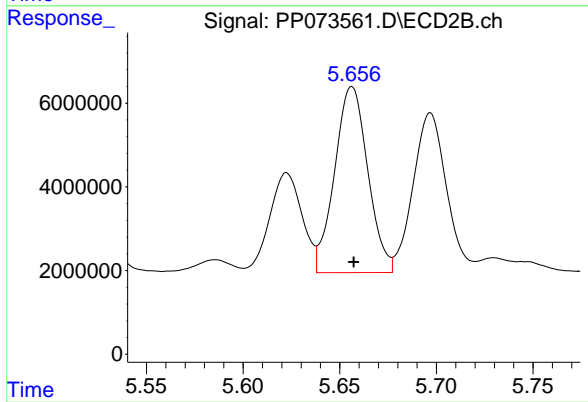
R.T.: 5.135 min
 Delta R.T.: -0.002 min
 Response: 40719317
 Conc: 902.53 ng/ml



#20 AR-1242-5

R.T.: 6.549 min
 Delta R.T.: 0.003 min
 Response: 31742412
 Conc: 951.70 ng/ml

Instrument :
 ECD_P
 ClientSampleId :
 AR1242ICC1000



#20 AR-1242-5

R.T.: 5.656 min
 Delta R.T.: 0.000 min
 Response: 53173633
 Conc: 931.77 ng/ml