

Data Path : Z:\pestpcbsrv\HPCHEM1\ECD\_P\Data\PP070825\  
 Data File : PP073562.D  
 Signal(s) : Signal #1: ECD1A.ch Signal #2: ECD2B.ch  
 Acq On : 07 Jul 2025 23:14  
 Operator : YP\AJ  
 Sample : AR1242ICC750  
 Misc :  
 ALS Vial : 11 Sample Multiplier: 1

**Instrument :**  
 ECD\_P  
**ClientSampleId :**  
 AR1242ICC750

Integration File signal 1: autoint1.e  
 Integration File signal 2: autoint2.e  
 Quant Time: Jul 08 02:04:21 2025  
 Quant Method : Z:\pestpcbsrv\HPCHEM1\ECD\_P\methods\PP070825.M  
 Quant Title : GC EXTRACTABLES  
 QLast Update : Tue Jul 08 02:03:06 2025  
 Response via : Initial Calibration  
 Integrator: ChemStation

Volume Inj. : 2 µl  
 Signal #1 Phase : ZB-MR1 Signal #2 Phase: ZB-MR2  
 Signal #1 Info : 30Mx0.32mmx 0.50µ Signal #2 Info : 30M x 0.32mm x 0.25µm

Compound	RT#1	RT#2	Resp#1	Resp#2	ng/ml	ng/ml
-----						
System Monitoring Compounds						
1) SA Tetrachlo...	4.487	3.779	101.2E6	134.0E6	70.925	70.781
2) SA Decachlor...	10.176	8.781	83819765	102.7E6	73.236	75.941
Target Compounds						
16) L4 AR-1242-1	5.637	4.858	28898659	42483367	708.926	704.072
17) L4 AR-1242-2	5.660	4.875	44240913	61742767	700.743	694.305
18) L4 AR-1242-3	5.721	5.051	26874126	33146056	705.967	696.639
19) L4 AR-1242-4	5.819	5.135	22658657	31400295	713.915	695.975
20) L4 AR-1242-5	6.548	5.657	23721271	40207089	711.214	704.555
-----						

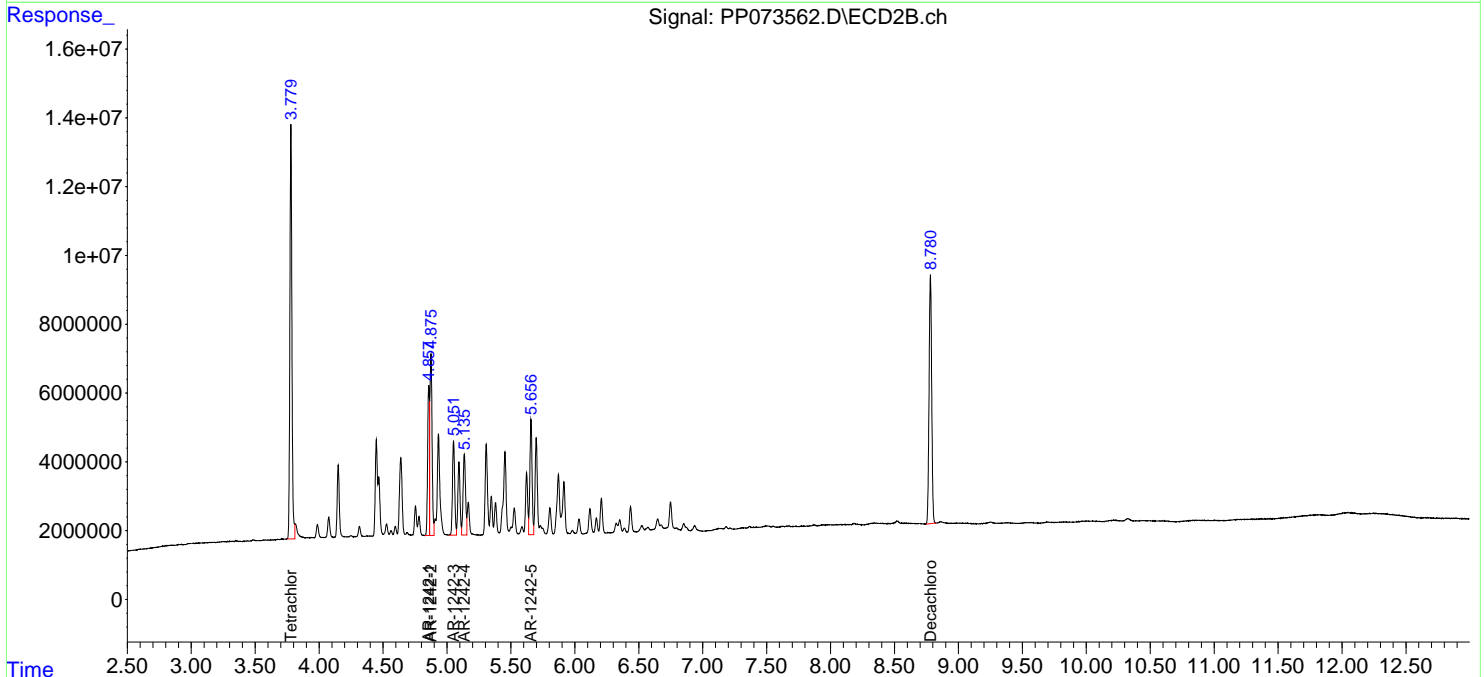
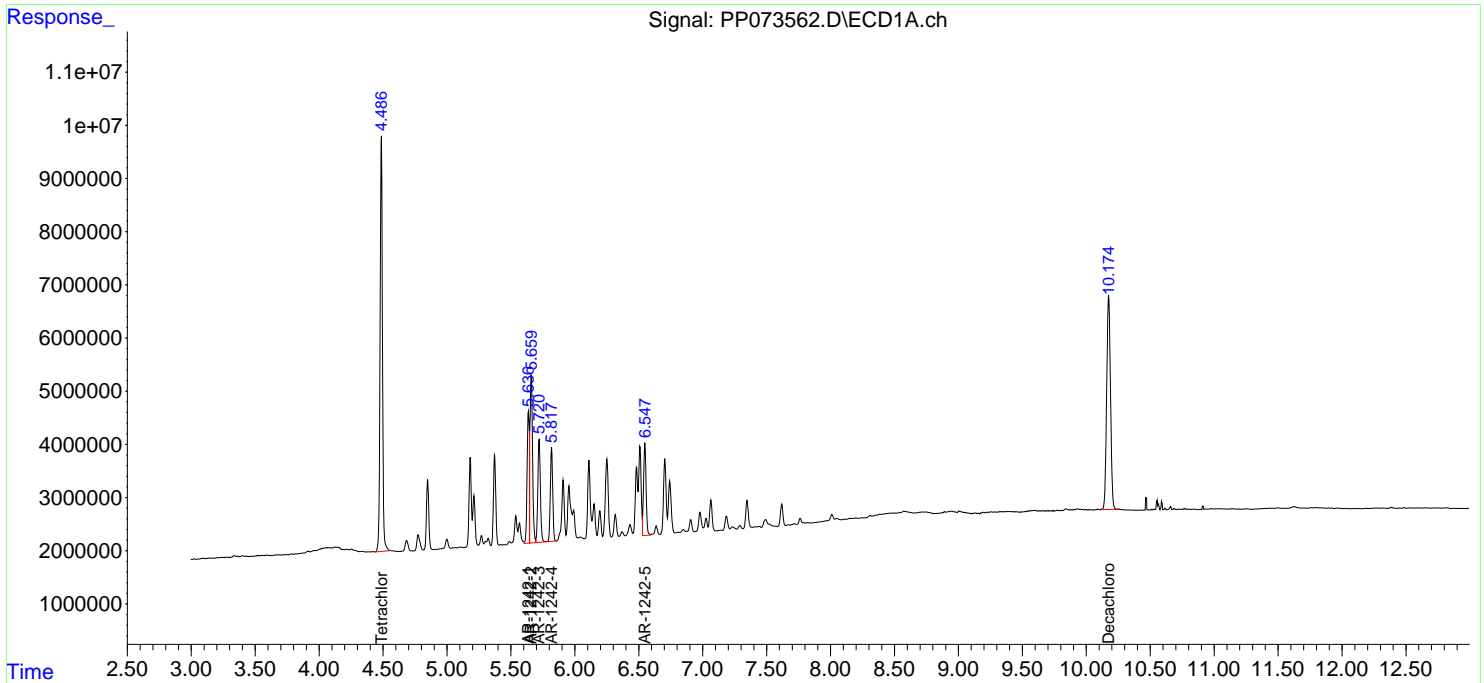
(f)=RT Delta > 1/2 Window (#)=Amounts differ by > 25% (m)=manual int.

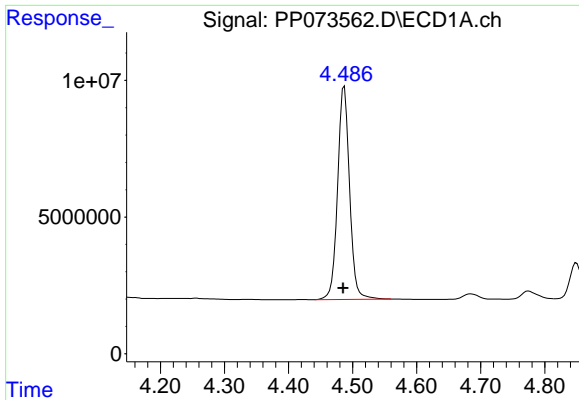
Data Path : Z:\pestpcbsrv\HPCHEM1\ECD\_P\Data\PP070825\  
 Data File : PP073562.D  
 Signal(s) : Signal #1: ECD1A.ch Signal #2: ECD2B.ch  
 Acq On : 07 Jul 2025 23:14  
 Operator : YP\AJ  
 Sample : AR1242ICC750  
 Misc :  
 ALS Vial : 11 Sample Multiplier: 1

Instrument :  
 ECD\_P  
 ClientSampleId :  
 AR1242ICC750

Integration File signal 1: autoint1.e  
 Integration File signal 2: autoint2.e  
 Quant Time: Jul 08 02:04:21 2025  
 Quant Method : Z:\pestpcbsrv\HPCHEM1\ECD\_P\methods\PP070825.M  
 Quant Title : GC EXTRACTABLES  
 QLast Update : Tue Jul 08 02:03:06 2025  
 Response via : Initial Calibration  
 Integrator: ChemStation

Volume Inj. : 2 µl  
 Signal #1 Phase : ZB-MR1 Signal #2 Phase: ZB-MR2  
 Signal #1 Info : 30Mx0.32mmx 0.50µ Signal #2 Info : 30M x 0.32mm x 0.25µm

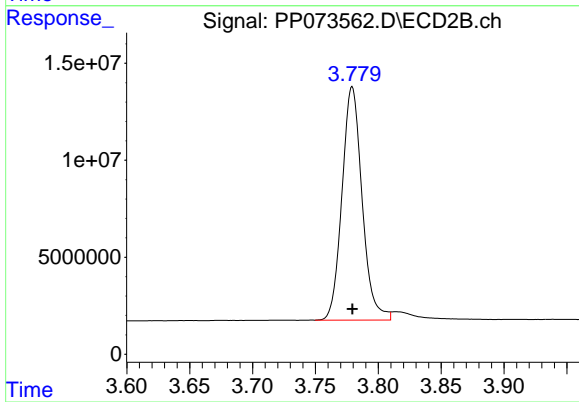




#1 Tetrachloro-m-xylene

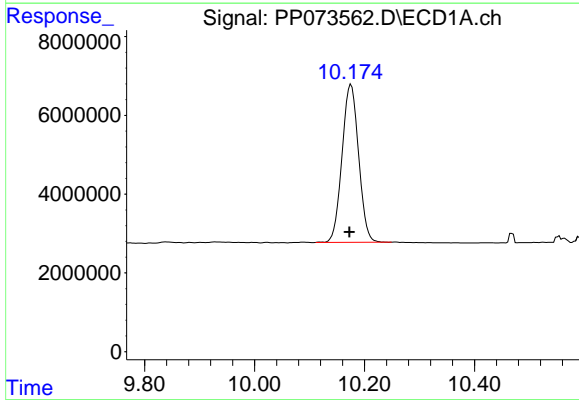
R.T.: 4.487 min  
Delta R.T.: 0.002 min  
Response: 101224890  
Conc: 70.92 ng/ml

Instrument :  
ECD\_P  
ClientSampleId :  
AR1242ICC750



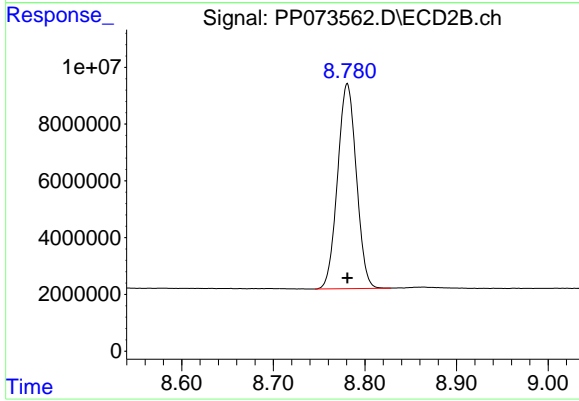
#1 Tetrachloro-m-xylene

R.T.: 3.779 min  
Delta R.T.: 0.000 min  
Response: 134020280  
Conc: 70.78 ng/ml



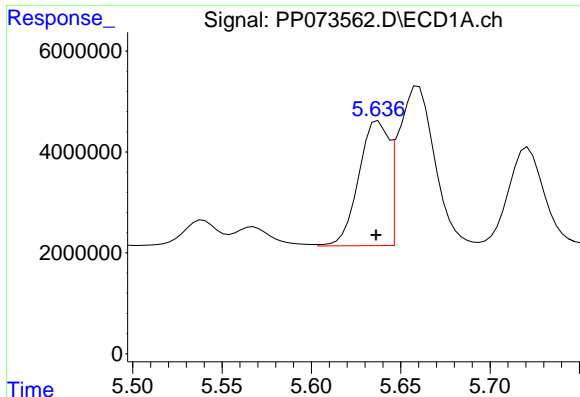
#2 Decachlorobiphenyl

R.T.: 10.176 min  
Delta R.T.: 0.003 min  
Response: 83819765  
Conc: 73.24 ng/ml



#2 Decachlorobiphenyl

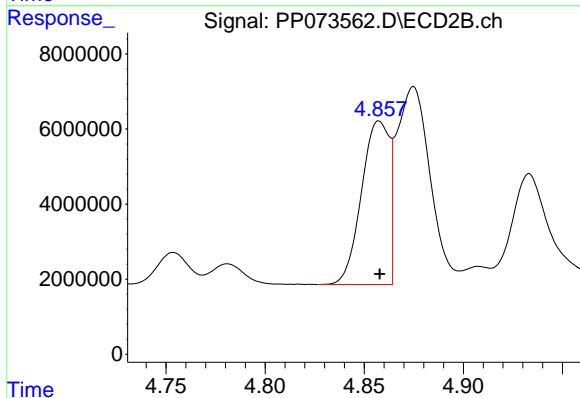
R.T.: 8.781 min  
Delta R.T.: 0.000 min  
Response: 102748919  
Conc: 75.94 ng/ml



#16 AR-1242-1

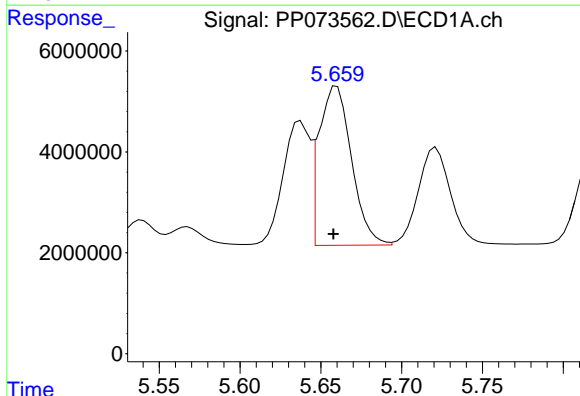
R.T.: 5.637 min  
 Delta R.T.: 0.001 min  
 Response: 28898659  
 Conc: 708.93 ng/ml

Instrument :  
 ECD\_P  
 ClientSampleId :  
 AR1242ICC750



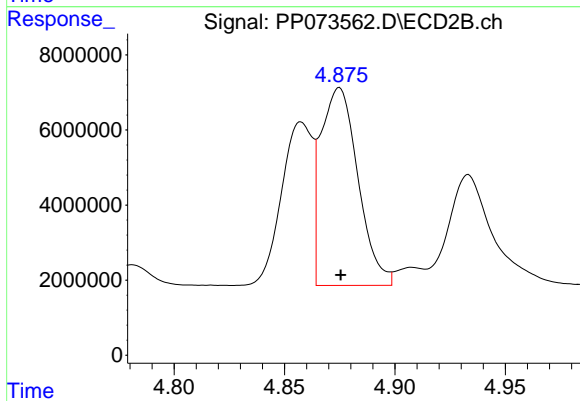
#16 AR-1242-1

R.T.: 4.858 min  
 Delta R.T.: 0.000 min  
 Response: 42483367  
 Conc: 704.07 ng/ml



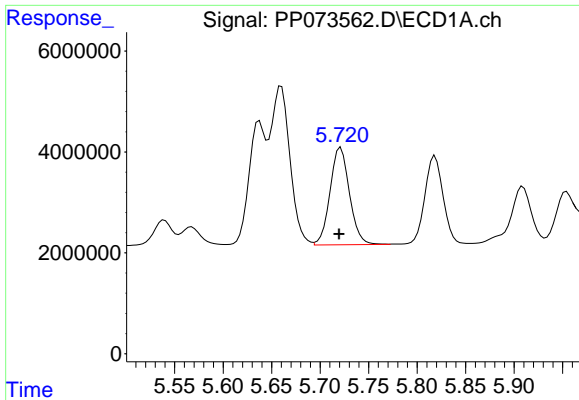
#17 AR-1242-2

R.T.: 5.660 min  
 Delta R.T.: 0.002 min  
 Response: 44240913  
 Conc: 700.74 ng/ml



#17 AR-1242-2

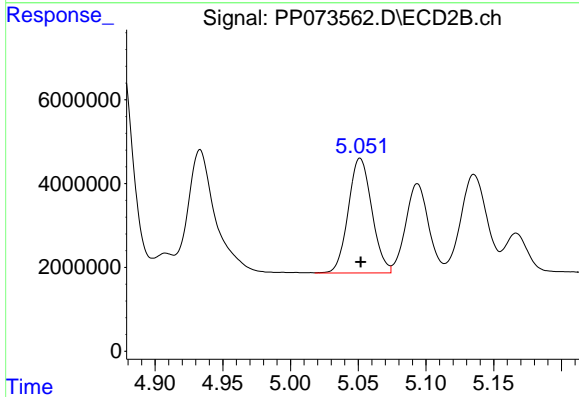
R.T.: 4.875 min  
 Delta R.T.: 0.000 min  
 Response: 61742767  
 Conc: 694.31 ng/ml



#18 AR-1242-3

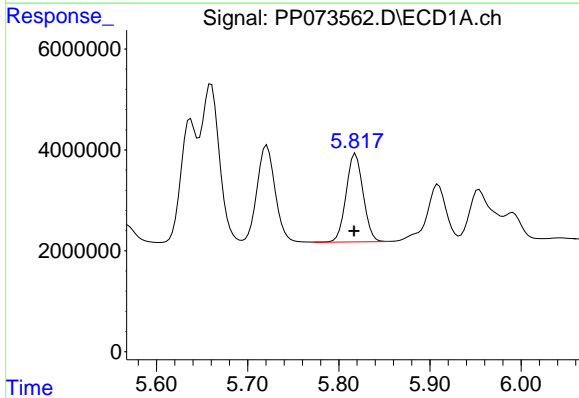
R.T.: 5.721 min  
 Delta R.T.: 0.002 min  
 Response: 26874126  
 Conc: 705.97 ng/ml

Instrument :  
 ECD\_P  
 ClientSampleId :  
 AR1242ICC750



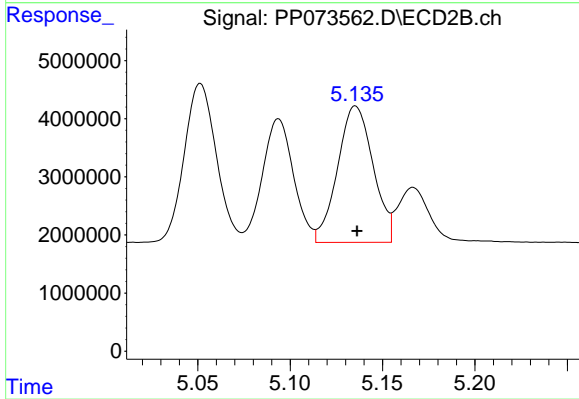
#18 AR-1242-3

R.T.: 5.051 min  
 Delta R.T.: 0.000 min  
 Response: 33146056  
 Conc: 696.64 ng/ml



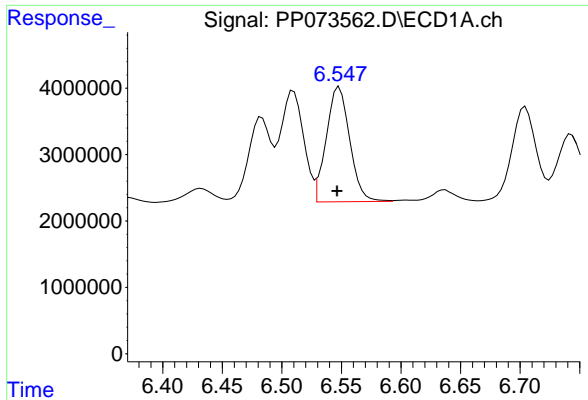
#19 AR-1242-4

R.T.: 5.819 min  
 Delta R.T.: 0.002 min  
 Response: 22658657  
 Conc: 713.91 ng/ml



#19 AR-1242-4

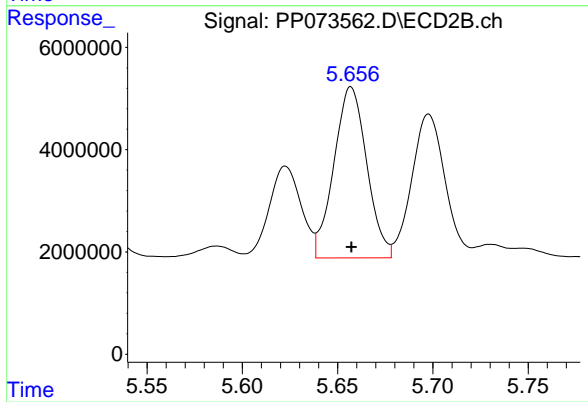
R.T.: 5.135 min  
 Delta R.T.: 0.000 min  
 Response: 31400295  
 Conc: 695.97 ng/ml



#20 AR-1242-5

R.T.: 6.548 min  
Delta R.T.: 0.002 min  
Response: 23721271  
Conc: 711.21 ng/ml

Instrument :  
ECD\_P  
ClientSampleId :  
AR1242ICC750



#20 AR-1242-5

R.T.: 5.657 min  
Delta R.T.: 0.000 min  
Response: 40207089  
Conc: 704.55 ng/ml