

Data Path : Z:\pestpcbsrv\HPCHEM1\ECD_P\Data\PP070825\
 Data File : PP073564.D
 Signal(s) : Signal #1: ECD1A.ch Signal #2: ECD2B.ch
 Acq On : 07 Jul 2025 23:46
 Operator : YP\AJ
 Sample : AR1242ICC250
 Misc :
 ALS Vial : 13 Sample Multiplier: 1

Instrument :
 ECD_P
ClientSampleId :
 AR1242ICC250

Integration File signal 1: autoint1.e
 Integration File signal 2: autoint2.e
 Quant Time: Jul 08 02:05:02 2025
 Quant Method : Z:\pestpcbsrv\HPCHEM1\ECD_P\methods\PP070825.M
 Quant Title : GC EXTRACTABLES
 QLast Update : Tue Jul 08 02:03:06 2025
 Response via : Initial Calibration
 Integrator: ChemStation

Volume Inj. : 2 µl
 Signal #1 Phase : ZB-MR1 Signal #2 Phase: ZB-MR2
 Signal #1 Info : 30Mx0.32mmx 0.50µ Signal #2 Info : 30M x 0.32mm x 0.25µm

Compound	RT#1	RT#2	Resp#1	Resp#2	ng/ml	ng/ml

System Monitoring Compounds						
1) SA Tetrachlo...	4.488	3.779	35973232	49943783	25.205	26.377
2) SA Decachlor...	10.176	8.781	28867365	35186918	25.222	26.006
Target Compounds						
16) L4 AR-1242-1	5.638	4.857	10586937	15530210	259.713	257.381
17) L4 AR-1242-2	5.660	4.875	16251959	22939126	257.419	257.953
18) L4 AR-1242-3	5.722	5.051	9827935	12210872	258.174	256.639
19) L4 AR-1242-4	5.819	5.135	8068875	11715170	254.229	259.662
20) L4 AR-1242-5	6.550	5.656	8772262	14646179	263.011	256.647

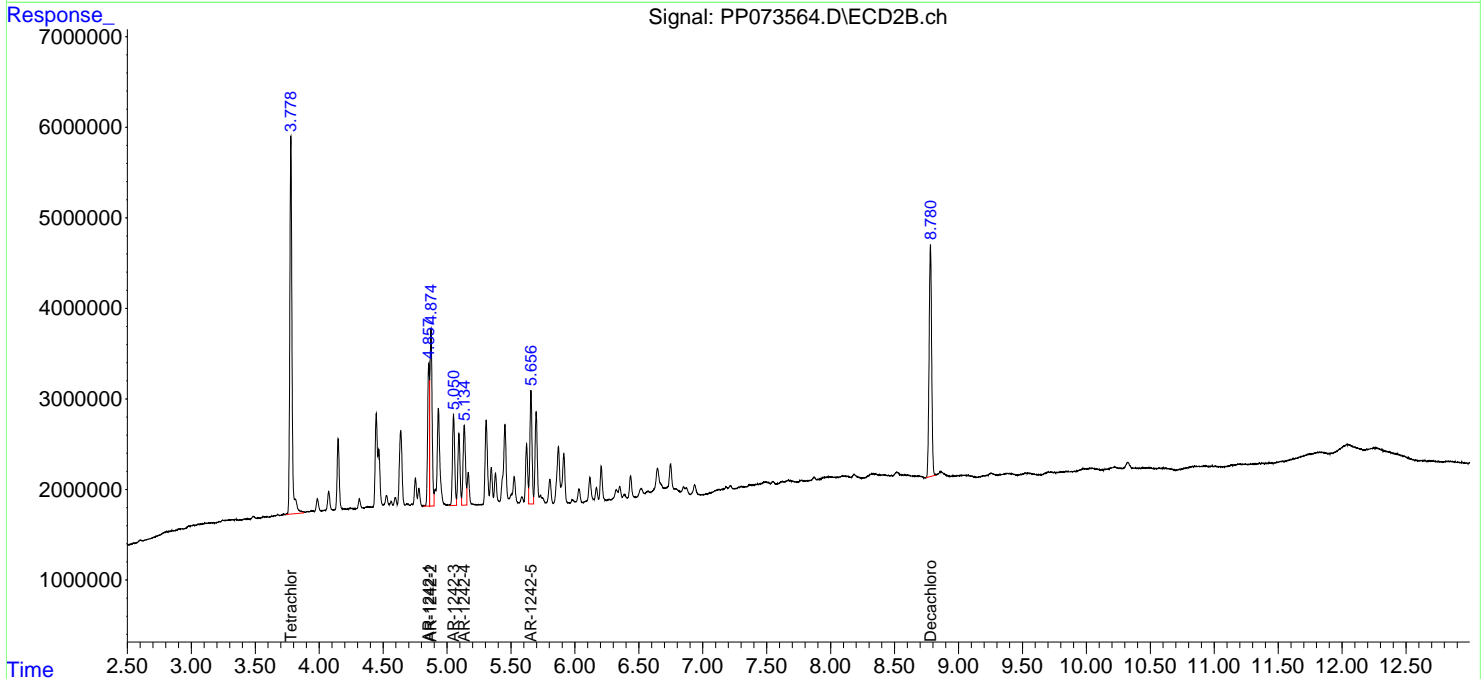
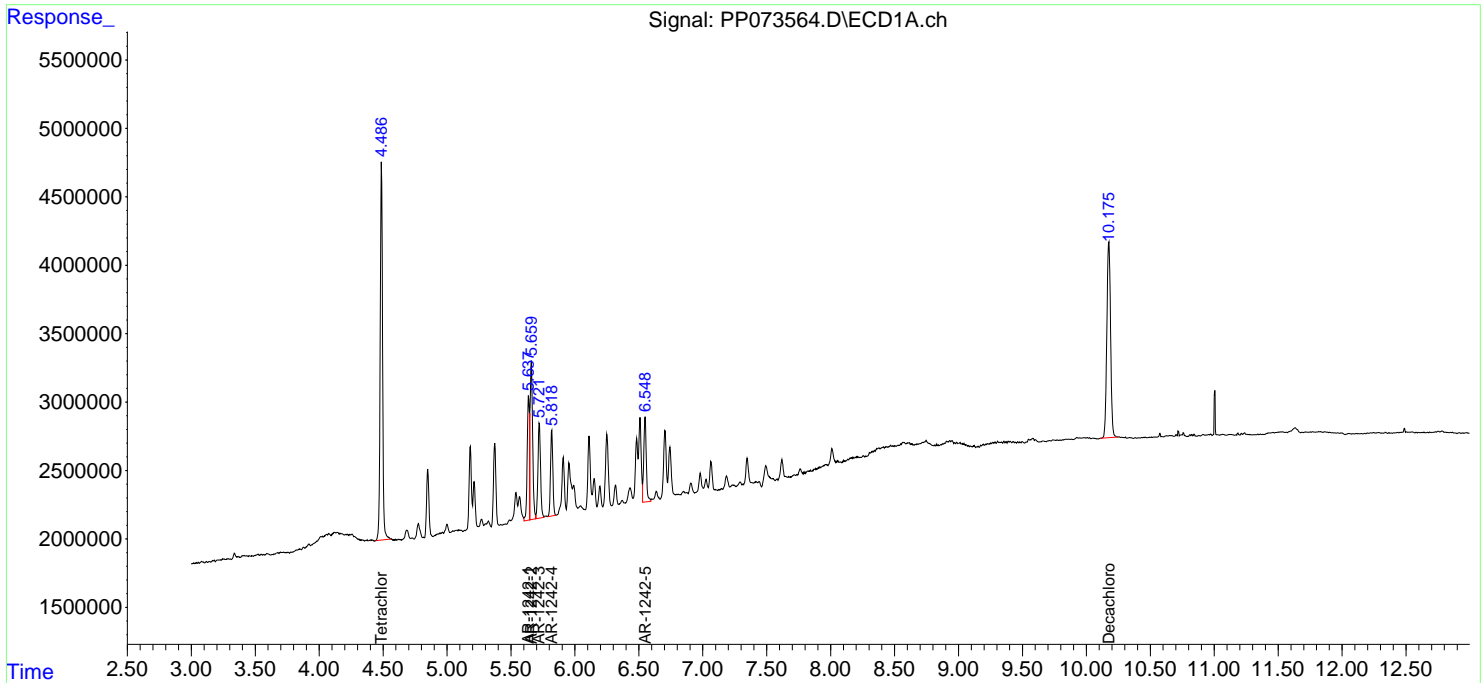
(f)=RT Delta > 1/2 Window (#)=Amounts differ by > 25% (m)=manual int.

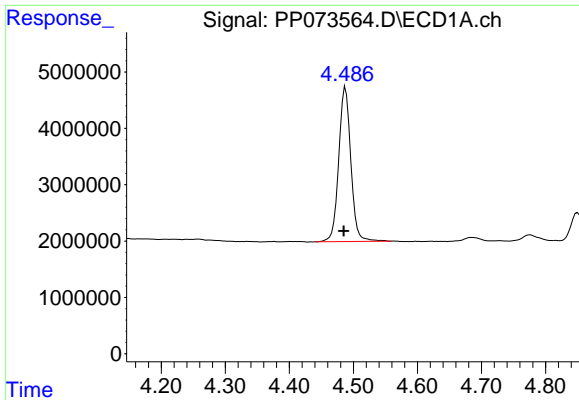
Data Path : Z:\pestpcbsrv\HPCHEM1\ECD_P\Data\PP070825\
 Data File : PP073564.D
 Signal(s) : Signal #1: ECD1A.ch Signal #2: ECD2B.ch
 Acq On : 07 Jul 2025 23:46
 Operator : YP\AJ
 Sample : AR1242ICC250
 Misc :
 ALS Vial : 13 Sample Multiplier: 1

Instrument :
 ECD_P
 ClientSampleId :
 AR1242ICC250

Integration File signal 1: autoint1.e
 Integration File signal 2: autoint2.e
 Quant Time: Jul 08 02:05:02 2025
 Quant Method : Z:\pestpcbsrv\HPCHEM1\ECD_P\methods\PP070825.M
 Quant Title : GC EXTRACTABLES
 QLast Update : Tue Jul 08 02:03:06 2025
 Response via : Initial Calibration
 Integrator: ChemStation

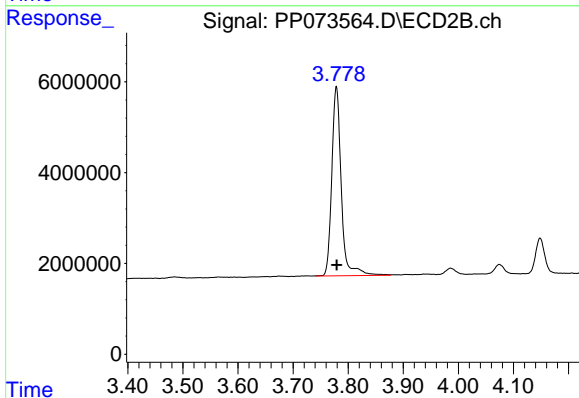
Volume Inj. : 2 µl
 Signal #1 Phase : ZB-MR1 Signal #2 Phase: ZB-MR2
 Signal #1 Info : 30Mx0.32mmx 0.50µ Signal #2 Info : 30M x 0.32mm x 0.25µm



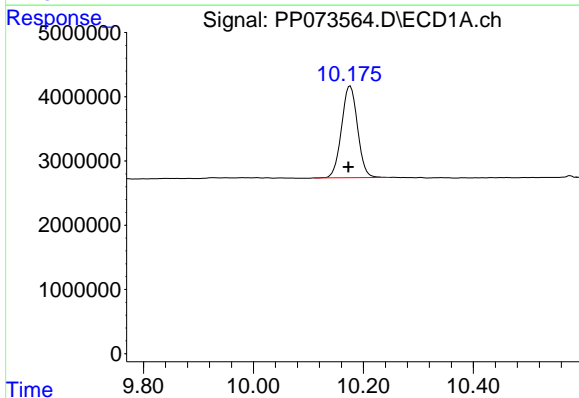


#1 Tetrachloro-m-xylene
 R.T.: 4.488 min
 Delta R.T.: 0.003 min
 Response: 35973232
 Conc: 25.21 ng/ml

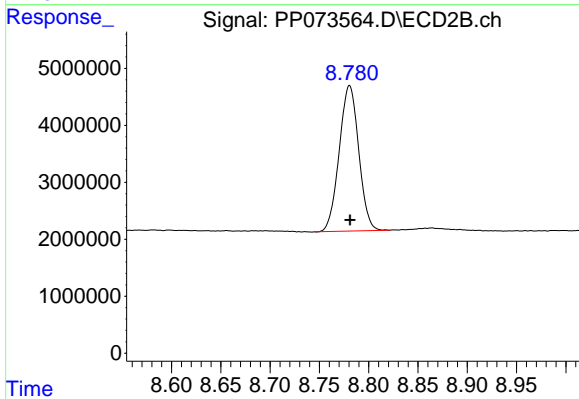
Instrument :
 ECD_P
 ClientSampleId :
 AR1242ICC250



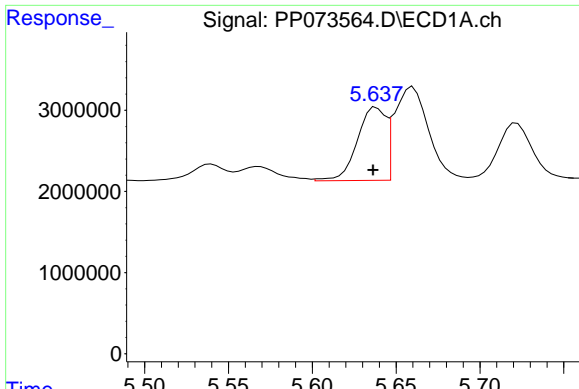
#1 Tetrachloro-m-xylene
 R.T.: 3.779 min
 Delta R.T.: 0.000 min
 Response: 49943783
 Conc: 26.38 ng/ml



#2 Decachlorobiphenyl
 R.T.: 10.176 min
 Delta R.T.: 0.003 min
 Response: 28867365
 Conc: 25.22 ng/ml



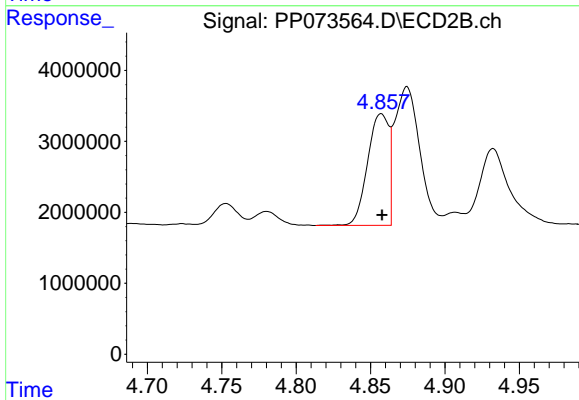
#2 Decachlorobiphenyl
 R.T.: 8.781 min
 Delta R.T.: 0.000 min
 Response: 35186918
 Conc: 26.01 ng/ml



#16 AR-1242-1

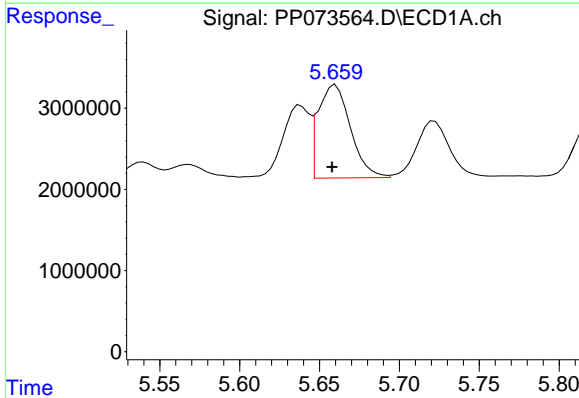
R.T.: 5.638 min
 Delta R.T.: 0.002 min
 Response: 10586937
 Conc: 259.71 ng/ml

Instrument :
 ECD_P
 ClientSampleId :
 AR1242ICC250



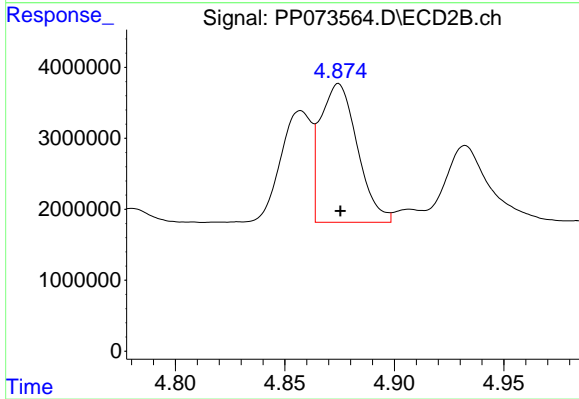
#16 AR-1242-1

R.T.: 4.857 min
 Delta R.T.: 0.000 min
 Response: 15530210
 Conc: 257.38 ng/ml



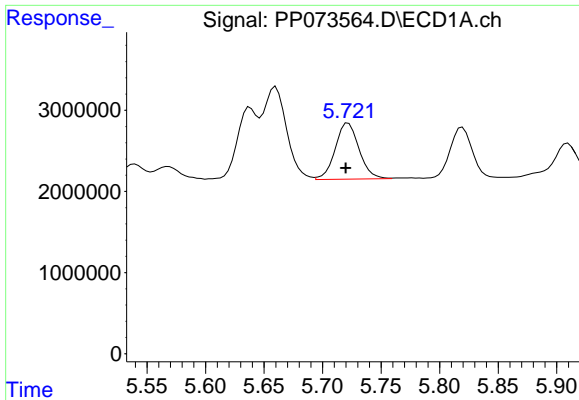
#17 AR-1242-2

R.T.: 5.660 min
 Delta R.T.: 0.002 min
 Response: 16251959
 Conc: 257.42 ng/ml



#17 AR-1242-2

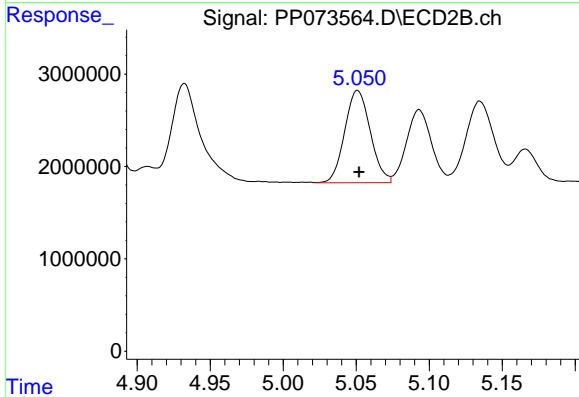
R.T.: 4.875 min
 Delta R.T.: 0.000 min
 Response: 22939126
 Conc: 257.95 ng/ml



#18 AR-1242-3

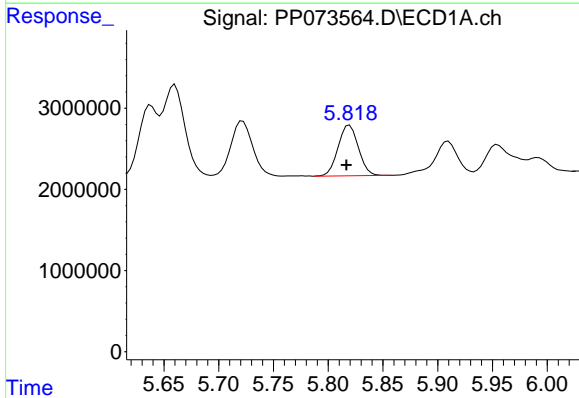
R.T.: 5.722 min
 Delta R.T.: 0.002 min
 Response: 9827935
 Conc: 258.17 ng/ml

Instrument :
 ECD_P
 ClientSampleId :
 AR1242ICC250



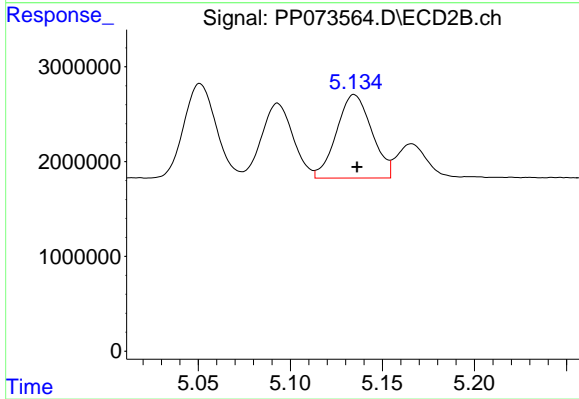
#18 AR-1242-3

R.T.: 5.051 min
 Delta R.T.: -0.001 min
 Response: 12210872
 Conc: 256.64 ng/ml



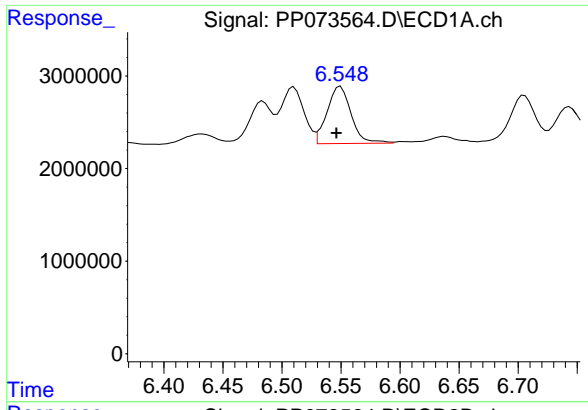
#19 AR-1242-4

R.T.: 5.819 min
 Delta R.T.: 0.003 min
 Response: 8068875
 Conc: 254.23 ng/ml



#19 AR-1242-4

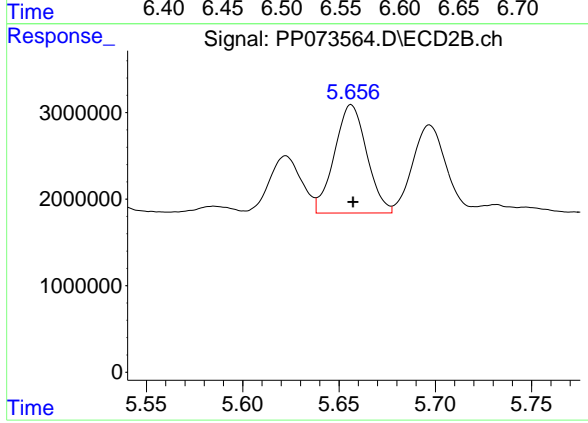
R.T.: 5.135 min
 Delta R.T.: -0.002 min
 Response: 11715170
 Conc: 259.66 ng/ml



#20 AR-1242-5

R.T.: 6.550 min
Delta R.T.: 0.003 min
Response: 8772262
Conc: 263.01 ng/ml

Instrument :
ECD_P
ClientSampleId :
AR1242ICC250



#20 AR-1242-5

R.T.: 5.656 min
Delta R.T.: 0.000 min
Response: 14646179
Conc: 256.65 ng/ml