

Data Path : Z:\pestpcbsrv\HPCHEM1\ECD_P\Data\PP070825\
 Data File : PP073565.D
 Signal(s) : Signal #1: ECD1A.ch Signal #2: ECD2B.ch
 Acq On : 08 Jul 2025 00:03
 Operator : YP\AJ
 Sample : AR1242IC050
 Misc :
 ALS Vial : 14 Sample Multiplier: 1

Instrument :
 ECD_P
 ClientSampleId :
 AR1242IC050

Integration File signal 1: autoint1.e
 Integration File signal 2: autoint2.e
 Quant Time: Jul 08 02:05:27 2025
 Quant Method : Z:\pestpcbsrv\HPCHEM1\ECD_P\methods\PP070825.M
 Quant Title : GC EXTRACTABLES
 QLast Update : Tue Jul 08 02:03:06 2025
 Response via : Initial Calibration
 Integrator: ChemStation

Volume Inj. : 2 µl
 Signal #1 Phase : ZB-MR1 Signal #2 Phase: ZB-MR2
 Signal #1 Info : 30Mx0.32mmx 0.50µ Signal #2 Info : 30M x 0.32mm x 0.25µm

Compound	RT#1	RT#2	Resp#1	Resp#2	ng/ml	ng/ml

System Monitoring Compounds						
1) SA Tetrachlo...	4.487	3.779	6312847	8330986	4.423	4.400
2) SA Decachlor...	10.173	8.780	4963140	5974096	4.336	4.415
Target Compounds						
16) L4 AR-1242-1	5.637	4.857	2418928	2804106	59.340	46.472
17) L4 AR-1242-2	5.658	4.875	3555771	4375880	56.321	49.207
18) L4 AR-1242-3	5.721	5.052	2548756	2296207	66.954	48.260 #
19) L4 AR-1242-4	5.818	5.136	1851147	2337623	58.325	51.812
20) L4 AR-1242-5	6.547	5.657	2626667	2688857	78.753	47.117 #

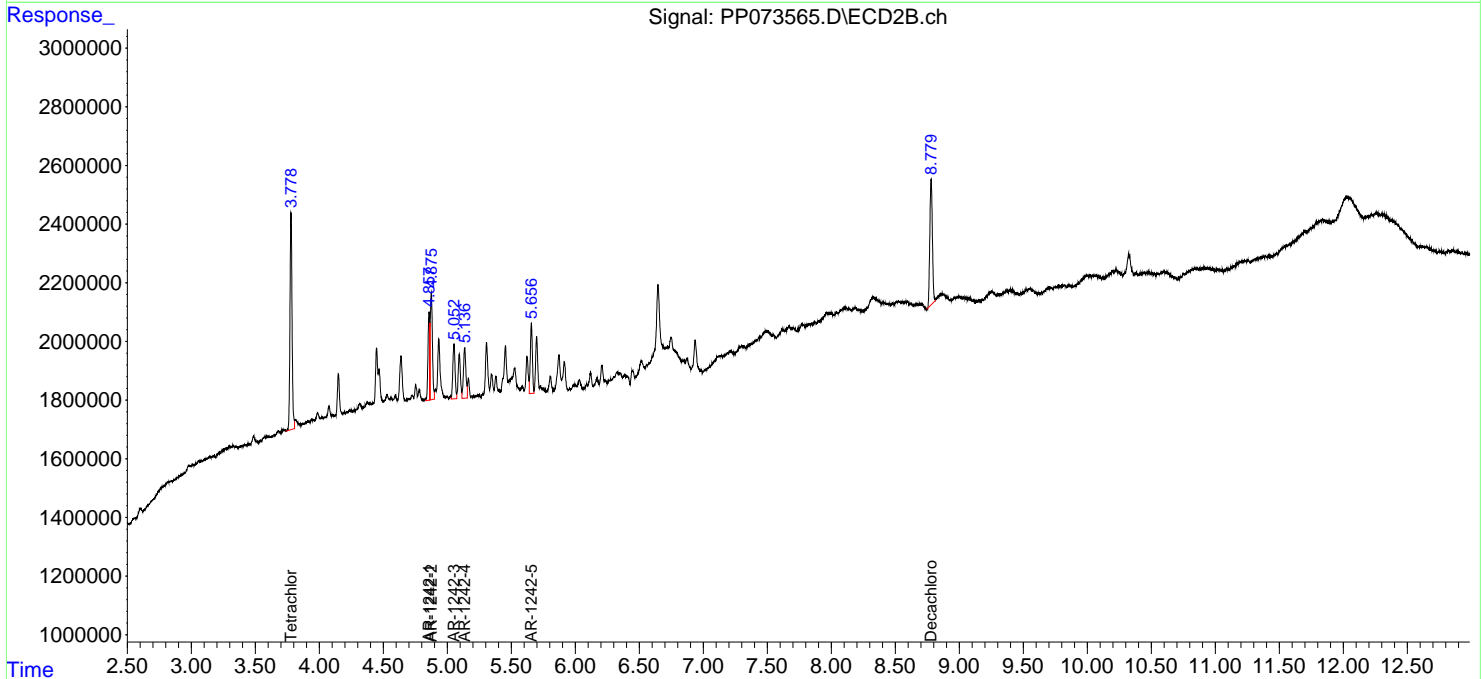
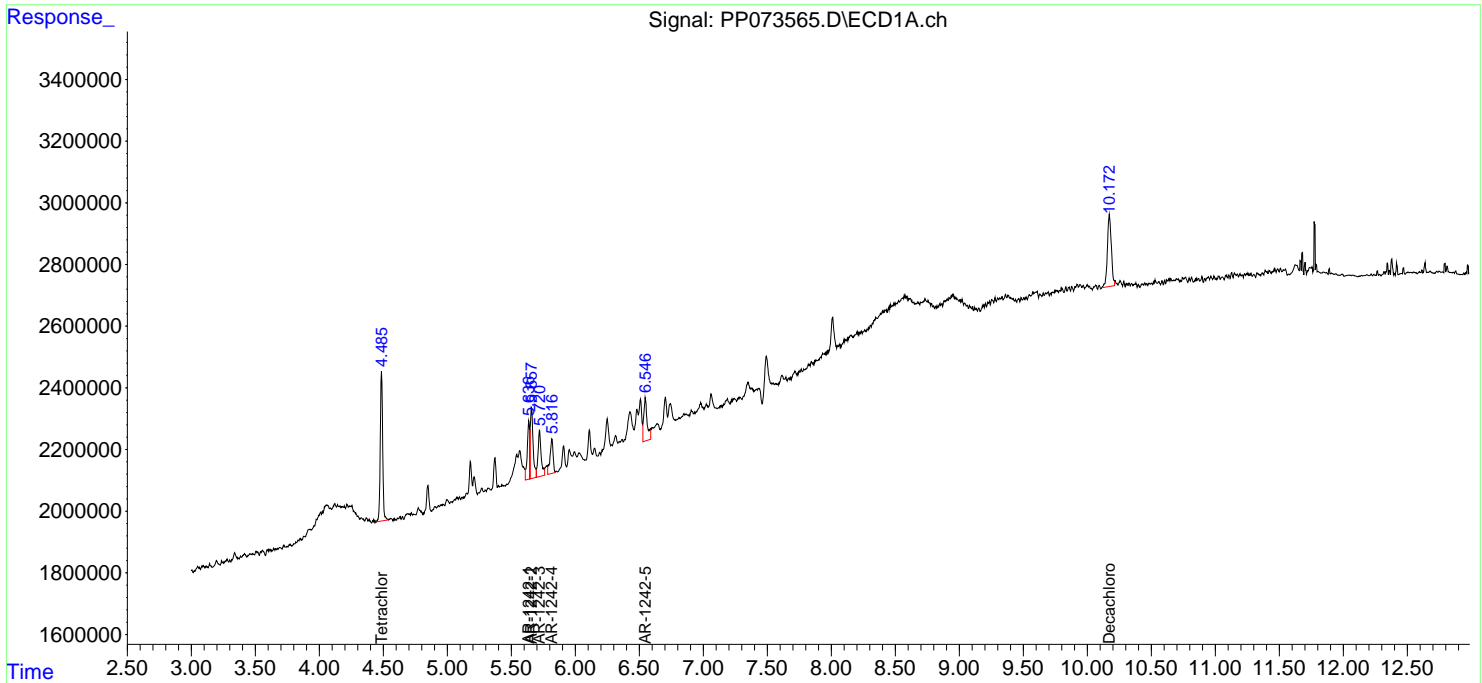
(f)=RT Delta > 1/2 Window (#)=Amounts differ by > 25% (m)=manual int.

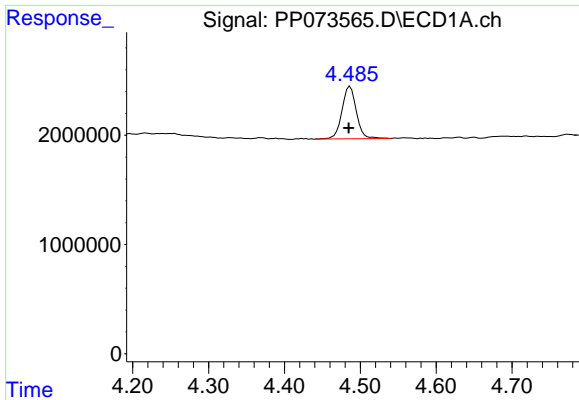
Data Path : Z:\pestpcbsrv\HPCHEM1\ECD_P\Data\PP070825\
 Data File : PP073565.D
 Signal(s) : Signal #1: ECD1A.ch Signal #2: ECD2B.ch
 Acq On : 08 Jul 2025 00:03
 Operator : YP\AJ
 Sample : AR1242IC050
 Misc :
 ALS Vial : 14 Sample Multiplier: 1

Instrument :
 ECD_P
ClientSampleId :
 AR1242IC050

Integration File signal 1: autoint1.e
 Integration File signal 2: autoint2.e
 Quant Time: Jul 08 02:05:27 2025
 Quant Method : Z:\pestpcbsrv\HPCHEM1\ECD_P\methods\PP070825.M
 Quant Title : GC EXTRACTABLES
 QLast Update : Tue Jul 08 02:03:06 2025
 Response via : Initial Calibration
 Integrator: ChemStation

Volume Inj. : 2 µl
 Signal #1 Phase : ZB-MR1 Signal #2 Phase: ZB-MR2
 Signal #1 Info : 30Mx0.32mmx 0.50µ Signal #2 Info : 30M x 0.32mm x 0.25µm

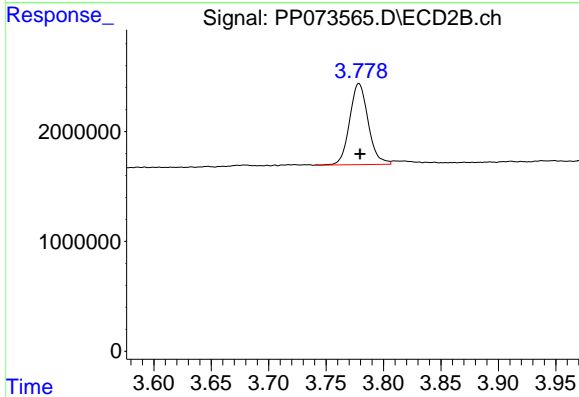




#1 Tetrachloro-m-xylene

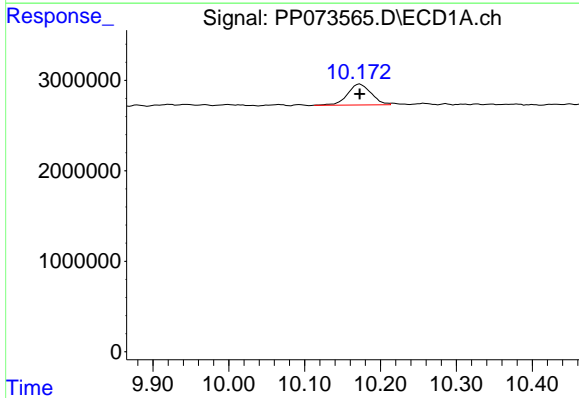
R.T.: 4.487 min
 Delta R.T.: 0.002 min
 Response: 6312847
 Conc: 4.42 ng/ml

Instrument :
 ECD_P
 ClientSampleId :
 AR1242IC050



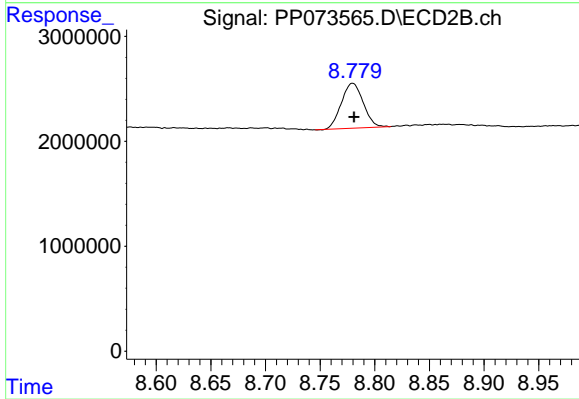
#1 Tetrachloro-m-xylene

R.T.: 3.779 min
 Delta R.T.: 0.000 min
 Response: 8330986
 Conc: 4.40 ng/ml



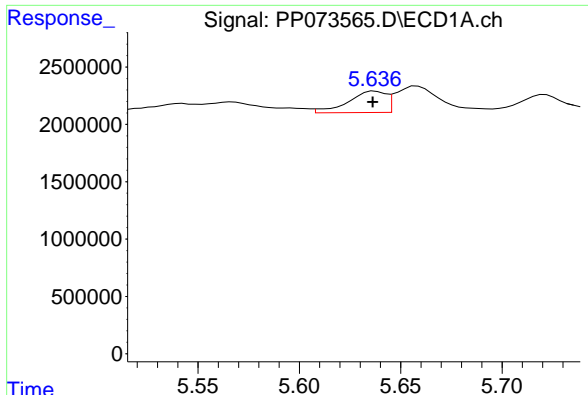
#2 Decachlorobiphenyl

R.T.: 10.173 min
 Delta R.T.: 0.000 min
 Response: 4963140
 Conc: 4.34 ng/ml



#2 Decachlorobiphenyl

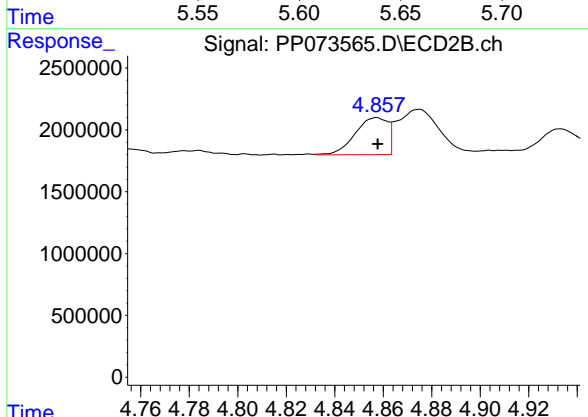
R.T.: 8.780 min
 Delta R.T.: -0.001 min
 Response: 5974096
 Conc: 4.42 ng/ml



#16 AR-1242-1

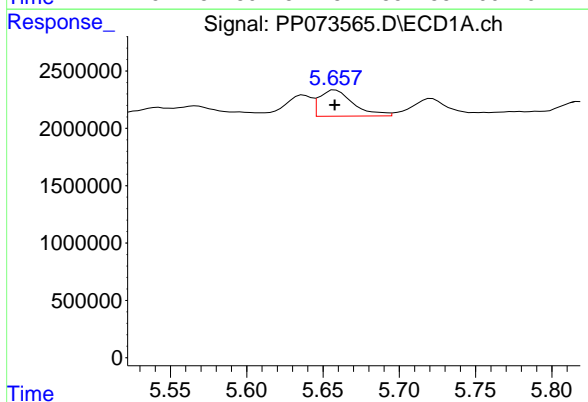
R.T.: 5.637 min
 Delta R.T.: 0.001 min
 Response: 2418928
 Conc: 59.34 ng/ml

Instrument :
 ECD_P
 ClientSampleId :
 AR1242ICC050



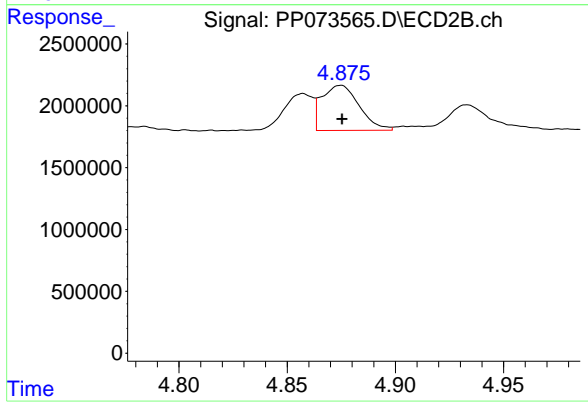
#16 AR-1242-1

R.T.: 4.857 min
 Delta R.T.: 0.000 min
 Response: 2804106
 Conc: 46.47 ng/ml



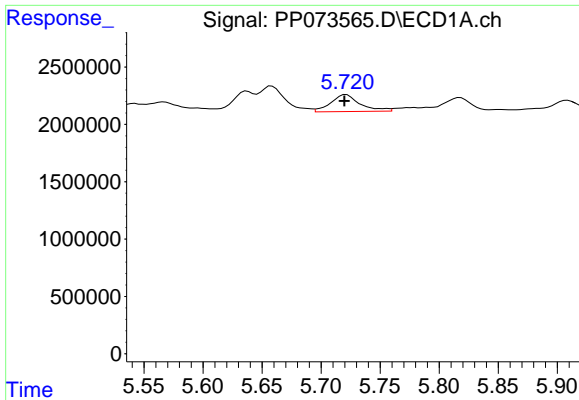
#17 AR-1242-2

R.T.: 5.658 min
 Delta R.T.: 0.000 min
 Response: 3555771
 Conc: 56.32 ng/ml



#17 AR-1242-2

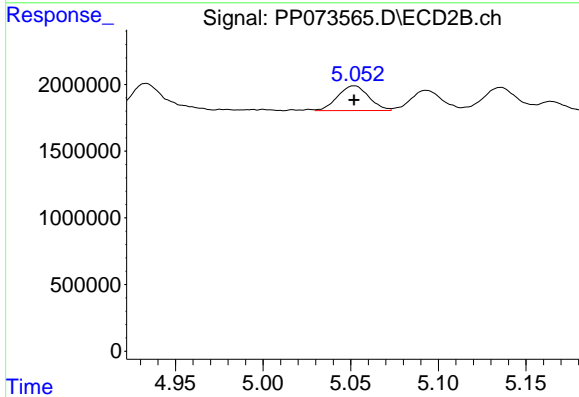
R.T.: 4.875 min
 Delta R.T.: 0.000 min
 Response: 4375880
 Conc: 49.21 ng/ml



#18 AR-1242-3

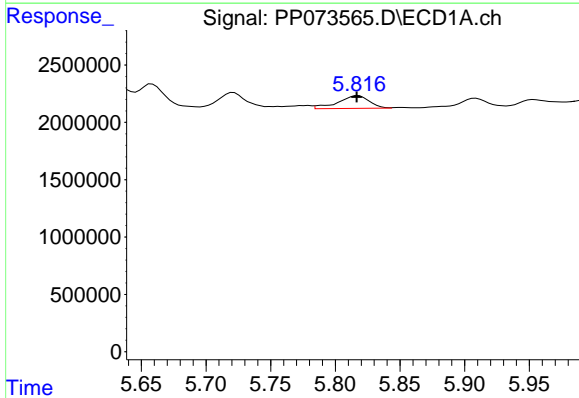
R.T.: 5.721 min
 Delta R.T.: 0.002 min
 Response: 2548756
 Conc: 66.95 ng/ml

Instrument :
 ECD_P
 ClientSampleId :
 AR1242IC050



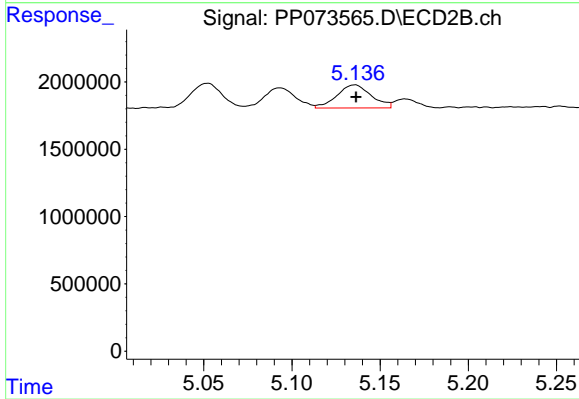
#18 AR-1242-3

R.T.: 5.052 min
 Delta R.T.: 0.000 min
 Response: 2296207
 Conc: 48.26 ng/ml



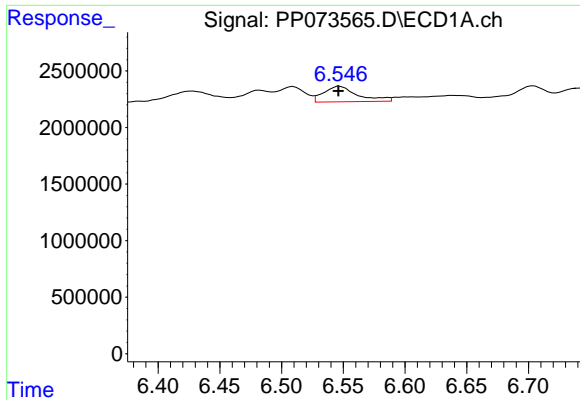
#19 AR-1242-4

R.T.: 5.818 min
 Delta R.T.: 0.001 min
 Response: 1851147
 Conc: 58.32 ng/ml



#19 AR-1242-4

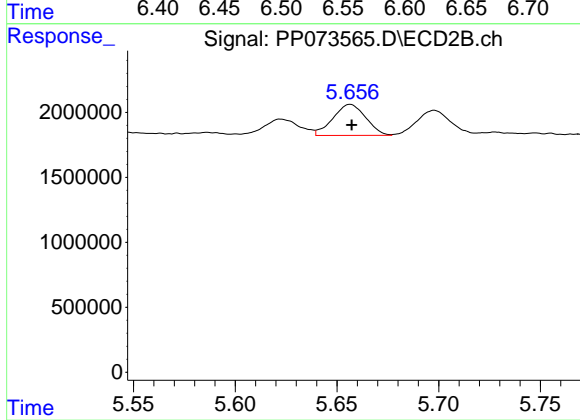
R.T.: 5.136 min
 Delta R.T.: 0.000 min
 Response: 2337623
 Conc: 51.81 ng/ml



#20 AR-1242-5

R.T.: 6.547 min
 Delta R.T.: 0.001 min
 Response: 2626667
 Conc: 78.75 ng/ml

Instrument :
 ECD_P
 ClientSampleId :
 AR1242ICC050



#20 AR-1242-5

R.T.: 5.657 min
 Delta R.T.: 0.000 min
 Response: 2688857
 Conc: 47.12 ng/ml