

Data Path : Z:\pestpcbsrv\HPCHEM1\ECD_P\Data\PP070825\
 Data File : PP073567.D
 Signal(s) : Signal #1: ECD1A.ch Signal #2: ECD2B.ch
 Acq On : 08 Jul 2025 00:35
 Operator : YP\AJ
 Sample : AR1248ICCC750
 Misc :
 ALS Vial : 16 Sample Multiplier: 1

Instrument :
 ECD_P
ClientSampleId :
 AR1248ICCC750

Integration File signal 1: autoint1.e
 Integration File signal 2: autoint2.e
 Quant Time: Jul 08 02:21:34 2025
 Quant Method : Z:\pestpcbsrv\HPCHEM1\ECD_P\methods\PP070825.M
 Quant Title : GC EXTRACTABLES
 QLast Update : Tue Jul 08 02:20:17 2025
 Response via : Initial Calibration
 Integrator: ChemStation

Volume Inj. : 2 µl
 Signal #1 Phase : ZB-MR1 Signal #2 Phase: ZB-MR2
 Signal #1 Info : 30Mx0.32mmx 0.50µ Signal #2 Info : 30M x 0.32mm x 0.25µm

Compound	RT#1	RT#2	Resp#1	Resp#2	ng/ml	ng/ml

System Monitoring Compounds						
1) SA Tetrachlo...	4.489	3.779	102.8E6	139.9E6	72.663	73.239
2) SA Decachlor...	10.178	8.781	84981366	104.5E6	74.210	76.789
Target Compounds						
21) L5 AR-1248-1	5.639	4.858	22755547	32692852	723.318	723.525
22) L5 AR-1248-2	5.911	5.094	29802657	43939758	735.228	709.977
23) L5 AR-1248-3	6.113	5.135	34385217	45992259	746.283	714.081
24) L5 AR-1248-4	6.511	5.307	41943849	54019844	733.958	717.315
25) L5 AR-1248-5	6.551	5.698	40278207	54907819	722.363	718.469

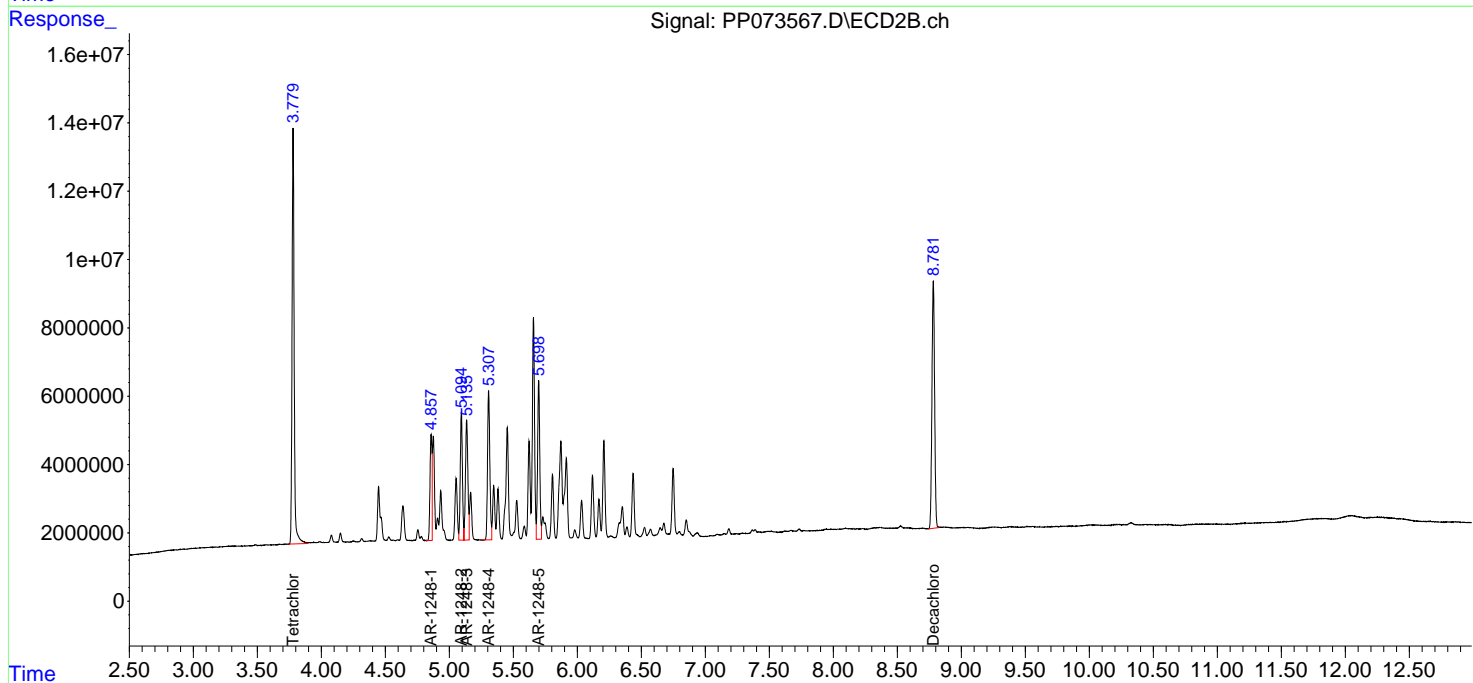
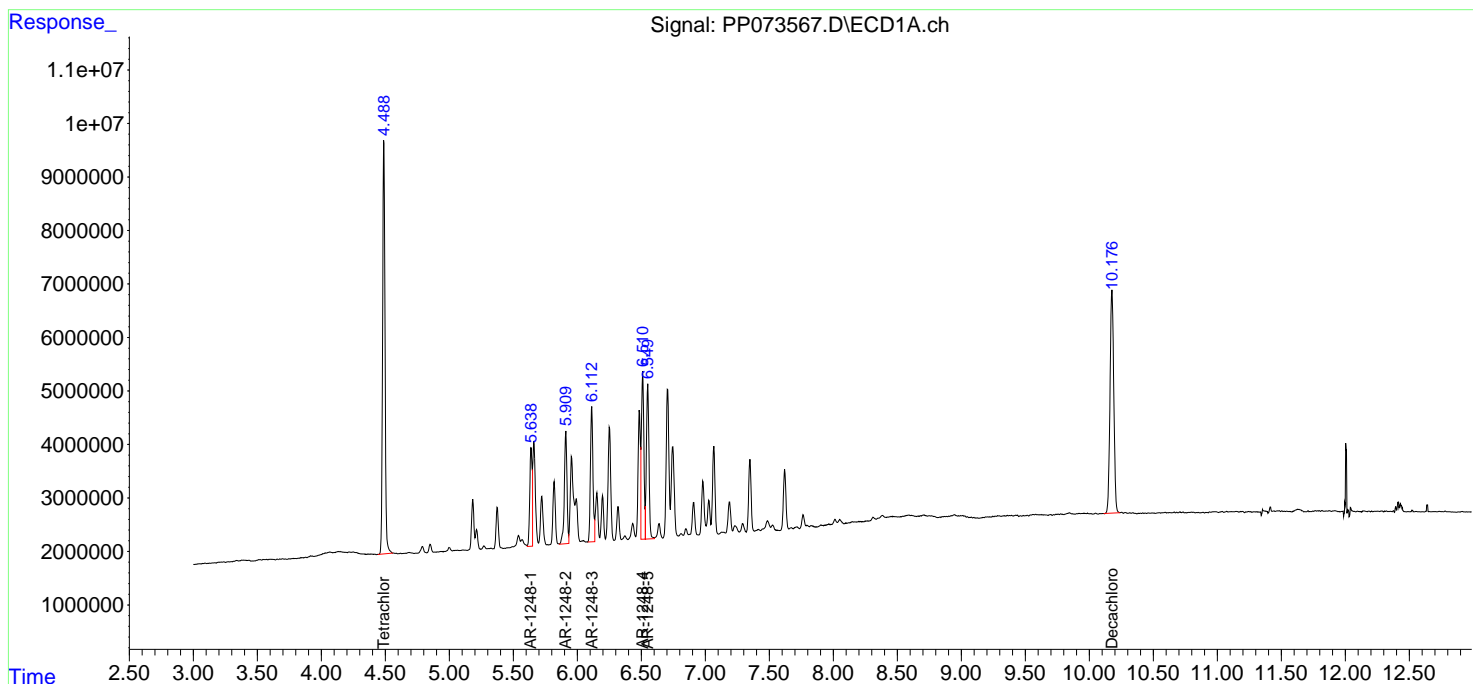
(f)=RT Delta > 1/2 Window (#)=Amounts differ by > 25% (m)=manual int.

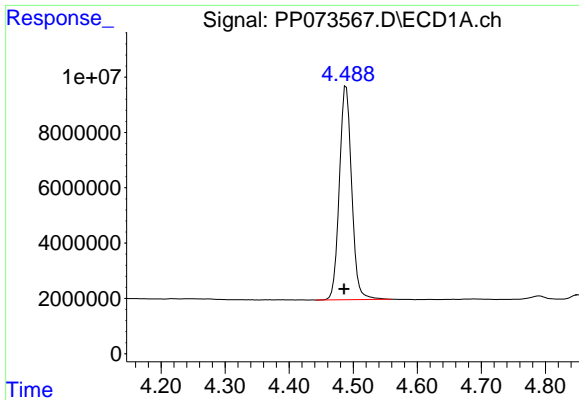
Data Path : Z:\pestpcbsrv\HPCHEM1\ECD_P\Data\PP070825\
 Data File : PP073567.D
 Signal(s) : Signal #1: ECD1A.ch Signal #2: ECD2B.ch
 Acq On : 08 Jul 2025 00:35
 Operator : YP\AJ
 Sample : AR1248ICCC750
 Misc :
 ALS Vial : 16 Sample Multiplier: 1

Instrument :
 ECD_P
 ClientSampleId :
 AR1248ICCC750

Integration File signal 1: autoint1.e
 Integration File signal 2: autoint2.e
 Quant Time: Jul 08 02:21:34 2025
 Quant Method : Z:\pestpcbsrv\HPCHEM1\ECD_P\methods\PP070825.M
 Quant Title : GC EXTRACTABLES
 QLast Update : Tue Jul 08 02:20:17 2025
 Response via : Initial Calibration
 Integrator: ChemStation

Volume Inj. : 2 µl
 Signal #1 Phase : ZB-MR1 Signal #2 Phase: ZB-MR2
 Signal #1 Info : 30Mx0.32mmx 0.50µ Signal #2 Info : 30M x 0.32mm x 0.25µm

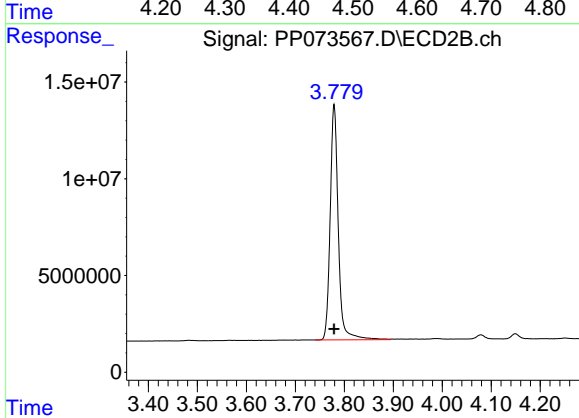




#1 Tetrachloro-m-xylene

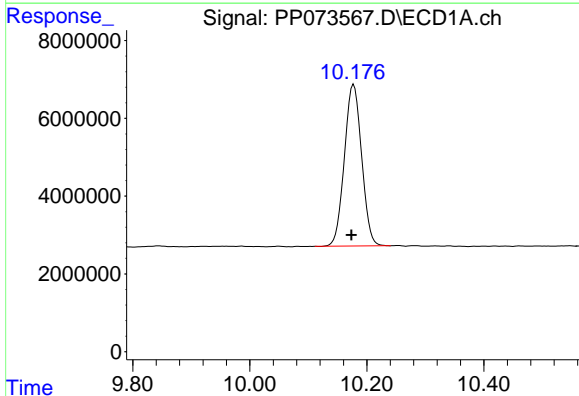
R.T.: 4.489 min
 Delta R.T.: 0.003 min
 Response: 102849476
 Conc: 72.66 ng/ml

Instrument :
 ECD_P
 ClientSampleId :
 AR1248ICC750



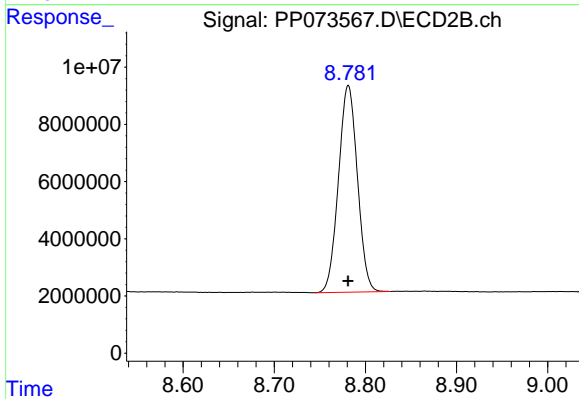
#1 Tetrachloro-m-xylene

R.T.: 3.779 min
 Delta R.T.: 0.000 min
 Response: 139916989
 Conc: 73.24 ng/ml



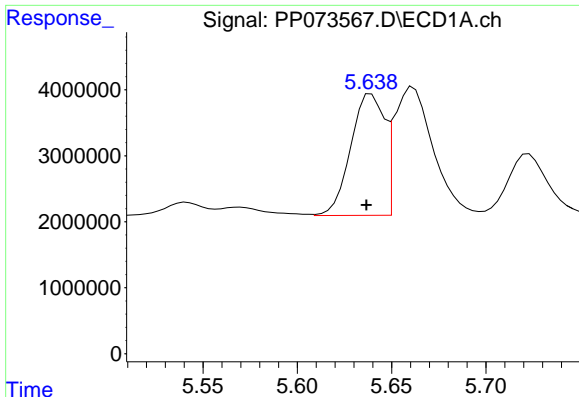
#2 Decachlorobiphenyl

R.T.: 10.178 min
 Delta R.T.: 0.004 min
 Response: 84981366
 Conc: 74.21 ng/ml



#2 Decachlorobiphenyl

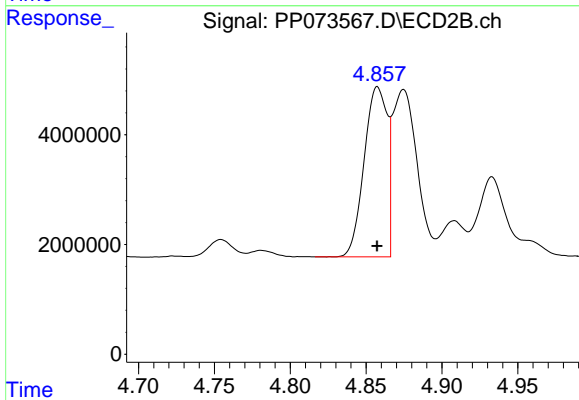
R.T.: 8.781 min
 Delta R.T.: 0.000 min
 Response: 104460409
 Conc: 76.79 ng/ml



#21 AR-1248-1

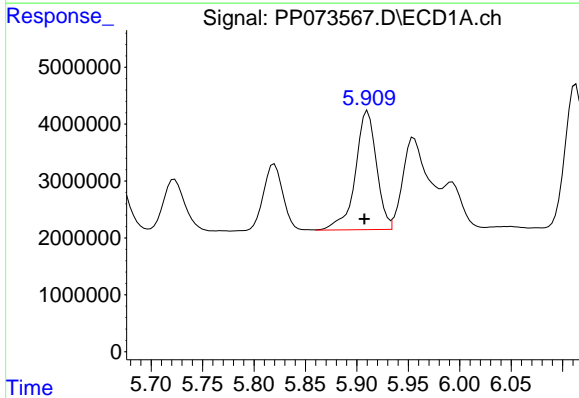
R.T.: 5.639 min
 Delta R.T.: 0.003 min
 Response: 22755547
 Conc: 723.32 ng/ml

Instrument :
 ECD_P
 ClientSampleId :
 AR1248ICC750



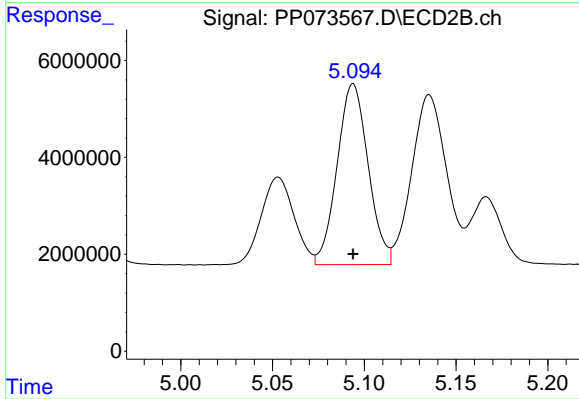
#21 AR-1248-1

R.T.: 4.858 min
 Delta R.T.: 0.000 min
 Response: 32692852
 Conc: 723.52 ng/ml



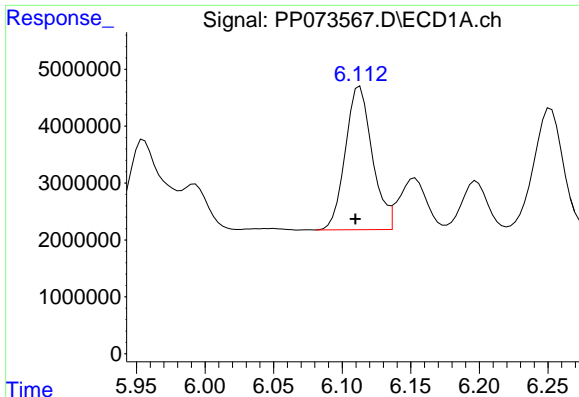
#22 AR-1248-2

R.T.: 5.911 min
 Delta R.T.: 0.003 min
 Response: 29802657
 Conc: 735.23 ng/ml



#22 AR-1248-2

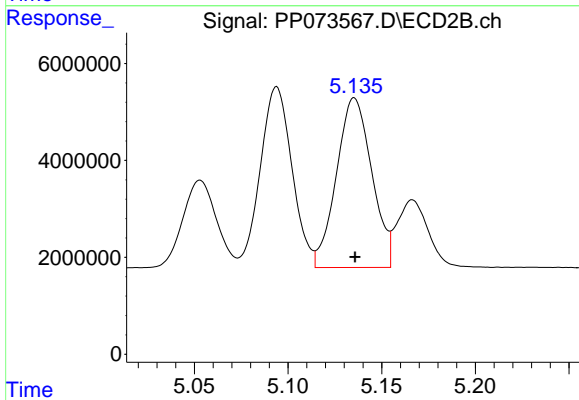
R.T.: 5.094 min
 Delta R.T.: 0.000 min
 Response: 43939758
 Conc: 709.98 ng/ml



#23 AR-1248-3

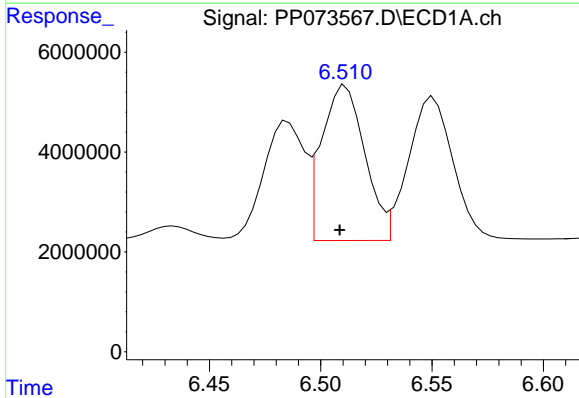
R.T.: 6.113 min
 Delta R.T.: 0.003 min
 Response: 34385217
 Conc: 746.28 ng/ml

Instrument :
 ECD_P
 ClientSampleId :
 AR1248ICC750



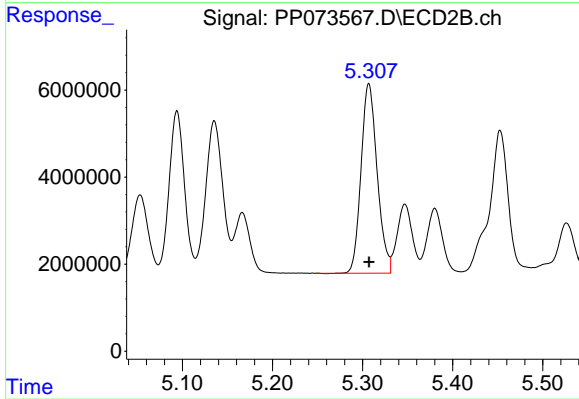
#23 AR-1248-3

R.T.: 5.135 min
 Delta R.T.: 0.000 min
 Response: 45992259
 Conc: 714.08 ng/ml



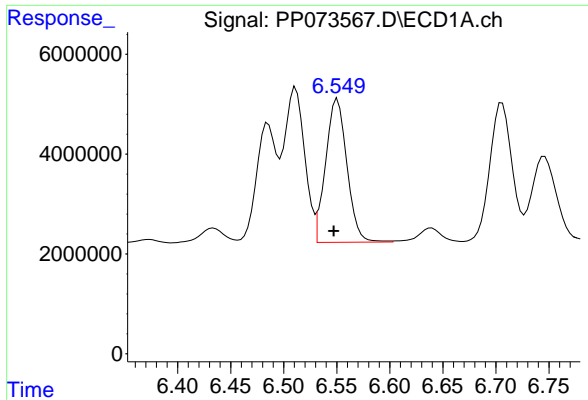
#24 AR-1248-4

R.T.: 6.511 min
 Delta R.T.: 0.003 min
 Response: 41943849
 Conc: 733.96 ng/ml



#24 AR-1248-4

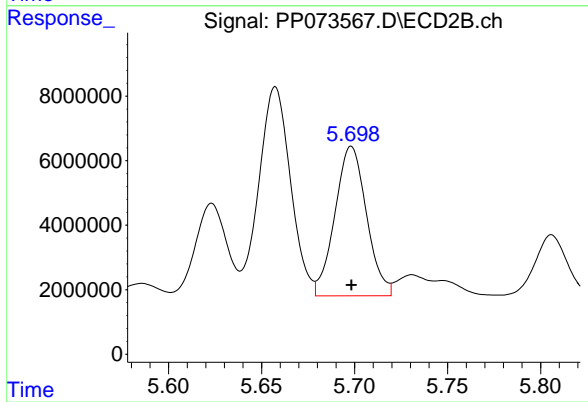
R.T.: 5.307 min
 Delta R.T.: 0.000 min
 Response: 54019844
 Conc: 717.32 ng/ml



#25 AR-1248-5

R.T.: 6.551 min
 Delta R.T.: 0.003 min
 Response: 40278207
 Conc: 722.36 ng/ml

Instrument :
 ECD_P
 ClientSampleId :
 AR1248ICC750



#25 AR-1248-5

R.T.: 5.698 min
 Delta R.T.: 0.000 min
 Response: 54907819
 Conc: 718.47 ng/ml