

Data Path : Z:\pestpcbsrv\HPCHEM1\ECD_P\Data\PP070825\
 Data File : PP073568.D
 Signal(s) : Signal #1: ECD1A.ch Signal #2: ECD2B.ch
 Acq On : 08 Jul 2025 00:52
 Operator : YP\AJ
 Sample : AR1248ICC500
 Misc :
 ALS Vial : 17 Sample Multiplier: 1

Instrument :
 ECD_P
ClientSampleId :
 AR1248ICC500

Integration File signal 1: autoint1.e
 Integration File signal 2: autoint2.e
 Quant Time: Jul 08 02:21:57 2025
 Quant Method : Z:\pestpcbsrv\HPCHEM1\ECD_P\methods\PP070825.M
 Quant Title : GC EXTRACTABLES
 QLast Update : Tue Jul 08 02:20:17 2025
 Response via : Initial Calibration
 Integrator: ChemStation

Volume Inj. : 2 µl
 Signal #1 Phase : ZB-MR1 Signal #2 Phase: ZB-MR2
 Signal #1 Info : 30Mx0.32mmx 0.50µ Signal #2 Info : 30M x 0.32mm x 0.25µm

Compound	RT#1	RT#2	Resp#1	Resp#2	ng/ml	ng/ml

System Monitoring Compounds						
1) SA Tetrachlo...	4.486	3.779	70771652	95520830	50.000	50.000
2) SA Decachlor...	10.174	8.781	57257196	68017781	50.000	50.000
Target Compounds						
21) L5 AR-1248-1	5.637	4.857	15729968	22592772	500.000	500.000
22) L5 AR-1248-2	5.907	5.094	20267627	30944510	500.000	500.000
23) L5 AR-1248-3	6.110	5.136	23037645	32203795	500.000	500.000
24) L5 AR-1248-4	6.509	5.307	28573723	37654186	500.000	500.000
25) L5 AR-1248-5	6.547	5.698	27879471	38211657	500.000	500.000

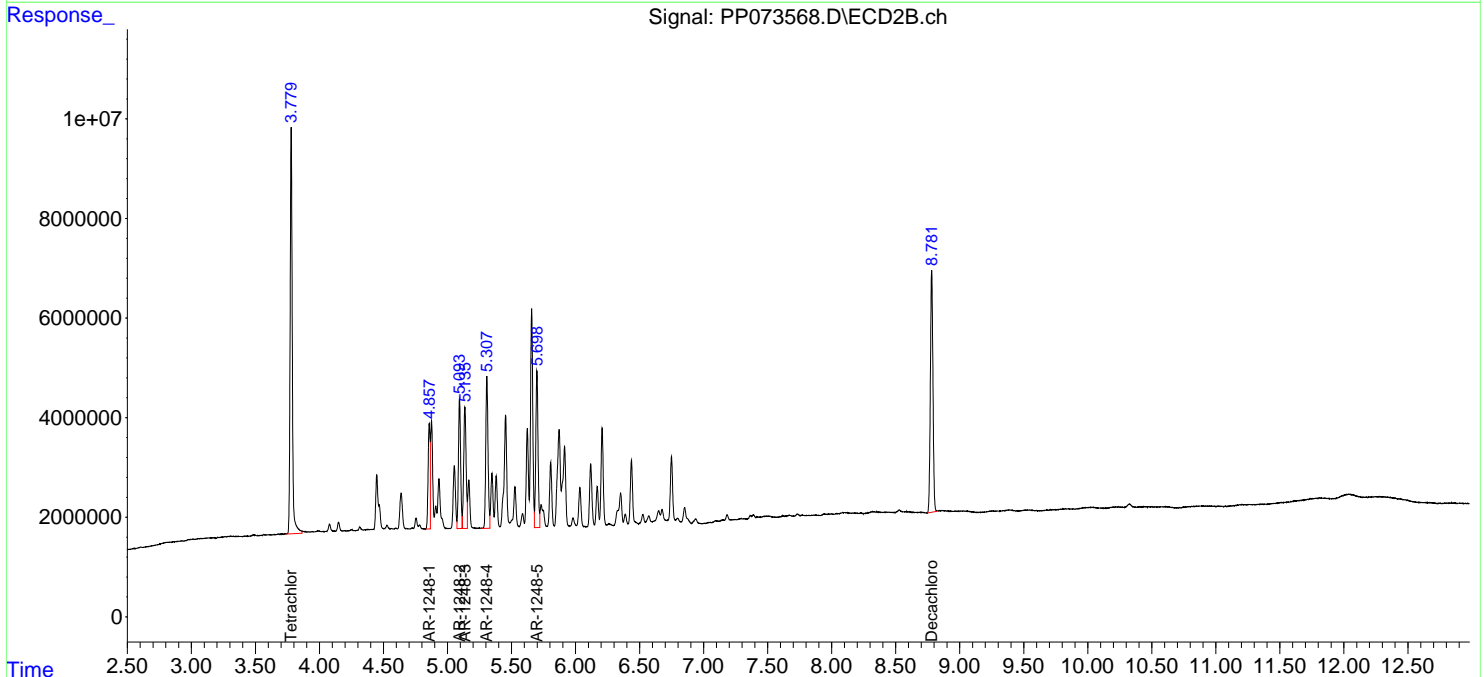
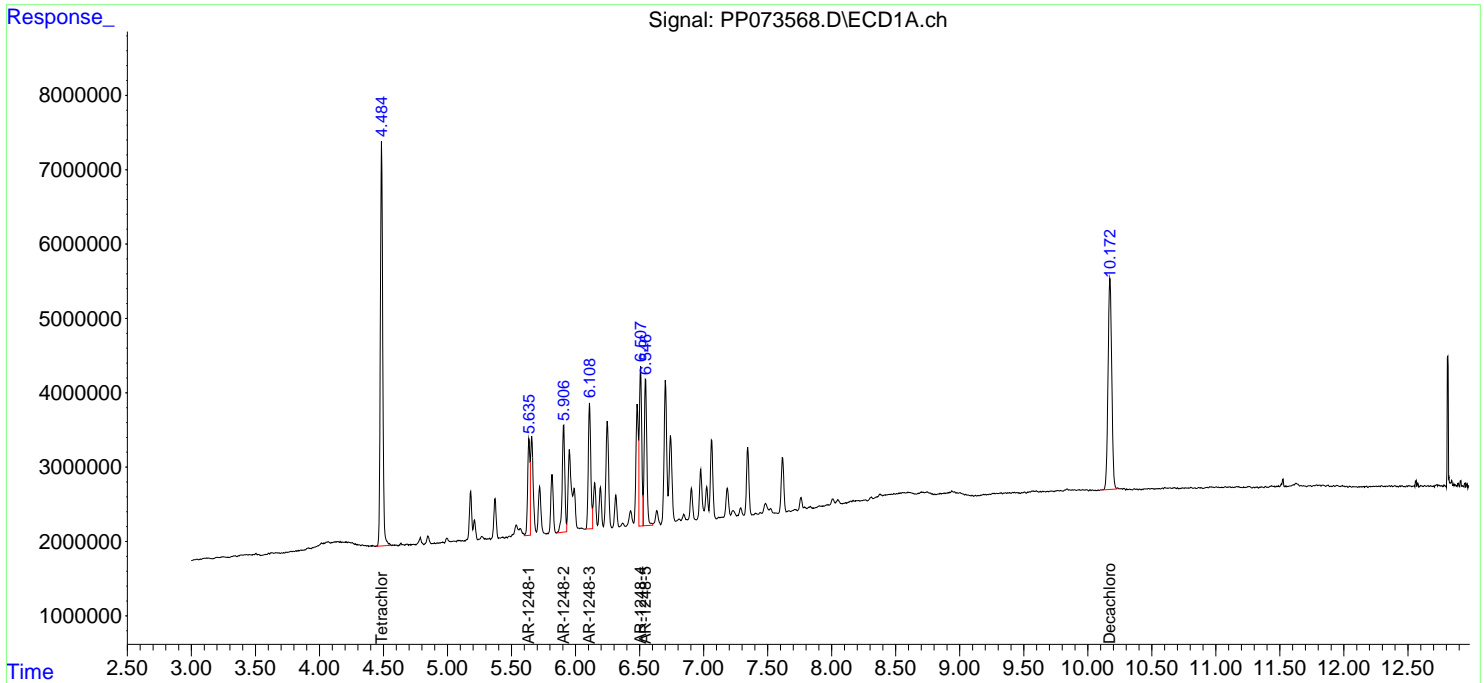
(f)=RT Delta > 1/2 Window (#)=Amounts differ by > 25% (m)=manual int.

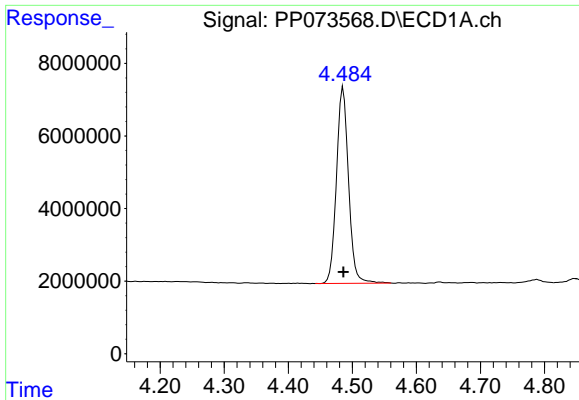
Data Path : Z:\pestpcbsrv\HPCHEM1\ECD_P\Data\PP070825\
 Data File : PP073568.D
 Signal(s) : Signal #1: ECD1A.ch Signal #2: ECD2B.ch
 Acq On : 08 Jul 2025 00:52
 Operator : YP\AJ
 Sample : AR1248ICC500
 Misc :
 ALS Vial : 17 Sample Multiplier: 1

Instrument :
 ECD_P
 ClientSampleId :
 AR1248ICC500

Integration File signal 1: autoint1.e
 Integration File signal 2: autoint2.e
 Quant Time: Jul 08 02:21:57 2025
 Quant Method : Z:\pestpcbsrv\HPCHEM1\ECD_P\methods\PP070825.M
 Quant Title : GC EXTRACTABLES
 QLast Update : Tue Jul 08 02:20:17 2025
 Response via : Initial Calibration
 Integrator: ChemStation

Volume Inj. : 2 µl
 Signal #1 Phase : ZB-MR1 Signal #2 Phase: ZB-MR2
 Signal #1 Info : 30Mx0.32mmx 0.50µ Signal #2 Info : 30M x 0.32mm x 0.25µm

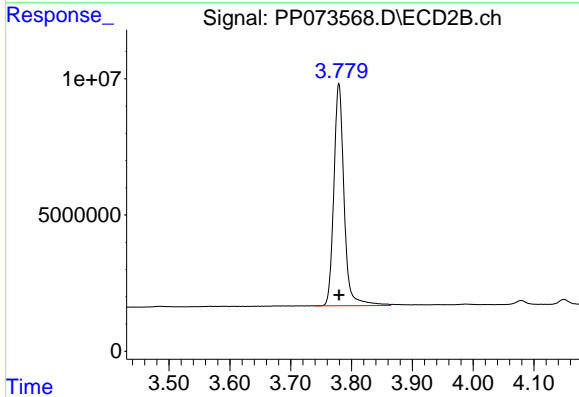




#1 Tetrachloro-m-xylene

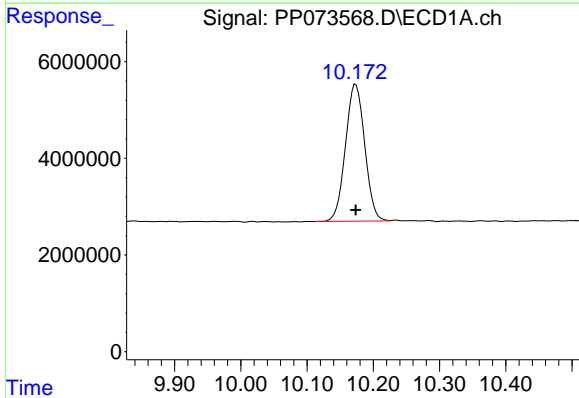
R.T.: 4.486 min
 Delta R.T.: 0.000 min
 Response: 70771652
 Conc: 50.00 ng/ml

Instrument :
 ECD_P
 ClientSampleId :
 AR1248ICC500



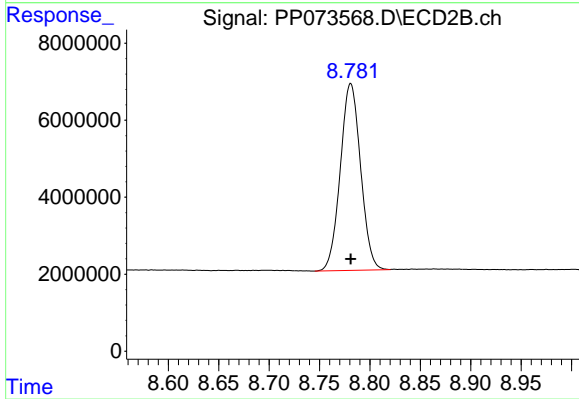
#1 Tetrachloro-m-xylene

R.T.: 3.779 min
 Delta R.T.: 0.000 min
 Response: 95520830
 Conc: 50.00 ng/ml



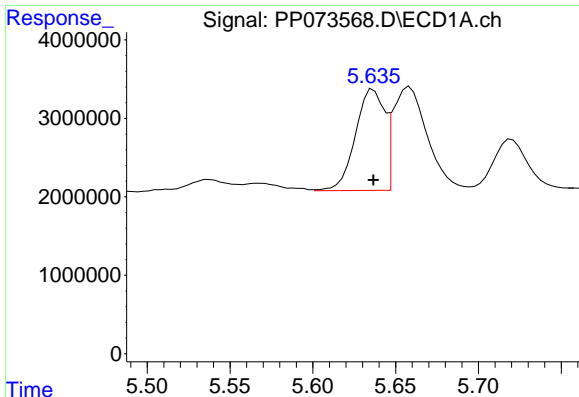
#2 Decachlorobiphenyl

R.T.: 10.174 min
 Delta R.T.: 0.000 min
 Response: 57257196
 Conc: 50.00 ng/ml



#2 Decachlorobiphenyl

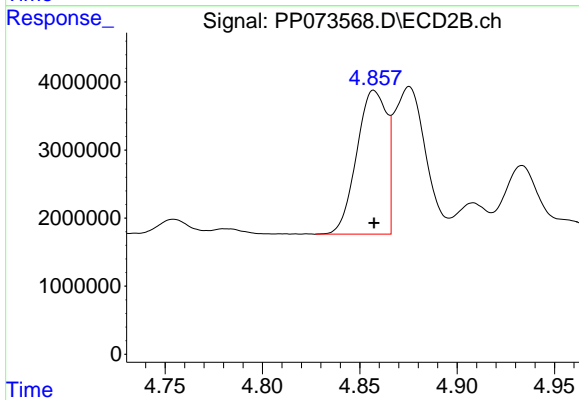
R.T.: 8.781 min
 Delta R.T.: 0.000 min
 Response: 68017781
 Conc: 50.00 ng/ml



#21 AR-1248-1

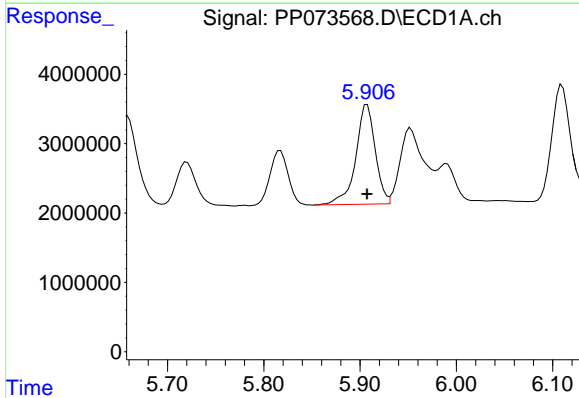
R.T.: 5.637 min
 Delta R.T.: 0.000 min
 Response: 15729968
 Conc: 500.00 ng/ml

Instrument :
 ECD_P
 ClientSampleId :
 AR1248ICC500



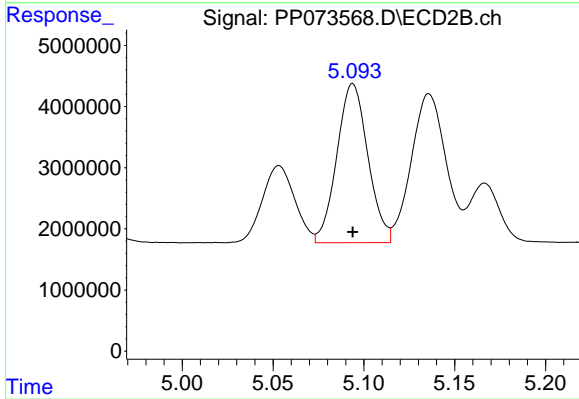
#21 AR-1248-1

R.T.: 4.857 min
 Delta R.T.: 0.000 min
 Response: 22592772
 Conc: 500.00 ng/ml



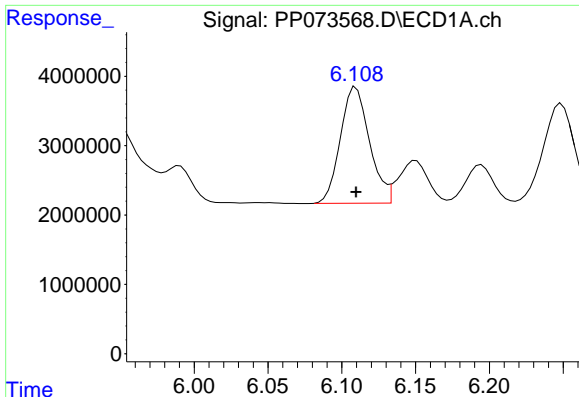
#22 AR-1248-2

R.T.: 5.907 min
 Delta R.T.: 0.000 min
 Response: 20267627
 Conc: 500.00 ng/ml



#22 AR-1248-2

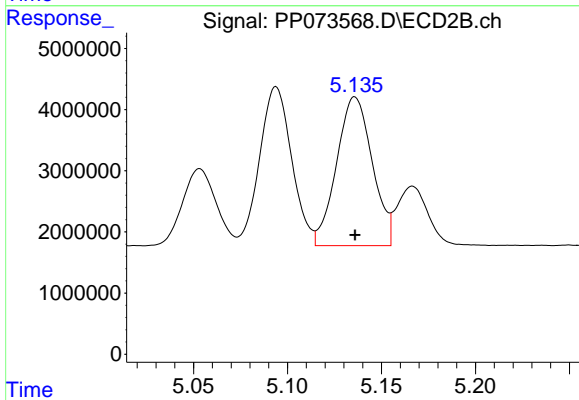
R.T.: 5.094 min
 Delta R.T.: 0.000 min
 Response: 30944510
 Conc: 500.00 ng/ml



#23 AR-1248-3

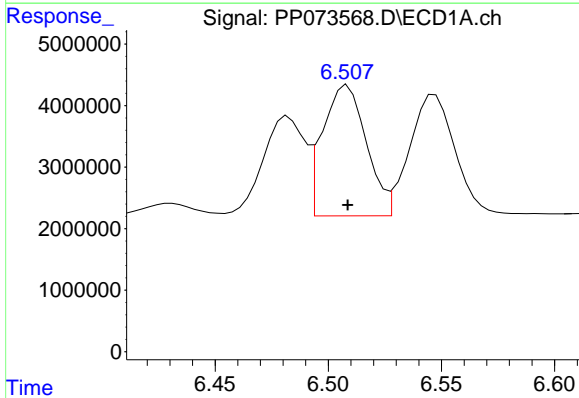
R.T.: 6.110 min
 Delta R.T.: 0.000 min
 Response: 23037645
 Conc: 500.00 ng/ml

Instrument :
 ECD_P
 ClientSampleId :
 AR1248ICC500



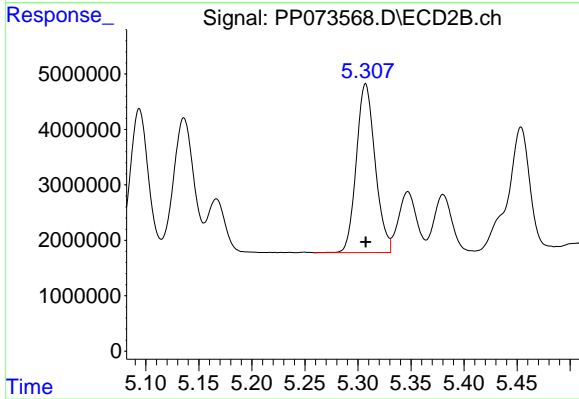
#23 AR-1248-3

R.T.: 5.136 min
 Delta R.T.: 0.000 min
 Response: 32203795
 Conc: 500.00 ng/ml



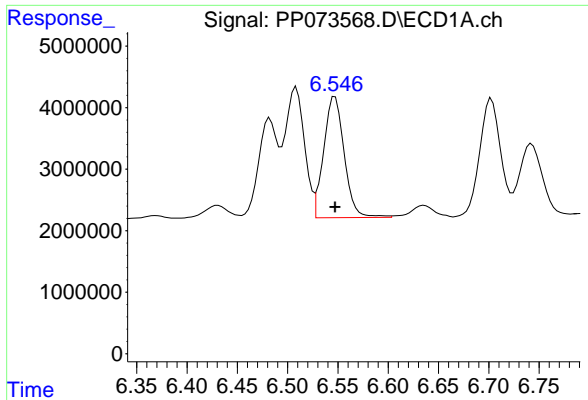
#24 AR-1248-4

R.T.: 6.509 min
 Delta R.T.: 0.000 min
 Response: 28573723
 Conc: 500.00 ng/ml



#24 AR-1248-4

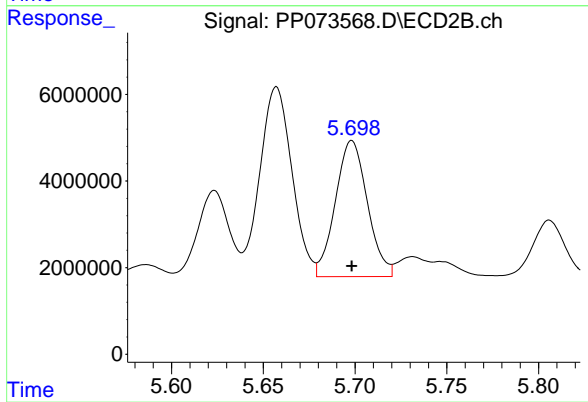
R.T.: 5.307 min
 Delta R.T.: 0.000 min
 Response: 37654186
 Conc: 500.00 ng/ml



#25 AR-1248-5

R.T.: 6.547 min
Delta R.T.: 0.000 min
Response: 27879471
Conc: 500.00 ng/ml

Instrument :
ECD_P
ClientSampleId :
AR1248ICC500



#25 AR-1248-5

R.T.: 5.698 min
Delta R.T.: 0.000 min
Response: 38211657
Conc: 500.00 ng/ml