

Data Path : Z:\pestpcbsrv\HPCHEM1\ECD_P\Data\PP070825\
 Data File : PP073570.D
 Signal(s) : Signal #1: ECD1A.ch Signal #2: ECD2B.ch
 Acq On : 08 Jul 2025 01:25
 Operator : YP\AJ
 Sample : AR1248ICC050
 Misc :
 ALS Vial : 19 Sample Multiplier: 1

Instrument :
 ECD_P
ClientSampleId :
 AR1248ICC050

Integration File signal 1: autoint1.e
 Integration File signal 2: autoint2.e
 Quant Time: Jul 08 02:22:43 2025
 Quant Method : Z:\pestpcbsrv\HPCHEM1\ECD_P\methods\PP070825.M
 Quant Title : GC EXTRACTABLES
 QLast Update : Tue Jul 08 02:20:17 2025
 Response via : Initial Calibration
 Integrator: ChemStation

Volume Inj. : 2 µl
 Signal #1 Phase : ZB-MR1 Signal #2 Phase: ZB-MR2
 Signal #1 Info : 30Mx0.32mmx 0.50µ Signal #2 Info : 30M x 0.32mm x 0.25µm

Compound	RT#1	RT#2	Resp#1	Resp#2	ng/ml	ng/ml

System Monitoring Compounds						
1) SA Tetrachlo...	4.485	3.779	6203851	8373290	4.383	4.383
2) SA Decachlor...	10.173	8.780	4448332	5794229	3.885	4.259
Target Compounds						
21) L5 AR-1248-1	5.635	4.857	1669049	2193065	53.053	48.535
22) L5 AR-1248-2	5.906	5.093	1882218	3238127	46.434	52.322
23) L5 AR-1248-3	6.108	5.135	1881440	3334641	40.834	51.774 #
24) L5 AR-1248-4	6.508	5.307	2994458	3957834	52.399	52.555
25) L5 AR-1248-5	6.546	5.698	3079701	3594939	55.232	47.040

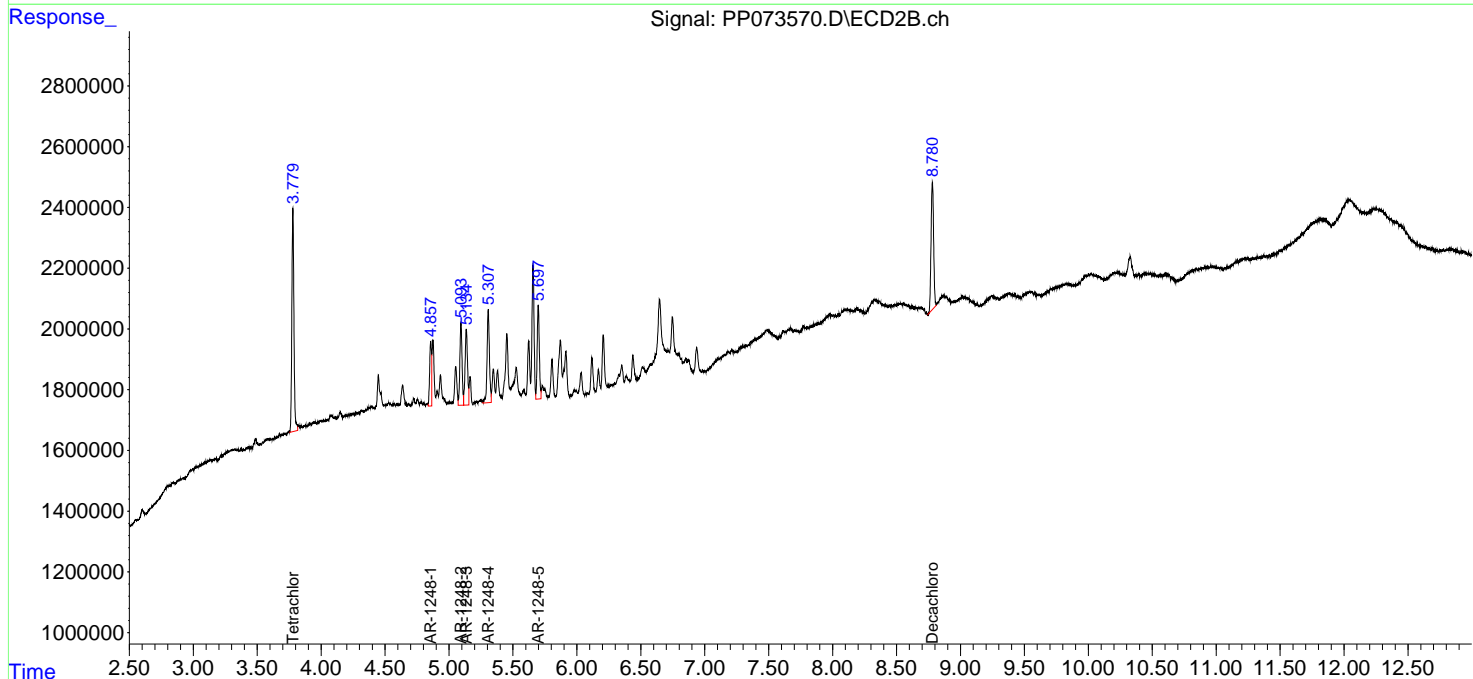
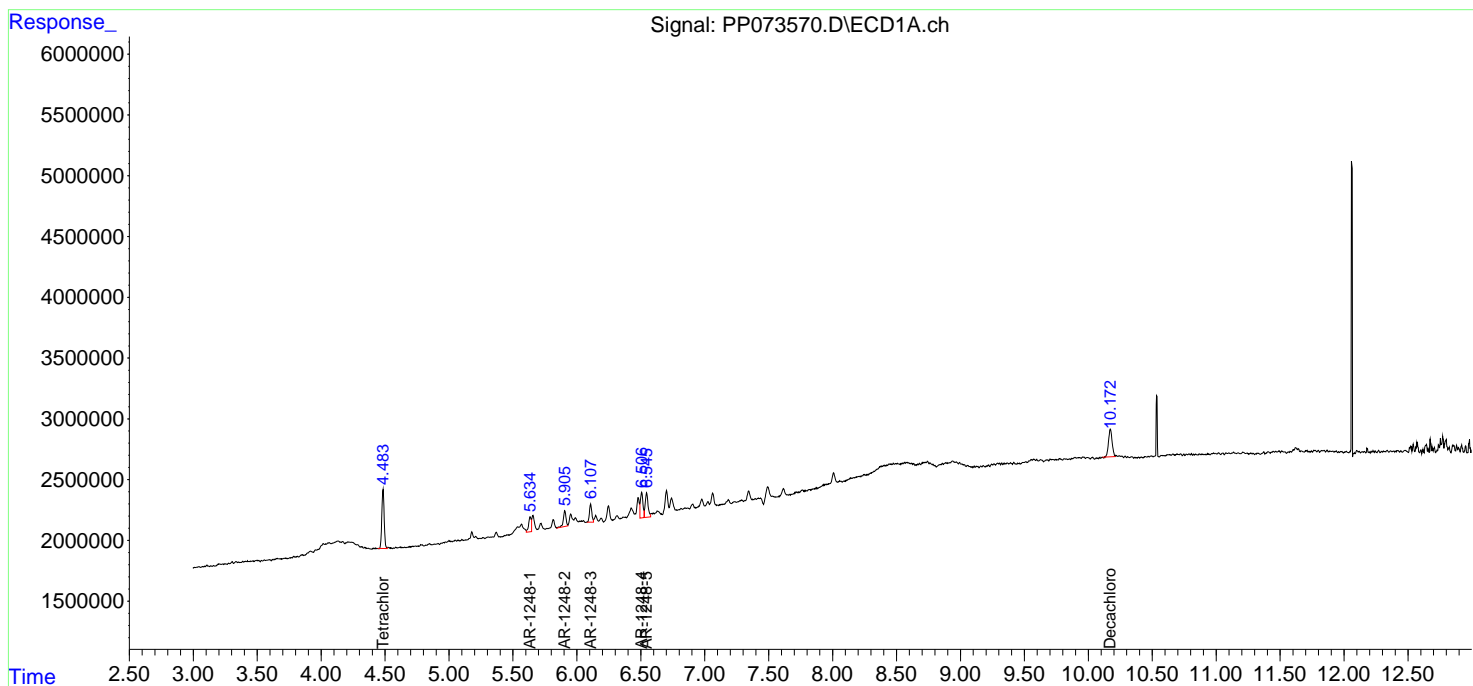
(f)=RT Delta > 1/2 Window (#)=Amounts differ by > 25% (m)=manual int.

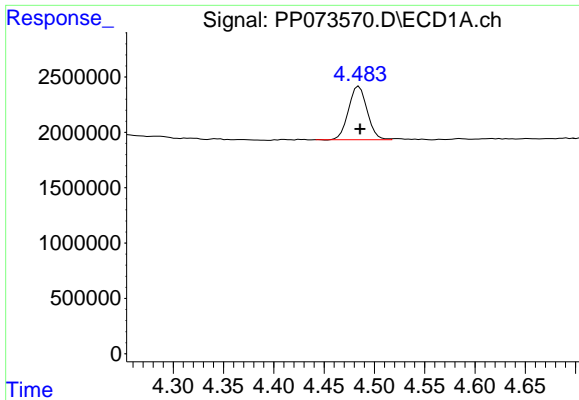
Data Path : Z:\pestpcbsrv\HPCHEM1\ECD_P\Data\PP070825\
 Data File : PP073570.D
 Signal(s) : Signal #1: ECD1A.ch Signal #2: ECD2B.ch
 Acq On : 08 Jul 2025 01:25
 Operator : YP\AJ
 Sample : AR1248ICC050
 Misc :
 ALS Vial : 19 Sample Multiplier: 1

Instrument :
 ECD_P
 ClientSampleId :
 AR1248ICC050

Integration File signal 1: autoint1.e
 Integration File signal 2: autoint2.e
 Quant Time: Jul 08 02:22:43 2025
 Quant Method : Z:\pestpcbsrv\HPCHEM1\ECD_P\methods\PP070825.M
 Quant Title : GC EXTRACTABLES
 QLast Update : Tue Jul 08 02:20:17 2025
 Response via : Initial Calibration
 Integrator: ChemStation

Volume Inj. : 2 µl
 Signal #1 Phase : ZB-MR1 Signal #2 Phase: ZB-MR2
 Signal #1 Info : 30Mx0.32mmx 0.50µ Signal #2 Info : 30M x 0.32mm x 0.25µm

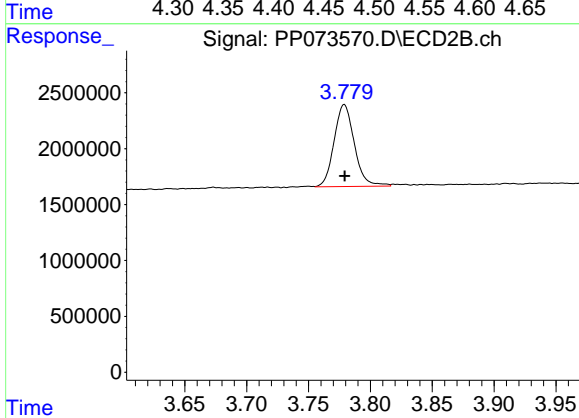




#1 Tetrachloro-m-xylene

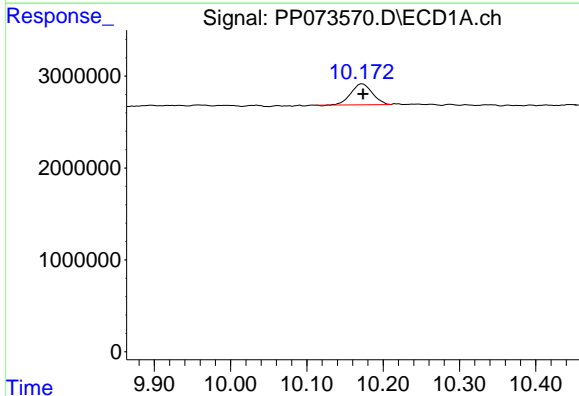
R.T.: 4.485 min
 Delta R.T.: -0.001 min
 Response: 6203851
 Conc: 4.38 ng/ml

Instrument :
 ECD_P
 ClientSampleId :
 AR1248ICC050



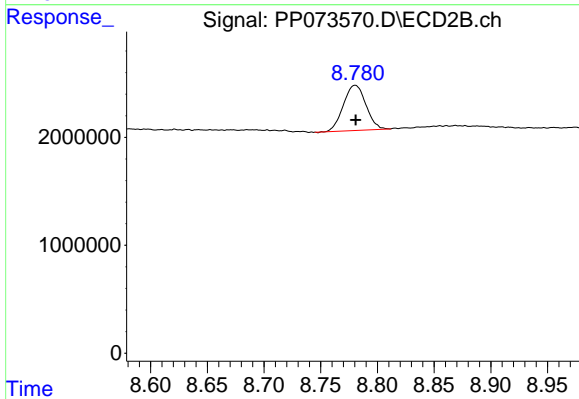
#1 Tetrachloro-m-xylene

R.T.: 3.779 min
 Delta R.T.: 0.000 min
 Response: 8373290
 Conc: 4.38 ng/ml



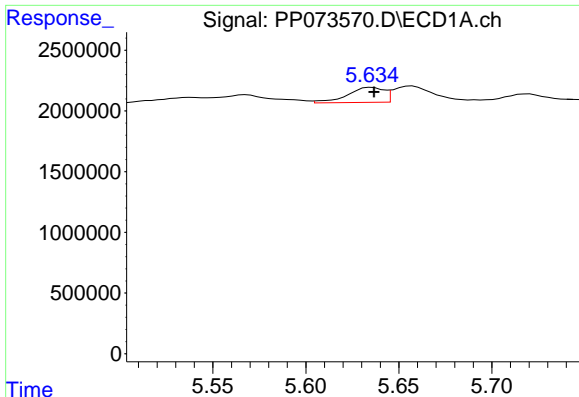
#2 Decachlorobiphenyl

R.T.: 10.173 min
 Delta R.T.: 0.000 min
 Response: 4448332
 Conc: 3.88 ng/ml



#2 Decachlorobiphenyl

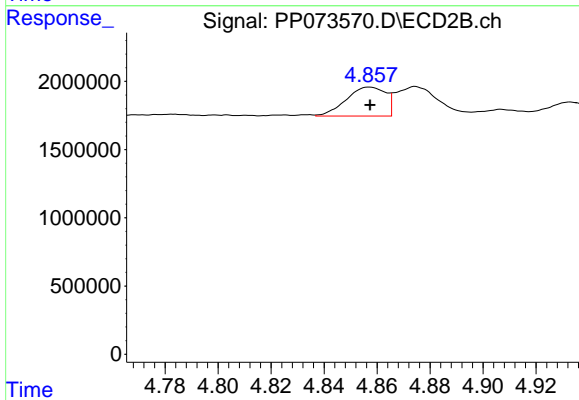
R.T.: 8.780 min
 Delta R.T.: 0.000 min
 Response: 5794229
 Conc: 4.26 ng/ml



#21 AR-1248-1

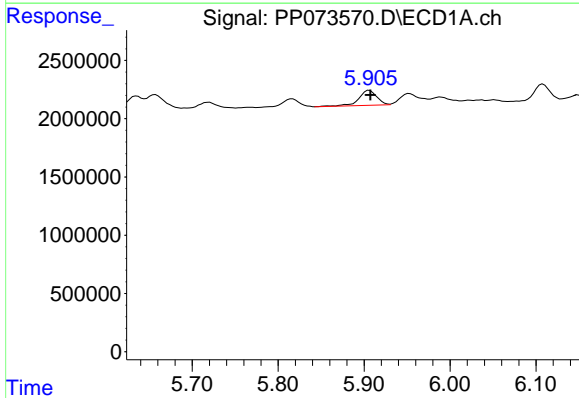
R.T.: 5.635 min
 Delta R.T.: -0.001 min
 Response: 1669049
 Conc: 53.05 ng/ml

Instrument :
 ECD_P
 ClientSampleId :
 AR1248ICC050



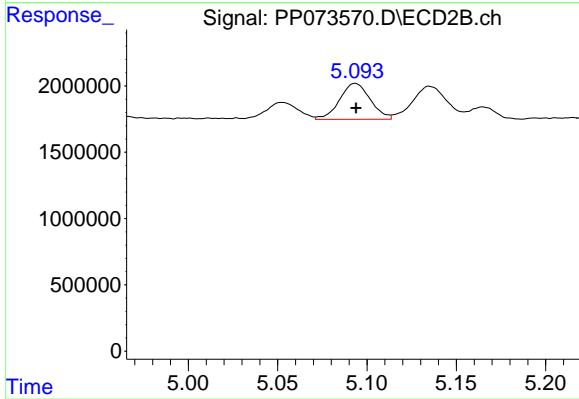
#21 AR-1248-1

R.T.: 4.857 min
 Delta R.T.: 0.000 min
 Response: 2193065
 Conc: 48.53 ng/ml



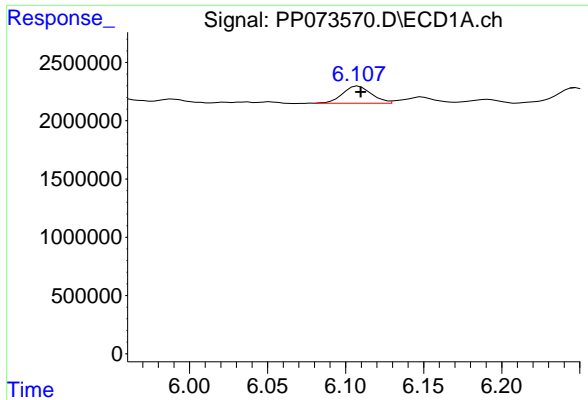
#22 AR-1248-2

R.T.: 5.906 min
 Delta R.T.: -0.001 min
 Response: 1882218
 Conc: 46.43 ng/ml



#22 AR-1248-2

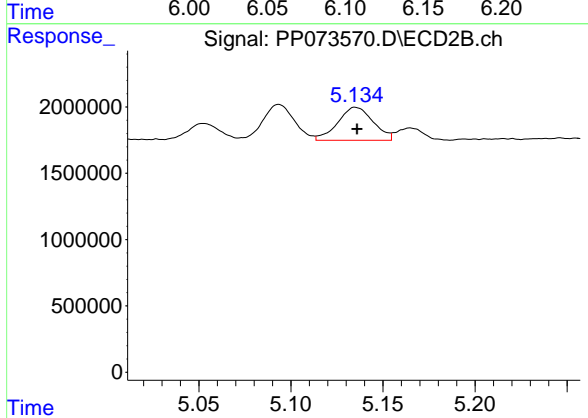
R.T.: 5.093 min
 Delta R.T.: 0.000 min
 Response: 3238127
 Conc: 52.32 ng/ml



#23 AR-1248-3

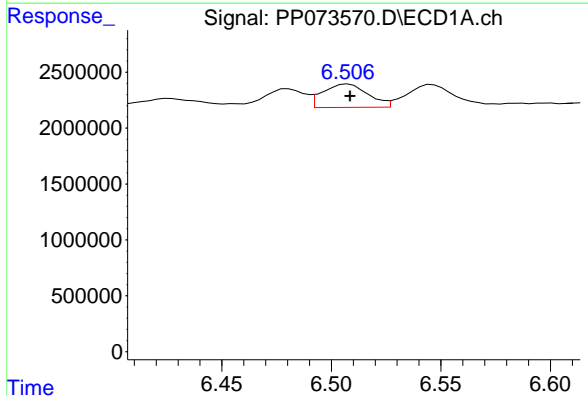
R.T.: 6.108 min
 Delta R.T.: -0.001 min
 Response: 1881440
 Conc: 40.83 ng/ml

Instrument :
 ECD_P
 ClientSampleId :
 AR1248ICC050



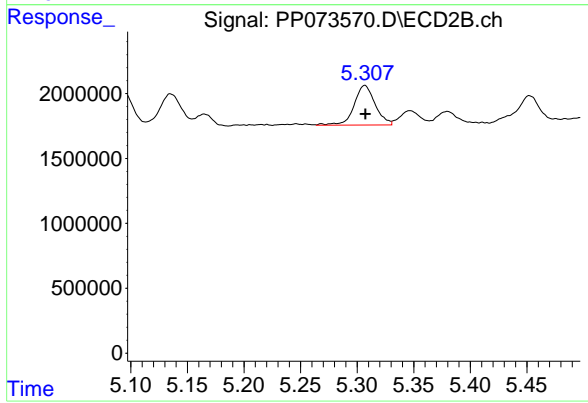
#23 AR-1248-3

R.T.: 5.135 min
 Delta R.T.: 0.000 min
 Response: 3334641
 Conc: 51.77 ng/ml



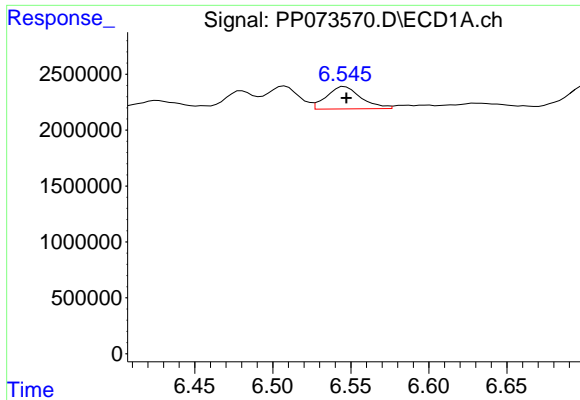
#24 AR-1248-4

R.T.: 6.508 min
 Delta R.T.: 0.000 min
 Response: 2994458
 Conc: 52.40 ng/ml



#24 AR-1248-4

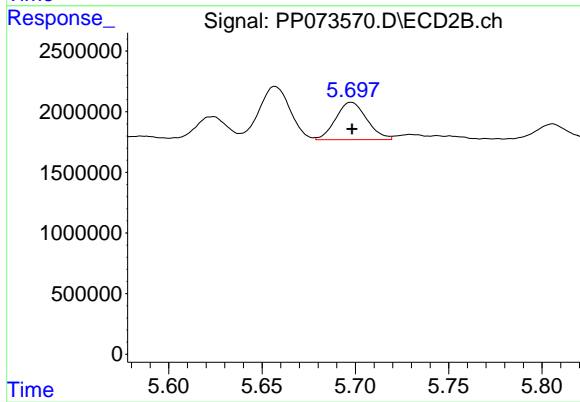
R.T.: 5.307 min
 Delta R.T.: 0.000 min
 Response: 3957834
 Conc: 52.56 ng/ml



#25 AR-1248-5

R.T.: 6.546 min
 Delta R.T.: -0.001 min
 Response: 3079701
 Conc: 55.23 ng/ml

Instrument :
 ECD_P
 ClientSampleId :
 AR1248ICC050



#25 AR-1248-5

R.T.: 5.698 min
 Delta R.T.: 0.000 min
 Response: 3594939
 Conc: 47.04 ng/ml