

Data Path : Z:\pestpcbsrv\HPCHEM1\ECD_P\Data\PP070825\
 Data File : PP073572.D
 Signal(s) : Signal #1: ECD1A.ch Signal #2: ECD2B.ch
 Acq On : 08 Jul 2025 01:57
 Operator : YP\AJ
 Sample : AR1254ICC750
 Misc :
 ALS Vial : 21 Sample Multiplier: 1

Instrument :
 ECD_P
ClientSampleId :
 AR1254ICC750

Integration File signal 1: autoint1.e
 Integration File signal 2: autoint2.e
 Quant Time: Jul 08 02:44:03 2025
 Quant Method : Z:\pestpcbsrv\HPCHEM1\ECD_P\methods\PP070825.M
 Quant Title : GC EXTRACTABLES
 QLast Update : Tue Jul 08 02:41:54 2025
 Response via : Initial Calibration
 Integrator: ChemStation

Volume Inj. : 2 µl
 Signal #1 Phase : ZB-MR1 Signal #2 Phase: ZB-MR2
 Signal #1 Info : 30Mx0.32mmx 0.50µ Signal #2 Info : 30M x 0.32mm x 0.25µm

Compound	RT#1	RT#2	Resp#1	Resp#2	ng/ml	ng/ml

System Monitoring Compounds						
1) SA Tetrachlo...	4.488	3.779	104.7E6	146.2E6	74.706	77.291
2) SA Decachlor...	10.175	8.780	84962440	104.9E6	74.184	76.426
Target Compounds						
26) L6 AR-1254-1	6.486	5.657	39869819	83773101	722.159	745.818
27) L6 AR-1254-2	6.702	5.805	60389680	72154275	731.651	750.983
28) L6 AR-1254-3	7.066	6.207	64508177	114.2E6	728.969	750.593
29) L6 AR-1254-4	7.348	6.435	57167227	70426326	718.253	746.429
30) L6 AR-1254-5	7.764	6.851	55929557	98283712	749.524	751.764

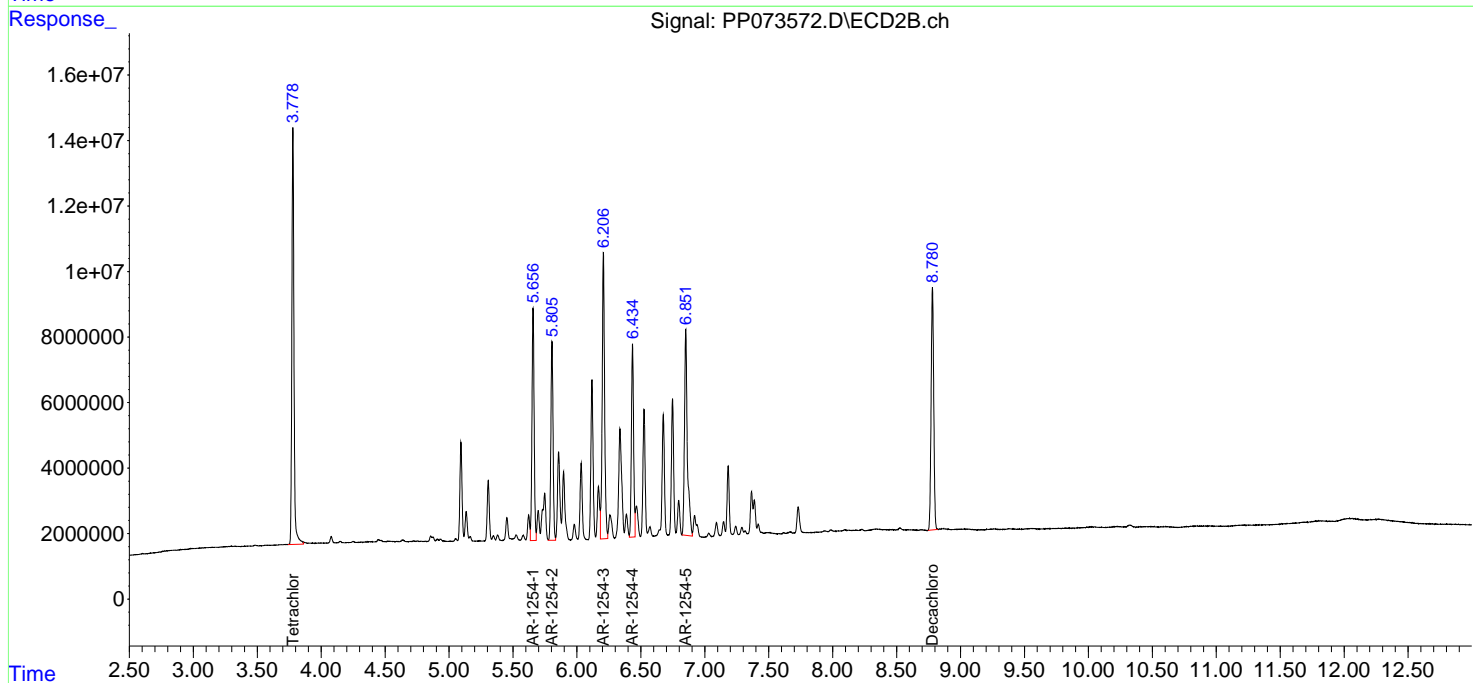
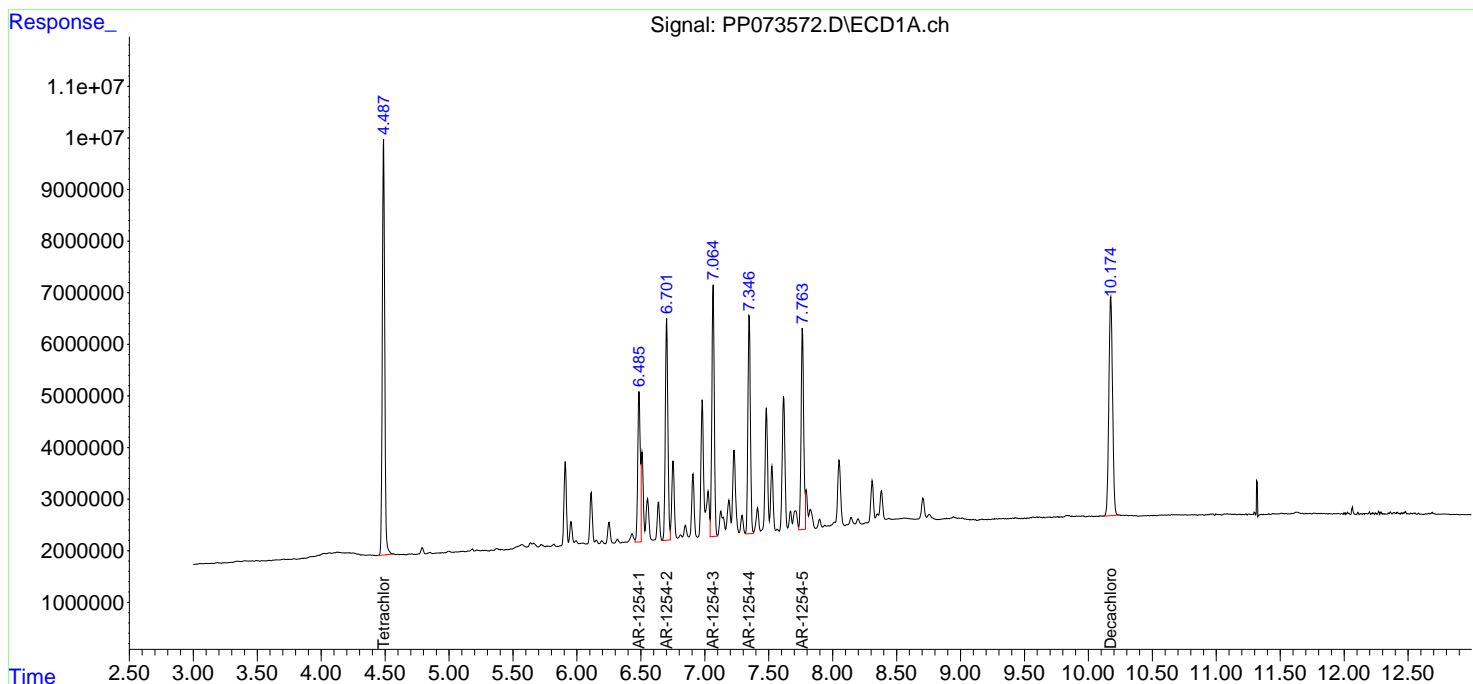
(f)=RT Delta > 1/2 Window (#)=Amounts differ by > 25% (m)=manual int.

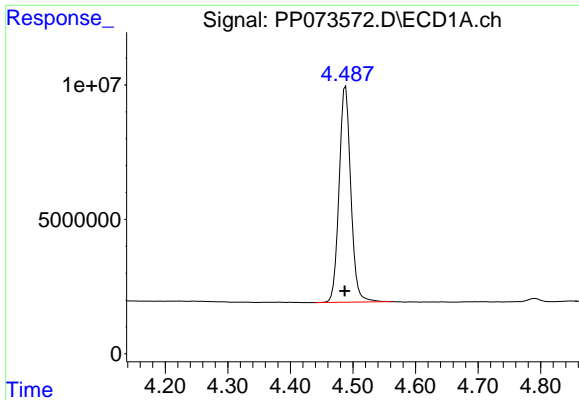
Data Path : Z:\pestpcbsrv\HPCHEM1\ECD_P\Data\PP070825\
 Data File : PP073572.D
 Signal(s) : Signal #1: ECD1A.ch Signal #2: ECD2B.ch
 Acq On : 08 Jul 2025 01:57
 Operator : YP\AJ
 Sample : AR1254ICC750
 Misc :
 ALS Vial : 21 Sample Multiplier: 1

Instrument :
 ECD_P
 ClientSampleId :
 AR1254ICC750

Integration File signal 1: autoint1.e
 Integration File signal 2: autoint2.e
 Quant Time: Jul 08 02:44:03 2025
 Quant Method : Z:\pestpcbsrv\HPCHEM1\ECD_P\methods\PP070825.M
 Quant Title : GC EXTRACTABLES
 QLast Update : Tue Jul 08 02:41:54 2025
 Response via : Initial Calibration
 Integrator: ChemStation

Volume Inj. : 2 µl
 Signal #1 Phase : ZB-MR1 Signal #2 Phase: ZB-MR2
 Signal #1 Info : 30Mx0.32mmx 0.50µ Signal #2 Info : 30M x 0.32mm x 0.25µm

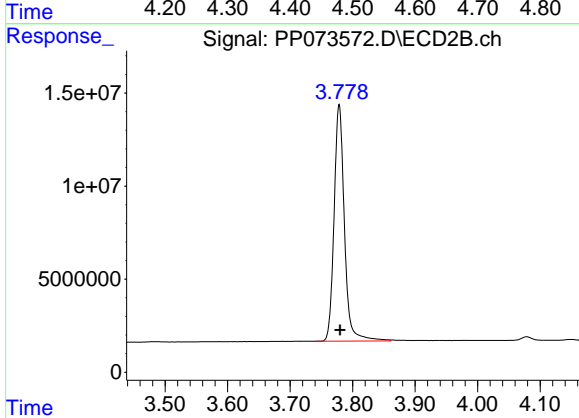




#1 Tetrachloro-m-xylene

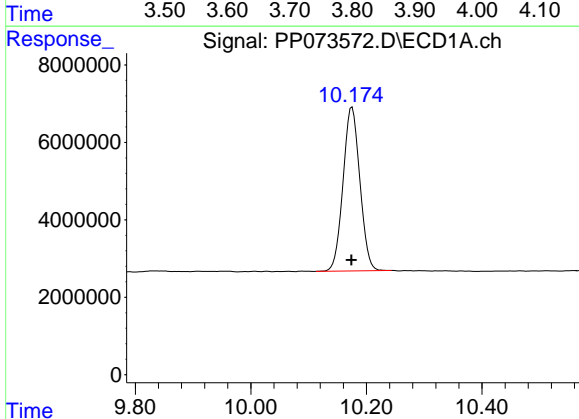
R.T.: 4.488 min
 Delta R.T.: 0.001 min
 Response: 104674567
 Conc: 74.71 ng/ml

Instrument :
 ECD_P
 ClientSampleId :
 AR1254ICC750



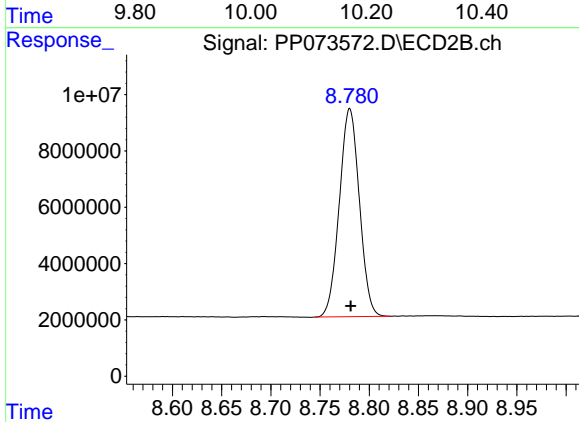
#1 Tetrachloro-m-xylene

R.T.: 3.779 min
 Delta R.T.: -0.001 min
 Response: 146235464
 Conc: 77.29 ng/ml



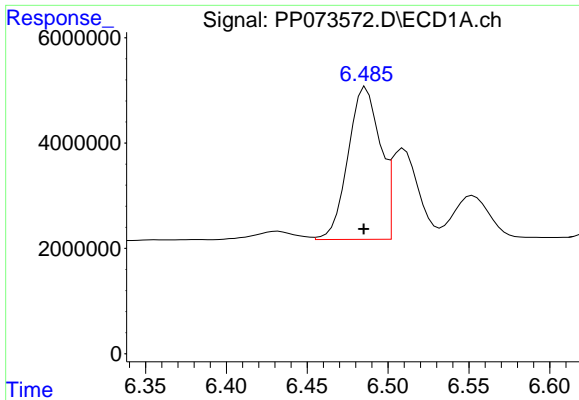
#2 Decachlorobiphenyl

R.T.: 10.175 min
 Delta R.T.: 0.001 min
 Response: 84962440
 Conc: 74.18 ng/ml



#2 Decachlorobiphenyl

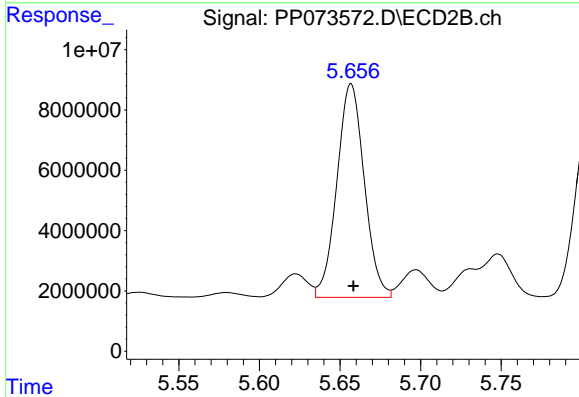
R.T.: 8.780 min
 Delta R.T.: -0.001 min
 Response: 104882292
 Conc: 76.43 ng/ml



#26 AR-1254-1

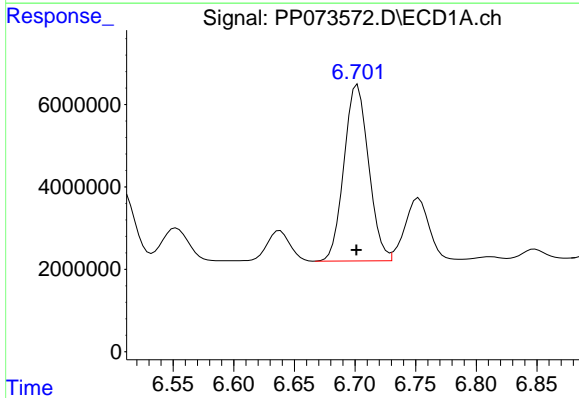
R.T.: 6.486 min
 Delta R.T.: 0.001 min
 Response: 39869819
 Conc: 722.16 ng/ml

Instrument :
 ECD_P
 ClientSampleId :
 AR1254ICC750



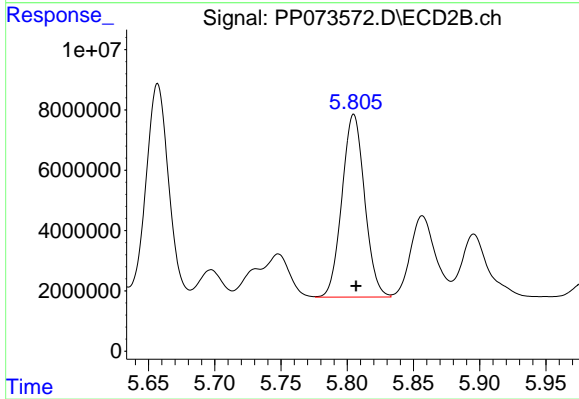
#26 AR-1254-1

R.T.: 5.657 min
 Delta R.T.: -0.001 min
 Response: 83773101
 Conc: 745.82 ng/ml



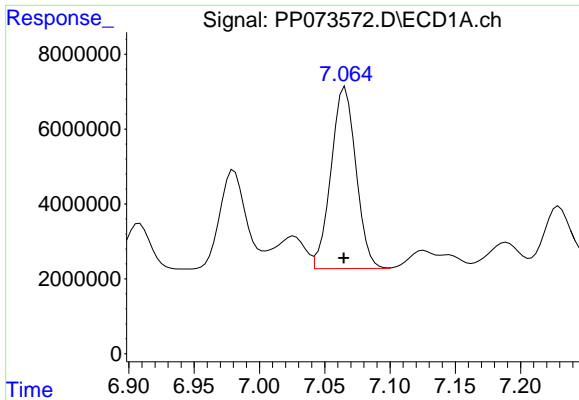
#27 AR-1254-2

R.T.: 6.702 min
 Delta R.T.: 0.000 min
 Response: 60389680
 Conc: 731.65 ng/ml



#27 AR-1254-2

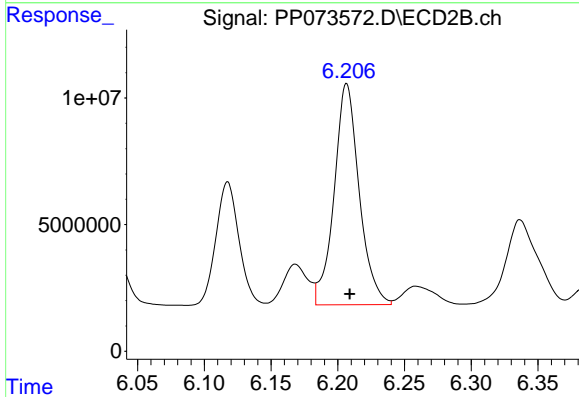
R.T.: 5.805 min
 Delta R.T.: -0.002 min
 Response: 72154275
 Conc: 750.98 ng/ml



#28 AR-1254-3

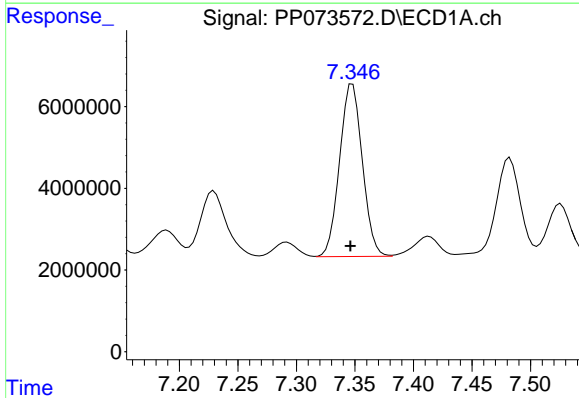
R.T.: 7.066 min
Delta R.T.: 0.001 min
Response: 64508177
Conc: 728.97 ng/ml

Instrument :
ECD_P
ClientSampleId :
AR1254ICC750



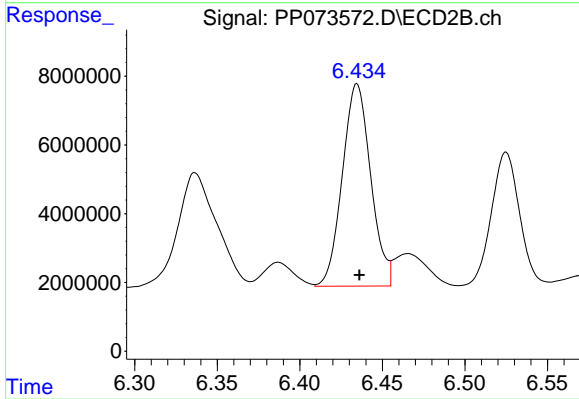
#28 AR-1254-3

R.T.: 6.207 min
Delta R.T.: -0.002 min
Response: 114164607
Conc: 750.59 ng/ml



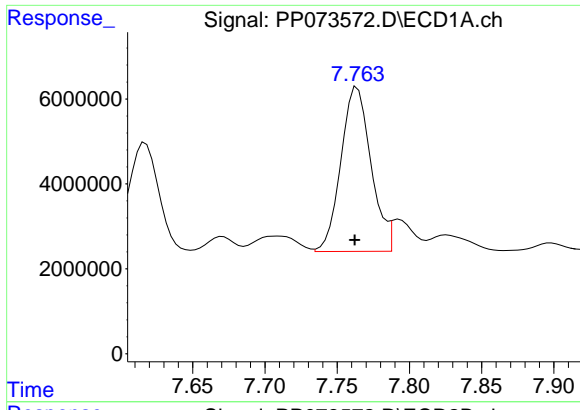
#29 AR-1254-4

R.T.: 7.348 min
Delta R.T.: 0.002 min
Response: 57167227
Conc: 718.25 ng/ml



#29 AR-1254-4

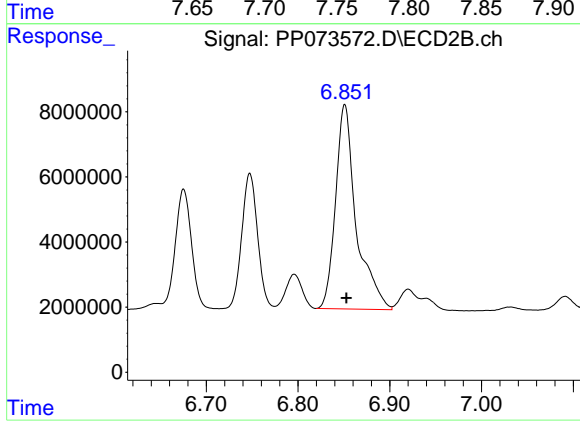
R.T.: 6.435 min
Delta R.T.: -0.001 min
Response: 70426326
Conc: 746.43 ng/ml



#30 AR-1254-5

R.T.: 7.764 min
Delta R.T.: 0.002 min
Response: 55929557
Conc: 749.52 ng/ml

Instrument :
ECD_P
ClientSampleId :
AR1254ICC750



#30 AR-1254-5

R.T.: 6.851 min
Delta R.T.: -0.002 min
Response: 98283712
Conc: 751.76 ng/ml