

Data Path : Z:\pestpcbsrv\HPCHEM1\ECD_P\Data\PP070825\
 Data File : PP073573.D
 Signal(s) : Signal #1: ECD1A.ch Signal #2: ECD2B.ch
 Acq On : 08 Jul 2025 02:14
 Operator : YP\AJ
 Sample : AR1254ICC500
 Misc :
 ALS Vial : 22 Sample Multiplier: 1

Instrument :
 ECD_P
ClientSampleId :
 AR1254ICC500

Integration File signal 1: autoint1.e
 Integration File signal 2: autoint2.e
 Quant Time: Jul 08 02:44:25 2025
 Quant Method : Z:\pestpcbsrv\HPCHEM1\ECD_P\methods\PP070825.M
 Quant Title : GC EXTRACTABLES
 QLast Update : Tue Jul 08 02:41:54 2025
 Response via : Initial Calibration
 Integrator: ChemStation

Volume Inj. : 2 µl
 Signal #1 Phase : ZB-MR1 Signal #2 Phase: ZB-MR2
 Signal #1 Info : 30Mx0.32mmx 0.50µ Signal #2 Info : 30M x 0.32mm x 0.25µm

Compound	RT#1	RT#2	Resp#1	Resp#2	ng/ml	ng/ml

System Monitoring Compounds						
1) SA Tetrachlo...	4.487	3.780	70057774	94600770	50.000	50.000
2) SA Decachlor...	10.174	8.781	57264429	68616932	50.000	50.000
Target Compounds						
26) L6 AR-1254-1	6.485	5.658	27604602	56161903	500.000	500.000
27) L6 AR-1254-2	6.701	5.807	41269473	48039880	500.000	500.000
28) L6 AR-1254-3	7.064	6.209	44246186	76049574	500.000	500.000
29) L6 AR-1254-4	7.346	6.436	39796020	47175510	500.000	500.000
30) L6 AR-1254-5	7.762	6.853	37310051	65368722	500.000	500.000

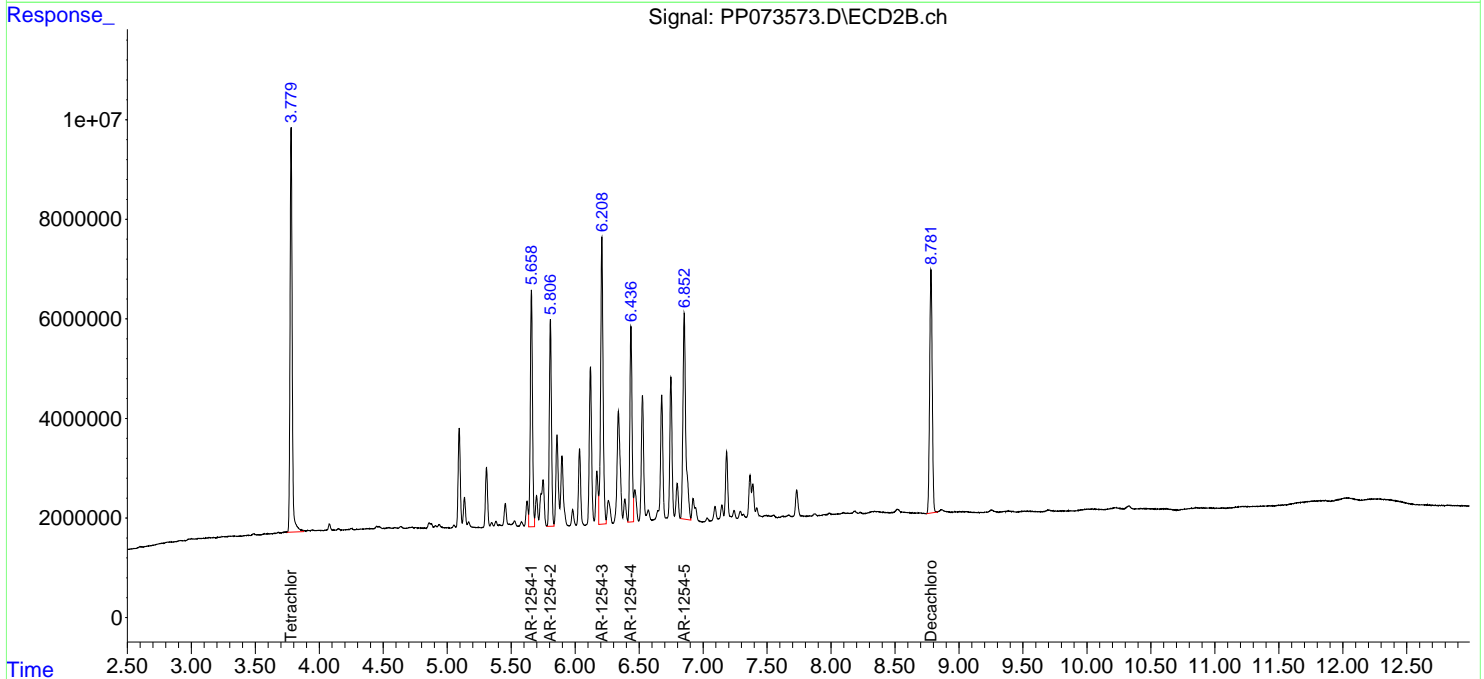
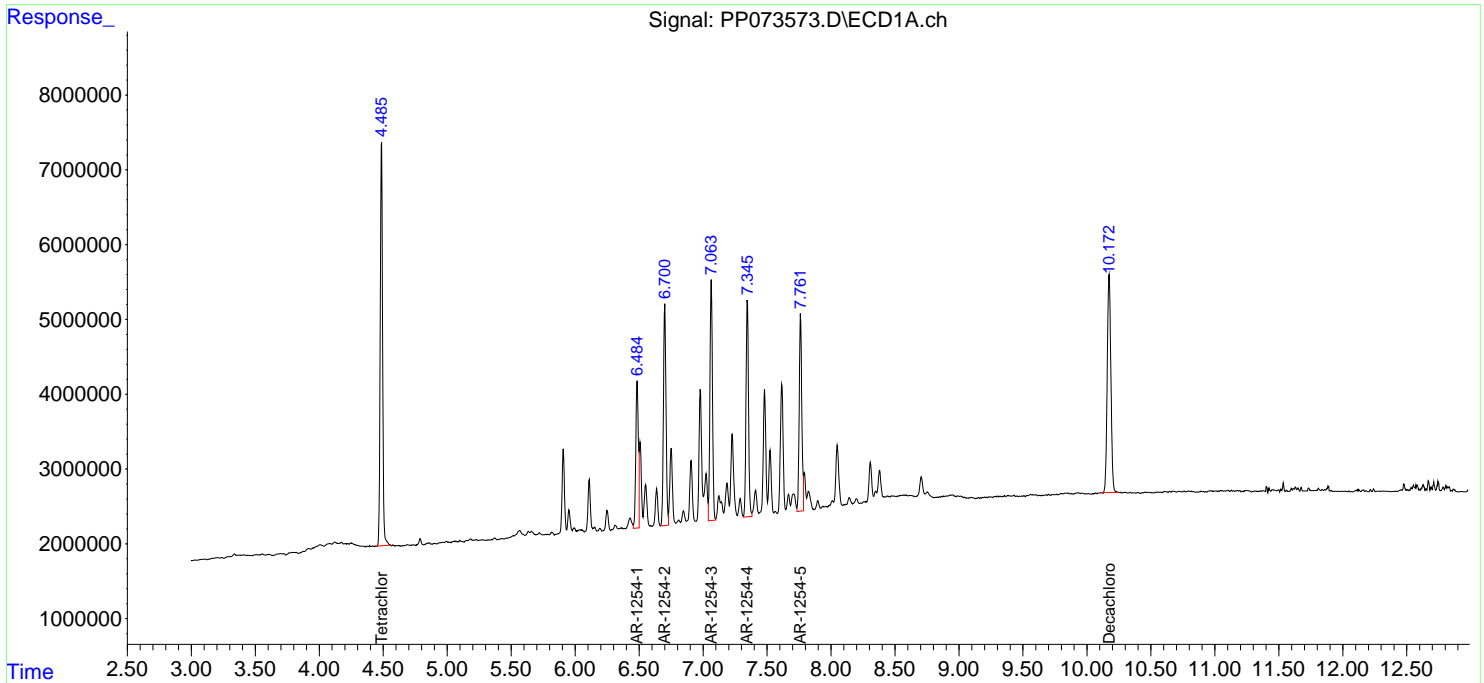
(f)=RT Delta > 1/2 Window (#)=Amounts differ by > 25% (m)=manual int.

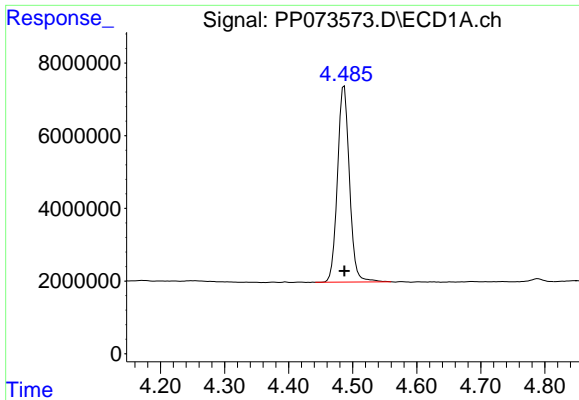
Data Path : Z:\pestpcbsrv\HPCHEM1\ECD_P\Data\PP070825\
 Data File : PP073573.D
 Signal(s) : Signal #1: ECD1A.ch Signal #2: ECD2B.ch
 Acq On : 08 Jul 2025 02:14
 Operator : YP\AJ
 Sample : AR1254ICC500
 Misc :
 ALS Vial : 22 Sample Multiplier: 1

Instrument :
 ECD_P
 ClientSampleId :
 AR1254ICC500

Integration File signal 1: autoint1.e
 Integration File signal 2: autoint2.e
 Quant Time: Jul 08 02:44:25 2025
 Quant Method : Z:\pestpcbsrv\HPCHEM1\ECD_P\methods\PP070825.M
 Quant Title : GC EXTRACTABLES
 QLast Update : Tue Jul 08 02:41:54 2025
 Response via : Initial Calibration
 Integrator: ChemStation

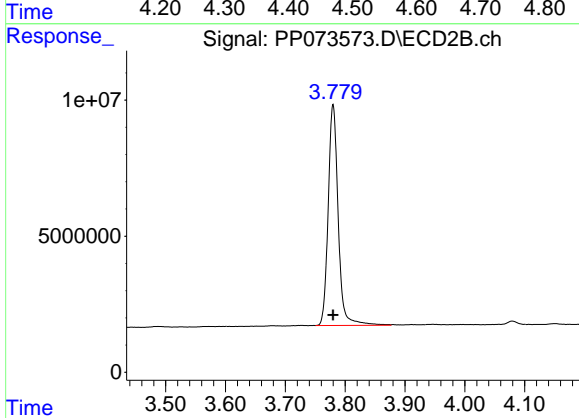
Volume Inj. : 2 µl
 Signal #1 Phase : ZB-MR1 Signal #2 Phase: ZB-MR2
 Signal #1 Info : 30Mx0.32mmx 0.50µ Signal #2 Info : 30M x 0.32mm x 0.25µm



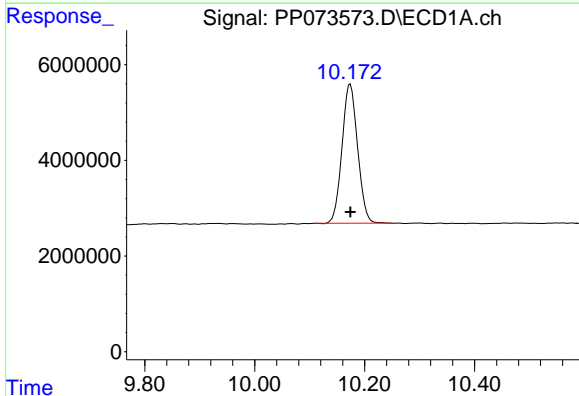


#1 Tetrachloro-m-xylene
 R.T.: 4.487 min
 Delta R.T.: 0.000 min
 Response: 70057774
 Conc: 50.00 ng/ml

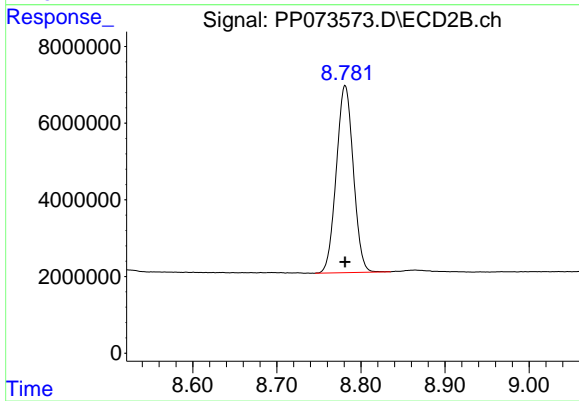
Instrument :
 ECD_P
 ClientSampleId :
 AR1254ICC500



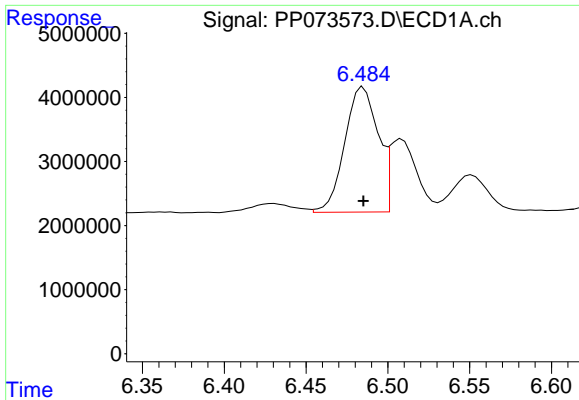
#1 Tetrachloro-m-xylene
 R.T.: 3.780 min
 Delta R.T.: 0.000 min
 Response: 94600770
 Conc: 50.00 ng/ml



#2 Decachlorobiphenyl
 R.T.: 10.174 min
 Delta R.T.: 0.000 min
 Response: 57264429
 Conc: 50.00 ng/ml



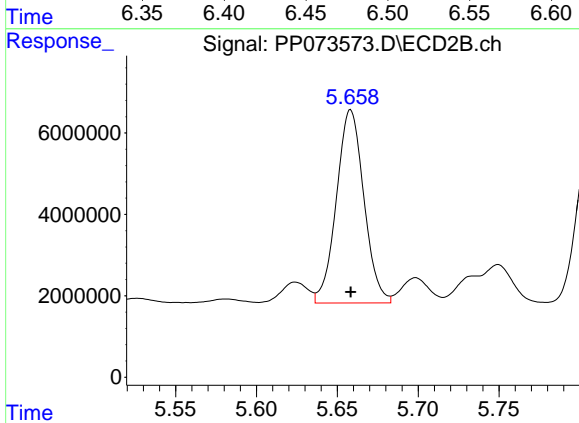
#2 Decachlorobiphenyl
 R.T.: 8.781 min
 Delta R.T.: 0.000 min
 Response: 68616932
 Conc: 50.00 ng/ml



#26 AR-1254-1

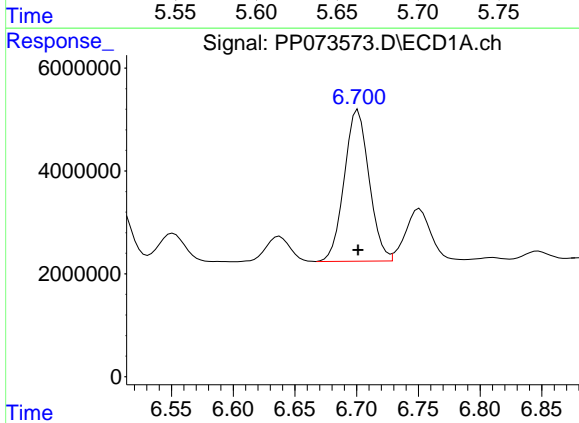
R.T.: 6.485 min
 Delta R.T.: 0.000 min
 Response: 27604602
 Conc: 500.00 ng/ml

Instrument :
 ECD_P
 ClientSampleId :
 AR1254ICC500



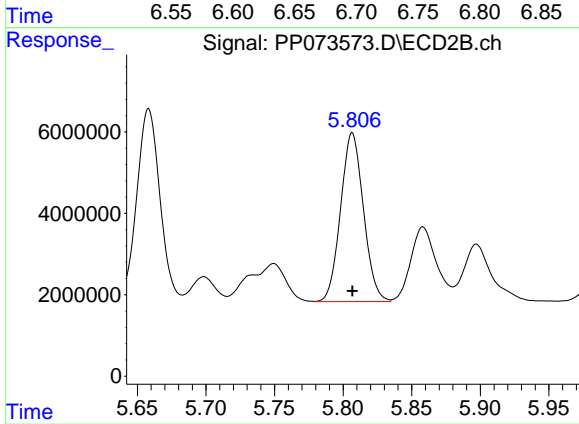
#26 AR-1254-1

R.T.: 5.658 min
 Delta R.T.: 0.000 min
 Response: 56161903
 Conc: 500.00 ng/ml



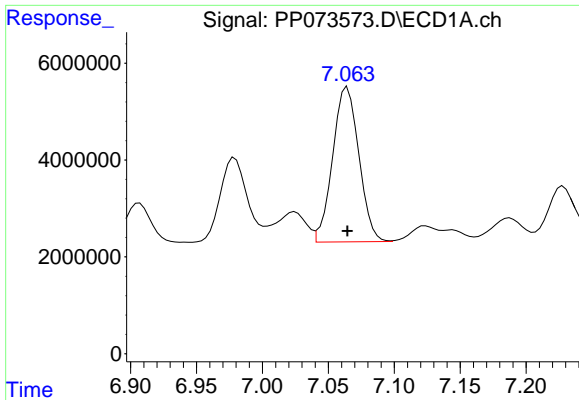
#27 AR-1254-2

R.T.: 6.701 min
 Delta R.T.: 0.000 min
 Response: 41269473
 Conc: 500.00 ng/ml



#27 AR-1254-2

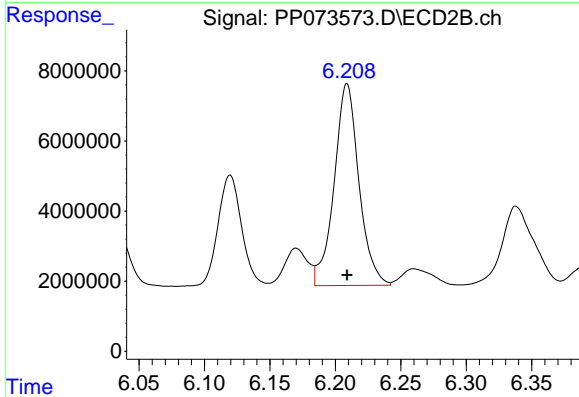
R.T.: 5.807 min
 Delta R.T.: 0.000 min
 Response: 48039880
 Conc: 500.00 ng/ml



#28 AR-1254-3

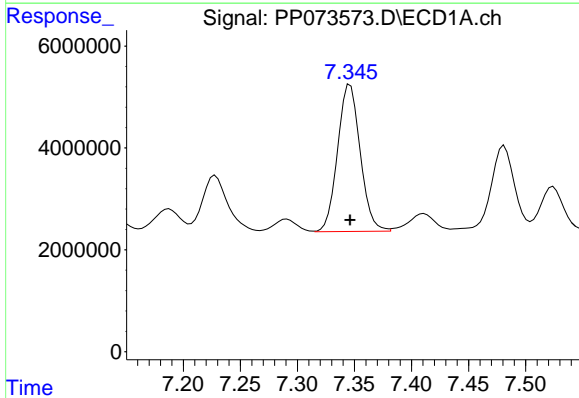
R.T.: 7.064 min
 Delta R.T.: 0.000 min
 Response: 44246186
 Conc: 500.00 ng/ml

Instrument :
 ECD_P
 ClientSampleId :
 AR1254ICC500



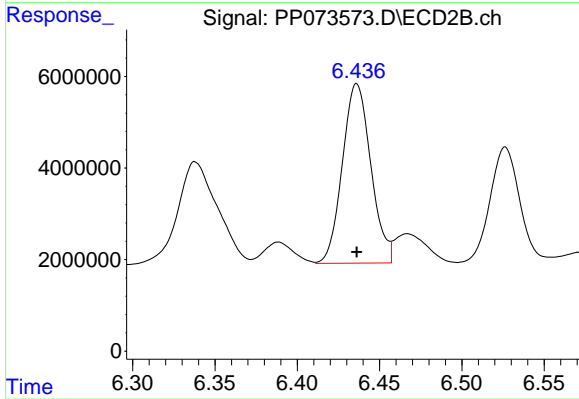
#28 AR-1254-3

R.T.: 6.209 min
 Delta R.T.: 0.000 min
 Response: 76049574
 Conc: 500.00 ng/ml



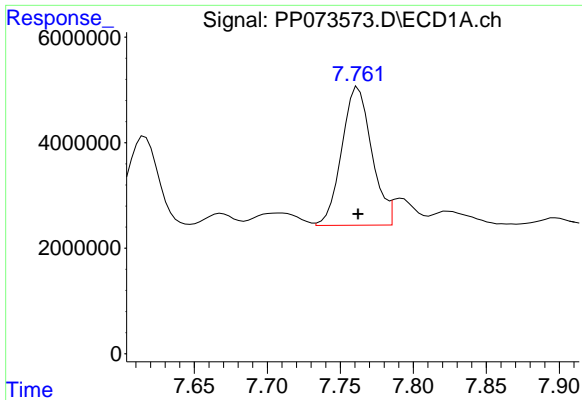
#29 AR-1254-4

R.T.: 7.346 min
 Delta R.T.: 0.000 min
 Response: 39796020
 Conc: 500.00 ng/ml



#29 AR-1254-4

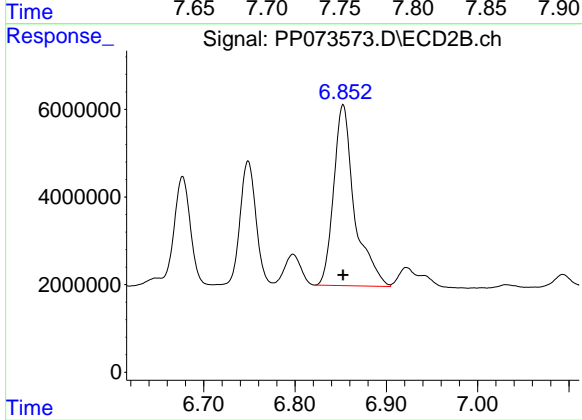
R.T.: 6.436 min
 Delta R.T.: 0.000 min
 Response: 47175510
 Conc: 500.00 ng/ml



#30 AR-1254-5

R.T.: 7.762 min
Delta R.T.: 0.000 min
Response: 37310051
Conc: 500.00 ng/ml

Instrument :
ECD_P
ClientSampleId :
AR1254ICC500



#30 AR-1254-5

R.T.: 6.853 min
Delta R.T.: 0.000 min
Response: 65368722
Conc: 500.00 ng/ml