

Data Path : Z:\pestpcbsrv\HPCHEM1\ECD\_P\Data\PP070825\  
 Data File : PP073575.D  
 Signal(s) : Signal #1: ECD1A.ch Signal #2: ECD2B.ch  
 Acq On : 08 Jul 2025 02:46  
 Operator : YP\AJ  
 Sample : AR1254ICC050  
 Misc :  
 ALS Vial : 24 Sample Multiplier: 1

Instrument :  
 ECD\_P  
 ClientSampleId :  
 AR1254ICC050

Integration File signal 1: autoint1.e  
 Integration File signal 2: autoint2.e  
 Quant Time: Jul 08 03:42:13 2025  
 Quant Method : Z:\pestpcbsrv\HPCHEM1\ECD\_P\methods\PP070825.M  
 Quant Title : GC EXTRACTABLES  
 QLast Update : Tue Jul 08 02:41:54 2025  
 Response via : Initial Calibration  
 Integrator: ChemStation

Volume Inj. : 2 µl  
 Signal #1 Phase : ZB-MR2 Signal #2 Phase: ZB-MR2  
 Signal #1 Info : 30Mx0.32mmx 0.50µ Signal #2 Info : 30M x 0.32mm x 0.25µm

Compound	RT#1	RT#2	Resp#1	Resp#2	ng/ml	ng/ml
-----						
System Monitoring Compounds						
1) SA Tetrachlo...	4.488	3.779	6938090	9721913	4.952	5.138
2) SA Decachlor...	10.178	8.780	5667149	6887289	4.948	5.019
Target Compounds						
26) L6 AR-1254-1	6.486	5.657	3346488	6452648	60.615	57.447
27) L6 AR-1254-2	6.703	5.806	4971490	5754555	60.232	59.894
28) L6 AR-1254-3	7.065	6.207	5174325	8163980	58.472	53.675
29) L6 AR-1254-4	7.349	6.436	5012264	4857854	62.974	51.487
30) L6 AR-1254-5	7.764	6.851	3548489	7039930	47.554	53.848
-----						

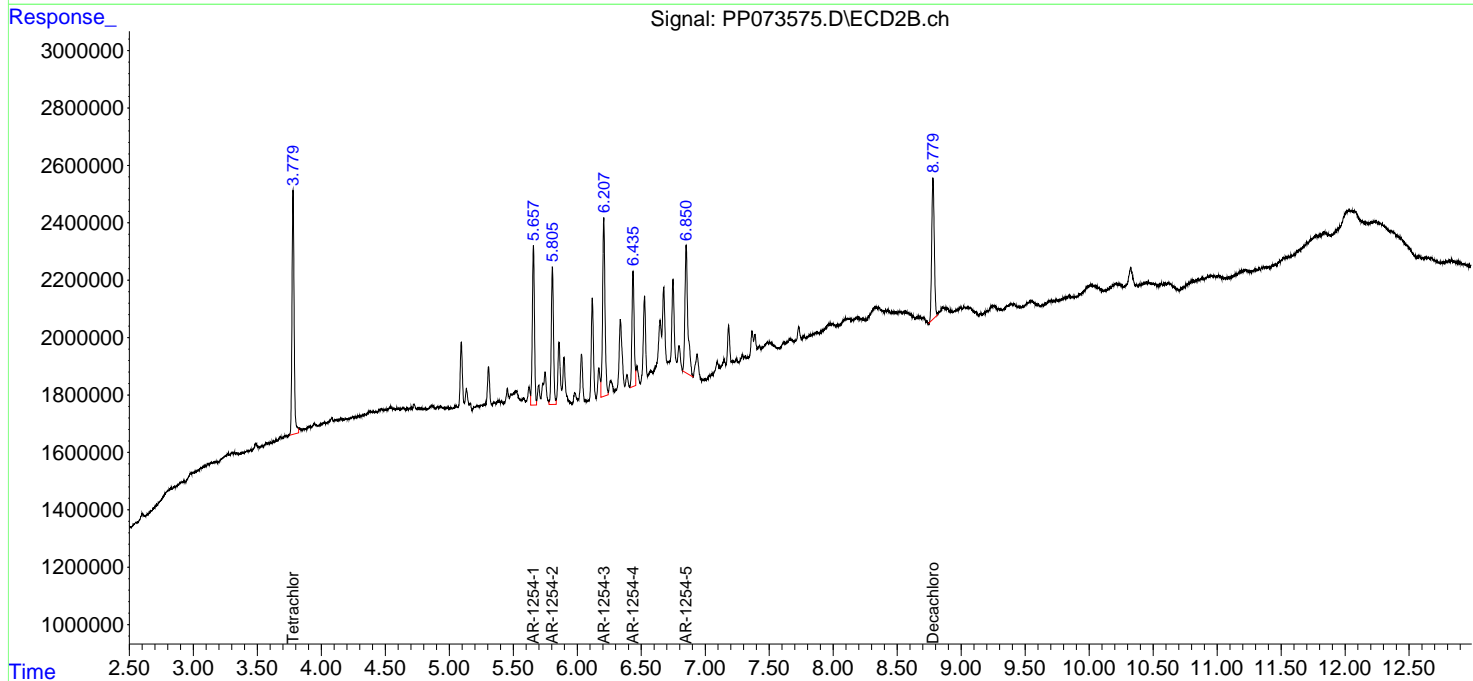
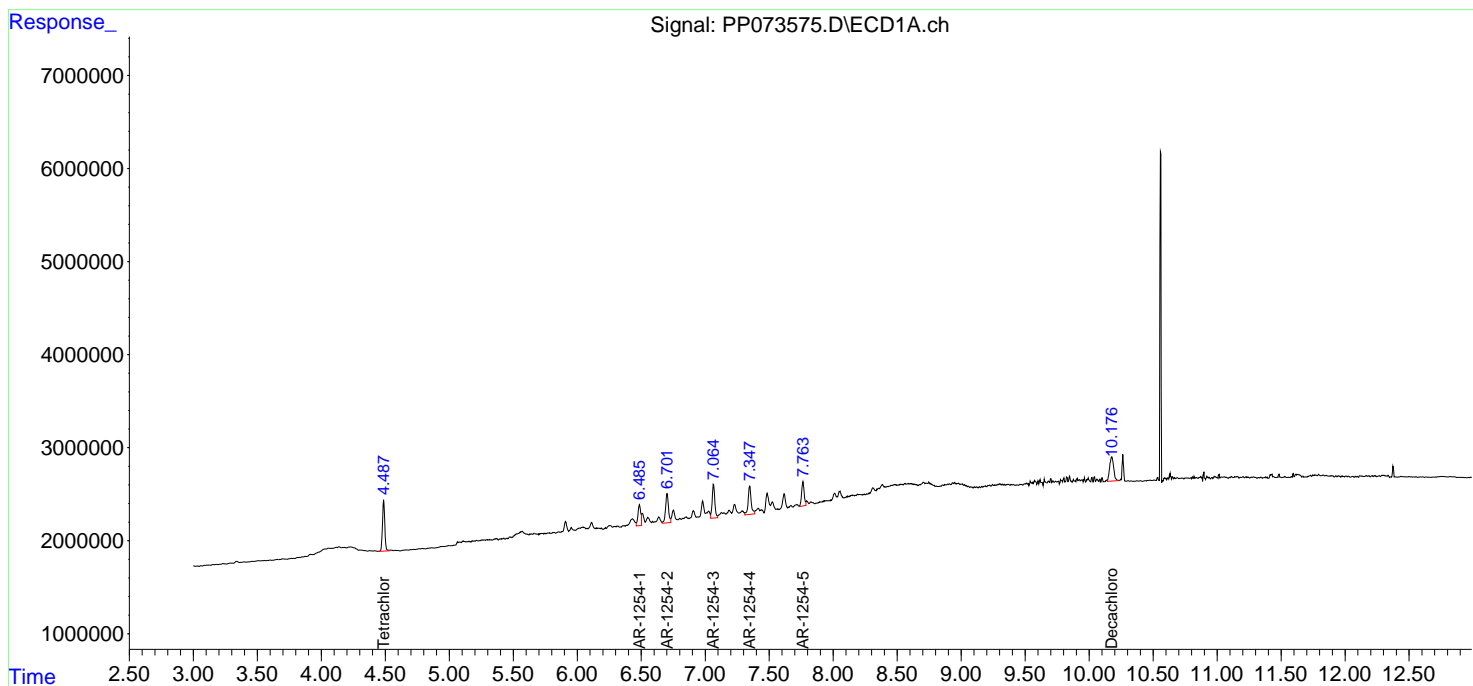
(f)=RT Delta > 1/2 Window (#)=Amounts differ by > 25% (m)=manual int.

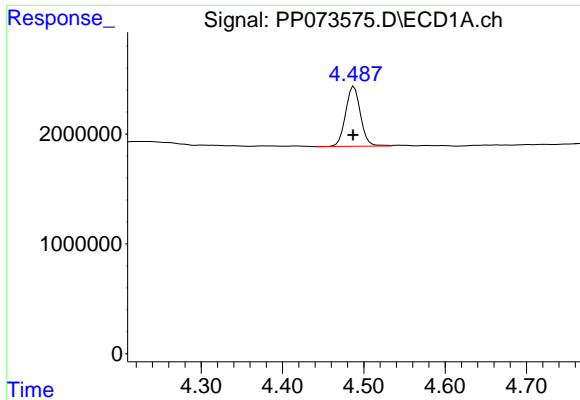
Data Path : Z:\pestpcbsrv\HPCHEM1\ECD\_P\Data\PP070825\  
 Data File : PP073575.D  
 Signal(s) : Signal #1: ECD1A.ch Signal #2: ECD2B.ch  
 Acq On : 08 Jul 2025 02:46  
 Operator : YP\AJ  
 Sample : AR1254ICC050  
 Misc :  
 ALS Vial : 24 Sample Multiplier: 1

Instrument :  
 ECD\_P  
 ClientSampleId :  
 AR1254ICC050

Integration File signal 1: autoint1.e  
 Integration File signal 2: autoint2.e  
 Quant Time: Jul 08 03:42:13 2025  
 Quant Method : Z:\pestpcbsrv\HPCHEM1\ECD\_P\methods\PP070825.M  
 Quant Title : GC EXTRACTABLES  
 QLast Update : Tue Jul 08 02:41:54 2025  
 Response via : Initial Calibration  
 Integrator: ChemStation

Volume Inj. : 2 µl  
 Signal #1 Phase : ZB-MR1 Signal #2 Phase: ZB-MR2  
 Signal #1 Info : 30Mx0.32mmx 0.50µ Signal #2 Info : 30M x 0.32mm x 0.25µm

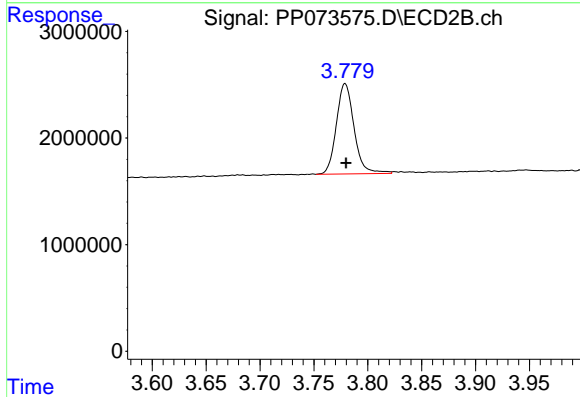




#1 Tetrachloro-m-xylene

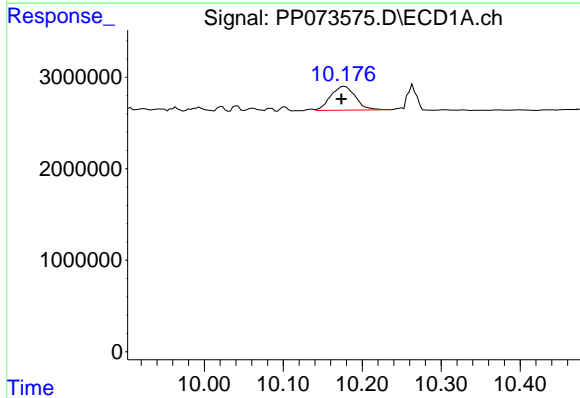
R.T.: 4.488 min  
 Delta R.T.: 0.001 min  
 Response: 6938090  
 Conc: 4.95 ng/ml

Instrument :  
 ECD\_P  
 ClientSampleId :  
 AR1254IC050



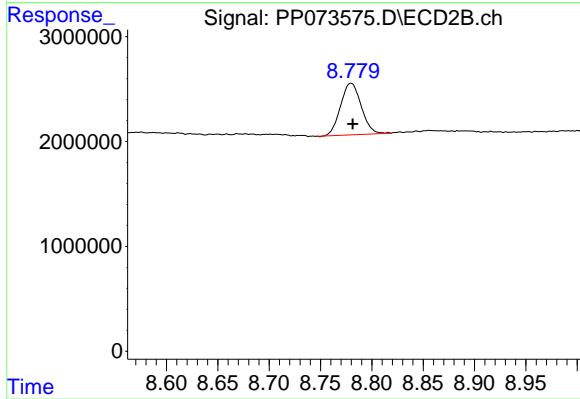
#1 Tetrachloro-m-xylene

R.T.: 3.779 min  
 Delta R.T.: 0.000 min  
 Response: 9721913  
 Conc: 5.14 ng/ml



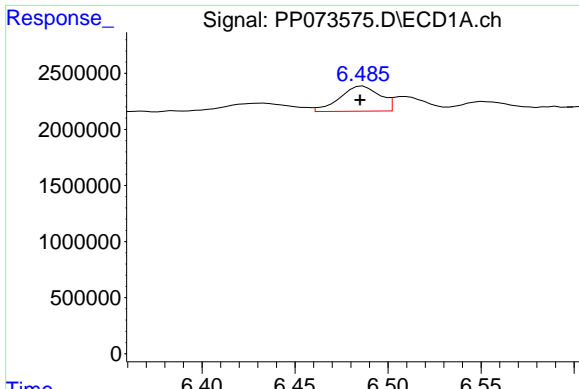
#2 Decachlorobiphenyl

R.T.: 10.178 min  
 Delta R.T.: 0.004 min  
 Response: 5667149  
 Conc: 4.95 ng/ml



#2 Decachlorobiphenyl

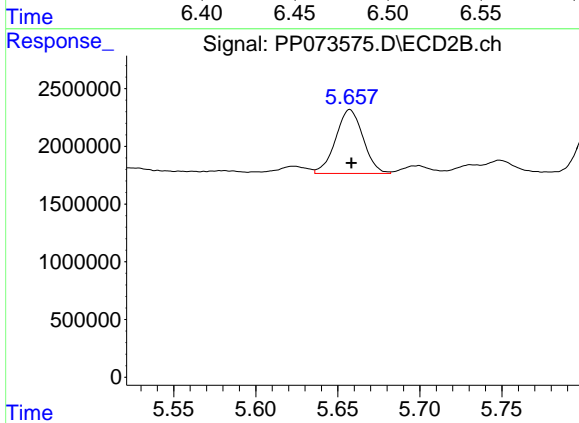
R.T.: 8.780 min  
 Delta R.T.: -0.002 min  
 Response: 6887289  
 Conc: 5.02 ng/ml



#26 AR-1254-1

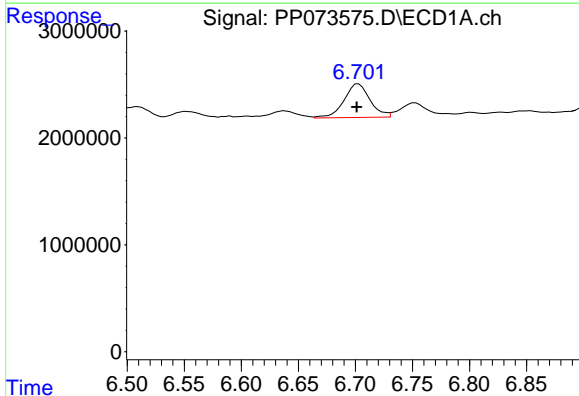
R.T.: 6.486 min  
 Delta R.T.: 0.002 min  
 Response: 3346488  
 Conc: 60.61 ng/ml

Instrument :  
 ECD\_P  
 ClientSampleId :  
 AR1254ICC050



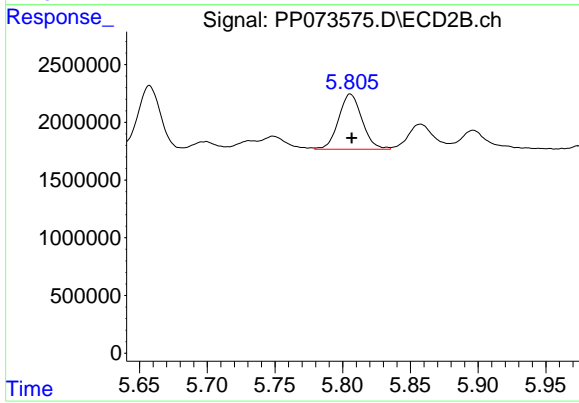
#26 AR-1254-1

R.T.: 5.657 min  
 Delta R.T.: 0.000 min  
 Response: 6452648  
 Conc: 57.45 ng/ml



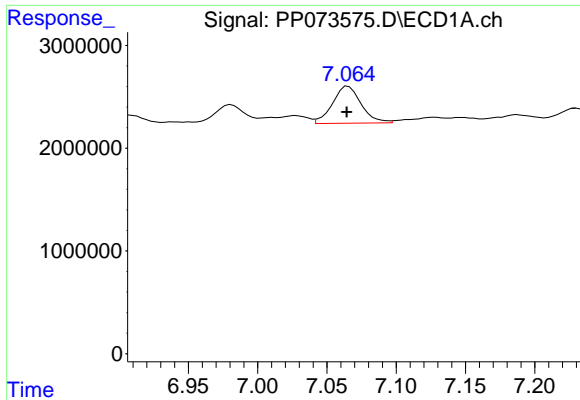
#27 AR-1254-2

R.T.: 6.703 min  
 Delta R.T.: 0.002 min  
 Response: 4971490  
 Conc: 60.23 ng/ml



#27 AR-1254-2

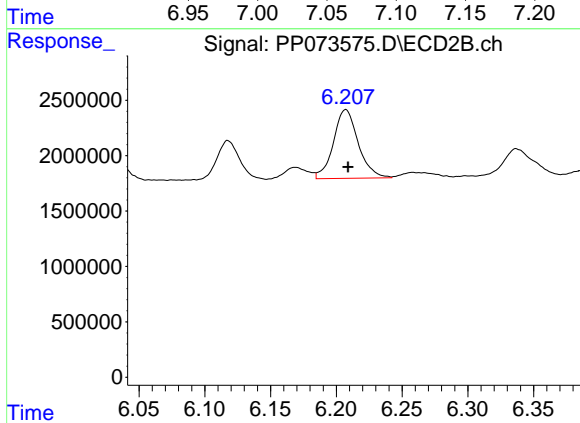
R.T.: 5.806 min  
 Delta R.T.: 0.000 min  
 Response: 5754555  
 Conc: 59.89 ng/ml



#28 AR-1254-3

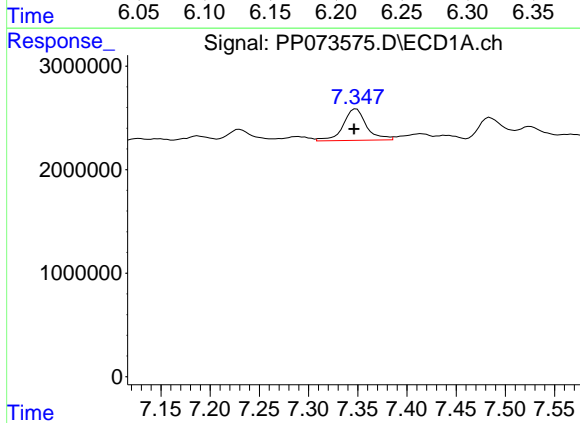
R.T.: 7.065 min  
 Delta R.T.: 0.000 min  
 Response: 5174325  
 Conc: 58.47 ng/ml

Instrument :  
 ECD\_P  
 ClientSampleId :  
 AR1254ICC050



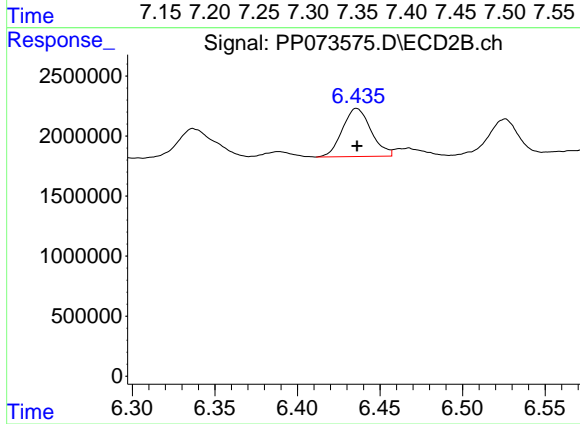
#28 AR-1254-3

R.T.: 6.207 min  
 Delta R.T.: -0.002 min  
 Response: 8163980  
 Conc: 53.68 ng/ml



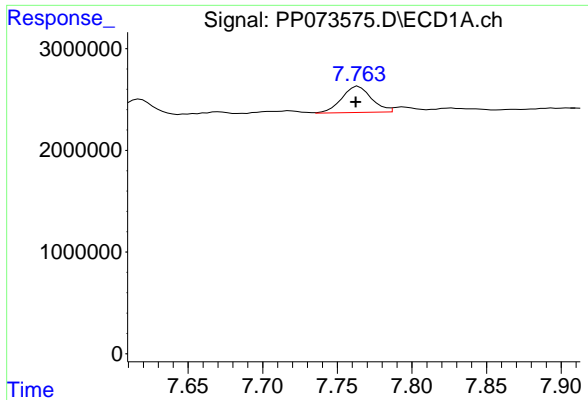
#29 AR-1254-4

R.T.: 7.349 min  
 Delta R.T.: 0.002 min  
 Response: 5012264  
 Conc: 62.97 ng/ml



#29 AR-1254-4

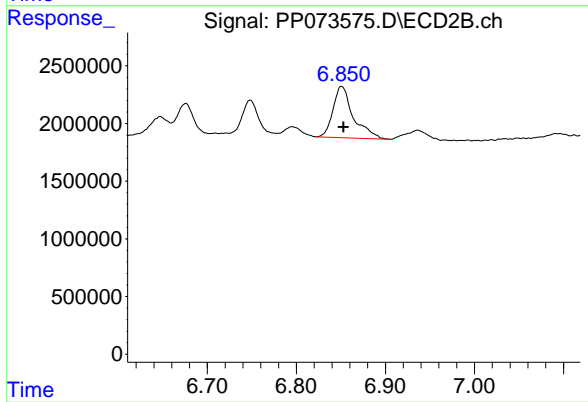
R.T.: 6.436 min  
 Delta R.T.: 0.000 min  
 Response: 4857854  
 Conc: 51.49 ng/ml



#30 AR-1254-5

R.T.: 7.764 min  
Delta R.T.: 0.002 min  
Response: 3548489  
Conc: 47.55 ng/ml

Instrument :  
ECD\_P  
ClientSampleId :  
AR1254ICC050



#30 AR-1254-5

R.T.: 6.851 min  
Delta R.T.: -0.002 min  
Response: 7039930  
Conc: 53.85 ng/ml