

Data Path : Z:\pestpcbsrv\HPCHEM1\ECD_P\Data\PP070825\
 Data File : PP073577.D
 Signal(s) : Signal #1: ECD1A.ch Signal #2: ECD2B.ch
 Acq On : 08 Jul 2025 03:19
 Operator : YP\AJ
 Sample : AR1268ICC1000
 Misc :
 ALS Vial : 26 Sample Multiplier: 1

Instrument :
 ECD_P
 ClientSampleId :
 AR1268ICC1000

Integration File signal 1: autoint1.e
 Integration File signal 2: autoint2.e
 Quant Time: Jul 08 04:41:25 2025
 Quant Method : Z:\pestpcbsrv\HPCHEM1\ECD_P\methods\PP070825.M
 Quant Title : GC EXTRACTABLES
 QLast Update : Tue Jul 08 04:40:39 2025
 Response via : Initial Calibration
 Integrator: ChemStation

Volume Inj. : 2 µl
 Signal #1 Phase : ZB-MR1 Signal #2 Phase: ZB-MR2
 Signal #1 Info : 30Mx0.32mmx 0.50µ Signal #2 Info : 30M x 0.32mm x 0.25µm

Compound	RT#1	RT#2	Resp#1	Resp#2	ng/ml	ng/ml

System Monitoring Compounds						
1) SA Tetrachlo...	4.487	3.780	135.2E6	186.6E6	95.477	96.310
2) SA Decachlor...	10.175	8.780	197.8E6	239.6E6	96.151	94.525
Target Compounds						
41) L9 AR-1268-1	8.691	7.669	220.6E6	290.6E6	967.069	944.084
42) L9 AR-1268-2	8.784	7.736	188.8E6	254.1E6	971.974	949.819
43) L9 AR-1268-3	9.012	7.937	161.3E6	211.6E6	967.680	931.099
44) L9 AR-1268-4	9.428	8.231	68937885	89640321	991.083	941.420
45) L9 AR-1268-5	9.841	8.527	477.6E6	595.3E6	984.517	956.339

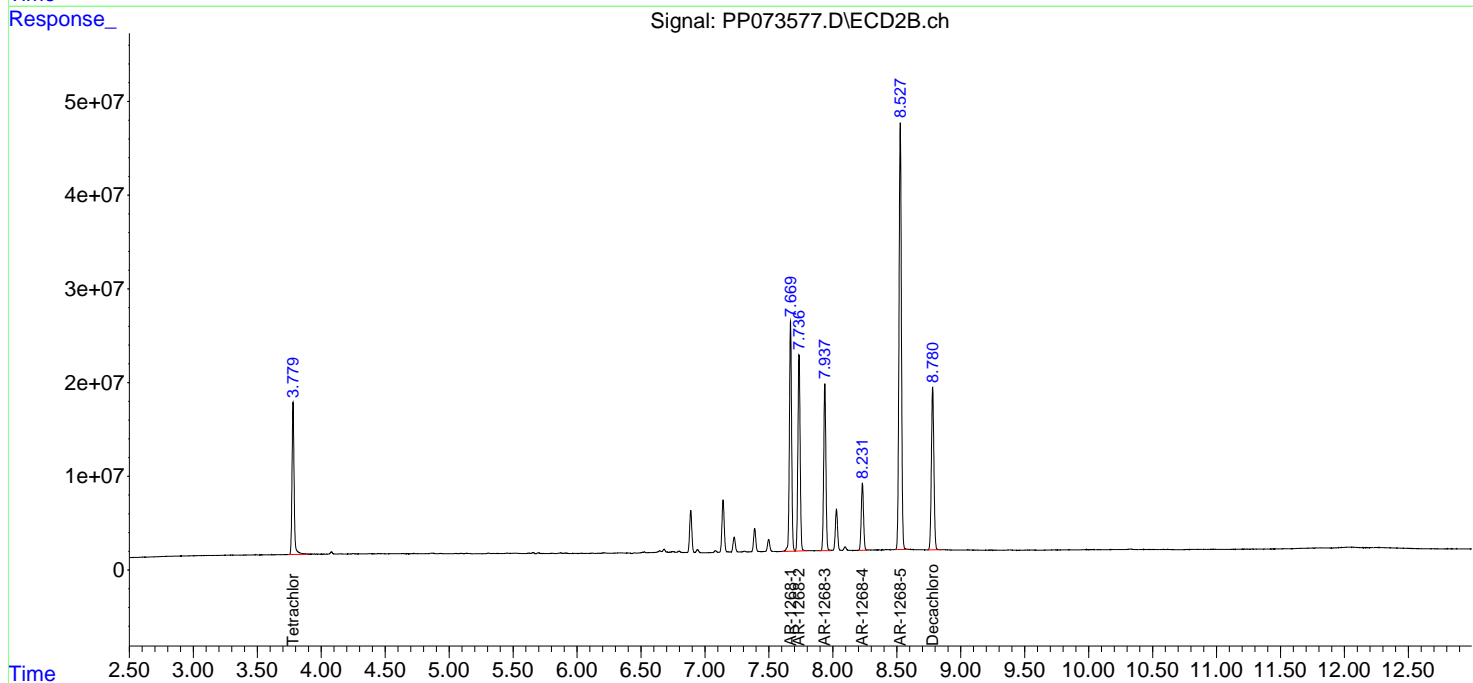
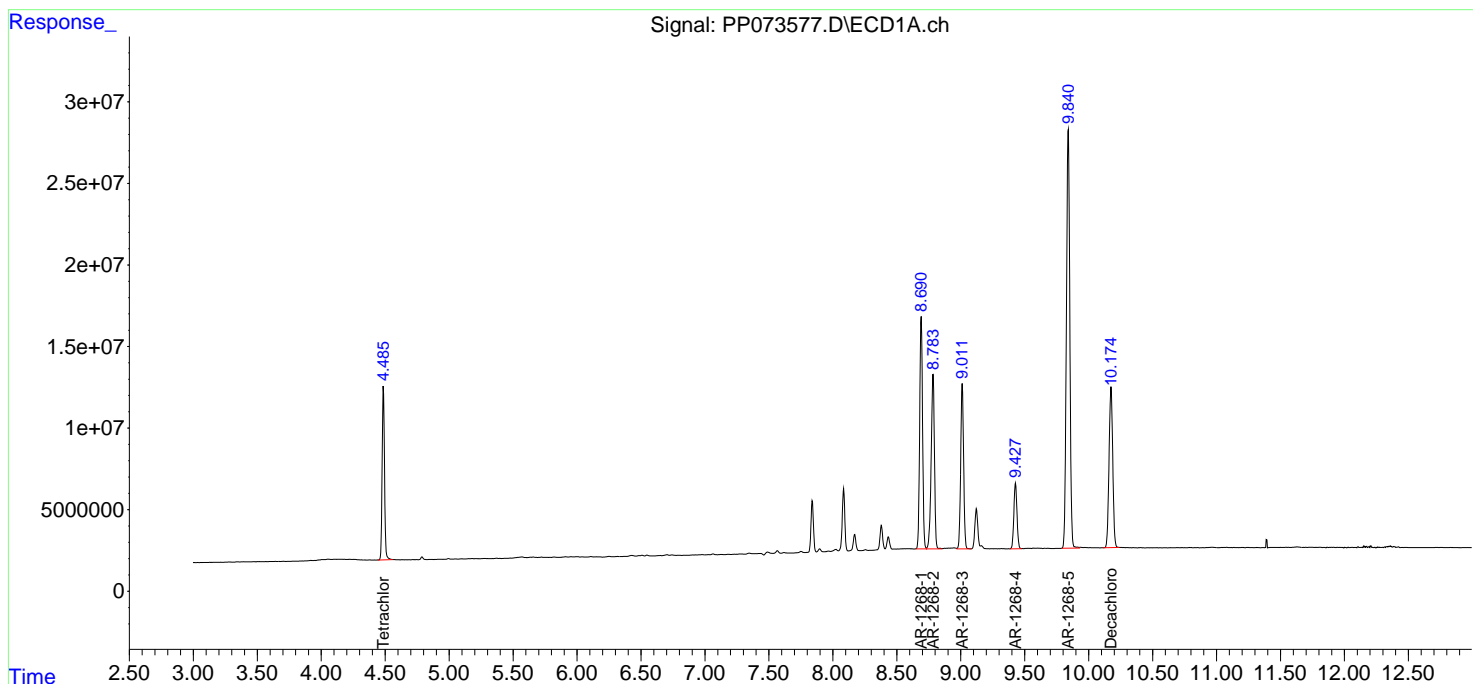
(f)=RT Delta > 1/2 Window (#)=Amounts differ by > 25% (m)=manual int.

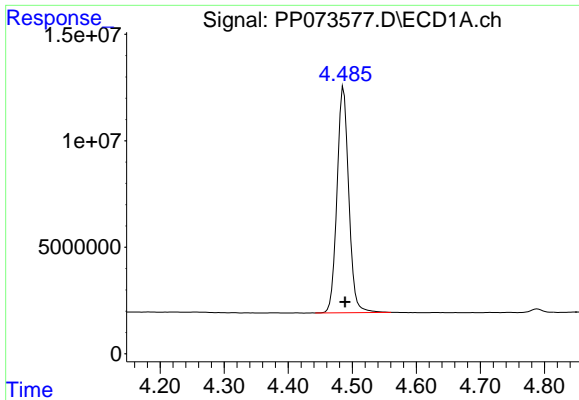
Data Path : Z:\pestpcbsrv\HPCHEM1\ECD_P\Data\PP070825\
 Data File : PP073577.D
 Signal(s) : Signal #1: ECD1A.ch Signal #2: ECD2B.ch
 Acq On : 08 Jul 2025 03:19
 Operator : YP\AJ
 Sample : AR1268ICC1000
 Misc :
 ALS Vial : 26 Sample Multiplier: 1

Instrument :
 ECD_P
 ClientSampleId :
 AR1268ICC1000

Integration File signal 1: autoint1.e
 Integration File signal 2: autoint2.e
 Quant Time: Jul 08 04:41:25 2025
 Quant Method : Z:\pestpcbsrv\HPCHEM1\ECD_P\methods\PP070825.M
 Quant Title : GC EXTRACTABLES
 QLast Update : Tue Jul 08 04:40:39 2025
 Response via : Initial Calibration
 Integrator: ChemStation

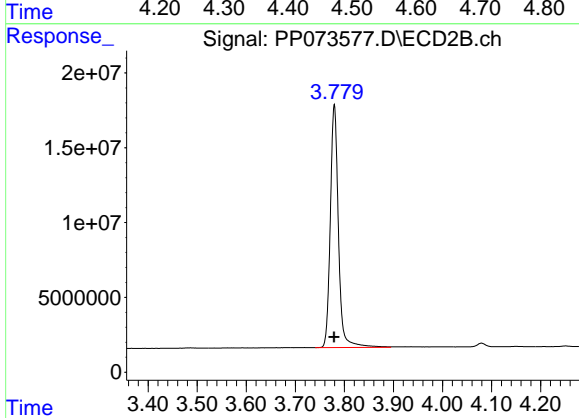
Volume Inj. : 2 µl
 Signal #1 Phase : ZB-MR1 Signal #2 Phase: ZB-MR2
 Signal #1 Info : 30Mx0.32mmx 0.50µm Signal #2 Info : 30M x 0.32mm x 0.25µm



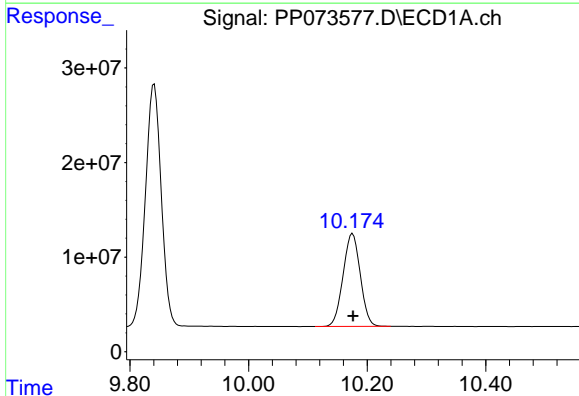


#1 Tetrachloro-m-xylene
 R.T.: 4.487 min
 Delta R.T.: -0.002 min
 Response: 135177400
 Conc: 95.48 ng/ml

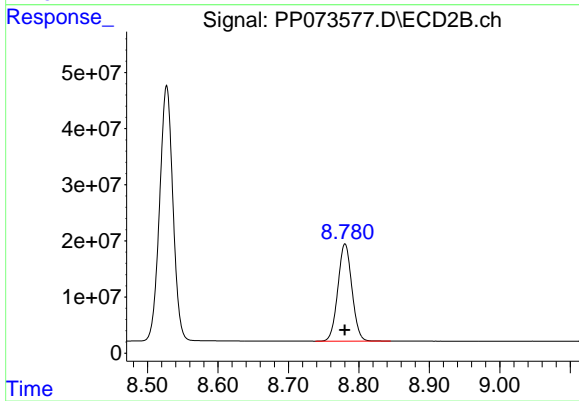
Instrument :
 ECD_P
 ClientSampleId :
 AR1268ICC1000



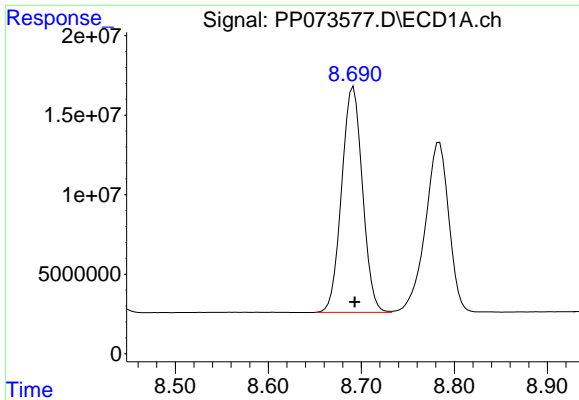
#1 Tetrachloro-m-xylene
 R.T.: 3.780 min
 Delta R.T.: 0.000 min
 Response: 186628635
 Conc: 96.31 ng/ml



#2 Decachlorobiphenyl
 R.T.: 10.175 min
 Delta R.T.: -0.001 min
 Response: 197787493
 Conc: 96.15 ng/ml



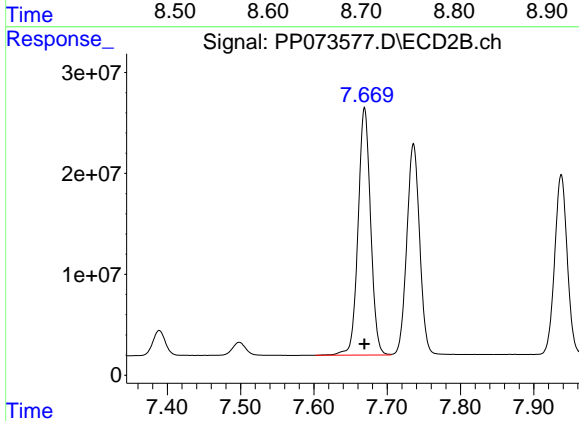
#2 Decachlorobiphenyl
 R.T.: 8.780 min
 Delta R.T.: 0.000 min
 Response: 239622927
 Conc: 94.53 ng/ml



#41 AR-1268-1

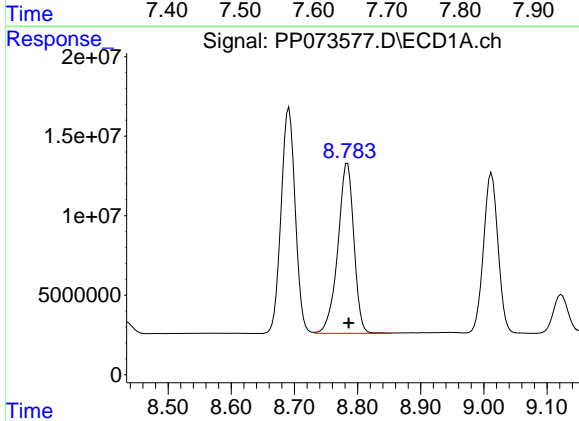
R.T.: 8.691 min
 Delta R.T.: -0.001 min
 Response: 220572869
 Conc: 967.07 ng/ml

Instrument :
 ECD_P
 ClientSampleId :
 AR1268ICC1000



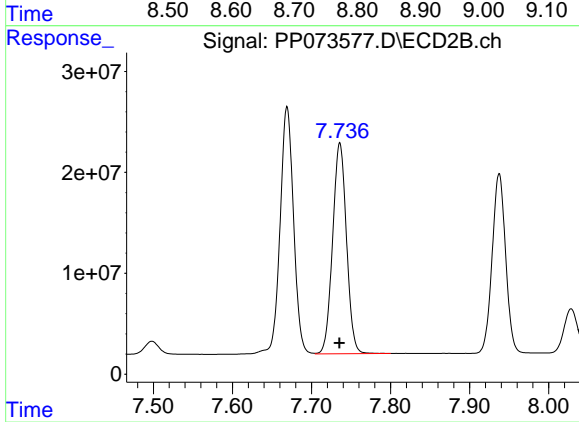
#41 AR-1268-1

R.T.: 7.669 min
 Delta R.T.: 0.000 min
 Response: 290584667
 Conc: 944.08 ng/ml



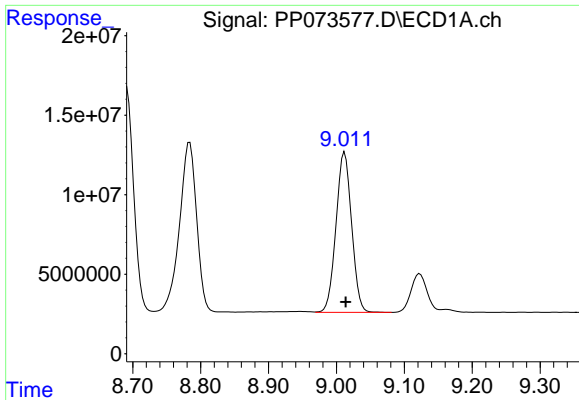
#42 AR-1268-2

R.T.: 8.784 min
 Delta R.T.: -0.002 min
 Response: 188785361
 Conc: 971.97 ng/ml



#42 AR-1268-2

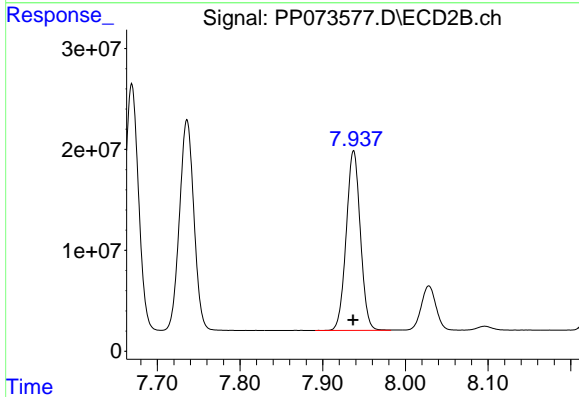
R.T.: 7.736 min
 Delta R.T.: 0.000 min
 Response: 254148086
 Conc: 949.82 ng/ml



#43 AR-1268-3

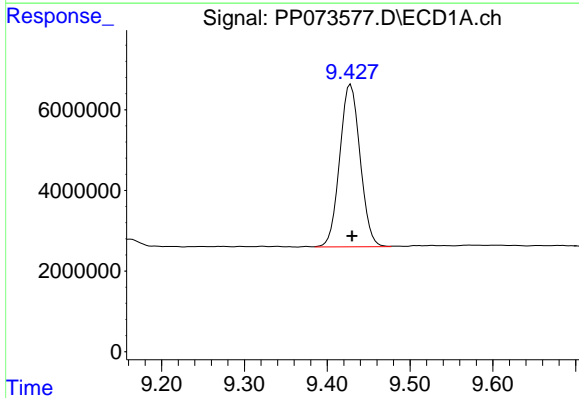
R.T.: 9.012 min
 Delta R.T.: -0.002 min
 Response: 161320167
 Conc: 967.68 ng/ml

Instrument :
 ECD_P
 ClientSampleId :
 AR1268ICC1000



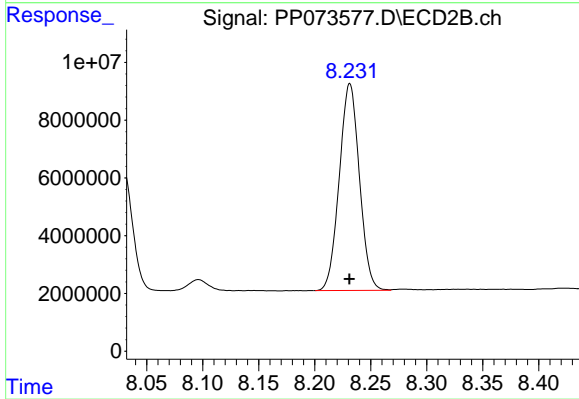
#43 AR-1268-3

R.T.: 7.937 min
 Delta R.T.: 0.000 min
 Response: 211648098
 Conc: 931.10 ng/ml



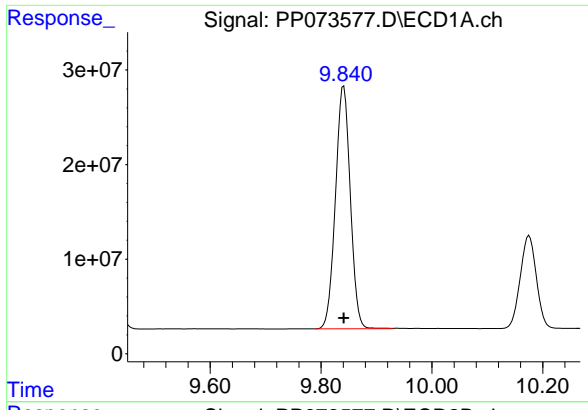
#44 AR-1268-4

R.T.: 9.428 min
 Delta R.T.: -0.002 min
 Response: 68937885
 Conc: 991.08 ng/ml



#44 AR-1268-4

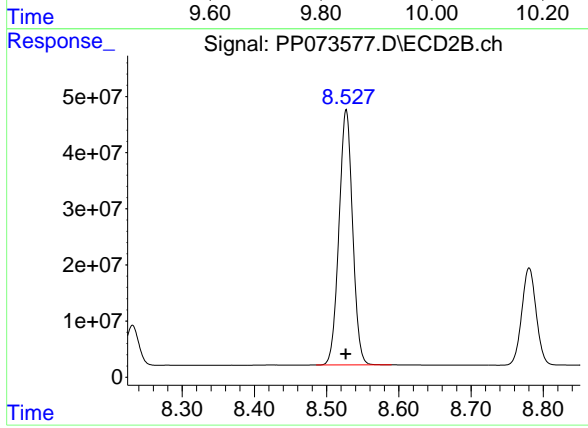
R.T.: 8.231 min
 Delta R.T.: 0.000 min
 Response: 89640321
 Conc: 941.42 ng/ml



#45 AR-1268-5

R.T.: 9.841 min
Delta R.T.: 0.000 min
Response: 477643268
Conc: 984.52 ng/ml

Instrument :
ECD_P
ClientSampleId :
AR1268ICC1000



#45 AR-1268-5

R.T.: 8.527 min
Delta R.T.: 0.000 min
Response: 595257746
Conc: 956.34 ng/ml