

Data Path : Z:\pestpcbsrv\HPCHEM1\ECD_P\Data\PP070825\
 Data File : PP073578.D
 Signal(s) : Signal #1: ECD1A.ch Signal #2: ECD2B.ch
 Acq On : 08 Jul 2025 03:35
 Operator : YP\AJ
 Sample : AR1268ICC750
 Misc :
 ALS Vial : 27 Sample Multiplier: 1

Instrument :
 ECD_P
ClientSampleId :
 AR1268ICC750

Integration File signal 1: autoint1.e
 Integration File signal 2: autoint2.e
 Quant Time: Jul 08 04:41:34 2025
 Quant Method : Z:\pestpcbsrv\HPCHEM1\ECD_P\methods\PP070825.M
 Quant Title : GC EXTRACTABLES
 QLast Update : Tue Jul 08 04:40:39 2025
 Response via : Initial Calibration
 Integrator: ChemStation

Volume Inj. : 2 µl
 Signal #1 Phase : ZB-MR1 Signal #2 Phase: ZB-MR2
 Signal #1 Info : 30Mx0.32mmx 0.50µ Signal #2 Info : 30M x 0.32mm x 0.25µm

| Compound | RT#1 | RT#2 | Resp#1 | Resp#2 | ng/ml | ng/ml |
|-----------------------------|--------|-------|----------|----------|---------|---------|
| ----- | | | | | | |
| System Monitoring Compounds | | | | | | |
| 1) SA Tetrachlo... | 4.486 | 3.779 | 104.3E6 | 146.5E6 | 73.649 | 75.624 |
| 2) SA Decachlor... | 10.176 | 8.780 | 151.6E6 | 191.8E6 | 73.695 | 75.646 |
| Target Compounds | | | | | | |
| 41) L9 AR-1268-1 | 8.691 | 7.668 | 168.8E6 | 230.7E6 | 740.295 | 749.493 |
| 42) L9 AR-1268-2 | 8.785 | 7.735 | 144.0E6 | 200.8E6 | 741.630 | 750.427 |
| 43) L9 AR-1268-3 | 9.013 | 7.936 | 123.3E6 | 169.4E6 | 739.524 | 745.141 |
| 44) L9 AR-1268-4 | 9.430 | 8.230 | 52353473 | 71323535 | 752.658 | 749.054 |
| 45) L9 AR-1268-5 | 9.841 | 8.526 | 354.6E6 | 478.2E6 | 730.874 | 768.335 |
| ----- | | | | | | |

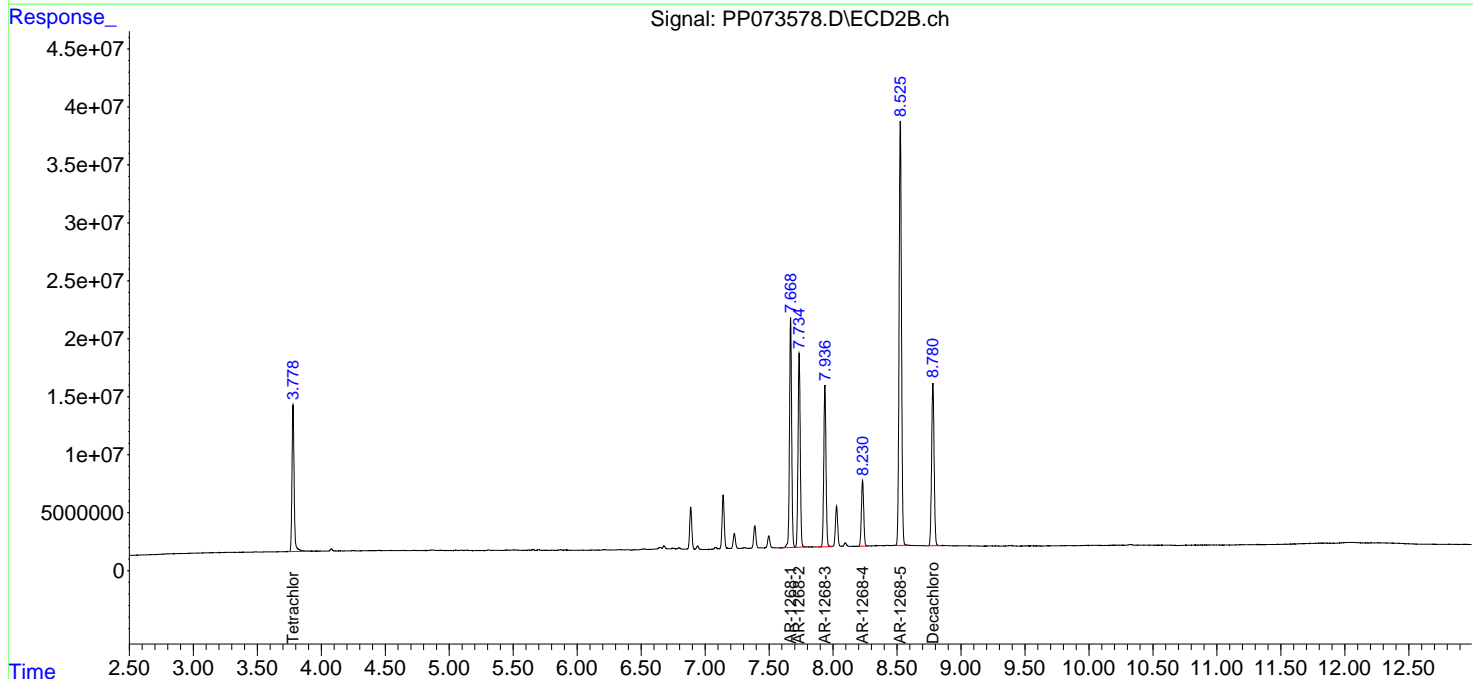
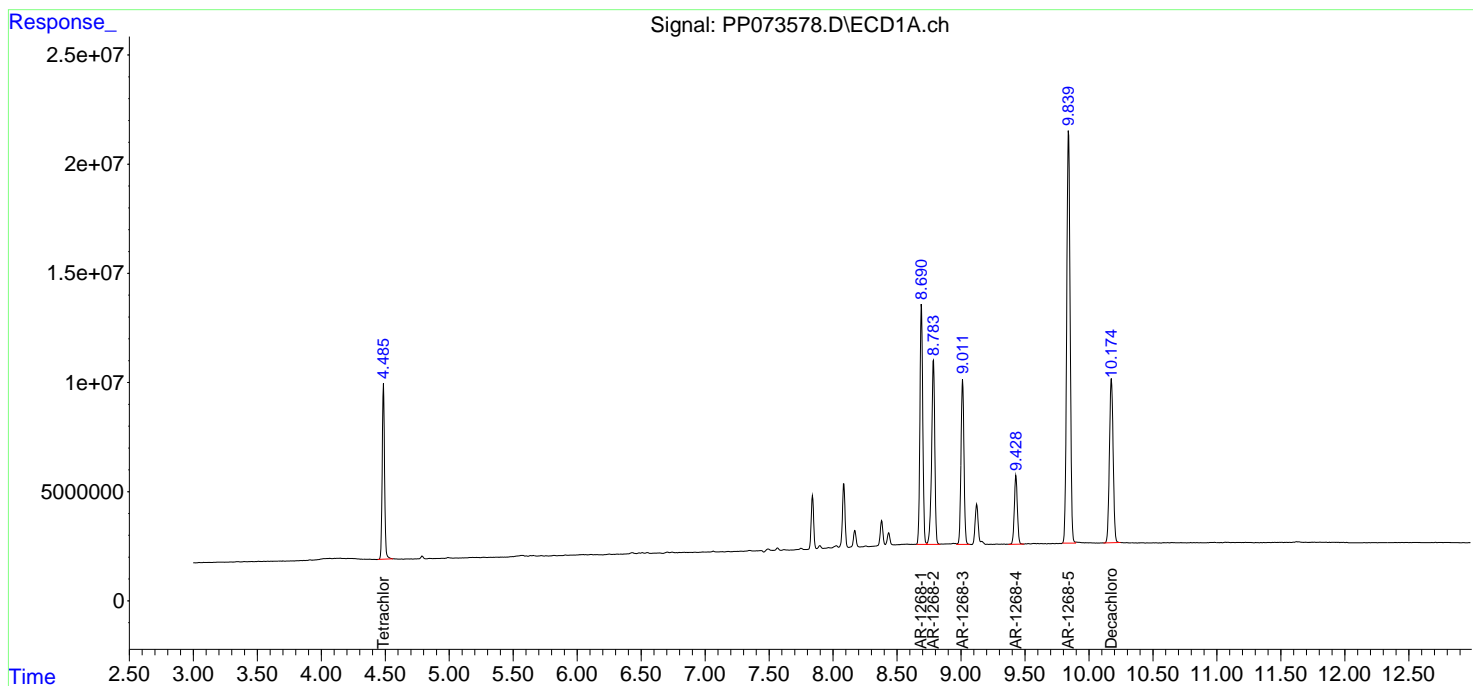
(f)=RT Delta > 1/2 Window (#)=Amounts differ by > 25% (m)=manual int.

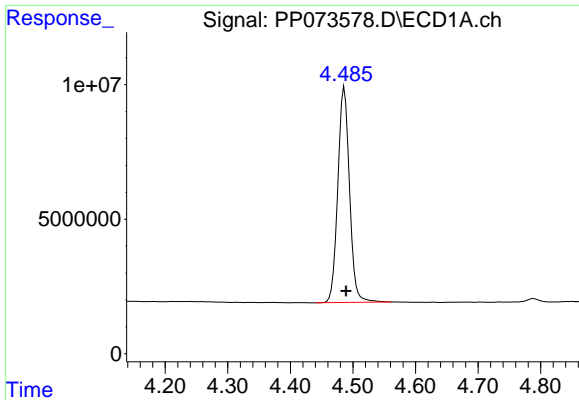
Data Path : Z:\pestpcbsrv\HPCHEM1\ECD_P\Data\PP070825\
 Data File : PP073578.D
 Signal(s) : Signal #1: ECD1A.ch Signal #2: ECD2B.ch
 Acq On : 08 Jul 2025 03:35
 Operator : YP\AJ
 Sample : AR1268ICC750
 Misc :
 ALS Vial : 27 Sample Multiplier: 1

Instrument :
 ECD_P
 ClientSampleId :
 AR1268ICC750

Integration File signal 1: autoint1.e
 Integration File signal 2: autoint2.e
 Quant Time: Jul 08 04:41:34 2025
 Quant Method : Z:\pestpcbsrv\HPCHEM1\ECD_P\methods\PP070825.M
 Quant Title : GC EXTRACTABLES
 QLast Update : Tue Jul 08 04:40:39 2025
 Response via : Initial Calibration
 Integrator: ChemStation

Volume Inj. : 2 µl
 Signal #1 Phase : ZB-MR1 Signal #2 Phase: ZB-MR2
 Signal #1 Info : 30Mx0.32mmx 0.50µm Signal #2 Info : 30M x 0.32mm x 0.25µm

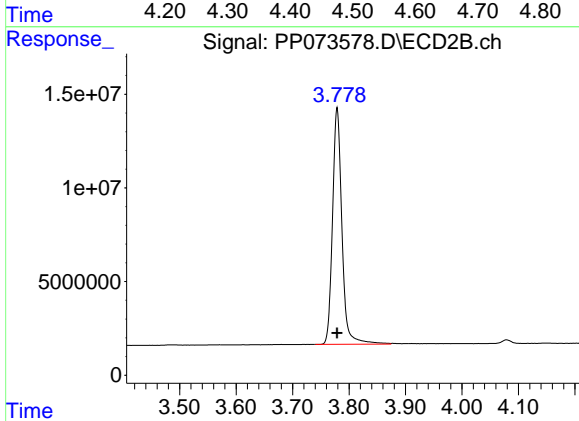




#1 Tetrachloro-m-xylene

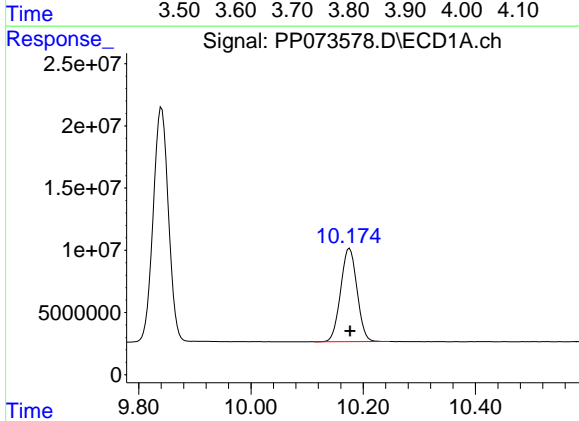
R.T.: 4.486 min
 Delta R.T.: -0.003 min
 Response: 104273280
 Conc: 73.65 ng/ml

Instrument :
 ECD_P
 ClientSampleId :
 AR1268ICC750



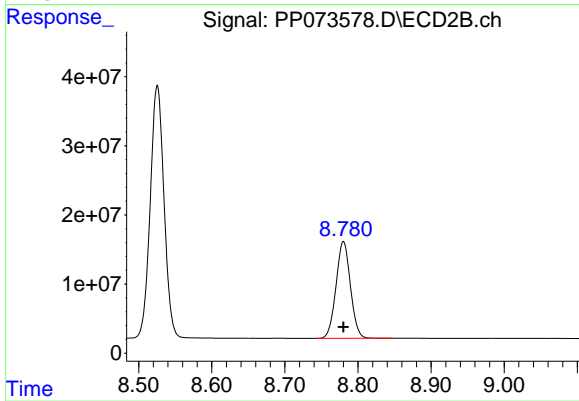
#1 Tetrachloro-m-xylene

R.T.: 3.779 min
 Delta R.T.: 0.000 min
 Response: 146543238
 Conc: 75.62 ng/ml



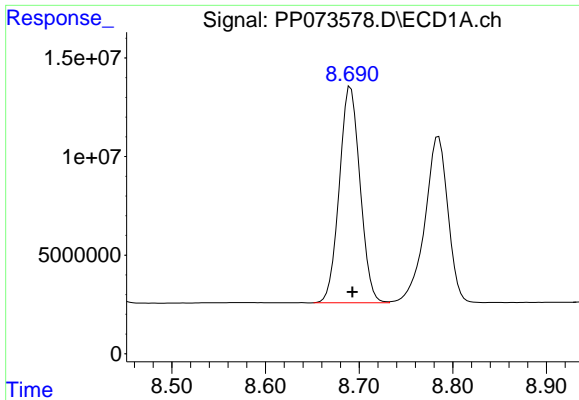
#2 Decachlorobiphenyl

R.T.: 10.176 min
 Delta R.T.: 0.000 min
 Response: 151594121
 Conc: 73.69 ng/ml



#2 Decachlorobiphenyl

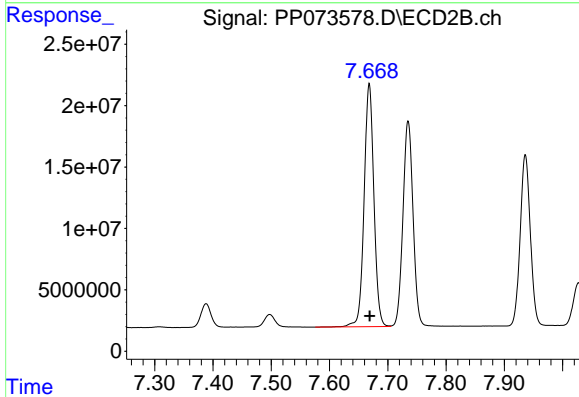
R.T.: 8.780 min
 Delta R.T.: 0.000 min
 Response: 191764517
 Conc: 75.65 ng/ml



#41 AR-1268-1

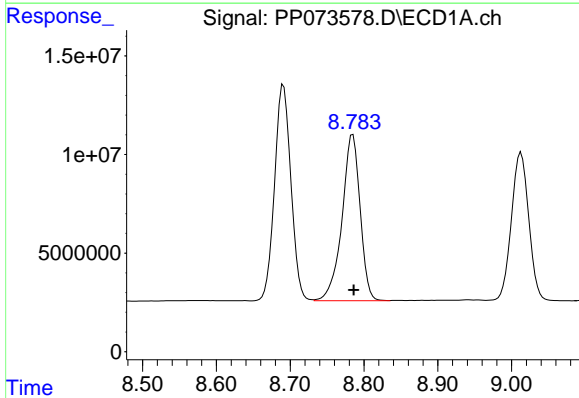
R.T.: 8.691 min
 Delta R.T.: -0.002 min
 Response: 168849400
 Conc: 740.29 ng/ml

Instrument :
 ECD_P
 ClientSampleId :
 AR1268ICC750



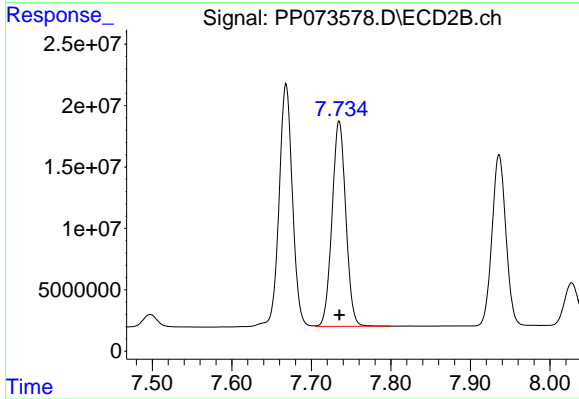
#41 AR-1268-1

R.T.: 7.668 min
 Delta R.T.: 0.000 min
 Response: 230690543
 Conc: 749.49 ng/ml



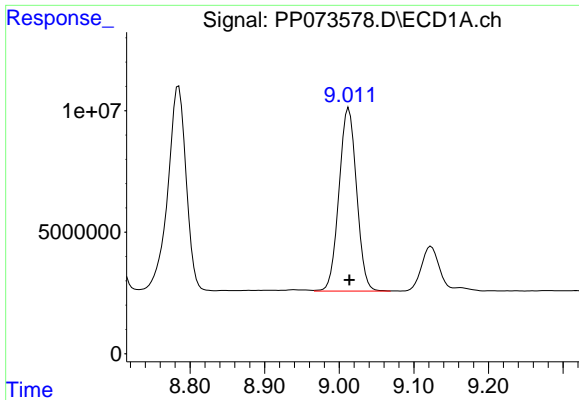
#42 AR-1268-2

R.T.: 8.785 min
 Delta R.T.: -0.001 min
 Response: 144045759
 Conc: 741.63 ng/ml



#42 AR-1268-2

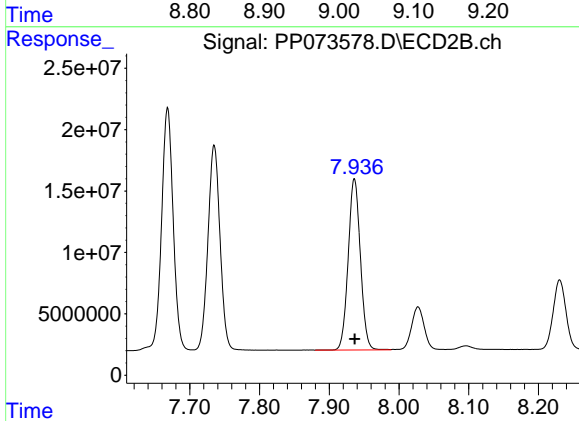
R.T.: 7.735 min
 Delta R.T.: 0.000 min
 Response: 200795854
 Conc: 750.43 ng/ml



#43 AR-1268-3

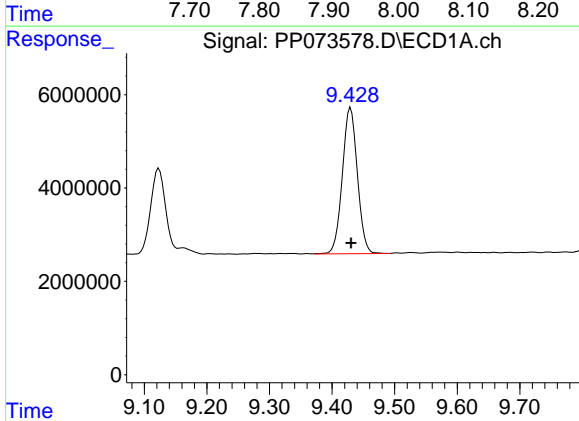
R.T.: 9.013 min
 Delta R.T.: 0.000 min
 Response: 123284607
 Conc: 739.52 ng/ml

Instrument :
 ECD_P
 ClientSampleId :
 AR1268ICC750



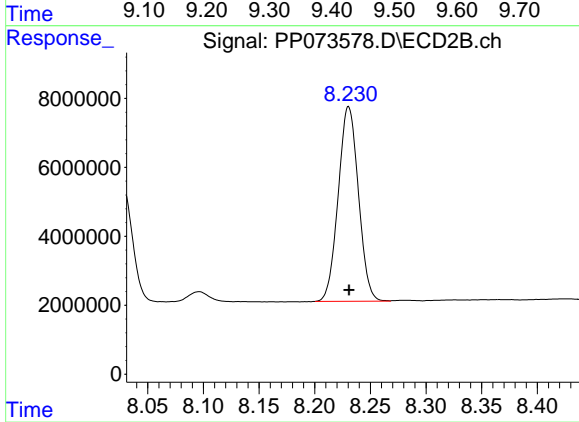
#43 AR-1268-3

R.T.: 7.936 min
 Delta R.T.: 0.000 min
 Response: 169377934
 Conc: 745.14 ng/ml



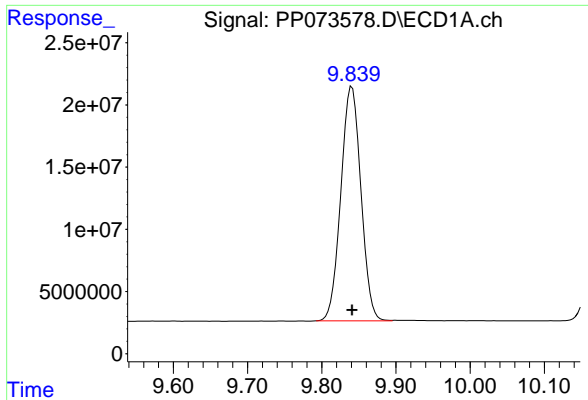
#44 AR-1268-4

R.T.: 9.430 min
 Delta R.T.: 0.000 min
 Response: 52353473
 Conc: 752.66 ng/ml



#44 AR-1268-4

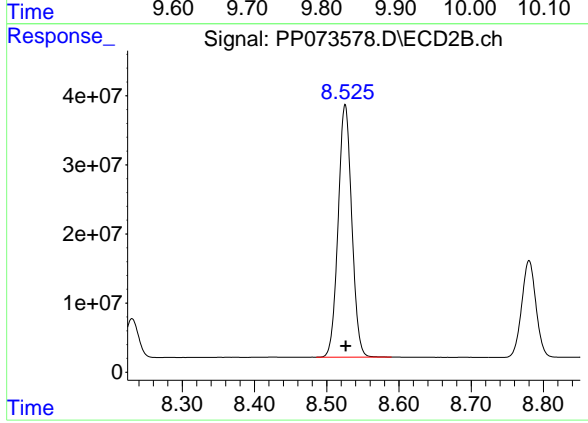
R.T.: 8.230 min
 Delta R.T.: 0.000 min
 Response: 71323535
 Conc: 749.05 ng/ml



#45 AR-1268-5

R.T.: 9.841 min
Delta R.T.: 0.000 min
Response: 354587033
Conc: 730.87 ng/ml

Instrument :
ECD_P
ClientSampleId :
AR1268ICC750



#45 AR-1268-5

R.T.: 8.526 min
Delta R.T.: 0.000 min
Response: 478238089
Conc: 768.34 ng/ml