

Data Path : Z:\pestpcbsrv\HPCHEM1\ECD_P\Data\PP070825\
 Data File : PP073585.D
 Signal(s) : Signal #1: ECD1A.ch Signal #2: ECD2B.ch
 Acq On : 08 Jul 2025 06:19
 Operator : YP\AJ
 Sample : AR1254ICV500
 Misc :
 ALS Vial : 34 Sample Multiplier: 1

Instrument :
 ECD_P
 ClientSampleId :
 ICVPP070825AR1254

Integration File signal 1: autoint1.e
 Integration File signal 2: autoint2.e
 Quant Time: Jul 08 06:42:24 2025
 Quant Method : Z:\pestpcbsrv\HPCHEM1\ECD_P\methods\PP070825.M
 Quant Title : GC EXTRACTABLES
 QLast Update : Tue Jul 08 06:01:49 2025
 Response via : Initial Calibration
 Integrator: ChemStation

Volume Inj. : 2 µl
 Signal #1 Phase : ZB-MR2 Signal #2 Phase: ZB-MR2
 Signal #1 Info : 30Mx0.32mmx 0.50µ Signal #2 Info : 30M x 0.32mm x 0.25µm

Compound	RT#1	RT#2	Resp#1	Resp#2	ng/ml	ng/ml
System Monitoring Compounds						
1) SA Tetrachlo...	4.488	3.779	72137939	98177371	52.674	53.291
2) SA Decachlor...	10.176	8.780	58669520	75798661	53.773	57.287
Target Compounds						
3) L1 AR-1016-1	5.638	4.857	876376	1287214	18.445	18.881
4) L1 AR-1016-2	5.662	4.875	1161128	1161379	16.305	11.399 #
5) L1 AR-1016-3	5.724	5.053	615527	803335	14.097	14.847
6) L1 AR-1016-4	5.819	5.092	459939	24722192	12.795	563.394 #
7) L1 AR-1016-5	6.112	5.306	5866395	15030427	187.243	275.371 #
8) L2 AR-1221-1	4.716	3.993	57639	72647	3.226	2.686
9) L2 AR-1221-2	4.789	4.079	1233237	1945610	91.321	95.559
10) L2 AR-1221-3	4.850	4.147	410715	505488	9.872	8.226
11) L3 AR-1232-1	4.850	4.147	410715	505488	12.579	10.844
12) L3 AR-1232-2	5.373	4.875	396545	1161379	24.396	24.368
13) L3 AR-1232-3	5.662	5.053	1161128	803335	35.193	32.096
14) L3 AR-1232-4	5.819	5.134	459939	7859318	27.968	362.912 #
15) L3 AR-1232-5	5.908	5.306	14793621	15030427	1399.538	666.141 #
16) L4 AR-1242-1	5.638	4.857	876376	1287214	22.949	22.284
17) L4 AR-1242-2	5.662	4.875	1161128	1161379	19.390	13.433 #
18) L4 AR-1242-3	5.724	5.053	615527	803335	16.808	17.484
19) L4 AR-1242-4	5.819	5.134	459939	7859318	14.312	177.558 #
20) L4 AR-1242-5	6.552	5.657	9070416	57179282	277.070	1035.060 #
21) L5 AR-1248-1	5.638	4.857	876376	1287214	28.389	28.672
22) L5 AR-1248-2	5.908	5.092	14793621	24722192	370.551	401.748
23) L5 AR-1248-3	6.112	5.134	5866395	7859318	132.097	122.678
24) L5 AR-1248-4	6.509	5.306	13086618	15030427	237.591	199.402
25) L5 AR-1248-5	6.552	5.697	9070416	7521302	168.624	100.834 #
26) L6 AR-1254-1	6.486	5.657	27751618	57179282	517.855	492.797
27) L6 AR-1254-2	6.702	5.805	42039125	49615142	504.739	493.077
28) L6 AR-1254-3	7.065	6.207	45059626	78048221	510.118	505.342
29) L6 AR-1254-4	7.348	6.435	39772060	48017763	505.575	507.806
30) L6 AR-1254-5	7.764	6.851	38107518	68206603	517.204	511.122
31) L7 AR-1260-1	7.229	6.337	18004925	38345350	305.369	393.043 #
32) L7 AR-1260-2	7.483	6.525	23074595	31179886	240.762	253.830
33) L7 AR-1260-3	7.825	6.675	4690553	32586240	64.192	297.690 #
34) L7 AR-1260-4	8.050	7.146	13893746	3993620	212.768	44.667 #
35) L7 AR-1260-5	8.381	7.389	6281850	8895035	41.642	39.580
36) L8 AR-1262-1	8.050	6.921	13893746	5509922	159.648	37.307 #
37) L8 AR-1262-2	8.381	7.146	6281850	3993620	31.722	31.242
38) L8 AR-1262-3	8.706	7.667	4511417	628511	35.883	5.512 #
39) L8 AR-1262-4	8.790	7.730	158581	7842761	1.700	42.612 #
40) L8 AR-1262-5	9.429	8.228	324171	279941	5.114	3.315 #
41) L9 AR-1268-1	8.706	7.667	4511417	628511	20.210	2.045 #

Data Path : Z:\pestpcbsrv\HPCHEM1\ECD_P\Data\PP070825\
 Data File : PP073585.D
 Signal(s) : Signal #1: ECD1A.ch Signal #2: ECD2B.ch
 Acq On : 08 Jul 2025 06:19
 Operator : YP\AJ
 Sample : AR1254ICV500
 Misc :
 ALS Vial : 34 Sample Multiplier: 1

Instrument :
 ECD_P
 ClientSampleId :
 ICVPP070825AR1254

Integration File signal 1: autoint1.e
 Integration File signal 2: autoint2.e
 Quant Time: Jul 08 06:42:24 2025
 Quant Method : Z:\pestpcbsrv\HPCHEM1\ECD_P\methods\PP070825.M
 Quant Title : GC EXTRACTABLES
 QLast Update : Tue Jul 08 06:01:49 2025
 Response via : Initial Calibration
 Integrator: ChemStation

Volume Inj. : 2 µl
 Signal #1 Phase : ZB-MR1 Signal #2 Phase: ZB-MR2
 Signal #1 Info : 30Mx0.32mmx 0.50µ Signal #2 Info : 30M x 0.32mm x 0.25µm

	Compound	RT#1	RT#2	Resp#1	Resp#2	ng/ml	ng/ml
42)	L9 AR-1268-2	8.790	7.730	158581	7842761	0.832	29.519 #
43)	L9 AR-1268-3	9.008	7.934	576947	316374	3.484	1.402 #
44)	L9 AR-1268-4	9.429	8.228	324171	279941	4.661	3.011 #
45)	L9 AR-1268-5	9.838	8.526	306024	589001	0.664	0.955 #

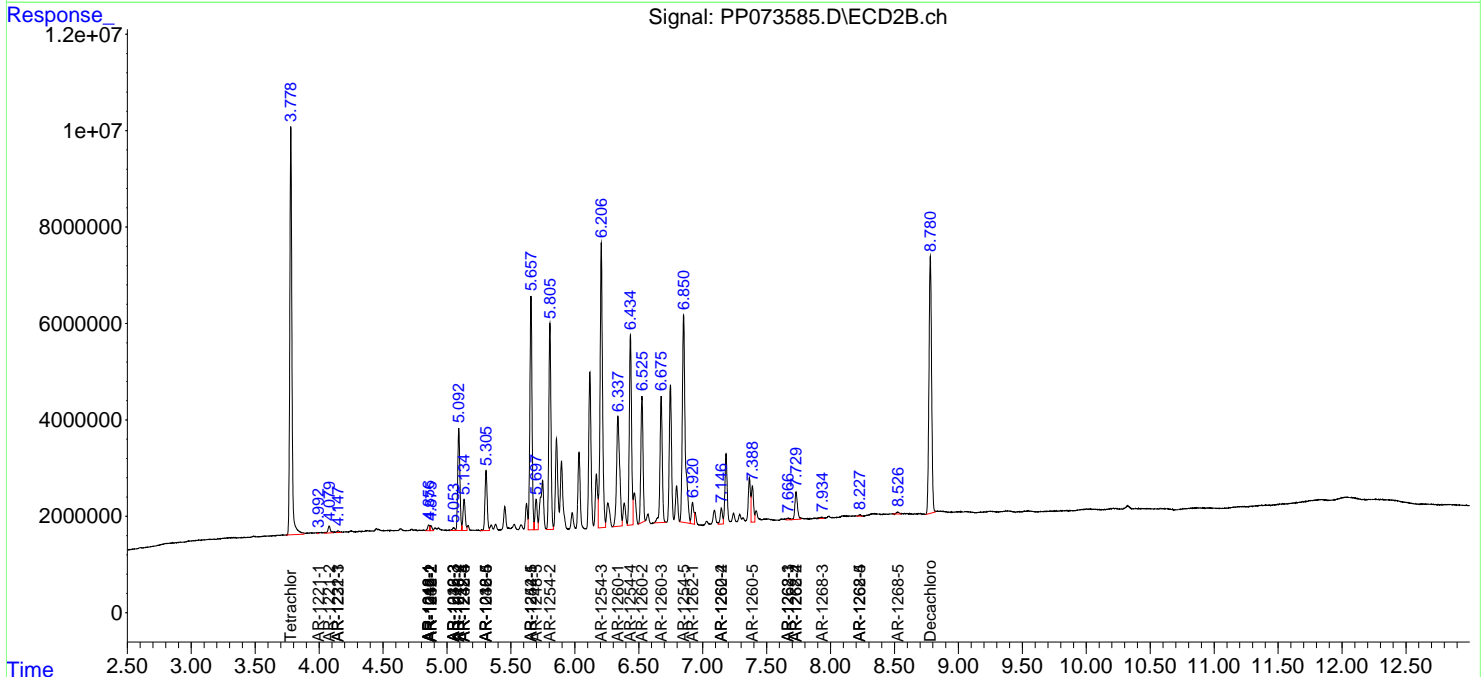
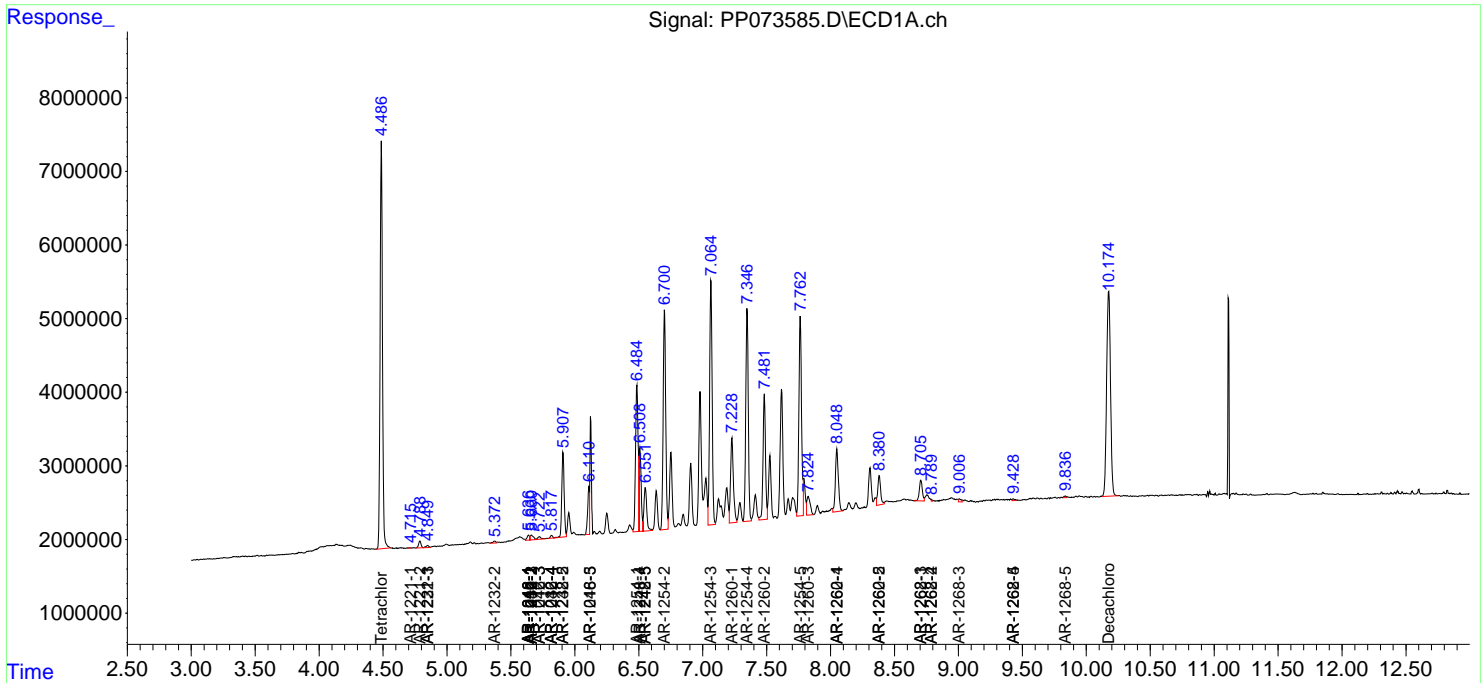
(f)=RT Delta > 1/2 Window (#)=Amounts differ by > 25% (m)=manual int.

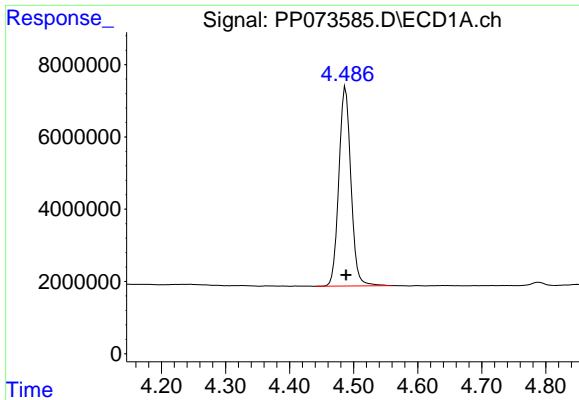
Data Path : Z:\pestpcbsrv\HPCHEM1\ECD_P\Data\PP070825\
 Data File : PP073585.D
 Signal(s) : Signal #1: ECD1A.ch Signal #2: ECD2B.ch
 Acq On : 08 Jul 2025 06:19
 Operator : YP\AJ
 Sample : AR1254ICV500
 Misc :
 ALS Vial : 34 Sample Multiplier: 1

Instrument :
 ECD_P
 ClientSampleId :
 ICVPP070825AR1254

Integration File signal 1: autoint1.e
 Integration File signal 2: autoint2.e
 Quant Time: Jul 08 06:42:24 2025
 Quant Method : Z:\pestpcbsrv\HPCHEM1\ECD_P\methods\PP070825.M
 Quant Title : GC EXTRACTABLES
 QLast Update : Tue Jul 08 06:01:49 2025
 Response via : Initial Calibration
 Integrator: ChemStation

Volume Inj. : 2 µl
 Signal #1 Phase : ZB-MR1 Signal #2 Phase: ZB-MR2
 Signal #1 Info : 30Mx0.32mmx 0.50µ Signal #2 Info : 30M x 0.32mm x 0.25µm

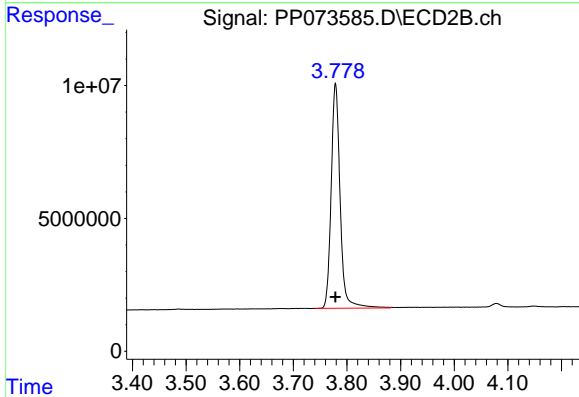




#1 Tetrachloro-m-xylene

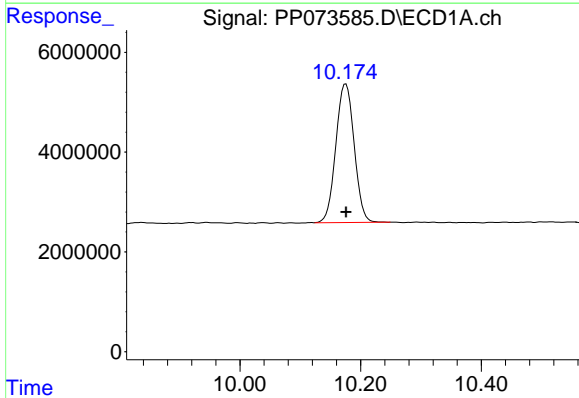
R.T.: 4.488 min
Delta R.T.: 0.000 min
Response: 72137939
Conc: 52.67 ng/ml

Instrument :
ECD_P
ClientSampleId :
ICVPP070825AR1254



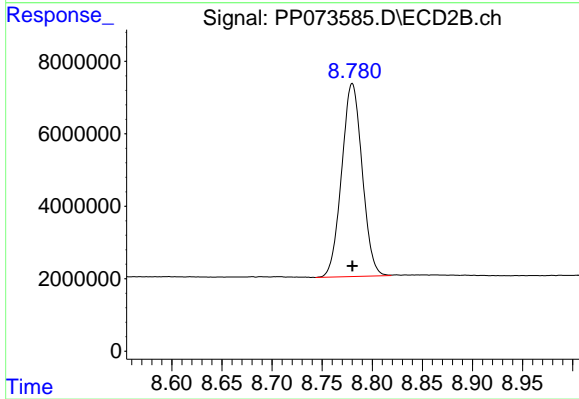
#1 Tetrachloro-m-xylene

R.T.: 3.779 min
Delta R.T.: 0.000 min
Response: 98177371
Conc: 53.29 ng/ml



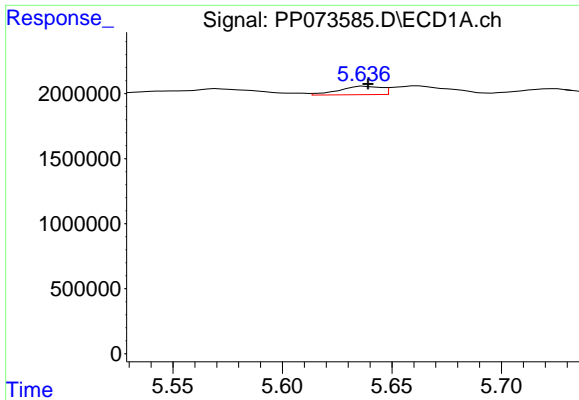
#2 Decachlorobiphenyl

R.T.: 10.176 min
Delta R.T.: 0.000 min
Response: 58669520
Conc: 53.77 ng/ml



#2 Decachlorobiphenyl

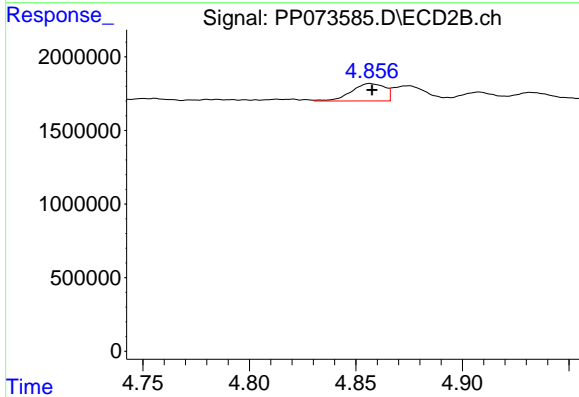
R.T.: 8.780 min
Delta R.T.: 0.000 min
Response: 75798661
Conc: 57.29 ng/ml



#3 AR-1016-1

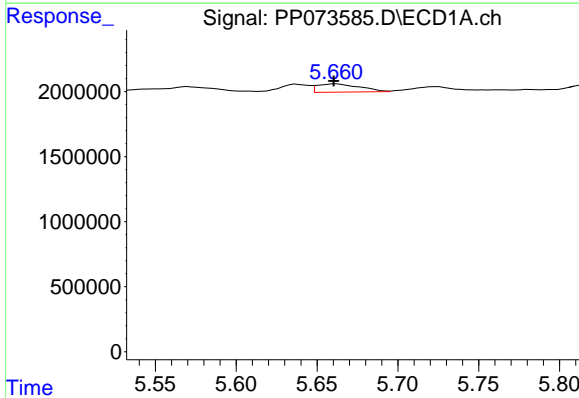
R.T.: 5.638 min
 Delta R.T.: -0.001 min
 Response: 876376
 Conc: 18.44 ng/ml

Instrument :
 ECD_P
 ClientSampleId :
 ICVPP070825AR1254



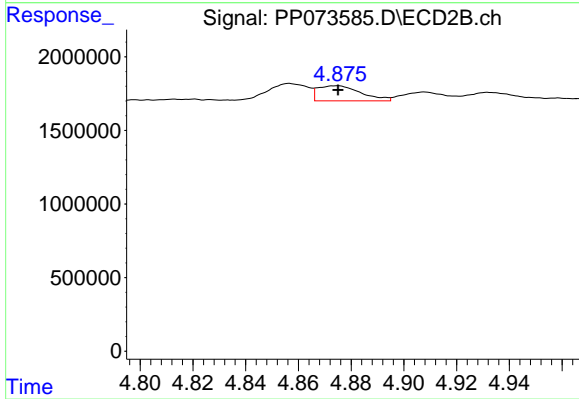
#3 AR-1016-1

R.T.: 4.857 min
 Delta R.T.: -0.001 min
 Response: 1287214
 Conc: 18.88 ng/ml



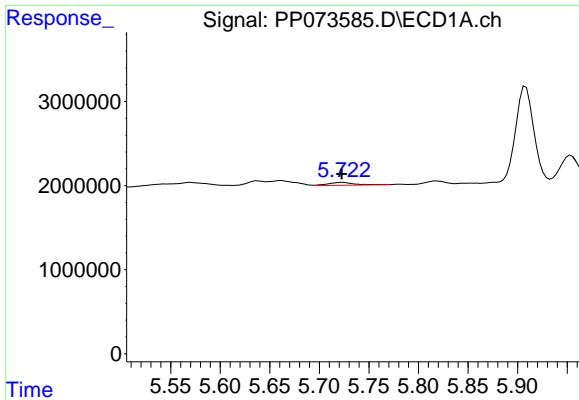
#4 AR-1016-2

R.T.: 5.662 min
 Delta R.T.: 0.001 min
 Response: 1161128
 Conc: 16.30 ng/ml



#4 AR-1016-2

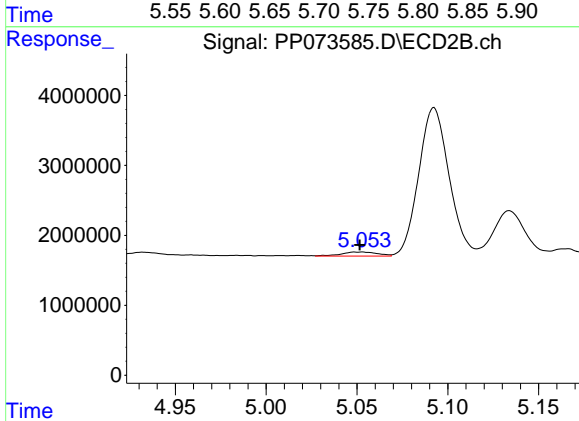
R.T.: 4.875 min
 Delta R.T.: 0.000 min
 Response: 1161379
 Conc: 11.40 ng/ml



#5 AR-1016-3

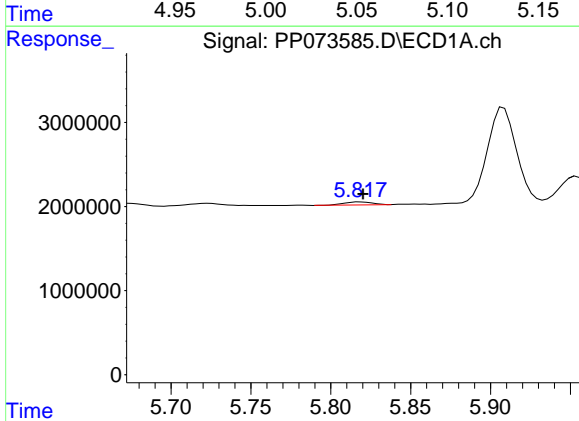
R.T.: 5.724 min
 Delta R.T.: 0.002 min
 Response: 615527
 Conc: 14.10 ng/ml

Instrument :
 ECD_P
 ClientSampleId :
 ICVPP070825AR1254



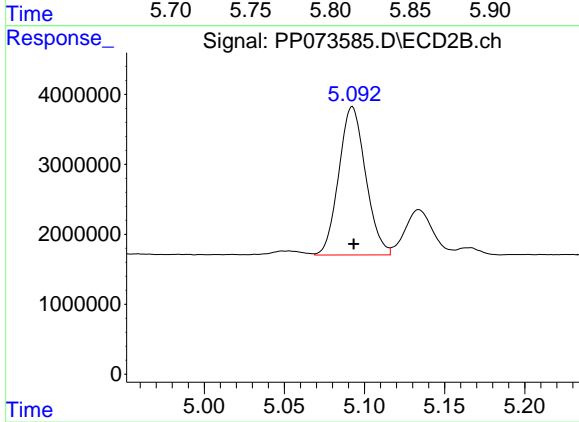
#5 AR-1016-3

R.T.: 5.053 min
 Delta R.T.: 0.002 min
 Response: 803335
 Conc: 14.85 ng/ml



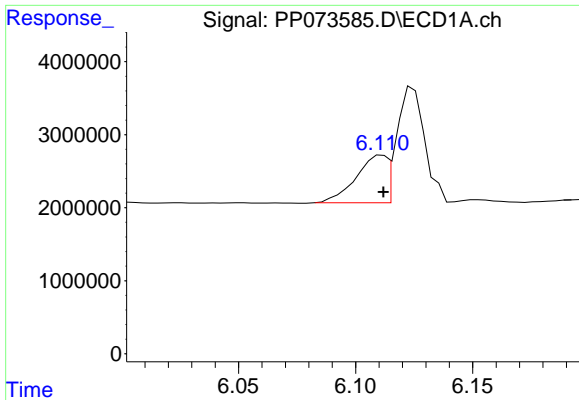
#6 AR-1016-4

R.T.: 5.819 min
 Delta R.T.: -0.002 min
 Response: 459939
 Conc: 12.80 ng/ml



#6 AR-1016-4

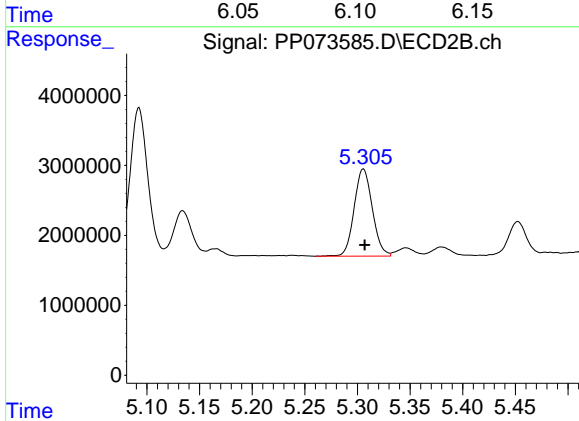
R.T.: 5.092 min
 Delta R.T.: 0.000 min
 Response: 24722192
 Conc: 563.39 ng/ml



#7 AR-1016-5

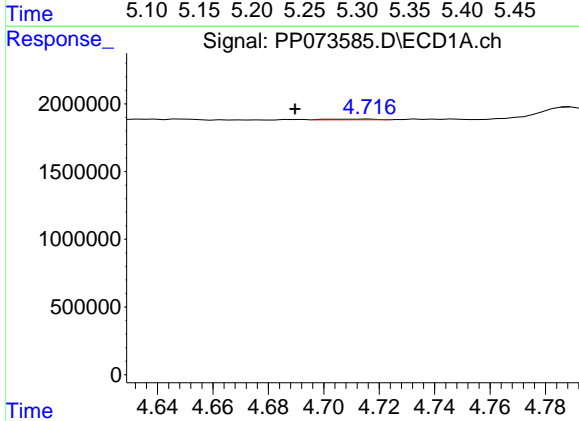
R.T.: 6.112 min
 Delta R.T.: 0.000 min
 Response: 5866395
 Conc: 187.24 ng/ml

Instrument :
 ECD_P
 ClientSampleId :
 ICVPP070825AR1254



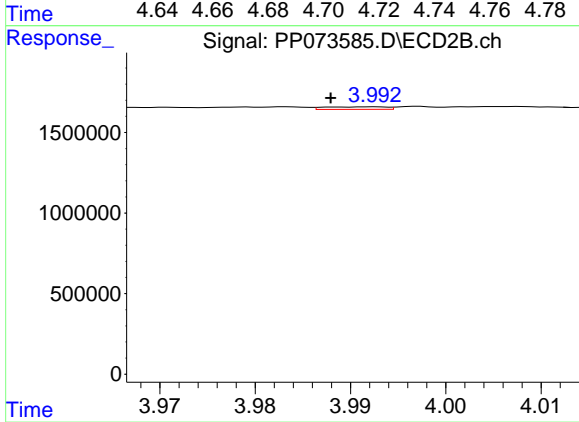
#7 AR-1016-5

R.T.: 5.306 min
 Delta R.T.: -0.001 min
 Response: 15030427
 Conc: 275.37 ng/ml



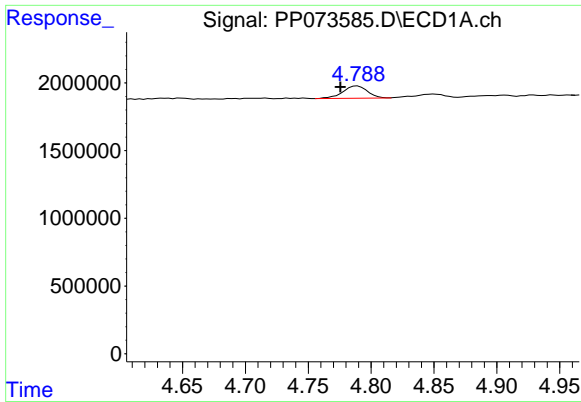
#8 AR-1221-1

R.T.: 4.716 min
 Delta R.T.: 0.027 min
 Response: 57639
 Conc: 3.23 ng/ml



#8 AR-1221-1

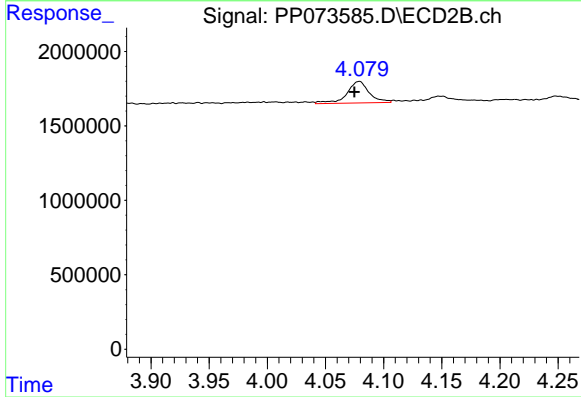
R.T.: 3.993 min
 Delta R.T.: 0.005 min
 Response: 72647
 Conc: 2.69 ng/ml



#9 AR-1221-2

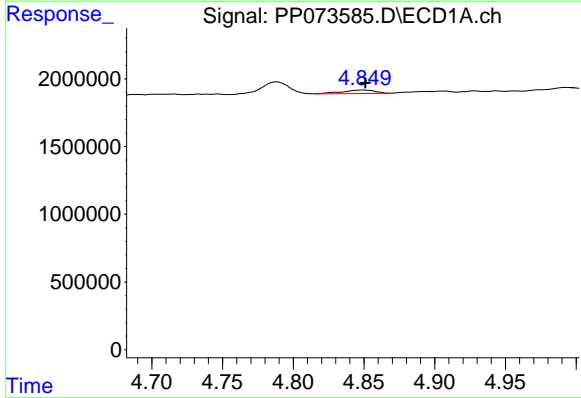
R.T.: 4.789 min
 Delta R.T.: 0.013 min
 Response: 1233237
 Conc: 91.32 ng/ml

Instrument :
 ECD_P
 ClientSampleId :
 ICVPP070825AR1254



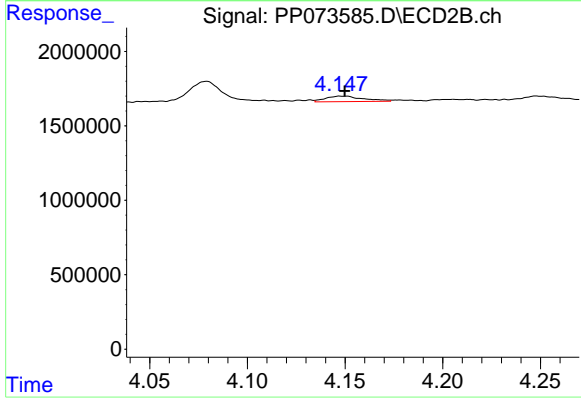
#9 AR-1221-2

R.T.: 4.079 min
 Delta R.T.: 0.005 min
 Response: 1945610
 Conc: 95.56 ng/ml



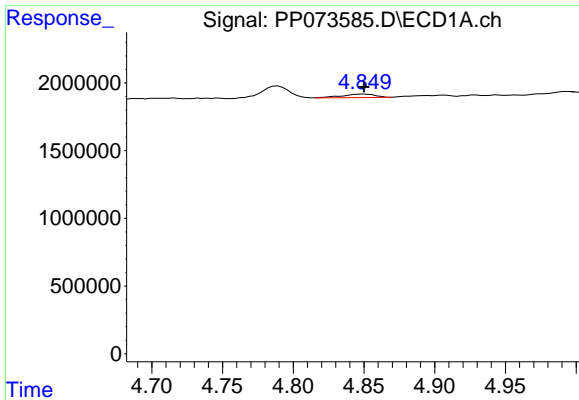
#10 AR-1221-3

R.T.: 4.850 min
 Delta R.T.: -0.001 min
 Response: 410715
 Conc: 9.87 ng/ml



#10 AR-1221-3

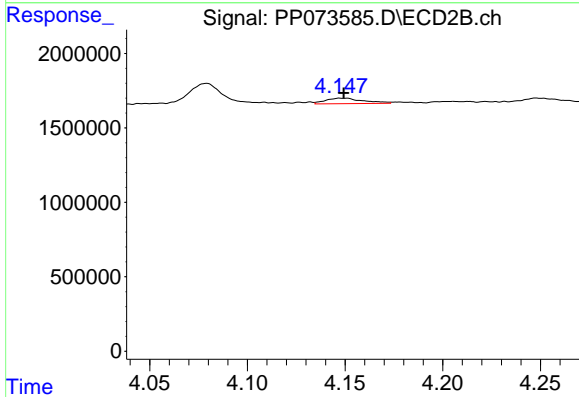
R.T.: 4.147 min
 Delta R.T.: -0.003 min
 Response: 505488
 Conc: 8.23 ng/ml



#11 AR-1232-1

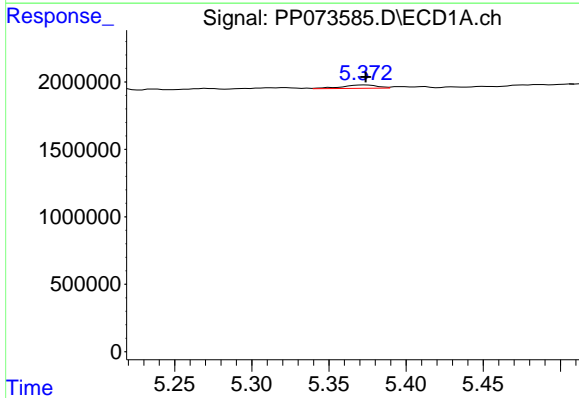
R.T.: 4.850 min
 Delta R.T.: 0.000 min
 Response: 410715
 Conc: 12.58 ng/ml

Instrument :
 ECD_P
 ClientSampleId :
 ICVPP070825AR1254



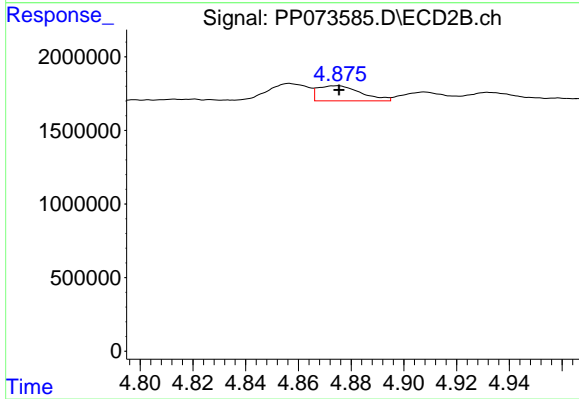
#11 AR-1232-1

R.T.: 4.147 min
 Delta R.T.: -0.002 min
 Response: 505488
 Conc: 10.84 ng/ml



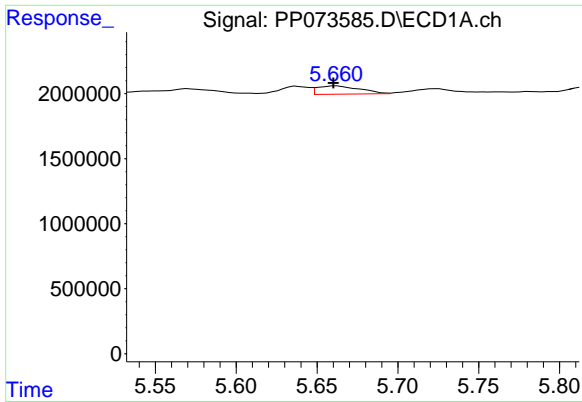
#12 AR-1232-2

R.T.: 5.373 min
 Delta R.T.: 0.000 min
 Response: 396545
 Conc: 24.40 ng/ml



#12 AR-1232-2

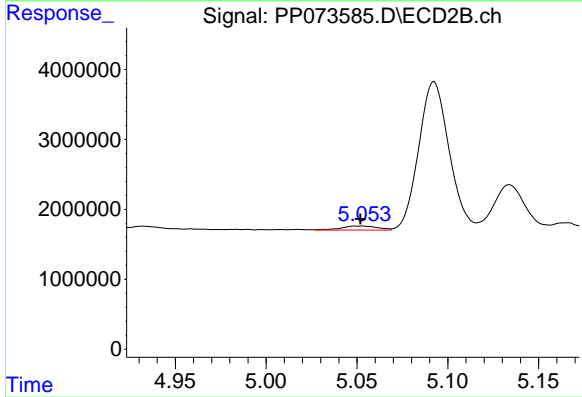
R.T.: 4.875 min
 Delta R.T.: 0.000 min
 Response: 1161379
 Conc: 24.37 ng/ml



#13 AR-1232-3

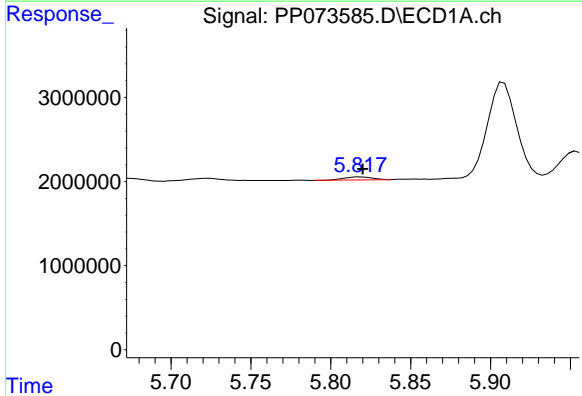
R.T.: 5.662 min
 Delta R.T.: 0.001 min
 Response: 1161128
 Conc: 35.19 ng/ml

Instrument :
 ECD_P
 ClientSampleId :
 ICVPP070825AR1254



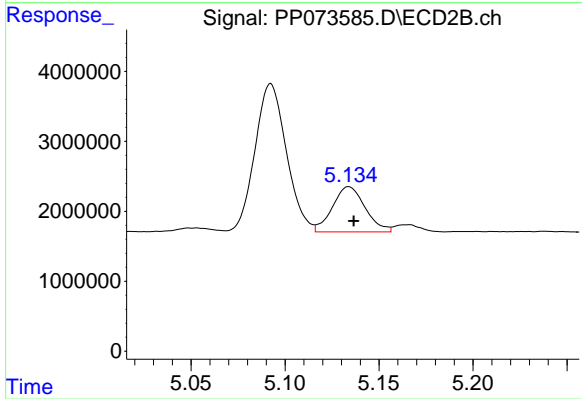
#13 AR-1232-3

R.T.: 5.053 min
 Delta R.T.: 0.001 min
 Response: 803335
 Conc: 32.10 ng/ml



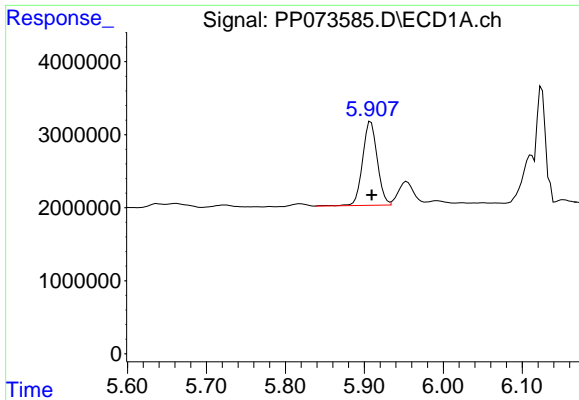
#14 AR-1232-4

R.T.: 5.819 min
 Delta R.T.: -0.001 min
 Response: 459939
 Conc: 27.97 ng/ml



#14 AR-1232-4

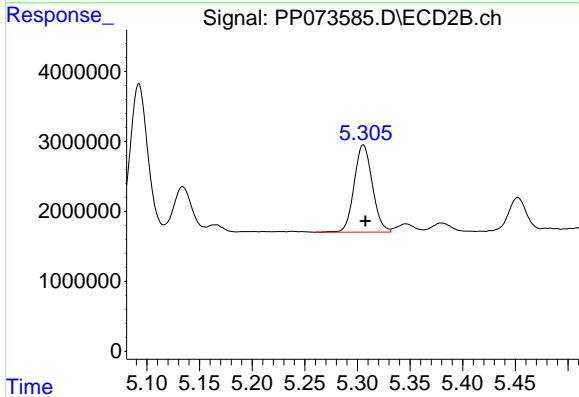
R.T.: 5.134 min
 Delta R.T.: -0.003 min
 Response: 7859318
 Conc: 362.91 ng/ml



#15 AR-1232-5

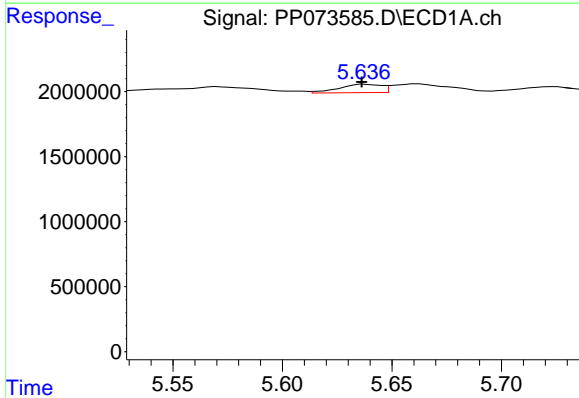
R.T.: 5.908 min
 Delta R.T.: -0.001 min
 Response: 14793621
 Conc: 1399.54 ng/ml

Instrument :
 ECD_P
 ClientSampleId :
 ICVPP070825AR1254



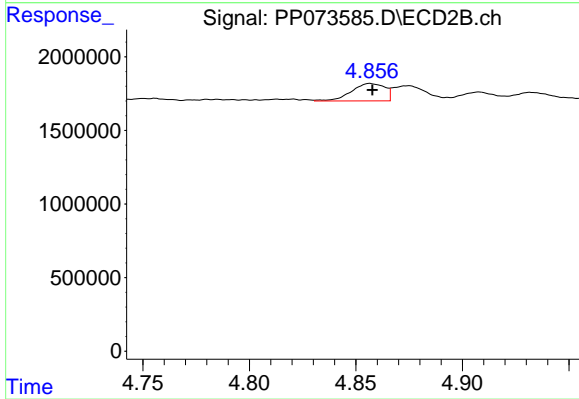
#15 AR-1232-5

R.T.: 5.306 min
 Delta R.T.: -0.002 min
 Response: 15030427
 Conc: 666.14 ng/ml



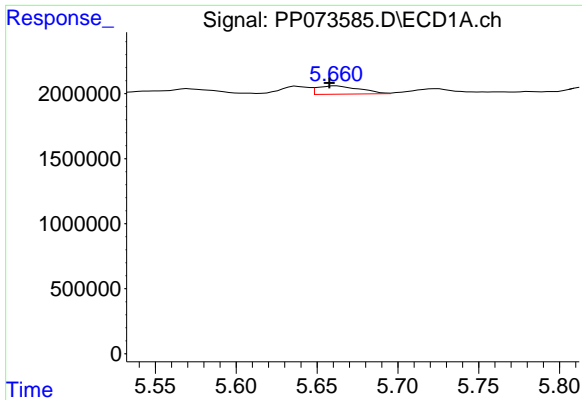
#16 AR-1242-1

R.T.: 5.638 min
 Delta R.T.: 0.001 min
 Response: 876376
 Conc: 22.95 ng/ml



#16 AR-1242-1

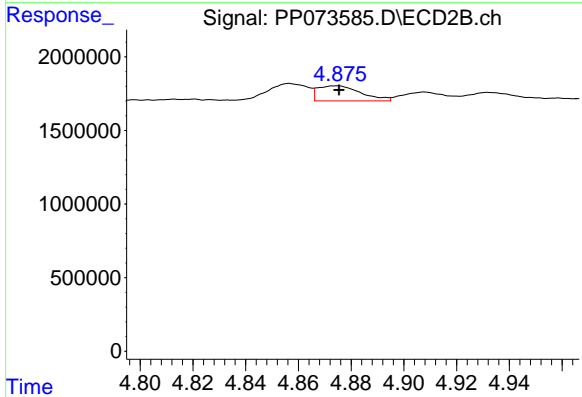
R.T.: 4.857 min
 Delta R.T.: -0.001 min
 Response: 1287214
 Conc: 22.28 ng/ml



#17 AR-1242-2

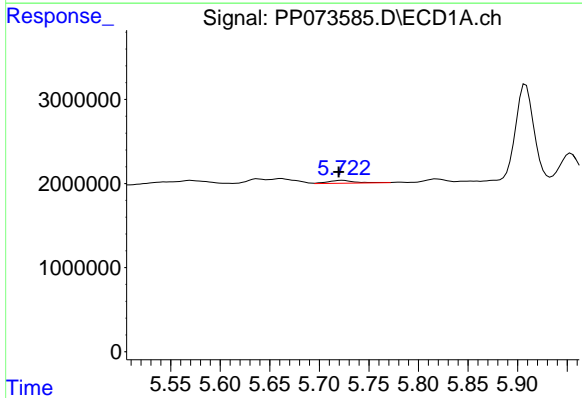
R.T.: 5.662 min
 Delta R.T.: 0.004 min
 Response: 1161128
 Conc: 19.39 ng/ml

Instrument :
 ECD_P
 ClientSampleId :
 ICVPP070825AR1254



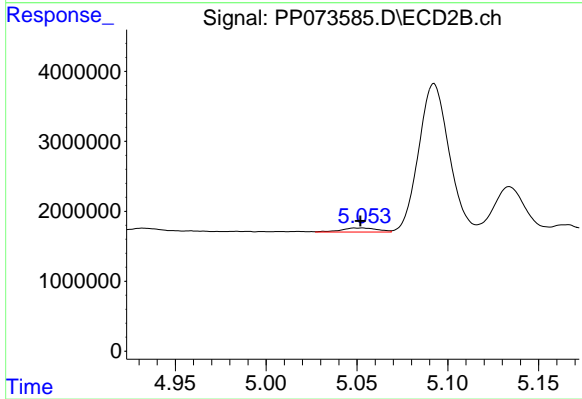
#17 AR-1242-2

R.T.: 4.875 min
 Delta R.T.: 0.000 min
 Response: 1161379
 Conc: 13.43 ng/ml



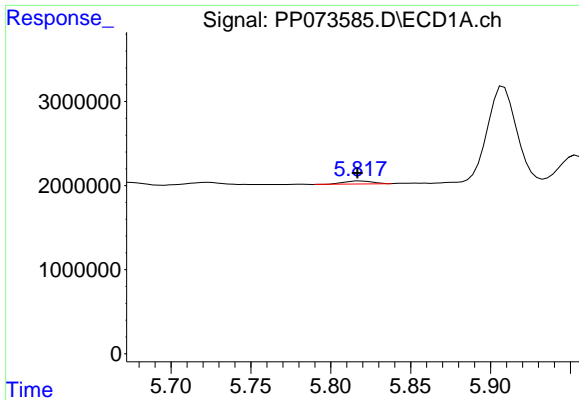
#18 AR-1242-3

R.T.: 5.724 min
 Delta R.T.: 0.004 min
 Response: 615527
 Conc: 16.81 ng/ml



#18 AR-1242-3

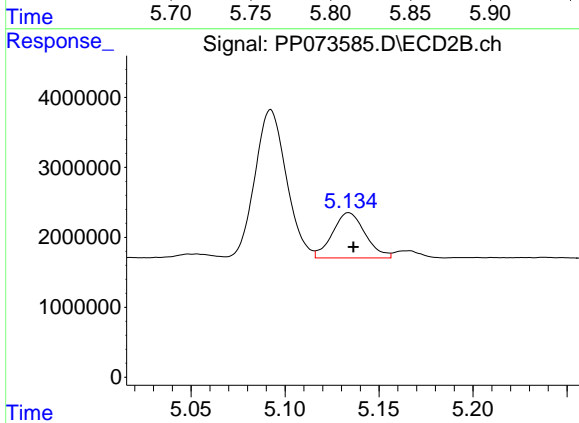
R.T.: 5.053 min
 Delta R.T.: 0.001 min
 Response: 803335
 Conc: 17.48 ng/ml



#19 AR-1242-4

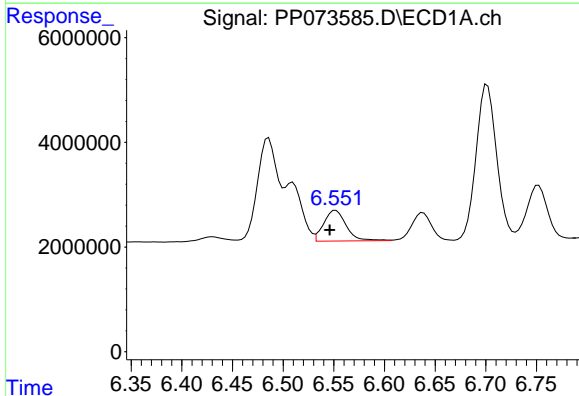
R.T.: 5.819 min
 Delta R.T.: 0.002 min
 Response: 459939
 Conc: 14.31 ng/ml

Instrument :
 ECD_P
 ClientSampleId :
 ICVPP070825AR1254



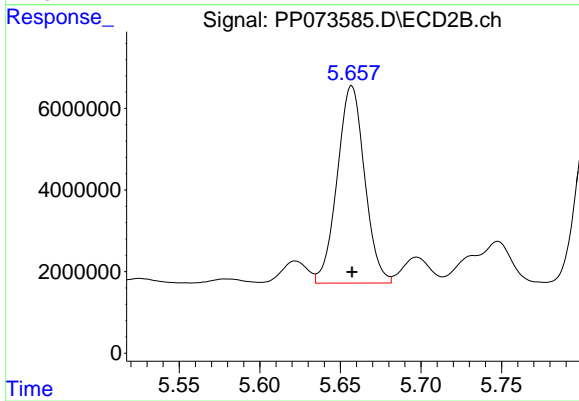
#19 AR-1242-4

R.T.: 5.134 min
 Delta R.T.: -0.002 min
 Response: 7859318
 Conc: 177.56 ng/ml



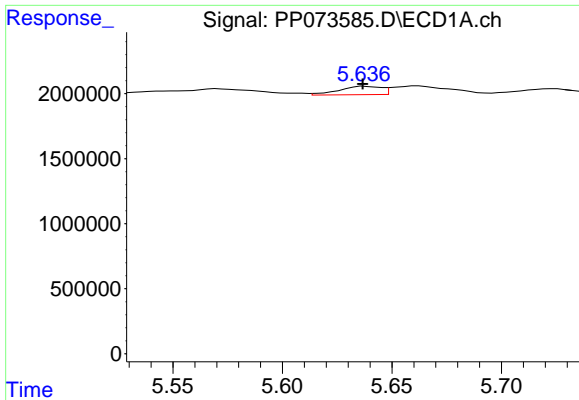
#20 AR-1242-5

R.T.: 6.552 min
 Delta R.T.: 0.006 min
 Response: 9070416
 Conc: 277.07 ng/ml



#20 AR-1242-5

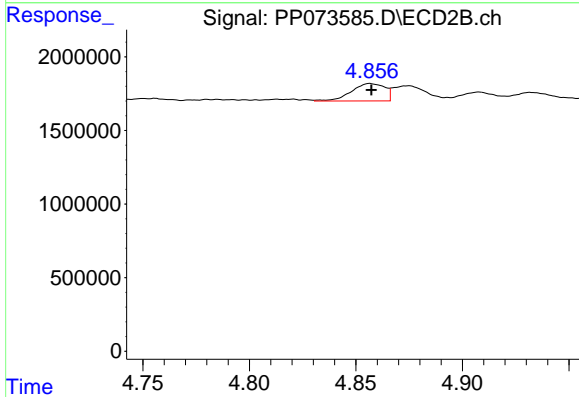
R.T.: 5.657 min
 Delta R.T.: 0.000 min
 Response: 57179282
 Conc: 1035.06 ng/ml



#21 AR-1248-1

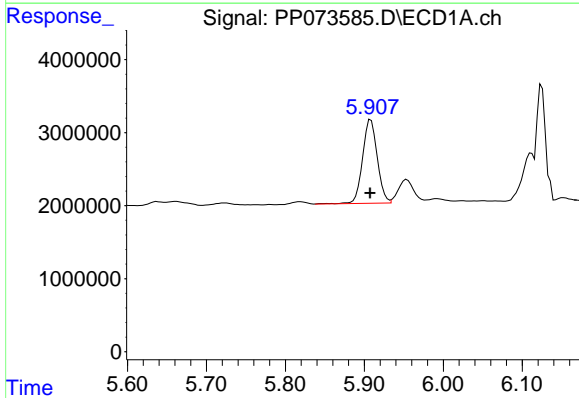
R.T.: 5.638 min
 Delta R.T.: 0.000 min
 Response: 876376
 Conc: 28.39 ng/ml

Instrument :
 ECD_P
 ClientSampleId :
 ICVPP070825AR1254



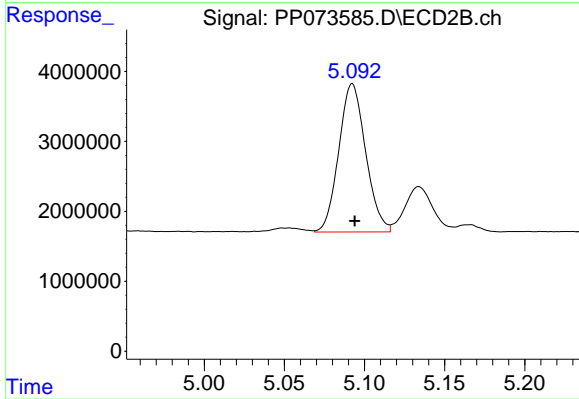
#21 AR-1248-1

R.T.: 4.857 min
 Delta R.T.: 0.000 min
 Response: 1287214
 Conc: 28.67 ng/ml



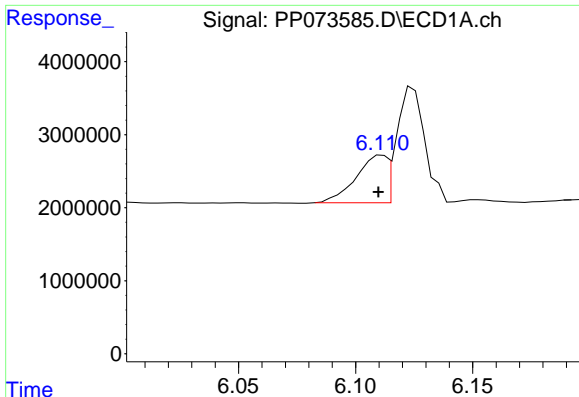
#22 AR-1248-2

R.T.: 5.908 min
 Delta R.T.: 0.000 min
 Response: 14793621
 Conc: 370.55 ng/ml



#22 AR-1248-2

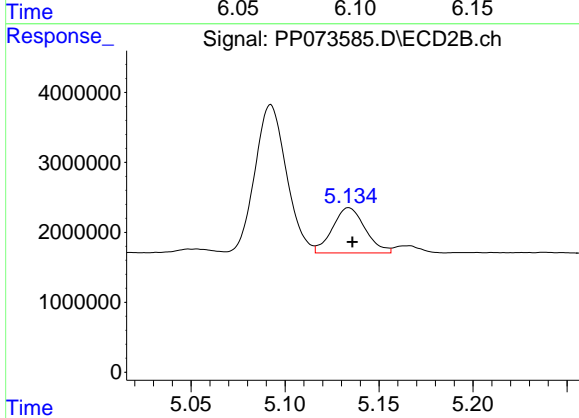
R.T.: 5.092 min
 Delta R.T.: -0.001 min
 Response: 24722192
 Conc: 401.75 ng/ml



#23 AR-1248-3

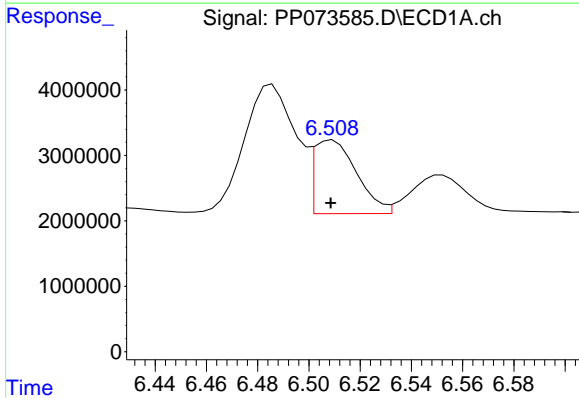
R.T.: 6.112 min
 Delta R.T.: 0.002 min
 Response: 5866395
 Conc: 132.10 ng/ml

Instrument :
 ECD_P
 ClientSampleId :
 ICVPP070825AR1254



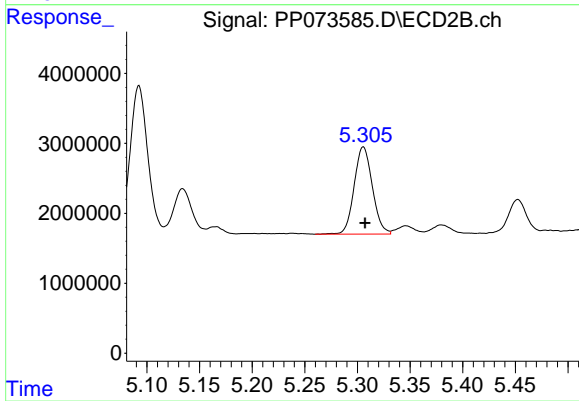
#23 AR-1248-3

R.T.: 5.134 min
 Delta R.T.: -0.002 min
 Response: 7859318
 Conc: 122.68 ng/ml



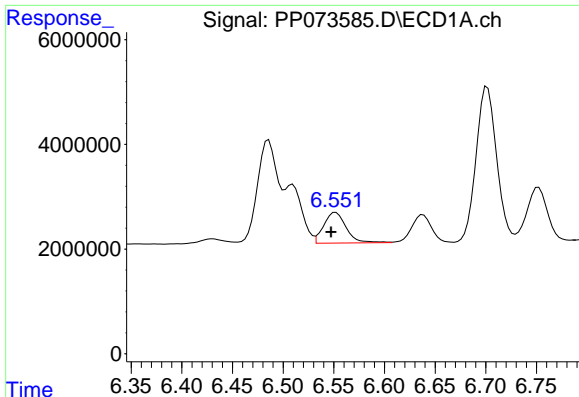
#24 AR-1248-4

R.T.: 6.509 min
 Delta R.T.: 0.000 min
 Response: 13086618
 Conc: 237.59 ng/ml



#24 AR-1248-4

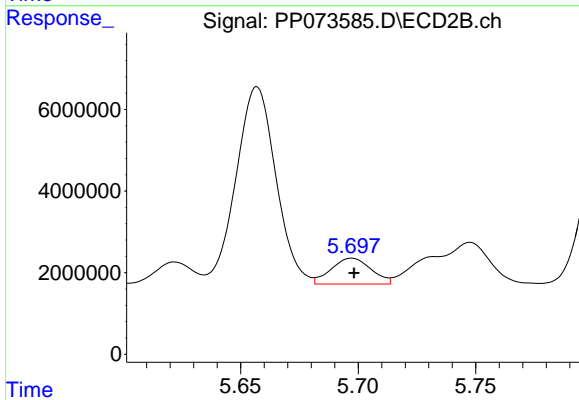
R.T.: 5.306 min
 Delta R.T.: -0.002 min
 Response: 15030427
 Conc: 199.40 ng/ml



#25 AR-1248-5

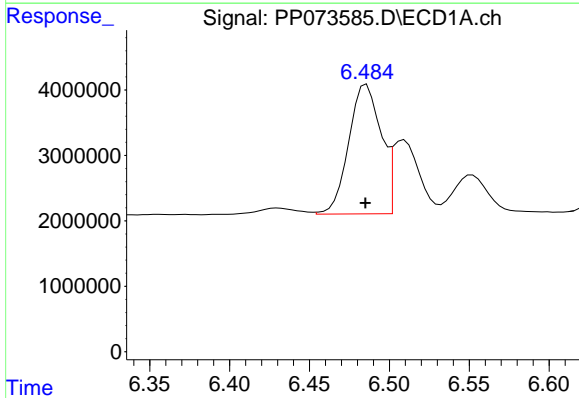
R.T.: 6.552 min
 Delta R.T.: 0.005 min
 Response: 9070416
 Conc: 168.62 ng/ml

Instrument :
 ECD_P
 ClientSampleId :
 ICVPP070825AR1254



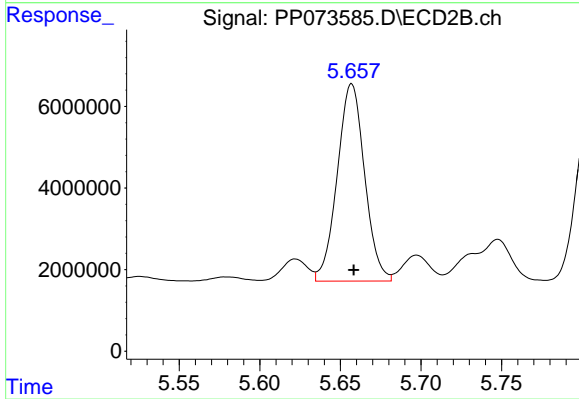
#25 AR-1248-5

R.T.: 5.697 min
 Delta R.T.: 0.000 min
 Response: 7521302
 Conc: 100.83 ng/ml



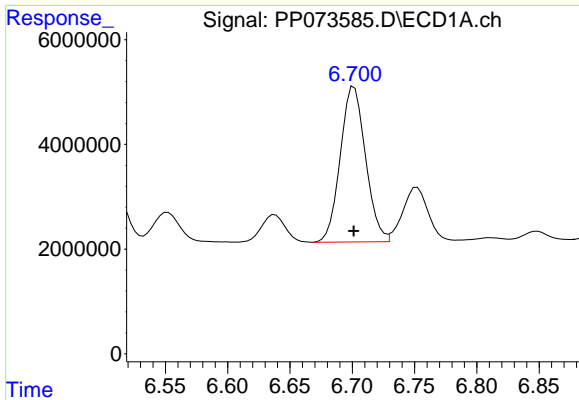
#26 AR-1254-1

R.T.: 6.486 min
 Delta R.T.: 0.000 min
 Response: 27751618
 Conc: 517.86 ng/ml



#26 AR-1254-1

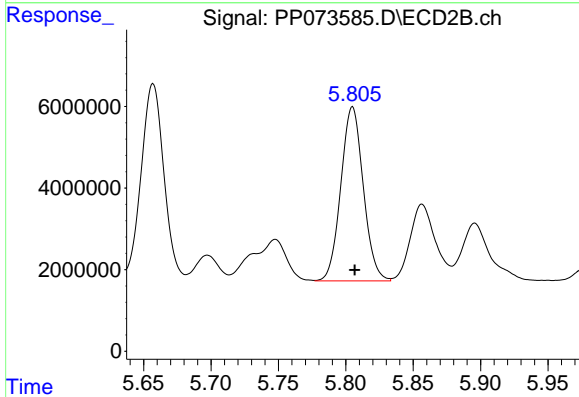
R.T.: 5.657 min
 Delta R.T.: -0.001 min
 Response: 57179282
 Conc: 492.80 ng/ml



#27 AR-1254-2

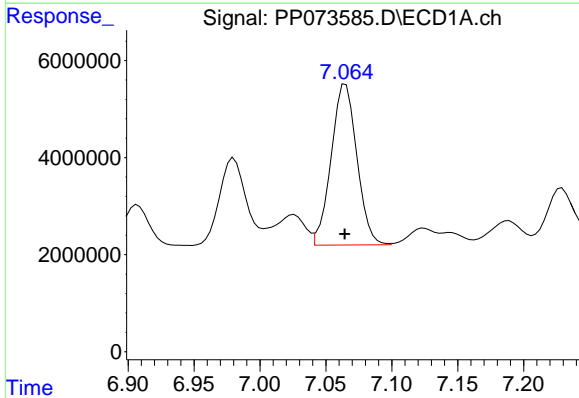
R.T.: 6.702 min
 Delta R.T.: 0.000 min
 Response: 42039125
 Conc: 504.74 ng/ml

Instrument :
 ECD_P
 ClientSampleId :
 ICVPP070825AR1254



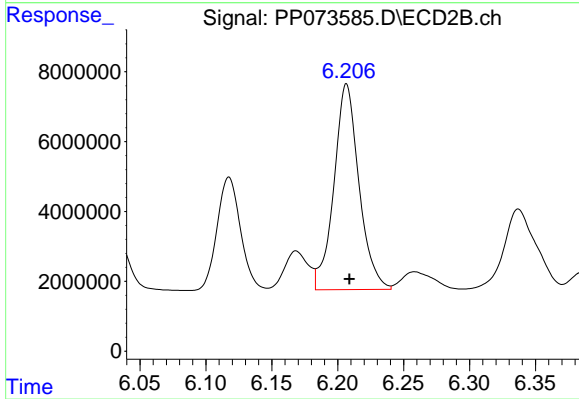
#27 AR-1254-2

R.T.: 5.805 min
 Delta R.T.: -0.002 min
 Response: 49615142
 Conc: 493.08 ng/ml



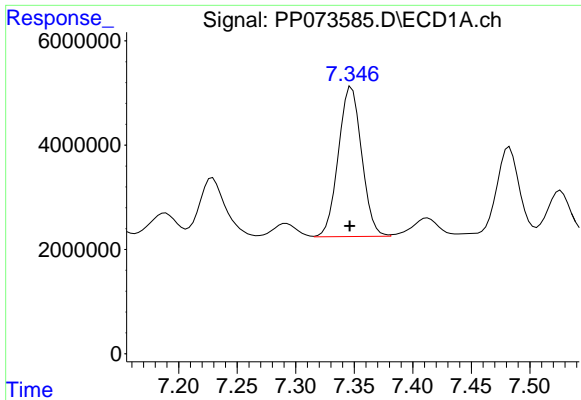
#28 AR-1254-3

R.T.: 7.065 min
 Delta R.T.: 0.000 min
 Response: 45059626
 Conc: 510.12 ng/ml



#28 AR-1254-3

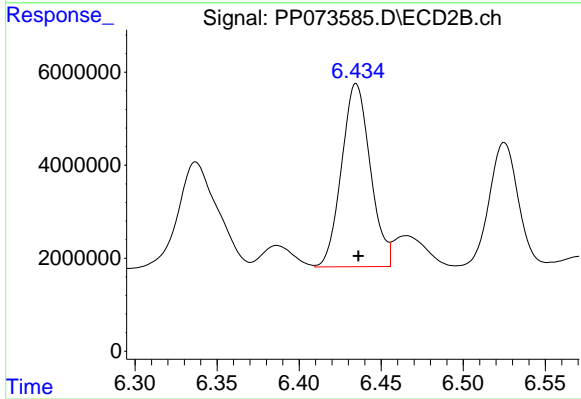
R.T.: 6.207 min
 Delta R.T.: -0.002 min
 Response: 78048221
 Conc: 505.34 ng/ml



#29 AR-1254-4

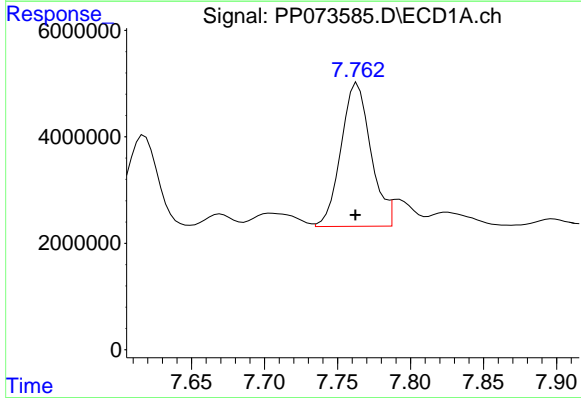
R.T.: 7.348 min
 Delta R.T.: 0.001 min
 Response: 39772060
 Conc: 505.57 ng/ml

Instrument :
 ECD_P
 ClientSampleId :
 ICVPP070825AR1254



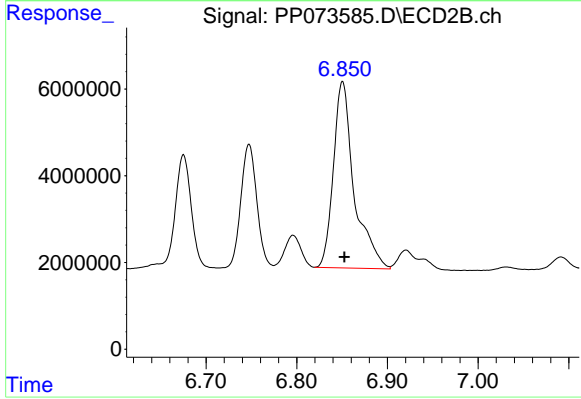
#29 AR-1254-4

R.T.: 6.435 min
 Delta R.T.: -0.001 min
 Response: 48017763
 Conc: 507.81 ng/ml



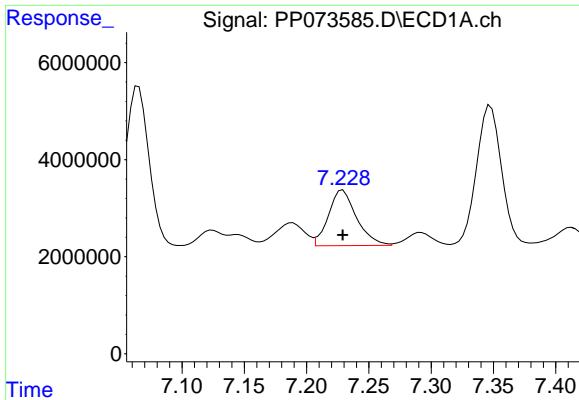
#30 AR-1254-5

R.T.: 7.764 min
 Delta R.T.: 0.001 min
 Response: 38107518
 Conc: 517.20 ng/ml



#30 AR-1254-5

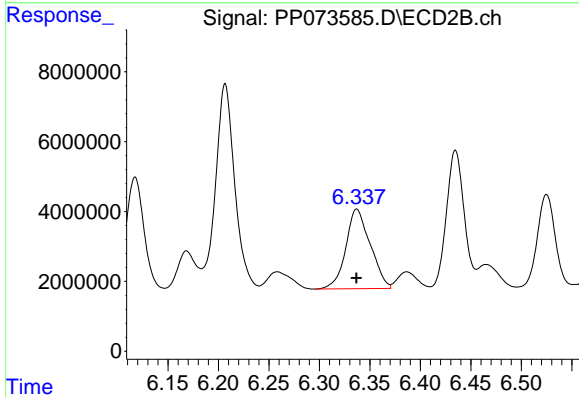
R.T.: 6.851 min
 Delta R.T.: -0.002 min
 Response: 68206603
 Conc: 511.12 ng/ml



#31 AR-1260-1

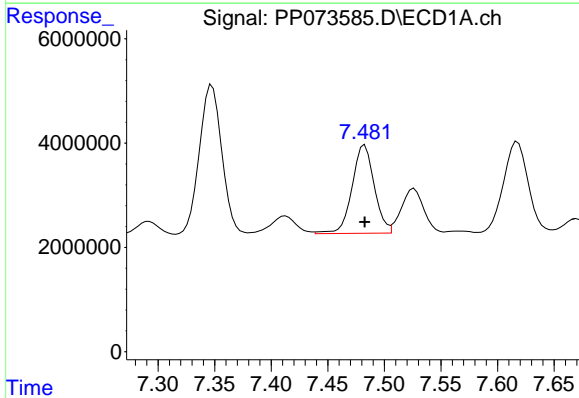
R.T.: 7.229 min
 Delta R.T.: 0.000 min
 Response: 18004925
 Conc: 305.37 ng/ml

Instrument :
 ECD_P
 ClientSampleId :
 ICVPP070825AR1254



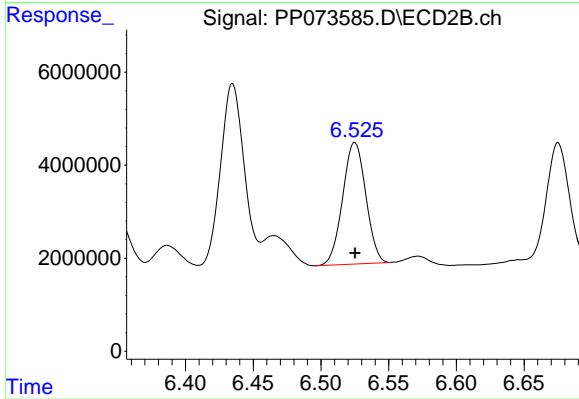
#31 AR-1260-1

R.T.: 6.337 min
 Delta R.T.: 0.000 min
 Response: 38345350
 Conc: 393.04 ng/ml



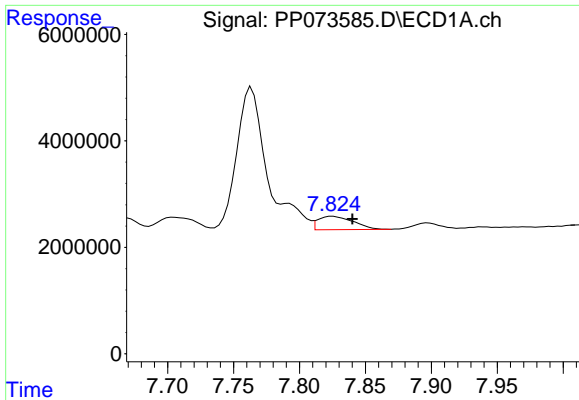
#32 AR-1260-2

R.T.: 7.483 min
 Delta R.T.: 0.000 min
 Response: 23074595
 Conc: 240.76 ng/ml



#32 AR-1260-2

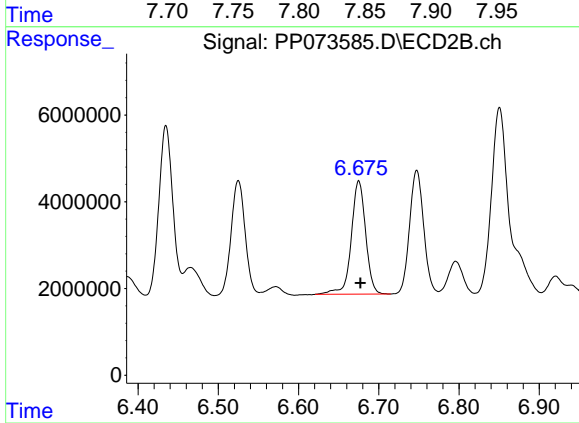
R.T.: 6.525 min
 Delta R.T.: 0.000 min
 Response: 31179886
 Conc: 253.83 ng/ml



#33 AR-1260-3

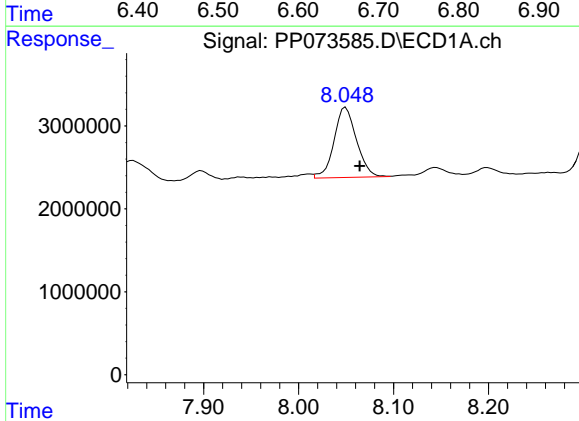
R.T.: 7.825 min
 Delta R.T.: -0.015 min
 Response: 4690553
 Conc: 64.19 ng/ml

Instrument :
 ECD_P
 ClientSampleId :
 ICVPP070825AR1254



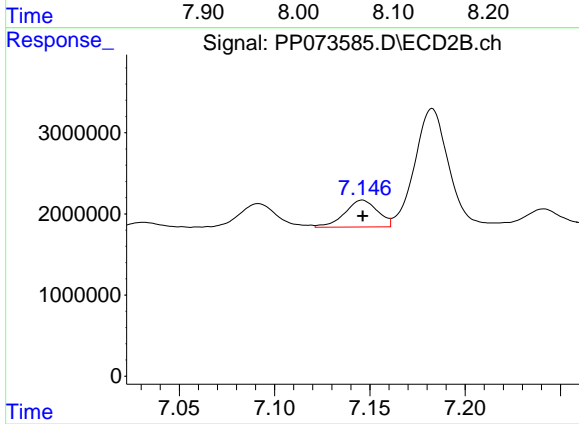
#33 AR-1260-3

R.T.: 6.675 min
 Delta R.T.: -0.002 min
 Response: 32586240
 Conc: 297.69 ng/ml



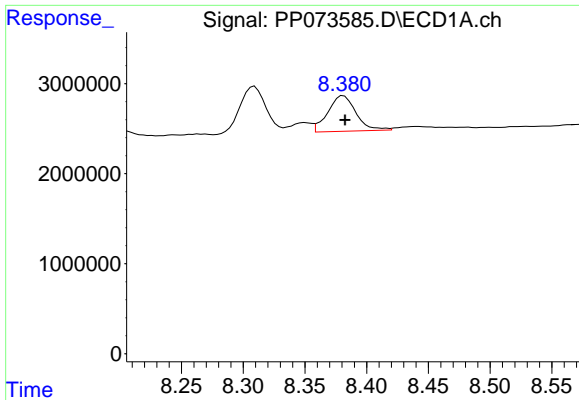
#34 AR-1260-4

R.T.: 8.050 min
 Delta R.T.: -0.015 min
 Response: 13893746
 Conc: 212.77 ng/ml



#34 AR-1260-4

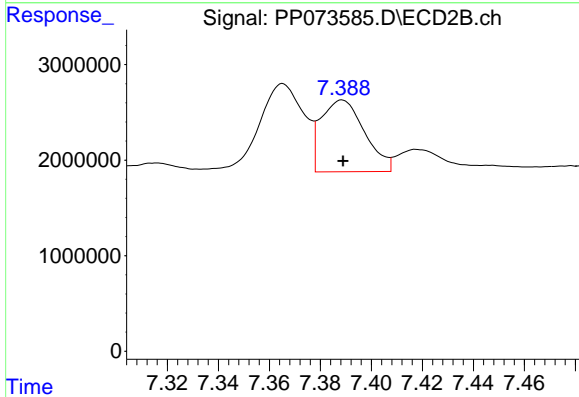
R.T.: 7.146 min
 Delta R.T.: 0.000 min
 Response: 3993620
 Conc: 44.67 ng/ml



#35 AR-1260-5

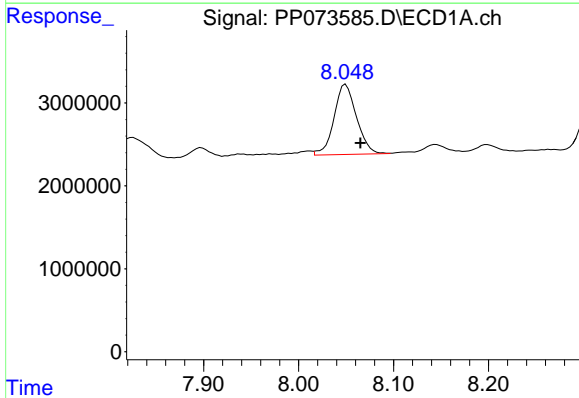
R.T.: 8.381 min
 Delta R.T.: -0.001 min
 Response: 6281850
 Conc: 41.64 ng/ml

Instrument :
 ECD_P
 ClientSampleId :
 ICVPP070825AR1254



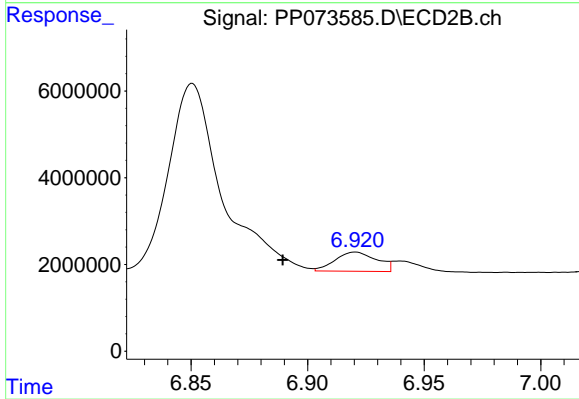
#35 AR-1260-5

R.T.: 7.389 min
 Delta R.T.: 0.000 min
 Response: 8895035
 Conc: 39.58 ng/ml



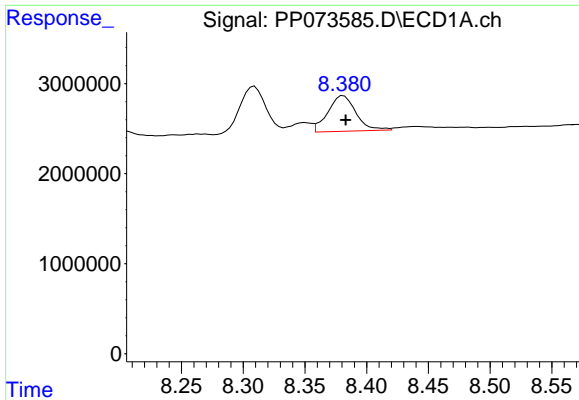
#36 AR-1262-1

R.T.: 8.050 min
 Delta R.T.: -0.015 min
 Response: 13893746
 Conc: 159.65 ng/ml



#36 AR-1262-1

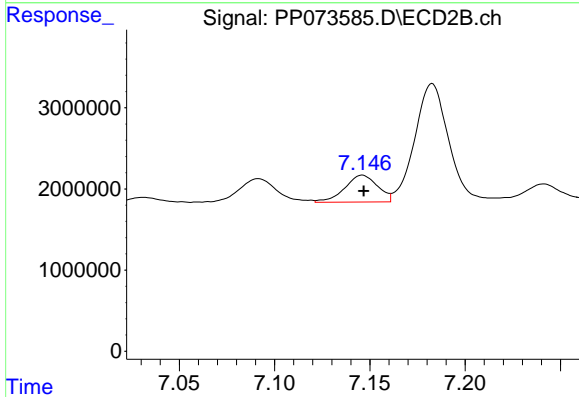
R.T.: 6.921 min
 Delta R.T.: 0.031 min
 Response: 5509922
 Conc: 37.31 ng/ml



#37 AR-1262-2

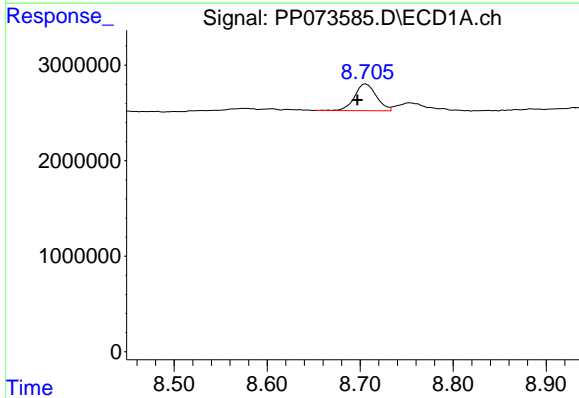
R.T.: 8.381 min
 Delta R.T.: -0.002 min
 Response: 6281850
 Conc: 31.72 ng/ml

Instrument :
 ECD_P
 ClientSampleId :
 ICVPP070825AR1254



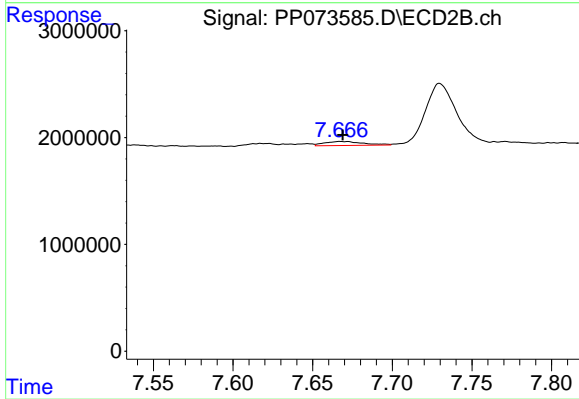
#37 AR-1262-2

R.T.: 7.146 min
 Delta R.T.: 0.000 min
 Response: 3993620
 Conc: 31.24 ng/ml



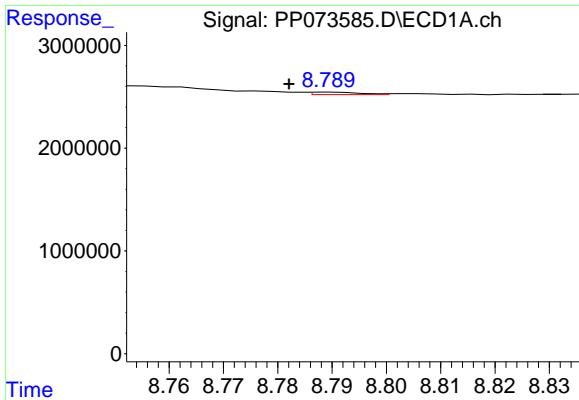
#38 AR-1262-3

R.T.: 8.706 min
 Delta R.T.: 0.009 min
 Response: 4511417
 Conc: 35.88 ng/ml



#38 AR-1262-3

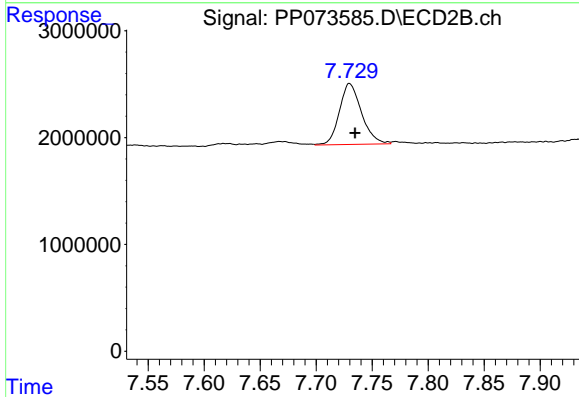
R.T.: 7.667 min
 Delta R.T.: -0.001 min
 Response: 628511
 Conc: 5.51 ng/ml



#39 AR-1262-4

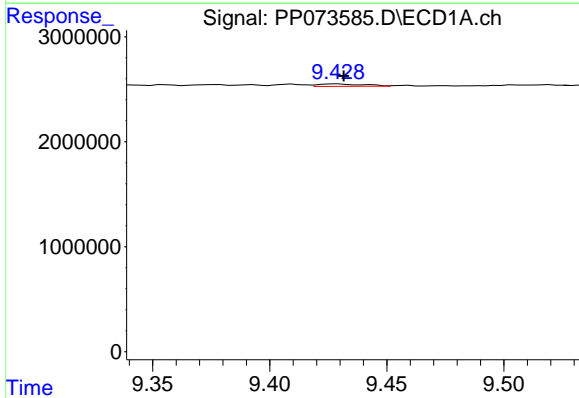
R.T.: 8.790 min
 Delta R.T.: 0.008 min
 Response: 158581
 Conc: 1.70 ng/ml

Instrument :
 ECD_P
 ClientSampleId :
 ICVPP070825AR1254



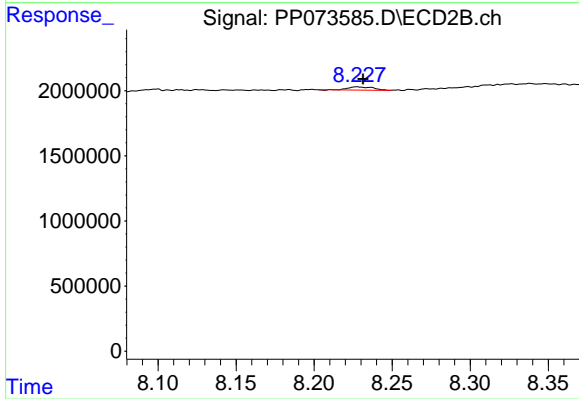
#39 AR-1262-4

R.T.: 7.730 min
 Delta R.T.: -0.005 min
 Response: 7842761
 Conc: 42.61 ng/ml



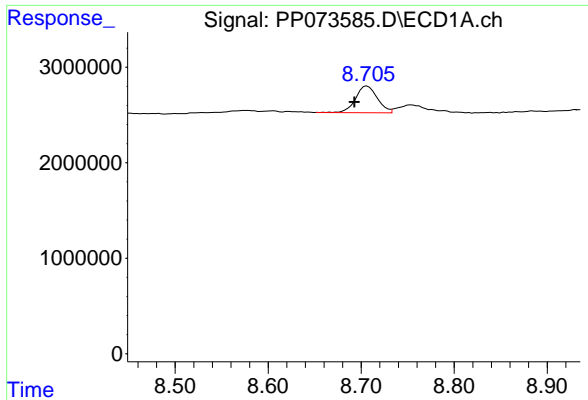
#40 AR-1262-5

R.T.: 9.429 min
 Delta R.T.: -0.002 min
 Response: 324171
 Conc: 5.11 ng/ml



#40 AR-1262-5

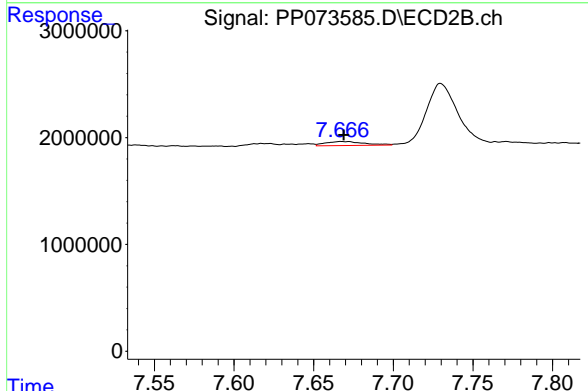
R.T.: 8.228 min
 Delta R.T.: -0.004 min
 Response: 279941
 Conc: 3.32 ng/ml



#41 AR-1268-1

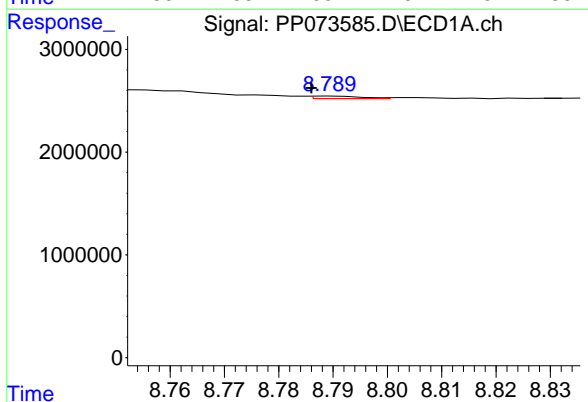
R.T.: 8.706 min
 Delta R.T.: 0.014 min
 Response: 4511417
 Conc: 20.21 ng/ml

Instrument :
 ECD_P
 ClientSampleId :
 ICVPP070825AR1254



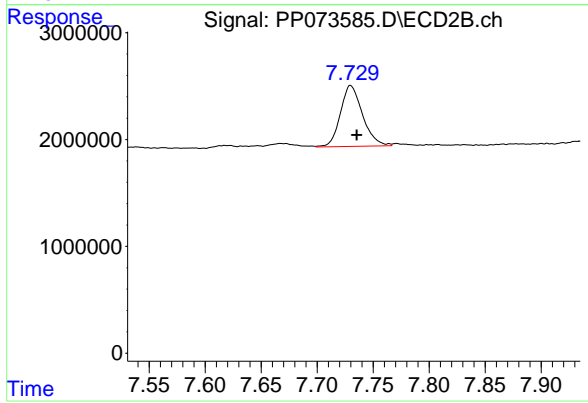
#41 AR-1268-1

R.T.: 7.667 min
 Delta R.T.: -0.002 min
 Response: 628511
 Conc: 2.04 ng/ml



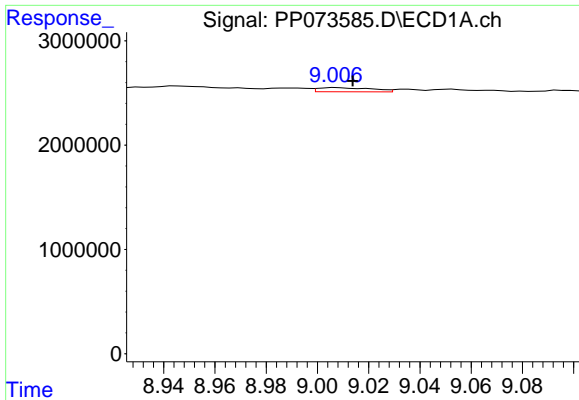
#42 AR-1268-2

R.T.: 8.790 min
 Delta R.T.: 0.004 min
 Response: 158581
 Conc: 0.83 ng/ml



#42 AR-1268-2

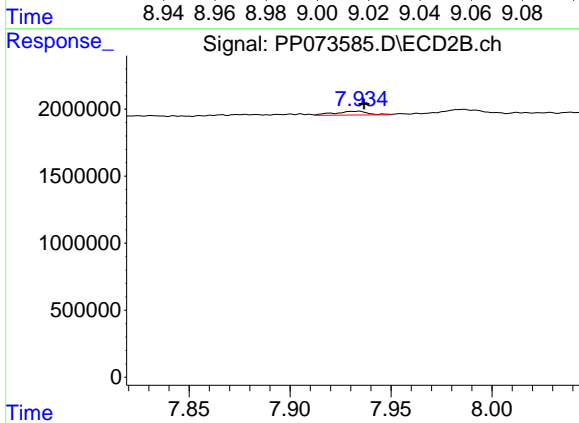
R.T.: 7.730 min
 Delta R.T.: -0.005 min
 Response: 7842761
 Conc: 29.52 ng/ml



#43 AR-1268-3

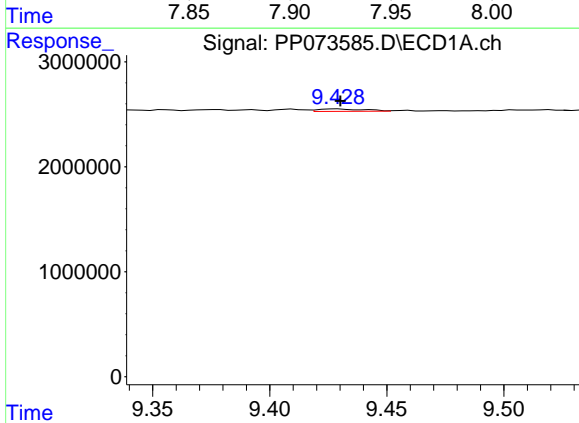
R.T.: 9.008 min
 Delta R.T.: -0.006 min
 Response: 576947
 Conc: 3.48 ng/ml

Instrument :
 ECD_P
 ClientSampleId :
 ICVPP070825AR1254



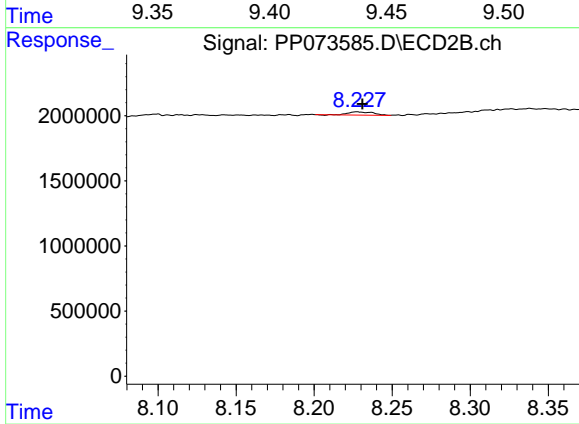
#43 AR-1268-3

R.T.: 7.934 min
 Delta R.T.: -0.003 min
 Response: 316374
 Conc: 1.40 ng/ml



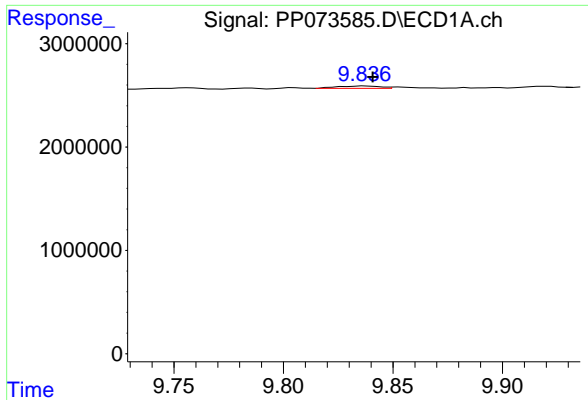
#44 AR-1268-4

R.T.: 9.429 min
 Delta R.T.: -0.001 min
 Response: 324171
 Conc: 4.66 ng/ml



#44 AR-1268-4

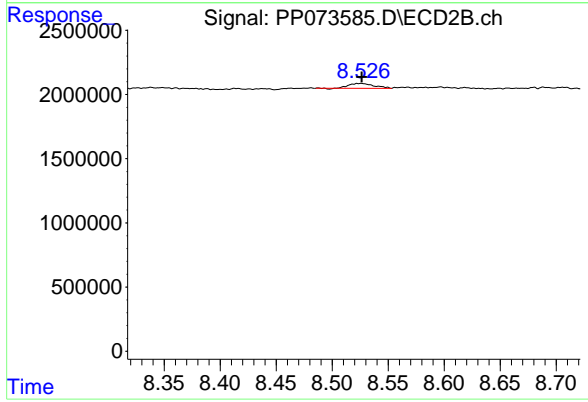
R.T.: 8.228 min
 Delta R.T.: -0.003 min
 Response: 279941
 Conc: 3.01 ng/ml



#45 AR-1268-5

R.T.: 9.838 min
Delta R.T.: -0.003 min
Response: 306024
Conc: 0.66 ng/ml

Instrument :
ECD_P
ClientSampleId :
ICVPP070825AR1254



#45 AR-1268-5

R.T.: 8.526 min
Delta R.T.: 0.000 min
Response: 589001
Conc: 0.96 ng/ml