

Data Path : Z:\pestpcbsrv\HPCHEM1\ECD_P\Data\PP070825\
 Data File : PP073587.D
 Signal(s) : Signal #1: ECD1A.ch Signal #2: ECD2B.ch
 Acq On : 08 Jul 2025 07:24
 Operator : YP\AJ
 Sample : DDT ANALOGUE
 Misc :
 ALS Vial : 36 Sample Multiplier: 1

Instrument :
 ECD_P
 ClientSampleId :
 DDT ANALOGUE

Integration File signal 1: autoint1.e
 Integration File signal 2: autoint2.e
 Quant Time: Jul 08 07:39:26 2025
 Quant Method : Z:\pestpcbsrv\HPCHEM1\ECD_P\methods\PP070825.M
 Quant Title : GC EXTRACTABLES
 QLast Update : Tue Jul 08 07:28:32 2025
 Response via : Initial Calibration
 Integrator: ChemStation

Volume Inj. : 2 µl
 Signal #1 Phase : ZB-MR1 Signal #2 Phase: ZB-MR2
 Signal #1 Info : 30Mx0.32mmx 0.50µ Signal #2 Info : 30M x 0.32mm x 0.25µm

Compound	RT#1	RT#2	Resp#1	Resp#2	ng/ml	ng/ml
System Monitoring Compounds						
1) SA Tetrachlo...	4.528f	3.791	156602	28822	0.114	0.016 #
2) SA Decachlor...	10.189	0.000	83357	0	0.076	N.D. #
Target Compounds						
3) L1 AR-1016-1	5.629	4.855	262256	144164	5.520	2.115 #
4) L1 AR-1016-2	5.660	4.866	78221	75378	1.098	0.740 #
5) L1 AR-1016-3	5.729	5.053	108198	106895	2.478	1.976
6) L1 AR-1016-4	5.841	5.096	594733	101903	16.545	2.322 #
7) L1 AR-1016-5	6.128	5.307	399352	98417	12.746	1.803 #
8) L2 AR-1221-1	4.704	3.987	123709	85902	6.924	3.176 #
9) L2 AR-1221-2	4.787	4.078	131612	66648	9.746	3.273 #
10) L2 AR-1221-3	4.837	4.154	137109	55329	3.296	0.900 #
11) L3 AR-1232-1	4.837	4.154	137109	55329	4.199	1.187 #
12) L3 AR-1232-2	5.367	4.866	52251	75378	3.214	1.582 #
13) L3 AR-1232-3	5.660	5.053	78221	106895	2.371	4.271 #
14) L3 AR-1232-4	5.841	5.133	594733	52560	36.165	2.427 #
15) L3 AR-1232-5	5.926	5.307	225320	98417	21.316	4.362 #
16) L4 AR-1242-1	5.629	4.855	262256	144164	6.867	2.496 #
17) L4 AR-1242-2	5.660	4.866	78221	75378	1.306	0.872 #
18) L4 AR-1242-3	5.729	5.053	108198	106895	2.955	2.327
19) L4 AR-1242-4	5.841	5.133	594733	52560	18.507	1.187 #
20) L4 AR-1242-5	6.560	5.694f	470445	333494	14.370	6.037 #
21) L5 AR-1248-1	5.629	4.855	262256	144164	8.495	3.211 #
22) L5 AR-1248-2	5.926	5.090	225320	129998	5.644	2.113 #
23) L5 AR-1248-3	6.128	5.133	399352	52560	8.992	0.820 #
24) L5 AR-1248-4	6.501	5.307	158655	98417	2.880	1.306 #
25) L5 AR-1248-5	6.560	5.694	470445	333494	8.746	4.471 #
26) L6 AR-1254-1	6.501	5.694f	158655	333494	2.961	2.874
27) L6 AR-1254-2	6.695	5.823	11764646	20002008	141.251	198.781 #
28) L6 AR-1254-3	7.071	6.221	3450627	3590877	39.064	23.250 #
29) L6 AR-1254-4	7.342	6.441	774719	261557	9.848	2.766 #
30) L6 AR-1254-5	7.781	6.847	443.5E6	733.7E6	6018.620	5498.102
31) L7 AR-1260-1	7.221	6.334	925064	324959	15.689	3.331 #
32) L7 AR-1260-2	7.468	6.526	582.4E6	4065520	6076.608	33.097 #
33) L7 AR-1260-3	7.781f	6.652	443.5E6	-2266181	6068.796	N.D. #
34) L7 AR-1260-4	8.069	7.147	112077	433079	1.716	4.844 #
35) L7 AR-1260-5	8.375	7.390	1034975	1122014	6.861	4.993 #
36) L8 AR-1262-1	8.069	6.847f	112077	733.7E6	1.288	4967.737 #
37) L8 AR-1262-2	8.375	7.147	1034975	433079	5.226	3.388 #
38) L8 AR-1262-3	8.720	7.674	599976	395392	4.772	3.468 #
39) L8 AR-1262-4	8.755	7.715	1223377	316925	13.118	1.722 #
40) L8 AR-1262-5	9.455	8.187f	77739	75032	1.226	0.889 #
41) L9 AR-1268-1	8.720	7.674	599976	395392	2.688	1.286 #

Data Path : Z:\pestpcbsrv\HPCHEM1\ECD_P\Data\PP070825\
 Data File : PP073587.D
 Signal(s) : Signal #1: ECD1A.ch Signal #2: ECD2B.ch
 Acq On : 08 Jul 2025 07:24
 Operator : YP\AJ
 Sample : DDT ANALOGUE
 Misc :
 ALS Vial : 36 Sample Multiplier: 1

Instrument :
 ECD_P
ClientSampleId :
 DDT ANALOGUE

Integration File signal 1: autoint1.e
 Integration File signal 2: autoint2.e
 Quant Time: Jul 08 07:39:26 2025
 Quant Method : Z:\pestpcbsrv\HPCHEM1\ECD_P\methods\PP070825.M
 Quant Title : GC EXTRACTABLES
 QLast Update : Tue Jul 08 07:28:32 2025
 Response via : Initial Calibration
 Integrator: ChemStation

Volume Inj. : 2 µl
 Signal #1 Phase : ZB-MR1 Signal #2 Phase: ZB-MR2
 Signal #1 Info : 30Mx0.32mmx 0.50µ Signal #2 Info : 30M x 0.32mm x 0.25µm

	Compound	RT#1	RT#2	Resp#1	Resp#2	ng/ml	ng/ml
42)	L9 AR-1268-2	8.755	7.715	1223377	316925	6.422	1.193 #
43)	L9 AR-1268-3	8.979	7.916	452576	86892	2.733	0.385 #
44)	L9 AR-1268-4	9.401	8.187f	189948	75032	2.731	0.807 #
45)	L9 AR-1268-5	9.879f	8.519	110921	116778	0.241	0.189

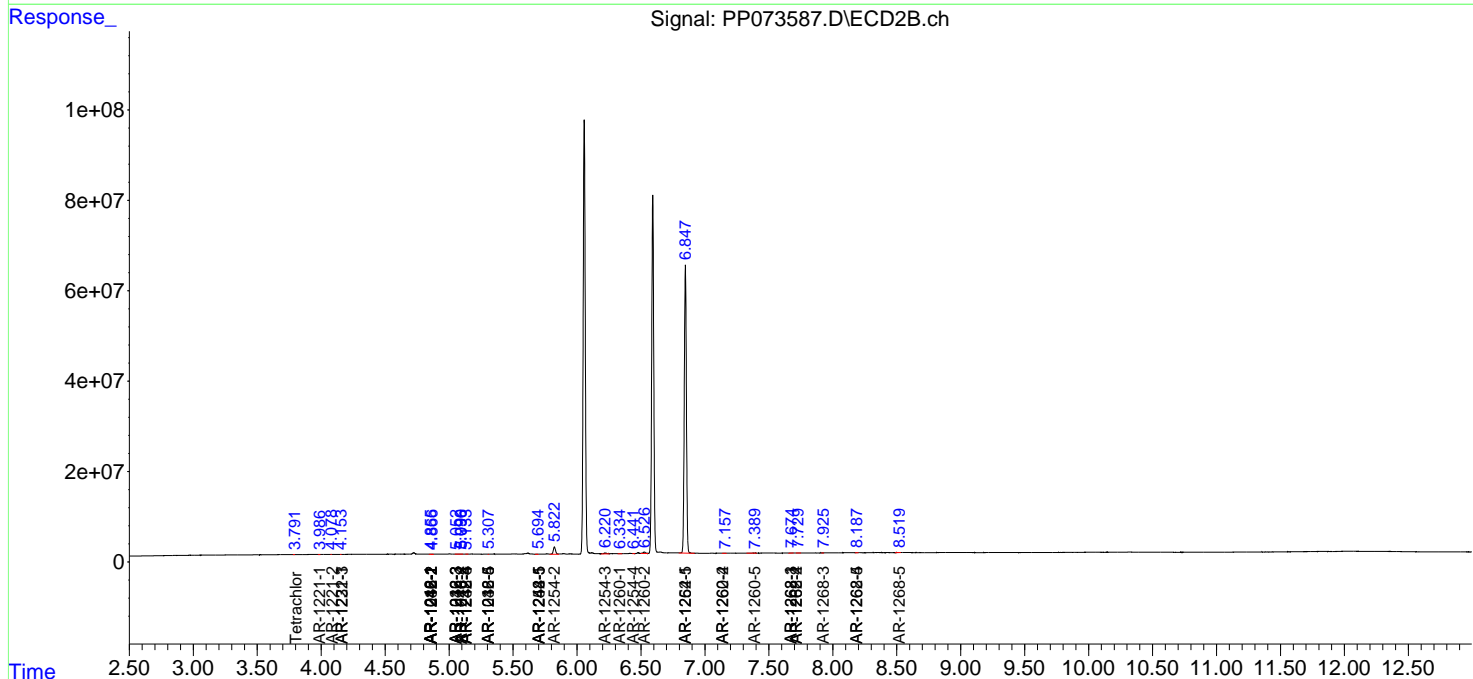
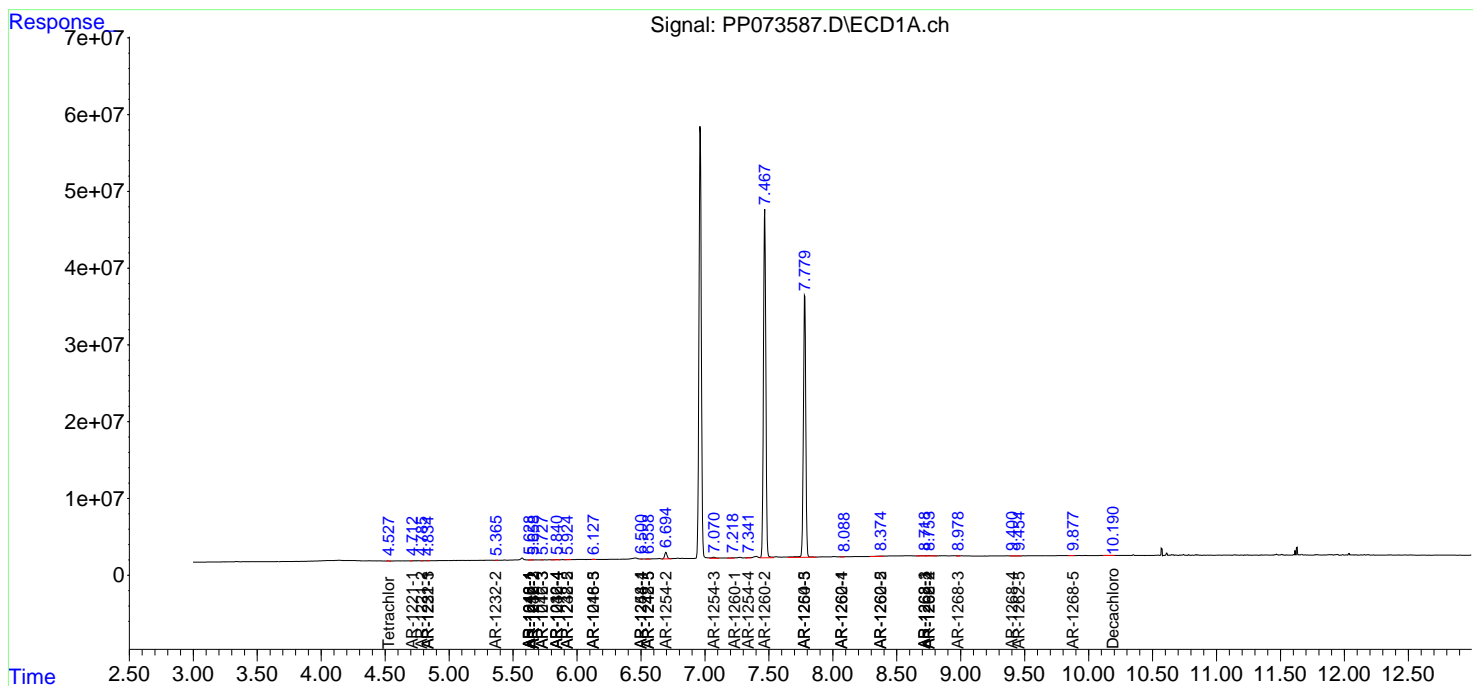
(f)=RT Delta > 1/2 Window (#)=Amounts differ by > 25% (m)=manual int.

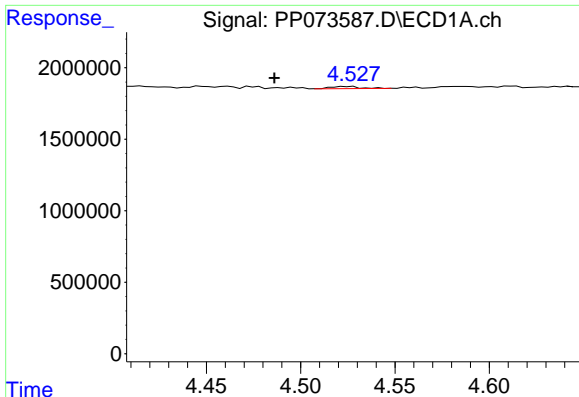
Data Path : Z:\pestpcbsrv\HPCHEM1\ECD_P\Data\PP070825\
 Data File : PP073587.D
 Signal(s) : Signal #1: ECD1A.ch Signal #2: ECD2B.ch
 Acq On : 08 Jul 2025 07:24
 Operator : YP\AJ
 Sample : DDT ANALOGUE
 Misc :
 ALS Vial : 36 Sample Multiplier: 1

Instrument :
 ECD_P
 ClientSampleId :
 DDT ANALOGUE

Integration File signal 1: autoint1.e
 Integration File signal 2: autoint2.e
 Quant Time: Jul 08 07:39:26 2025
 Quant Method : Z:\pestpcbsrv\HPCHEM1\ECD_P\methods\PP070825.M
 Quant Title : GC EXTRACTABLES
 QLast Update : Tue Jul 08 07:28:32 2025
 Response via : Initial Calibration
 Integrator: ChemStation

Volume Inj. : 2 µl
 Signal #1 Phase : ZB-MR1 Signal #2 Phase: ZB-MR2
 Signal #1 Info : 30Mx0.32mmx 0.50µ Signal #2 Info : 30M x 0.32mm x 0.25µm

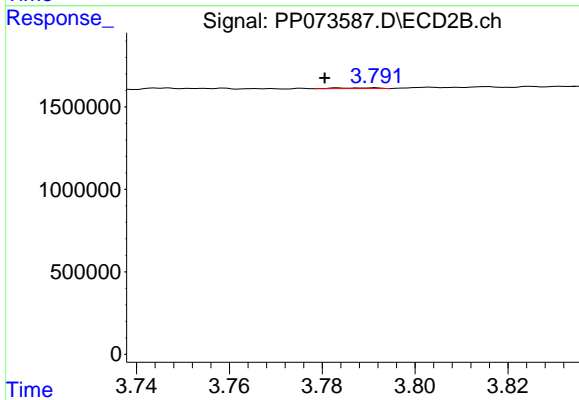




#1 Tetrachloro-m-xylene

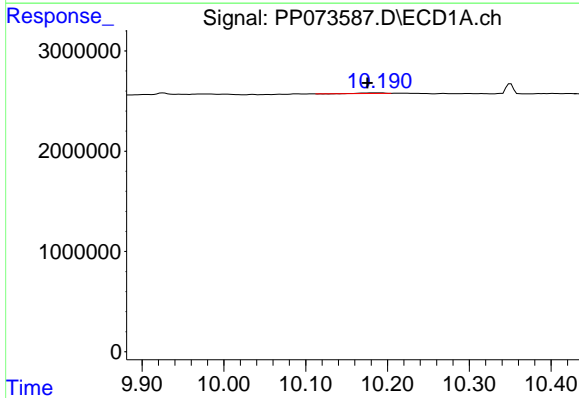
R.T.: 4.528 min
 Delta R.T.: 0.042 min
 Response: 156602
 Conc: 0.11 ng/ml

Instrument :
 ECD_P
 ClientSampleId :
 DDT ANALOGUE



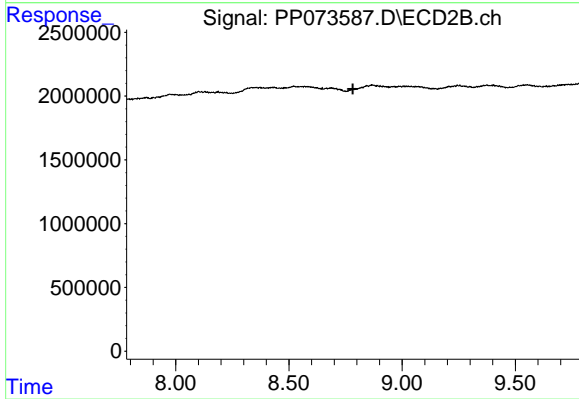
#1 Tetrachloro-m-xylene

R.T.: 3.791 min
 Delta R.T.: 0.011 min
 Response: 28822
 Conc: 0.02 ng/ml



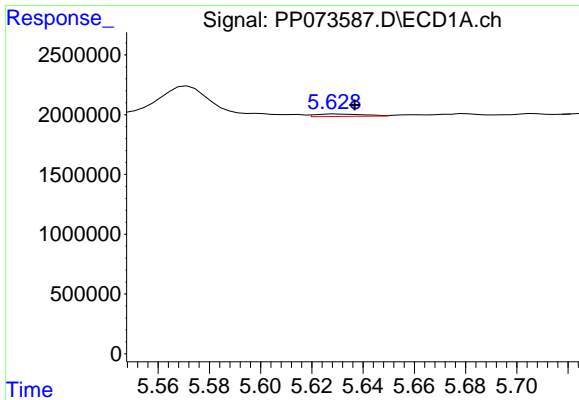
#2 Decachlorobiphenyl

R.T.: 10.189 min
 Delta R.T.: 0.014 min
 Response: 83357
 Conc: 0.08 ng/ml



#2 Decachlorobiphenyl

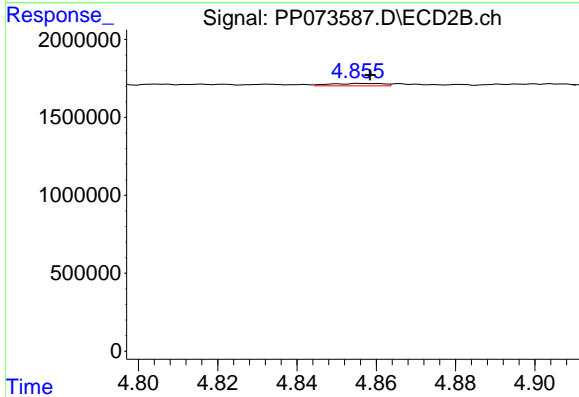
R.T.: 0.000 min
 Exp R.T. : 8.782 min
 Response: 0
 Conc: N.D.



#3 AR-1016-1

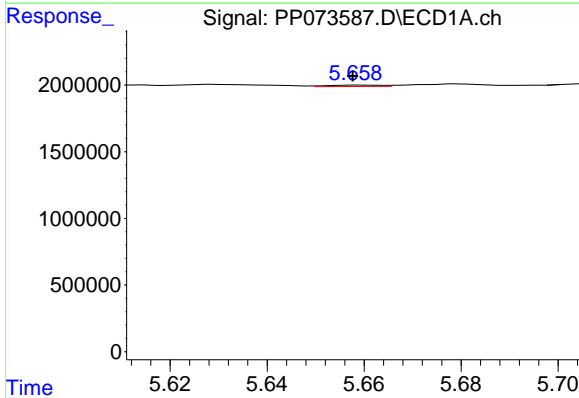
R.T.: 5.629 min
 Delta R.T.: -0.007 min
 Response: 262256
 Conc: 5.52 ng/ml

Instrument :
 ECD_P
 ClientSampleId :
 DDT ANALOGUE



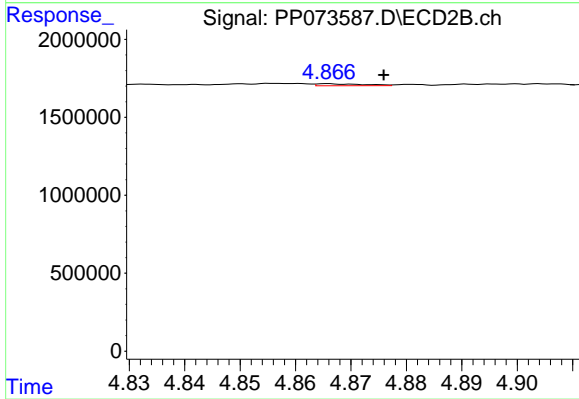
#3 AR-1016-1

R.T.: 4.855 min
 Delta R.T.: -0.003 min
 Response: 144164
 Conc: 2.11 ng/ml



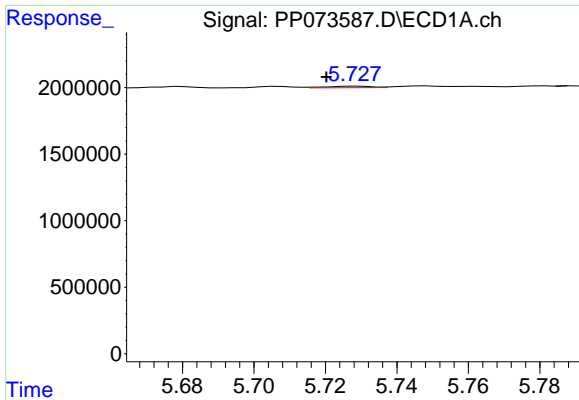
#4 AR-1016-2

R.T.: 5.660 min
 Delta R.T.: 0.002 min
 Response: 78221
 Conc: 1.10 ng/ml



#4 AR-1016-2

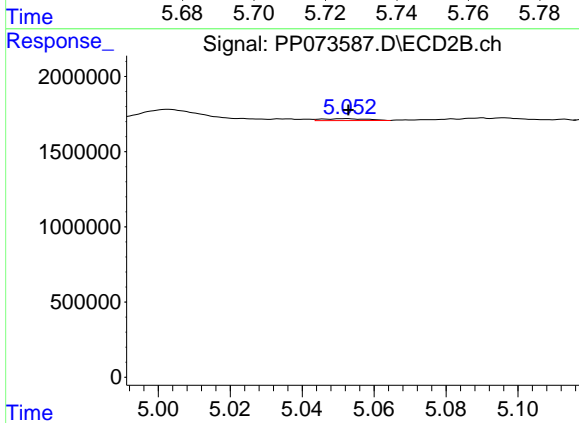
R.T.: 4.866 min
 Delta R.T.: -0.010 min
 Response: 75378
 Conc: 0.74 ng/ml



#5 AR-1016-3

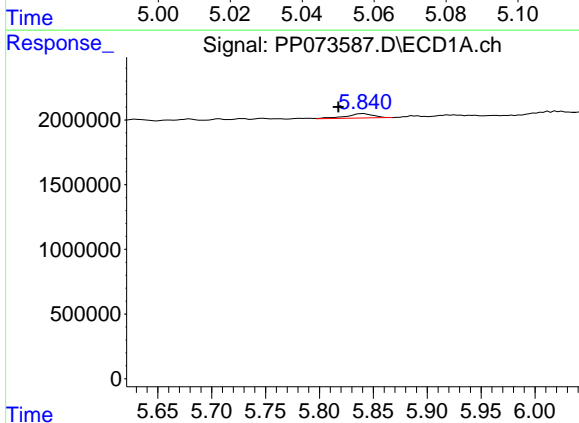
R.T.: 5.729 min
 Delta R.T.: 0.009 min
 Response: 108198
 Conc: 2.48 ng/ml

Instrument :
 ECD_P
 ClientSampleId :
 DDT ANALOGUE



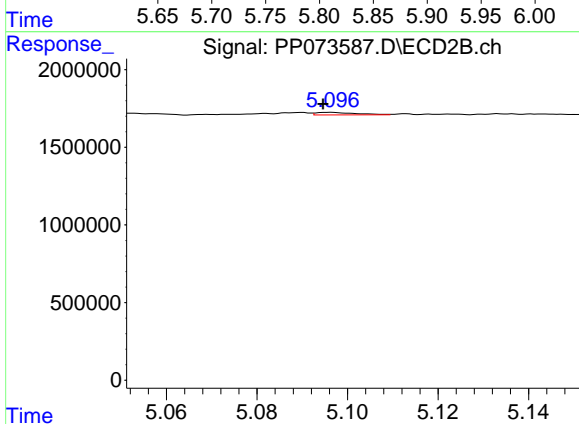
#5 AR-1016-3

R.T.: 5.053 min
 Delta R.T.: 0.000 min
 Response: 106895
 Conc: 1.98 ng/ml



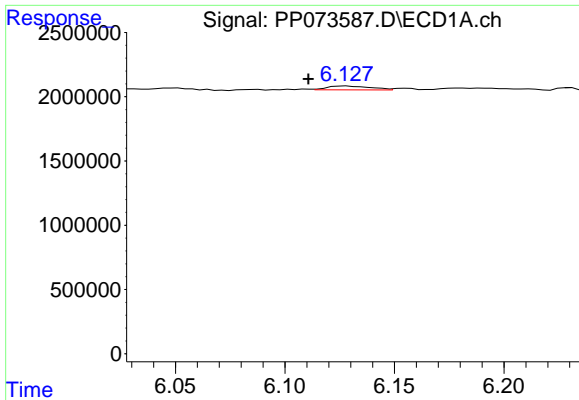
#6 AR-1016-4

R.T.: 5.841 min
 Delta R.T.: 0.024 min
 Response: 594733
 Conc: 16.55 ng/ml



#6 AR-1016-4

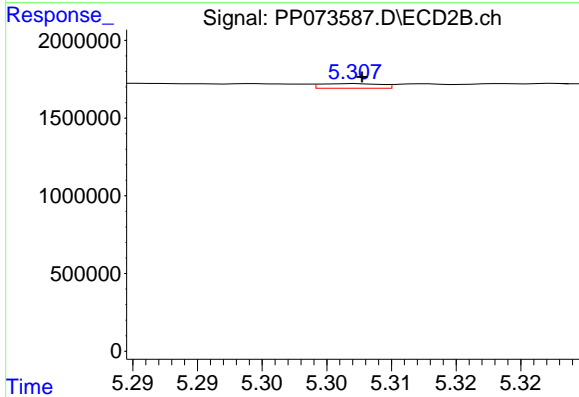
R.T.: 5.096 min
 Delta R.T.: 0.002 min
 Response: 101903
 Conc: 2.32 ng/ml



#7 AR-1016-5

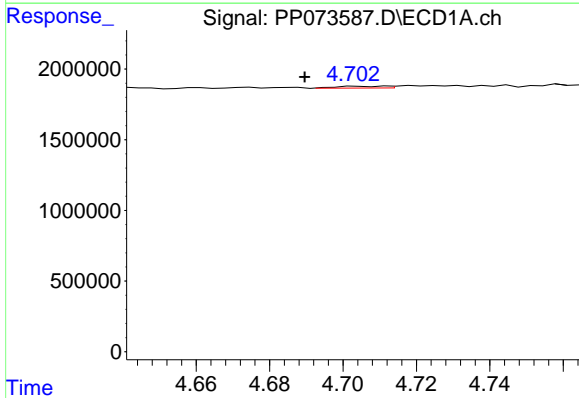
R.T.: 6.128 min
 Delta R.T.: 0.018 min
 Response: 399352
 Conc: 12.75 ng/ml

Instrument :
 ECD_P
 ClientSampleId :
 DDT ANALOGUE



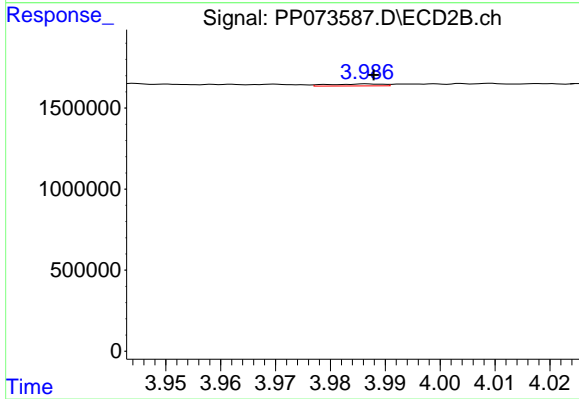
#7 AR-1016-5

R.T.: 5.307 min
 Delta R.T.: 0.000 min
 Response: 98417
 Conc: 1.80 ng/ml



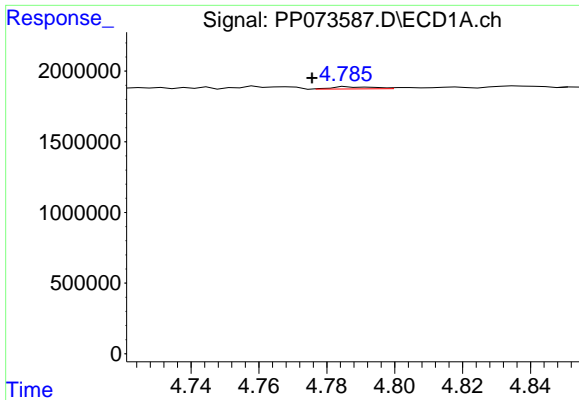
#8 AR-1221-1

R.T.: 4.704 min
 Delta R.T.: 0.014 min
 Response: 123709
 Conc: 6.92 ng/ml



#8 AR-1221-1

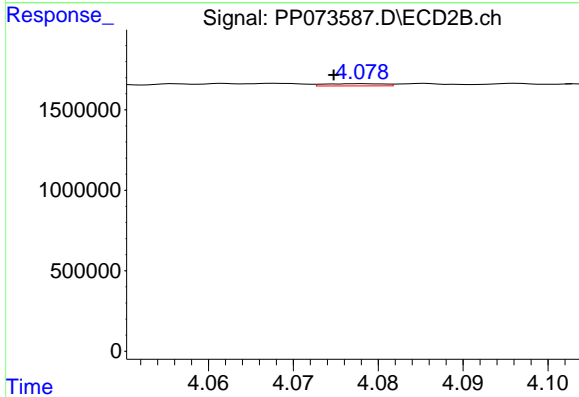
R.T.: 3.987 min
 Delta R.T.: -0.001 min
 Response: 85902
 Conc: 3.18 ng/ml



#9 AR-1221-2

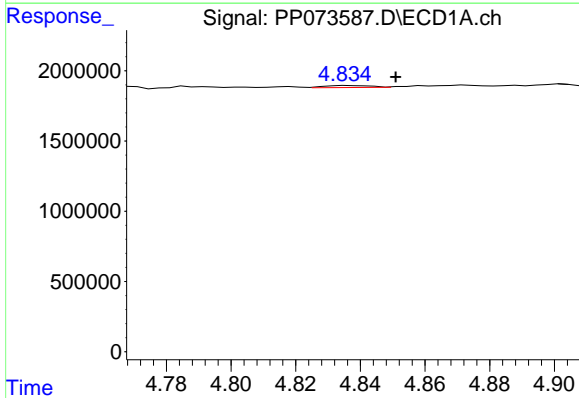
R.T.: 4.787 min
 Delta R.T.: 0.011 min
 Response: 131612
 Conc: 9.75 ng/ml

Instrument :
 ECD_P
 ClientSampleId :
 DDT ANALOGUE



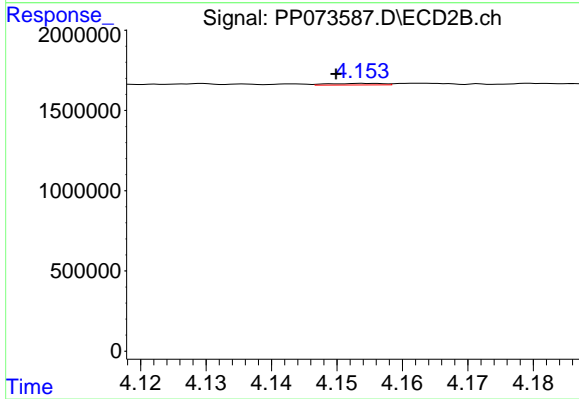
#9 AR-1221-2

R.T.: 4.078 min
 Delta R.T.: 0.003 min
 Response: 66648
 Conc: 3.27 ng/ml



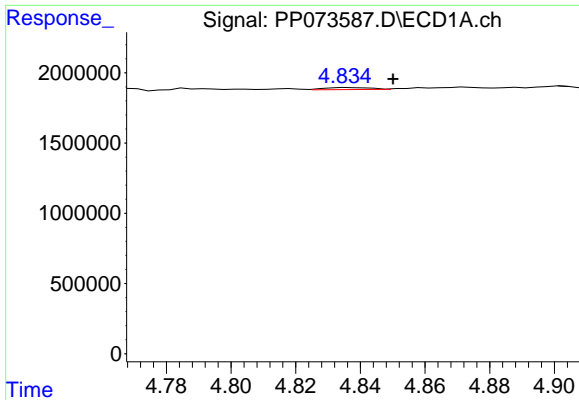
#10 AR-1221-3

R.T.: 4.837 min
 Delta R.T.: -0.014 min
 Response: 137109
 Conc: 3.30 ng/ml



#10 AR-1221-3

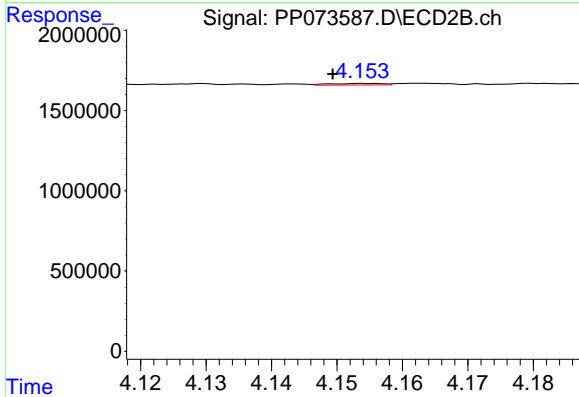
R.T.: 4.154 min
 Delta R.T.: 0.004 min
 Response: 55329
 Conc: 0.90 ng/ml



#11 AR-1232-1

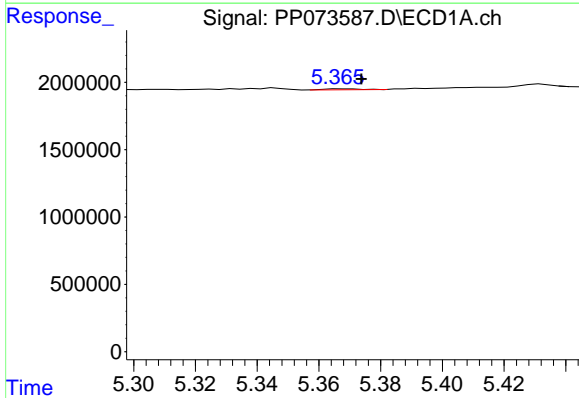
R.T.: 4.837 min
 Delta R.T.: -0.013 min
 Response: 137109
 Conc: 4.20 ng/ml

Instrument :
 ECD_P
 ClientSampleId :
 DDT ANALOGUE



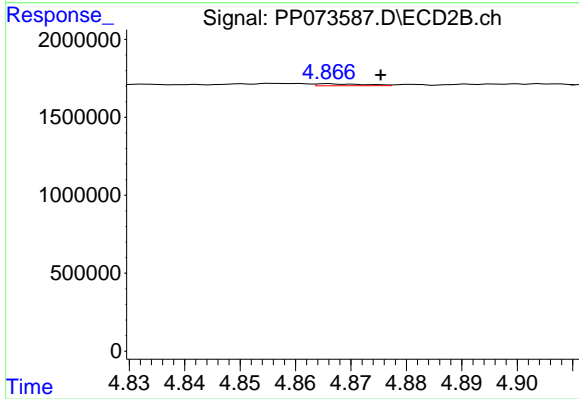
#11 AR-1232-1

R.T.: 4.154 min
 Delta R.T.: 0.005 min
 Response: 55329
 Conc: 1.19 ng/ml



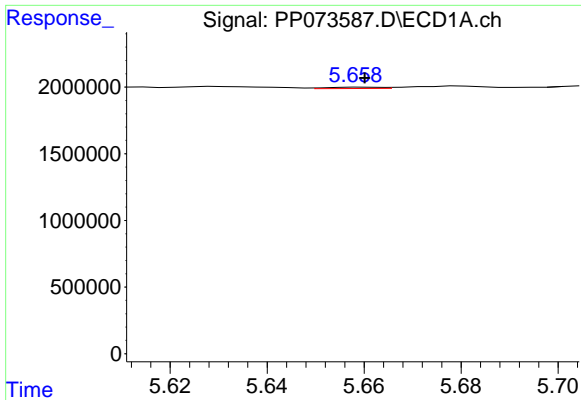
#12 AR-1232-2

R.T.: 5.367 min
 Delta R.T.: -0.007 min
 Response: 52251
 Conc: 3.21 ng/ml



#12 AR-1232-2

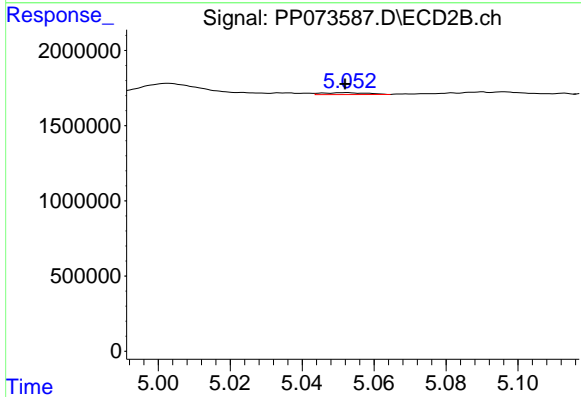
R.T.: 4.866 min
 Delta R.T.: -0.009 min
 Response: 75378
 Conc: 1.58 ng/ml



#13 AR-1232-3

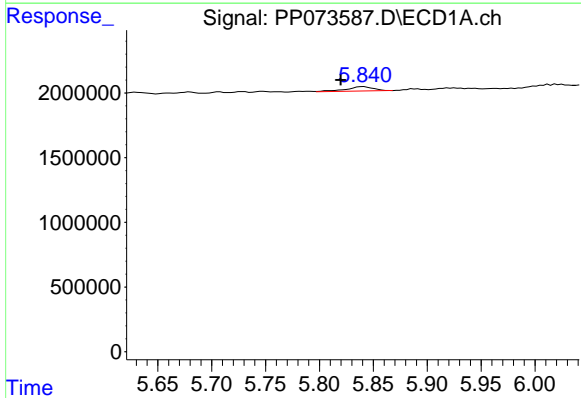
R.T.: 5.660 min
 Delta R.T.: 0.000 min
 Response: 78221
 Conc: 2.37 ng/ml

Instrument :
 ECD_P
 ClientSampleId :
 DDT ANALOGUE



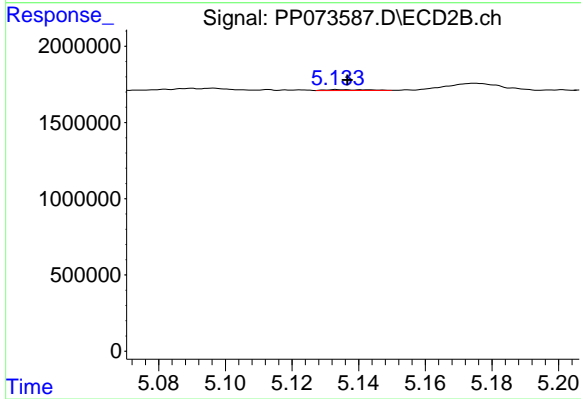
#13 AR-1232-3

R.T.: 5.053 min
 Delta R.T.: 0.000 min
 Response: 106895
 Conc: 4.27 ng/ml



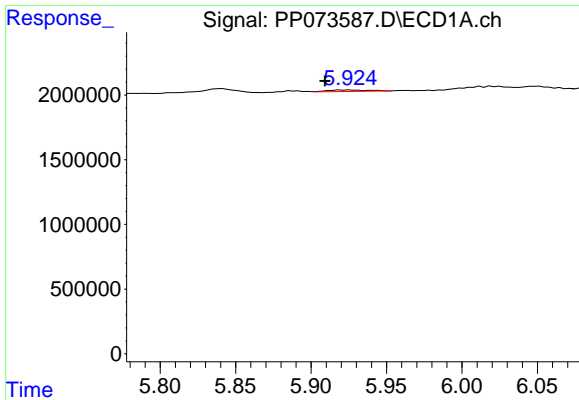
#14 AR-1232-4

R.T.: 5.841 min
 Delta R.T.: 0.021 min
 Response: 594733
 Conc: 36.16 ng/ml



#14 AR-1232-4

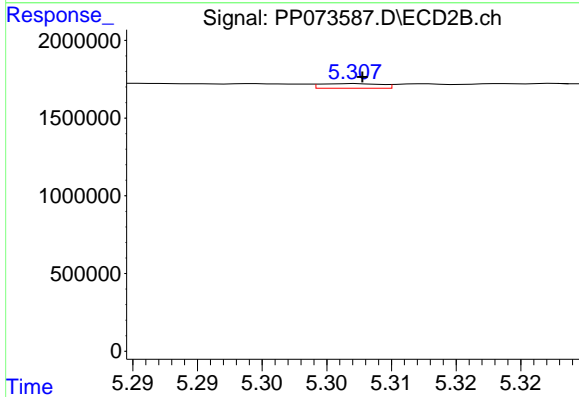
R.T.: 5.133 min
 Delta R.T.: -0.003 min
 Response: 52560
 Conc: 2.43 ng/ml



#15 AR-1232-5

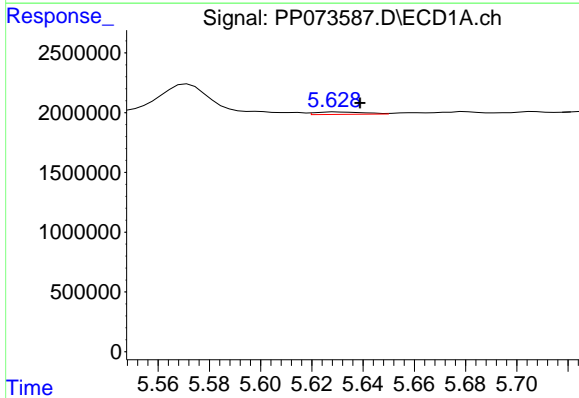
R.T.: 5.926 min
 Delta R.T.: 0.016 min
 Response: 225320
 Conc: 21.32 ng/ml

Instrument :
 ECD_P
 ClientSampleId :
 DDT ANALOGUE



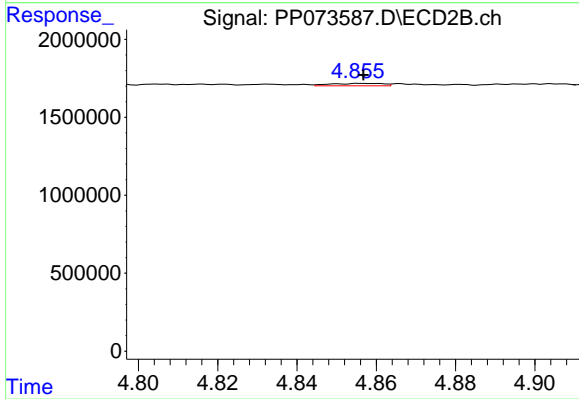
#15 AR-1232-5

R.T.: 5.307 min
 Delta R.T.: 0.000 min
 Response: 98417
 Conc: 4.36 ng/ml



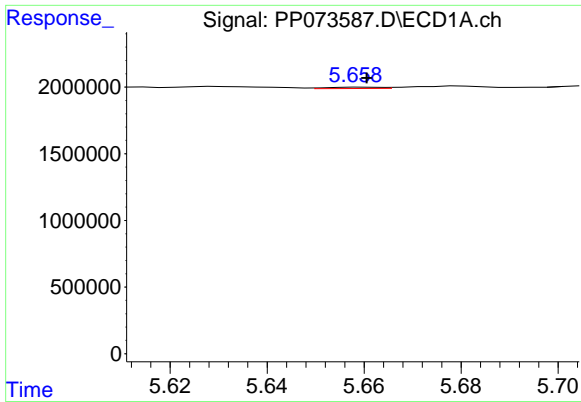
#16 AR-1242-1

R.T.: 5.629 min
 Delta R.T.: -0.009 min
 Response: 262256
 Conc: 6.87 ng/ml



#16 AR-1242-1

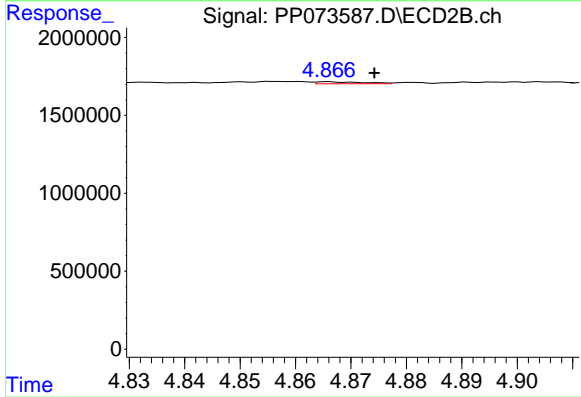
R.T.: 4.855 min
 Delta R.T.: -0.001 min
 Response: 144164
 Conc: 2.50 ng/ml



#17 AR-1242-2

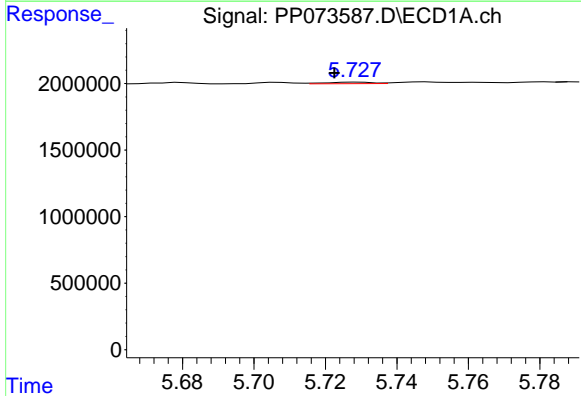
R.T.: 5.660 min
 Delta R.T.: 0.000 min
 Response: 78221
 Conc: 1.31 ng/ml

Instrument :
 ECD_P
 ClientSampleId :
 DDT ANALOGUE



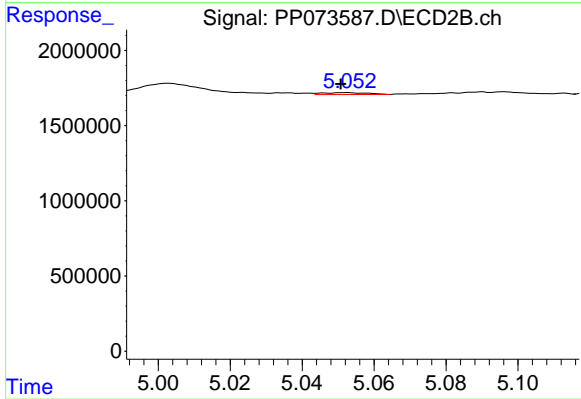
#17 AR-1242-2

R.T.: 4.866 min
 Delta R.T.: -0.008 min
 Response: 75378
 Conc: 0.87 ng/ml



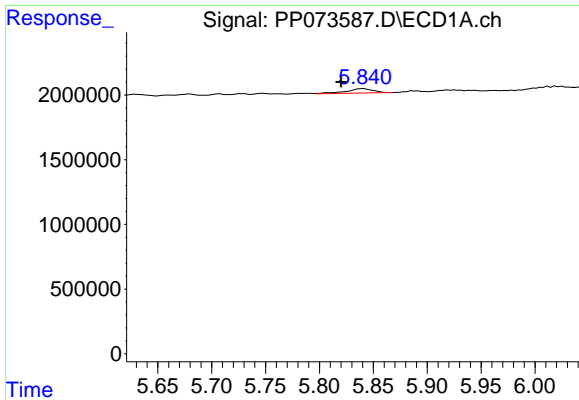
#18 AR-1242-3

R.T.: 5.729 min
 Delta R.T.: 0.007 min
 Response: 108198
 Conc: 2.95 ng/ml



#18 AR-1242-3

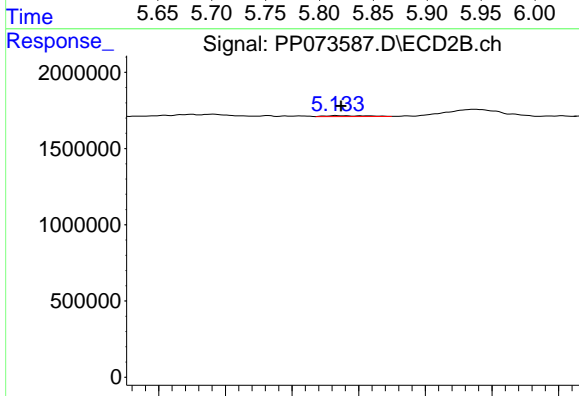
R.T.: 5.053 min
 Delta R.T.: 0.002 min
 Response: 106895
 Conc: 2.33 ng/ml



#19 AR-1242-4

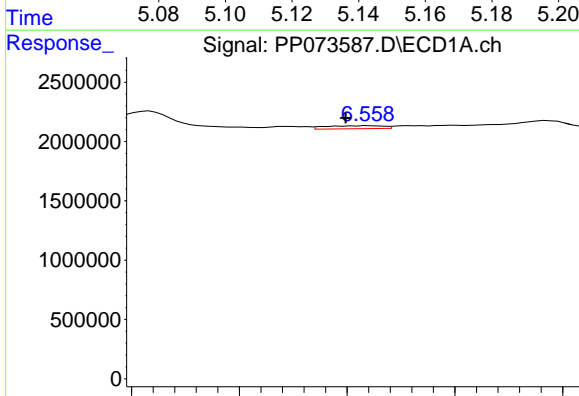
R.T.: 5.841 min
 Delta R.T.: 0.021 min
 Response: 594733
 Conc: 18.51 ng/ml

Instrument :
 ECD_P
 ClientSampleId :
 DDT ANALOGUE



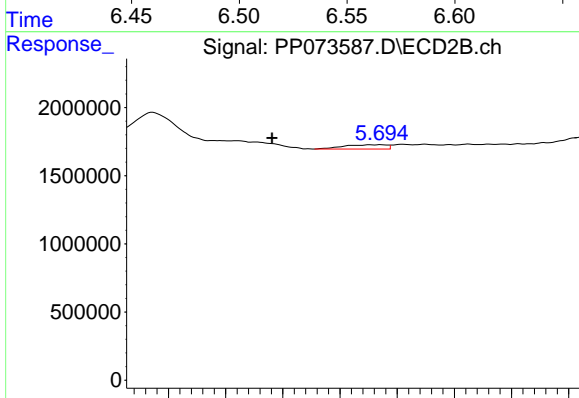
#19 AR-1242-4

R.T.: 5.133 min
 Delta R.T.: -0.001 min
 Response: 52560
 Conc: 1.19 ng/ml



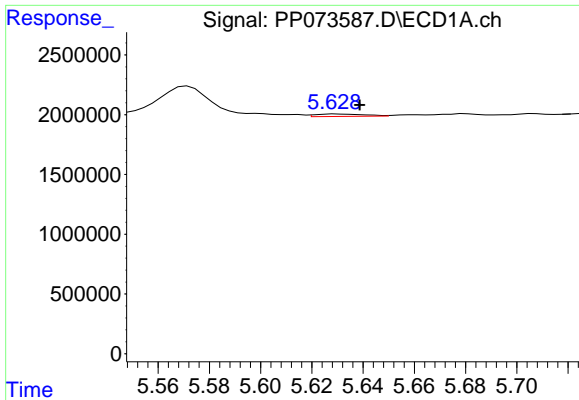
#20 AR-1242-5

R.T.: 6.560 min
 Delta R.T.: 0.011 min
 Response: 470445
 Conc: 14.37 ng/ml



#20 AR-1242-5

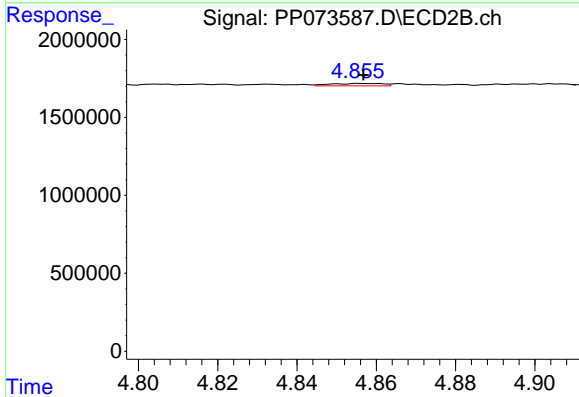
R.T.: 5.694 min
 Delta R.T.: 0.038 min
 Response: 333494
 Conc: 6.04 ng/ml



#21 AR-1248-1

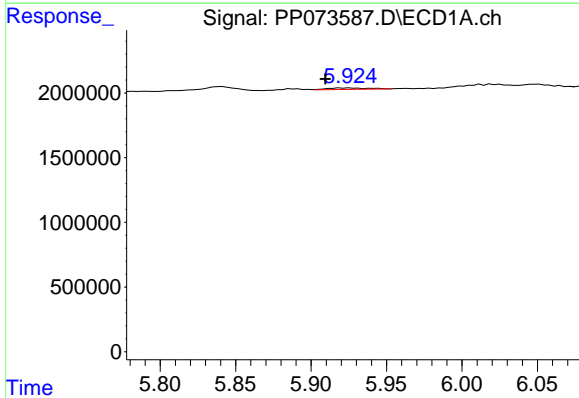
R.T.: 5.629 min
 Delta R.T.: -0.009 min
 Response: 262256
 Conc: 8.50 ng/ml

Instrument :
 ECD_P
 ClientSampleId :
 DDT ANALOGUE



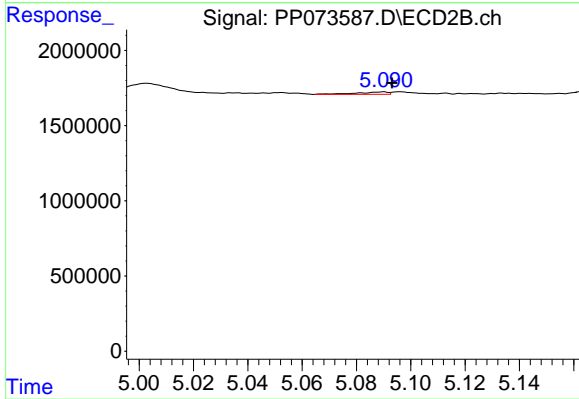
#21 AR-1248-1

R.T.: 4.855 min
 Delta R.T.: -0.001 min
 Response: 144164
 Conc: 3.21 ng/ml



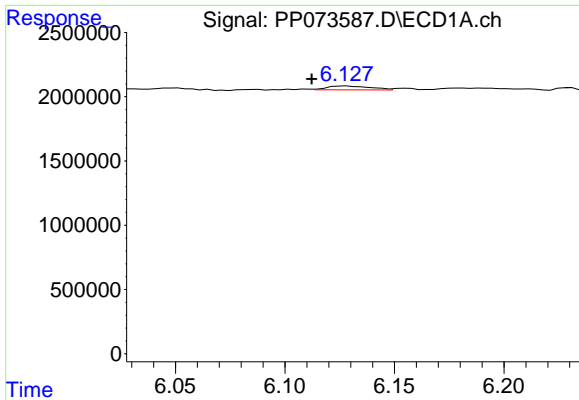
#22 AR-1248-2

R.T.: 5.926 min
 Delta R.T.: 0.016 min
 Response: 225320
 Conc: 5.64 ng/ml



#22 AR-1248-2

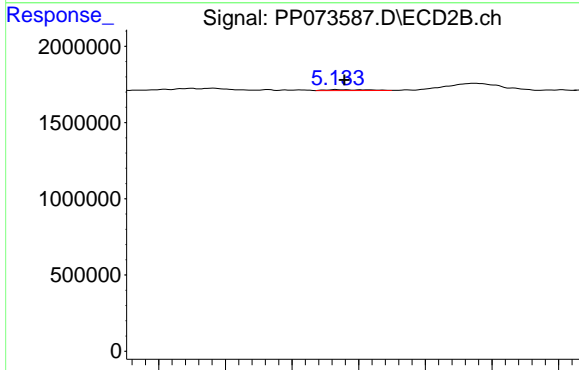
R.T.: 5.090 min
 Delta R.T.: -0.003 min
 Response: 129998
 Conc: 2.11 ng/ml



#23 AR-1248-3

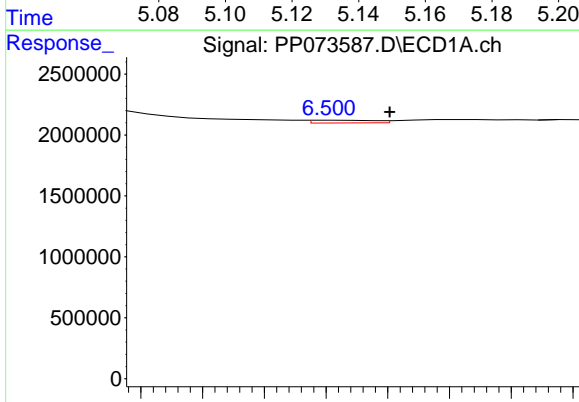
R.T.: 6.128 min
 Delta R.T.: 0.016 min
 Response: 399352
 Conc: 8.99 ng/ml

Instrument :
 ECD_P
 ClientSampleId :
 DDT ANALOGUE



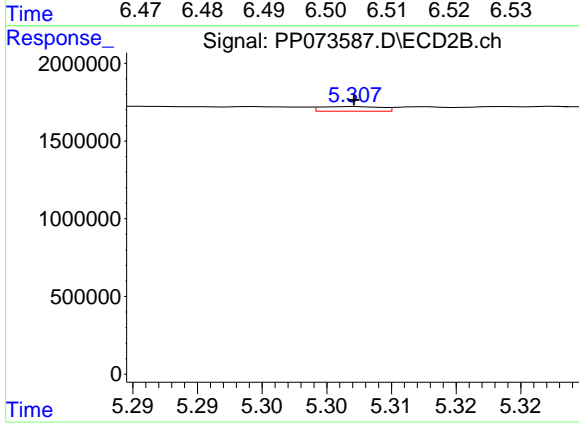
#23 AR-1248-3

R.T.: 5.133 min
 Delta R.T.: -0.002 min
 Response: 52560
 Conc: 0.82 ng/ml



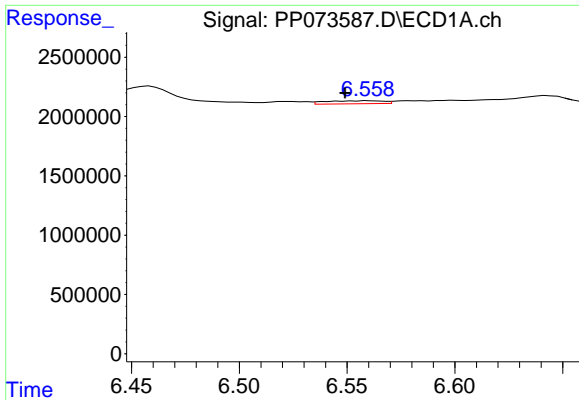
#24 AR-1248-4

R.T.: 6.501 min
 Delta R.T.: -0.009 min
 Response: 158655
 Conc: 2.88 ng/ml



#24 AR-1248-4

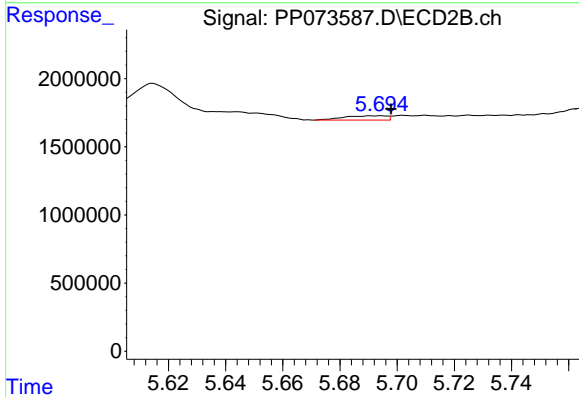
R.T.: 5.307 min
 Delta R.T.: 0.000 min
 Response: 98417
 Conc: 1.31 ng/ml



#25 AR-1248-5

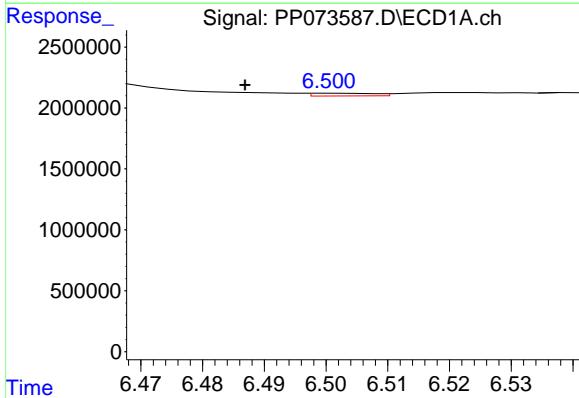
R.T.: 6.560 min
 Delta R.T.: 0.011 min
 Response: 470445
 Conc: 8.75 ng/ml

Instrument :
 ECD_P
 ClientSampleId :
 DDT ANALOGUE



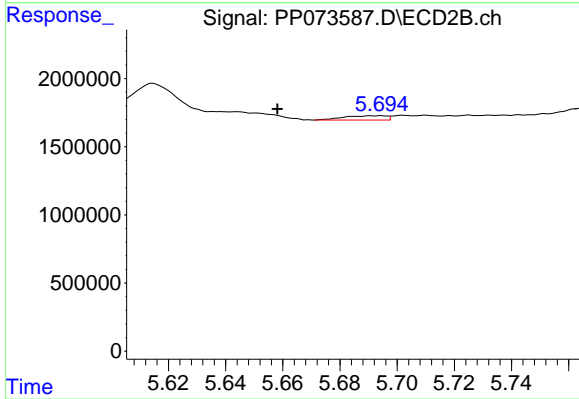
#25 AR-1248-5

R.T.: 5.694 min
 Delta R.T.: -0.003 min
 Response: 333494
 Conc: 4.47 ng/ml



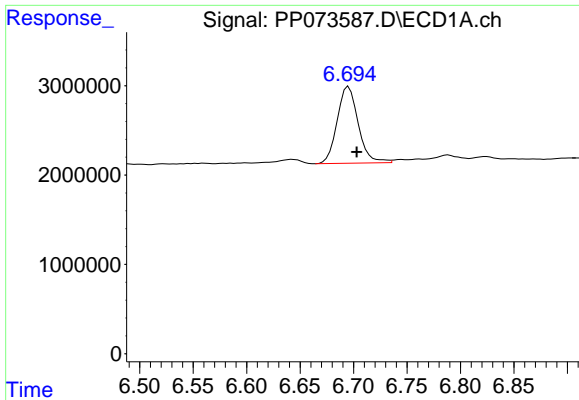
#26 AR-1254-1

R.T.: 6.501 min
 Delta R.T.: 0.014 min
 Response: 158655
 Conc: 2.96 ng/ml



#26 AR-1254-1

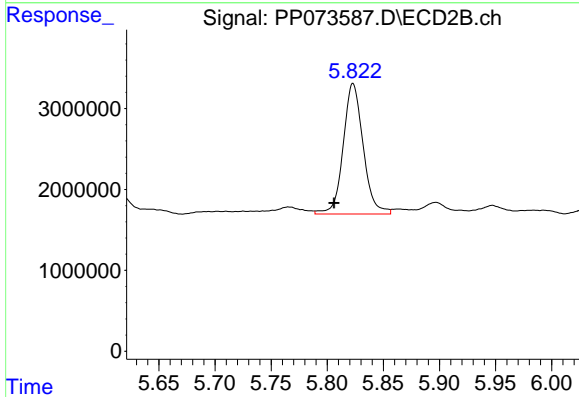
R.T.: 5.694 min
 Delta R.T.: 0.036 min
 Response: 333494
 Conc: 2.87 ng/ml



#27 AR-1254-2

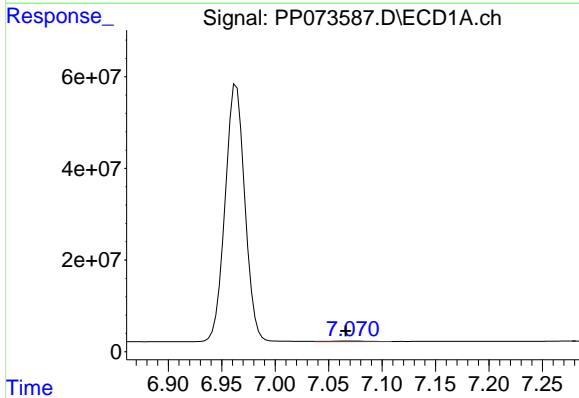
R.T.: 6.695 min
 Delta R.T.: -0.008 min
 Response: 11764646
 Conc: 141.25 ng/ml

Instrument :
 ECD_P
 ClientSampleId :
 DDT ANALOGUE



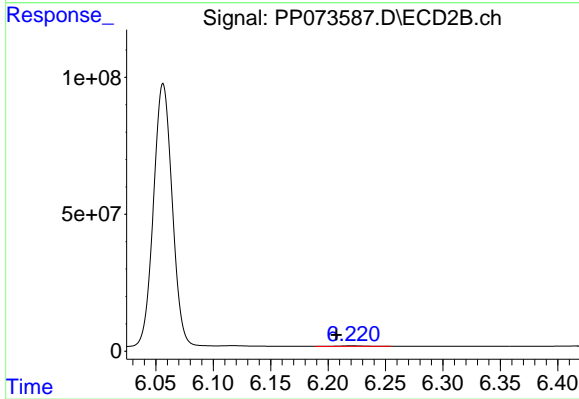
#27 AR-1254-2

R.T.: 5.823 min
 Delta R.T.: 0.017 min
 Response: 20002008
 Conc: 198.78 ng/ml



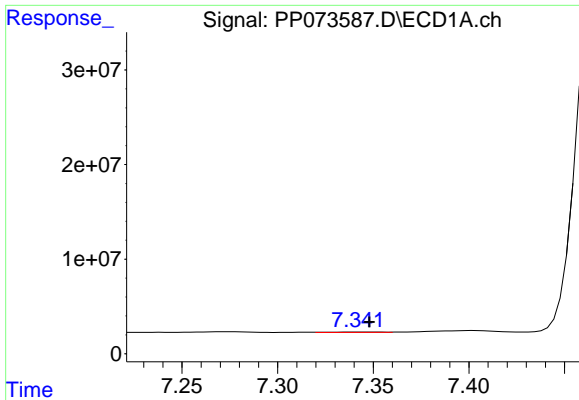
#28 AR-1254-3

R.T.: 7.071 min
 Delta R.T.: 0.005 min
 Response: 3450627
 Conc: 39.06 ng/ml



#28 AR-1254-3

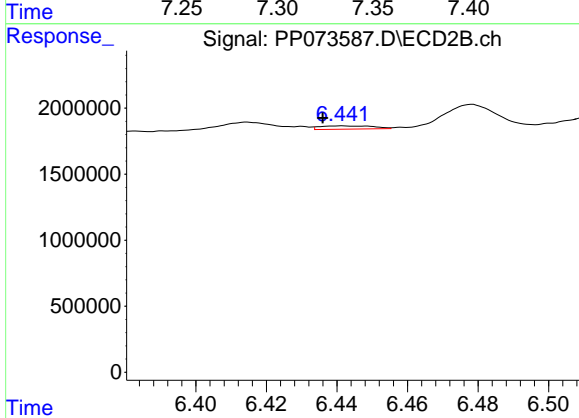
R.T.: 6.221 min
 Delta R.T.: 0.014 min
 Response: 3590877
 Conc: 23.25 ng/ml



#29 AR-1254-4

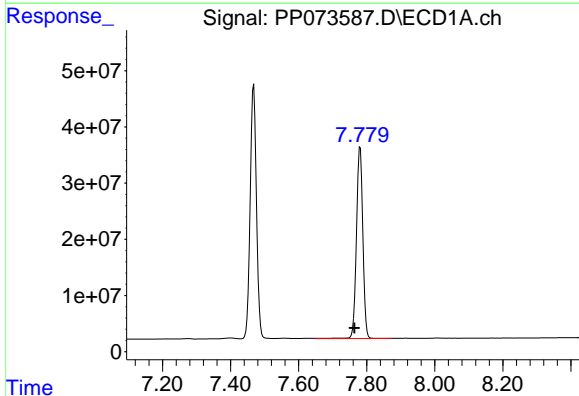
R.T.: 7.342 min
 Delta R.T.: -0.006 min
 Response: 774719
 Conc: 9.85 ng/ml

Instrument :
 ECD_P
 ClientSampleId :
 DDT ANALOGUE



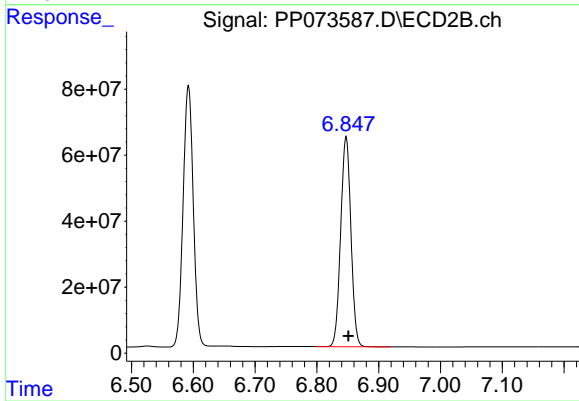
#29 AR-1254-4

R.T.: 6.441 min
 Delta R.T.: 0.005 min
 Response: 261557
 Conc: 2.77 ng/ml



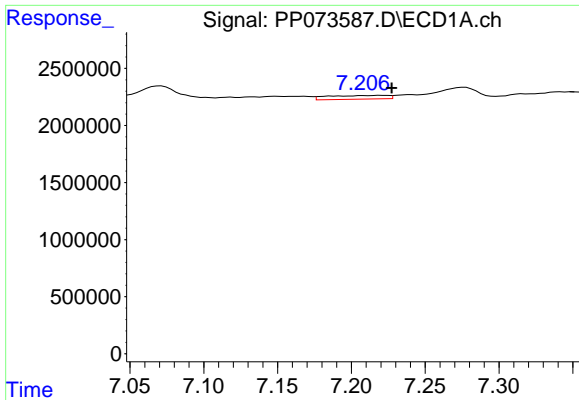
#30 AR-1254-5

R.T.: 7.781 min
 Delta R.T.: 0.017 min
 Response: 443450744
 Conc: 6018.62 ng/ml



#30 AR-1254-5

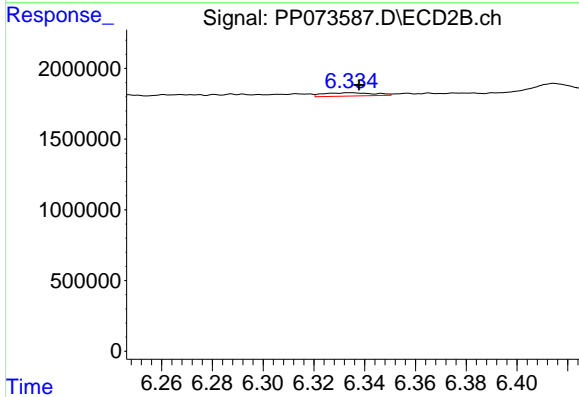
R.T.: 6.847 min
 Delta R.T.: -0.004 min
 Response: 733693518
 Conc: 5498.10 ng/ml



#31 AR-1260-1

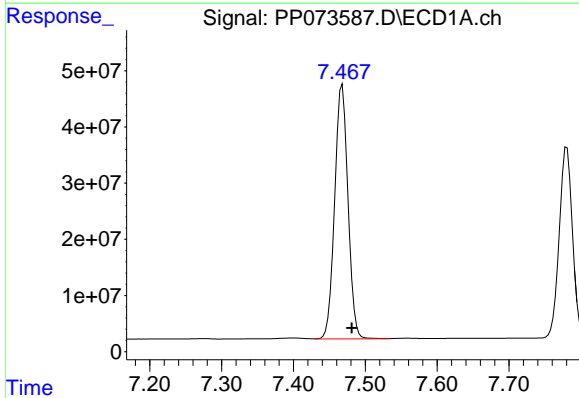
R.T.: 7.221 min
 Delta R.T.: -0.006 min
 Response: 925064
 Conc: 15.69 ng/ml

Instrument :
 ECD_P
 ClientSampleId :
 DDT ANALOGUE



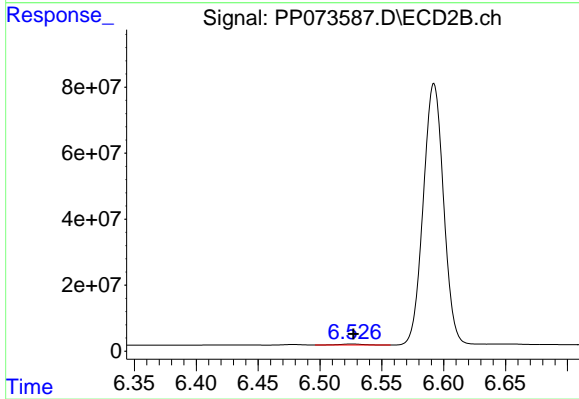
#31 AR-1260-1

R.T.: 6.334 min
 Delta R.T.: -0.003 min
 Response: 324959
 Conc: 3.33 ng/ml



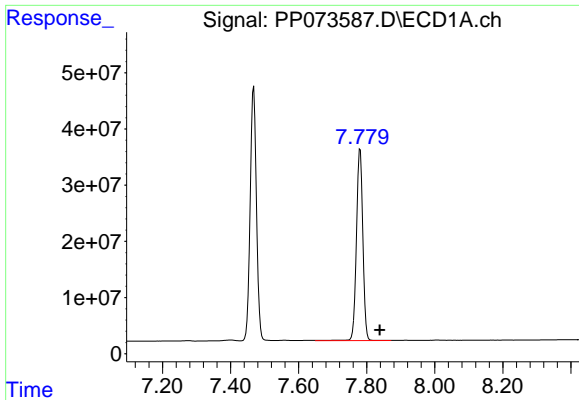
#32 AR-1260-2

R.T.: 7.468 min
 Delta R.T.: -0.013 min
 Response: 582381277
 Conc: 6076.61 ng/ml



#32 AR-1260-2

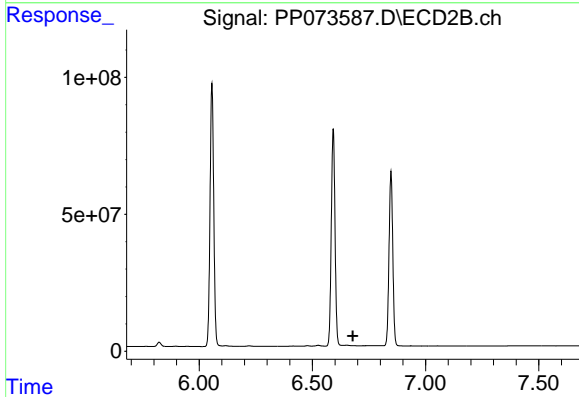
R.T.: 6.526 min
 Delta R.T.: -0.001 min
 Response: 4065520
 Conc: 33.10 ng/ml



#33 AR-1260-3

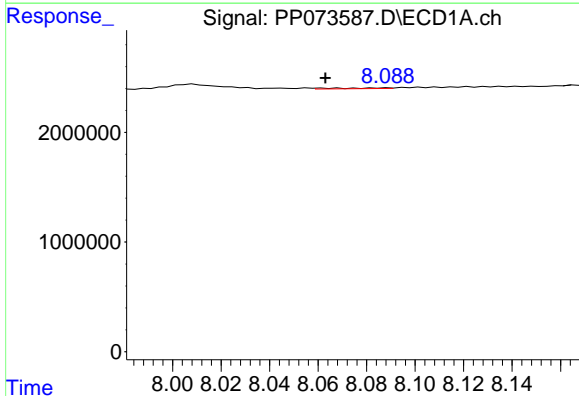
R.T.: 7.781 min
 Delta R.T.: -0.058 min
 Response: 443450744
 Conc: 6068.80 ng/m

Instrument :
 ECD_P
 ClientSampleId :
 DDT ANALOGUE



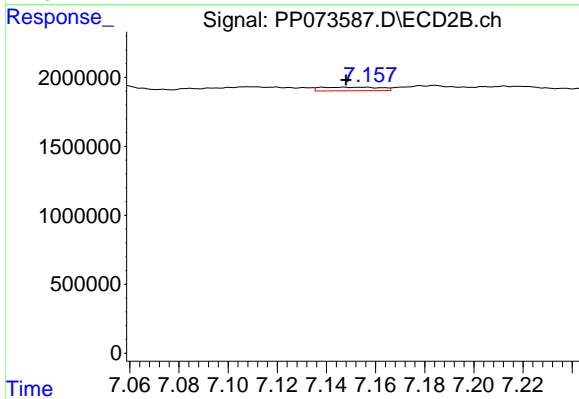
#33 AR-1260-3

R.T.: 6.652 min
 Delta R.T.: -0.027 min
 Response: -2266181
 Conc: N.D.



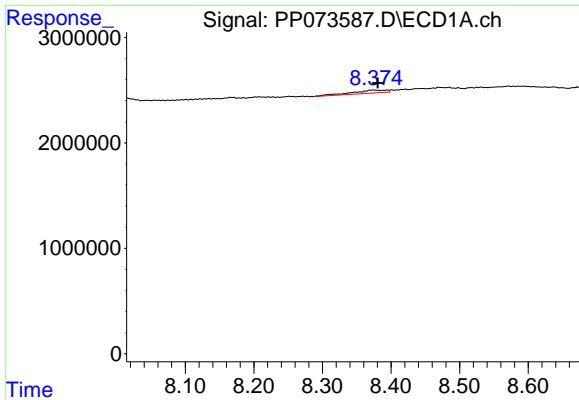
#34 AR-1260-4

R.T.: 8.069 min
 Delta R.T.: 0.006 min
 Response: 112077
 Conc: 1.72 ng/ml



#34 AR-1260-4

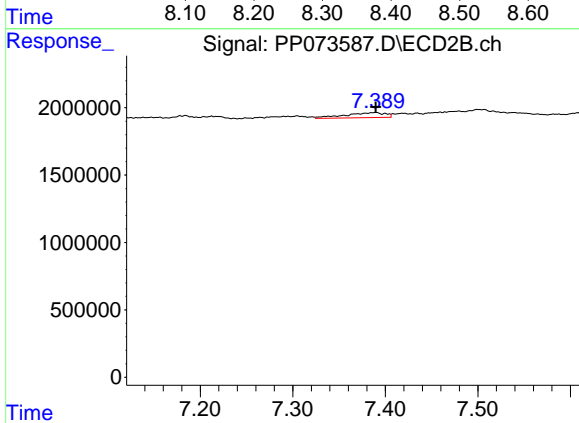
R.T.: 7.147 min
 Delta R.T.: -0.001 min
 Response: 433079
 Conc: 4.84 ng/ml



#35 AR-1260-5

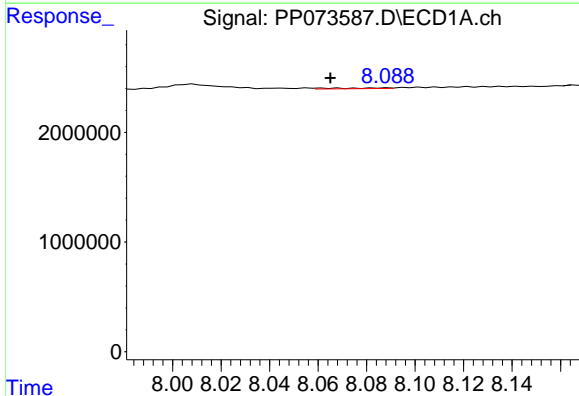
R.T.: 8.375 min
 Delta R.T.: -0.005 min
 Response: 1034975
 Conc: 6.86 ng/ml

Instrument :
 ECD_P
 ClientSampleId :
 DDT ANALOGUE



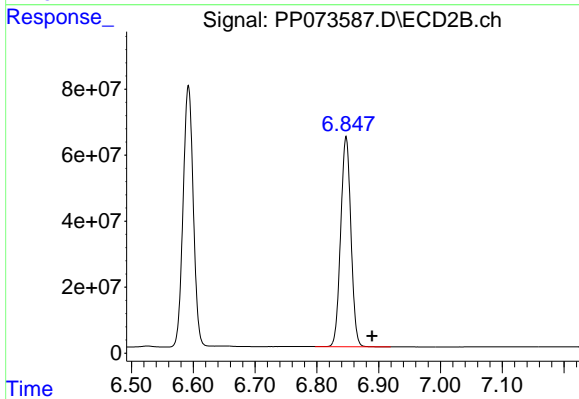
#35 AR-1260-5

R.T.: 7.390 min
 Delta R.T.: 0.000 min
 Response: 1122014
 Conc: 4.99 ng/ml



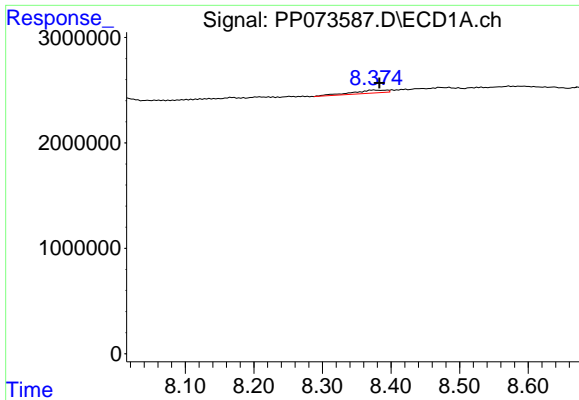
#36 AR-1262-1

R.T.: 8.069 min
 Delta R.T.: 0.004 min
 Response: 112077
 Conc: 1.29 ng/ml



#36 AR-1262-1

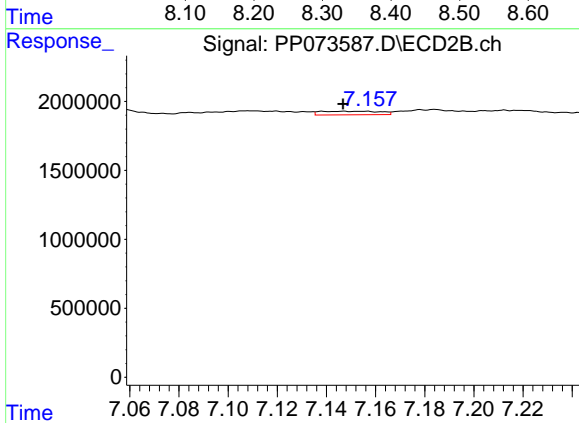
R.T.: 6.847 min
 Delta R.T.: -0.042 min
 Response: 733693518
 Conc: 4967.74 ng/ml



#37 AR-1262-2

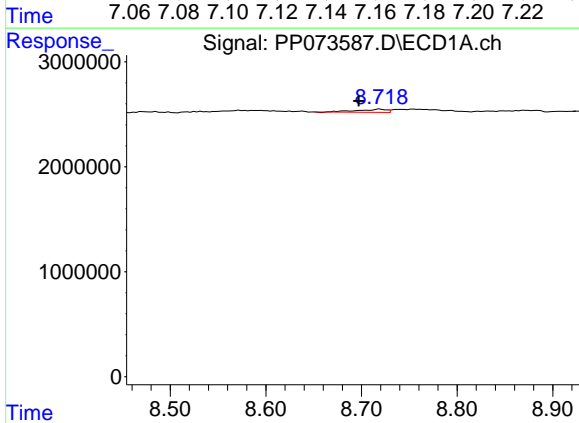
R.T.: 8.375 min
 Delta R.T.: -0.008 min
 Response: 1034975
 Conc: 5.23 ng/ml

Instrument :
 ECD_P
 ClientSampleId :
 DDT ANALOGUE



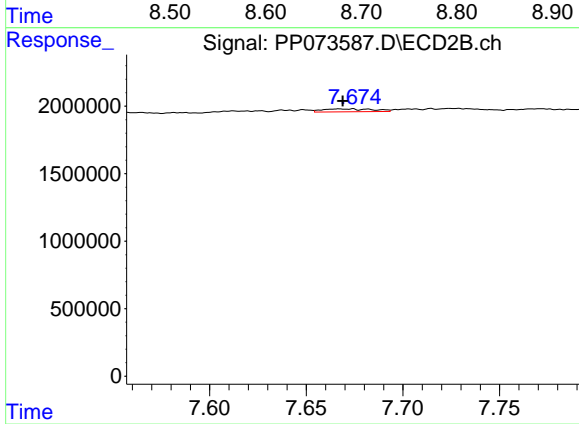
#37 AR-1262-2

R.T.: 7.147 min
 Delta R.T.: 0.000 min
 Response: 433079
 Conc: 3.39 ng/ml



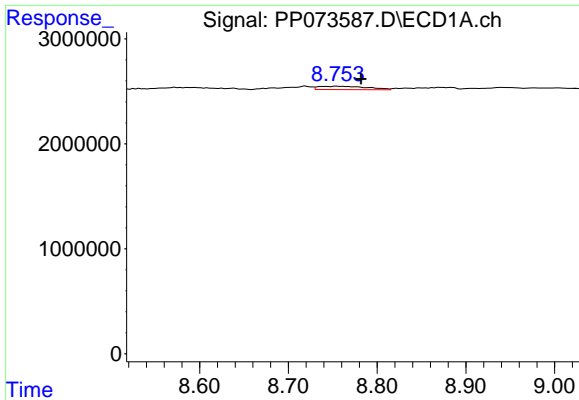
#38 AR-1262-3

R.T.: 8.720 min
 Delta R.T.: 0.022 min
 Response: 599976
 Conc: 4.77 ng/ml



#38 AR-1262-3

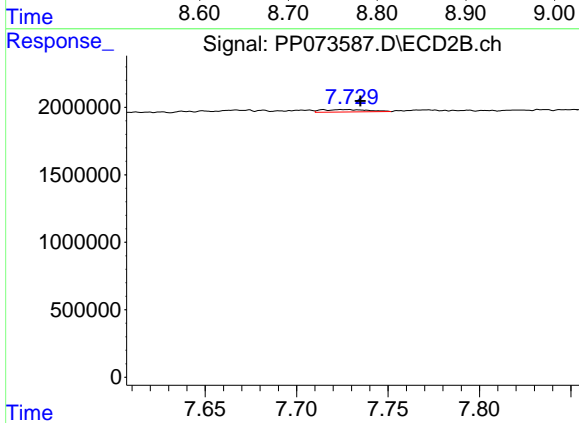
R.T.: 7.674 min
 Delta R.T.: 0.005 min
 Response: 395392
 Conc: 3.47 ng/ml



#39 AR-1262-4

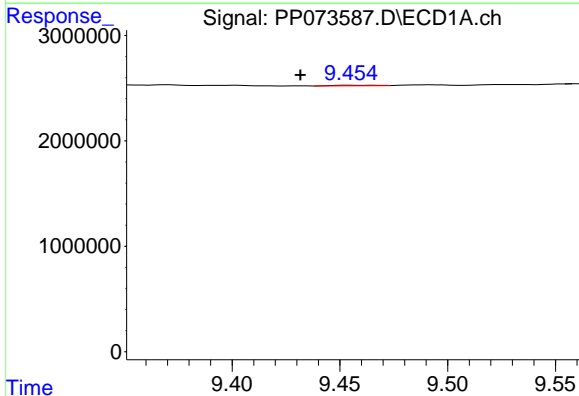
R.T.: 8.755 min
 Delta R.T.: -0.027 min
 Response: 1223377
 Conc: 13.12 ng/ml

Instrument :
 ECD_P
 ClientSampleId :
 DDT ANALOGUE



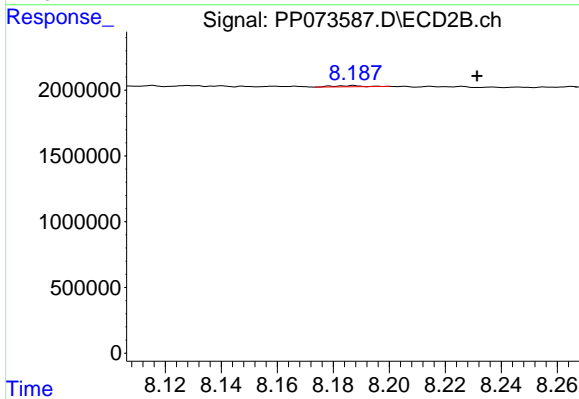
#39 AR-1262-4

R.T.: 7.715 min
 Delta R.T.: -0.020 min
 Response: 316925
 Conc: 1.72 ng/ml



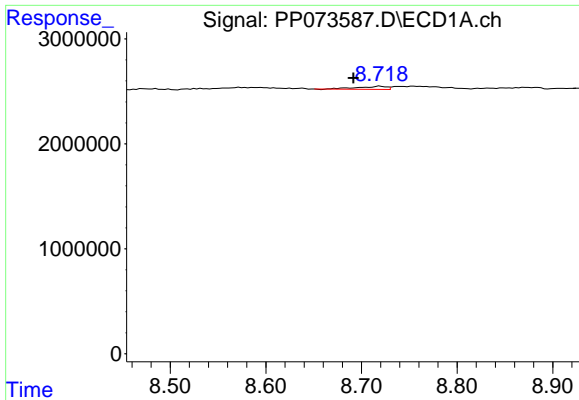
#40 AR-1262-5

R.T.: 9.455 min
 Delta R.T.: 0.024 min
 Response: 77739
 Conc: 1.23 ng/ml



#40 AR-1262-5

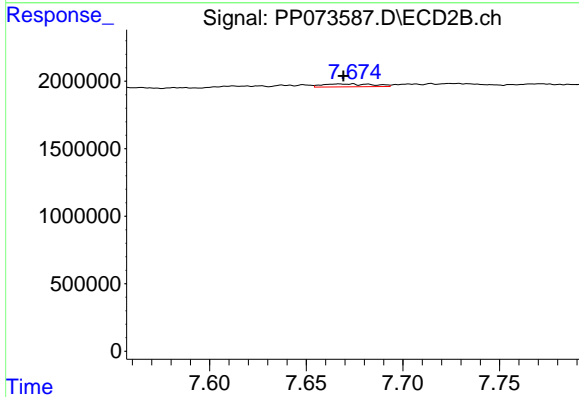
R.T.: 8.187 min
 Delta R.T.: -0.044 min
 Response: 75032
 Conc: 0.89 ng/ml



#41 AR-1268-1

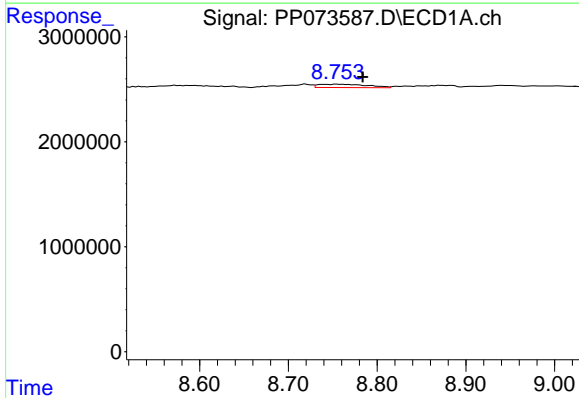
R.T.: 8.720 min
 Delta R.T.: 0.028 min
 Response: 599976
 Conc: 2.69 ng/ml

Instrument :
 ECD_P
 ClientSampleId :
 DDT ANALOGUE



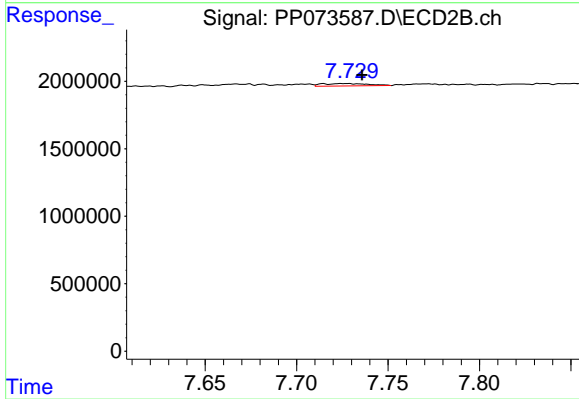
#41 AR-1268-1

R.T.: 7.674 min
 Delta R.T.: 0.005 min
 Response: 395392
 Conc: 1.29 ng/ml



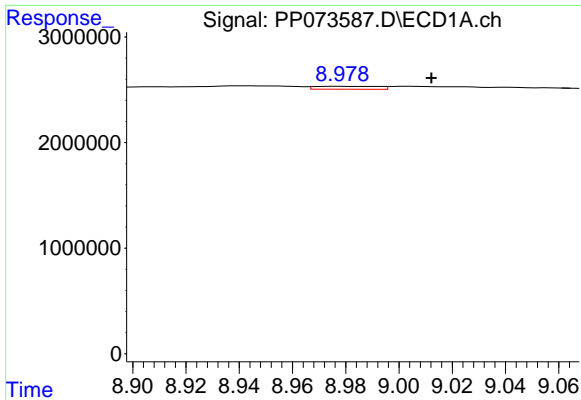
#42 AR-1268-2

R.T.: 8.755 min
 Delta R.T.: -0.029 min
 Response: 1223377
 Conc: 6.42 ng/ml



#42 AR-1268-2

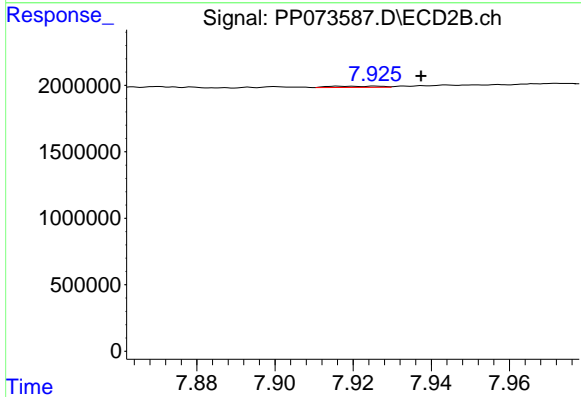
R.T.: 7.715 min
 Delta R.T.: -0.021 min
 Response: 316925
 Conc: 1.19 ng/ml



#43 AR-1268-3

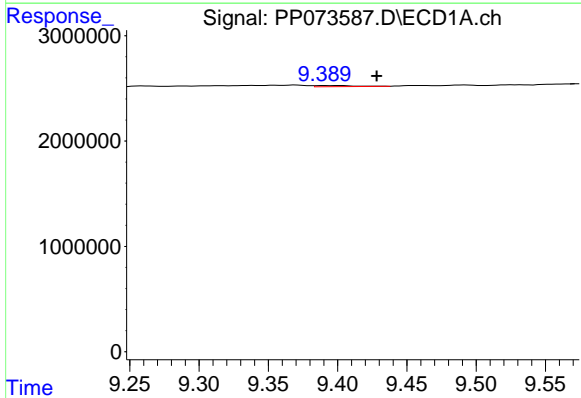
R.T.: 8.979 min
 Delta R.T.: -0.034 min
 Response: 452576
 Conc: 2.73 ng/ml

Instrument :
 ECD_P
 ClientSampleId :
 DDT ANALOGUE



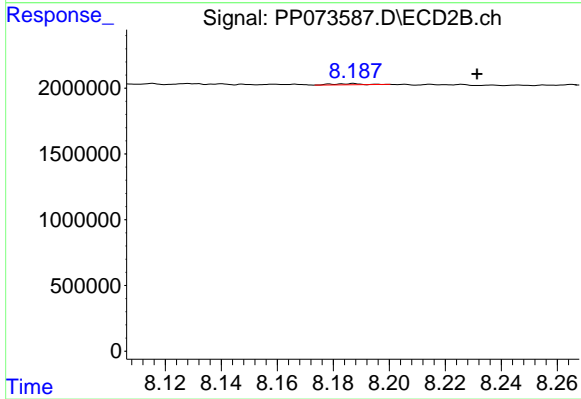
#43 AR-1268-3

R.T.: 7.916 min
 Delta R.T.: -0.021 min
 Response: 86892
 Conc: 0.39 ng/ml



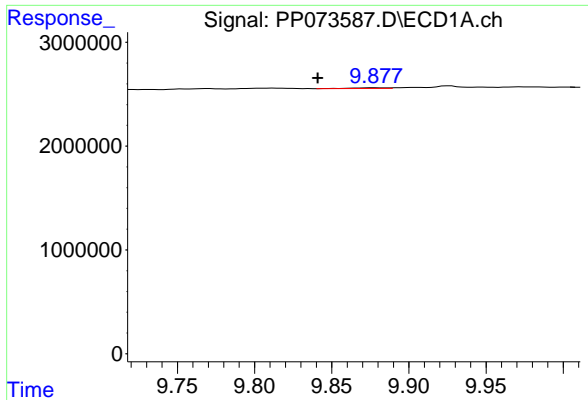
#44 AR-1268-4

R.T.: 9.401 min
 Delta R.T.: -0.027 min
 Response: 189948
 Conc: 2.73 ng/ml



#44 AR-1268-4

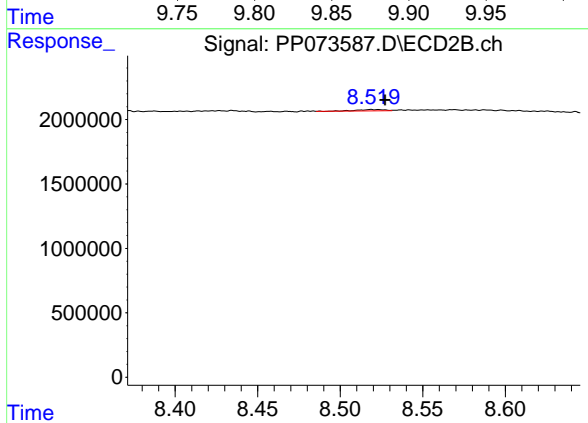
R.T.: 8.187 min
 Delta R.T.: -0.044 min
 Response: 75032
 Conc: 0.81 ng/ml



#45 AR-1268-5

R.T.: 9.879 min
 Delta R.T.: 0.038 min
 Response: 110921
 Conc: 0.24 ng/ml

Instrument :
 ECD_P
 ClientSampleId :
 DDT ANALOGUE



#45 AR-1268-5

R.T.: 8.519 min
 Delta R.T.: -0.008 min
 Response: 116778
 Conc: 0.19 ng/ml