

Data Path : Z:\pestpcbsrv\HPCHEM1\ECD_P\Data\PP070825\
 Data File : PP073575.D
 Signal(s) : Signal #1: ECD1A.ch Signal #2: ECD2B.ch
 Acq On : 08 Jul 2025 02:46
 Operator : YP\AJ
 Sample : AR1254ICC050
 Misc :
 ALS Vial : 24 Sample Multiplier: 1

Instrument :
 ECD_P
ClientSampleId :
 AR1254ICC050

Manual Integrations
APPROVED
 Reviewed By :Yogesh Patel 07/08/2025
 Supervised By :mohammad ahmed 07/09/2025

Integration File signal 1: autoint1.e
 Integration File signal 2: autoint2.e
 Quant Time: Jul 08 03:42:13 2025
 Quant Method : Z:\pestpcbsrv\HPCHEM1\ECD_P\methods\PP070825.M
 Quant Title : GC EXTRACTABLES
 QLast Update : Tue Jul 08 02:41:54 2025
 Response via : Initial Calibration
 Integrator: ChemStation

Volume Inj. : 2 µl
 Signal #1 Phase : ZB-MR1 Signal #2 Phase: ZB-MR2
 Signal #1 Info : 30Mx0.32mmx 0.50µ Signal #2 Info : 30M x 0.32mm x 0.25µm

Compound	RT#1	RT#2	Resp#1	Resp#2	ng/ml	ng/ml

System Monitoring Compounds						
1) SA Tetrachlo...	4.488	3.779	6938090	9721913	4.952	5.138
2) SA Decachlor...	10.178	8.780	5667149	6887289	4.948	5.019
Target Compounds						
26) L6 AR-1254-1	6.485	5.657	2578085	6452648	46.697m	57.447
27) L6 AR-1254-2	6.701	5.806	4490008	5754555	54.399m	59.894
28) L6 AR-1254-3	7.064	6.207	4570279	8163980	51.646m	53.675
29) L6 AR-1254-4	7.347	6.436	4061359	4857854	51.027m	51.487
30) L6 AR-1254-5	7.764	6.851	3548489	7039930	47.554	53.848

(f)=RT Delta > 1/2 Window (#)=Amounts differ by > 25% (m)=manual int.

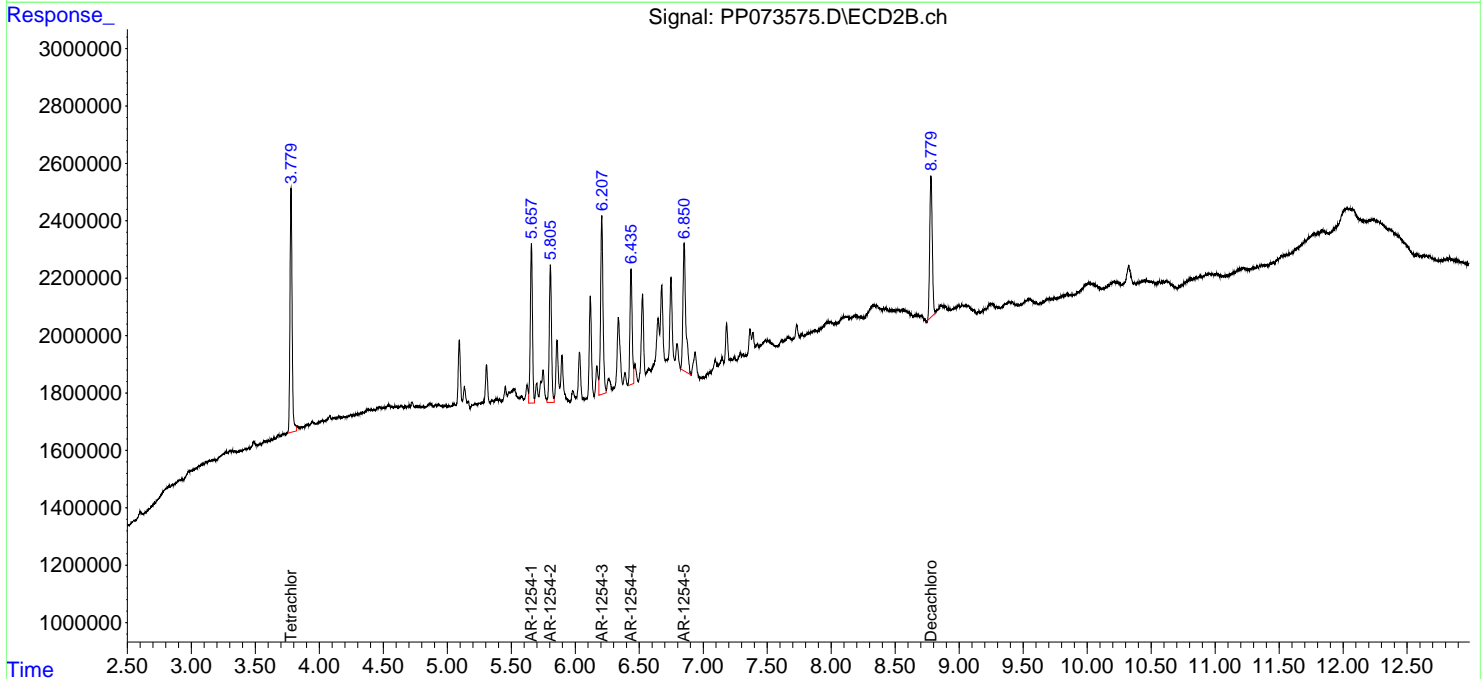
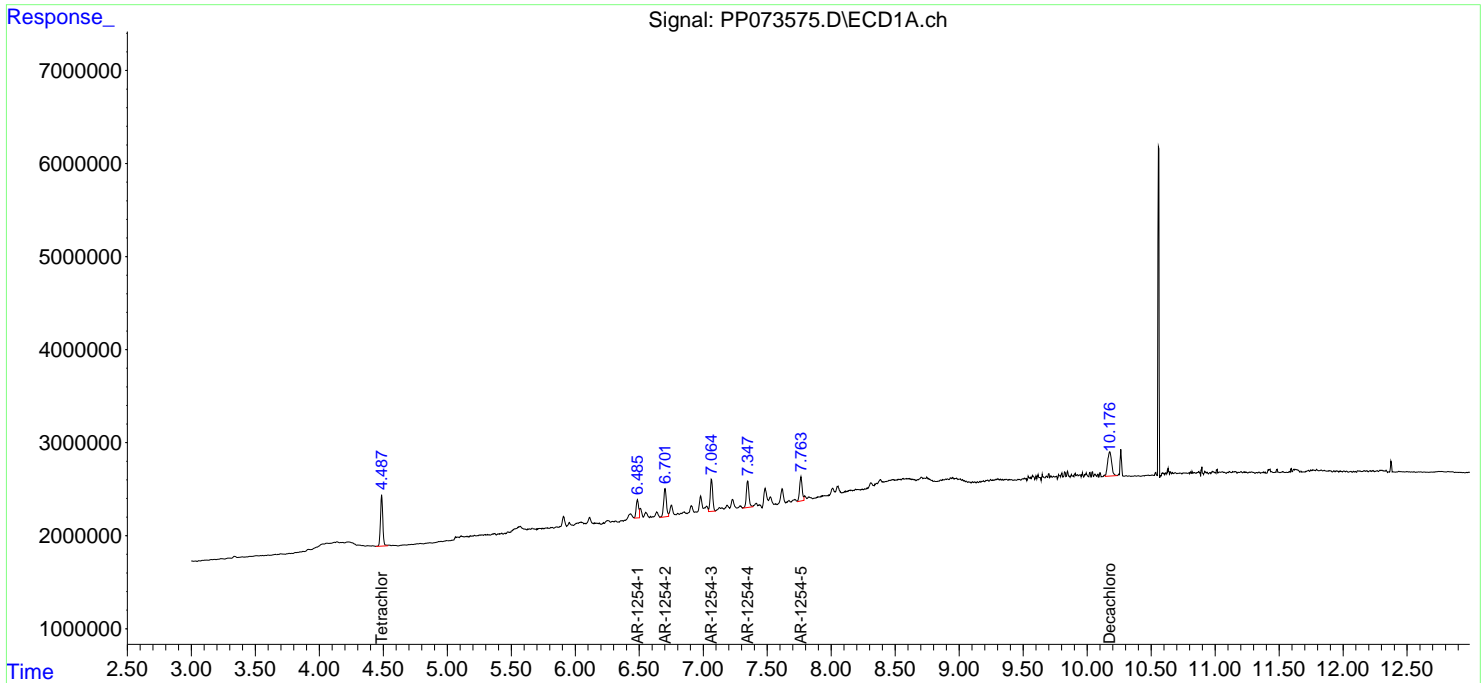
Data Path : Z:\pestpcbsrv\HPCHEM1\ECD_P\Data\PP070825\
 Data File : PP073575.D
 Signal(s) : Signal #1: ECD1A.ch Signal #2: ECD2B.ch
 Acq On : 08 Jul 2025 02:46
 Operator : YP\AJ
 Sample : AR1254IC050
 Misc :
 ALS Vial : 24 Sample Multiplier: 1

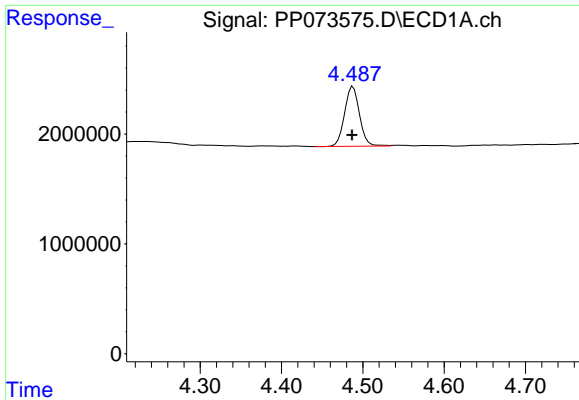
Instrument :
 ECD_P
ClientSampleId :
 AR1254IC050

Manual Integrations
APPROVED
 Reviewed By :Yogesh Patel 07/08/2025
 Supervised By :mohammad ahmed 07/09/2025

Integration File signal 1: autoint1.e
 Integration File signal 2: autoint2.e
 Quant Time: Jul 08 03:42:13 2025
 Quant Method : Z:\pestpcbsrv\HPCHEM1\ECD_P\methods\PP070825.M
 Quant Title : GC EXTRACTABLES
 QLast Update : Tue Jul 08 02:41:54 2025
 Response via : Initial Calibration
 Integrator: ChemStation

Volume Inj. : 2 µl
 Signal #1 Phase : ZB-MR1 Signal #2 Phase: ZB-MR2
 Signal #1 Info : 30Mx0.32mmx 0.50µ Signal #2 Info : 30M x 0.32mm x 0.25µm



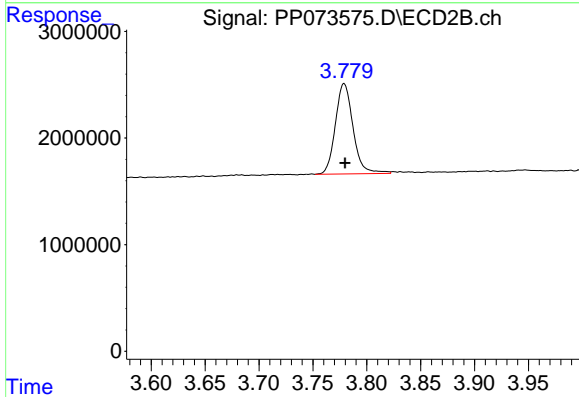


#1 Tetrachloro-m-xylene
 R.T.: 4.488 min
 Delta R.T.: 0.001 min
 Response: 6938090
 Conc: 4.95 ng/ml

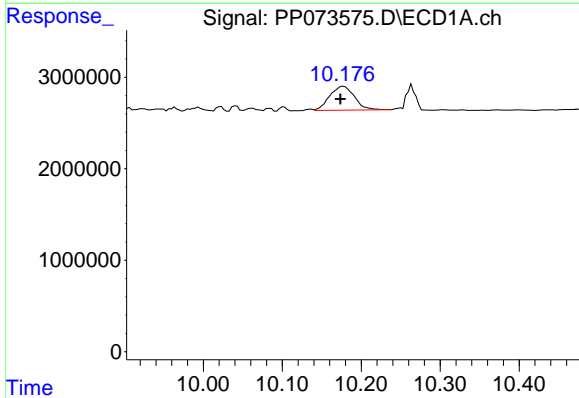
Instrument : ECD_P
 ClientSampleId : AR1254IC050

Manual Integrations
APPROVED

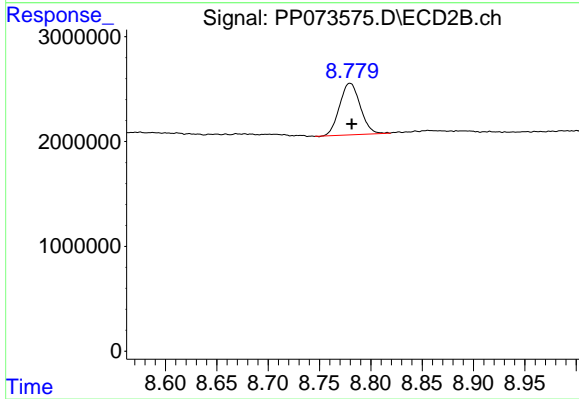
Reviewed By :Yogesh Patel 07/08/2025
 Supervised By :mohammad ahmed 07/09/2025



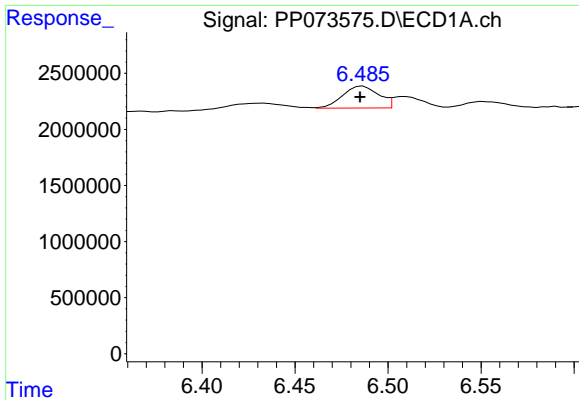
#1 Tetrachloro-m-xylene
 R.T.: 3.779 min
 Delta R.T.: 0.000 min
 Response: 9721913
 Conc: 5.14 ng/ml



#2 Decachlorobiphenyl
 R.T.: 10.178 min
 Delta R.T.: 0.004 min
 Response: 5667149
 Conc: 4.95 ng/ml



#2 Decachlorobiphenyl
 R.T.: 8.780 min
 Delta R.T.: -0.002 min
 Response: 6887289
 Conc: 5.02 ng/ml



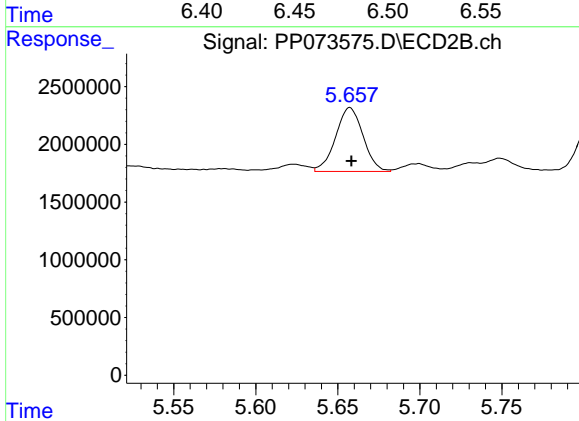
#26 AR-1254-1

R.T.: 6.485 min
 Delta R.T.: 0.000 min
 Response: 2578085
 Conc: 46.70 ng/ml

Instrument : ECD_P
 ClientSampleId : AR1254IC050

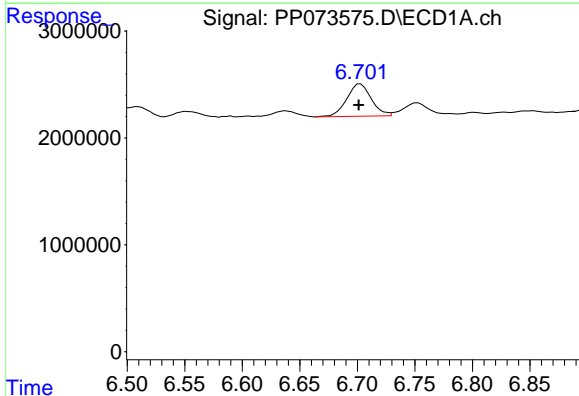
Manual Integrations
 APPROVED

Reviewed By :Yogesh Patel 07/08/2025
 Supervised By :mohammad ahmed 07/09/2025



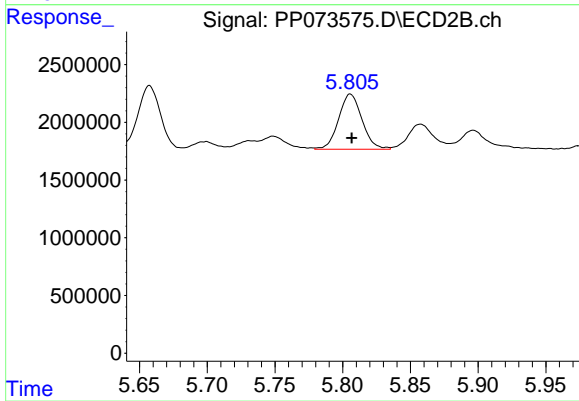
#26 AR-1254-1

R.T.: 5.657 min
 Delta R.T.: 0.000 min
 Response: 6452648
 Conc: 57.45 ng/ml



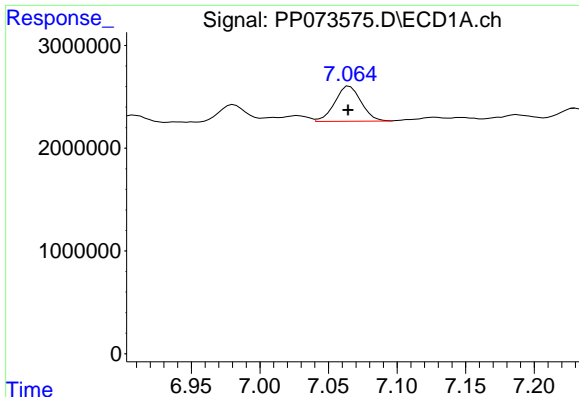
#27 AR-1254-2

R.T.: 6.701 min
 Delta R.T.: 0.000 min
 Response: 4490008
 Conc: 54.40 ng/ml m



#27 AR-1254-2

R.T.: 5.806 min
 Delta R.T.: 0.000 min
 Response: 5754555
 Conc: 59.89 ng/ml



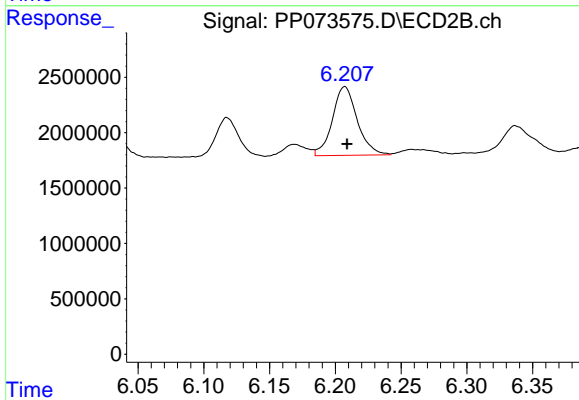
#28 AR-1254-3

R.T.: 7.064 min
 Delta R.T.: 0.000 min
 Response: 4570279
 Conc: 51.65 ng/ml

Instrument :
 ECD_P
 ClientSampleId :
 AR1254ICC050

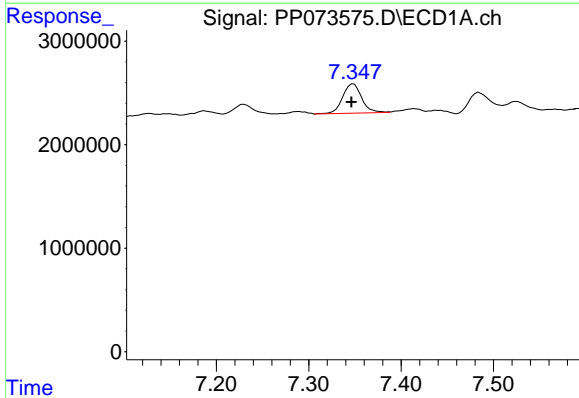
Manual Integrations
 APPROVED

Reviewed By :Yogesh Patel 07/08/2025
 Supervised By :mohammad ahmed 07/09/2025



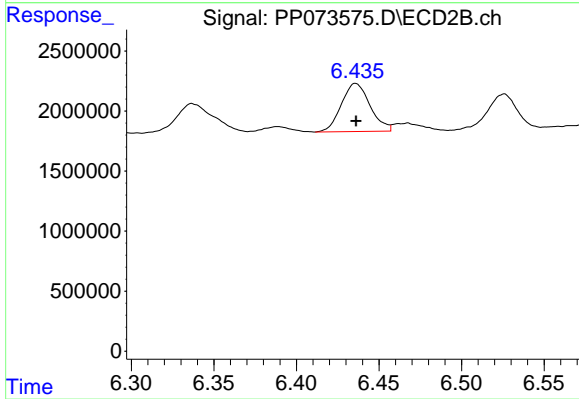
#28 AR-1254-3

R.T.: 6.207 min
 Delta R.T.: -0.002 min
 Response: 8163980
 Conc: 53.68 ng/ml



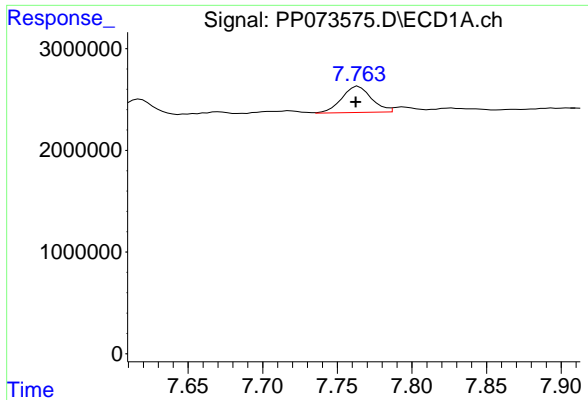
#29 AR-1254-4

R.T.: 7.347 min
 Delta R.T.: 0.001 min
 Response: 4061359
 Conc: 51.03 ng/ml m



#29 AR-1254-4

R.T.: 6.436 min
 Delta R.T.: 0.000 min
 Response: 4857854
 Conc: 51.49 ng/ml



#30 AR-1254-5

R.T.: 7.764 min
Delta R.T.: 0.002 min
Response: 3548489
Conc: 47.55 ng/ml

Instrument :

ECD_P

ClientSampleId :

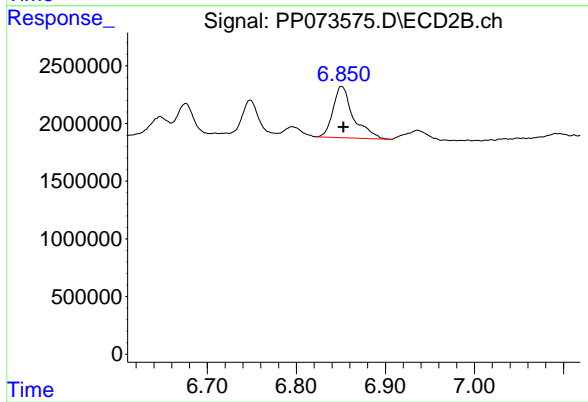
AR1254ICC050

Manual Integrations

APPROVED

Reviewed By :Yogesh Patel 07/08/2025

Supervised By :mohammad ahmed 07/09/2025



#30 AR-1254-5

R.T.: 6.851 min
Delta R.T.: -0.002 min
Response: 7039930
Conc: 53.85 ng/ml