

Data Path : Z:\pestpcbsrv\HPCHEM1\ECD_P\Data\PP070825\
 Data File : PP073584.D
 Signal(s) : Signal #1: ECD1A.ch Signal #2: ECD2B.ch
 Acq On : 08 Jul 2025 05:46
 Operator : YP\AJ
 Sample : AR1248ICV500
 Misc :
 ALS Vial : 33 Sample Multiplier: 1

Instrument :
 ECD_P
ClientSampleId :
 ICVPP070825AR1248

Integration File signal 1: autoint1.e
 Integration File signal 2: autoint2.e
 Quant Time: Jul 08 06:11:45 2025
 Quant Method : Z:\pestpcbsrv\HPCHEM1\ECD_P\methods\PP070825.M
 Quant Title : GC EXTRACTABLES
 QLast Update : Tue Jul 08 06:01:49 2025
 Response via : Initial Calibration
 Integrator: ChemStation

Volume Inj. : 2 µl
 Signal #1 Phase : ZB-MR1 Signal #2 Phase: ZB-MR2
 Signal #1 Info : 30Mx0.32mmx 0.50µ Signal #2 Info : 30M x 0.32mm x 0.25µm

| Compound | RT#1 | RT#2 | Resp#1 | Resp#2 | ng/ml | ng/ml |
|-----------------------------|--------|-------|----------|----------|---------|---------|
| ----- | | | | | | |
| System Monitoring Compounds | | | | | | |
| 1) SA Tetrachlo... | 4.489 | 3.778 | 71424974 | 97266201 | 52.153 | 52.796 |
| 2) SA Decachlor... | 10.176 | 8.779 | 58027297 | 74824812 | 53.185 | 56.551 |
| Target Compounds | | | | | | |
| 21) L5 AR-1248-1 | 5.639 | 4.857 | 15762091 | 23607850 | 510.587 | 525.847 |
| 22) L5 AR-1248-2 | 5.910 | 5.092 | 20492312 | 31849894 | 513.291 | 517.577 |
| 23) L5 AR-1248-3 | 6.112 | 5.134 | 23677594 | 33328191 | 533.164 | 520.228 |
| 24) L5 AR-1248-4 | 6.511 | 5.306 | 28997723 | 39129254 | 526.461 | 519.111 |
| 25) L5 AR-1248-5 | 6.550 | 5.697 | 28371365 | 39383540 | 527.441 | 527.994 |
| ----- | | | | | | |

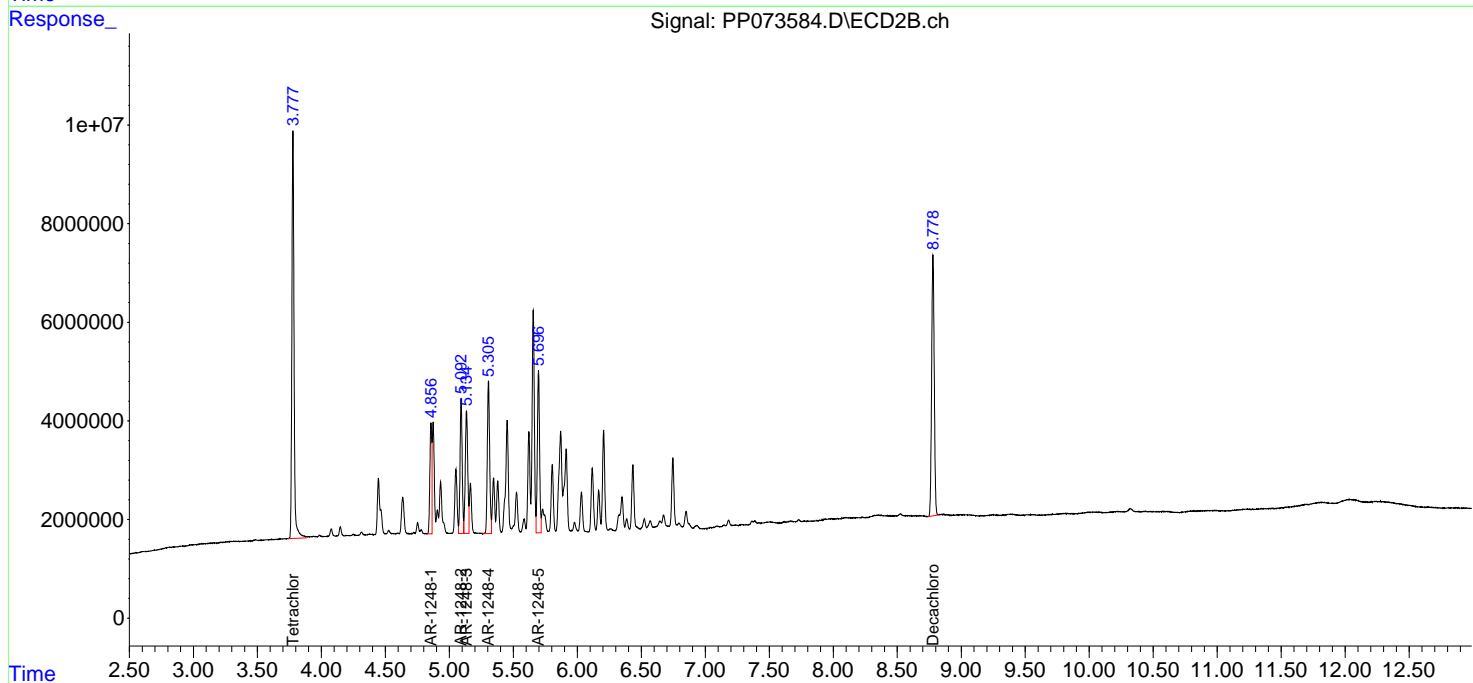
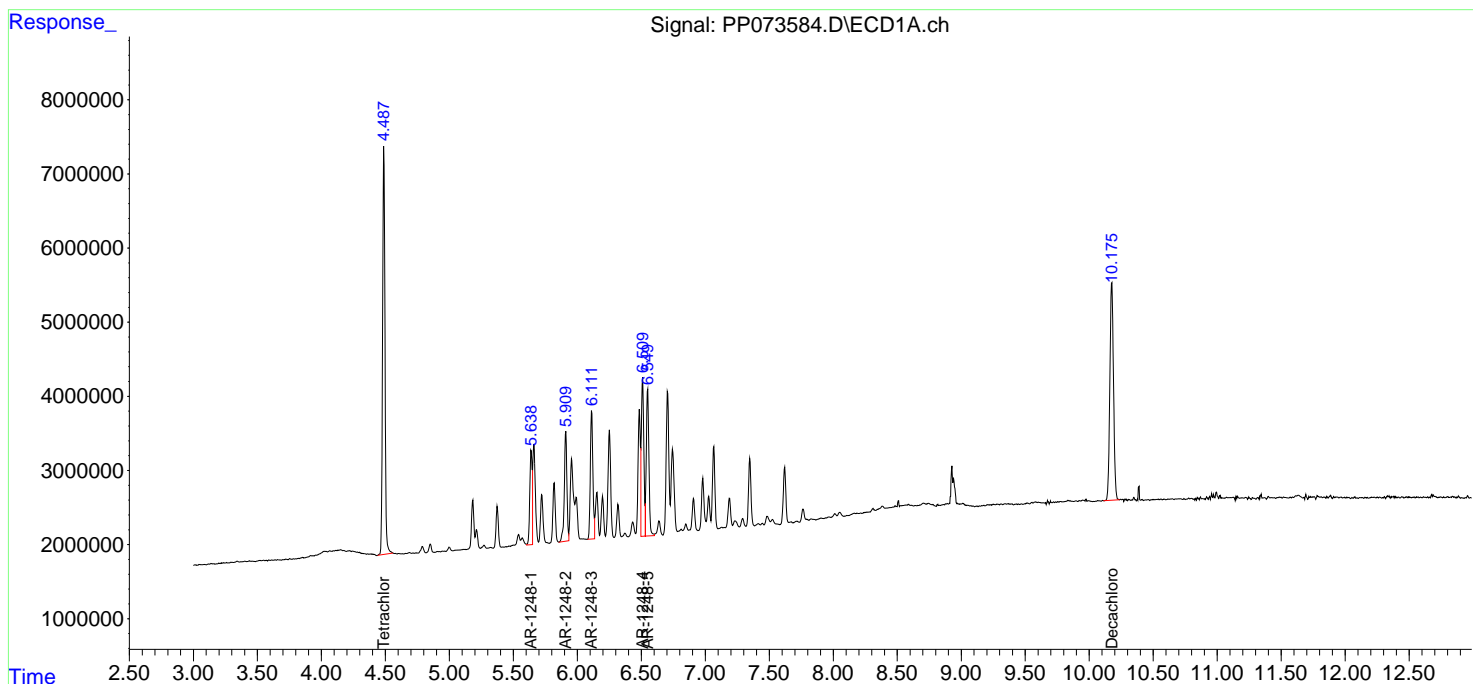
(f)=RT Delta > 1/2 Window (#)=Amounts differ by > 25% (m)=manual int.

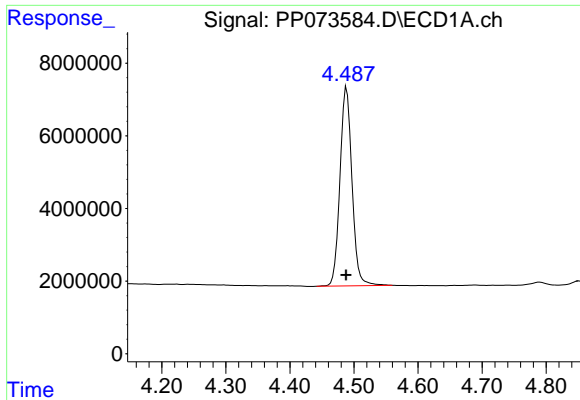
Data Path : Z:\pestpcbsrv\HPCHEM1\ECD_P\Data\PP070825\
Data File : PP073584.D
Signal(s) : Signal #1: ECD1A.ch Signal #2: ECD2B.ch
Acq On : 08 Jul 2025 05:46
Operator : YP\AJ
Sample : AR1248ICV500
Misc :
ALS Vial : 33 Sample Multiplier: 1

Instrument :
ECD_P
ClientSampleId :
ICVPP070825AR1248

Integration File signal 1: autoint1.e
Integration File signal 2: autoint2.e
Quant Time: Jul 08 06:11:45 2025
Quant Method : Z:\pestpcbsrv\HPCHEM1\ECD_P\methods\PP070825.M
Quant Title : GC EXTRACTABLES
QLast Update : Tue Jul 08 06:01:49 2025
Response via : Initial Calibration
Integrator: ChemStation

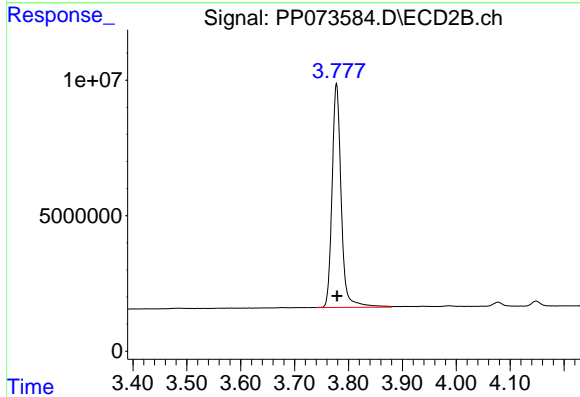
Volume Inj. : 2 µl
Signal #1 Phase : ZB-MR1 Signal #2 Phase: ZB-MR2
Signal #1 Info : 30Mx0.32mmx 0.50µ Signal #2 Info : 30M x 0.32mm x 0.25µm



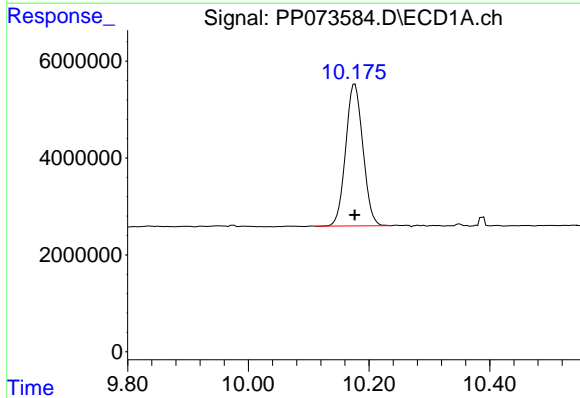


#1 Tetrachloro-m-xylene
 R.T.: 4.489 min
 Delta R.T.: 0.000 min
 Response: 71424974
 Conc: 52.15 ng/ml

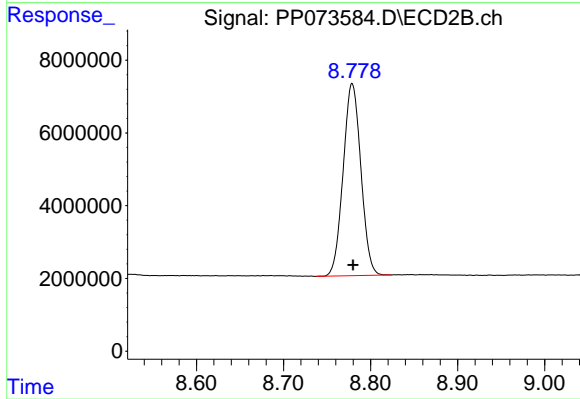
Instrument :
 ECD_P
 ClientSampleId :
 ICVPP070825AR1248



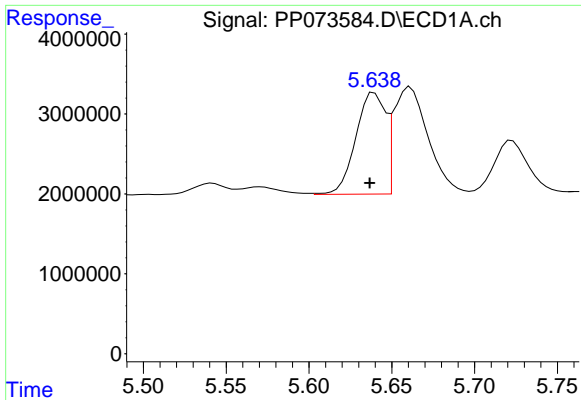
#1 Tetrachloro-m-xylene
 R.T.: 3.778 min
 Delta R.T.: 0.000 min
 Response: 97266201
 Conc: 52.80 ng/ml



#2 Decachlorobiphenyl
 R.T.: 10.176 min
 Delta R.T.: 0.000 min
 Response: 58027297
 Conc: 53.18 ng/ml



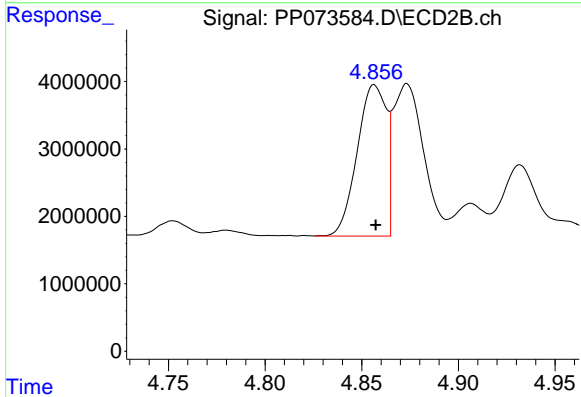
#2 Decachlorobiphenyl
 R.T.: 8.779 min
 Delta R.T.: -0.001 min
 Response: 74824812
 Conc: 56.55 ng/ml



#21 AR-1248-1

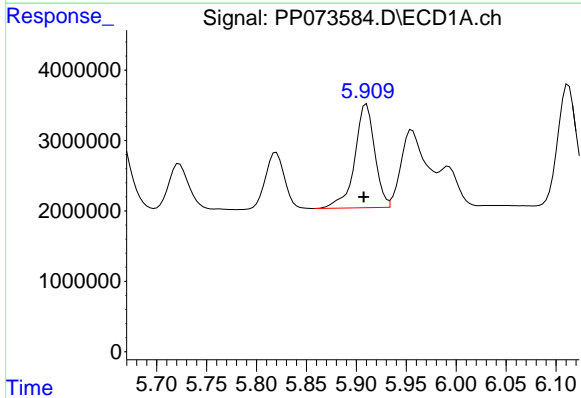
R.T.: 5.639 min
 Delta R.T.: 0.003 min
 Response: 15762091
 Conc: 510.59 ng/ml

Instrument :
 ECD_P
 ClientSampleId :
 ICVPP070825AR1248



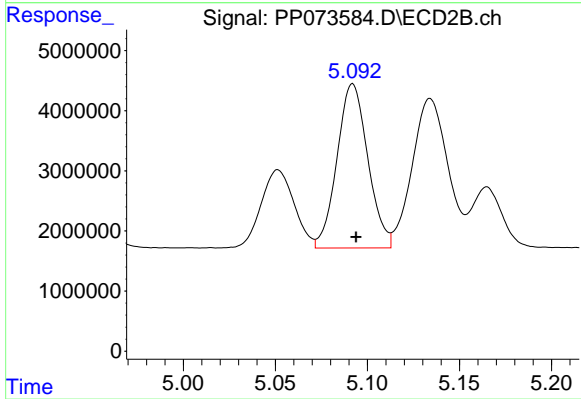
#21 AR-1248-1

R.T.: 4.857 min
 Delta R.T.: 0.000 min
 Response: 23607850
 Conc: 525.85 ng/ml



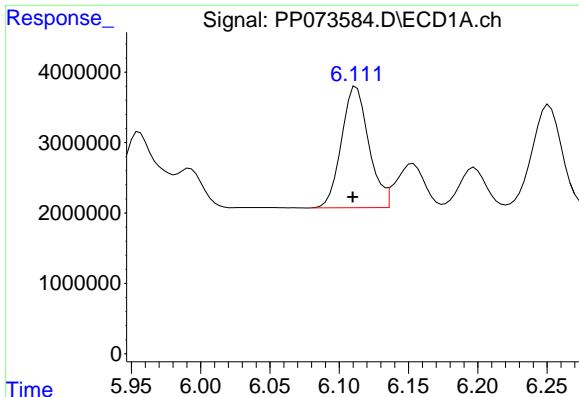
#22 AR-1248-2

R.T.: 5.910 min
 Delta R.T.: 0.003 min
 Response: 20492312
 Conc: 513.29 ng/ml



#22 AR-1248-2

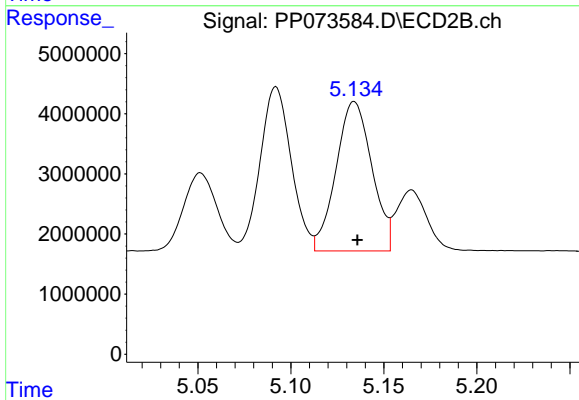
R.T.: 5.092 min
 Delta R.T.: -0.002 min
 Response: 31849894
 Conc: 517.58 ng/ml



#23 AR-1248-3

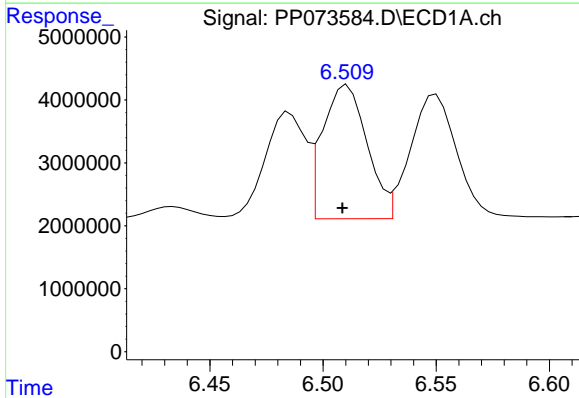
R.T.: 6.112 min
 Delta R.T.: 0.003 min
 Response: 23677594
 Conc: 533.16 ng/ml

Instrument :
 ECD_P
 ClientSampleId :
 ICVPP070825AR1248



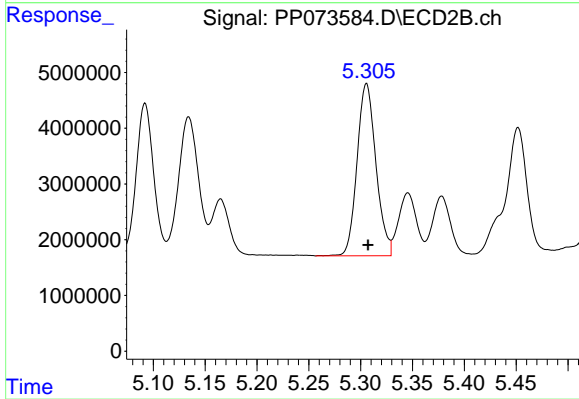
#23 AR-1248-3

R.T.: 5.134 min
 Delta R.T.: -0.002 min
 Response: 33328191
 Conc: 520.23 ng/ml



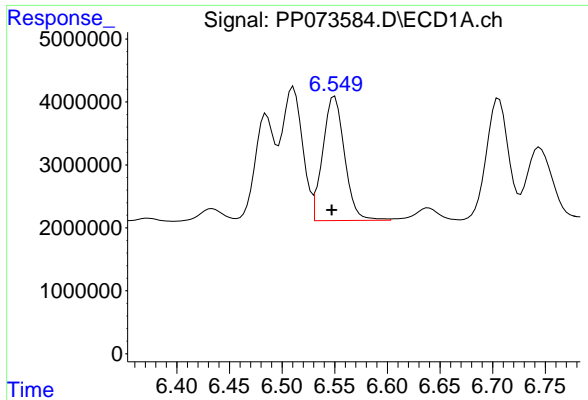
#24 AR-1248-4

R.T.: 6.511 min
 Delta R.T.: 0.002 min
 Response: 28997723
 Conc: 526.46 ng/ml



#24 AR-1248-4

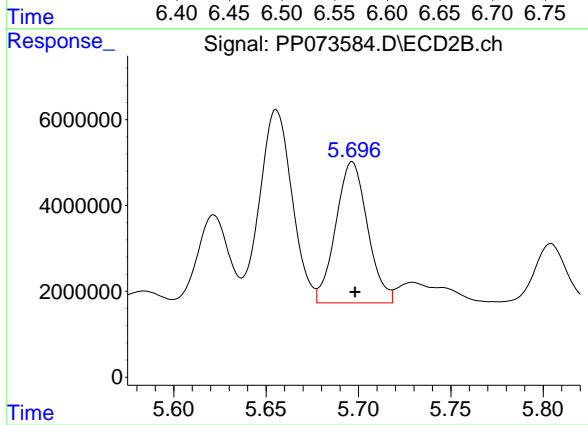
R.T.: 5.306 min
 Delta R.T.: -0.002 min
 Response: 39129254
 Conc: 519.11 ng/ml



#25 AR-1248-5

R.T.: 6.550 min
Delta R.T.: 0.003 min
Response: 28371365
Conc: 527.44 ng/ml

Instrument :
ECD_P
ClientSampleId :
ICVPP070825AR1248



#25 AR-1248-5

R.T.: 5.697 min
Delta R.T.: -0.002 min
Response: 39383540
Conc: 527.99 ng/ml