

Data Path : Z:\pestpcbsrv\HPCHEM1\ECD_P\Data\PP070921\
 Data File : PP037156.D
 Signal(s) : Signal #1: ECD1A.CH Signal #2: ECD2B.CH
 Acq On : 09 Jul 2021 10:24
 Operator : DD\AJ
 Sample : AR1248CCC500
 Misc :
 ALS Vial : 5 Sample Multiplier: 1

Instrument :
 ECD_P
 ClientSampleId :
 AR1248CCC500

Integration File signal 1: autoint1.e
 Integration File signal 2: autoint2.e
 Quant Time: Jul 09 15:21:00 2021
 Quant Method : Z:\pestpcbsrv\HPCHEM1\ECD_P\methods\PP070621.M
 Quant Title : GC EXTRACTABLES
 QLast Update : Wed Jul 07 08:32:32 2021
 Response via : Initial Calibration
 Integrator: ChemStation 6890 Scale Mode: Small noise peaks clipped

Volume Inj. : 2 µl
 Signal #1 Phase : ZB-MR1 Signal #2 Phase: ZB-MR2
 Signal #1 Info : 30Mx0.32mmx 0.50µ Signal #2 Info : 30M x 0.32mm x 0.25µm

Compound	RT#1	RT#2	Resp#1	Resp#2	ng/ml	ng/ml

System Monitoring Compounds						
1) SA Tetrachlo...	4.958	3.948	2467352	1489741	54.288	54.441
2) SA Decachlor...	10.994	9.245	2355518	1395634	51.167	50.140
Target Compounds						
21) L5 AR-1248-1	6.278	5.199	537439	303838	512.055	481.468
22) L5 AR-1248-2	6.573	5.463	700674	411549	471.977	501.724
23) L5 AR-1248-3	6.790	5.508	838411	429377	507.573	501.741
24) L5 AR-1248-4	7.219	5.691	973529	501738	515.065	493.024
25) L5 AR-1248-5	7.259	6.114	945045	558873	504.938	526.869

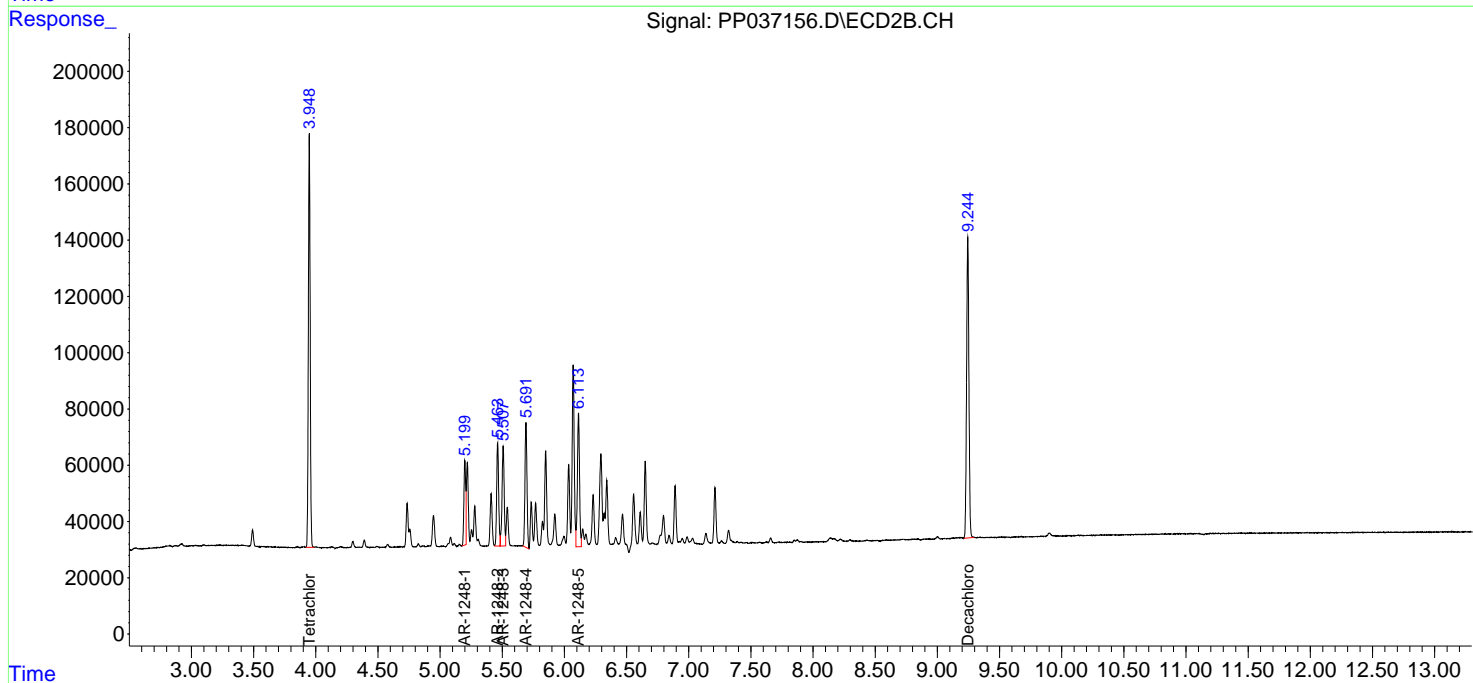
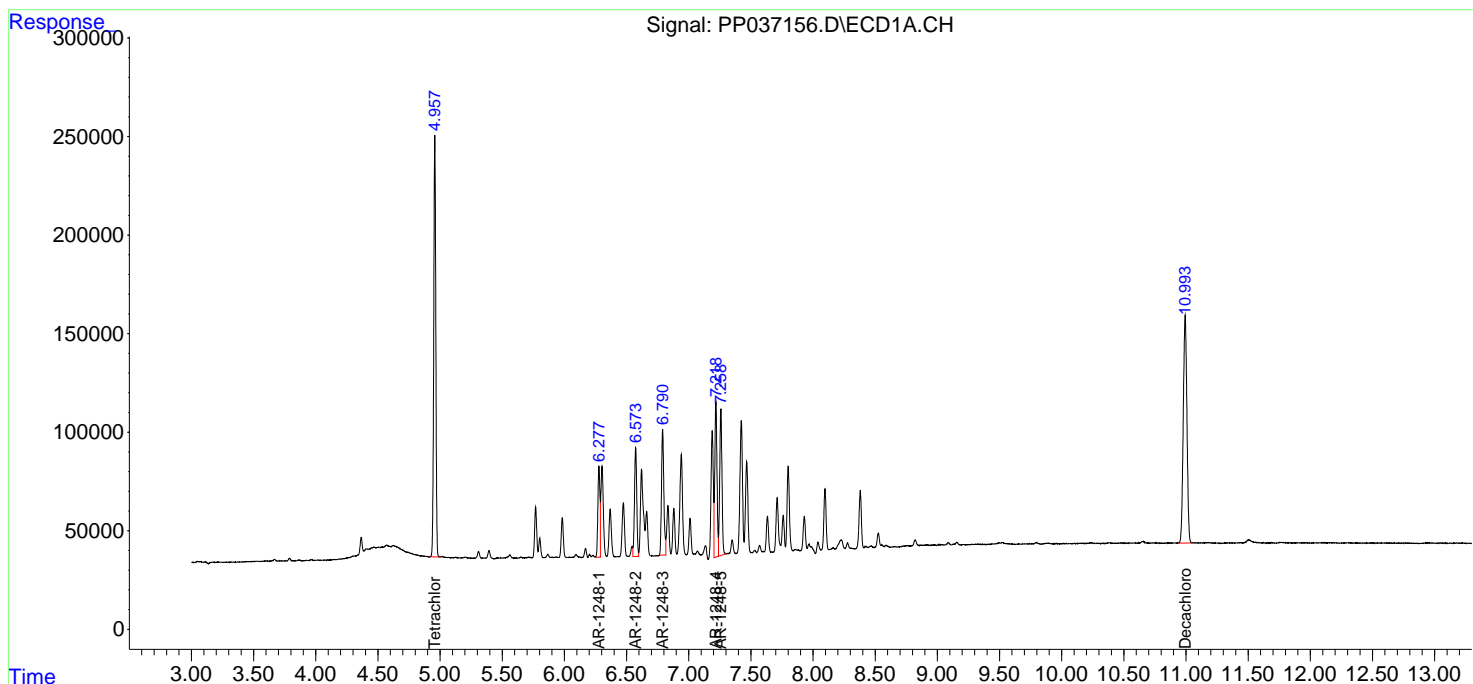
(f)=RT Delta > 1/2 Window (#)=Amounts differ by > 25% (m)=manual int.

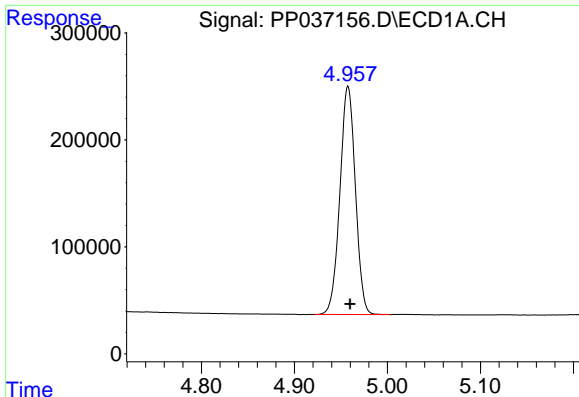
Data Path : Z:\pestpcbsrv\HPCHEM1\ECD_P\Data\PP070921\
 Data File : PP037156.D
 Signal(s) : Signal #1: ECD1A.CH Signal #2: ECD2B.CH
 Acq On : 09 Jul 2021 10:24
 Operator : DD\AJ
 Sample : AR1248CCC500
 Misc :
 ALS Vial : 5 Sample Multiplier: 1

Instrument :
 ECD_P
 ClientSampleId :
 AR1248CCC500

Integration File signal 1: autoint1.e
 Integration File signal 2: autoint2.e
 Quant Time: Jul 09 15:21:00 2021
 Quant Method : Z:\pestpcbsrv\HPCHEM1\ECD_P\methods\PP070621.M
 Quant Title : GC EXTRACTABLES
 QLast Update : Wed Jul 07 08:32:32 2021
 Response via : Initial Calibration
 Integrator: ChemStation 6890 Scale Mode: Small noise peaks clipped

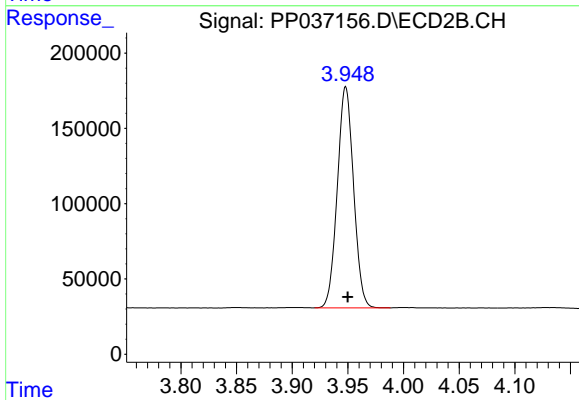
Volume Inj. : 2 µl
 Signal #1 Phase : ZB-MR1 Signal #2 Phase: ZB-MR2
 Signal #1 Info : 30Mx0.32mmx 0.50µ Signal #2 Info : 30M x 0.32mm x 0.25µm



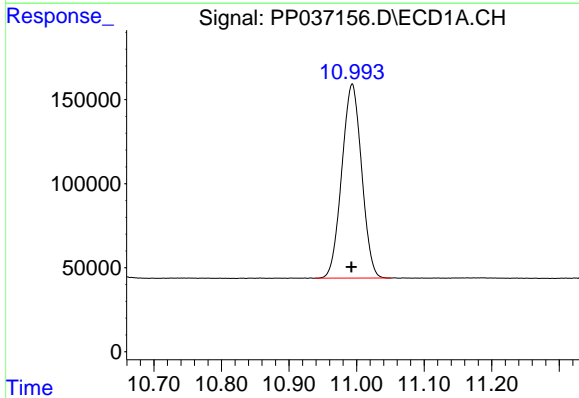


#1 Tetrachloro-m-xylene
 R.T.: 4.958 min
 Delta R.T.: -0.002 min
 Response: 2467352
 Conc: 54.29 ng/ml

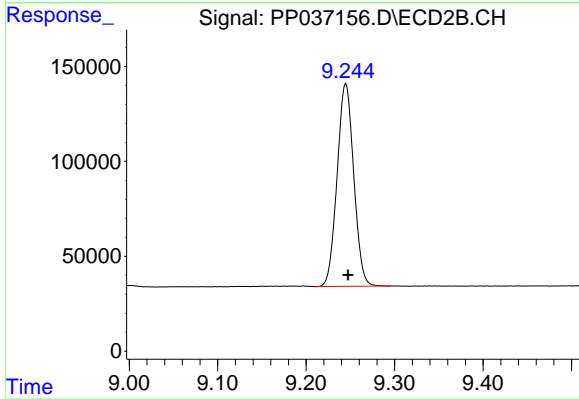
Instrument :
 ECD_P
 ClientSampleId :
 AR1248CCC500



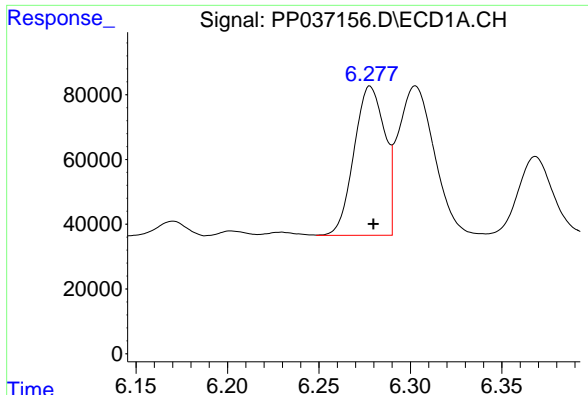
#1 Tetrachloro-m-xylene
 R.T.: 3.948 min
 Delta R.T.: -0.002 min
 Response: 1489741
 Conc: 54.44 ng/ml



#2 Decachlorobiphenyl
 R.T.: 10.994 min
 Delta R.T.: 0.001 min
 Response: 2355518
 Conc: 51.17 ng/ml



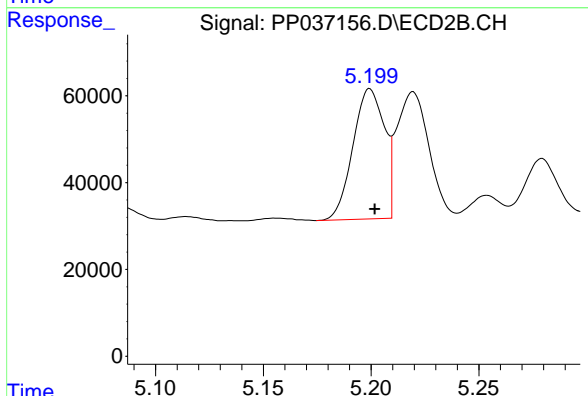
#2 Decachlorobiphenyl
 R.T.: 9.245 min
 Delta R.T.: -0.003 min
 Response: 1395634
 Conc: 50.14 ng/ml



#21 AR-1248-1

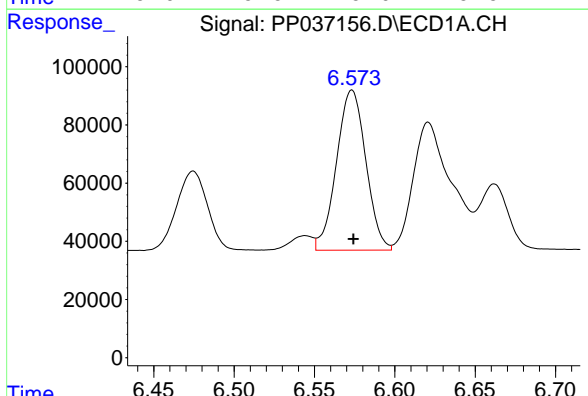
R.T.: 6.278 min
 Delta R.T.: -0.002 min
 Response: 537439
 Conc: 512.05 ng/ml

Instrument :
 ECD_P
 ClientSampleId :
 AR1248CCC500



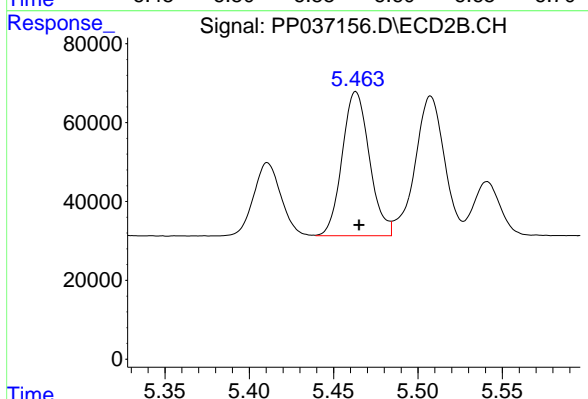
#21 AR-1248-1

R.T.: 5.199 min
 Delta R.T.: -0.002 min
 Response: 303838
 Conc: 481.47 ng/ml



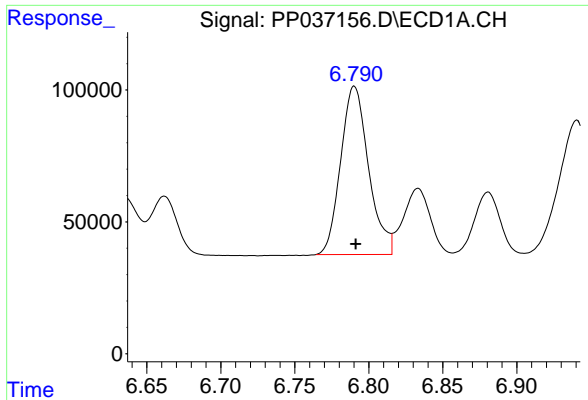
#22 AR-1248-2

R.T.: 6.573 min
 Delta R.T.: 0.000 min
 Response: 700674
 Conc: 471.98 ng/ml



#22 AR-1248-2

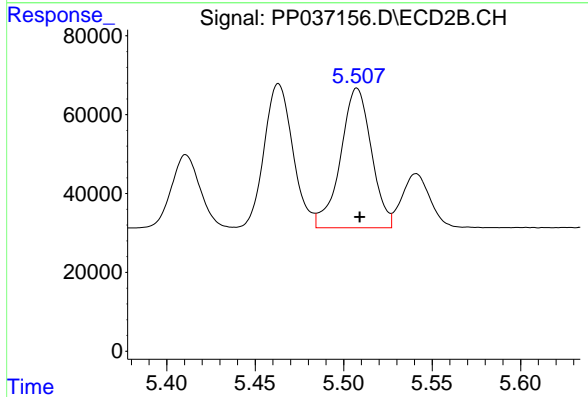
R.T.: 5.463 min
 Delta R.T.: -0.002 min
 Response: 411549
 Conc: 501.72 ng/ml



#23 AR-1248-3

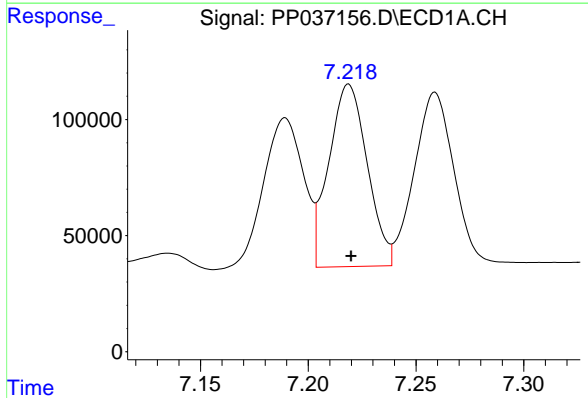
R.T.: 6.790 min
 Delta R.T.: 0.000 min
 Response: 838411
 Conc: 507.57 ng/ml

Instrument :
 ECD_P
 ClientSampleId :
 AR1248CCC500



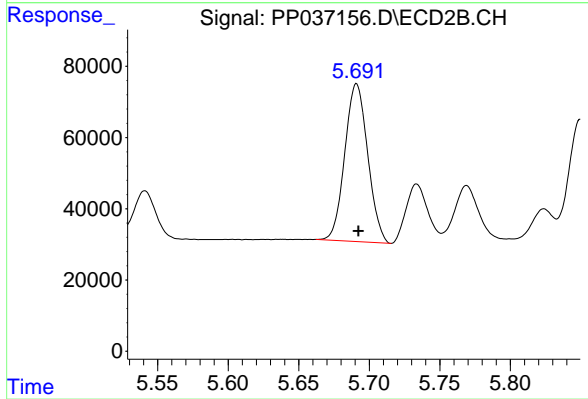
#23 AR-1248-3

R.T.: 5.508 min
 Delta R.T.: -0.002 min
 Response: 429377
 Conc: 501.74 ng/ml



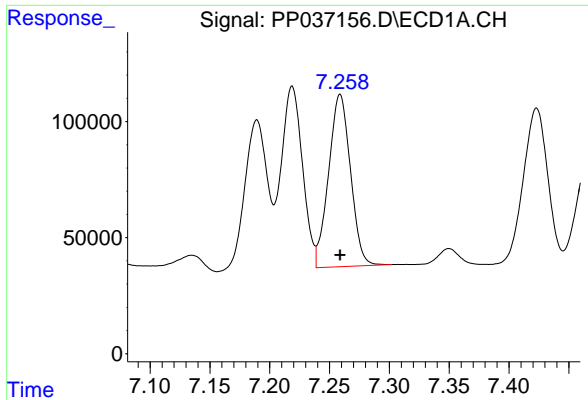
#24 AR-1248-4

R.T.: 7.219 min
 Delta R.T.: -0.001 min
 Response: 973529
 Conc: 515.06 ng/ml



#24 AR-1248-4

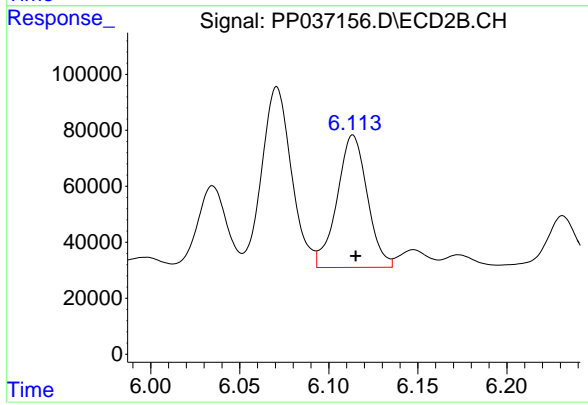
R.T.: 5.691 min
 Delta R.T.: -0.001 min
 Response: 501738
 Conc: 493.02 ng/ml



#25 AR-1248-5

R.T.: 7.259 min
Delta R.T.: 0.000 min
Response: 945045
Conc: 504.94 ng/ml

Instrument :
ECD_P
ClientSampleId :
AR1248CCC500



#25 AR-1248-5

R.T.: 6.114 min
Delta R.T.: -0.002 min
Response: 558873
Conc: 526.87 ng/ml