

Data Path : Z:\pestpcbsrv\HPCHEM1\ECD\_P\Data\PP070925\  
 Data File : PP073592.D  
 Signal(s) : Signal #1: ECD1A.ch Signal #2: ECD2B.ch  
 Acq On : 08 Jul 2025 09:55  
 Operator : YP\AJ  
 Sample : AR1254CCC500  
 Misc :  
 ALS Vial : 6 Sample Multiplier: 1

Instrument :  
 ECD\_P  
 ClientSampleId :  
 AR1254CCC500

Integration File signal 1: autoint1.e  
 Integration File signal 2: autoint2.e  
 Quant Time: Jul 08 11:11:50 2025  
 Quant Method : Z:\pestpcbsrv\HPCHEM1\ECD\_P\methods\PP070825.M  
 Quant Title : GC EXTRACTABLES  
 QLast Update : Tue Jul 08 08:35:32 2025  
 Response via : Initial Calibration  
 Integrator: ChemStation

Volume Inj. : 2 µl  
 Signal #1 Phase : ZB-MR1 Signal #2 Phase: ZB-MR2  
 Signal #1 Info : 30Mx0.32mmx 0.50µ Signal #2 Info : 30M x 0.32mm x 0.25µm

Compound	RT#1	RT#2	Resp#1	Resp#2	ng/ml	ng/ml
-----						
System Monitoring Compounds						
1) SA Tetrachlo...	4.487	3.779	73179846	98901464	53.434	53.684
2) SA Decachlor...	10.175	8.779	59699079	72757644	54.717	54.988
Target Compounds						
3) L1 AR-1016-1	5.639	4.856	1137315	1984349	23.937	29.107
4) L1 AR-1016-2	5.662	4.872	1256907	1813402	17.650	17.799
5) L1 AR-1016-3	5.723	5.052	673866	2208903	15.433	40.825 #
6) L1 AR-1016-4	5.819	5.093	806457	24927211	22.435	568.066 #
7) L1 AR-1016-5	6.111	5.306	9201611	16021033	293.696	293.520
8) L2 AR-1221-1	4.688	3.988	49857	221389	2.791	8.186 #
9) L2 AR-1221-2	4.790	4.078	1151561	1777551	85.273	87.305
10) L2 AR-1221-3	4.855	4.149	350564	523537	8.426	8.520
11) L3 AR-1232-1	4.855	4.149	350564	523537	10.737	11.231
12) L3 AR-1232-2	5.374	4.872	463473	1813402	28.513	38.049 #
13) L3 AR-1232-3	5.662	5.052	1256907	2208903	38.096	88.254 #
14) L3 AR-1232-4	5.819	5.133	806457	8570052	49.039	395.730 #
15) L3 AR-1232-5	5.909	5.306	15248254	16021033	1442.548	710.044 #
16) L4 AR-1242-1	5.639	4.856	1137315	1984349	29.782	34.352
17) L4 AR-1242-2	5.662	4.872	1256907	1813402	20.990	20.975
18) L4 AR-1242-3	5.723	5.052	673866	2208903	18.401	48.075 #
19) L4 AR-1242-4	5.819	5.133	806457	8570052	25.095	193.615 #
20) L4 AR-1242-5	6.552	5.657	11933345	60953070	364.523	1103.373 #
21) L5 AR-1248-1	5.639	4.856	1137315	1984349	36.841	44.200
22) L5 AR-1248-2	5.909	5.093	15248254	24927211	381.938	405.080
23) L5 AR-1248-3	6.111	5.133	9201611	8570052	207.199	133.772 #
24) L5 AR-1248-4	6.509	5.306	14908135	16021033	270.661	212.544
25) L5 AR-1248-5	6.552	5.697	11933345	9871943	221.848	132.348 #
26) L6 AR-1254-1	6.487	5.657	28231528	60953070	526.811	525.321
27) L6 AR-1254-2	6.702	5.804	45524825	52903166	546.589	525.753
28) L6 AR-1254-3	7.065	6.206	50016367	79738325	566.234	516.285
29) L6 AR-1254-4	7.347	6.435	42175826	47503870	536.131	502.372
30) L6 AR-1254-5	7.764	6.850	38895961	66718396	527.905	499.970
31) L7 AR-1260-1	7.229	6.337	20273746	38482064	343.849	394.444
32) L7 AR-1260-2	7.482	6.524	24127521	32992287	251.748	268.585
33) L7 AR-1260-3	7.826	6.675	5117902	31466120	70.040	287.457 #
34) L7 AR-1260-4	8.050	7.146	15210098	3704332	232.927	41.432 #
35) L7 AR-1260-5	8.381	7.386	6313388	8688295	41.851	38.660
36) L8 AR-1262-1	8.050	6.919	15210098	5180744	174.774	35.078 #
37) L8 AR-1262-2	8.381	7.146	6313388	3704332	31.881	28.979
38) L8 AR-1262-3	8.706	7.671	4852773	767698	38.598	6.733 #
39) L8 AR-1262-4	8.755	7.729	2163516	7872737	23.198	42.775 #
40) L8 AR-1262-5	9.433	8.231	721004	257875	11.374	3.054 #
41) L9 AR-1268-1	8.706	7.671	4852773	767698	21.740	2.498 #

Data Path : Z:\pestpcbsrv\HPCHEM1\ECD\_P\Data\PP070925\  
 Data File : PP073592.D  
 Signal(s) : Signal #1: ECD1A.ch Signal #2: ECD2B.ch  
 Acq On : 08 Jul 2025 09:55  
 Operator : YP\AJ  
 Sample : AR1254CCC500  
 Misc :  
 ALS Vial : 6 Sample Multiplier: 1

**Instrument :**  
 ECD\_P  
**ClientSampleId :**  
 AR1254CCC500

Integration File signal 1: autoint1.e  
 Integration File signal 2: autoint2.e  
 Quant Time: Jul 08 11:11:50 2025  
 Quant Method : Z:\pestpcbsrv\HPCHEM1\ECD\_P\methods\PP070825.M  
 Quant Title : GC EXTRACTABLES  
 QLast Update : Tue Jul 08 08:35:32 2025  
 Response via : Initial Calibration  
 Integrator: ChemStation

Volume Inj. : 2 µl  
 Signal #1 Phase : ZB-MR1 Signal #2 Phase: ZB-MR2  
 Signal #1 Info : 30Mx0.32mmx 0.50µ Signal #2 Info : 30M x 0.32mm x 0.25µm

	Compound	RT#1	RT#2	Resp#1	Resp#2	ng/ml	ng/ml
42)	L9 AR-1268-2	8.755	7.729	2163516	7872737	11.357	29.632 #
43)	L9 AR-1268-3	9.003	7.934	1575232	488492	9.514	2.165 #
44)	L9 AR-1268-4	9.433	8.231	721004	257875	10.368	2.774 #
45)	L9 AR-1268-5	9.838	8.526	593716	465330	1.288	0.755 #

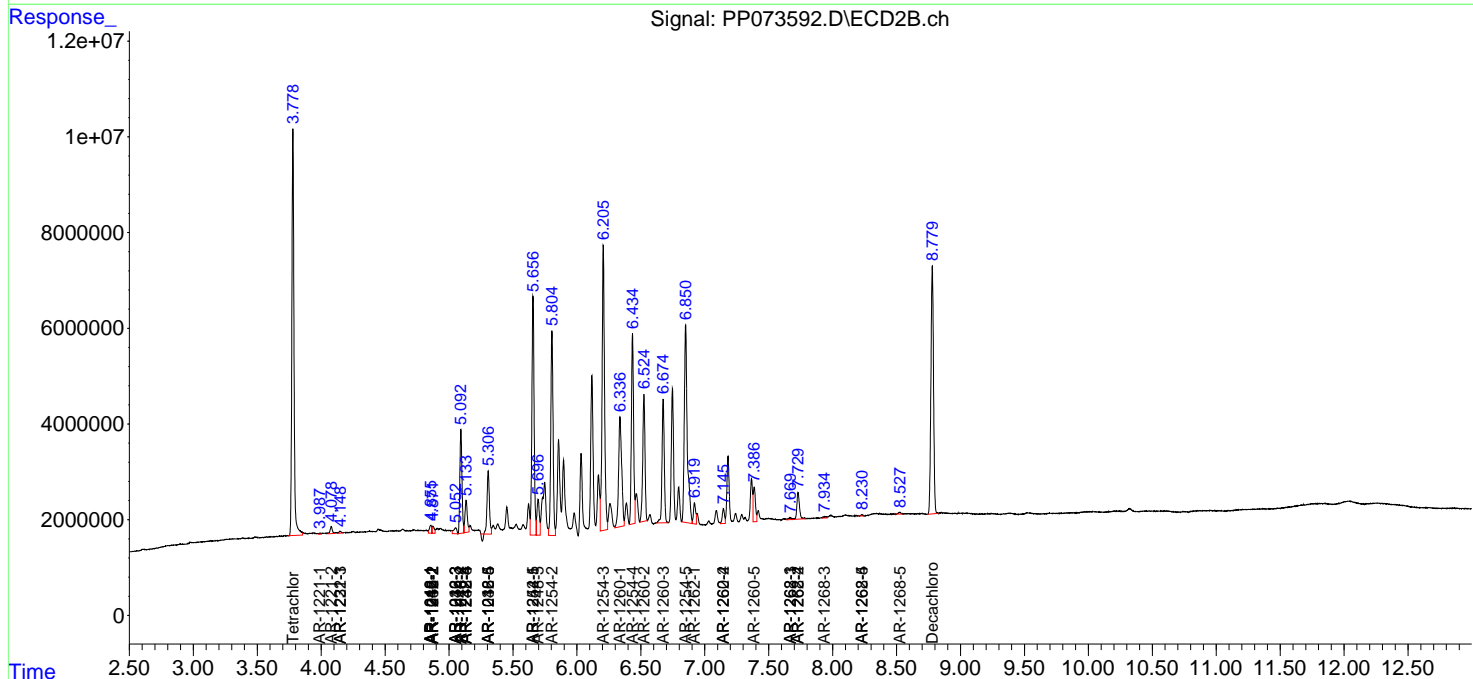
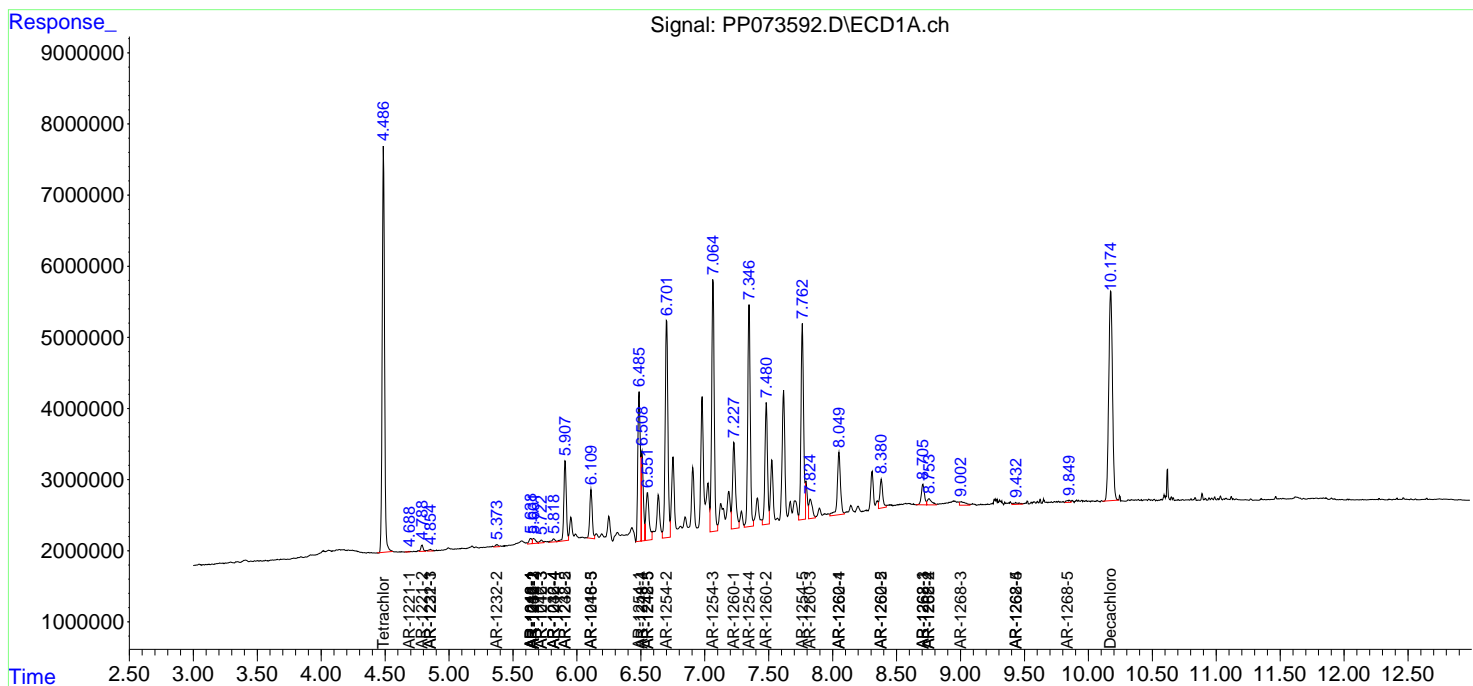
(f)=RT Delta > 1/2 Window (#)=Amounts differ by > 25% (m)=manual int.

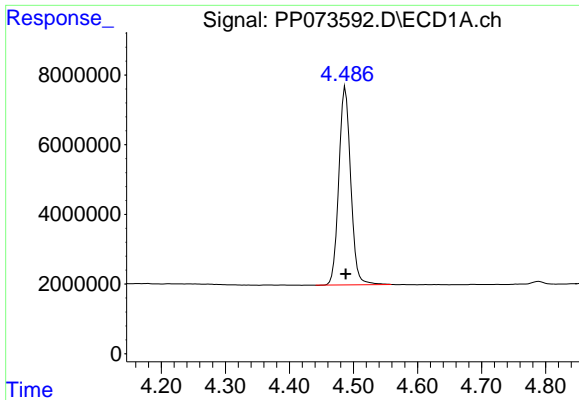
Data Path : Z:\pestpcbsrv\HPCHEM1\ECD\_P\Data\PP070925\  
 Data File : PP073592.D  
 Signal(s) : Signal #1: ECD1A.ch Signal #2: ECD2B.ch  
 Acq On : 08 Jul 2025 09:55  
 Operator : YP\AJ  
 Sample : AR1254CCC500  
 Misc :  
 ALS Vial : 6 Sample Multiplier: 1

Instrument :  
 ECD\_P  
 ClientSampleId :  
 AR1254CCC500

Integration File signal 1: autoint1.e  
 Integration File signal 2: autoint2.e  
 Quant Time: Jul 08 11:11:50 2025  
 Quant Method : Z:\pestpcbsrv\HPCHEM1\ECD\_P\methods\PP070825.M  
 Quant Title : GC EXTRACTABLES  
 QLast Update : Tue Jul 08 08:35:32 2025  
 Response via : Initial Calibration  
 Integrator: ChemStation

Volume Inj. : 2 µl  
 Signal #1 Phase : ZB-MR1 Signal #2 Phase: ZB-MR2  
 Signal #1 Info : 30Mx0.32mmx 0.50µ Signal #2 Info : 30M x 0.32mm x 0.25µm

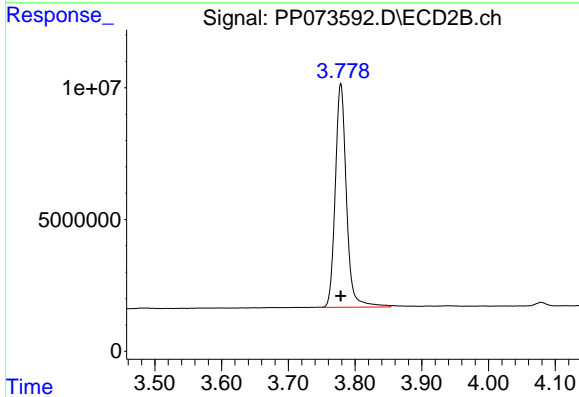




#1 Tetrachloro-m-xylene

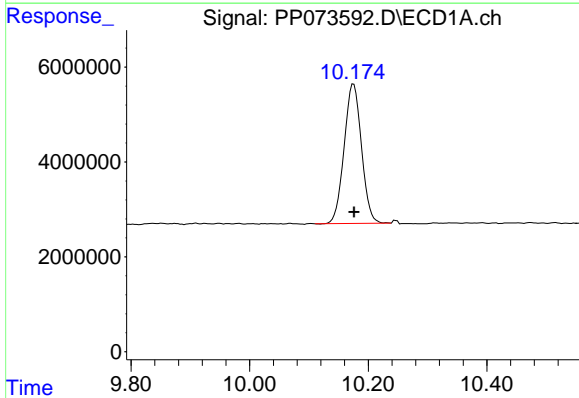
R.T.: 4.487 min  
 Delta R.T.: 0.000 min  
 Response: 73179846  
 Conc: 53.43 ng/ml

Instrument :  
 ECD\_P  
 ClientSampleId :  
 AR1254CCC500



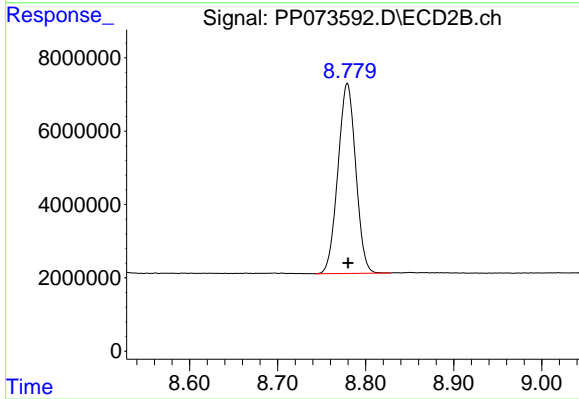
#1 Tetrachloro-m-xylene

R.T.: 3.779 min  
 Delta R.T.: 0.000 min  
 Response: 98901464  
 Conc: 53.68 ng/ml



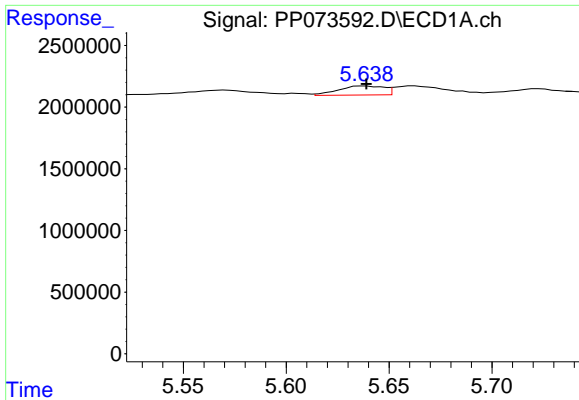
#2 Decachlorobiphenyl

R.T.: 10.175 min  
 Delta R.T.: 0.000 min  
 Response: 59699079  
 Conc: 54.72 ng/ml



#2 Decachlorobiphenyl

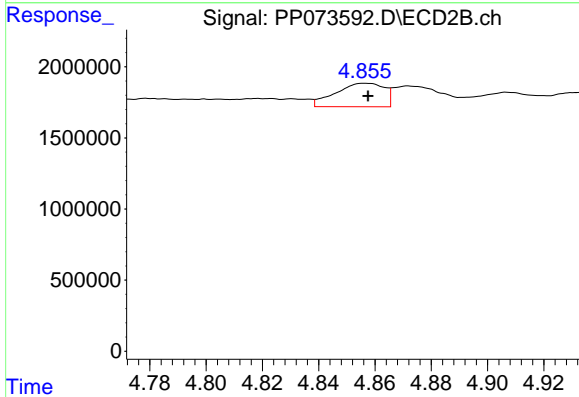
R.T.: 8.779 min  
 Delta R.T.: 0.000 min  
 Response: 72757644  
 Conc: 54.99 ng/ml



#3 AR-1016-1

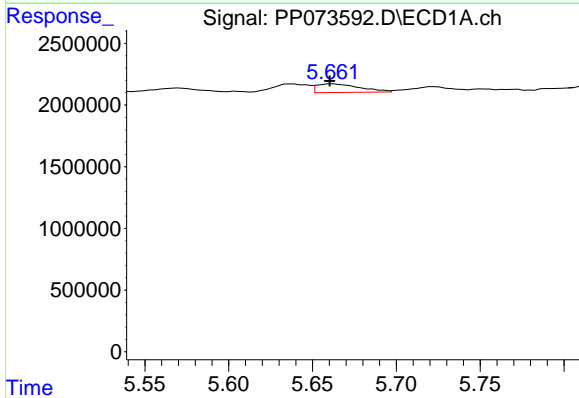
R.T.: 5.639 min  
 Delta R.T.: 0.000 min  
 Response: 1137315  
 Conc: 23.94 ng/ml

Instrument :  
 ECD\_P  
 ClientSampleId :  
 AR1254CCC500



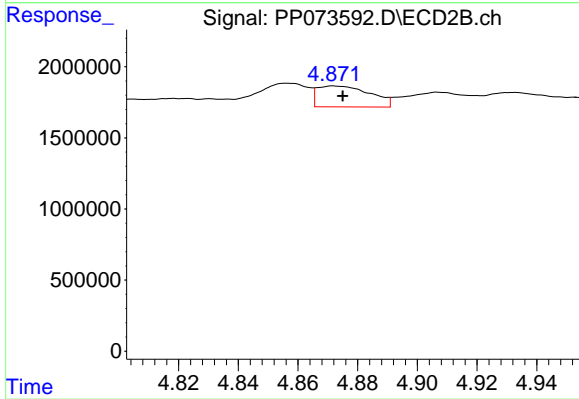
#3 AR-1016-1

R.T.: 4.856 min  
 Delta R.T.: -0.001 min  
 Response: 1984349  
 Conc: 29.11 ng/ml



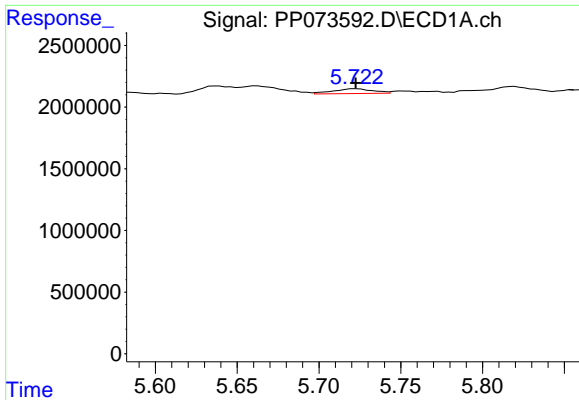
#4 AR-1016-2

R.T.: 5.662 min  
 Delta R.T.: 0.002 min  
 Response: 1256907  
 Conc: 17.65 ng/ml



#4 AR-1016-2

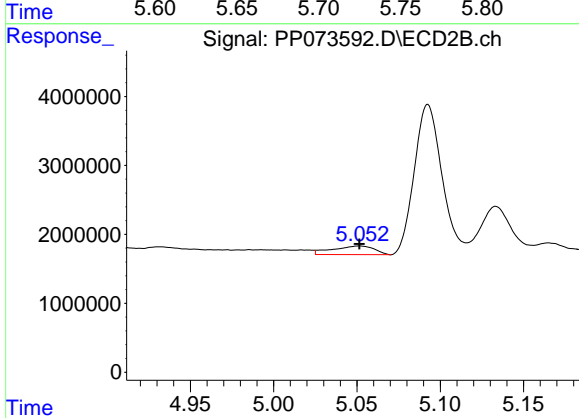
R.T.: 4.872 min  
 Delta R.T.: -0.003 min  
 Response: 1813402  
 Conc: 17.80 ng/ml



#5 AR-1016-3

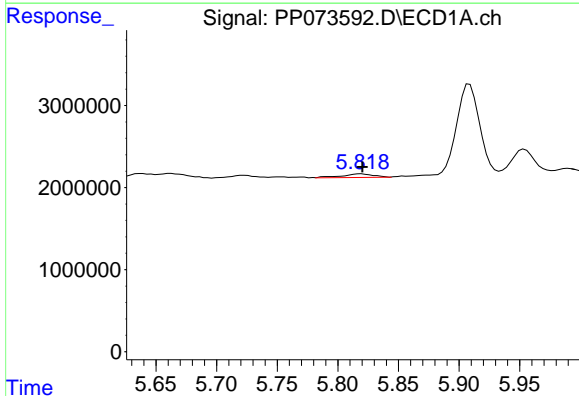
R.T.: 5.723 min  
 Delta R.T.: 0.000 min  
 Response: 673866  
 Conc: 15.43 ng/ml

Instrument :  
 ECD\_P  
 ClientSampleId :  
 AR1254CCC500



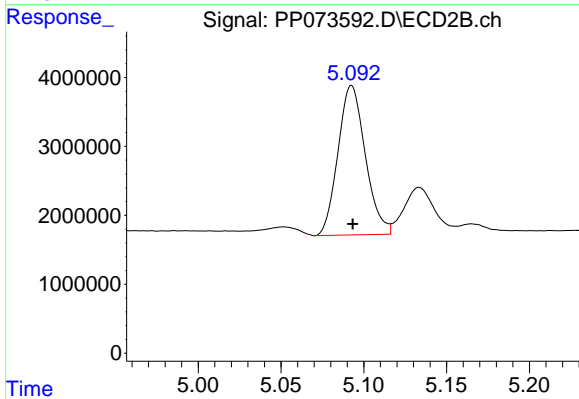
#5 AR-1016-3

R.T.: 5.052 min  
 Delta R.T.: 0.000 min  
 Response: 2208903  
 Conc: 40.83 ng/ml



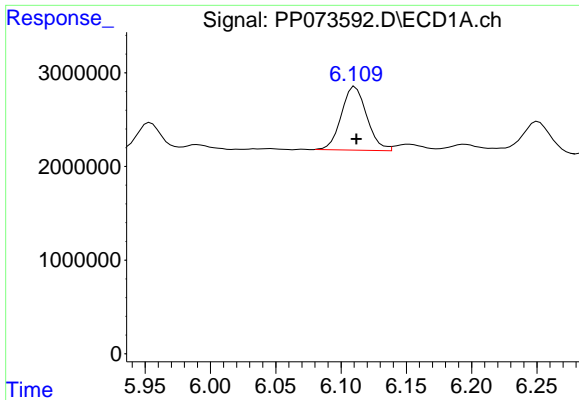
#6 AR-1016-4

R.T.: 5.819 min  
 Delta R.T.: 0.000 min  
 Response: 806457  
 Conc: 22.44 ng/ml



#6 AR-1016-4

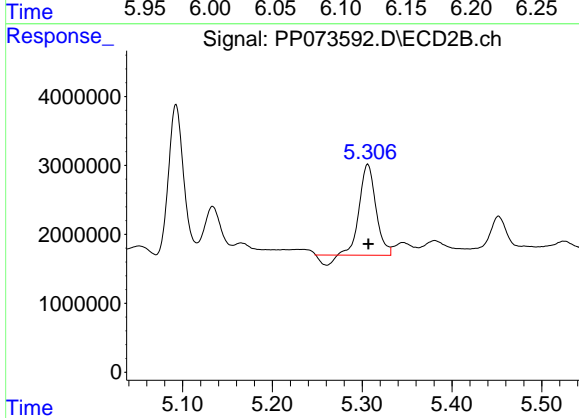
R.T.: 5.093 min  
 Delta R.T.: 0.000 min  
 Response: 24927211  
 Conc: 568.07 ng/ml



#7 AR-1016-5

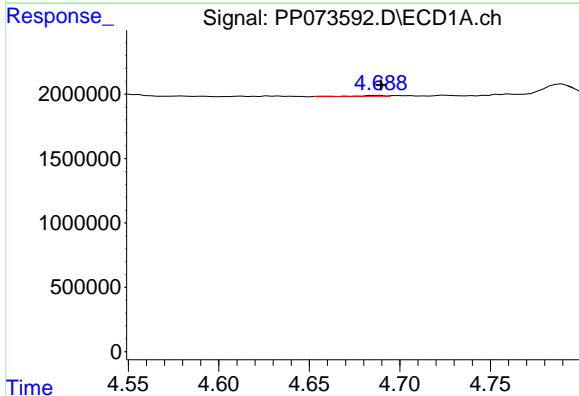
R.T.: 6.111 min  
 Delta R.T.: 0.000 min  
 Response: 9201611  
 Conc: 293.70 ng/ml

Instrument :  
 ECD\_P  
 ClientSampleId :  
 AR1254CCC500



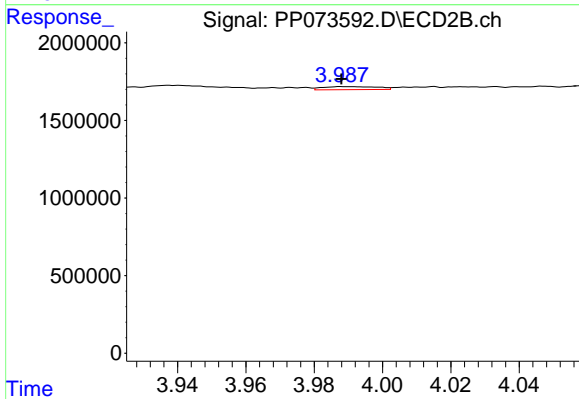
#7 AR-1016-5

R.T.: 5.306 min  
 Delta R.T.: 0.000 min  
 Response: 16021033  
 Conc: 293.52 ng/ml



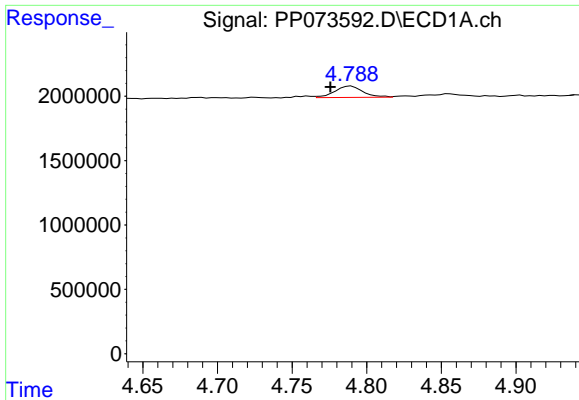
#8 AR-1221-1

R.T.: 4.688 min  
 Delta R.T.: -0.002 min  
 Response: 49857  
 Conc: 2.79 ng/ml



#8 AR-1221-1

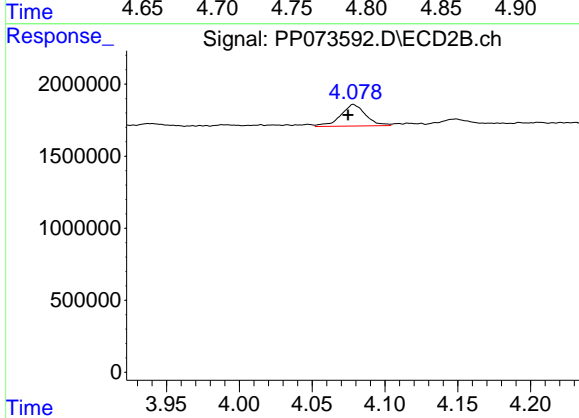
R.T.: 3.988 min  
 Delta R.T.: 0.000 min  
 Response: 221389  
 Conc: 8.19 ng/ml



#9 AR-1221-2

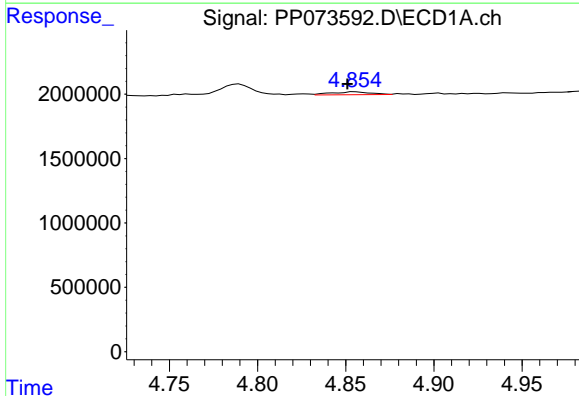
R.T.: 4.790 min  
 Delta R.T.: 0.014 min  
 Response: 1151561  
 Conc: 85.27 ng/ml

Instrument :  
 ECD\_P  
 ClientSampleId :  
 AR1254CCC500



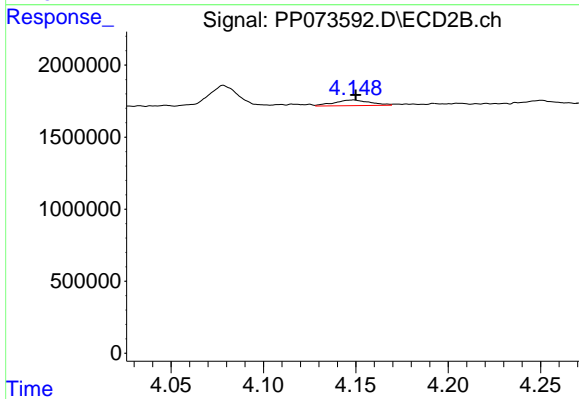
#9 AR-1221-2

R.T.: 4.078 min  
 Delta R.T.: 0.004 min  
 Response: 1777551  
 Conc: 87.30 ng/ml



#10 AR-1221-3

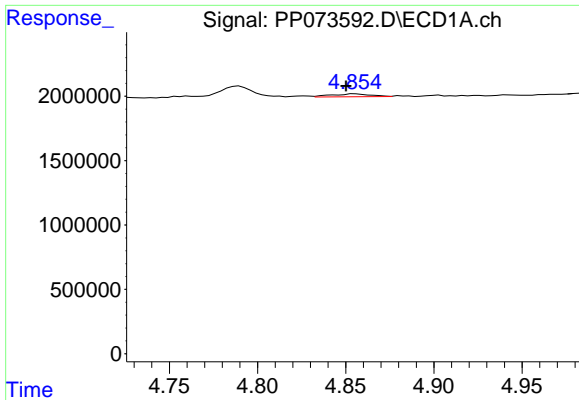
R.T.: 4.855 min  
 Delta R.T.: 0.004 min  
 Response: 350564  
 Conc: 8.43 ng/ml



#10 AR-1221-3

R.T.: 4.149 min  
 Delta R.T.: -0.001 min  
 Response: 523537  
 Conc: 8.52 ng/ml

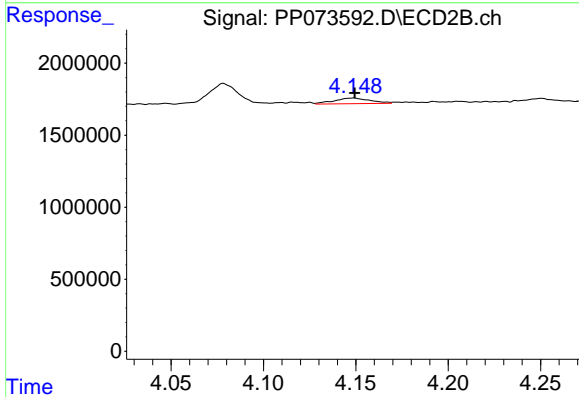




#11 AR-1232-1

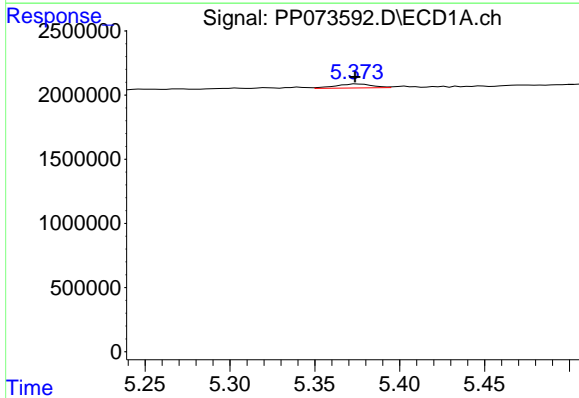
R.T.: 4.855 min  
 Delta R.T.: 0.005 min  
 Response: 350564  
 Conc: 10.74 ng/ml

Instrument :  
 ECD\_P  
 ClientSampleId :  
 AR1254CCC500



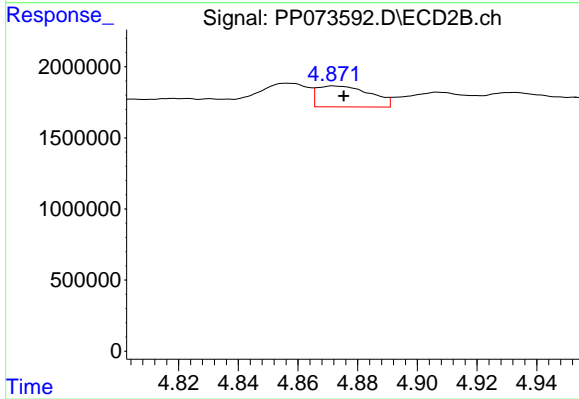
#11 AR-1232-1

R.T.: 4.149 min  
 Delta R.T.: 0.000 min  
 Response: 523537  
 Conc: 11.23 ng/ml



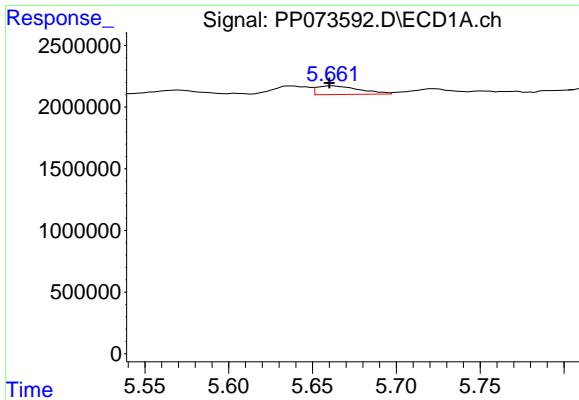
#12 AR-1232-2

R.T.: 5.374 min  
 Delta R.T.: 0.000 min  
 Response: 463473  
 Conc: 28.51 ng/ml



#12 AR-1232-2

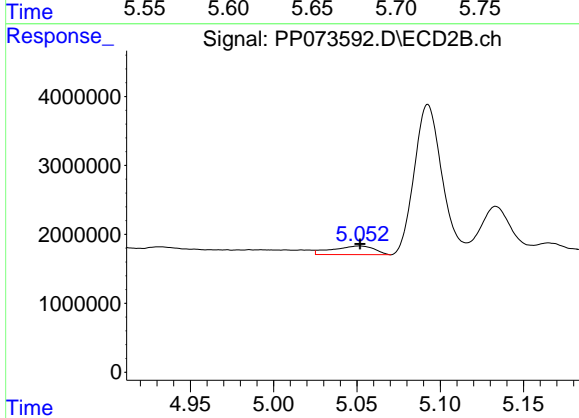
R.T.: 4.872 min  
 Delta R.T.: -0.004 min  
 Response: 1813402  
 Conc: 38.05 ng/ml



#13 AR-1232-3

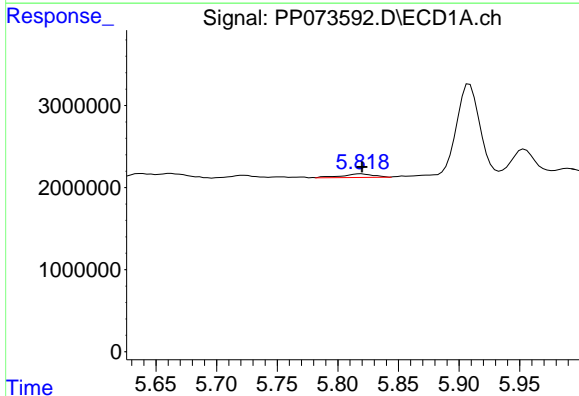
R.T.: 5.662 min  
 Delta R.T.: 0.002 min  
 Response: 1256907  
 Conc: 38.10 ng/ml

Instrument :  
 ECD\_P  
 ClientSampleId :  
 AR1254CCC500



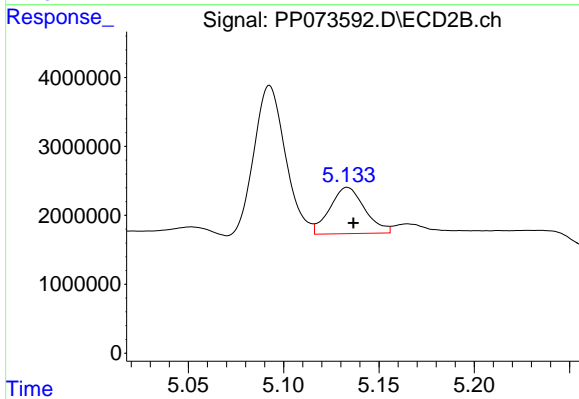
#13 AR-1232-3

R.T.: 5.052 min  
 Delta R.T.: 0.000 min  
 Response: 2208903  
 Conc: 88.25 ng/ml



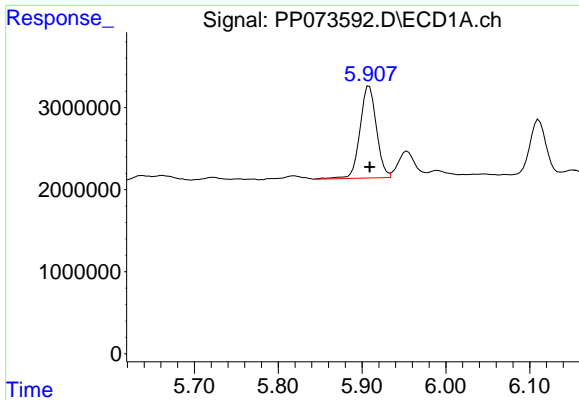
#14 AR-1232-4

R.T.: 5.819 min  
 Delta R.T.: 0.000 min  
 Response: 806457  
 Conc: 49.04 ng/ml



#14 AR-1232-4

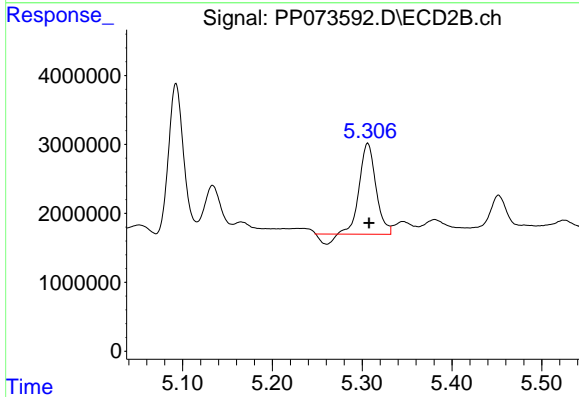
R.T.: 5.133 min  
 Delta R.T.: -0.003 min  
 Response: 8570052  
 Conc: 395.73 ng/ml



#15 AR-1232-5

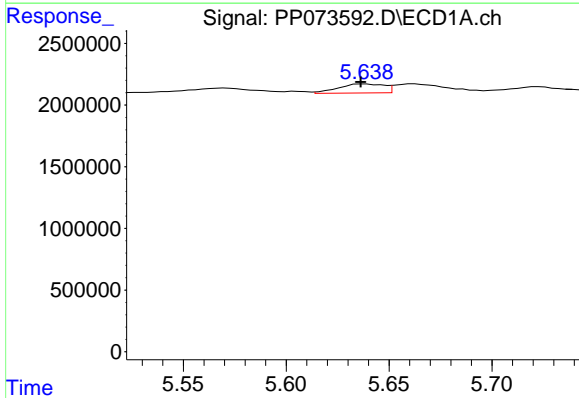
R.T.: 5.909 min  
 Delta R.T.: 0.000 min  
 Response: 15248254  
 Conc: 1442.55 ng/ml

Instrument :  
 ECD\_P  
 ClientSampleId :  
 AR1254CCC500



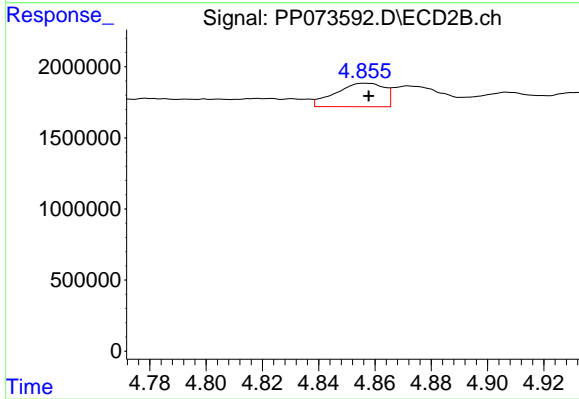
#15 AR-1232-5

R.T.: 5.306 min  
 Delta R.T.: -0.002 min  
 Response: 16021033  
 Conc: 710.04 ng/ml



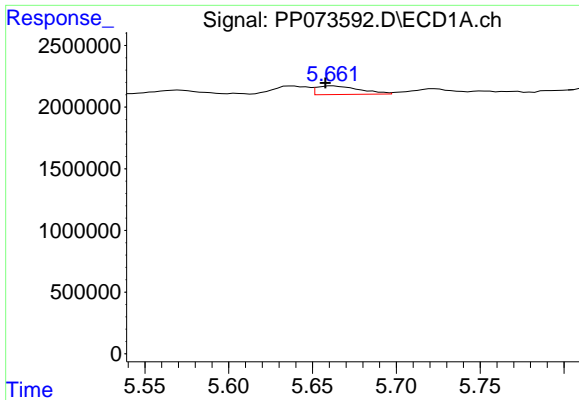
#16 AR-1242-1

R.T.: 5.639 min  
 Delta R.T.: 0.003 min  
 Response: 1137315  
 Conc: 29.78 ng/ml



#16 AR-1242-1

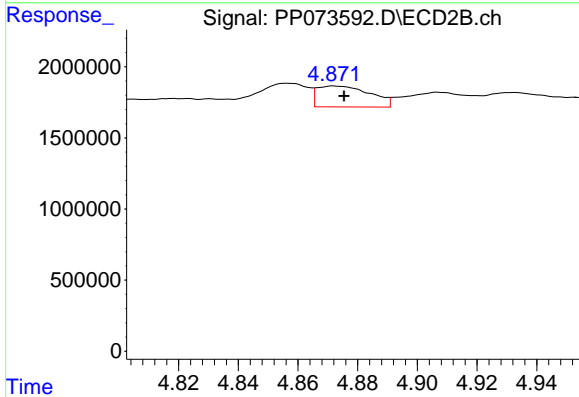
R.T.: 4.856 min  
 Delta R.T.: -0.001 min  
 Response: 1984349  
 Conc: 34.35 ng/ml



#17 AR-1242-2

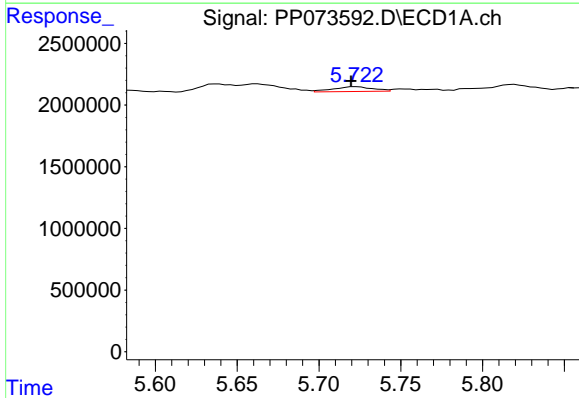
R.T.: 5.662 min  
 Delta R.T.: 0.004 min  
 Response: 1256907  
 Conc: 20.99 ng/ml

Instrument :  
 ECD\_P  
 ClientSampleId :  
 AR1254CCC500



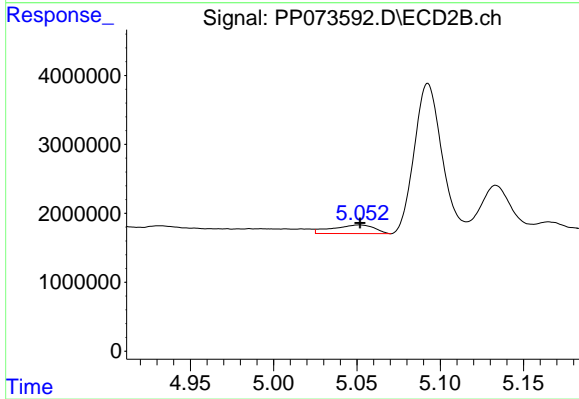
#17 AR-1242-2

R.T.: 4.872 min  
 Delta R.T.: -0.004 min  
 Response: 1813402  
 Conc: 20.98 ng/ml



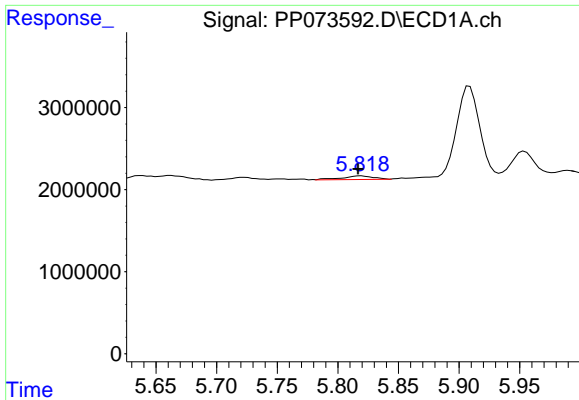
#18 AR-1242-3

R.T.: 5.723 min  
 Delta R.T.: 0.003 min  
 Response: 673866  
 Conc: 18.40 ng/ml



#18 AR-1242-3

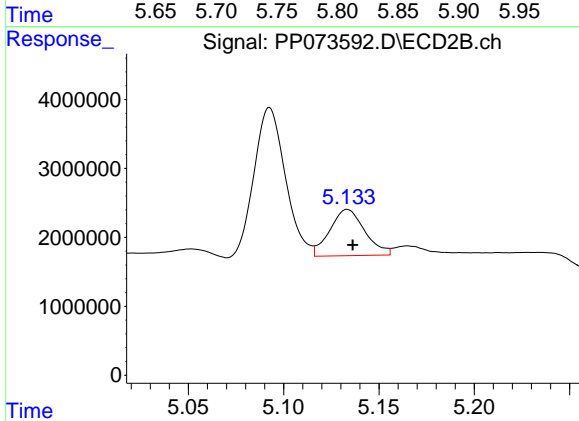
R.T.: 5.052 min  
 Delta R.T.: 0.000 min  
 Response: 2208903  
 Conc: 48.08 ng/ml



#19 AR-1242-4

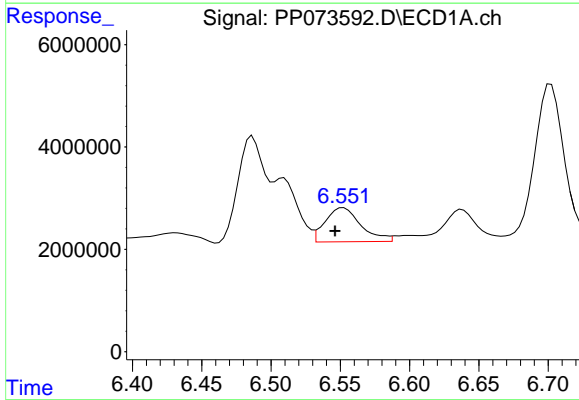
R.T.: 5.819 min  
 Delta R.T.: 0.003 min  
 Response: 806457  
 Conc: 25.10 ng/ml

Instrument :  
 ECD\_P  
 ClientSampleId :  
 AR1254CCC500



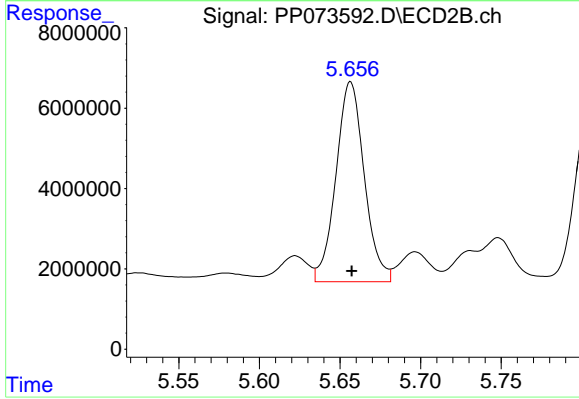
#19 AR-1242-4

R.T.: 5.133 min  
 Delta R.T.: -0.003 min  
 Response: 8570052  
 Conc: 193.62 ng/ml



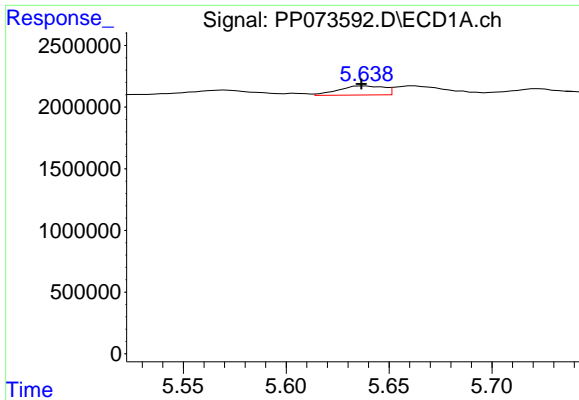
#20 AR-1242-5

R.T.: 6.552 min  
 Delta R.T.: 0.006 min  
 Response: 11933345  
 Conc: 364.52 ng/ml



#20 AR-1242-5

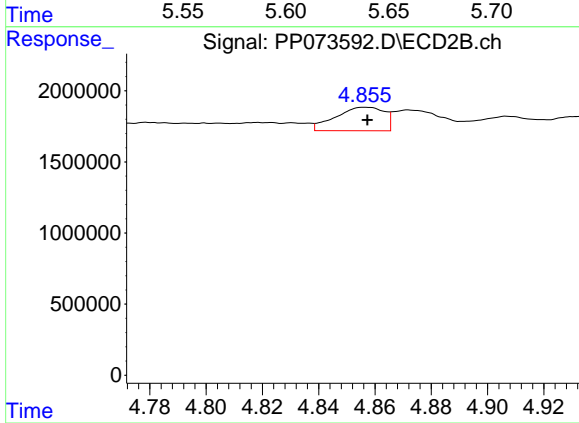
R.T.: 5.657 min  
 Delta R.T.: 0.000 min  
 Response: 60953070  
 Conc: 1103.37 ng/ml



#21 AR-1248-1

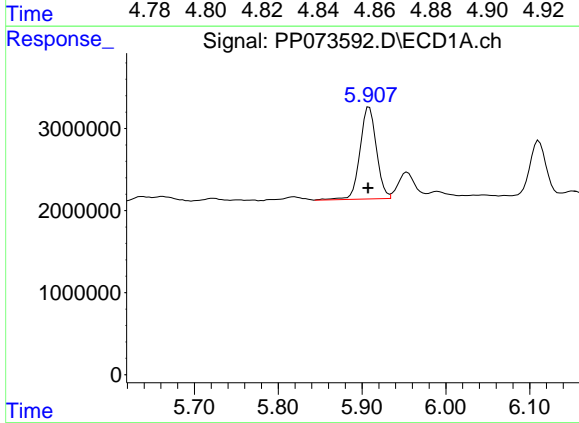
R.T.: 5.639 min  
 Delta R.T.: 0.002 min  
 Response: 1137315  
 Conc: 36.84 ng/ml

Instrument :  
 ECD\_P  
 ClientSampleId :  
 AR1254CCC500



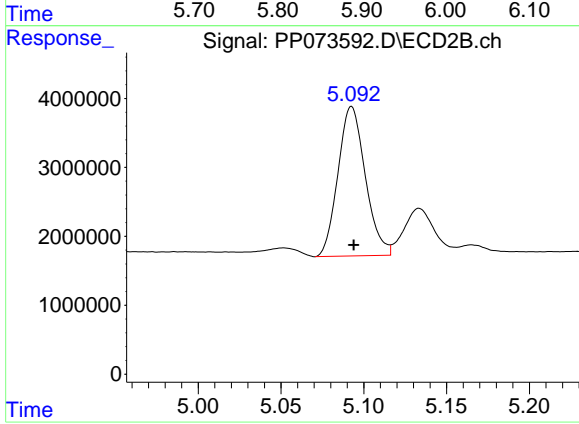
#21 AR-1248-1

R.T.: 4.856 min  
 Delta R.T.: 0.000 min  
 Response: 1984349  
 Conc: 44.20 ng/ml



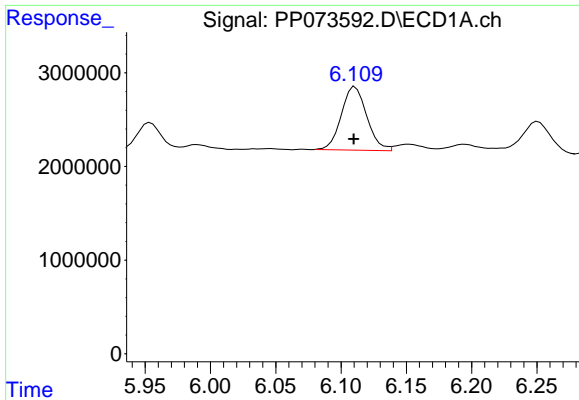
#22 AR-1248-2

R.T.: 5.909 min  
 Delta R.T.: 0.001 min  
 Response: 15248254  
 Conc: 381.94 ng/ml



#22 AR-1248-2

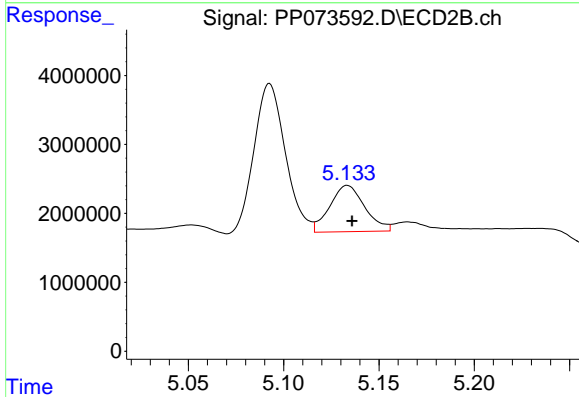
R.T.: 5.093 min  
 Delta R.T.: -0.001 min  
 Response: 24927211  
 Conc: 405.08 ng/ml



#23 AR-1248-3

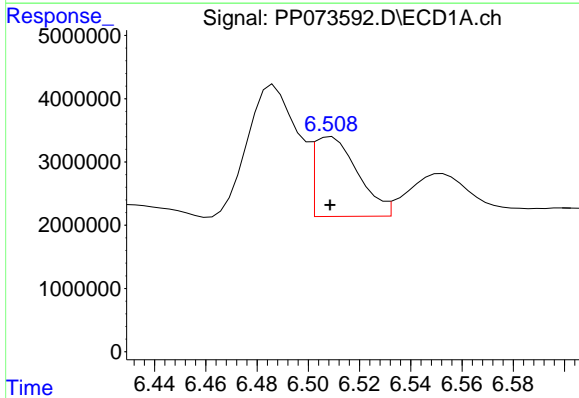
R.T.: 6.111 min  
 Delta R.T.: 0.001 min  
 Response: 9201611  
 Conc: 207.20 ng/ml

Instrument :  
 ECD\_P  
 ClientSampleId :  
 AR1254CCC500



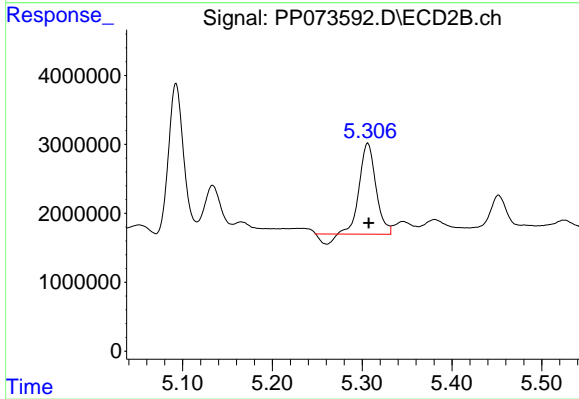
#23 AR-1248-3

R.T.: 5.133 min  
 Delta R.T.: -0.002 min  
 Response: 8570052  
 Conc: 133.77 ng/ml



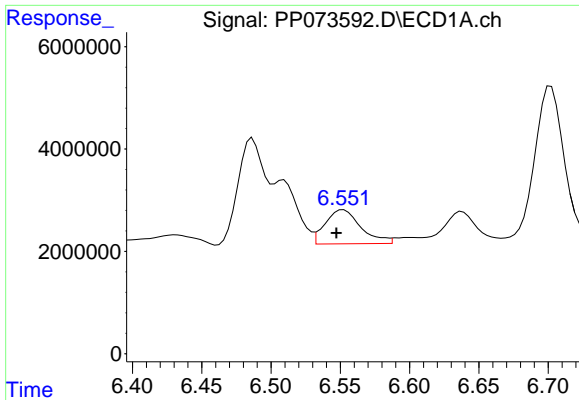
#24 AR-1248-4

R.T.: 6.509 min  
 Delta R.T.: 0.000 min  
 Response: 14908135  
 Conc: 270.66 ng/ml



#24 AR-1248-4

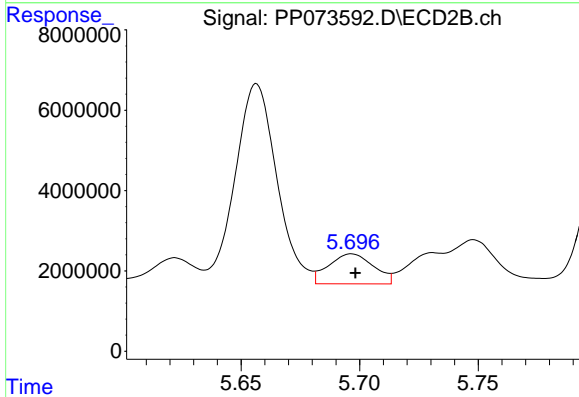
R.T.: 5.306 min  
 Delta R.T.: 0.000 min  
 Response: 16021033  
 Conc: 212.54 ng/ml



#25 AR-1248-5

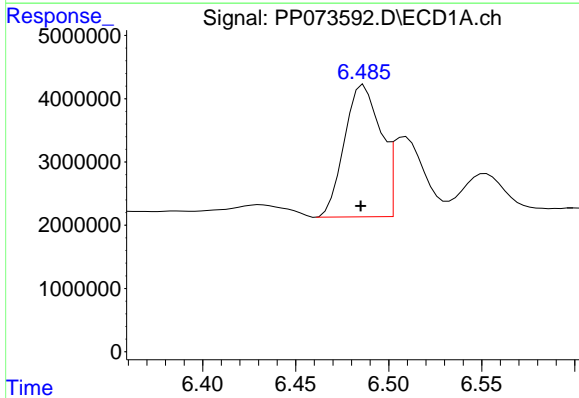
R.T.: 6.552 min  
 Delta R.T.: 0.005 min  
 Response: 11933345  
 Conc: 221.85 ng/ml

Instrument :  
 ECD\_P  
 ClientSampleId :  
 AR1254CCC500



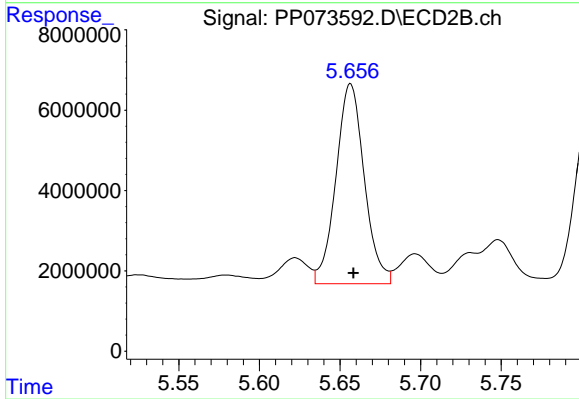
#25 AR-1248-5

R.T.: 5.697 min  
 Delta R.T.: -0.002 min  
 Response: 9871943  
 Conc: 132.35 ng/ml



#26 AR-1254-1

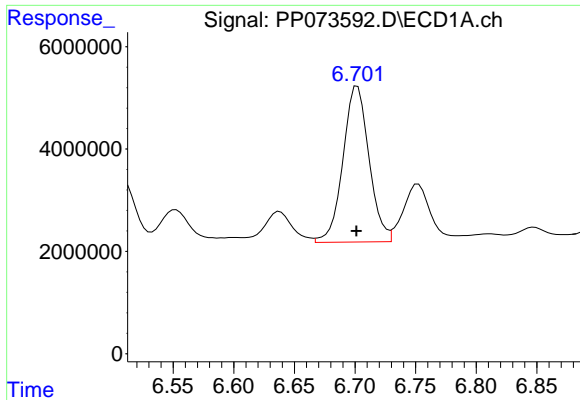
R.T.: 6.487 min  
 Delta R.T.: 0.002 min  
 Response: 28231528  
 Conc: 526.81 ng/ml



#26 AR-1254-1

R.T.: 5.657 min  
 Delta R.T.: -0.002 min  
 Response: 60953070  
 Conc: 525.32 ng/ml

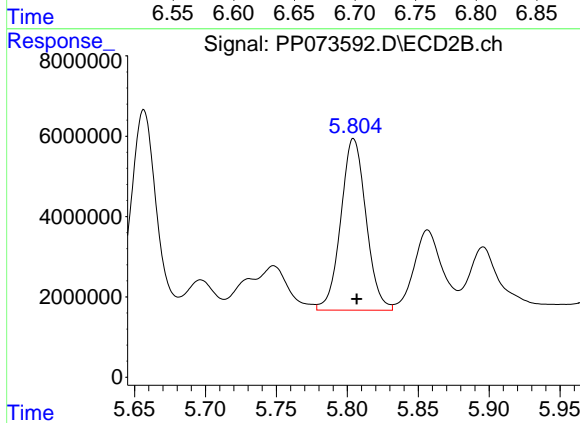




#27 AR-1254-2

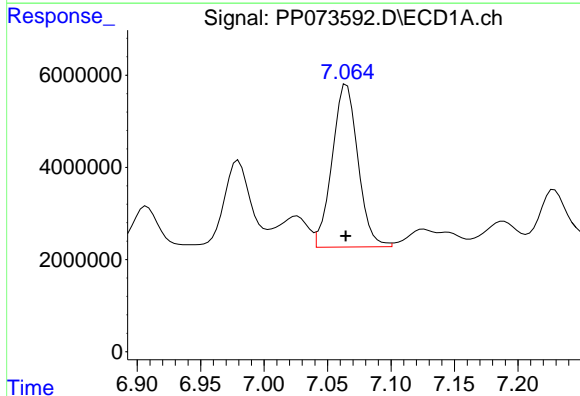
R.T.: 6.702 min  
Delta R.T.: 0.000 min  
Response: 45524825  
Conc: 546.59 ng/ml

Instrument :  
ECD\_P  
ClientSampleId :  
AR1254CCC500



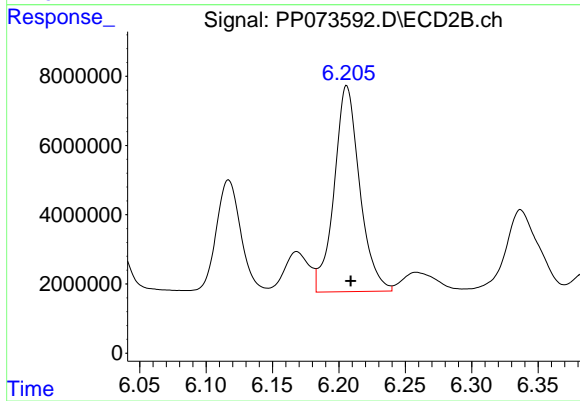
#27 AR-1254-2

R.T.: 5.804 min  
Delta R.T.: -0.002 min  
Response: 52903166  
Conc: 525.75 ng/ml



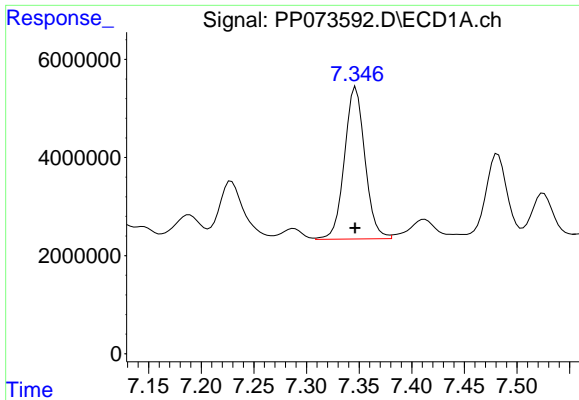
#28 AR-1254-3

R.T.: 7.065 min  
Delta R.T.: 0.000 min  
Response: 50016367  
Conc: 566.23 ng/ml



#28 AR-1254-3

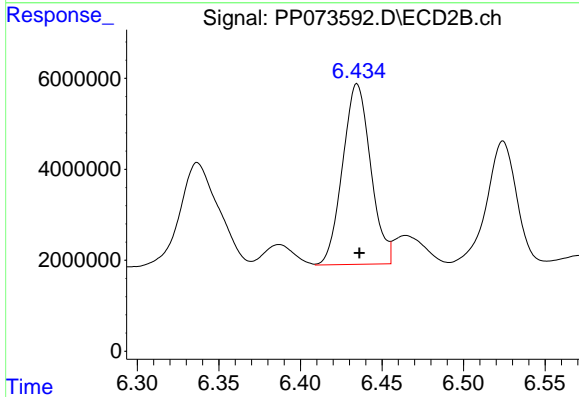
R.T.: 6.206 min  
Delta R.T.: -0.003 min  
Response: 79738325  
Conc: 516.28 ng/ml



#29 AR-1254-4

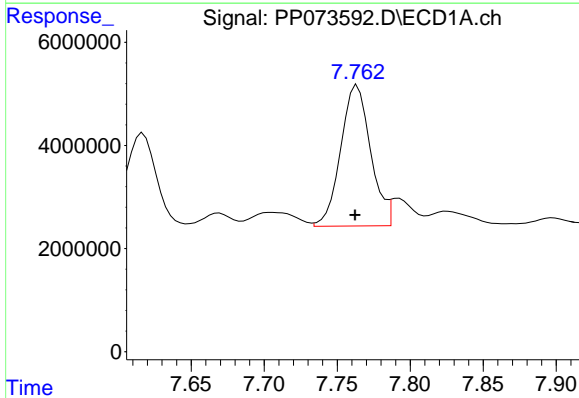
R.T.: 7.347 min  
 Delta R.T.: 0.000 min  
 Response: 42175826  
 Conc: 536.13 ng/ml

Instrument :  
 ECD\_P  
 ClientSampleId :  
 AR1254CCC500



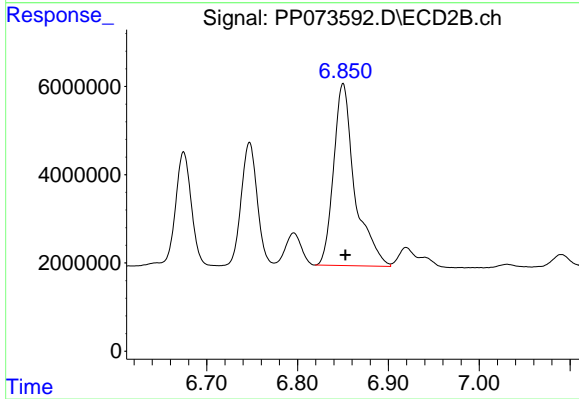
#29 AR-1254-4

R.T.: 6.435 min  
 Delta R.T.: -0.001 min  
 Response: 47503870  
 Conc: 502.37 ng/ml



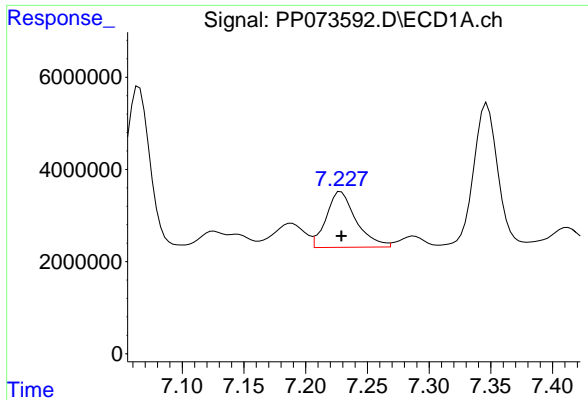
#30 AR-1254-5

R.T.: 7.764 min  
 Delta R.T.: 0.002 min  
 Response: 38895961  
 Conc: 527.91 ng/ml



#30 AR-1254-5

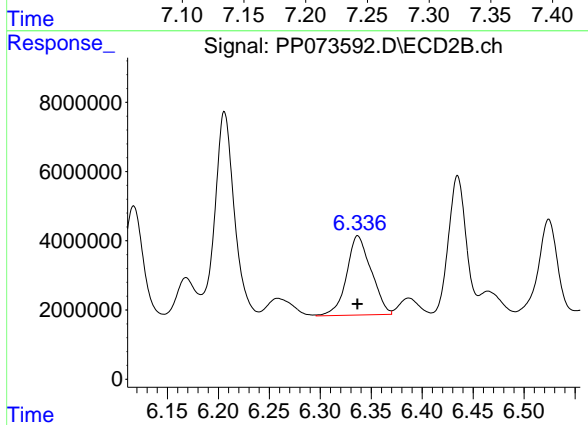
R.T.: 6.850 min  
 Delta R.T.: -0.003 min  
 Response: 66718396  
 Conc: 499.97 ng/ml



#31 AR-1260-1

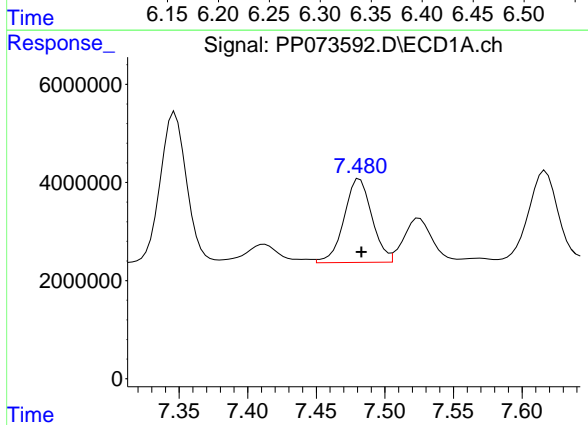
R.T.: 7.229 min  
 Delta R.T.: 0.000 min  
 Response: 20273746  
 Conc: 343.85 ng/ml

Instrument :  
 ECD\_P  
 ClientSampleId :  
 AR1254CCC500



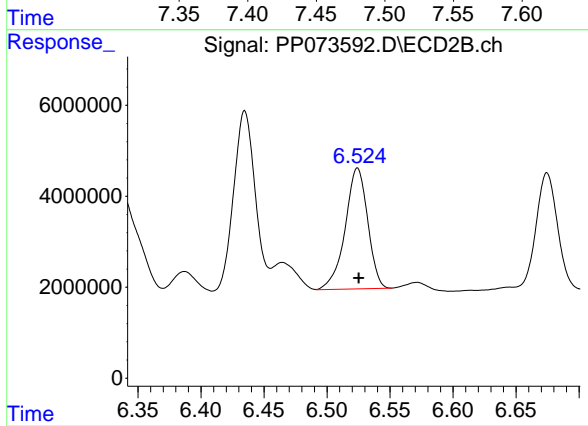
#31 AR-1260-1

R.T.: 6.337 min  
 Delta R.T.: 0.000 min  
 Response: 38482064  
 Conc: 394.44 ng/ml



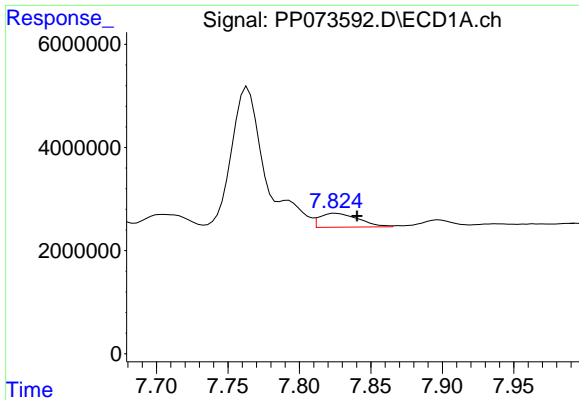
#32 AR-1260-2

R.T.: 7.482 min  
 Delta R.T.: -0.001 min  
 Response: 24127521  
 Conc: 251.75 ng/ml



#32 AR-1260-2

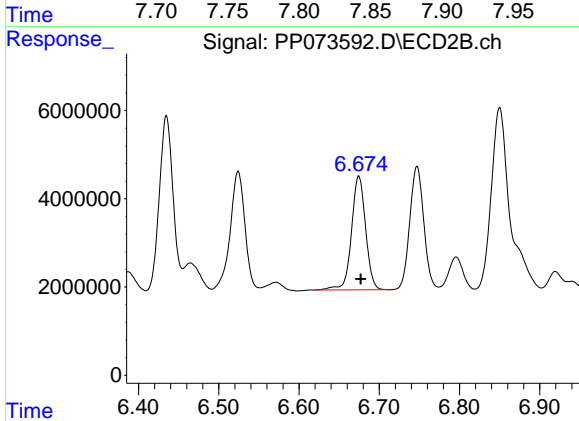
R.T.: 6.524 min  
 Delta R.T.: 0.000 min  
 Response: 32992287  
 Conc: 268.58 ng/ml



#33 AR-1260-3

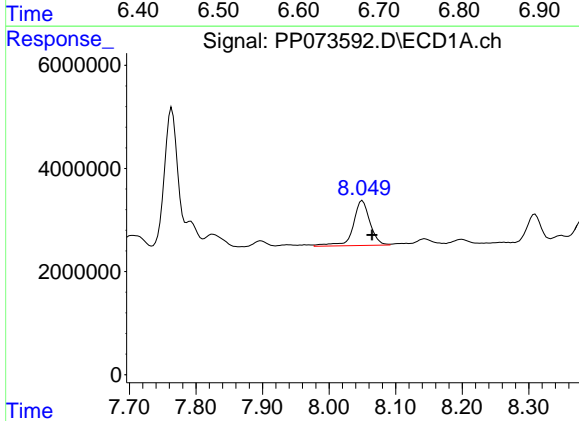
R.T.: 7.826 min  
 Delta R.T.: -0.015 min  
 Response: 5117902  
 Conc: 70.04 ng/ml

Instrument :  
 ECD\_P  
 ClientSampleId :  
 AR1254CCC500



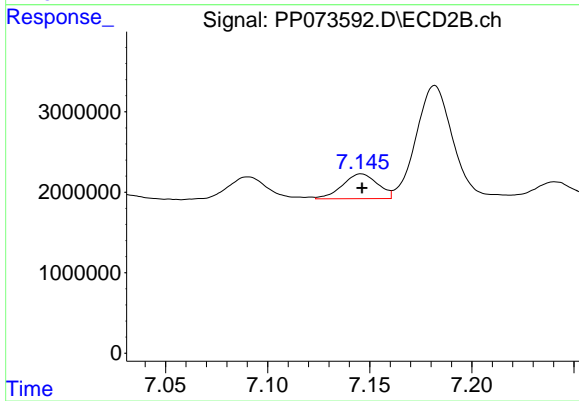
#33 AR-1260-3

R.T.: 6.675 min  
 Delta R.T.: -0.002 min  
 Response: 31466120  
 Conc: 287.46 ng/ml



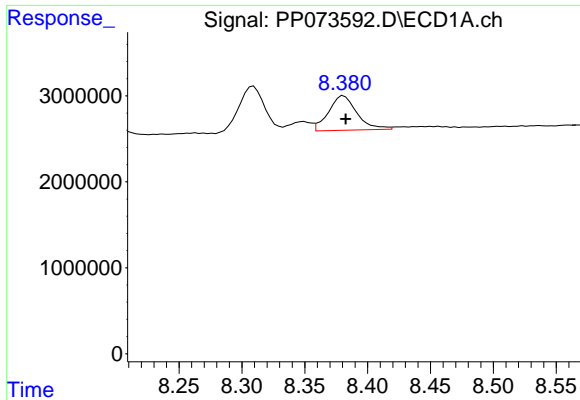
#34 AR-1260-4

R.T.: 8.050 min  
 Delta R.T.: -0.014 min  
 Response: 15210098  
 Conc: 232.93 ng/ml



#34 AR-1260-4

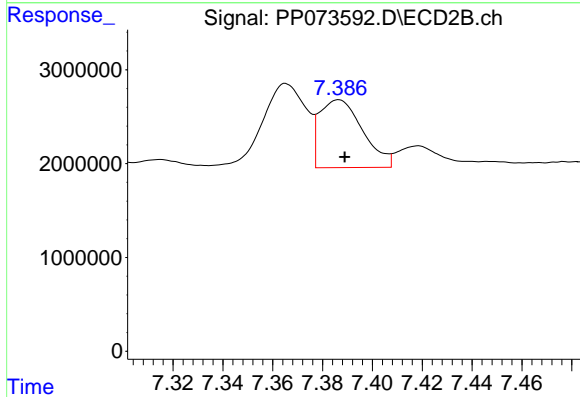
R.T.: 7.146 min  
 Delta R.T.: 0.000 min  
 Response: 3704332  
 Conc: 41.43 ng/ml



#35 AR-1260-5

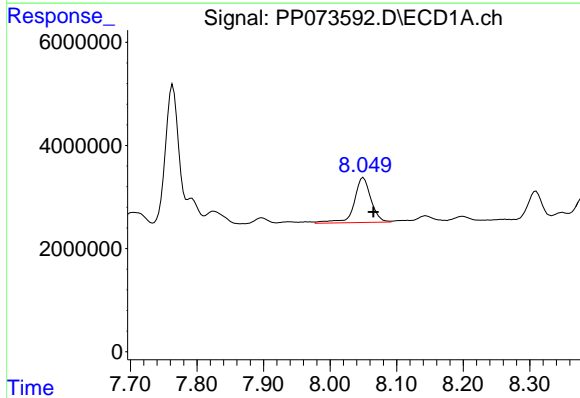
R.T.: 8.381 min  
 Delta R.T.: -0.001 min  
 Response: 6313388  
 Conc: 41.85 ng/ml

Instrument :  
 ECD\_P  
 ClientSampleId :  
 AR1254CCC500



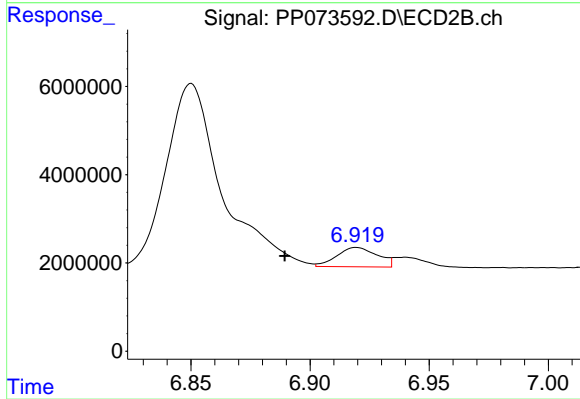
#35 AR-1260-5

R.T.: 7.386 min  
 Delta R.T.: -0.002 min  
 Response: 8688295  
 Conc: 38.66 ng/ml



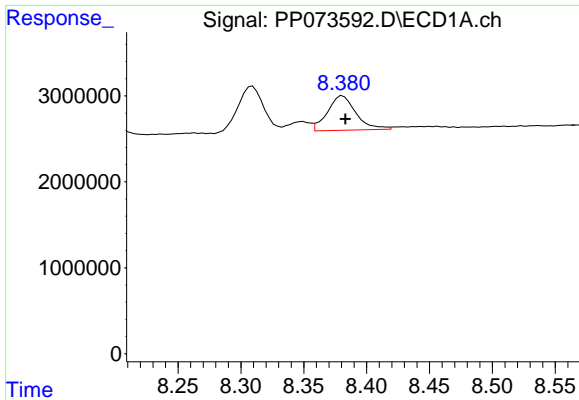
#36 AR-1262-1

R.T.: 8.050 min  
 Delta R.T.: -0.015 min  
 Response: 15210098  
 Conc: 174.77 ng/ml



#36 AR-1262-1

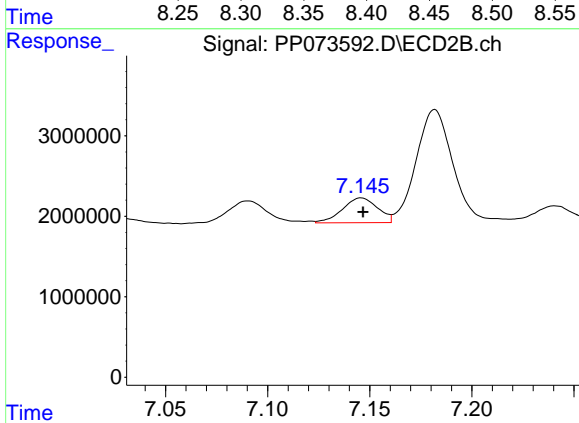
R.T.: 6.919 min  
 Delta R.T.: 0.030 min  
 Response: 5180744  
 Conc: 35.08 ng/ml



#37 AR-1262-2

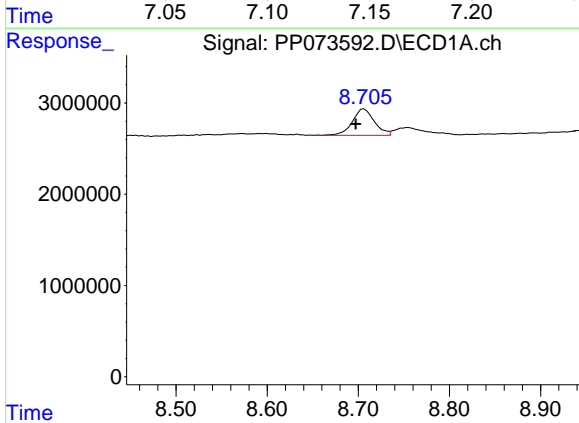
R.T.: 8.381 min  
 Delta R.T.: -0.002 min  
 Response: 6313388  
 Conc: 31.88 ng/ml

Instrument :  
 ECD\_P  
 ClientSampleId :  
 AR1254CCC500



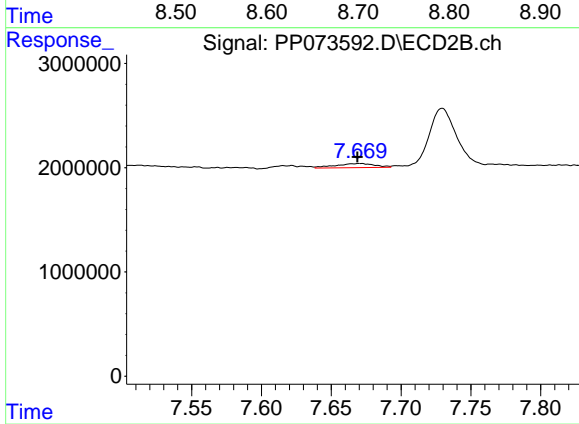
#37 AR-1262-2

R.T.: 7.146 min  
 Delta R.T.: 0.000 min  
 Response: 3704332  
 Conc: 28.98 ng/ml



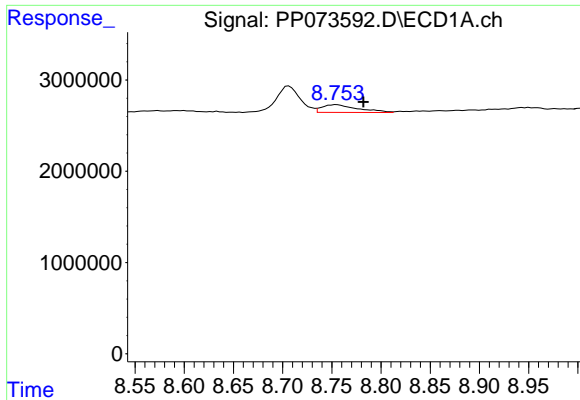
#38 AR-1262-3

R.T.: 8.706 min  
 Delta R.T.: 0.009 min  
 Response: 4852773  
 Conc: 38.60 ng/ml



#38 AR-1262-3

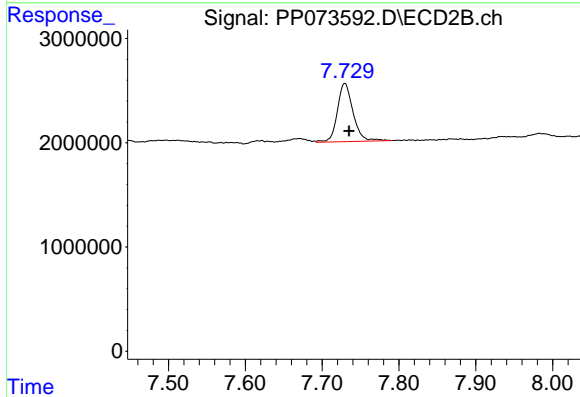
R.T.: 7.671 min  
 Delta R.T.: 0.002 min  
 Response: 767698  
 Conc: 6.73 ng/ml



#39 AR-1262-4

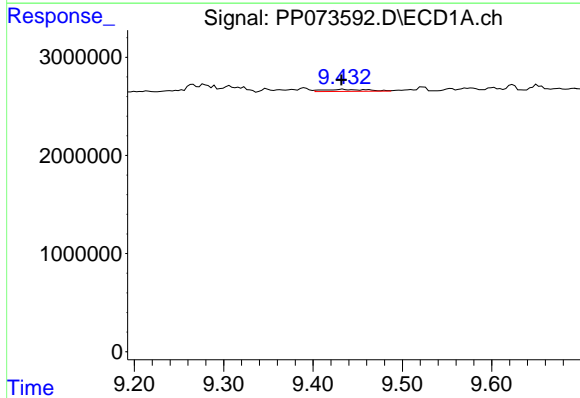
R.T.: 8.755 min  
 Delta R.T.: -0.027 min  
 Response: 2163516  
 Conc: 23.20 ng/ml

Instrument :  
 ECD\_P  
 ClientSampleId :  
 AR1254CCC500



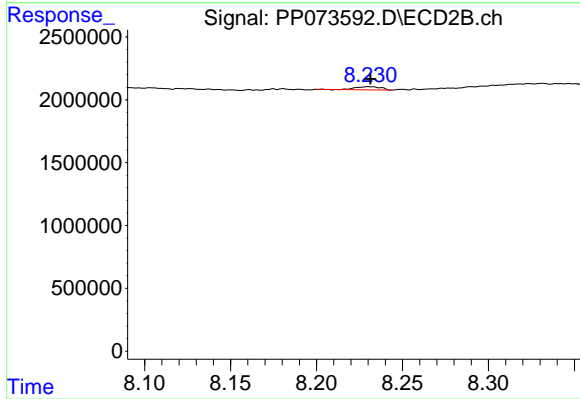
#39 AR-1262-4

R.T.: 7.729 min  
 Delta R.T.: -0.005 min  
 Response: 7872737  
 Conc: 42.78 ng/ml



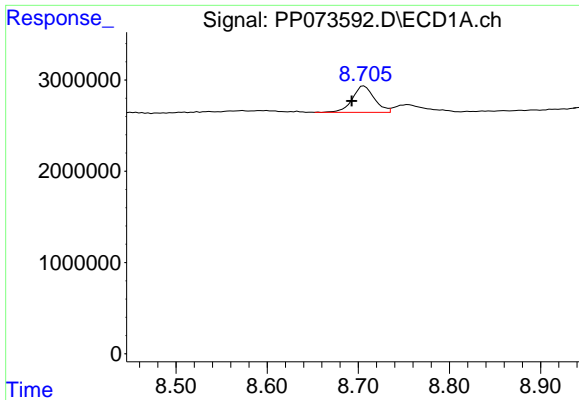
#40 AR-1262-5

R.T.: 9.433 min  
 Delta R.T.: 0.002 min  
 Response: 721004  
 Conc: 11.37 ng/ml



#40 AR-1262-5

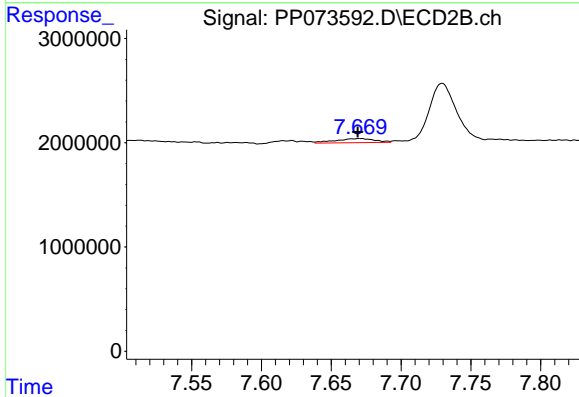
R.T.: 8.231 min  
 Delta R.T.: 0.000 min  
 Response: 257875  
 Conc: 3.05 ng/ml



#41 AR-1268-1

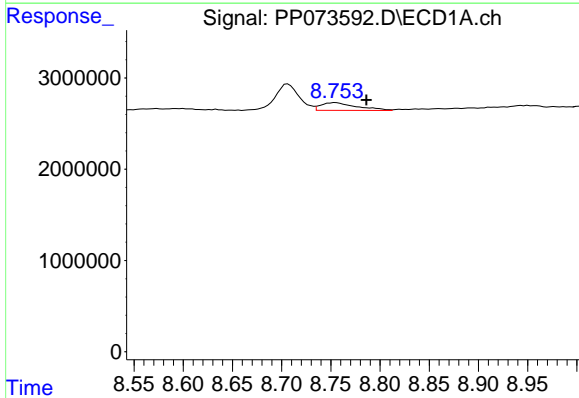
R.T.: 8.706 min  
 Delta R.T.: 0.014 min  
 Response: 4852773  
 Conc: 21.74 ng/ml

Instrument :  
 ECD\_P  
 ClientSampleId :  
 AR1254CCC500



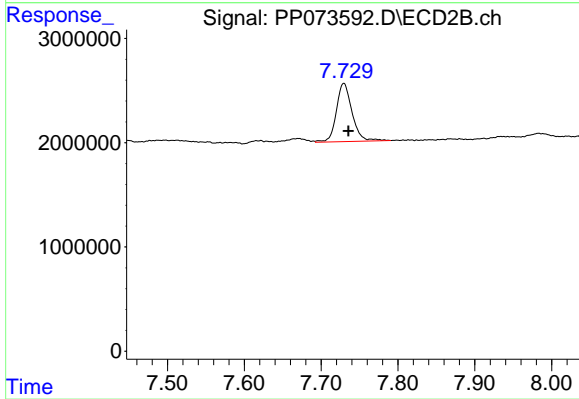
#41 AR-1268-1

R.T.: 7.671 min  
 Delta R.T.: 0.002 min  
 Response: 767698  
 Conc: 2.50 ng/ml



#42 AR-1268-2

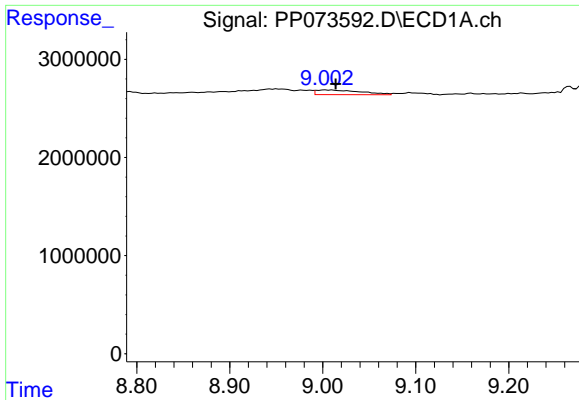
R.T.: 8.755 min  
 Delta R.T.: -0.031 min  
 Response: 2163516  
 Conc: 11.36 ng/ml



#42 AR-1268-2

R.T.: 7.729 min  
 Delta R.T.: -0.006 min  
 Response: 7872737  
 Conc: 29.63 ng/ml

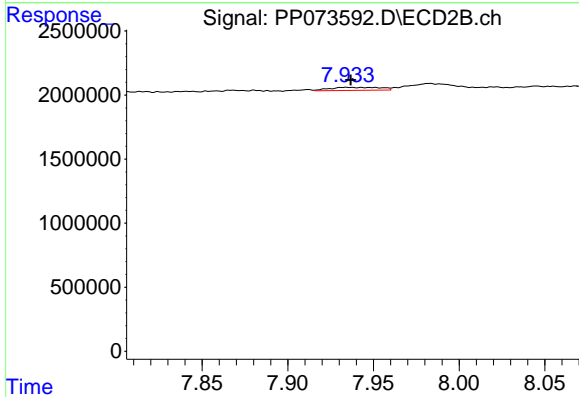




#43 AR-1268-3

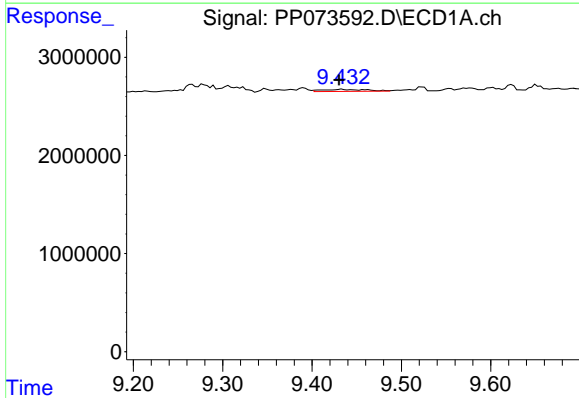
R.T.: 9.003 min  
 Delta R.T.: -0.011 min  
 Response: 1575232  
 Conc: 9.51 ng/ml

Instrument :  
 ECD\_P  
 ClientSampleId :  
 AR1254CCC500



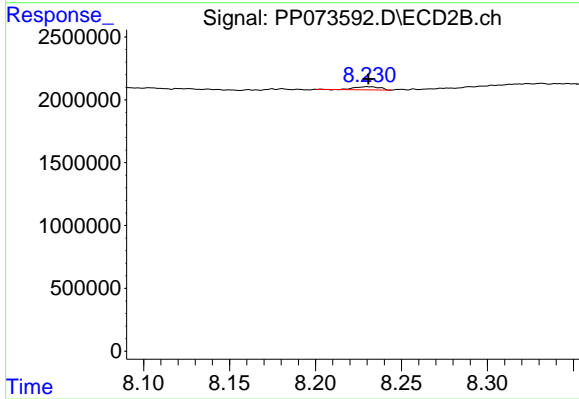
#43 AR-1268-3

R.T.: 7.934 min  
 Delta R.T.: -0.003 min  
 Response: 488492  
 Conc: 2.17 ng/ml



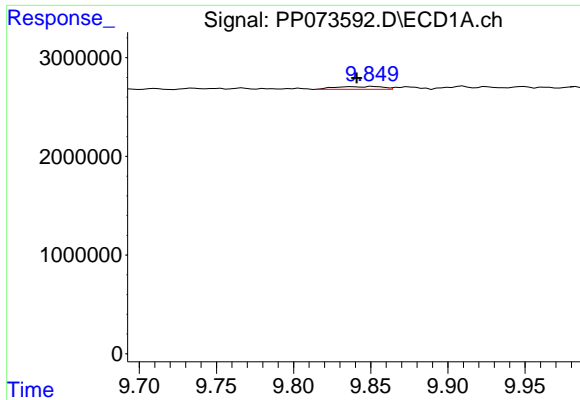
#44 AR-1268-4

R.T.: 9.433 min  
 Delta R.T.: 0.003 min  
 Response: 721004  
 Conc: 10.37 ng/ml



#44 AR-1268-4

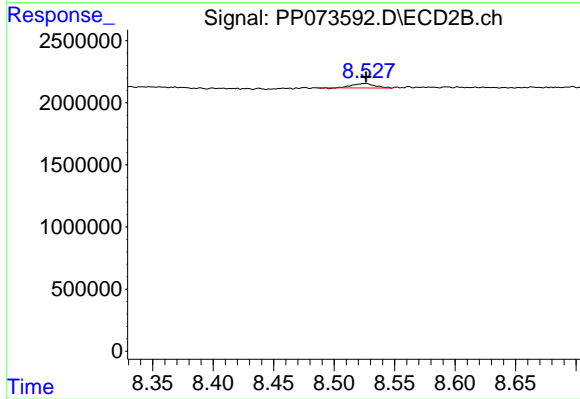
R.T.: 8.231 min  
 Delta R.T.: 0.000 min  
 Response: 257875  
 Conc: 2.77 ng/ml



#45 AR-1268-5

R.T.: 9.838 min  
Delta R.T.: -0.003 min  
Response: 593716  
Conc: 1.29 ng/ml

Instrument :  
ECD\_P  
ClientSampleId :  
AR1254CCC500



#45 AR-1268-5

R.T.: 8.526 min  
Delta R.T.: 0.000 min  
Response: 465330  
Conc: 0.75 ng/ml