

Data Path : Z:\pestpcbsrv\HPCHEM1\ECD_P\Data\PP070925\
 Data File : PP073595.D
 Signal(s) : Signal #1: ECD1A.ch Signal #2: ECD2B.ch
 Acq On : 08 Jul 2025 10:45
 Operator : YP\AJ
 Sample : DDT ANALOGUE
 Misc :
 ALS Vial : 8 Sample Multiplier: 1

Instrument :
 ECD_P
 ClientSampleId :
 DDT ANALOGUE

Integration File signal 1: autoint1.e
 Integration File signal 2: autoint2.e
 Quant Time: Jul 08 11:43:40 2025
 Quant Method : Z:\pestpcbsrv\HPCHEM1\ECD_P\methods\PP070825.M
 Quant Title : GC EXTRACTABLES
 QLast Update : Tue Jul 08 08:35:32 2025
 Response via : Initial Calibration
 Integrator: ChemStation

Volume Inj. : 2 µl
 Signal #1 Phase : ZB-MR1 Signal #2 Phase: ZB-MR2
 Signal #1 Info : 30Mx0.32mmx 0.50µ Signal #2 Info : 30M x 0.32mm x 0.25µm

Compound	RT#1	RT#2	Resp#1	Resp#2	ng/ml	ng/ml
System Monitoring Compounds						
1) SA Tetrachlo...	4.472	3.766	16223	28488	0.012	0.015 #
2) SA Decachlor...	10.164	8.754	124896	42030	0.114	0.032 #
Target Compounds						
3) L1 AR-1016-1	5.668	4.858	118283	81413	2.489	1.194 #
4) L1 AR-1016-2	5.668	4.865	118283	65911	1.661	0.647 #
5) L1 AR-1016-3	5.707	5.030	100955	70118	2.312	1.296 #
6) L1 AR-1016-4	5.840	5.099	297501	274693	8.276	6.260
7) L1 AR-1016-5	6.130	5.311	287244	191246	9.168	3.504 #
9) L2 AR-1221-2	4.776	4.079	32234	53821	2.387	2.643
10) L2 AR-1221-3	4.834	4.151	109358	44835	2.628	0.730 #
11) L3 AR-1232-1	4.834	4.151	109358	44835	3.349	0.962 #
12) L3 AR-1232-2	5.353	4.865	100418	65911	6.178	1.383 #
13) L3 AR-1232-3	5.668	5.030	118283	70118	3.585	2.801
14) L3 AR-1232-4	5.840	5.141	297501	91579	18.090	4.229 #
15) L3 AR-1232-5	5.928	5.311	257955	191246	24.404	8.476 #
16) L4 AR-1242-1	5.668	4.858	118283	81413	3.097	1.409 #
17) L4 AR-1242-2	5.668	4.865	118283	65911	1.975	0.762 #
18) L4 AR-1242-3	5.707	5.030	100955	70118	2.757	1.526 #
19) L4 AR-1242-4	5.840	5.141	297501	91579	9.258	2.069 #
20) L4 AR-1242-5	6.551	5.644	659598	988727	20.148	17.898
21) L5 AR-1248-1	5.668	4.858	118283	81413	3.832	1.813 #
22) L5 AR-1248-2	5.890	5.099	148215	274693	3.712	4.464
23) L5 AR-1248-3	6.130	5.141	287244	91579	6.468	1.429 #
24) L5 AR-1248-4	6.534	5.311	1071077	191246	19.446	2.537 #
25) L5 AR-1248-5	6.551	5.696	659598	366678	12.262	4.916 #
26) L6 AR-1254-1	6.459	5.644	6502451	988727	121.338	8.521 #
27) L6 AR-1254-2	6.697	5.826	10496187	16434989	126.021	163.331 #
28) L6 AR-1254-3	7.070	6.223	4251248	3654308	48.128	23.661 #
29) L6 AR-1254-4	7.352	6.449	1711278	346709	21.753	3.667 #
30) L6 AR-1254-5	7.781	6.849	473.8E6	752.1E6	6429.977	5635.849
31) L7 AR-1260-1	7.275f	6.340	3583979	385221	60.785	3.949 #
32) L7 AR-1260-2	7.469	6.528	598.0E6	4086043	6239.461	33.264 #
34) L7 AR-1260-4	8.068	7.143	1025841	286938	15.710	3.209 #
35) L7 AR-1260-5	8.386	7.391	269703	1186557	1.788	5.280 #
36) L8 AR-1262-1	8.068	6.849f	1025841	752.1E6	11.788	5092.196 #
37) L8 AR-1262-2	8.386	7.143	269703	286938	1.362	2.245 #
38) L8 AR-1262-3	8.713	7.672	380442	128266	3.026	1.125 #
39) L8 AR-1262-4	8.770	7.725	194231	207328	2.083	1.126 #
40) L8 AR-1262-5	9.418	8.188f	115767	135858	1.826	1.609
41) L9 AR-1268-1	8.713	7.672	380442	128266	1.704	0.417 #
42) L9 AR-1268-2	8.770	7.725	194231	207328	1.020	0.780
43) L9 AR-1268-3	9.013	7.894f	369934	51684	2.234	0.229 #

Data Path : Z:\pestpcbsrv\HPCHEM1\ECD_P\Data\PP070925\
 Data File : PP073595.D
 Signal(s) : Signal #1: ECD1A.ch Signal #2: ECD2B.ch
 Acq On : 08 Jul 2025 10:45
 Operator : YP\AJ
 Sample : DDT ANALOGUE
 Misc :
 ALS Vial : 8 Sample Multiplier: 1

Instrument :
 ECD_P
ClientSampleId :
 DDT ANALOGUE

Integration File signal 1: autoint1.e
 Integration File signal 2: autoint2.e
 Quant Time: Jul 08 11:43:40 2025
 Quant Method : Z:\pestpcbsrv\HPCHEM1\ECD_P\methods\PP070825.M
 Quant Title : GC EXTRACTABLES
 QLast Update : Tue Jul 08 08:35:32 2025
 Response via : Initial Calibration
 Integrator: ChemStation

Volume Inj. : 2 µl
 Signal #1 Phase : ZB-MR1 Signal #2 Phase: ZB-MR2
 Signal #1 Info : 30Mx0.32mmx 0.50µ Signal #2 Info : 30M x 0.32mm x 0.25µm

	Compound	RT#1	RT#2	Resp#1	Resp#2	ng/ml	ng/ml
44)	L9 AR-1268-4	9.418	8.188f	115767	135858	1.665	1.461
45)	L9 AR-1268-5	9.852	8.533	46443	175650	0.101	0.285 #

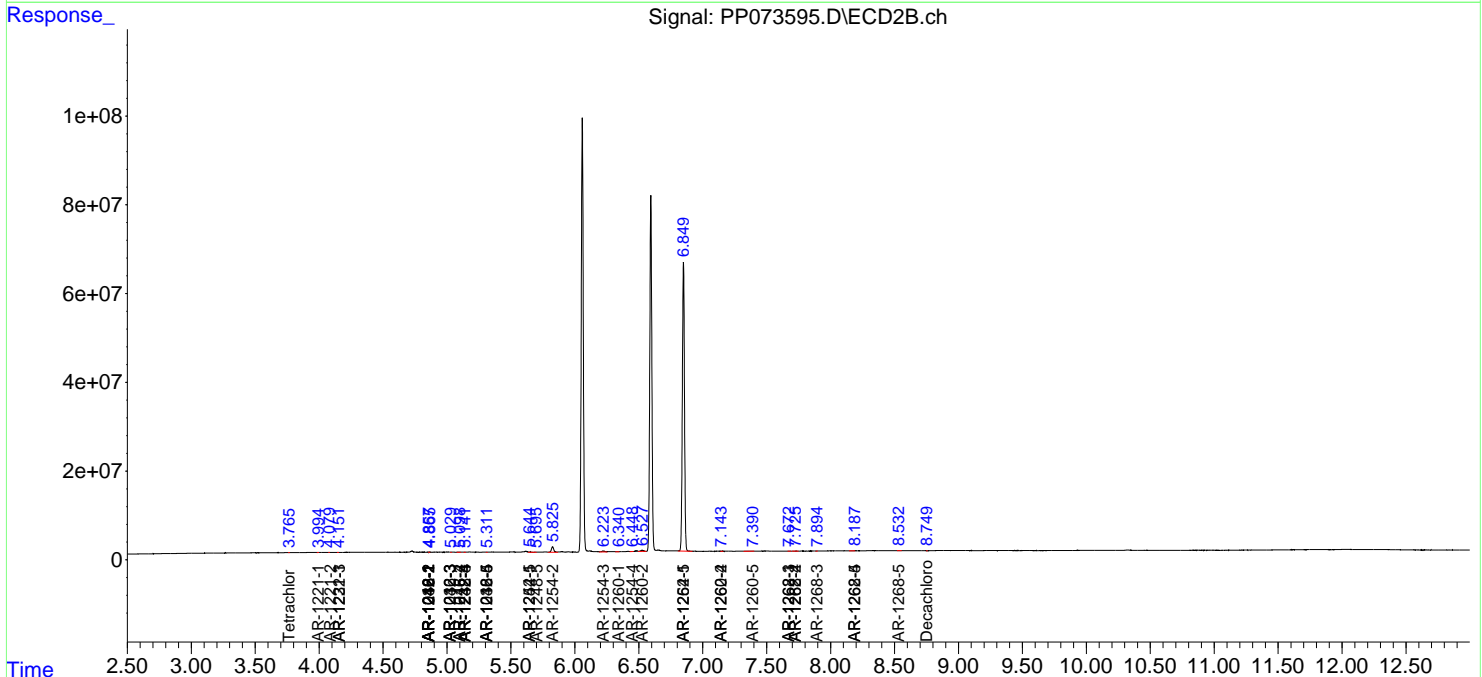
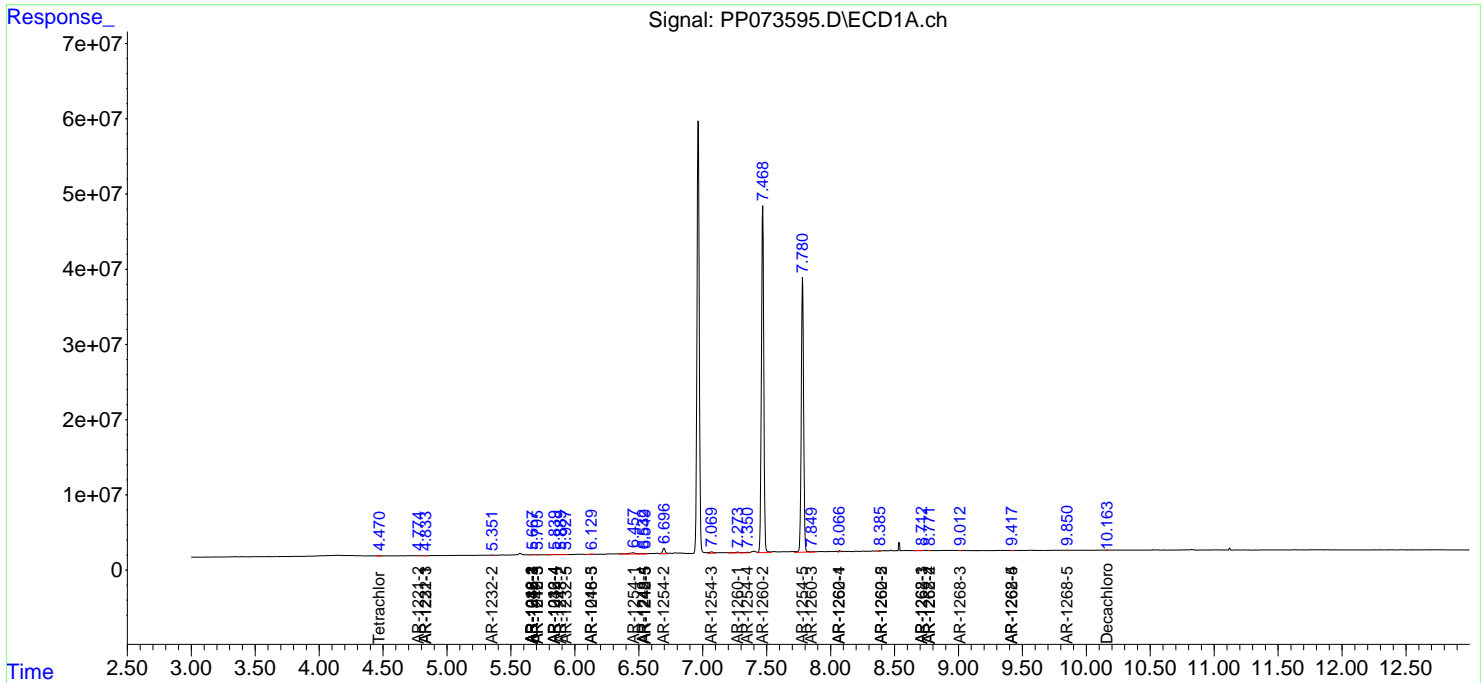
(f)=RT Delta > 1/2 Window (#)=Amounts differ by > 25% (m)=manual int.

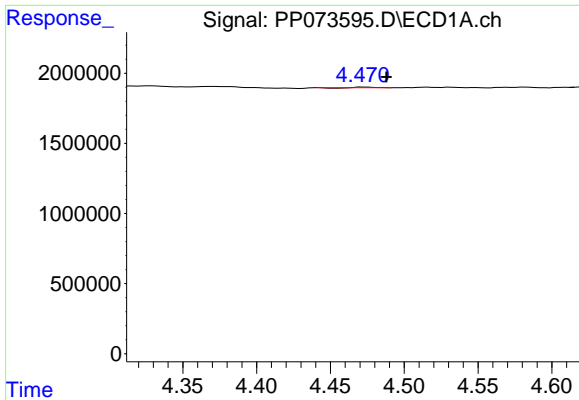
Data Path : Z:\pestpcbsrv\HPCHEM1\ECD_P\Data\PP070925\
 Data File : PP073595.D
 Signal(s) : Signal #1: ECD1A.ch Signal #2: ECD2B.ch
 Acq On : 08 Jul 2025 10:45
 Operator : YP\AJ
 Sample : DDT ANALOGUE
 Misc :
 ALS Vial : 8 Sample Multiplier: 1

Instrument :
 ECD_P
ClientSampleId :
 DDT ANALOGUE

Integration File signal 1: autoint1.e
 Integration File signal 2: autoint2.e
 Quant Time: Jul 08 11:43:40 2025
 Quant Method : Z:\pestpcbsrv\HPCHEM1\ECD_P\methods\PP070825.M
 Quant Title : GC EXTRACTABLES
 QLast Update : Tue Jul 08 08:35:32 2025
 Response via : Initial Calibration
 Integrator: ChemStation

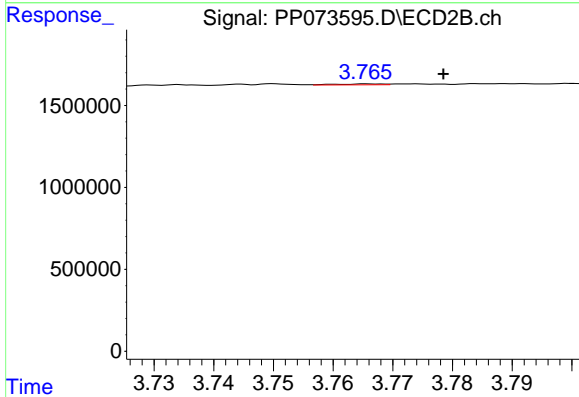
Volume Inj. : 2 µl
 Signal #1 Phase : ZB-MR1 Signal #2 Phase: ZB-MR2
 Signal #1 Info : 30Mx0.32mmx 0.50µ Signal #2 Info : 30M x 0.32mm x 0.25µm



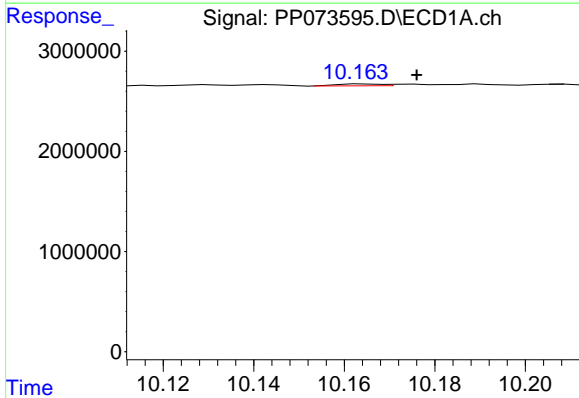


#1 Tetrachloro-m-xylene
 R.T.: 4.472 min
 Delta R.T.: -0.016 min
 Response: 16223
 Conc: 0.01 ng/ml

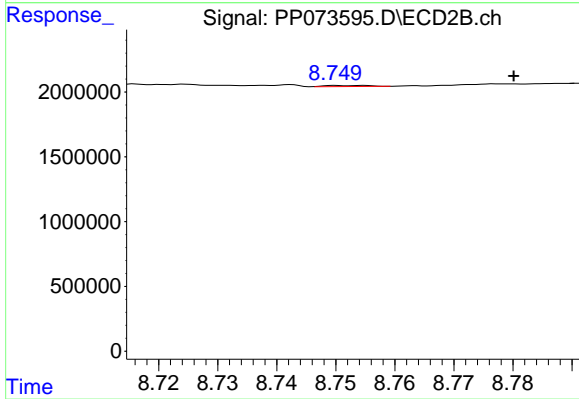
Instrument :
 ECD_P
 ClientSampleId :
 DDT ANALOGUE



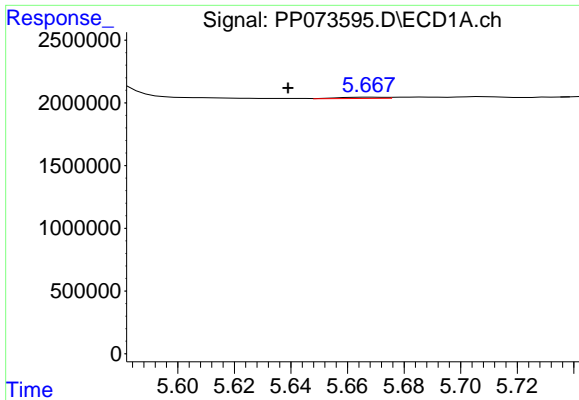
#1 Tetrachloro-m-xylene
 R.T.: 3.766 min
 Delta R.T.: -0.013 min
 Response: 28488
 Conc: 0.02 ng/ml



#2 Decachlorobiphenyl
 R.T.: 10.164 min
 Delta R.T.: -0.012 min
 Response: 124896
 Conc: 0.11 ng/ml



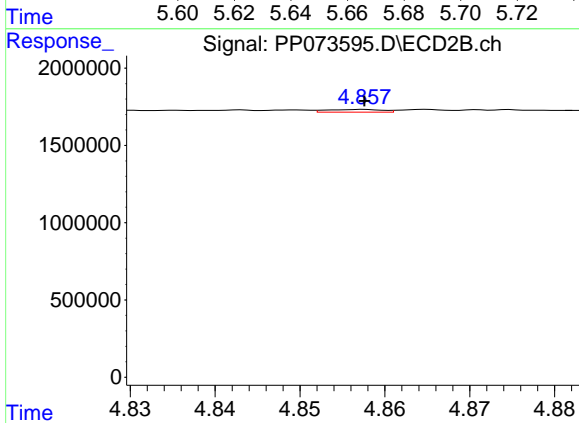
#2 Decachlorobiphenyl
 R.T.: 8.754 min
 Delta R.T.: -0.026 min
 Response: 42030
 Conc: 0.03 ng/ml



#3 AR-1016-1

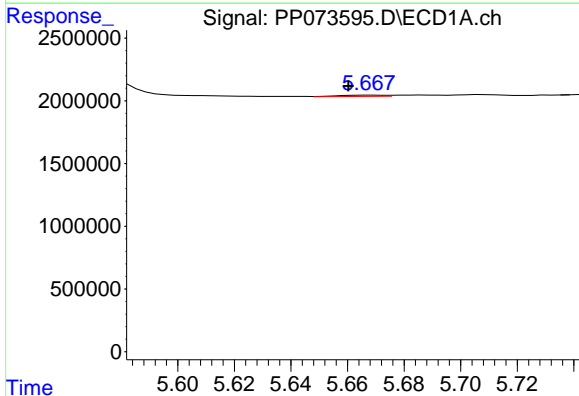
R.T.: 5.668 min
 Delta R.T.: 0.029 min
 Response: 118283
 Conc: 2.49 ng/ml

Instrument :
 ECD_P
 ClientSampleId :
 DDT ANALOGUE



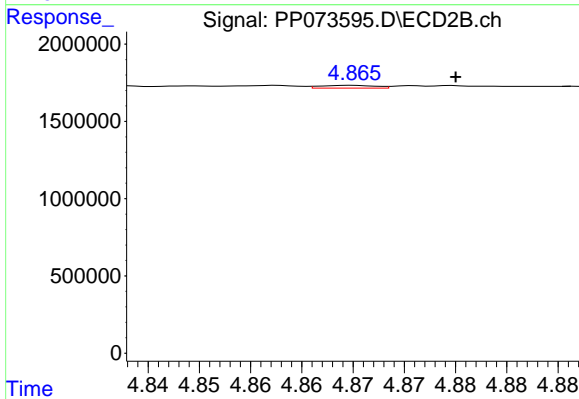
#3 AR-1016-1

R.T.: 4.858 min
 Delta R.T.: 0.000 min
 Response: 81413
 Conc: 1.19 ng/ml



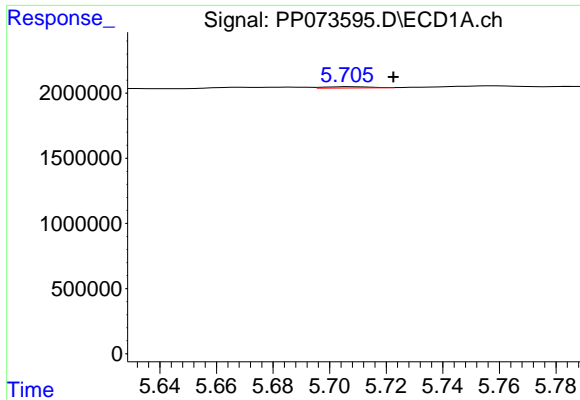
#4 AR-1016-2

R.T.: 5.668 min
 Delta R.T.: 0.008 min
 Response: 118283
 Conc: 1.66 ng/ml



#4 AR-1016-2

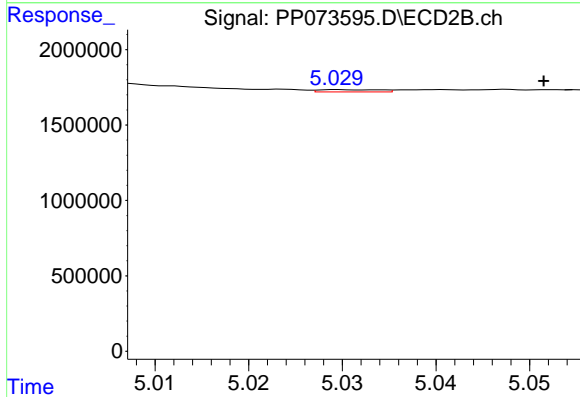
R.T.: 4.865 min
 Delta R.T.: -0.010 min
 Response: 65911
 Conc: 0.65 ng/ml



#5 AR-1016-3

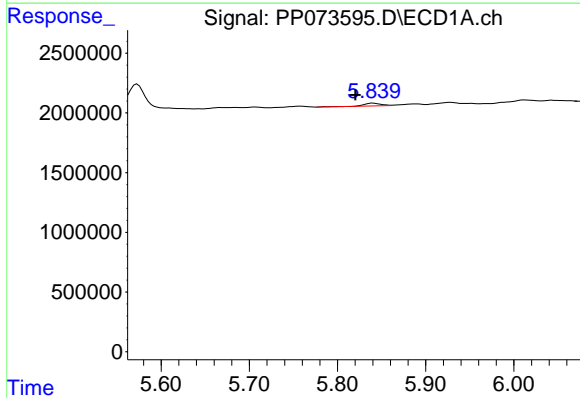
R.T.: 5.707 min
 Delta R.T.: -0.015 min
 Response: 100955
 Conc: 2.31 ng/ml

Instrument :
 ECD_P
 ClientSampleId :
 DDT ANALOGUE



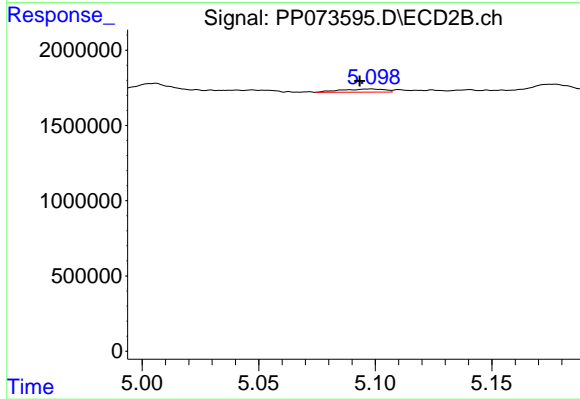
#5 AR-1016-3

R.T.: 5.030 min
 Delta R.T.: -0.022 min
 Response: 70118
 Conc: 1.30 ng/ml



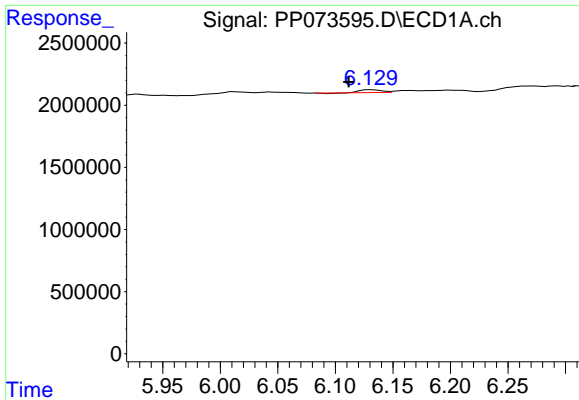
#6 AR-1016-4

R.T.: 5.840 min
 Delta R.T.: 0.020 min
 Response: 297501
 Conc: 8.28 ng/ml



#6 AR-1016-4

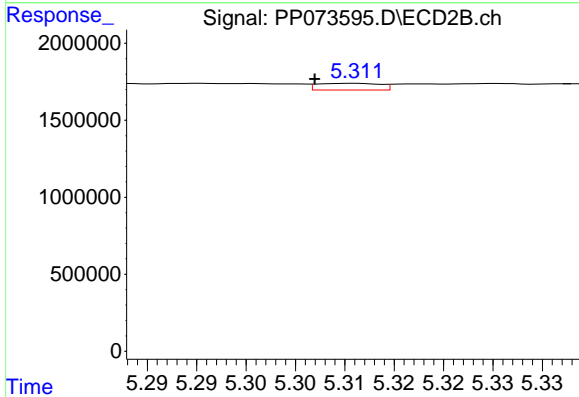
R.T.: 5.099 min
 Delta R.T.: 0.005 min
 Response: 274693
 Conc: 6.26 ng/ml



#7 AR-1016-5

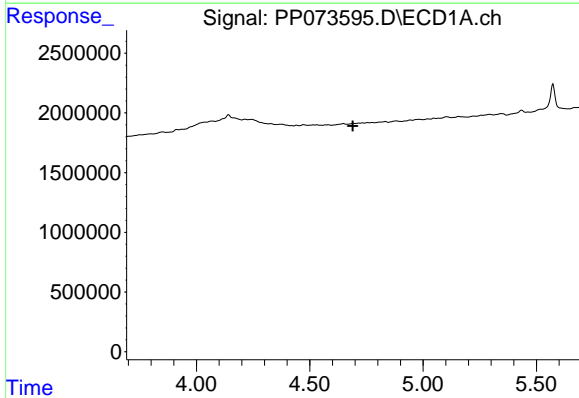
R.T.: 6.130 min
 Delta R.T.: 0.019 min
 Response: 287244
 Conc: 9.17 ng/ml

Instrument : ECD_P
 ClientSampleId : DDT ANALOGUE



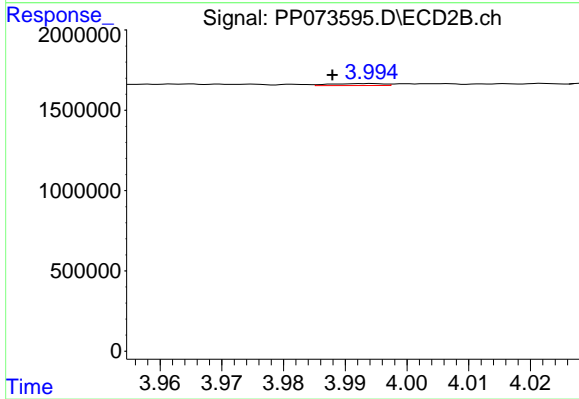
#7 AR-1016-5

R.T.: 5.311 min
 Delta R.T.: 0.004 min
 Response: 191246
 Conc: 3.50 ng/ml



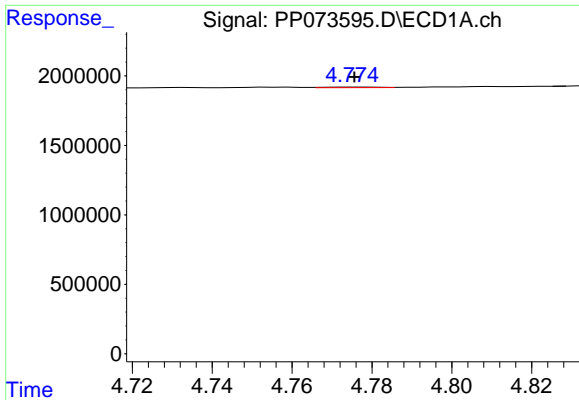
#8 AR-1221-1

R.T.: 4.694 min
 Delta R.T.: 0.004 min
 Response: -49103
 Conc: N.D.



#8 AR-1221-1

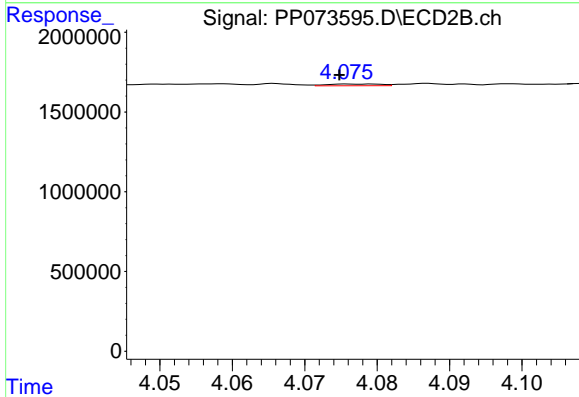
R.T.: 3.994 min
 Delta R.T.: 0.006 min
 Response: 74213
 Conc: 2.74 ng/ml



#9 AR-1221-2

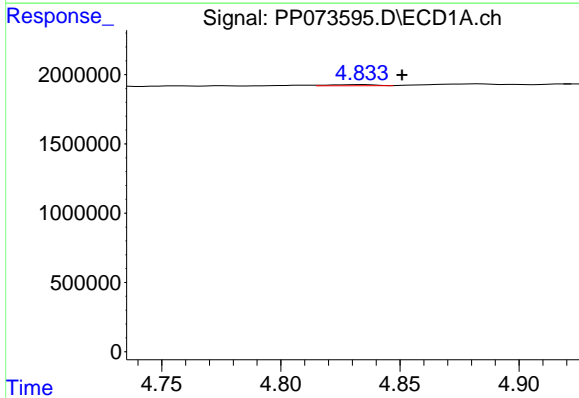
R.T.: 4.776 min
 Delta R.T.: 0.000 min
 Response: 32234
 Conc: 2.39 ng/ml

Instrument :
 ECD_P
 ClientSampleId :
 DDT ANALOGUE



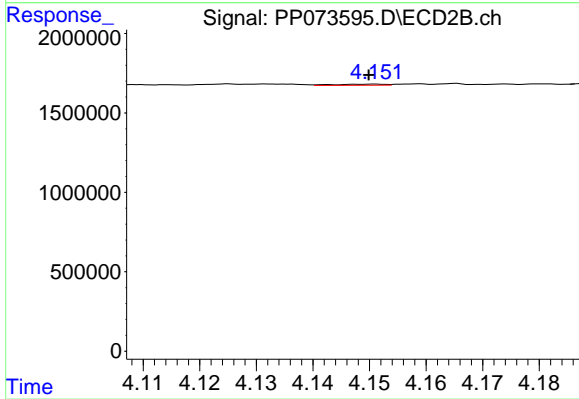
#9 AR-1221-2

R.T.: 4.079 min
 Delta R.T.: 0.005 min
 Response: 53821
 Conc: 2.64 ng/ml



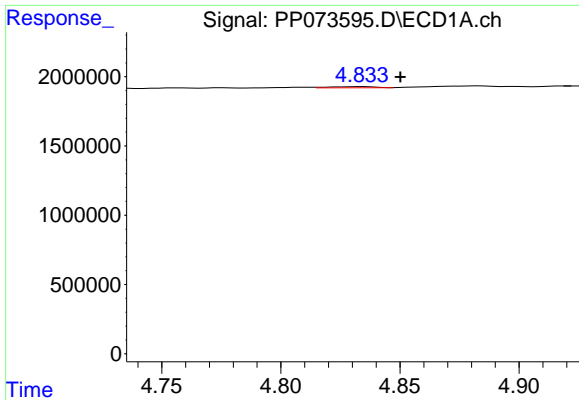
#10 AR-1221-3

R.T.: 4.834 min
 Delta R.T.: -0.017 min
 Response: 109358
 Conc: 2.63 ng/ml



#10 AR-1221-3

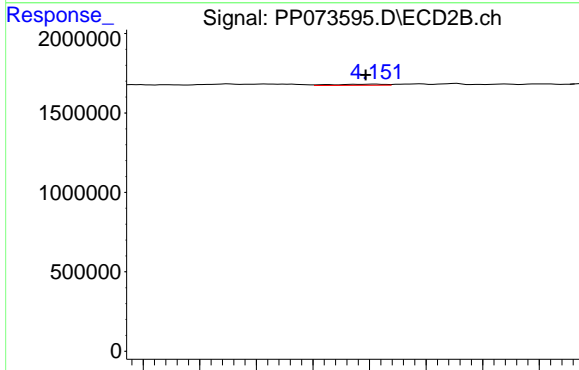
R.T.: 4.151 min
 Delta R.T.: 0.001 min
 Response: 44835
 Conc: 0.73 ng/ml



#11 AR-1232-1

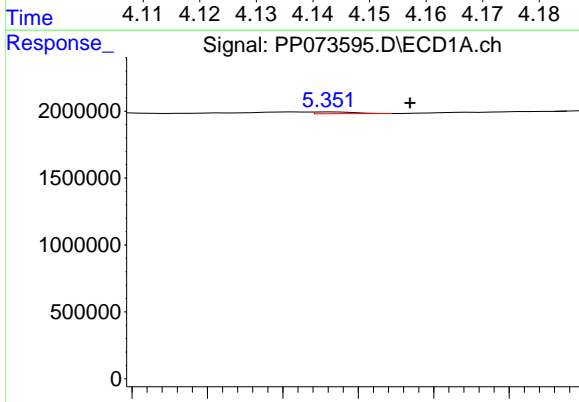
R.T.: 4.834 min
 Delta R.T.: -0.016 min
 Response: 109358
 Conc: 3.35 ng/ml

Instrument :
 ECD_P
 ClientSampleId :
 DDT ANALOGUE



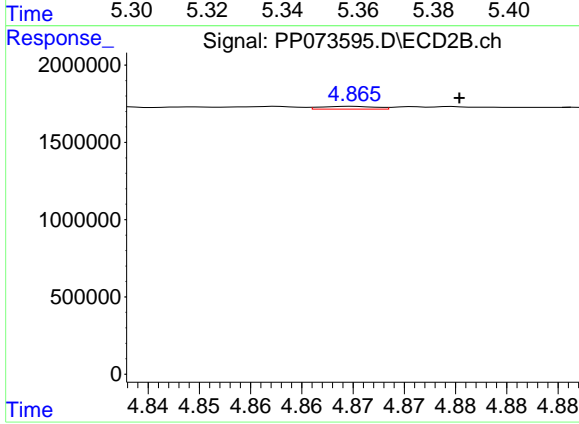
#11 AR-1232-1

R.T.: 4.151 min
 Delta R.T.: 0.002 min
 Response: 44835
 Conc: 0.96 ng/ml



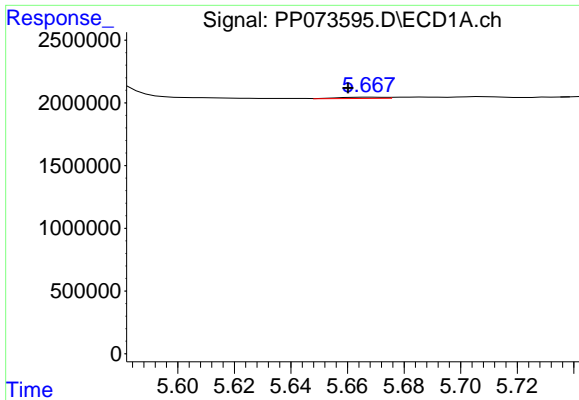
#12 AR-1232-2

R.T.: 5.353 min
 Delta R.T.: -0.021 min
 Response: 100418
 Conc: 6.18 ng/ml



#12 AR-1232-2

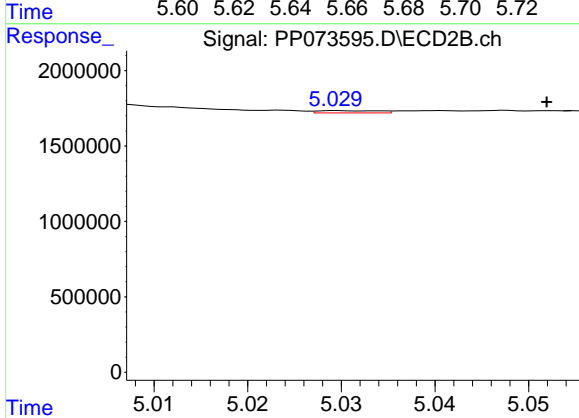
R.T.: 4.865 min
 Delta R.T.: -0.010 min
 Response: 65911
 Conc: 1.38 ng/ml



#13 AR-1232-3

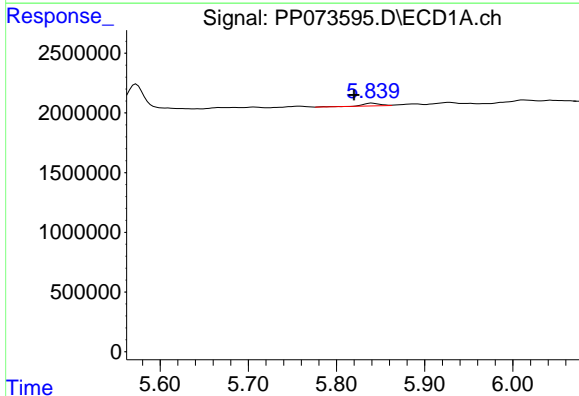
R.T.: 5.668 min
 Delta R.T.: 0.008 min
 Response: 118283
 Conc: 3.59 ng/ml

Instrument :
 ECD_P
 ClientSampleId :
 DDT ANALOGUE



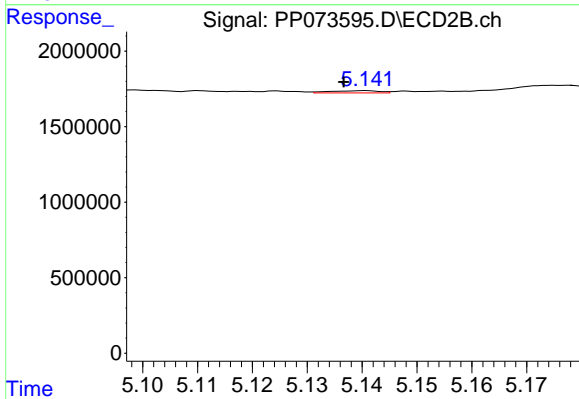
#13 AR-1232-3

R.T.: 5.030 min
 Delta R.T.: -0.022 min
 Response: 70118
 Conc: 2.80 ng/ml



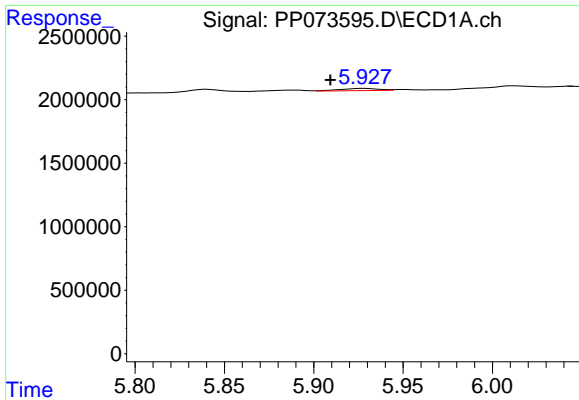
#14 AR-1232-4

R.T.: 5.840 min
 Delta R.T.: 0.020 min
 Response: 297501
 Conc: 18.09 ng/ml



#14 AR-1232-4

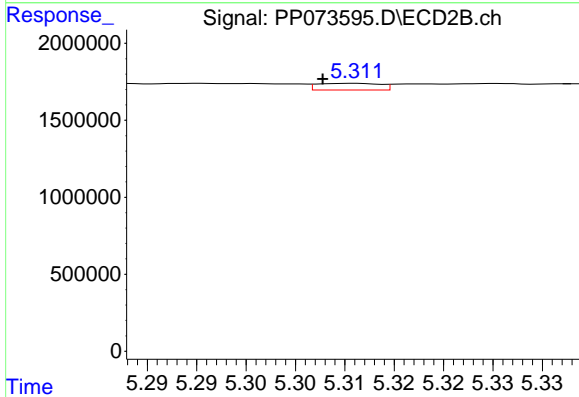
R.T.: 5.141 min
 Delta R.T.: 0.004 min
 Response: 91579
 Conc: 4.23 ng/ml



#15 AR-1232-5

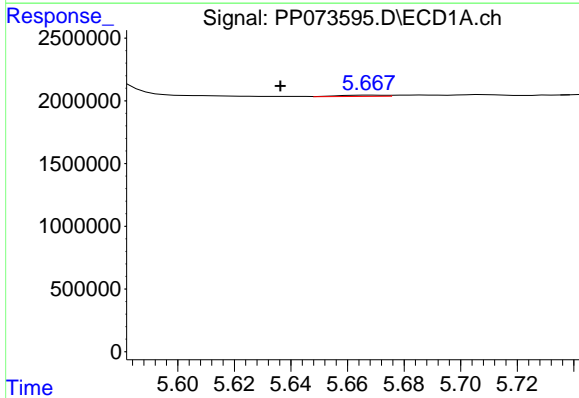
R.T.: 5.928 min
 Delta R.T.: 0.019 min
 Response: 257955
 Conc: 24.40 ng/ml

Instrument :
 ECD_P
 ClientSampleId :
 DDT ANALOGUE



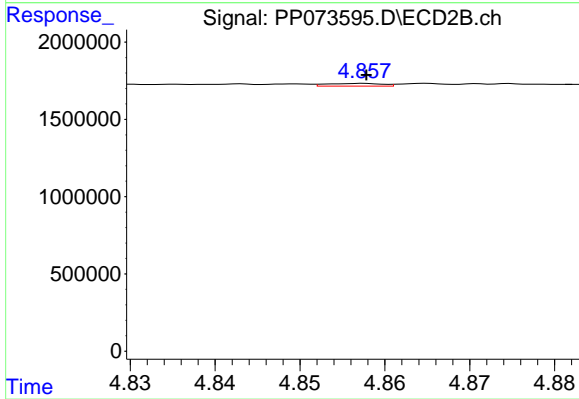
#15 AR-1232-5

R.T.: 5.311 min
 Delta R.T.: 0.003 min
 Response: 191246
 Conc: 8.48 ng/ml



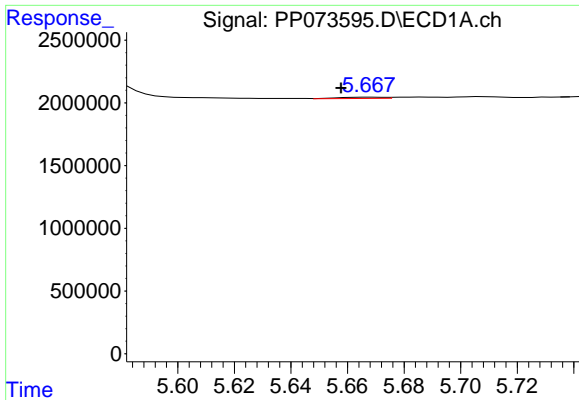
#16 AR-1242-1

R.T.: 5.668 min
 Delta R.T.: 0.032 min
 Response: 118283
 Conc: 3.10 ng/ml



#16 AR-1242-1

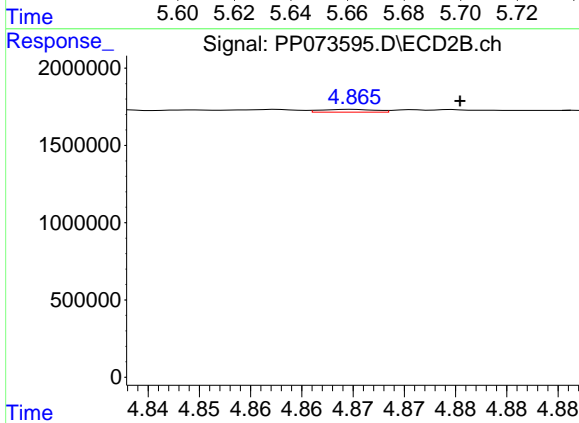
R.T.: 4.858 min
 Delta R.T.: 0.000 min
 Response: 81413
 Conc: 1.41 ng/ml



#17 AR-1242-2

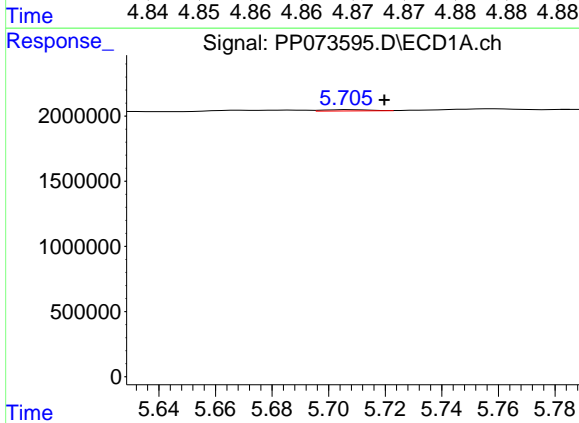
R.T.: 5.668 min
 Delta R.T.: 0.011 min
 Response: 118283
 Conc: 1.98 ng/ml

Instrument :
 ECD_P
 ClientSampleId :
 DDT ANALOGUE



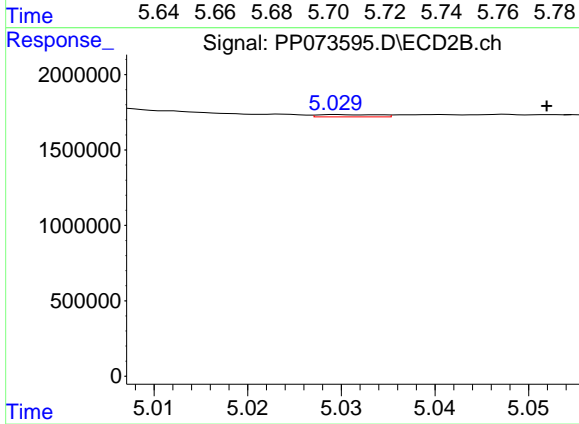
#17 AR-1242-2

R.T.: 4.865 min
 Delta R.T.: -0.010 min
 Response: 65911
 Conc: 0.76 ng/ml



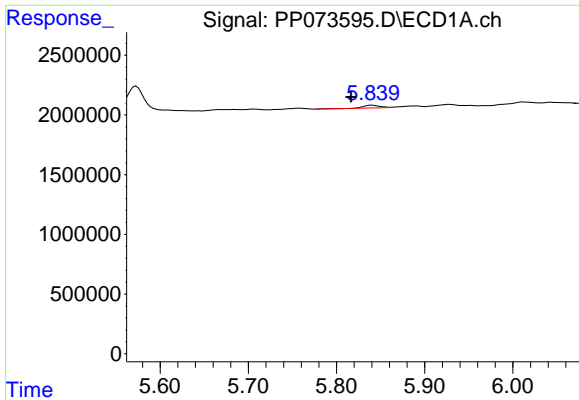
#18 AR-1242-3

R.T.: 5.707 min
 Delta R.T.: -0.012 min
 Response: 100955
 Conc: 2.76 ng/ml



#18 AR-1242-3

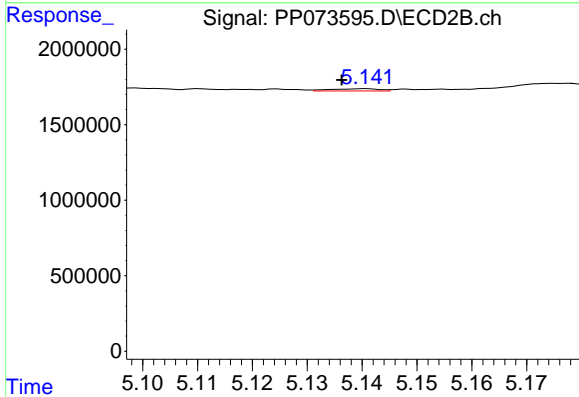
R.T.: 5.030 min
 Delta R.T.: -0.022 min
 Response: 70118
 Conc: 1.53 ng/ml



#19 AR-1242-4

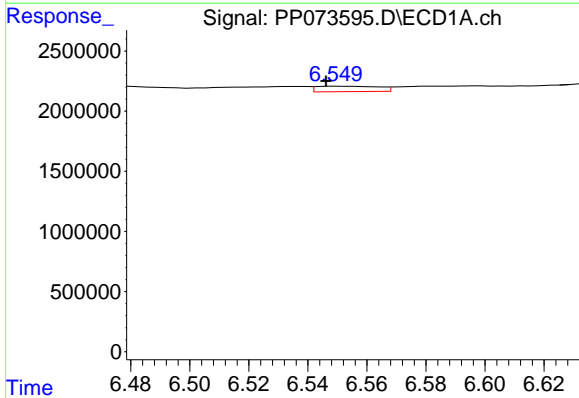
R.T.: 5.840 min
 Delta R.T.: 0.024 min
 Response: 297501
 Conc: 9.26 ng/ml

Instrument :
 ECD_P
 ClientSampleId :
 DDT ANALOGUE



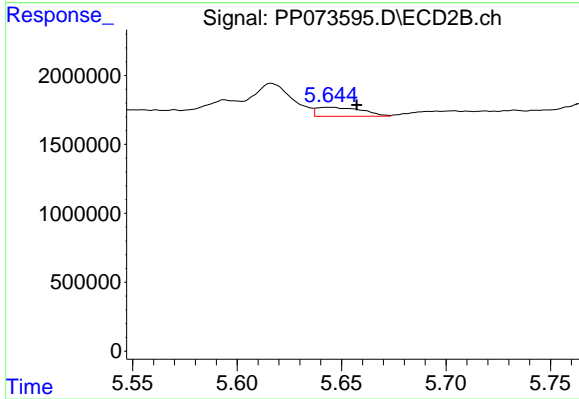
#19 AR-1242-4

R.T.: 5.141 min
 Delta R.T.: 0.004 min
 Response: 91579
 Conc: 2.07 ng/ml



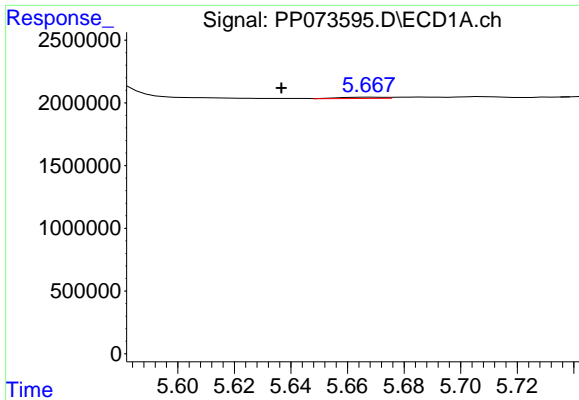
#20 AR-1242-5

R.T.: 6.551 min
 Delta R.T.: 0.004 min
 Response: 659598
 Conc: 20.15 ng/ml



#20 AR-1242-5

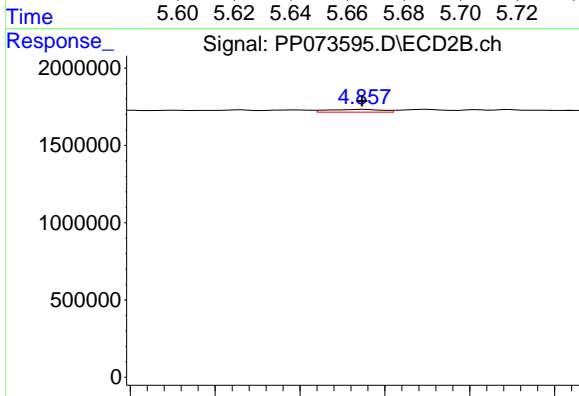
R.T.: 5.644 min
 Delta R.T.: -0.013 min
 Response: 988727
 Conc: 17.90 ng/ml



#21 AR-1248-1

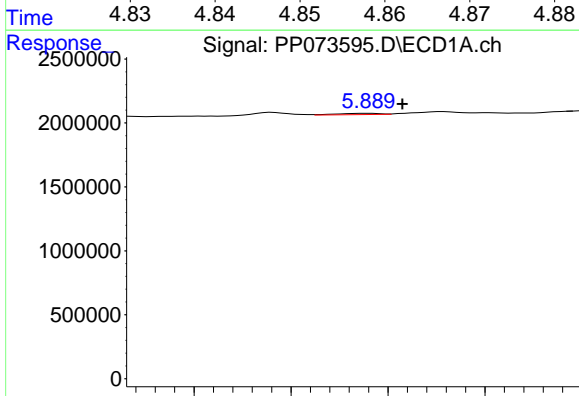
R.T.: 5.668 min
 Delta R.T.: 0.032 min
 Response: 118283
 Conc: 3.83 ng/ml

Instrument :
 ECD_P
 ClientSampleId :
 DDT ANALOGUE



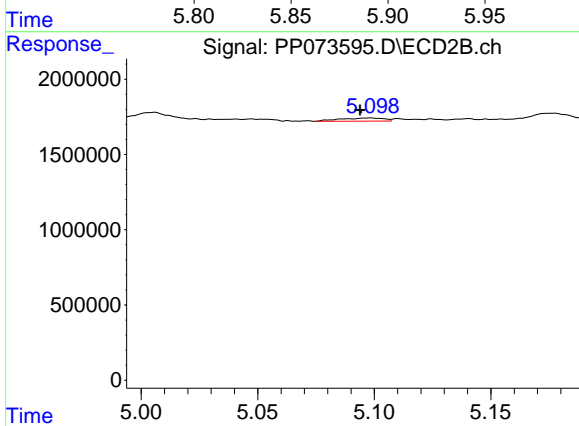
#21 AR-1248-1

R.T.: 4.858 min
 Delta R.T.: 0.000 min
 Response: 81413
 Conc: 1.81 ng/ml



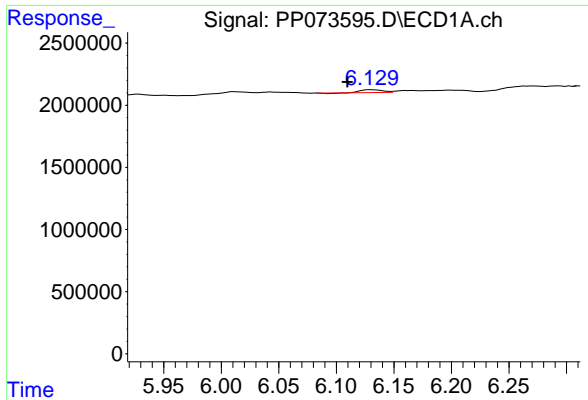
#22 AR-1248-2

R.T.: 5.890 min
 Delta R.T.: -0.018 min
 Response: 148215
 Conc: 3.71 ng/ml



#22 AR-1248-2

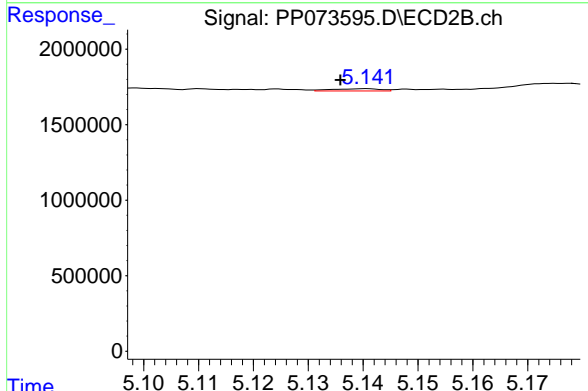
R.T.: 5.099 min
 Delta R.T.: 0.005 min
 Response: 274693
 Conc: 4.46 ng/ml



#23 AR-1248-3

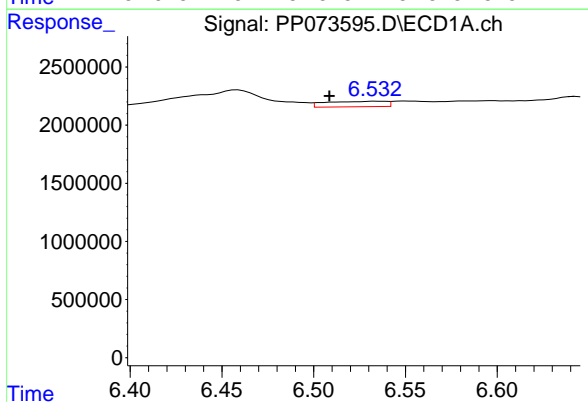
R.T.: 6.130 min
 Delta R.T.: 0.021 min
 Response: 287244
 Conc: 6.47 ng/ml

Instrument : ECD_P
 ClientSampleId : DDT ANALOGUE



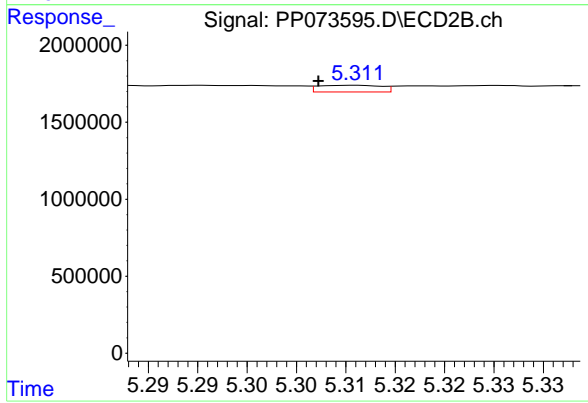
#23 AR-1248-3

R.T.: 5.141 min
 Delta R.T.: 0.005 min
 Response: 91579
 Conc: 1.43 ng/ml



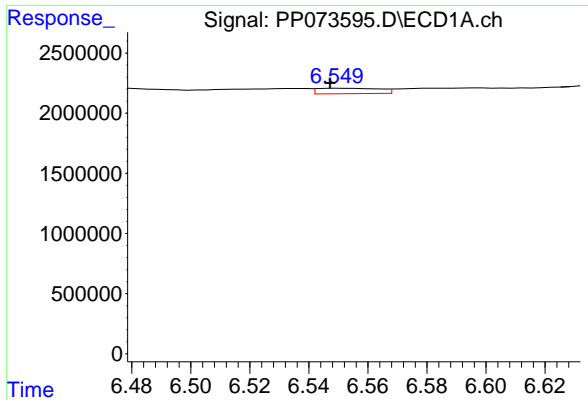
#24 AR-1248-4

R.T.: 6.534 min
 Delta R.T.: 0.025 min
 Response: 1071077
 Conc: 19.45 ng/ml



#24 AR-1248-4

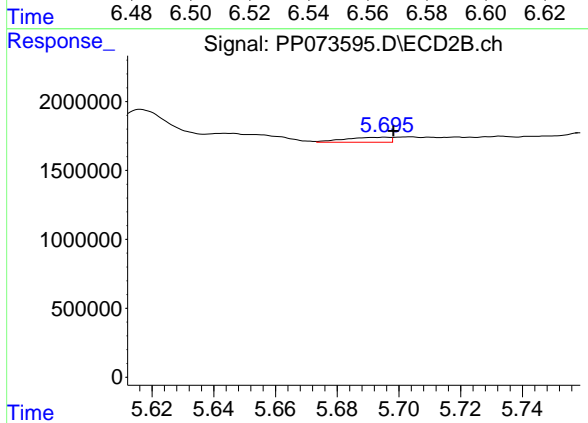
R.T.: 5.311 min
 Delta R.T.: 0.004 min
 Response: 191246
 Conc: 2.54 ng/ml



#25 AR-1248-5

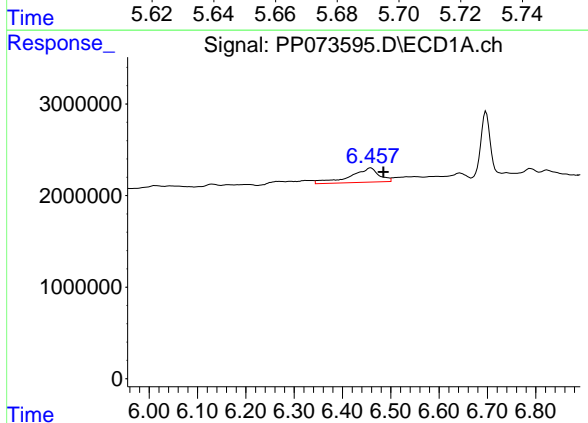
R.T.: 6.551 min
 Delta R.T.: 0.003 min
 Response: 659598
 Conc: 12.26 ng/ml

Instrument :
 ECD_P
 ClientSampleId :
 DDT ANALOGUE



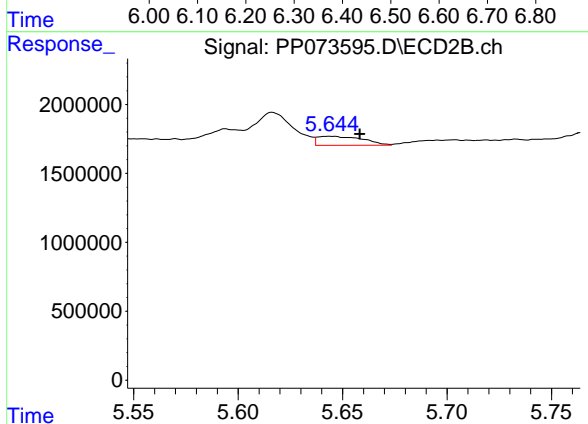
#25 AR-1248-5

R.T.: 5.696 min
 Delta R.T.: -0.003 min
 Response: 366678
 Conc: 4.92 ng/ml



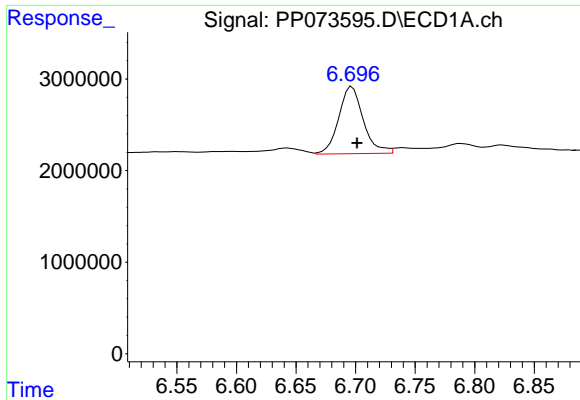
#26 AR-1254-1

R.T.: 6.459 min
 Delta R.T.: -0.026 min
 Response: 6502451
 Conc: 121.34 ng/ml



#26 AR-1254-1

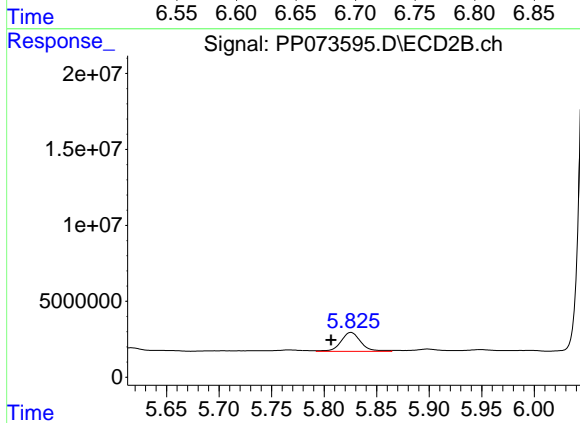
R.T.: 5.644 min
 Delta R.T.: -0.014 min
 Response: 988727
 Conc: 8.52 ng/ml



#27 AR-1254-2

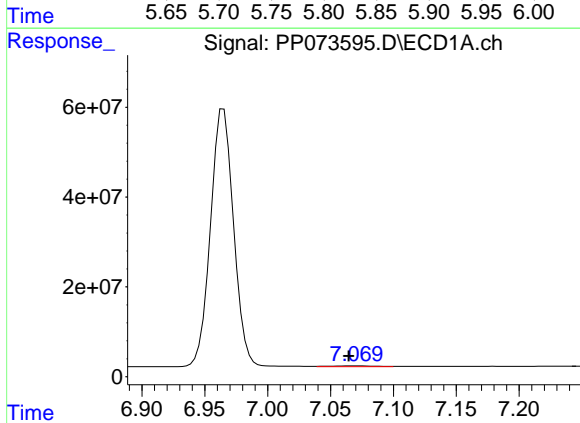
R.T.: 6.697 min
 Delta R.T.: -0.004 min
 Response: 10496187
 Conc: 126.02 ng/ml

Instrument :
 ECD_P
 ClientSampleId :
 DDT ANALOGUE



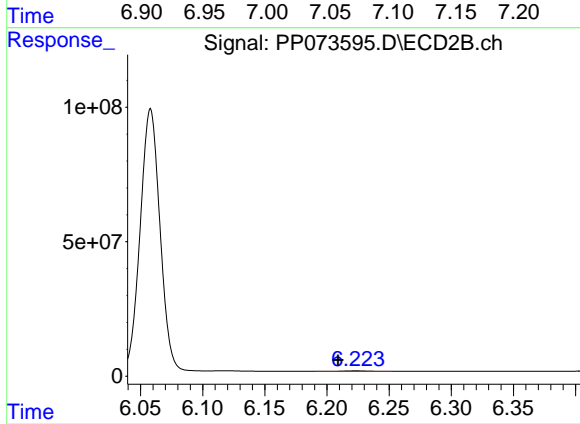
#27 AR-1254-2

R.T.: 5.826 min
 Delta R.T.: 0.019 min
 Response: 16434989
 Conc: 163.33 ng/ml



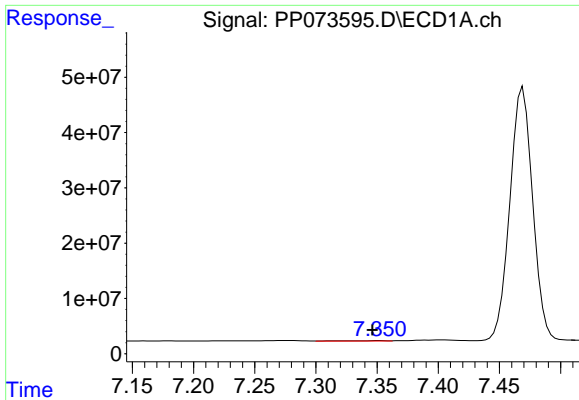
#28 AR-1254-3

R.T.: 7.070 min
 Delta R.T.: 0.006 min
 Response: 4251248
 Conc: 48.13 ng/ml



#28 AR-1254-3

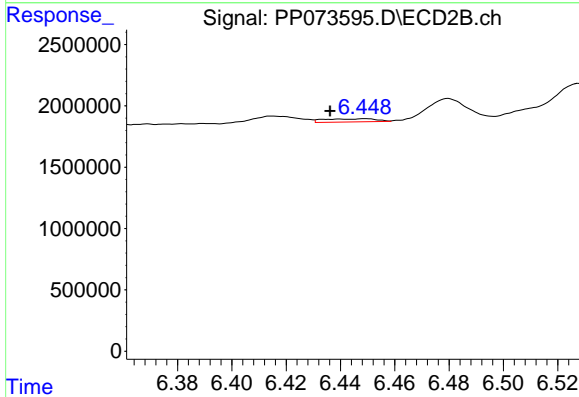
R.T.: 6.223 min
 Delta R.T.: 0.014 min
 Response: 3654308
 Conc: 23.66 ng/ml



#29 AR-1254-4

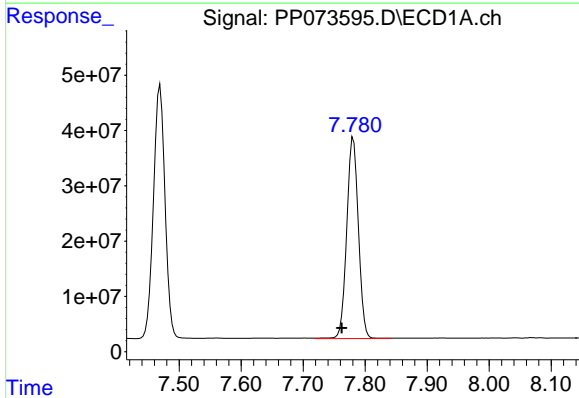
R.T.: 7.352 min
 Delta R.T.: 0.005 min
 Response: 1711278
 Conc: 21.75 ng/ml

Instrument :
 ECD_P
 ClientSampleId :
 DDT ANALOGUE



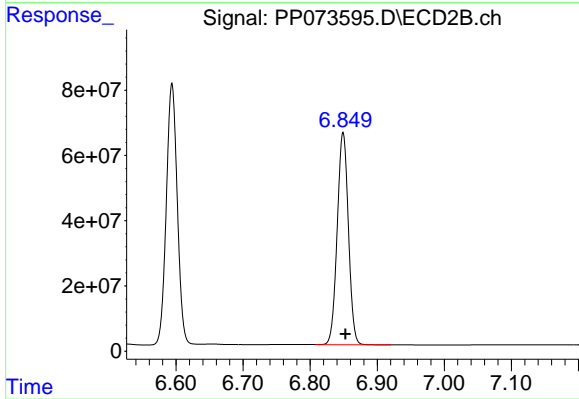
#29 AR-1254-4

R.T.: 6.449 min
 Delta R.T.: 0.013 min
 Response: 346709
 Conc: 3.67 ng/ml



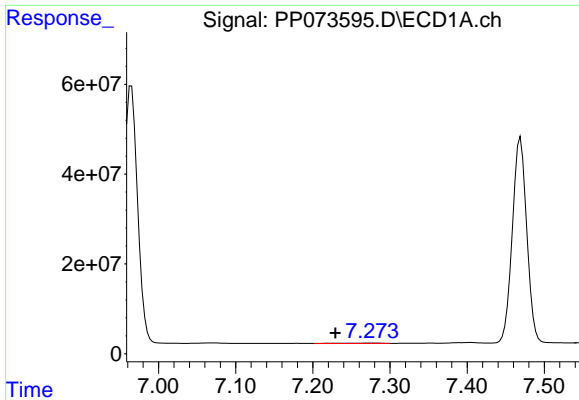
#30 AR-1254-5

R.T.: 7.781 min
 Delta R.T.: 0.019 min
 Response: 473759474
 Conc: 6429.98 ng/ml



#30 AR-1254-5

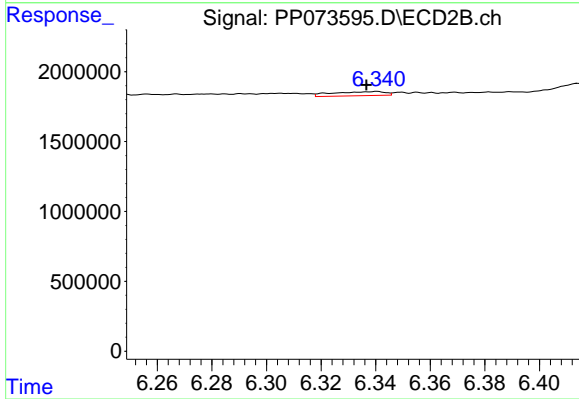
R.T.: 6.849 min
 Delta R.T.: -0.004 min
 Response: 752075076
 Conc: 5635.85 ng/ml



#31 AR-1260-1

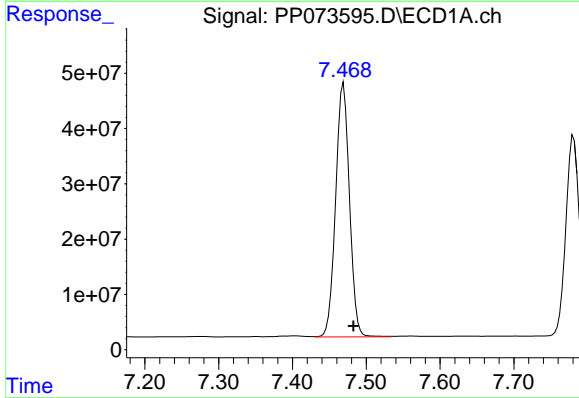
R.T.: 7.275 min
 Delta R.T.: 0.046 min
 Response: 3583979
 Conc: 60.79 ng/ml

Instrument :
 ECD_P
 ClientSampleId :
 DDT ANALOGUE



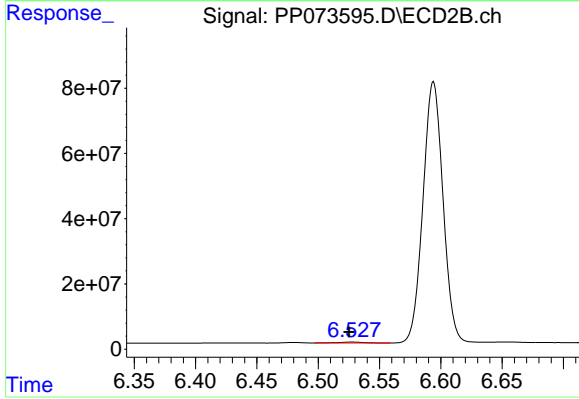
#31 AR-1260-1

R.T.: 6.340 min
 Delta R.T.: 0.004 min
 Response: 385221
 Conc: 3.95 ng/ml



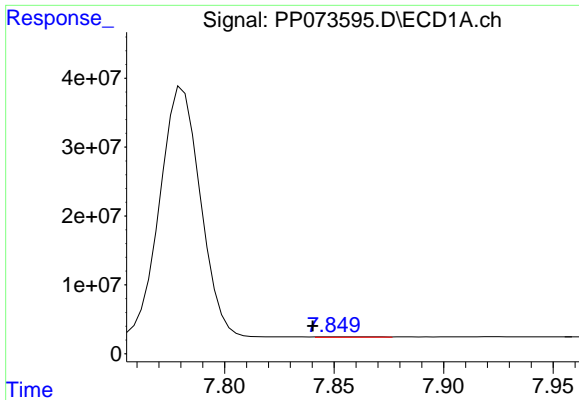
#32 AR-1260-2

R.T.: 7.469 min
 Delta R.T.: -0.014 min
 Response: 597989045
 Conc: 6239.46 ng/ml



#32 AR-1260-2

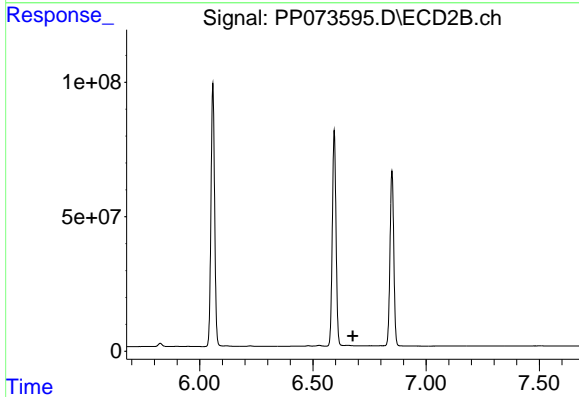
R.T.: 6.528 min
 Delta R.T.: 0.003 min
 Response: 4086043
 Conc: 33.26 ng/ml



#33 AR-1260-3

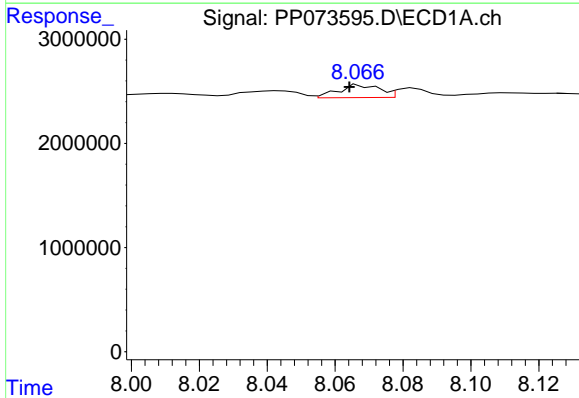
R.T.: 7.851 min
 Delta R.T.: 0.010 min
 Response: 1034466
 Conc: 14.16 ng/ml

Instrument :
 ECD_P
 ClientSampleId :
 DDT ANALOGUE



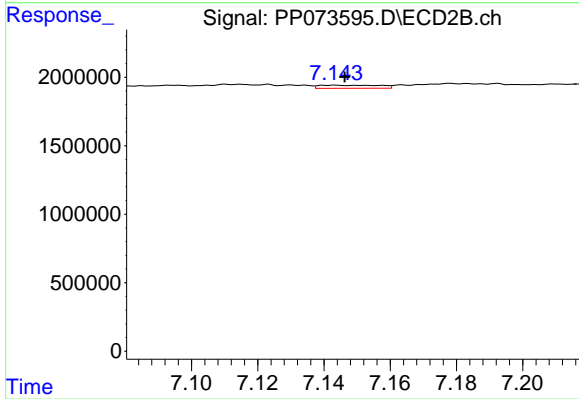
#33 AR-1260-3

R.T.: 6.654 min
 Delta R.T.: -0.023 min
 Response: -1564567
 Conc: N.D.



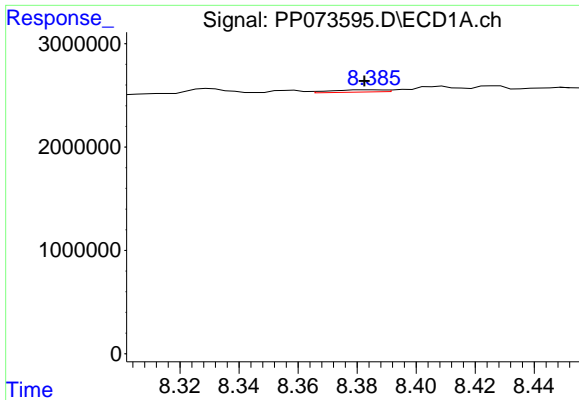
#34 AR-1260-4

R.T.: 8.068 min
 Delta R.T.: 0.003 min
 Response: 1025841
 Conc: 15.71 ng/ml



#34 AR-1260-4

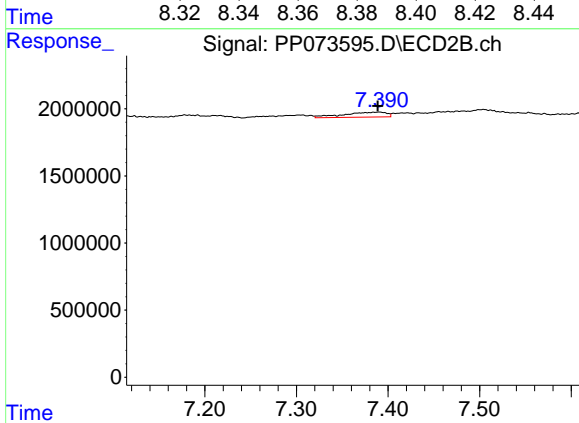
R.T.: 7.143 min
 Delta R.T.: -0.003 min
 Response: 286938
 Conc: 3.21 ng/ml



#35 AR-1260-5

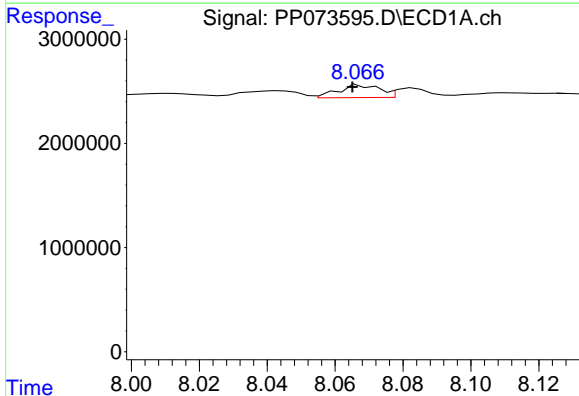
R.T.: 8.386 min
 Delta R.T.: 0.004 min
 Response: 269703
 Conc: 1.79 ng/ml

Instrument :
 ECD_P
 ClientSampleId :
 DDT ANALOGUE



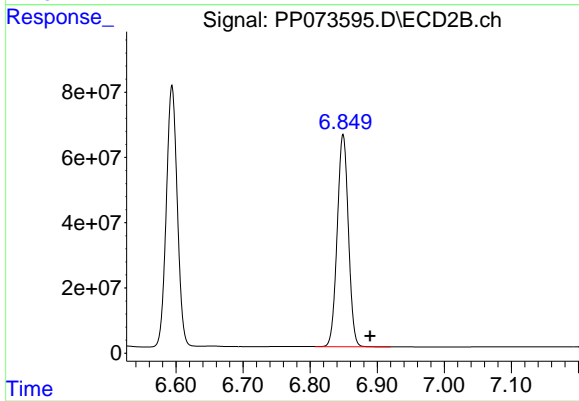
#35 AR-1260-5

R.T.: 7.391 min
 Delta R.T.: 0.002 min
 Response: 1186557
 Conc: 5.28 ng/ml



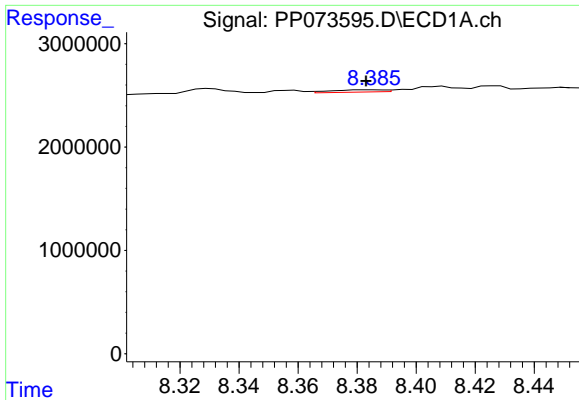
#36 AR-1262-1

R.T.: 8.068 min
 Delta R.T.: 0.002 min
 Response: 1025841
 Conc: 11.79 ng/ml



#36 AR-1262-1

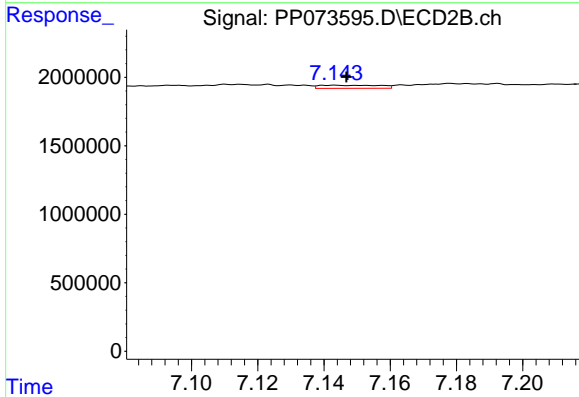
R.T.: 6.849 min
 Delta R.T.: -0.040 min
 Response: 752075076
 Conc: 5092.20 ng/ml



#37 AR-1262-2

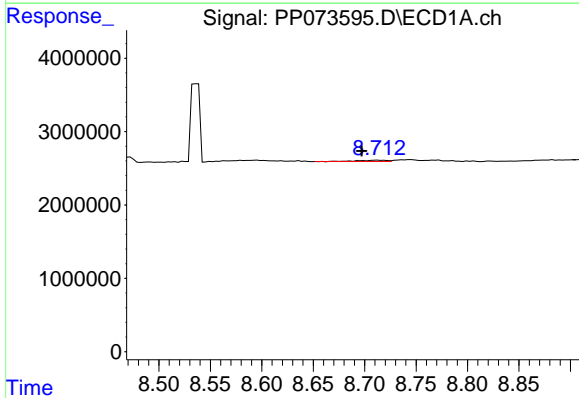
R.T.: 8.386 min
 Delta R.T.: 0.003 min
 Response: 269703
 Conc: 1.36 ng/ml

Instrument :
 ECD_P
 ClientSampleId :
 DDT ANALOGUE



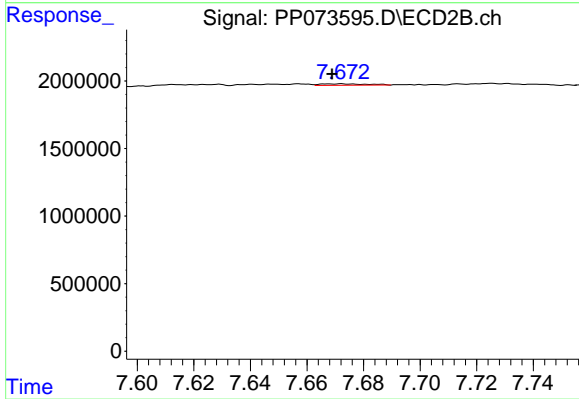
#37 AR-1262-2

R.T.: 7.143 min
 Delta R.T.: -0.003 min
 Response: 286938
 Conc: 2.24 ng/ml



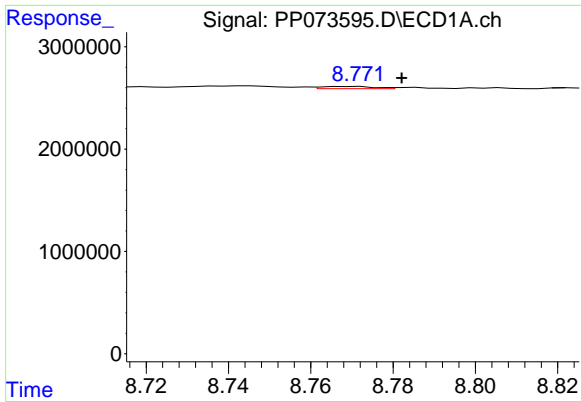
#38 AR-1262-3

R.T.: 8.713 min
 Delta R.T.: 0.016 min
 Response: 380442
 Conc: 3.03 ng/ml



#38 AR-1262-3

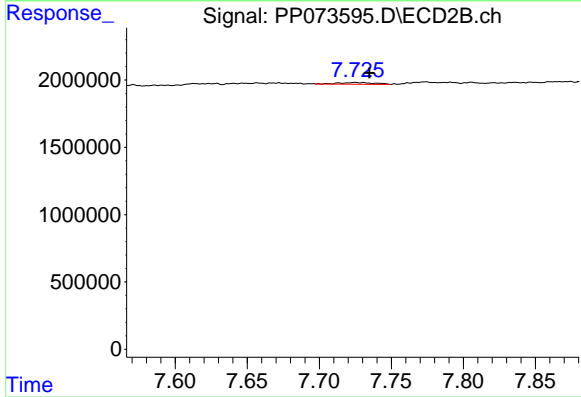
R.T.: 7.672 min
 Delta R.T.: 0.003 min
 Response: 128266
 Conc: 1.12 ng/ml



#39 AR-1262-4

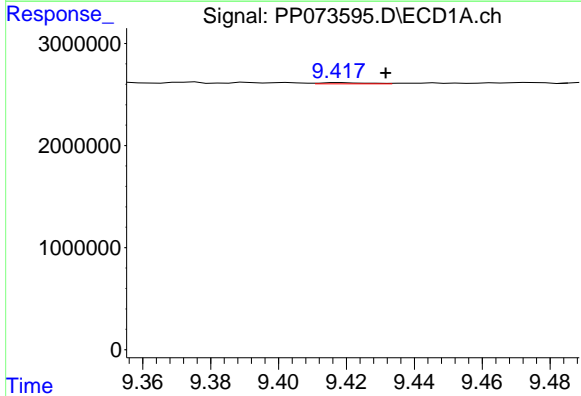
R.T.: 8.770 min
 Delta R.T.: -0.012 min
 Response: 194231
 Conc: 2.08 ng/ml

Instrument :
 ECD_P
 ClientSampleId :
 DDT ANALOGUE



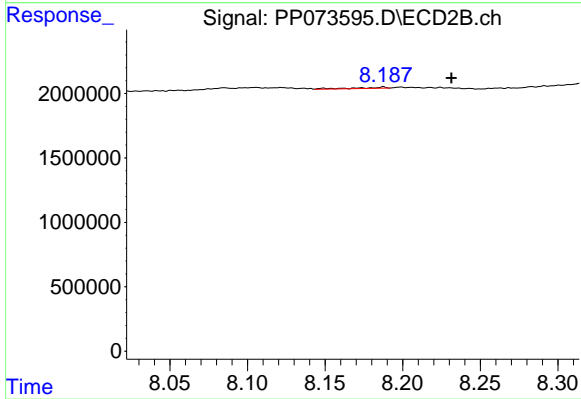
#39 AR-1262-4

R.T.: 7.725 min
 Delta R.T.: -0.010 min
 Response: 207328
 Conc: 1.13 ng/ml



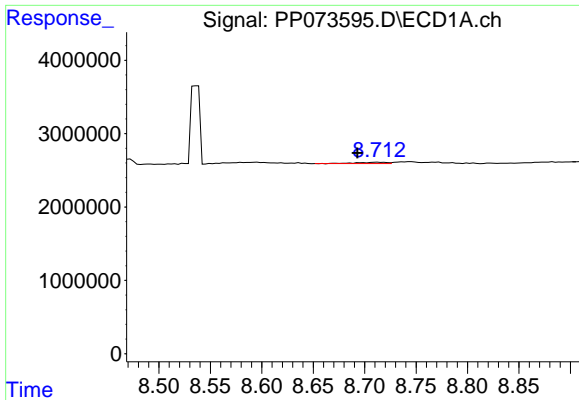
#40 AR-1262-5

R.T.: 9.418 min
 Delta R.T.: -0.013 min
 Response: 115767
 Conc: 1.83 ng/ml



#40 AR-1262-5

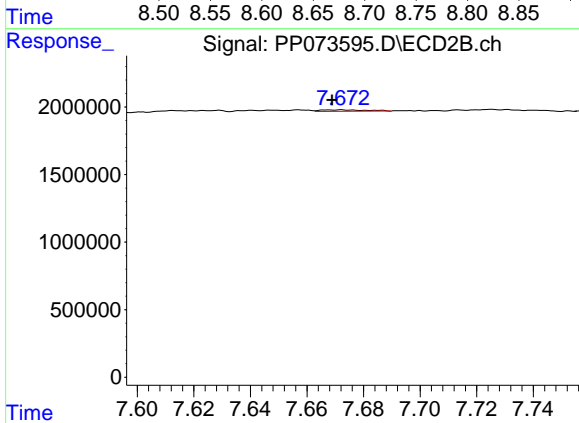
R.T.: 8.188 min
 Delta R.T.: -0.044 min
 Response: 135858
 Conc: 1.61 ng/ml



#41 AR-1268-1

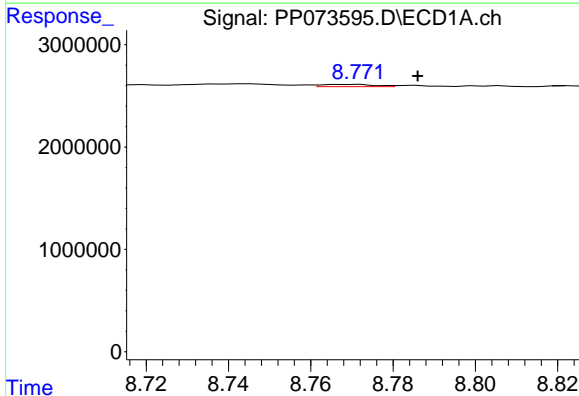
R.T.: 8.713 min
 Delta R.T.: 0.020 min
 Response: 380442
 Conc: 1.70 ng/ml

Instrument :
 ECD_P
 ClientSampleId :
 DDT ANALOGUE



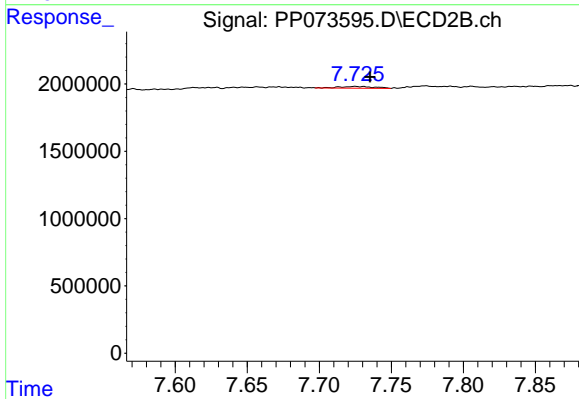
#41 AR-1268-1

R.T.: 7.672 min
 Delta R.T.: 0.003 min
 Response: 128266
 Conc: 0.42 ng/ml



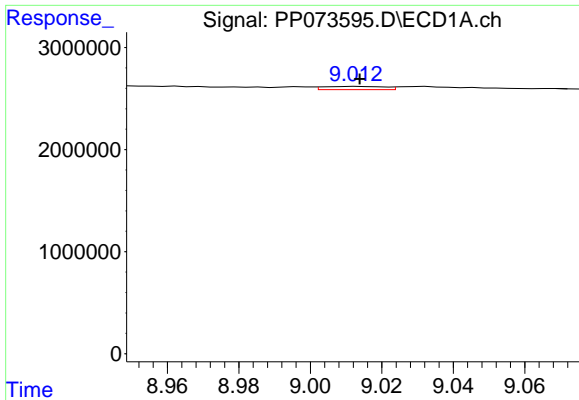
#42 AR-1268-2

R.T.: 8.770 min
 Delta R.T.: -0.016 min
 Response: 194231
 Conc: 1.02 ng/ml



#42 AR-1268-2

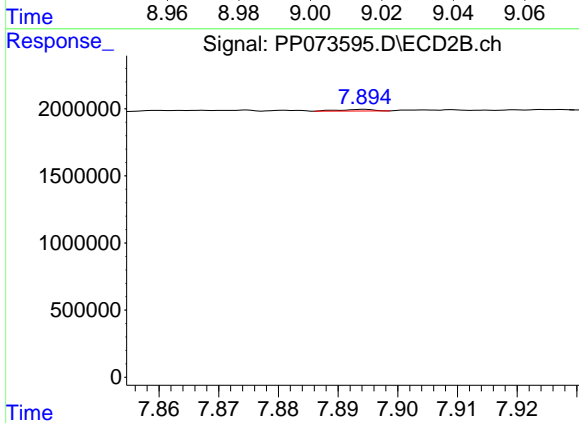
R.T.: 7.725 min
 Delta R.T.: -0.010 min
 Response: 207328
 Conc: 0.78 ng/ml



#43 AR-1268-3

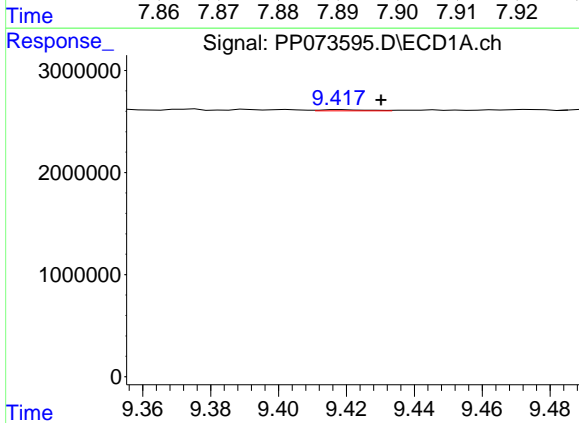
R.T.: 9.013 min
 Delta R.T.: 0.000 min
 Response: 369934
 Conc: 2.23 ng/ml

Instrument :
 ECD_P
 ClientSampleId :
 DDT ANALOGUE



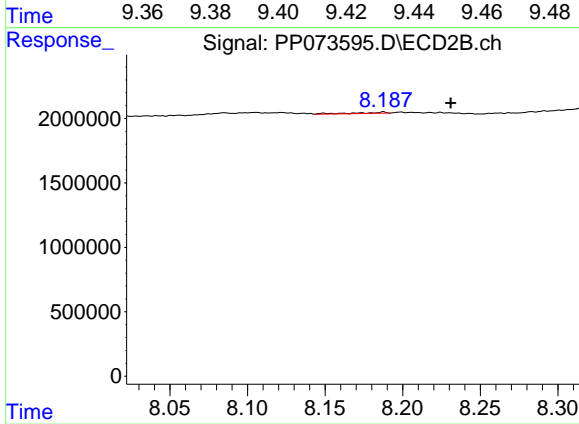
#43 AR-1268-3

R.T.: 7.894 min
 Delta R.T.: -0.042 min
 Response: 51684
 Conc: 0.23 ng/ml



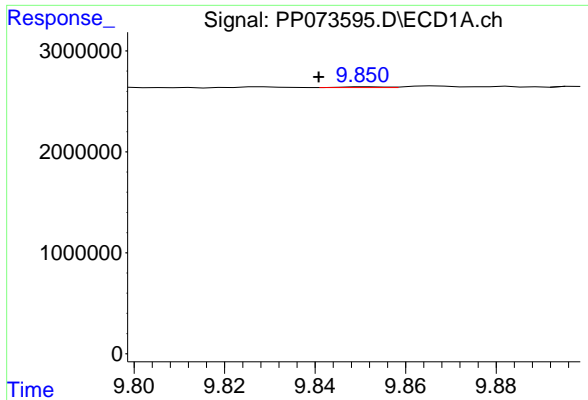
#44 AR-1268-4

R.T.: 9.418 min
 Delta R.T.: -0.012 min
 Response: 115767
 Conc: 1.66 ng/ml



#44 AR-1268-4

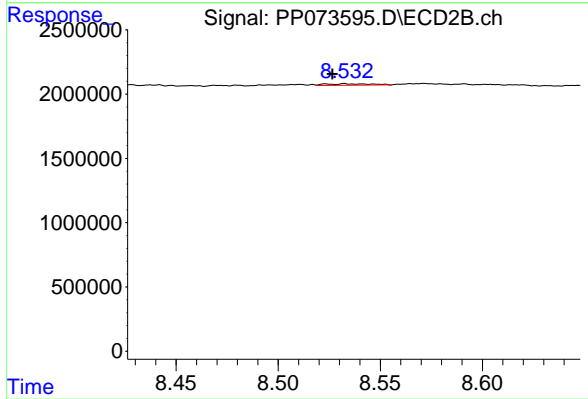
R.T.: 8.188 min
 Delta R.T.: -0.043 min
 Response: 135858
 Conc: 1.46 ng/ml



#45 AR-1268-5

R.T.: 9.852 min
Delta R.T.: 0.011 min
Response: 46443
Conc: 0.10 ng/ml

Instrument :
ECD_P
ClientSampleId :
DDT ANALOGUE



#45 AR-1268-5

R.T.: 8.533 min
Delta R.T.: 0.006 min
Response: 175650
Conc: 0.28 ng/ml