

Data Path : Z:\pestpcbsrv\HPCHEM1\ECD_P\Data\PP070925\
 Data File : PP073598.D
 Signal(s) : Signal #1: ECD1A.ch Signal #2: ECD2B.ch
 Acq On : 08 Jul 2025 11:38
 Operator : YP\AJ
 Sample : Q2476-01DL 5X
 Misc :
 ALS Vial : 11 Sample Multiplier: 1

Instrument :
 ECD_P
 ClientSampleId :
 50731DL

Integration File signal 1: autoint1.e
 Integration File signal 2: autoint2.e
 Quant Time: Jul 08 11:48:27 2025
 Quant Method : Z:\pestpcbsrv\HPCHEM1\ECD_P\methods\PP070825.M
 Quant Title : GC EXTRACTABLES
 QLast Update : Tue Jul 08 08:35:32 2025
 Response via : Initial Calibration
 Integrator: ChemStation

Volume Inj. : 2 µl
 Signal #1 Phase : ZB-MR1 Signal #2 Phase: ZB-MR2
 Signal #1 Info : 30Mx0.32mmx 0.50µ Signal #2 Info : 30M x 0.32mm x 0.25µm

Compound	RT#1	RT#2	Resp#1	Resp#2	ng/ml	ng/ml
System Monitoring Compounds						
1) SA Tetrachlo...	4.488	3.778	2837191	3931089	2.072	2.134
2) SA Decachlor...	10.171	8.780	2440414	2932457	2.237	2.216
Target Compounds						
3) L1 AR-1016-1	5.638	4.856	22029456	31083029	463.646	455.932
4) L1 AR-1016-2	5.660	4.874	33175341	44025290	465.848	432.110
5) L1 AR-1016-3	5.722	5.051	19825824	23003942	454.064	425.162
6) L1 AR-1016-4	5.820	5.093	15725374	12341849	437.477	281.258 #
7) L1 AR-1016-5	6.111	5.306	7431482	12872555	237.197	235.837
8) L2 AR-1221-1	4.707	3.991	37126	104375	2.078	3.859 #
9) L2 AR-1221-2	4.792	4.078	82275	203613	6.092	10.000 #
10) L2 AR-1221-3	4.853	4.149	409258	820726	9.837	13.356 #
11) L3 AR-1232-1	4.853	4.149	409258	820726	12.534	17.607 #
12) L3 AR-1232-2	5.374	4.874	7335968	44025290	451.314	923.740 #
13) L3 AR-1232-3	5.660	5.051	33175341	23003942	1005.513	919.091
14) L3 AR-1232-4	5.820	5.134	15725374	14390988	956.231	664.518 #
15) L3 AR-1232-5	5.909	5.306	8656311	12872555	818.923	570.505 #
16) L4 AR-1242-1	5.638	4.856	22029456	31083029	576.865	538.097
17) L4 AR-1242-2	5.660	4.874	33175341	44025290	554.012	509.233
18) L4 AR-1242-3	5.722	5.051	19825824	23003942	541.380	500.666
19) L4 AR-1242-4	5.820	5.134	15725374	14390988	489.338	325.122 #
20) L4 AR-1242-5	6.549	5.656	5162336	6279762	157.692	113.676 #
21) L5 AR-1248-1	5.638	4.856	22029456	31083029	713.608	692.351
22) L5 AR-1248-2	5.909	5.093	8656311	12341849	216.823	200.561
23) L5 AR-1248-3	6.111	5.134	7431482	14390988	167.339	224.633 #
24) L5 AR-1248-4	6.511	5.306	4030453	12872555	73.174	170.775 #
25) L5 AR-1248-5	6.549	5.697	5162336	4976893	95.971	66.723 #
26) L6 AR-1254-1	6.484	5.656	3413276	6279762	63.693	54.122
27) L6 AR-1254-2	6.705	5.804	4682373	1745410	56.218	17.346 #
28) L6 AR-1254-3	7.064	6.206	9612079	1721806	108.818	11.148 #
29) L6 AR-1254-4	7.352	6.453	1921794	695982	24.429	7.360 #
30) L6 AR-1254-5	7.781	6.842	606083	157678	8.226	1.182 #
31) L7 AR-1260-1	7.234	6.350	1743099	1511548	29.563	15.493 #
32) L7 AR-1260-2	7.501	6.507	2320057	9537448	24.208	77.643 #
33) L7 AR-1260-3	7.834	6.675	369781	108288	5.061	0.989 #
34) L7 AR-1260-4	8.073	7.146	207201	1125010	3.173	12.583 #
35) L7 AR-1260-5	8.394	7.409	309364	1088127	2.051	4.842 #
36) L8 AR-1262-1	8.073	6.874	207201	237187	2.381	1.606 #
37) L8 AR-1262-2	8.394	7.146	309364	1125010	1.562	8.801 #
38) L8 AR-1262-3	8.744f	7.674	3500565	670564	27.843	5.881 #
39) L8 AR-1262-4	8.802	7.732	533668	114258	5.722	0.621 #
40) L8 AR-1262-5	9.425	8.210	111795	45264	1.764	0.536 #
41) L9 AR-1268-1	8.744f	7.674	3500565	670564	15.682	2.182 #

Data Path : Z:\pestpcbsrv\HPCHEM1\ECD_P\Data\PP070925\
 Data File : PP073598.D
 Signal(s) : Signal #1: ECD1A.ch Signal #2: ECD2B.ch
 Acq On : 08 Jul 2025 11:38
 Operator : YP\AJ
 Sample : Q2476-01DL 5X
 Misc :
 ALS Vial : 11 Sample Multiplier: 1

Instrument :
 ECD_P
 ClientSampleId :
 50731DL

Integration File signal 1: autoint1.e
 Integration File signal 2: autoint2.e
 Quant Time: Jul 08 11:48:27 2025
 Quant Method : Z:\pestpcbsrv\HPCHEM1\ECD_P\methods\PP070825.M
 Quant Title : GC EXTRACTABLES
 QLast Update : Tue Jul 08 08:35:32 2025
 Response via : Initial Calibration
 Integrator: ChemStation

Volume Inj. : 2 µl
 Signal #1 Phase : ZB-MR1 Signal #2 Phase: ZB-MR2
 Signal #1 Info : 30Mx0.32mmx 0.50µ Signal #2 Info : 30M x 0.32mm x 0.25µm

	Compound	RT#1	RT#2	Resp#1	Resp#2	ng/ml	ng/ml
42)	L9 AR-1268-2	8.802	7.732	533668	114258	2.801	0.430 #
43)	L9 AR-1268-3	9.010	7.935	481526	260888	2.908	1.157 #
44)	L9 AR-1268-4	9.425	8.210	111795	45264	1.608	0.487 #
45)	L9 AR-1268-5	9.845	8.530	62259	101925	0.135	0.165

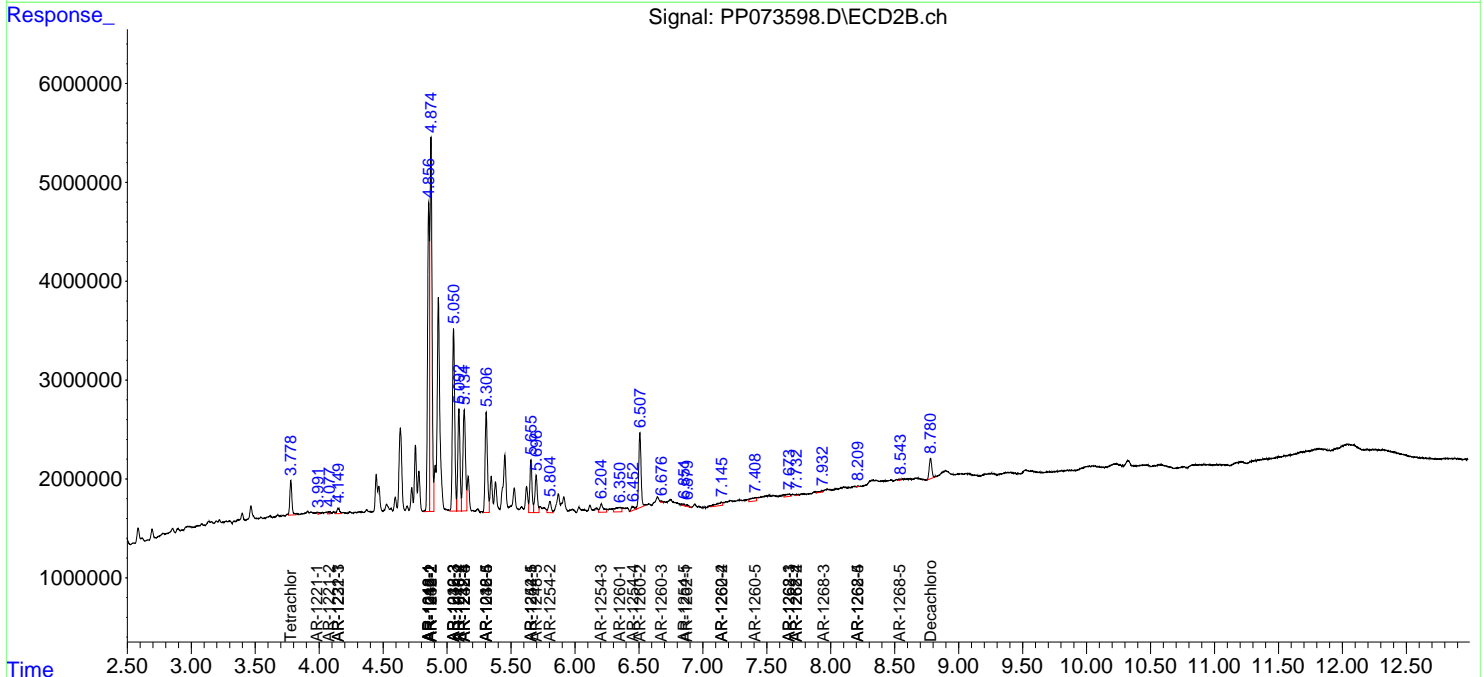
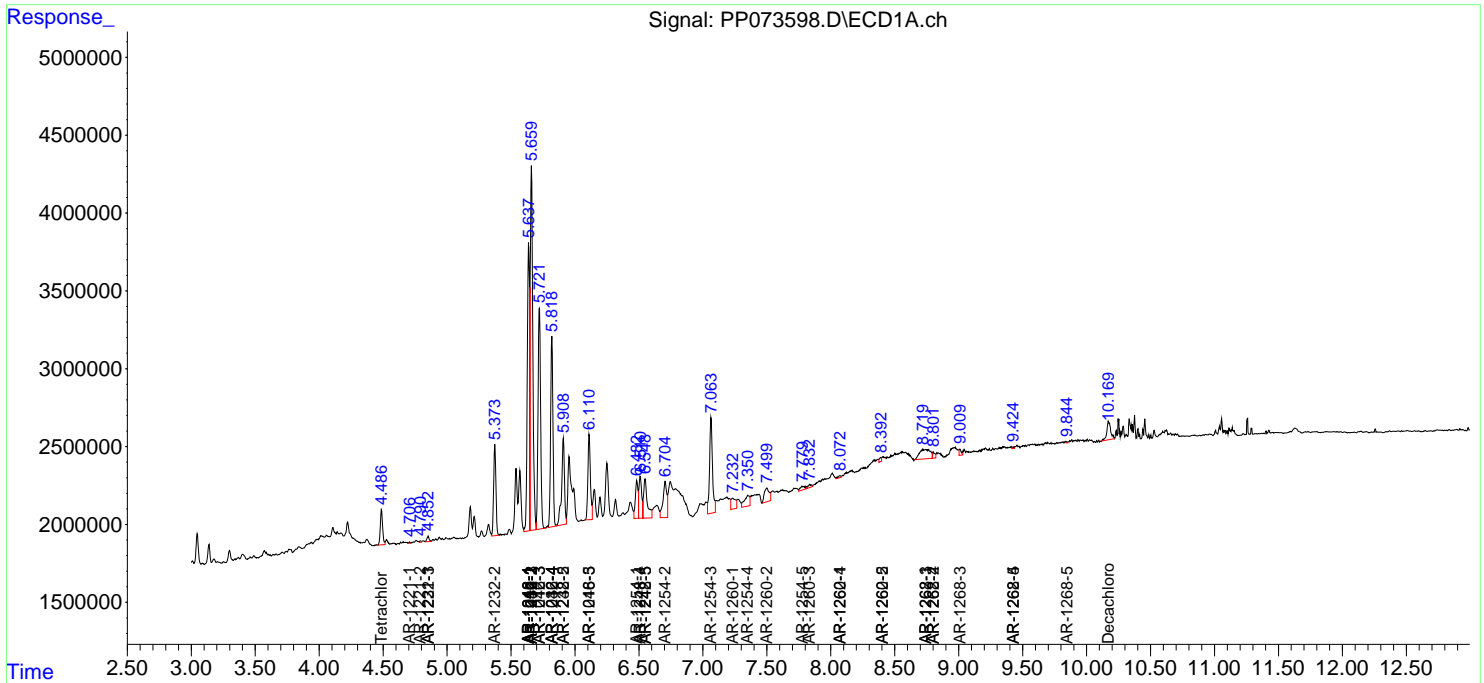
(f)=RT Delta > 1/2 Window (#)=Amounts differ by > 25% (m)=manual int.

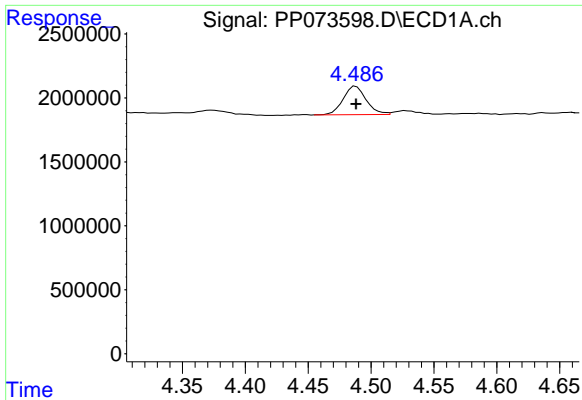
Data Path : Z:\pestpcbsrv\HPCHEM1\ECD_P\Data\PP070925\
 Data File : PP073598.D
 Signal(s) : Signal #1: ECD1A.ch Signal #2: ECD2B.ch
 Acq On : 08 Jul 2025 11:38
 Operator : YP\AJ
 Sample : Q2476-01DL 5X
 Misc :
 ALS Vial : 11 Sample Multiplier: 1

Instrument :
 ECD_P
 ClientSampleId :
 50731DL

Integration File signal 1: autoint1.e
 Integration File signal 2: autoint2.e
 Quant Time: Jul 08 11:48:27 2025
 Quant Method : Z:\pestpcbsrv\HPCHEM1\ECD_P\methods\PP070825.M
 Quant Title : GC EXTRACTABLES
 QLast Update : Tue Jul 08 08:35:32 2025
 Response via : Initial Calibration
 Integrator: ChemStation

Volume Inj. : 2 µl
 Signal #1 Phase : ZB-MR1 Signal #2 Phase: ZB-MR2
 Signal #1 Info : 30Mx0.32mmx 0.50µ Signal #2 Info : 30M x 0.32mm x 0.25µm

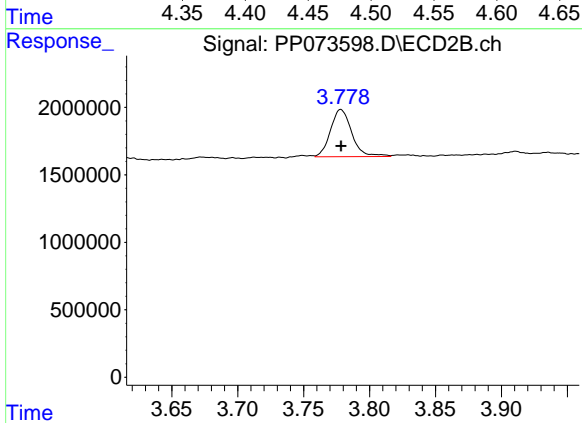




#1 Tetrachloro-m-xylene

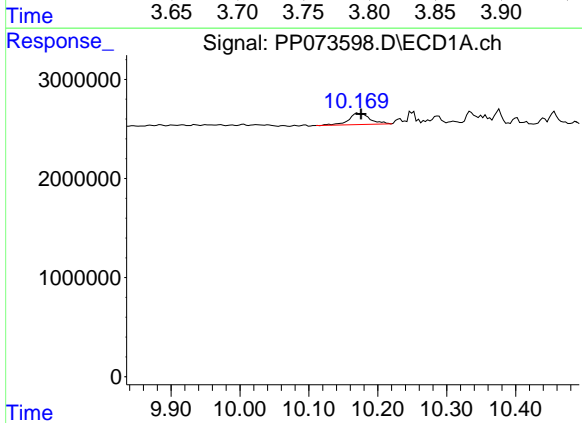
R.T.: 4.488 min
 Delta R.T.: 0.000 min
 Response: 2837191
 Conc: 2.07 ng/ml

Instrument :
 ECD_P
 ClientSampleId :
 50731DL



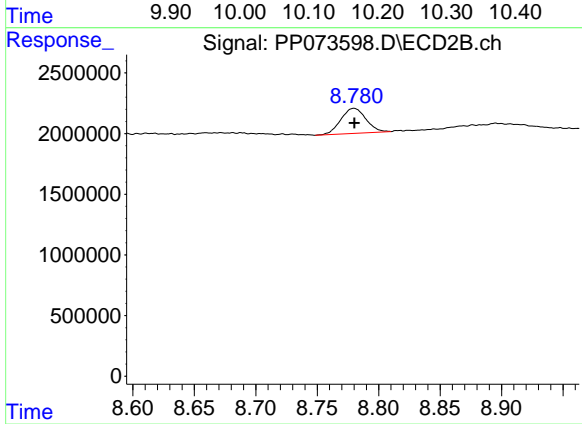
#1 Tetrachloro-m-xylene

R.T.: 3.778 min
 Delta R.T.: 0.000 min
 Response: 3931089
 Conc: 2.13 ng/ml



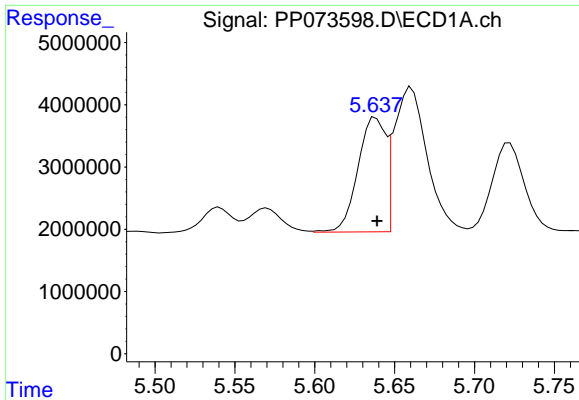
#2 Decachlorobiphenyl

R.T.: 10.171 min
 Delta R.T.: -0.005 min
 Response: 2440414
 Conc: 2.24 ng/ml



#2 Decachlorobiphenyl

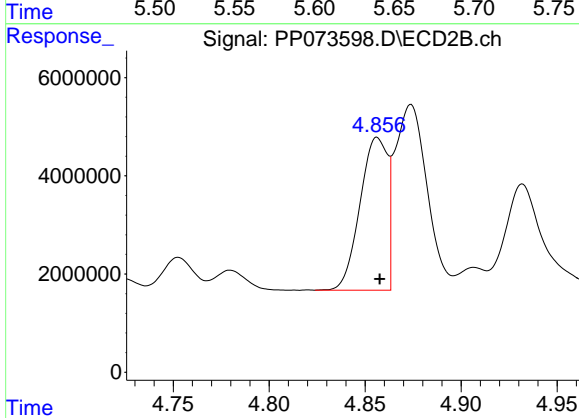
R.T.: 8.780 min
 Delta R.T.: 0.000 min
 Response: 2932457
 Conc: 2.22 ng/ml



#3 AR-1016-1

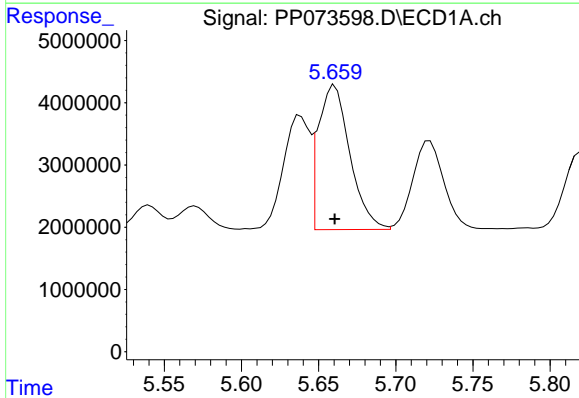
R.T.: 5.638 min
 Delta R.T.: 0.000 min
 Response: 22029456
 Conc: 463.65 ng/ml

Instrument :
 ECD_P
 ClientSampleId :
 50731DL



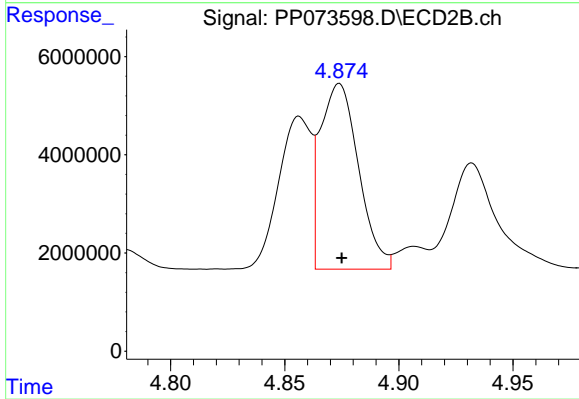
#3 AR-1016-1

R.T.: 4.856 min
 Delta R.T.: -0.001 min
 Response: 31083029
 Conc: 455.93 ng/ml



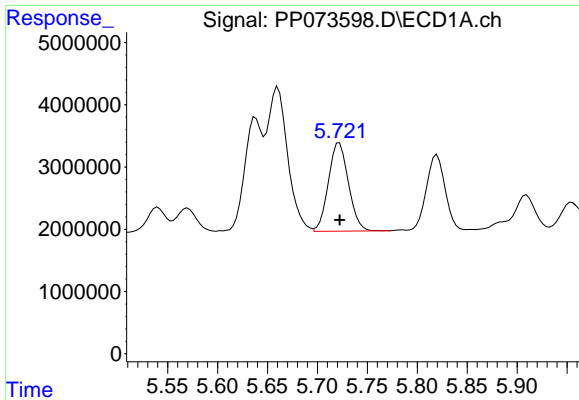
#4 AR-1016-2

R.T.: 5.660 min
 Delta R.T.: 0.000 min
 Response: 33175341
 Conc: 465.85 ng/ml



#4 AR-1016-2

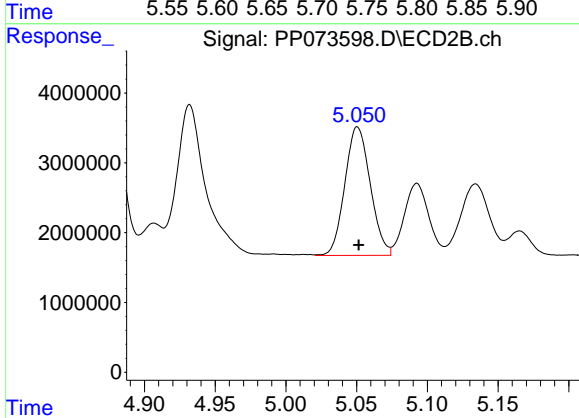
R.T.: 4.874 min
 Delta R.T.: -0.001 min
 Response: 44025290
 Conc: 432.11 ng/ml



#5 AR-1016-3

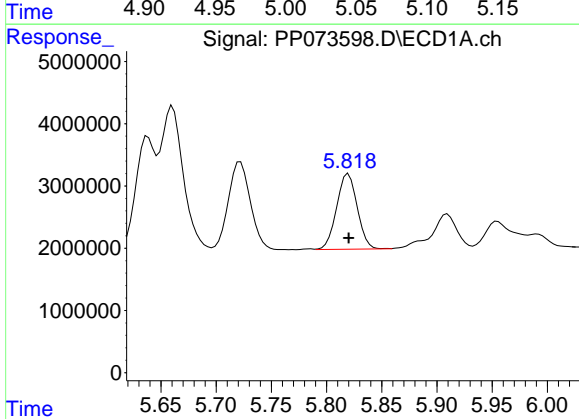
R.T.: 5.722 min
 Delta R.T.: 0.000 min
 Response: 19825824
 Conc: 454.06 ng/ml

Instrument :
 ECD_P
 ClientSampleId :
 50731DL



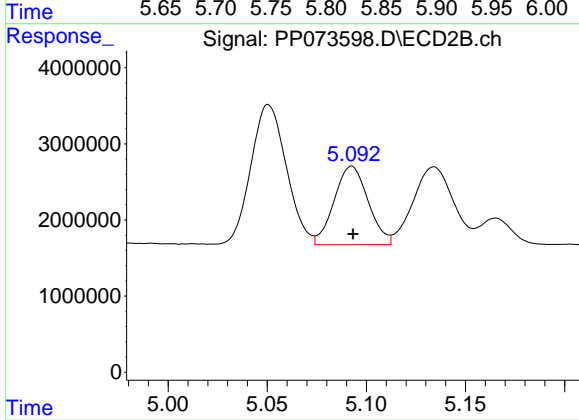
#5 AR-1016-3

R.T.: 5.051 min
 Delta R.T.: 0.000 min
 Response: 23003942
 Conc: 425.16 ng/ml



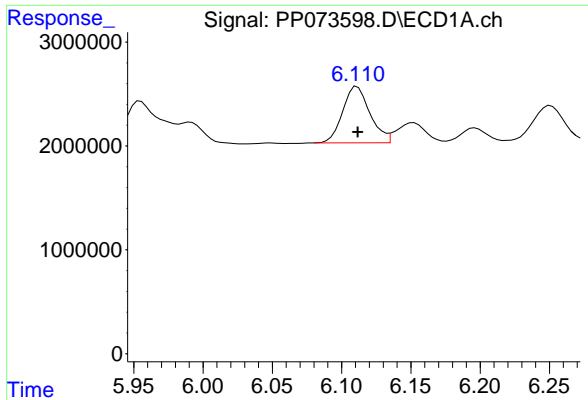
#6 AR-1016-4

R.T.: 5.820 min
 Delta R.T.: 0.000 min
 Response: 15725374
 Conc: 437.48 ng/ml



#6 AR-1016-4

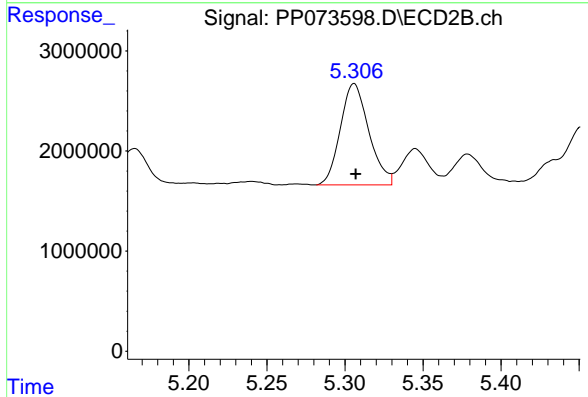
R.T.: 5.093 min
 Delta R.T.: 0.000 min
 Response: 12341849
 Conc: 281.26 ng/ml



#7 AR-1016-5

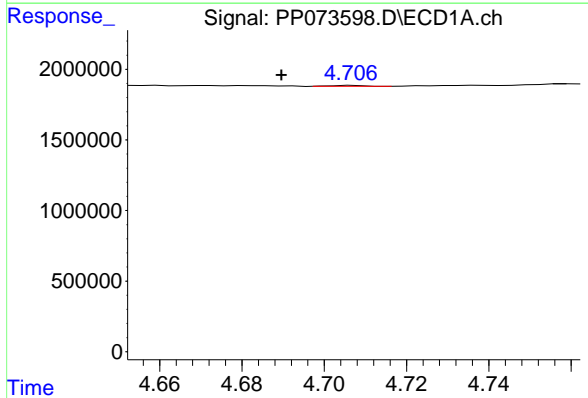
R.T.: 6.111 min
 Delta R.T.: 0.000 min
 Response: 7431482
 Conc: 237.20 ng/ml

Instrument :
 ECD_P
 ClientSampleId :
 50731DL



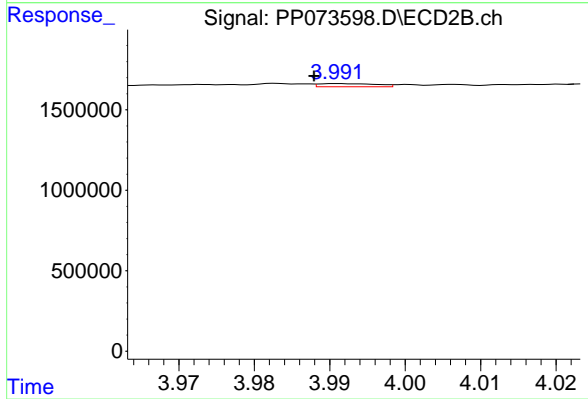
#7 AR-1016-5

R.T.: 5.306 min
 Delta R.T.: -0.001 min
 Response: 12872555
 Conc: 235.84 ng/ml



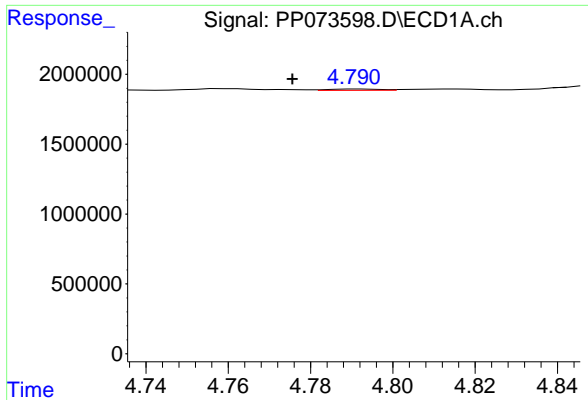
#8 AR-1221-1

R.T.: 4.707 min
 Delta R.T.: 0.018 min
 Response: 37126
 Conc: 2.08 ng/ml



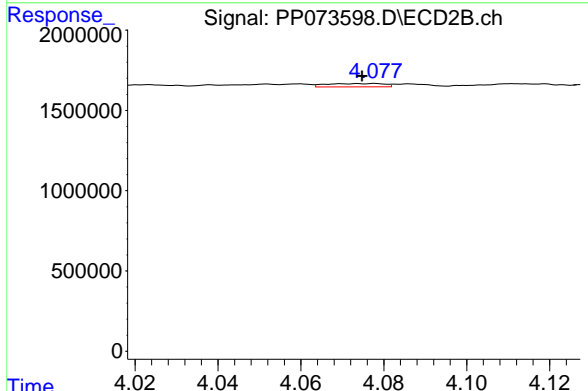
#8 AR-1221-1

R.T.: 3.991 min
 Delta R.T.: 0.003 min
 Response: 104375
 Conc: 3.86 ng/ml

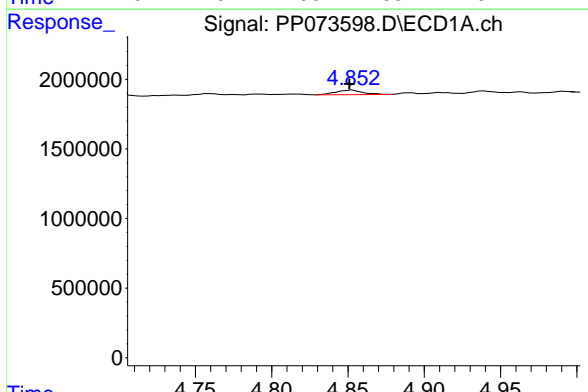


#9 AR-1221-2
 R.T.: 4.792 min
 Delta R.T.: 0.016 min
 Response: 82275
 Conc: 6.09 ng/ml

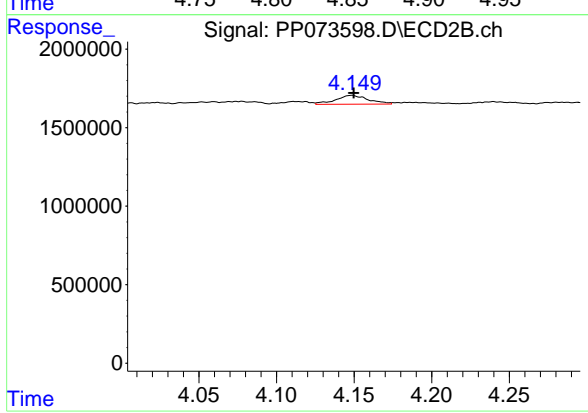
Instrument :
 ECD_P
 ClientSampleId :
 50731DL



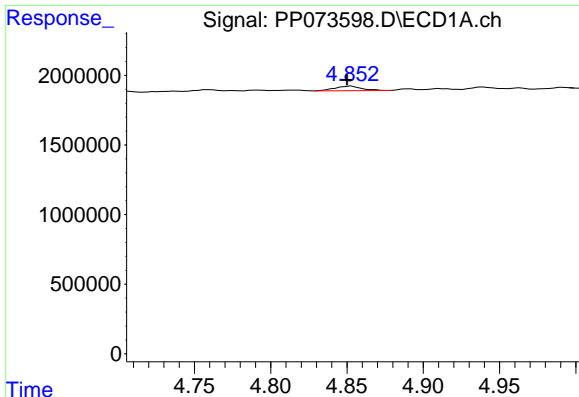
#9 AR-1221-2
 R.T.: 4.078 min
 Delta R.T.: 0.003 min
 Response: 203613
 Conc: 10.00 ng/ml



#10 AR-1221-3
 R.T.: 4.853 min
 Delta R.T.: 0.002 min
 Response: 409258
 Conc: 9.84 ng/ml



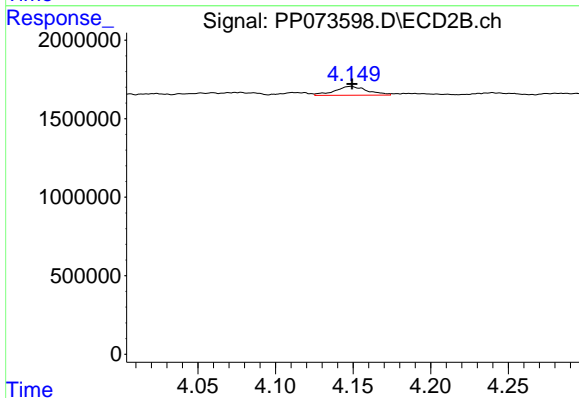
#10 AR-1221-3
 R.T.: 4.149 min
 Delta R.T.: -0.001 min
 Response: 820726
 Conc: 13.36 ng/ml



#11 AR-1232-1

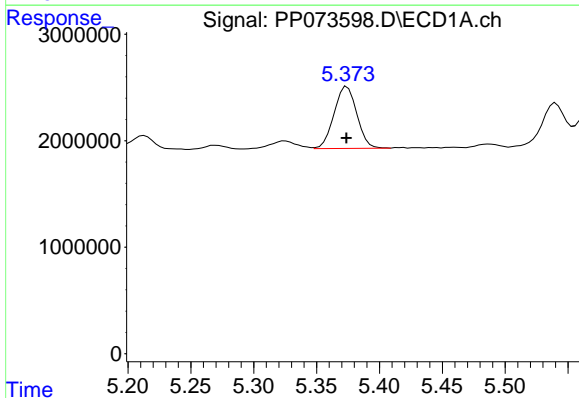
R.T.: 4.853 min
 Delta R.T.: 0.003 min
 Response: 409258
 Conc: 12.53 ng/ml

Instrument :
 ECD_P
 ClientSampleId :
 50731DL



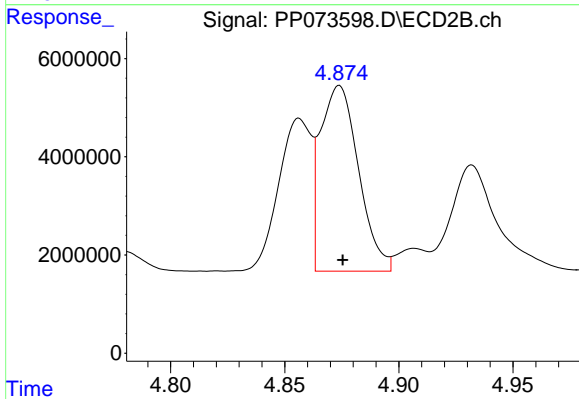
#11 AR-1232-1

R.T.: 4.149 min
 Delta R.T.: 0.000 min
 Response: 820726
 Conc: 17.61 ng/ml



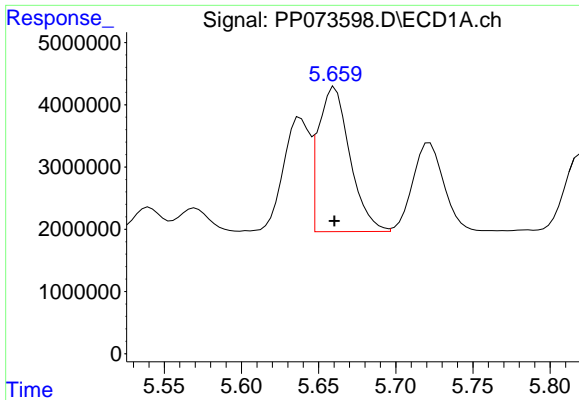
#12 AR-1232-2

R.T.: 5.374 min
 Delta R.T.: 0.000 min
 Response: 7335968
 Conc: 451.31 ng/ml



#12 AR-1232-2

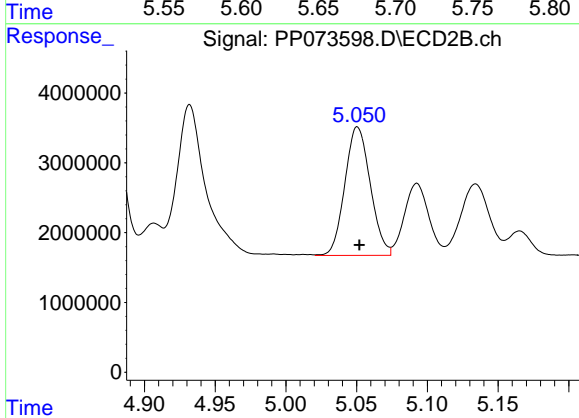
R.T.: 4.874 min
 Delta R.T.: -0.001 min
 Response: 44025290
 Conc: 923.74 ng/ml



#13 AR-1232-3

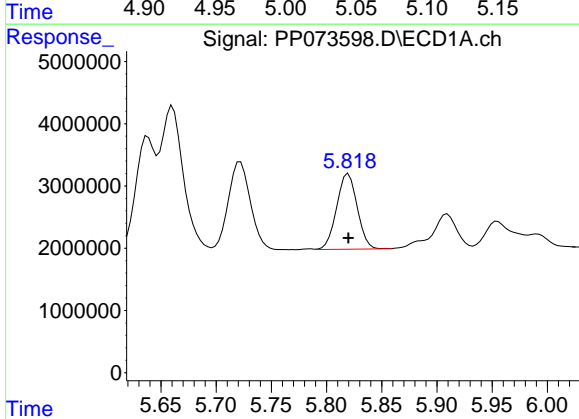
R.T.: 5.660 min
 Delta R.T.: 0.000 min
 Response: 33175341
 Conc: 1005.51 ng/ml

Instrument :
 ECD_P
 ClientSampleId :
 50731DL



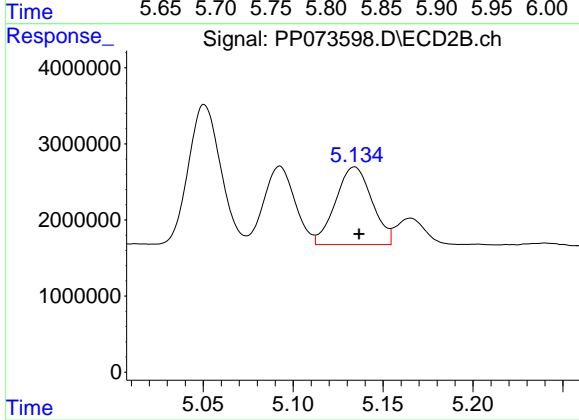
#13 AR-1232-3

R.T.: 5.051 min
 Delta R.T.: -0.001 min
 Response: 23003942
 Conc: 919.09 ng/ml



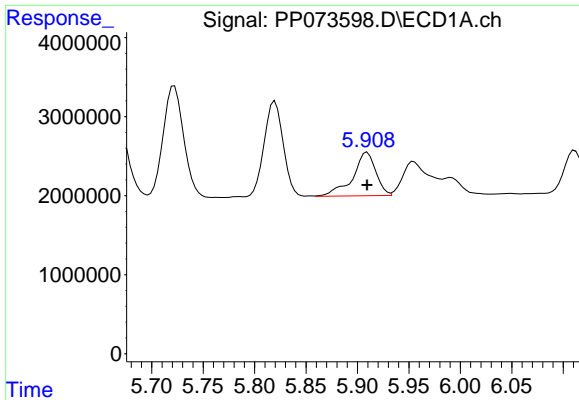
#14 AR-1232-4

R.T.: 5.820 min
 Delta R.T.: 0.000 min
 Response: 15725374
 Conc: 956.23 ng/ml



#14 AR-1232-4

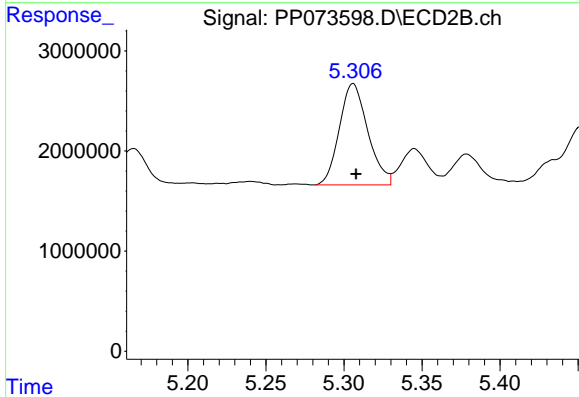
R.T.: 5.134 min
 Delta R.T.: -0.002 min
 Response: 14390988
 Conc: 664.52 ng/ml



#15 AR-1232-5

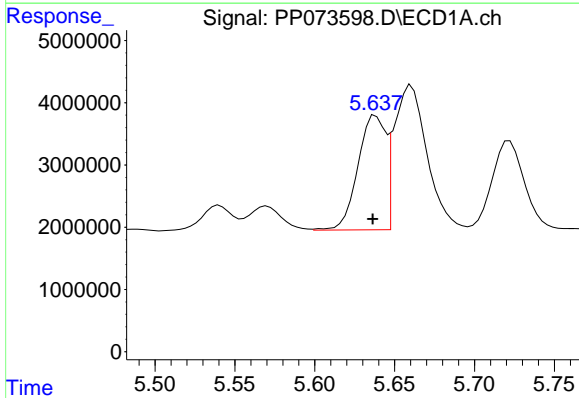
R.T.: 5.909 min
 Delta R.T.: 0.000 min
 Response: 8656311
 Conc: 818.92 ng/ml

Instrument :
 ECD_P
 ClientSampleId :
 50731DL



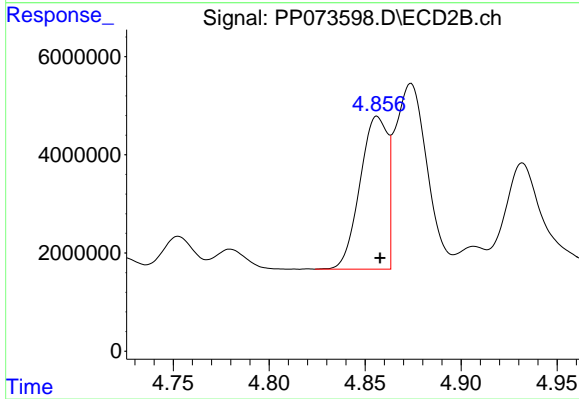
#15 AR-1232-5

R.T.: 5.306 min
 Delta R.T.: -0.002 min
 Response: 12872555
 Conc: 570.50 ng/ml



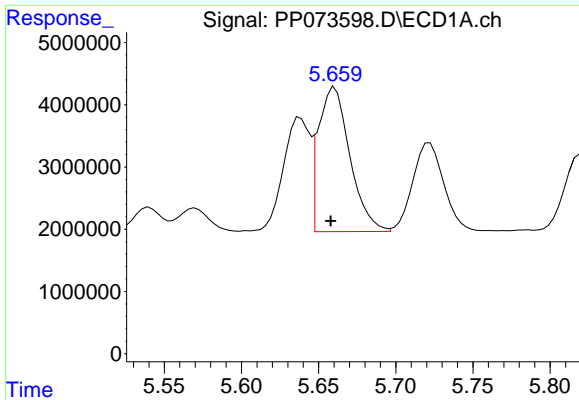
#16 AR-1242-1

R.T.: 5.638 min
 Delta R.T.: 0.002 min
 Response: 22029456
 Conc: 576.87 ng/ml



#16 AR-1242-1

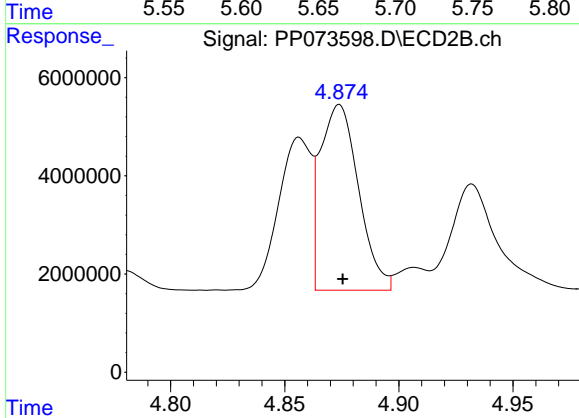
R.T.: 4.856 min
 Delta R.T.: -0.001 min
 Response: 31083029
 Conc: 538.10 ng/ml



#17 AR-1242-2

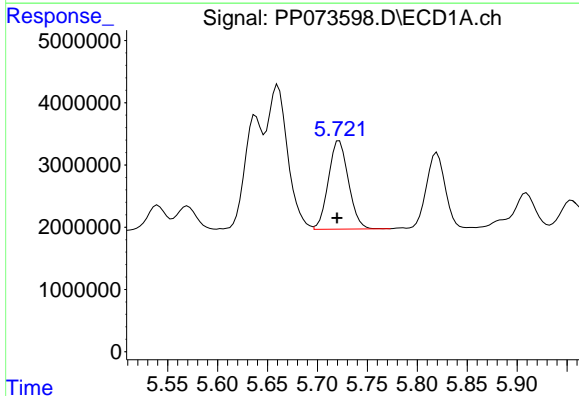
R.T.: 5.660 min
 Delta R.T.: 0.003 min
 Response: 33175341
 Conc: 554.01 ng/ml

Instrument :
 ECD_P
 ClientSampleId :
 50731DL



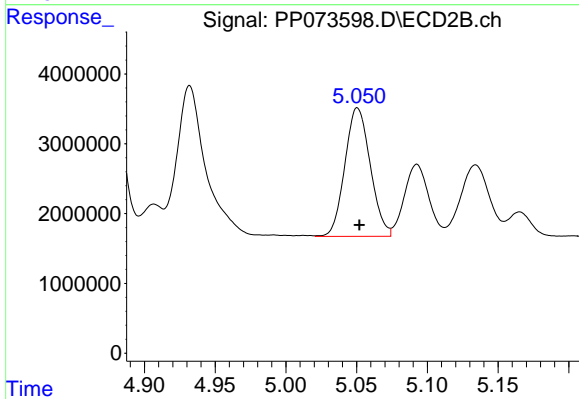
#17 AR-1242-2

R.T.: 4.874 min
 Delta R.T.: -0.002 min
 Response: 44025290
 Conc: 509.23 ng/ml



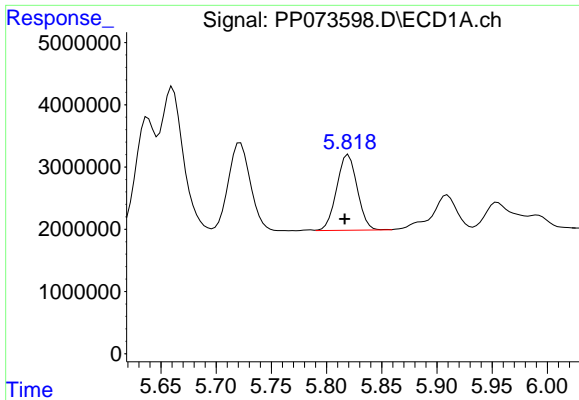
#18 AR-1242-3

R.T.: 5.722 min
 Delta R.T.: 0.002 min
 Response: 19825824
 Conc: 541.38 ng/ml



#18 AR-1242-3

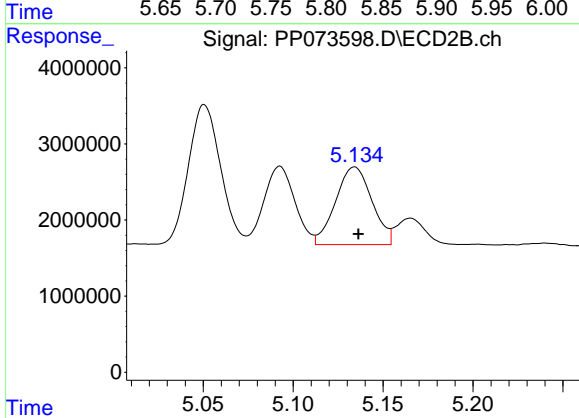
R.T.: 5.051 min
 Delta R.T.: -0.001 min
 Response: 23003942
 Conc: 500.67 ng/ml



#19 AR-1242-4

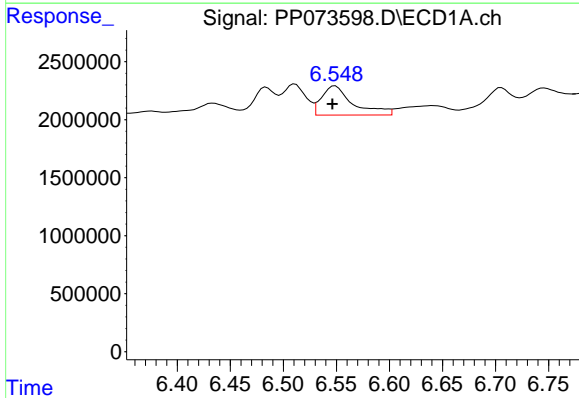
R.T.: 5.820 min
 Delta R.T.: 0.003 min
 Response: 15725374
 Conc: 489.34 ng/ml

Instrument :
 ECD_P
 ClientSampleId :
 50731DL



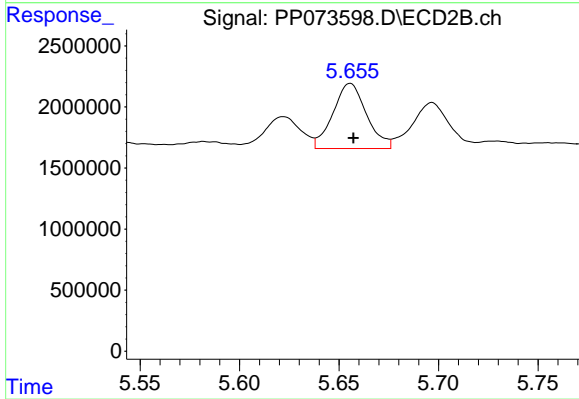
#19 AR-1242-4

R.T.: 5.134 min
 Delta R.T.: -0.002 min
 Response: 14390988
 Conc: 325.12 ng/ml



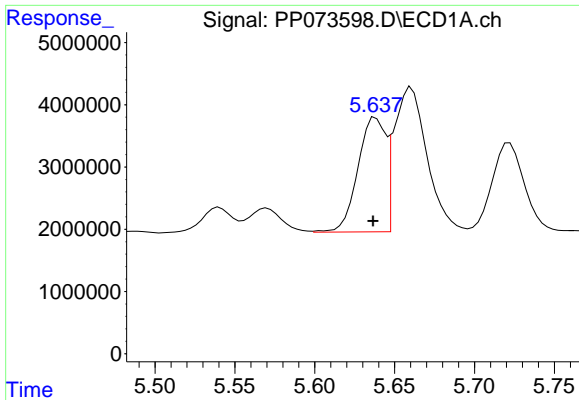
#20 AR-1242-5

R.T.: 6.549 min
 Delta R.T.: 0.003 min
 Response: 5162336
 Conc: 157.69 ng/ml



#20 AR-1242-5

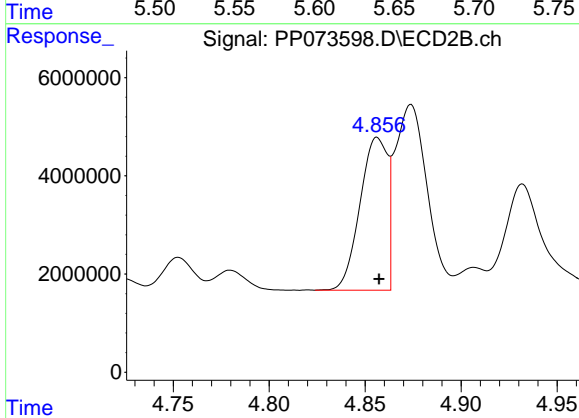
R.T.: 5.656 min
 Delta R.T.: -0.002 min
 Response: 6279762
 Conc: 113.68 ng/ml



#21 AR-1248-1

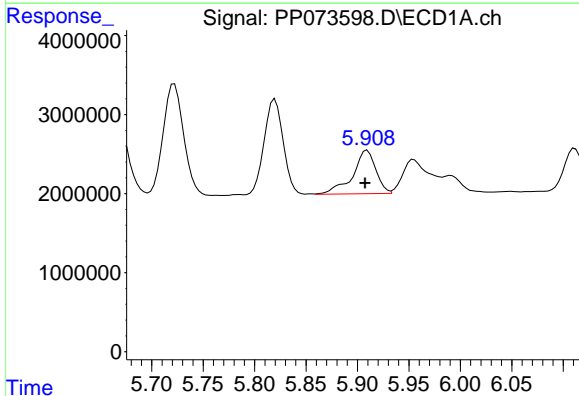
R.T.: 5.638 min
 Delta R.T.: 0.002 min
 Response: 22029456
 Conc: 713.61 ng/ml

Instrument :
 ECD_P
 ClientSampleId :
 50731DL



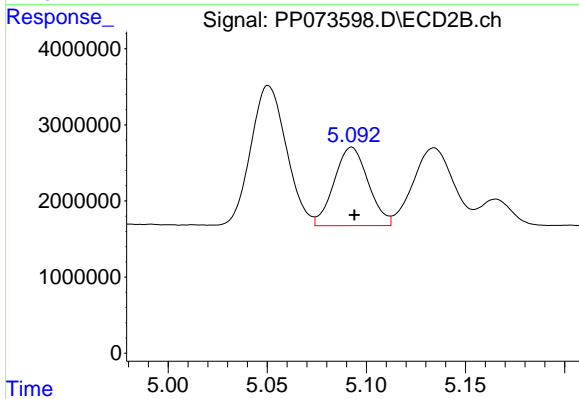
#21 AR-1248-1

R.T.: 4.856 min
 Delta R.T.: 0.000 min
 Response: 31083029
 Conc: 692.35 ng/ml



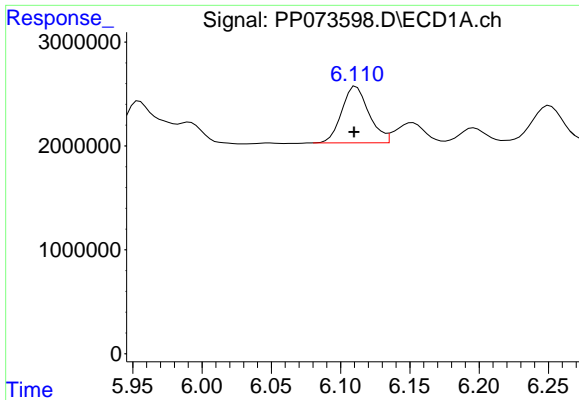
#22 AR-1248-2

R.T.: 5.909 min
 Delta R.T.: 0.002 min
 Response: 8656311
 Conc: 216.82 ng/ml



#22 AR-1248-2

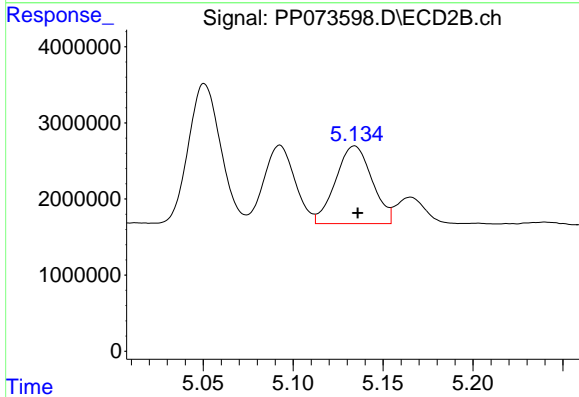
R.T.: 5.093 min
 Delta R.T.: -0.001 min
 Response: 12341849
 Conc: 200.56 ng/ml



#23 AR-1248-3

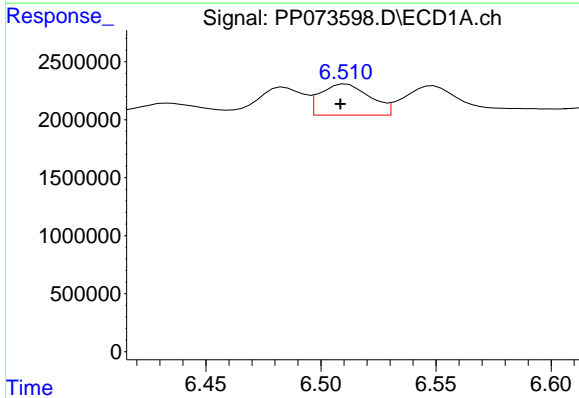
R.T.: 6.111 min
 Delta R.T.: 0.002 min
 Response: 7431482
 Conc: 167.34 ng/ml

Instrument :
 ECD_P
 ClientSampleId :
 50731DL



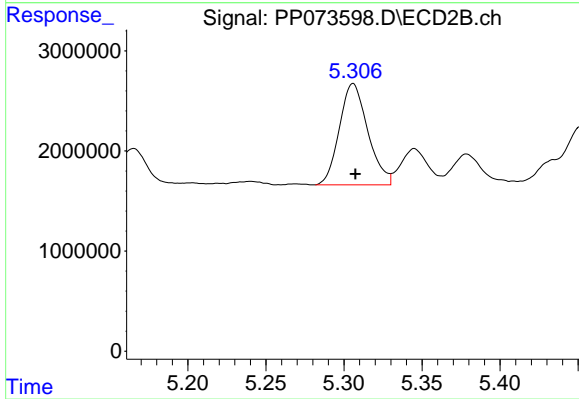
#23 AR-1248-3

R.T.: 5.134 min
 Delta R.T.: -0.002 min
 Response: 14390988
 Conc: 224.63 ng/ml



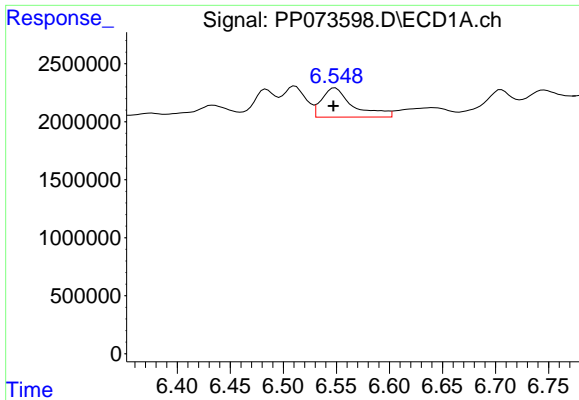
#24 AR-1248-4

R.T.: 6.511 min
 Delta R.T.: 0.002 min
 Response: 4030453
 Conc: 73.17 ng/ml



#24 AR-1248-4

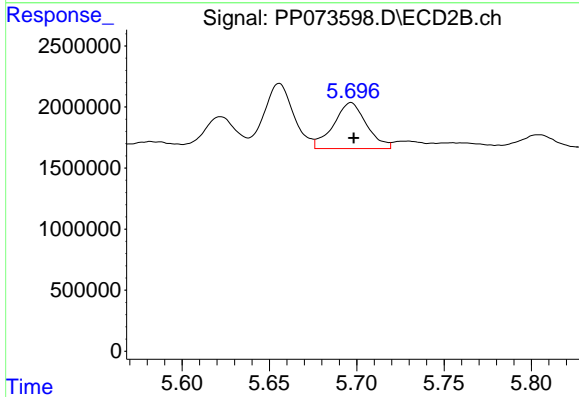
R.T.: 5.306 min
 Delta R.T.: -0.001 min
 Response: 12872555
 Conc: 170.77 ng/ml



#25 AR-1248-5

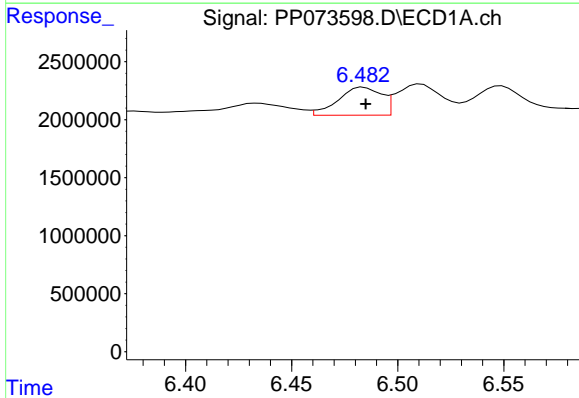
R.T.: 6.549 min
 Delta R.T.: 0.002 min
 Response: 5162336
 Conc: 95.97 ng/ml

Instrument :
 ECD_P
 ClientSampleId :
 50731DL



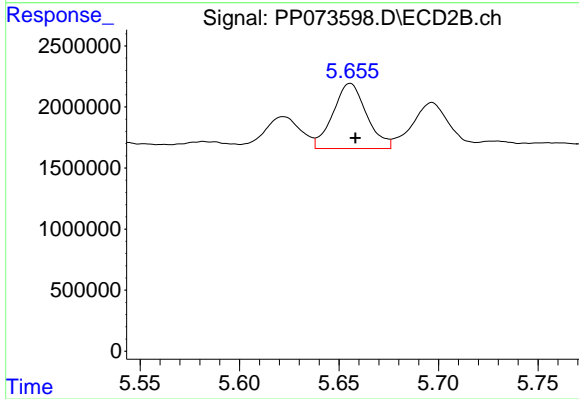
#25 AR-1248-5

R.T.: 5.697 min
 Delta R.T.: -0.002 min
 Response: 4976893
 Conc: 66.72 ng/ml



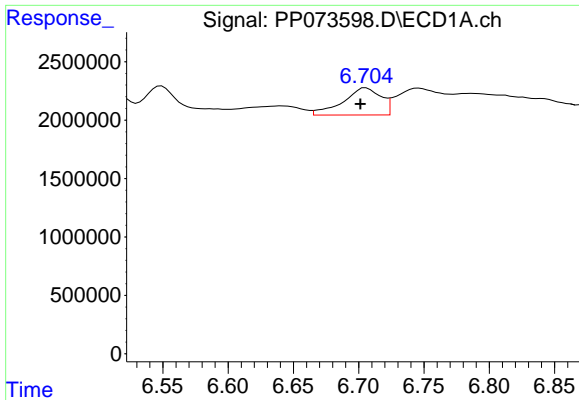
#26 AR-1254-1

R.T.: 6.484 min
 Delta R.T.: -0.001 min
 Response: 3413276
 Conc: 63.69 ng/ml



#26 AR-1254-1

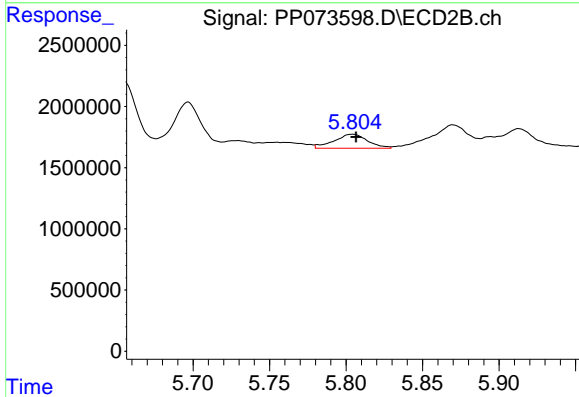
R.T.: 5.656 min
 Delta R.T.: -0.003 min
 Response: 6279762
 Conc: 54.12 ng/ml



#27 AR-1254-2

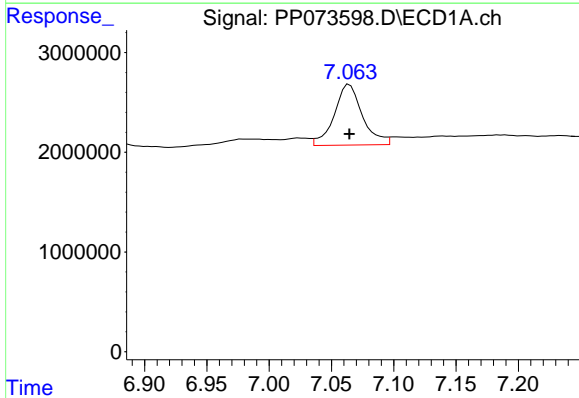
R.T.: 6.705 min
 Delta R.T.: 0.004 min
 Response: 4682373
 Conc: 56.22 ng/ml

Instrument :
 ECD_P
 ClientSampleId :
 50731DL



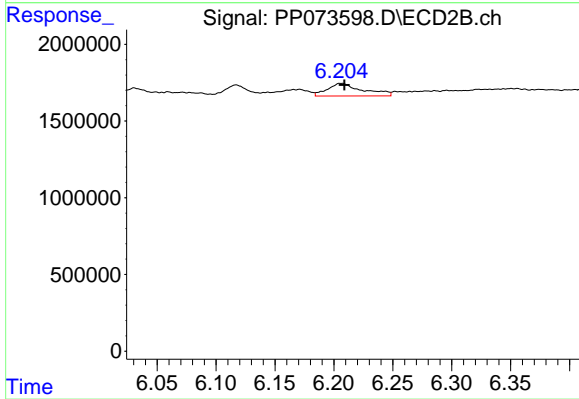
#27 AR-1254-2

R.T.: 5.804 min
 Delta R.T.: -0.002 min
 Response: 1745410
 Conc: 17.35 ng/ml



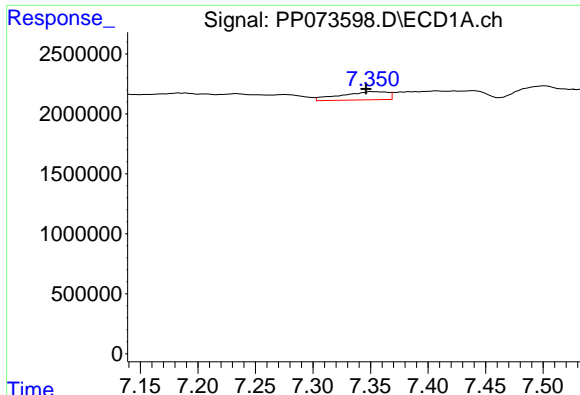
#28 AR-1254-3

R.T.: 7.064 min
 Delta R.T.: 0.000 min
 Response: 9612079
 Conc: 108.82 ng/ml



#28 AR-1254-3

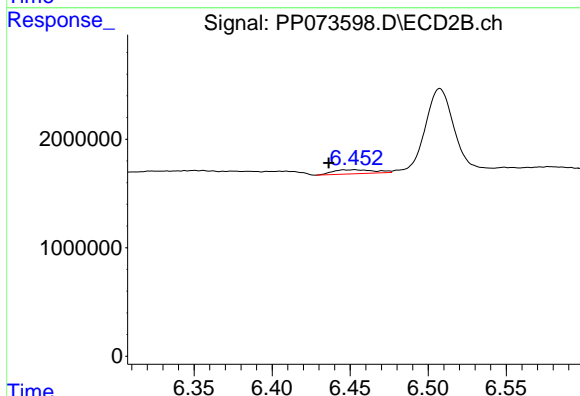
R.T.: 6.206 min
 Delta R.T.: -0.003 min
 Response: 1721806
 Conc: 11.15 ng/ml



#29 AR-1254-4

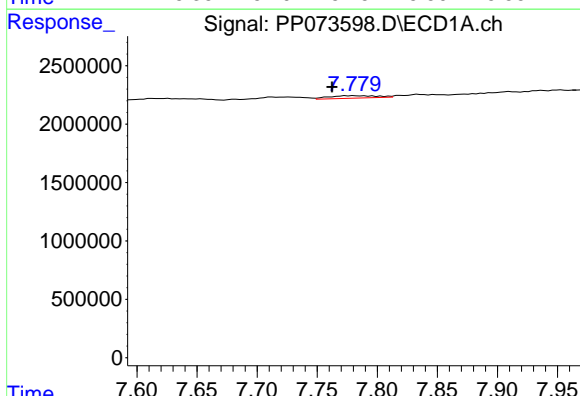
R.T.: 7.352 min
 Delta R.T.: 0.006 min
 Response: 1921794
 Conc: 24.43 ng/ml

Instrument :
 ECD_P
 ClientSampleId :
 50731DL



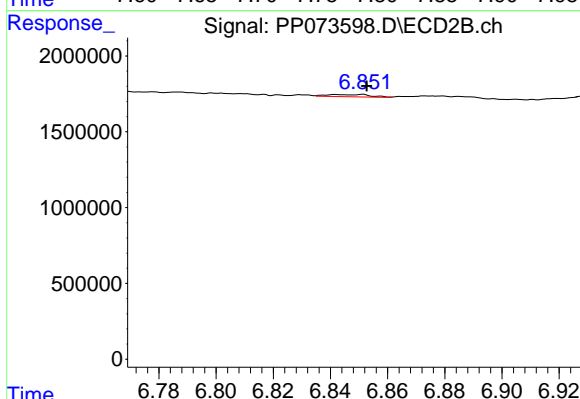
#29 AR-1254-4

R.T.: 6.453 min
 Delta R.T.: 0.017 min
 Response: 695982
 Conc: 7.36 ng/ml



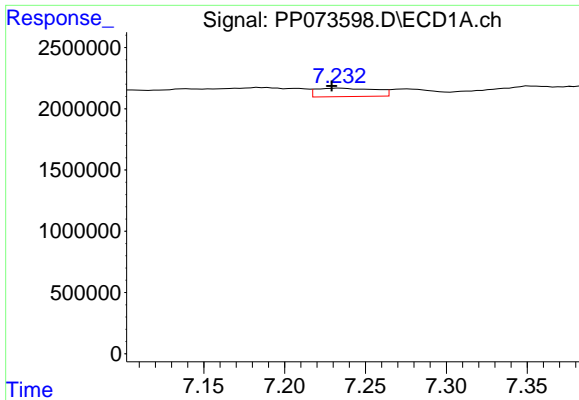
#30 AR-1254-5

R.T.: 7.781 min
 Delta R.T.: 0.019 min
 Response: 606083
 Conc: 8.23 ng/ml



#30 AR-1254-5

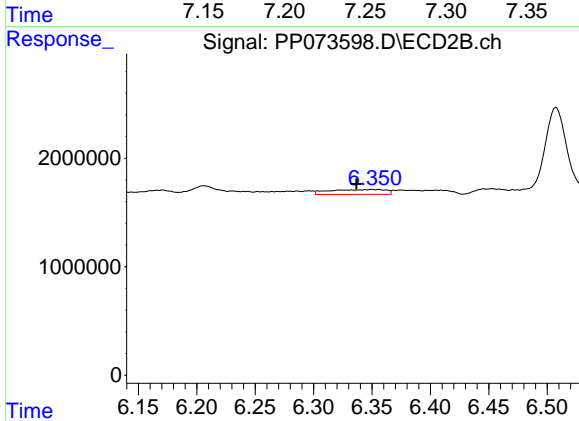
R.T.: 6.842 min
 Delta R.T.: -0.010 min
 Response: 157678
 Conc: 1.18 ng/ml



#31 AR-1260-1

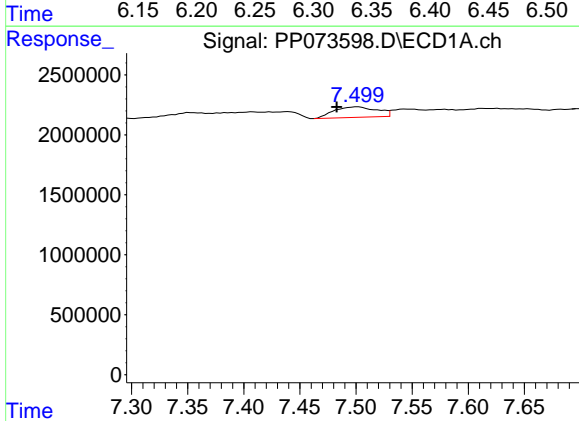
R.T.: 7.234 min
 Delta R.T.: 0.005 min
 Response: 1743099
 Conc: 29.56 ng/ml

Instrument :
 ECD_P
 ClientSampleId :
 50731DL



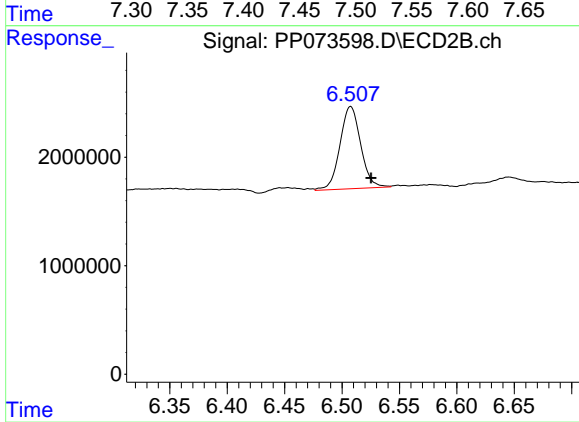
#31 AR-1260-1

R.T.: 6.350 min
 Delta R.T.: 0.014 min
 Response: 1511548
 Conc: 15.49 ng/ml



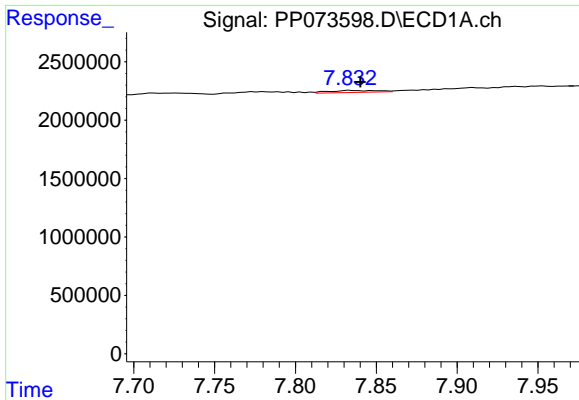
#32 AR-1260-2

R.T.: 7.501 min
 Delta R.T.: 0.019 min
 Response: 2320057
 Conc: 24.21 ng/ml



#32 AR-1260-2

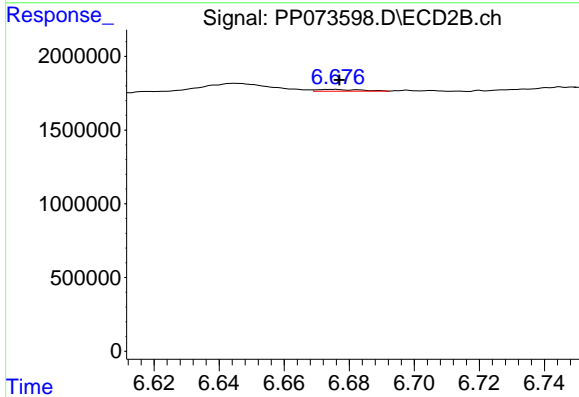
R.T.: 6.507 min
 Delta R.T.: -0.018 min
 Response: 9537448
 Conc: 77.64 ng/ml



#33 AR-1260-3

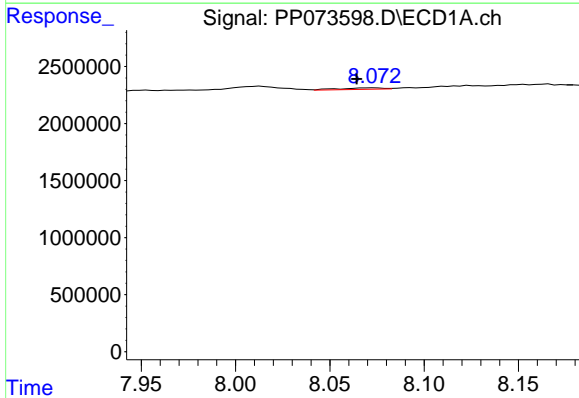
R.T.: 7.834 min
 Delta R.T.: -0.006 min
 Response: 369781
 Conc: 5.06 ng/ml

Instrument :
 ECD_P
 ClientSampleId :
 50731DL



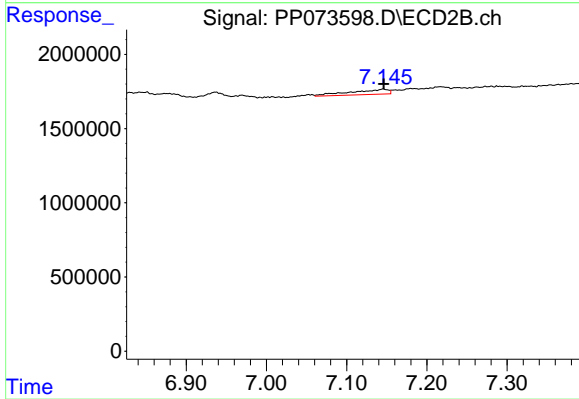
#33 AR-1260-3

R.T.: 6.675 min
 Delta R.T.: -0.002 min
 Response: 108288
 Conc: 0.99 ng/ml



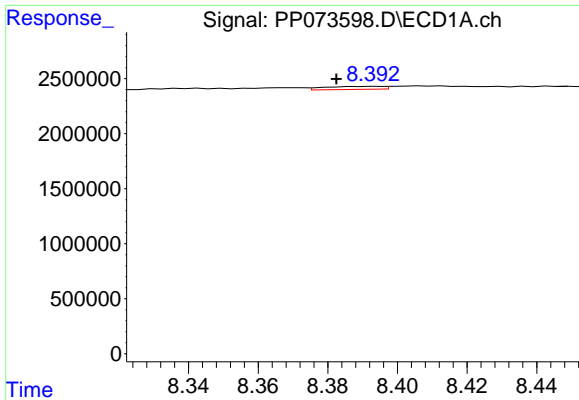
#34 AR-1260-4

R.T.: 8.073 min
 Delta R.T.: 0.009 min
 Response: 207201
 Conc: 3.17 ng/ml



#34 AR-1260-4

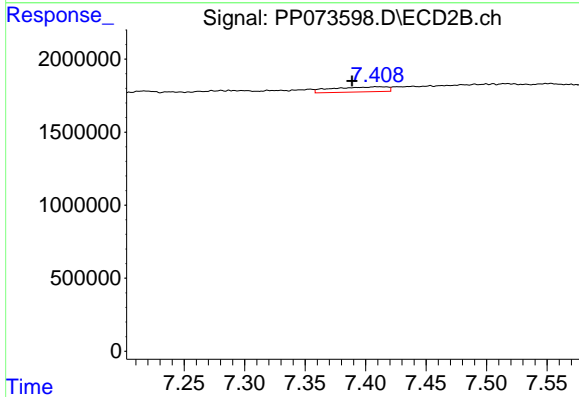
R.T.: 7.146 min
 Delta R.T.: 0.000 min
 Response: 1125010
 Conc: 12.58 ng/ml



#35 AR-1260-5

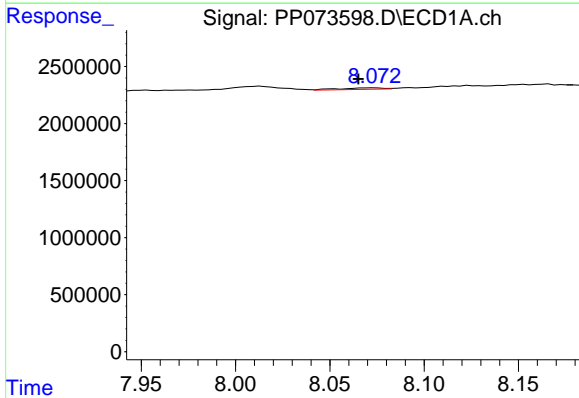
R.T.: 8.394 min
 Delta R.T.: 0.011 min
 Response: 309364
 Conc: 2.05 ng/ml

Instrument :
 ECD_P
 ClientSampleId :
 50731DL



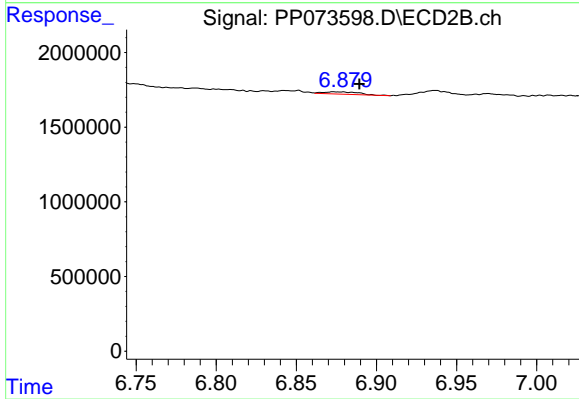
#35 AR-1260-5

R.T.: 7.409 min
 Delta R.T.: 0.020 min
 Response: 1088127
 Conc: 4.84 ng/ml



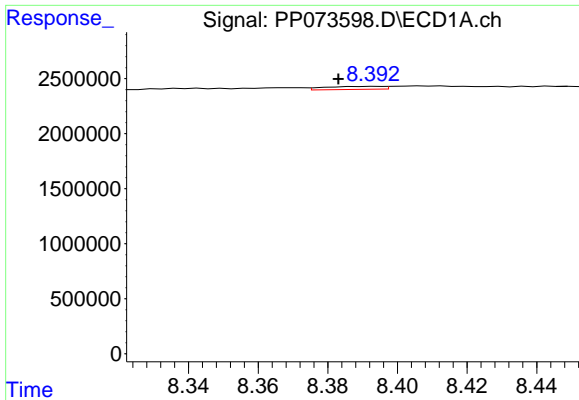
#36 AR-1262-1

R.T.: 8.073 min
 Delta R.T.: 0.008 min
 Response: 207201
 Conc: 2.38 ng/ml



#36 AR-1262-1

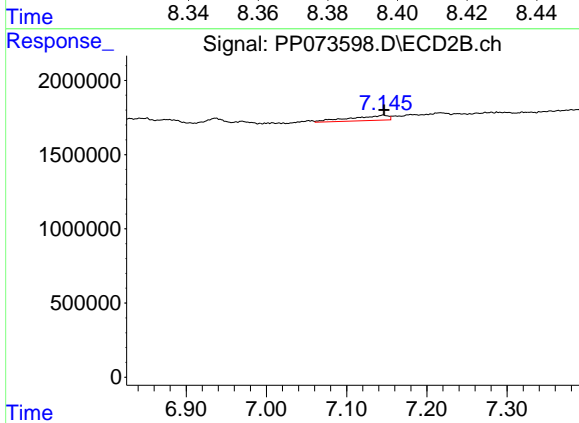
R.T.: 6.874 min
 Delta R.T.: -0.016 min
 Response: 237187
 Conc: 1.61 ng/ml



#37 AR-1262-2

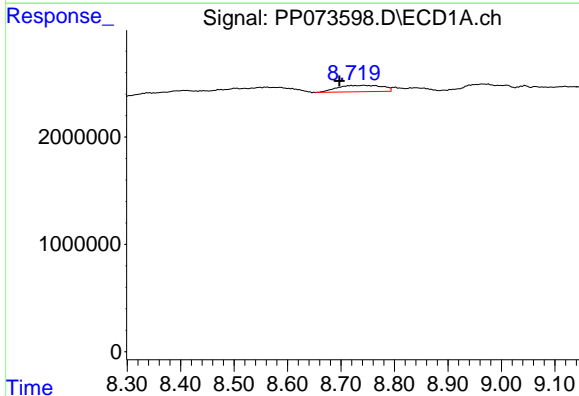
R.T.: 8.394 min
 Delta R.T.: 0.010 min
 Response: 309364
 Conc: 1.56 ng/ml

Instrument :
 ECD_P
 ClientSampleId :
 50731DL



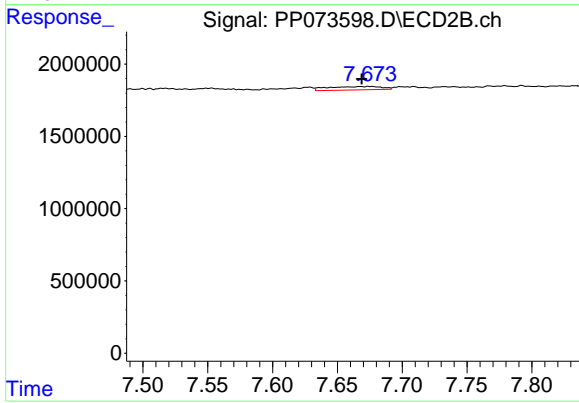
#37 AR-1262-2

R.T.: 7.146 min
 Delta R.T.: -0.001 min
 Response: 1125010
 Conc: 8.80 ng/ml



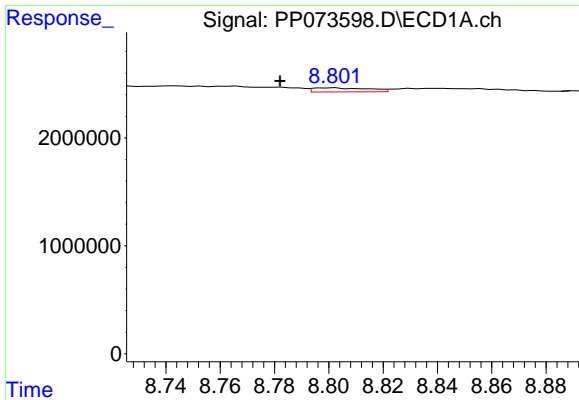
#38 AR-1262-3

R.T.: 8.744 min
 Delta R.T.: 0.047 min
 Response: 3500565
 Conc: 27.84 ng/ml



#38 AR-1262-3

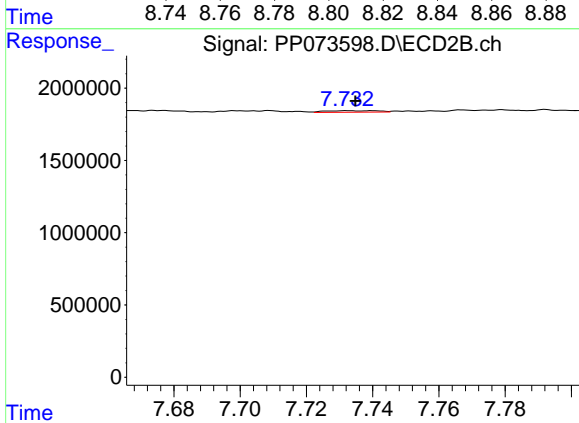
R.T.: 7.674 min
 Delta R.T.: 0.006 min
 Response: 670564
 Conc: 5.88 ng/ml



#39 AR-1262-4

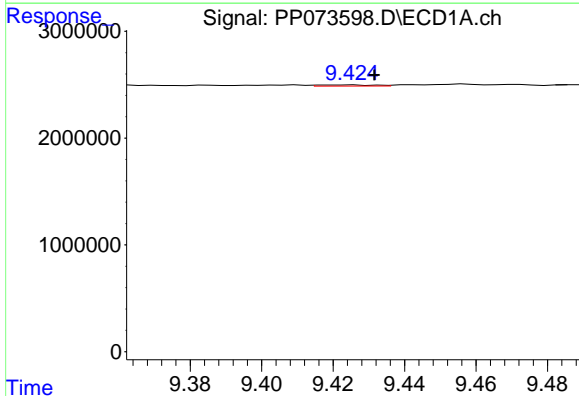
R.T.: 8.802 min
 Delta R.T.: 0.020 min
 Response: 533668
 Conc: 5.72 ng/ml

Instrument :
 ECD_P
 ClientSampleId :
 50731DL



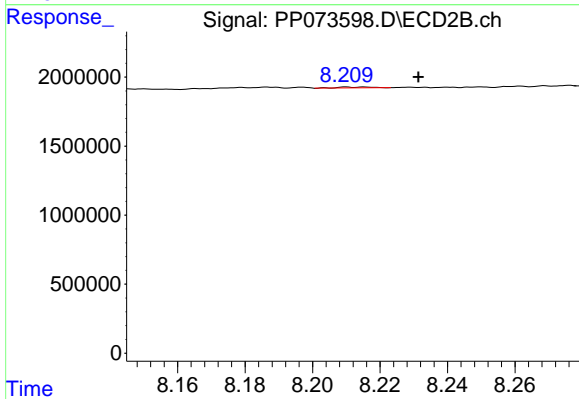
#39 AR-1262-4

R.T.: 7.732 min
 Delta R.T.: -0.002 min
 Response: 114258
 Conc: 0.62 ng/ml



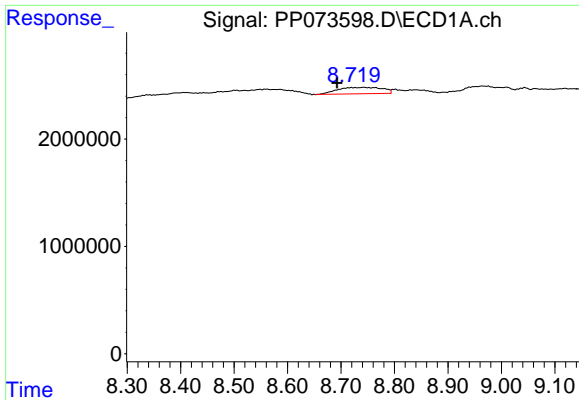
#40 AR-1262-5

R.T.: 9.425 min
 Delta R.T.: -0.006 min
 Response: 111795
 Conc: 1.76 ng/ml



#40 AR-1262-5

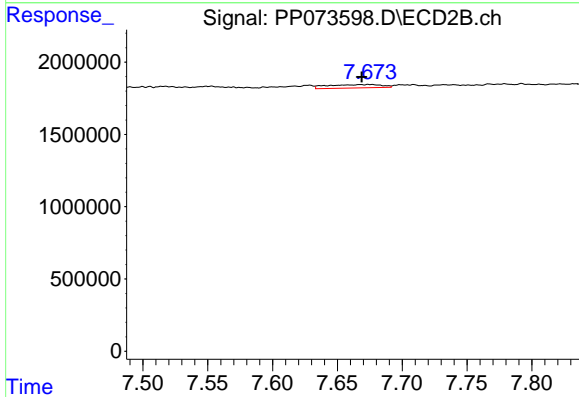
R.T.: 8.210 min
 Delta R.T.: -0.021 min
 Response: 45264
 Conc: 0.54 ng/ml



#41 AR-1268-1

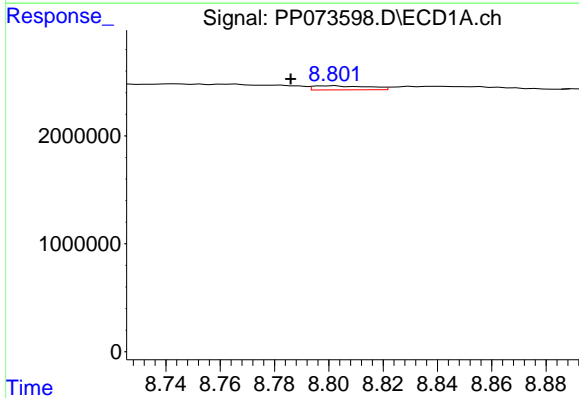
R.T.: 8.744 min
 Delta R.T.: 0.051 min
 Response: 3500565
 Conc: 15.68 ng/ml

Instrument :
 ECD_P
 ClientSampleId :
 50731DL



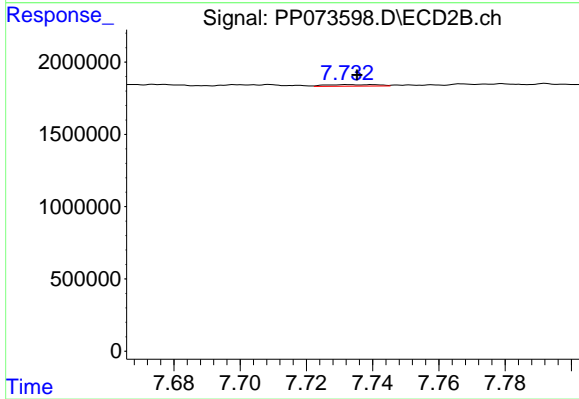
#41 AR-1268-1

R.T.: 7.674 min
 Delta R.T.: 0.006 min
 Response: 670564
 Conc: 2.18 ng/ml



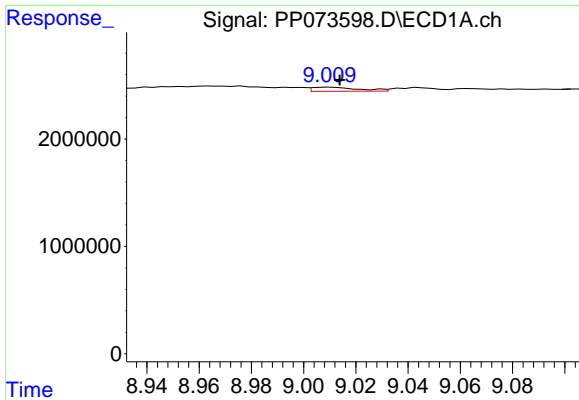
#42 AR-1268-2

R.T.: 8.802 min
 Delta R.T.: 0.016 min
 Response: 533668
 Conc: 2.80 ng/ml



#42 AR-1268-2

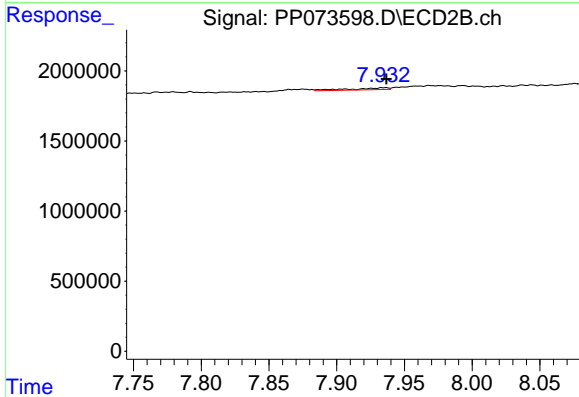
R.T.: 7.732 min
 Delta R.T.: -0.003 min
 Response: 114258
 Conc: 0.43 ng/ml



#43 AR-1268-3

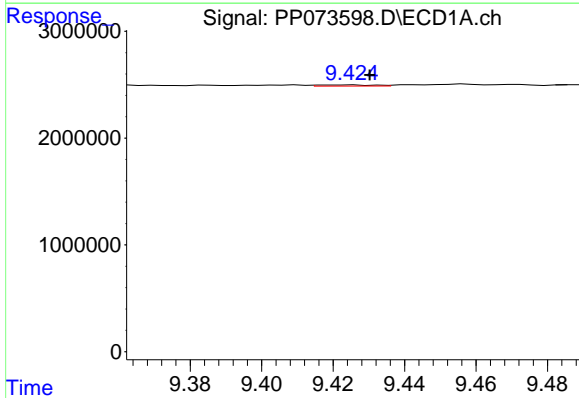
R.T.: 9.010 min
 Delta R.T.: -0.004 min
 Response: 481526
 Conc: 2.91 ng/ml

Instrument :
 ECD_P
 ClientSampleId :
 50731DL



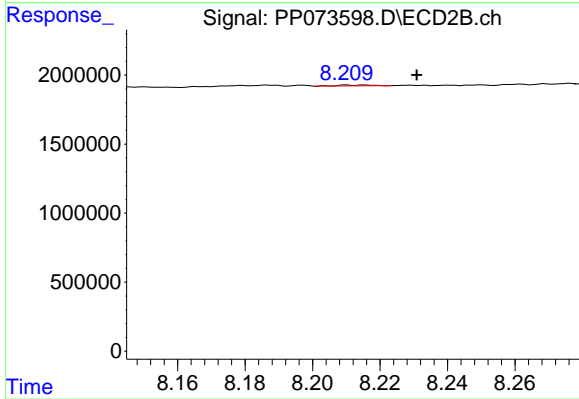
#43 AR-1268-3

R.T.: 7.935 min
 Delta R.T.: -0.002 min
 Response: 260888
 Conc: 1.16 ng/ml



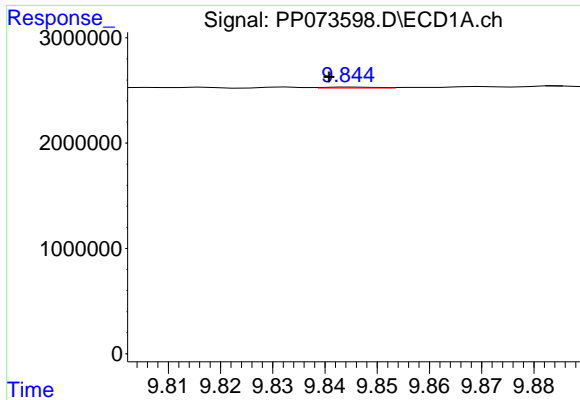
#44 AR-1268-4

R.T.: 9.425 min
 Delta R.T.: -0.005 min
 Response: 111795
 Conc: 1.61 ng/ml



#44 AR-1268-4

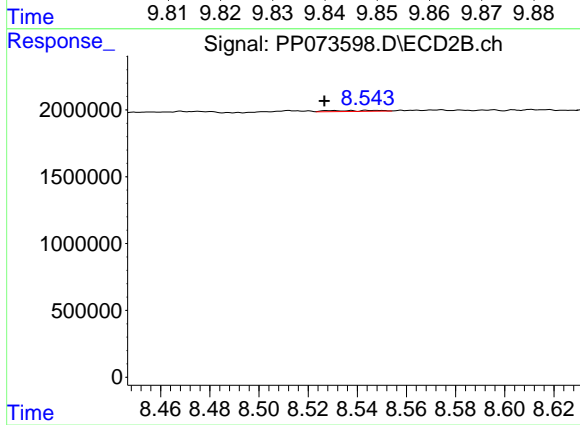
R.T.: 8.210 min
 Delta R.T.: -0.021 min
 Response: 45264
 Conc: 0.49 ng/ml



#45 AR-1268-5

R.T.: 9.845 min
 Delta R.T.: 0.005 min
 Response: 62259
 Conc: 0.14 ng/ml

Instrument :
 ECD_P
 ClientSampleId :
 50731DL



#45 AR-1268-5

R.T.: 8.530 min
 Delta R.T.: 0.003 min
 Response: 101925
 Conc: 0.17 ng/ml