

Data Path : Z:\pestpcbsrv\HPCHEM1\ECD\_P\Data\PP070925\  
 Data File : PP073602.D  
 Signal(s) : Signal #1: ECD1A.ch Signal #2: ECD2B.ch  
 Acq On : 08 Jul 2025 12:44  
 Operator : YP\AJ  
 Sample : Q2508-02  
 Misc :  
 ALS Vial : 14 Sample Multiplier: 1

Instrument :  
 ECD\_P  
 ClientSampleId :  
 AUD-25-0106

Integration File signal 1: autoint1.e  
 Integration File signal 2: autoint2.e  
 Quant Time: Jul 09 01:38:50 2025  
 Quant Method : Z:\pestpcbsrv\HPCHEM1\ECD\_P\methods\PP070825.M  
 Quant Title : GC EXTRACTABLES  
 QLast Update : Tue Jul 08 08:35:32 2025  
 Response via : Initial Calibration  
 Integrator: ChemStation

Volume Inj. : 2 µl  
 Signal #1 Phase : ZB-MR1 Signal #2 Phase: ZB-MR2  
 Signal #1 Info : 30Mx0.32mmx 0.50µ Signal #2 Info : 30M x 0.32mm x 0.25µm

Compound	RT#1	RT#2	Resp#1	Resp#2	ng/ml	ng/ml
System Monitoring Compounds						
1) SA Tetrachlo...	4.488	3.780	23108699	41374476	16.874	22.458 #
2) SA Decachlor...	10.176	8.781	19236628	23765453	17.631	17.961
Target Compounds						
3) L1 AR-1016-1	5.621	4.854	14574183	8210340	306.737	120.431 #
4) L1 AR-1016-2	5.679	4.854	21659708	8210340	304.146	80.585 #
5) L1 AR-1016-3	5.712	5.059	10188538	3630267	233.344	67.095 #
6) L1 AR-1016-4	5.825	5.112	4911303	3752201	136.632	85.509 #
7) L1 AR-1016-5	6.122	5.324	12195589	15679992	389.257	287.271 #
8) L2 AR-1221-1	4.691	3.976	3089068	8596844	172.898	317.873 #
9) L2 AR-1221-2	4.760	4.079	8673164	796625	642.244	39.126 #
10) L2 AR-1221-3	4.854	4.137	4992383	22497523	119.995	366.119 #
11) L3 AR-1232-1	4.854	4.137	4992383	22497523	152.903	482.631 #
12) L3 AR-1232-2	5.346	4.854	17503674	8210340	1076.839	172.270 #
13) L3 AR-1232-3	5.679	5.059	21659708	3630267	656.485	145.042 #
14) L3 AR-1232-4	5.825	5.135	4911303	5240429	298.647	241.982
15) L3 AR-1232-5	5.860f	5.324	1876620	15679992	177.536	694.929 #
16) L4 AR-1242-1	5.621	4.854	14574183	8210340	381.641	142.134 #
17) L4 AR-1242-2	5.679	4.854	21659708	8210340	361.706	94.968 #
18) L4 AR-1242-3	5.712	5.059	10188538	3630267	278.216	79.010 #
19) L4 AR-1242-4	5.825	5.135	4911303	5240429	152.829	118.392
20) L4 AR-1242-5	6.536	5.680	18695481	12036915	571.083	217.892 #
21) L5 AR-1248-1	5.621	4.854	14574183	8210340	472.107	182.879 #
22) L5 AR-1248-2	5.860f	5.112	1876620	3752201	47.006	60.975 #
23) L5 AR-1248-3	6.122	5.135	12195589	5240429	274.616	81.799 #
24) L5 AR-1248-4	6.488	5.324	11481097	15679992	208.442	208.020
25) L5 AR-1248-5	6.536	5.716	18695481	7545942	347.560	101.164 #
26) L6 AR-1254-1	6.488	5.680	11481097	12036915	214.241	103.740 #
27) L6 AR-1254-2	6.705	5.819	17481827	7535364	209.894	74.887 #
28) L6 AR-1254-3	7.066	6.208	32369554	3775840	366.455	24.448 #
29) L6 AR-1254-4	7.348	6.436	55346045	1329366	703.548	14.059 #
30) L6 AR-1254-5	7.769	6.845	22526261	351015	305.732	2.630 #
31) L7 AR-1260-1	7.212	6.299f	66649673	943973	1130.398	9.676 #
32) L7 AR-1260-2	0.000	6.510	0	10951098	N.D.	89.151 #
33) L7 AR-1260-3	7.815	6.684	14703021	570735	201.217	5.214 #
34) L7 AR-1260-4	8.074	7.160	4626782	1163530	70.854	13.014 #
35) L7 AR-1260-5	8.404	7.363	6723934	147266	44.573	0.655 #
36) L8 AR-1262-1	8.074	6.877	4626782	95564	53.165	0.647 #
37) L8 AR-1262-2	8.404	7.160	6723934	1163530	33.955	9.102 #
38) L8 AR-1262-3	8.723	7.679	7392961	1633176	58.803	14.324 #
39) L8 AR-1262-4	8.783	7.734	21161950	201886	226.907	1.097 #
40) L8 AR-1262-5	9.469f	8.218	5937760	559071	93.671	6.621 #
41) L9 AR-1268-1	8.723	7.679	7392961	1633176	33.119	5.313 #

Data Path : Z:\pestpcbsrv\HPCHEM1\ECD\_P\Data\PP070925\  
 Data File : PP073602.D  
 Signal(s) : Signal #1: ECD1A.ch Signal #2: ECD2B.ch  
 Acq On : 08 Jul 2025 12:44  
 Operator : YP\AJ  
 Sample : Q2508-02  
 Misc :  
 ALS Vial : 14 Sample Multiplier: 1

Instrument :  
 ECD\_P  
 ClientSampleId :  
 AUD-25-0106

Integration File signal 1: autoint1.e  
 Integration File signal 2: autoint2.e  
 Quant Time: Jul 09 01:38:50 2025  
 Quant Method : Z:\pestpcbsrv\HPCHEM1\ECD\_P\methods\PP070825.M  
 Quant Title : GC EXTRACTABLES  
 QLast Update : Tue Jul 08 08:35:32 2025  
 Response via : Initial Calibration  
 Integrator: ChemStation

Volume Inj. : 2 µl  
 Signal #1 Phase : ZB-MR1 Signal #2 Phase: ZB-MR2  
 Signal #1 Info : 30Mx0.32mmx 0.50µ Signal #2 Info : 30M x 0.32mm x 0.25µm

	Compound	RT#1	RT#2	Resp#1	Resp#2	ng/ml	ng/ml
42)	L9 AR-1268-2	8.783	7.734	21161950	201886	111.083	0.760 #
43)	L9 AR-1268-3	9.012	7.970	12778422	2863395	77.176	12.693 #
44)	L9 AR-1268-4	9.469f	8.218	5937760	559071	85.381	6.014 #
45)	L9 AR-1268-5	9.822	8.511	574558	182292	1.246	0.296 #

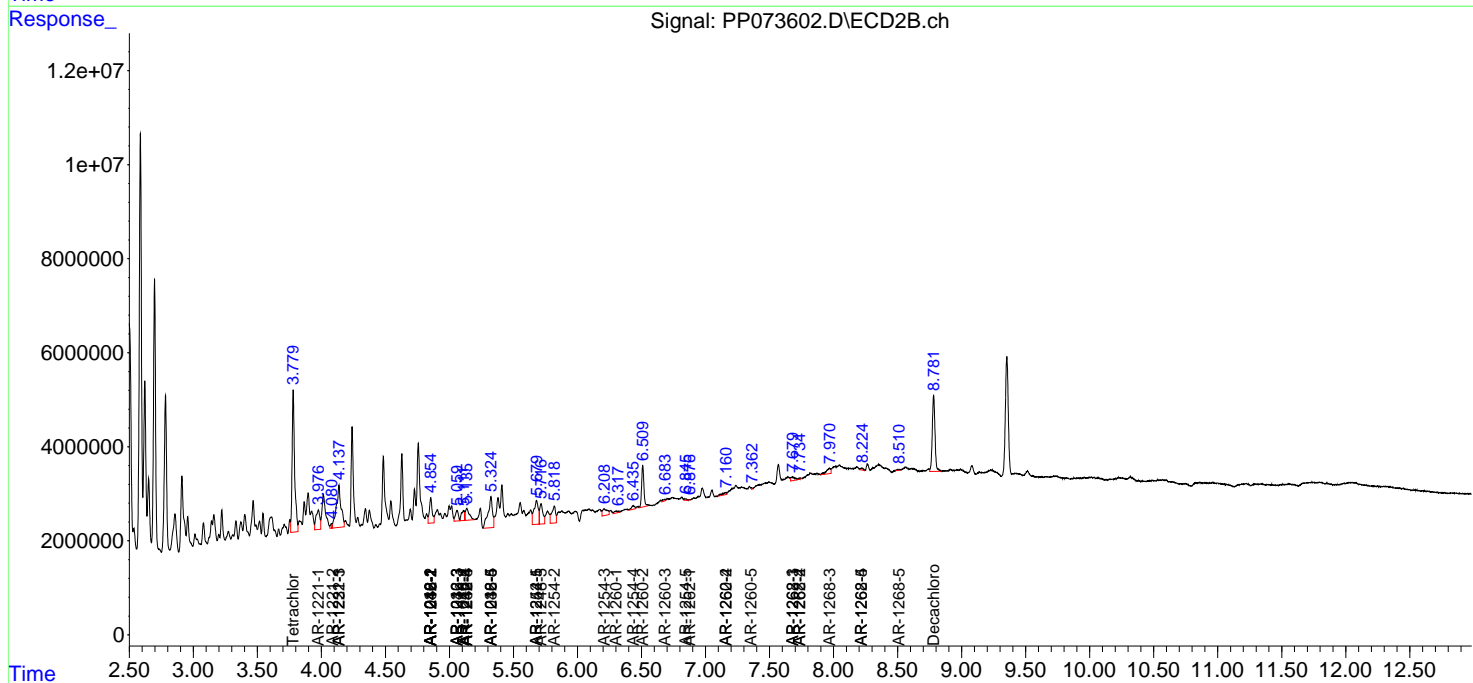
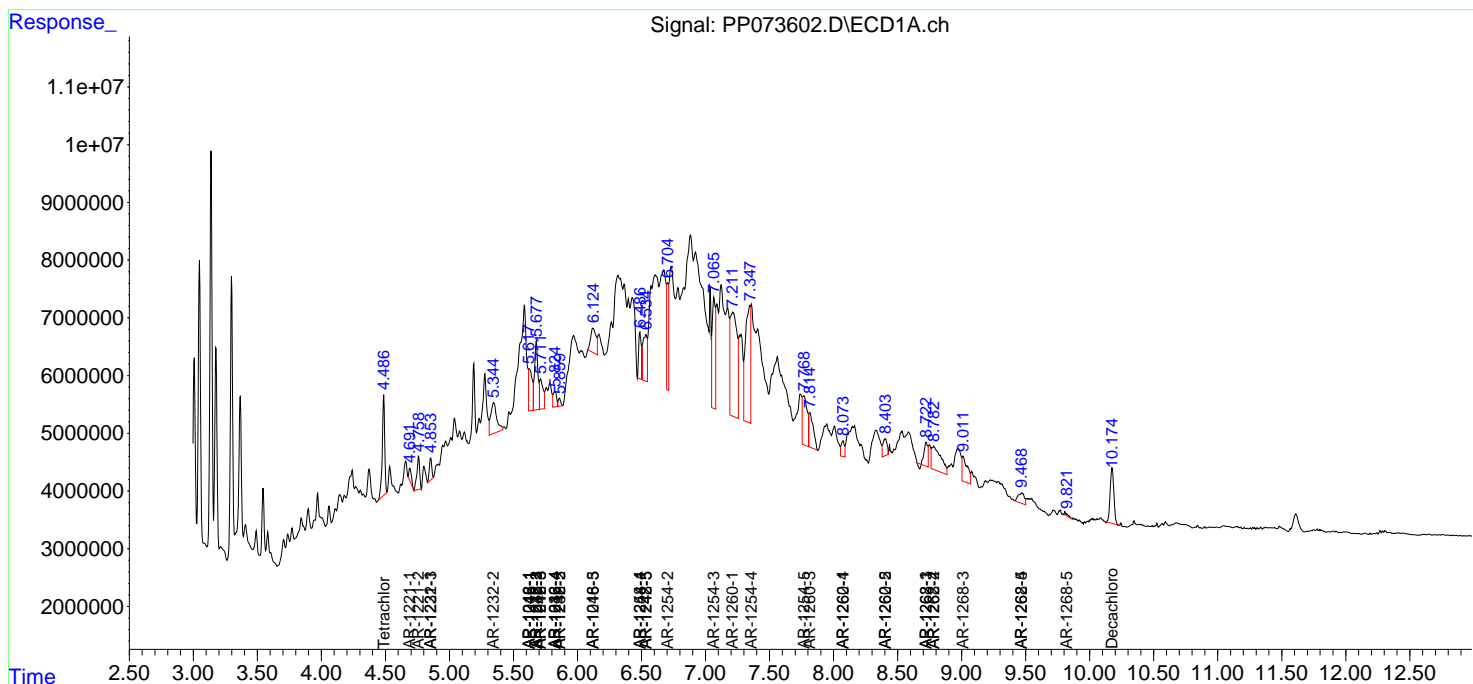
(f)=RT Delta > 1/2 Window (#)=Amounts differ by > 25% (m)=manual int.

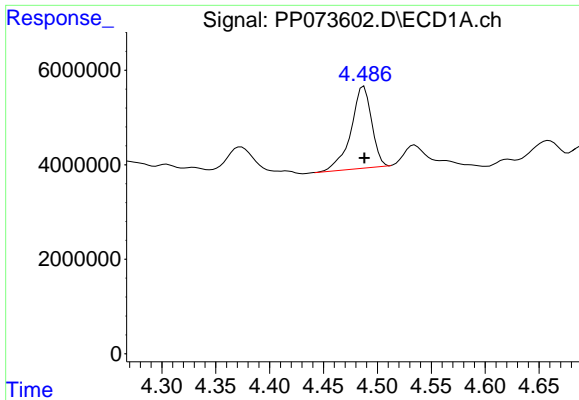
Data Path : Z:\pestpcbsrv\HPCHEM1\ECD\_P\Data\PP070925\  
 Data File : PP073602.D  
 Signal(s) : Signal #1: ECD1A.ch Signal #2: ECD2B.ch  
 Acq On : 08 Jul 2025 12:44  
 Operator : YP\AJ  
 Sample : Q2508-02  
 Misc :  
 ALS Vial : 14 Sample Multiplier: 1

Instrument :  
 ECD\_P  
 ClientSampleId :  
 AUD-25-0106

Integration File signal 1: autoint1.e  
 Integration File signal 2: autoint2.e  
 Quant Time: Jul 09 01:38:50 2025  
 Quant Method : Z:\pestpcbsrv\HPCHEM1\ECD\_P\methods\PP070825.M  
 Quant Title : GC EXTRACTABLES  
 QLast Update : Tue Jul 08 08:35:32 2025  
 Response via : Initial Calibration  
 Integrator: ChemStation

Volume Inj. : 2 µl  
 Signal #1 Phase : ZB-MR1 Signal #2 Phase: ZB-MR2  
 Signal #1 Info : 30Mx0.32mmx 0.50µ Signal #2 Info : 30M x 0.32mm x 0.25µm

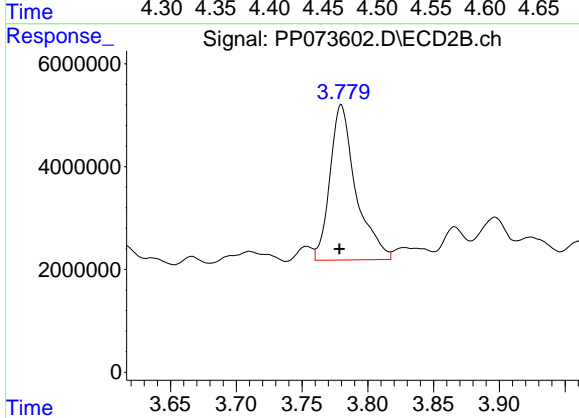




#1 Tetrachloro-m-xylene

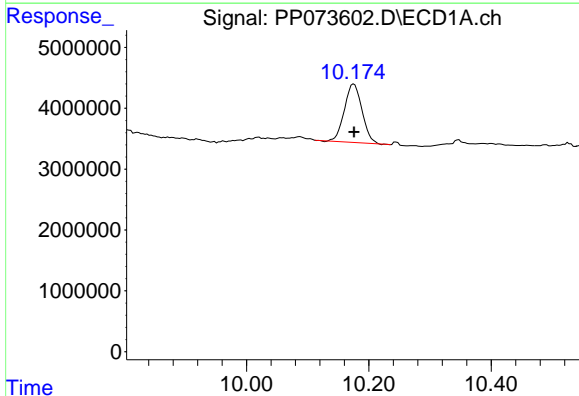
R.T.: 4.488 min  
Delta R.T.: 0.000 min  
Response: 23108699  
Conc: 16.87 ng/ml

Instrument :  
ECD\_P  
ClientSampleId :  
AUD-25-0106



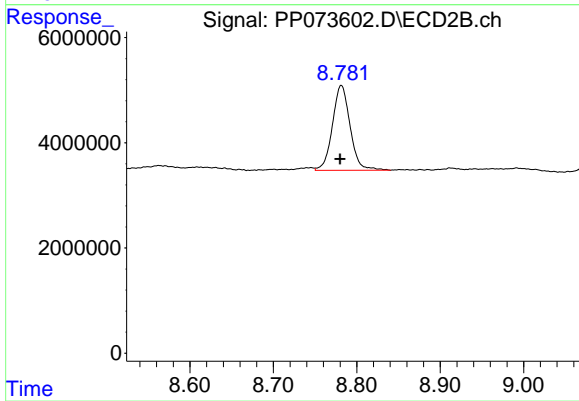
#1 Tetrachloro-m-xylene

R.T.: 3.780 min  
Delta R.T.: 0.001 min  
Response: 41374476  
Conc: 22.46 ng/ml



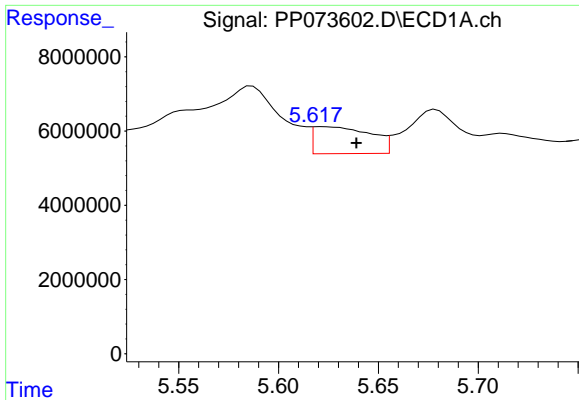
#2 Decachlorobiphenyl

R.T.: 10.176 min  
Delta R.T.: 0.000 min  
Response: 19236628  
Conc: 17.63 ng/ml



#2 Decachlorobiphenyl

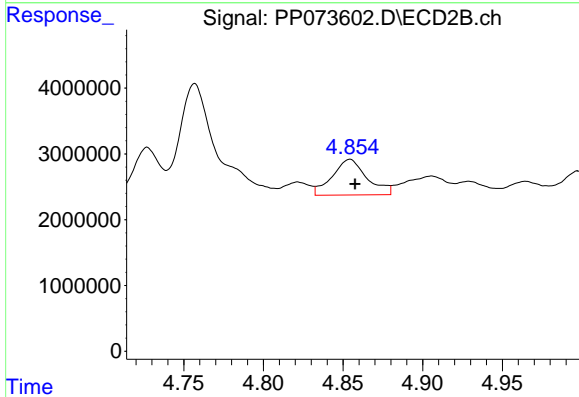
R.T.: 8.781 min  
Delta R.T.: 0.001 min  
Response: 23765453  
Conc: 17.96 ng/ml



#3 AR-1016-1

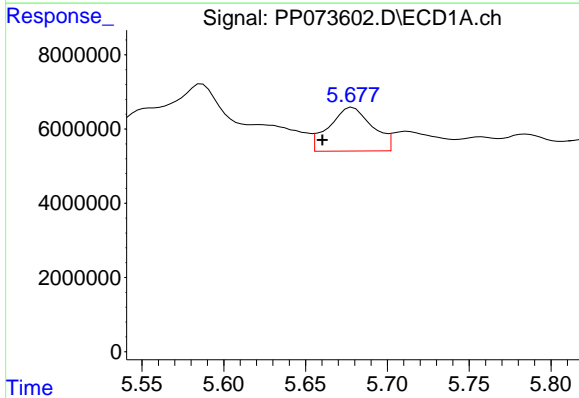
R.T.: 5.621 min  
 Delta R.T.: -0.018 min  
 Response: 14574183  
 Conc: 306.74 ng/ml

Instrument :  
 ECD\_P  
 ClientSampleId :  
 AUD-25-0106



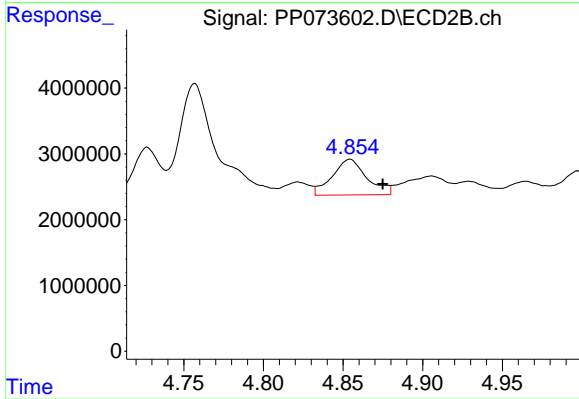
#3 AR-1016-1

R.T.: 4.854 min  
 Delta R.T.: -0.003 min  
 Response: 8210340  
 Conc: 120.43 ng/ml



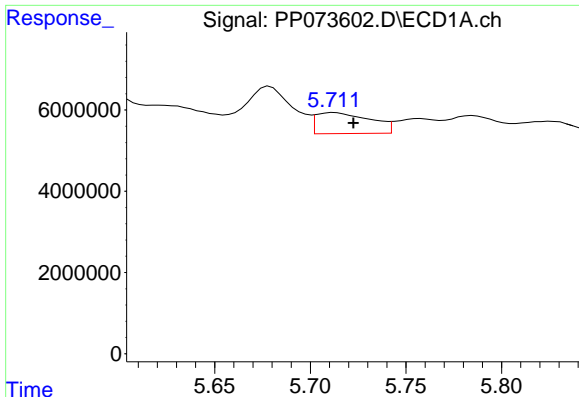
#4 AR-1016-2

R.T.: 5.679 min  
 Delta R.T.: 0.018 min  
 Response: 21659708  
 Conc: 304.15 ng/ml



#4 AR-1016-2

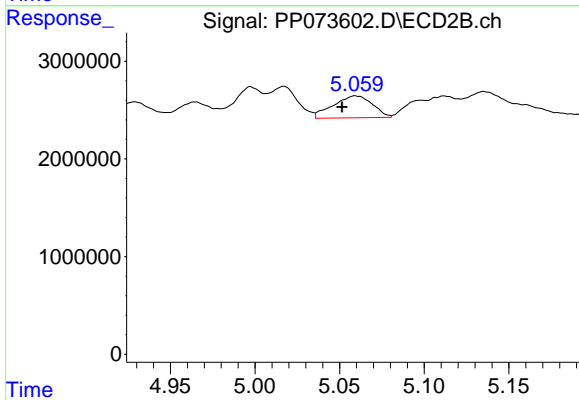
R.T.: 4.854 min  
 Delta R.T.: -0.021 min  
 Response: 8210340  
 Conc: 80.58 ng/ml



#5 AR-1016-3

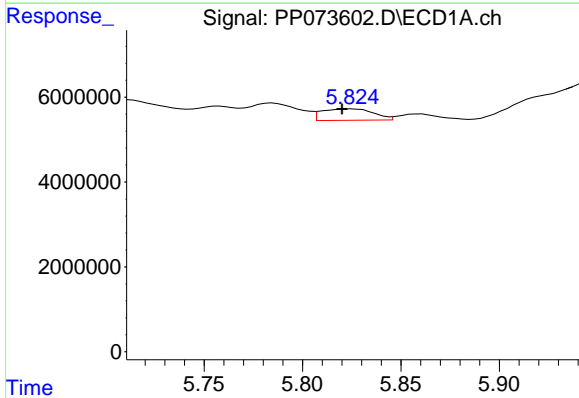
R.T.: 5.712 min  
 Delta R.T.: -0.010 min  
 Response: 10188538  
 Conc: 233.34 ng/ml

Instrument :  
 ECD\_P  
 ClientSampleId :  
 AUD-25-0106



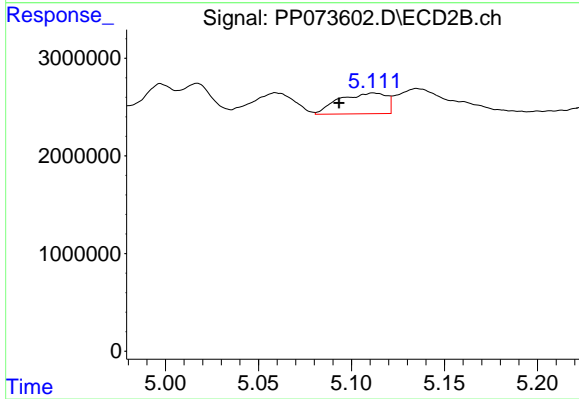
#5 AR-1016-3

R.T.: 5.059 min  
 Delta R.T.: 0.008 min  
 Response: 3630267  
 Conc: 67.10 ng/ml



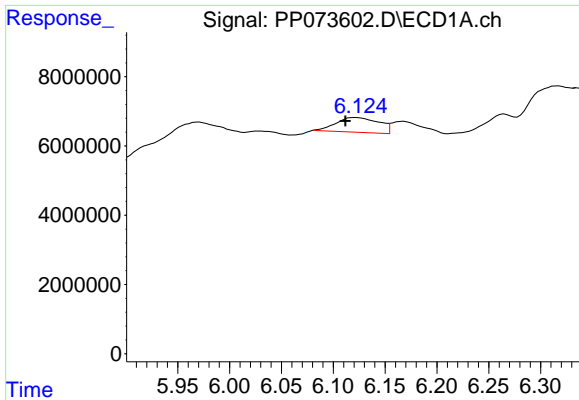
#6 AR-1016-4

R.T.: 5.825 min  
 Delta R.T.: 0.005 min  
 Response: 4911303  
 Conc: 136.63 ng/ml



#6 AR-1016-4

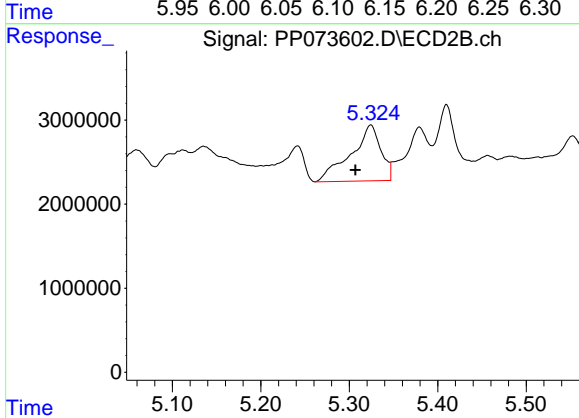
R.T.: 5.112 min  
 Delta R.T.: 0.019 min  
 Response: 3752201  
 Conc: 85.51 ng/ml



#7 AR-1016-5

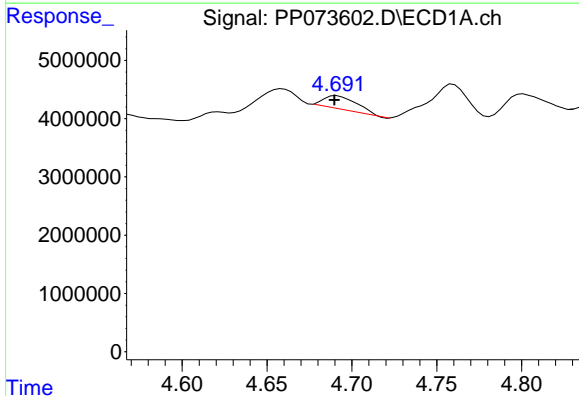
R.T.: 6.122 min  
 Delta R.T.: 0.011 min  
 Response: 12195589  
 Conc: 389.26 ng/ml

Instrument :  
 ECD\_P  
 ClientSampleId :  
 AUD-25-0106



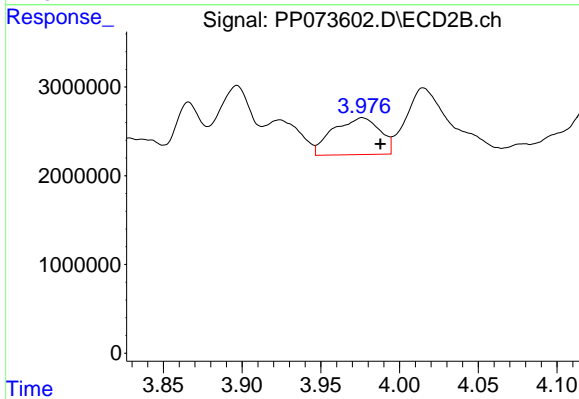
#7 AR-1016-5

R.T.: 5.324 min  
 Delta R.T.: 0.017 min  
 Response: 15679992  
 Conc: 287.27 ng/ml



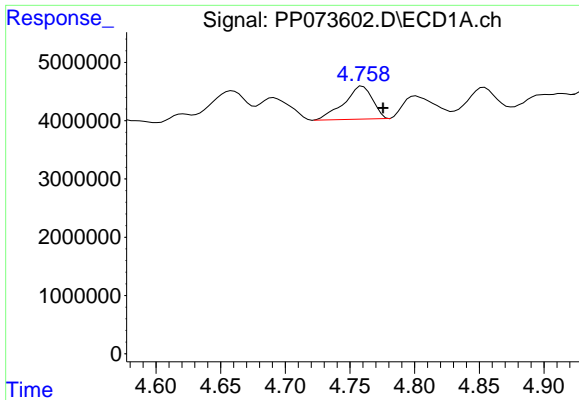
#8 AR-1221-1

R.T.: 4.691 min  
 Delta R.T.: 0.001 min  
 Response: 3089068  
 Conc: 172.90 ng/ml



#8 AR-1221-1

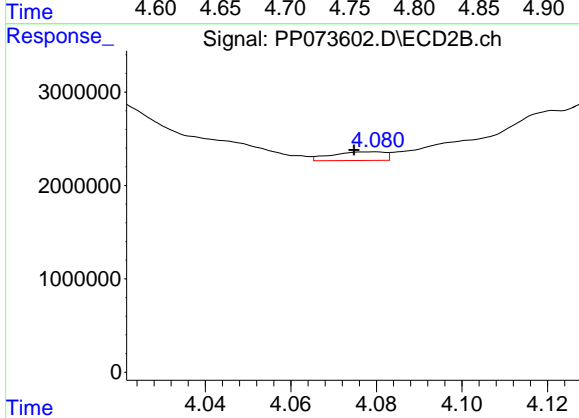
R.T.: 3.976 min  
 Delta R.T.: -0.012 min  
 Response: 8596844  
 Conc: 317.87 ng/ml



#9 AR-1221-2

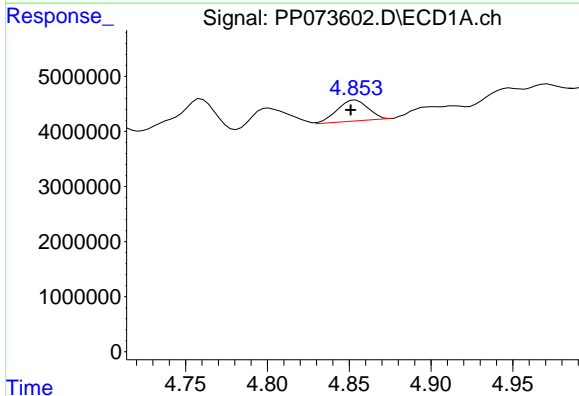
R.T.: 4.760 min  
 Delta R.T.: -0.016 min  
 Response: 8673164  
 Conc: 642.24 ng/ml

Instrument :  
 ECD\_P  
 ClientSampleId :  
 AUD-25-0106



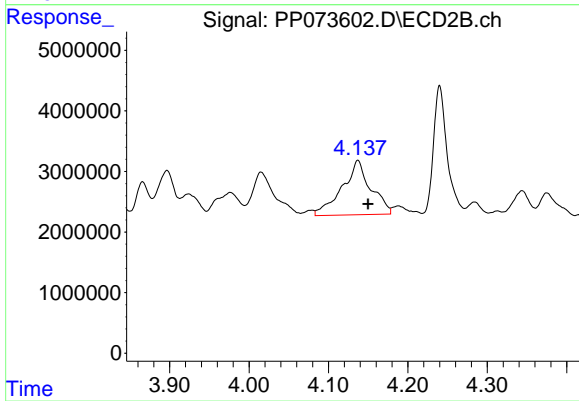
#9 AR-1221-2

R.T.: 4.079 min  
 Delta R.T.: 0.004 min  
 Response: 796625  
 Conc: 39.13 ng/ml



#10 AR-1221-3

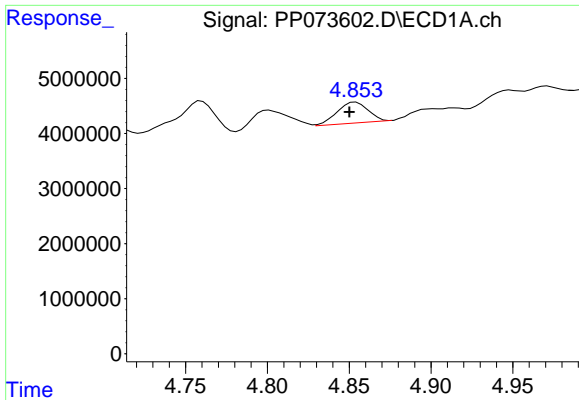
R.T.: 4.854 min  
 Delta R.T.: 0.003 min  
 Response: 4992383  
 Conc: 120.00 ng/ml



#10 AR-1221-3

R.T.: 4.137 min  
 Delta R.T.: -0.013 min  
 Response: 22497523  
 Conc: 366.12 ng/ml

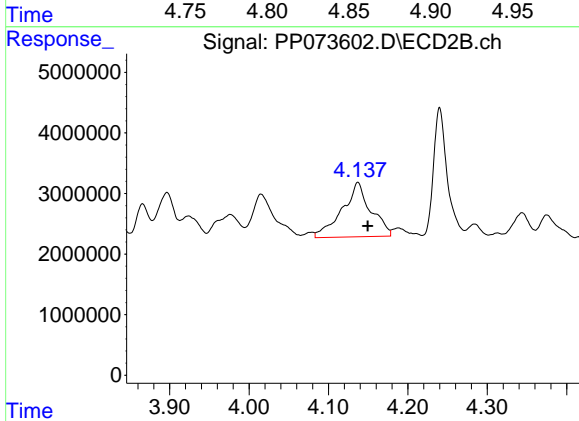




#11 AR-1232-1

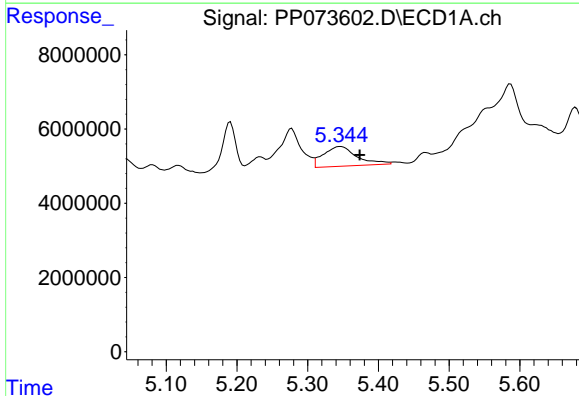
R.T.: 4.854 min  
 Delta R.T.: 0.004 min  
 Response: 4992383  
 Conc: 152.90 ng/ml

Instrument :  
 ECD\_P  
 ClientSampleId :  
 AUD-25-0106



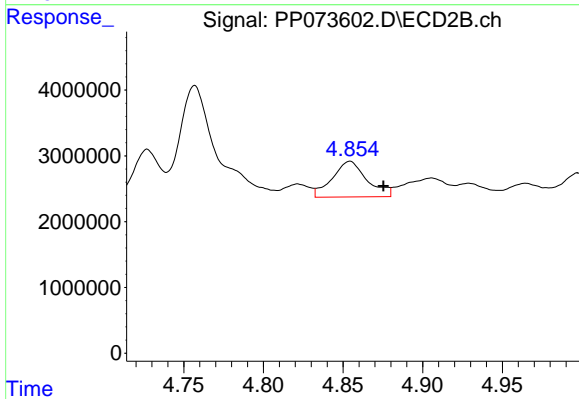
#11 AR-1232-1

R.T.: 4.137 min  
 Delta R.T.: -0.012 min  
 Response: 22497523  
 Conc: 482.63 ng/ml



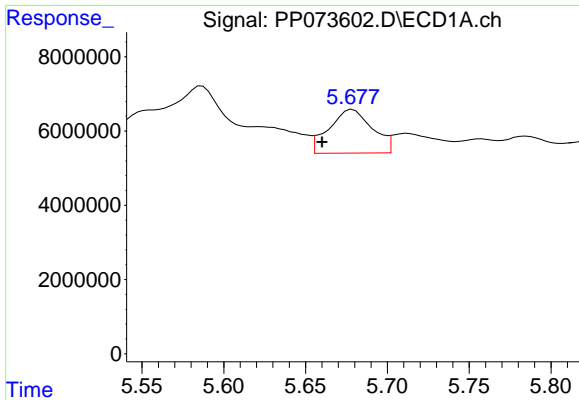
#12 AR-1232-2

R.T.: 5.346 min  
 Delta R.T.: -0.027 min  
 Response: 17503674  
 Conc: 1076.84 ng/ml



#12 AR-1232-2

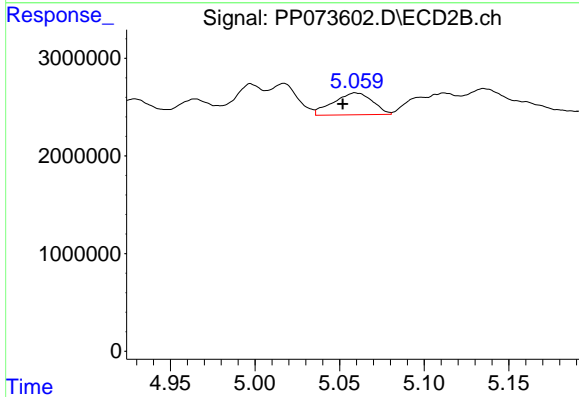
R.T.: 4.854 min  
 Delta R.T.: -0.021 min  
 Response: 8210340  
 Conc: 172.27 ng/ml



#13 AR-1232-3

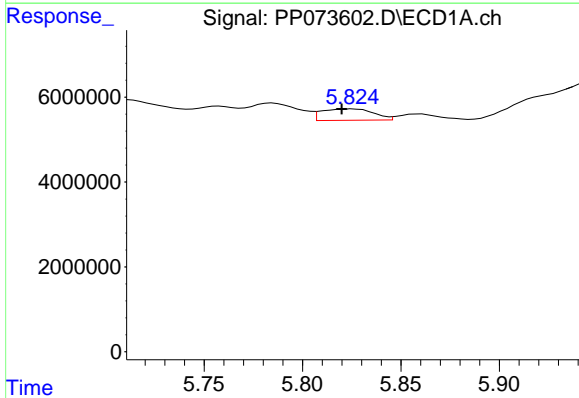
R.T.: 5.679 min  
 Delta R.T.: 0.019 min  
 Response: 21659708  
 Conc: 656.48 ng/ml

Instrument :  
 ECD\_P  
 ClientSampleId :  
 AUD-25-0106



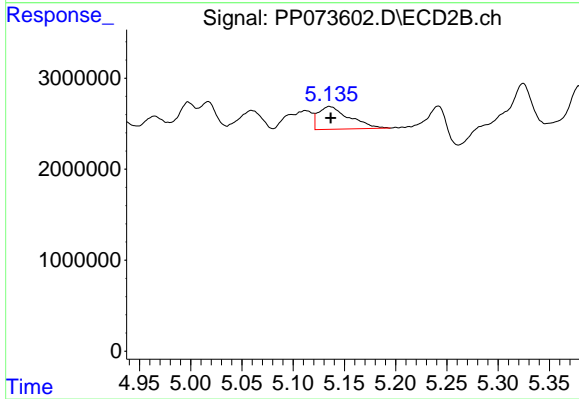
#13 AR-1232-3

R.T.: 5.059 min  
 Delta R.T.: 0.007 min  
 Response: 3630267  
 Conc: 145.04 ng/ml



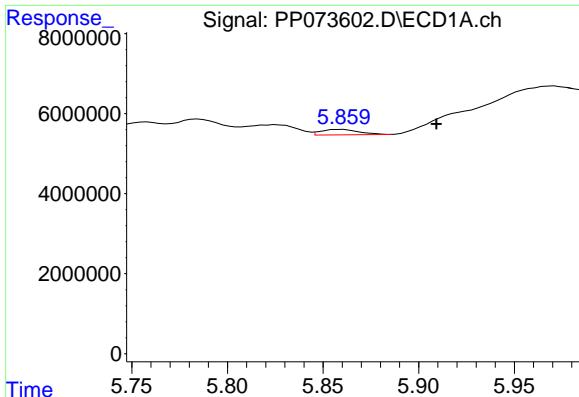
#14 AR-1232-4

R.T.: 5.825 min  
 Delta R.T.: 0.006 min  
 Response: 4911303  
 Conc: 298.65 ng/ml



#14 AR-1232-4

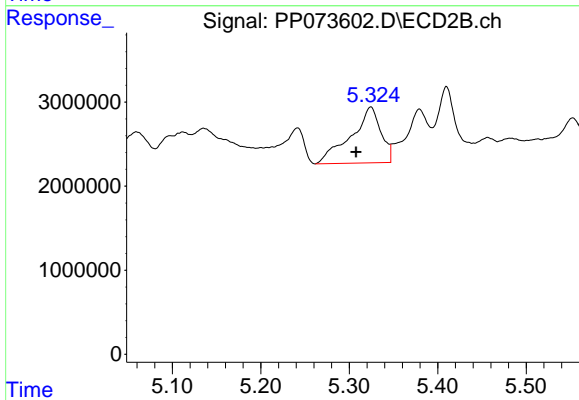
R.T.: 5.135 min  
 Delta R.T.: -0.001 min  
 Response: 5240429  
 Conc: 241.98 ng/ml



#15 AR-1232-5

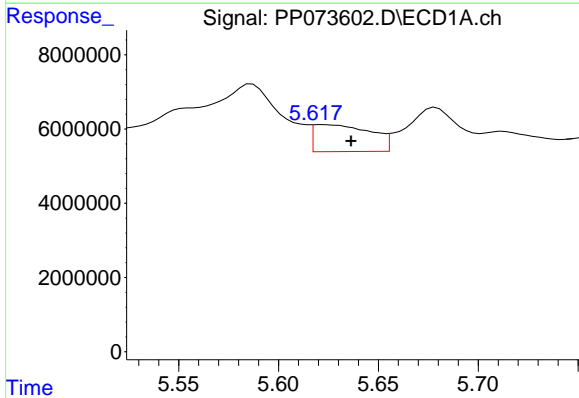
R.T.: 5.860 min  
 Delta R.T.: -0.049 min  
 Response: 1876620  
 Conc: 177.54 ng/ml

Instrument :  
 ECD\_P  
 ClientSampleId :  
 AUD-25-0106



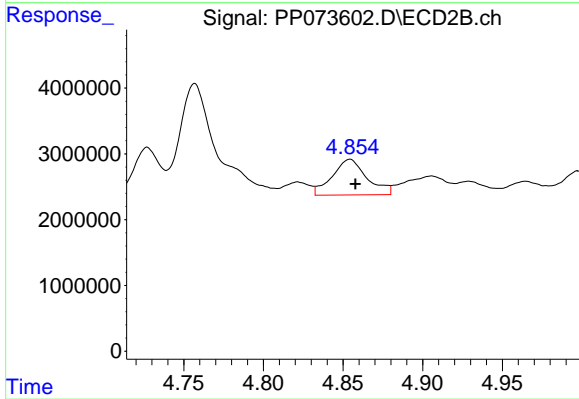
#15 AR-1232-5

R.T.: 5.324 min  
 Delta R.T.: 0.017 min  
 Response: 15679992  
 Conc: 694.93 ng/ml



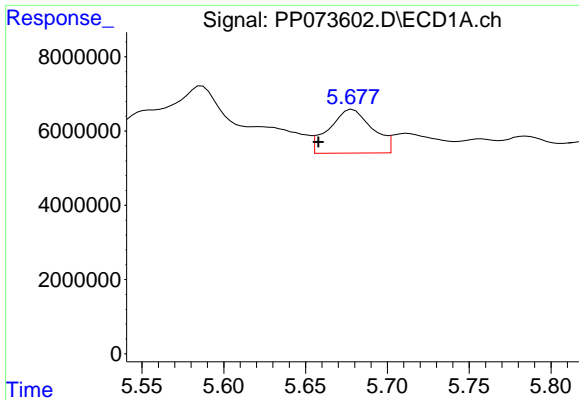
#16 AR-1242-1

R.T.: 5.621 min  
 Delta R.T.: -0.015 min  
 Response: 14574183  
 Conc: 381.64 ng/ml



#16 AR-1242-1

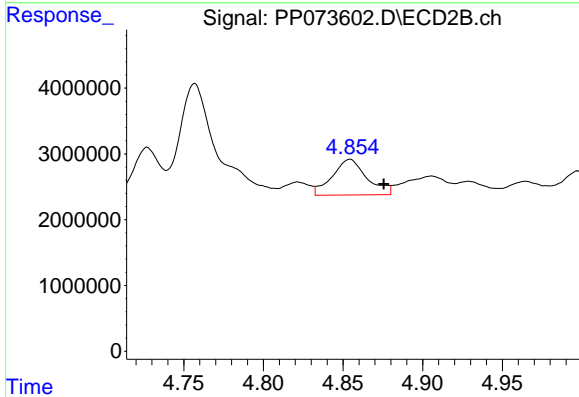
R.T.: 4.854 min  
 Delta R.T.: -0.003 min  
 Response: 8210340  
 Conc: 142.13 ng/ml



#17 AR-1242-2

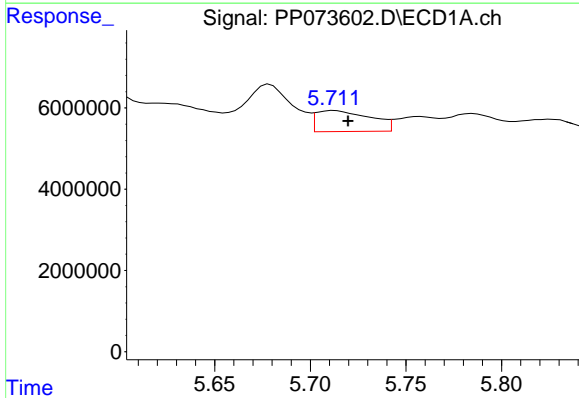
R.T.: 5.679 min  
 Delta R.T.: 0.021 min  
 Response: 21659708  
 Conc: 361.71 ng/ml

Instrument :  
 ECD\_P  
 ClientSampleId :  
 AUD-25-0106



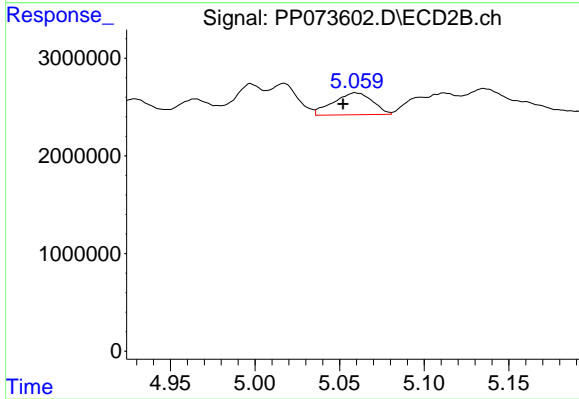
#17 AR-1242-2

R.T.: 4.854 min  
 Delta R.T.: -0.021 min  
 Response: 8210340  
 Conc: 94.97 ng/ml



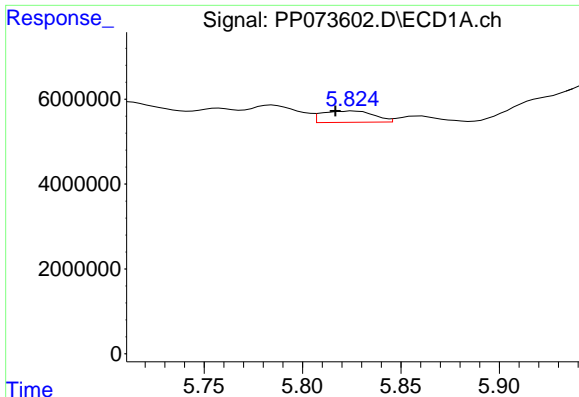
#18 AR-1242-3

R.T.: 5.712 min  
 Delta R.T.: -0.007 min  
 Response: 10188538  
 Conc: 278.22 ng/ml



#18 AR-1242-3

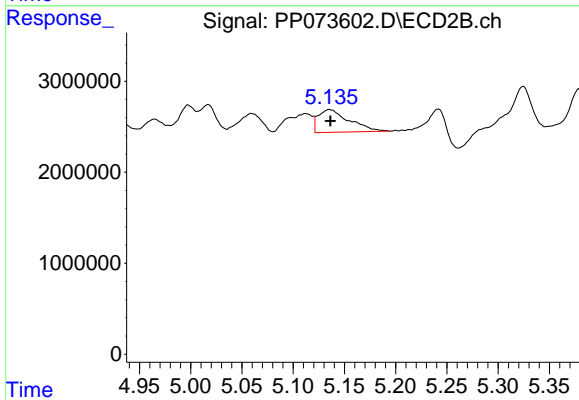
R.T.: 5.059 min  
 Delta R.T.: 0.007 min  
 Response: 3630267  
 Conc: 79.01 ng/ml



#19 AR-1242-4

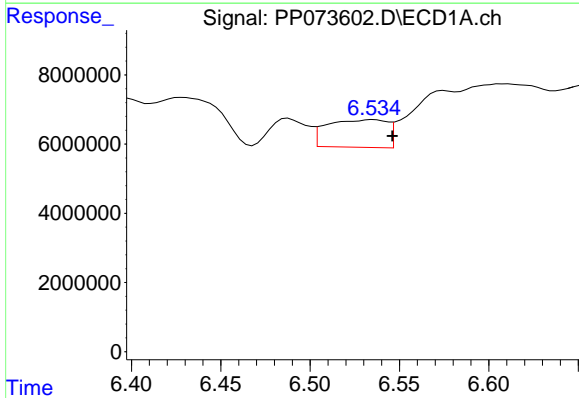
R.T.: 5.825 min  
 Delta R.T.: 0.009 min  
 Response: 4911303  
 Conc: 152.83 ng/ml

Instrument :  
 ECD\_P  
 ClientSampleId :  
 AUD-25-0106



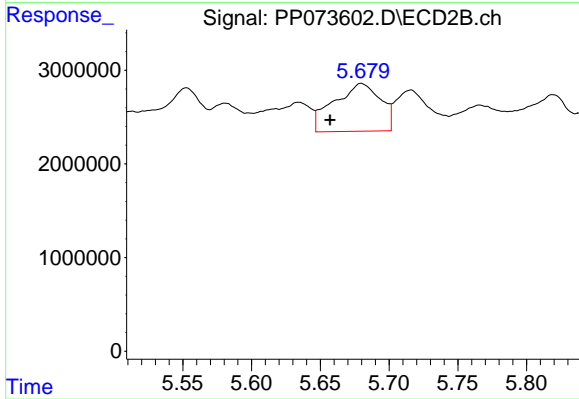
#19 AR-1242-4

R.T.: 5.135 min  
 Delta R.T.: 0.000 min  
 Response: 5240429  
 Conc: 118.39 ng/ml



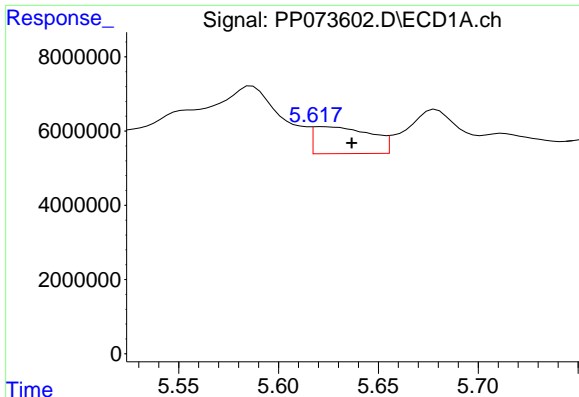
#20 AR-1242-5

R.T.: 6.536 min  
 Delta R.T.: -0.011 min  
 Response: 18695481  
 Conc: 571.08 ng/ml



#20 AR-1242-5

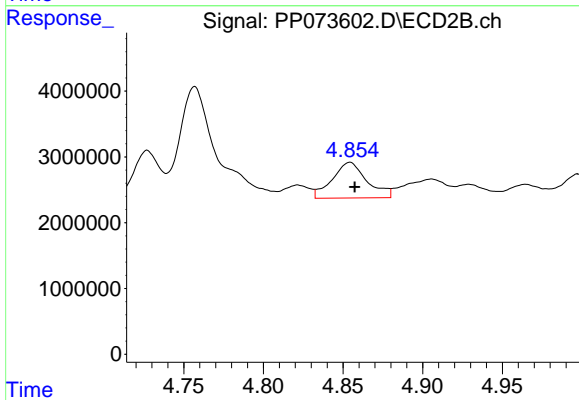
R.T.: 5.680 min  
 Delta R.T.: 0.023 min  
 Response: 12036915  
 Conc: 217.89 ng/ml



#21 AR-1248-1

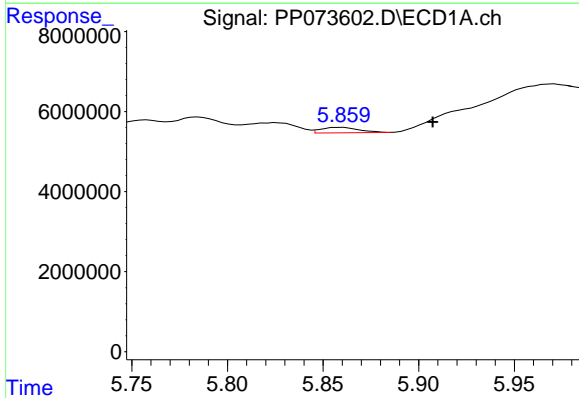
R.T.: 5.621 min  
 Delta R.T.: -0.016 min  
 Response: 14574183  
 Conc: 472.11 ng/ml

Instrument :  
 ECD\_P  
 ClientSampleId :  
 AUD-25-0106



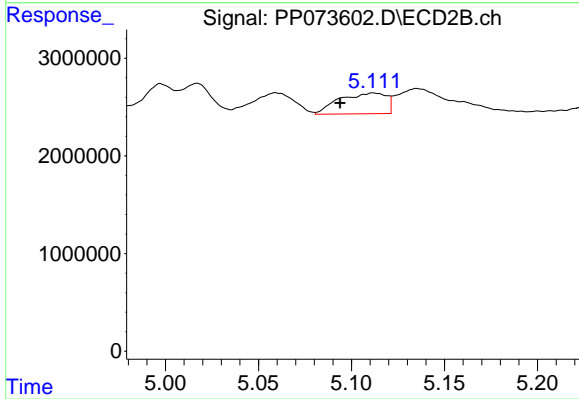
#21 AR-1248-1

R.T.: 4.854 min  
 Delta R.T.: -0.003 min  
 Response: 8210340  
 Conc: 182.88 ng/ml



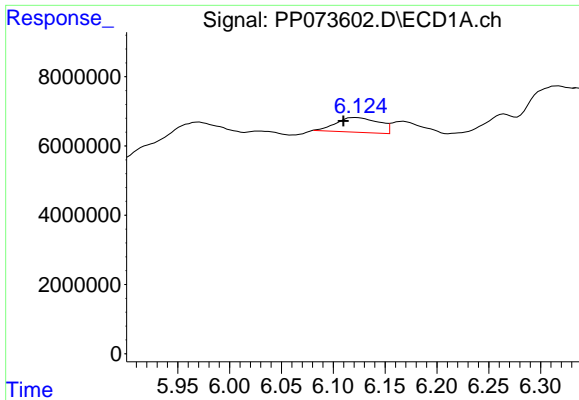
#22 AR-1248-2

R.T.: 5.860 min  
 Delta R.T.: -0.047 min  
 Response: 1876620  
 Conc: 47.01 ng/ml



#22 AR-1248-2

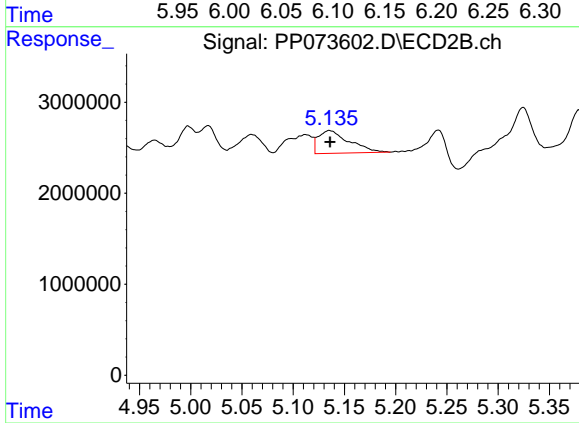
R.T.: 5.112 min  
 Delta R.T.: 0.018 min  
 Response: 3752201  
 Conc: 60.98 ng/ml



#23 AR-1248-3

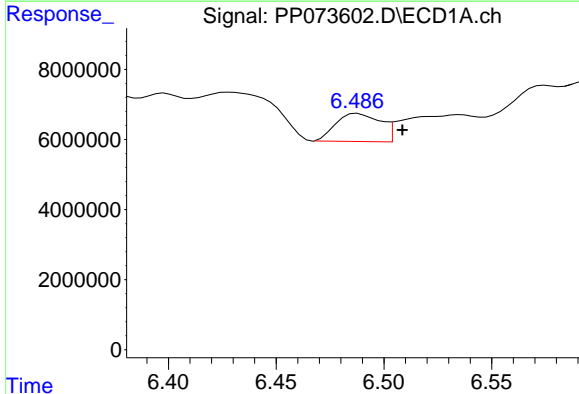
R.T.: 6.122 min  
 Delta R.T.: 0.013 min  
 Response: 12195589  
 Conc: 274.62 ng/ml

Instrument :  
 ECD\_P  
 ClientSampleId :  
 AUD-25-0106



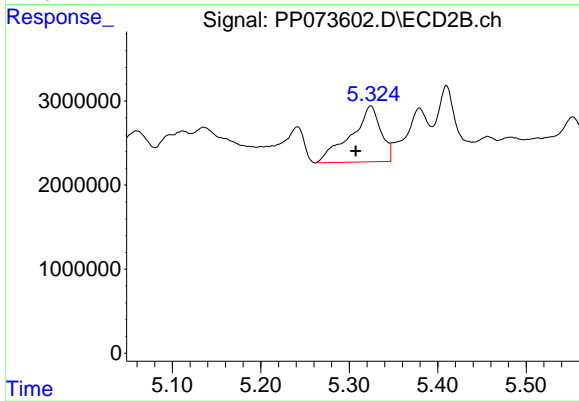
#23 AR-1248-3

R.T.: 5.135 min  
 Delta R.T.: 0.000 min  
 Response: 5240429  
 Conc: 81.80 ng/ml



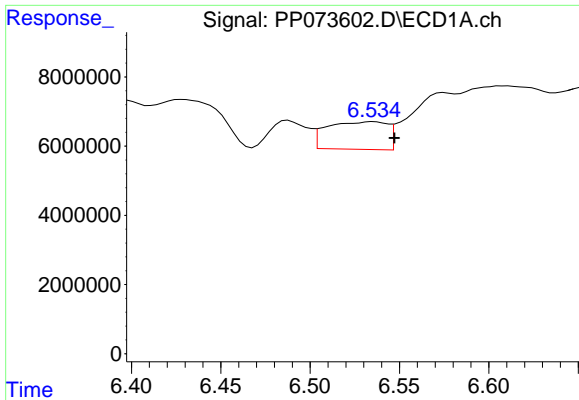
#24 AR-1248-4

R.T.: 6.488 min  
 Delta R.T.: -0.021 min  
 Response: 11481097  
 Conc: 208.44 ng/ml



#24 AR-1248-4

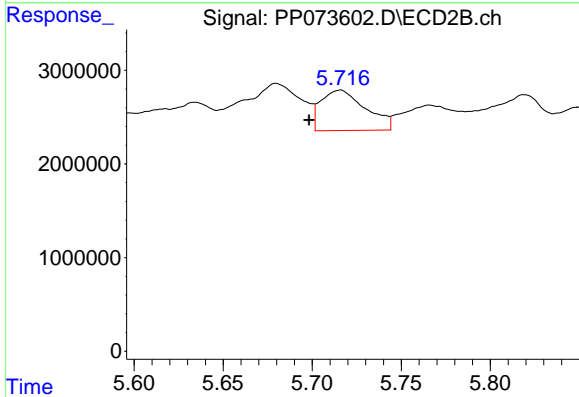
R.T.: 5.324 min  
 Delta R.T.: 0.017 min  
 Response: 15679992  
 Conc: 208.02 ng/ml



#25 AR-1248-5

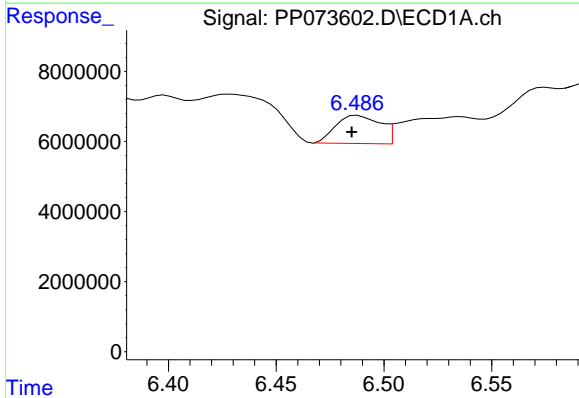
R.T.: 6.536 min  
 Delta R.T.: -0.012 min  
 Response: 18695481  
 Conc: 347.56 ng/ml

Instrument :  
 ECD\_P  
 ClientSampleId :  
 AUD-25-0106



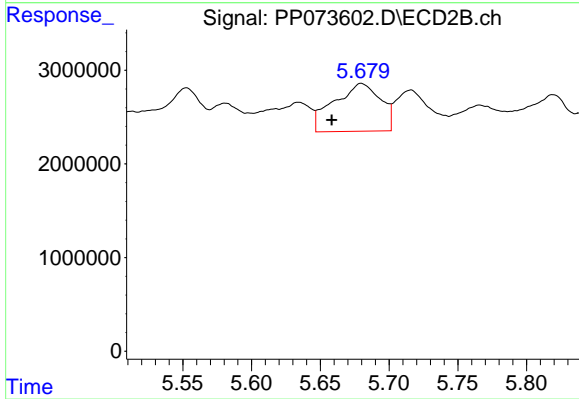
#25 AR-1248-5

R.T.: 5.716 min  
 Delta R.T.: 0.018 min  
 Response: 7545942  
 Conc: 101.16 ng/ml



#26 AR-1254-1

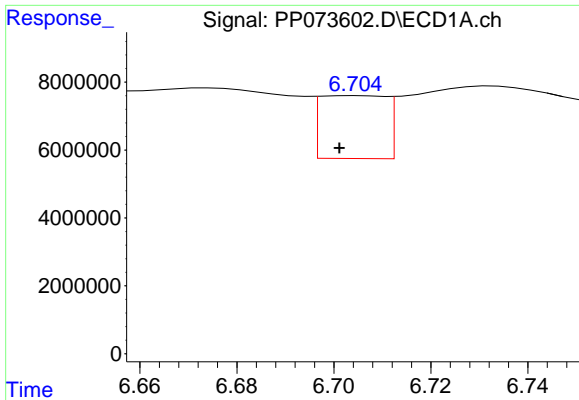
R.T.: 6.488 min  
 Delta R.T.: 0.003 min  
 Response: 11481097  
 Conc: 214.24 ng/ml



#26 AR-1254-1

R.T.: 5.680 min  
 Delta R.T.: 0.022 min  
 Response: 12036915  
 Conc: 103.74 ng/ml

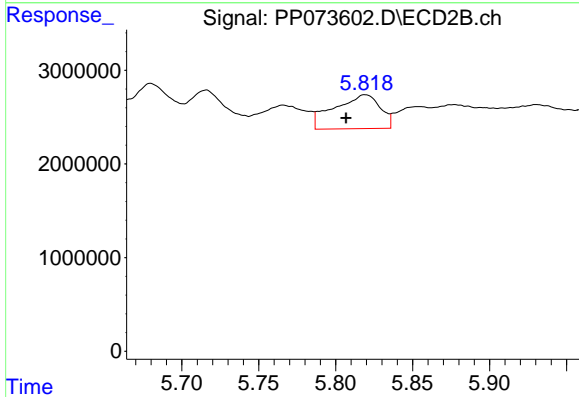




#27 AR-1254-2

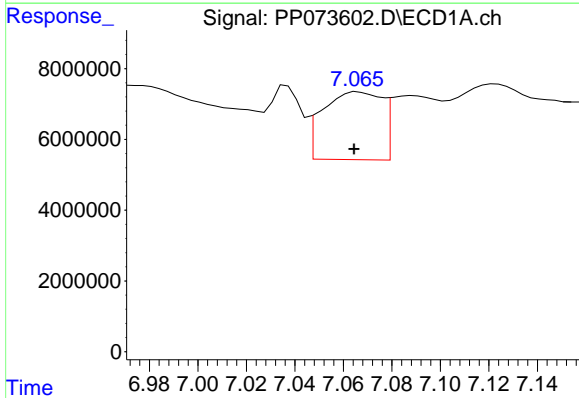
R.T.: 6.705 min  
 Delta R.T.: 0.003 min  
 Response: 17481827  
 Conc: 209.89 ng/ml

Instrument :  
 ECD\_P  
 ClientSampleId :  
 AUD-25-0106



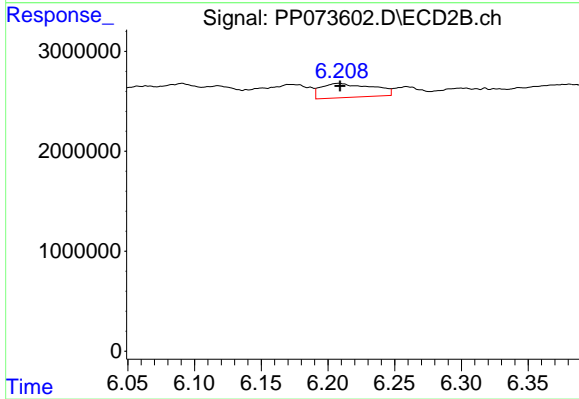
#27 AR-1254-2

R.T.: 5.819 min  
 Delta R.T.: 0.012 min  
 Response: 7535364  
 Conc: 74.89 ng/ml



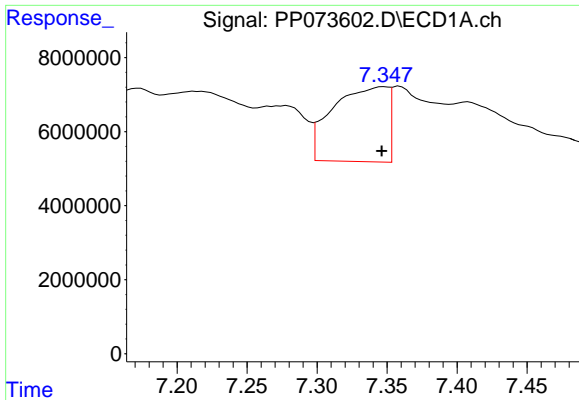
#28 AR-1254-3

R.T.: 7.066 min  
 Delta R.T.: 0.002 min  
 Response: 32369554  
 Conc: 366.45 ng/ml



#28 AR-1254-3

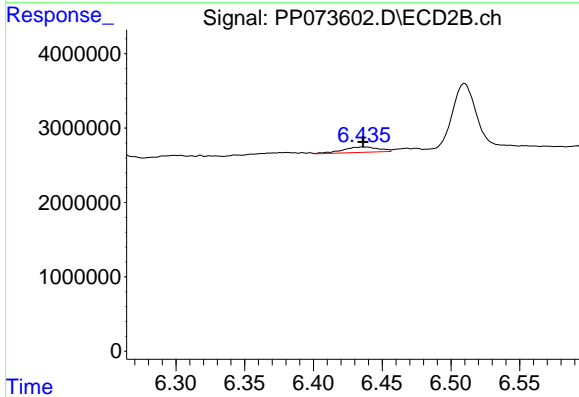
R.T.: 6.208 min  
 Delta R.T.: 0.000 min  
 Response: 3775840  
 Conc: 24.45 ng/ml



#29 AR-1254-4

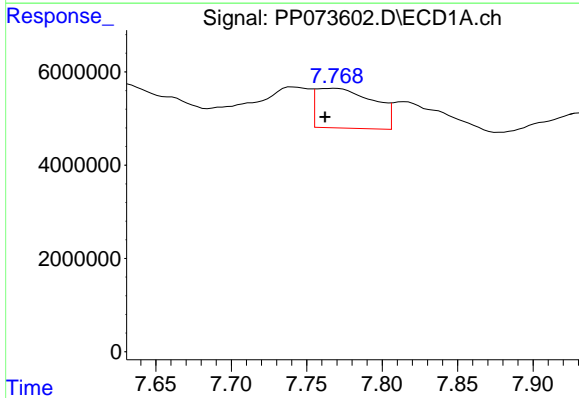
R.T.: 7.348 min  
 Delta R.T.: 0.002 min  
 Response: 55346045  
 Conc: 703.55 ng/ml

Instrument :  
 ECD\_P  
 ClientSampleId :  
 AUD-25-0106



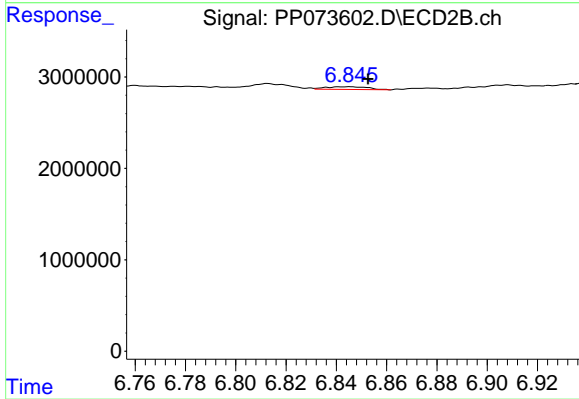
#29 AR-1254-4

R.T.: 6.436 min  
 Delta R.T.: 0.000 min  
 Response: 1329366  
 Conc: 14.06 ng/ml



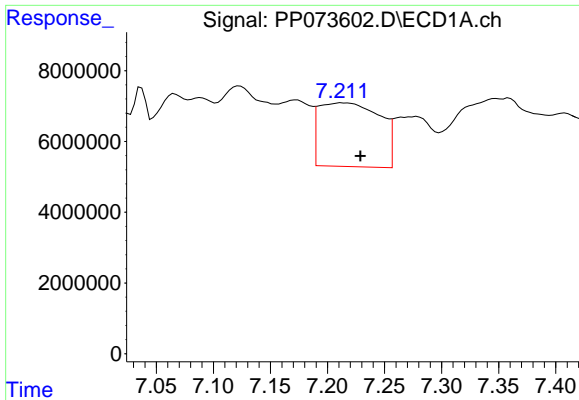
#30 AR-1254-5

R.T.: 7.769 min  
 Delta R.T.: 0.007 min  
 Response: 22526261  
 Conc: 305.73 ng/ml



#30 AR-1254-5

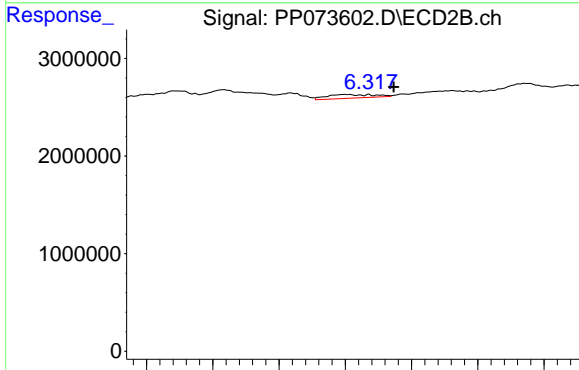
R.T.: 6.845 min  
 Delta R.T.: -0.008 min  
 Response: 351015  
 Conc: 2.63 ng/ml



#31 AR-1260-1

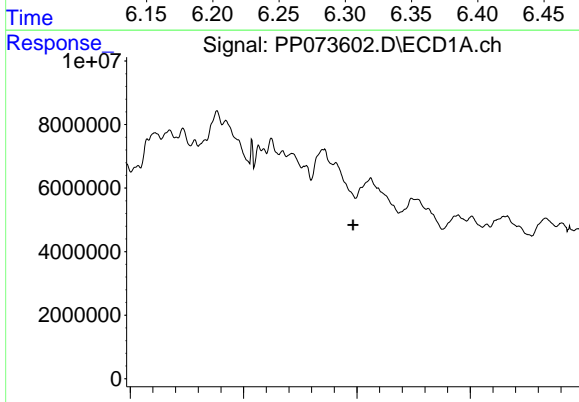
R.T.: 7.212 min  
 Delta R.T.: -0.017 min  
 Response: 66649673  
 Conc: 1130.40 ng/ml

Instrument :  
 ECD\_P  
 ClientSampleId :  
 AUD-25-0106



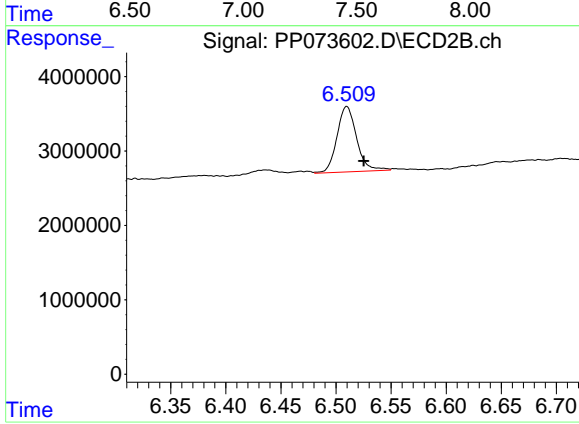
#31 AR-1260-1

R.T.: 6.299 min  
 Delta R.T.: -0.037 min  
 Response: 943973  
 Conc: 9.68 ng/ml



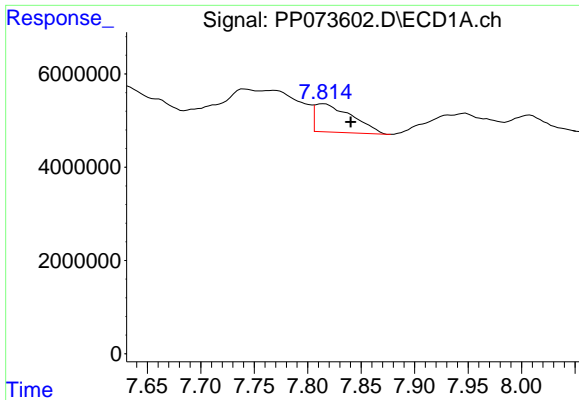
#32 AR-1260-2

R.T.: 0.000 min  
 Exp R.T. : 7.483 min  
 Response: 0  
 Conc: N.D.



#32 AR-1260-2

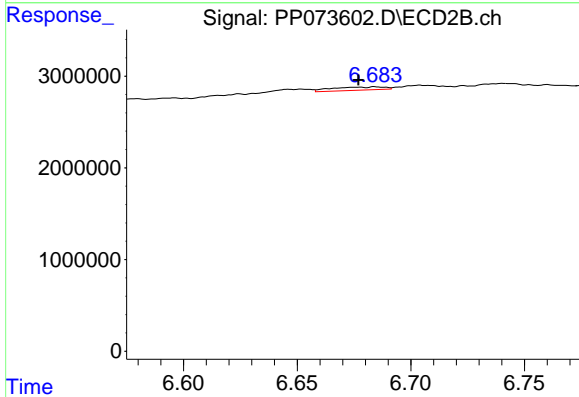
R.T.: 6.510 min  
 Delta R.T.: -0.015 min  
 Response: 10951098  
 Conc: 89.15 ng/ml



#33 AR-1260-3

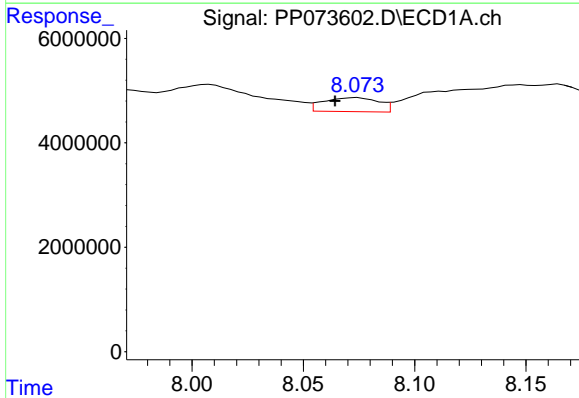
R.T.: 7.815 min  
 Delta R.T.: -0.025 min  
 Response: 14703021  
 Conc: 201.22 ng/ml

Instrument :  
 ECD\_P  
 ClientSampleId :  
 AUD-25-0106



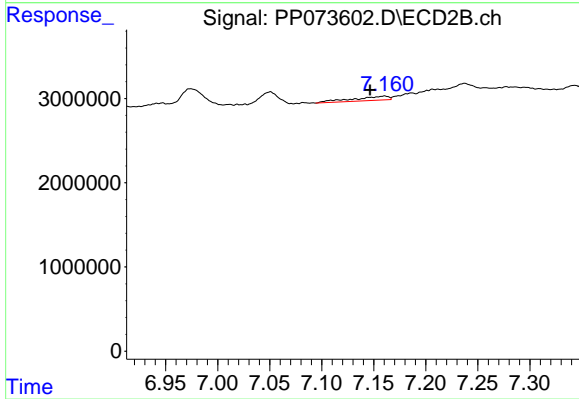
#33 AR-1260-3

R.T.: 6.684 min  
 Delta R.T.: 0.008 min  
 Response: 570735  
 Conc: 5.21 ng/ml



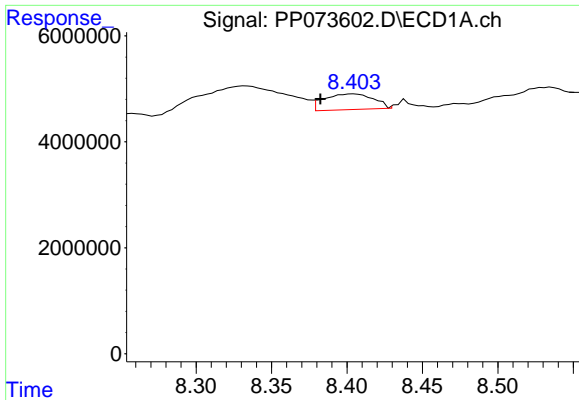
#34 AR-1260-4

R.T.: 8.074 min  
 Delta R.T.: 0.010 min  
 Response: 4626782  
 Conc: 70.85 ng/ml



#34 AR-1260-4

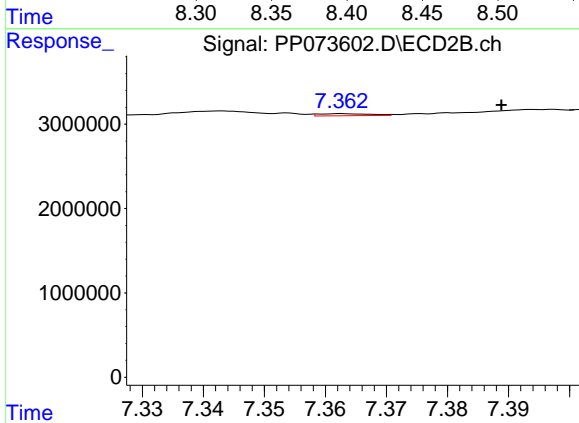
R.T.: 7.160 min  
 Delta R.T.: 0.014 min  
 Response: 1163530  
 Conc: 13.01 ng/ml



#35 AR-1260-5

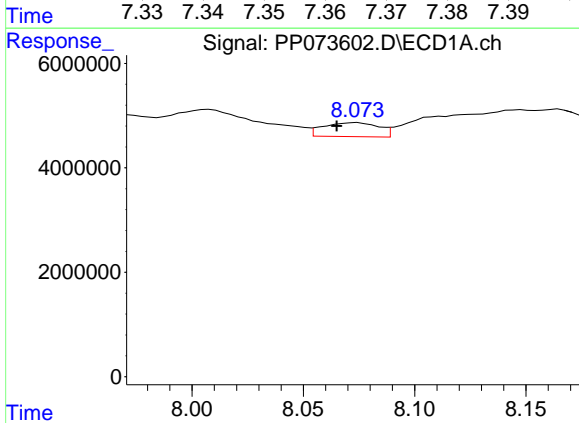
R.T.: 8.404 min  
 Delta R.T.: 0.022 min  
 Response: 6723934  
 Conc: 44.57 ng/ml

Instrument :  
 ECD\_P  
 ClientSampleId :  
 AUD-25-0106



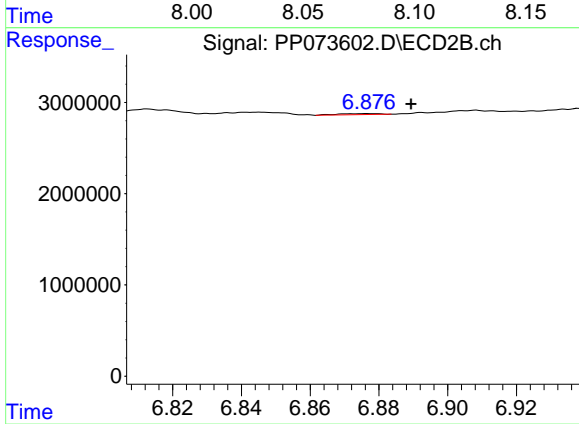
#35 AR-1260-5

R.T.: 7.363 min  
 Delta R.T.: -0.026 min  
 Response: 147266  
 Conc: 0.66 ng/ml



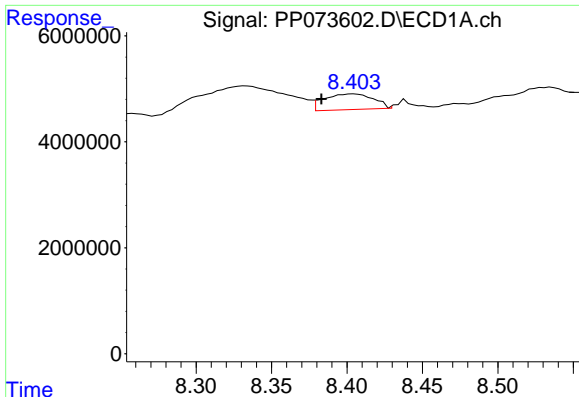
#36 AR-1262-1

R.T.: 8.074 min  
 Delta R.T.: 0.009 min  
 Response: 4626782  
 Conc: 53.16 ng/ml



#36 AR-1262-1

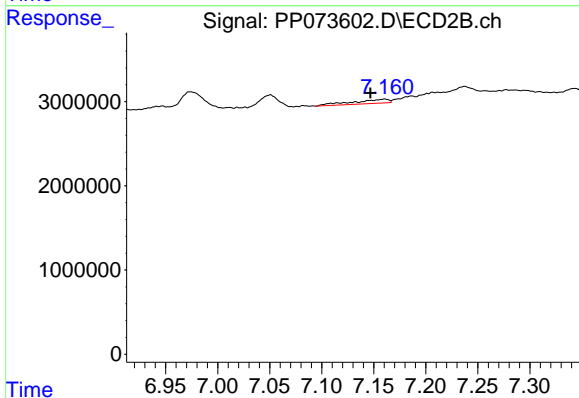
R.T.: 6.877 min  
 Delta R.T.: -0.012 min  
 Response: 95564  
 Conc: 0.65 ng/ml



#37 AR-1262-2

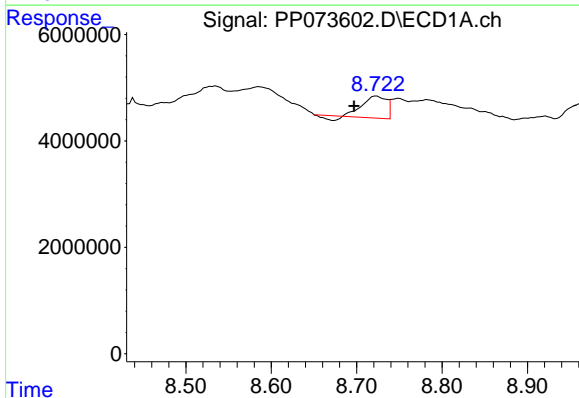
R.T.: 8.404 min  
 Delta R.T.: 0.021 min  
 Response: 6723934  
 Conc: 33.95 ng/ml

Instrument :  
 ECD\_P  
 ClientSampleId :  
 AUD-25-0106



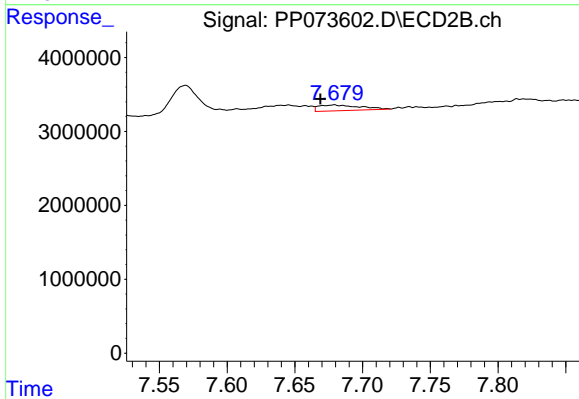
#37 AR-1262-2

R.T.: 7.160 min  
 Delta R.T.: 0.014 min  
 Response: 1163530  
 Conc: 9.10 ng/ml



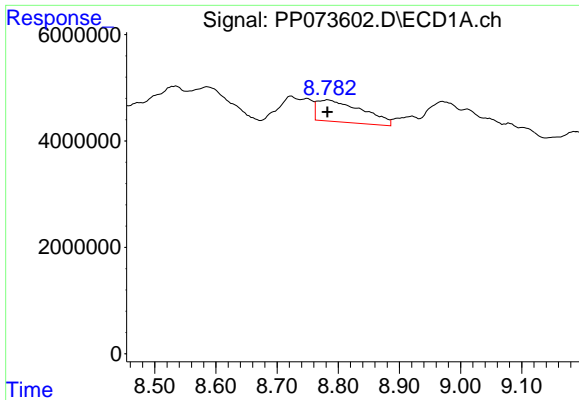
#38 AR-1262-3

R.T.: 8.723 min  
 Delta R.T.: 0.026 min  
 Response: 7392961  
 Conc: 58.80 ng/ml



#38 AR-1262-3

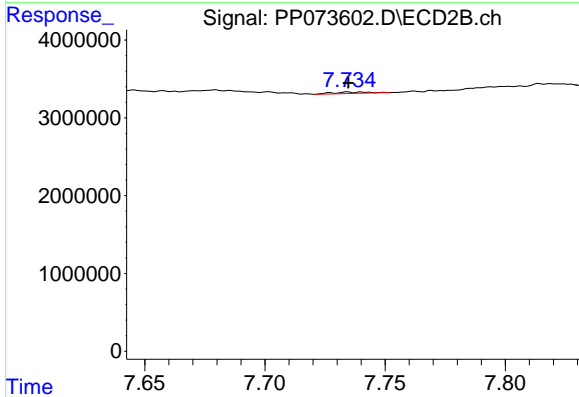
R.T.: 7.679 min  
 Delta R.T.: 0.010 min  
 Response: 1633176  
 Conc: 14.32 ng/ml



#39 AR-1262-4

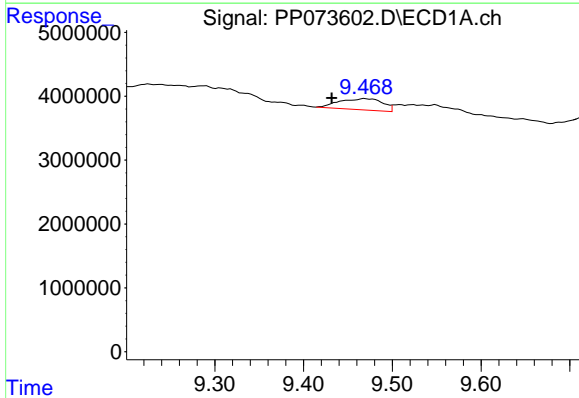
R.T.: 8.783 min  
 Delta R.T.: 0.001 min  
 Response: 21161950  
 Conc: 226.91 ng/ml

Instrument :  
 ECD\_P  
 ClientSampleId :  
 AUD-25-0106



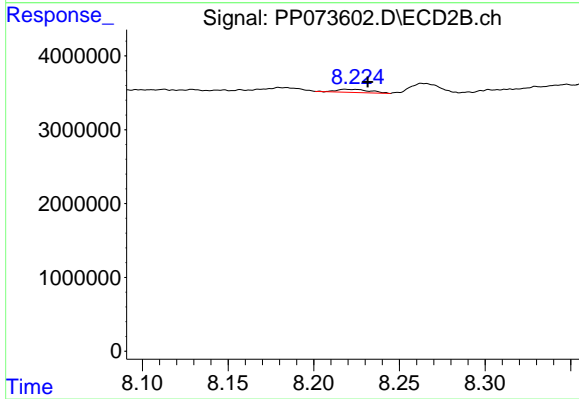
#39 AR-1262-4

R.T.: 7.734 min  
 Delta R.T.: 0.000 min  
 Response: 201886  
 Conc: 1.10 ng/ml



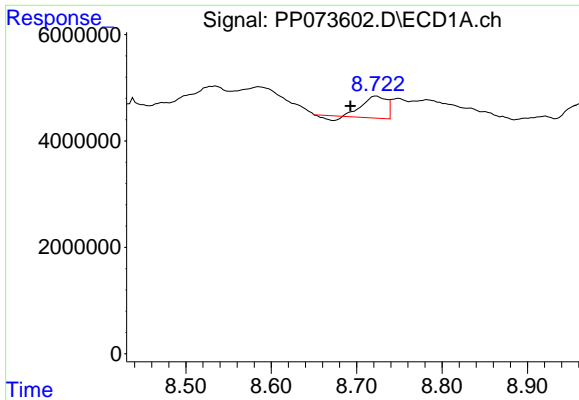
#40 AR-1262-5

R.T.: 9.469 min  
 Delta R.T.: 0.037 min  
 Response: 5937760  
 Conc: 93.67 ng/ml



#40 AR-1262-5

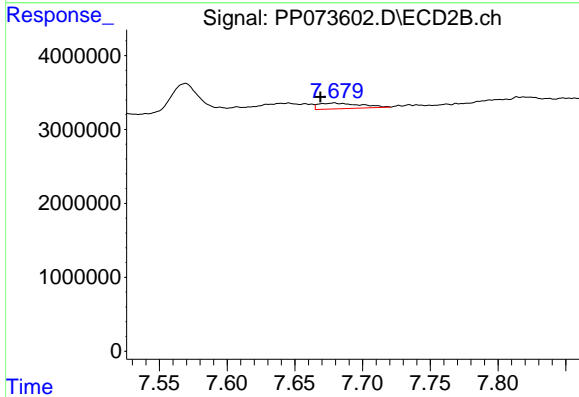
R.T.: 8.218 min  
 Delta R.T.: -0.013 min  
 Response: 559071  
 Conc: 6.62 ng/ml



#41 AR-1268-1

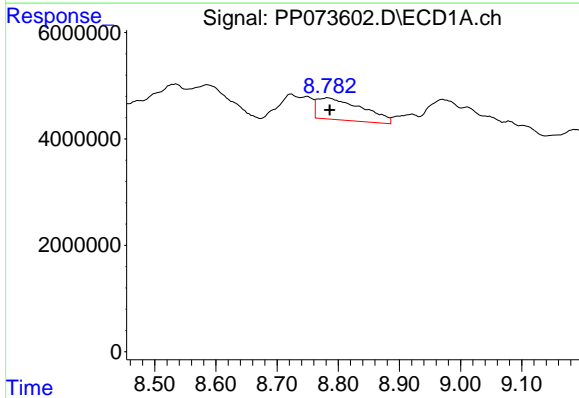
R.T.: 8.723 min  
 Delta R.T.: 0.030 min  
 Response: 7392961  
 Conc: 33.12 ng/ml

Instrument :  
 ECD\_P  
 ClientSampleId :  
 AUD-25-0106



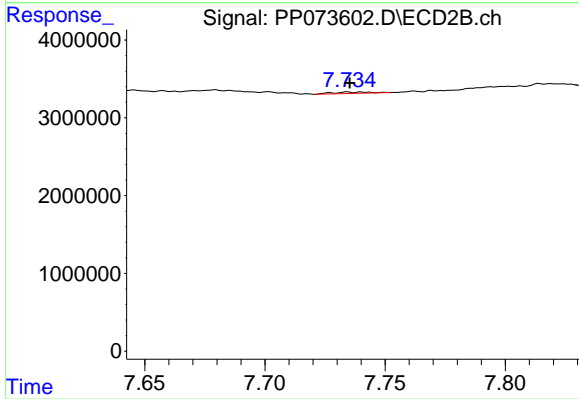
#41 AR-1268-1

R.T.: 7.679 min  
 Delta R.T.: 0.010 min  
 Response: 1633176  
 Conc: 5.31 ng/ml



#42 AR-1268-2

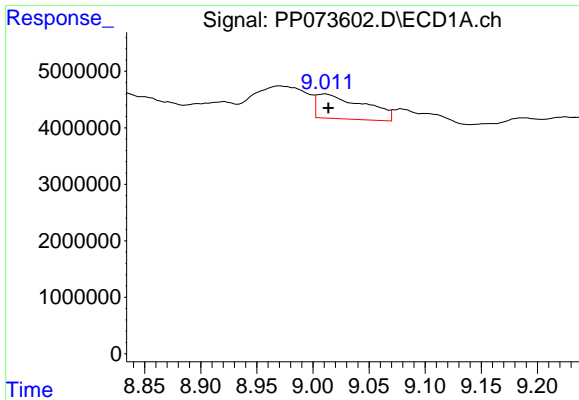
R.T.: 8.783 min  
 Delta R.T.: -0.003 min  
 Response: 21161950  
 Conc: 111.08 ng/ml



#42 AR-1268-2

R.T.: 7.734 min  
 Delta R.T.: -0.001 min  
 Response: 201886  
 Conc: 0.76 ng/ml

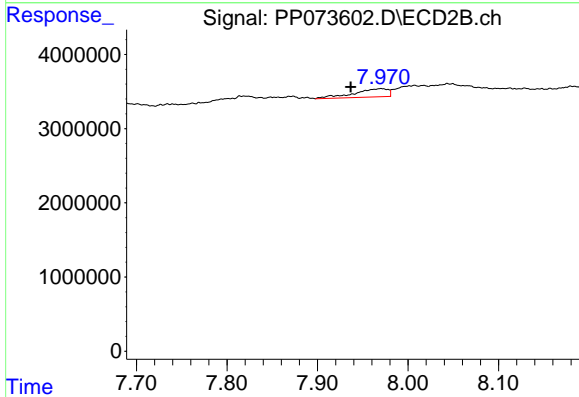




#43 AR-1268-3

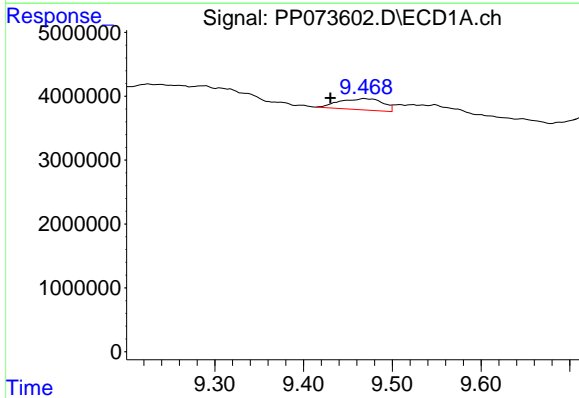
R.T.: 9.012 min  
 Delta R.T.: -0.002 min  
 Response: 12778422  
 Conc: 77.18 ng/ml

Instrument :  
 ECD\_P  
 ClientSampleId :  
 AUD-25-0106



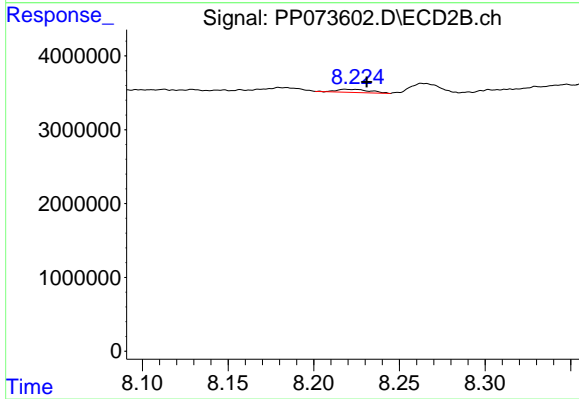
#43 AR-1268-3

R.T.: 7.970 min  
 Delta R.T.: 0.034 min  
 Response: 2863395  
 Conc: 12.69 ng/ml



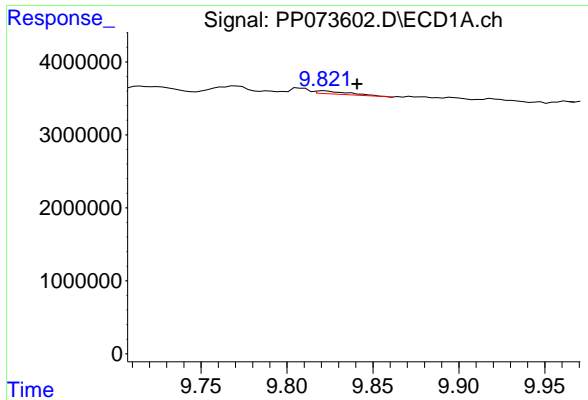
#44 AR-1268-4

R.T.: 9.469 min  
 Delta R.T.: 0.039 min  
 Response: 5937760  
 Conc: 85.38 ng/ml



#44 AR-1268-4

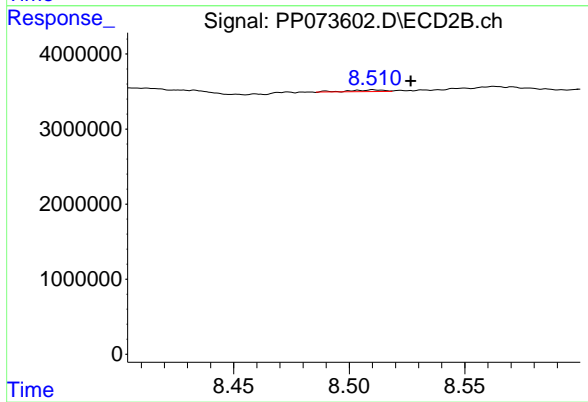
R.T.: 8.218 min  
 Delta R.T.: -0.012 min  
 Response: 559071  
 Conc: 6.01 ng/ml



#45 AR-1268-5

R.T.: 9.822 min  
Delta R.T.: -0.019 min  
Response: 574558  
Conc: 1.25 ng/ml

Instrument :  
ECD\_P  
ClientSampleId :  
AUD-25-0106



#45 AR-1268-5

R.T.: 8.511 min  
Delta R.T.: -0.016 min  
Response: 182292  
Conc: 0.30 ng/ml