

Data Path : Z:\pestpcbsrv\HPCHEM1\ECD_P\Data\PP070925\
 Data File : PP073603.D
 Signal(s) : Signal #1: ECD1A.ch Signal #2: ECD2B.ch
 Acq On : 08 Jul 2025 13:00
 Operator : YP\AJ
 Sample : Q2487-15
 Misc :
 ALS Vial : 15 Sample Multiplier: 1

Instrument :
 ECD_P
 ClientSampleId :
 G1(0-6)

Integration File signal 1: autoint1.e
 Integration File signal 2: autoint2.e
 Quant Time: Jul 09 01:39:07 2025
 Quant Method : Z:\pestpcbsrv\HPCHEM1\ECD_P\methods\PP070825.M
 Quant Title : GC EXTRACTABLES
 QLast Update : Tue Jul 08 08:35:32 2025
 Response via : Initial Calibration
 Integrator: ChemStation

Volume Inj. : 2 µl
 Signal #1 Phase : ZB-MR1 Signal #2 Phase: ZB-MR2
 Signal #1 Info : 30Mx0.32mmx 0.50µ Signal #2 Info : 30M x 0.32mm x 0.25µm

Compound	RT#1	RT#2	Resp#1	Resp#2	ng/ml	ng/ml

System Monitoring Compounds						
1) SA Tetrachlo...	4.487	3.779	24126602	39840241	17.617	21.625
2) SA Decachlor...	10.176	8.781	39020046	44305285	35.764	33.485
Target Compounds						
3) L1 AR-1016-1	5.659	4.854	7308098	5187917	153.811	76.097 #
4) L1 AR-1016-2	5.659	4.874	7308098	4968334	102.620	48.764 #
5) L1 AR-1016-3	5.722	5.074	2356229	16966017	53.964	313.568 #
6) L1 AR-1016-4	5.819	5.074	3242912	16966017	90.217	386.638 #
7) L1 AR-1016-5	6.110	5.305	5366488	4713325	171.287	86.352 #
8) L2 AR-1221-1	4.690	3.989	610198	13554029	34.153	501.167 #
9) L2 AR-1221-2	4.733f	4.056	341500	10766811	25.288	528.814 #
10) L2 AR-1221-3	4.848	4.149	703090	2468924	16.899	40.179 #
11) L3 AR-1232-1	4.848	4.149	703090	2468924	21.534	52.965 #
12) L3 AR-1232-2	5.375	4.874	4359129	4968334	268.177	104.246 #
13) L3 AR-1232-3	5.659	5.074	7308098	16966017	221.501	677.854 #
14) L3 AR-1232-4	5.819	5.139	3242912	1466785	197.196	67.730 #
15) L3 AR-1232-5	5.910	5.305	2510023	4713325	237.459	208.892
16) L4 AR-1242-1	5.659	4.854	7308098	5187917	191.370	89.811 #
17) L4 AR-1242-2	5.659	4.874	7308098	4968334	122.042	57.468 #
18) L4 AR-1242-3	5.722	5.074	2356229	16966017	64.341	369.255 #
19) L4 AR-1242-4	5.819	5.139	3242912	1466785	100.912	33.138 #
20) L4 AR-1242-5	6.569	5.656	13049192	38328010	398.608	693.814 #
21) L5 AR-1248-1	5.659	4.854	7308098	5187917	236.734	115.557 #
22) L5 AR-1248-2	5.910	5.074	2510023	16966017	62.871	275.706 #
23) L5 AR-1248-3	6.110	5.139	5366488	1466785	120.841	22.895 #
24) L5 AR-1248-4	6.486	5.305	15458273	4713325	280.649	62.530 #
25) L5 AR-1248-5	6.569	5.698	13049192	4359645	242.592	58.447 #
26) L6 AR-1254-1	6.486	5.656	15458273	38328010	288.457	330.328
27) L6 AR-1254-2	6.704	5.805	24005963	17233014	288.225	171.262 #
28) L6 AR-1254-3	7.066	6.207	42622216	65058072	482.525	421.234
29) L6 AR-1254-4	7.348	6.434	18007369	10843684	228.906	114.676 #
30) L6 AR-1254-5	7.763	6.850	56024143	67018260	760.373	502.217 #
31) L7 AR-1260-1	7.227	6.338	43318666	40306360	734.697	413.143 #
32) L7 AR-1260-2	7.480	6.525	42768806	39296427	446.253	319.906 #
33) L7 AR-1260-3	7.839	6.676	17872294	33484994	244.589	305.900 #
34) L7 AR-1260-4	8.058	7.146	28146324	17081017	431.032	191.045 #
35) L7 AR-1260-5	8.381	7.389	32360163	59272788	214.515	263.743
36) L8 AR-1262-1	8.058	6.886	28146324	20168273	323.420	136.557 #
37) L8 AR-1262-2	8.381	7.146	32360163	17081017	163.412	133.624
38) L8 AR-1262-3	8.699	7.668	28994514	17606671	230.618	154.419 #
39) L8 AR-1262-4	8.779	7.733	19762065	34713687	211.897	188.611
40) L8 AR-1262-5	9.428	8.230	11931580	10820832	188.227	128.155 #
41) L9 AR-1268-1	8.699	7.668	28994514	17606671	129.890	57.280 #

Data Path : Z:\pestpcbsrv\HPCHEM1\ECD_P\Data\PP070925\
 Data File : PP073603.D
 Signal(s) : Signal #1: ECD1A.ch Signal #2: ECD2B.ch
 Acq On : 08 Jul 2025 13:00
 Operator : YP\AJ
 Sample : Q2487-15
 Misc :
 ALS Vial : 15 Sample Multiplier: 1

Instrument :
 ECD_P
 ClientSampleId :
 G1(0-6)

Integration File signal 1: autoint1.e
 Integration File signal 2: autoint2.e
 Quant Time: Jul 09 01:39:07 2025
 Quant Method : Z:\pestpcbsrv\HPCHEM1\ECD_P\methods\PP070825.M
 Quant Title : GC EXTRACTABLES
 QLast Update : Tue Jul 08 08:35:32 2025
 Response via : Initial Calibration
 Integrator: ChemStation

Volume Inj. : 2 µl
 Signal #1 Phase : ZB-MR1 Signal #2 Phase: ZB-MR2
 Signal #1 Info : 30Mx0.32mmx 0.50µ Signal #2 Info : 30M x 0.32mm x 0.25µm

	Compound	RT#1	RT#2	Resp#1	Resp#2	ng/ml	ng/ml
42)	L9 AR-1268-2	8.779	7.733	19762065	34713687	103.735	130.656 #
43)	L9 AR-1268-3	9.013	7.936	11672637	13319422	70.497	59.045
44)	L9 AR-1268-4	9.428	8.230	11931580	10820832	171.569	116.393 #
45)	L9 AR-1268-5	9.840	8.526	30346673	32911118	65.833	53.379

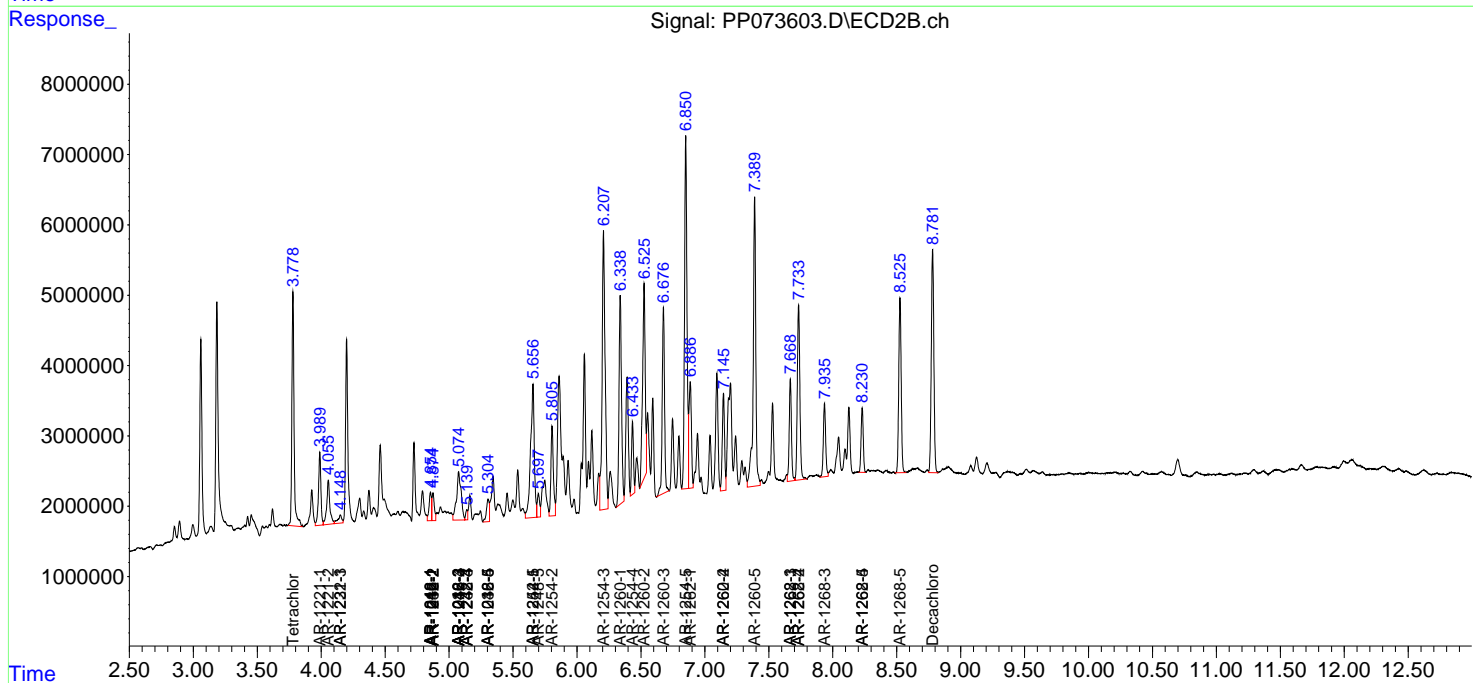
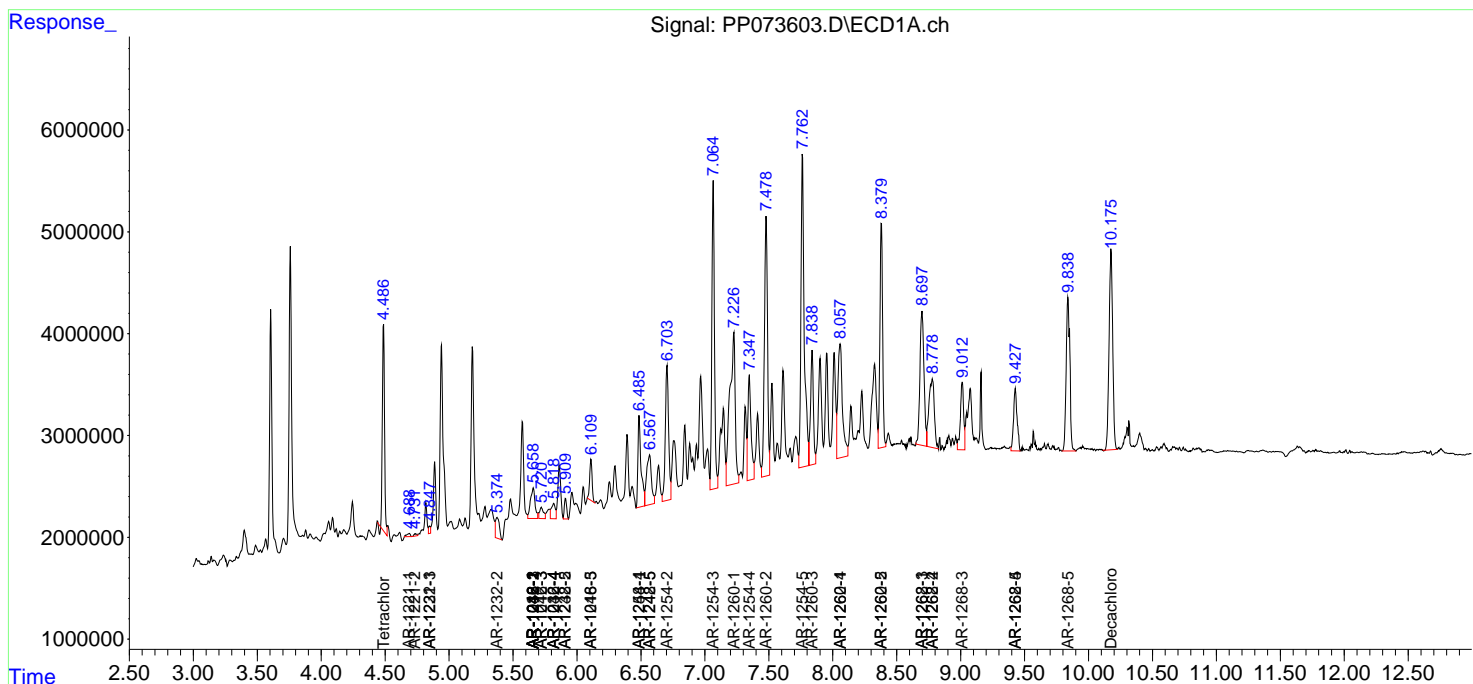
(f)=RT Delta > 1/2 Window (#)=Amounts differ by > 25% (m)=manual int.

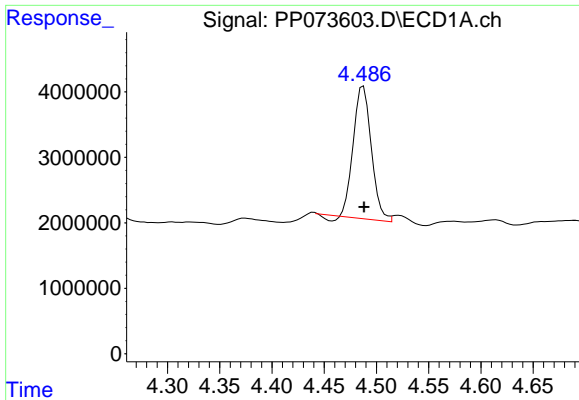
Data Path : Z:\pestpcbsrv\HPCHEM1\ECD_P\Data\PP070925\
 Data File : PP073603.D
 Signal(s) : Signal #1: ECD1A.ch Signal #2: ECD2B.ch
 Acq On : 08 Jul 2025 13:00
 Operator : YP\AJ
 Sample : Q2487-15
 Misc :
 ALS Vial : 15 Sample Multiplier: 1

Instrument :
 ECD_P
 ClientSampleId :
 G1(0-6)

Integration File signal 1: autoint1.e
 Integration File signal 2: autoint2.e
 Quant Time: Jul 09 01:39:07 2025
 Quant Method : Z:\pestpcbsrv\HPCHEM1\ECD_P\methods\PP070825.M
 Quant Title : GC EXTRACTABLES
 QLast Update : Tue Jul 08 08:35:32 2025
 Response via : Initial Calibration
 Integrator: ChemStation

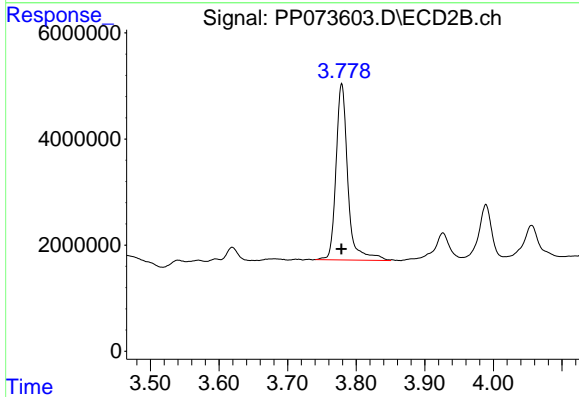
Volume Inj. : 2 µl
 Signal #1 Phase : ZB-MR1 Signal #2 Phase: ZB-MR2
 Signal #1 Info : 30Mx0.32mmx 0.50µ Signal #2 Info : 30M x 0.32mm x 0.25µm



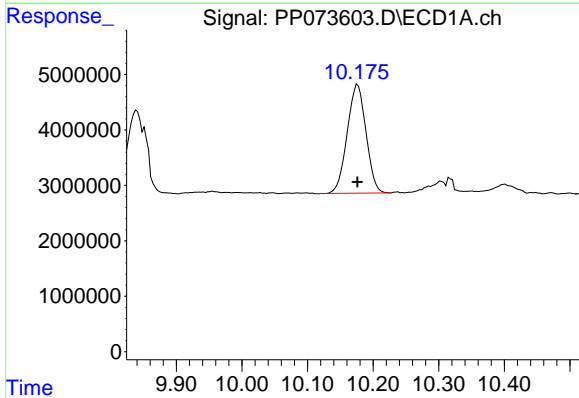


#1 Tetrachloro-m-xylene
 R.T.: 4.487 min
 Delta R.T.: 0.000 min
 Response: 24126602
 Conc: 17.62 ng/ml

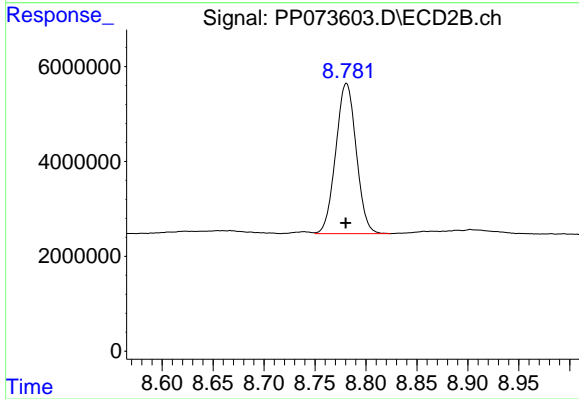
Instrument :
 ECD_P
 ClientSampleId :
 G1(0-6)



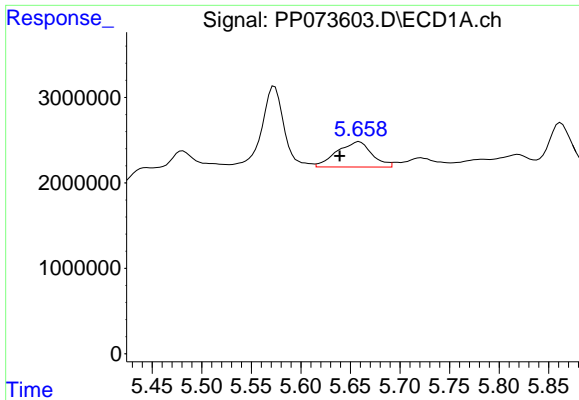
#1 Tetrachloro-m-xylene
 R.T.: 3.779 min
 Delta R.T.: 0.000 min
 Response: 39840241
 Conc: 21.63 ng/ml



#2 Decachlorobiphenyl
 R.T.: 10.176 min
 Delta R.T.: 0.000 min
 Response: 39020046
 Conc: 35.76 ng/ml



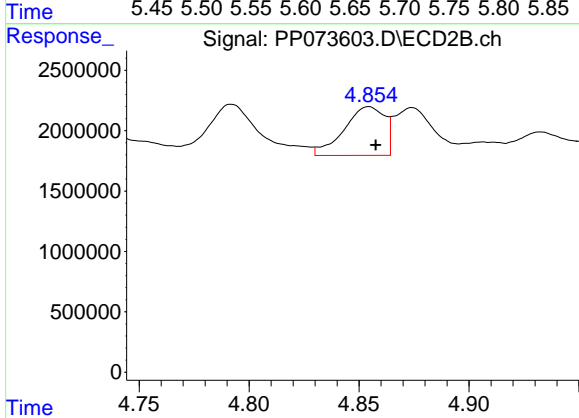
#2 Decachlorobiphenyl
 R.T.: 8.781 min
 Delta R.T.: 0.000 min
 Response: 44305285
 Conc: 33.48 ng/ml



#3 AR-1016-1

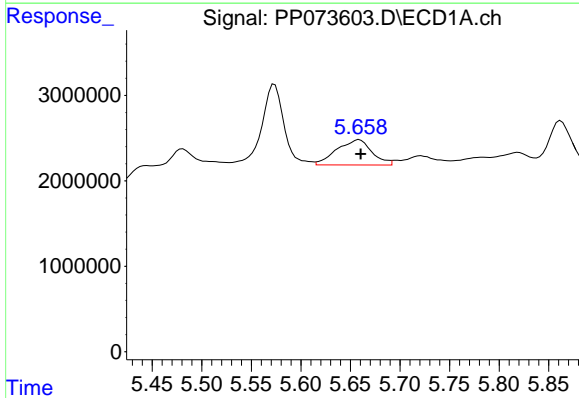
R.T.: 5.659 min
 Delta R.T.: 0.020 min
 Response: 7308098
 Conc: 153.81 ng/ml

Instrument :
 ECD_P
 ClientSampleId :
 G1(0-6)



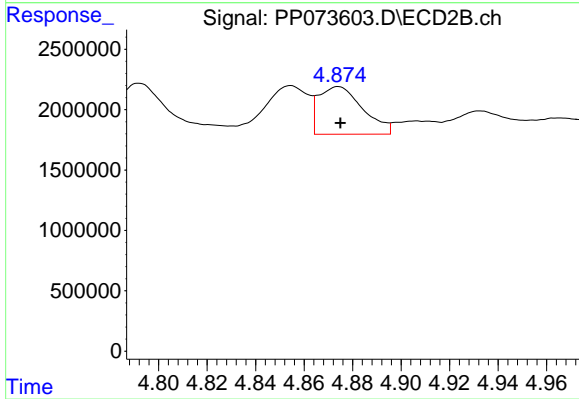
#3 AR-1016-1

R.T.: 4.854 min
 Delta R.T.: -0.003 min
 Response: 5187917
 Conc: 76.10 ng/ml



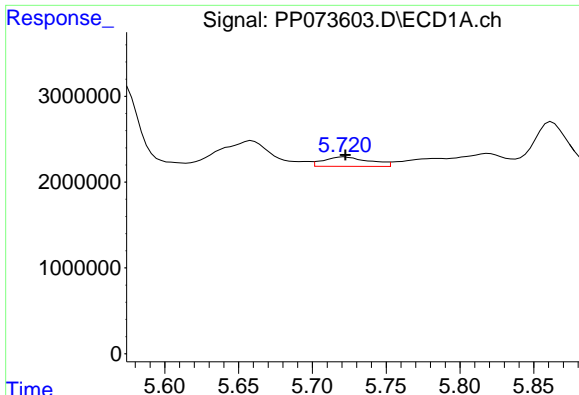
#4 AR-1016-2

R.T.: 5.659 min
 Delta R.T.: -0.002 min
 Response: 7308098
 Conc: 102.62 ng/ml



#4 AR-1016-2

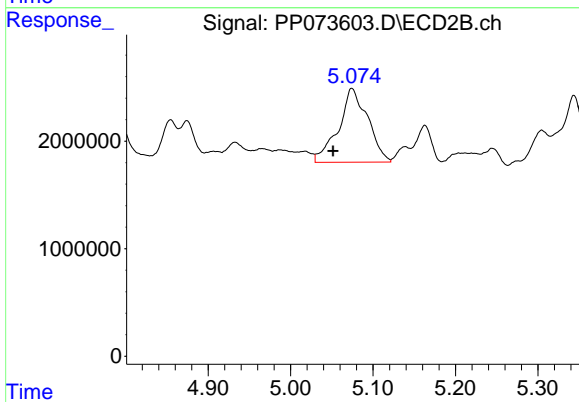
R.T.: 4.874 min
 Delta R.T.: 0.000 min
 Response: 4968334
 Conc: 48.76 ng/ml



#5 AR-1016-3

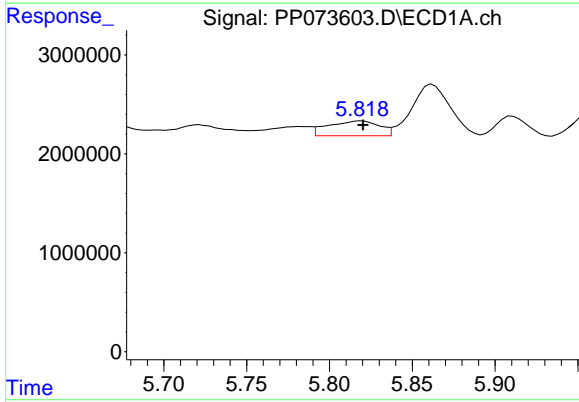
R.T.: 5.722 min
 Delta R.T.: 0.000 min
 Response: 2356229
 Conc: 53.96 ng/ml

Instrument :
 ECD_P
 ClientSampleId :
 G1(0-6)



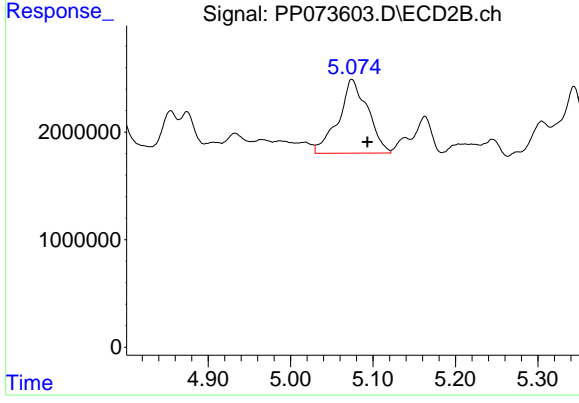
#5 AR-1016-3

R.T.: 5.074 min
 Delta R.T.: 0.023 min
 Response: 16966017
 Conc: 313.57 ng/ml



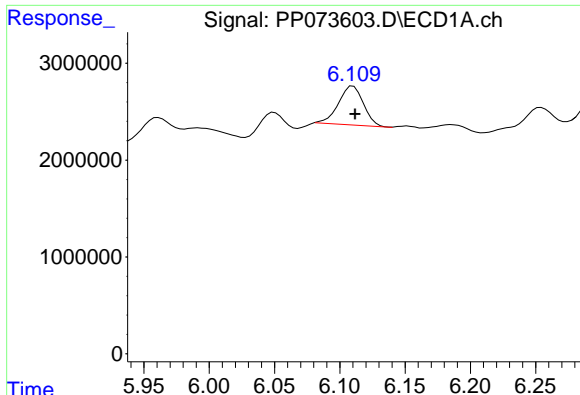
#6 AR-1016-4

R.T.: 5.819 min
 Delta R.T.: 0.000 min
 Response: 3242912
 Conc: 90.22 ng/ml



#6 AR-1016-4

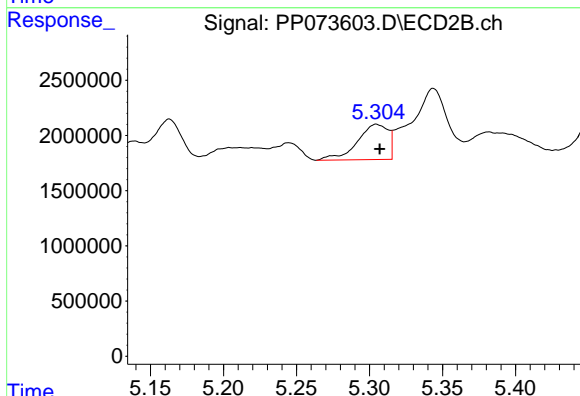
R.T.: 5.074 min
 Delta R.T.: -0.019 min
 Response: 16966017
 Conc: 386.64 ng/ml



#7 AR-1016-5

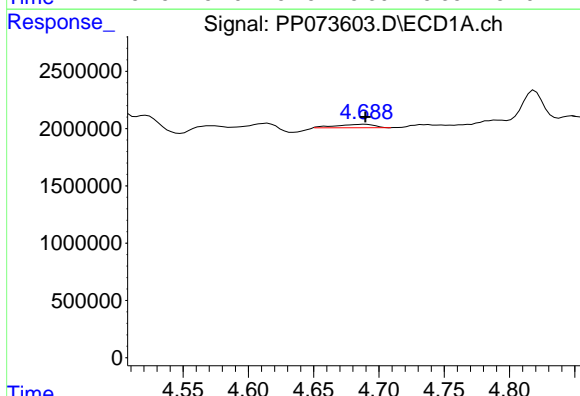
R.T.: 6.110 min
 Delta R.T.: -0.002 min
 Response: 5366488
 Conc: 171.29 ng/ml

Instrument :
 ECD_P
 ClientSampleId :
 G1(0-6)



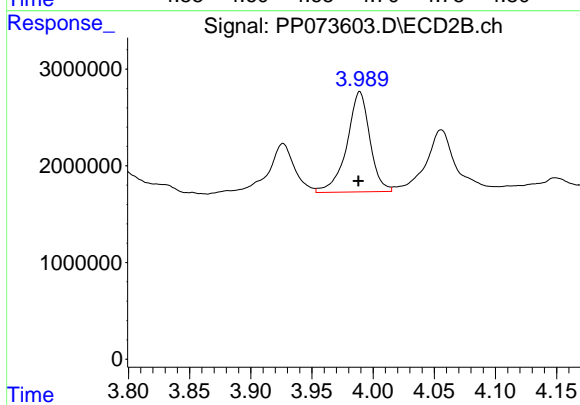
#7 AR-1016-5

R.T.: 5.305 min
 Delta R.T.: -0.002 min
 Response: 4713325
 Conc: 86.35 ng/ml



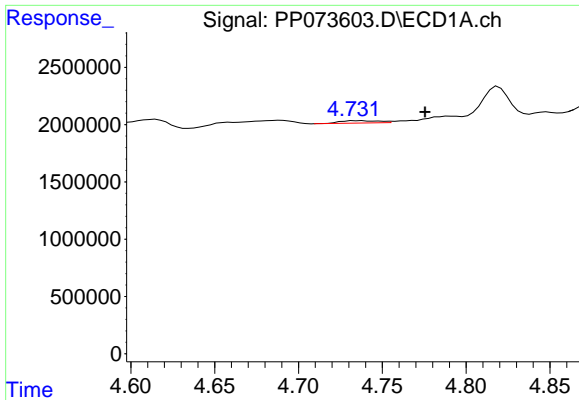
#8 AR-1221-1

R.T.: 4.690 min
 Delta R.T.: 0.000 min
 Response: 610198
 Conc: 34.15 ng/ml



#8 AR-1221-1

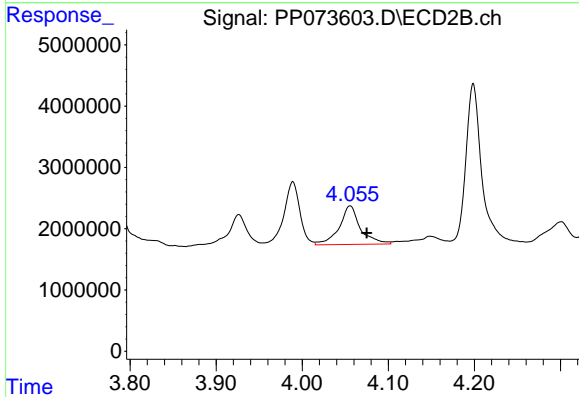
R.T.: 3.989 min
 Delta R.T.: 0.001 min
 Response: 13554029
 Conc: 501.17 ng/ml



#9 AR-1221-2

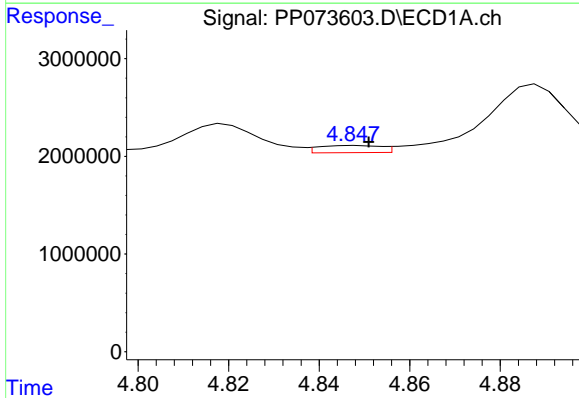
R.T.: 4.733 min
 Delta R.T.: -0.043 min
 Response: 341500
 Conc: 25.29 ng/ml

Instrument :
 ECD_P
 ClientSampleId :
 G1(0-6)



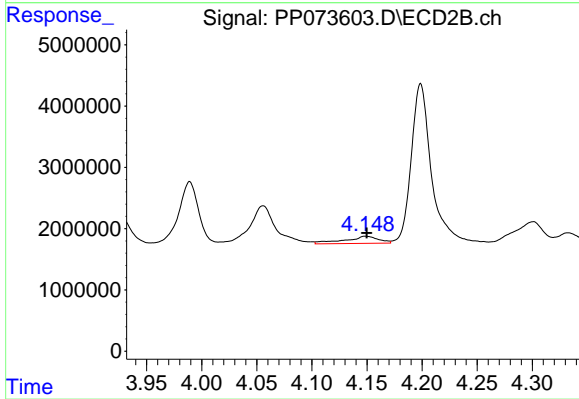
#9 AR-1221-2

R.T.: 4.056 min
 Delta R.T.: -0.019 min
 Response: 10766811
 Conc: 528.81 ng/ml



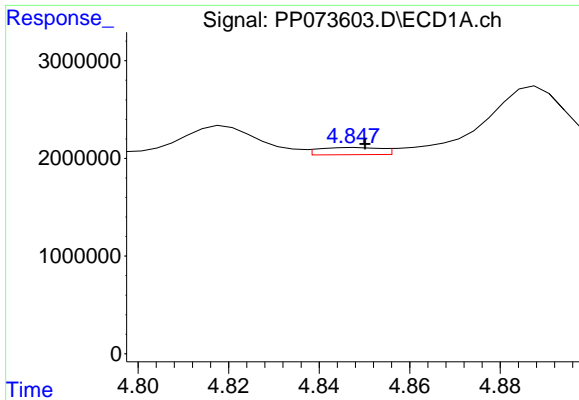
#10 AR-1221-3

R.T.: 4.848 min
 Delta R.T.: -0.003 min
 Response: 703090
 Conc: 16.90 ng/ml



#10 AR-1221-3

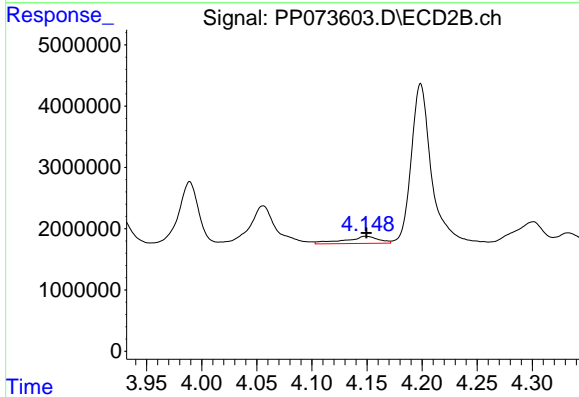
R.T.: 4.149 min
 Delta R.T.: -0.001 min
 Response: 2468924
 Conc: 40.18 ng/ml



#11 AR-1232-1

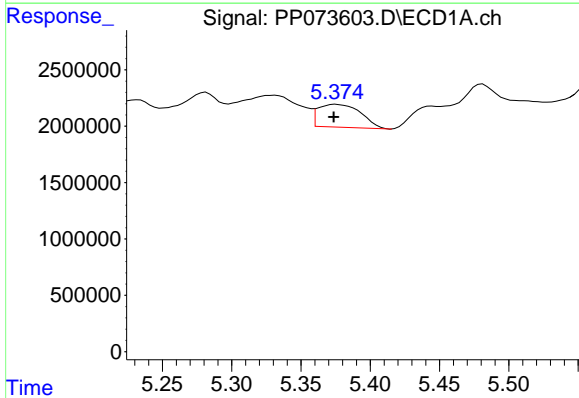
R.T.: 4.848 min
 Delta R.T.: -0.002 min
 Response: 703090
 Conc: 21.53 ng/ml

Instrument :
 ECD_P
 ClientSampleId :
 G1(0-6)



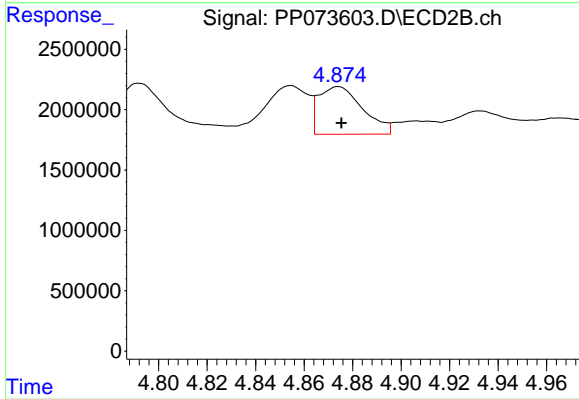
#11 AR-1232-1

R.T.: 4.149 min
 Delta R.T.: 0.000 min
 Response: 2468924
 Conc: 52.96 ng/ml



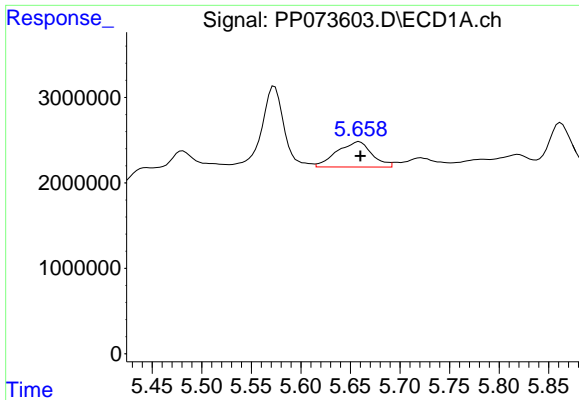
#12 AR-1232-2

R.T.: 5.375 min
 Delta R.T.: 0.001 min
 Response: 4359129
 Conc: 268.18 ng/ml



#12 AR-1232-2

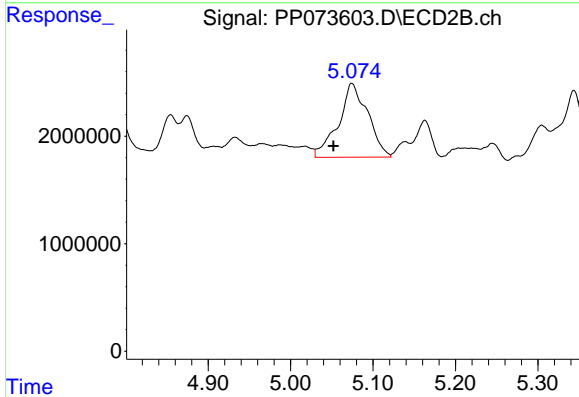
R.T.: 4.874 min
 Delta R.T.: -0.001 min
 Response: 4968334
 Conc: 104.25 ng/ml



#13 AR-1232-3

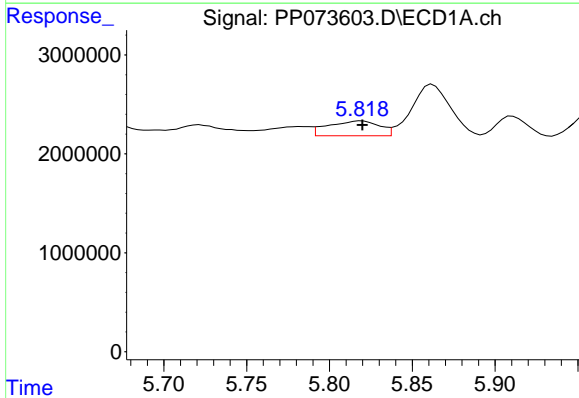
R.T.: 5.659 min
 Delta R.T.: -0.001 min
 Response: 7308098
 Conc: 221.50 ng/ml

Instrument :
 ECD_P
 ClientSampleId :
 G1(0-6)



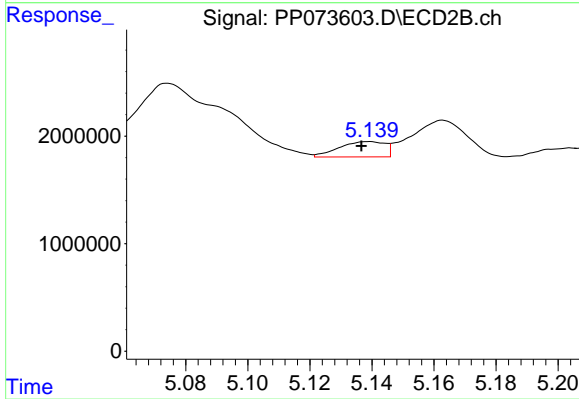
#13 AR-1232-3

R.T.: 5.074 min
 Delta R.T.: 0.022 min
 Response: 16966017
 Conc: 677.85 ng/ml



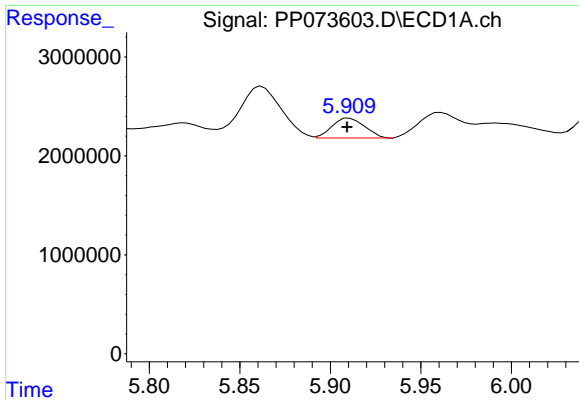
#14 AR-1232-4

R.T.: 5.819 min
 Delta R.T.: 0.000 min
 Response: 3242912
 Conc: 197.20 ng/ml



#14 AR-1232-4

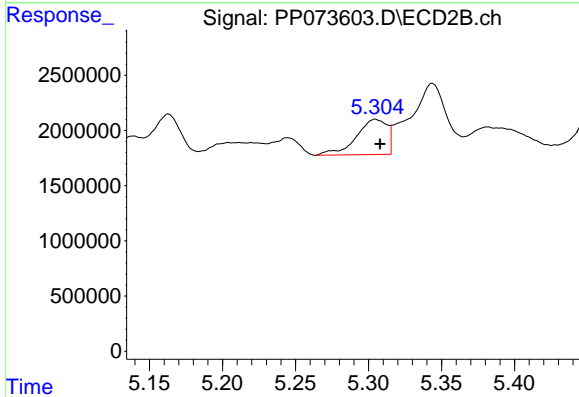
R.T.: 5.139 min
 Delta R.T.: 0.002 min
 Response: 1466785
 Conc: 67.73 ng/ml



#15 AR-1232-5

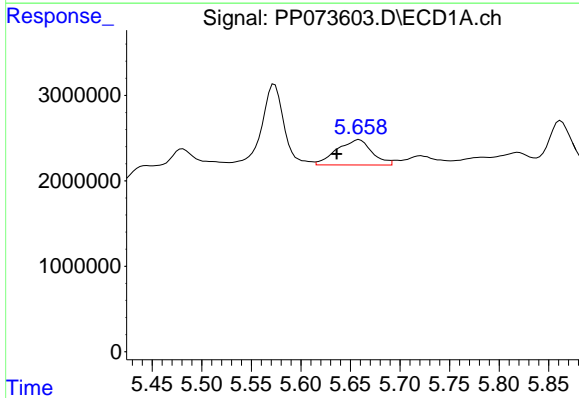
R.T.: 5.910 min
 Delta R.T.: 0.001 min
 Response: 2510023
 Conc: 237.46 ng/ml

Instrument :
 ECD_P
 ClientSampleId :
 G1(0-6)



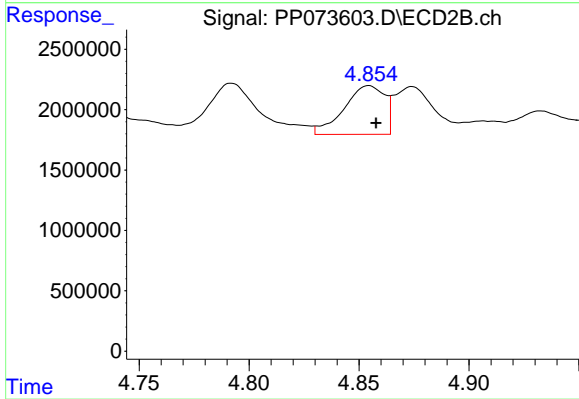
#15 AR-1232-5

R.T.: 5.305 min
 Delta R.T.: -0.003 min
 Response: 4713325
 Conc: 208.89 ng/ml



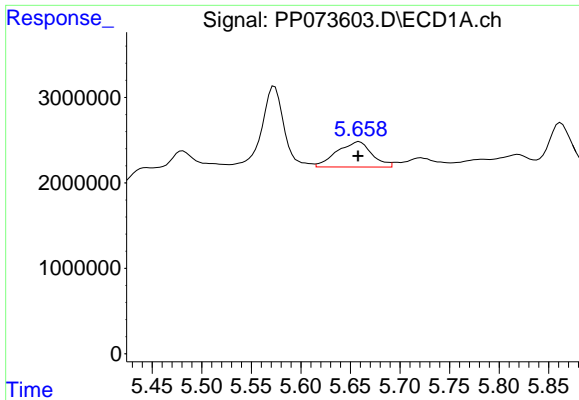
#16 AR-1242-1

R.T.: 5.659 min
 Delta R.T.: 0.023 min
 Response: 7308098
 Conc: 191.37 ng/ml



#16 AR-1242-1

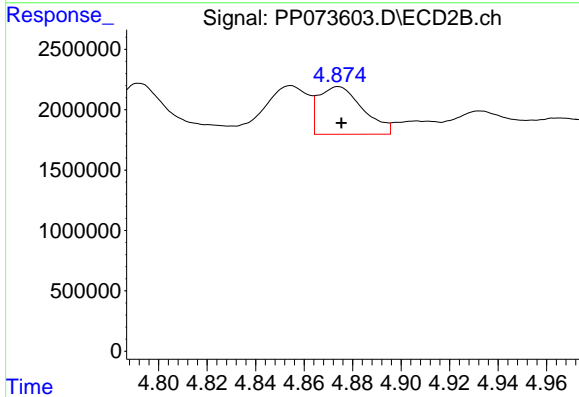
R.T.: 4.854 min
 Delta R.T.: -0.003 min
 Response: 5187917
 Conc: 89.81 ng/ml



#17 AR-1242-2

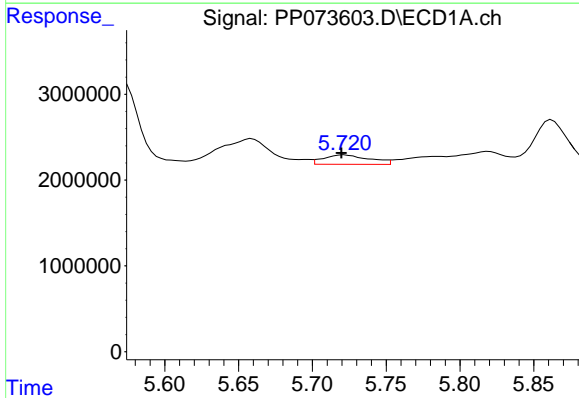
R.T.: 5.659 min
 Delta R.T.: 0.001 min
 Response: 7308098
 Conc: 122.04 ng/ml

Instrument :
 ECD_P
 ClientSampleId :
 G1(0-6)



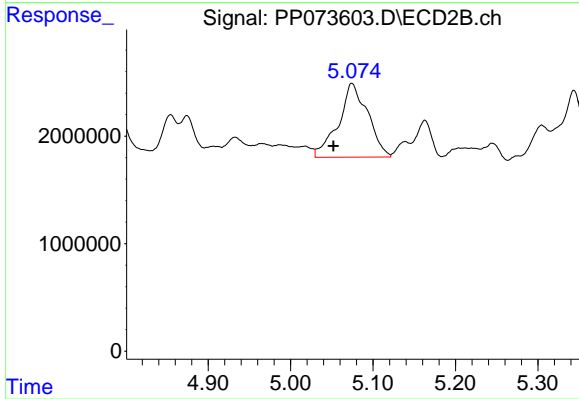
#17 AR-1242-2

R.T.: 4.874 min
 Delta R.T.: -0.001 min
 Response: 4968334
 Conc: 57.47 ng/ml



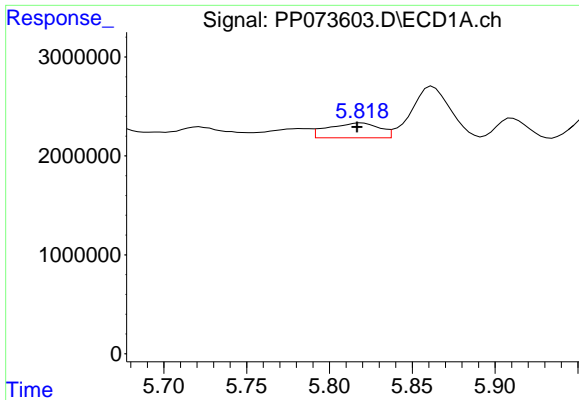
#18 AR-1242-3

R.T.: 5.722 min
 Delta R.T.: 0.002 min
 Response: 2356229
 Conc: 64.34 ng/ml



#18 AR-1242-3

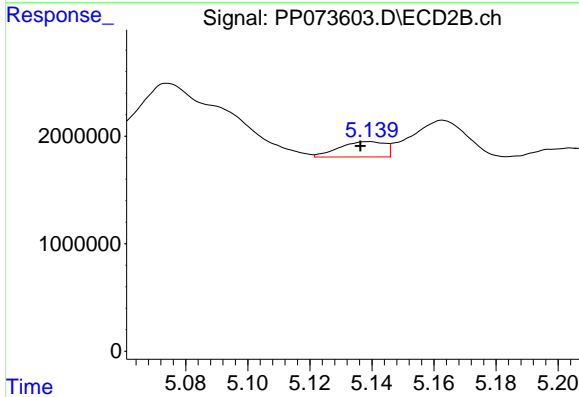
R.T.: 5.074 min
 Delta R.T.: 0.022 min
 Response: 16966017
 Conc: 369.25 ng/ml



#19 AR-1242-4

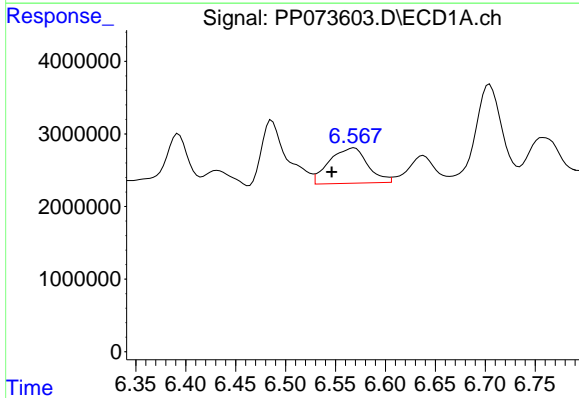
R.T.: 5.819 min
 Delta R.T.: 0.003 min
 Response: 3242912
 Conc: 100.91 ng/ml

Instrument :
 ECD_P
 ClientSampleId :
 G1(0-6)



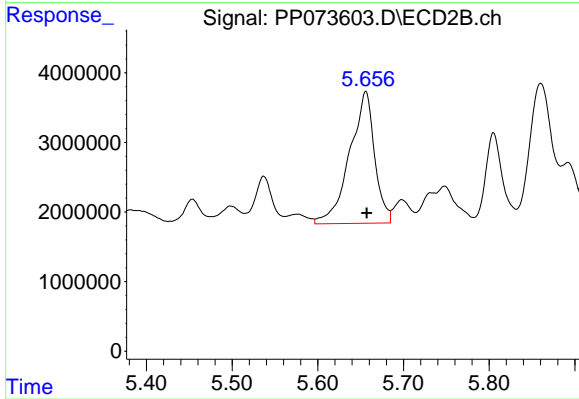
#19 AR-1242-4

R.T.: 5.139 min
 Delta R.T.: 0.003 min
 Response: 1466785
 Conc: 33.14 ng/ml



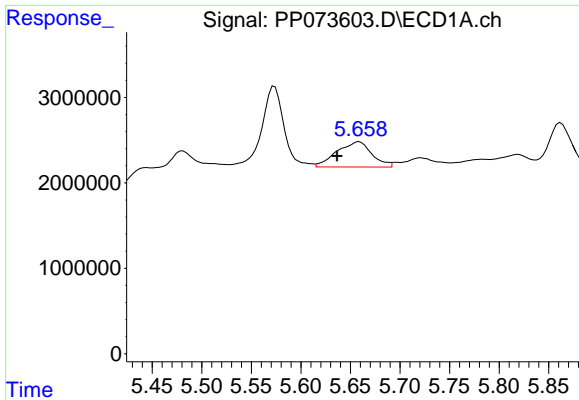
#20 AR-1242-5

R.T.: 6.569 min
 Delta R.T.: 0.023 min
 Response: 13049192
 Conc: 398.61 ng/ml



#20 AR-1242-5

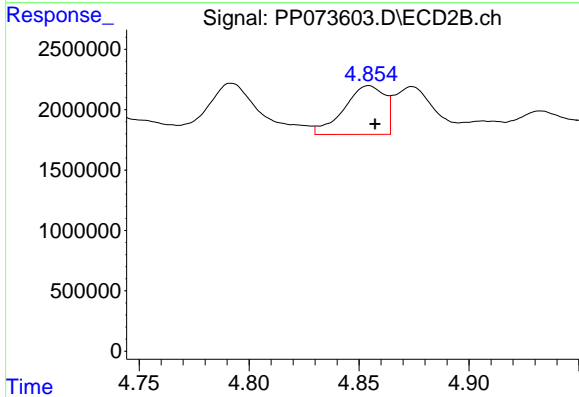
R.T.: 5.656 min
 Delta R.T.: -0.001 min
 Response: 38328010
 Conc: 693.81 ng/ml



#21 AR-1248-1

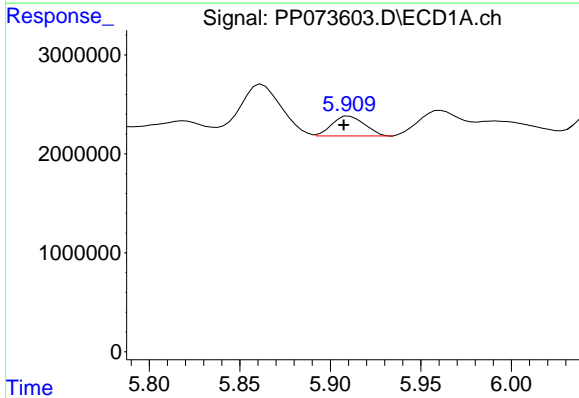
R.T.: 5.659 min
 Delta R.T.: 0.022 min
 Response: 7308098
 Conc: 236.73 ng/ml

Instrument :
 ECD_P
 ClientSampleId :
 G1(0-6)



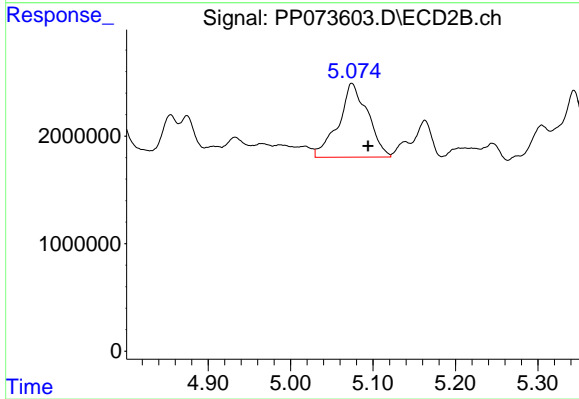
#21 AR-1248-1

R.T.: 4.854 min
 Delta R.T.: -0.003 min
 Response: 5187917
 Conc: 115.56 ng/ml



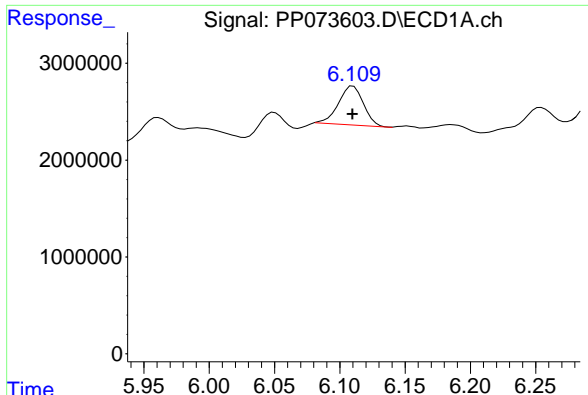
#22 AR-1248-2

R.T.: 5.910 min
 Delta R.T.: 0.003 min
 Response: 2510023
 Conc: 62.87 ng/ml



#22 AR-1248-2

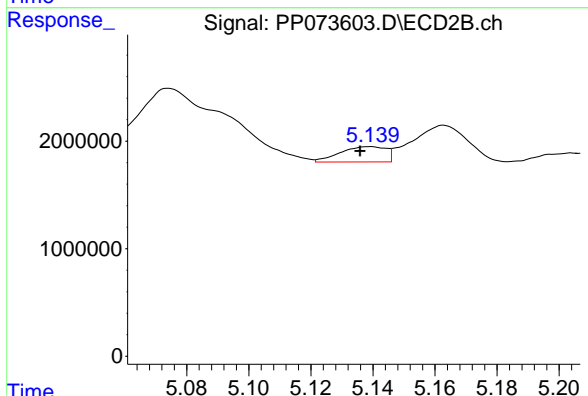
R.T.: 5.074 min
 Delta R.T.: -0.020 min
 Response: 16966017
 Conc: 275.71 ng/ml



#23 AR-1248-3

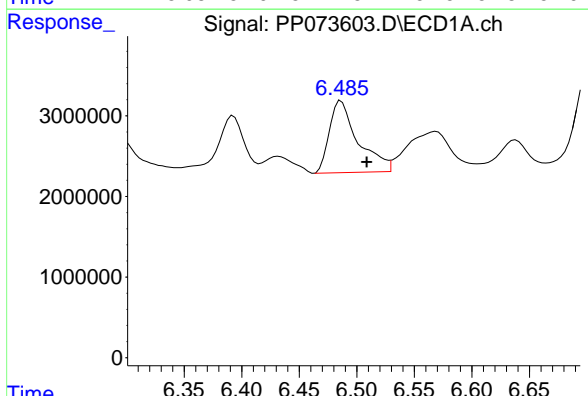
R.T.: 6.110 min
 Delta R.T.: 0.000 min
 Response: 5366488
 Conc: 120.84 ng/ml

Instrument :
 ECD_P
 ClientSampleId :
 G1(0-6)



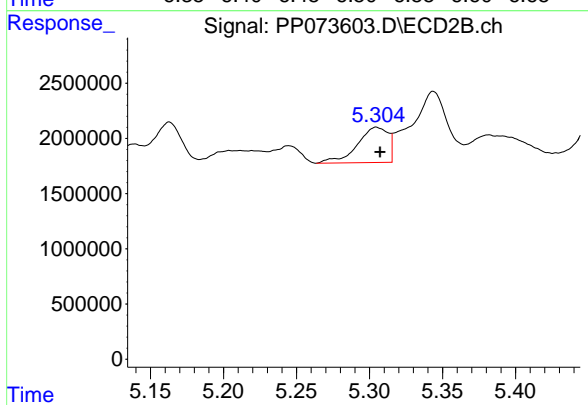
#23 AR-1248-3

R.T.: 5.139 min
 Delta R.T.: 0.003 min
 Response: 1466785
 Conc: 22.90 ng/ml



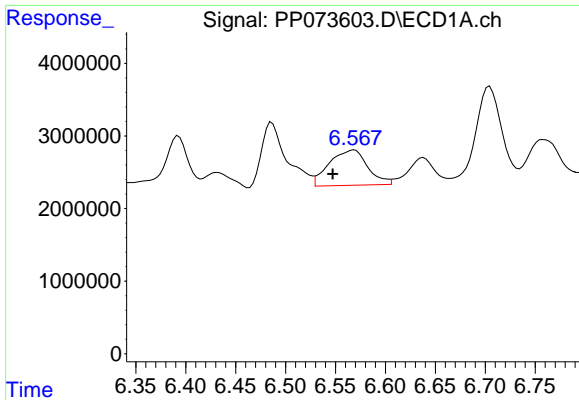
#24 AR-1248-4

R.T.: 6.486 min
 Delta R.T.: -0.022 min
 Response: 15458273
 Conc: 280.65 ng/ml



#24 AR-1248-4

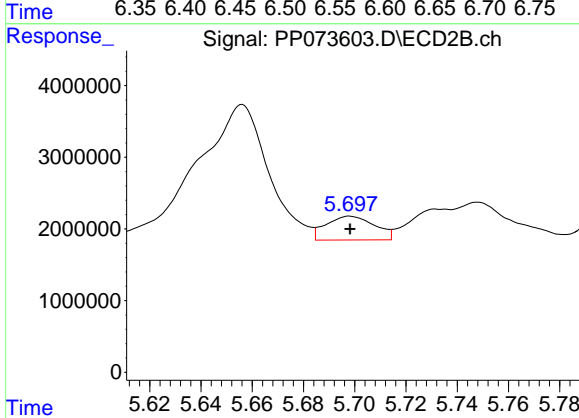
R.T.: 5.305 min
 Delta R.T.: -0.003 min
 Response: 4713325
 Conc: 62.53 ng/ml



#25 AR-1248-5

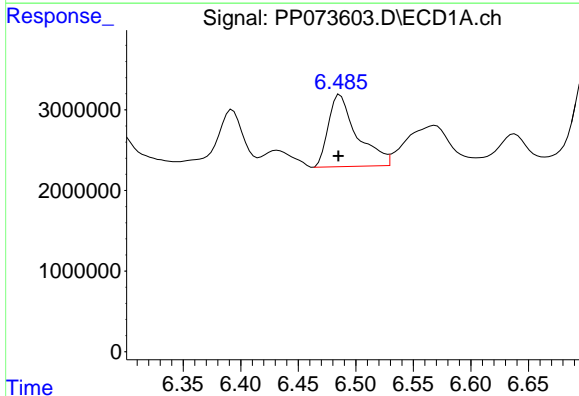
R.T.: 6.569 min
 Delta R.T.: 0.022 min
 Response: 13049192
 Conc: 242.59 ng/ml

Instrument :
 ECD_P
 ClientSampleId :
 G1(0-6)



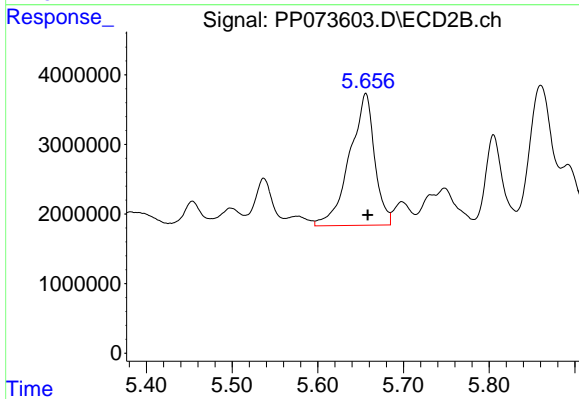
#25 AR-1248-5

R.T.: 5.698 min
 Delta R.T.: 0.000 min
 Response: 4359645
 Conc: 58.45 ng/ml



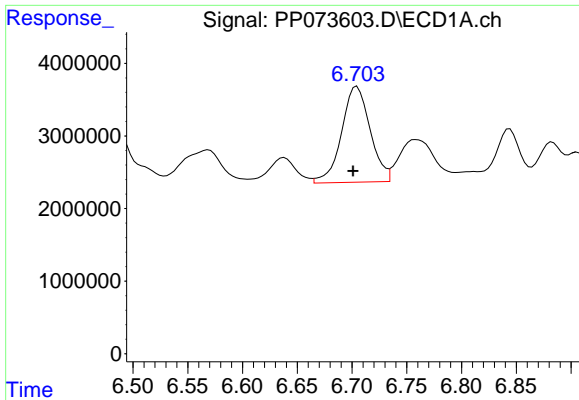
#26 AR-1254-1

R.T.: 6.486 min
 Delta R.T.: 0.001 min
 Response: 15458273
 Conc: 288.46 ng/ml



#26 AR-1254-1

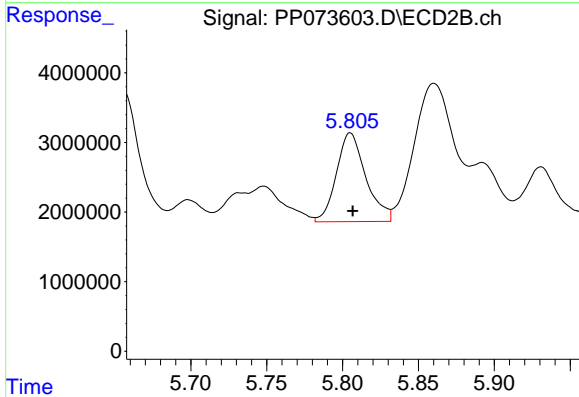
R.T.: 5.656 min
 Delta R.T.: -0.002 min
 Response: 38328010
 Conc: 330.33 ng/ml



#27 AR-1254-2

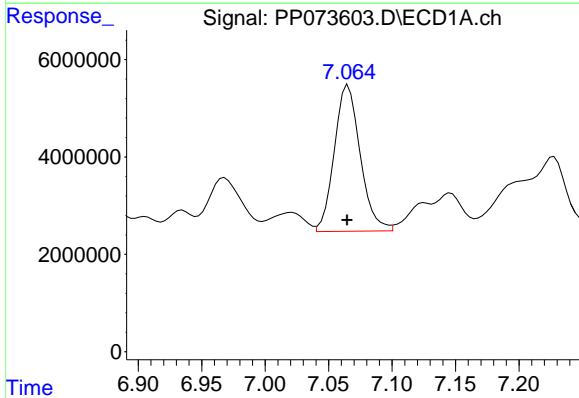
R.T.: 6.704 min
 Delta R.T.: 0.003 min
 Response: 24005963
 Conc: 288.23 ng/ml

Instrument :
 ECD_P
 ClientSampleId :
 G1(0-6)



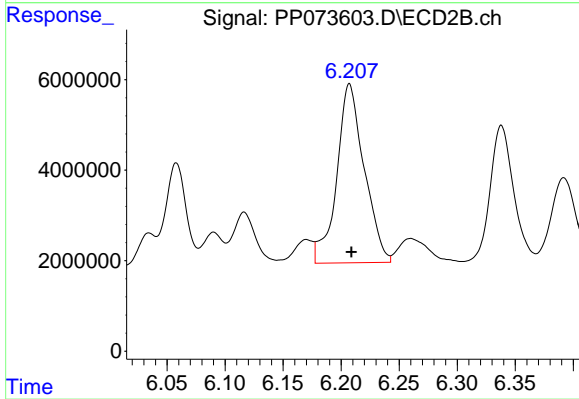
#27 AR-1254-2

R.T.: 5.805 min
 Delta R.T.: -0.002 min
 Response: 17233014
 Conc: 171.26 ng/ml



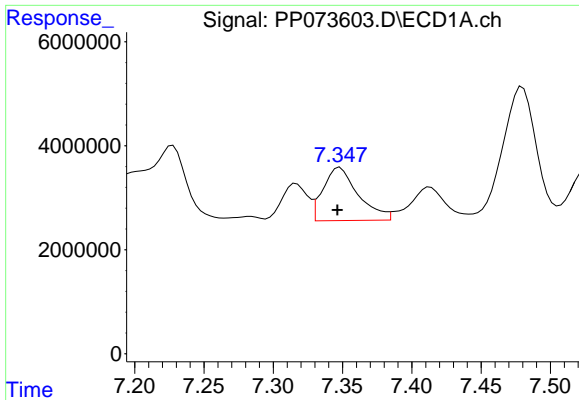
#28 AR-1254-3

R.T.: 7.066 min
 Delta R.T.: 0.001 min
 Response: 42622216
 Conc: 482.52 ng/ml



#28 AR-1254-3

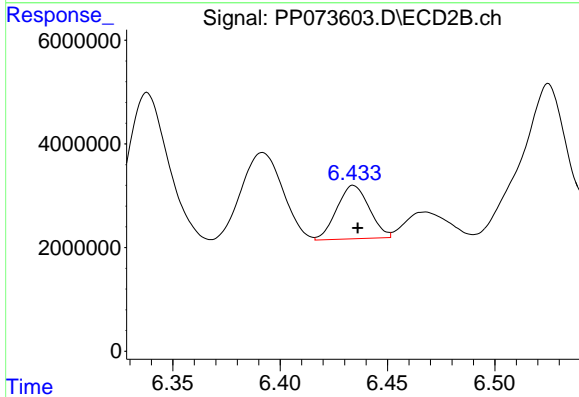
R.T.: 6.207 min
 Delta R.T.: -0.002 min
 Response: 65058072
 Conc: 421.23 ng/ml



#29 AR-1254-4

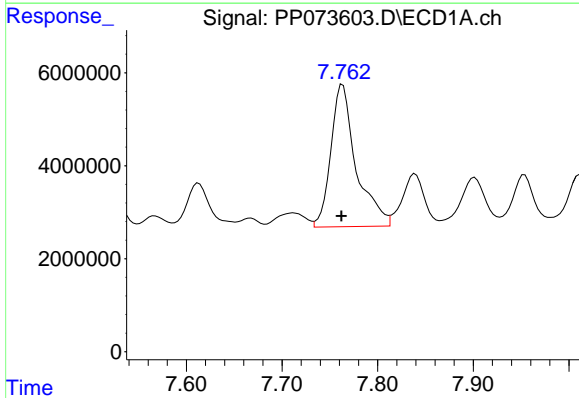
R.T.: 7.348 min
 Delta R.T.: 0.002 min
 Response: 18007369
 Conc: 228.91 ng/ml

Instrument :
 ECD_P
 ClientSampleId :
 G1(0-6)



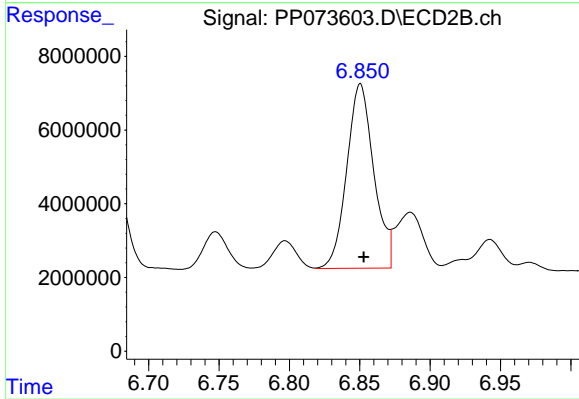
#29 AR-1254-4

R.T.: 6.434 min
 Delta R.T.: -0.002 min
 Response: 10843684
 Conc: 114.68 ng/ml



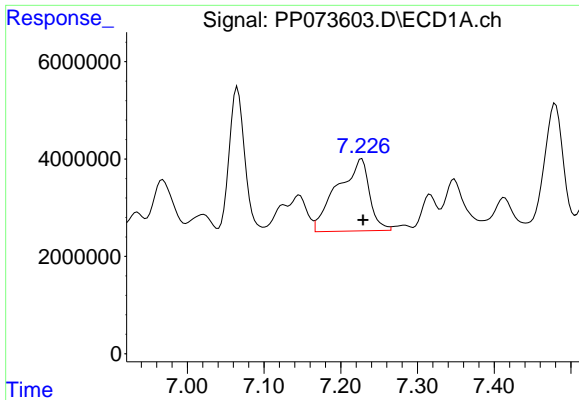
#30 AR-1254-5

R.T.: 7.763 min
 Delta R.T.: 0.001 min
 Response: 56024143
 Conc: 760.37 ng/ml



#30 AR-1254-5

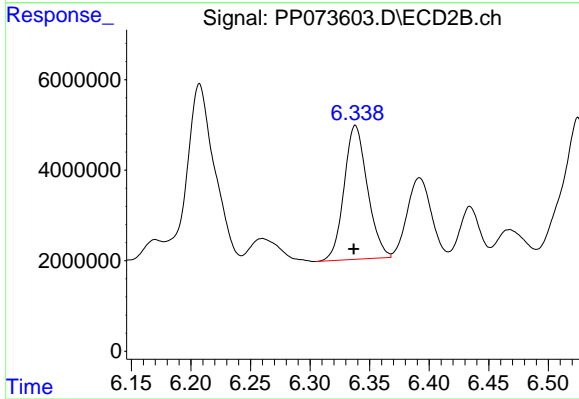
R.T.: 6.850 min
 Delta R.T.: -0.002 min
 Response: 67018260
 Conc: 502.22 ng/ml



#31 AR-1260-1

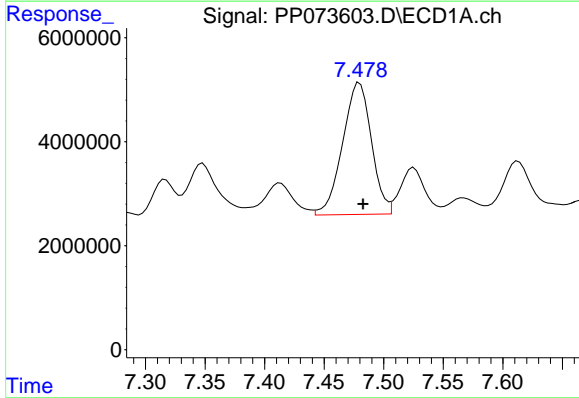
R.T.: 7.227 min
 Delta R.T.: -0.002 min
 Response: 43318666
 Conc: 734.70 ng/ml

Instrument :
 ECD_P
 ClientSampleId :
 G1(0-6)



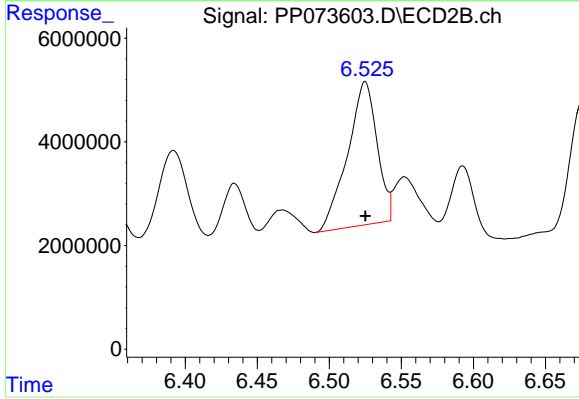
#31 AR-1260-1

R.T.: 6.338 min
 Delta R.T.: 0.001 min
 Response: 40306360
 Conc: 413.14 ng/ml



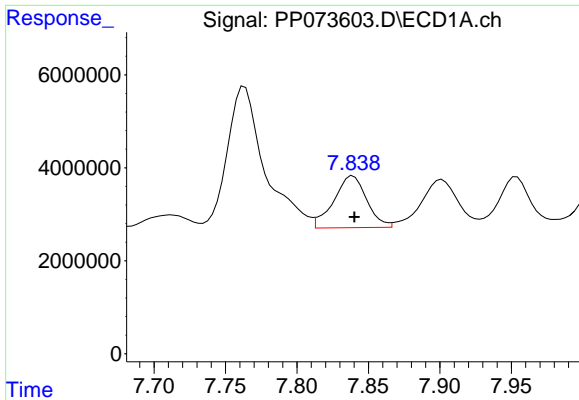
#32 AR-1260-2

R.T.: 7.480 min
 Delta R.T.: -0.003 min
 Response: 42768806
 Conc: 446.25 ng/ml



#32 AR-1260-2

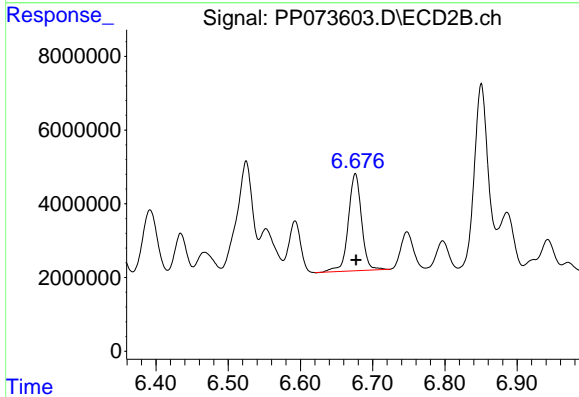
R.T.: 6.525 min
 Delta R.T.: 0.000 min
 Response: 39296427
 Conc: 319.91 ng/ml



#33 AR-1260-3

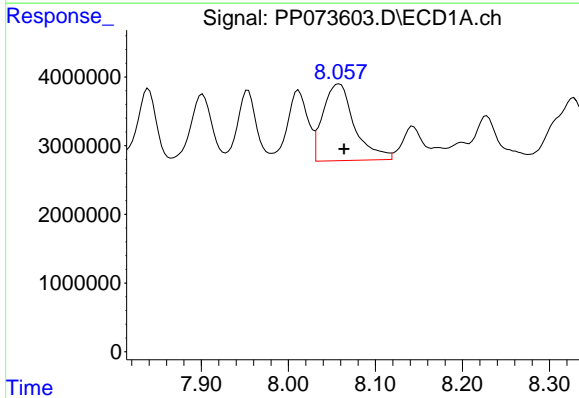
R.T.: 7.839 min
 Delta R.T.: -0.001 min
 Response: 17872294
 Conc: 244.59 ng/ml

Instrument :
 ECD_P
 ClientSampleId :
 G1(0-6)



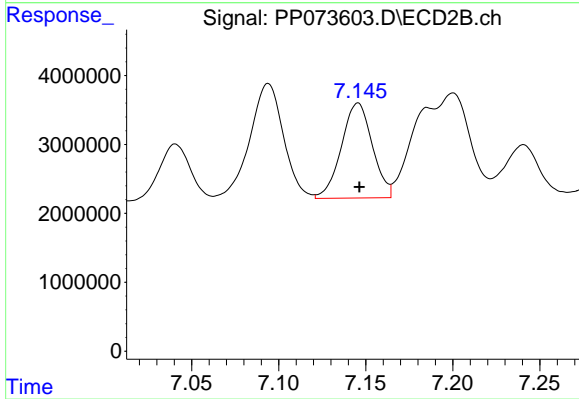
#33 AR-1260-3

R.T.: 6.676 min
 Delta R.T.: 0.000 min
 Response: 33484994
 Conc: 305.90 ng/ml



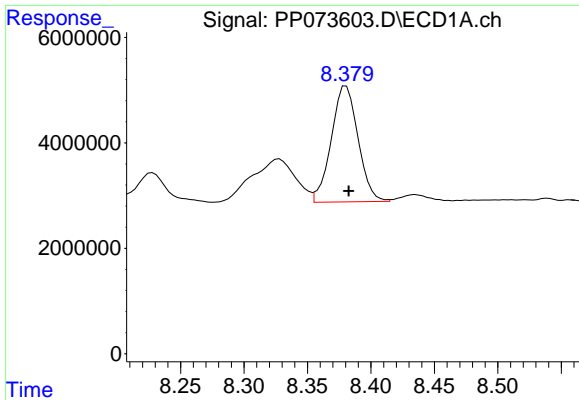
#34 AR-1260-4

R.T.: 8.058 min
 Delta R.T.: -0.006 min
 Response: 28146324
 Conc: 431.03 ng/ml



#34 AR-1260-4

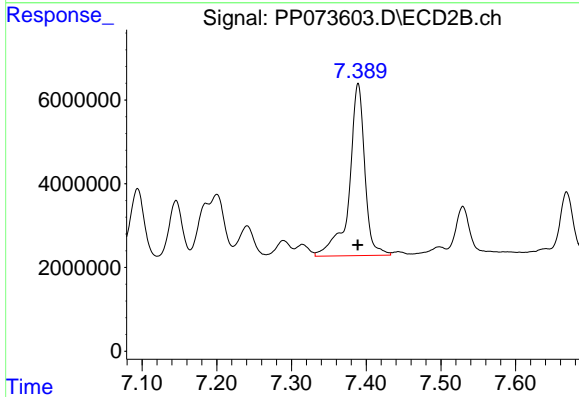
R.T.: 7.146 min
 Delta R.T.: 0.000 min
 Response: 17081017
 Conc: 191.04 ng/ml



#35 AR-1260-5

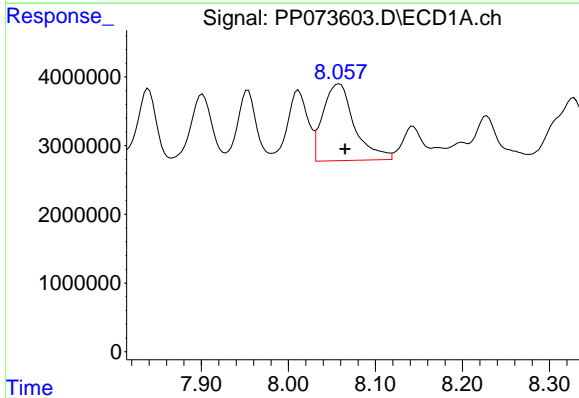
R.T.: 8.381 min
 Delta R.T.: -0.002 min
 Response: 32360163
 Conc: 214.51 ng/ml

Instrument :
 ECD_P
 ClientSampleId :
 G1(0-6)



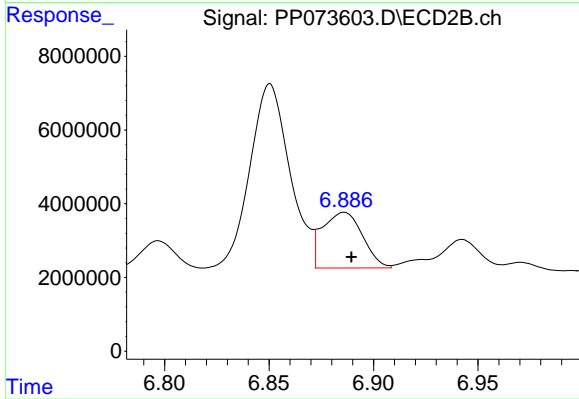
#35 AR-1260-5

R.T.: 7.389 min
 Delta R.T.: 0.000 min
 Response: 59272788
 Conc: 263.74 ng/ml



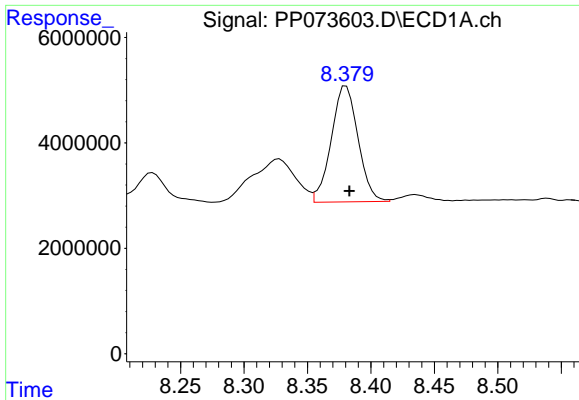
#36 AR-1262-1

R.T.: 8.058 min
 Delta R.T.: -0.007 min
 Response: 28146324
 Conc: 323.42 ng/ml



#36 AR-1262-1

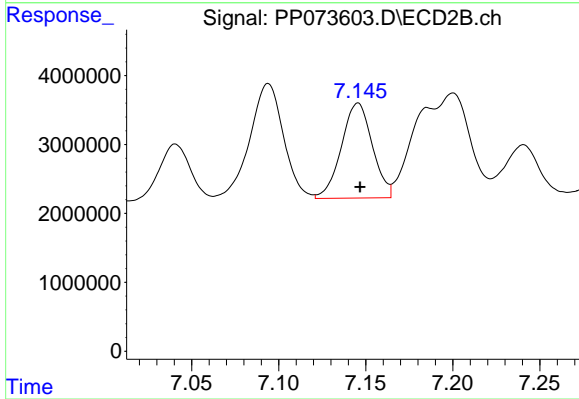
R.T.: 6.886 min
 Delta R.T.: -0.003 min
 Response: 20168273
 Conc: 136.56 ng/ml



#37 AR-1262-2

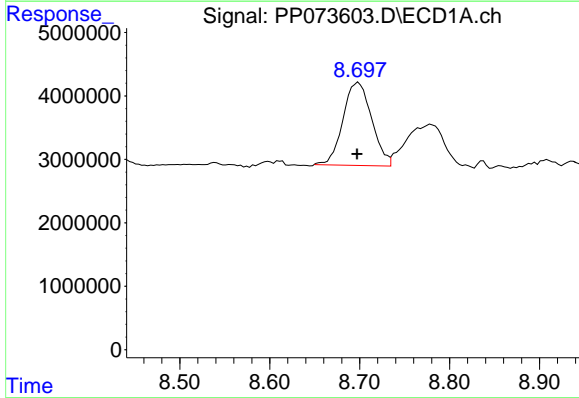
R.T.: 8.381 min
 Delta R.T.: -0.003 min
 Response: 32360163
 Conc: 163.41 ng/ml

Instrument :
 ECD_P
 ClientSampleId :
 G1(0-6)



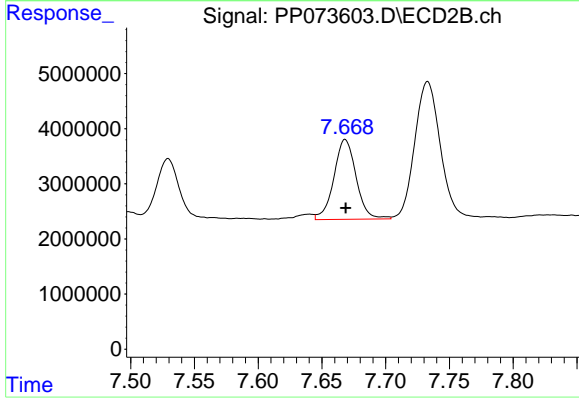
#37 AR-1262-2

R.T.: 7.146 min
 Delta R.T.: -0.001 min
 Response: 17081017
 Conc: 133.62 ng/ml



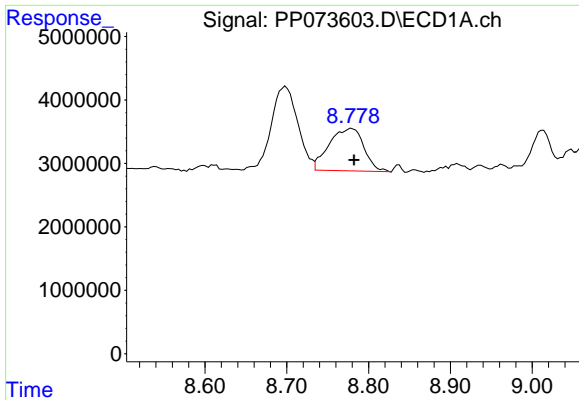
#38 AR-1262-3

R.T.: 8.699 min
 Delta R.T.: 0.001 min
 Response: 28994514
 Conc: 230.62 ng/ml



#38 AR-1262-3

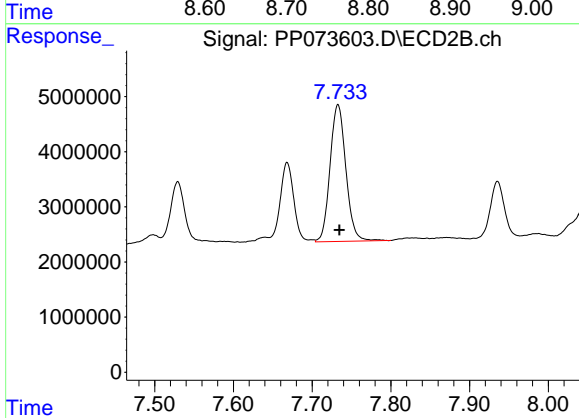
R.T.: 7.668 min
 Delta R.T.: 0.000 min
 Response: 17606671
 Conc: 154.42 ng/ml



#39 AR-1262-4

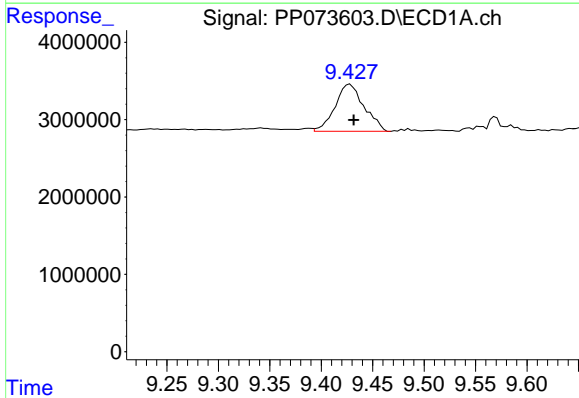
R.T.: 8.779 min
 Delta R.T.: -0.003 min
 Response: 19762065
 Conc: 211.90 ng/ml

Instrument :
 ECD_P
 ClientSampleId :
 G1(0-6)



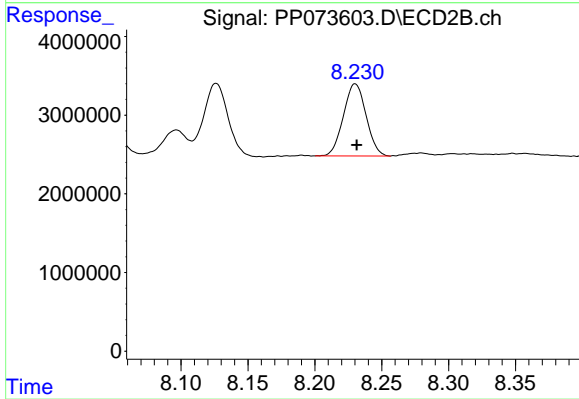
#39 AR-1262-4

R.T.: 7.733 min
 Delta R.T.: -0.002 min
 Response: 34713687
 Conc: 188.61 ng/ml



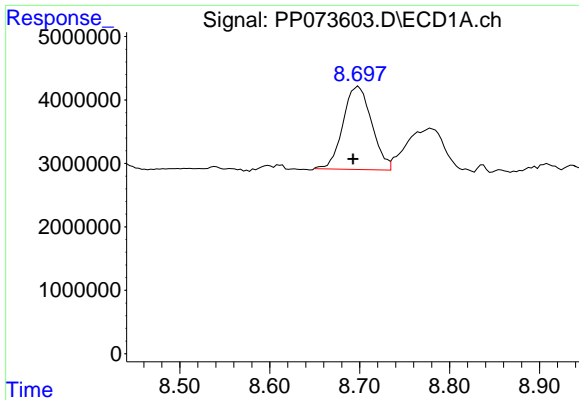
#40 AR-1262-5

R.T.: 9.428 min
 Delta R.T.: -0.004 min
 Response: 11931580
 Conc: 188.23 ng/ml



#40 AR-1262-5

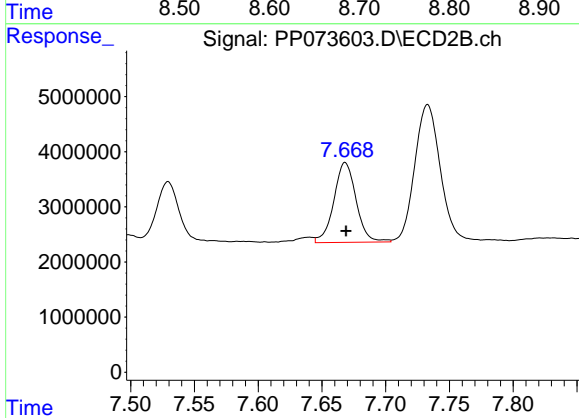
R.T.: 8.230 min
 Delta R.T.: -0.001 min
 Response: 10820832
 Conc: 128.15 ng/ml



#41 AR-1268-1

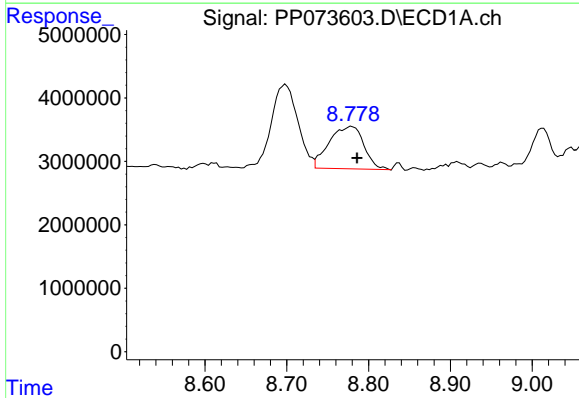
R.T.: 8.699 min
 Delta R.T.: 0.006 min
 Response: 28994514
 Conc: 129.89 ng/ml

Instrument :
 ECD_P
 ClientSampleId :
 G1(0-6)



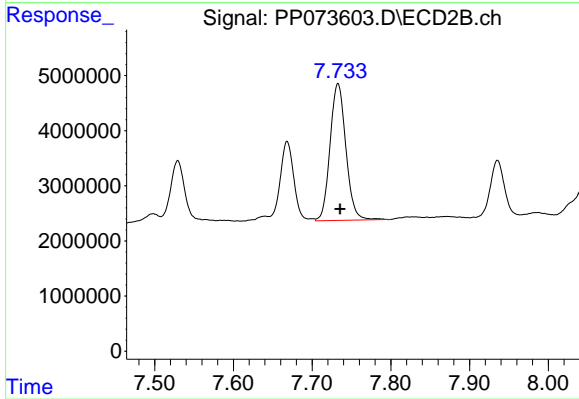
#41 AR-1268-1

R.T.: 7.668 min
 Delta R.T.: 0.000 min
 Response: 17606671
 Conc: 57.28 ng/ml



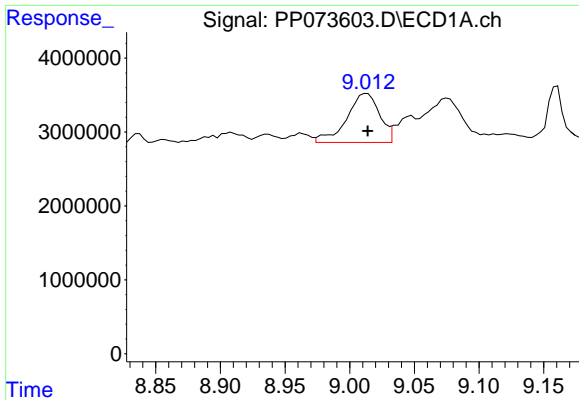
#42 AR-1268-2

R.T.: 8.779 min
 Delta R.T.: -0.007 min
 Response: 19762065
 Conc: 103.74 ng/ml



#42 AR-1268-2

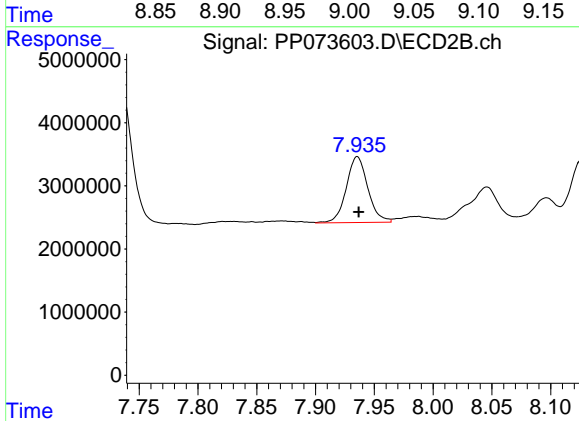
R.T.: 7.733 min
 Delta R.T.: -0.002 min
 Response: 34713687
 Conc: 130.66 ng/ml



#43 AR-1268-3

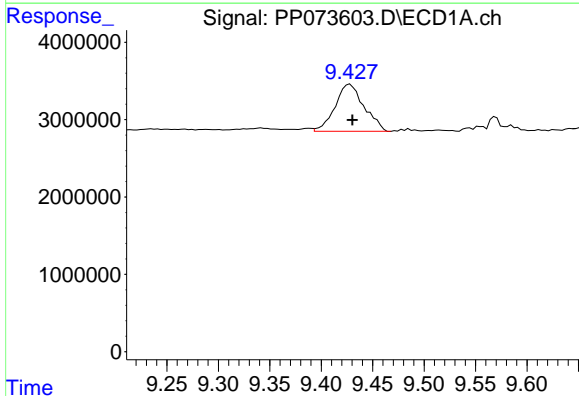
R.T.: 9.013 min
 Delta R.T.: 0.000 min
 Response: 11672637
 Conc: 70.50 ng/ml

Instrument :
 ECD_P
 ClientSampleId :
 G1(0-6)



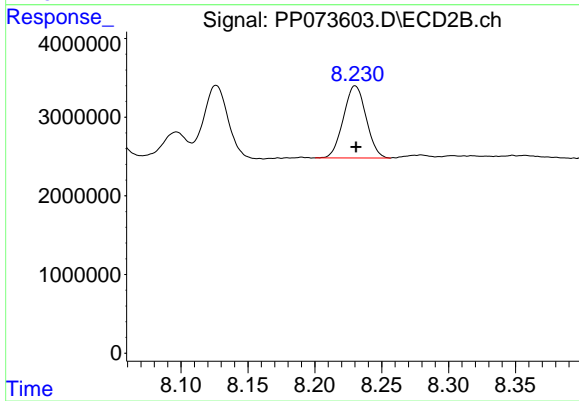
#43 AR-1268-3

R.T.: 7.936 min
 Delta R.T.: -0.001 min
 Response: 13319422
 Conc: 59.05 ng/ml



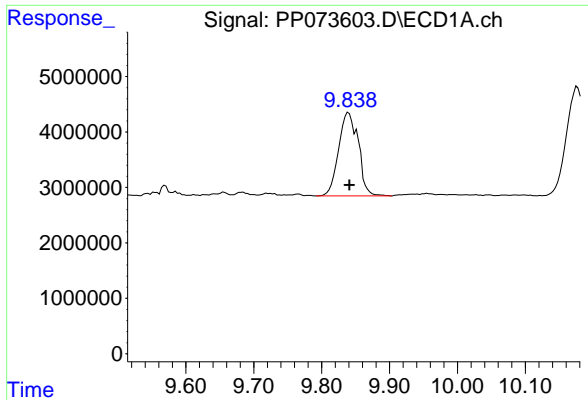
#44 AR-1268-4

R.T.: 9.428 min
 Delta R.T.: -0.002 min
 Response: 11931580
 Conc: 171.57 ng/ml



#44 AR-1268-4

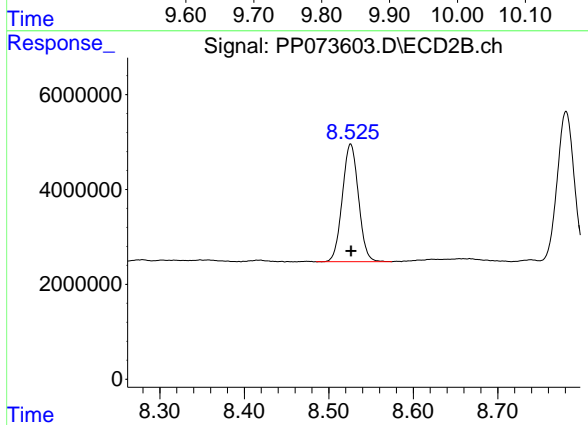
R.T.: 8.230 min
 Delta R.T.: 0.000 min
 Response: 10820832
 Conc: 116.39 ng/ml



#45 AR-1268-5

R.T.: 9.840 min
Delta R.T.: -0.001 min
Response: 30346673
Conc: 65.83 ng/ml

Instrument :
ECD_P
ClientSampleId :
G1(0-6)



#45 AR-1268-5

R.T.: 8.526 min
Delta R.T.: 0.000 min
Response: 32911118
Conc: 53.38 ng/ml