

Data Path : Z:\pestpcbsrv\HPCHEM1\ECD_P\Data\PP070925\
 Data File : PP073604.D
 Signal(s) : Signal #1: ECD1A.ch Signal #2: ECD2B.ch
 Acq On : 08 Jul 2025 13:17
 Operator : YP\AJ
 Sample : Q2509-02 10X
 Misc :
 ALS Vial : 16 Sample Multiplier: 1

Instrument :
 ECD_P
 ClientSampleId :
 AUD-25-0112

Integration File signal 1: autoint1.e
 Integration File signal 2: autoint2.e
 Quant Time: Jul 09 01:39:26 2025
 Quant Method : Z:\pestpcbsrv\HPCHEM1\ECD_P\methods\PP070825.M
 Quant Title : GC EXTRACTABLES
 QLast Update : Tue Jul 08 08:35:32 2025
 Response via : Initial Calibration
 Integrator: ChemStation

Volume Inj. : 2 µl
 Signal #1 Phase : ZB-MR1 Signal #2 Phase: ZB-MR2
 Signal #1 Info : 30Mx0.32mmx 0.50µ Signal #2 Info : 30M x 0.32mm x 0.25µm

Compound	RT#1	RT#2	Resp#1	Resp#2	ng/ml	ng/ml
System Monitoring Compounds						
1) SA Tetrachlo...	4.468	3.776	3304558	4255871	2.413	2.310
2) SA Decachlor...	10.176	8.783	134547	1082476	0.123	0.818 #
Target Compounds						
3) L1 AR-1016-1	5.618	4.854	1277569	4388110	26.889	64.366 #
4) L1 AR-1016-2	5.678	4.854	4043120	4388110	56.774	43.070
5) L1 AR-1016-3	5.713	5.068	738809	1677444	16.921	31.003 #
6) L1 AR-1016-4	5.830	5.096	2552547	1835955	71.011	41.840 #
7) L1 AR-1016-5	6.107	5.325	975619	2203959	31.140	40.378 #
8) L2 AR-1221-1	4.689	3.976	5351996	2551841	299.556	94.356 #
9) L2 AR-1221-2	4.762	4.074	8907506	430279	659.597	21.133 #
10) L2 AR-1221-3	4.853	4.162	6418099	5632462	154.263	91.661 #
11) L3 AR-1232-1	4.853	4.138	6418099	15069258	196.568	323.275 #
12) L3 AR-1232-2	5.406	4.854	1388255	4388110	85.406	92.071
13) L3 AR-1232-3	5.678	5.068	4043120	1677444	122.543	67.020 #
14) L3 AR-1232-4	5.830	5.139	2552547	2334714	155.216	107.808 #
15) L3 AR-1232-5	5.915	5.325	489498	2203959	46.309	97.678 #
16) L4 AR-1242-1	5.618	4.854	1277569	4388110	33.455	75.965 #
17) L4 AR-1242-2	5.678	4.854	4043120	4388110	67.518	50.756
18) L4 AR-1242-3	5.713	5.068	738809	1677444	20.175	36.509 #
19) L4 AR-1242-4	5.830	5.139	2552547	2334714	79.429	52.746 #
20) L4 AR-1242-5	6.573	5.655	3930248	597807	120.056	10.822 #
21) L5 AR-1248-1	5.618	4.854	1277569	4388110	41.385	97.742 #
22) L5 AR-1248-2	5.915	5.096	489498	1835955	12.261	29.835 #
23) L5 AR-1248-3	6.107	5.139	975619	2334714	21.969	36.443 #
24) L5 AR-1248-4	6.514	5.325	2045180	2203959	37.131	29.239
25) L5 AR-1248-5	6.573	5.715	3930248	4985403	73.066	66.837
26) L6 AR-1254-1	6.485	5.655	1096772	597807	20.466	5.152 #
27) L6 AR-1254-2	6.708	5.822	3600923	4813154	43.234	47.833
28) L6 AR-1254-3	7.061	6.212	1362311	3386960	15.423	21.930 #
29) L6 AR-1254-4	7.334	6.403	2947486	2631387	37.468	27.828 #
30) L6 AR-1254-5	7.764	6.844	1805675	103432	24.507	0.775 #
31) L7 AR-1260-1	7.228	6.322	1833892	1636120	31.103	16.770 #
32) L7 AR-1260-2	7.499	6.514	6091259	5779941	63.557	47.054 #
33) L7 AR-1260-3	7.833	6.678	1468416	166754	20.096	1.523 #
34) L7 AR-1260-4	8.067	7.123	740686	1478313	11.343	16.534 #
35) L7 AR-1260-5	8.373	7.390	1078569	1003359	7.150	4.465 #
36) L8 AR-1262-1	8.067	6.905	740686	193670	8.511	1.311 #
37) L8 AR-1262-2	8.373	7.123	1078569	1478313	5.447	11.565 #
38) L8 AR-1262-3	8.689	7.662	360647	641934	2.869	5.630 #
39) L8 AR-1262-4	8.774	7.748	316985	804891	3.399	4.373 #
40) L8 AR-1262-5	9.438	8.226	789904	39113	12.461	0.463 #
41) L9 AR-1268-1	8.689	7.662	360647	641934	1.616	2.088 #

Data Path : Z:\pestpcbsrv\HPCHEM1\ECD_P\Data\PP070925\
 Data File : PP073604.D
 Signal(s) : Signal #1: ECD1A.ch Signal #2: ECD2B.ch
 Acq On : 08 Jul 2025 13:17
 Operator : YP\AJ
 Sample : Q2509-02 10X
 Misc :
 ALS Vial : 16 Sample Multiplier: 1

Instrument :
 ECD_P
 ClientSampleId :
 AUD-25-0112

Integration File signal 1: autoint1.e
 Integration File signal 2: autoint2.e
 Quant Time: Jul 09 01:39:26 2025
 Quant Method : Z:\pestpcbsrv\HPCHEM1\ECD_P\methods\PP070825.M
 Quant Title : GC EXTRACTABLES
 QLast Update : Tue Jul 08 08:35:32 2025
 Response via : Initial Calibration
 Integrator: ChemStation

Volume Inj. : 2 µl
 Signal #1 Phase : ZB-MR1 Signal #2 Phase: ZB-MR2
 Signal #1 Info : 30Mx0.32mmx 0.50µ Signal #2 Info : 30M x 0.32mm x 0.25µm

	Compound	RT#1	RT#2	Resp#1	Resp#2	ng/ml	ng/ml
42)	L9 AR-1268-2	8.774	7.748	316985	804891	1.664	3.029 #
43)	L9 AR-1268-3	9.014	7.913	616434	760742	3.723	3.372
44)	L9 AR-1268-4	9.422	8.226	1045092	39113	15.028	0.421 #
45)	L9 AR-1268-5	9.837	8.528	998553	313778	2.166	0.509 #

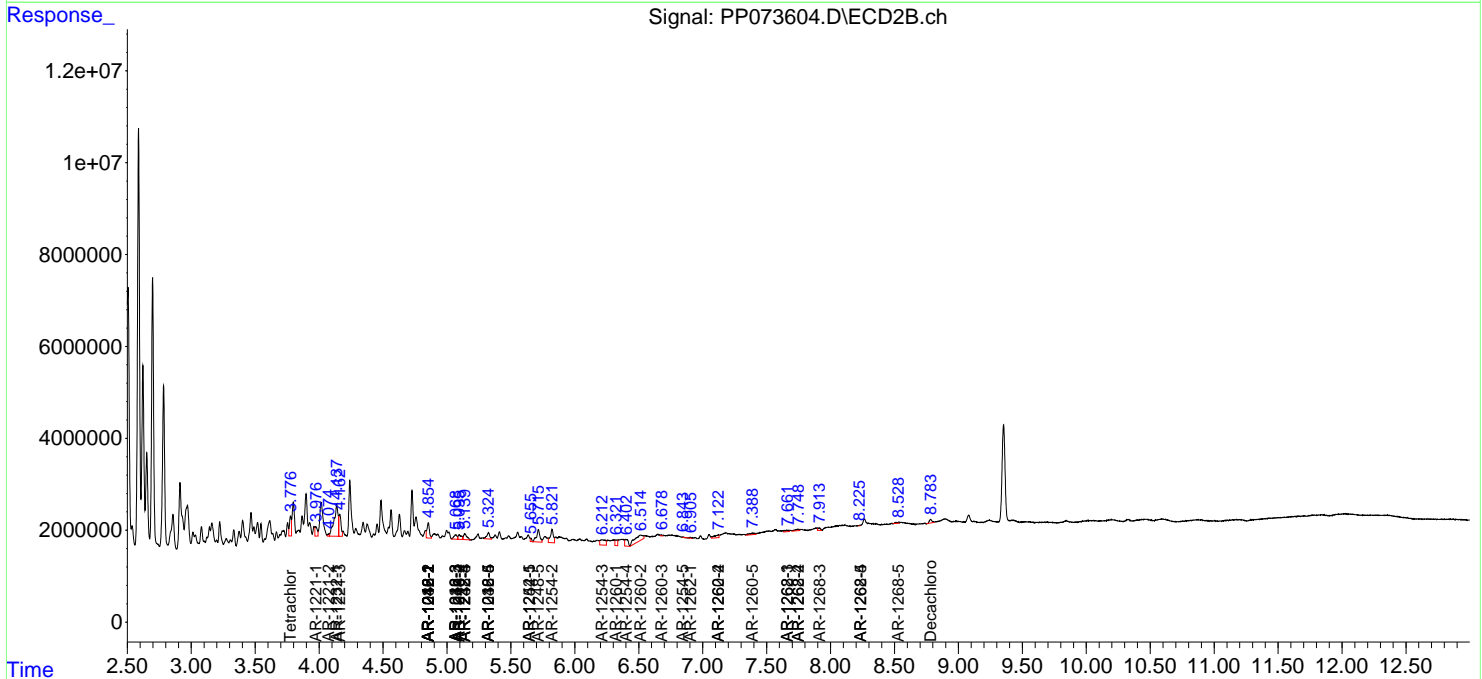
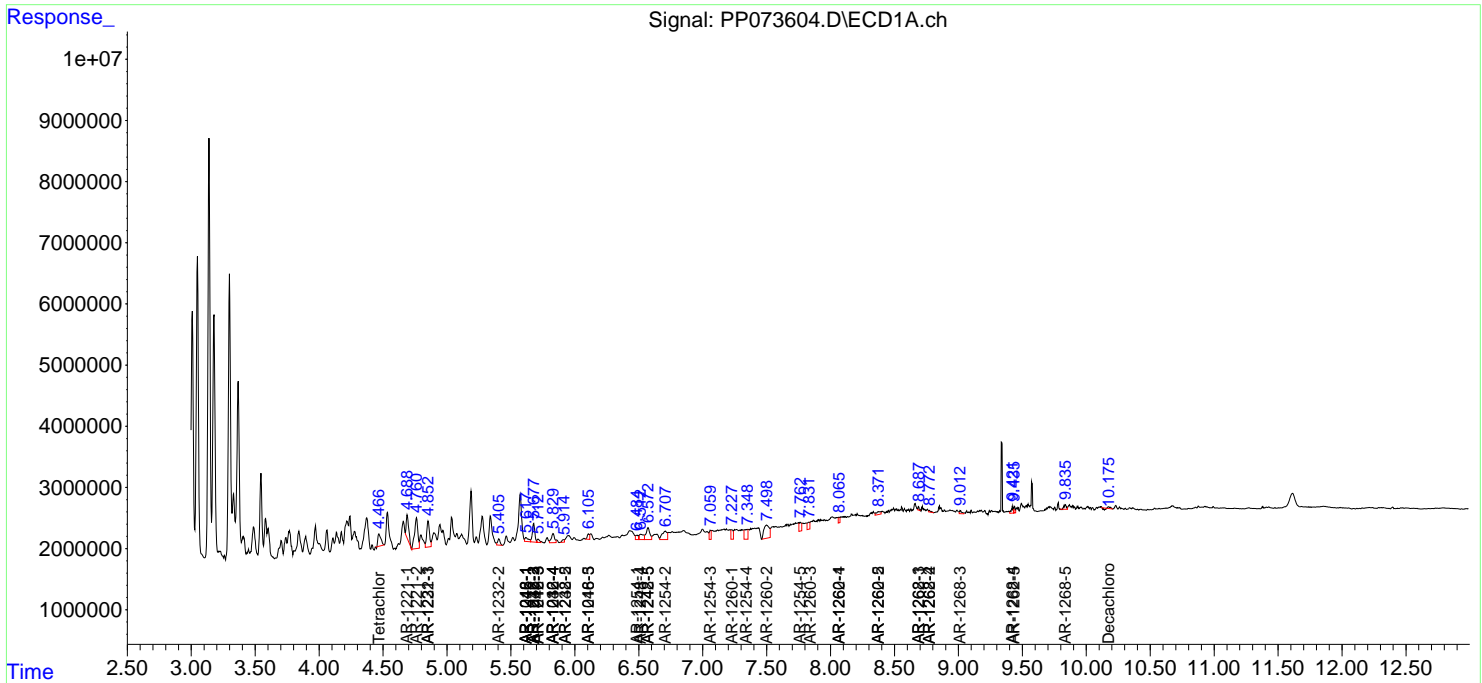
(f)=RT Delta > 1/2 Window (#)=Amounts differ by > 25% (m)=manual int.

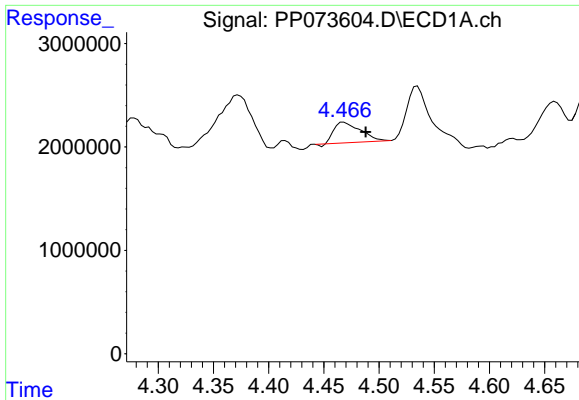
Data Path : Z:\pestpcbsrv\HPCHEM1\ECD_P\Data\PP070925\
 Data File : PP073604.D
 Signal(s) : Signal #1: ECD1A.ch Signal #2: ECD2B.ch
 Acq On : 08 Jul 2025 13:17
 Operator : YP\AJ
 Sample : Q2509-02 10X
 Misc :
 ALS Vial : 16 Sample Multiplier: 1

Instrument :
 ECD_P
 ClientSampleId :
 AUD-25-0112

Integration File signal 1: autoint1.e
 Integration File signal 2: autoint2.e
 Quant Time: Jul 09 01:39:26 2025
 Quant Method : Z:\pestpcbsrv\HPCHEM1\ECD_P\methods\PP070825.M
 Quant Title : GC EXTRACTABLES
 QLast Update : Tue Jul 08 08:35:32 2025
 Response via : Initial Calibration
 Integrator: ChemStation

Volume Inj. : 2 µl
 Signal #1 Phase : ZB-MR1 Signal #2 Phase: ZB-MR2
 Signal #1 Info : 30Mx0.32mmx 0.50µ Signal #2 Info : 30M x 0.32mm x 0.25µm

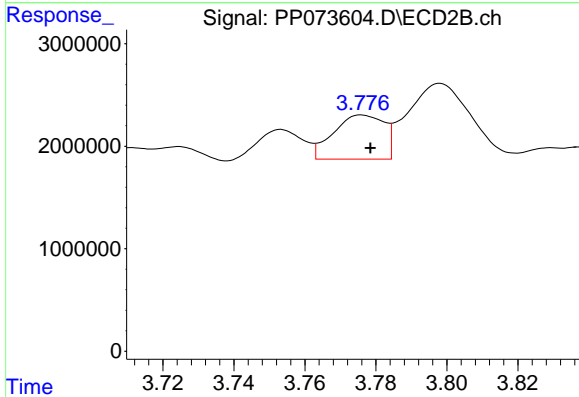




#1 Tetrachloro-m-xylene

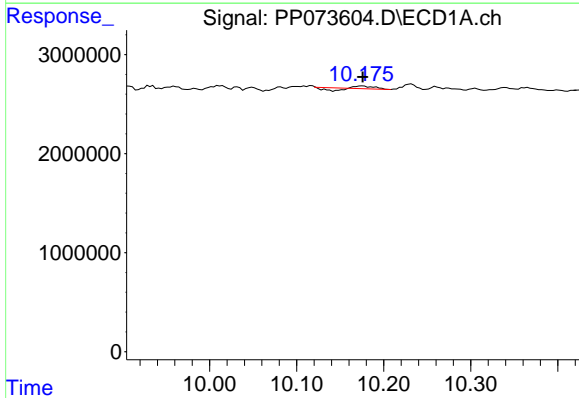
R.T.: 4.468 min
 Delta R.T.: -0.020 min
 Response: 3304558
 Conc: 2.41 ng/ml

Instrument :
 ECD_P
 ClientSampleId :
 AUD-25-0112



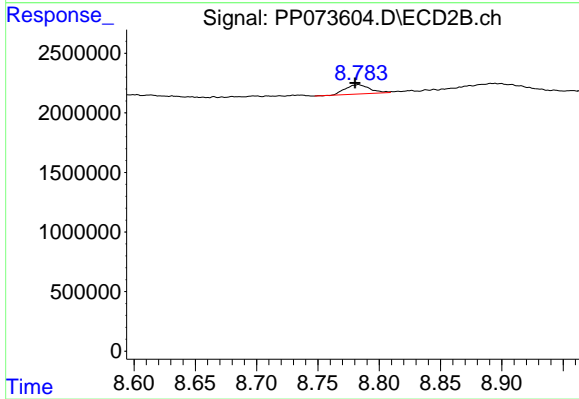
#1 Tetrachloro-m-xylene

R.T.: 3.776 min
 Delta R.T.: -0.002 min
 Response: 4255871
 Conc: 2.31 ng/ml



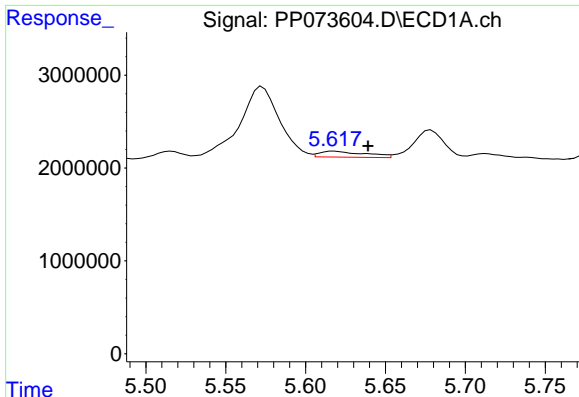
#2 Decachlorobiphenyl

R.T.: 10.176 min
 Delta R.T.: 0.000 min
 Response: 134547
 Conc: 0.12 ng/ml



#2 Decachlorobiphenyl

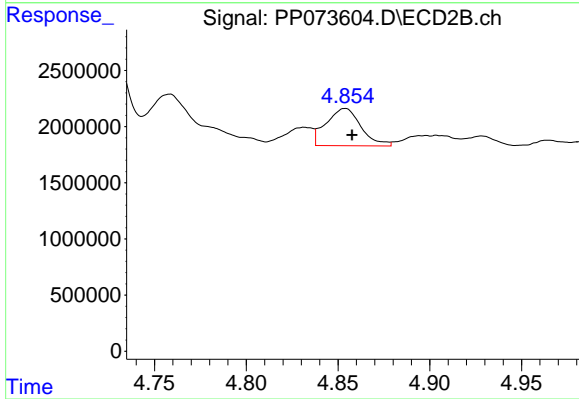
R.T.: 8.783 min
 Delta R.T.: 0.003 min
 Response: 1082476
 Conc: 0.82 ng/ml



#3 AR-1016-1

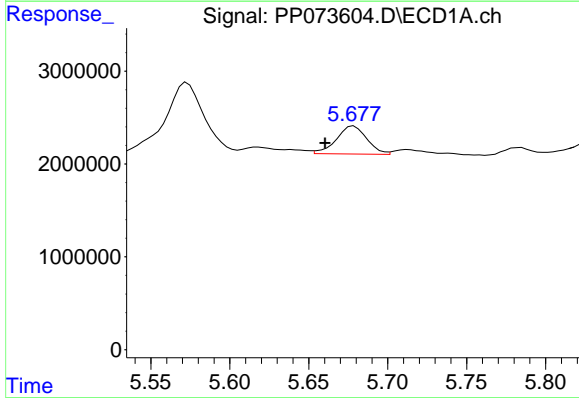
R.T.: 5.618 min
 Delta R.T.: -0.021 min
 Response: 1277569
 Conc: 26.89 ng/ml

Instrument :
 ECD_P
 ClientSampleId :
 AUD-25-0112



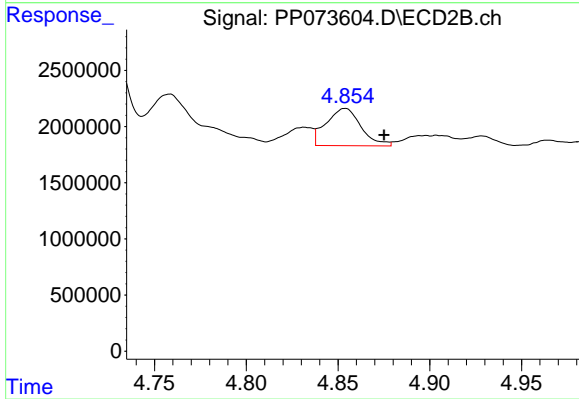
#3 AR-1016-1

R.T.: 4.854 min
 Delta R.T.: -0.004 min
 Response: 4388110
 Conc: 64.37 ng/ml



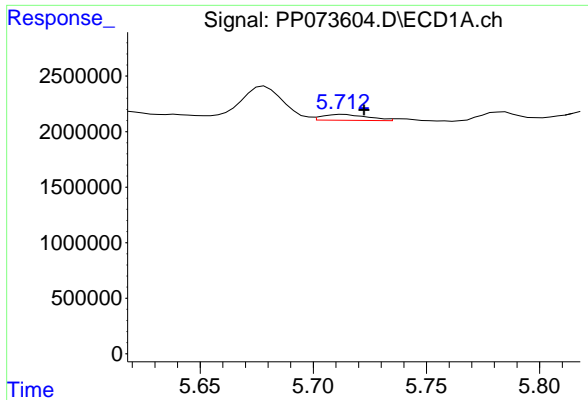
#4 AR-1016-2

R.T.: 5.678 min
 Delta R.T.: 0.018 min
 Response: 4043120
 Conc: 56.77 ng/ml



#4 AR-1016-2

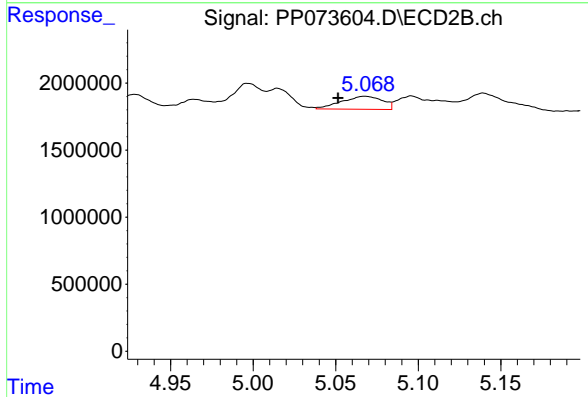
R.T.: 4.854 min
 Delta R.T.: -0.021 min
 Response: 4388110
 Conc: 43.07 ng/ml



#5 AR-1016-3

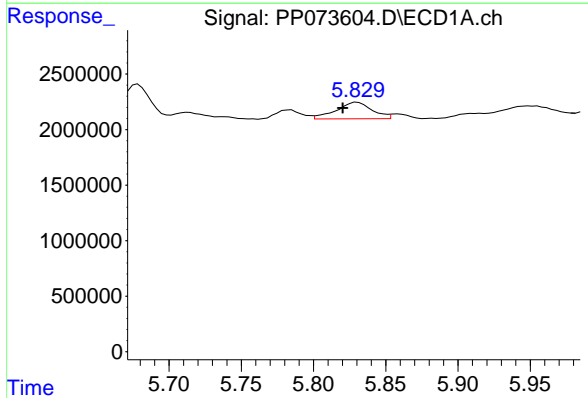
R.T.: 5.713 min
 Delta R.T.: -0.009 min
 Response: 738809
 Conc: 16.92 ng/ml

Instrument :
 ECD_P
 ClientSampleId :
 AUD-25-0112



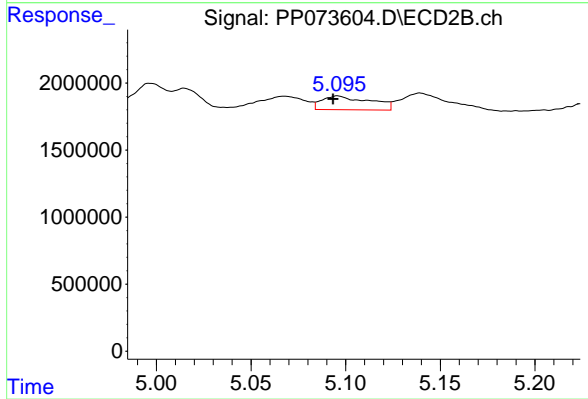
#5 AR-1016-3

R.T.: 5.068 min
 Delta R.T.: 0.016 min
 Response: 1677444
 Conc: 31.00 ng/ml



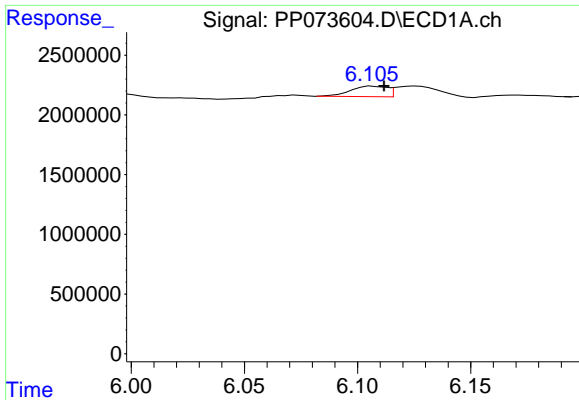
#6 AR-1016-4

R.T.: 5.830 min
 Delta R.T.: 0.010 min
 Response: 2552547
 Conc: 71.01 ng/ml



#6 AR-1016-4

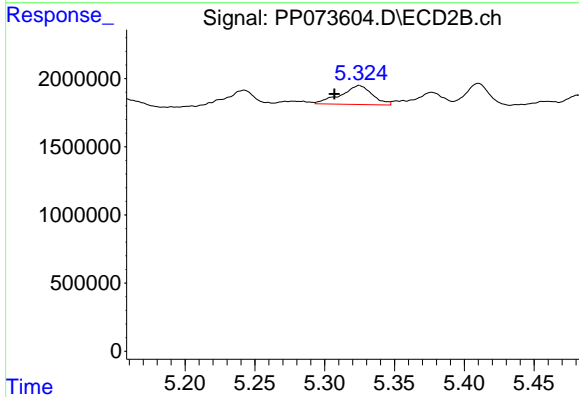
R.T.: 5.096 min
 Delta R.T.: 0.003 min
 Response: 1835955
 Conc: 41.84 ng/ml



#7 AR-1016-5

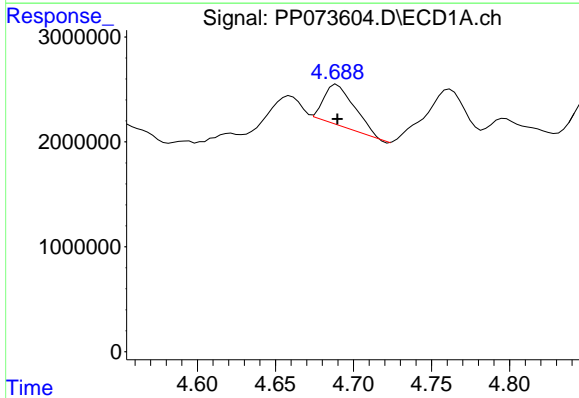
R.T.: 6.107 min
 Delta R.T.: -0.005 min
 Response: 975619
 Conc: 31.14 ng/ml

Instrument :
 ECD_P
 ClientSampleId :
 AUD-25-0112



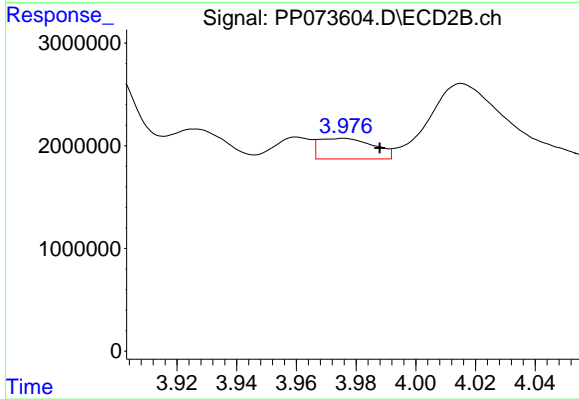
#7 AR-1016-5

R.T.: 5.325 min
 Delta R.T.: 0.018 min
 Response: 2203959
 Conc: 40.38 ng/ml



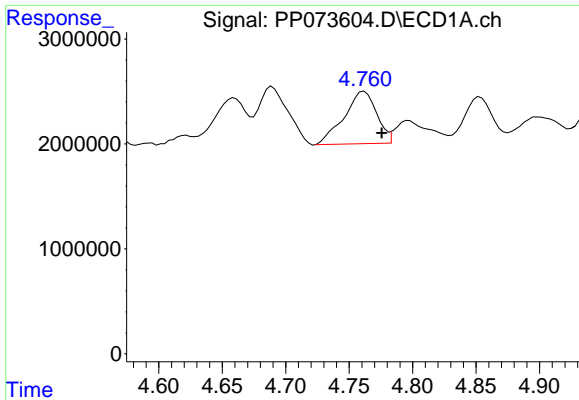
#8 AR-1221-1

R.T.: 4.689 min
 Delta R.T.: 0.000 min
 Response: 5351996
 Conc: 299.56 ng/ml



#8 AR-1221-1

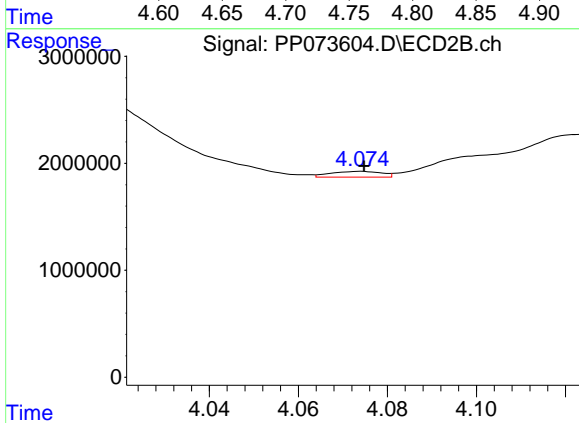
R.T.: 3.976 min
 Delta R.T.: -0.012 min
 Response: 2551841
 Conc: 94.36 ng/ml



#9 AR-1221-2

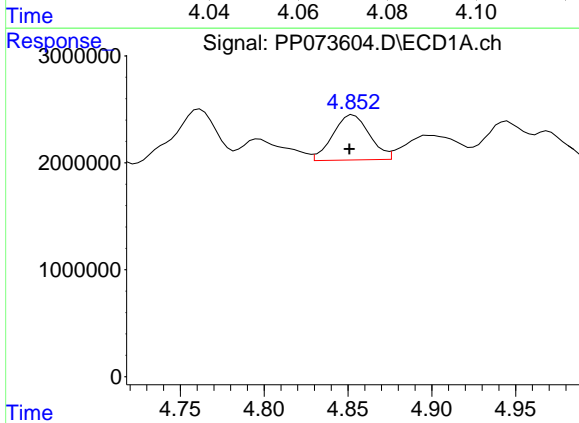
R.T.: 4.762 min
 Delta R.T.: -0.014 min
 Response: 8907506
 Conc: 659.60 ng/ml

Instrument :
 ECD_P
 ClientSampleId :
 AUD-25-0112



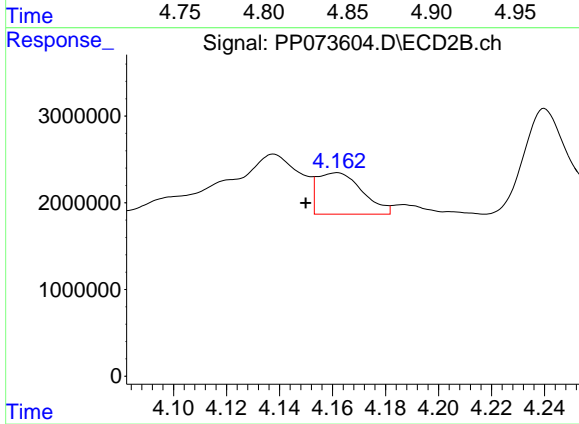
#9 AR-1221-2

R.T.: 4.074 min
 Delta R.T.: 0.000 min
 Response: 430279
 Conc: 21.13 ng/ml



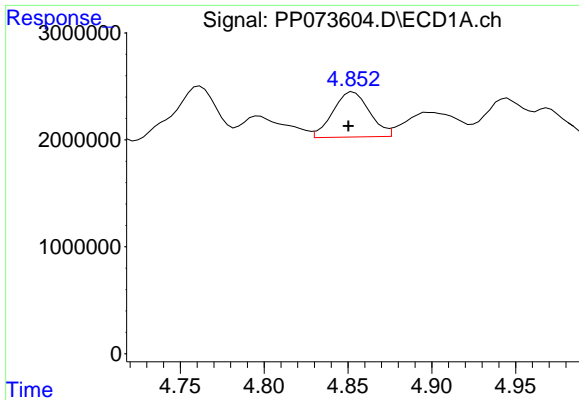
#10 AR-1221-3

R.T.: 4.853 min
 Delta R.T.: 0.002 min
 Response: 6418099
 Conc: 154.26 ng/ml



#10 AR-1221-3

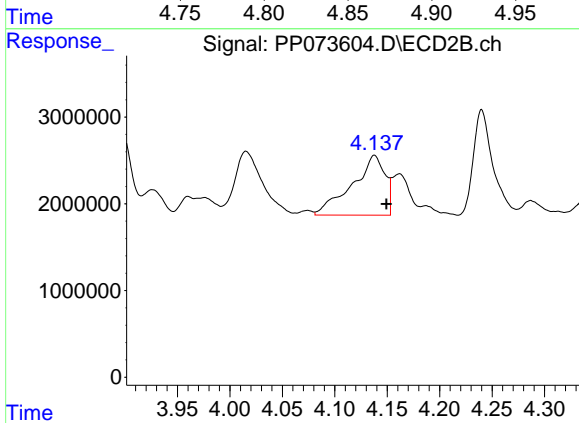
R.T.: 4.162 min
 Delta R.T.: 0.012 min
 Response: 5632462
 Conc: 91.66 ng/ml



#11 AR-1232-1

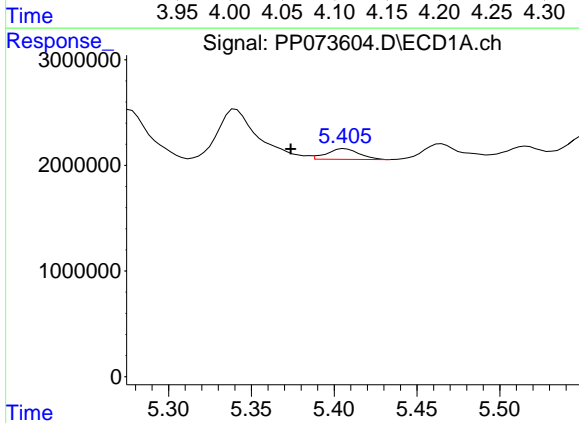
R.T.: 4.853 min
 Delta R.T.: 0.003 min
 Response: 6418099
 Conc: 196.57 ng/ml

Instrument :
 ECD_P
 ClientSampleId :
 AUD-25-0112



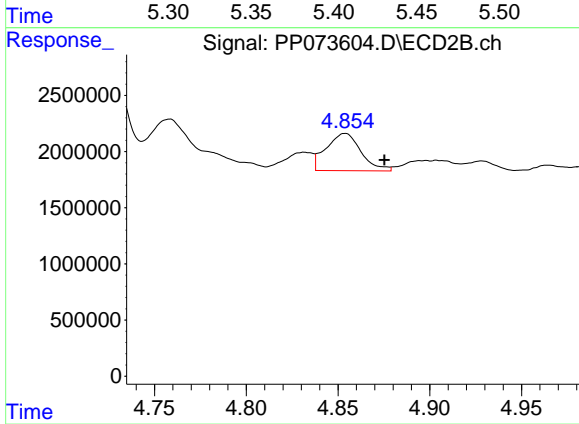
#11 AR-1232-1

R.T.: 4.138 min
 Delta R.T.: -0.012 min
 Response: 15069258
 Conc: 323.28 ng/ml



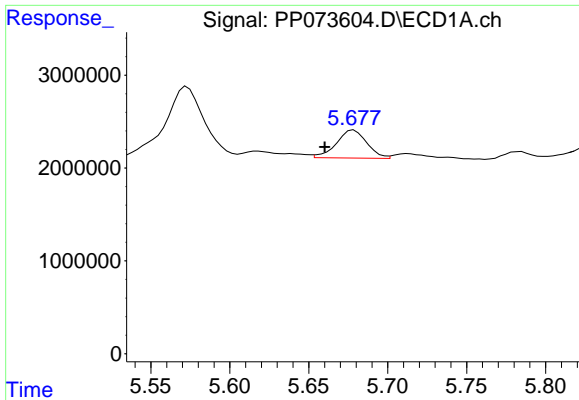
#12 AR-1232-2

R.T.: 5.406 min
 Delta R.T.: 0.032 min
 Response: 1388255
 Conc: 85.41 ng/ml



#12 AR-1232-2

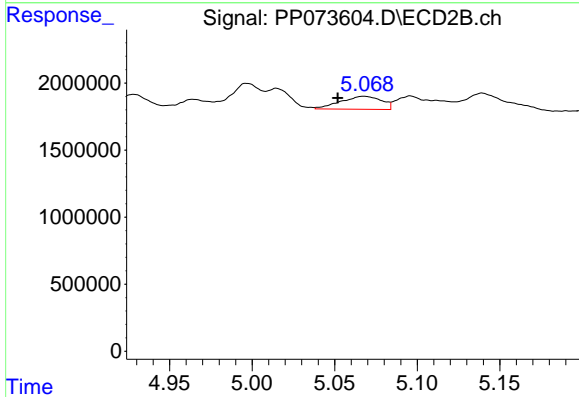
R.T.: 4.854 min
 Delta R.T.: -0.021 min
 Response: 4388110
 Conc: 92.07 ng/ml



#13 AR-1232-3

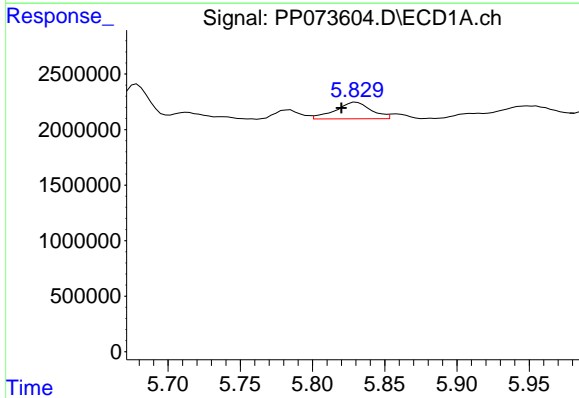
R.T.: 5.678 min
 Delta R.T.: 0.018 min
 Response: 4043120
 Conc: 122.54 ng/ml

Instrument :
 ECD_P
 ClientSampleId :
 AUD-25-0112



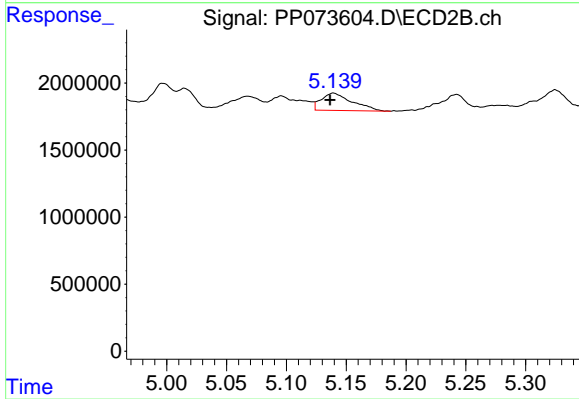
#13 AR-1232-3

R.T.: 5.068 min
 Delta R.T.: 0.016 min
 Response: 1677444
 Conc: 67.02 ng/ml



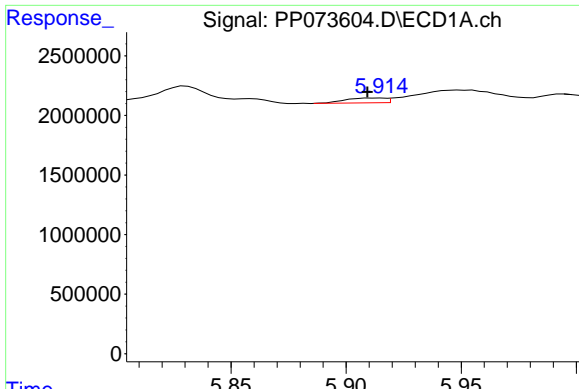
#14 AR-1232-4

R.T.: 5.830 min
 Delta R.T.: 0.010 min
 Response: 2552547
 Conc: 155.22 ng/ml



#14 AR-1232-4

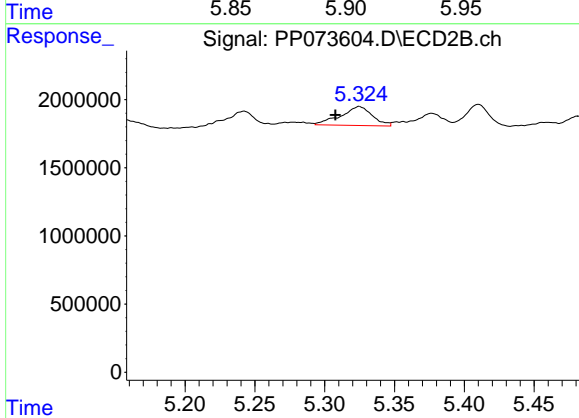
R.T.: 5.139 min
 Delta R.T.: 0.003 min
 Response: 2334714
 Conc: 107.81 ng/ml



#15 AR-1232-5

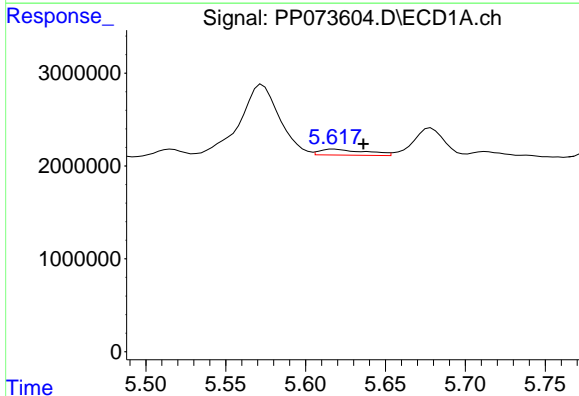
R.T.: 5.915 min
Delta R.T.: 0.005 min
Response: 489498
Conc: 46.31 ng/ml

Instrument :
ECD_P
ClientSampleId :
AUD-25-0112



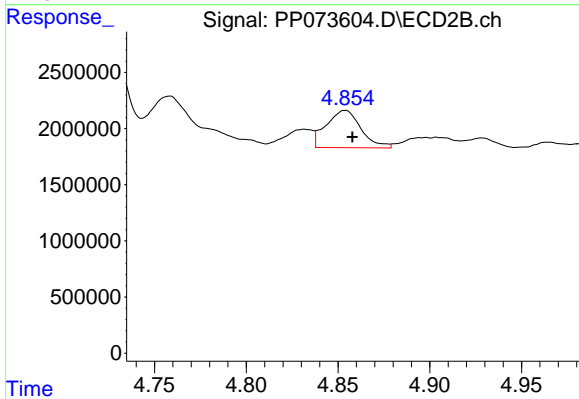
#15 AR-1232-5

R.T.: 5.325 min
Delta R.T.: 0.017 min
Response: 2203959
Conc: 97.68 ng/ml



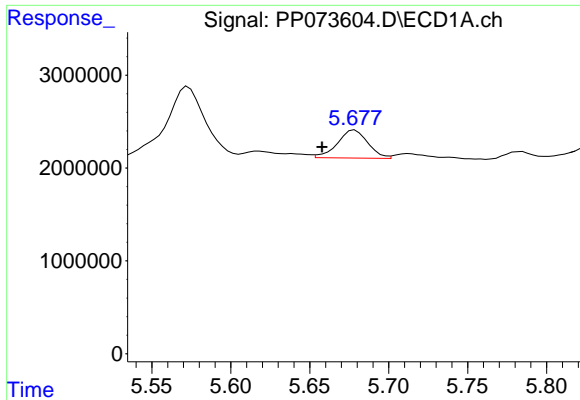
#16 AR-1242-1

R.T.: 5.618 min
Delta R.T.: -0.018 min
Response: 1277569
Conc: 33.45 ng/ml



#16 AR-1242-1

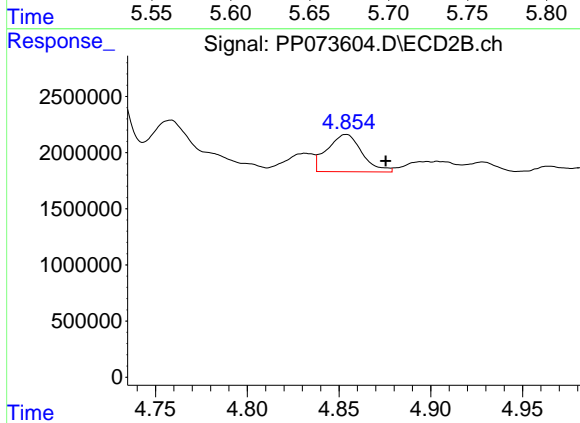
R.T.: 4.854 min
Delta R.T.: -0.004 min
Response: 4388110
Conc: 75.97 ng/ml



#17 AR-1242-2

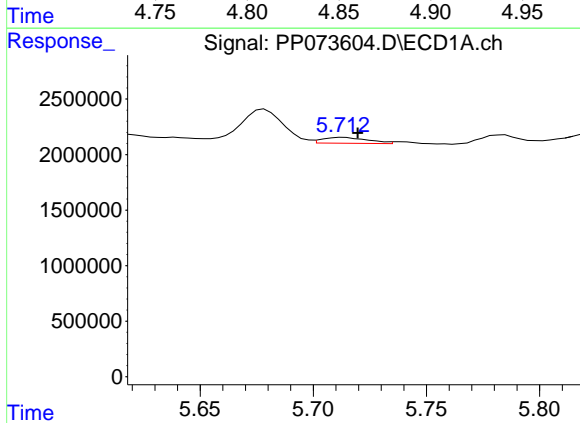
R.T.: 5.678 min
 Delta R.T.: 0.021 min
 Response: 4043120
 Conc: 67.52 ng/ml

Instrument :
 ECD_P
 ClientSampleId :
 AUD-25-0112



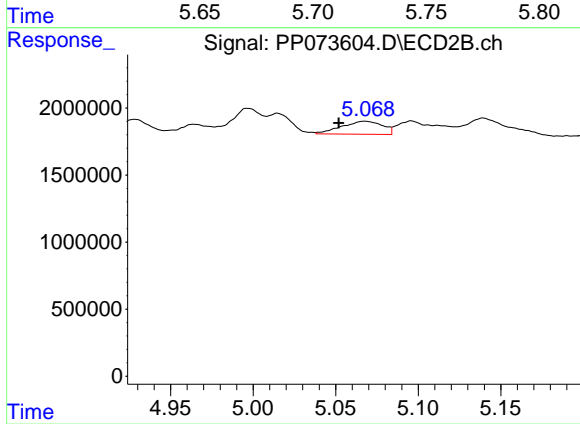
#17 AR-1242-2

R.T.: 4.854 min
 Delta R.T.: -0.022 min
 Response: 4388110
 Conc: 50.76 ng/ml



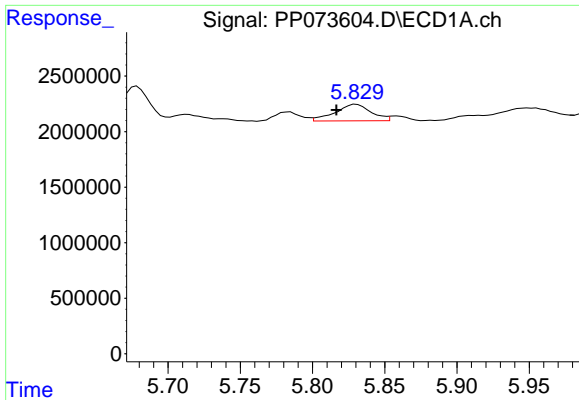
#18 AR-1242-3

R.T.: 5.713 min
 Delta R.T.: -0.006 min
 Response: 738809
 Conc: 20.17 ng/ml



#18 AR-1242-3

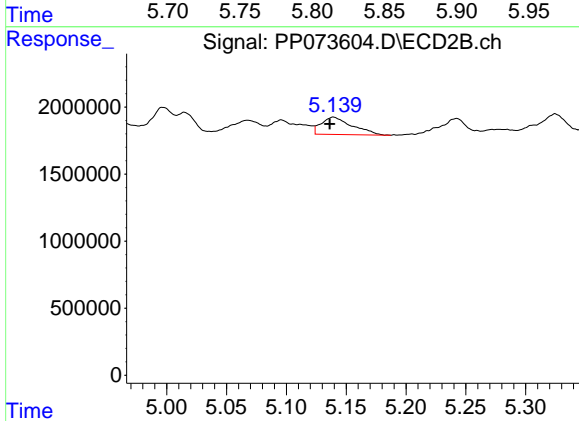
R.T.: 5.068 min
 Delta R.T.: 0.016 min
 Response: 1677444
 Conc: 36.51 ng/ml



#19 AR-1242-4

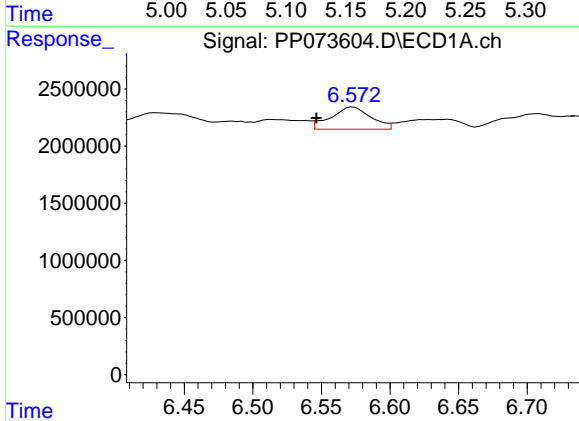
R.T.: 5.830 min
 Delta R.T.: 0.014 min
 Response: 2552547
 Conc: 79.43 ng/ml

Instrument :
 ECD_P
 ClientSampleId :
 AUD-25-0112



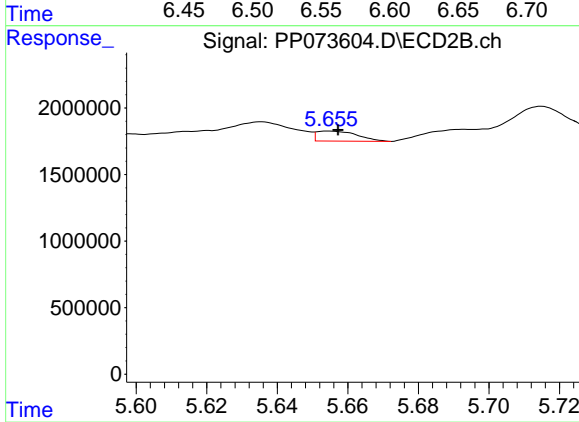
#19 AR-1242-4

R.T.: 5.139 min
 Delta R.T.: 0.003 min
 Response: 2334714
 Conc: 52.75 ng/ml



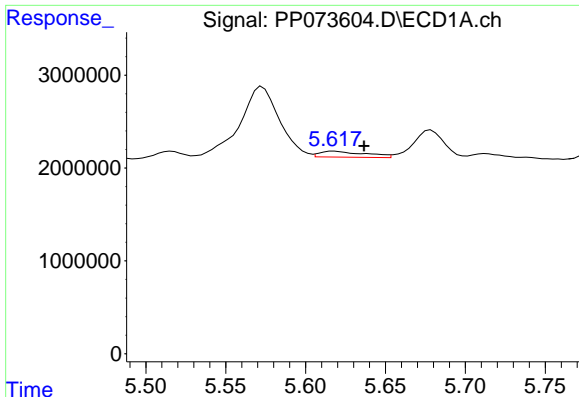
#20 AR-1242-5

R.T.: 6.573 min
 Delta R.T.: 0.027 min
 Response: 3930248
 Conc: 120.06 ng/ml



#20 AR-1242-5

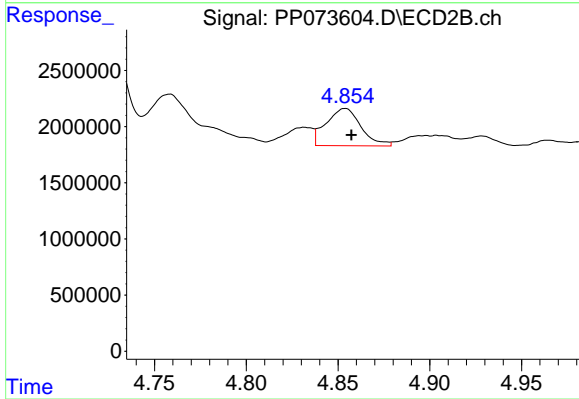
R.T.: 5.655 min
 Delta R.T.: -0.002 min
 Response: 597807
 Conc: 10.82 ng/ml



#21 AR-1248-1

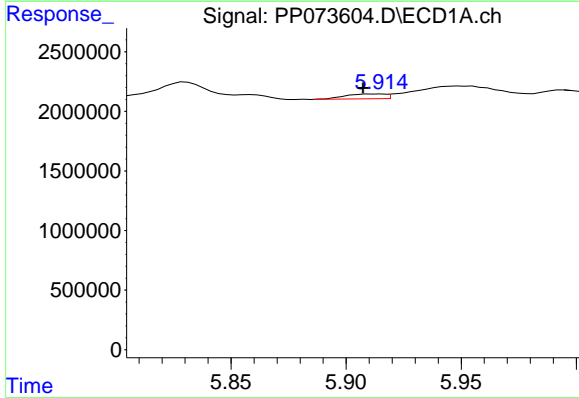
R.T.: 5.618 min
 Delta R.T.: -0.018 min
 Response: 1277569
 Conc: 41.38 ng/ml

Instrument :
 ECD_P
 ClientSampleId :
 AUD-25-0112



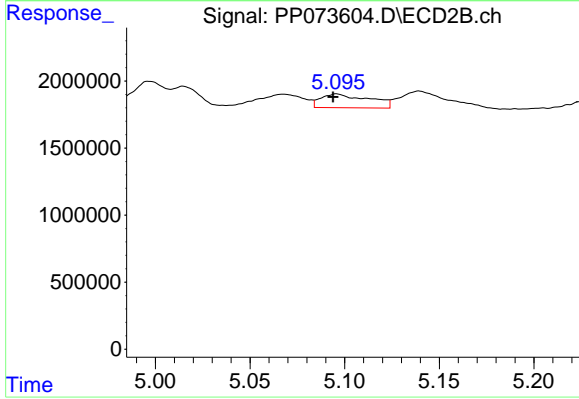
#21 AR-1248-1

R.T.: 4.854 min
 Delta R.T.: -0.003 min
 Response: 4388110
 Conc: 97.74 ng/ml



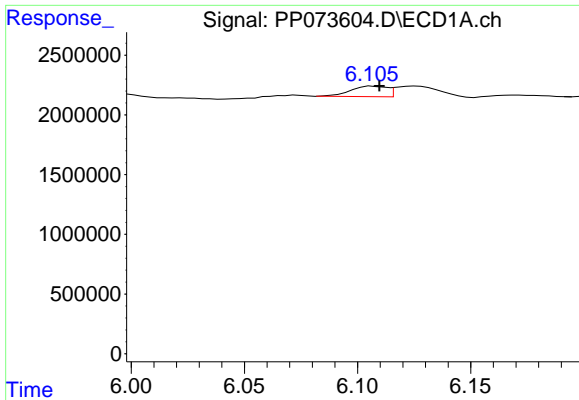
#22 AR-1248-2

R.T.: 5.915 min
 Delta R.T.: 0.007 min
 Response: 489498
 Conc: 12.26 ng/ml



#22 AR-1248-2

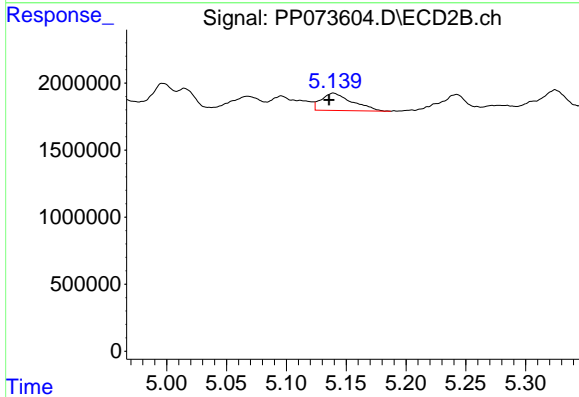
R.T.: 5.096 min
 Delta R.T.: 0.002 min
 Response: 1835955
 Conc: 29.84 ng/ml



#23 AR-1248-3

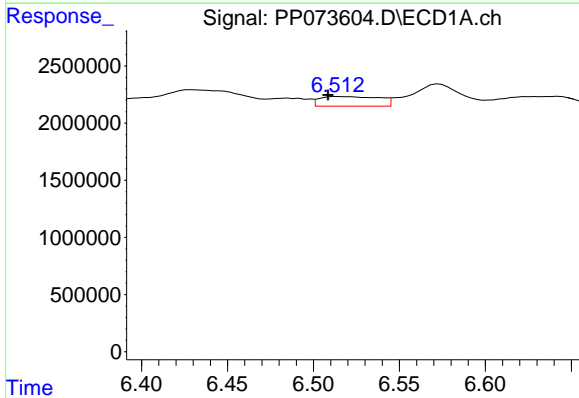
R.T.: 6.107 min
 Delta R.T.: -0.003 min
 Response: 975619
 Conc: 21.97 ng/ml

Instrument :
 ECD_P
 ClientSampleId :
 AUD-25-0112



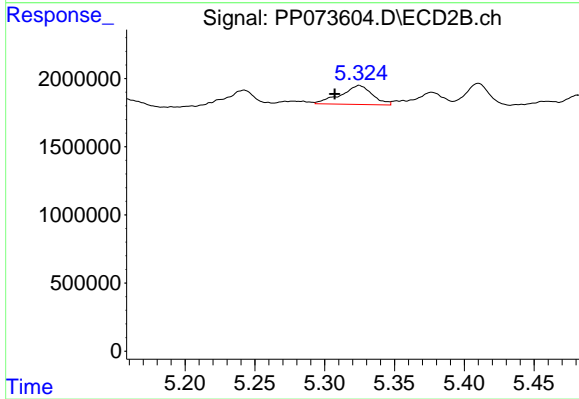
#23 AR-1248-3

R.T.: 5.139 min
 Delta R.T.: 0.004 min
 Response: 2334714
 Conc: 36.44 ng/ml



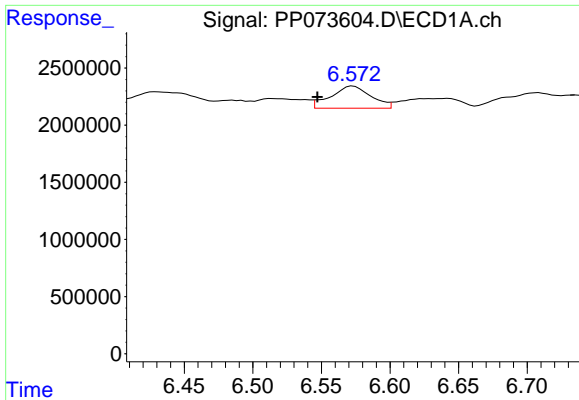
#24 AR-1248-4

R.T.: 6.514 min
 Delta R.T.: 0.006 min
 Response: 2045180
 Conc: 37.13 ng/ml



#24 AR-1248-4

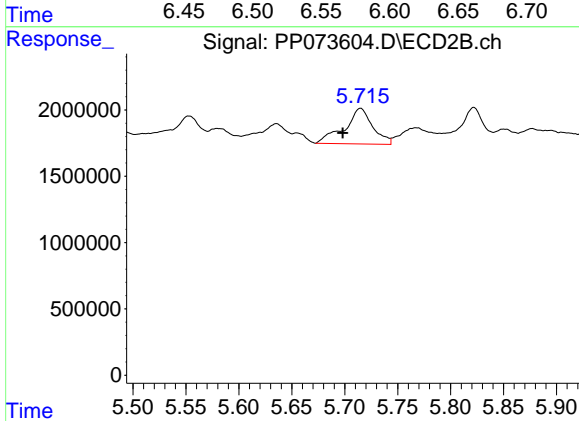
R.T.: 5.325 min
 Delta R.T.: 0.018 min
 Response: 2203959
 Conc: 29.24 ng/ml



#25 AR-1248-5

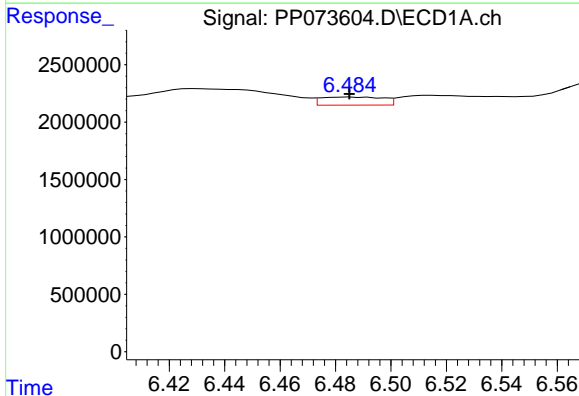
R.T.: 6.573 min
 Delta R.T.: 0.026 min
 Response: 3930248
 Conc: 73.07 ng/ml

Instrument :
 ECD_P
 ClientSampleId :
 AUD-25-0112



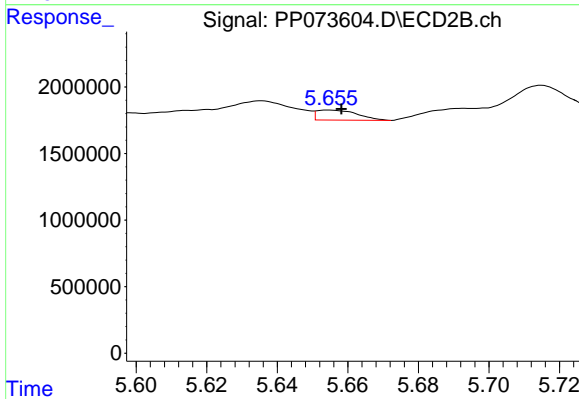
#25 AR-1248-5

R.T.: 5.715 min
 Delta R.T.: 0.017 min
 Response: 4985403
 Conc: 66.84 ng/ml



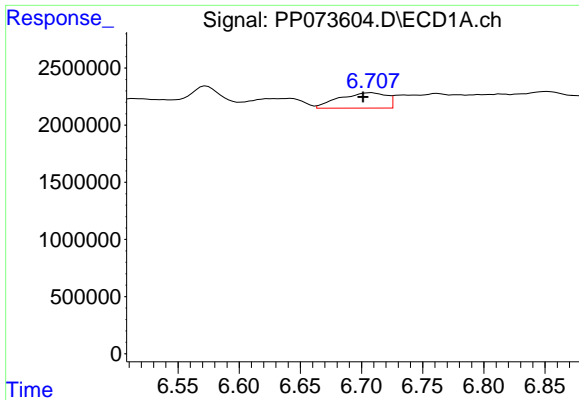
#26 AR-1254-1

R.T.: 6.485 min
 Delta R.T.: 0.000 min
 Response: 1096772
 Conc: 20.47 ng/ml



#26 AR-1254-1

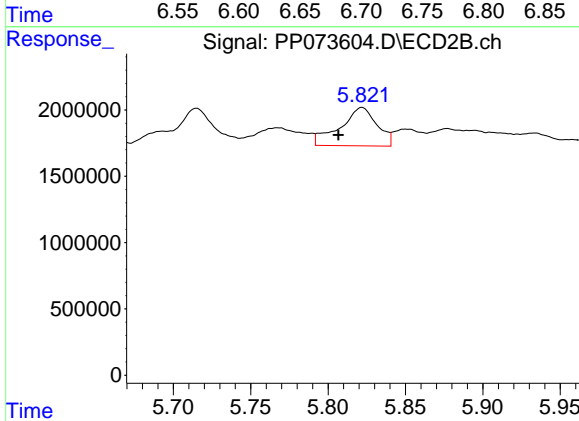
R.T.: 5.655 min
 Delta R.T.: -0.004 min
 Response: 597807
 Conc: 5.15 ng/ml



#27 AR-1254-2

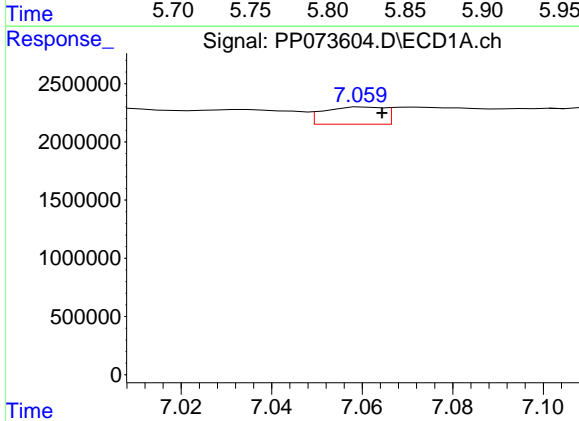
R.T.: 6.708 min
Delta R.T.: 0.007 min
Response: 3600923
Conc: 43.23 ng/ml

Instrument :
ECD_P
ClientSampleId :
AUD-25-0112



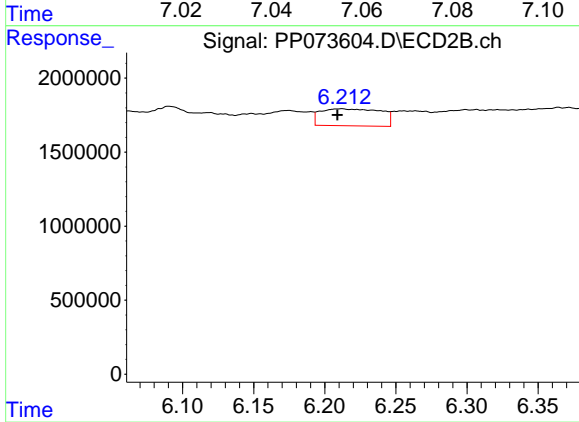
#27 AR-1254-2

R.T.: 5.822 min
Delta R.T.: 0.015 min
Response: 4813154
Conc: 47.83 ng/ml



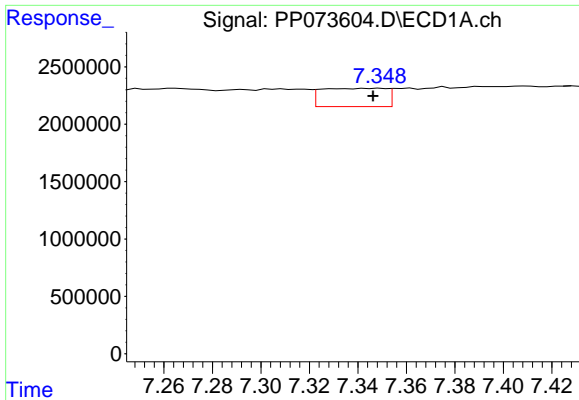
#28 AR-1254-3

R.T.: 7.061 min
Delta R.T.: -0.004 min
Response: 1362311
Conc: 15.42 ng/ml



#28 AR-1254-3

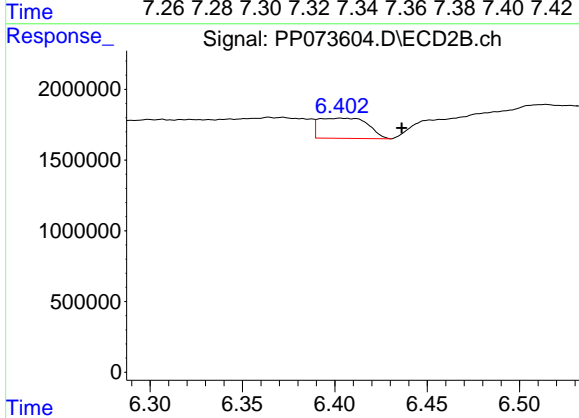
R.T.: 6.212 min
Delta R.T.: 0.003 min
Response: 3386960
Conc: 21.93 ng/ml



#29 AR-1254-4

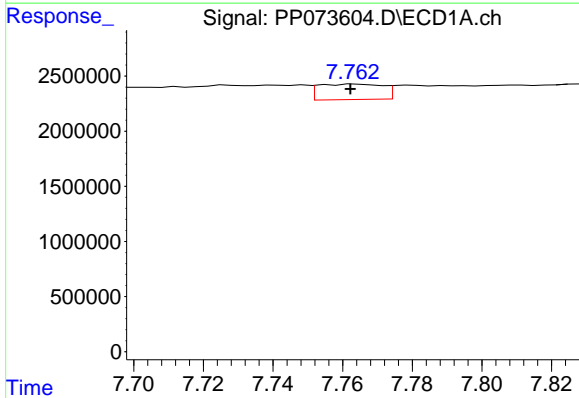
R.T.: 7.334 min
 Delta R.T.: -0.013 min
 Response: 2947486
 Conc: 37.47 ng/ml

Instrument :
 ECD_P
 ClientSampleId :
 AUD-25-0112



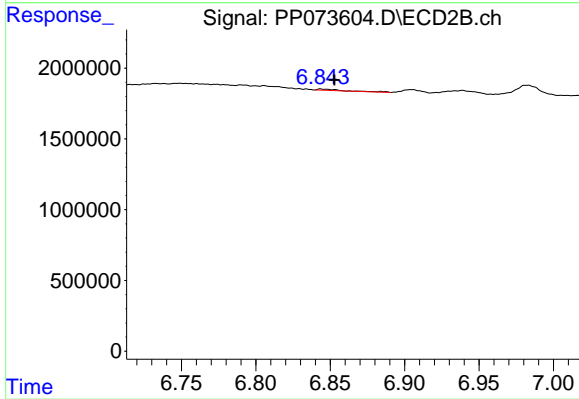
#29 AR-1254-4

R.T.: 6.403 min
 Delta R.T.: -0.033 min
 Response: 2631387
 Conc: 27.83 ng/ml



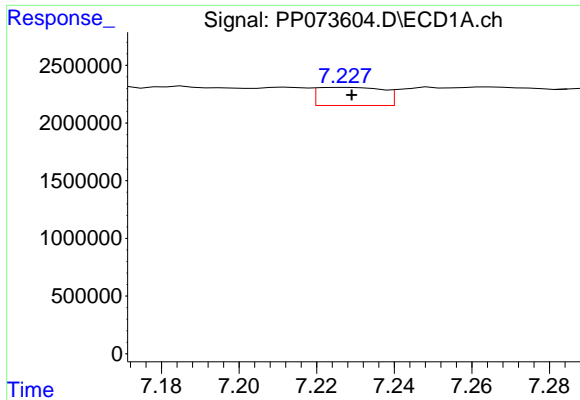
#30 AR-1254-5

R.T.: 7.764 min
 Delta R.T.: 0.001 min
 Response: 1805675
 Conc: 24.51 ng/ml



#30 AR-1254-5

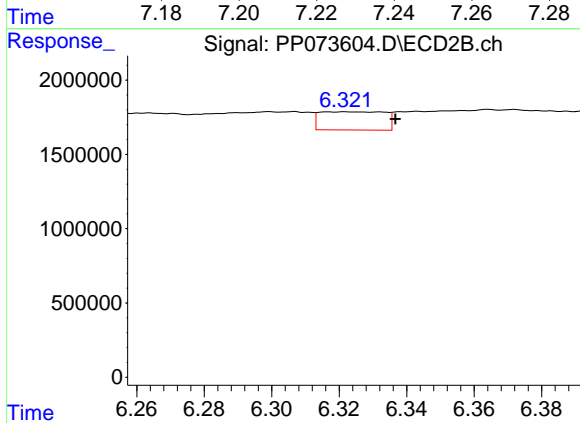
R.T.: 6.844 min
 Delta R.T.: -0.009 min
 Response: 103432
 Conc: 0.78 ng/ml



#31 AR-1260-1

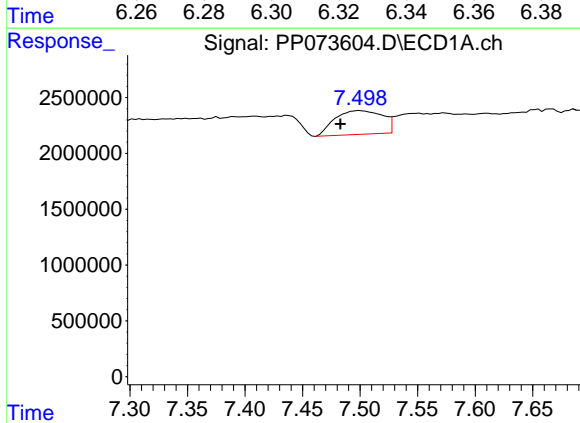
R.T.: 7.228 min
 Delta R.T.: -0.001 min
 Response: 1833892
 Conc: 31.10 ng/ml

Instrument :
 ECD_P
 ClientSampleId :
 AUD-25-0112



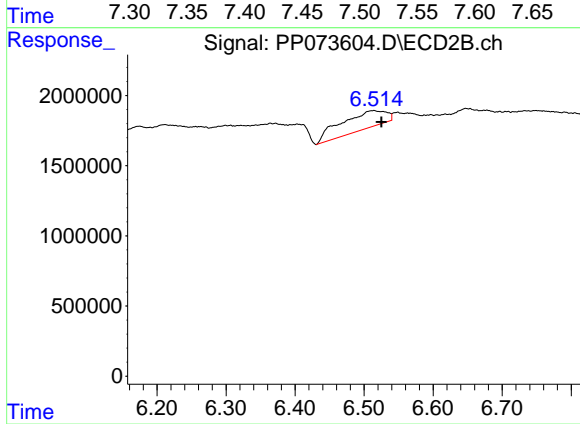
#31 AR-1260-1

R.T.: 6.322 min
 Delta R.T.: -0.015 min
 Response: 1636120
 Conc: 16.77 ng/ml



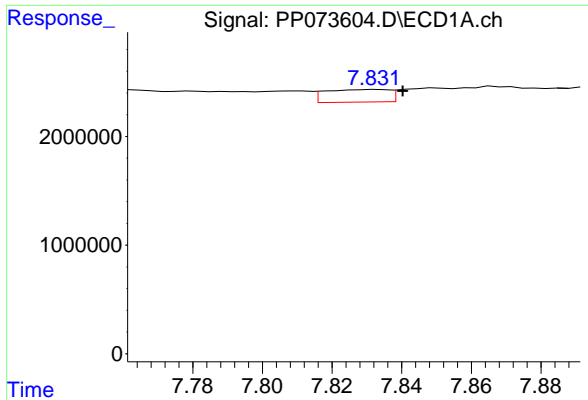
#32 AR-1260-2

R.T.: 7.499 min
 Delta R.T.: 0.017 min
 Response: 6091259
 Conc: 63.56 ng/ml



#32 AR-1260-2

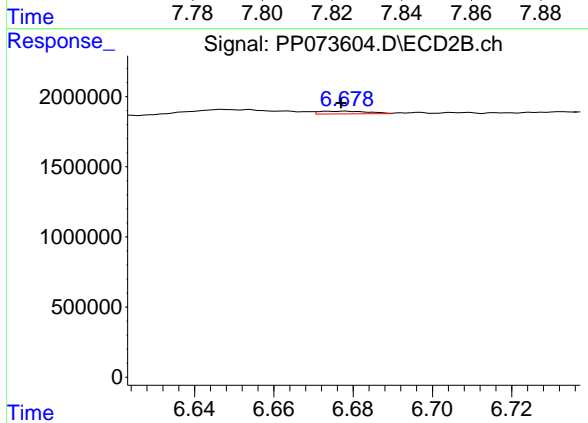
R.T.: 6.514 min
 Delta R.T.: -0.011 min
 Response: 5779941
 Conc: 47.05 ng/ml



#33 AR-1260-3

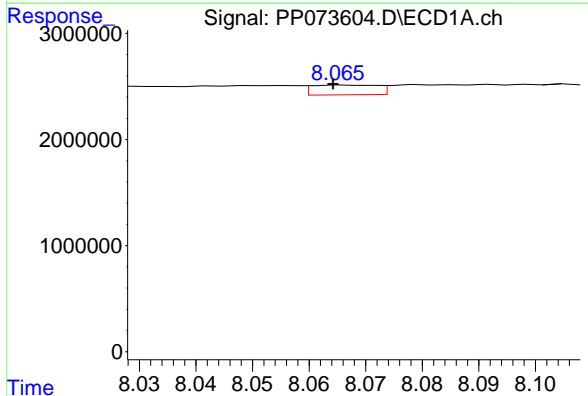
R.T.: 7.833 min
 Delta R.T.: -0.007 min
 Response: 1468416
 Conc: 20.10 ng/ml

Instrument :
 ECD_P
 ClientSampleId :
 AUD-25-0112



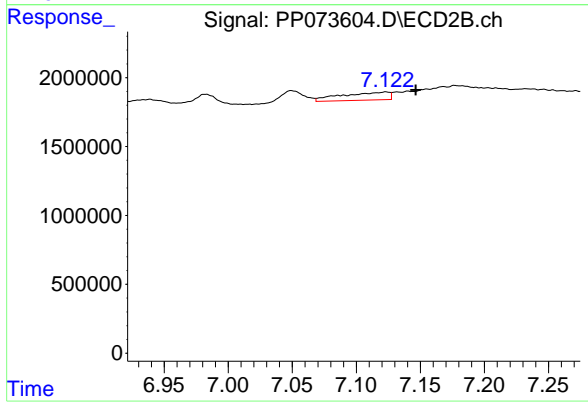
#33 AR-1260-3

R.T.: 6.678 min
 Delta R.T.: 0.000 min
 Response: 166754
 Conc: 1.52 ng/ml



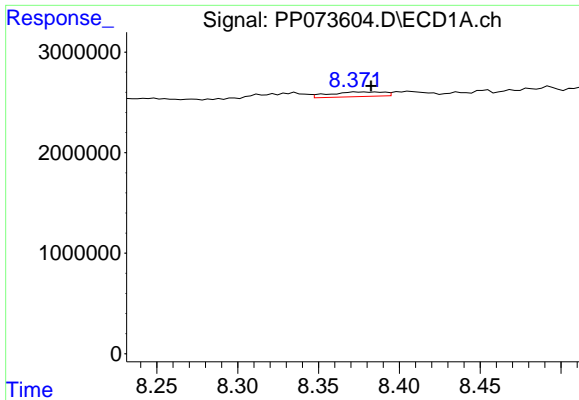
#34 AR-1260-4

R.T.: 8.067 min
 Delta R.T.: 0.002 min
 Response: 740686
 Conc: 11.34 ng/ml



#34 AR-1260-4

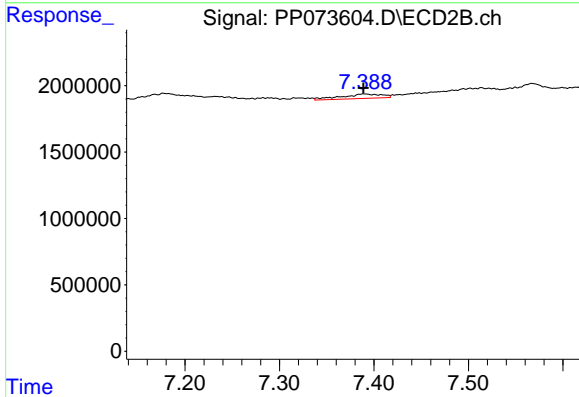
R.T.: 7.123 min
 Delta R.T.: -0.023 min
 Response: 1478313
 Conc: 16.53 ng/ml



#35 AR-1260-5

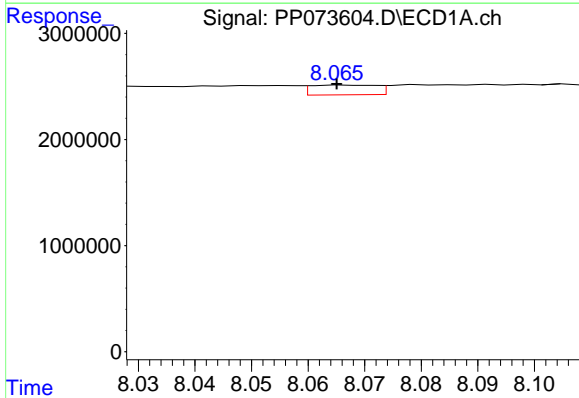
R.T.: 8.373 min
 Delta R.T.: -0.009 min
 Response: 1078569
 Conc: 7.15 ng/ml

Instrument :
 ECD_P
 ClientSampleId :
 AUD-25-0112



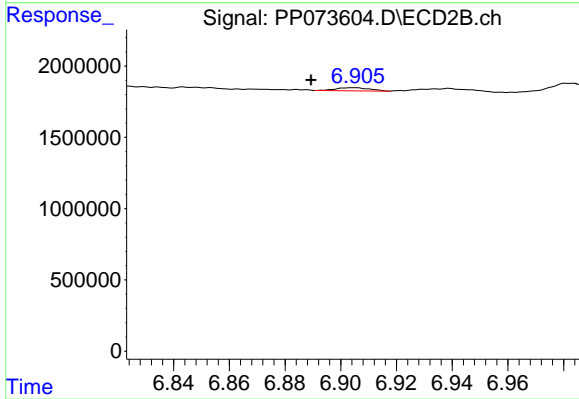
#35 AR-1260-5

R.T.: 7.390 min
 Delta R.T.: 0.000 min
 Response: 1003359
 Conc: 4.46 ng/ml



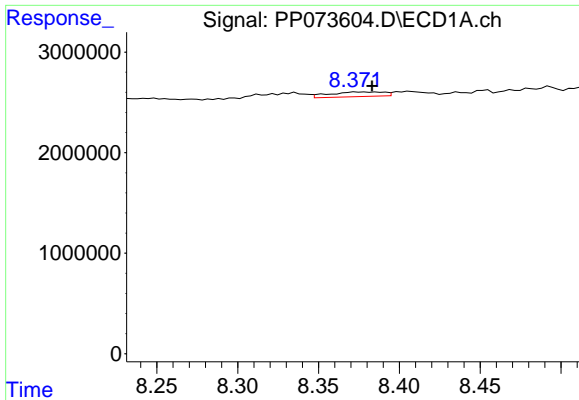
#36 AR-1262-1

R.T.: 8.067 min
 Delta R.T.: 0.002 min
 Response: 740686
 Conc: 8.51 ng/ml



#36 AR-1262-1

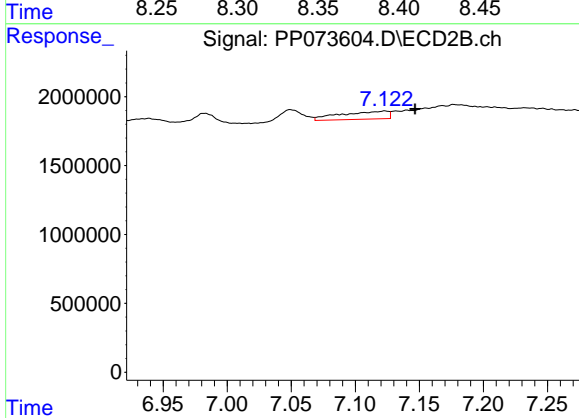
R.T.: 6.905 min
 Delta R.T.: 0.015 min
 Response: 193670
 Conc: 1.31 ng/ml



#37 AR-1262-2

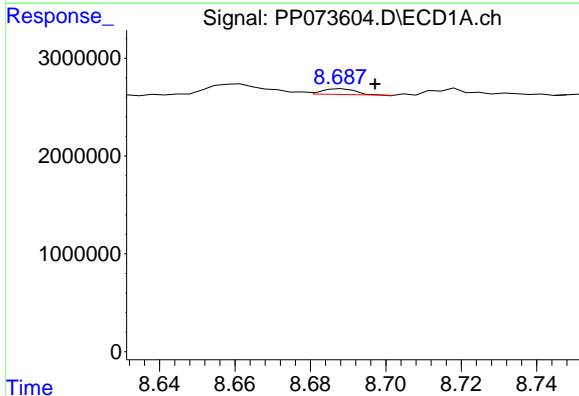
R.T.: 8.373 min
 Delta R.T.: -0.010 min
 Response: 1078569
 Conc: 5.45 ng/ml

Instrument :
 ECD_P
 ClientSampleId :
 AUD-25-0112



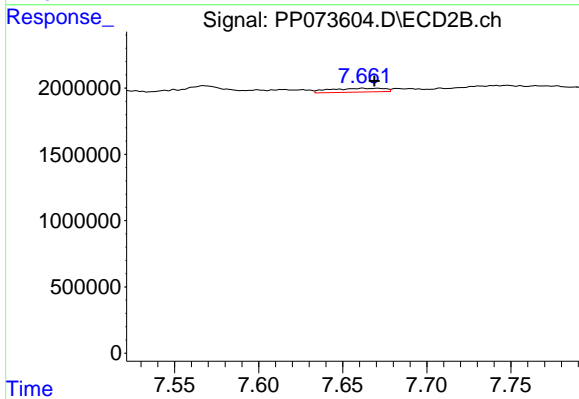
#37 AR-1262-2

R.T.: 7.123 min
 Delta R.T.: -0.024 min
 Response: 1478313
 Conc: 11.56 ng/ml



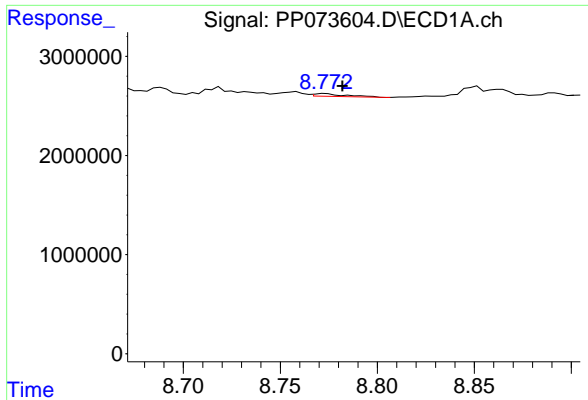
#38 AR-1262-3

R.T.: 8.689 min
 Delta R.T.: -0.009 min
 Response: 360647
 Conc: 2.87 ng/ml



#38 AR-1262-3

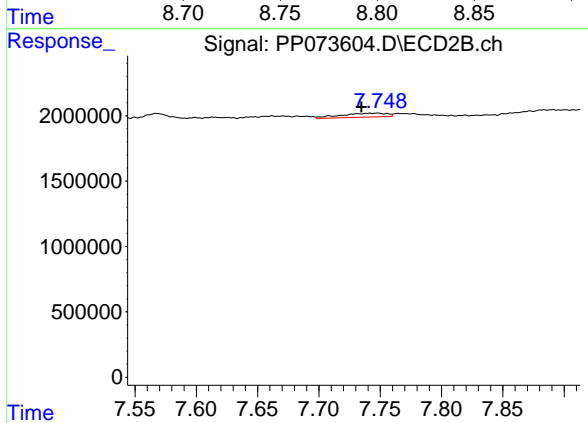
R.T.: 7.662 min
 Delta R.T.: -0.007 min
 Response: 641934
 Conc: 5.63 ng/ml



#39 AR-1262-4

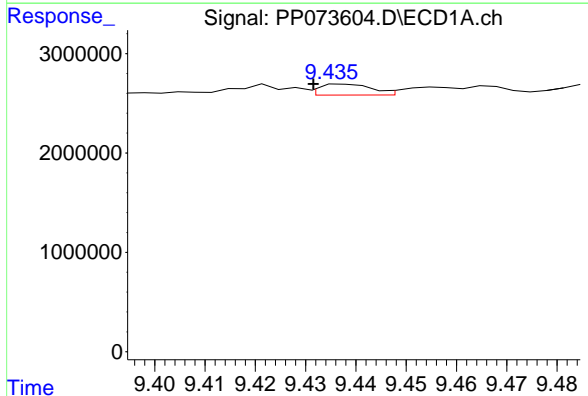
R.T.: 8.774 min
 Delta R.T.: -0.009 min
 Response: 316985
 Conc: 3.40 ng/ml

Instrument :
 ECD_P
 ClientSampleId :
 AUD-25-0112



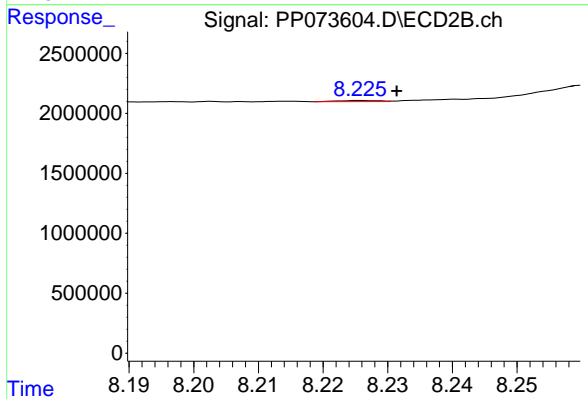
#39 AR-1262-4

R.T.: 7.748 min
 Delta R.T.: 0.013 min
 Response: 804891
 Conc: 4.37 ng/ml



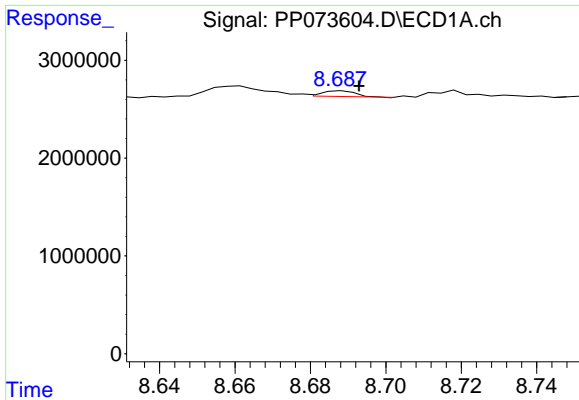
#40 AR-1262-5

R.T.: 9.438 min
 Delta R.T.: 0.007 min
 Response: 789904
 Conc: 12.46 ng/ml



#40 AR-1262-5

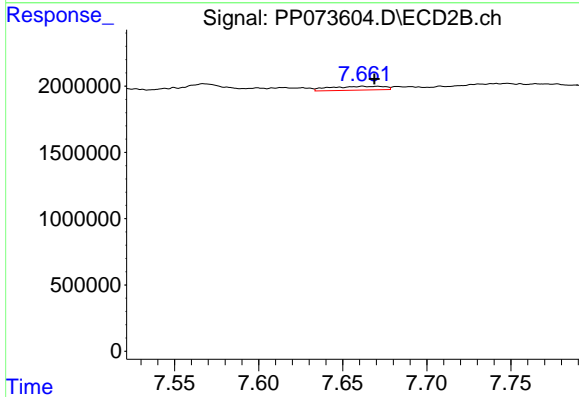
R.T.: 8.226 min
 Delta R.T.: -0.005 min
 Response: 39113
 Conc: 0.46 ng/ml



#41 AR-1268-1

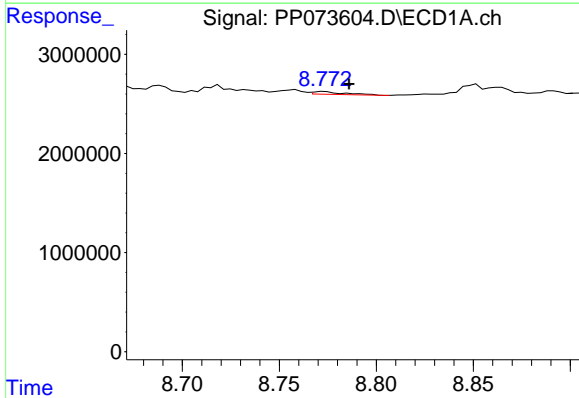
R.T.: 8.689 min
 Delta R.T.: -0.004 min
 Response: 360647
 Conc: 1.62 ng/ml

Instrument :
 ECD_P
 ClientSampleId :
 AUD-25-0112



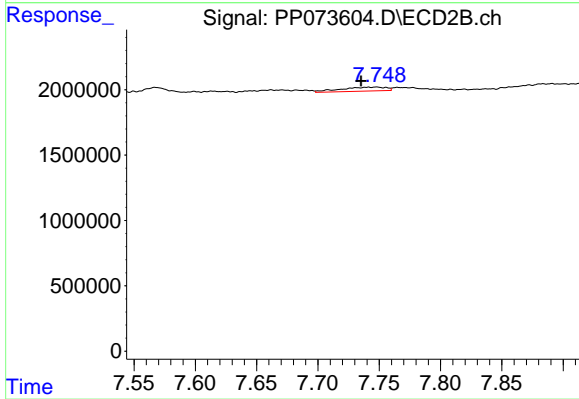
#41 AR-1268-1

R.T.: 7.662 min
 Delta R.T.: -0.007 min
 Response: 641934
 Conc: 2.09 ng/ml



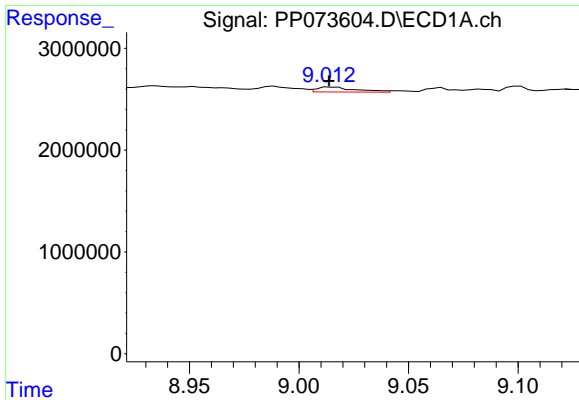
#42 AR-1268-2

R.T.: 8.774 min
 Delta R.T.: -0.012 min
 Response: 316985
 Conc: 1.66 ng/ml



#42 AR-1268-2

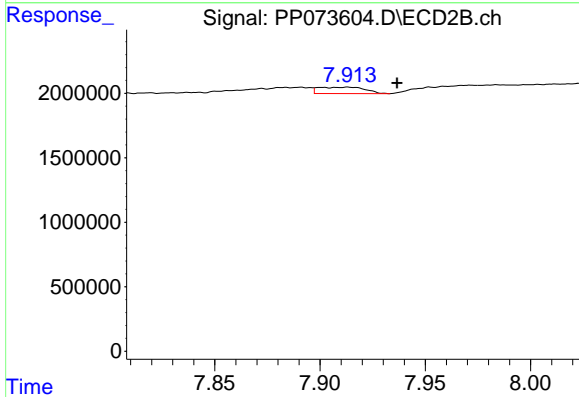
R.T.: 7.748 min
 Delta R.T.: 0.013 min
 Response: 804891
 Conc: 3.03 ng/ml



#43 AR-1268-3

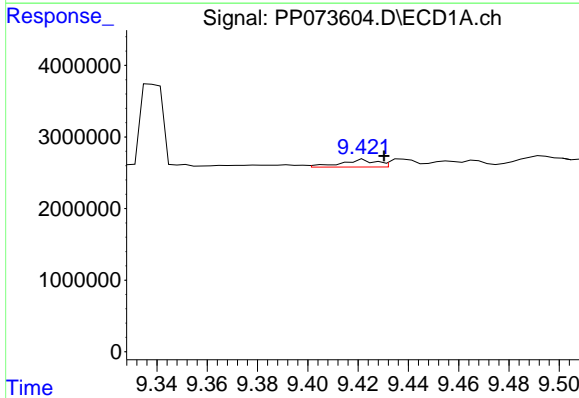
R.T.: 9.014 min
 Delta R.T.: 0.000 min
 Response: 616434
 Conc: 3.72 ng/ml

Instrument :
 ECD_P
 ClientSampleId :
 AUD-25-0112



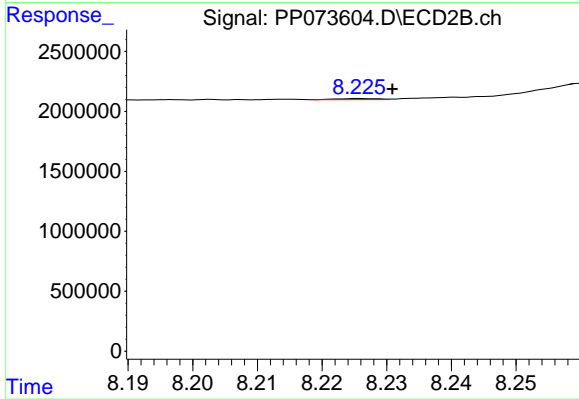
#43 AR-1268-3

R.T.: 7.913 min
 Delta R.T.: -0.023 min
 Response: 760742
 Conc: 3.37 ng/ml



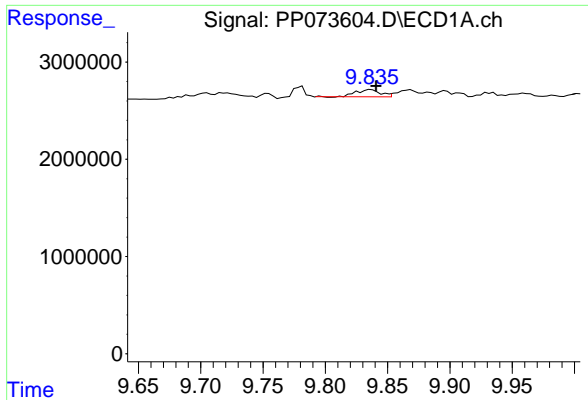
#44 AR-1268-4

R.T.: 9.422 min
 Delta R.T.: -0.008 min
 Response: 1045092
 Conc: 15.03 ng/ml



#44 AR-1268-4

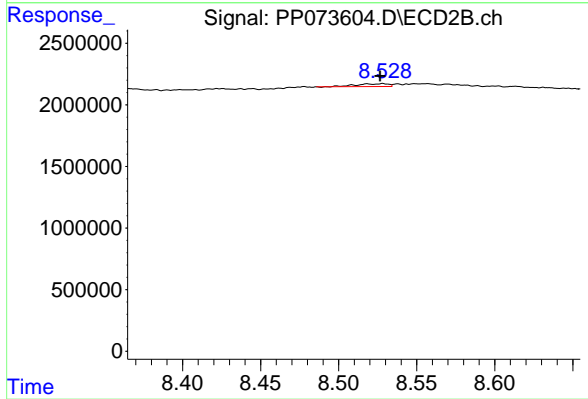
R.T.: 8.226 min
 Delta R.T.: -0.005 min
 Response: 39113
 Conc: 0.42 ng/ml



#45 AR-1268-5

R.T.: 9.837 min
 Delta R.T.: -0.004 min
 Response: 998553
 Conc: 2.17 ng/ml

Instrument :
 ECD_P
 ClientSampleId :
 AUD-25-0112



#45 AR-1268-5

R.T.: 8.528 min
 Delta R.T.: 0.002 min
 Response: 313778
 Conc: 0.51 ng/ml