

Data Path : Z:\pestpcbsrv\HPCHEM1\ECD\_P\Data\PP070925\  
 Data File : PP073605.D  
 Signal(s) : Signal #1: ECD1A.ch Signal #2: ECD2B.ch  
 Acq On : 08 Jul 2025 14:22  
 Operator : YP\AJ  
 Sample : AR1660CCC500  
 Misc :  
 ALS Vial : 3 Sample Multiplier: 1

Instrument :  
 ECD\_P  
 ClientSampleId :  
 AR1660CCC500

Integration File signal 1: autoint1.e  
 Integration File signal 2: autoint2.e  
 Quant Time: Jul 09 01:39:44 2025  
 Quant Method : Z:\pestpcbsrv\HPCHEM1\ECD\_P\methods\PP070825.M  
 Quant Title : GC EXTRACTABLES  
 QLast Update : Tue Jul 08 08:35:32 2025  
 Response via : Initial Calibration  
 Integrator: ChemStation

Volume Inj. : 2 µl  
 Signal #1 Phase : ZB-MR1 Signal #2 Phase: ZB-MR2  
 Signal #1 Info : 30Mx0.32mmx 0.50µ Signal #2 Info : 30M x 0.32mm x 0.25µm

Compound	RT#1	RT#2	Resp#1	Resp#2	ng/ml	ng/ml
-----						
System Monitoring Compounds						
1) SA Tetrachlo...	4.488	3.781	72037618	98400149	52.600	53.412
2) SA Decachlor...	10.175	8.781	54425635	73846860	49.884	55.811
Target Compounds						
3) L1 AR-1016-1	5.639	4.859	22961515	35844016	483.262	525.767
4) L1 AR-1016-2	5.660	4.876	35026892	52513324	491.848	515.421
5) L1 AR-1016-3	5.722	5.053	21243235	28197772	486.526	521.155
6) L1 AR-1016-4	5.820	5.095	17827759	22538184	495.965	513.622
7) L1 AR-1016-5	6.112	5.309	16035000	30688361	511.803	562.238
8) L2 AR-1221-1	4.686	3.989	2762462	4312411	154.617	159.454
9) L2 AR-1221-2	4.776	4.077	3961957	5878808	293.381	288.739
10) L2 AR-1221-3	4.850	4.150	13934619	20657596	334.928	336.177
11) L3 AR-1232-1	4.850	4.150	13934619	20657596	426.779	443.160
12) L3 AR-1232-2	5.374	4.876	17283888	52513324	1063.318	1101.837
13) L3 AR-1232-3	5.660	5.053	35026892	28197772	1061.631	1126.603
14) L3 AR-1232-4	5.820	5.137	17827759	26739163	1084.073	1234.707
15) L3 AR-1232-5	5.909	5.309	13803095	30688361	1305.830	1360.092
16) L4 AR-1242-1	5.639	4.859	22961515	35844016	601.272	620.517
17) L4 AR-1242-2	5.660	4.876	35026892	52513324	584.931	607.412
18) L4 AR-1242-3	5.722	5.053	21243235	28197772	580.085	613.707
19) L4 AR-1242-4	5.820	5.137	17827759	26739163	554.759	604.093
20) L4 AR-1242-5	6.550	5.658	5400410	28320788	164.964	512.663 #
21) L5 AR-1248-1	5.639	4.859	22961515	35844016	743.800	798.399
22) L5 AR-1248-2	5.909	5.095	13803095	22538184	345.740	366.257
23) L5 AR-1248-3	6.112	5.137	16035000	26739163	361.070	417.379
24) L5 AR-1248-4	6.510	5.309	5867843	30688361	106.532	407.129 #
25) L5 AR-1248-5	6.550	5.699	5400410	7909075	100.397	106.033
26) L6 AR-1254-1	6.486	5.658	14453859	28320788	269.714	244.081
27) L6 AR-1254-2	6.702	5.807	13245201	20645158	159.027	205.172 #
28) L6 AR-1254-3	7.066	6.222	8266213	37535714	93.582	243.034 #
29) L6 AR-1254-4	7.348	6.437	6461128	4477810	82.133	47.355 #
30) L6 AR-1254-5	7.762	6.851	44186370	62139292	599.708	465.655
31) L7 AR-1260-1	7.229	6.338	28861979	48020777	489.508	492.216
32) L7 AR-1260-2	7.483	6.527	41083869	60198986	428.672	490.070
33) L7 AR-1260-3	7.840	6.678	35113163	54305928	480.537	496.109
34) L7 AR-1260-4	8.064	7.147	31621984	44454919	484.258	497.212
35) L7 AR-1260-5	8.381	7.390	75082418	110.2E6	497.720	490.432
36) L8 AR-1262-1	8.064	6.889	31621984	52489186	363.357	355.397
37) L8 AR-1262-2	8.381	7.147	75082418	44454919	379.151	347.769
38) L8 AR-1262-3	8.703	7.669	45458785	27156283	361.573	238.173 #
39) L8 AR-1262-4	8.766	7.734	29216892	77933378	313.275	423.438 #
40) L8 AR-1262-5	9.429	8.231	23819869	28685313	375.771	339.730
41) L9 AR-1268-1	8.703	7.669	45458785	27156283	203.647	88.349 #

Data Path : Z:\pestpcbsrv\HPCHEM1\ECD\_P\Data\PP070925\  
 Data File : PP073605.D  
 Signal(s) : Signal #1: ECD1A.ch Signal #2: ECD2B.ch  
 Acq On : 08 Jul 2025 14:22  
 Operator : YP\AJ  
 Sample : AR1660CCC500  
 Misc :  
 ALS Vial : 3 Sample Multiplier: 1

**Instrument :**  
 ECD\_P  
**ClientSampleId :**  
 AR1660CCC500

Integration File signal 1: autoint1.e  
 Integration File signal 2: autoint2.e  
 Quant Time: Jul 09 01:39:44 2025  
 Quant Method : Z:\pestpcbsrv\HPCHEM1\ECD\_P\methods\PP070825.M  
 Quant Title : GC EXTRACTABLES  
 QLast Update : Tue Jul 08 08:35:32 2025  
 Response via : Initial Calibration  
 Integrator: ChemStation

Volume Inj. : 2 µl  
 Signal #1 Phase : ZB-MR1 Signal #2 Phase: ZB-MR2  
 Signal #1 Info : 30Mx0.32mmx 0.50µ Signal #2 Info : 30M x 0.32mm x 0.25µm

	Compound	RT#1	RT#2	Resp#1	Resp#2	ng/ml	ng/ml
42)	L9 AR-1268-2	8.766	7.734	29216892	77933378	153.365	293.327 #
43)	L9 AR-1268-3	9.013	7.937	1862932	1703262	11.251	7.551 #
44)	L9 AR-1268-4	9.429	8.231	23819869	28685313	342.516	308.551
45)	L9 AR-1268-5	9.842	8.526	5066982	7735010	10.992	12.546

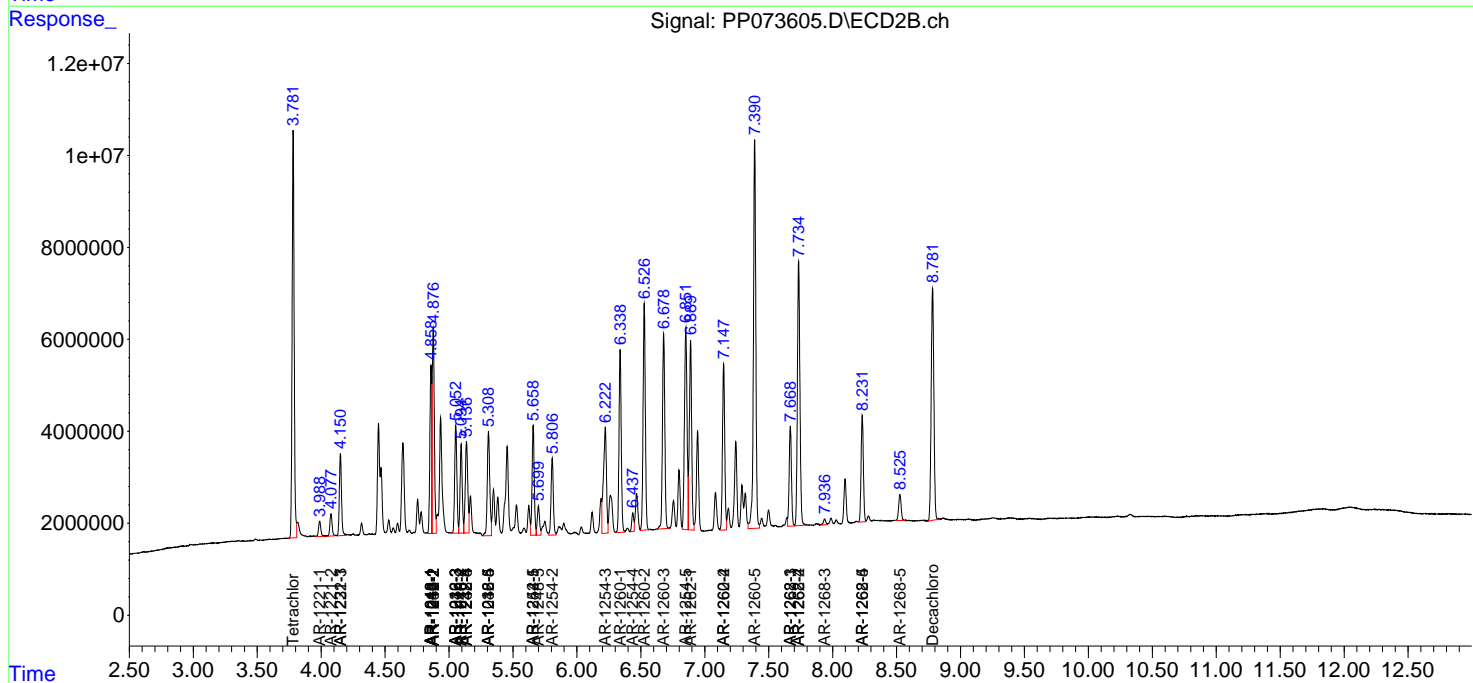
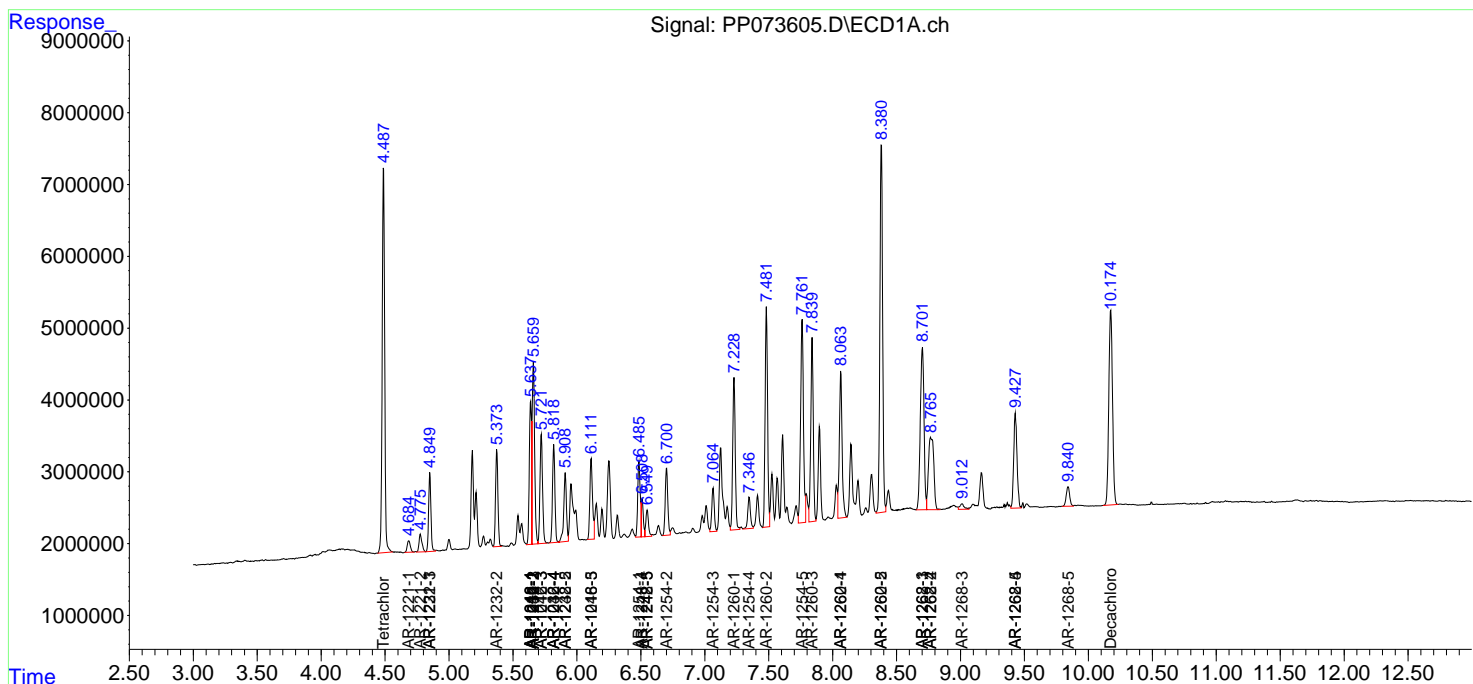
(f)=RT Delta > 1/2 Window (#)=Amounts differ by > 25% (m)=manual int.

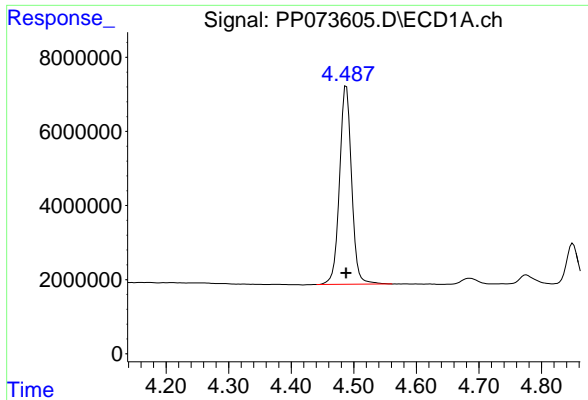
Data Path : Z:\pestpcbsrv\HPCHEM1\ECD\_P\Data\PP070925\  
 Data File : PP073605.D  
 Signal(s) : Signal #1: ECD1A.ch Signal #2: ECD2B.ch  
 Acq On : 08 Jul 2025 14:22  
 Operator : YP\AJ  
 Sample : AR1660CCC500  
 Misc :  
 ALS Vial : 3 Sample Multiplier: 1

Instrument :  
 ECD\_P  
 ClientSampleId :  
 AR1660CCC500

Integration File signal 1: autoint1.e  
 Integration File signal 2: autoint2.e  
 Quant Time: Jul 09 01:39:44 2025  
 Quant Method : Z:\pestpcbsrv\HPCHEM1\ECD\_P\methods\PP070825.M  
 Quant Title : GC EXTRACTABLES  
 QLast Update : Tue Jul 08 08:35:32 2025  
 Response via : Initial Calibration  
 Integrator: ChemStation

Volume Inj. : 2 µl  
 Signal #1 Phase : ZB-MR1 Signal #2 Phase: ZB-MR2  
 Signal #1 Info : 30Mx0.32mmx 0.50µ Signal #2 Info : 30M x 0.32mm x 0.25µm

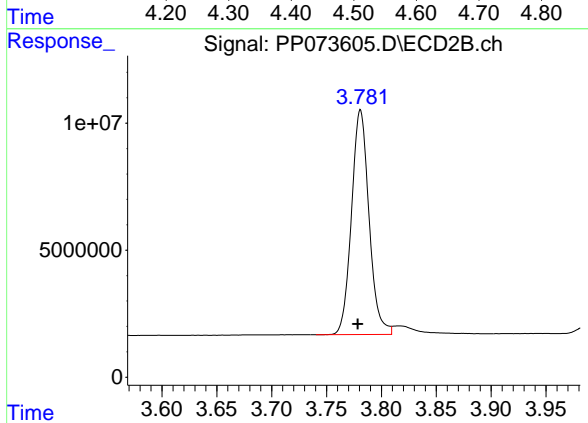




#1 Tetrachloro-m-xylene

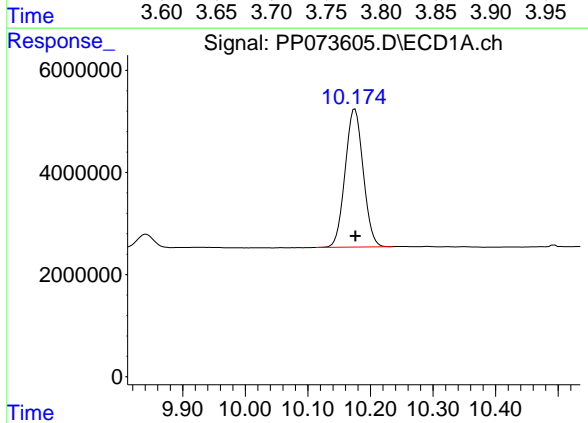
R.T.: 4.488 min  
 Delta R.T.: 0.000 min  
 Response: 72037618  
 Conc: 52.60 ng/ml

Instrument :  
 ECD\_P  
 ClientSampleId :  
 AR1660CCC500



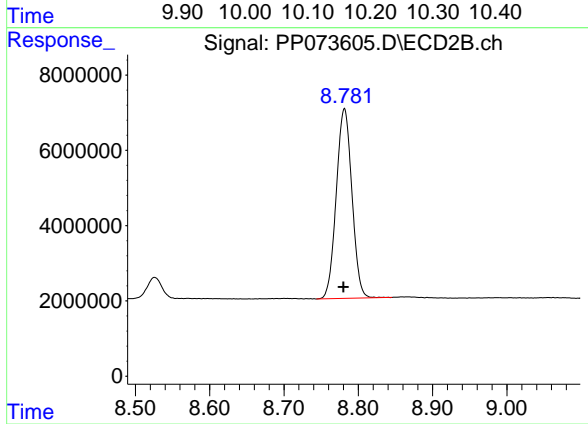
#1 Tetrachloro-m-xylene

R.T.: 3.781 min  
 Delta R.T.: 0.002 min  
 Response: 98400149  
 Conc: 53.41 ng/ml



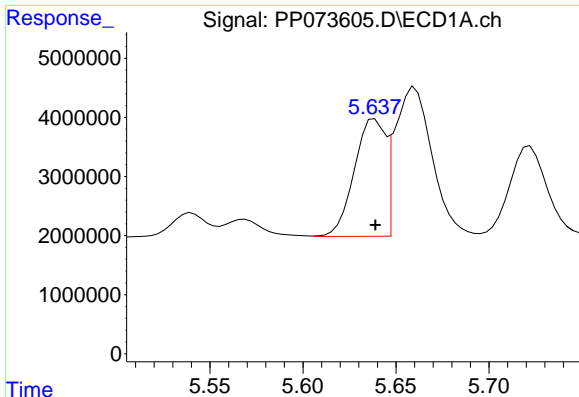
#2 Decachlorobiphenyl

R.T.: 10.175 min  
 Delta R.T.: 0.000 min  
 Response: 54425635  
 Conc: 49.88 ng/ml



#2 Decachlorobiphenyl

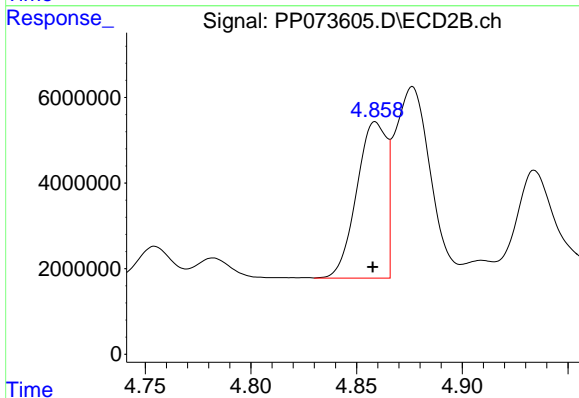
R.T.: 8.781 min  
 Delta R.T.: 0.001 min  
 Response: 73846860  
 Conc: 55.81 ng/ml



#3 AR-1016-1

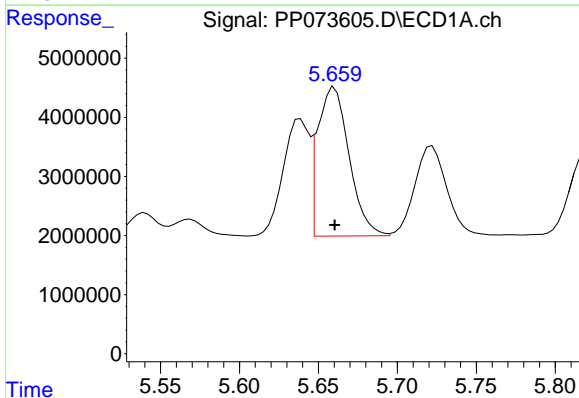
R.T.: 5.639 min  
 Delta R.T.: 0.000 min  
 Response: 22961515  
 Conc: 483.26 ng/ml

Instrument :  
 ECD\_P  
 ClientSampleId :  
 AR1660CCC500



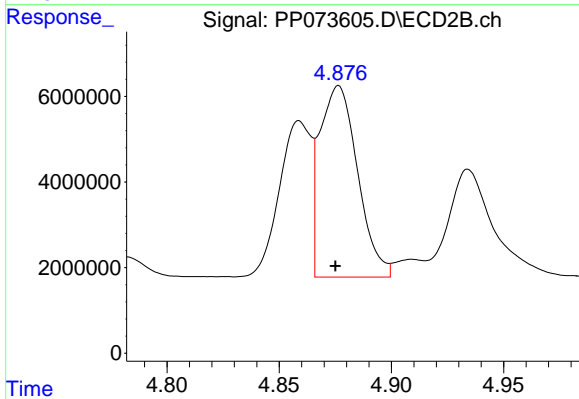
#3 AR-1016-1

R.T.: 4.859 min  
 Delta R.T.: 0.001 min  
 Response: 35844016  
 Conc: 525.77 ng/ml



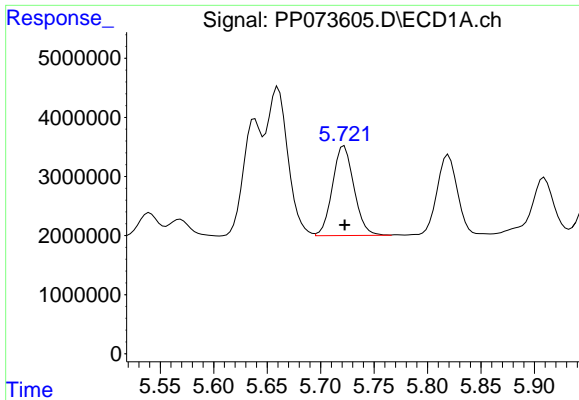
#4 AR-1016-2

R.T.: 5.660 min  
 Delta R.T.: 0.000 min  
 Response: 35026892  
 Conc: 491.85 ng/ml



#4 AR-1016-2

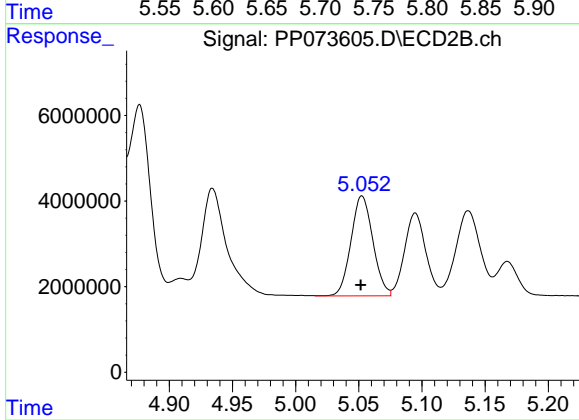
R.T.: 4.876 min  
 Delta R.T.: 0.001 min  
 Response: 52513324  
 Conc: 515.42 ng/ml



#5 AR-1016-3

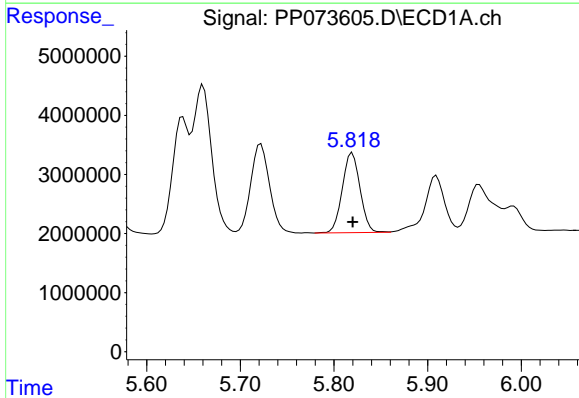
R.T.: 5.722 min  
Delta R.T.: 0.000 min  
Response: 21243235  
Conc: 486.53 ng/ml

Instrument :  
ECD\_P  
ClientSampleId :  
AR1660CCC500



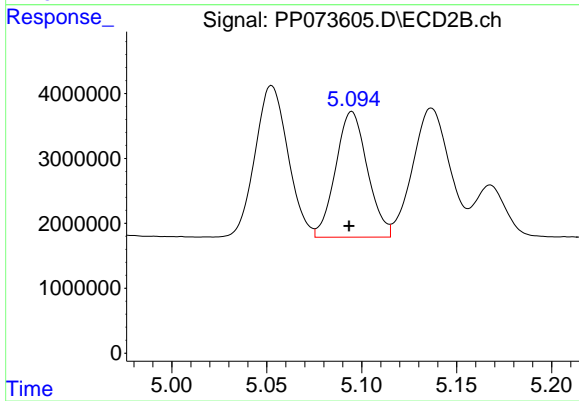
#5 AR-1016-3

R.T.: 5.053 min  
Delta R.T.: 0.001 min  
Response: 28197772  
Conc: 521.15 ng/ml



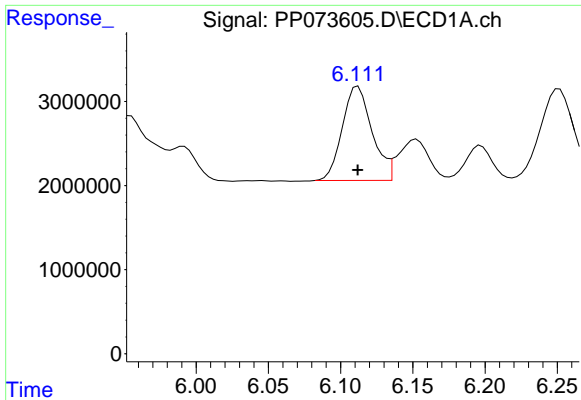
#6 AR-1016-4

R.T.: 5.820 min  
Delta R.T.: 0.000 min  
Response: 17827759  
Conc: 495.97 ng/ml



#6 AR-1016-4

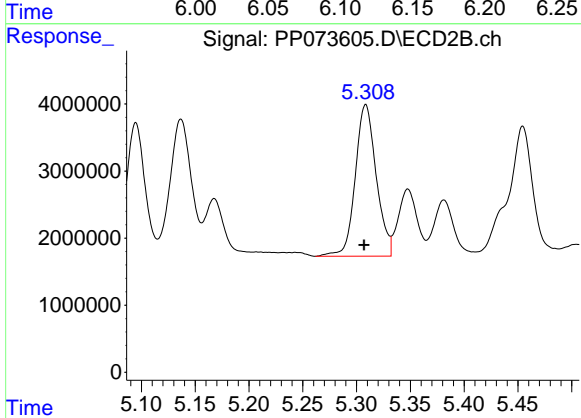
R.T.: 5.095 min  
Delta R.T.: 0.001 min  
Response: 22538184  
Conc: 513.62 ng/ml



#7 AR-1016-5

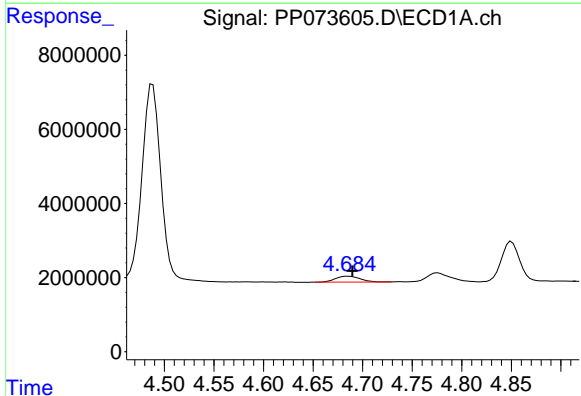
R.T.: 6.112 min  
 Delta R.T.: 0.000 min  
 Response: 16035000  
 Conc: 511.80 ng/ml

Instrument :  
 ECD\_P  
 ClientSampleId :  
 AR1660CCC500



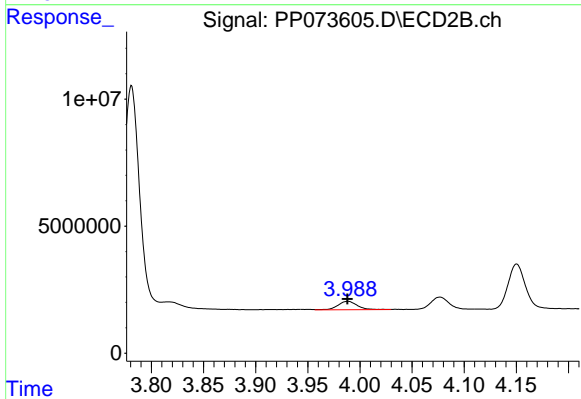
#7 AR-1016-5

R.T.: 5.309 min  
 Delta R.T.: 0.002 min  
 Response: 30688361  
 Conc: 562.24 ng/ml



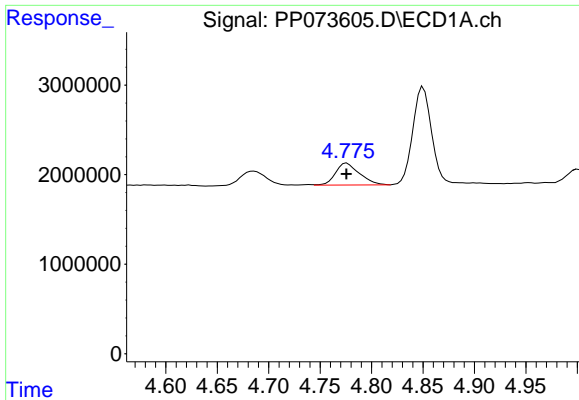
#8 AR-1221-1

R.T.: 4.686 min  
 Delta R.T.: -0.004 min  
 Response: 2762462  
 Conc: 154.62 ng/ml



#8 AR-1221-1

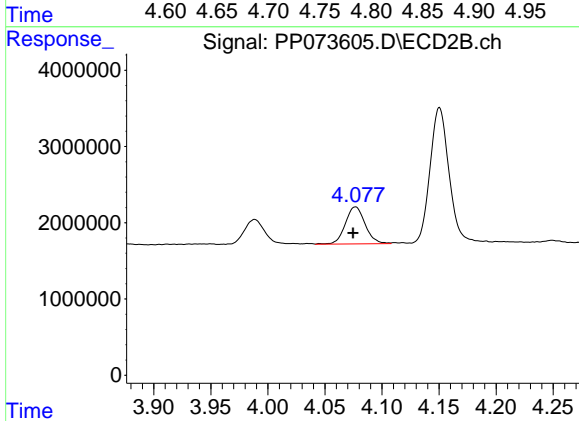
R.T.: 3.989 min  
 Delta R.T.: 0.000 min  
 Response: 4312411  
 Conc: 159.45 ng/ml



#9 AR-1221-2

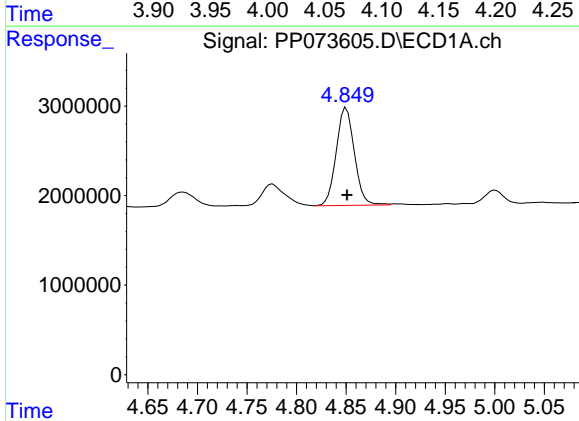
R.T.: 4.776 min  
 Delta R.T.: 0.000 min  
 Response: 3961957  
 Conc: 293.38 ng/ml

Instrument :  
 ECD\_P  
 ClientSampleId :  
 AR1660CCC500



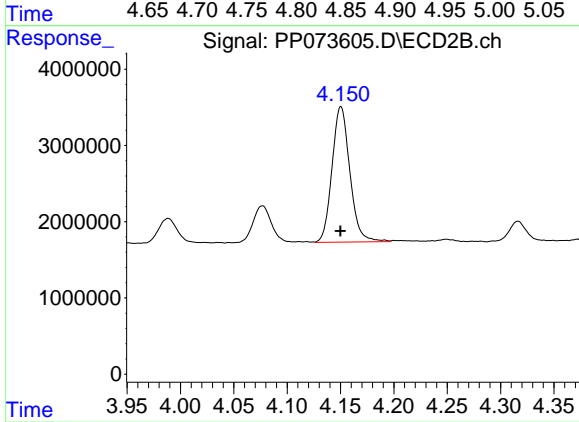
#9 AR-1221-2

R.T.: 4.077 min  
 Delta R.T.: 0.002 min  
 Response: 5878808  
 Conc: 288.74 ng/ml



#10 AR-1221-3

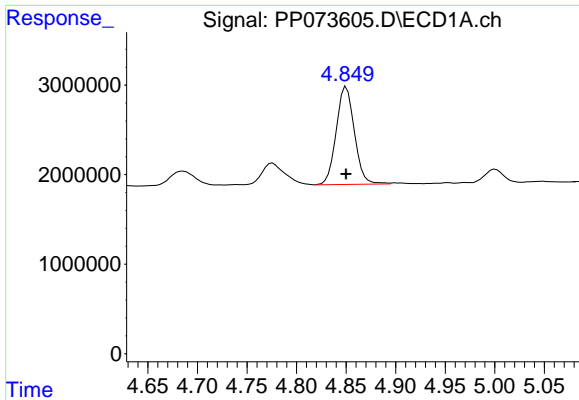
R.T.: 4.850 min  
 Delta R.T.: 0.000 min  
 Response: 13934619  
 Conc: 334.93 ng/ml



#10 AR-1221-3

R.T.: 4.150 min  
 Delta R.T.: 0.000 min  
 Response: 20657596  
 Conc: 336.18 ng/ml

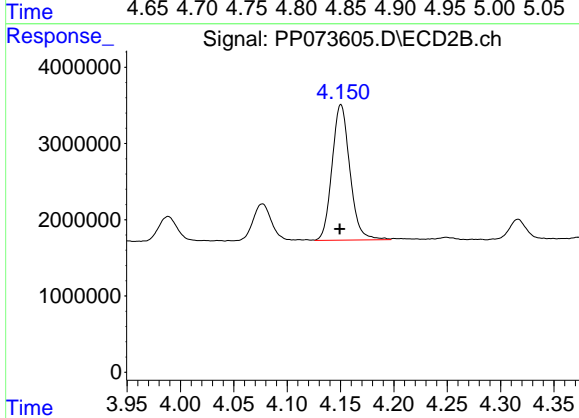




#11 AR-1232-1

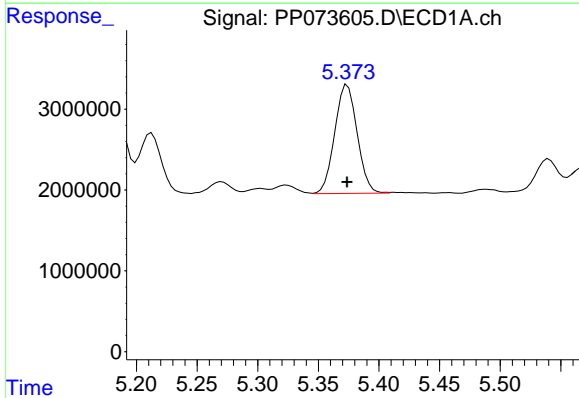
R.T.: 4.850 min  
 Delta R.T.: 0.000 min  
 Response: 13934619  
 Conc: 426.78 ng/ml

Instrument :  
 ECD\_P  
 ClientSampleId :  
 AR1660CCC500



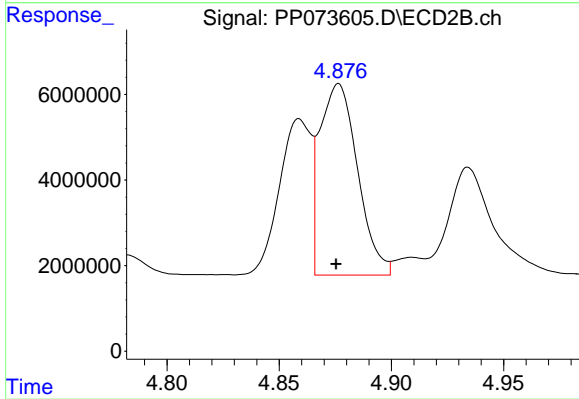
#11 AR-1232-1

R.T.: 4.150 min  
 Delta R.T.: 0.001 min  
 Response: 20657596  
 Conc: 443.16 ng/ml



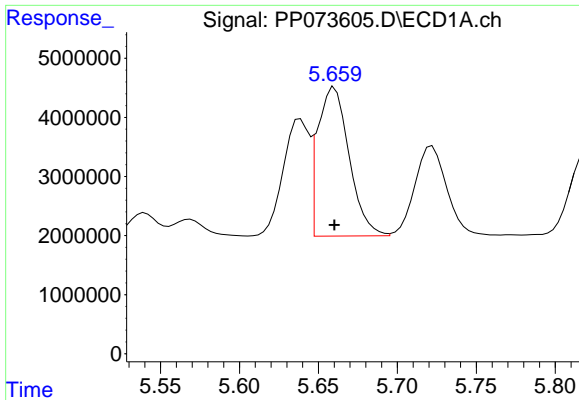
#12 AR-1232-2

R.T.: 5.374 min  
 Delta R.T.: 0.000 min  
 Response: 17283888  
 Conc: 1063.32 ng/ml



#12 AR-1232-2

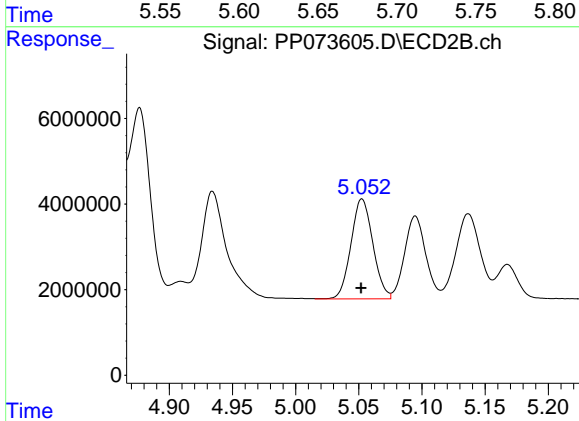
R.T.: 4.876 min  
 Delta R.T.: 0.001 min  
 Response: 52513324  
 Conc: 1101.84 ng/ml



#13 AR-1232-3

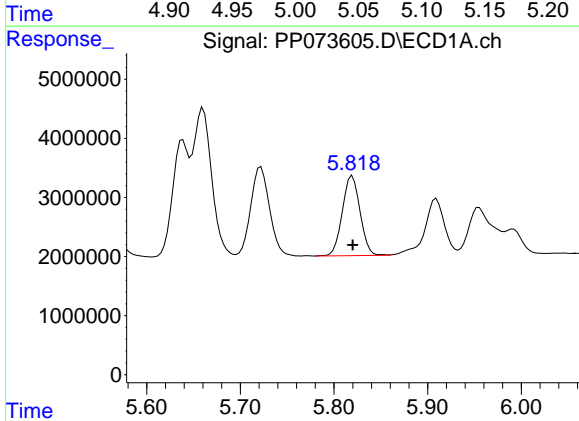
R.T.: 5.660 min  
 Delta R.T.: 0.000 min  
 Response: 35026892  
 Conc: 1061.63 ng/ml

Instrument :  
 ECD\_P  
 ClientSampleId :  
 AR1660CCC500



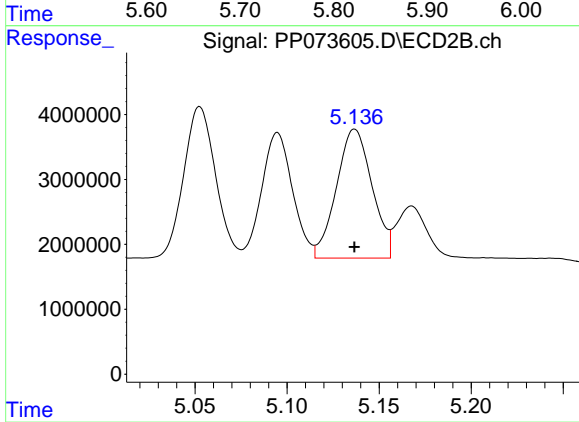
#13 AR-1232-3

R.T.: 5.053 min  
 Delta R.T.: 0.000 min  
 Response: 28197772  
 Conc: 1126.60 ng/ml



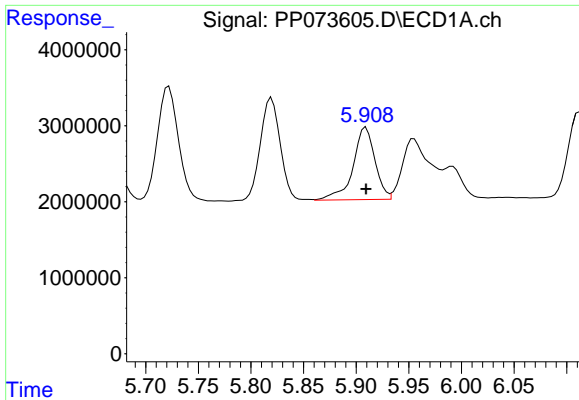
#14 AR-1232-4

R.T.: 5.820 min  
 Delta R.T.: 0.000 min  
 Response: 17827759  
 Conc: 1084.07 ng/ml



#14 AR-1232-4

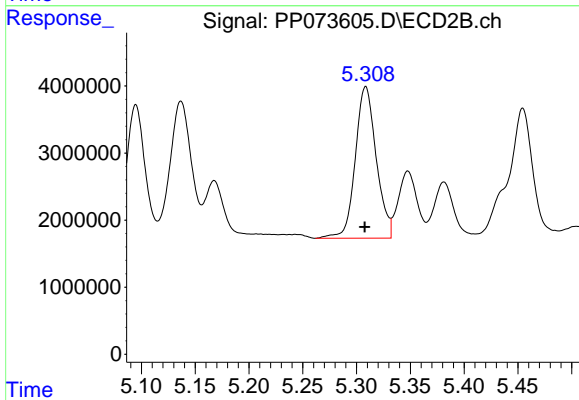
R.T.: 5.137 min  
 Delta R.T.: 0.000 min  
 Response: 26739163  
 Conc: 1234.71 ng/ml



#15 AR-1232-5

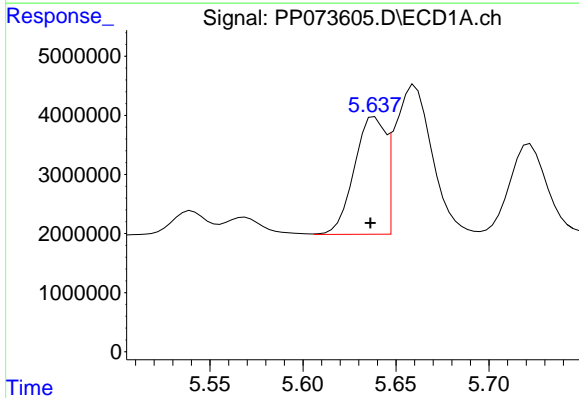
R.T.: 5.909 min  
 Delta R.T.: 0.000 min  
 Response: 13803095  
 Conc: 1305.83 ng/ml

Instrument :  
 ECD\_P  
 ClientSampleId :  
 AR1660CCC500



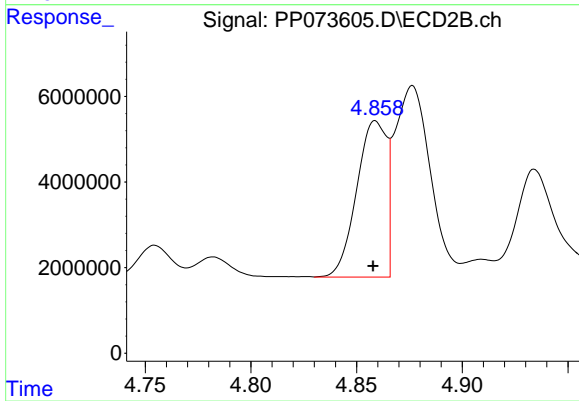
#15 AR-1232-5

R.T.: 5.309 min  
 Delta R.T.: 0.000 min  
 Response: 30688361  
 Conc: 1360.09 ng/ml



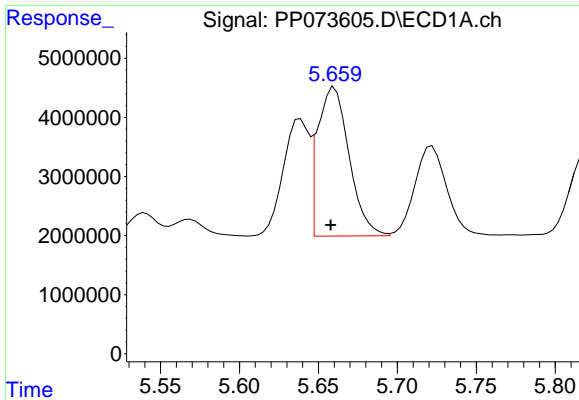
#16 AR-1242-1

R.T.: 5.639 min  
 Delta R.T.: 0.002 min  
 Response: 22961515  
 Conc: 601.27 ng/ml



#16 AR-1242-1

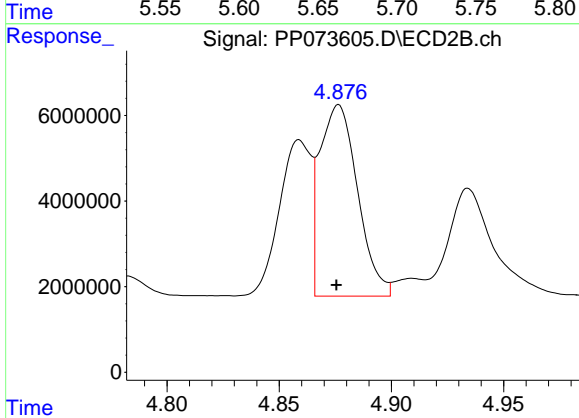
R.T.: 4.859 min  
 Delta R.T.: 0.001 min  
 Response: 35844016  
 Conc: 620.52 ng/ml



#17 AR-1242-2

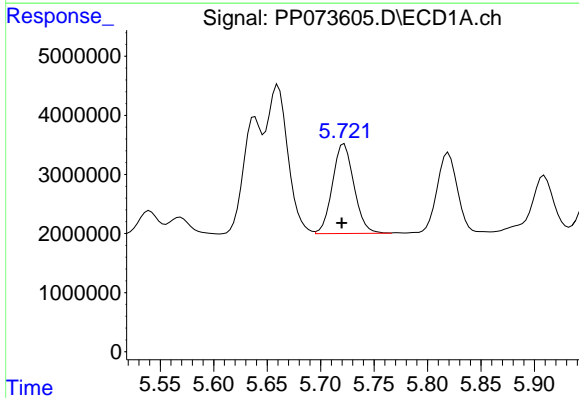
R.T.: 5.660 min  
 Delta R.T.: 0.002 min  
 Response: 35026892  
 Conc: 584.93 ng/ml

Instrument :  
 ECD\_P  
 ClientSampleId :  
 AR1660CCC500



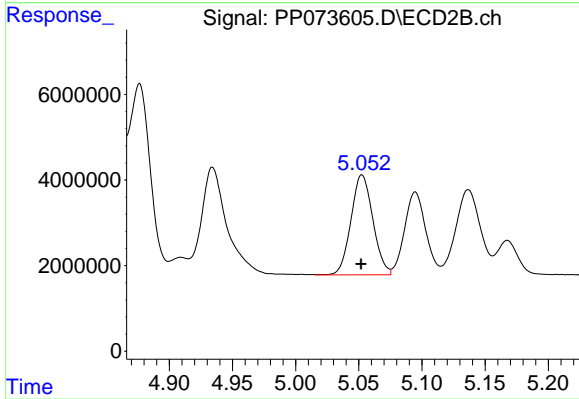
#17 AR-1242-2

R.T.: 4.876 min  
 Delta R.T.: 0.001 min  
 Response: 52513324  
 Conc: 607.41 ng/ml



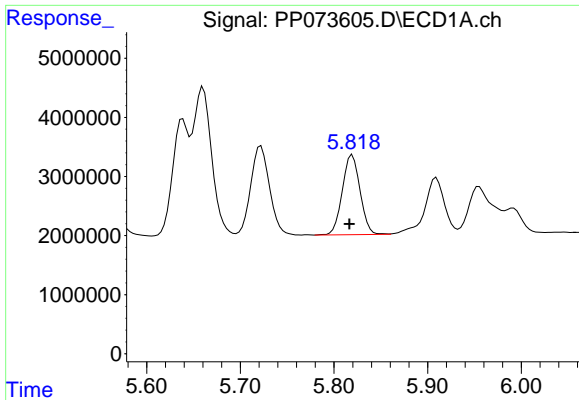
#18 AR-1242-3

R.T.: 5.722 min  
 Delta R.T.: 0.002 min  
 Response: 21243235  
 Conc: 580.08 ng/ml



#18 AR-1242-3

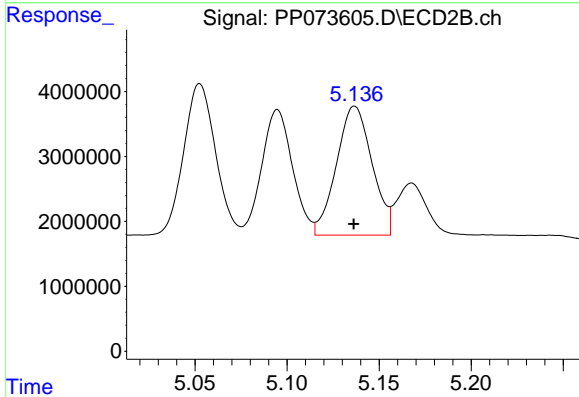
R.T.: 5.053 min  
 Delta R.T.: 0.000 min  
 Response: 28197772  
 Conc: 613.71 ng/ml



#19 AR-1242-4

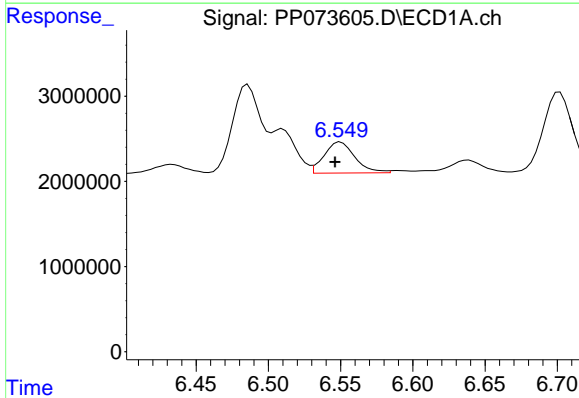
R.T.: 5.820 min  
 Delta R.T.: 0.003 min  
 Response: 17827759  
 Conc: 554.76 ng/ml

Instrument :  
 ECD\_P  
 ClientSampleId :  
 AR1660CCC500



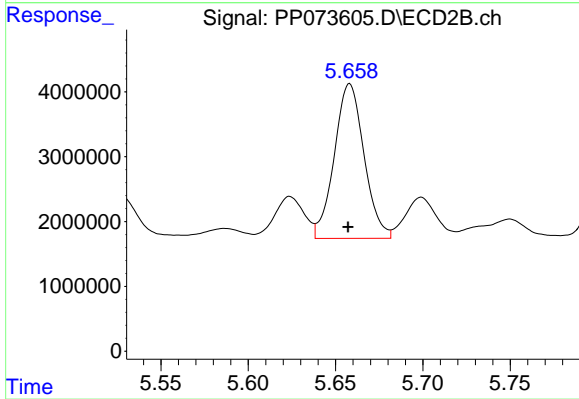
#19 AR-1242-4

R.T.: 5.137 min  
 Delta R.T.: 0.000 min  
 Response: 26739163  
 Conc: 604.09 ng/ml



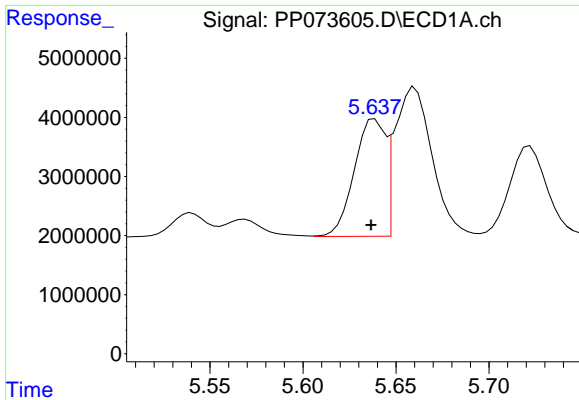
#20 AR-1242-5

R.T.: 6.550 min  
 Delta R.T.: 0.004 min  
 Response: 5400410  
 Conc: 164.96 ng/ml



#20 AR-1242-5

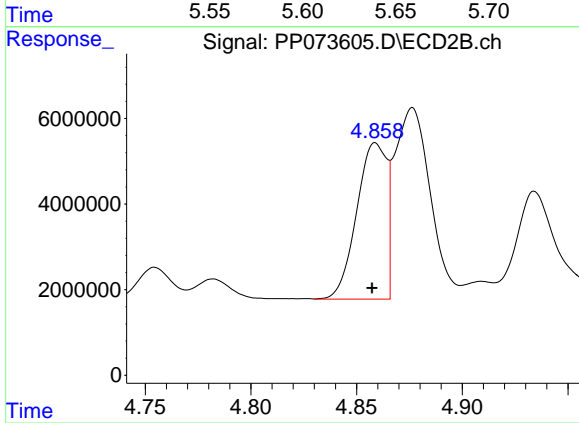
R.T.: 5.658 min  
 Delta R.T.: 0.000 min  
 Response: 28320788  
 Conc: 512.66 ng/ml



#21 AR-1248-1

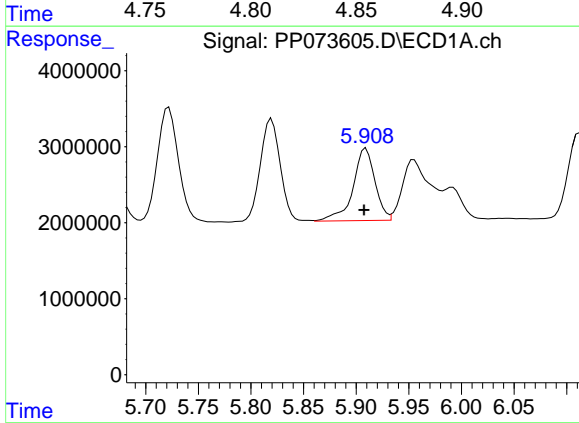
R.T.: 5.639 min  
 Delta R.T.: 0.002 min  
 Response: 22961515  
 Conc: 743.80 ng/ml

Instrument :  
 ECD\_P  
 ClientSampleId :  
 AR1660CCC500



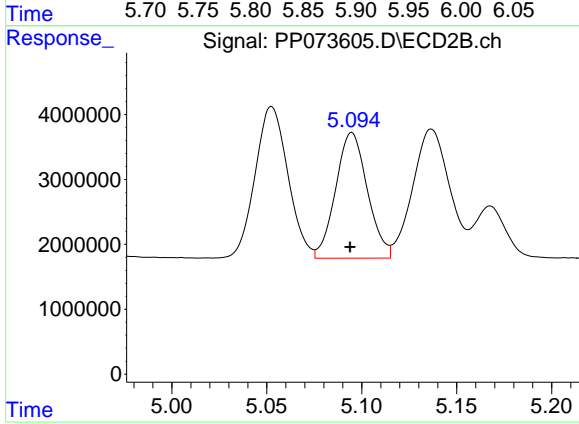
#21 AR-1248-1

R.T.: 4.859 min  
 Delta R.T.: 0.002 min  
 Response: 35844016  
 Conc: 798.40 ng/ml



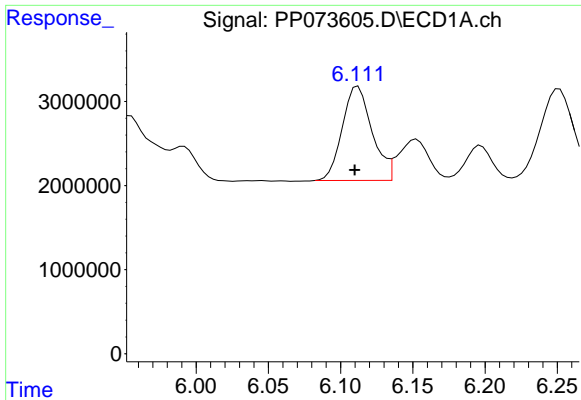
#22 AR-1248-2

R.T.: 5.909 min  
 Delta R.T.: 0.002 min  
 Response: 13803095  
 Conc: 345.74 ng/ml



#22 AR-1248-2

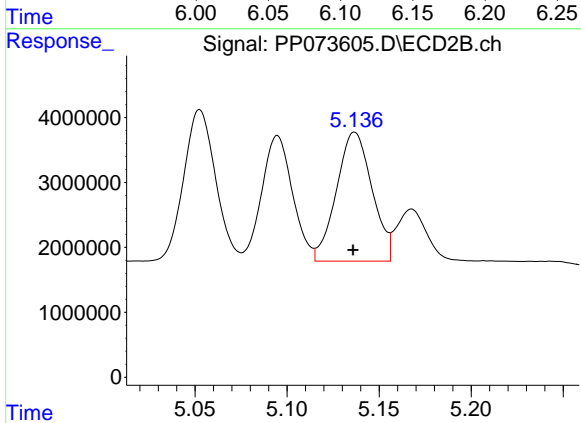
R.T.: 5.095 min  
 Delta R.T.: 0.000 min  
 Response: 22538184  
 Conc: 366.26 ng/ml



#23 AR-1248-3

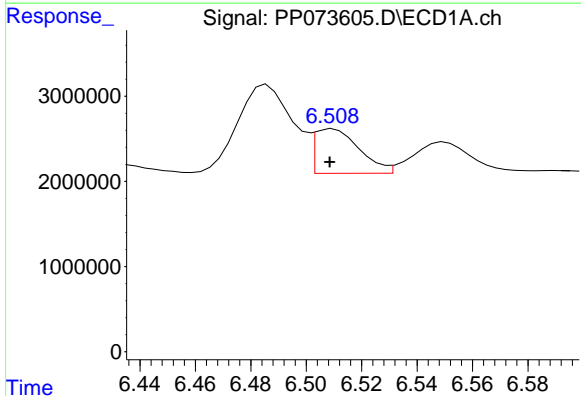
R.T.: 6.112 min  
 Delta R.T.: 0.002 min  
 Response: 16035000  
 Conc: 361.07 ng/ml

Instrument :  
 ECD\_P  
 ClientSampleId :  
 AR1660CCC500



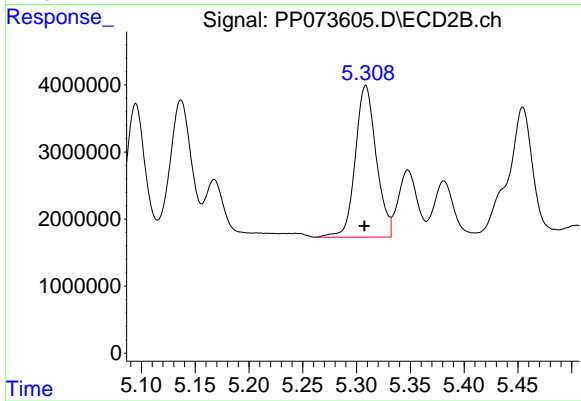
#23 AR-1248-3

R.T.: 5.137 min  
 Delta R.T.: 0.000 min  
 Response: 26739163  
 Conc: 417.38 ng/ml



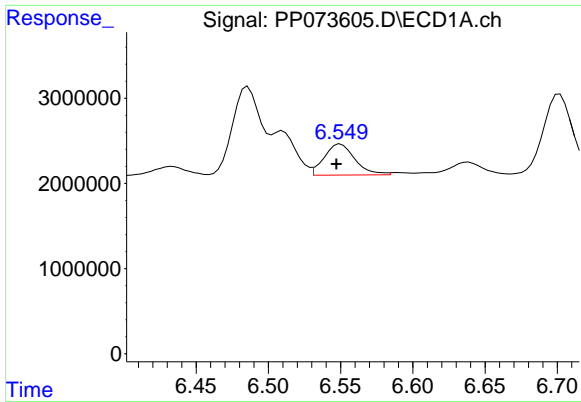
#24 AR-1248-4

R.T.: 6.510 min  
 Delta R.T.: 0.001 min  
 Response: 5867843  
 Conc: 106.53 ng/ml



#24 AR-1248-4

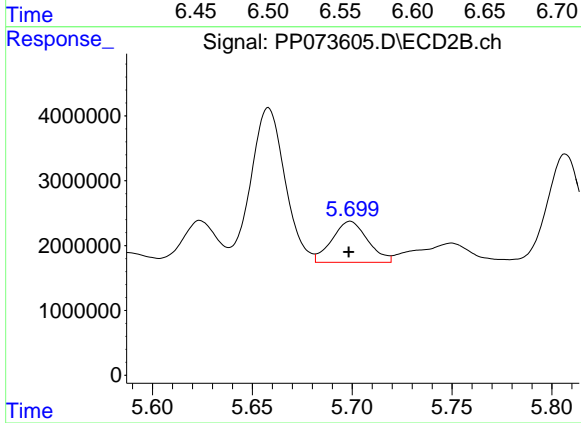
R.T.: 5.309 min  
 Delta R.T.: 0.001 min  
 Response: 30688361  
 Conc: 407.13 ng/ml



#25 AR-1248-5

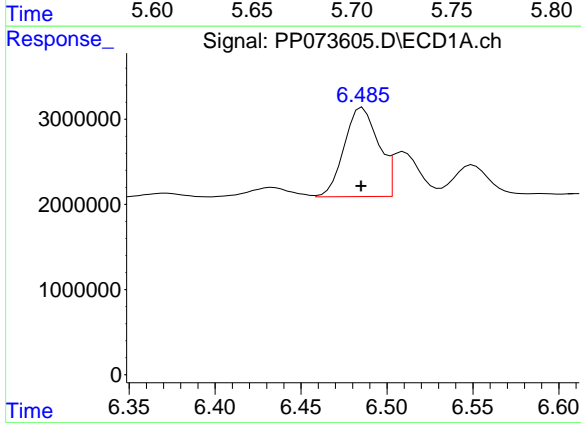
R.T.: 6.550 min  
 Delta R.T.: 0.003 min  
 Response: 5400410  
 Conc: 100.40 ng/ml

Instrument :  
 ECD\_P  
 ClientSampleId :  
 AR1660CCC500



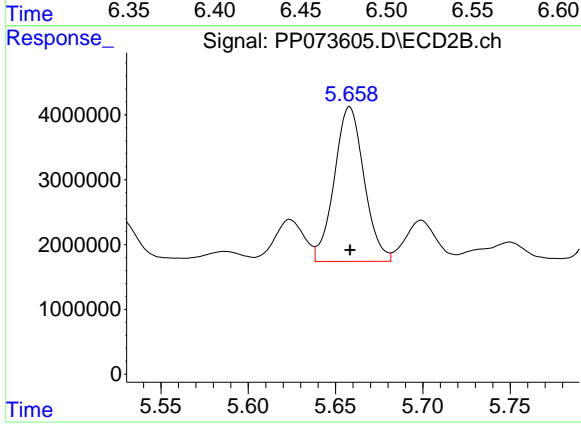
#25 AR-1248-5

R.T.: 5.699 min  
 Delta R.T.: 0.000 min  
 Response: 7909075  
 Conc: 106.03 ng/ml



#26 AR-1254-1

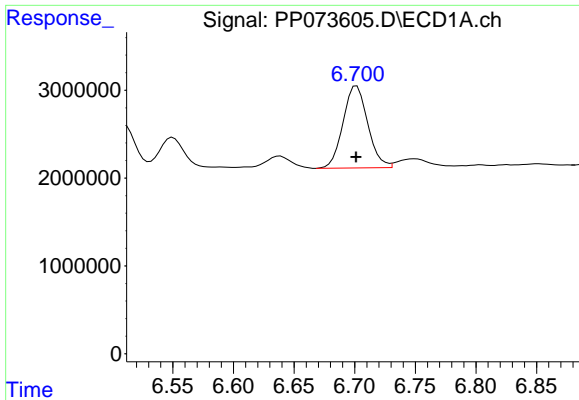
R.T.: 6.486 min  
 Delta R.T.: 0.000 min  
 Response: 14453859  
 Conc: 269.71 ng/ml



#26 AR-1254-1

R.T.: 5.658 min  
 Delta R.T.: 0.000 min  
 Response: 28320788  
 Conc: 244.08 ng/ml

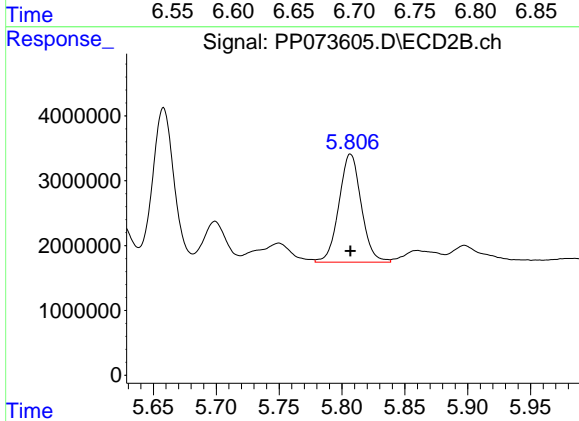




#27 AR-1254-2

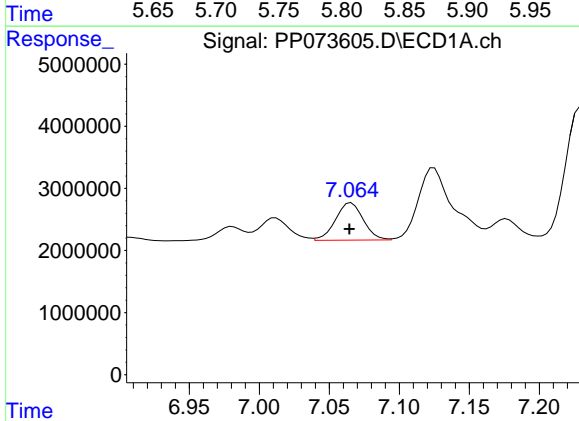
R.T.: 6.702 min  
 Delta R.T.: 0.000 min  
 Response: 13245201  
 Conc: 159.03 ng/ml

Instrument :  
 ECD\_P  
 ClientSampleId :  
 AR1660CCC500



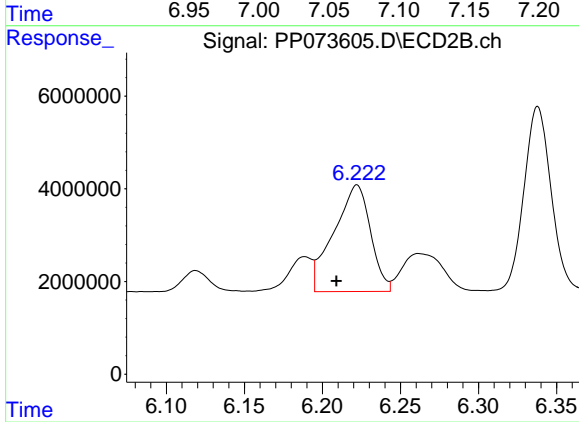
#27 AR-1254-2

R.T.: 5.807 min  
 Delta R.T.: 0.000 min  
 Response: 20645158  
 Conc: 205.17 ng/ml



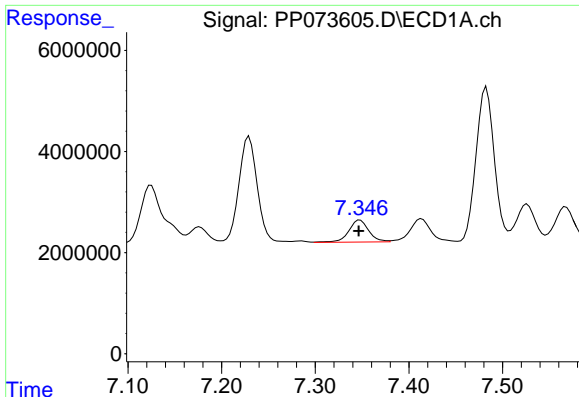
#28 AR-1254-3

R.T.: 7.066 min  
 Delta R.T.: 0.001 min  
 Response: 8266213  
 Conc: 93.58 ng/ml



#28 AR-1254-3

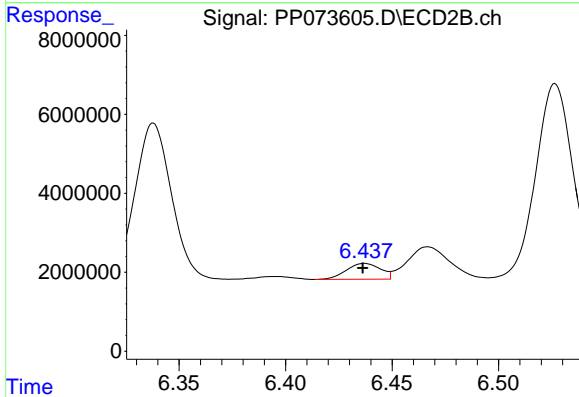
R.T.: 6.222 min  
 Delta R.T.: 0.013 min  
 Response: 37535714  
 Conc: 243.03 ng/ml



#29 AR-1254-4

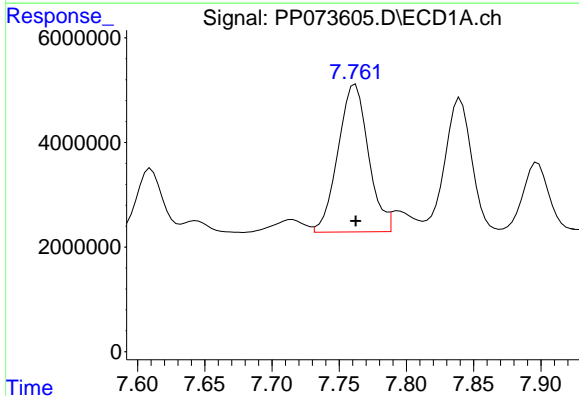
R.T.: 7.348 min  
 Delta R.T.: 0.002 min  
 Response: 6461128  
 Conc: 82.13 ng/ml

Instrument :  
 ECD\_P  
 ClientSampleId :  
 AR1660CCC500



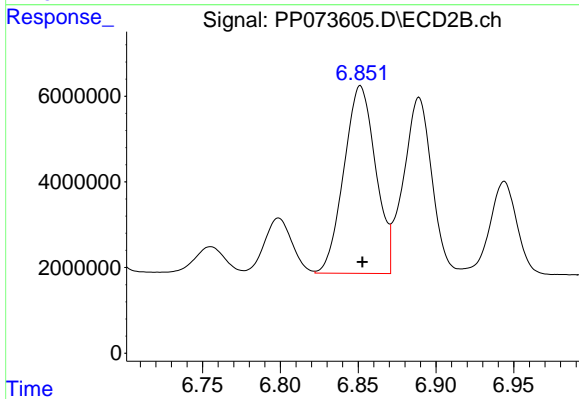
#29 AR-1254-4

R.T.: 6.437 min  
 Delta R.T.: 0.000 min  
 Response: 4477810  
 Conc: 47.35 ng/ml



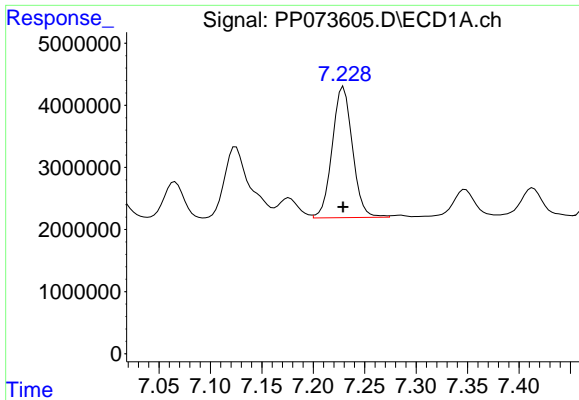
#30 AR-1254-5

R.T.: 7.762 min  
 Delta R.T.: 0.000 min  
 Response: 44186370  
 Conc: 599.71 ng/ml



#30 AR-1254-5

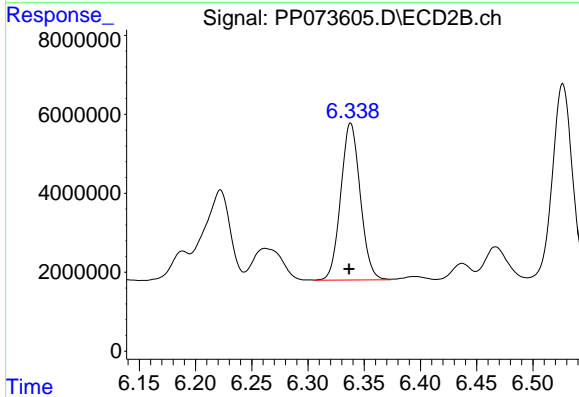
R.T.: 6.851 min  
 Delta R.T.: -0.001 min  
 Response: 62139292  
 Conc: 465.66 ng/ml



#31 AR-1260-1

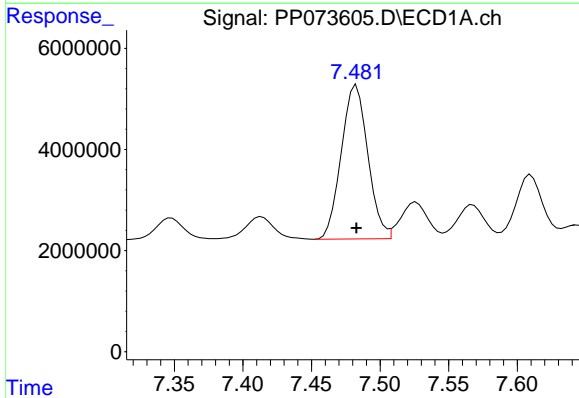
R.T.: 7.229 min  
 Delta R.T.: 0.000 min  
 Response: 28861979  
 Conc: 489.51 ng/ml

Instrument :  
 ECD\_P  
 ClientSampleId :  
 AR1660CCC500



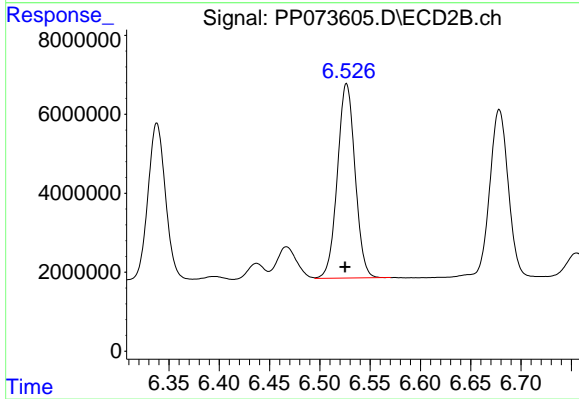
#31 AR-1260-1

R.T.: 6.338 min  
 Delta R.T.: 0.001 min  
 Response: 48020777  
 Conc: 492.22 ng/ml



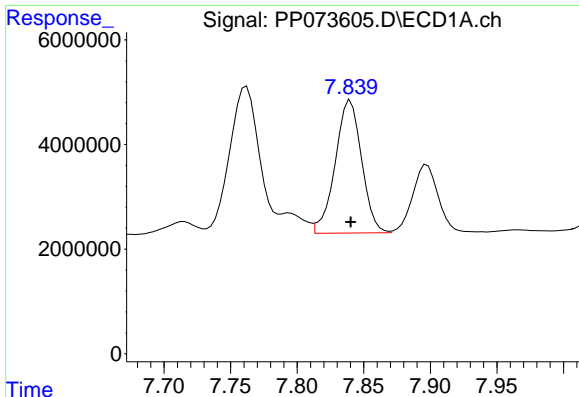
#32 AR-1260-2

R.T.: 7.483 min  
 Delta R.T.: 0.000 min  
 Response: 41083869  
 Conc: 428.67 ng/ml



#32 AR-1260-2

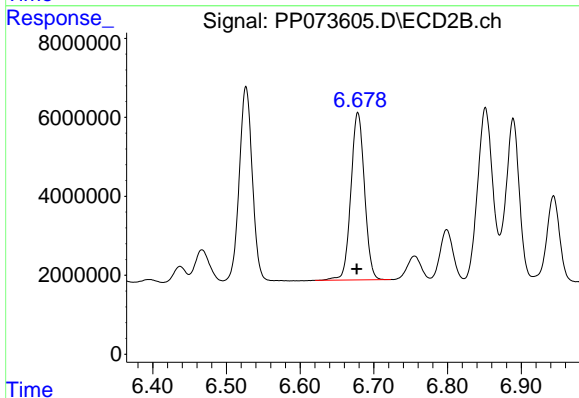
R.T.: 6.527 min  
 Delta R.T.: 0.001 min  
 Response: 60198986  
 Conc: 490.07 ng/ml



#33 AR-1260-3

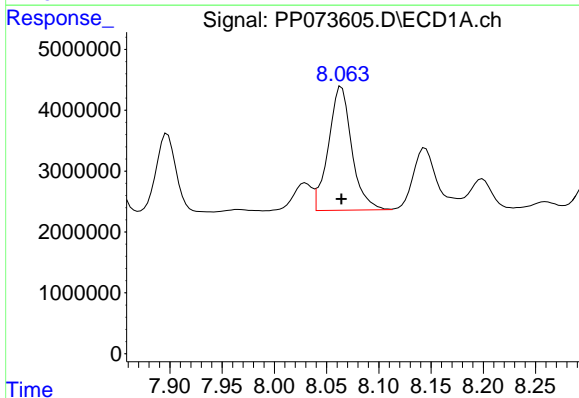
R.T.: 7.840 min  
 Delta R.T.: 0.000 min  
 Response: 35113163  
 Conc: 480.54 ng/ml

Instrument :  
 ECD\_P  
 ClientSampleId :  
 AR1660CCC500



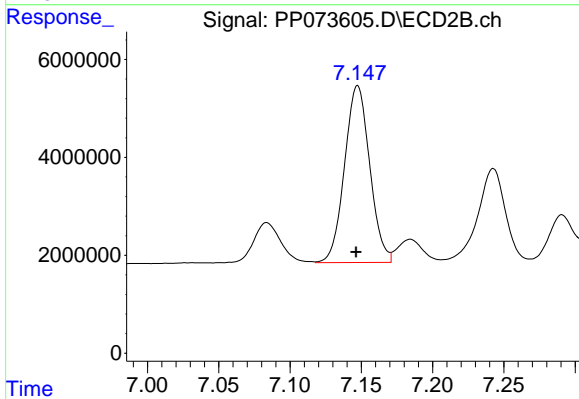
#33 AR-1260-3

R.T.: 6.678 min  
 Delta R.T.: 0.001 min  
 Response: 54305928  
 Conc: 496.11 ng/ml



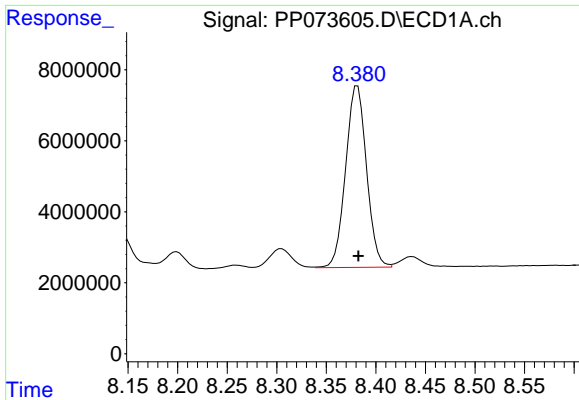
#34 AR-1260-4

R.T.: 8.064 min  
 Delta R.T.: 0.000 min  
 Response: 31621984  
 Conc: 484.26 ng/ml



#34 AR-1260-4

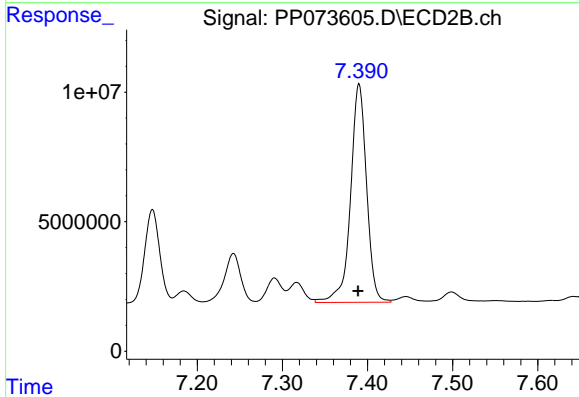
R.T.: 7.147 min  
 Delta R.T.: 0.001 min  
 Response: 44454919  
 Conc: 497.21 ng/ml



#35 AR-1260-5

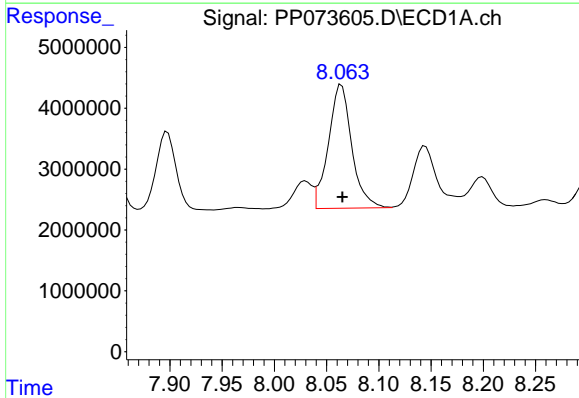
R.T.: 8.381 min  
 Delta R.T.: -0.001 min  
 Response: 75082418  
 Conc: 497.72 ng/ml

Instrument :  
 ECD\_P  
 ClientSampleId :  
 AR1660CCC500



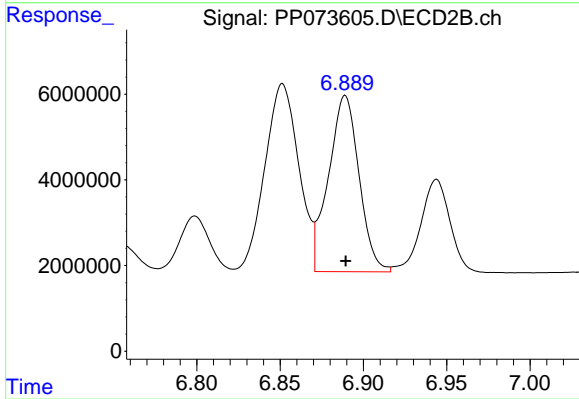
#35 AR-1260-5

R.T.: 7.390 min  
 Delta R.T.: 0.001 min  
 Response: 110218133  
 Conc: 490.43 ng/ml



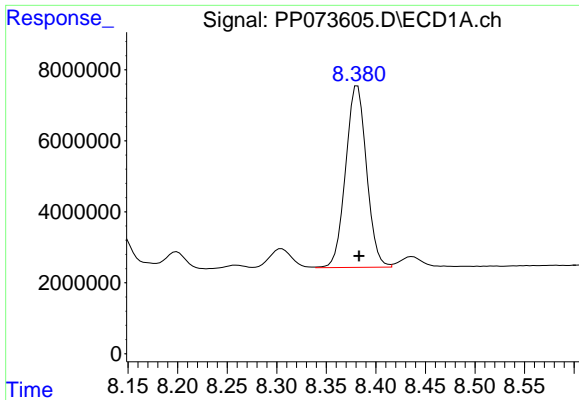
#36 AR-1262-1

R.T.: 8.064 min  
 Delta R.T.: 0.000 min  
 Response: 31621984  
 Conc: 363.36 ng/ml



#36 AR-1262-1

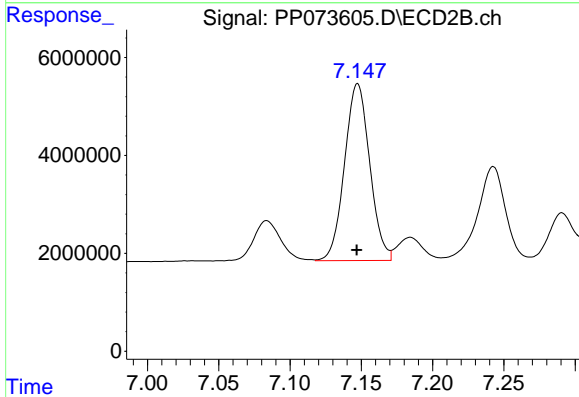
R.T.: 6.889 min  
 Delta R.T.: 0.000 min  
 Response: 52489186  
 Conc: 355.40 ng/ml



#37 AR-1262-2

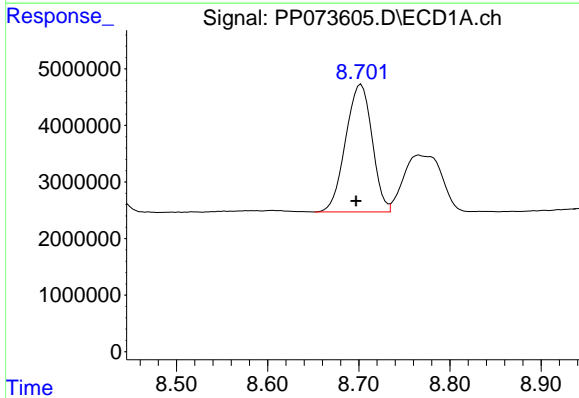
R.T.: 8.381 min  
 Delta R.T.: -0.002 min  
 Response: 75082418  
 Conc: 379.15 ng/ml

Instrument :  
 ECD\_P  
 ClientSampleId :  
 AR1660CCC500



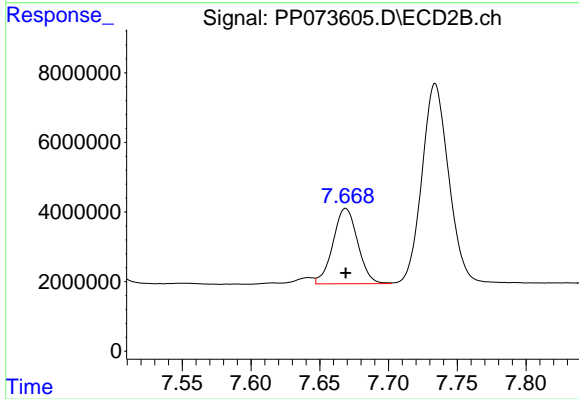
#37 AR-1262-2

R.T.: 7.147 min  
 Delta R.T.: 0.000 min  
 Response: 44454919  
 Conc: 347.77 ng/ml



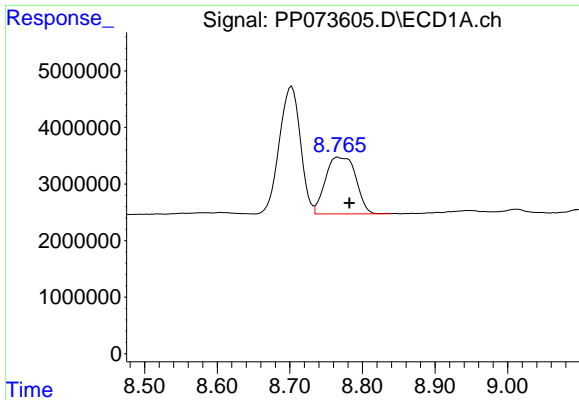
#38 AR-1262-3

R.T.: 8.703 min  
 Delta R.T.: 0.005 min  
 Response: 45458785  
 Conc: 361.57 ng/ml



#38 AR-1262-3

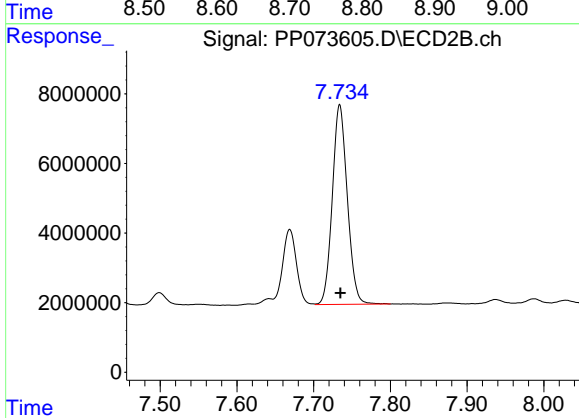
R.T.: 7.669 min  
 Delta R.T.: 0.000 min  
 Response: 27156283  
 Conc: 238.17 ng/ml



#39 AR-1262-4

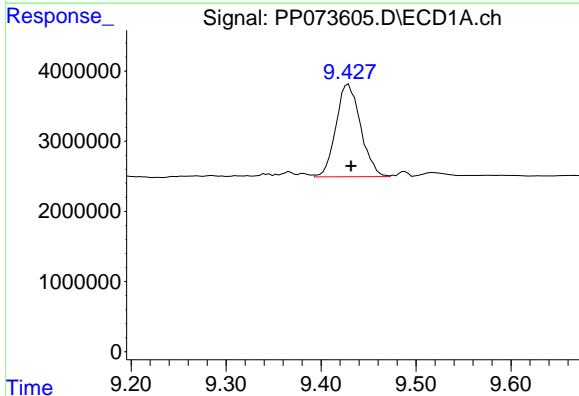
R.T.: 8.766 min  
 Delta R.T.: -0.016 min  
 Response: 29216892  
 Conc: 313.27 ng/ml

Instrument :  
 ECD\_P  
 ClientSampleId :  
 AR1660CCC500



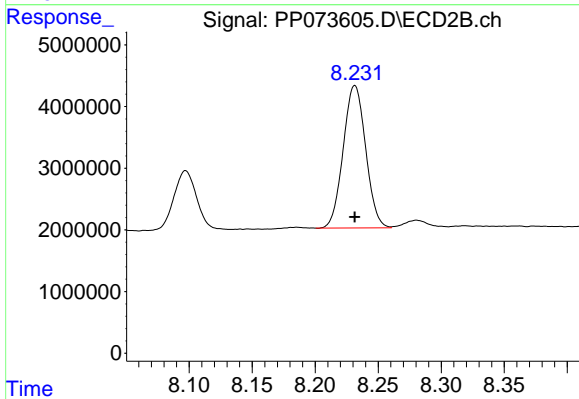
#39 AR-1262-4

R.T.: 7.734 min  
 Delta R.T.: 0.000 min  
 Response: 77933378  
 Conc: 423.44 ng/ml



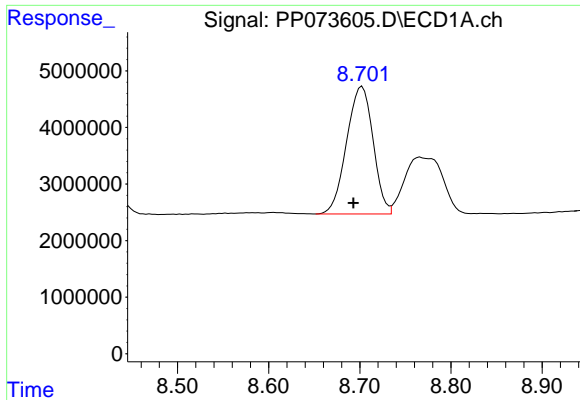
#40 AR-1262-5

R.T.: 9.429 min  
 Delta R.T.: -0.003 min  
 Response: 23819869  
 Conc: 375.77 ng/ml



#40 AR-1262-5

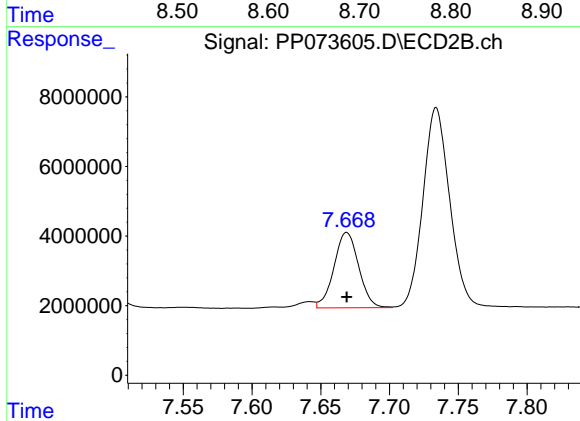
R.T.: 8.231 min  
 Delta R.T.: 0.000 min  
 Response: 28685313  
 Conc: 339.73 ng/ml



#41 AR-1268-1

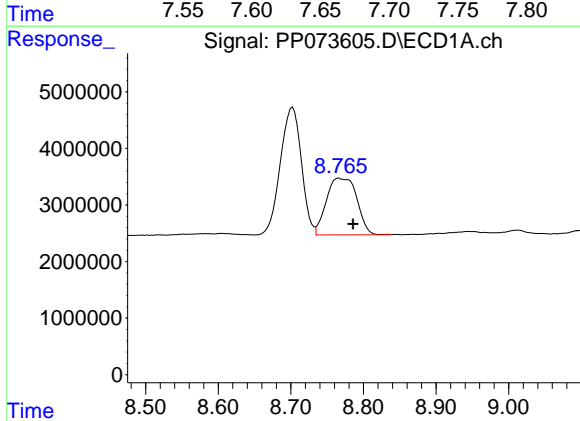
R.T.: 8.703 min  
 Delta R.T.: 0.010 min  
 Response: 45458785  
 Conc: 203.65 ng/ml

Instrument :  
 ECD\_P  
 ClientSampleId :  
 AR1660CCC500



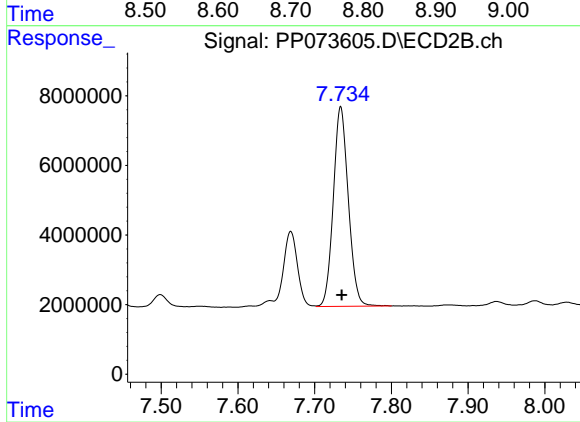
#41 AR-1268-1

R.T.: 7.669 min  
 Delta R.T.: 0.000 min  
 Response: 27156283  
 Conc: 88.35 ng/ml



#42 AR-1268-2

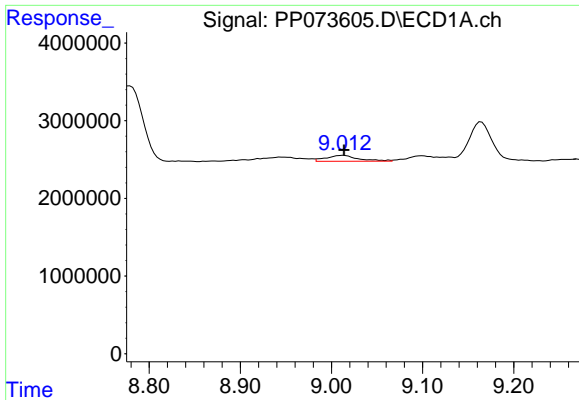
R.T.: 8.766 min  
 Delta R.T.: -0.020 min  
 Response: 29216892  
 Conc: 153.37 ng/ml



#42 AR-1268-2

R.T.: 7.734 min  
 Delta R.T.: -0.001 min  
 Response: 77933378  
 Conc: 293.33 ng/ml

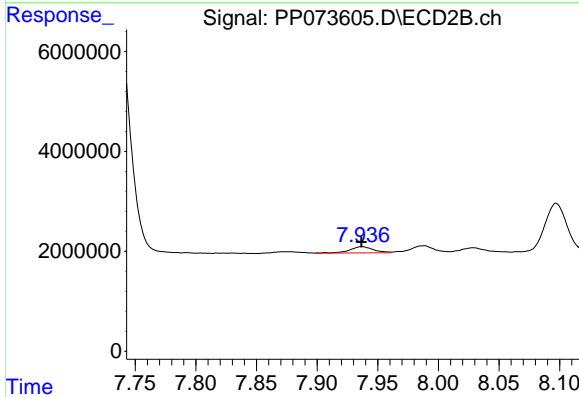




#43 AR-1268-3

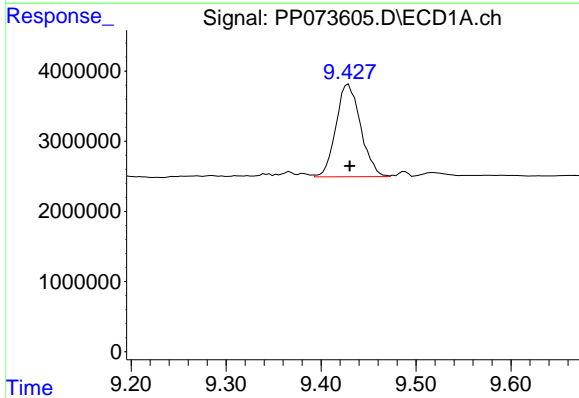
R.T.: 9.013 min  
 Delta R.T.: 0.000 min  
 Response: 1862932  
 Conc: 11.25 ng/ml

Instrument :  
 ECD\_P  
 ClientSampleId :  
 AR1660CCC500



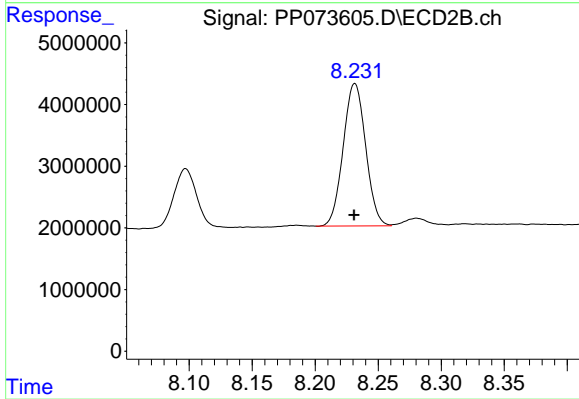
#43 AR-1268-3

R.T.: 7.937 min  
 Delta R.T.: 0.000 min  
 Response: 1703262  
 Conc: 7.55 ng/ml



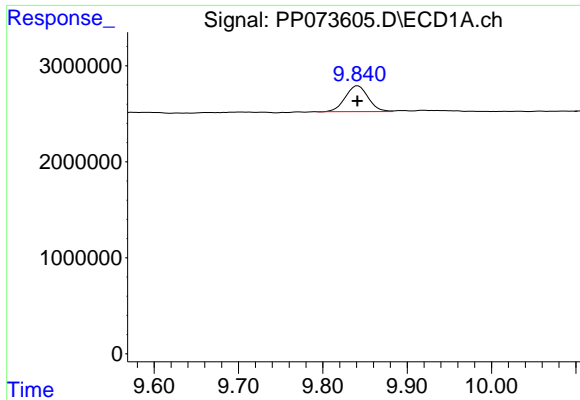
#44 AR-1268-4

R.T.: 9.429 min  
 Delta R.T.: -0.002 min  
 Response: 23819869  
 Conc: 342.52 ng/ml



#44 AR-1268-4

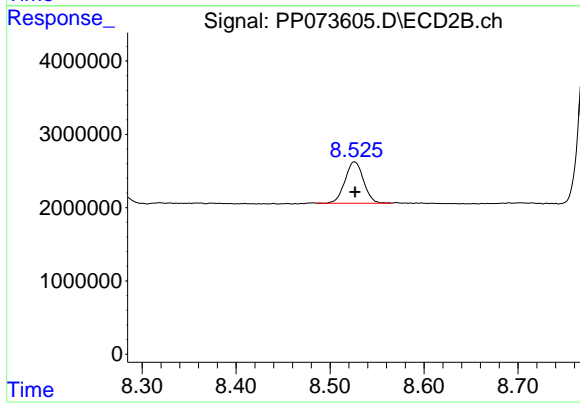
R.T.: 8.231 min  
 Delta R.T.: 0.000 min  
 Response: 28685313  
 Conc: 308.55 ng/ml



#45 AR-1268-5

R.T.: 9.842 min  
Delta R.T.: 0.000 min  
Response: 5066982  
Conc: 10.99 ng/ml

Instrument :  
ECD\_P  
ClientSampleId :  
AR1660CCC500



#45 AR-1268-5

R.T.: 8.526 min  
Delta R.T.: 0.000 min  
Response: 7735010  
Conc: 12.55 ng/ml