

Data Path : Z:\pestpcbsrv\HPCHEM1\ECD_P\Data\PP070925\
 Data File : PP073606.D
 Signal(s) : Signal #1: ECD1A.ch Signal #2: ECD2B.ch
 Acq On : 08 Jul 2025 14:39
 Operator : YP\AJ
 Sample : AR1242CCC500
 Misc :
 ALS Vial : 4 Sample Multiplier: 1

Instrument :
 ECD_P
 ClientSampleId :
 AR1242CCC500

Integration File signal 1: autoint1.e
 Integration File signal 2: autoint2.e
 Quant Time: Jul 09 01:40:03 2025
 Quant Method : Z:\pestpcbsrv\HPCHEM1\ECD_P\methods\PP070825.M
 Quant Title : GC EXTRACTABLES
 QLast Update : Tue Jul 08 08:35:32 2025
 Response via : Initial Calibration
 Integrator: ChemStation

Volume Inj. : 2 µl
 Signal #1 Phase : ZB-MR1 Signal #2 Phase: ZB-MR2
 Signal #1 Info : 30Mx0.32mmx 0.50µ Signal #2 Info : 30M x 0.32mm x 0.25µm

Compound	RT#1	RT#2	Resp#1	Resp#2	ng/ml	ng/ml
System Monitoring Compounds						
1) SA Tetrachlo...	4.490	3.781	70655605	94730205	51.591	51.420
2) SA Decachlor...	10.180	8.782	54941300	73317957	50.356	55.412
Target Compounds						
3) L1 AR-1016-1	5.641	4.859	19551766	30431872	411.499	446.381
4) L1 AR-1016-2	5.662	4.877	30106693	45017376	422.758	441.848
5) L1 AR-1016-3	5.725	5.053	18099589	24003884	414.528	443.643
6) L1 AR-1016-4	5.822	5.095	15133204	18149278	421.003	413.604
7) L1 AR-1016-5	6.115	5.309	13408769	27189942	427.979	498.144
8) L2 AR-1221-1	4.688	3.988	2272495	3487588	127.194	128.955
9) L2 AR-1221-2	4.778	4.077	3298489	5111974	244.252	251.075
10) L2 AR-1221-3	4.852	4.151	11872217	17374736	285.357	282.752
11) L3 AR-1232-1	4.852	4.151	11872217	17374736	363.613	372.734
12) L3 AR-1232-2	5.377	4.877	14839290	45017376	912.924	944.556
13) L3 AR-1232-3	5.662	5.053	30106693	24003884	912.505	959.042
14) L3 AR-1232-4	5.822	5.137	15133204	23109122	920.223	1067.086
15) L3 AR-1232-5	5.912	5.309	11131453	27189942	1053.082	1205.044
16) L4 AR-1242-1	5.641	4.859	19551766	30431872	511.984	526.824
17) L4 AR-1242-2	5.662	4.877	30106693	45017376	502.767	520.708
18) L4 AR-1242-3	5.725	5.053	18099589	24003884	494.242	522.429
19) L4 AR-1242-4	5.822	5.137	15133204	23109122	470.911	522.083
20) L4 AR-1242-5	6.552	5.658	15957868	29864436	487.459	540.607
21) L5 AR-1248-1	5.641	4.859	19551766	30431872	633.347	677.847
22) L5 AR-1248-2	5.912	5.095	11131453	18149278	278.821	294.935
23) L5 AR-1248-3	6.115	5.137	13408769	23109122	301.934	360.716
24) L5 AR-1248-4	6.514	5.309	15374653	27189942	279.131	360.717 #
25) L5 AR-1248-5	6.552	5.699	15957868	25830980	296.666	346.302
26) L6 AR-1254-1	6.487	5.658	10637453	29864436	198.499	257.385 #
27) L6 AR-1254-2	6.708	5.806	13364701	8471173	160.462	84.187 #
28) L6 AR-1254-3	7.068	6.208	6953076	9477502	78.716	61.364
29) L6 AR-1254-4	7.351	6.438	6570314	6397106	83.521	67.652
30) L6 AR-1254-5	7.768	6.852	1196348	1845126	16.237	13.827
31) L7 AR-1260-1	7.239	6.326	1499684	2617446	25.435	26.829
32) L7 AR-1260-2	7.492	6.513	1570239	2839736	16.384	23.118 #
33) L7 AR-1260-3	7.834	6.676	301190	941284	4.122	8.599 #
34) L7 AR-1260-4	8.054	7.150	625592	544859	9.580	6.094 #
35) L7 AR-1260-5	8.397	7.392	1282125	583408	8.499	2.596 #
36) L8 AR-1262-1	8.054	6.872	625592	837053	7.188	5.668
37) L8 AR-1262-2	8.397	7.150	1282125	544859	6.474	4.262 #
38) L8 AR-1262-3	8.714	7.671	912652	271463	7.259	2.381 #
39) L8 AR-1262-4	8.763	7.735	533136	232440	5.716	1.263 #
40) L8 AR-1262-5	9.409	8.267f	121647	28177	1.919	0.334 #
41) L9 AR-1268-1	8.714	7.671	912652	271463	4.089	0.883 #

Data Path : Z:\pestpcbsrv\HPCHEM1\ECD_P\Data\PP070925\
 Data File : PP073606.D
 Signal(s) : Signal #1: ECD1A.ch Signal #2: ECD2B.ch
 Acq On : 08 Jul 2025 14:39
 Operator : YP\AJ
 Sample : AR1242CCC500
 Misc :
 ALS Vial : 4 Sample Multiplier: 1

Instrument :
 ECD_P
 ClientSampleId :
 AR1242CCC500

Integration File signal 1: autoint1.e
 Integration File signal 2: autoint2.e
 Quant Time: Jul 09 01:40:03 2025
 Quant Method : Z:\pestpcbsrv\HPCHEM1\ECD_P\methods\PP070825.M
 Quant Title : GC EXTRACTABLES
 QLast Update : Tue Jul 08 08:35:32 2025
 Response via : Initial Calibration
 Integrator: ChemStation

Volume Inj. : 2 µl
 Signal #1 Phase : ZB-MR1 Signal #2 Phase: ZB-MR2
 Signal #1 Info : 30Mx0.32mmx 0.50µ Signal #2 Info : 30M x 0.32mm x 0.25µm

	Compound	RT#1	RT#2	Resp#1	Resp#2	ng/ml	ng/ml
42)	L9 AR-1268-2	8.763	7.735	533136	232440	2.799	0.875 #
43)	L9 AR-1268-3	9.018	7.938	838140	349350	5.062	1.549 #
44)	L9 AR-1268-4	9.409	8.267f	121647	28177	1.749	0.303 #
45)	L9 AR-1268-5	9.849	8.524	289817	1276103	0.629	2.070 #

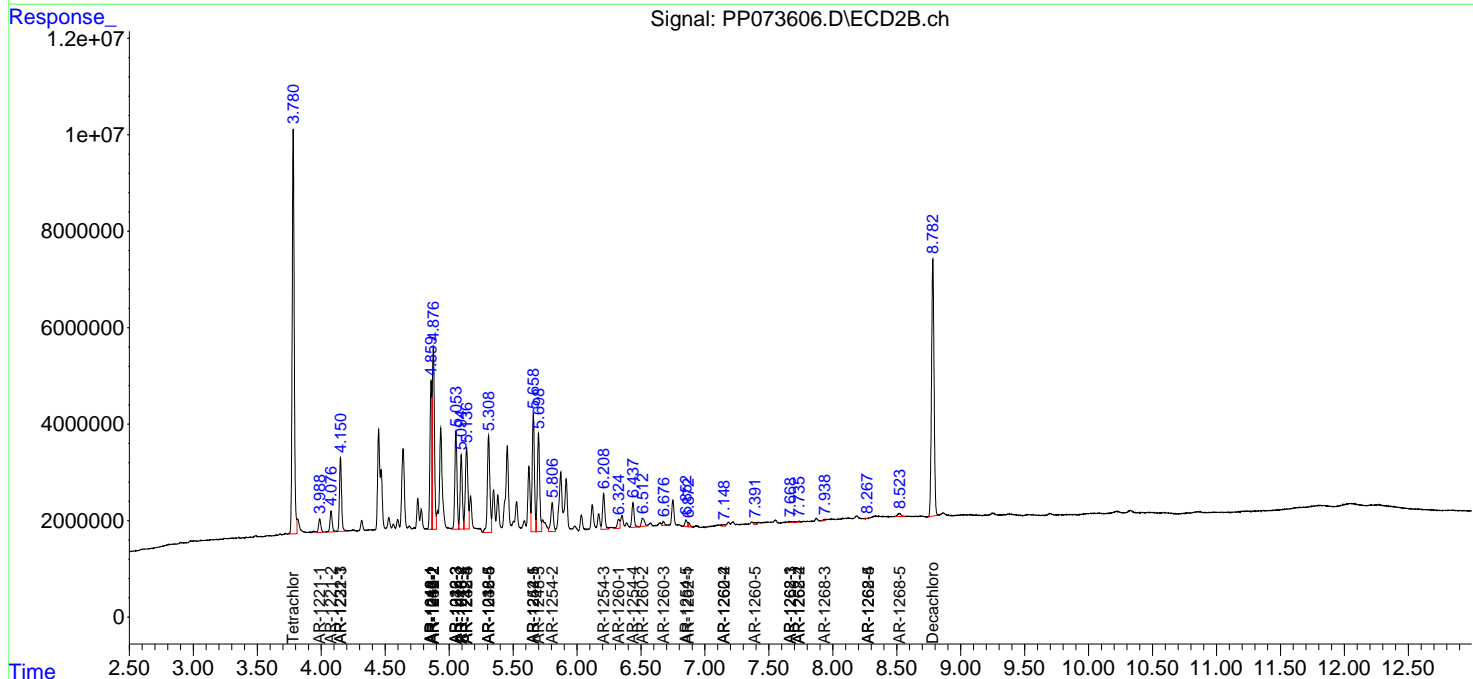
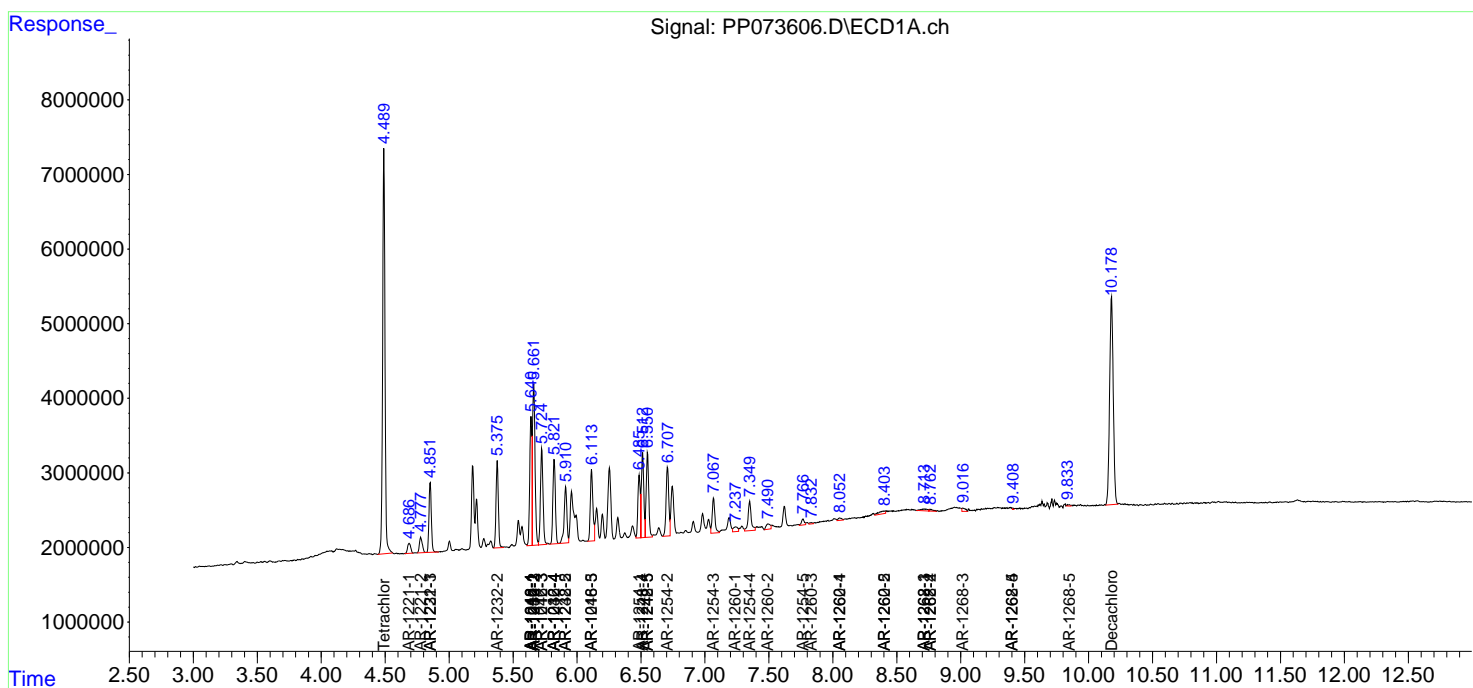
(f)=RT Delta > 1/2 Window (#)=Amounts differ by > 25% (m)=manual int.

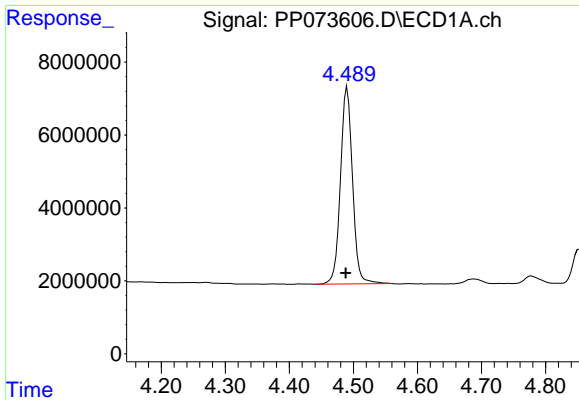
Data Path : Z:\pestpcbsrv\HPCHEM1\ECD_P\Data\PP070925\
 Data File : PP073606.D
 Signal(s) : Signal #1: ECD1A.ch Signal #2: ECD2B.ch
 Acq On : 08 Jul 2025 14:39
 Operator : YP\AJ
 Sample : AR1242CCC500
 Misc :
 ALS Vial : 4 Sample Multiplier: 1

Instrument :
 ECD_P
 ClientSampleId :
 AR1242CCC500

Integration File signal 1: autoint1.e
 Integration File signal 2: autoint2.e
 Quant Time: Jul 09 01:40:03 2025
 Quant Method : Z:\pestpcbsrv\HPCHEM1\ECD_P\methods\PP070825.M
 Quant Title : GC EXTRACTABLES
 QLast Update : Tue Jul 08 08:35:32 2025
 Response via : Initial Calibration
 Integrator: ChemStation

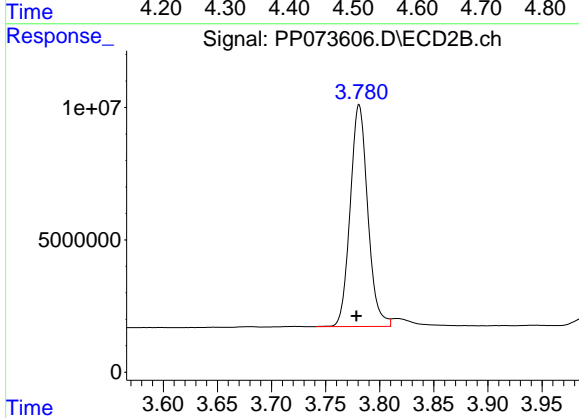
Volume Inj. : 2 µl
 Signal #1 Phase : ZB-MR1 Signal #2 Phase: ZB-MR2
 Signal #1 Info : 30Mx0.32mmx 0.50µ Signal #2 Info : 30M x 0.32mm x 0.25µm



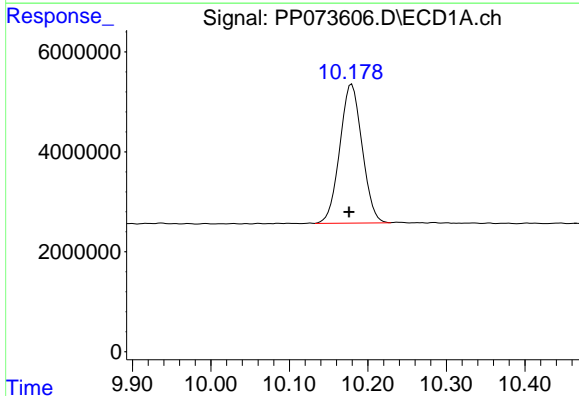


#1 Tetrachloro-m-xylene
 R.T.: 4.490 min
 Delta R.T.: 0.002 min
 Response: 70655605
 Conc: 51.59 ng/ml

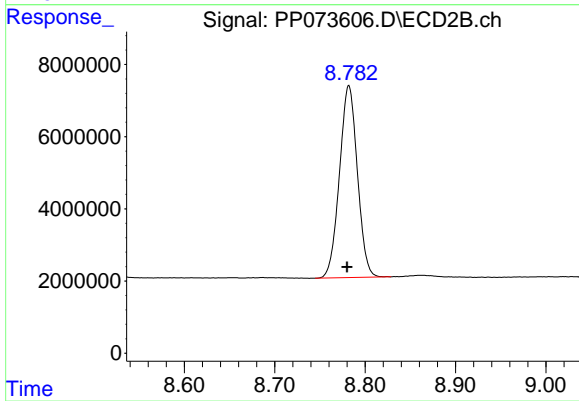
Instrument :
 ECD_P
 ClientSampleId :
 AR1242CCC500



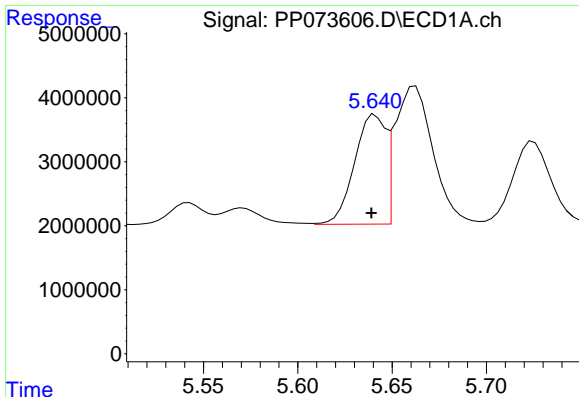
#1 Tetrachloro-m-xylene
 R.T.: 3.781 min
 Delta R.T.: 0.002 min
 Response: 94730205
 Conc: 51.42 ng/ml



#2 Decachlorobiphenyl
 R.T.: 10.180 min
 Delta R.T.: 0.003 min
 Response: 54941300
 Conc: 50.36 ng/ml



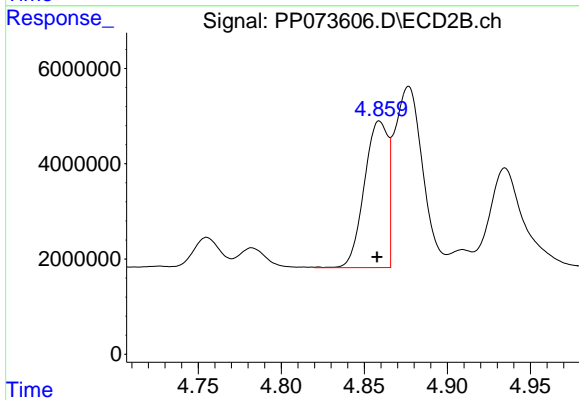
#2 Decachlorobiphenyl
 R.T.: 8.782 min
 Delta R.T.: 0.002 min
 Response: 73317957
 Conc: 55.41 ng/ml



#3 AR-1016-1

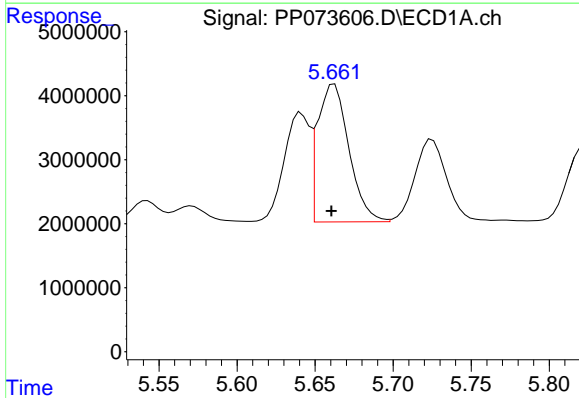
R.T.: 5.641 min
 Delta R.T.: 0.002 min
 Response: 19551766
 Conc: 411.50 ng/ml

Instrument :
 ECD_P
 ClientSampleId :
 AR1242CCC500



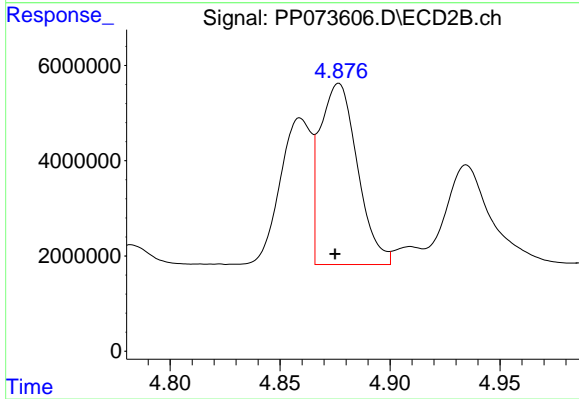
#3 AR-1016-1

R.T.: 4.859 min
 Delta R.T.: 0.002 min
 Response: 30431872
 Conc: 446.38 ng/ml



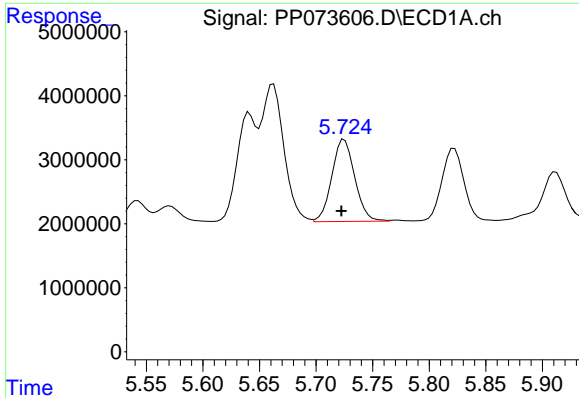
#4 AR-1016-2

R.T.: 5.662 min
 Delta R.T.: 0.002 min
 Response: 30106693
 Conc: 422.76 ng/ml



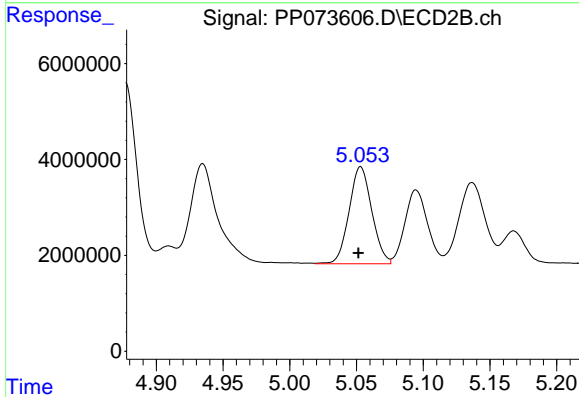
#4 AR-1016-2

R.T.: 4.877 min
 Delta R.T.: 0.002 min
 Response: 45017376
 Conc: 441.85 ng/ml

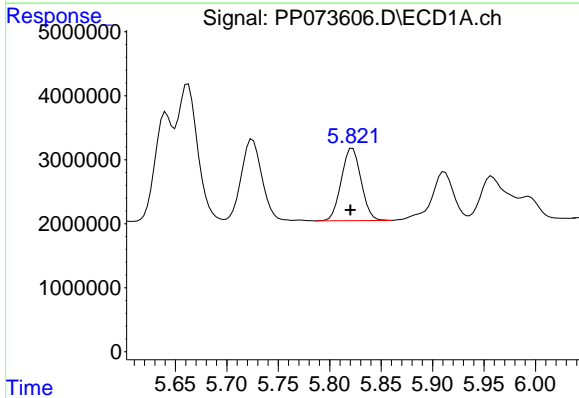


#5 AR-1016-3
 R.T.: 5.725 min
 Delta R.T.: 0.003 min
 Response: 18099589
 Conc: 414.53 ng/ml

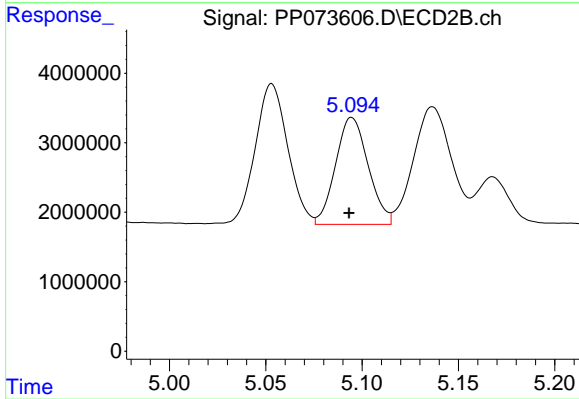
Instrument :
 ECD_P
 ClientSampleId :
 AR1242CCC500



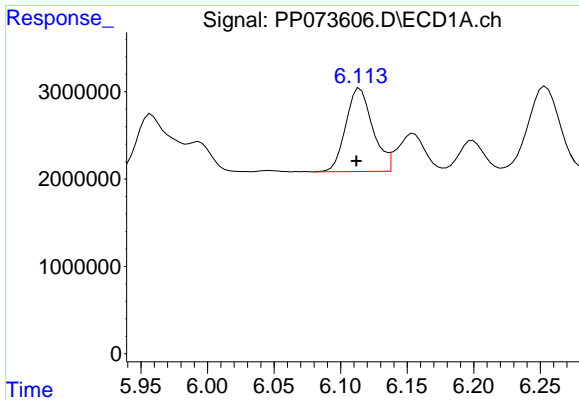
#5 AR-1016-3
 R.T.: 5.053 min
 Delta R.T.: 0.002 min
 Response: 24003884
 Conc: 443.64 ng/ml



#6 AR-1016-4
 R.T.: 5.822 min
 Delta R.T.: 0.002 min
 Response: 15133204
 Conc: 421.00 ng/ml



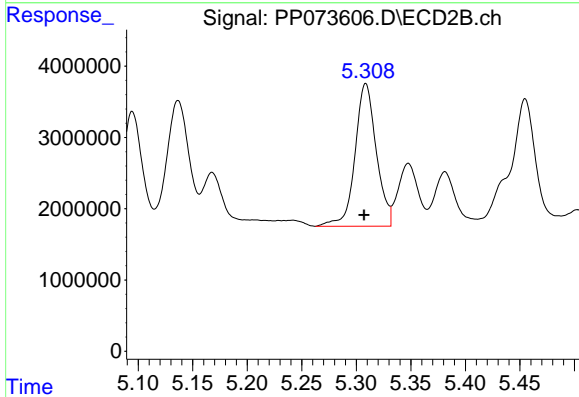
#6 AR-1016-4
 R.T.: 5.095 min
 Delta R.T.: 0.001 min
 Response: 18149278
 Conc: 413.60 ng/ml



#7 AR-1016-5

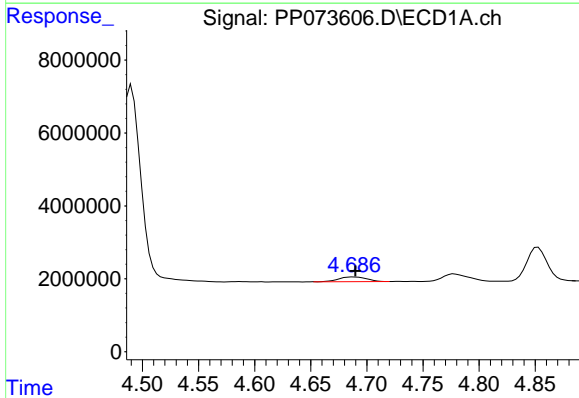
R.T.: 6.115 min
 Delta R.T.: 0.003 min
 Response: 13408769
 Conc: 427.98 ng/ml

Instrument :
 ECD_P
 ClientSampleId :
 AR1242CCC500



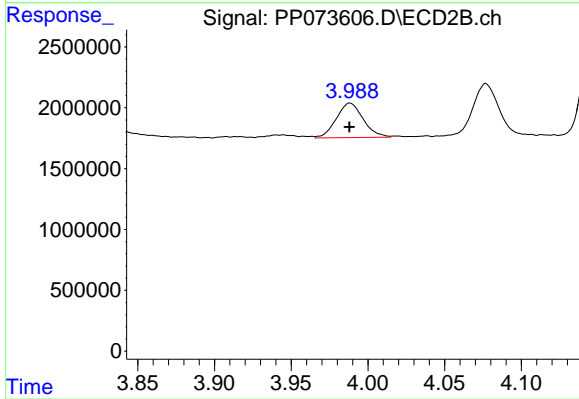
#7 AR-1016-5

R.T.: 5.309 min
 Delta R.T.: 0.002 min
 Response: 27189942
 Conc: 498.14 ng/ml



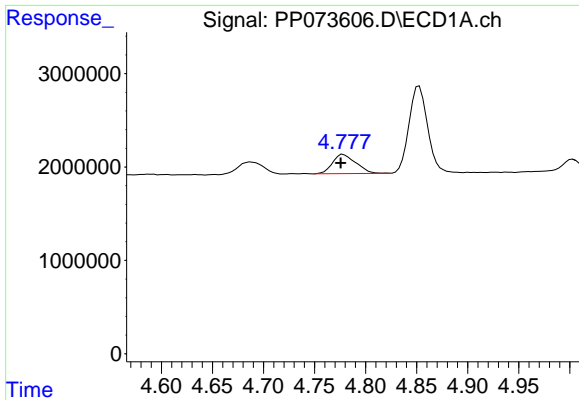
#8 AR-1221-1

R.T.: 4.688 min
 Delta R.T.: -0.002 min
 Response: 2272495
 Conc: 127.19 ng/ml



#8 AR-1221-1

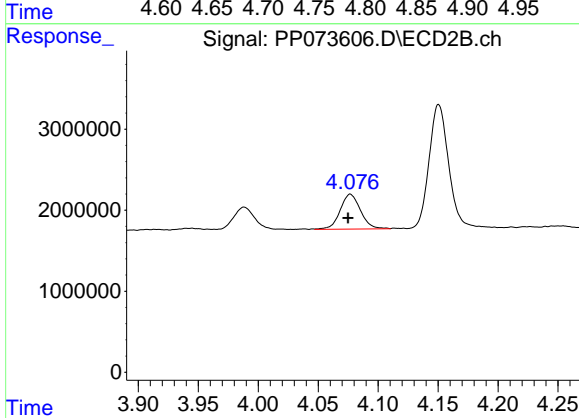
R.T.: 3.988 min
 Delta R.T.: 0.000 min
 Response: 3487588
 Conc: 128.96 ng/ml



#9 AR-1221-2

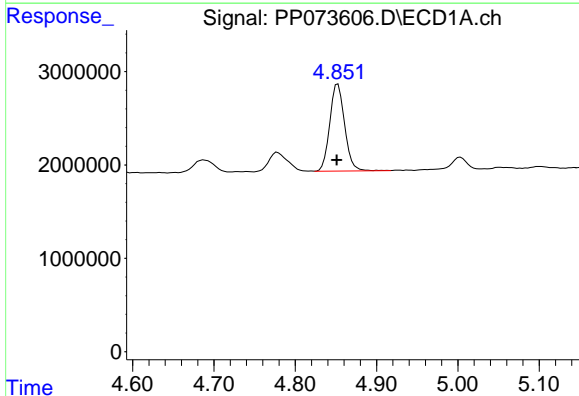
R.T.: 4.778 min
 Delta R.T.: 0.003 min
 Response: 3298489
 Conc: 244.25 ng/ml

Instrument :
 ECD_P
 ClientSampleId :
 AR1242CCC500



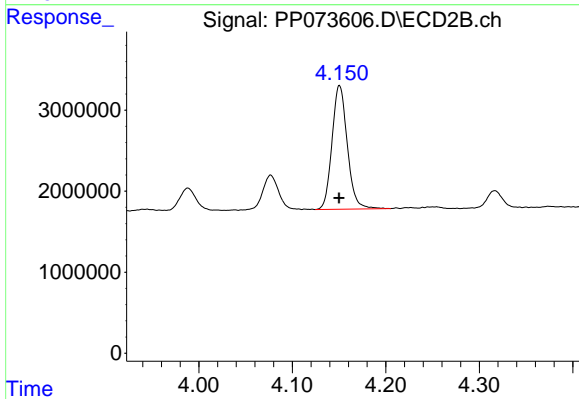
#9 AR-1221-2

R.T.: 4.077 min
 Delta R.T.: 0.002 min
 Response: 5111974
 Conc: 251.08 ng/ml



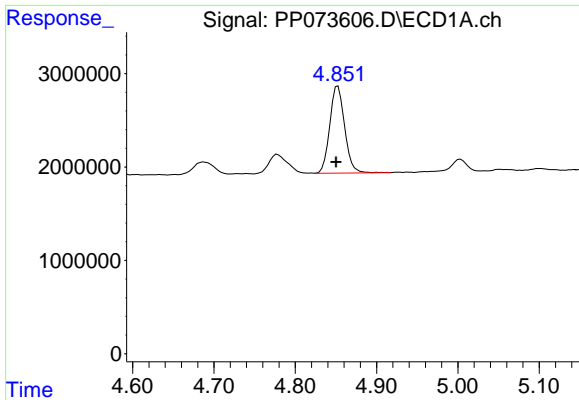
#10 AR-1221-3

R.T.: 4.852 min
 Delta R.T.: 0.002 min
 Response: 11872217
 Conc: 285.36 ng/ml



#10 AR-1221-3

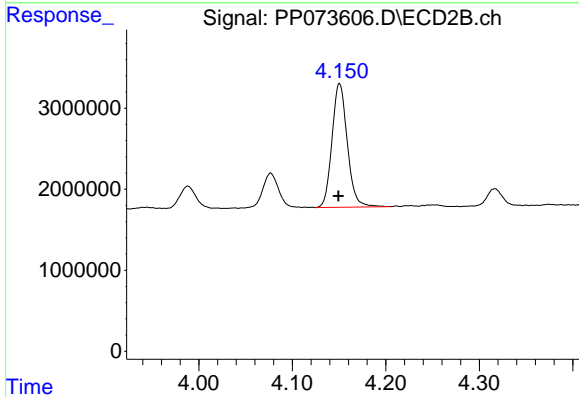
R.T.: 4.151 min
 Delta R.T.: 0.000 min
 Response: 17374736
 Conc: 282.75 ng/ml



#11 AR-1232-1

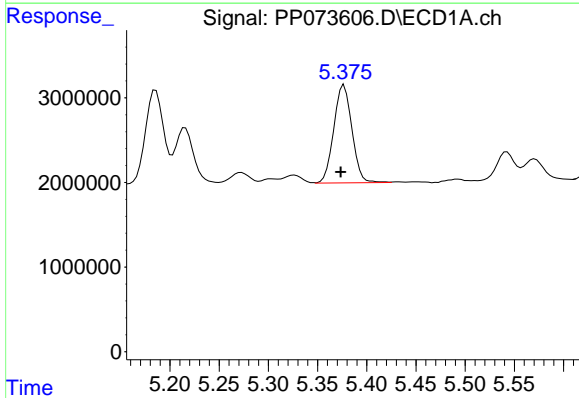
R.T.: 4.852 min
 Delta R.T.: 0.002 min
 Response: 11872217
 Conc: 363.61 ng/ml

Instrument :
 ECD_P
 ClientSampleId :
 AR1242CCC500



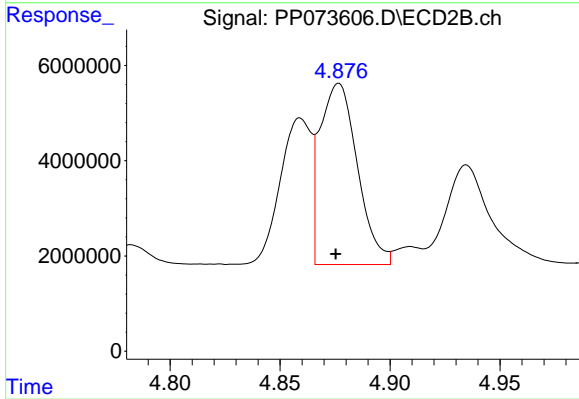
#11 AR-1232-1

R.T.: 4.151 min
 Delta R.T.: 0.001 min
 Response: 17374736
 Conc: 372.73 ng/ml



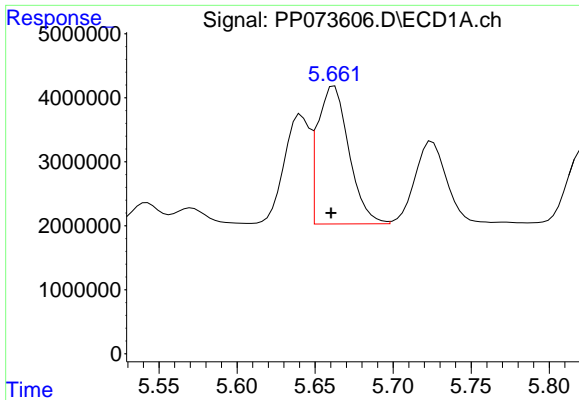
#12 AR-1232-2

R.T.: 5.377 min
 Delta R.T.: 0.003 min
 Response: 14839290
 Conc: 912.92 ng/ml



#12 AR-1232-2

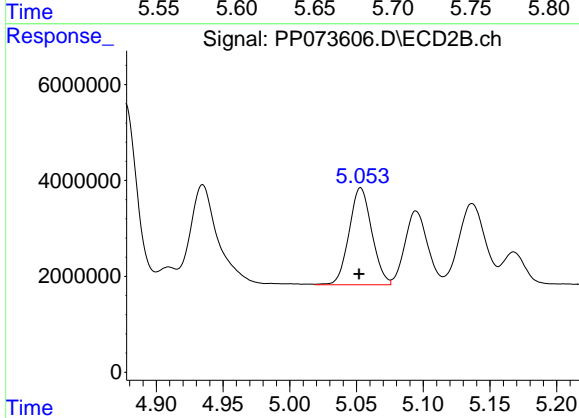
R.T.: 4.877 min
 Delta R.T.: 0.001 min
 Response: 45017376
 Conc: 944.56 ng/ml



#13 AR-1232-3

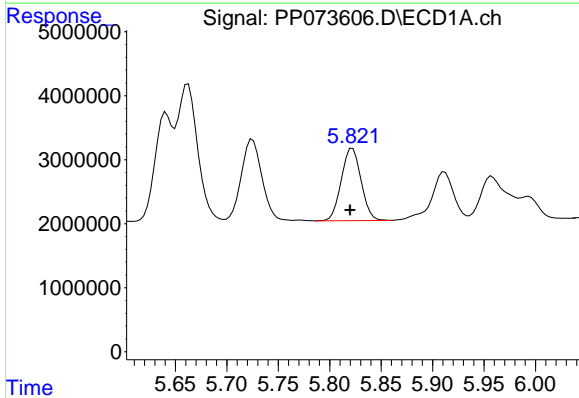
R.T.: 5.662 min
 Delta R.T.: 0.002 min
 Response: 30106693
 Conc: 912.50 ng/ml

Instrument :
 ECD_P
 ClientSampleId :
 AR1242CCC500



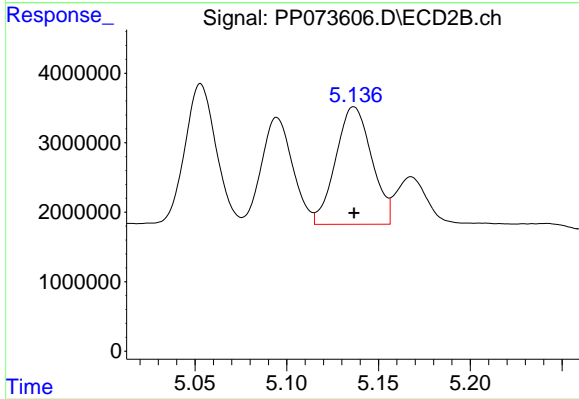
#13 AR-1232-3

R.T.: 5.053 min
 Delta R.T.: 0.001 min
 Response: 24003884
 Conc: 959.04 ng/ml



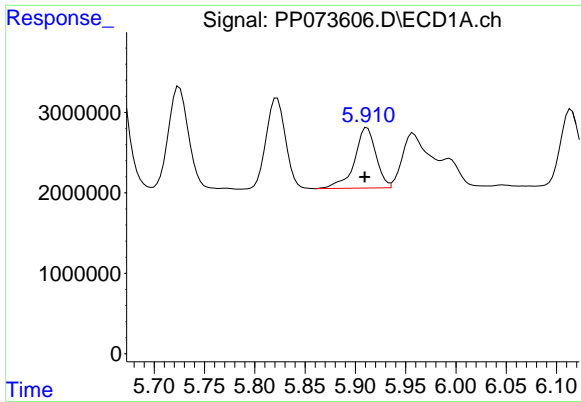
#14 AR-1232-4

R.T.: 5.822 min
 Delta R.T.: 0.002 min
 Response: 15133204
 Conc: 920.22 ng/ml



#14 AR-1232-4

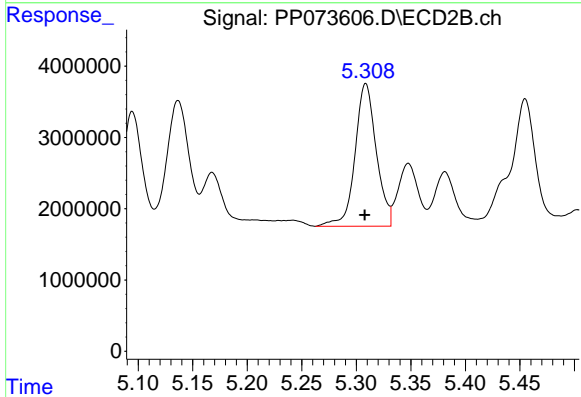
R.T.: 5.137 min
 Delta R.T.: 0.000 min
 Response: 23109122
 Conc: 1067.09 ng/ml



#15 AR-1232-5

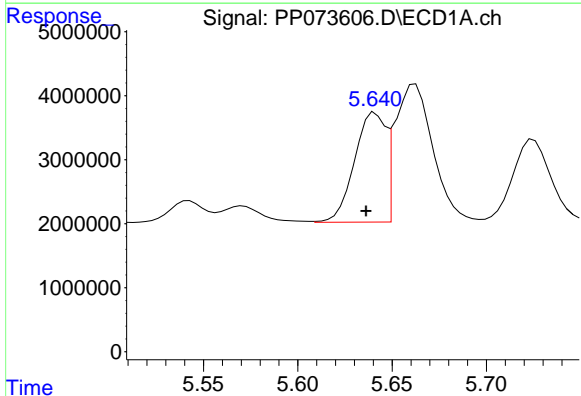
R.T.: 5.912 min
 Delta R.T.: 0.002 min
 Response: 11131453
 Conc: 1053.08 ng/ml

Instrument :
 ECD_P
 ClientSampleId :
 AR1242CCC500



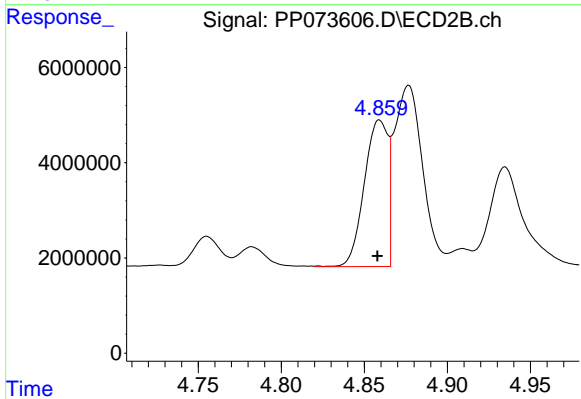
#15 AR-1232-5

R.T.: 5.309 min
 Delta R.T.: 0.000 min
 Response: 27189942
 Conc: 1205.04 ng/ml



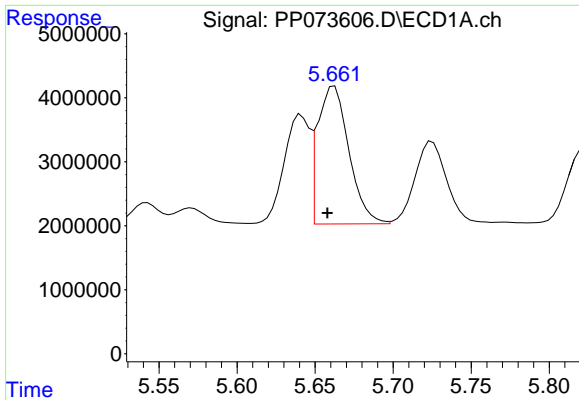
#16 AR-1242-1

R.T.: 5.641 min
 Delta R.T.: 0.005 min
 Response: 19551766
 Conc: 511.98 ng/ml



#16 AR-1242-1

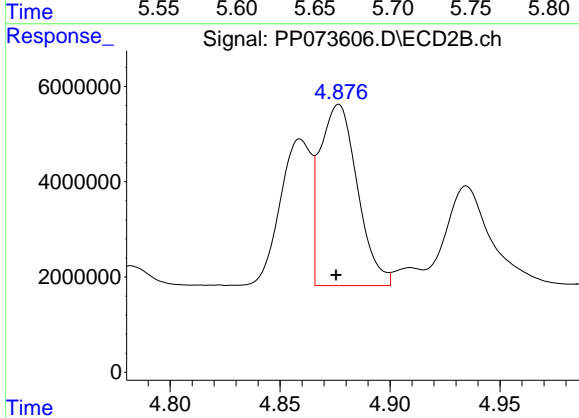
R.T.: 4.859 min
 Delta R.T.: 0.001 min
 Response: 30431872
 Conc: 526.82 ng/ml



#17 AR-1242-2

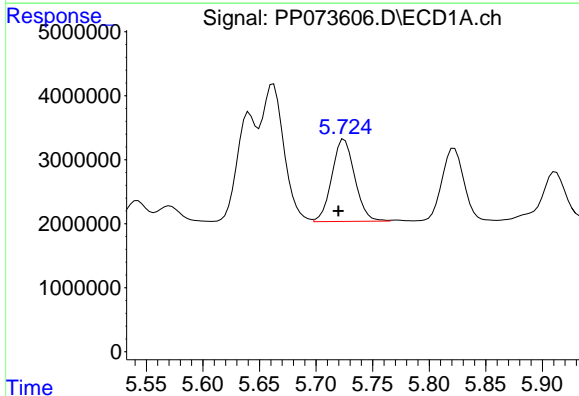
R.T.: 5.662 min
 Delta R.T.: 0.005 min
 Response: 30106693
 Conc: 502.77 ng/ml

Instrument :
 ECD_P
 ClientSampleId :
 AR1242CCC500



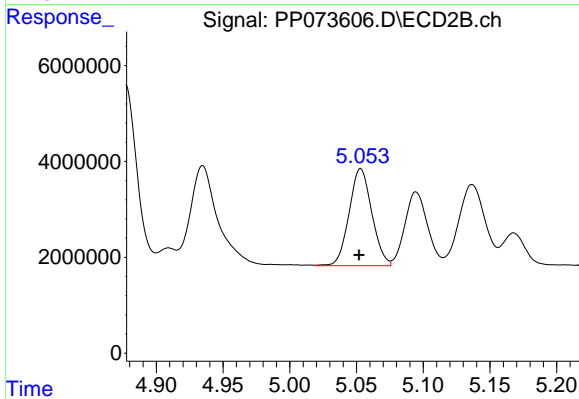
#17 AR-1242-2

R.T.: 4.877 min
 Delta R.T.: 0.001 min
 Response: 45017376
 Conc: 520.71 ng/ml



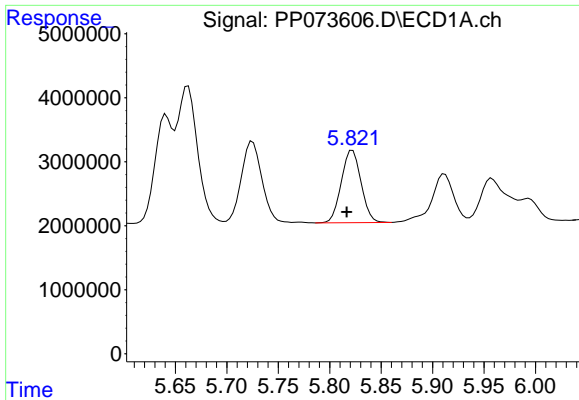
#18 AR-1242-3

R.T.: 5.725 min
 Delta R.T.: 0.005 min
 Response: 18099589
 Conc: 494.24 ng/ml



#18 AR-1242-3

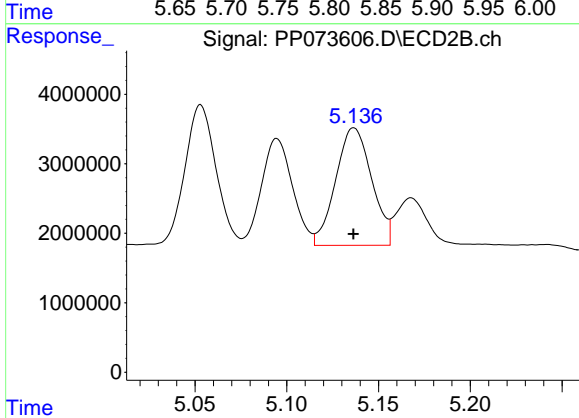
R.T.: 5.053 min
 Delta R.T.: 0.001 min
 Response: 24003884
 Conc: 522.43 ng/ml



#19 AR-1242-4

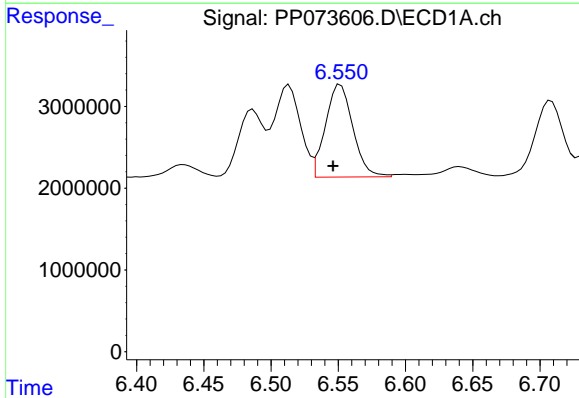
R.T.: 5.822 min
 Delta R.T.: 0.006 min
 Response: 15133204
 Conc: 470.91 ng/ml

Instrument :
 ECD_P
 ClientSampleId :
 AR1242CCC500



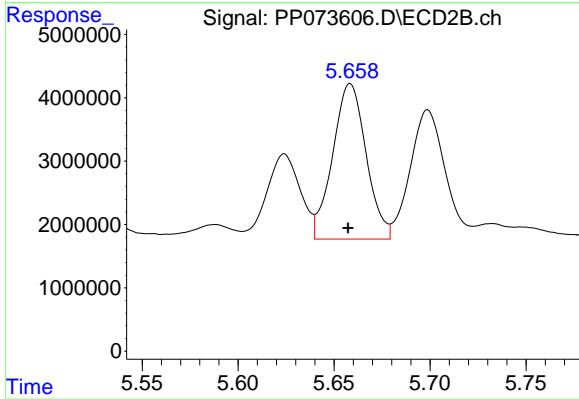
#19 AR-1242-4

R.T.: 5.137 min
 Delta R.T.: 0.000 min
 Response: 23109122
 Conc: 522.08 ng/ml



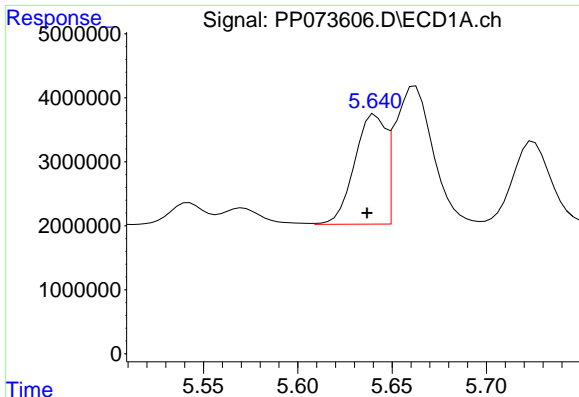
#20 AR-1242-5

R.T.: 6.552 min
 Delta R.T.: 0.006 min
 Response: 15957868
 Conc: 487.46 ng/ml



#20 AR-1242-5

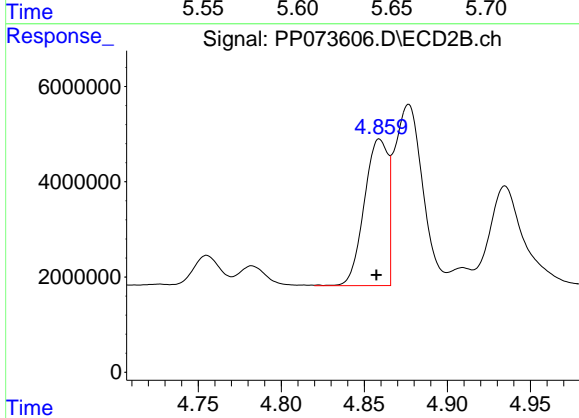
R.T.: 5.658 min
 Delta R.T.: 0.001 min
 Response: 29864436
 Conc: 540.61 ng/ml



#21 AR-1248-1

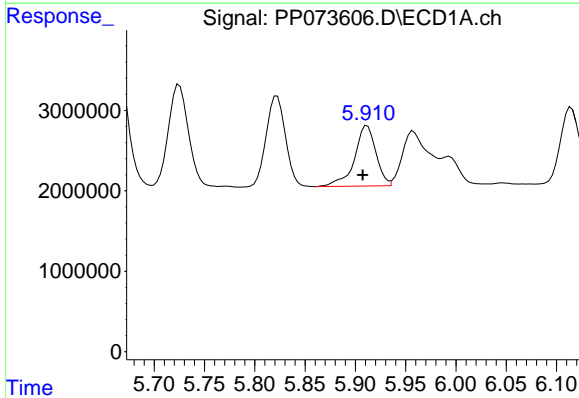
R.T.: 5.641 min
 Delta R.T.: 0.004 min
 Response: 19551766
 Conc: 633.35 ng/ml

Instrument :
 ECD_P
 ClientSampleId :
 AR1242CCC500



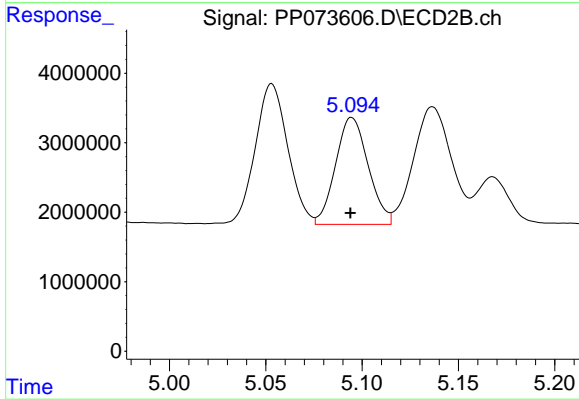
#21 AR-1248-1

R.T.: 4.859 min
 Delta R.T.: 0.002 min
 Response: 30431872
 Conc: 677.85 ng/ml



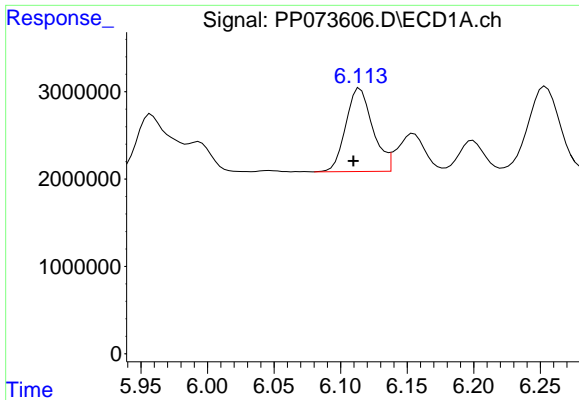
#22 AR-1248-2

R.T.: 5.912 min
 Delta R.T.: 0.004 min
 Response: 11131453
 Conc: 278.82 ng/ml



#22 AR-1248-2

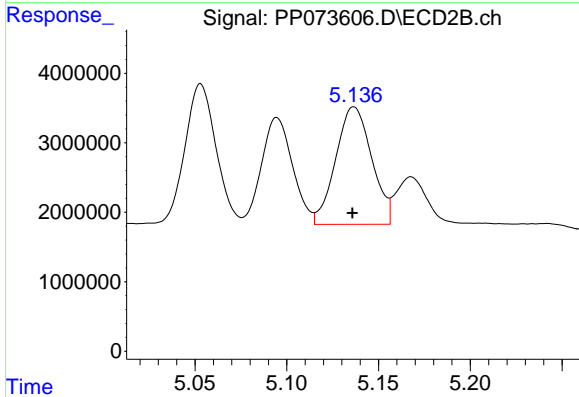
R.T.: 5.095 min
 Delta R.T.: 0.000 min
 Response: 18149278
 Conc: 294.94 ng/ml



#23 AR-1248-3

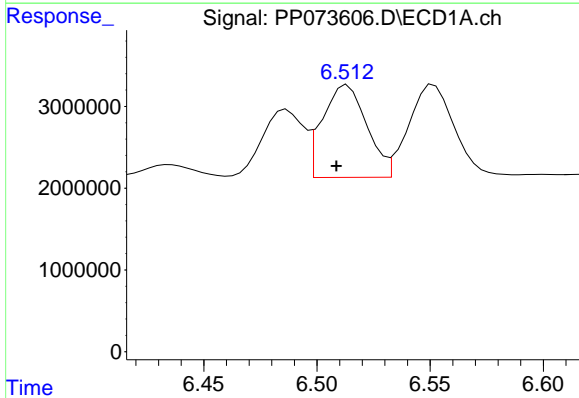
R.T.: 6.115 min
 Delta R.T.: 0.005 min
 Response: 13408769
 Conc: 301.93 ng/ml

Instrument :
 ECD_P
 ClientSampleId :
 AR1242CCC500



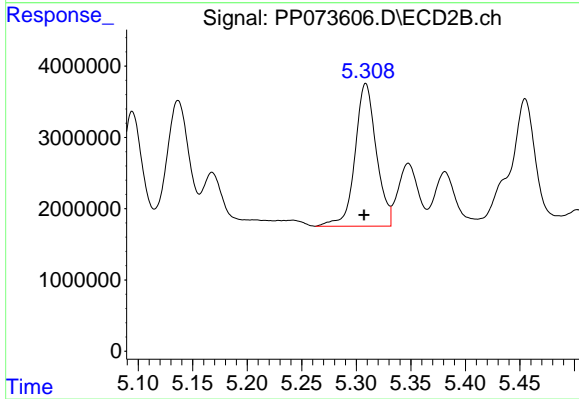
#23 AR-1248-3

R.T.: 5.137 min
 Delta R.T.: 0.000 min
 Response: 23109122
 Conc: 360.72 ng/ml



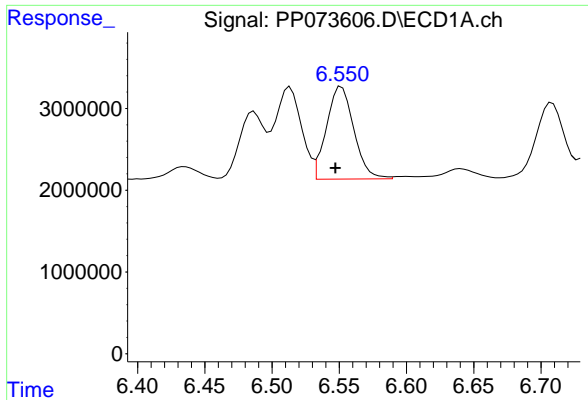
#24 AR-1248-4

R.T.: 6.514 min
 Delta R.T.: 0.005 min
 Response: 15374653
 Conc: 279.13 ng/ml



#24 AR-1248-4

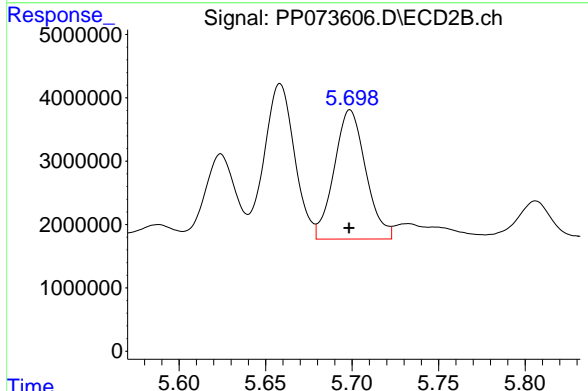
R.T.: 5.309 min
 Delta R.T.: 0.001 min
 Response: 27189942
 Conc: 360.72 ng/ml



#25 AR-1248-5

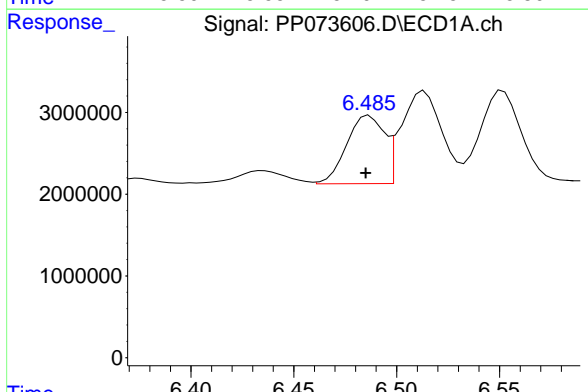
R.T.: 6.552 min
 Delta R.T.: 0.004 min
 Response: 15957868
 Conc: 296.67 ng/ml

Instrument :
 ECD_P
 ClientSampleId :
 AR1242CCC500



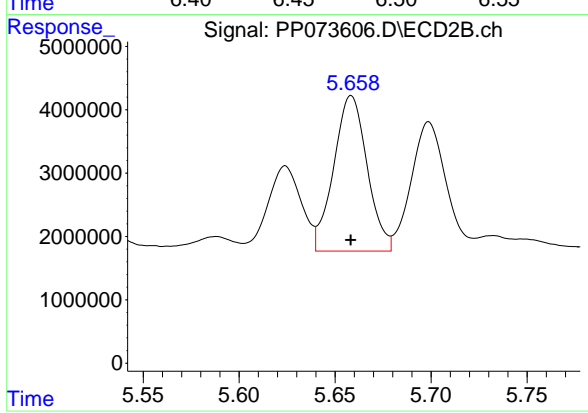
#25 AR-1248-5

R.T.: 5.699 min
 Delta R.T.: 0.000 min
 Response: 25830980
 Conc: 346.30 ng/ml



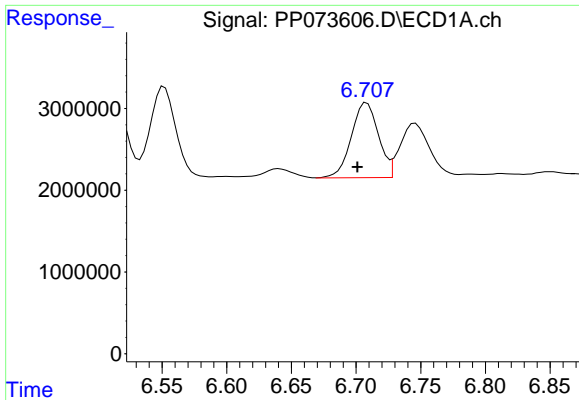
#26 AR-1254-1

R.T.: 6.487 min
 Delta R.T.: 0.002 min
 Response: 10637453
 Conc: 198.50 ng/ml



#26 AR-1254-1

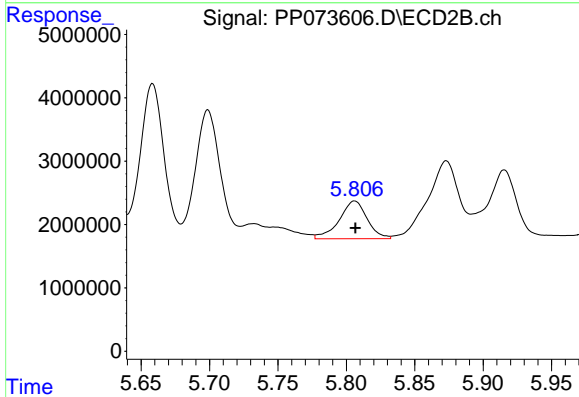
R.T.: 5.658 min
 Delta R.T.: 0.000 min
 Response: 29864436
 Conc: 257.39 ng/ml



#27 AR-1254-2

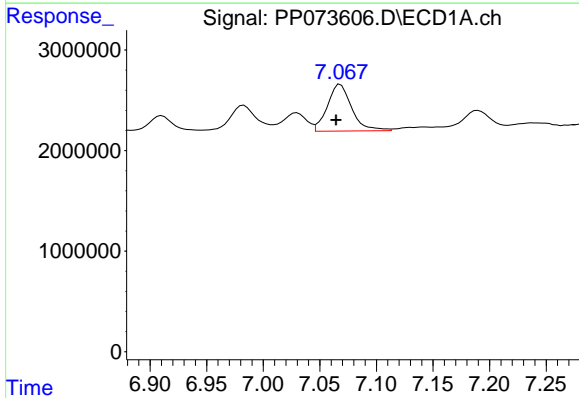
R.T.: 6.708 min
 Delta R.T.: 0.007 min
 Response: 13364701
 Conc: 160.46 ng/ml

Instrument :
 ECD_P
 ClientSampleId :
 AR1242CCC500



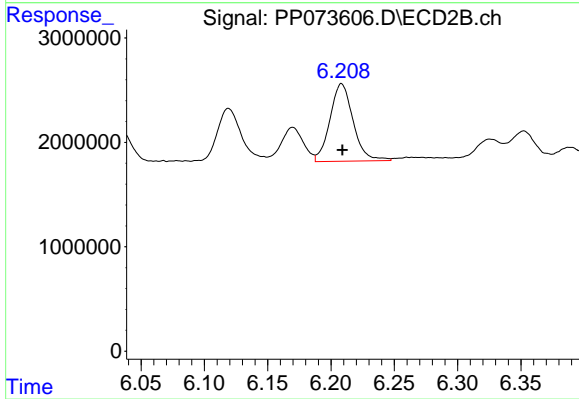
#27 AR-1254-2

R.T.: 5.806 min
 Delta R.T.: 0.000 min
 Response: 8471173
 Conc: 84.19 ng/ml



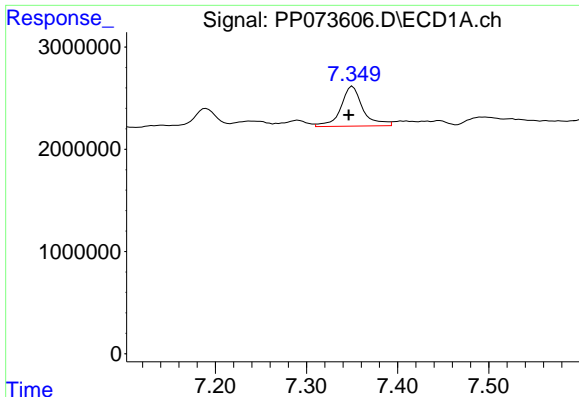
#28 AR-1254-3

R.T.: 7.068 min
 Delta R.T.: 0.004 min
 Response: 6953076
 Conc: 78.72 ng/ml



#28 AR-1254-3

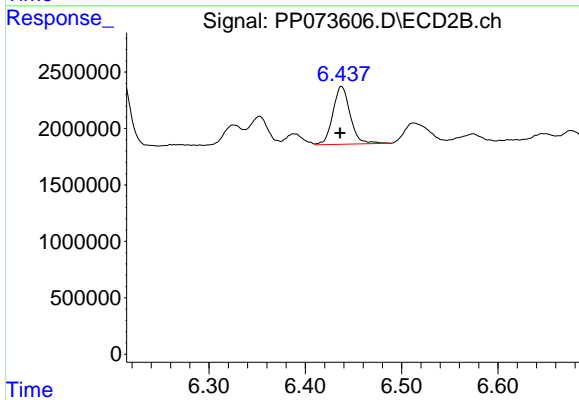
R.T.: 6.208 min
 Delta R.T.: 0.000 min
 Response: 9477502
 Conc: 61.36 ng/ml



#29 AR-1254-4

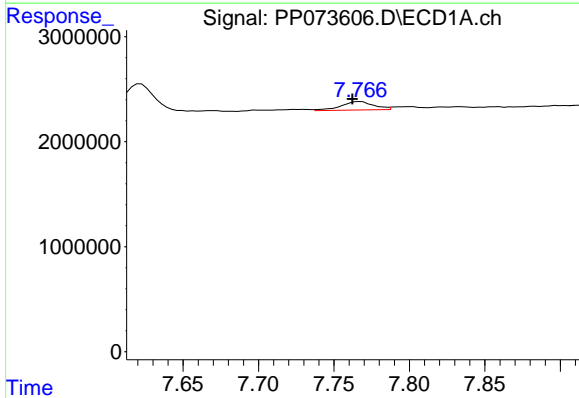
R.T.: 7.351 min
 Delta R.T.: 0.004 min
 Response: 6570314
 Conc: 83.52 ng/ml

Instrument :
 ECD_P
 ClientSampleId :
 AR1242CCC500



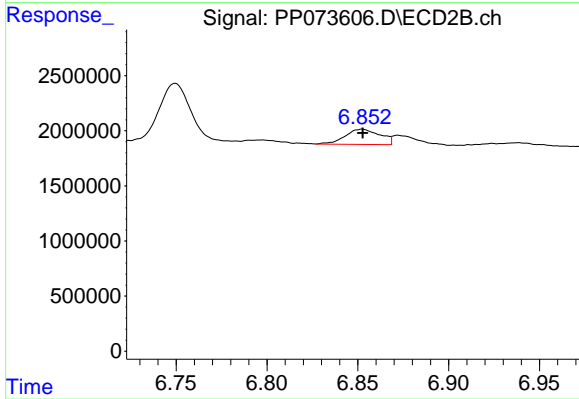
#29 AR-1254-4

R.T.: 6.438 min
 Delta R.T.: 0.001 min
 Response: 6397106
 Conc: 67.65 ng/ml



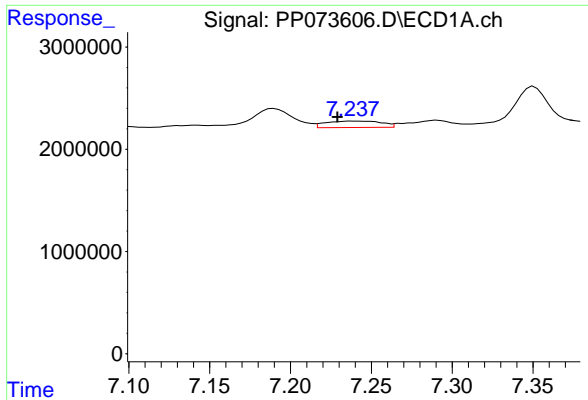
#30 AR-1254-5

R.T.: 7.768 min
 Delta R.T.: 0.006 min
 Response: 1196348
 Conc: 16.24 ng/ml



#30 AR-1254-5

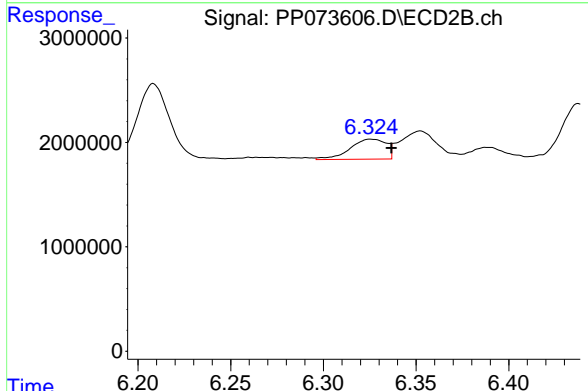
R.T.: 6.852 min
 Delta R.T.: 0.000 min
 Response: 1845126
 Conc: 13.83 ng/ml



#31 AR-1260-1

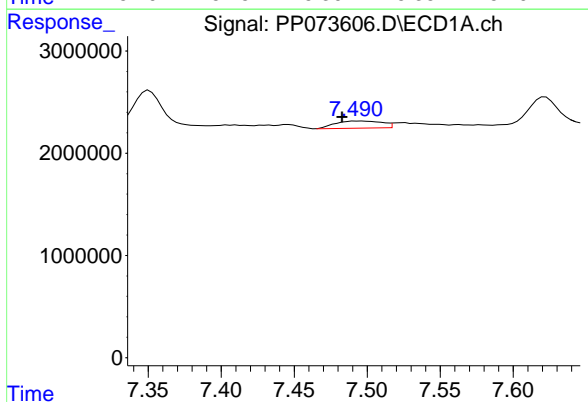
R.T.: 7.239 min
 Delta R.T.: 0.010 min
 Response: 1499684
 Conc: 25.44 ng/ml

Instrument :
 ECD_P
 ClientSampleId :
 AR1242CCC500



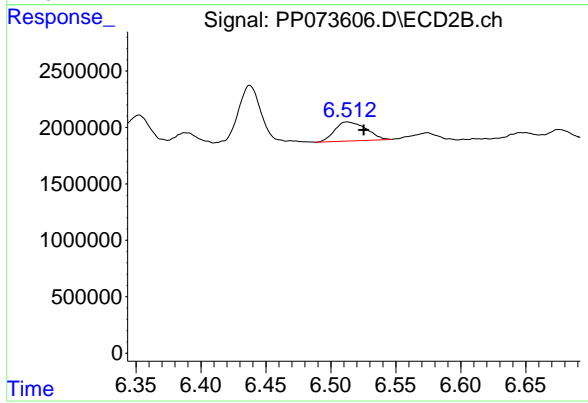
#31 AR-1260-1

R.T.: 6.326 min
 Delta R.T.: -0.011 min
 Response: 2617446
 Conc: 26.83 ng/ml



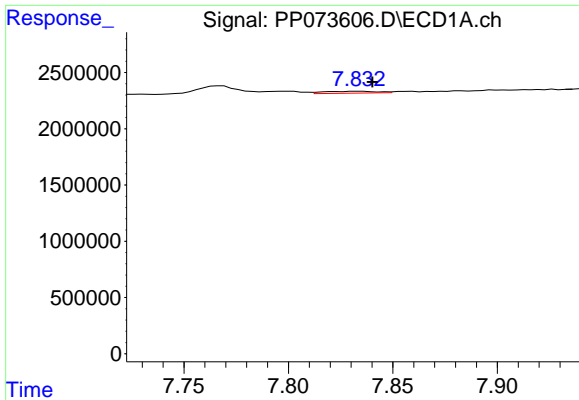
#32 AR-1260-2

R.T.: 7.492 min
 Delta R.T.: 0.010 min
 Response: 1570239
 Conc: 16.38 ng/ml



#32 AR-1260-2

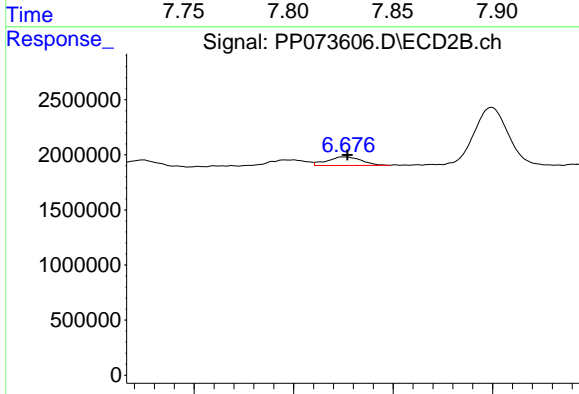
R.T.: 6.513 min
 Delta R.T.: -0.013 min
 Response: 2839736
 Conc: 23.12 ng/ml



#33 AR-1260-3

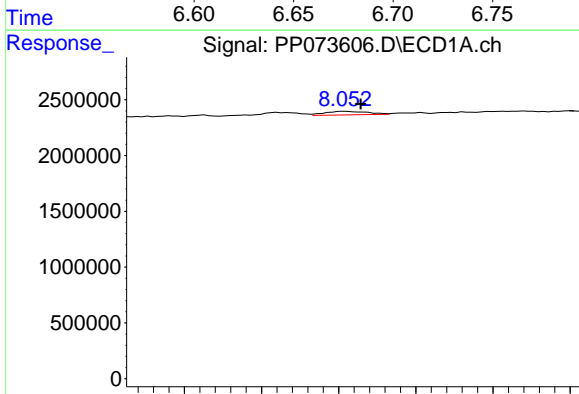
R.T.: 7.834 min
 Delta R.T.: -0.006 min
 Response: 301190
 Conc: 4.12 ng/ml

Instrument :
 ECD_P
 ClientSampleId :
 AR1242CCC500



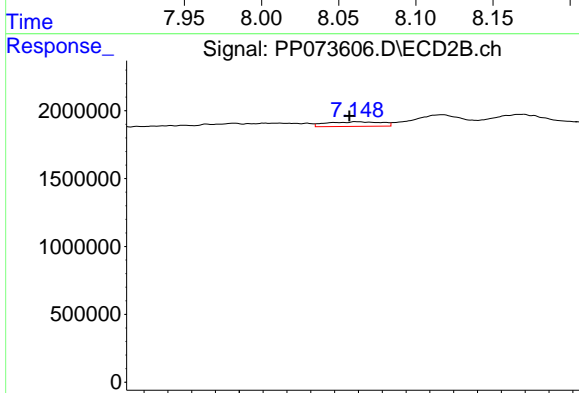
#33 AR-1260-3

R.T.: 6.676 min
 Delta R.T.: -0.001 min
 Response: 941284
 Conc: 8.60 ng/ml



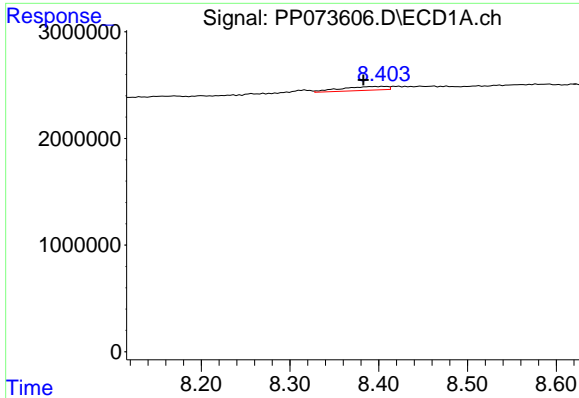
#34 AR-1260-4

R.T.: 8.054 min
 Delta R.T.: -0.010 min
 Response: 625592
 Conc: 9.58 ng/ml



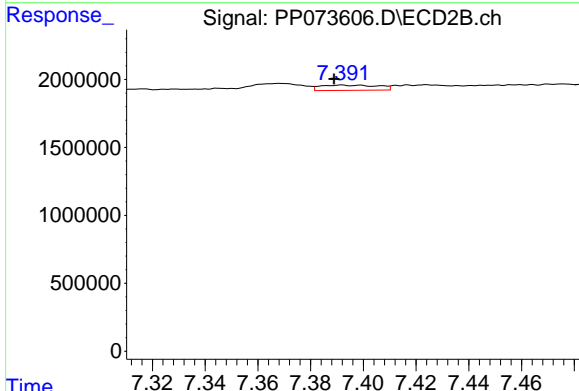
#34 AR-1260-4

R.T.: 7.150 min
 Delta R.T.: 0.003 min
 Response: 544859
 Conc: 6.09 ng/ml

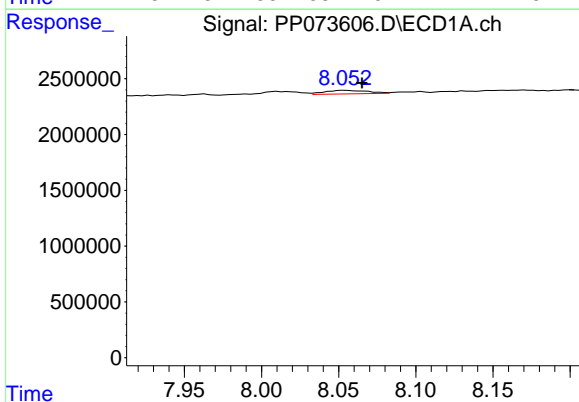


#35 AR-1260-5
 R.T.: 8.397 min
 Delta R.T.: 0.014 min
 Response: 1282125
 Conc: 8.50 ng/ml

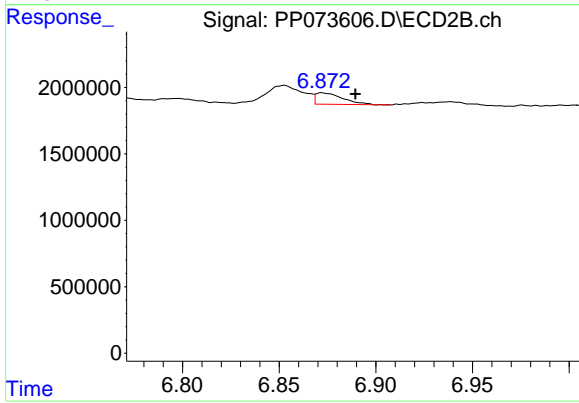
Instrument : ECD_P
 ClientSampleId : AR1242CCC500



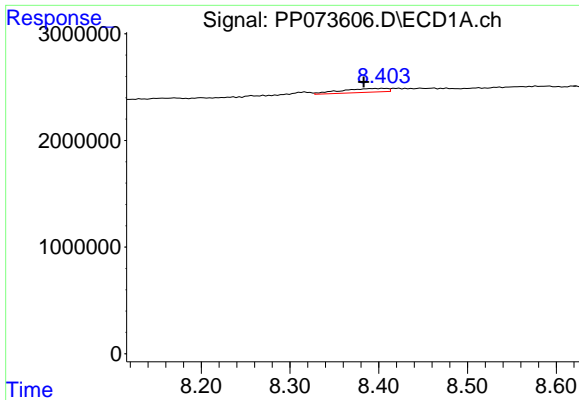
#35 AR-1260-5
 R.T.: 7.392 min
 Delta R.T.: 0.003 min
 Response: 583408
 Conc: 2.60 ng/ml



#36 AR-1262-1
 R.T.: 8.054 min
 Delta R.T.: -0.011 min
 Response: 625592
 Conc: 7.19 ng/ml



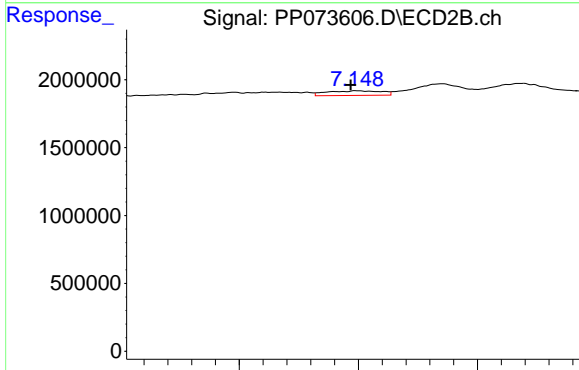
#36 AR-1262-1
 R.T.: 6.872 min
 Delta R.T.: -0.017 min
 Response: 837053
 Conc: 5.67 ng/ml



#37 AR-1262-2

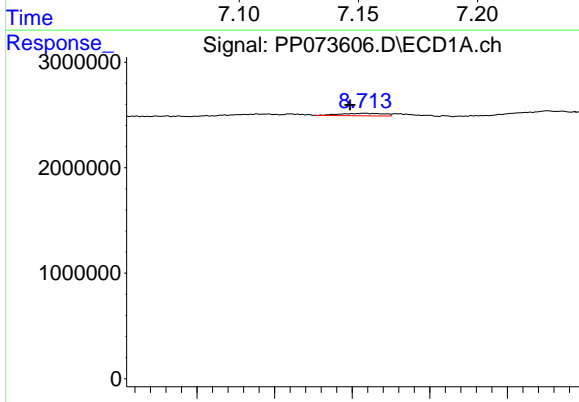
R.T.: 8.397 min
 Delta R.T.: 0.014 min
 Response: 1282125
 Conc: 6.47 ng/ml

Instrument :
 ECD_P
 ClientSampleId :
 AR1242CCC500



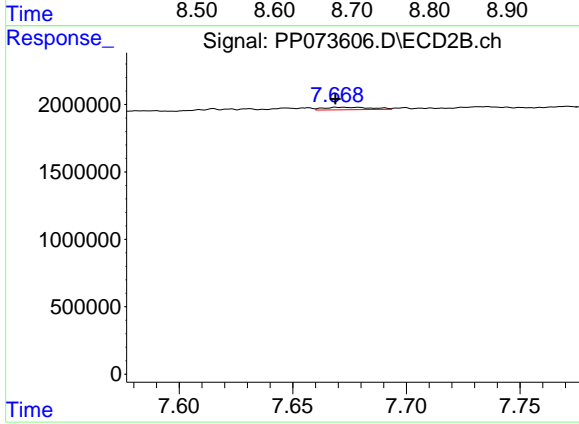
#37 AR-1262-2

R.T.: 7.150 min
 Delta R.T.: 0.003 min
 Response: 544859
 Conc: 4.26 ng/ml



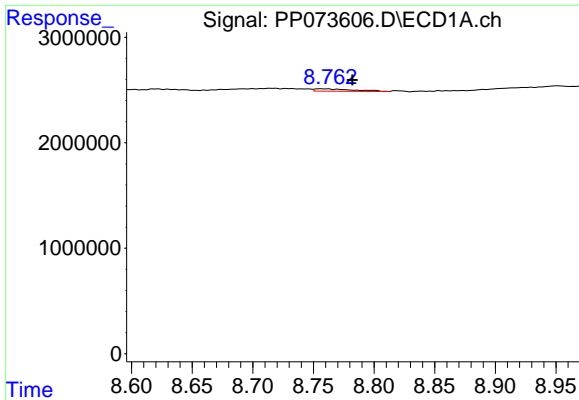
#38 AR-1262-3

R.T.: 8.714 min
 Delta R.T.: 0.017 min
 Response: 912652
 Conc: 7.26 ng/ml



#38 AR-1262-3

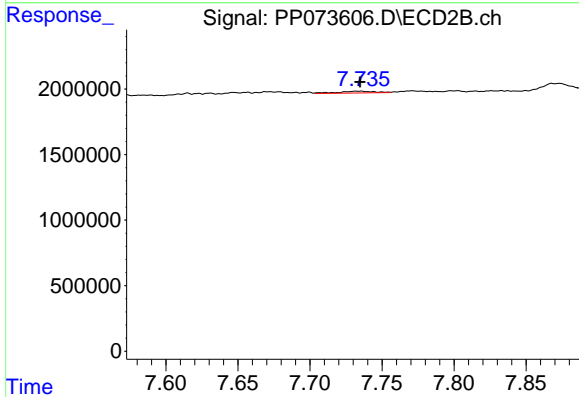
R.T.: 7.671 min
 Delta R.T.: 0.002 min
 Response: 271463
 Conc: 2.38 ng/ml



#39 AR-1262-4

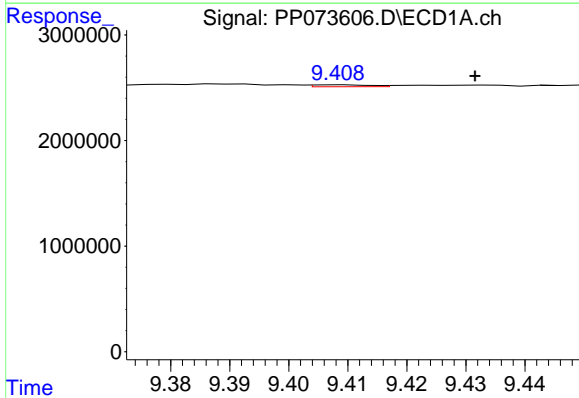
R.T.: 8.763 min
 Delta R.T.: -0.019 min
 Response: 533136
 Conc: 5.72 ng/ml

Instrument :
 ECD_P
 ClientSampleId :
 AR1242CCC500



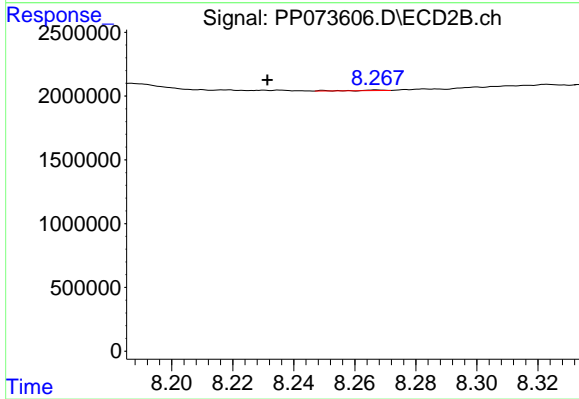
#39 AR-1262-4

R.T.: 7.735 min
 Delta R.T.: 0.000 min
 Response: 232440
 Conc: 1.26 ng/ml



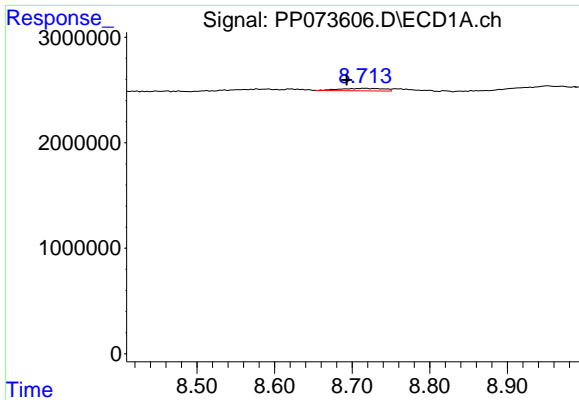
#40 AR-1262-5

R.T.: 9.409 min
 Delta R.T.: -0.023 min
 Response: 121647
 Conc: 1.92 ng/ml



#40 AR-1262-5

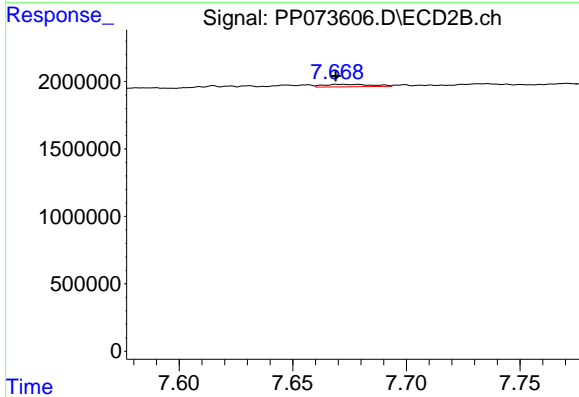
R.T.: 8.267 min
 Delta R.T.: 0.036 min
 Response: 28177
 Conc: 0.33 ng/ml



#41 AR-1268-1

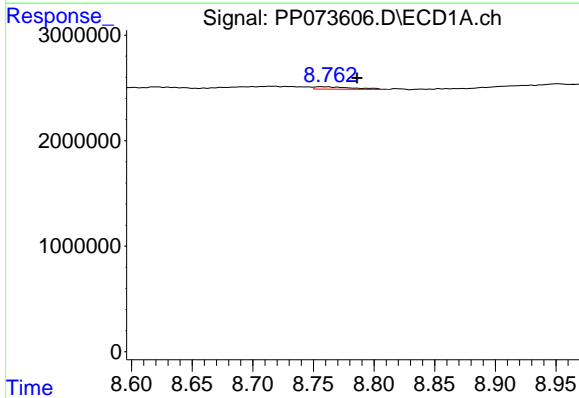
R.T.: 8.714 min
 Delta R.T.: 0.021 min
 Response: 912652
 Conc: 4.09 ng/ml

Instrument :
 ECD_P
 ClientSampleId :
 AR1242CCC500



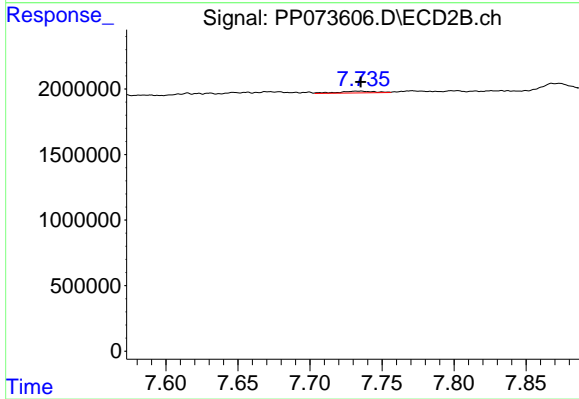
#41 AR-1268-1

R.T.: 7.671 min
 Delta R.T.: 0.002 min
 Response: 271463
 Conc: 0.88 ng/ml



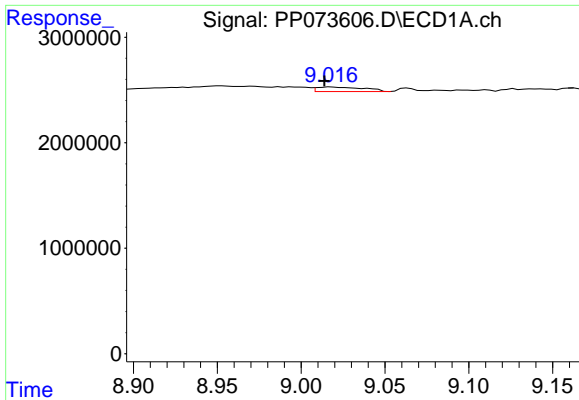
#42 AR-1268-2

R.T.: 8.763 min
 Delta R.T.: -0.023 min
 Response: 533136
 Conc: 2.80 ng/ml



#42 AR-1268-2

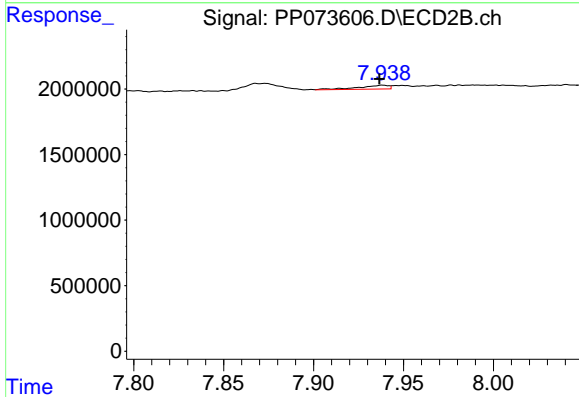
R.T.: 7.735 min
 Delta R.T.: 0.000 min
 Response: 232440
 Conc: 0.87 ng/ml



#43 AR-1268-3

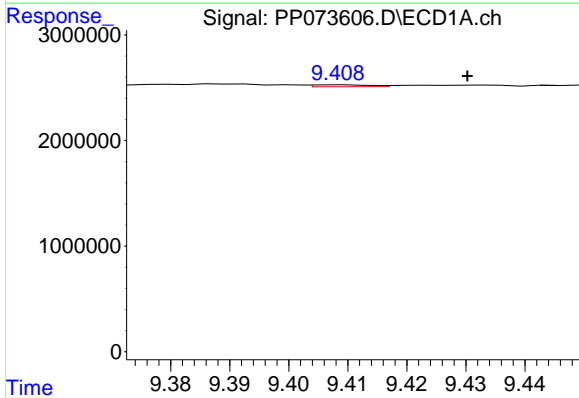
R.T.: 9.018 min
 Delta R.T.: 0.004 min
 Response: 838140
 Conc: 5.06 ng/ml

Instrument :
 ECD_P
 ClientSampleId :
 AR1242CCC500



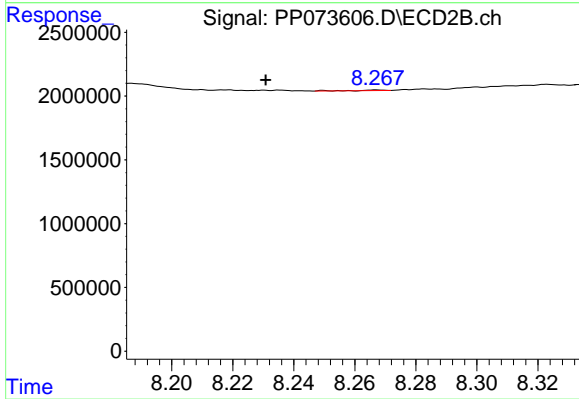
#43 AR-1268-3

R.T.: 7.938 min
 Delta R.T.: 0.002 min
 Response: 349350
 Conc: 1.55 ng/ml



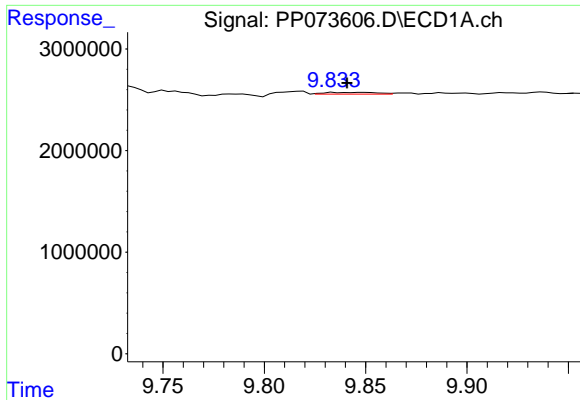
#44 AR-1268-4

R.T.: 9.409 min
 Delta R.T.: -0.022 min
 Response: 121647
 Conc: 1.75 ng/ml



#44 AR-1268-4

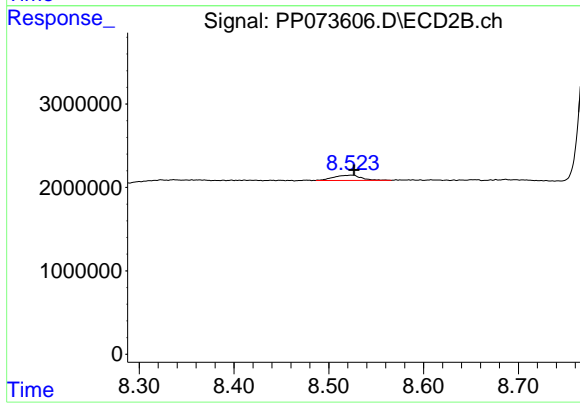
R.T.: 8.267 min
 Delta R.T.: 0.036 min
 Response: 28177
 Conc: 0.30 ng/ml



#45 AR-1268-5

R.T.: 9.849 min
Delta R.T.: 0.009 min
Response: 289817
Conc: 0.63 ng/ml

Instrument :
ECD_P
ClientSampleId :
AR1242CCC500



#45 AR-1268-5

R.T.: 8.524 min
Delta R.T.: -0.003 min
Response: 1276103
Conc: 2.07 ng/ml