

Data Path : Z:\pestpcbsrv\HPCHEM1\ECD\_P\Data\PP070925\  
 Data File : PP073608.D  
 Signal(s) : Signal #1: ECD1A.ch Signal #2: ECD2B.ch  
 Acq On : 08 Jul 2025 15:12  
 Operator : YP\AJ  
 Sample : AR1254CCC500  
 Misc :  
 ALS Vial : 6 Sample Multiplier: 1

Instrument :  
 ECD\_P  
 ClientSampleId :  
 AR1254CCC500

Integration File signal 1: autoint1.e  
 Integration File signal 2: autoint2.e  
 Quant Time: Jul 09 01:40:41 2025  
 Quant Method : Z:\pestpcbsrv\HPCHEM1\ECD\_P\methods\PP070825.M  
 Quant Title : GC EXTRACTABLES  
 QLast Update : Tue Jul 08 08:35:32 2025  
 Response via : Initial Calibration  
 Integrator: ChemStation

Volume Inj. : 2 µl  
 Signal #1 Phase : ZB-MR1 Signal #2 Phase: ZB-MR2  
 Signal #1 Info : 30Mx0.32mmx 0.50µ Signal #2 Info : 30M x 0.32mm x 0.25µm

| Compound                    | RT#1   | RT#2  | Resp#1   | Resp#2   | ng/ml    | ng/ml      |
|-----------------------------|--------|-------|----------|----------|----------|------------|
| System Monitoring Compounds |        |       |          |          |          |            |
| 1) SA Tetrachlo...          | 4.489  | 3.781 | 70554025 | 101.2E6  | 51.517   | 54.927     |
| 2) SA Decachlor...          | 10.177 | 8.781 | 55257484 | 72850344 | 50.646   | 55.058     |
| Target Compounds            |        |       |          |          |          |            |
| 3) L1 AR-1016-1             | 5.638  | 4.859 | 851585   | 2309707  | 17.923   | 33.879 #   |
| 4) L1 AR-1016-2             | 5.664  | 4.876 | 1158453  | 1757297  | 16.267   | 17.248     |
| 5) L1 AR-1016-3             | 5.722  | 5.054 | 534258   | 2286424  | 12.236   | 42.258 #   |
| 6) L1 AR-1016-4             | 5.824  | 5.095 | 512867   | 25430115 | 14.268   | 579.527 #  |
| 7) L1 AR-1016-5             | 6.113  | 5.308 | 8754047  | 23179341 | 279.411  | 424.666 #  |
| 8) L2 AR-1221-1             | 4.663  | 3.986 | 62480    | 328575   | 3.497    | 12.149 #   |
| 9) L2 AR-1221-2             | 4.791  | 4.080 | 1119711  | 1828979  | 82.914   | 89.831     |
| 10) L2 AR-1221-3            | 4.850  | 4.151 | 393651   | 546471   | 9.462    | 8.893      |
| 11) L3 AR-1232-1            | 4.850  | 4.151 | 393651   | 546471   | 12.056   | 11.723     |
| 12) L3 AR-1232-2            | 5.373  | 4.876 | 421342   | 1757297  | 25.921   | 36.872 #   |
| 13) L3 AR-1232-3            | 5.664  | 5.054 | 1158453  | 2286424  | 35.112   | 91.351 #   |
| 14) L3 AR-1232-4            | 5.824  | 5.135 | 512867   | 8731528  | 31.186   | 403.187 #  |
| 15) L3 AR-1232-5            | 5.910  | 5.308 | 14141619 | 23179341 | 1337.856 | 1027.296   |
| 16) L4 AR-1242-1            | 5.638  | 4.859 | 851585   | 2309707  | 22.300   | 39.985 #   |
| 17) L4 AR-1242-2            | 5.664  | 4.876 | 1158453  | 1757297  | 19.346   | 20.326     |
| 18) L4 AR-1242-3            | 5.722  | 5.054 | 534258   | 2286424  | 14.589   | 49.763 #   |
| 19) L4 AR-1242-4            | 5.824  | 5.135 | 512867   | 8731528  | 15.959   | 197.263 #  |
| 20) L4 AR-1242-5            | 6.554  | 5.658 | 11119749 | 64267711 | 339.670  | 1163.375 # |
| 21) L5 AR-1248-1            | 5.638  | 4.859 | 851585   | 2309707  | 27.586   | 51.447 #   |
| 22) L5 AR-1248-2            | 5.910  | 5.095 | 14141619 | 25430115 | 354.219  | 413.252    |
| 23) L5 AR-1248-3            | 6.113  | 5.135 | 8754047  | 8731528  | 197.120  | 136.293 #  |
| 24) L5 AR-1248-4            | 6.511  | 5.308 | 14029375 | 23179341 | 254.707  | 307.510    |
| 25) L5 AR-1248-5            | 6.554  | 5.699 | 11119749 | 11284824 | 206.723  | 151.290 #  |
| 26) L6 AR-1254-1            | 6.488  | 5.658 | 26342356 | 64267711 | 491.558  | 553.888    |
| 27) L6 AR-1254-2            | 6.703  | 5.806 | 42428887 | 55597489 | 509.418  | 552.530    |
| 28) L6 AR-1254-3            | 7.067  | 6.208 | 46657936 | 79489425 | 528.213  | 514.673    |
| 29) L6 AR-1254-4            | 7.349  | 6.436 | 39031178 | 47048365 | 496.157  | 497.555    |
| 30) L6 AR-1254-5            | 7.764  | 6.852 | 35516627 | 67905293 | 482.040  | 508.864    |
| 31) L7 AR-1260-1            | 7.230  | 6.338 | 18674173 | 37744943 | 316.719  | 386.888    |
| 32) L7 AR-1260-2            | 7.483  | 6.526 | 22593934 | 33021219 | 235.747  | 268.820    |
| 33) L7 AR-1260-3            | 7.828  | 6.677 | 4559294  | 31782464 | 62.396   | 290.347 #  |
| 34) L7 AR-1260-4            | 8.051  | 7.147 | 13747725 | 3808322  | 210.532  | 42.595 #   |
| 35) L7 AR-1260-5            | 8.383  | 7.389 | 5979558  | 8825681  | 39.638   | 39.271     |
| 36) L8 AR-1262-1            | 8.051  | 6.922 | 13747725 | 5310741  | 157.970  | 35.958 #   |
| 37) L8 AR-1262-2            | 8.383  | 7.147 | 5979558  | 3808322  | 30.196   | 29.792     |
| 38) L8 AR-1262-3            | 8.708  | 7.671 | 4576230  | 738460   | 36.399   | 6.477 #    |
| 39) L8 AR-1262-4            | 8.757  | 7.732 | 1576500  | 7946785  | 16.904   | 43.178 #   |
| 40) L8 AR-1262-5            | 9.433  | 8.233 | 318198   | 298259   | 5.020    | 3.532 #    |
| 41) L9 AR-1268-1            | 8.708  | 7.671 | 4576230  | 738460   | 20.501   | 2.402 #    |

Data Path : Z:\pestpcbsrv\HPCHEM1\ECD\_P\Data\PP070925\  
 Data File : PP073608.D  
 Signal(s) : Signal #1: ECD1A.ch Signal #2: ECD2B.ch  
 Acq On : 08 Jul 2025 15:12  
 Operator : YP\AJ  
 Sample : AR1254CCC500  
 Misc :  
 ALS Vial : 6 Sample Multiplier: 1

Instrument :  
 ECD\_P  
 ClientSampleId :  
 AR1254CCC500

Integration File signal 1: autoint1.e  
 Integration File signal 2: autoint2.e  
 Quant Time: Jul 09 01:40:41 2025  
 Quant Method : Z:\pestpcbsrv\HPCHEM1\ECD\_P\methods\PP070825.M  
 Quant Title : GC EXTRACTABLES  
 QLast Update : Tue Jul 08 08:35:32 2025  
 Response via : Initial Calibration  
 Integrator: ChemStation

Volume Inj. : 2 µl  
 Signal #1 Phase : ZB-MR1 Signal #2 Phase: ZB-MR2  
 Signal #1 Info : 30Mx0.32mmx 0.50µ Signal #2 Info : 30M x 0.32mm x 0.25µm

|     | Compound     | RT#1  | RT#2  | Resp#1  | Resp#2  | ng/ml | ng/ml    |
|-----|--------------|-------|-------|---------|---------|-------|----------|
| 42) | L9 AR-1268-2 | 8.757 | 7.732 | 1576500 | 7946785 | 8.275 | 29.910 # |
| 43) | L9 AR-1268-3 | 9.016 | 7.937 | 1087038 | 167298  | 6.565 | 0.742 #  |
| 44) | L9 AR-1268-4 | 9.433 | 8.233 | 318198  | 298259  | 4.575 | 3.208 #  |
| 45) | L9 AR-1268-5 | 9.840 | 8.526 | 419051  | 884412  | 0.909 | 1.434 #  |

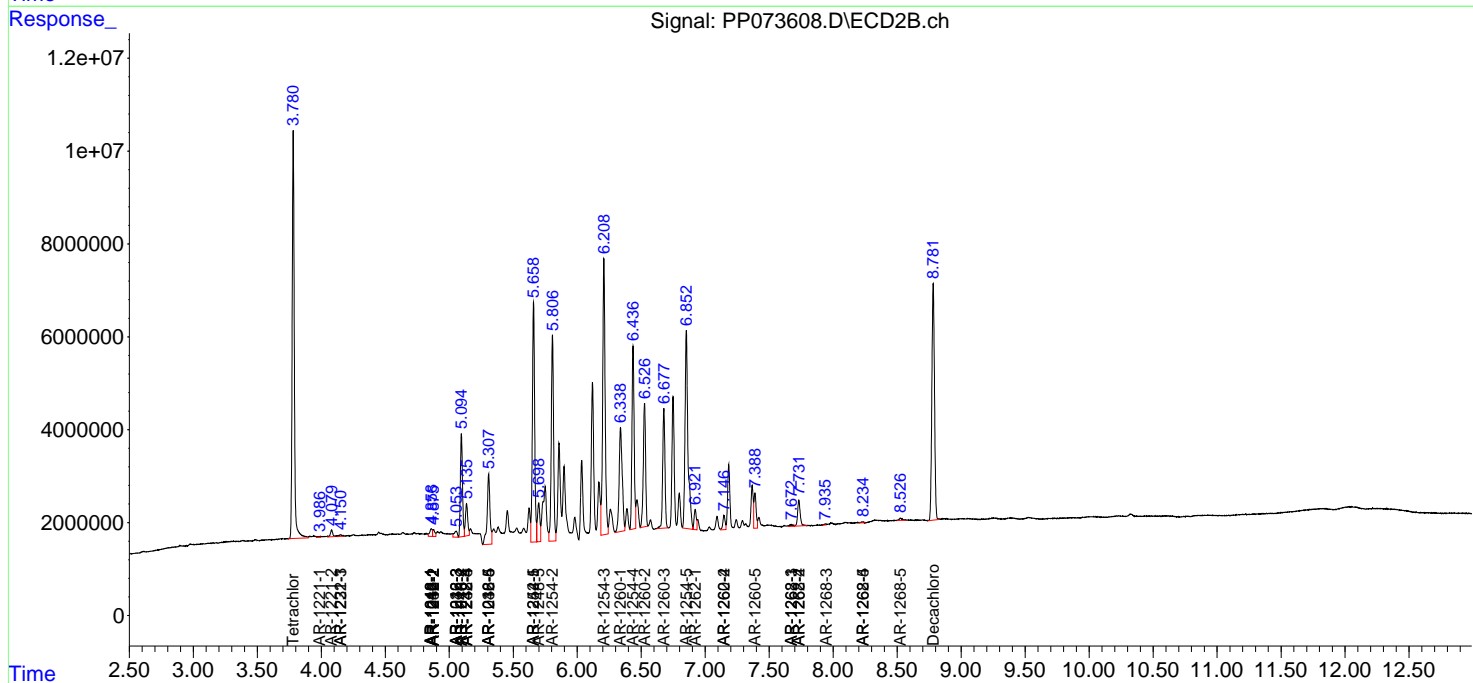
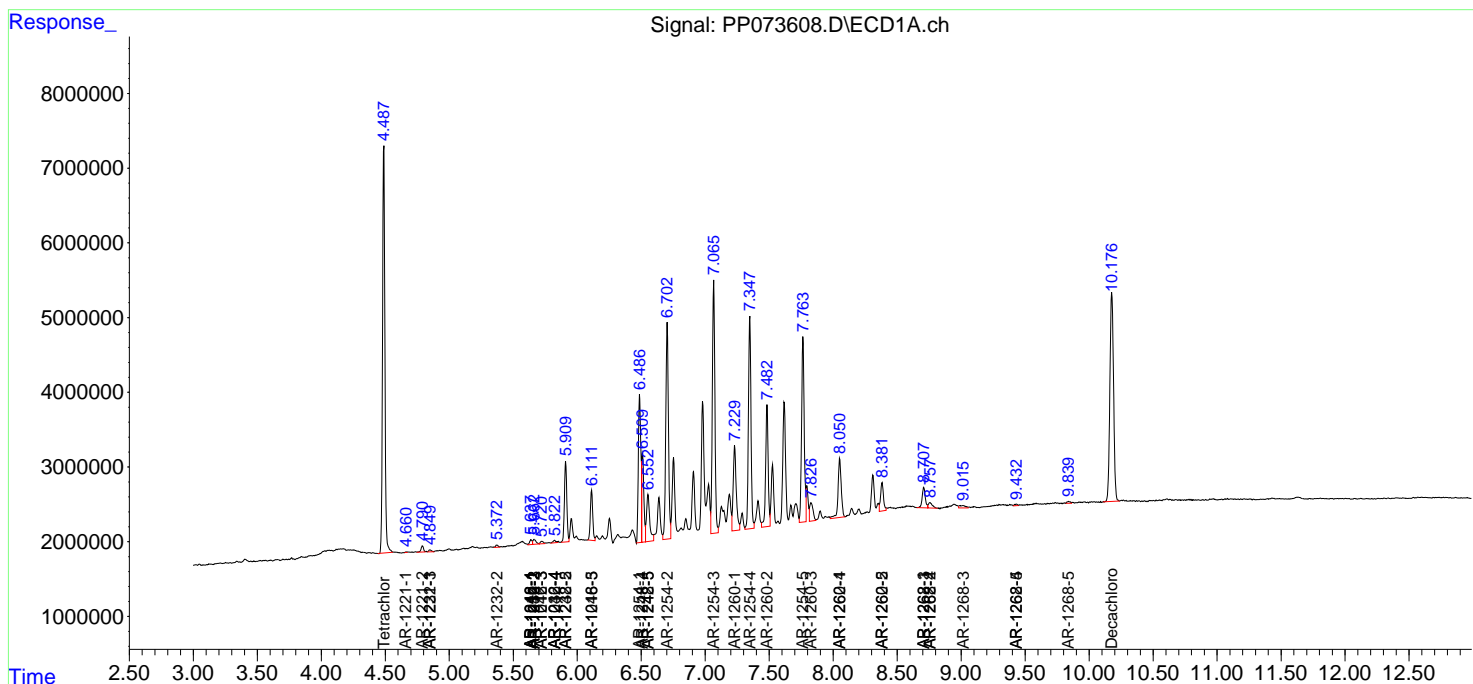
(f)=RT Delta > 1/2 Window (#)=Amounts differ by > 25% (m)=manual int.

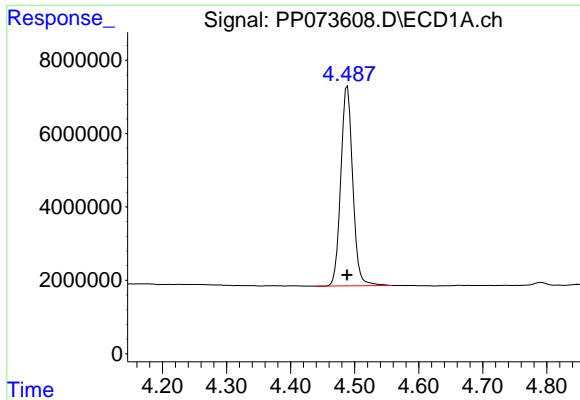
Data Path : Z:\pestpcbsrv\HPCHEM1\ECD\_P\Data\PP070925\  
 Data File : PP073608.D  
 Signal(s) : Signal #1: ECD1A.ch Signal #2: ECD2B.ch  
 Acq On : 08 Jul 2025 15:12  
 Operator : YP\AJ  
 Sample : AR1254CCC500  
 Misc :  
 ALS Vial : 6 Sample Multiplier: 1

Instrument :  
 ECD\_P  
 ClientSampleId :  
 AR1254CCC500

Integration File signal 1: autoint1.e  
 Integration File signal 2: autoint2.e  
 Quant Time: Jul 09 01:40:41 2025  
 Quant Method : Z:\pestpcbsrv\HPCHEM1\ECD\_P\methods\PP070825.M  
 Quant Title : GC EXTRACTABLES  
 QLast Update : Tue Jul 08 08:35:32 2025  
 Response via : Initial Calibration  
 Integrator: ChemStation

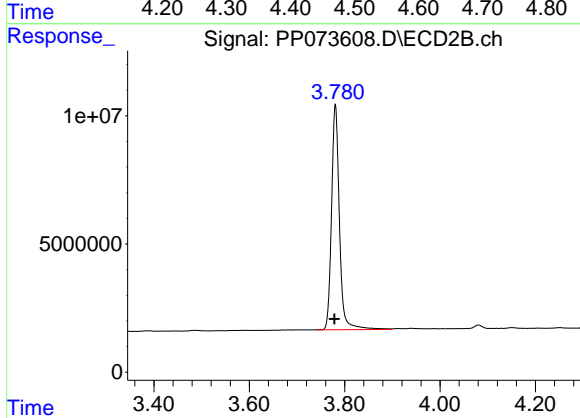
Volume Inj. : 2 µl  
 Signal #1 Phase : ZB-MR1 Signal #2 Phase: ZB-MR2  
 Signal #1 Info : 30Mx0.32mmx 0.50µ Signal #2 Info : 30M x 0.32mm x 0.25µm



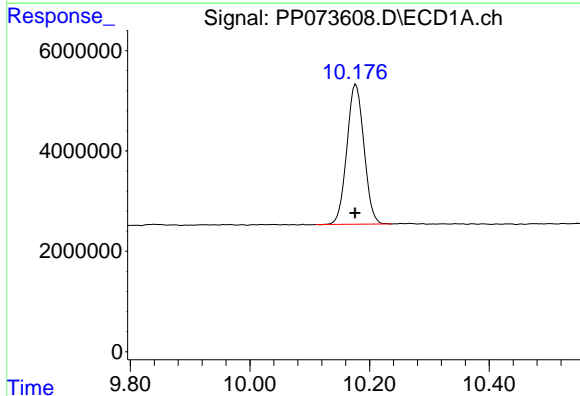


#1 Tetrachloro-m-xylene  
 R.T.: 4.489 min  
 Delta R.T.: 0.000 min  
 Response: 70554025  
 Conc: 51.52 ng/ml

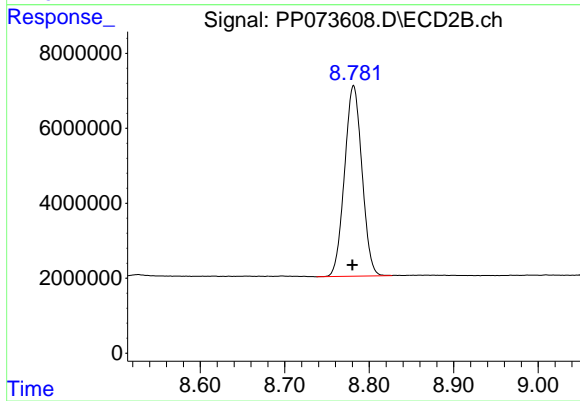
Instrument :  
 ECD\_P  
 ClientSampleId :  
 AR1254CCC500



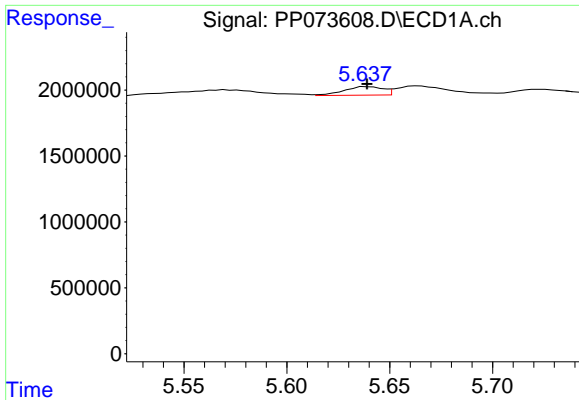
#1 Tetrachloro-m-xylene  
 R.T.: 3.781 min  
 Delta R.T.: 0.002 min  
 Response: 101192312  
 Conc: 54.93 ng/ml



#2 Decachlorobiphenyl  
 R.T.: 10.177 min  
 Delta R.T.: 0.001 min  
 Response: 55257484  
 Conc: 50.65 ng/ml



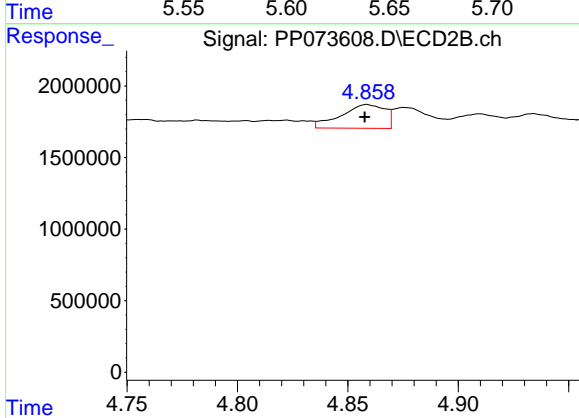
#2 Decachlorobiphenyl  
 R.T.: 8.781 min  
 Delta R.T.: 0.001 min  
 Response: 72850344  
 Conc: 55.06 ng/ml



#3 AR-1016-1

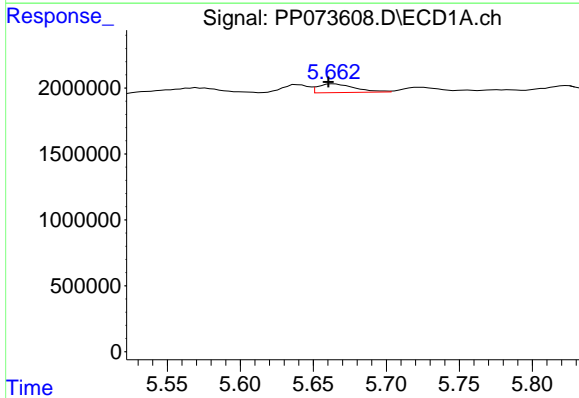
R.T.: 5.638 min  
 Delta R.T.: 0.000 min  
 Response: 851585  
 Conc: 17.92 ng/ml

Instrument :  
 ECD\_P  
 ClientSampleId :  
 AR1254CCC500



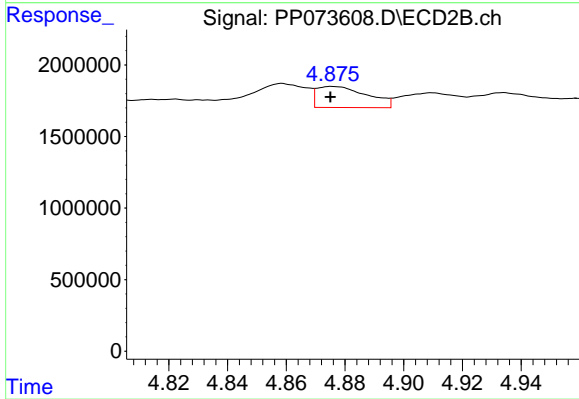
#3 AR-1016-1

R.T.: 4.859 min  
 Delta R.T.: 0.000 min  
 Response: 2309707  
 Conc: 33.88 ng/ml



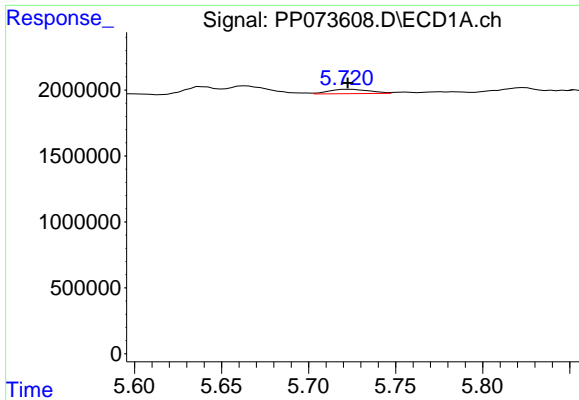
#4 AR-1016-2

R.T.: 5.664 min  
 Delta R.T.: 0.004 min  
 Response: 1158453  
 Conc: 16.27 ng/ml



#4 AR-1016-2

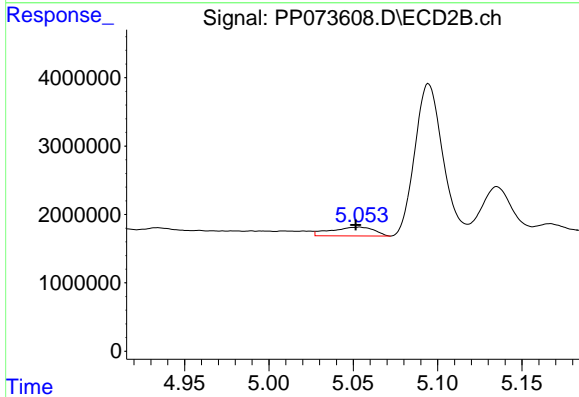
R.T.: 4.876 min  
 Delta R.T.: 0.000 min  
 Response: 1757297  
 Conc: 17.25 ng/ml



#5 AR-1016-3

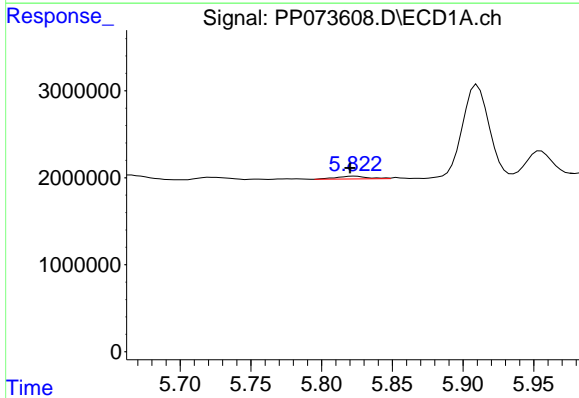
R.T.: 5.722 min  
 Delta R.T.: 0.000 min  
 Response: 534258  
 Conc: 12.24 ng/ml

Instrument :  
 ECD\_P  
 ClientSampleId :  
 AR1254CCC500



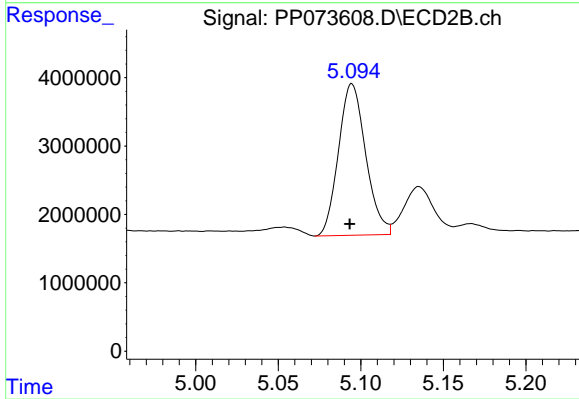
#5 AR-1016-3

R.T.: 5.054 min  
 Delta R.T.: 0.002 min  
 Response: 2286424  
 Conc: 42.26 ng/ml



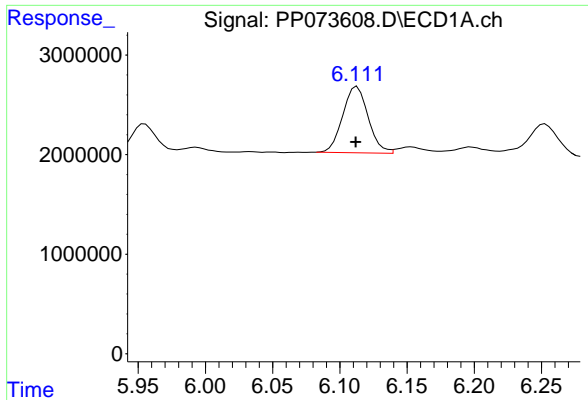
#6 AR-1016-4

R.T.: 5.824 min  
 Delta R.T.: 0.004 min  
 Response: 512867  
 Conc: 14.27 ng/ml



#6 AR-1016-4

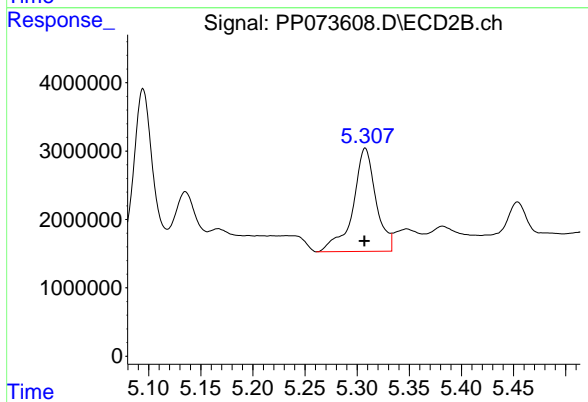
R.T.: 5.095 min  
 Delta R.T.: 0.001 min  
 Response: 25430115  
 Conc: 579.53 ng/ml



#7 AR-1016-5

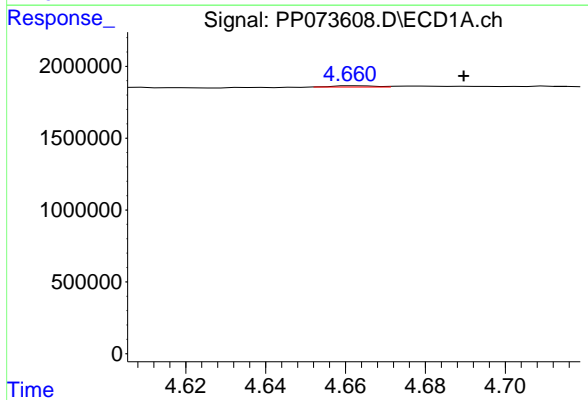
R.T.: 6.113 min  
 Delta R.T.: 0.001 min  
 Response: 8754047  
 Conc: 279.41 ng/ml

Instrument :  
 ECD\_P  
 ClientSampleId :  
 AR1254CCC500



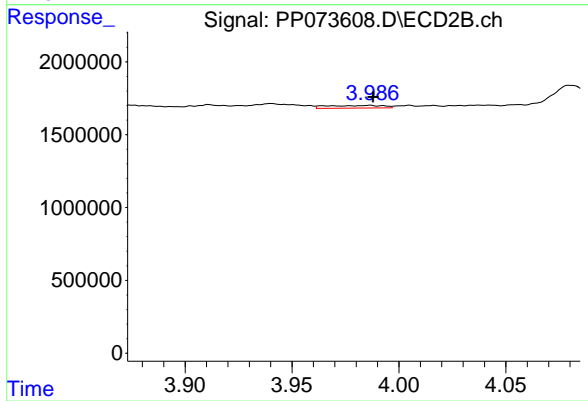
#7 AR-1016-5

R.T.: 5.308 min  
 Delta R.T.: 0.000 min  
 Response: 23179341  
 Conc: 424.67 ng/ml



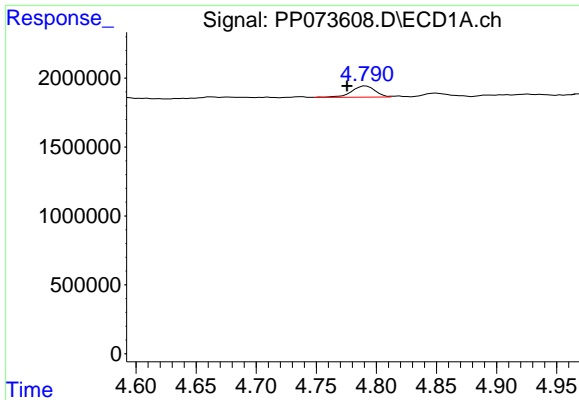
#8 AR-1221-1

R.T.: 4.663 min  
 Delta R.T.: -0.027 min  
 Response: 62480  
 Conc: 3.50 ng/ml



#8 AR-1221-1

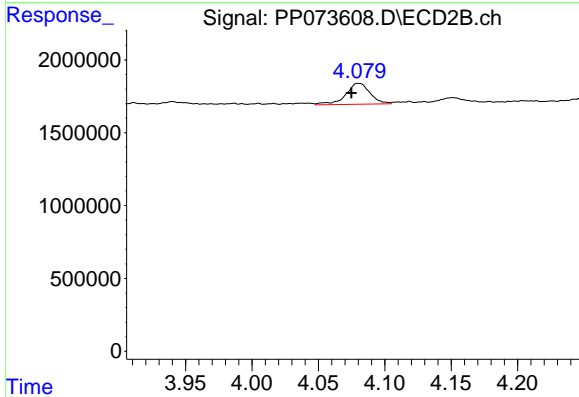
R.T.: 3.986 min  
 Delta R.T.: -0.002 min  
 Response: 328575  
 Conc: 12.15 ng/ml



#9 AR-1221-2

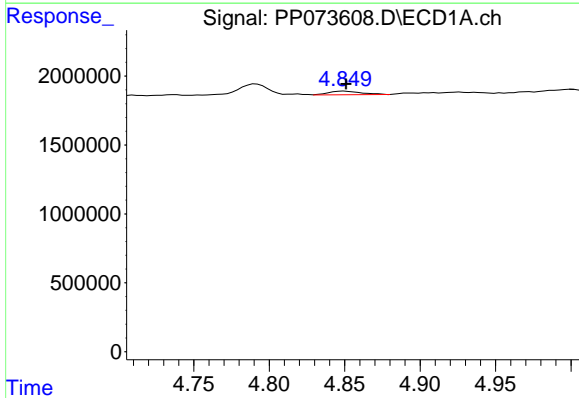
R.T.: 4.791 min  
 Delta R.T.: 0.016 min  
 Response: 1119711  
 Conc: 82.91 ng/ml

Instrument :  
 ECD\_P  
 ClientSampleId :  
 AR1254CCC500



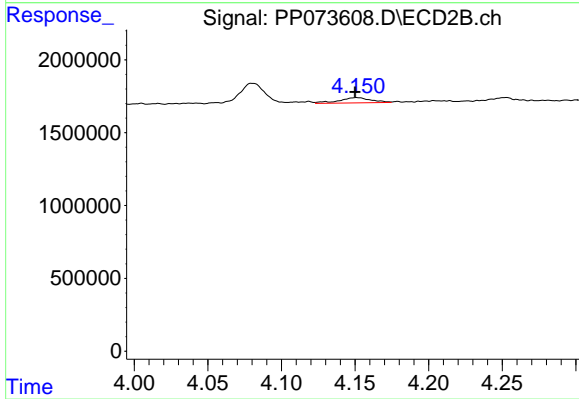
#9 AR-1221-2

R.T.: 4.080 min  
 Delta R.T.: 0.006 min  
 Response: 1828979  
 Conc: 89.83 ng/ml



#10 AR-1221-3

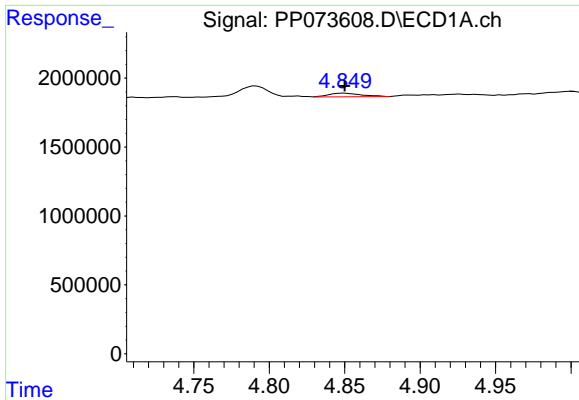
R.T.: 4.850 min  
 Delta R.T.: -0.001 min  
 Response: 393651  
 Conc: 9.46 ng/ml



#10 AR-1221-3

R.T.: 4.151 min  
 Delta R.T.: 0.001 min  
 Response: 546471  
 Conc: 8.89 ng/ml

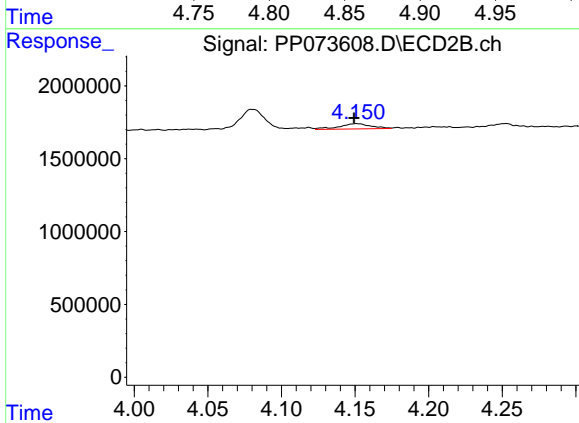




#11 AR-1232-1

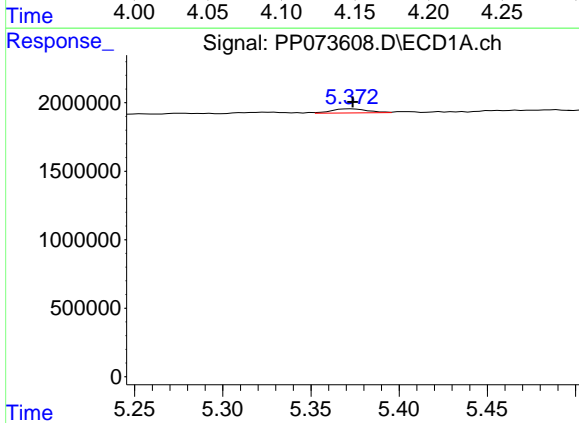
R.T.: 4.850 min  
 Delta R.T.: 0.000 min  
 Response: 393651  
 Conc: 12.06 ng/ml

Instrument :  
 ECD\_P  
 ClientSampleId :  
 AR1254CCC500



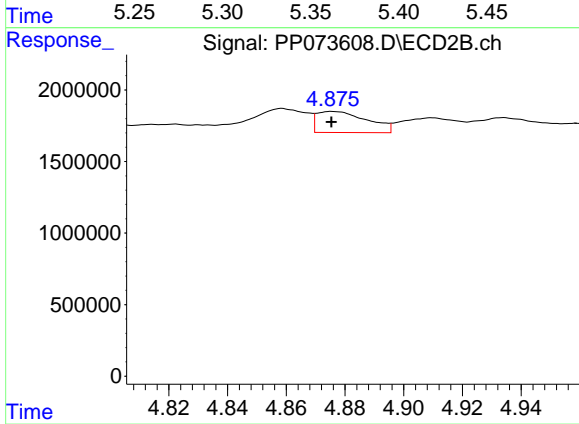
#11 AR-1232-1

R.T.: 4.151 min  
 Delta R.T.: 0.002 min  
 Response: 546471  
 Conc: 11.72 ng/ml



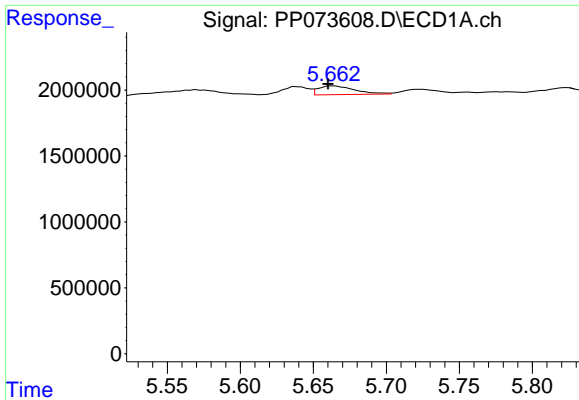
#12 AR-1232-2

R.T.: 5.373 min  
 Delta R.T.: 0.000 min  
 Response: 421342  
 Conc: 25.92 ng/ml



#12 AR-1232-2

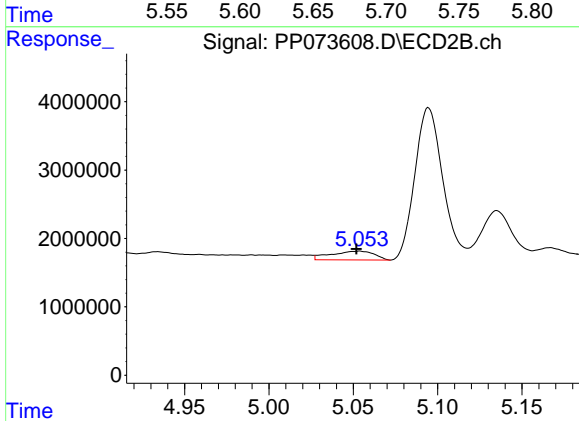
R.T.: 4.876 min  
 Delta R.T.: 0.000 min  
 Response: 1757297  
 Conc: 36.87 ng/ml



#13 AR-1232-3

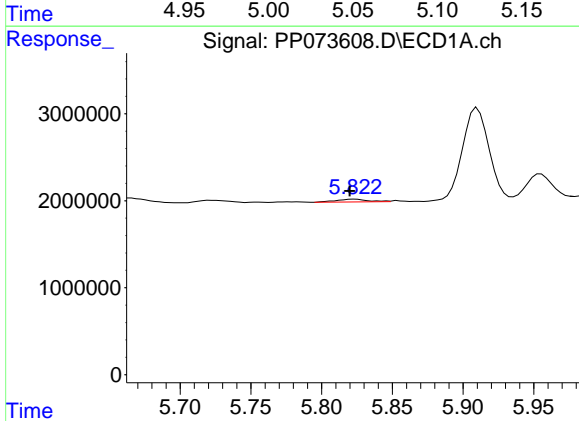
R.T.: 5.664 min  
 Delta R.T.: 0.004 min  
 Response: 1158453  
 Conc: 35.11 ng/ml

Instrument :  
 ECD\_P  
 ClientSampleId :  
 AR1254CCC500



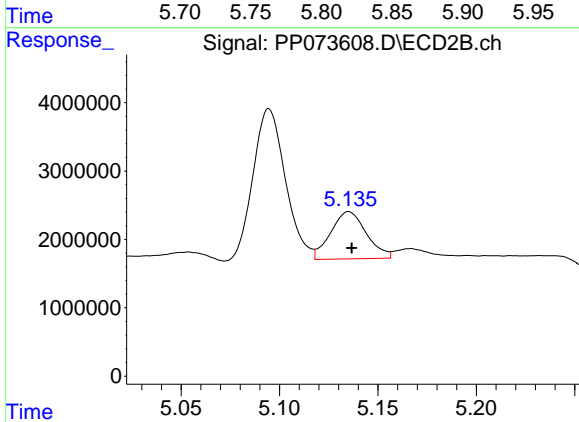
#13 AR-1232-3

R.T.: 5.054 min  
 Delta R.T.: 0.002 min  
 Response: 2286424  
 Conc: 91.35 ng/ml



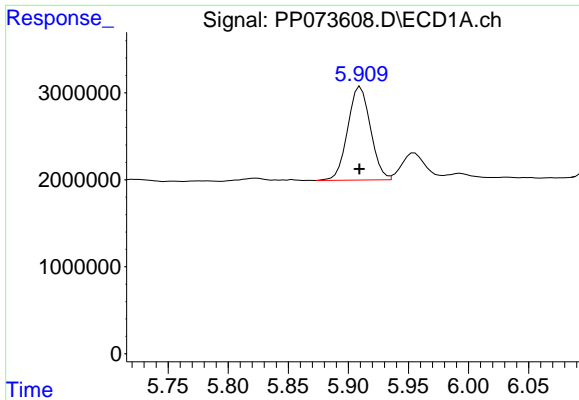
#14 AR-1232-4

R.T.: 5.824 min  
 Delta R.T.: 0.004 min  
 Response: 512867  
 Conc: 31.19 ng/ml



#14 AR-1232-4

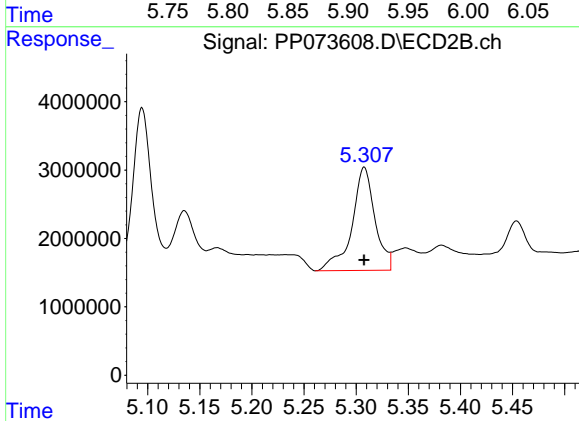
R.T.: 5.135 min  
 Delta R.T.: -0.001 min  
 Response: 8731528  
 Conc: 403.19 ng/ml



#15 AR-1232-5

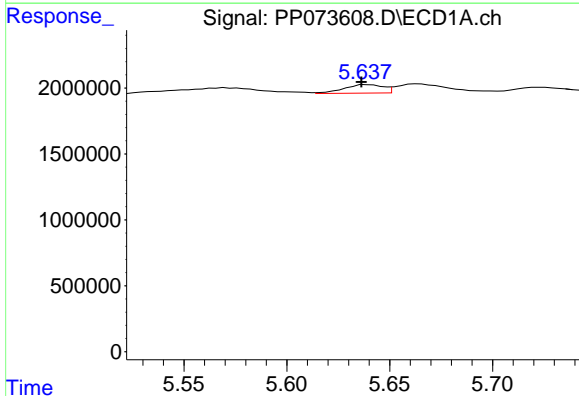
R.T.: 5.910 min  
 Delta R.T.: 0.000 min  
 Response: 14141619  
 Conc: 1337.86 ng/ml

Instrument :  
 ECD\_P  
 ClientSampleId :  
 AR1254CCC500



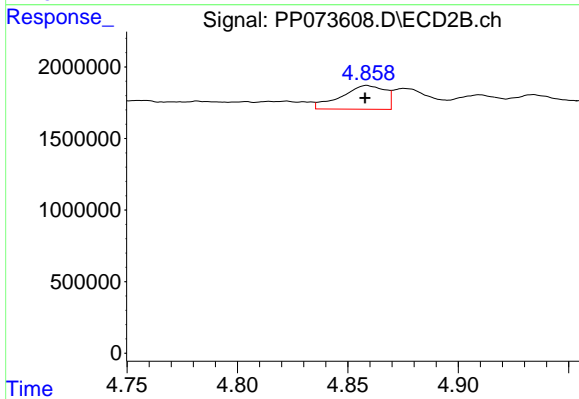
#15 AR-1232-5

R.T.: 5.308 min  
 Delta R.T.: 0.000 min  
 Response: 23179341  
 Conc: 1027.30 ng/ml



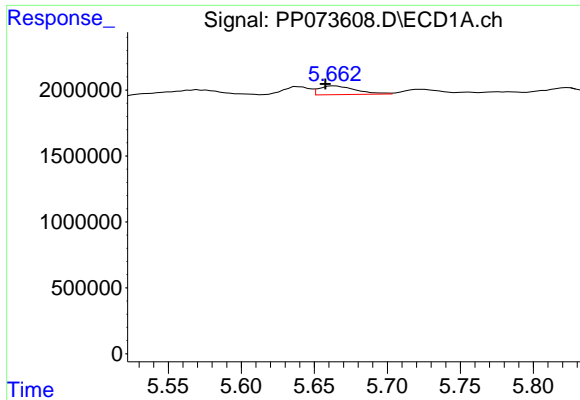
#16 AR-1242-1

R.T.: 5.638 min  
 Delta R.T.: 0.002 min  
 Response: 851585  
 Conc: 22.30 ng/ml



#16 AR-1242-1

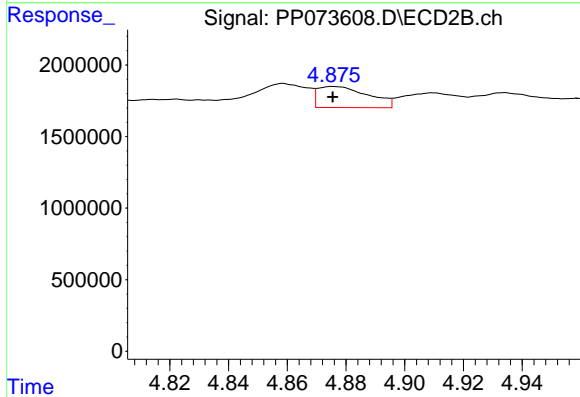
R.T.: 4.859 min  
 Delta R.T.: 0.000 min  
 Response: 2309707  
 Conc: 39.98 ng/ml



#17 AR-1242-2

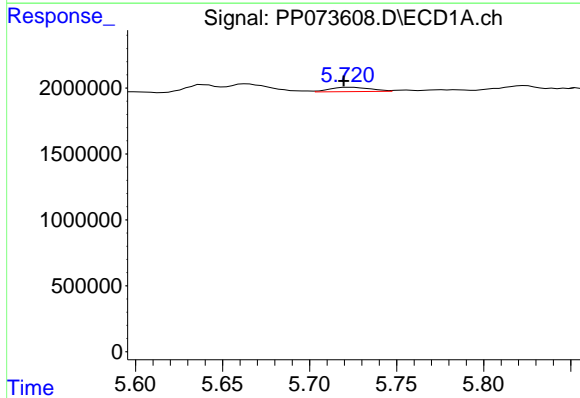
R.T.: 5.664 min  
 Delta R.T.: 0.006 min  
 Response: 1158453  
 Conc: 19.35 ng/ml

Instrument :  
 ECD\_P  
 ClientSampleId :  
 AR1254CCC500



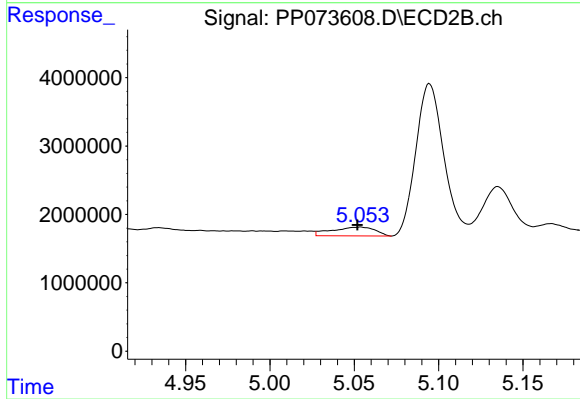
#17 AR-1242-2

R.T.: 4.876 min  
 Delta R.T.: 0.000 min  
 Response: 1757297  
 Conc: 20.33 ng/ml



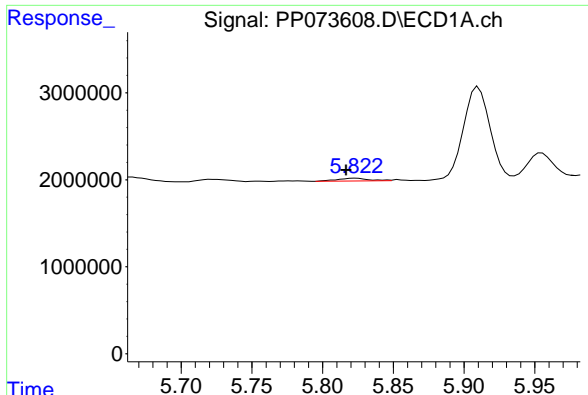
#18 AR-1242-3

R.T.: 5.722 min  
 Delta R.T.: 0.003 min  
 Response: 534258  
 Conc: 14.59 ng/ml



#18 AR-1242-3

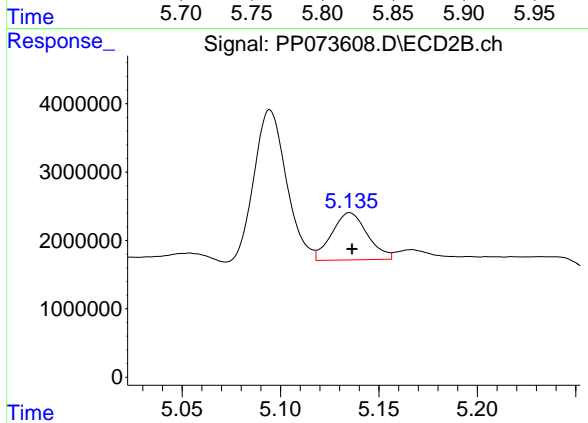
R.T.: 5.054 min  
 Delta R.T.: 0.002 min  
 Response: 2286424  
 Conc: 49.76 ng/ml



#19 AR-1242-4

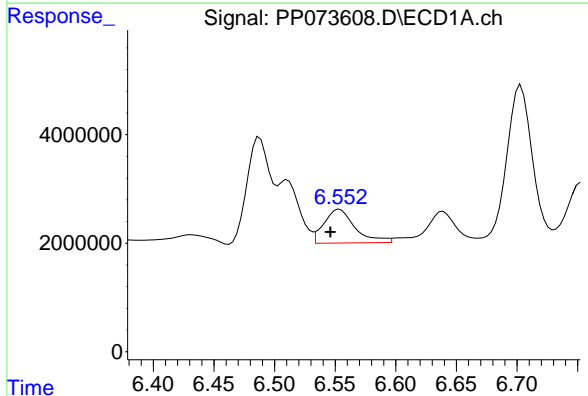
R.T.: 5.824 min  
 Delta R.T.: 0.007 min  
 Response: 512867  
 Conc: 15.96 ng/ml

Instrument :  
 ECD\_P  
 ClientSampleId :  
 AR1254CCC500



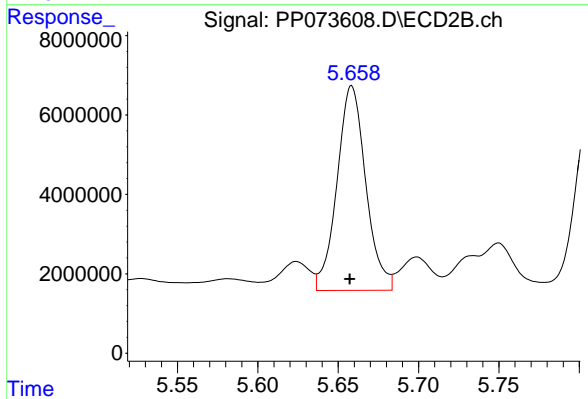
#19 AR-1242-4

R.T.: 5.135 min  
 Delta R.T.: -0.001 min  
 Response: 8731528  
 Conc: 197.26 ng/ml



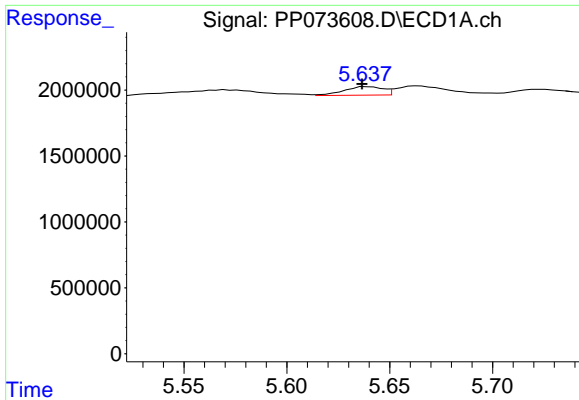
#20 AR-1242-5

R.T.: 6.554 min  
 Delta R.T.: 0.008 min  
 Response: 11119749  
 Conc: 339.67 ng/ml



#20 AR-1242-5

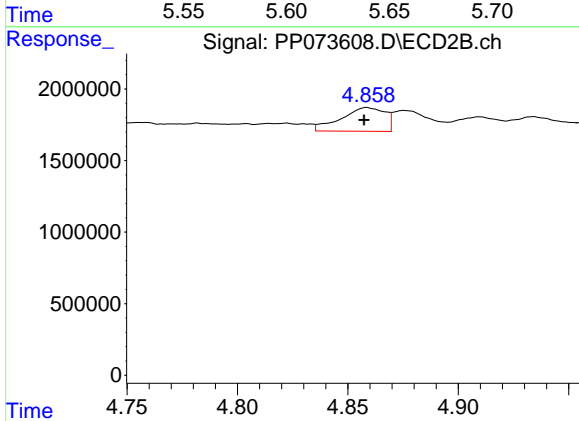
R.T.: 5.658 min  
 Delta R.T.: 0.001 min  
 Response: 64267711  
 Conc: 1163.38 ng/ml



#21 AR-1248-1

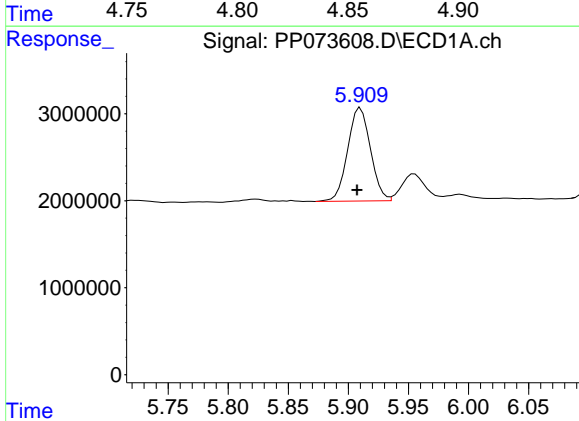
R.T.: 5.638 min  
 Delta R.T.: 0.002 min  
 Response: 851585  
 Conc: 27.59 ng/ml

Instrument :  
 ECD\_P  
 ClientSampleId :  
 AR1254CCC500



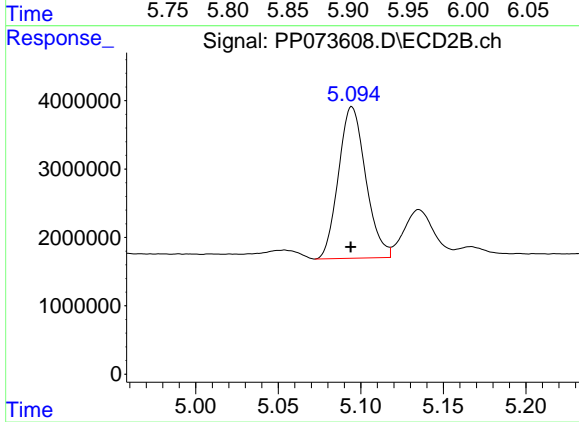
#21 AR-1248-1

R.T.: 4.859 min  
 Delta R.T.: 0.001 min  
 Response: 2309707  
 Conc: 51.45 ng/ml



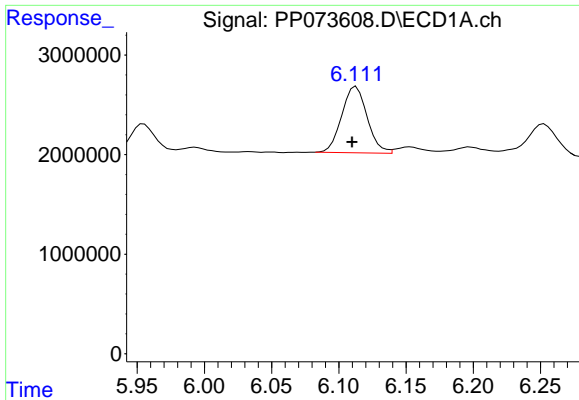
#22 AR-1248-2

R.T.: 5.910 min  
 Delta R.T.: 0.003 min  
 Response: 14141619  
 Conc: 354.22 ng/ml



#22 AR-1248-2

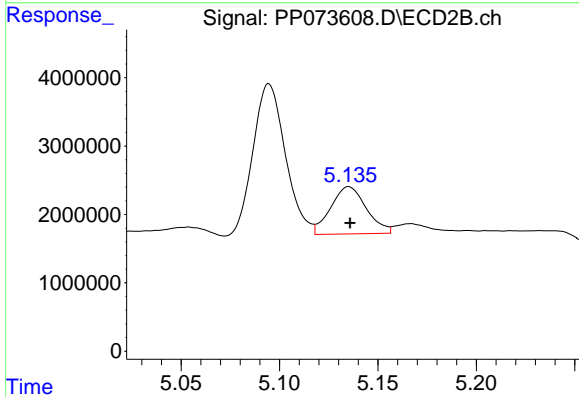
R.T.: 5.095 min  
 Delta R.T.: 0.000 min  
 Response: 25430115  
 Conc: 413.25 ng/ml



#23 AR-1248-3

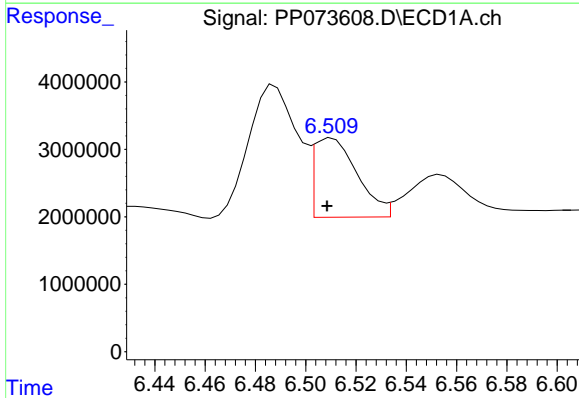
R.T.: 6.113 min  
 Delta R.T.: 0.003 min  
 Response: 8754047  
 Conc: 197.12 ng/ml

Instrument :  
 ECD\_P  
 ClientSampleId :  
 AR1254CCC500



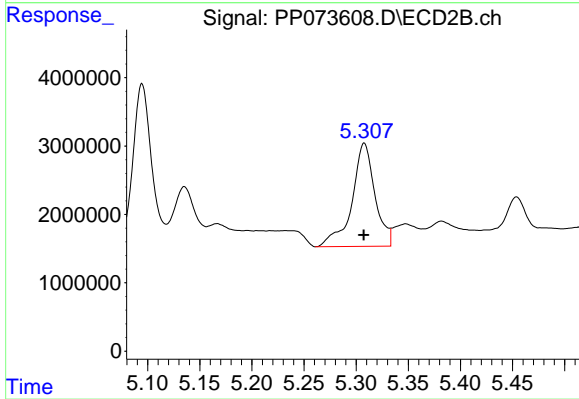
#23 AR-1248-3

R.T.: 5.135 min  
 Delta R.T.: 0.000 min  
 Response: 8731528  
 Conc: 136.29 ng/ml



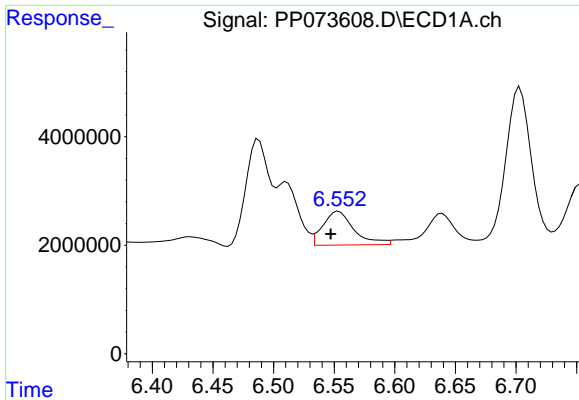
#24 AR-1248-4

R.T.: 6.511 min  
 Delta R.T.: 0.002 min  
 Response: 14029375  
 Conc: 254.71 ng/ml



#24 AR-1248-4

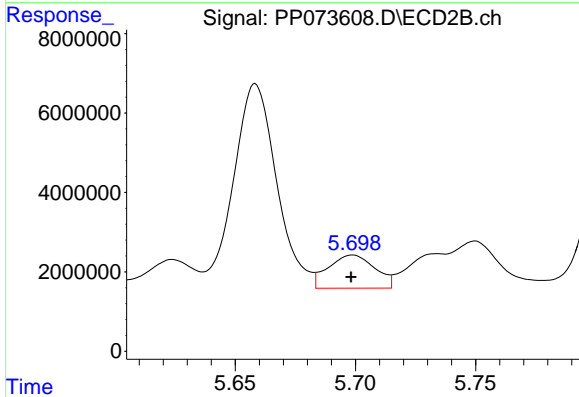
R.T.: 5.308 min  
 Delta R.T.: 0.000 min  
 Response: 23179341  
 Conc: 307.51 ng/ml



#25 AR-1248-5

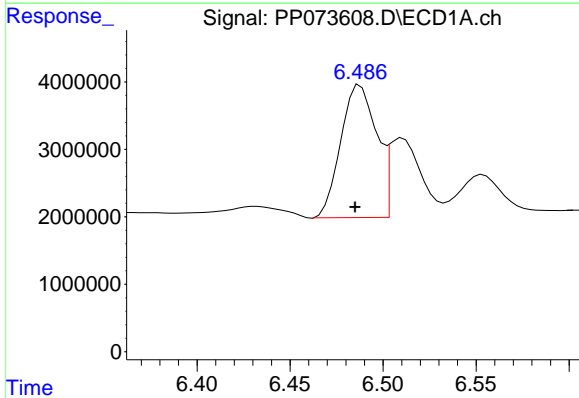
R.T.: 6.554 min  
 Delta R.T.: 0.007 min  
 Response: 11119749  
 Conc: 206.72 ng/ml

Instrument :  
 ECD\_P  
 ClientSampleId :  
 AR1254CCC500



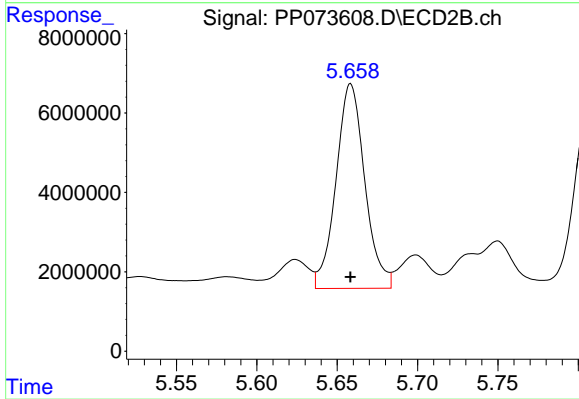
#25 AR-1248-5

R.T.: 5.699 min  
 Delta R.T.: 0.000 min  
 Response: 11284824  
 Conc: 151.29 ng/ml



#26 AR-1254-1

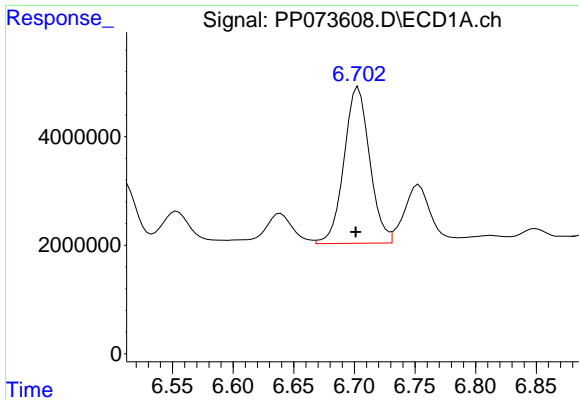
R.T.: 6.488 min  
 Delta R.T.: 0.003 min  
 Response: 26342356  
 Conc: 491.56 ng/ml



#26 AR-1254-1

R.T.: 5.658 min  
 Delta R.T.: 0.000 min  
 Response: 64267711  
 Conc: 553.89 ng/ml

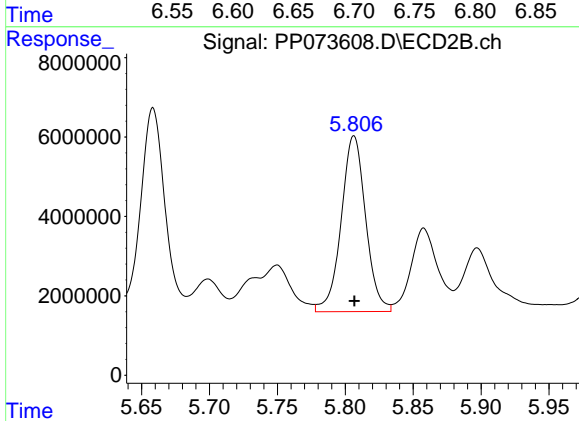




#27 AR-1254-2

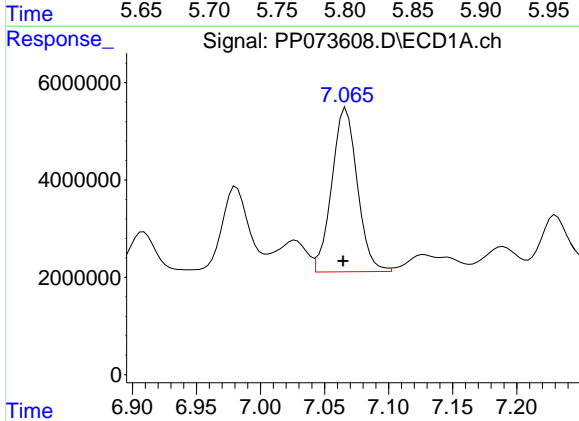
R.T.: 6.703 min  
 Delta R.T.: 0.002 min  
 Response: 42428887  
 Conc: 509.42 ng/ml

Instrument :  
 ECD\_P  
 ClientSampleId :  
 AR1254CCC500



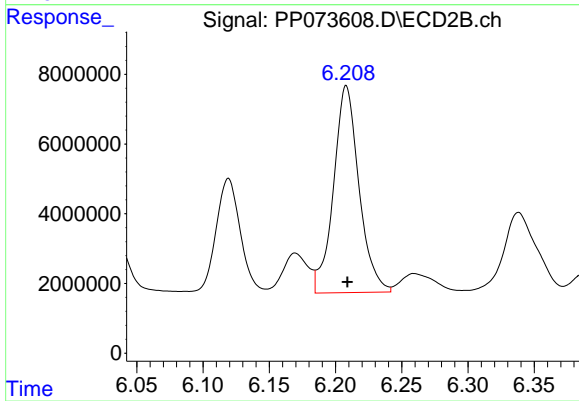
#27 AR-1254-2

R.T.: 5.806 min  
 Delta R.T.: 0.000 min  
 Response: 55597489  
 Conc: 552.53 ng/ml



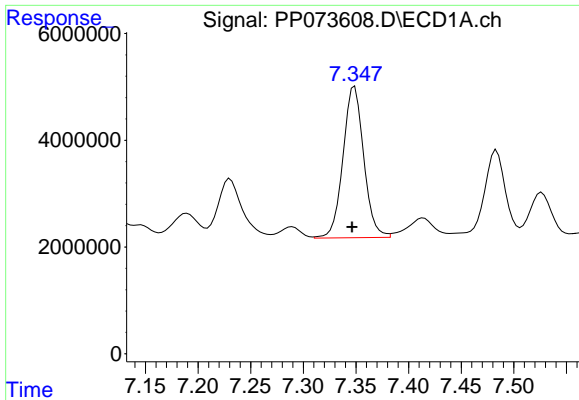
#28 AR-1254-3

R.T.: 7.067 min  
 Delta R.T.: 0.002 min  
 Response: 46657936  
 Conc: 528.21 ng/ml



#28 AR-1254-3

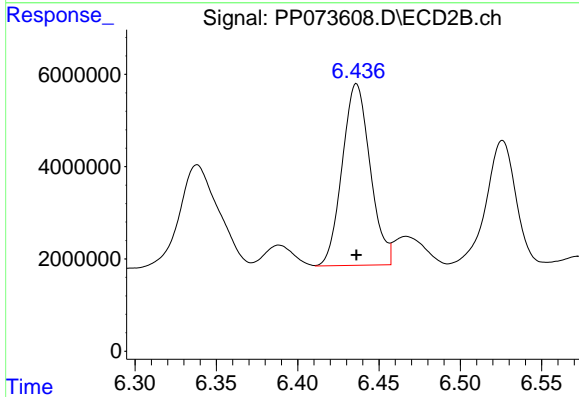
R.T.: 6.208 min  
 Delta R.T.: 0.000 min  
 Response: 79489425  
 Conc: 514.67 ng/ml



#29 AR-1254-4

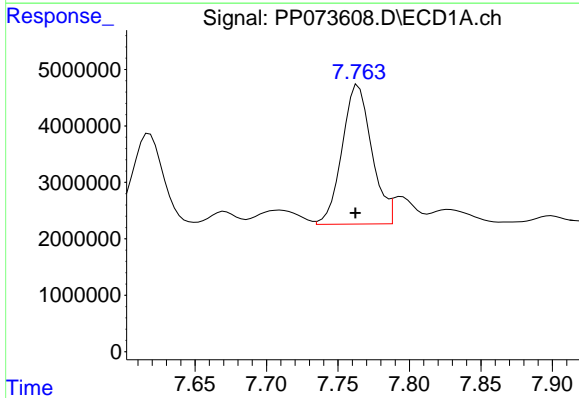
R.T.: 7.349 min  
 Delta R.T.: 0.003 min  
 Response: 39031178  
 Conc: 496.16 ng/ml

Instrument :  
 ECD\_P  
 ClientSampleId :  
 AR1254CCC500



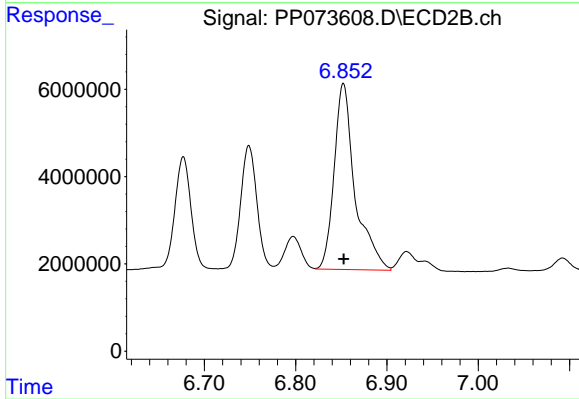
#29 AR-1254-4

R.T.: 6.436 min  
 Delta R.T.: 0.000 min  
 Response: 47048365  
 Conc: 497.55 ng/ml



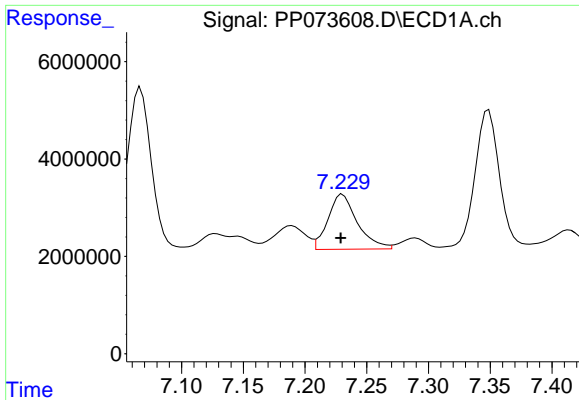
#30 AR-1254-5

R.T.: 7.764 min  
 Delta R.T.: 0.002 min  
 Response: 35516627  
 Conc: 482.04 ng/ml



#30 AR-1254-5

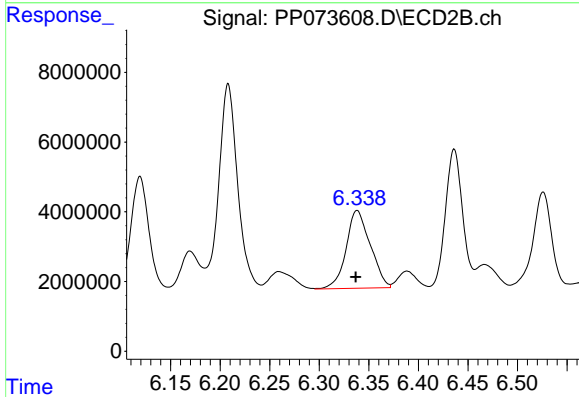
R.T.: 6.852 min  
 Delta R.T.: 0.000 min  
 Response: 67905293  
 Conc: 508.86 ng/ml



#31 AR-1260-1

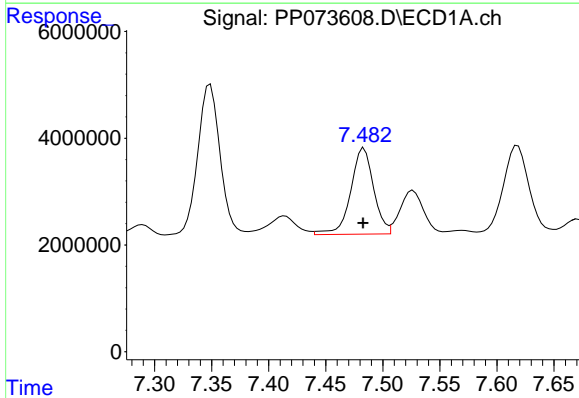
R.T.: 7.230 min  
 Delta R.T.: 0.001 min  
 Response: 18674173  
 Conc: 316.72 ng/ml

Instrument :  
 ECD\_P  
 ClientSampleId :  
 AR1254CCC500



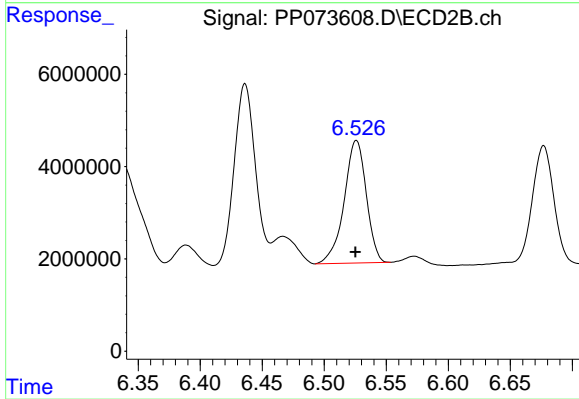
#31 AR-1260-1

R.T.: 6.338 min  
 Delta R.T.: 0.002 min  
 Response: 37744943  
 Conc: 386.89 ng/ml



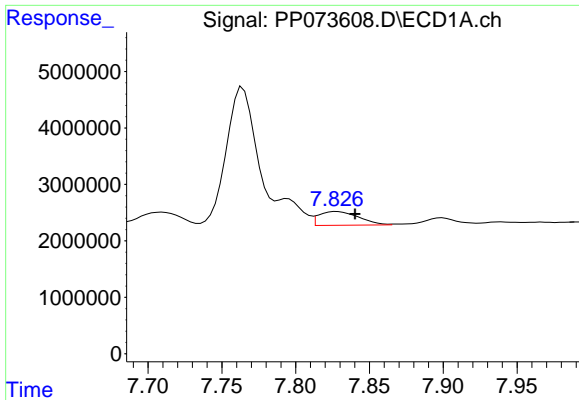
#32 AR-1260-2

R.T.: 7.483 min  
 Delta R.T.: 0.000 min  
 Response: 22593934  
 Conc: 235.75 ng/ml



#32 AR-1260-2

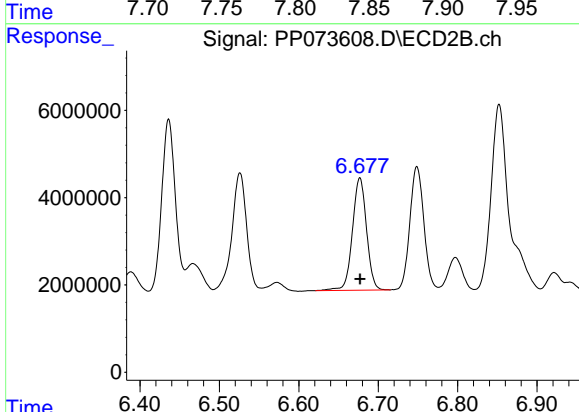
R.T.: 6.526 min  
 Delta R.T.: 0.000 min  
 Response: 33021219  
 Conc: 268.82 ng/ml



#33 AR-1260-3

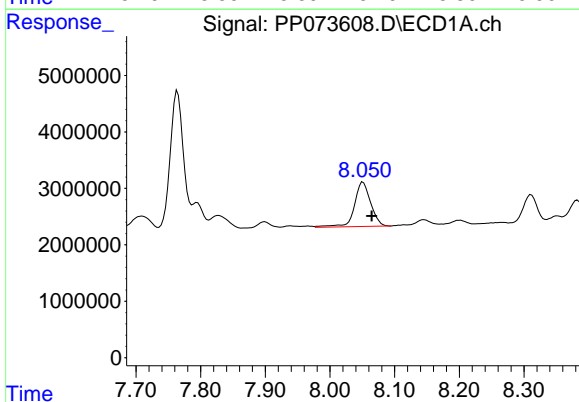
R.T.: 7.828 min  
 Delta R.T.: -0.013 min  
 Response: 4559294  
 Conc: 62.40 ng/ml

Instrument :  
 ECD\_P  
 ClientSampleId :  
 AR1254CCC500



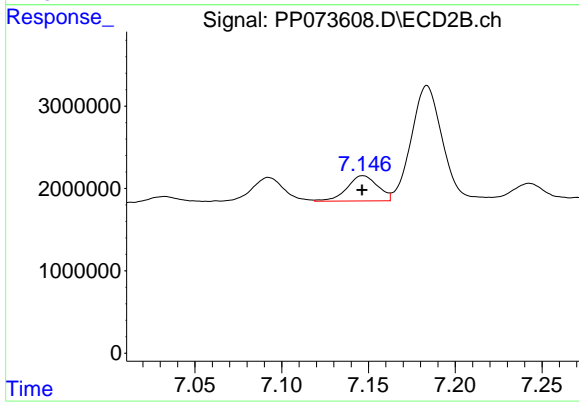
#33 AR-1260-3

R.T.: 6.677 min  
 Delta R.T.: 0.000 min  
 Response: 31782464  
 Conc: 290.35 ng/ml



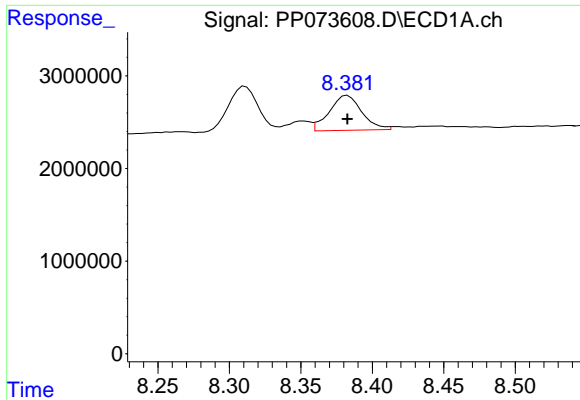
#34 AR-1260-4

R.T.: 8.051 min  
 Delta R.T.: -0.013 min  
 Response: 13747725  
 Conc: 210.53 ng/ml



#34 AR-1260-4

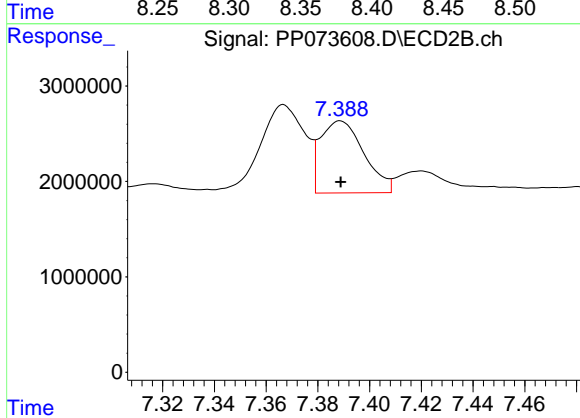
R.T.: 7.147 min  
 Delta R.T.: 0.000 min  
 Response: 3808322  
 Conc: 42.59 ng/ml



#35 AR-1260-5

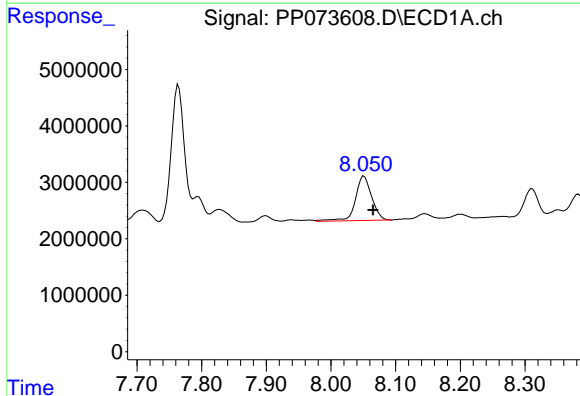
R.T.: 8.383 min  
 Delta R.T.: 0.000 min  
 Response: 5979558  
 Conc: 39.64 ng/ml

Instrument :  
 ECD\_P  
 ClientSampleId :  
 AR1254CCC500



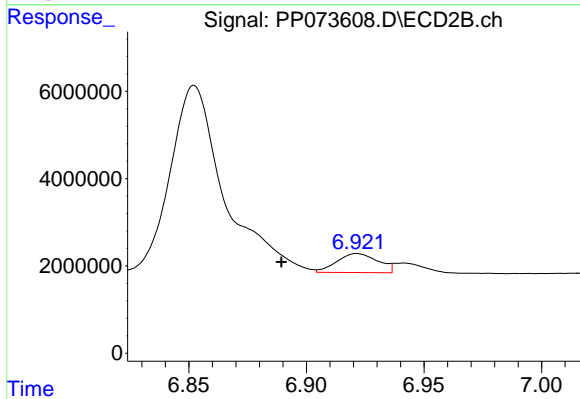
#35 AR-1260-5

R.T.: 7.389 min  
 Delta R.T.: 0.000 min  
 Response: 8825681  
 Conc: 39.27 ng/ml



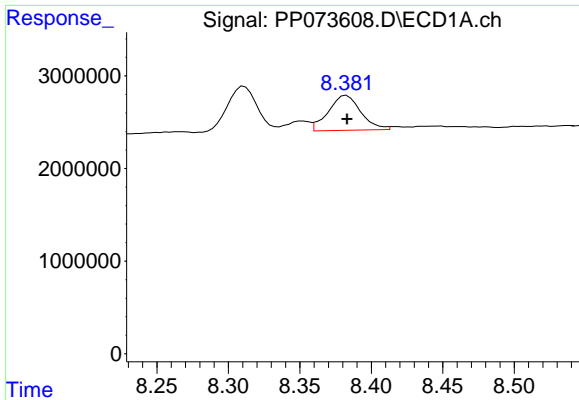
#36 AR-1262-1

R.T.: 8.051 min  
 Delta R.T.: -0.014 min  
 Response: 13747725  
 Conc: 157.97 ng/ml



#36 AR-1262-1

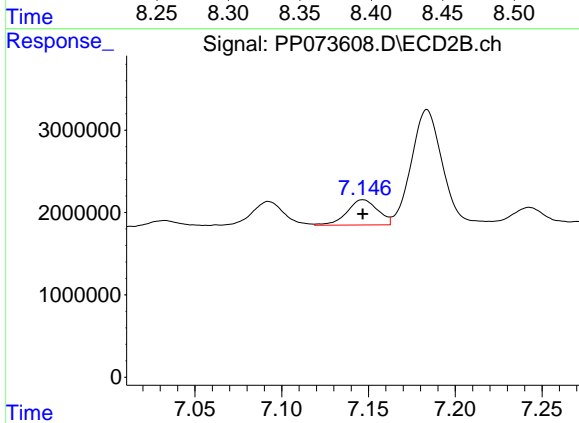
R.T.: 6.922 min  
 Delta R.T.: 0.032 min  
 Response: 5310741  
 Conc: 35.96 ng/ml



#37 AR-1262-2

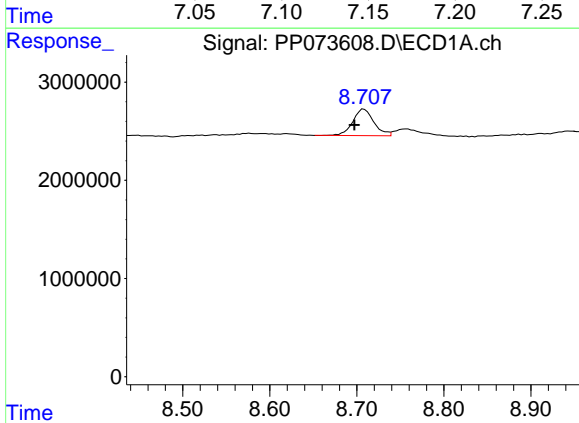
R.T.: 8.383 min  
 Delta R.T.: 0.000 min  
 Response: 5979558  
 Conc: 30.20 ng/ml

Instrument :  
 ECD\_P  
 ClientSampleId :  
 AR1254CCC500



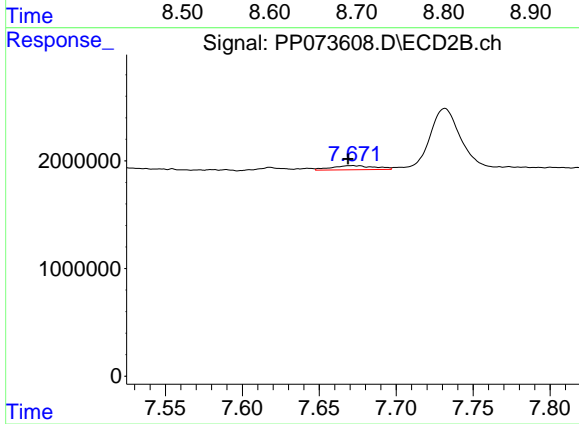
#37 AR-1262-2

R.T.: 7.147 min  
 Delta R.T.: 0.000 min  
 Response: 3808322  
 Conc: 29.79 ng/ml



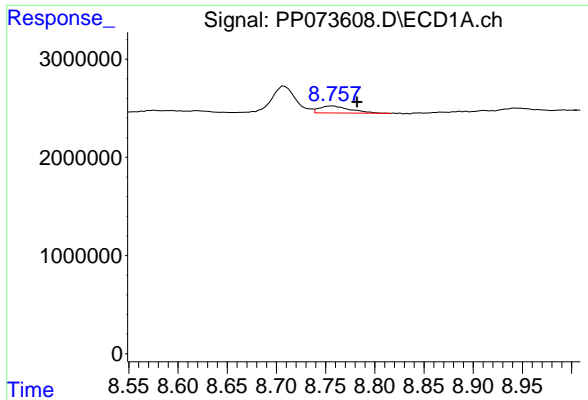
#38 AR-1262-3

R.T.: 8.708 min  
 Delta R.T.: 0.011 min  
 Response: 4576230  
 Conc: 36.40 ng/ml



#38 AR-1262-3

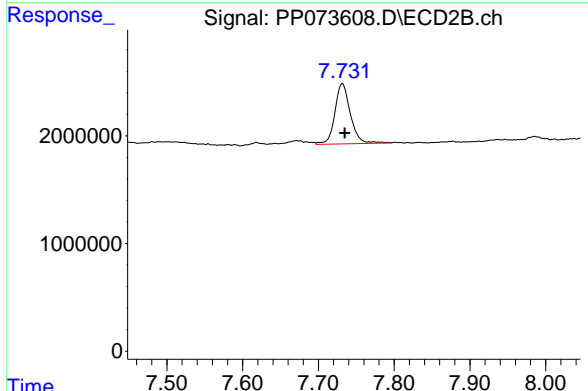
R.T.: 7.671 min  
 Delta R.T.: 0.002 min  
 Response: 738460  
 Conc: 6.48 ng/ml



#39 AR-1262-4

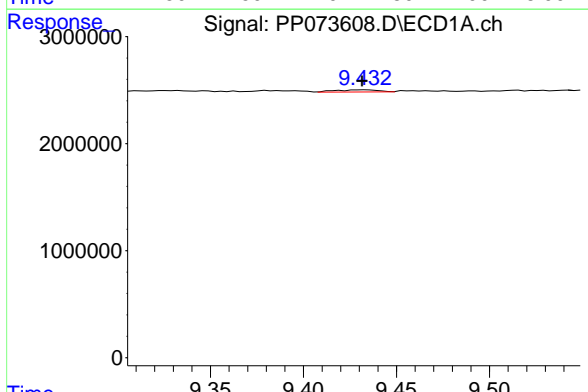
R.T.: 8.757 min  
 Delta R.T.: -0.025 min  
 Response: 1576500  
 Conc: 16.90 ng/ml

Instrument :  
 ECD\_P  
 ClientSampleId :  
 AR1254CCC500



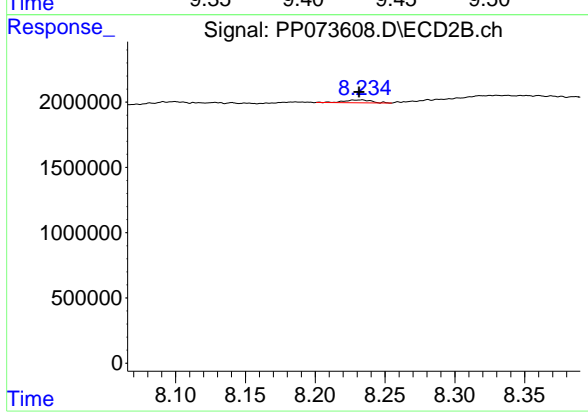
#39 AR-1262-4

R.T.: 7.732 min  
 Delta R.T.: -0.003 min  
 Response: 7946785  
 Conc: 43.18 ng/ml



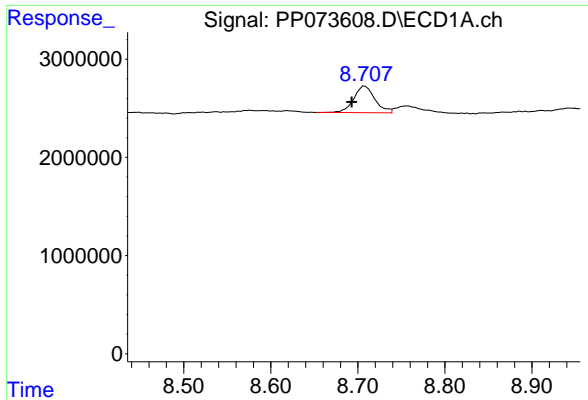
#40 AR-1262-5

R.T.: 9.433 min  
 Delta R.T.: 0.001 min  
 Response: 318198  
 Conc: 5.02 ng/ml



#40 AR-1262-5

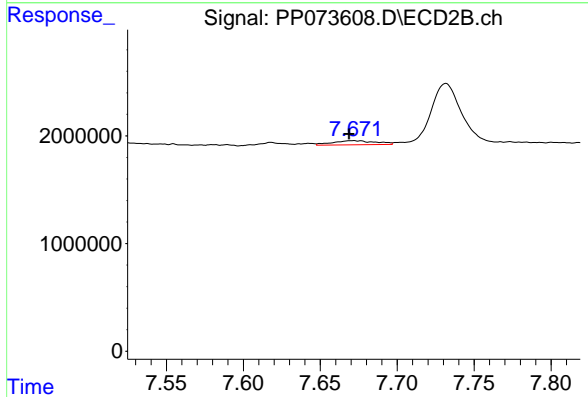
R.T.: 8.233 min  
 Delta R.T.: 0.002 min  
 Response: 298259  
 Conc: 3.53 ng/ml



#41 AR-1268-1

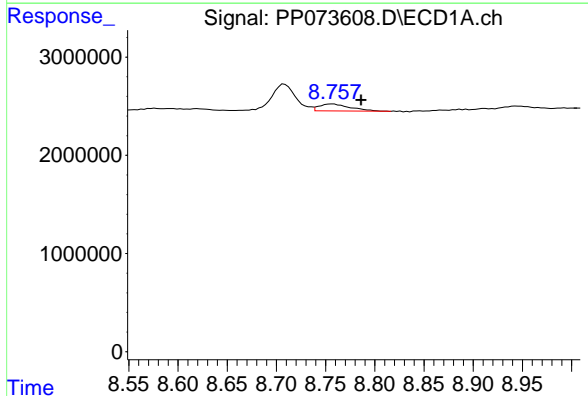
R.T.: 8.708 min  
 Delta R.T.: 0.015 min  
 Response: 4576230  
 Conc: 20.50 ng/ml

Instrument :  
 ECD\_P  
 ClientSampleId :  
 AR1254CCC500



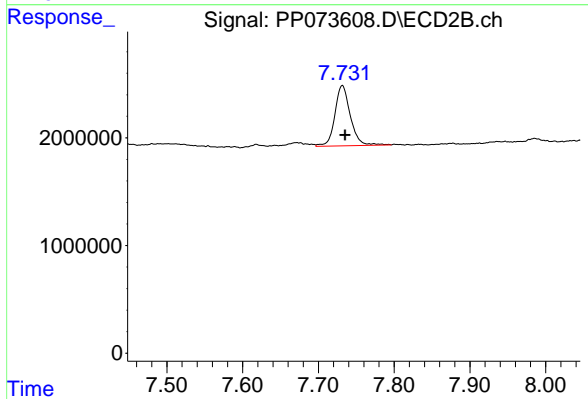
#41 AR-1268-1

R.T.: 7.671 min  
 Delta R.T.: 0.002 min  
 Response: 738460  
 Conc: 2.40 ng/ml



#42 AR-1268-2

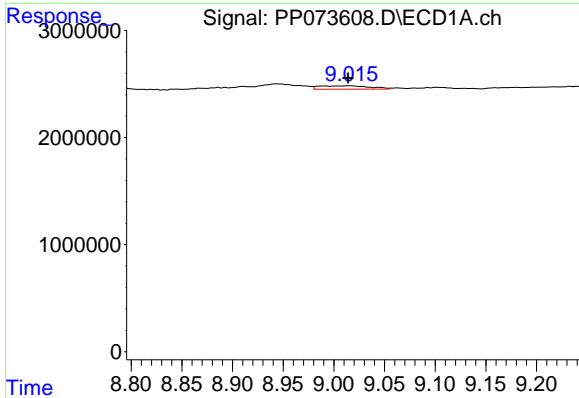
R.T.: 8.757 min  
 Delta R.T.: -0.029 min  
 Response: 1576500  
 Conc: 8.28 ng/ml



#42 AR-1268-2

R.T.: 7.732 min  
 Delta R.T.: -0.004 min  
 Response: 7946785  
 Conc: 29.91 ng/ml

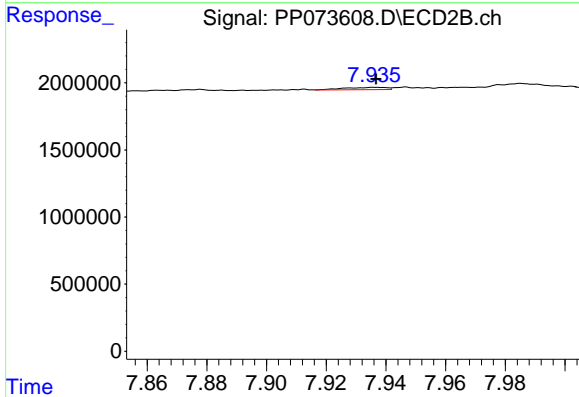




#43 AR-1268-3

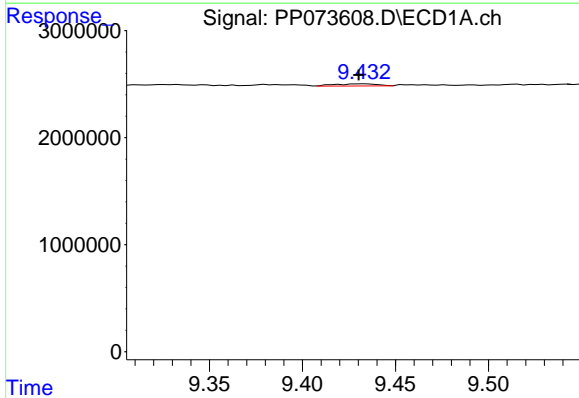
R.T.: 9.016 min  
 Delta R.T.: 0.002 min  
 Response: 1087038  
 Conc: 6.57 ng/ml

Instrument :  
 ECD\_P  
 ClientSampleId :  
 AR1254CCC500



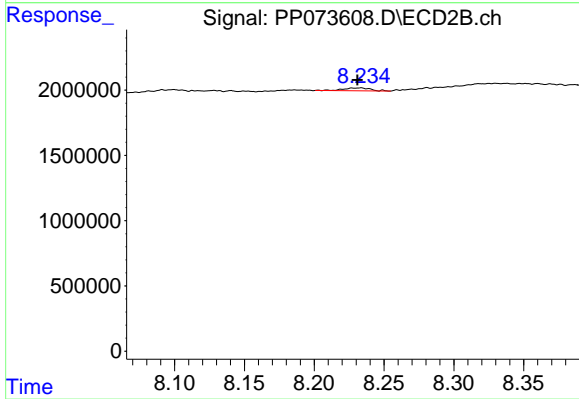
#43 AR-1268-3

R.T.: 7.937 min  
 Delta R.T.: 0.000 min  
 Response: 167298  
 Conc: 0.74 ng/ml



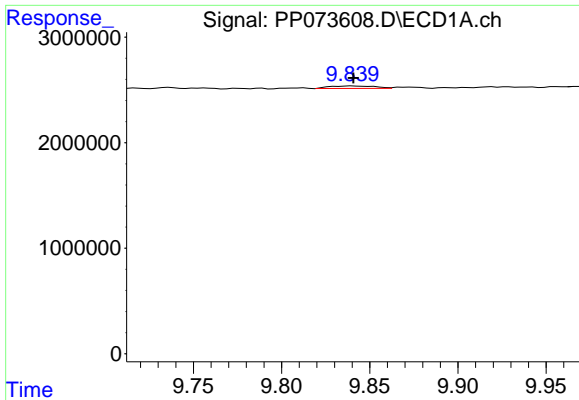
#44 AR-1268-4

R.T.: 9.433 min  
 Delta R.T.: 0.003 min  
 Response: 318198  
 Conc: 4.58 ng/ml



#44 AR-1268-4

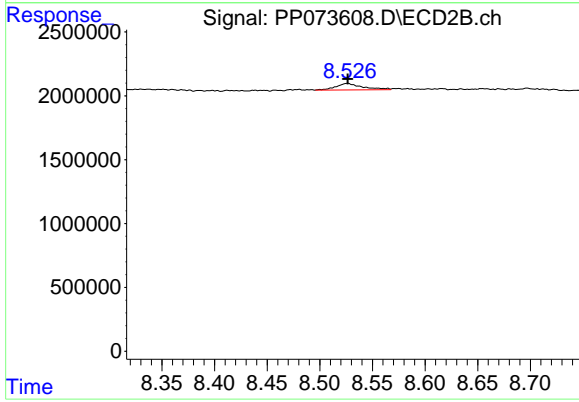
R.T.: 8.233 min  
 Delta R.T.: 0.002 min  
 Response: 298259  
 Conc: 3.21 ng/ml



#45 AR-1268-5

R.T.: 9.840 min  
 Delta R.T.: 0.000 min  
 Response: 419051  
 Conc: 0.91 ng/ml

Instrument :  
 ECD\_P  
 ClientSampleId :  
 AR1254CCC500



#45 AR-1268-5

R.T.: 8.526 min  
 Delta R.T.: 0.000 min  
 Response: 884412  
 Conc: 1.43 ng/ml