

Data Path : Z:\pestpcbsrv\HPCHEM1\ECD_P\Data\PP070925\
 Data File : PP073610.D
 Signal(s) : Signal #1: ECD1A.ch Signal #2: ECD2B.ch
 Acq On : 08 Jul 2025 15:45
 Operator : YP\AJ
 Sample : I.BLK
 Misc :
 ALS Vial : 2 Sample Multiplier: 1

Instrument :
 ECD_P
 ClientSampleId :
 I.BLK

Integration File signal 1: autoint1.e
 Integration File signal 2: autoint2.e
 Quant Time: Jul 09 01:41:18 2025
 Quant Method : Z:\pestpcbsrv\HPCHEM1\ECD_P\methods\PP070825.M
 Quant Title : GC EXTRACTABLES
 QLast Update : Tue Jul 08 08:35:32 2025
 Response via : Initial Calibration
 Integrator: ChemStation

Volume Inj. : 2 µl
 Signal #1 Phase : ZB-MR1 Signal #2 Phase: ZB-MR2
 Signal #1 Info : 30Mx0.32mmx 0.50µ Signal #2 Info : 30M x 0.32mm x 0.25µm

Compound	RT#1	RT#2	Resp#1	Resp#2	ng/ml	ng/ml
System Monitoring Compounds						
1) SA Tetrachlo...	4.488	3.780	23657525	32171603	17.274	17.463
2) SA Decachlor...	10.177	8.781	18090129	25243600	16.580	19.078
Target Compounds						
3) L1 AR-1016-1	5.627	4.855	314813	269626	6.626	3.955 #
4) L1 AR-1016-2	5.660	4.861	81919	567715	1.150	5.572 #
5) L1 AR-1016-3	5.737	5.044	181695	692942	4.161	12.807 #
6) L1 AR-1016-4	5.813	5.099	204665	1366253	5.694	31.136 #
7) L1 AR-1016-5	6.062f	5.309	11281	1313580	0.360	24.066 #
8) L2 AR-1221-1	4.695	3.989	26790	30747	1.499	1.137
9) L2 AR-1221-2	4.790	4.080	422213	650035	31.265	31.927
10) L2 AR-1221-3	4.859	4.153	76981	36247	1.850	0.590 #
11) L3 AR-1232-1	4.859	4.153	76981	36247	2.358	0.778 #
12) L3 AR-1232-2	5.380	4.861	58240	567715	3.583	11.912 #
13) L3 AR-1232-3	5.660	5.044	81919	692942	2.483	27.686 #
14) L3 AR-1232-4	5.813	5.134	204665	491142	12.445	22.679 #
15) L3 AR-1232-5	5.912	5.309	110927	1313580	10.494	58.217 #
16) L4 AR-1242-1	5.627	4.855	314813	269626	8.244	4.668 #
17) L4 AR-1242-2	5.660	4.861	81919	567715	1.368	6.567 #
18) L4 AR-1242-3	5.705	5.044	156864	692942	4.283	15.081 #
19) L4 AR-1242-4	5.813	5.134	204665	491142	6.369	11.096 #
20) L4 AR-1242-5	6.547	5.655	7430861	892185	226.987	16.150 #
21) L5 AR-1248-1	5.627	4.855	314813	269626	10.198	6.006 #
22) L5 AR-1248-2	5.912	5.099	110927	1366253	2.779	22.202 #
23) L5 AR-1248-3	6.062f	5.134	11281	491142	0.254	7.666 #
24) L5 AR-1248-4	6.488	5.309	4534326	1313580	82.322	17.427 #
25) L5 AR-1248-5	6.547	5.682	7430861	8334067	138.144	111.730
26) L6 AR-1254-1	6.488	5.655	4534326	892185	84.612	7.689 #
27) L6 AR-1254-2	6.691	5.763f	4806697	3662314	57.711	36.396 #
28) L6 AR-1254-3	7.065	6.213	14899810	1127141	168.680	7.298 #
29) L6 AR-1254-4	7.340	6.454	3467208	1041758	44.074	11.017 #
30) L6 AR-1254-5	7.772	6.871	677892	172856	9.201	1.295 #
31) L7 AR-1260-1	7.221	6.344	1002385	421595	17.001	4.321 #
32) L7 AR-1260-2	7.497	6.510	4309329	8736094	44.964	71.119 #
33) L7 AR-1260-3	7.851	6.678	1358818	21250	18.596	0.194 #
34) L7 AR-1260-4	8.064	7.152	413509	285572	6.332	3.194 #
35) L7 AR-1260-5	8.342f	7.384	298885	158657	1.981	0.706 #
36) L8 AR-1262-1	8.064	6.888	413509	54165	4.751	0.367 #
37) L8 AR-1262-2	8.342f	7.152	298885	285572	1.509	2.234 #
38) L8 AR-1262-3	8.693	7.638	199209	110276	1.584	0.967 #
39) L8 AR-1262-4	8.769	7.764	120171	84151	1.289	0.457 #
40) L8 AR-1262-5	9.437	8.198	79221	27400	1.250	0.325 #
41) L9 AR-1268-1	8.693	7.638	199209	110276	0.892	0.359 #

Data Path : Z:\pestpcbsrv\HPCHEM1\ECD_P\Data\PP070925\
 Data File : PP073610.D
 Signal(s) : Signal #1: ECD1A.ch Signal #2: ECD2B.ch
 Acq On : 08 Jul 2025 15:45
 Operator : YP\AJ
 Sample : I.BLK
 Misc :
 ALS Vial : 2 Sample Multiplier: 1

Instrument :
 ECD_P
 ClientSampleId :
 I.BLK

Integration File signal 1: autoint1.e
 Integration File signal 2: autoint2.e
 Quant Time: Jul 09 01:41:18 2025
 Quant Method : Z:\pestpcbsrv\HPCHEM1\ECD_P\methods\PP070825.M
 Quant Title : GC EXTRACTABLES
 QLast Update : Tue Jul 08 08:35:32 2025
 Response via : Initial Calibration
 Integrator: ChemStation

Volume Inj. : 2 µl
 Signal #1 Phase : ZB-MR1 Signal #2 Phase: ZB-MR2
 Signal #1 Info : 30Mx0.32mmx 0.50µ Signal #2 Info : 30M x 0.32mm x 0.25µm

	Compound	RT#1	RT#2	Resp#1	Resp#2	ng/ml	ng/ml
42)	L9 AR-1268-2	8.769	7.764	120171	84151	0.631	0.317 #
43)	L9 AR-1268-3	9.012	7.939	586255	208791	3.541	0.926 #
44)	L9 AR-1268-4	9.437	8.198	79221	27400	1.139	0.295 #
45)	L9 AR-1268-5	9.834	8.527	213950	401130	0.464	0.651 #

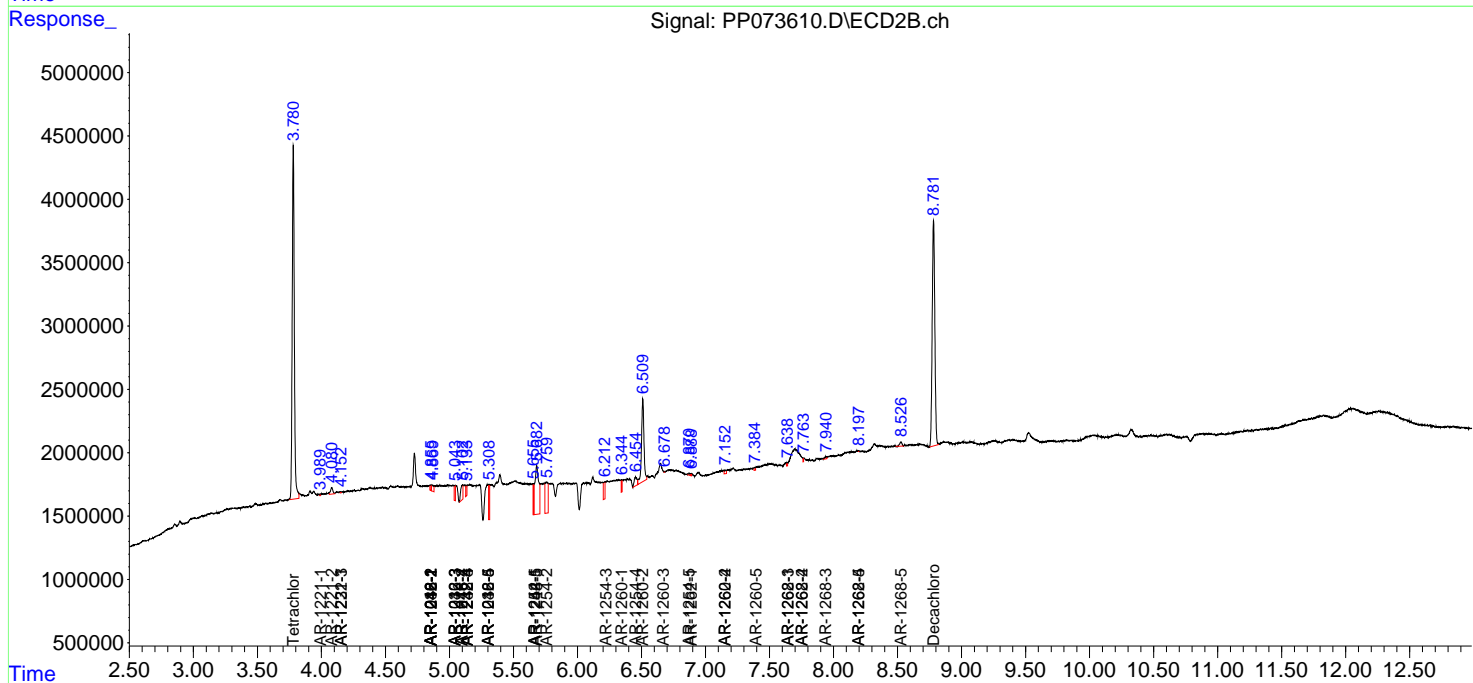
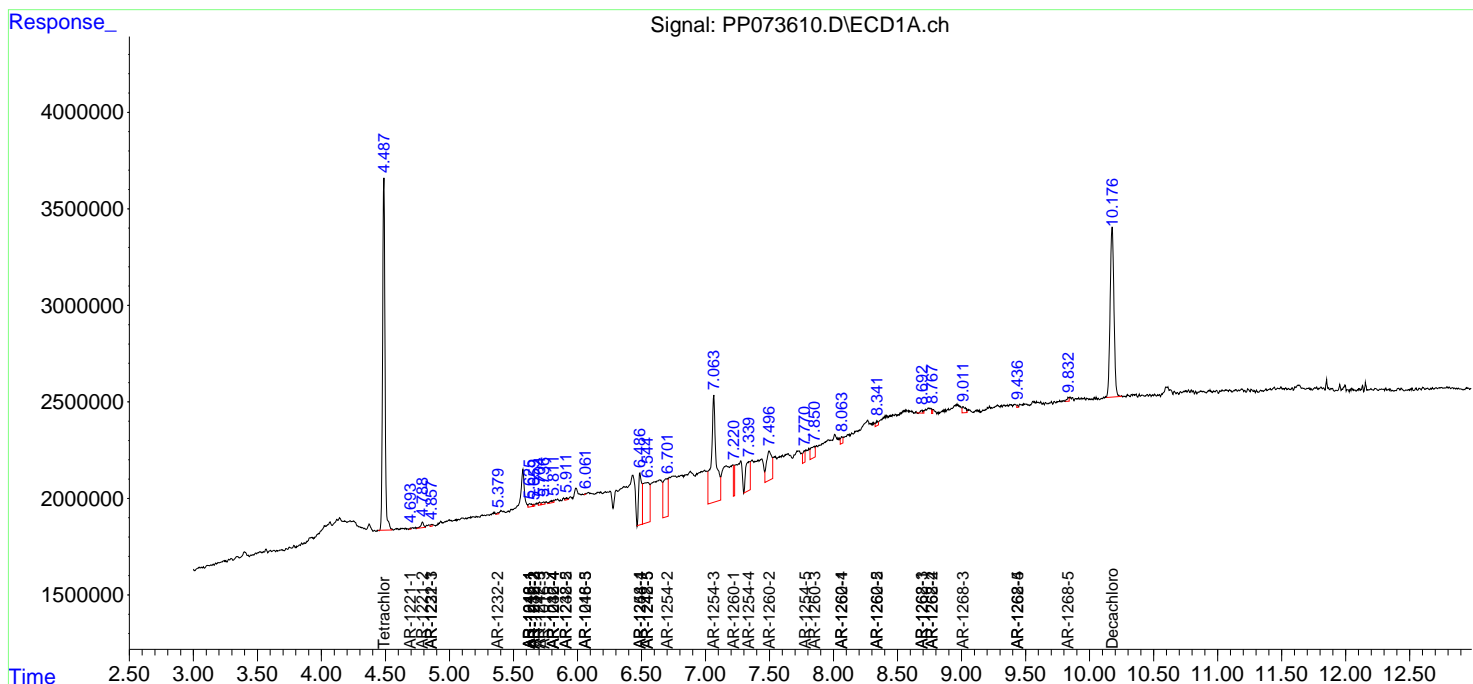
(f)=RT Delta > 1/2 Window (#)=Amounts differ by > 25% (m)=manual int.

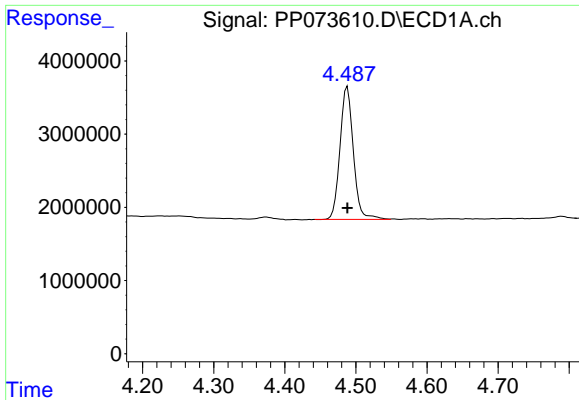
Data Path : Z:\pestpcbsrv\HPCHEM1\ECD_P\Data\PP070925\
 Data File : PP073610.D
 Signal(s) : Signal #1: ECD1A.ch Signal #2: ECD2B.ch
 Acq On : 08 Jul 2025 15:45
 Operator : YP\AJ
 Sample : I.BLK
 Misc :
 ALS Vial : 2 Sample Multiplier: 1

Instrument :
 ECD_P
 ClientSampleId :
 I.BLK

Integration File signal 1: autoint1.e
 Integration File signal 2: autoint2.e
 Quant Time: Jul 09 01:41:18 2025
 Quant Method : Z:\pestpcbsrv\HPCHEM1\ECD_P\methods\PP070825.M
 Quant Title : GC EXTRACTABLES
 QLast Update : Tue Jul 08 08:35:32 2025
 Response via : Initial Calibration
 Integrator: ChemStation

Volume Inj. : 2 µl
 Signal #1 Phase : ZB-MR1 Signal #2 Phase: ZB-MR2
 Signal #1 Info : 30Mx0.32mmx 0.50µ Signal #2 Info : 30M x 0.32mm x 0.25µm

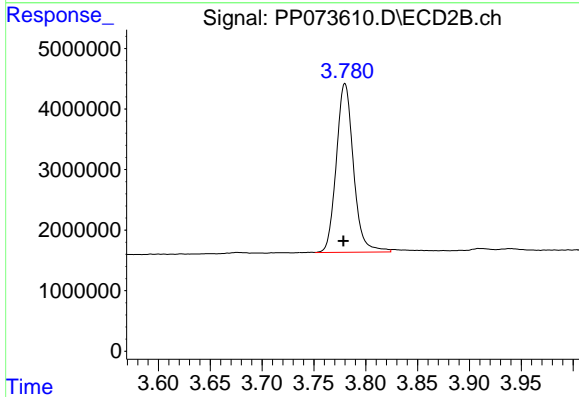




#1 Tetrachloro-m-xylene

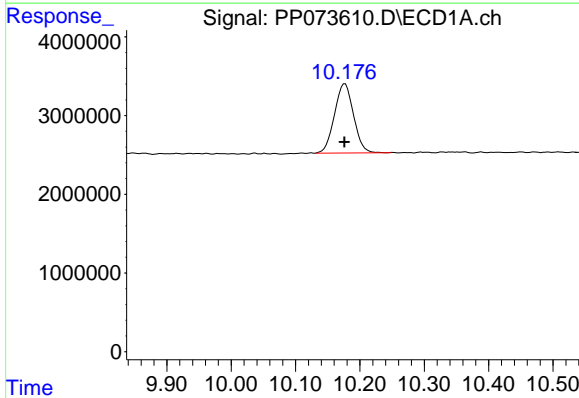
R.T.: 4.488 min
 Delta R.T.: 0.000 min
 Response: 23657525
 Conc: 17.27 ng/ml

Instrument :
 ECD_P
 ClientSampleId :
 I.BLK



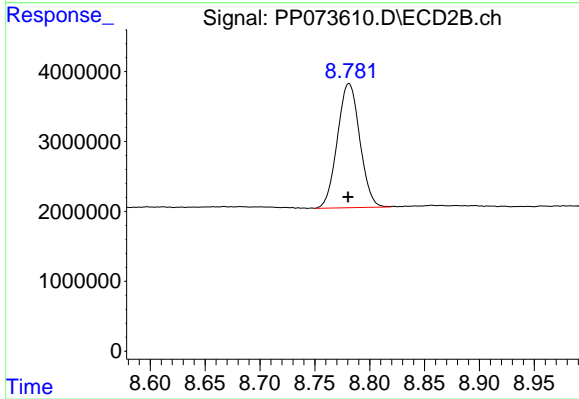
#1 Tetrachloro-m-xylene

R.T.: 3.780 min
 Delta R.T.: 0.002 min
 Response: 32171603
 Conc: 17.46 ng/ml



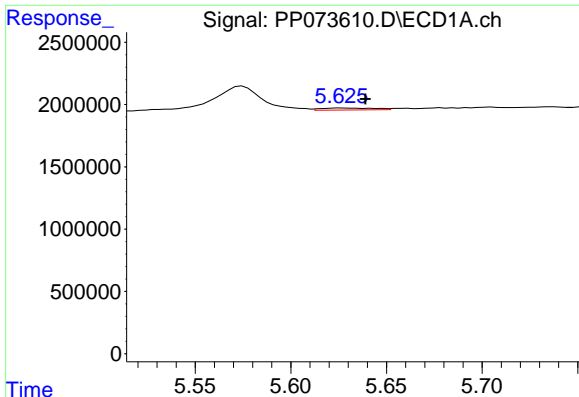
#2 Decachlorobiphenyl

R.T.: 10.177 min
 Delta R.T.: 0.000 min
 Response: 18090129
 Conc: 16.58 ng/ml



#2 Decachlorobiphenyl

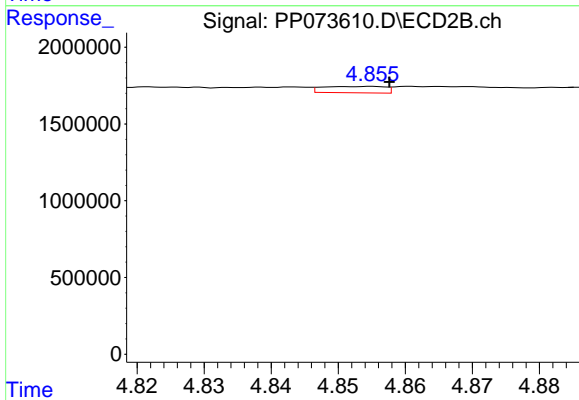
R.T.: 8.781 min
 Delta R.T.: 0.001 min
 Response: 25243600
 Conc: 19.08 ng/ml



#3 AR-1016-1

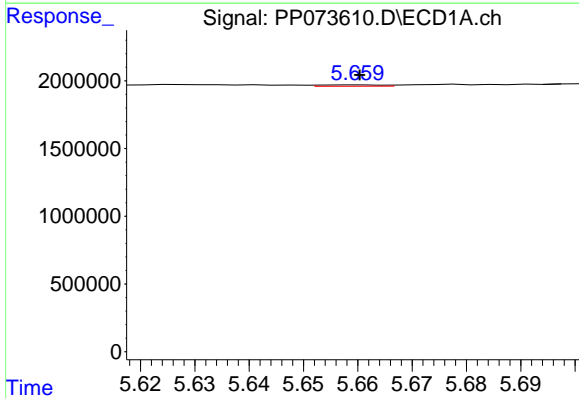
R.T.: 5.627 min
 Delta R.T.: -0.012 min
 Response: 314813
 Conc: 6.63 ng/ml

Instrument :
 ECD_P
 ClientSampleId :
 I.BLK



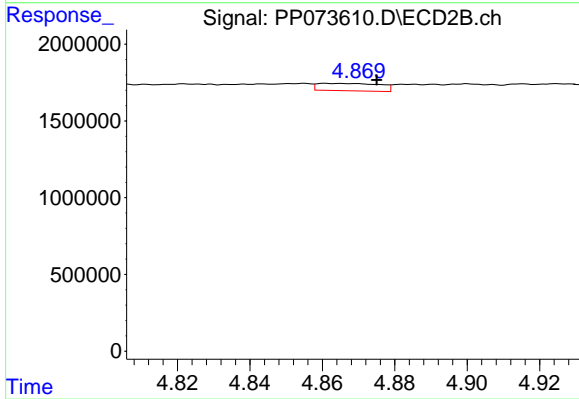
#3 AR-1016-1

R.T.: 4.855 min
 Delta R.T.: -0.003 min
 Response: 269626
 Conc: 3.95 ng/ml



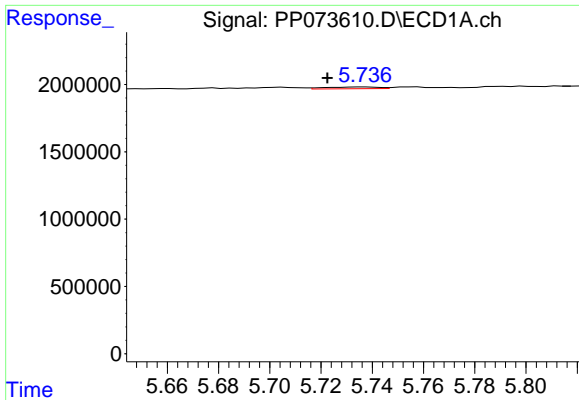
#4 AR-1016-2

R.T.: 5.660 min
 Delta R.T.: 0.000 min
 Response: 81919
 Conc: 1.15 ng/ml



#4 AR-1016-2

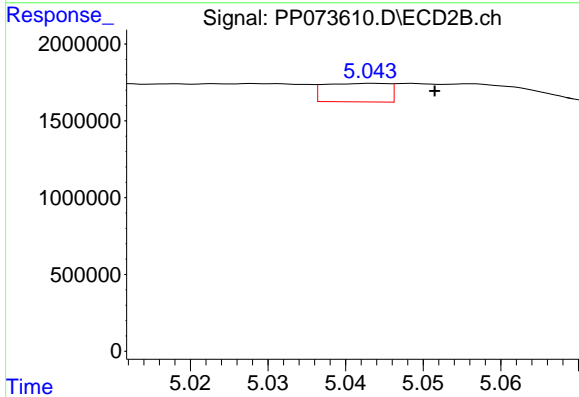
R.T.: 4.861 min
 Delta R.T.: -0.014 min
 Response: 567715
 Conc: 5.57 ng/ml



#5 AR-1016-3

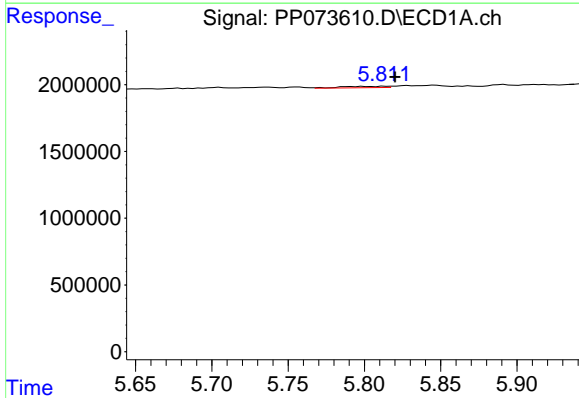
R.T.: 5.737 min
 Delta R.T.: 0.015 min
 Response: 181695
 Conc: 4.16 ng/ml

Instrument :
 ECD_P
 ClientSampleId :
 I.BLK



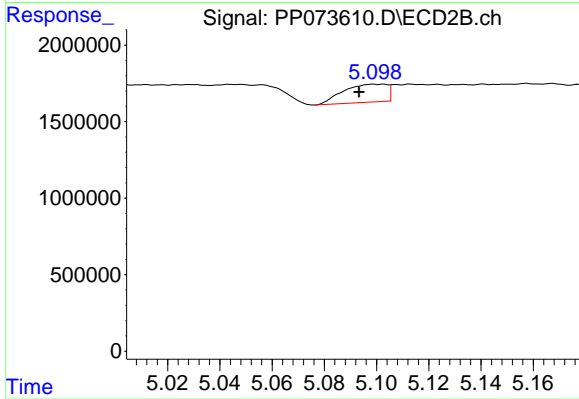
#5 AR-1016-3

R.T.: 5.044 min
 Delta R.T.: -0.008 min
 Response: 692942
 Conc: 12.81 ng/ml



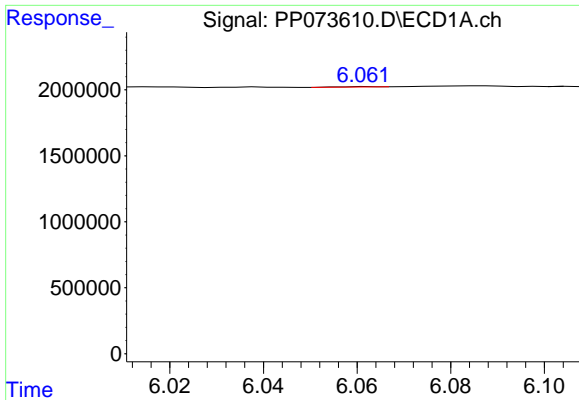
#6 AR-1016-4

R.T.: 5.813 min
 Delta R.T.: -0.007 min
 Response: 204665
 Conc: 5.69 ng/ml



#6 AR-1016-4

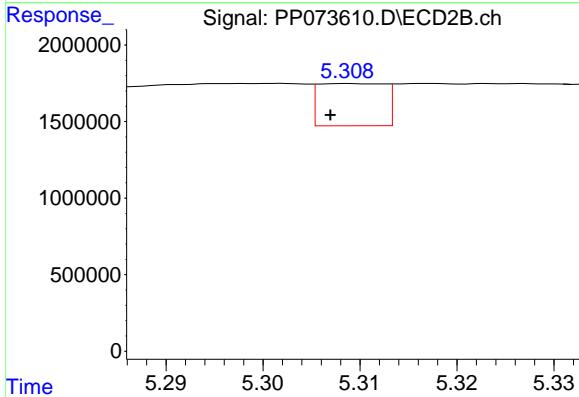
R.T.: 5.099 min
 Delta R.T.: 0.005 min
 Response: 1366253
 Conc: 31.14 ng/ml



#7 AR-1016-5

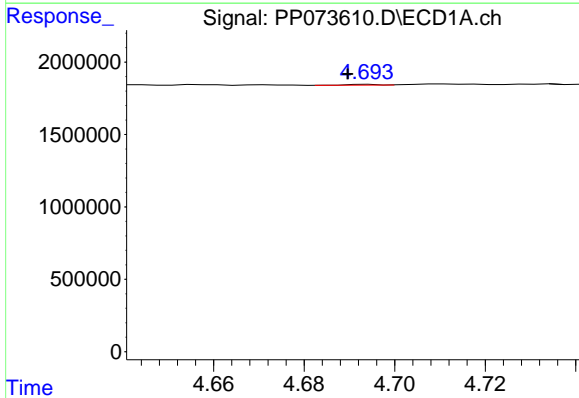
R.T.: 6.062 min
 Delta R.T.: -0.050 min
 Response: 11281
 Conc: 0.36 ng/ml

Instrument :
 ECD_P
 ClientSampleId :
 I.BLK



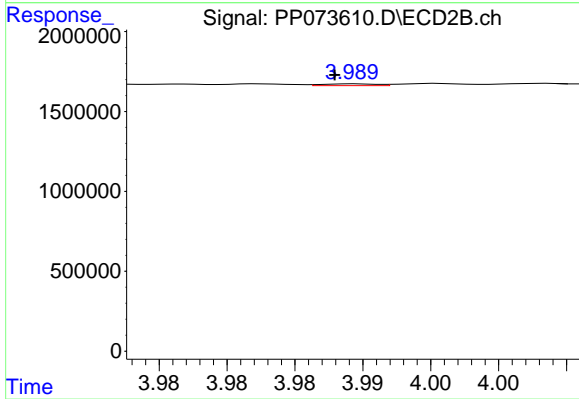
#7 AR-1016-5

R.T.: 5.309 min
 Delta R.T.: 0.002 min
 Response: 1313580
 Conc: 24.07 ng/ml



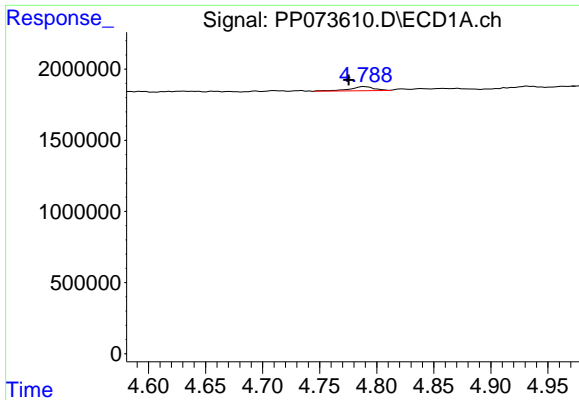
#8 AR-1221-1

R.T.: 4.695 min
 Delta R.T.: 0.005 min
 Response: 26790
 Conc: 1.50 ng/ml



#8 AR-1221-1

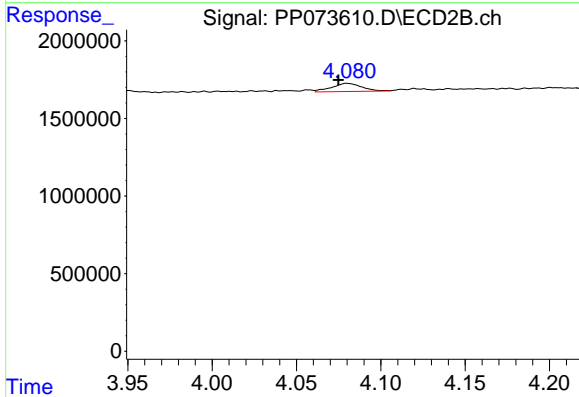
R.T.: 3.989 min
 Delta R.T.: 0.002 min
 Response: 30747
 Conc: 1.14 ng/ml



#9 AR-1221-2

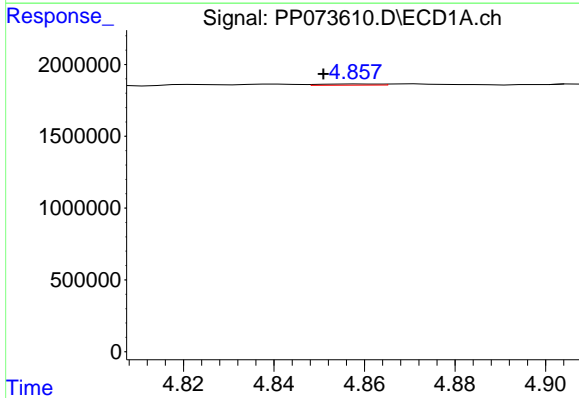
R.T.: 4.790 min
 Delta R.T.: 0.014 min
 Response: 422213
 Conc: 31.26 ng/ml

Instrument :
 ECD_P
 ClientSampleId :
 I.BLK



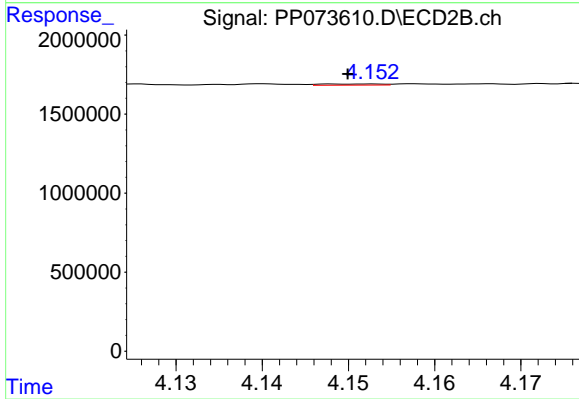
#9 AR-1221-2

R.T.: 4.080 min
 Delta R.T.: 0.005 min
 Response: 650035
 Conc: 31.93 ng/ml



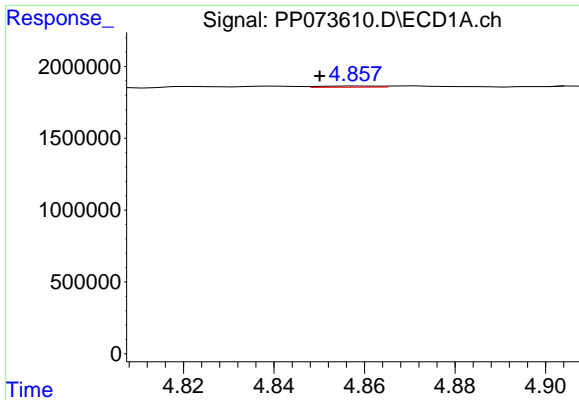
#10 AR-1221-3

R.T.: 4.859 min
 Delta R.T.: 0.008 min
 Response: 76981
 Conc: 1.85 ng/ml



#10 AR-1221-3

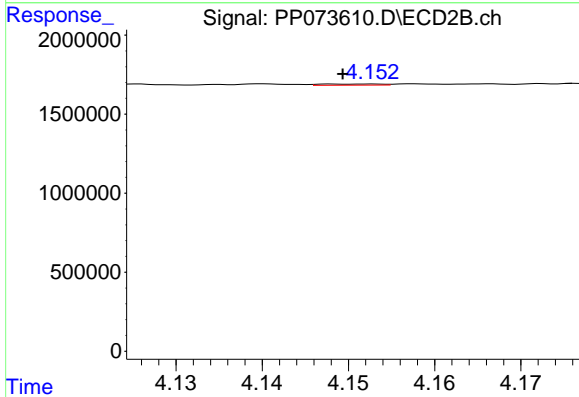
R.T.: 4.153 min
 Delta R.T.: 0.003 min
 Response: 36247
 Conc: 0.59 ng/ml



#11 AR-1232-1

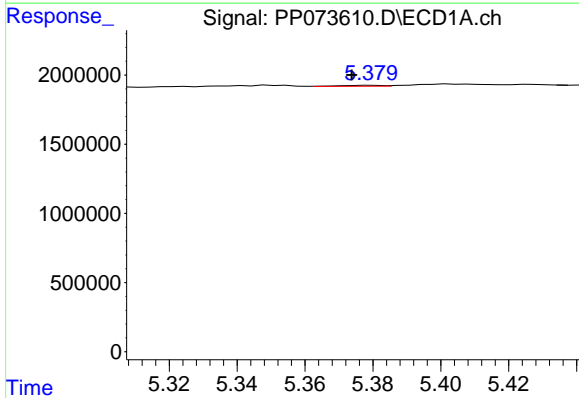
R.T.: 4.859 min
 Delta R.T.: 0.009 min
 Response: 76981
 Conc: 2.36 ng/ml

Instrument :
 ECD_P
 ClientSampleId :
 I.BLK



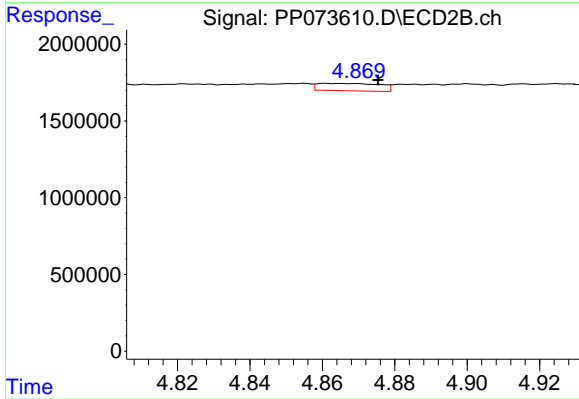
#11 AR-1232-1

R.T.: 4.153 min
 Delta R.T.: 0.003 min
 Response: 36247
 Conc: 0.78 ng/ml



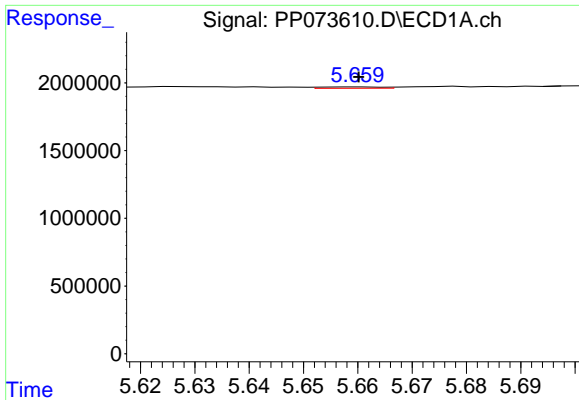
#12 AR-1232-2

R.T.: 5.380 min
 Delta R.T.: 0.006 min
 Response: 58240
 Conc: 3.58 ng/ml



#12 AR-1232-2

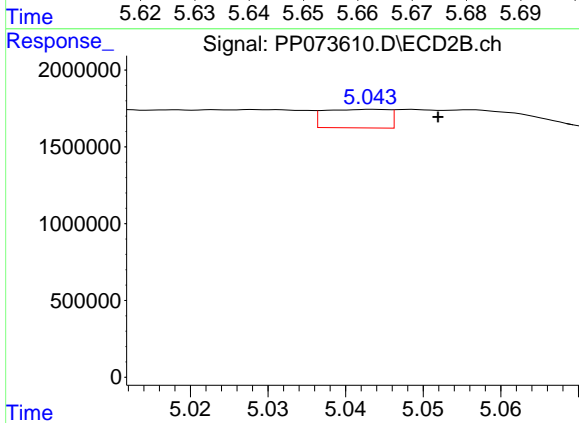
R.T.: 4.861 min
 Delta R.T.: -0.014 min
 Response: 567715
 Conc: 11.91 ng/ml



#13 AR-1232-3

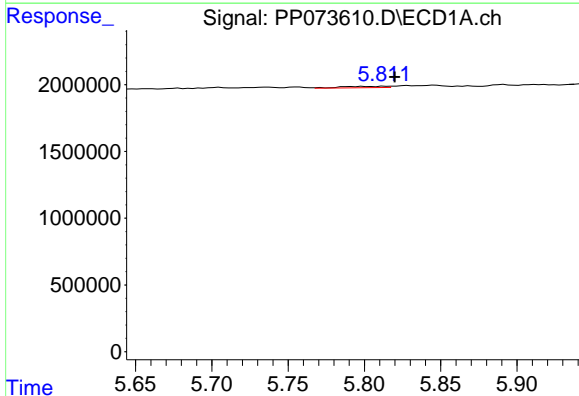
R.T.: 5.660 min
 Delta R.T.: 0.000 min
 Response: 81919
 Conc: 2.48 ng/ml

Instrument :
 ECD_P
 ClientSampleId :
 I.BLK



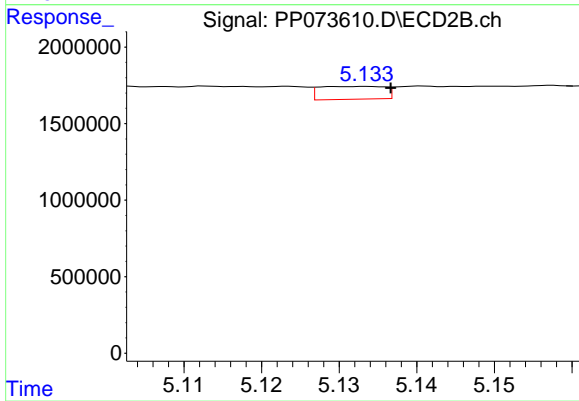
#13 AR-1232-3

R.T.: 5.044 min
 Delta R.T.: -0.008 min
 Response: 692942
 Conc: 27.69 ng/ml



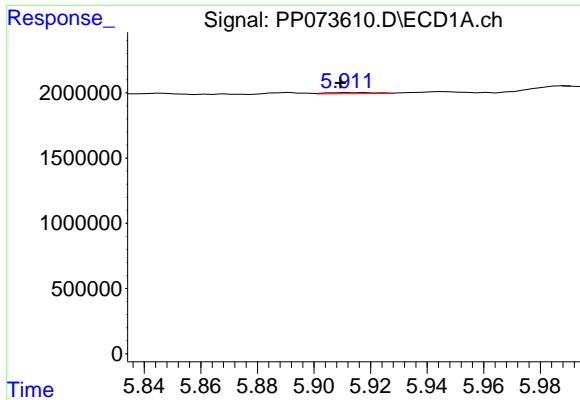
#14 AR-1232-4

R.T.: 5.813 min
 Delta R.T.: -0.007 min
 Response: 204665
 Conc: 12.45 ng/ml



#14 AR-1232-4

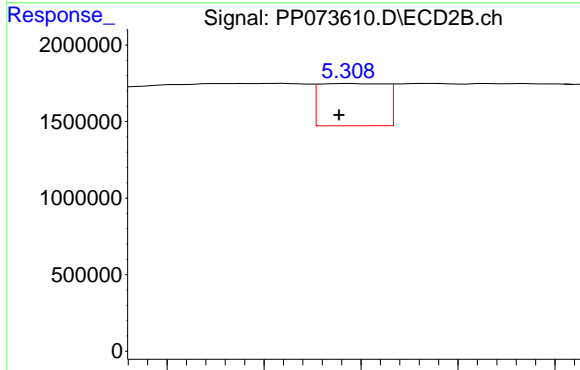
R.T.: 5.134 min
 Delta R.T.: -0.003 min
 Response: 491142
 Conc: 22.68 ng/ml



#15 AR-1232-5

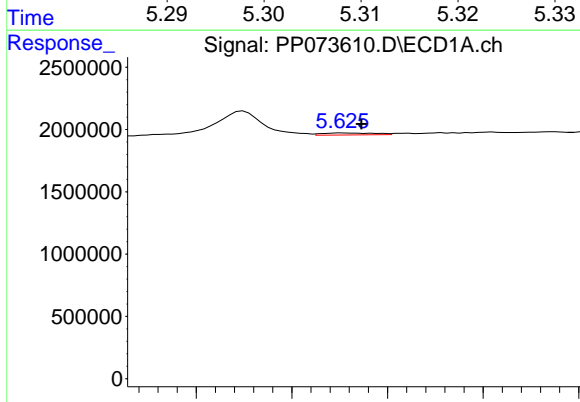
R.T.: 5.912 min
 Delta R.T.: 0.003 min
 Response: 110927
 Conc: 10.49 ng/ml

Instrument :
 ECD_P
 ClientSampleId :
 I.BLK



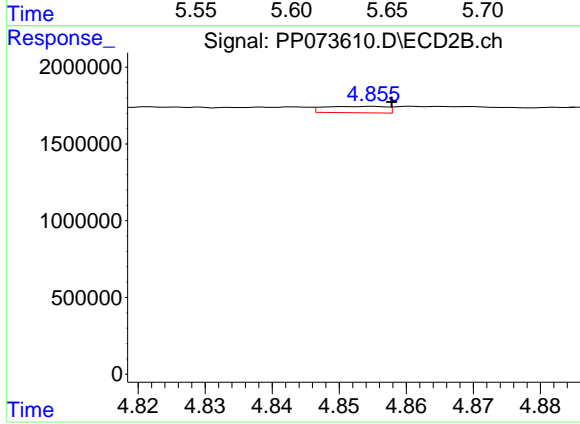
#15 AR-1232-5

R.T.: 5.309 min
 Delta R.T.: 0.000 min
 Response: 1313580
 Conc: 58.22 ng/ml



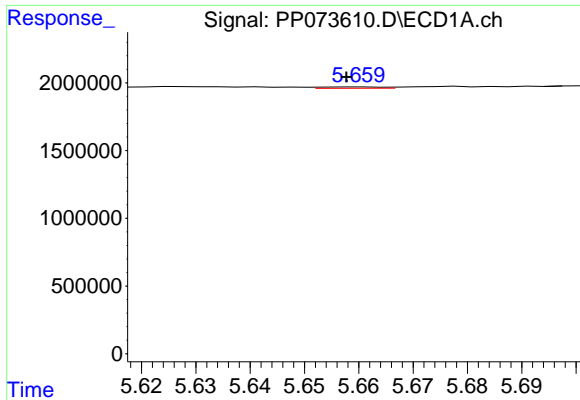
#16 AR-1242-1

R.T.: 5.627 min
 Delta R.T.: -0.010 min
 Response: 314813
 Conc: 8.24 ng/ml



#16 AR-1242-1

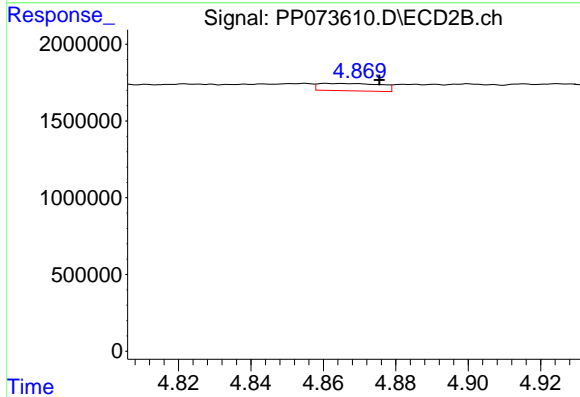
R.T.: 4.855 min
 Delta R.T.: -0.003 min
 Response: 269626
 Conc: 4.67 ng/ml



#17 AR-1242-2

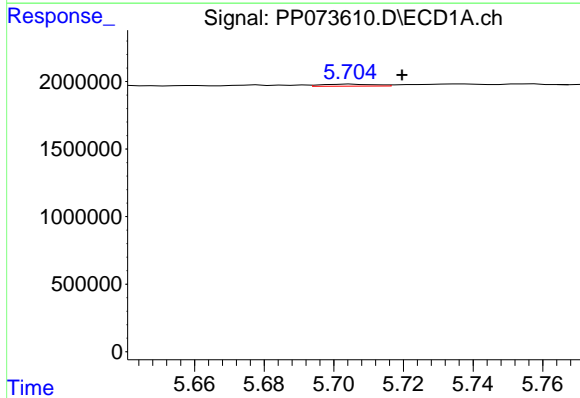
R.T.: 5.660 min
 Delta R.T.: 0.002 min
 Response: 81919
 Conc: 1.37 ng/ml

Instrument :
 ECD_P
 ClientSampleId :
 I.BLK



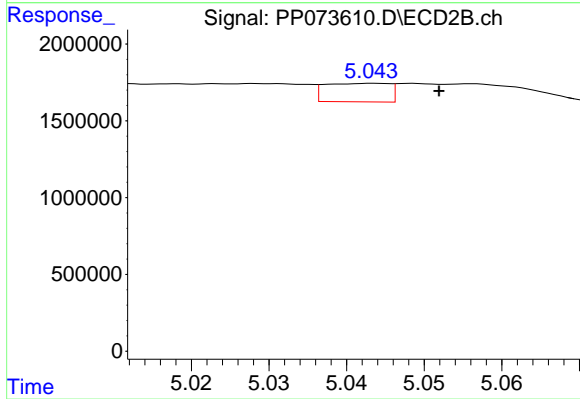
#17 AR-1242-2

R.T.: 4.861 min
 Delta R.T.: -0.015 min
 Response: 567715
 Conc: 6.57 ng/ml



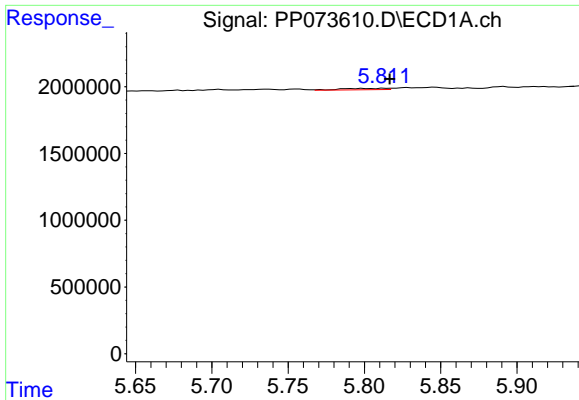
#18 AR-1242-3

R.T.: 5.705 min
 Delta R.T.: -0.014 min
 Response: 156864
 Conc: 4.28 ng/ml



#18 AR-1242-3

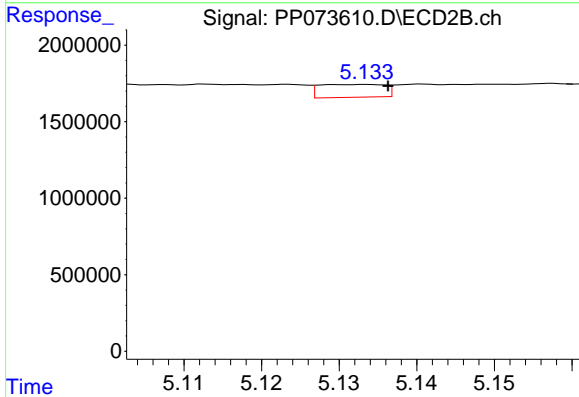
R.T.: 5.044 min
 Delta R.T.: -0.008 min
 Response: 692942
 Conc: 15.08 ng/ml



#19 AR-1242-4

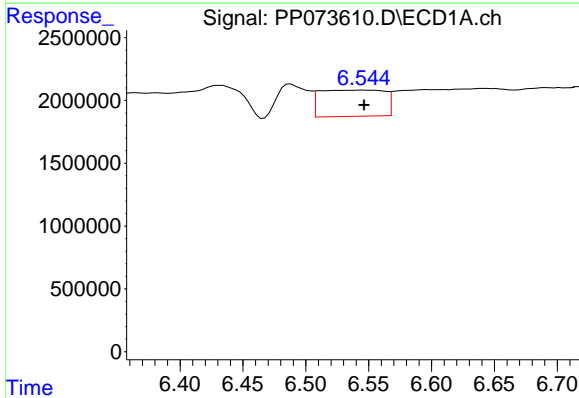
R.T.: 5.813 min
 Delta R.T.: -0.004 min
 Response: 204665
 Conc: 6.37 ng/ml

Instrument :
 ECD_P
 ClientSampleId :
 I.BLK



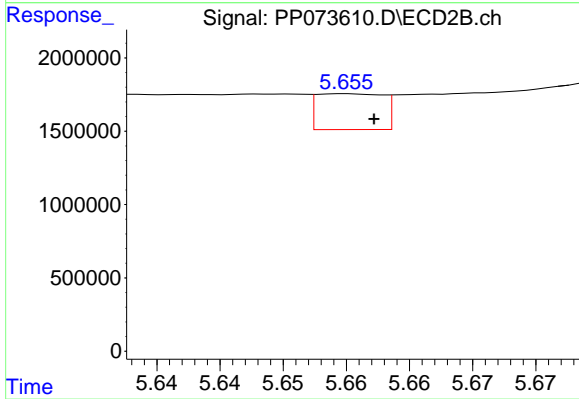
#19 AR-1242-4

R.T.: 5.134 min
 Delta R.T.: -0.003 min
 Response: 491142
 Conc: 11.10 ng/ml



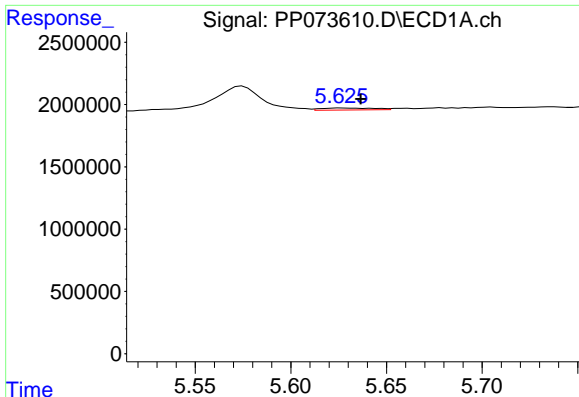
#20 AR-1242-5

R.T.: 6.547 min
 Delta R.T.: 0.000 min
 Response: 7430861
 Conc: 226.99 ng/ml



#20 AR-1242-5

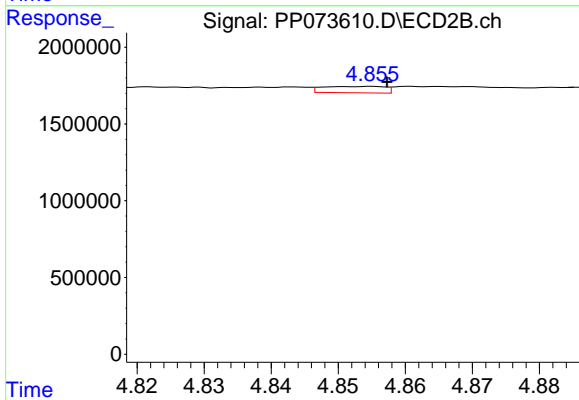
R.T.: 5.655 min
 Delta R.T.: -0.002 min
 Response: 892185
 Conc: 16.15 ng/ml



#21 AR-1248-1

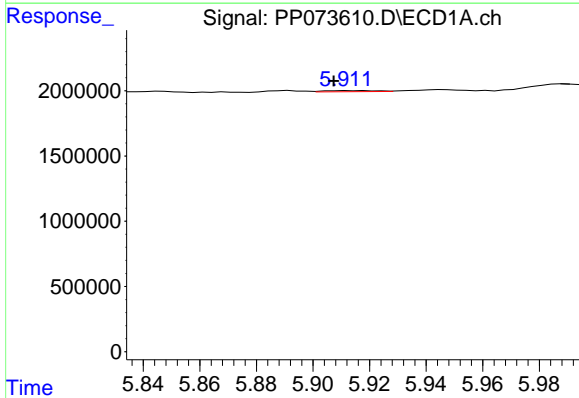
R.T.: 5.627 min
 Delta R.T.: -0.010 min
 Response: 314813
 Conc: 10.20 ng/ml

Instrument :
 ECD_P
 ClientSampleId :
 I.BLK



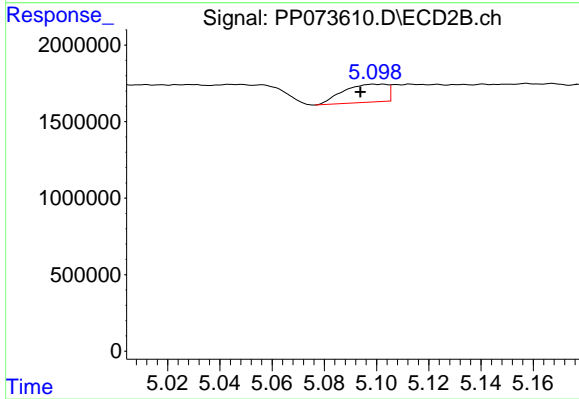
#21 AR-1248-1

R.T.: 4.855 min
 Delta R.T.: -0.002 min
 Response: 269626
 Conc: 6.01 ng/ml



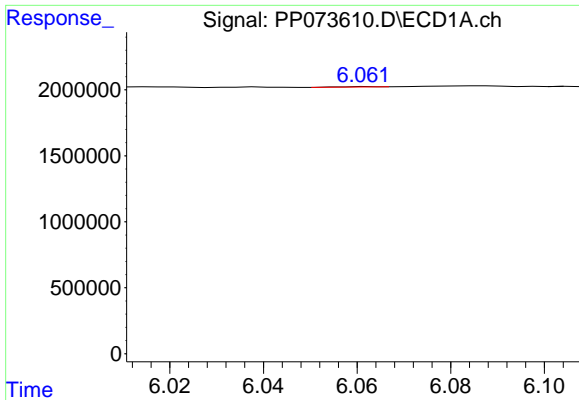
#22 AR-1248-2

R.T.: 5.912 min
 Delta R.T.: 0.005 min
 Response: 110927
 Conc: 2.78 ng/ml



#22 AR-1248-2

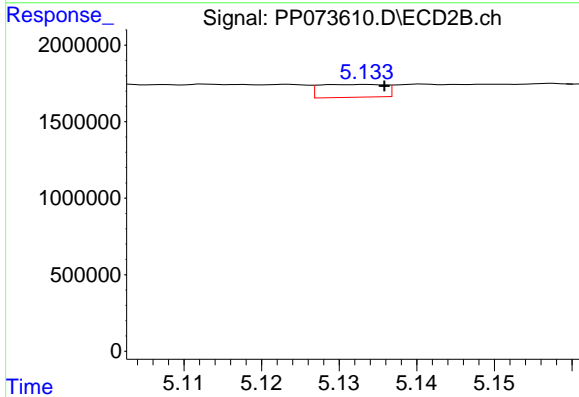
R.T.: 5.099 min
 Delta R.T.: 0.005 min
 Response: 1366253
 Conc: 22.20 ng/ml



#23 AR-1248-3

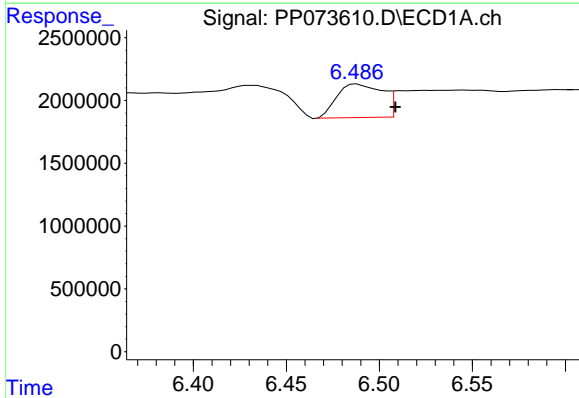
R.T.: 6.062 min
 Delta R.T.: -0.047 min
 Response: 11281
 Conc: 0.25 ng/ml

Instrument :
 ECD_P
 ClientSampleId :
 I.BLK



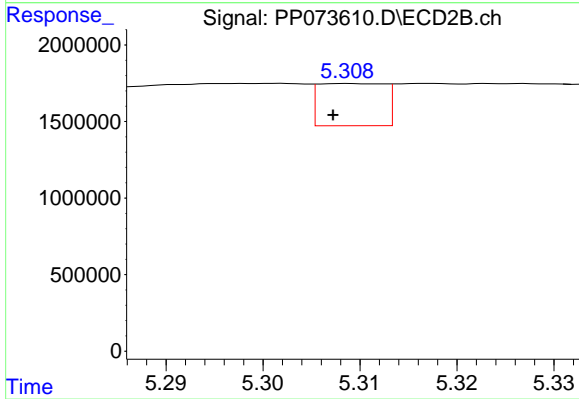
#23 AR-1248-3

R.T.: 5.134 min
 Delta R.T.: -0.002 min
 Response: 491142
 Conc: 7.67 ng/ml



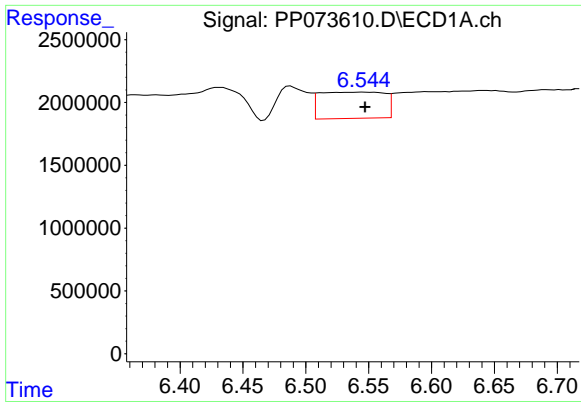
#24 AR-1248-4

R.T.: 6.488 min
 Delta R.T.: -0.021 min
 Response: 4534326
 Conc: 82.32 ng/ml



#24 AR-1248-4

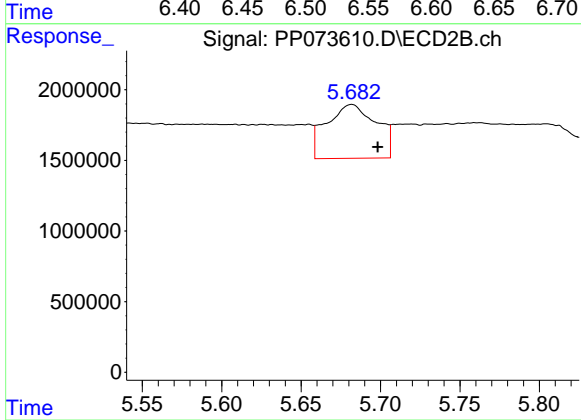
R.T.: 5.309 min
 Delta R.T.: 0.002 min
 Response: 1313580
 Conc: 17.43 ng/ml



#25 AR-1248-5

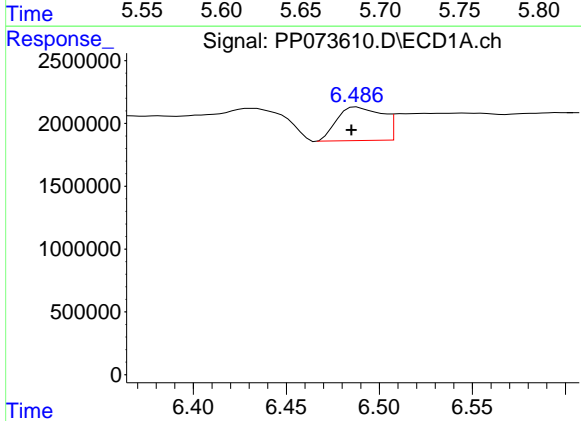
R.T.: 6.547 min
 Delta R.T.: 0.000 min
 Response: 7430861
 Conc: 138.14 ng/ml

Instrument :
 ECD_P
 ClientSampleId :
 I.BLK



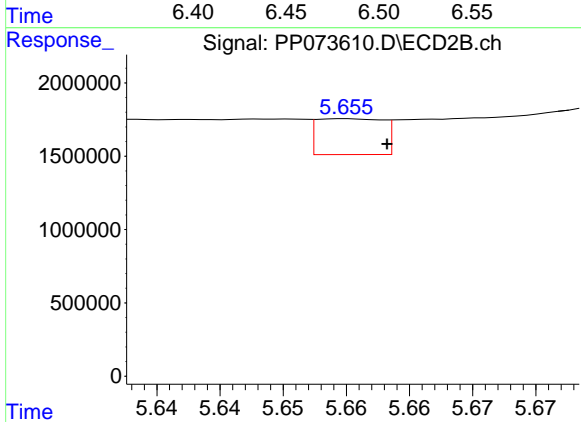
#25 AR-1248-5

R.T.: 5.682 min
 Delta R.T.: -0.016 min
 Response: 8334067
 Conc: 111.73 ng/ml



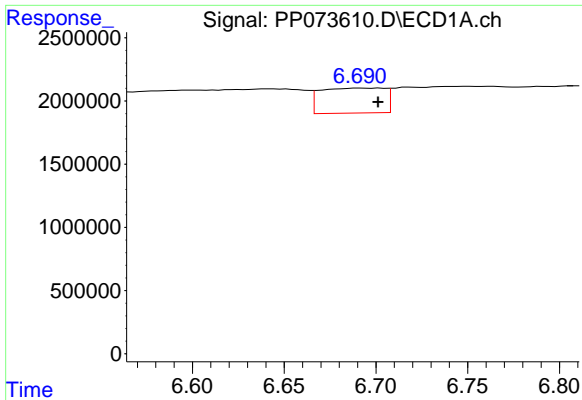
#26 AR-1254-1

R.T.: 6.488 min
 Delta R.T.: 0.003 min
 Response: 4534326
 Conc: 84.61 ng/ml



#26 AR-1254-1

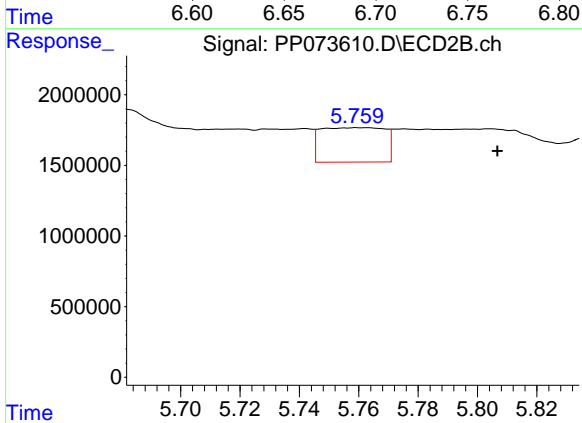
R.T.: 5.655 min
 Delta R.T.: -0.003 min
 Response: 892185
 Conc: 7.69 ng/ml



#27 AR-1254-2

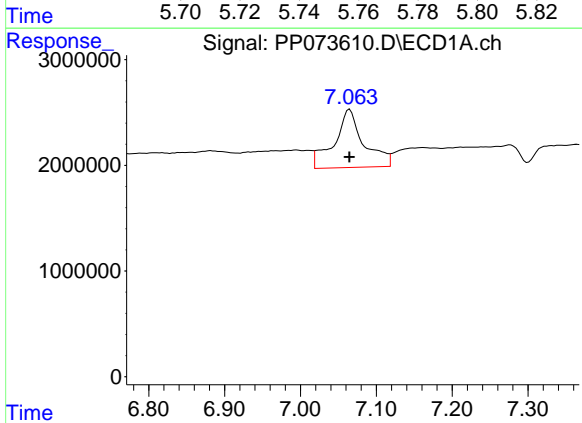
R.T.: 6.691 min
 Delta R.T.: -0.010 min
 Response: 4806697
 Conc: 57.71 ng/ml

Instrument :
 ECD_P
 ClientSampleId :
 I.BLK



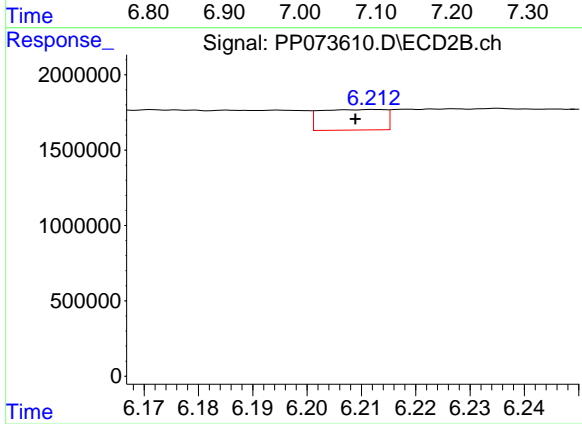
#27 AR-1254-2

R.T.: 5.763 min
 Delta R.T.: -0.044 min
 Response: 3662314
 Conc: 36.40 ng/ml



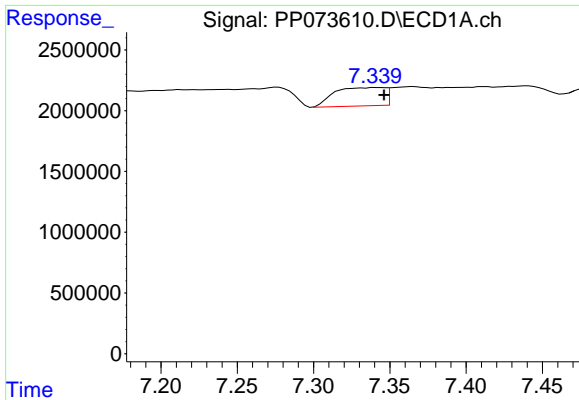
#28 AR-1254-3

R.T.: 7.065 min
 Delta R.T.: 0.000 min
 Response: 14899810
 Conc: 168.68 ng/ml



#28 AR-1254-3

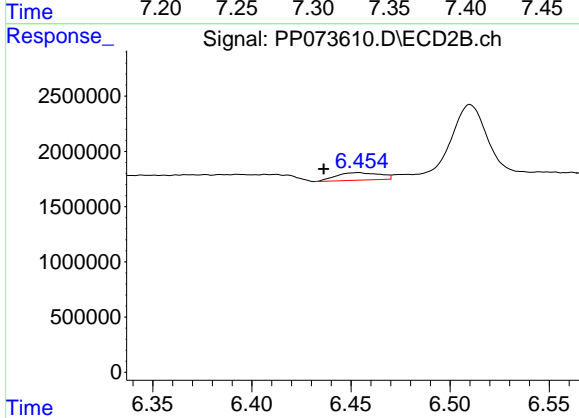
R.T.: 6.213 min
 Delta R.T.: 0.004 min
 Response: 1127141
 Conc: 7.30 ng/ml



#29 AR-1254-4

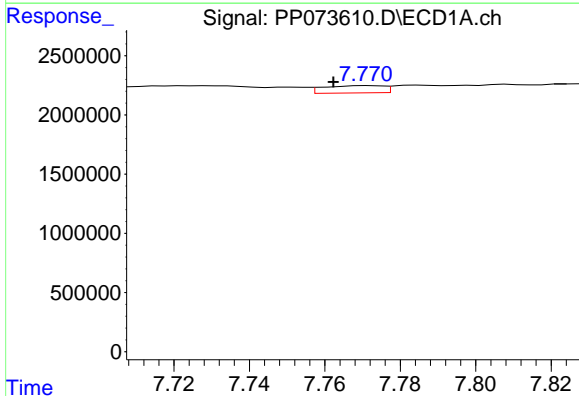
R.T.: 7.340 min
 Delta R.T.: -0.006 min
 Response: 3467208
 Conc: 44.07 ng/ml

Instrument :
 ECD_P
 ClientSampleId :
 I.BLK



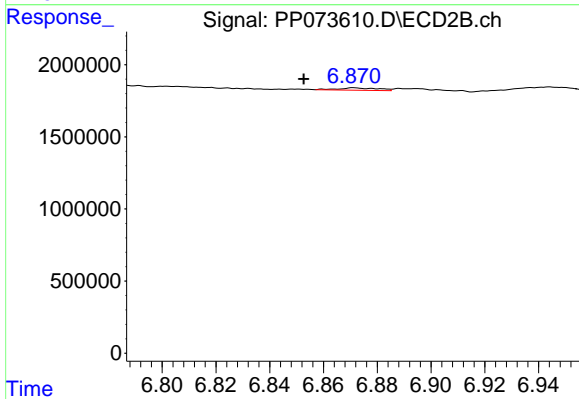
#29 AR-1254-4

R.T.: 6.454 min
 Delta R.T.: 0.018 min
 Response: 1041758
 Conc: 11.02 ng/ml



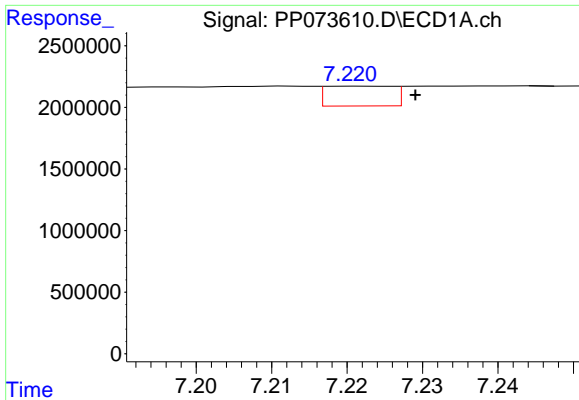
#30 AR-1254-5

R.T.: 7.772 min
 Delta R.T.: 0.009 min
 Response: 677892
 Conc: 9.20 ng/ml



#30 AR-1254-5

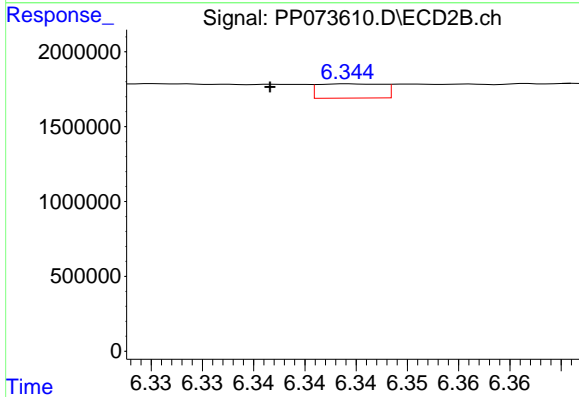
R.T.: 6.871 min
 Delta R.T.: 0.018 min
 Response: 172856
 Conc: 1.30 ng/ml



#31 AR-1260-1

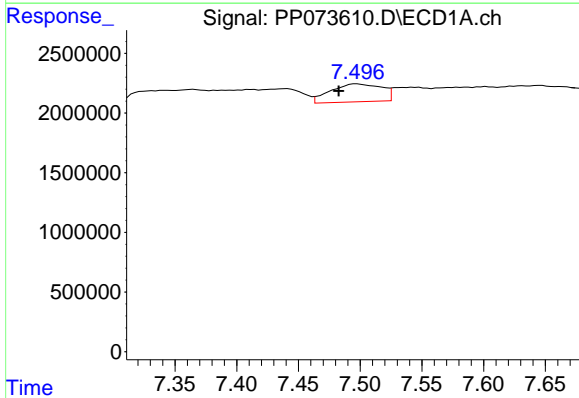
R.T.: 7.221 min
 Delta R.T.: -0.008 min
 Response: 1002385
 Conc: 17.00 ng/ml

Instrument :
 ECD_P
 ClientSampleId :
 I.BLK



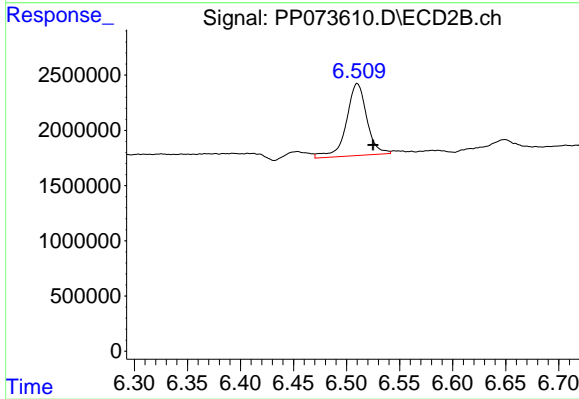
#31 AR-1260-1

R.T.: 6.344 min
 Delta R.T.: 0.008 min
 Response: 421595
 Conc: 4.32 ng/ml



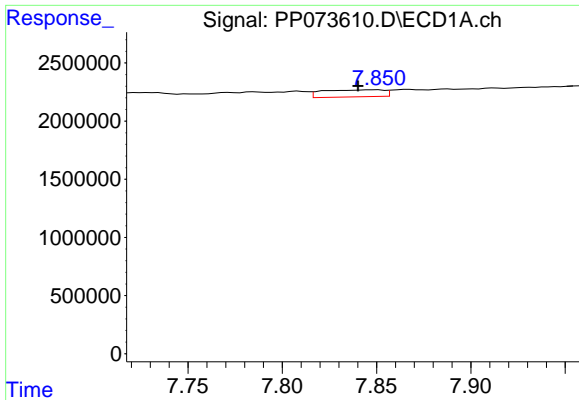
#32 AR-1260-2

R.T.: 7.497 min
 Delta R.T.: 0.014 min
 Response: 4309329
 Conc: 44.96 ng/ml



#32 AR-1260-2

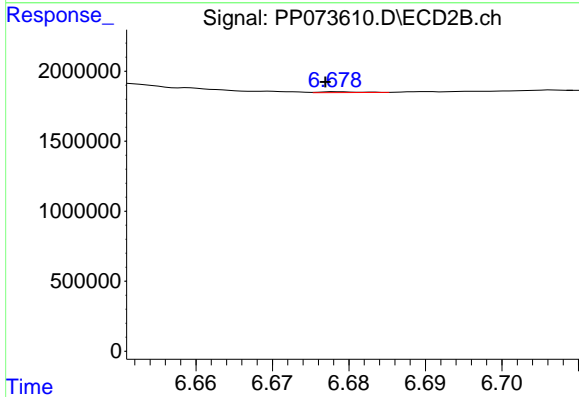
R.T.: 6.510 min
 Delta R.T.: -0.015 min
 Response: 8736094
 Conc: 71.12 ng/ml



#33 AR-1260-3

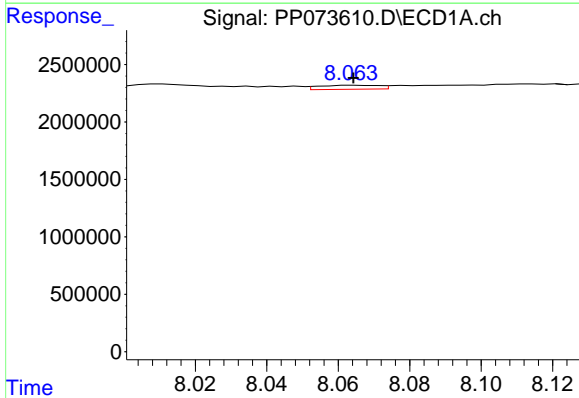
R.T.: 7.851 min
 Delta R.T.: 0.011 min
 Response: 1358818
 Conc: 18.60 ng/ml

Instrument :
 ECD_P
 ClientSampleId :
 I.BLK



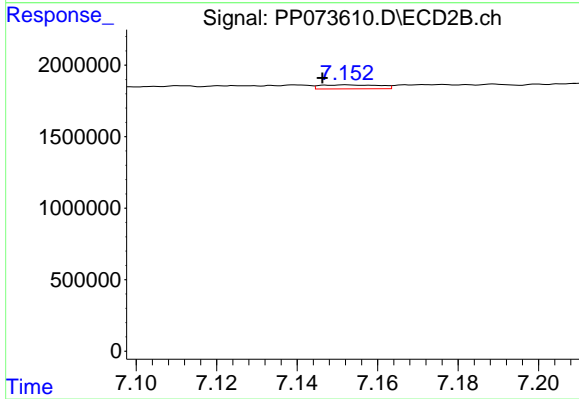
#33 AR-1260-3

R.T.: 6.678 min
 Delta R.T.: 0.002 min
 Response: 21250
 Conc: 0.19 ng/ml



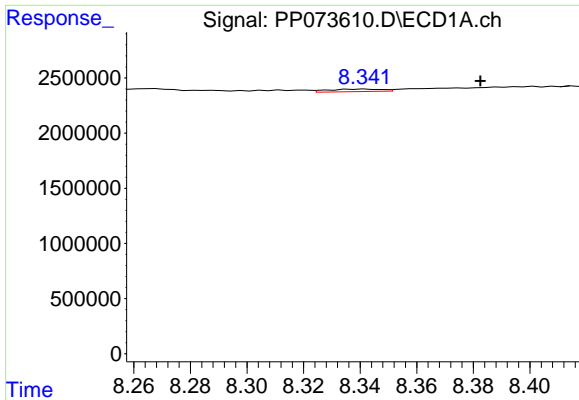
#34 AR-1260-4

R.T.: 8.064 min
 Delta R.T.: 0.000 min
 Response: 413509
 Conc: 6.33 ng/ml



#34 AR-1260-4

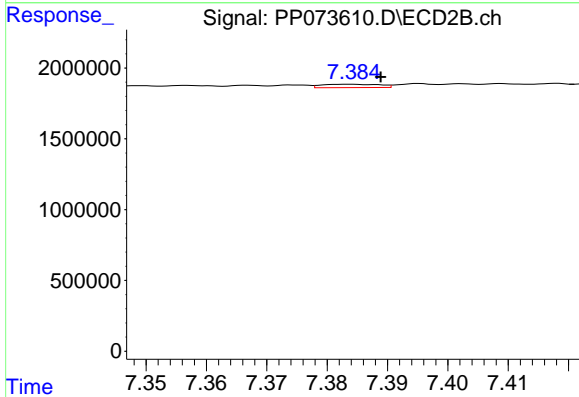
R.T.: 7.152 min
 Delta R.T.: 0.006 min
 Response: 285572
 Conc: 3.19 ng/ml



#35 AR-1260-5

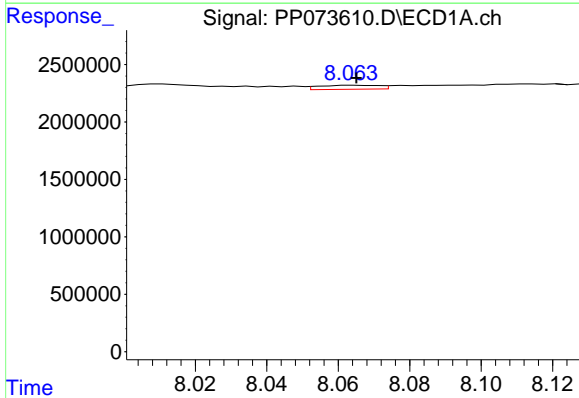
R.T.: 8.342 min
 Delta R.T.: -0.041 min
 Response: 298885
 Conc: 1.98 ng/ml

Instrument :
 ECD_P
 ClientSampleId :
 I.BLK



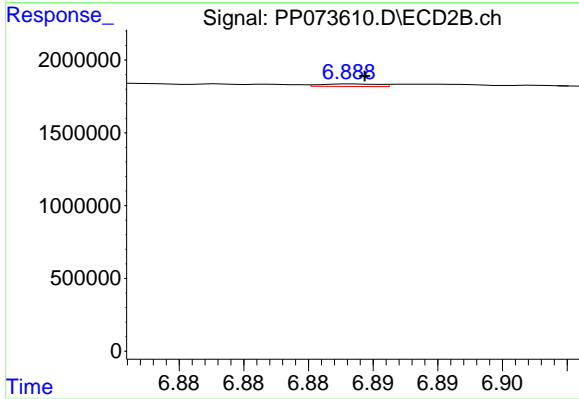
#35 AR-1260-5

R.T.: 7.384 min
 Delta R.T.: -0.005 min
 Response: 158657
 Conc: 0.71 ng/ml



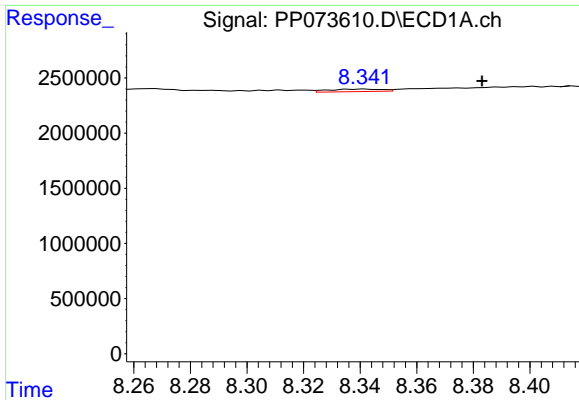
#36 AR-1262-1

R.T.: 8.064 min
 Delta R.T.: 0.000 min
 Response: 413509
 Conc: 4.75 ng/ml



#36 AR-1262-1

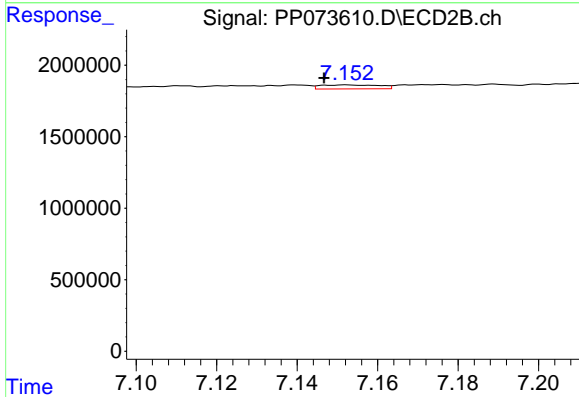
R.T.: 6.888 min
 Delta R.T.: 0.000 min
 Response: 54165
 Conc: 0.37 ng/ml



#37 AR-1262-2

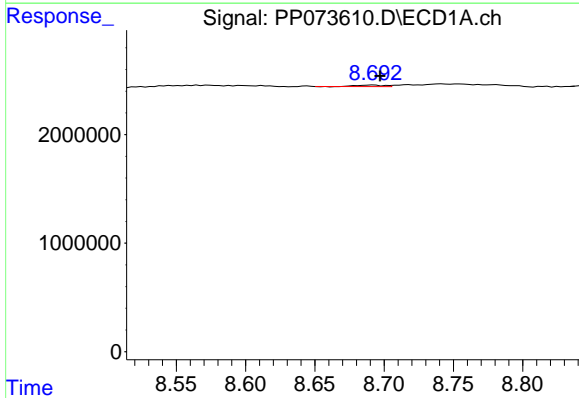
R.T.: 8.342 min
 Delta R.T.: -0.041 min
 Response: 298885
 Conc: 1.51 ng/ml

Instrument :
 ECD_P
 ClientSampleId :
 I.BLK



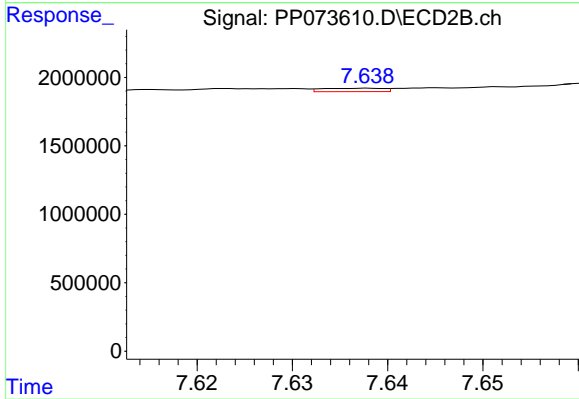
#37 AR-1262-2

R.T.: 7.152 min
 Delta R.T.: 0.005 min
 Response: 285572
 Conc: 2.23 ng/ml



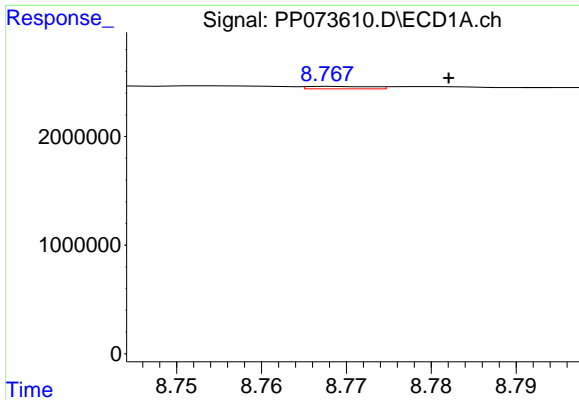
#38 AR-1262-3

R.T.: 8.693 min
 Delta R.T.: -0.004 min
 Response: 199209
 Conc: 1.58 ng/ml



#38 AR-1262-3

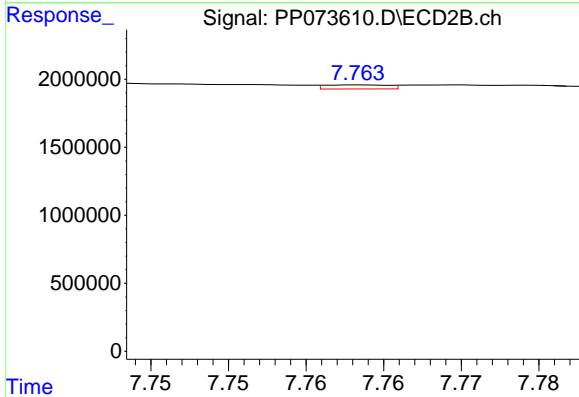
R.T.: 7.638 min
 Delta R.T.: -0.031 min
 Response: 110276
 Conc: 0.97 ng/ml



#39 AR-1262-4

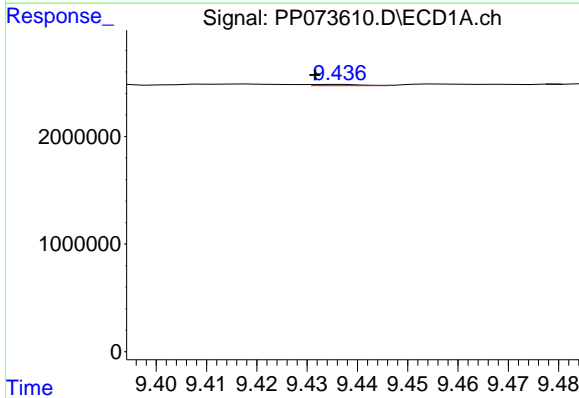
R.T.: 8.769 min
 Delta R.T.: -0.013 min
 Response: 120171
 Conc: 1.29 ng/ml

Instrument :
 ECD_P
 ClientSampleId :
 I.BLK



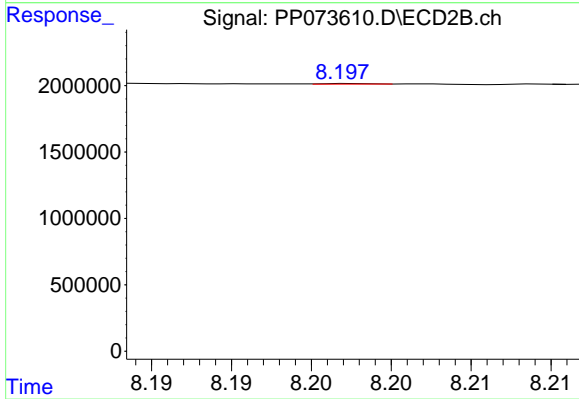
#39 AR-1262-4

R.T.: 7.764 min
 Delta R.T.: 0.029 min
 Response: 84151
 Conc: 0.46 ng/ml



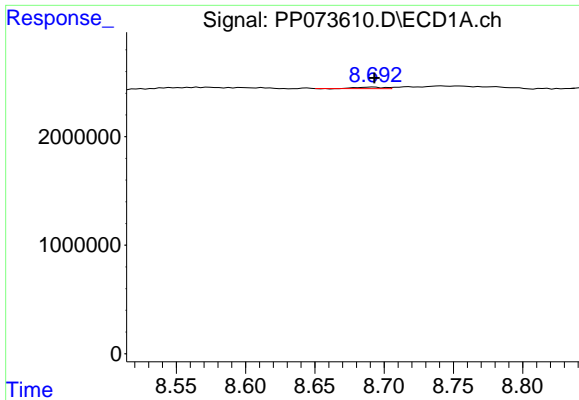
#40 AR-1262-5

R.T.: 9.437 min
 Delta R.T.: 0.005 min
 Response: 79221
 Conc: 1.25 ng/ml



#40 AR-1262-5

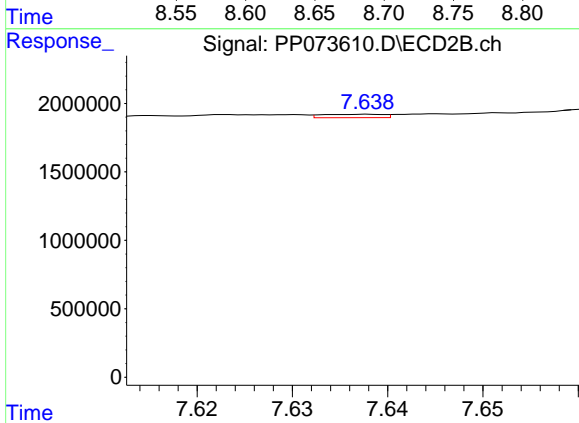
R.T.: 8.198 min
 Delta R.T.: -0.034 min
 Response: 27400
 Conc: 0.32 ng/ml



#41 AR-1268-1

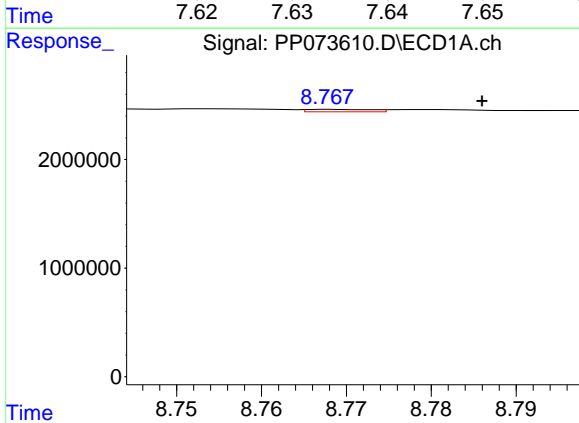
R.T.: 8.693 min
 Delta R.T.: 0.000 min
 Response: 199209
 Conc: 0.89 ng/ml

Instrument :
 ECD_P
 ClientSampleId :
 I.BLK



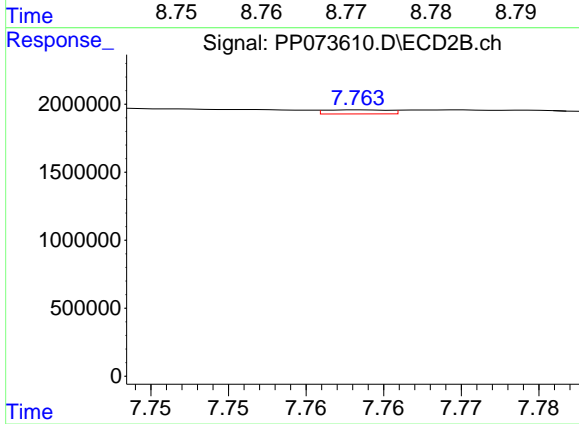
#41 AR-1268-1

R.T.: 7.638 min
 Delta R.T.: -0.031 min
 Response: 110276
 Conc: 0.36 ng/ml



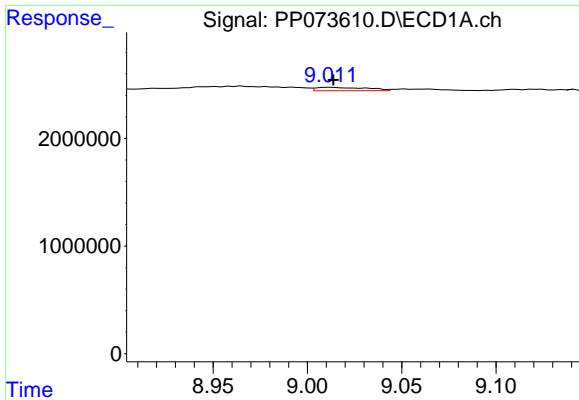
#42 AR-1268-2

R.T.: 8.769 min
 Delta R.T.: -0.017 min
 Response: 120171
 Conc: 0.63 ng/ml



#42 AR-1268-2

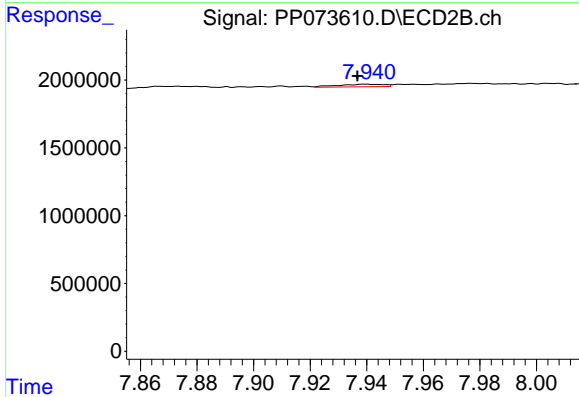
R.T.: 7.764 min
 Delta R.T.: 0.028 min
 Response: 84151
 Conc: 0.32 ng/ml



#43 AR-1268-3

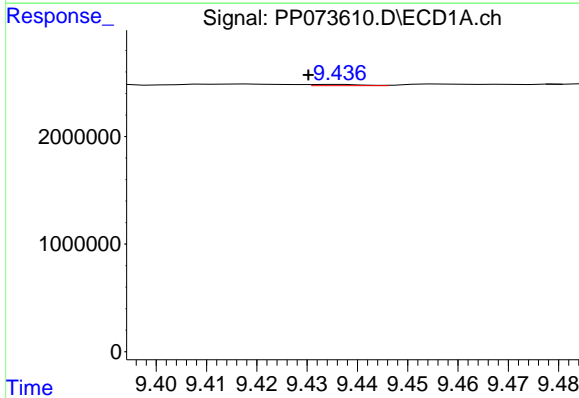
R.T.: 9.012 min
 Delta R.T.: -0.001 min
 Response: 586255
 Conc: 3.54 ng/ml

Instrument :
 ECD_P
 ClientSampleId :
 I.BLK



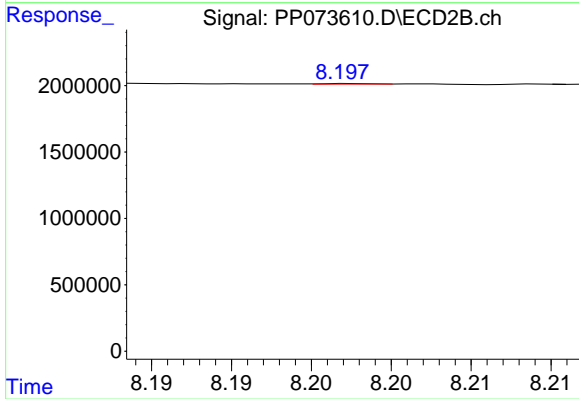
#43 AR-1268-3

R.T.: 7.939 min
 Delta R.T.: 0.002 min
 Response: 208791
 Conc: 0.93 ng/ml



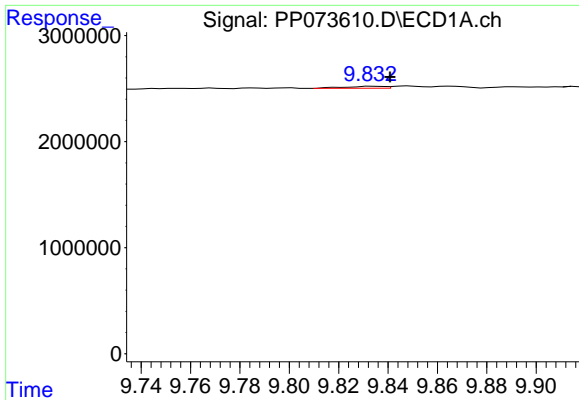
#44 AR-1268-4

R.T.: 9.437 min
 Delta R.T.: 0.007 min
 Response: 79221
 Conc: 1.14 ng/ml



#44 AR-1268-4

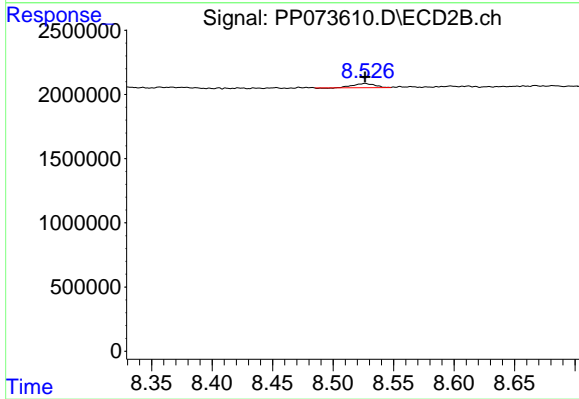
R.T.: 8.198 min
 Delta R.T.: -0.033 min
 Response: 27400
 Conc: 0.29 ng/ml



#45 AR-1268-5

R.T.: 9.834 min
 Delta R.T.: -0.007 min
 Response: 213950
 Conc: 0.46 ng/ml

Instrument :
 ECD_P
 ClientSampleId :
 I.BLK



#45 AR-1268-5

R.T.: 8.527 min
 Delta R.T.: 0.000 min
 Response: 401130
 Conc: 0.65 ng/ml