

Data Path : Z:\pestpcbsrv\HPCHEM1\ECD\_P\Data\PP070925\  
 Data File : PP073612.D  
 Signal(s) : Signal #1: ECD1A.ch Signal #2: ECD2B.ch  
 Acq On : 08 Jul 2025 16:18  
 Operator : YP\AJ  
 Sample : PB168754BS  
 Misc :  
 ALS Vial : 19 Sample Multiplier: 1

Instrument :  
 ECD\_P  
 ClientSampleId :  
 PB168754BS

Integration File signal 1: autoint1.e  
 Integration File signal 2: autoint2.e  
 Quant Time: Jul 09 01:41:56 2025  
 Quant Method : Z:\pestpcbsrv\HPCHEM1\ECD\_P\methods\PP070825.M  
 Quant Title : GC EXTRACTABLES  
 QLast Update : Tue Jul 08 08:35:32 2025  
 Response via : Initial Calibration  
 Integrator: ChemStation

Volume Inj. : 2 µl  
 Signal #1 Phase : ZB-MR1 Signal #2 Phase: ZB-MR2  
 Signal #1 Info : 30Mx0.32mmx 0.50µ Signal #2 Info : 30M x 0.32mm x 0.25µm

Compound	RT#1	RT#2	Resp#1	Resp#2	ng/ml	ng/ml
System Monitoring Compounds						
1) SA Tetrachlo...	4.489	3.781	28493875	36090819	20.806	19.590
2) SA Decachlor...	10.177	8.782	22373171	30635568	20.506	23.154
Target Compounds						
3) L1 AR-1016-1	5.640	4.859	21412519	31822389	450.661	466.777
4) L1 AR-1016-2	5.661	4.876	33533792	47370486	470.882	464.944
5) L1 AR-1016-3	5.723	5.053	20021431	25430534	458.544	470.010
6) L1 AR-1016-4	5.821	5.095	16781899	19927552	466.870	454.129
7) L1 AR-1016-5	6.112	5.309	14888491	25611418	475.209	469.224
8) L2 AR-1221-1	4.688	3.988	2120901	3697815	118.709	136.729
9) L2 AR-1221-2	4.776	4.076	2819168	4451729	208.758	218.647
10) L2 AR-1221-3	4.851	4.151	12190565	17535159	293.008	285.363
11) L3 AR-1232-1	4.851	4.151	12190565	17535159	373.363	376.175
12) L3 AR-1232-2	5.375	4.876	16101258	47370486	990.561	993.929
13) L3 AR-1232-3	5.661	5.053	33533792	25430534	1016.377	1016.042
14) L3 AR-1232-4	5.821	5.137	16781899	24280536	1020.477	1121.177
15) L3 AR-1232-5	5.911	5.309	12897262	25611418	1220.135	1135.084
16) L4 AR-1242-1	5.640	4.859	21412519	31822389	560.710	550.896
17) L4 AR-1242-2	5.661	4.876	33533792	47370486	559.997	547.926
18) L4 AR-1242-3	5.723	5.053	20021431	25430534	546.721	553.479
19) L4 AR-1242-4	5.821	5.137	16781899	24280536	522.215	548.548
20) L4 AR-1242-5	6.551	5.659	2580107	20674449	78.813	374.249 #
21) L5 AR-1248-1	5.640	4.859	21412519	31822389	693.623	708.820
22) L5 AR-1248-2	5.911	5.095	12897262	19927552	323.051	323.833
23) L5 AR-1248-3	6.112	5.137	14888491	24280536	335.254	379.001
24) L5 AR-1248-4	6.488	5.309	14084893	25611418	255.715	339.776 #
25) L5 AR-1248-5	6.551	5.700	2580107	3369272	47.966	45.170
26) L6 AR-1254-1	6.488	5.659	14084893	20674449	262.829	178.182 #
27) L6 AR-1254-2	6.703	5.807	12933251	20179622	155.282	200.546 #
28) L6 AR-1254-3	7.066	6.223	7186931	35192560	81.363	227.863 #
29) L6 AR-1254-4	7.350	6.437	5190468	3329822	65.980	35.214 #
30) L6 AR-1254-5	7.763	6.852	44891317	64217579	609.276	481.229
31) L7 AR-1260-1	7.230	6.338	28166661	47421134	477.715	486.070
32) L7 AR-1260-2	7.483	6.527	40449930	58764582	422.057	478.393
33) L7 AR-1260-3	7.841	6.679	28583372	52568182	391.175	480.233
34) L7 AR-1260-4	8.065	7.148	28068380	39550582	429.838	442.359
35) L7 AR-1260-5	8.383	7.390	63392135	95768861	420.225	426.138
36) L8 AR-1262-1	8.065	6.889	28068380	43914324	322.524	297.338
37) L8 AR-1262-2	8.383	7.148	63392135	39550582	320.118	309.402
38) L8 AR-1262-3	8.705	7.670	38044251	19121857	302.599	167.708 #
39) L8 AR-1262-4	8.766	7.733	20973831	63854209	224.890	346.941 #
40) L8 AR-1262-5	9.431	8.232	14989534	20238839	236.468	239.695
41) L9 AR-1268-1	8.705	7.670	38044251	19121857	170.431	62.210 #

Data Path : Z:\pestpcbsrv\HPCHEM1\ECD\_P\Data\PP070925\  
 Data File : PP073612.D  
 Signal(s) : Signal #1: ECD1A.ch Signal #2: ECD2B.ch  
 Acq On : 08 Jul 2025 16:18  
 Operator : YP\AJ  
 Sample : PB168754BS  
 Misc :  
 ALS Vial : 19 Sample Multiplier: 1

**Instrument :**  
 ECD\_P  
**ClientSampleId :**  
 PB168754BS

Integration File signal 1: autoint1.e  
 Integration File signal 2: autoint2.e  
 Quant Time: Jul 09 01:41:56 2025  
 Quant Method : Z:\pestpcbsrv\HPCHEM1\ECD\_P\methods\PP070825.M  
 Quant Title : GC EXTRACTABLES  
 QLast Update : Tue Jul 08 08:35:32 2025  
 Response via : Initial Calibration  
 Integrator: ChemStation

Volume Inj. : 2 µl  
 Signal #1 Phase : ZB-MR1 Signal #2 Phase: ZB-MR2  
 Signal #1 Info : 30Mx0.32mmx 0.50µ Signal #2 Info : 30M x 0.32mm x 0.25µm

	Compound	RT#1	RT#2	Resp#1	Resp#2	ng/ml	ng/ml
42)	L9 AR-1268-2	8.766	7.733	20973831	63854209	110.096	240.335 #
43)	L9 AR-1268-3	9.012	7.938	1721185	1837223	10.395	8.144
44)	L9 AR-1268-4	9.431	8.232	14989534	20238839	215.541	217.697
45)	L9 AR-1268-5	9.842	8.527	4256718	6294791	9.234	10.210

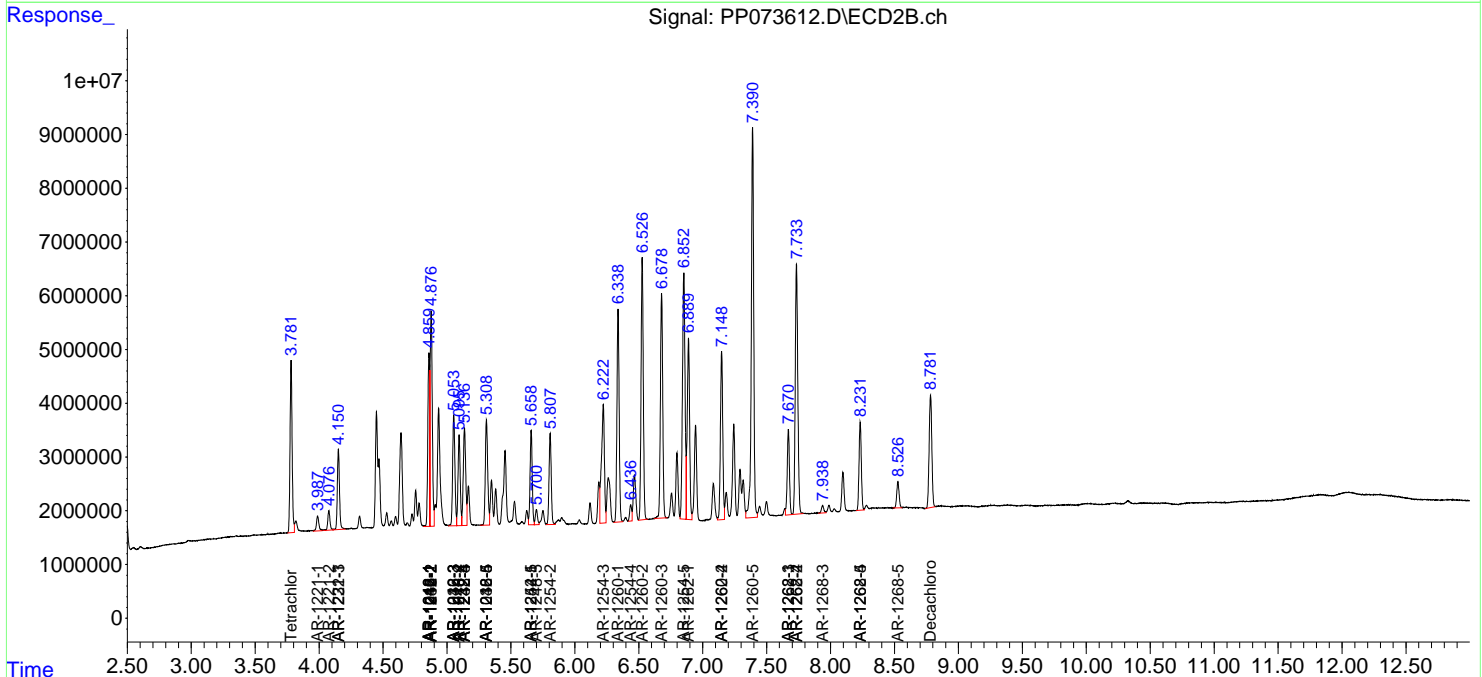
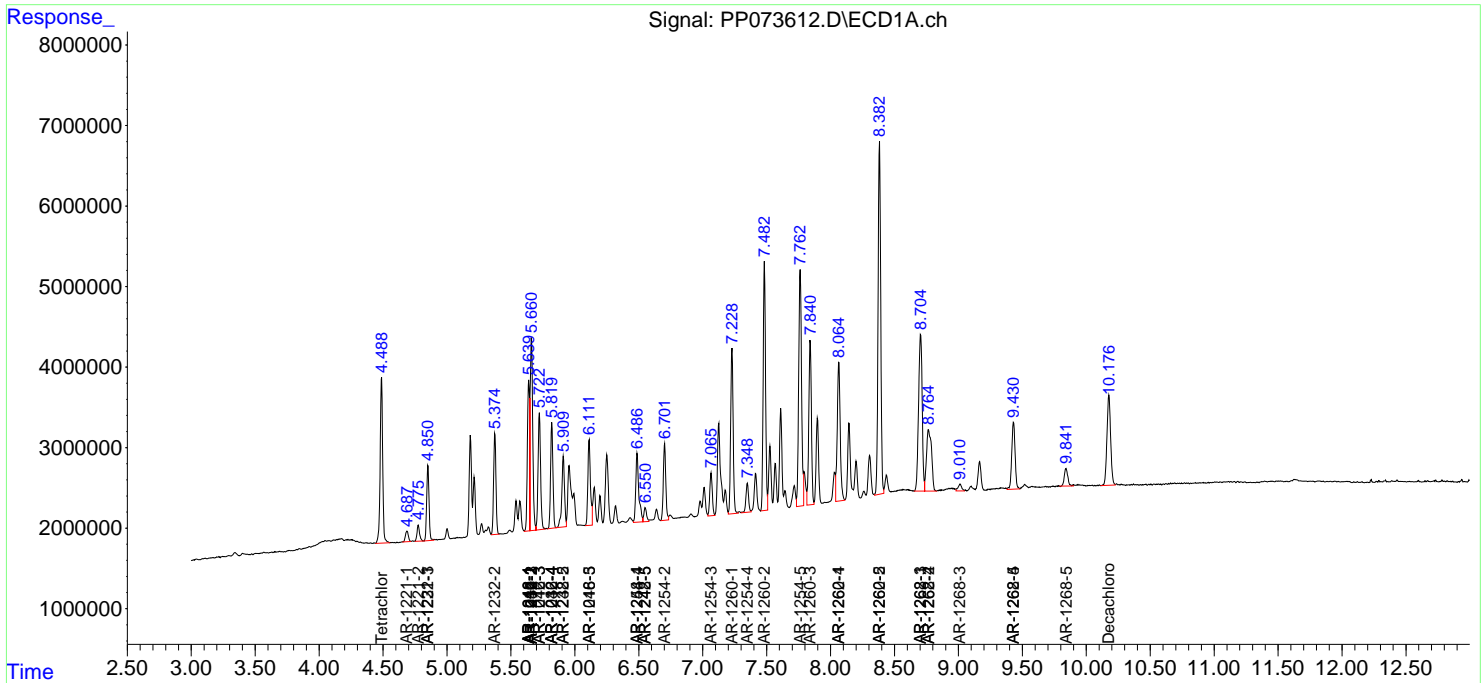
(f)=RT Delta > 1/2 Window (#)=Amounts differ by > 25% (m)=manual int.

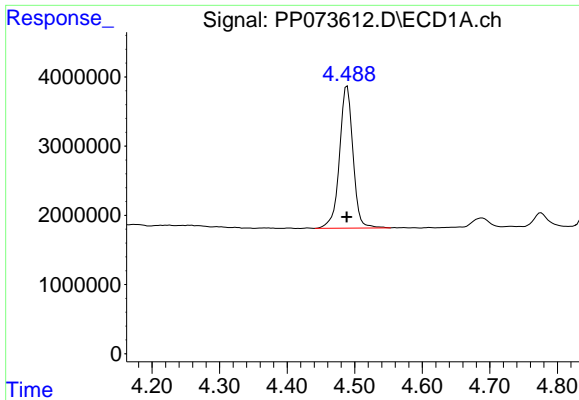
Data Path : Z:\pestpcbsrv\HPCHEM1\ECD\_P\Data\PP070925\  
 Data File : PP073612.D  
 Signal(s) : Signal #1: ECD1A.ch Signal #2: ECD2B.ch  
 Acq On : 08 Jul 2025 16:18  
 Operator : YP\AJ  
 Sample : PB168754BS  
 Misc :  
 ALS Vial : 19 Sample Multiplier: 1

Instrument :  
 ECD\_P  
 ClientSampleId :  
 PB168754BS

Integration File signal 1: autoint1.e  
 Integration File signal 2: autoint2.e  
 Quant Time: Jul 09 01:41:56 2025  
 Quant Method : Z:\pestpcbsrv\HPCHEM1\ECD\_P\methods\PP070825.M  
 Quant Title : GC EXTRACTABLES  
 QLast Update : Tue Jul 08 08:35:32 2025  
 Response via : Initial Calibration  
 Integrator: ChemStation

Volume Inj. : 2 µl  
 Signal #1 Phase : ZB-MR1 Signal #2 Phase: ZB-MR2  
 Signal #1 Info : 30Mx0.32mmx 0.50µ Signal #2 Info : 30M x 0.32mm x 0.25µm

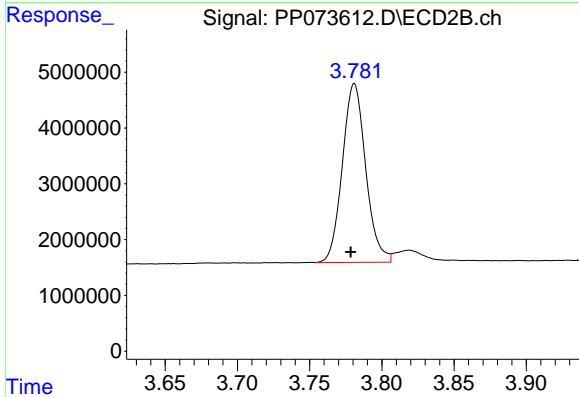




#1 Tetrachloro-m-xylene

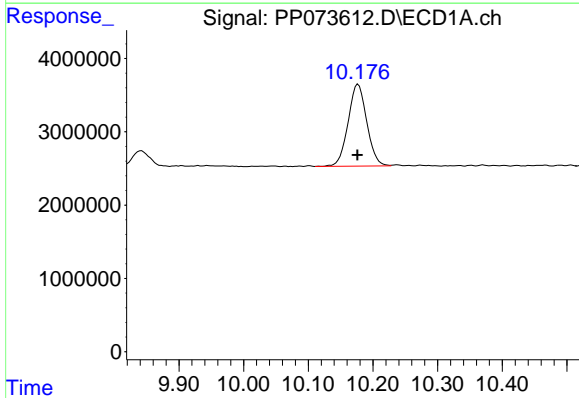
R.T.: 4.489 min  
 Delta R.T.: 0.000 min  
 Response: 28493875  
 Conc: 20.81 ng/ml

Instrument :  
 ECD\_P  
 ClientSampleId :  
 PB168754BS



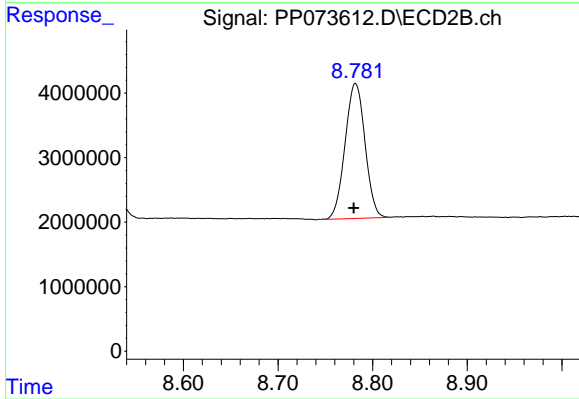
#1 Tetrachloro-m-xylene

R.T.: 3.781 min  
 Delta R.T.: 0.003 min  
 Response: 36090819  
 Conc: 19.59 ng/ml



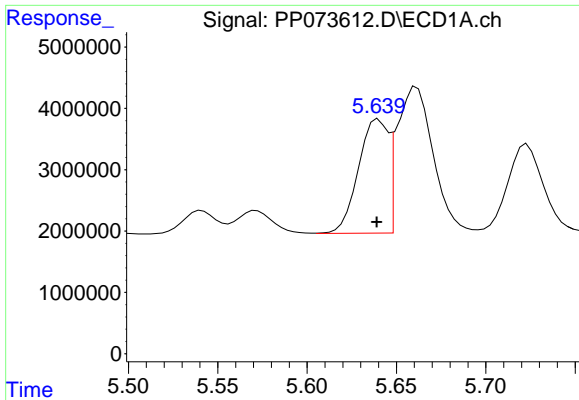
#2 Decachlorobiphenyl

R.T.: 10.177 min  
 Delta R.T.: 0.001 min  
 Response: 22373171  
 Conc: 20.51 ng/ml



#2 Decachlorobiphenyl

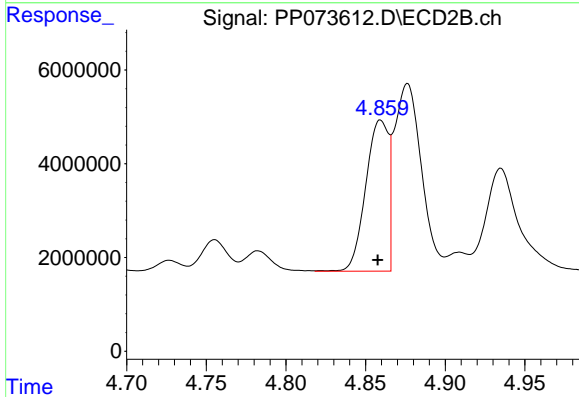
R.T.: 8.782 min  
 Delta R.T.: 0.002 min  
 Response: 30635568  
 Conc: 23.15 ng/ml



#3 AR-1016-1

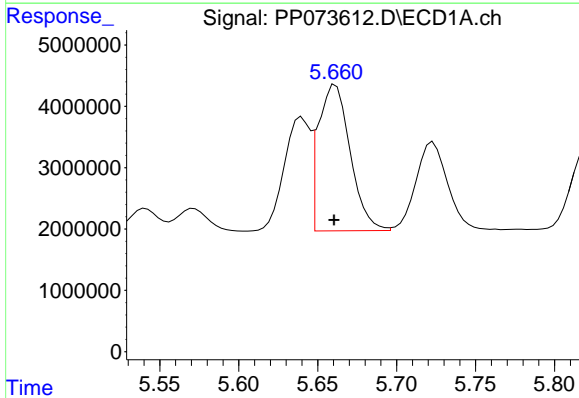
R.T.: 5.640 min  
 Delta R.T.: 0.001 min  
 Response: 21412519  
 Conc: 450.66 ng/ml

Instrument :  
 ECD\_P  
 ClientSampleId :  
 PB168754BS



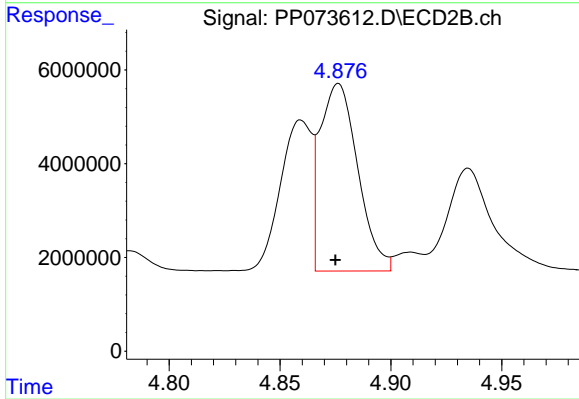
#3 AR-1016-1

R.T.: 4.859 min  
 Delta R.T.: 0.002 min  
 Response: 31822389  
 Conc: 466.78 ng/ml



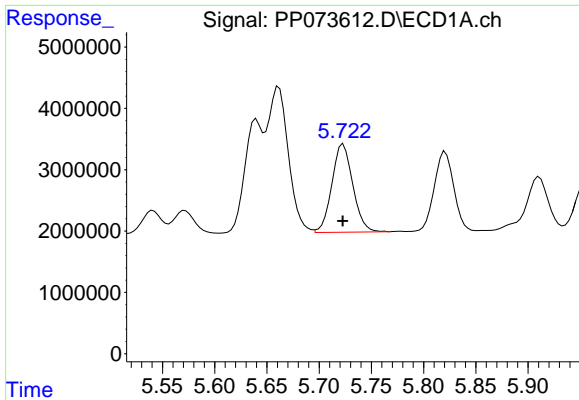
#4 AR-1016-2

R.T.: 5.661 min  
 Delta R.T.: 0.000 min  
 Response: 33533792  
 Conc: 470.88 ng/ml



#4 AR-1016-2

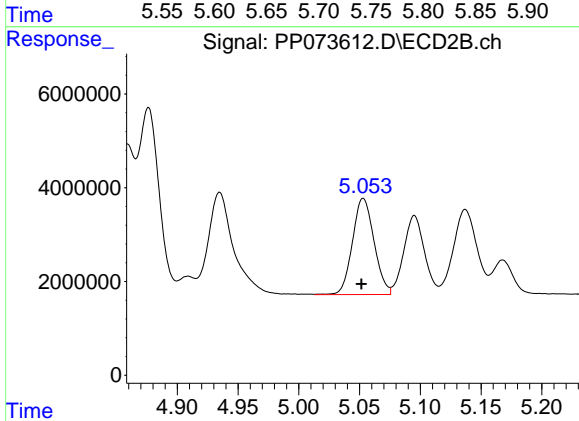
R.T.: 4.876 min  
 Delta R.T.: 0.001 min  
 Response: 47370486  
 Conc: 464.94 ng/ml



#5 AR-1016-3

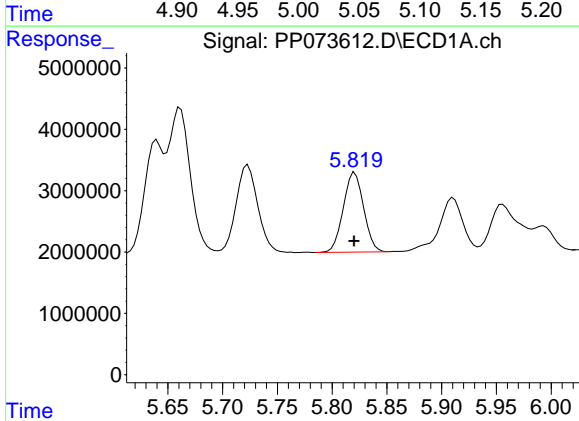
R.T.: 5.723 min  
 Delta R.T.: 0.000 min  
 Response: 20021431  
 Conc: 458.54 ng/ml

Instrument :  
 ECD\_P  
 ClientSampleId :  
 PB168754BS



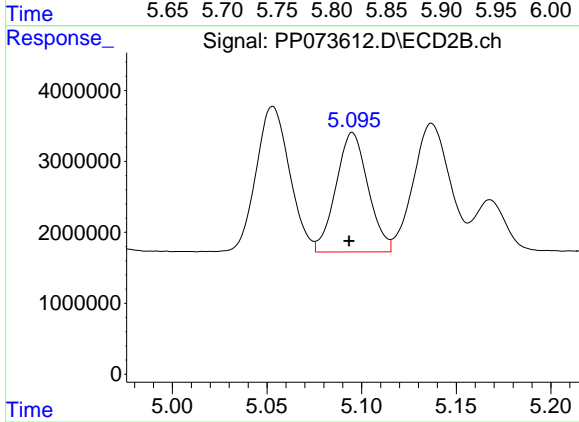
#5 AR-1016-3

R.T.: 5.053 min  
 Delta R.T.: 0.002 min  
 Response: 25430534  
 Conc: 470.01 ng/ml



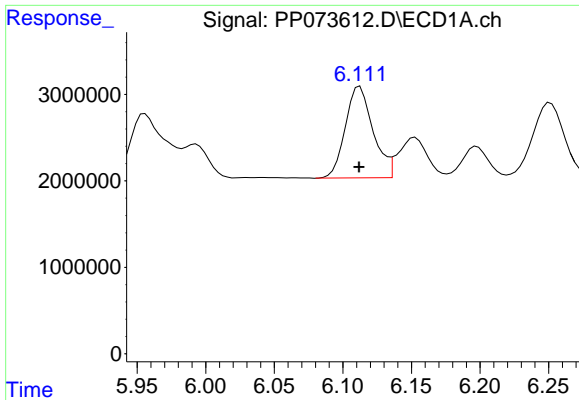
#6 AR-1016-4

R.T.: 5.821 min  
 Delta R.T.: 0.000 min  
 Response: 16781899  
 Conc: 466.87 ng/ml



#6 AR-1016-4

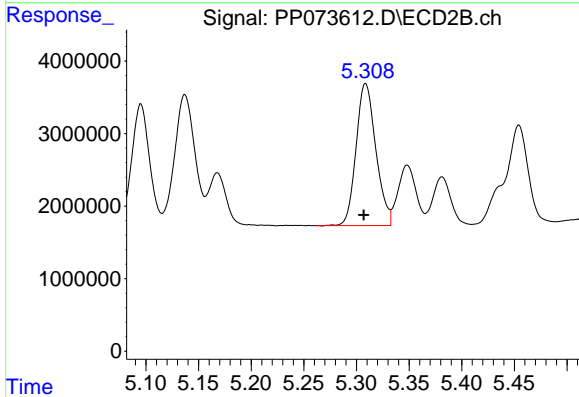
R.T.: 5.095 min  
 Delta R.T.: 0.002 min  
 Response: 19927552  
 Conc: 454.13 ng/ml



#7 AR-1016-5

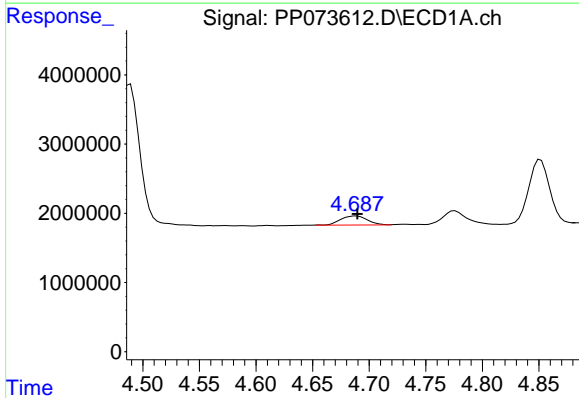
R.T.: 6.112 min  
 Delta R.T.: 0.000 min  
 Response: 14888491  
 Conc: 475.21 ng/ml

Instrument :  
 ECD\_P  
 ClientSampleId :  
 PB168754BS



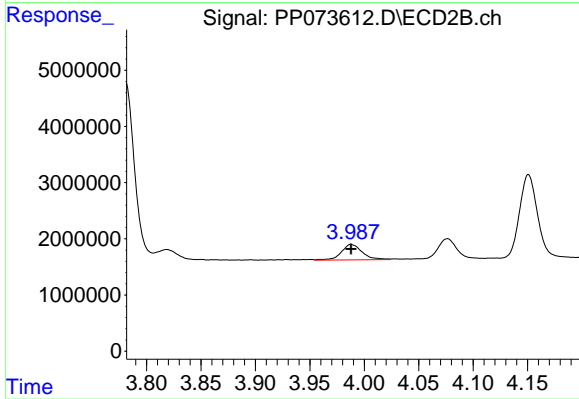
#7 AR-1016-5

R.T.: 5.309 min  
 Delta R.T.: 0.002 min  
 Response: 25611418  
 Conc: 469.22 ng/ml



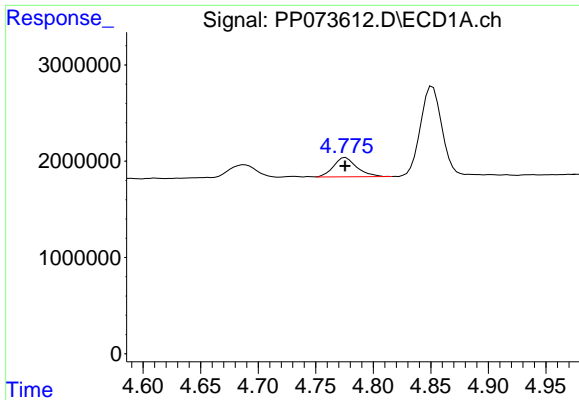
#8 AR-1221-1

R.T.: 4.688 min  
 Delta R.T.: -0.001 min  
 Response: 2120901  
 Conc: 118.71 ng/ml



#8 AR-1221-1

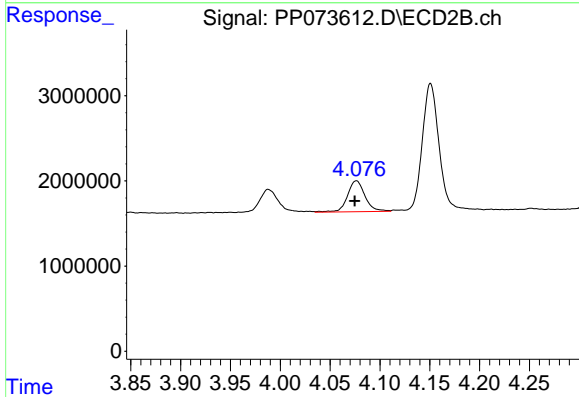
R.T.: 3.988 min  
 Delta R.T.: 0.000 min  
 Response: 3697815  
 Conc: 136.73 ng/ml



#9 AR-1221-2

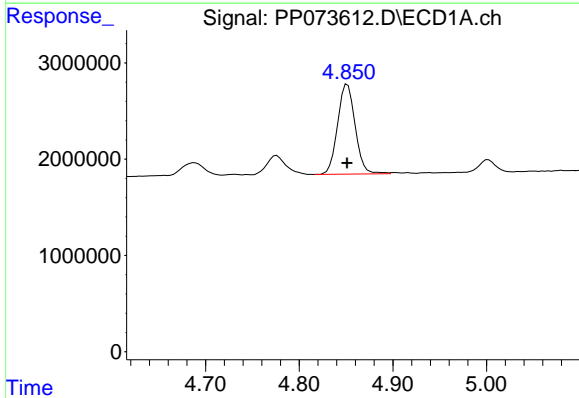
R.T.: 4.776 min  
 Delta R.T.: 0.000 min  
 Response: 2819168  
 Conc: 208.76 ng/ml

Instrument :  
 ECD\_P  
 ClientSampleId :  
 PB168754BS



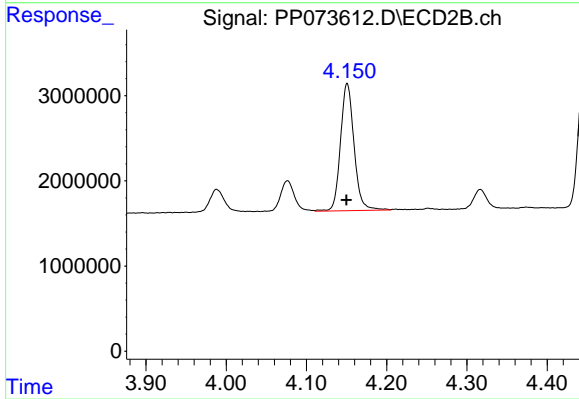
#9 AR-1221-2

R.T.: 4.076 min  
 Delta R.T.: 0.002 min  
 Response: 4451729  
 Conc: 218.65 ng/ml



#10 AR-1221-3

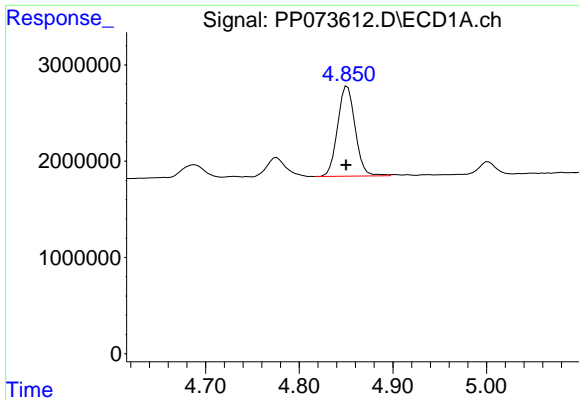
R.T.: 4.851 min  
 Delta R.T.: 0.000 min  
 Response: 12190565  
 Conc: 293.01 ng/ml



#10 AR-1221-3

R.T.: 4.151 min  
 Delta R.T.: 0.000 min  
 Response: 17535159  
 Conc: 285.36 ng/ml

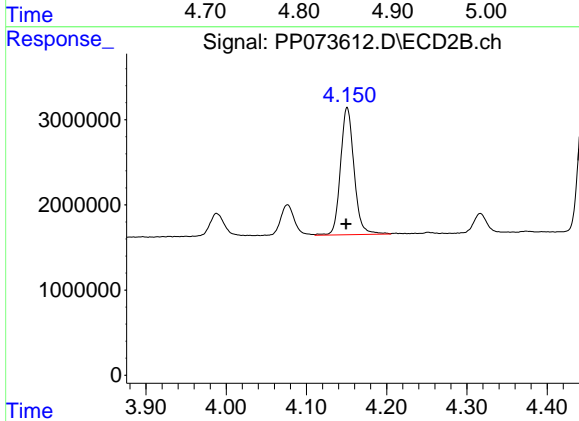




#11 AR-1232-1

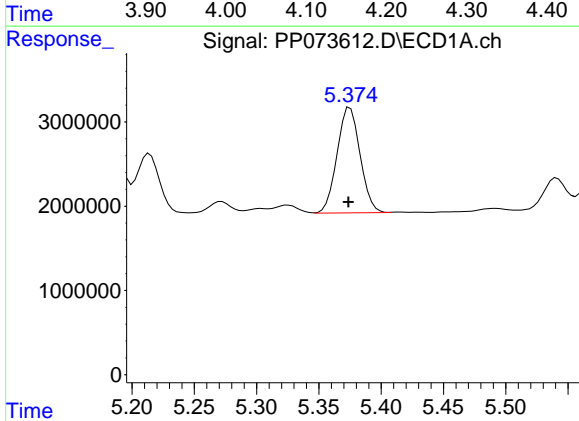
R.T.: 4.851 min  
 Delta R.T.: 0.001 min  
 Response: 12190565  
 Conc: 373.36 ng/ml

Instrument :  
 ECD\_P  
 ClientSampleId :  
 PB168754BS



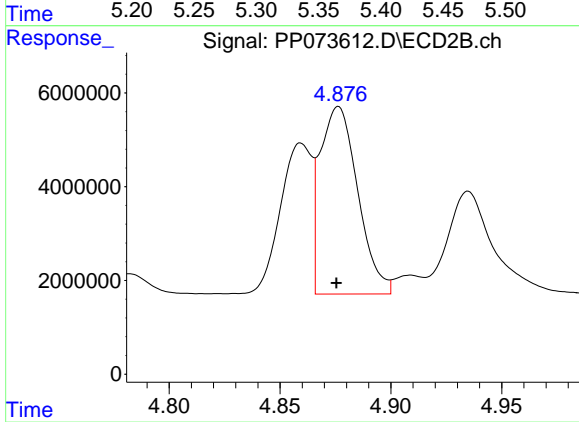
#11 AR-1232-1

R.T.: 4.151 min  
 Delta R.T.: 0.001 min  
 Response: 17535159  
 Conc: 376.18 ng/ml



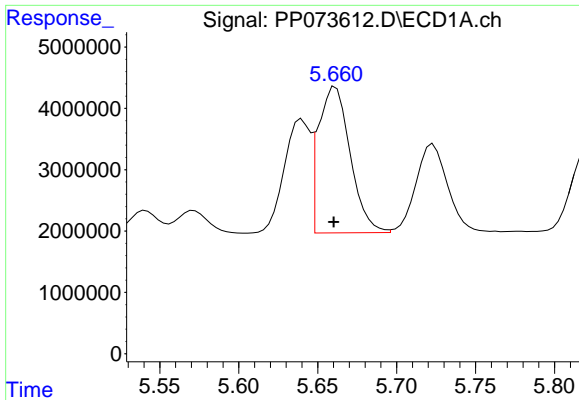
#12 AR-1232-2

R.T.: 5.375 min  
 Delta R.T.: 0.001 min  
 Response: 16101258  
 Conc: 990.56 ng/ml



#12 AR-1232-2

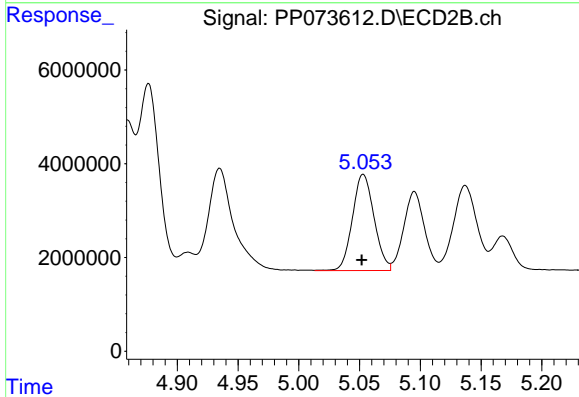
R.T.: 4.876 min  
 Delta R.T.: 0.000 min  
 Response: 47370486  
 Conc: 993.93 ng/ml



#13 AR-1232-3

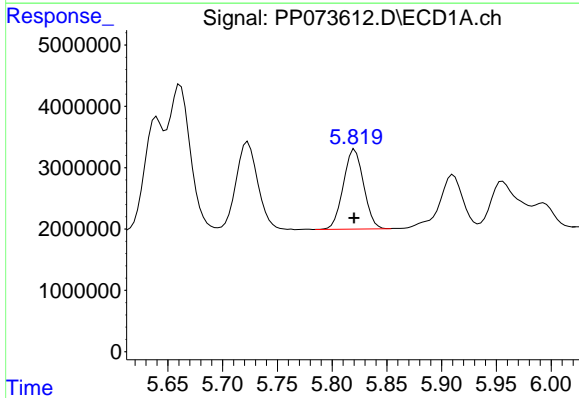
R.T.: 5.661 min  
 Delta R.T.: 0.001 min  
 Response: 33533792  
 Conc: 1016.38 ng/ml

Instrument :  
 ECD\_P  
 ClientSampleId :  
 PB168754BS



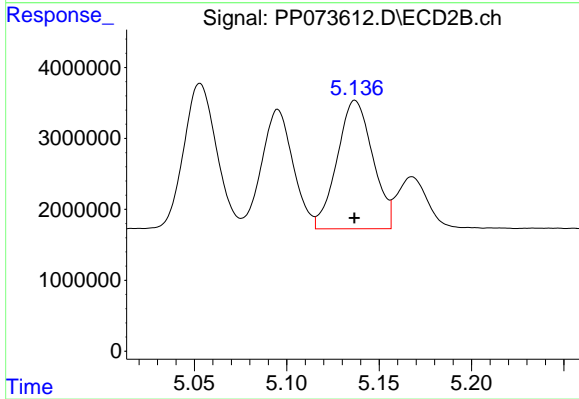
#13 AR-1232-3

R.T.: 5.053 min  
 Delta R.T.: 0.001 min  
 Response: 25430534  
 Conc: 1016.04 ng/ml



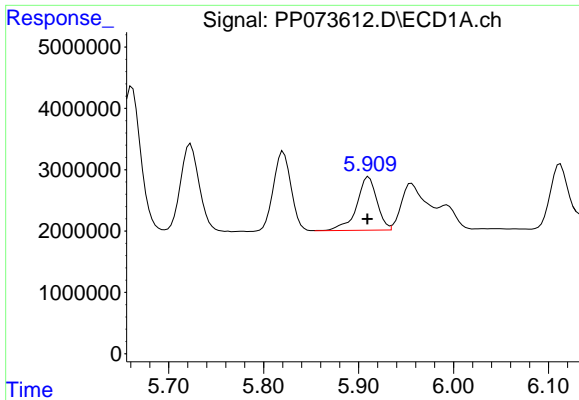
#14 AR-1232-4

R.T.: 5.821 min  
 Delta R.T.: 0.000 min  
 Response: 16781899  
 Conc: 1020.48 ng/ml



#14 AR-1232-4

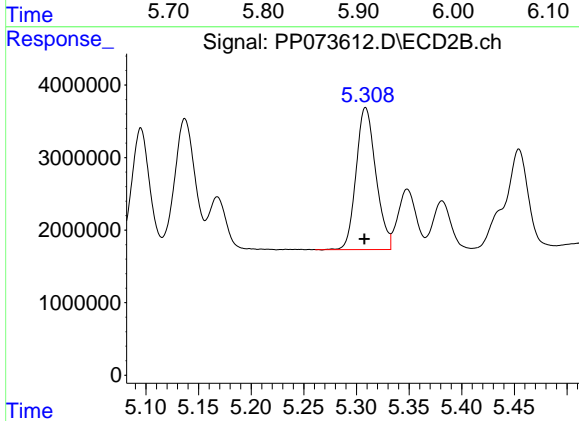
R.T.: 5.137 min  
 Delta R.T.: 0.000 min  
 Response: 24280536  
 Conc: 1121.18 ng/ml



#15 AR-1232-5

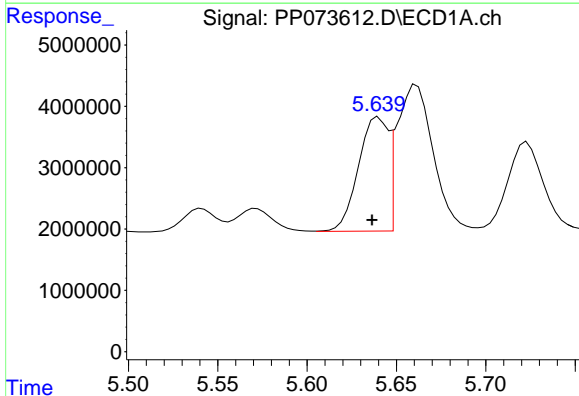
R.T.: 5.911 min  
 Delta R.T.: 0.001 min  
 Response: 12897262  
 Conc: 1220.13 ng/ml

Instrument :  
 ECD\_P  
 ClientSampleId :  
 PB168754BS



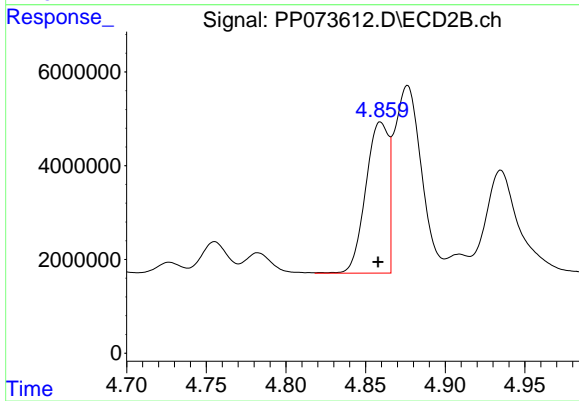
#15 AR-1232-5

R.T.: 5.309 min  
 Delta R.T.: 0.000 min  
 Response: 25611418  
 Conc: 1135.08 ng/ml



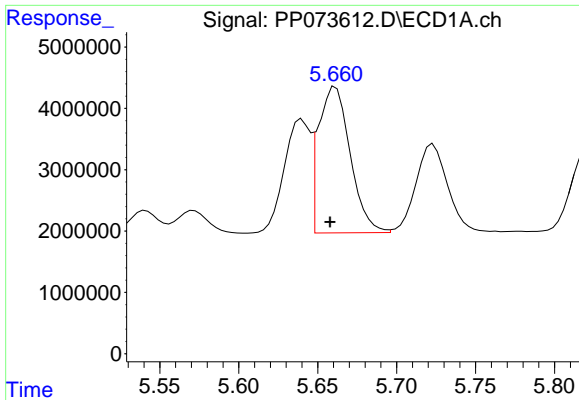
#16 AR-1242-1

R.T.: 5.640 min  
 Delta R.T.: 0.004 min  
 Response: 21412519  
 Conc: 560.71 ng/ml



#16 AR-1242-1

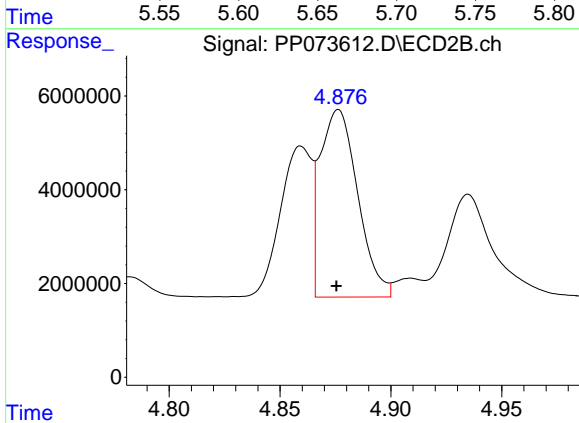
R.T.: 4.859 min  
 Delta R.T.: 0.002 min  
 Response: 31822389  
 Conc: 550.90 ng/ml



#17 AR-1242-2

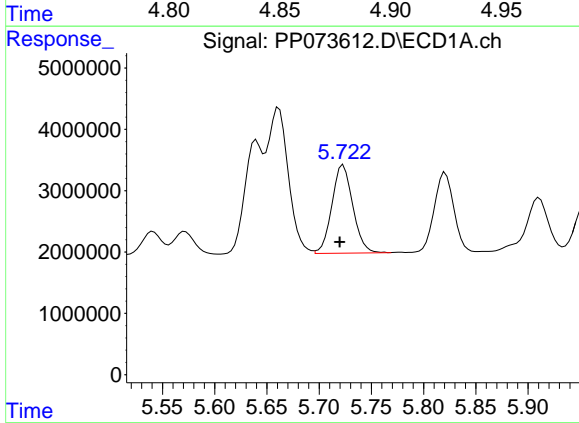
R.T.: 5.661 min  
 Delta R.T.: 0.004 min  
 Response: 33533792  
 Conc: 560.00 ng/ml

Instrument :  
 ECD\_P  
 ClientSampleId :  
 PB168754BS



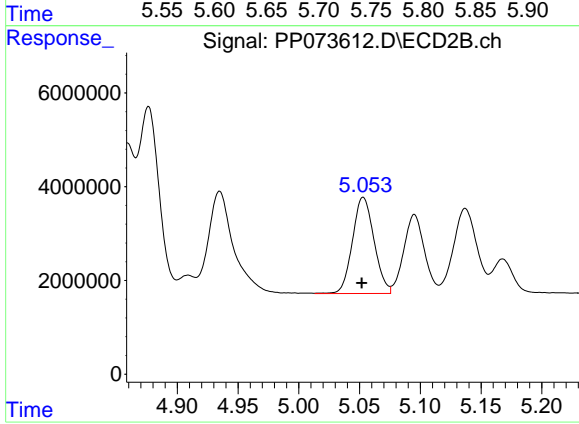
#17 AR-1242-2

R.T.: 4.876 min  
 Delta R.T.: 0.000 min  
 Response: 47370486  
 Conc: 547.93 ng/ml



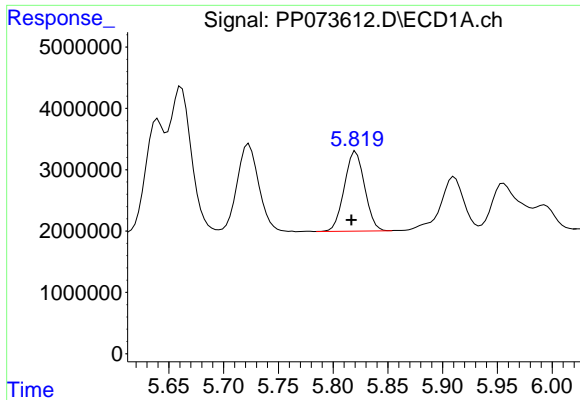
#18 AR-1242-3

R.T.: 5.723 min  
 Delta R.T.: 0.003 min  
 Response: 20021431  
 Conc: 546.72 ng/ml



#18 AR-1242-3

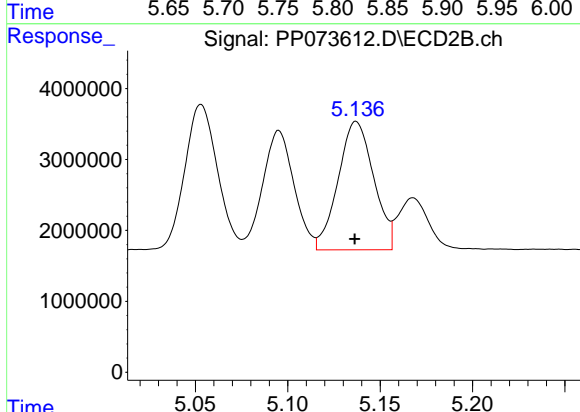
R.T.: 5.053 min  
 Delta R.T.: 0.001 min  
 Response: 25430534  
 Conc: 553.48 ng/ml



#19 AR-1242-4

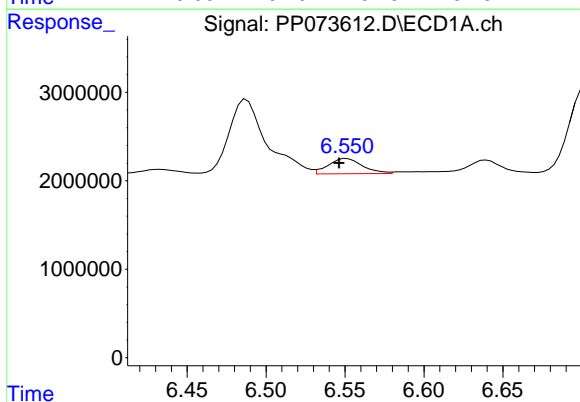
R.T.: 5.821 min  
 Delta R.T.: 0.004 min  
 Response: 16781899  
 Conc: 522.21 ng/ml

Instrument :  
 ECD\_P  
 ClientSampleId :  
 PB168754BS



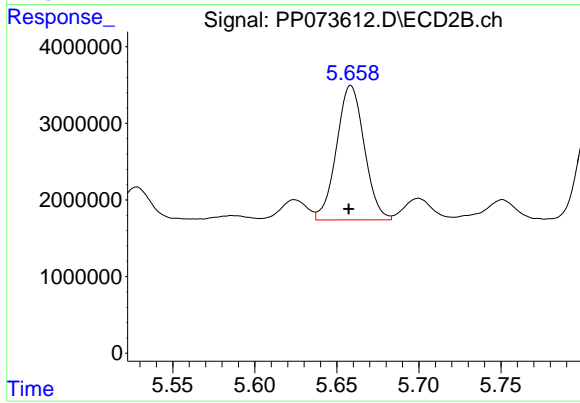
#19 AR-1242-4

R.T.: 5.137 min  
 Delta R.T.: 0.000 min  
 Response: 24280536  
 Conc: 548.55 ng/ml



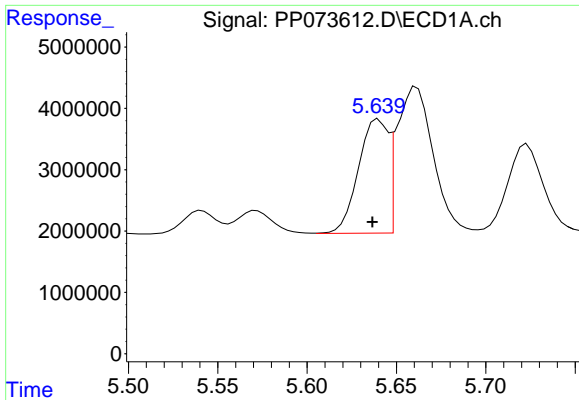
#20 AR-1242-5

R.T.: 6.551 min  
 Delta R.T.: 0.005 min  
 Response: 2580107  
 Conc: 78.81 ng/ml



#20 AR-1242-5

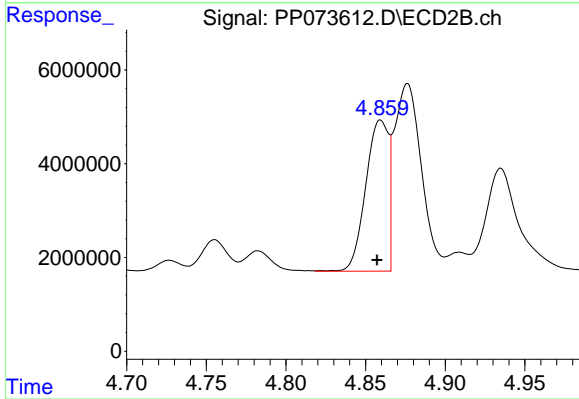
R.T.: 5.659 min  
 Delta R.T.: 0.001 min  
 Response: 20674449  
 Conc: 374.25 ng/ml



#21 AR-1248-1

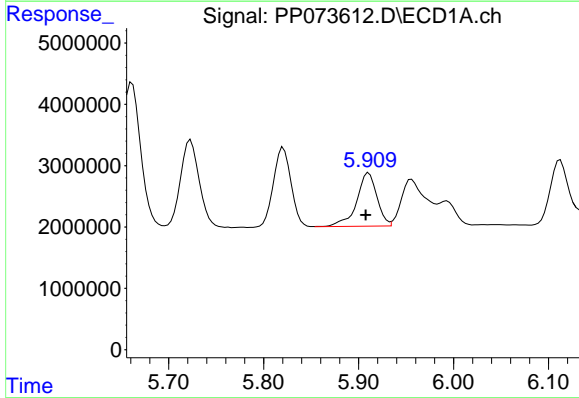
R.T.: 5.640 min  
 Delta R.T.: 0.003 min  
 Response: 21412519  
 Conc: 693.62 ng/ml

Instrument :  
 ECD\_P  
 ClientSampleId :  
 PB168754BS



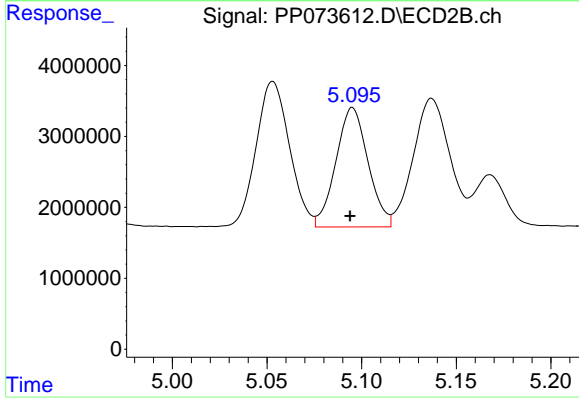
#21 AR-1248-1

R.T.: 4.859 min  
 Delta R.T.: 0.002 min  
 Response: 31822389  
 Conc: 708.82 ng/ml



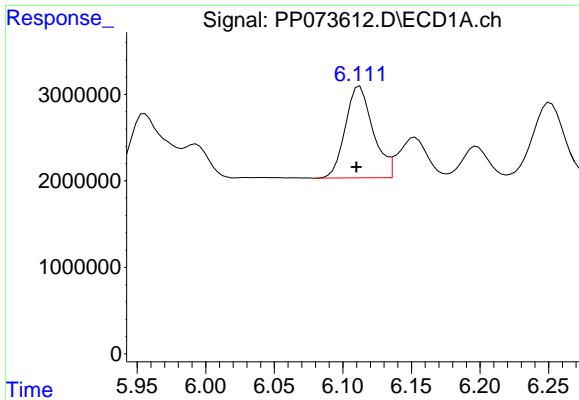
#22 AR-1248-2

R.T.: 5.911 min  
 Delta R.T.: 0.003 min  
 Response: 12897262  
 Conc: 323.05 ng/ml



#22 AR-1248-2

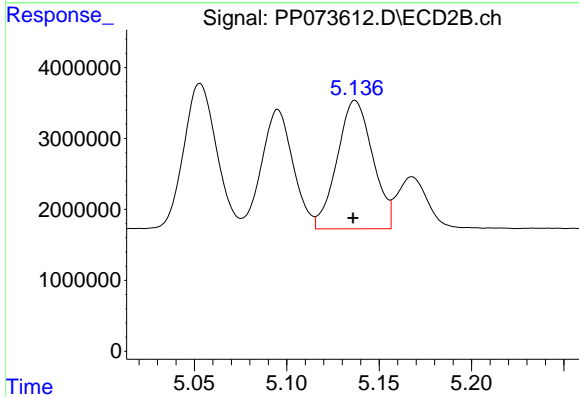
R.T.: 5.095 min  
 Delta R.T.: 0.001 min  
 Response: 19927552  
 Conc: 323.83 ng/ml



#23 AR-1248-3

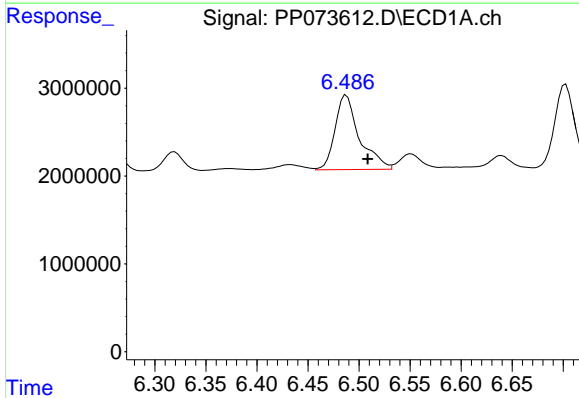
R.T.: 6.112 min  
 Delta R.T.: 0.003 min  
 Response: 14888491  
 Conc: 335.25 ng/ml

Instrument :  
 ECD\_P  
 ClientSampleId :  
 PB168754BS



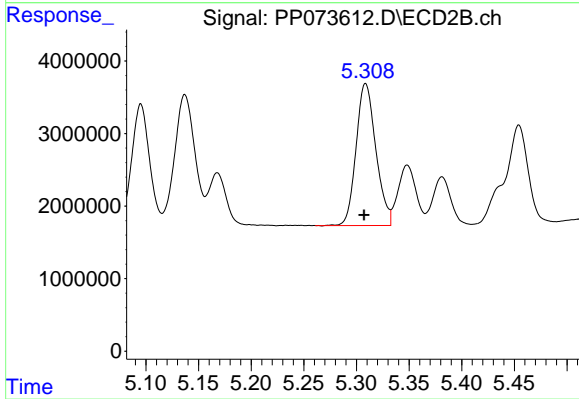
#23 AR-1248-3

R.T.: 5.137 min  
 Delta R.T.: 0.001 min  
 Response: 24280536  
 Conc: 379.00 ng/ml



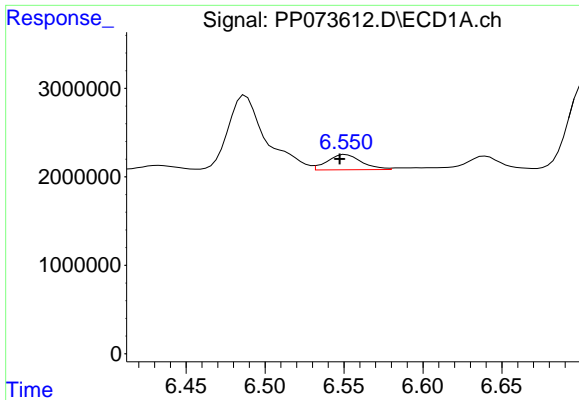
#24 AR-1248-4

R.T.: 6.488 min  
 Delta R.T.: -0.021 min  
 Response: 14084893  
 Conc: 255.71 ng/ml



#24 AR-1248-4

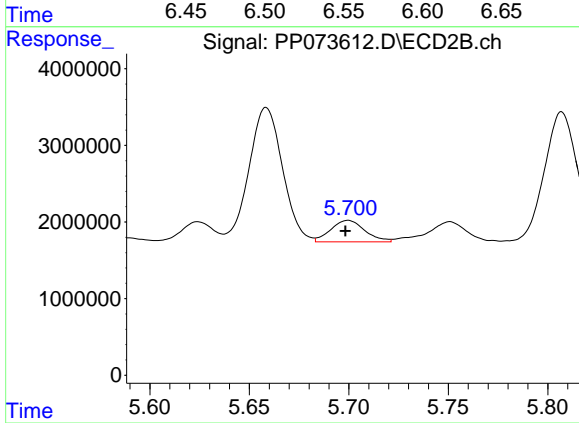
R.T.: 5.309 min  
 Delta R.T.: 0.001 min  
 Response: 25611418  
 Conc: 339.78 ng/ml



#25 AR-1248-5

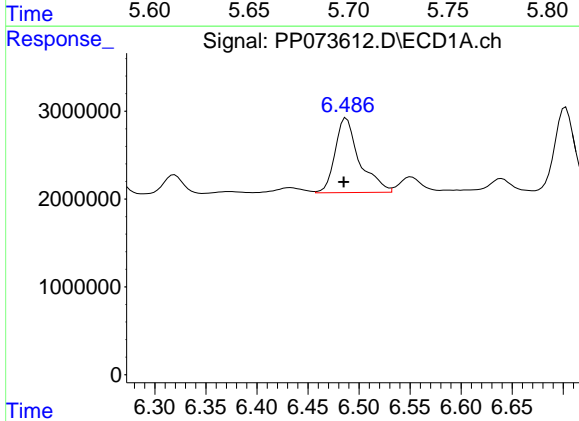
R.T.: 6.551 min  
 Delta R.T.: 0.004 min  
 Response: 2580107  
 Conc: 47.97 ng/ml

Instrument :  
 ECD\_P  
 ClientSampleId :  
 PB168754BS



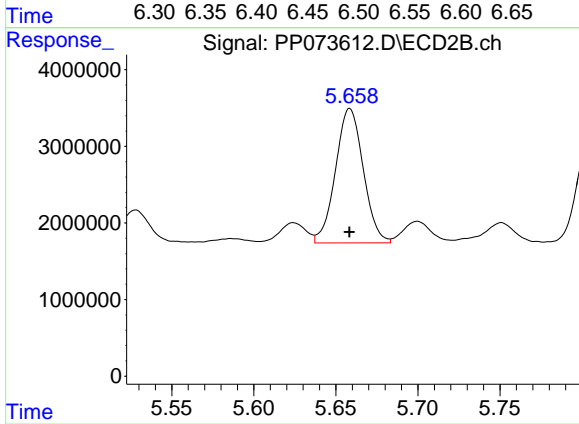
#25 AR-1248-5

R.T.: 5.700 min  
 Delta R.T.: 0.001 min  
 Response: 3369272  
 Conc: 45.17 ng/ml



#26 AR-1254-1

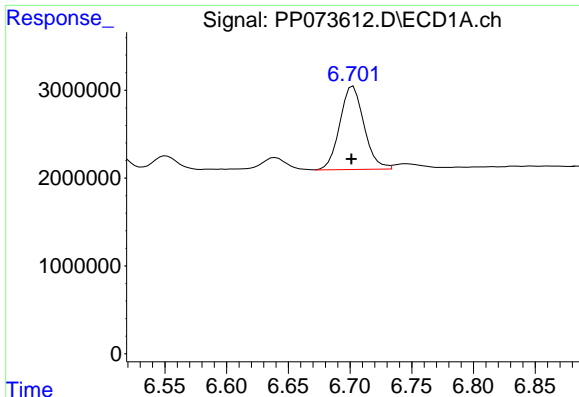
R.T.: 6.488 min  
 Delta R.T.: 0.003 min  
 Response: 14084893  
 Conc: 262.83 ng/ml



#26 AR-1254-1

R.T.: 5.659 min  
 Delta R.T.: 0.000 min  
 Response: 20674449  
 Conc: 178.18 ng/ml

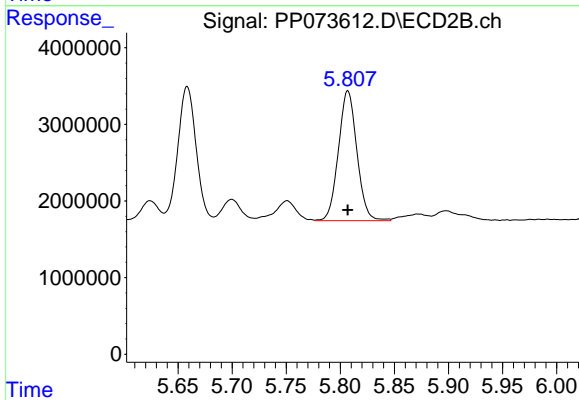




#27 AR-1254-2

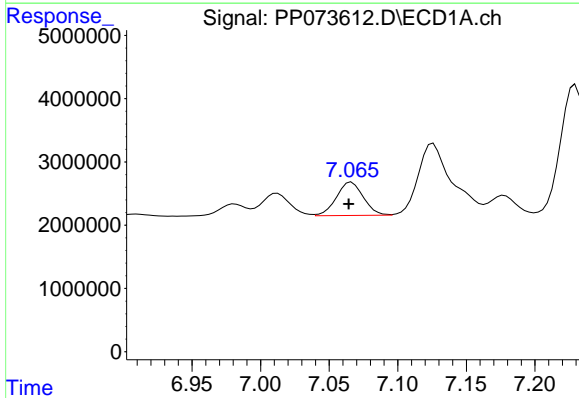
R.T.: 6.703 min  
 Delta R.T.: 0.001 min  
 Response: 12933251  
 Conc: 155.28 ng/ml

Instrument :  
 ECD\_P  
 ClientSampleId :  
 PB168754BS



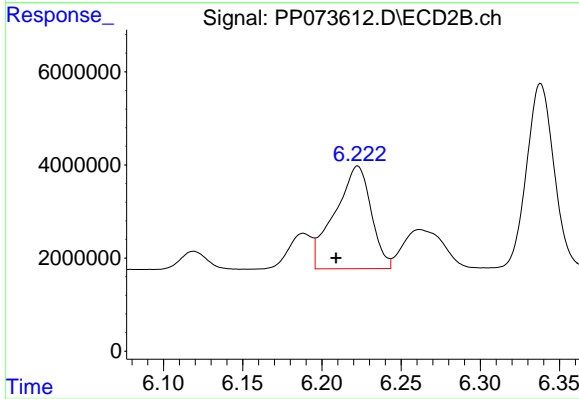
#27 AR-1254-2

R.T.: 5.807 min  
 Delta R.T.: 0.000 min  
 Response: 20179622  
 Conc: 200.55 ng/ml



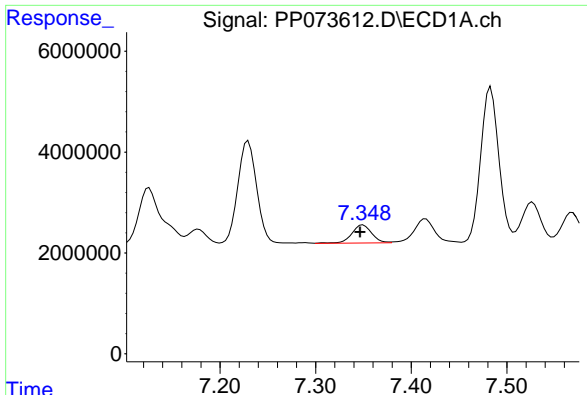
#28 AR-1254-3

R.T.: 7.066 min  
 Delta R.T.: 0.002 min  
 Response: 7186931  
 Conc: 81.36 ng/ml



#28 AR-1254-3

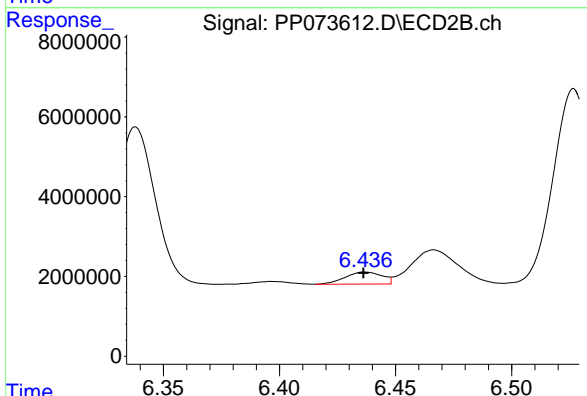
R.T.: 6.223 min  
 Delta R.T.: 0.014 min  
 Response: 35192560  
 Conc: 227.86 ng/ml



#29 AR-1254-4

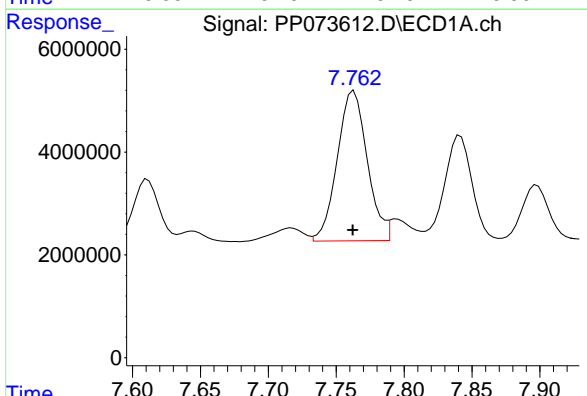
R.T.: 7.350 min  
 Delta R.T.: 0.003 min  
 Response: 5190468  
 Conc: 65.98 ng/ml

Instrument :  
 ECD\_P  
 ClientSampleId :  
 PB168754BS



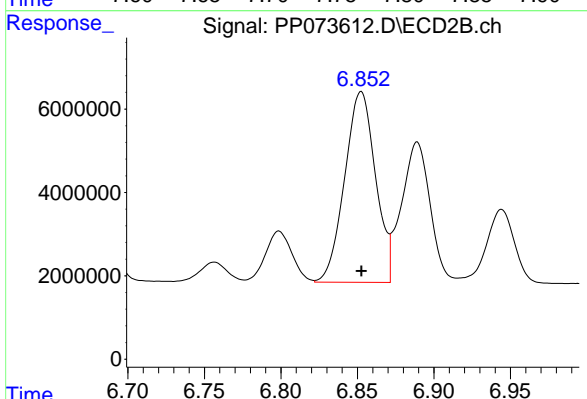
#29 AR-1254-4

R.T.: 6.437 min  
 Delta R.T.: 0.000 min  
 Response: 3329822  
 Conc: 35.21 ng/ml



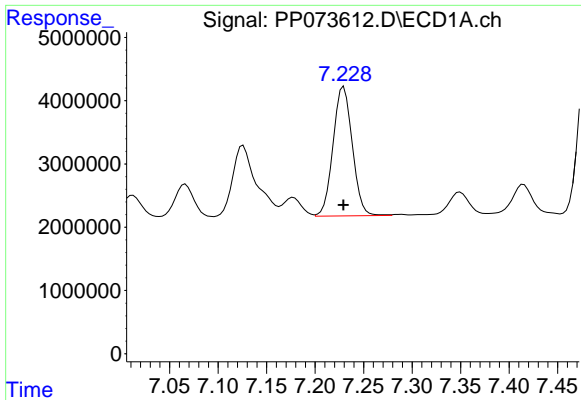
#30 AR-1254-5

R.T.: 7.763 min  
 Delta R.T.: 0.000 min  
 Response: 44891317  
 Conc: 609.28 ng/ml



#30 AR-1254-5

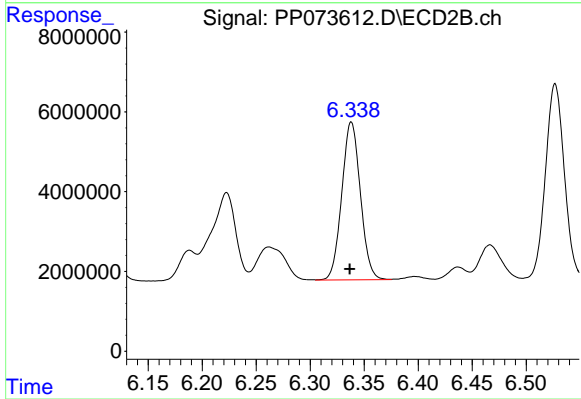
R.T.: 6.852 min  
 Delta R.T.: 0.000 min  
 Response: 64217579  
 Conc: 481.23 ng/ml



#31 AR-1260-1

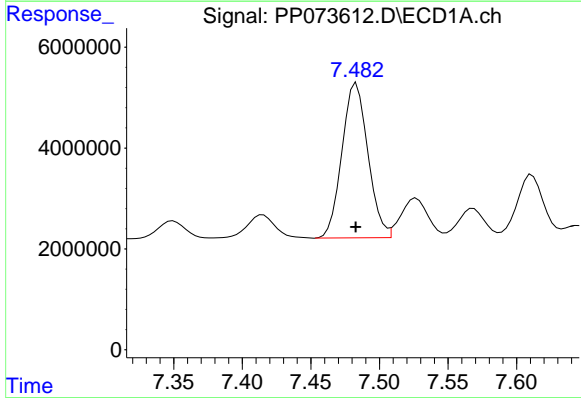
R.T.: 7.230 min  
 Delta R.T.: 0.000 min  
 Response: 28166661  
 Conc: 477.71 ng/ml

Instrument :  
 ECD\_P  
 ClientSampleId :  
 PB168754BS



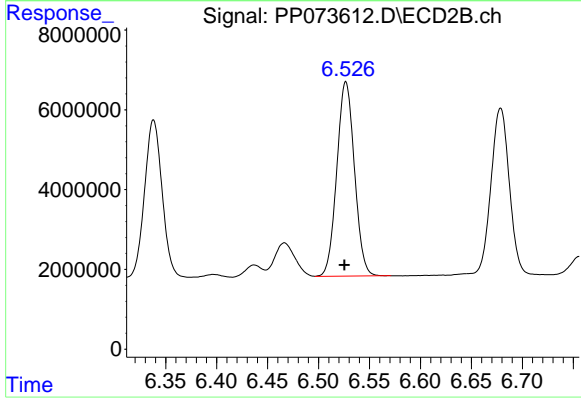
#31 AR-1260-1

R.T.: 6.338 min  
 Delta R.T.: 0.001 min  
 Response: 47421134  
 Conc: 486.07 ng/ml



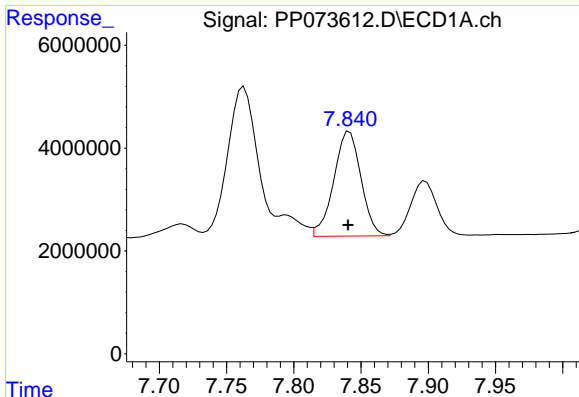
#32 AR-1260-2

R.T.: 7.483 min  
 Delta R.T.: 0.000 min  
 Response: 40449930  
 Conc: 422.06 ng/ml



#32 AR-1260-2

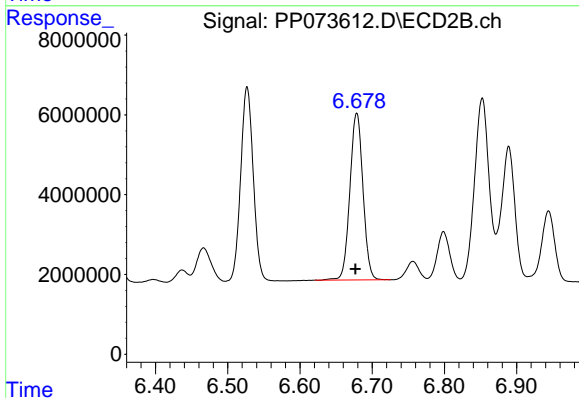
R.T.: 6.527 min  
 Delta R.T.: 0.002 min  
 Response: 58764582  
 Conc: 478.39 ng/ml



#33 AR-1260-3

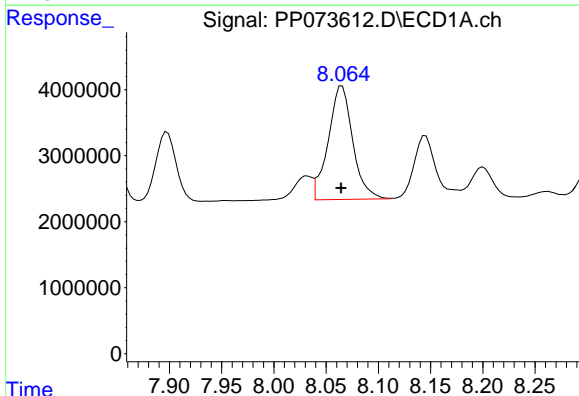
R.T.: 7.841 min  
 Delta R.T.: 0.001 min  
 Response: 28583372  
 Conc: 391.17 ng/ml

Instrument :  
 ECD\_P  
 ClientSampleId :  
 PB168754BS



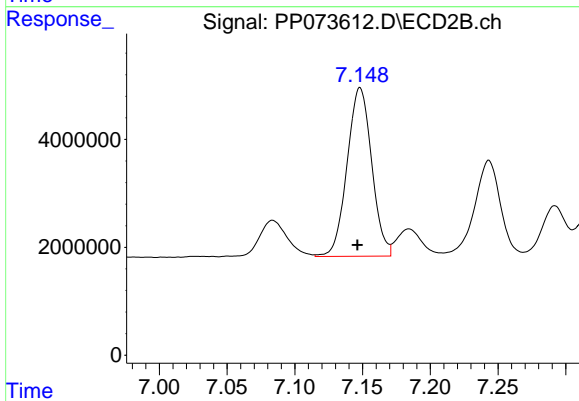
#33 AR-1260-3

R.T.: 6.679 min  
 Delta R.T.: 0.002 min  
 Response: 52568182  
 Conc: 480.23 ng/ml



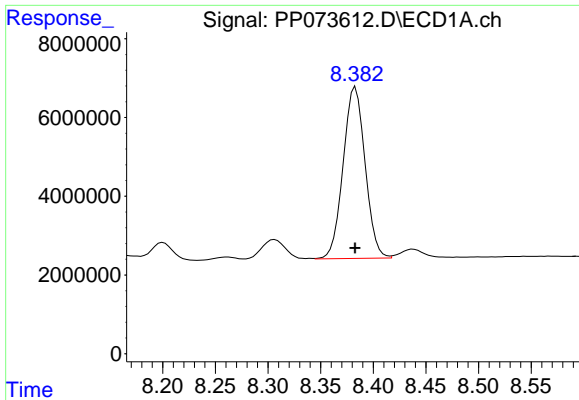
#34 AR-1260-4

R.T.: 8.065 min  
 Delta R.T.: 0.001 min  
 Response: 28068380  
 Conc: 429.84 ng/ml



#34 AR-1260-4

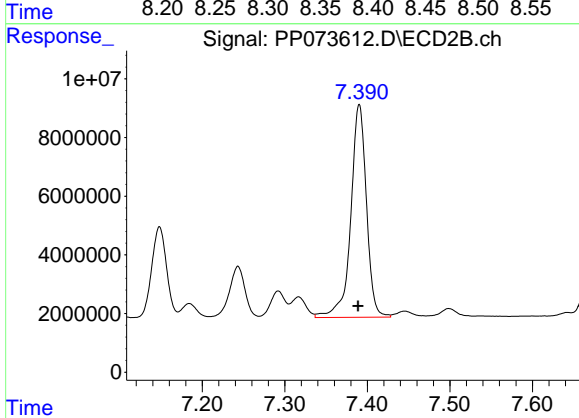
R.T.: 7.148 min  
 Delta R.T.: 0.002 min  
 Response: 39550582  
 Conc: 442.36 ng/ml



#35 AR-1260-5

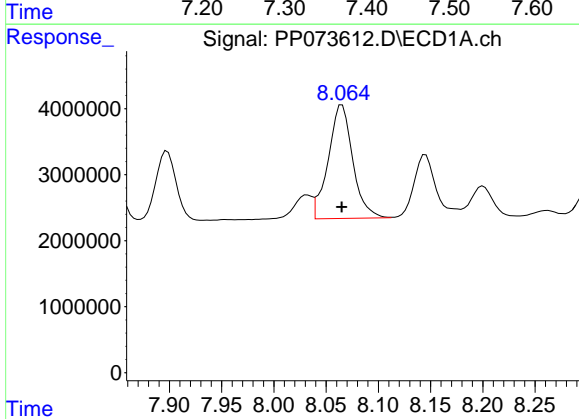
R.T.: 8.383 min  
 Delta R.T.: 0.000 min  
 Response: 63392135  
 Conc: 420.23 ng/ml

Instrument :  
 ECD\_P  
 ClientSampleId :  
 PB168754BS



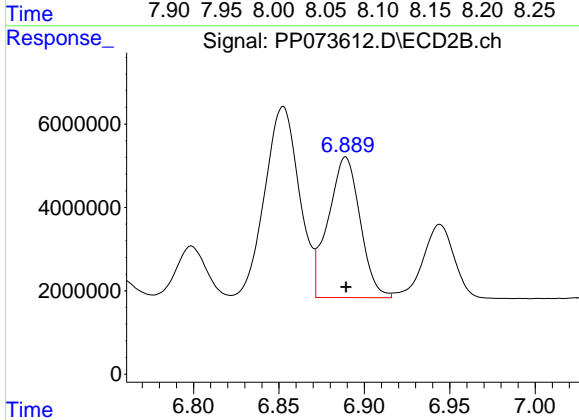
#35 AR-1260-5

R.T.: 7.390 min  
 Delta R.T.: 0.001 min  
 Response: 95768861  
 Conc: 426.14 ng/ml



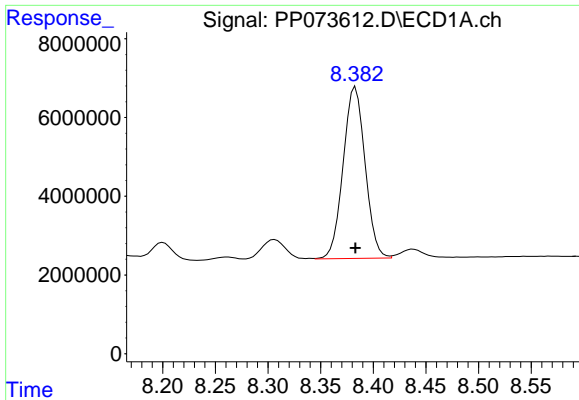
#36 AR-1262-1

R.T.: 8.065 min  
 Delta R.T.: 0.000 min  
 Response: 28068380  
 Conc: 322.52 ng/ml



#36 AR-1262-1

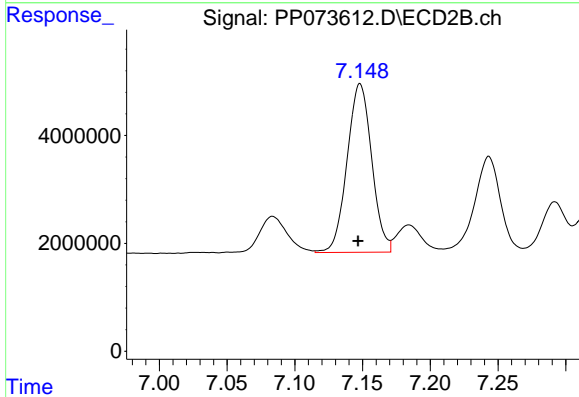
R.T.: 6.889 min  
 Delta R.T.: 0.000 min  
 Response: 43914324  
 Conc: 297.34 ng/ml



#37 AR-1262-2

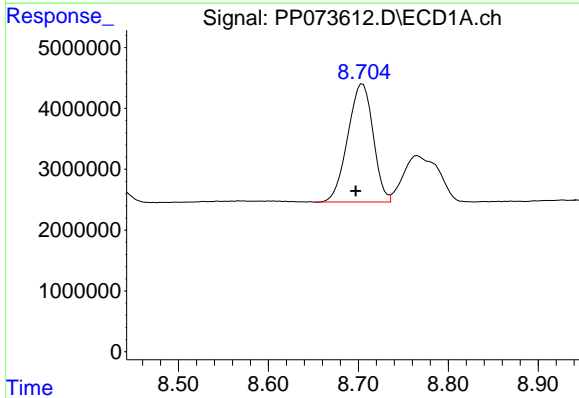
R.T.: 8.383 min  
 Delta R.T.: 0.000 min  
 Response: 63392135  
 Conc: 320.12 ng/ml

Instrument :  
 ECD\_P  
 ClientSampleId :  
 PB168754BS



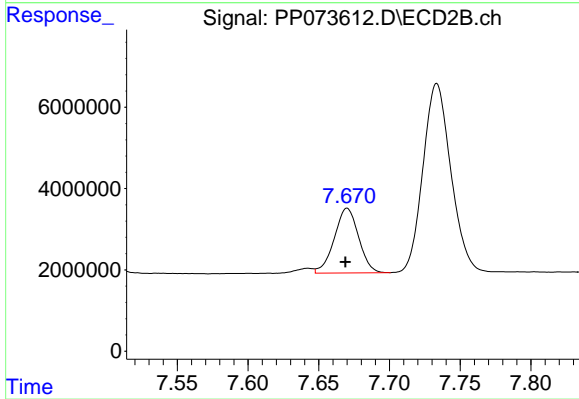
#37 AR-1262-2

R.T.: 7.148 min  
 Delta R.T.: 0.001 min  
 Response: 39550582  
 Conc: 309.40 ng/ml



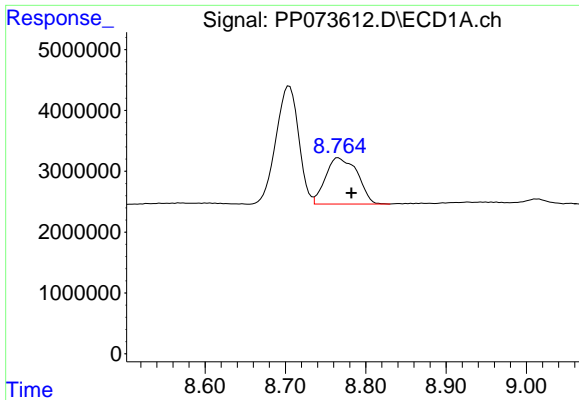
#38 AR-1262-3

R.T.: 8.705 min  
 Delta R.T.: 0.008 min  
 Response: 38044251  
 Conc: 302.60 ng/ml



#38 AR-1262-3

R.T.: 7.670 min  
 Delta R.T.: 0.001 min  
 Response: 19121857  
 Conc: 167.71 ng/ml

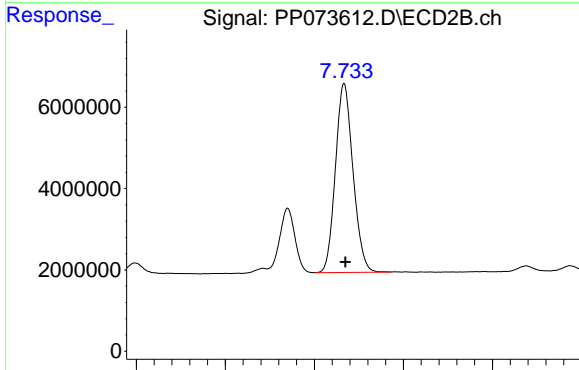


#39 AR-1262-4

R.T.: 8.766 min  
Delta R.T.: -0.016 min  
Response: 20973831  
Conc: 224.89 ng/ml

Instrument :  
ECD\_P  
ClientSampleId :  
PB168754BS

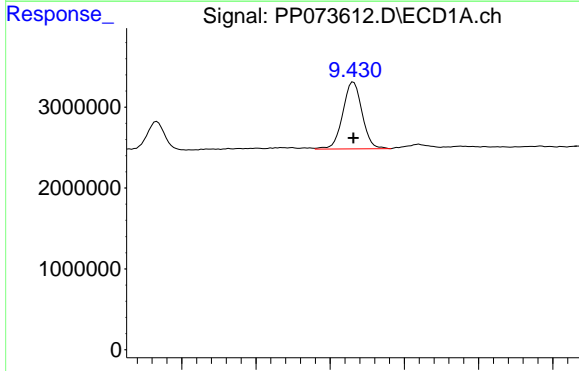
Time



#39 AR-1262-4

R.T.: 7.733 min  
Delta R.T.: -0.001 min  
Response: 63854209  
Conc: 346.94 ng/ml

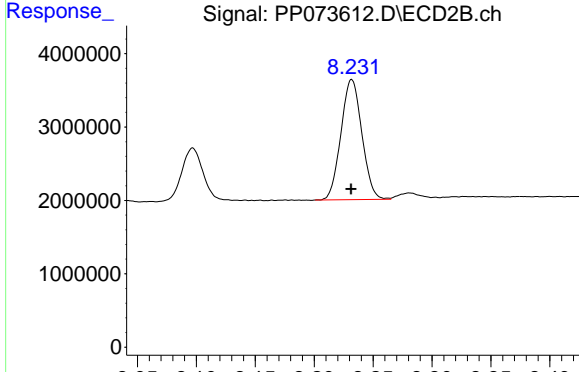
Time



#40 AR-1262-5

R.T.: 9.431 min  
Delta R.T.: 0.000 min  
Response: 14989534  
Conc: 236.47 ng/ml

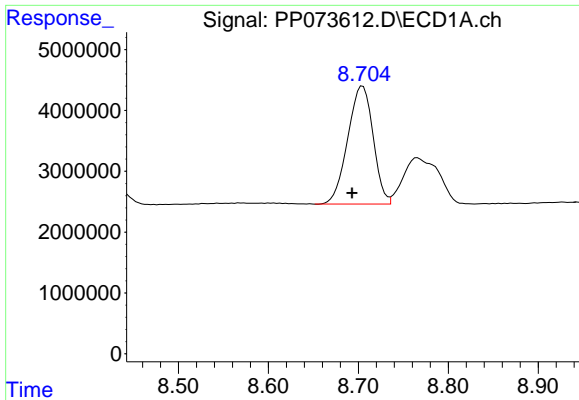
Time



#40 AR-1262-5

R.T.: 8.232 min  
Delta R.T.: 0.000 min  
Response: 20238839  
Conc: 239.70 ng/ml

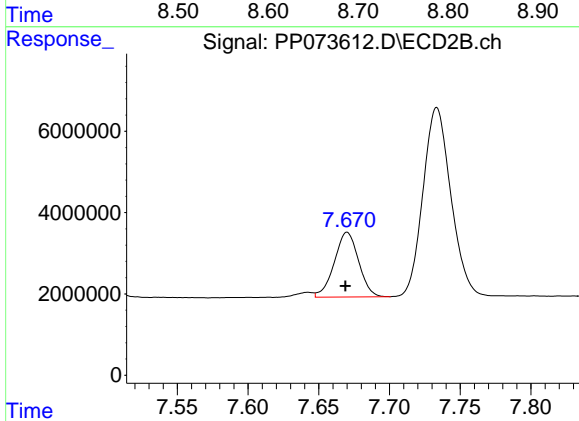
Time



#41 AR-1268-1

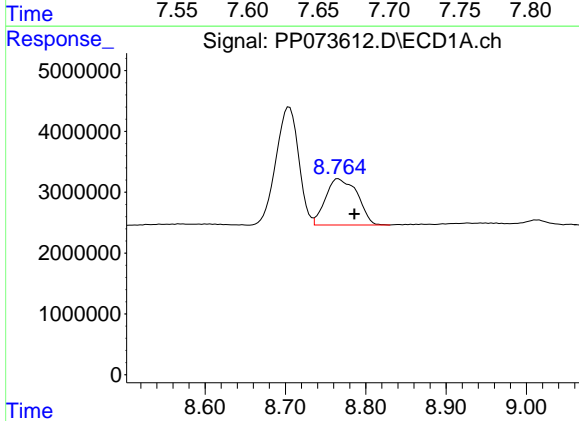
R.T.: 8.705 min  
 Delta R.T.: 0.012 min  
 Response: 38044251  
 Conc: 170.43 ng/ml

Instrument :  
 ECD\_P  
 ClientSampleId :  
 PB168754BS



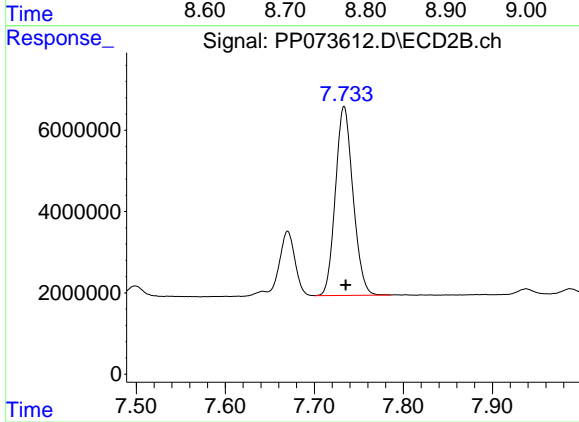
#41 AR-1268-1

R.T.: 7.670 min  
 Delta R.T.: 0.001 min  
 Response: 19121857  
 Conc: 62.21 ng/ml



#42 AR-1268-2

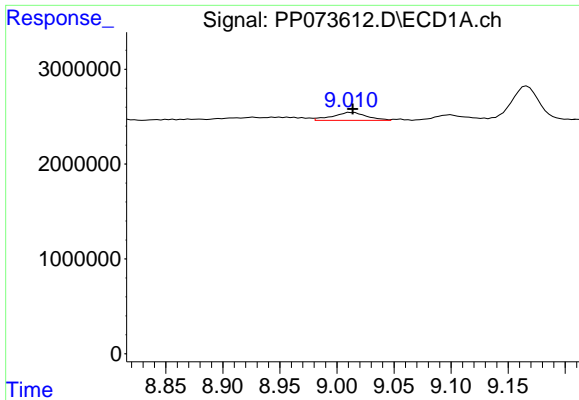
R.T.: 8.766 min  
 Delta R.T.: -0.020 min  
 Response: 20973831  
 Conc: 110.10 ng/ml



#42 AR-1268-2

R.T.: 7.733 min  
 Delta R.T.: -0.002 min  
 Response: 63854209  
 Conc: 240.34 ng/ml

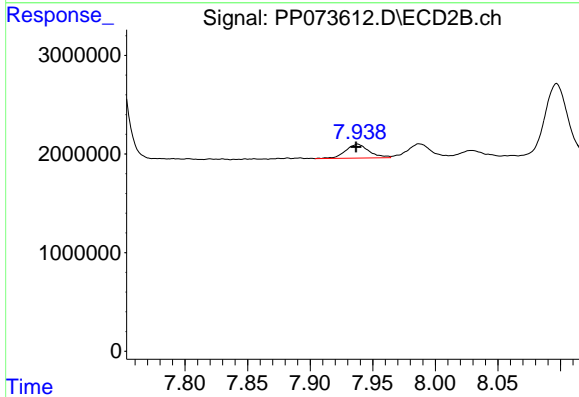




#43 AR-1268-3

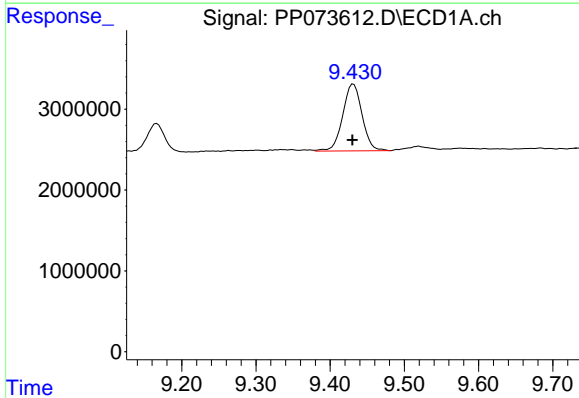
R.T.: 9.012 min  
 Delta R.T.: -0.002 min  
 Response: 1721185  
 Conc: 10.40 ng/ml

Instrument :  
 ECD\_P  
 ClientSampleId :  
 PB168754BS



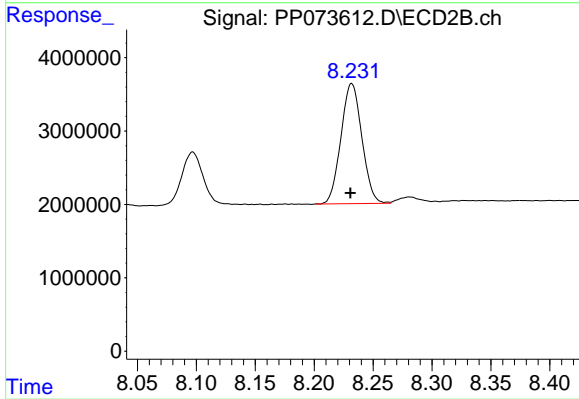
#43 AR-1268-3

R.T.: 7.938 min  
 Delta R.T.: 0.001 min  
 Response: 1837223  
 Conc: 8.14 ng/ml



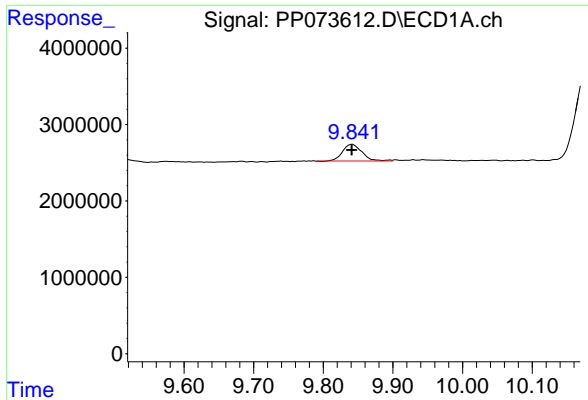
#44 AR-1268-4

R.T.: 9.431 min  
 Delta R.T.: 0.001 min  
 Response: 1498953  
 Conc: 215.54 ng/ml



#44 AR-1268-4

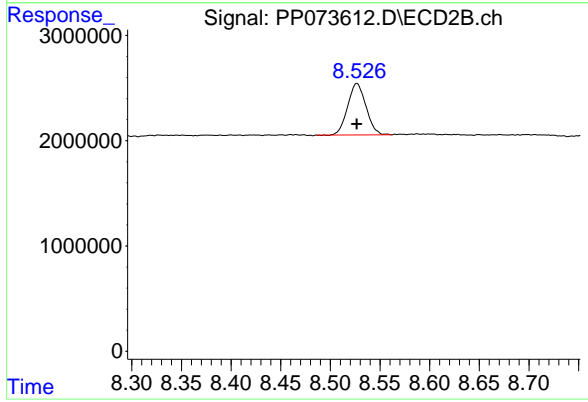
R.T.: 8.232 min  
 Delta R.T.: 0.001 min  
 Response: 2023883  
 Conc: 217.70 ng/ml



#45 AR-1268-5

R.T.: 9.842 min  
Delta R.T.: 0.001 min  
Response: 4256718  
Conc: 9.23 ng/ml

Instrument :  
ECD\_P  
ClientSampleId :  
PB168754BS



#45 AR-1268-5

R.T.: 8.527 min  
Delta R.T.: 0.000 min  
Response: 6294791  
Conc: 10.21 ng/ml