

Data Path : Z:\pestpcbsrv\HPCHEM1\ECD_P\Data\PP070925\
 Data File : PP073613.D
 Signal(s) : Signal #1: ECD1A.ch Signal #2: ECD2B.ch
 Acq On : 08 Jul 2025 16:34
 Operator : YP\AJ
 Sample : PB168754BSD
 Misc :
 ALS Vial : 20 Sample Multiplier: 1

Instrument :
 ECD_P
 ClientSampleId :
 PB168754BSD

Integration File signal 1: autoint1.e
 Integration File signal 2: autoint2.e
 Quant Time: Jul 09 01:42:15 2025
 Quant Method : Z:\pestpcbsrv\HPCHEM1\ECD_P\methods\PP070825.M
 Quant Title : GC EXTRACTABLES
 QLast Update : Tue Jul 08 08:35:32 2025
 Response via : Initial Calibration
 Integrator: ChemStation

Volume Inj. : 2 µl
 Signal #1 Phase : ZB-MR1 Signal #2 Phase: ZB-MR2
 Signal #1 Info : 30Mx0.32mmx 0.50µ Signal #2 Info : 30M x 0.32mm x 0.25µm

Compound	RT#1	RT#2	Resp#1	Resp#2	ng/ml	ng/ml

System Monitoring Compounds						
1) SA Tetrachlo...	4.490	3.781	28045202	35795667	20.478	19.430
2) SA Decachlor...	10.179	8.782	22487420	29815932	20.611	22.534
Target Compounds						
3) L1 AR-1016-1	5.640	4.859	21915885	32872620	461.255	482.182
4) L1 AR-1016-2	5.662	4.876	33373398	48439038	468.630	475.431
5) L1 AR-1016-3	5.724	5.053	20276933	26043939	464.395	481.347
6) L1 AR-1016-4	5.822	5.095	16693561	20455455	464.412	466.159
7) L1 AR-1016-5	6.114	5.308	14708632	25916612	469.468	474.815
8) L2 AR-1221-1	4.687	3.988	2168502	3642243	121.373	134.674
9) L2 AR-1221-2	4.777	4.076	2943621	4508933	217.974	221.457
10) L2 AR-1221-3	4.852	4.151	12234779	17809638	294.071	289.830
11) L3 AR-1232-1	4.852	4.151	12234779	17809638	374.717	382.063
12) L3 AR-1232-2	5.376	4.876	16272090	48439038	1001.071	1016.350
13) L3 AR-1232-3	5.662	5.053	33373398	26043939	1011.516	1040.549
14) L3 AR-1232-4	5.822	5.137	16693561	24739917	1015.105	1142.389
15) L3 AR-1232-5	5.911	5.308	12678167	25916612	1199.408	1148.610
16) L4 AR-1242-1	5.640	4.859	21915885	32872620	573.891	569.077
17) L4 AR-1242-2	5.662	4.876	33373398	48439038	557.319	560.286
18) L4 AR-1242-3	5.724	5.053	20276933	26043939	553.698	566.830
19) L4 AR-1242-4	5.822	5.137	16693561	24739917	519.466	558.926
20) L4 AR-1242-5	6.551	5.659	2540967	20795398	77.618	376.439 #
21) L5 AR-1248-1	5.640	4.859	21915885	32872620	709.929	732.213
22) L5 AR-1248-2	5.911	5.095	12678167	20455455	317.563	332.412
23) L5 AR-1248-3	6.114	5.137	14708632	24739917	331.204	386.172
24) L5 AR-1248-4	6.488	5.308	14152926	25916612	256.950	343.825 #
25) L5 AR-1248-5	6.551	5.699	2540967	3346934	47.238	44.871
26) L6 AR-1254-1	6.488	5.659	14152926	20795398	264.099	179.224 #
27) L6 AR-1254-2	6.703	5.807	12978188	20202554	155.821	200.774 #
28) L6 AR-1254-3	7.067	6.222	7102327	35478245	80.405	229.712 #
29) L6 AR-1254-4	7.350	6.436	4997482	3797346	63.527	40.158 #
30) L6 AR-1254-5	7.764	6.852	45832064	64665165	622.044	484.583
31) L7 AR-1260-1	7.231	6.338	28548423	47686479	484.190	488.790
32) L7 AR-1260-2	7.485	6.527	41209705	58789418	429.985	478.595
33) L7 AR-1260-3	7.842	6.678	28919885	52665426	395.780	481.122
34) L7 AR-1260-4	8.066	7.148	28634999	39202597	438.515	438.466
35) L7 AR-1260-5	8.384	7.390	64197548	98202517	425.564	436.967
36) L8 AR-1262-1	8.066	6.889	28634999	43889793	329.035	297.172
37) L8 AR-1262-2	8.384	7.148	64197548	39202597	324.185	306.680
38) L8 AR-1262-3	8.706	7.669	38963578	20956387	309.911	183.797 #
39) L8 AR-1262-4	8.767	7.734	21623842	65209382	231.859	354.304 #
40) L8 AR-1262-5	9.433	8.232	14693154	20450253	231.792	242.199
41) L9 AR-1268-1	8.706	7.669	38963578	20956387	174.549	68.178 #

Data Path : Z:\pestpcbsrv\HPCHEM1\ECD_P\Data\PP070925\
 Data File : PP073613.D
 Signal(s) : Signal #1: ECD1A.ch Signal #2: ECD2B.ch
 Acq On : 08 Jul 2025 16:34
 Operator : YP\AJ
 Sample : PB168754BSD
 Misc :
 ALS Vial : 20 Sample Multiplier: 1

Instrument :
 ECD_P
 ClientSampleId :
 PB168754BSD

Integration File signal 1: autoint1.e
 Integration File signal 2: autoint2.e
 Quant Time: Jul 09 01:42:15 2025
 Quant Method : Z:\pestpcbsrv\HPCHEM1\ECD_P\methods\PP070825.M
 Quant Title : GC EXTRACTABLES
 QLast Update : Tue Jul 08 08:35:32 2025
 Response via : Initial Calibration
 Integrator: ChemStation

Volume Inj. : 2 µl
 Signal #1 Phase : ZB-MR1 Signal #2 Phase: ZB-MR2
 Signal #1 Info : 30Mx0.32mmx 0.50µ Signal #2 Info : 30M x 0.32mm x 0.25µm

	Compound	RT#1	RT#2	Resp#1	Resp#2	ng/ml	ng/ml
42)	L9 AR-1268-2	8.767	7.734	21623842	65209382	113.508	245.436 #
43)	L9 AR-1268-3	9.014	7.938	1476388	2046740	8.917	9.073
44)	L9 AR-1268-4	9.433	8.232	14693154	20450253	211.279	219.971
45)	L9 AR-1268-5	9.843	8.527	4320225	6461777	9.372	10.481

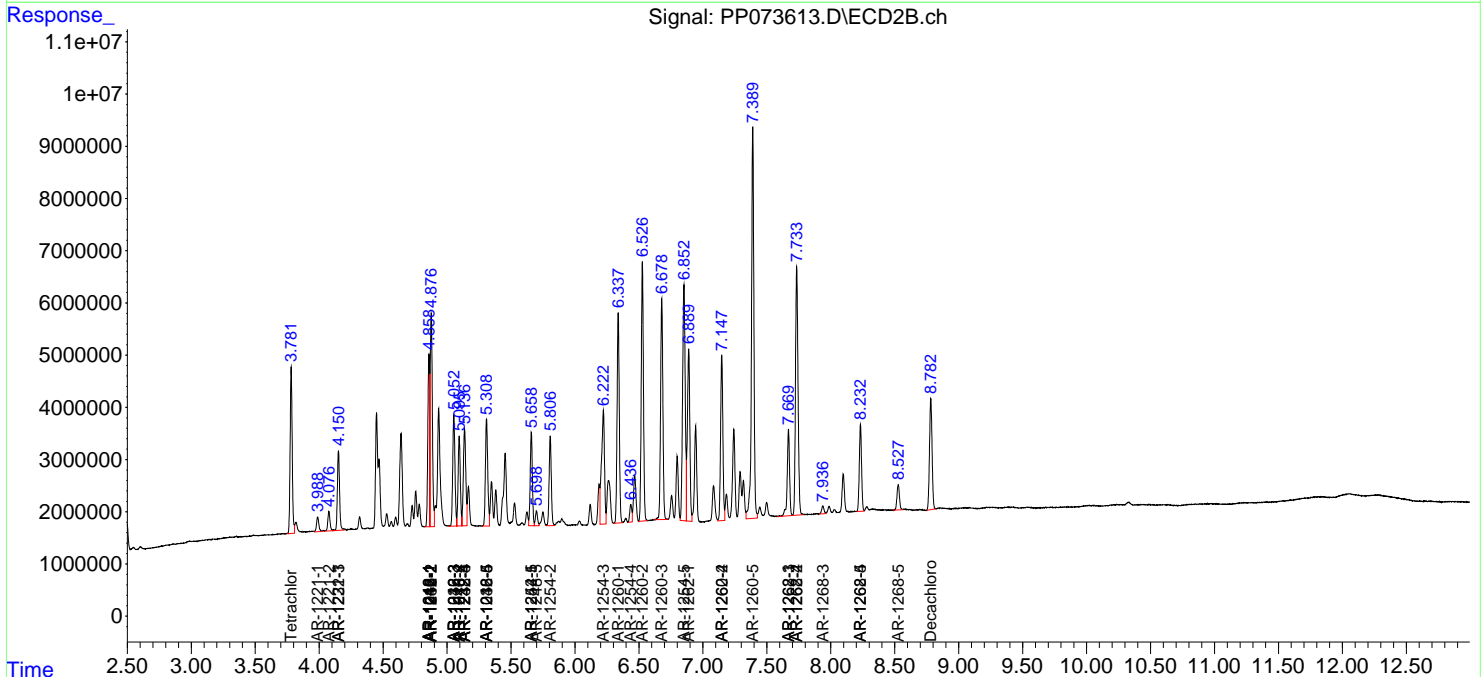
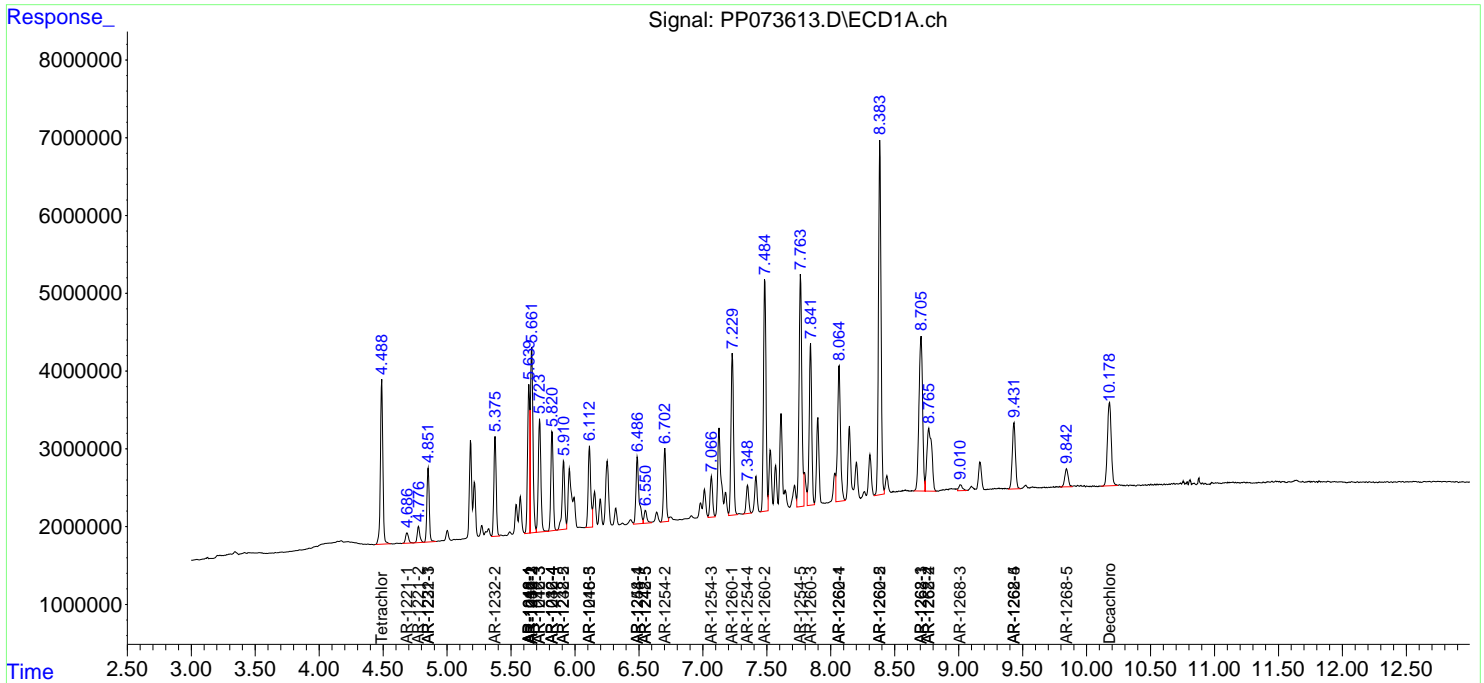
(f)=RT Delta > 1/2 Window (#)=Amounts differ by > 25% (m)=manual int.

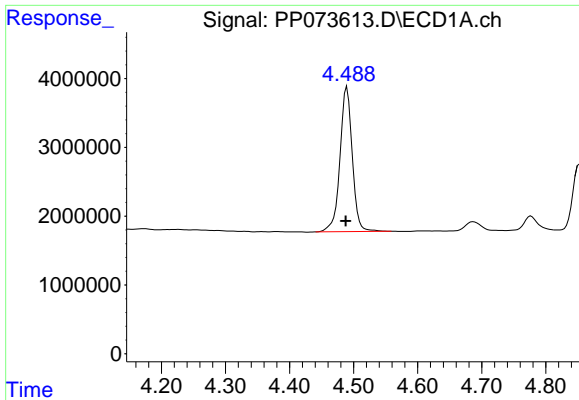
Data Path : Z:\pestpcbsrv\HPCHEM1\ECD_P\Data\PP070925\
 Data File : PP073613.D
 Signal(s) : Signal #1: ECD1A.ch Signal #2: ECD2B.ch
 Acq On : 08 Jul 2025 16:34
 Operator : YP\AJ
 Sample : PB168754BSD
 Misc :
 ALS Vial : 20 Sample Multiplier: 1

Instrument :
 ECD_P
 ClientSampleId :
 PB168754BSD

Integration File signal 1: autoint1.e
 Integration File signal 2: autoint2.e
 Quant Time: Jul 09 01:42:15 2025
 Quant Method : Z:\pestpcbsrv\HPCHEM1\ECD_P\methods\PP070825.M
 Quant Title : GC EXTRACTABLES
 QLast Update : Tue Jul 08 08:35:32 2025
 Response via : Initial Calibration
 Integrator: ChemStation

Volume Inj. : 2 µl
 Signal #1 Phase : ZB-MR1 Signal #2 Phase: ZB-MR2
 Signal #1 Info : 30Mx0.32mmx 0.50µ Signal #2 Info : 30M x 0.32mm x 0.25µm

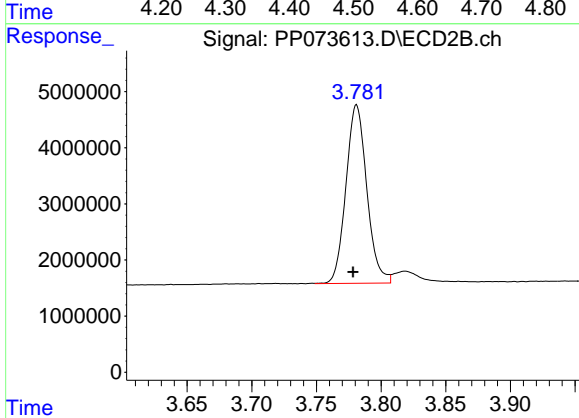




#1 Tetrachloro-m-xylene

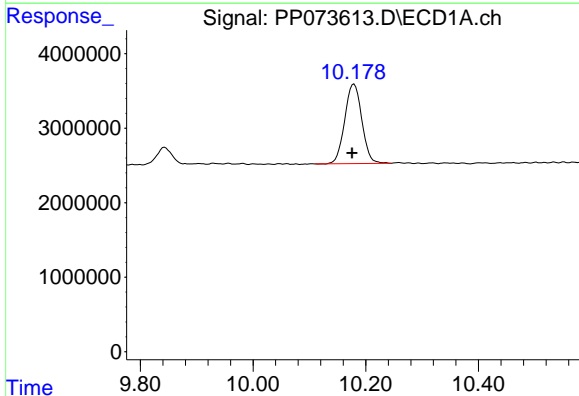
R.T.: 4.490 min
 Delta R.T.: 0.002 min
 Response: 28045202
 Conc: 20.48 ng/ml

Instrument :
 ECD_P
 ClientSampleId :
 PB168754BSD



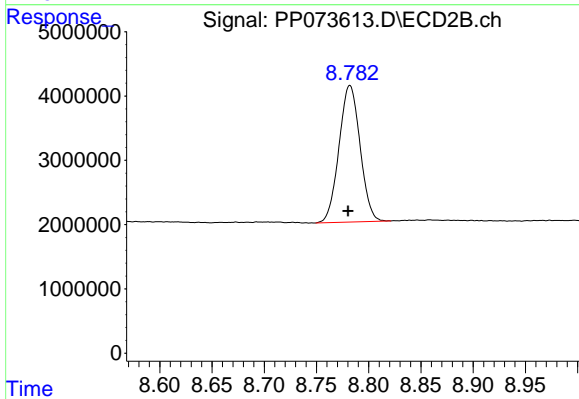
#1 Tetrachloro-m-xylene

R.T.: 3.781 min
 Delta R.T.: 0.003 min
 Response: 35795667
 Conc: 19.43 ng/ml



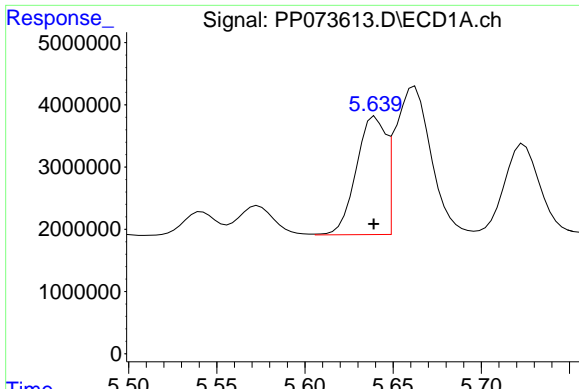
#2 Decachlorobiphenyl

R.T.: 10.179 min
 Delta R.T.: 0.003 min
 Response: 22487420
 Conc: 20.61 ng/ml



#2 Decachlorobiphenyl

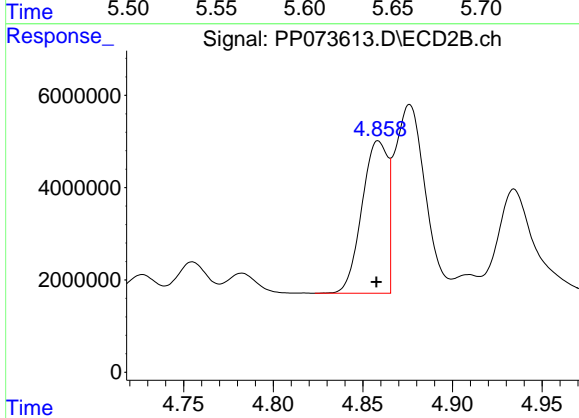
R.T.: 8.782 min
 Delta R.T.: 0.002 min
 Response: 29815932
 Conc: 22.53 ng/ml



#3 AR-1016-1

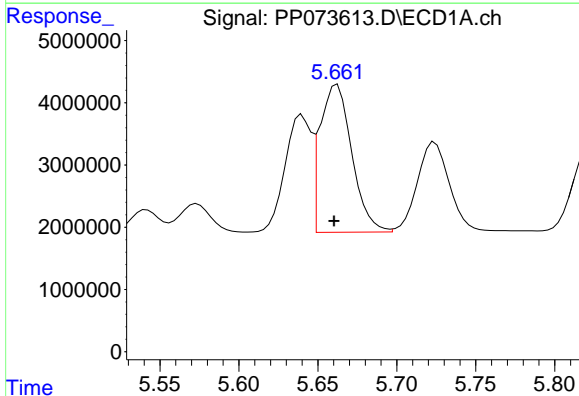
R.T.: 5.640 min
 Delta R.T.: 0.000 min
 Response: 21915885
 Conc: 461.26 ng/ml

Instrument :
 ECD_P
 ClientSampleId :
 PB168754BSD



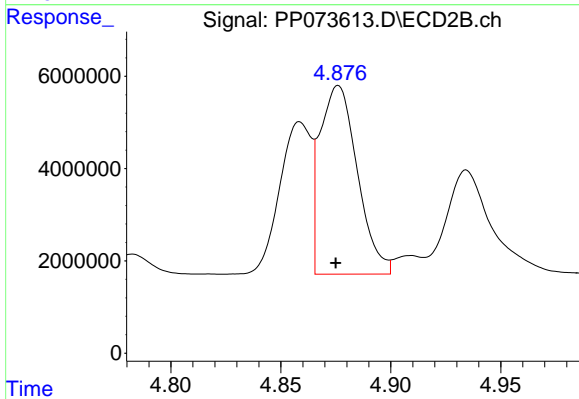
#3 AR-1016-1

R.T.: 4.859 min
 Delta R.T.: 0.001 min
 Response: 32872620
 Conc: 482.18 ng/ml



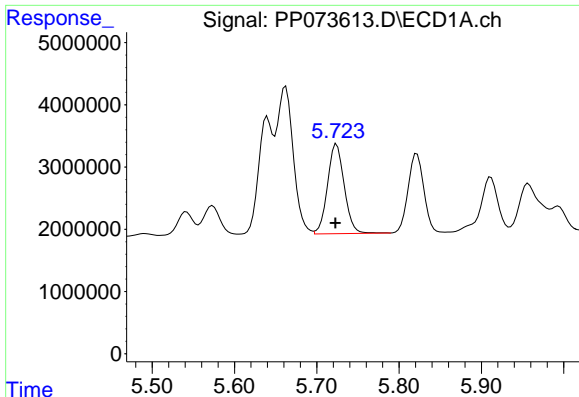
#4 AR-1016-2

R.T.: 5.662 min
 Delta R.T.: 0.002 min
 Response: 33373398
 Conc: 468.63 ng/ml



#4 AR-1016-2

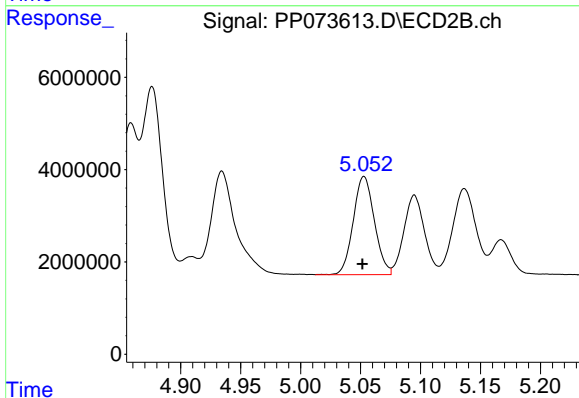
R.T.: 4.876 min
 Delta R.T.: 0.001 min
 Response: 48439038
 Conc: 475.43 ng/ml



#5 AR-1016-3

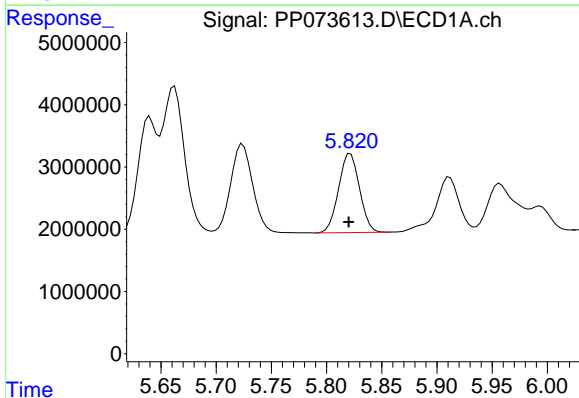
R.T.: 5.724 min
 Delta R.T.: 0.002 min
 Response: 20276933
 Conc: 464.40 ng/ml

Instrument :
 ECD_P
 ClientSampleId :
 PB168754BSD



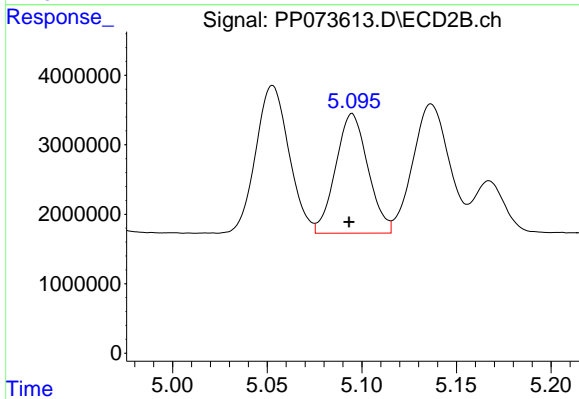
#5 AR-1016-3

R.T.: 5.053 min
 Delta R.T.: 0.001 min
 Response: 26043939
 Conc: 481.35 ng/ml



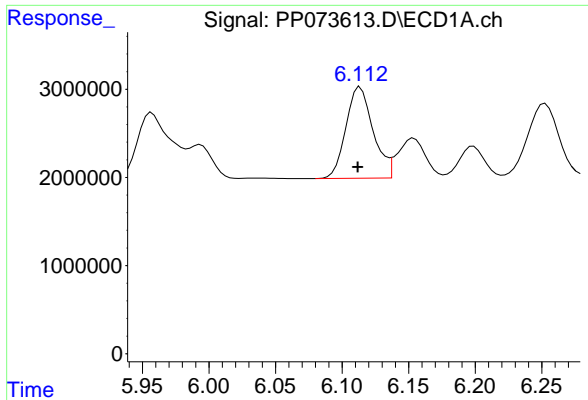
#6 AR-1016-4

R.T.: 5.822 min
 Delta R.T.: 0.002 min
 Response: 16693561
 Conc: 464.41 ng/ml



#6 AR-1016-4

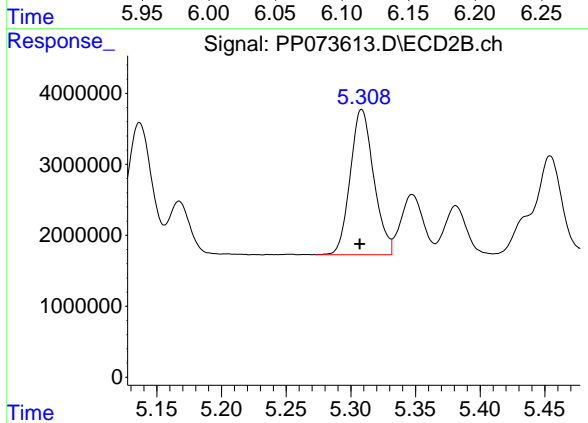
R.T.: 5.095 min
 Delta R.T.: 0.002 min
 Response: 20455455
 Conc: 466.16 ng/ml



#7 AR-1016-5

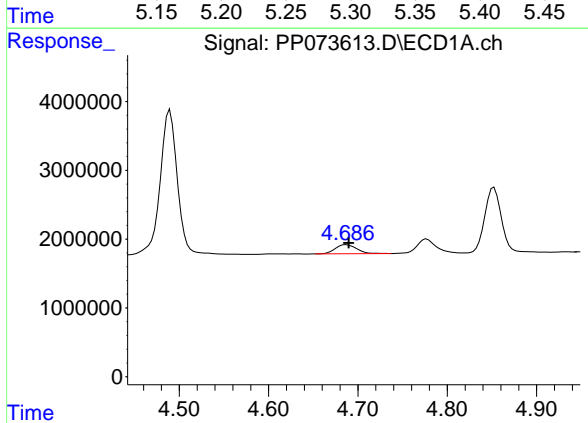
R.T.: 6.114 min
 Delta R.T.: 0.002 min
 Response: 14708632
 Conc: 469.47 ng/ml

Instrument :
 ECD_P
 ClientSampleId :
 PB168754BSD



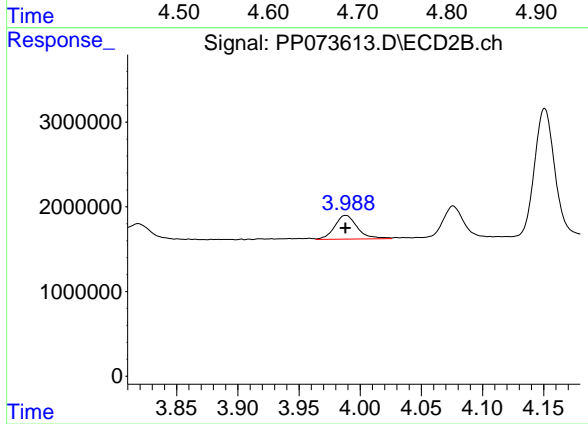
#7 AR-1016-5

R.T.: 5.308 min
 Delta R.T.: 0.001 min
 Response: 25916612
 Conc: 474.82 ng/ml



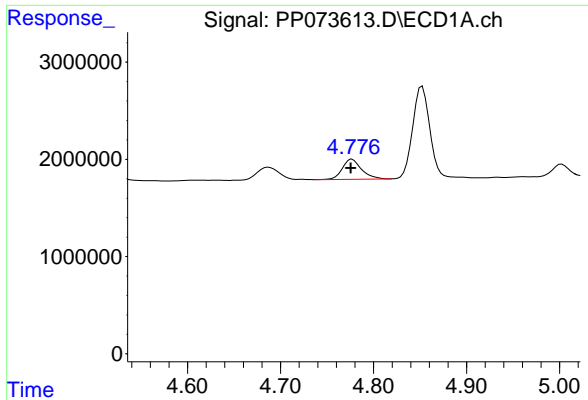
#8 AR-1221-1

R.T.: 4.687 min
 Delta R.T.: -0.002 min
 Response: 2168502
 Conc: 121.37 ng/ml



#8 AR-1221-1

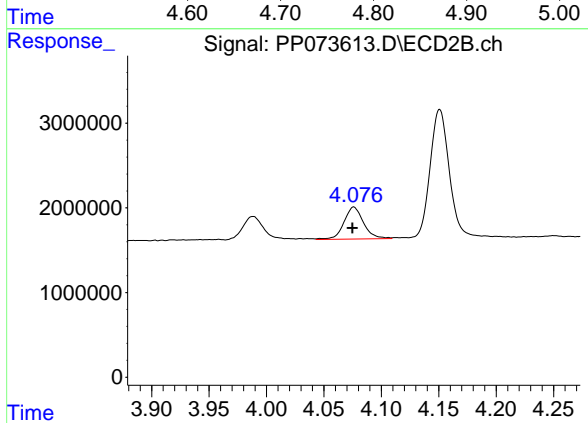
R.T.: 3.988 min
 Delta R.T.: 0.000 min
 Response: 3642243
 Conc: 134.67 ng/ml



#9 AR-1221-2

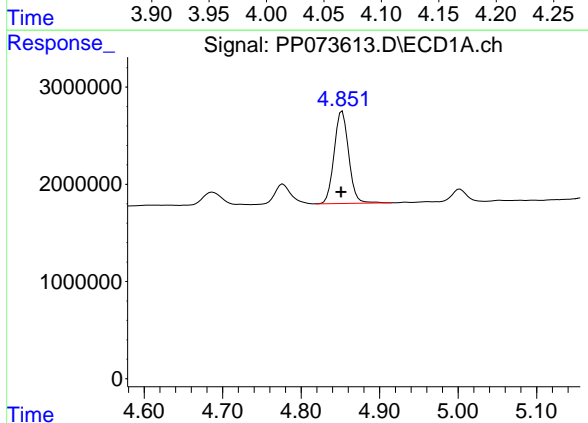
R.T.: 4.777 min
 Delta R.T.: 0.001 min
 Response: 2943621
 Conc: 217.97 ng/ml

Instrument :
 ECD_P
 ClientSampleId :
 PB168754BSD



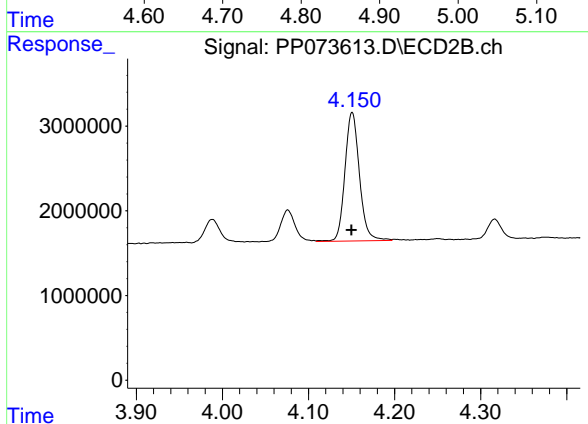
#9 AR-1221-2

R.T.: 4.076 min
 Delta R.T.: 0.001 min
 Response: 4508933
 Conc: 221.46 ng/ml



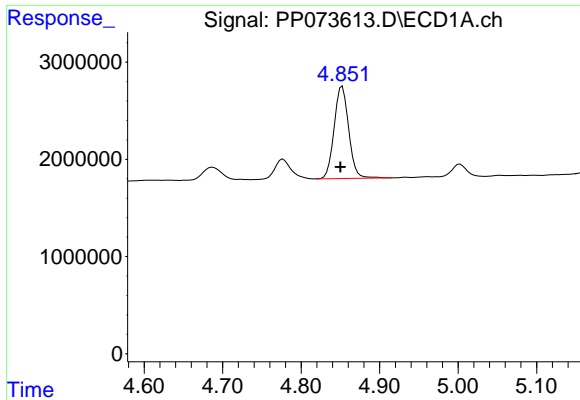
#10 AR-1221-3

R.T.: 4.852 min
 Delta R.T.: 0.001 min
 Response: 12234779
 Conc: 294.07 ng/ml



#10 AR-1221-3

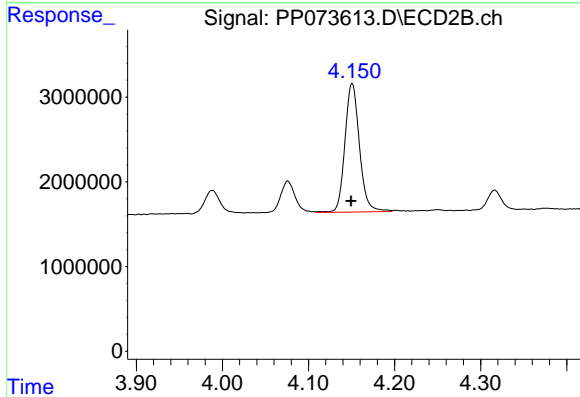
R.T.: 4.151 min
 Delta R.T.: 0.000 min
 Response: 17809638
 Conc: 289.83 ng/ml



#11 AR-1232-1

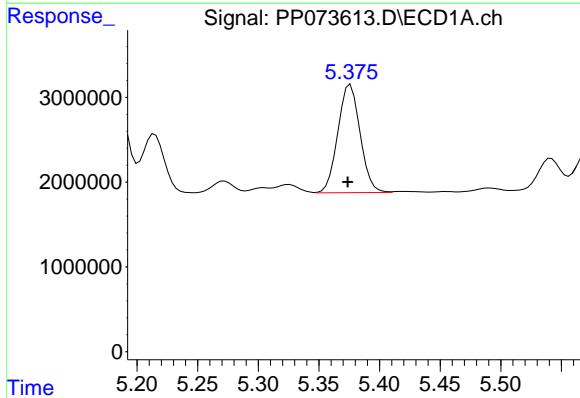
R.T.: 4.852 min
 Delta R.T.: 0.002 min
 Response: 12234779
 Conc: 374.72 ng/ml

Instrument :
 ECD_P
 ClientSampleId :
 PB168754BSD



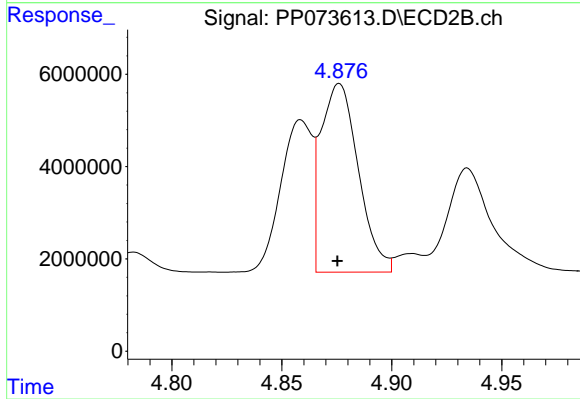
#11 AR-1232-1

R.T.: 4.151 min
 Delta R.T.: 0.001 min
 Response: 17809638
 Conc: 382.06 ng/ml



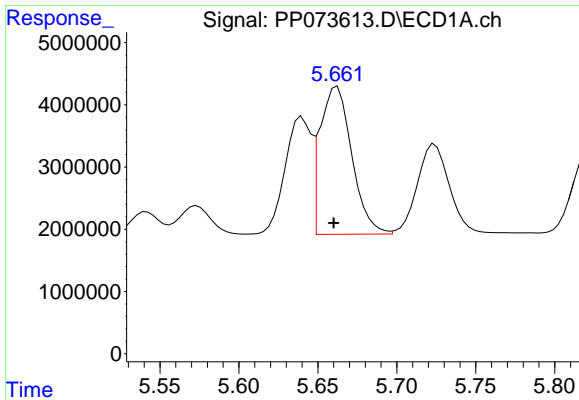
#12 AR-1232-2

R.T.: 5.376 min
 Delta R.T.: 0.002 min
 Response: 16272090
 Conc: 1001.07 ng/ml



#12 AR-1232-2

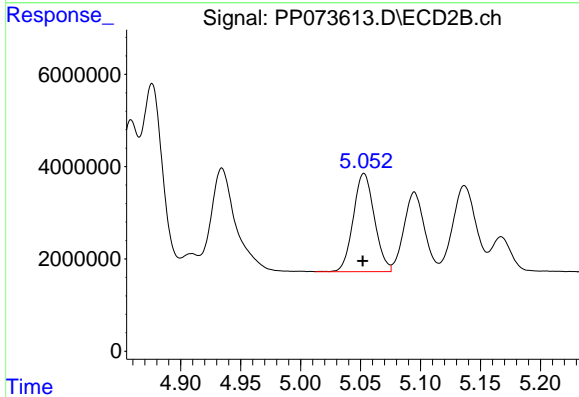
R.T.: 4.876 min
 Delta R.T.: 0.000 min
 Response: 48439038
 Conc: 1016.35 ng/ml



#13 AR-1232-3

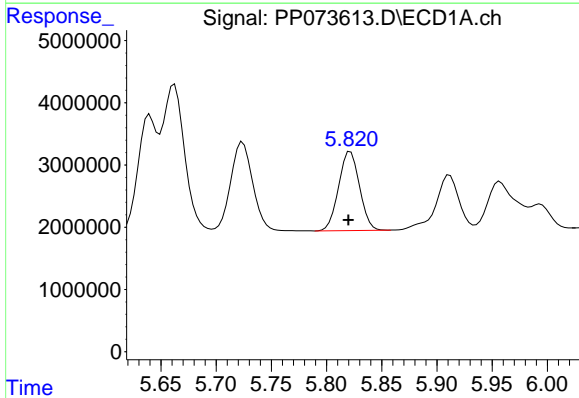
R.T.: 5.662 min
 Delta R.T.: 0.002 min
 Response: 33373398
 Conc: 1011.52 ng/ml

Instrument :
 ECD_P
 ClientSampleId :
 PB168754BSD



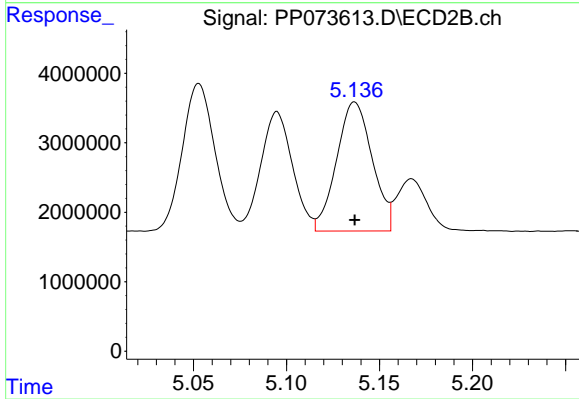
#13 AR-1232-3

R.T.: 5.053 min
 Delta R.T.: 0.000 min
 Response: 26043939
 Conc: 1040.55 ng/ml



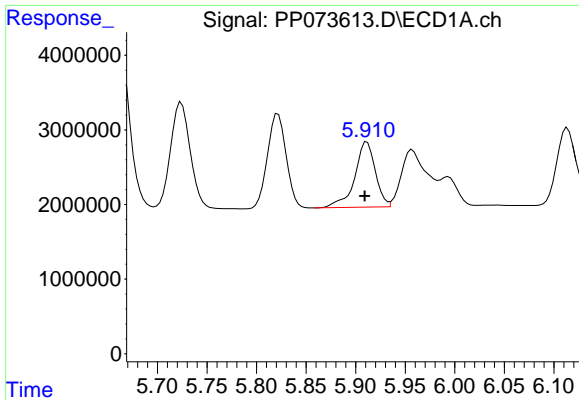
#14 AR-1232-4

R.T.: 5.822 min
 Delta R.T.: 0.002 min
 Response: 16693561
 Conc: 1015.10 ng/ml



#14 AR-1232-4

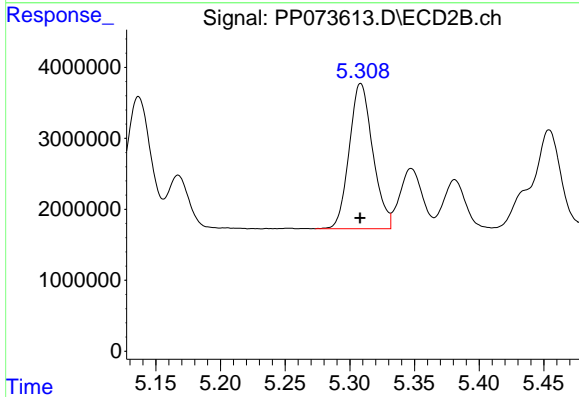
R.T.: 5.137 min
 Delta R.T.: 0.000 min
 Response: 24739917
 Conc: 1142.39 ng/ml



#15 AR-1232-5

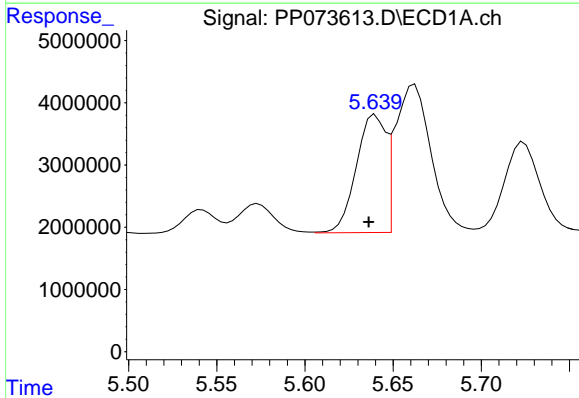
R.T.: 5.911 min
 Delta R.T.: 0.002 min
 Response: 12678167
 Conc: 1199.41 ng/ml

Instrument :
 ECD_P
 ClientSampleId :
 PB168754BSD



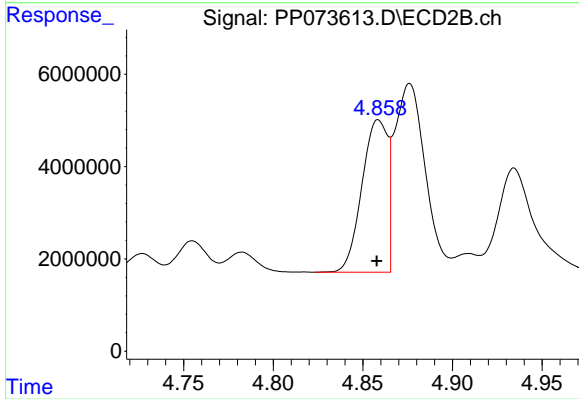
#15 AR-1232-5

R.T.: 5.308 min
 Delta R.T.: 0.000 min
 Response: 25916612
 Conc: 1148.61 ng/ml



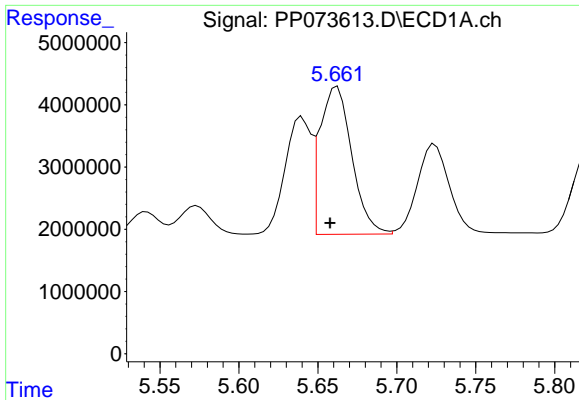
#16 AR-1242-1

R.T.: 5.640 min
 Delta R.T.: 0.004 min
 Response: 21915885
 Conc: 573.89 ng/ml



#16 AR-1242-1

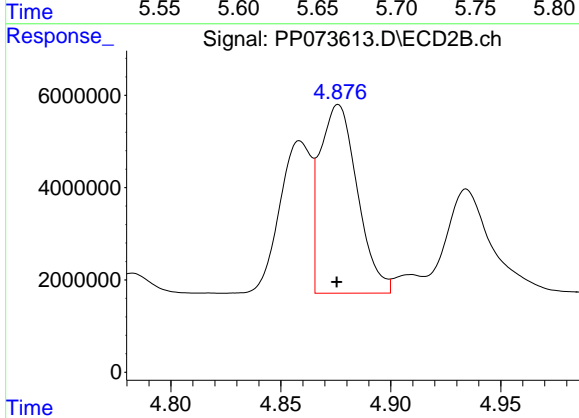
R.T.: 4.859 min
 Delta R.T.: 0.000 min
 Response: 32872620
 Conc: 569.08 ng/ml



#17 AR-1242-2

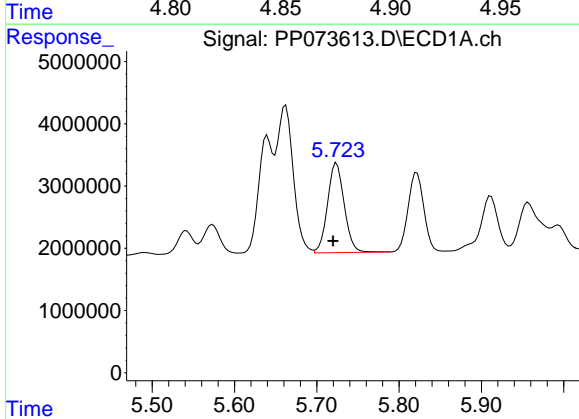
R.T.: 5.662 min
 Delta R.T.: 0.004 min
 Response: 33373398
 Conc: 557.32 ng/ml

Instrument :
 ECD_P
 ClientSampleId :
 PB168754BSD



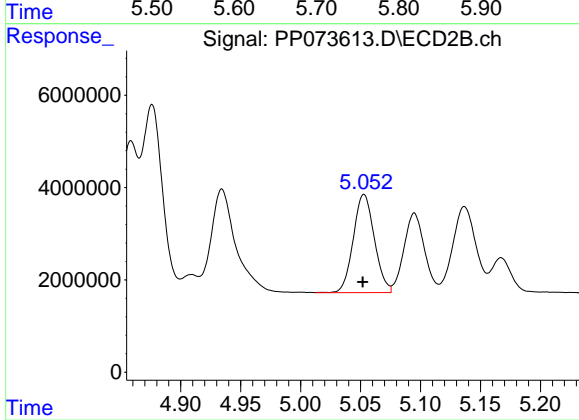
#17 AR-1242-2

R.T.: 4.876 min
 Delta R.T.: 0.000 min
 Response: 48439038
 Conc: 560.29 ng/ml



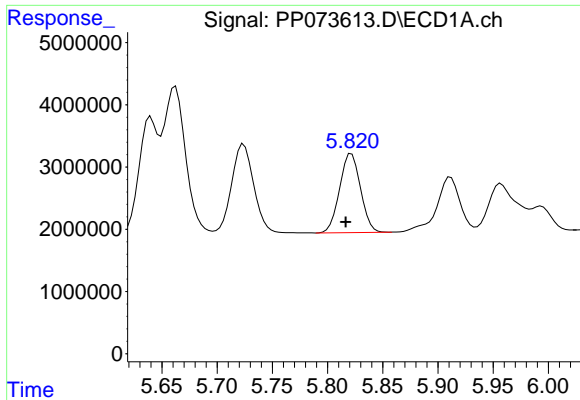
#18 AR-1242-3

R.T.: 5.724 min
 Delta R.T.: 0.004 min
 Response: 20276933
 Conc: 553.70 ng/ml



#18 AR-1242-3

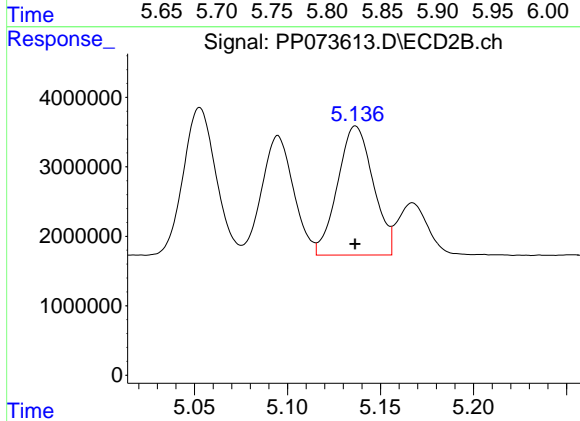
R.T.: 5.053 min
 Delta R.T.: 0.000 min
 Response: 26043939
 Conc: 566.83 ng/ml



#19 AR-1242-4

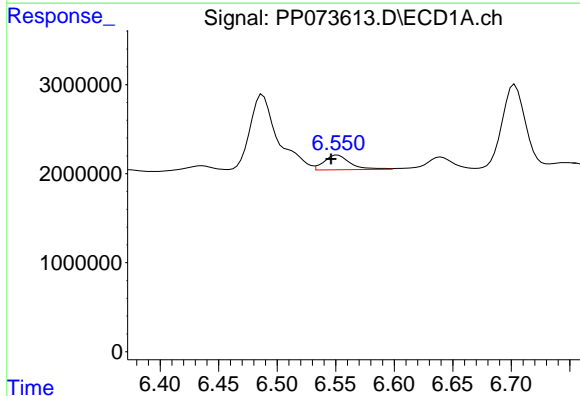
R.T.: 5.822 min
 Delta R.T.: 0.005 min
 Response: 16693561
 Conc: 519.47 ng/ml

Instrument :
 ECD_P
 ClientSampleId :
 PB168754BSD



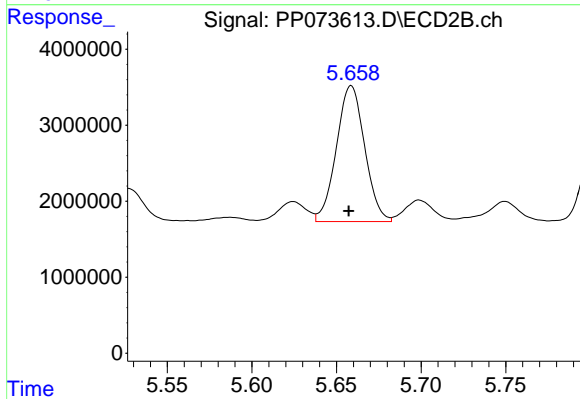
#19 AR-1242-4

R.T.: 5.137 min
 Delta R.T.: 0.000 min
 Response: 24739917
 Conc: 558.93 ng/ml



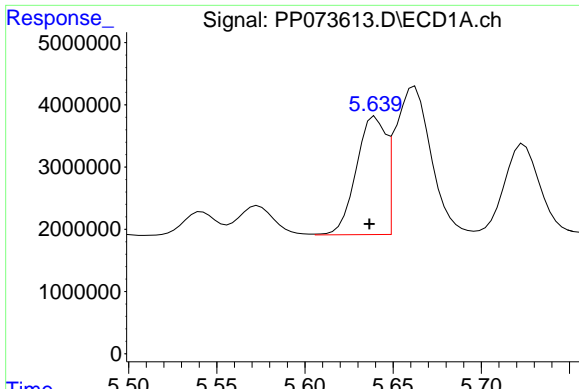
#20 AR-1242-5

R.T.: 6.551 min
 Delta R.T.: 0.005 min
 Response: 2540967
 Conc: 77.62 ng/ml



#20 AR-1242-5

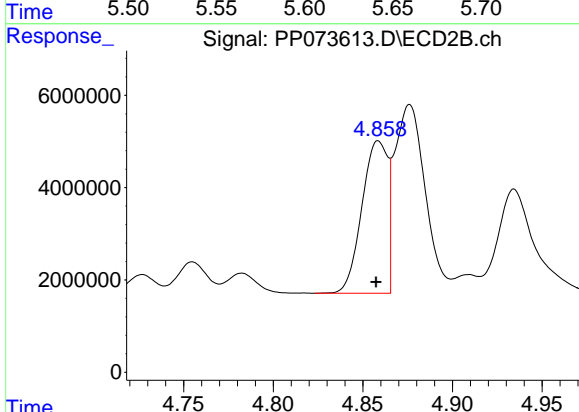
R.T.: 5.659 min
 Delta R.T.: 0.002 min
 Response: 20795398
 Conc: 376.44 ng/ml



#21 AR-1248-1

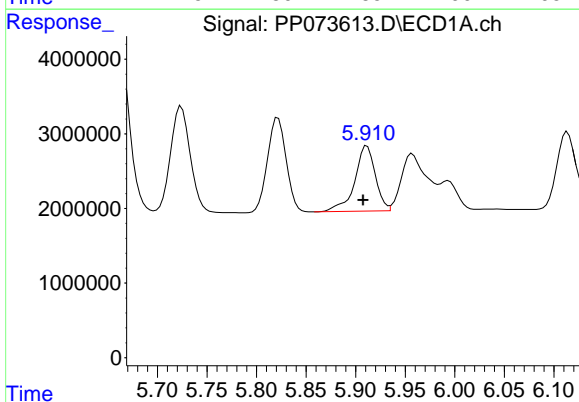
R.T.: 5.640 min
 Delta R.T.: 0.003 min
 Response: 21915885
 Conc: 709.93 ng/ml

Instrument :
 ECD_P
 ClientSampleId :
 PB168754BSD



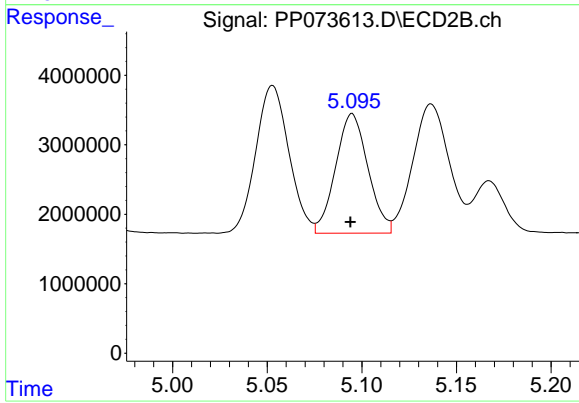
#21 AR-1248-1

R.T.: 4.859 min
 Delta R.T.: 0.001 min
 Response: 32872620
 Conc: 732.21 ng/ml



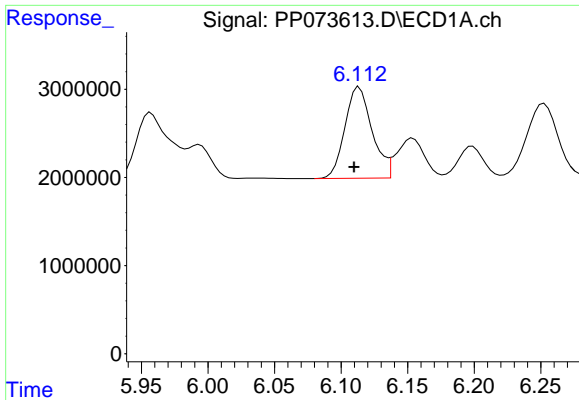
#22 AR-1248-2

R.T.: 5.911 min
 Delta R.T.: 0.004 min
 Response: 12678167
 Conc: 317.56 ng/ml



#22 AR-1248-2

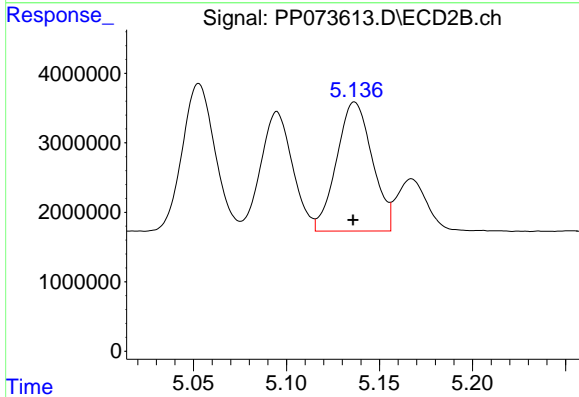
R.T.: 5.095 min
 Delta R.T.: 0.000 min
 Response: 20455455
 Conc: 332.41 ng/ml



#23 AR-1248-3

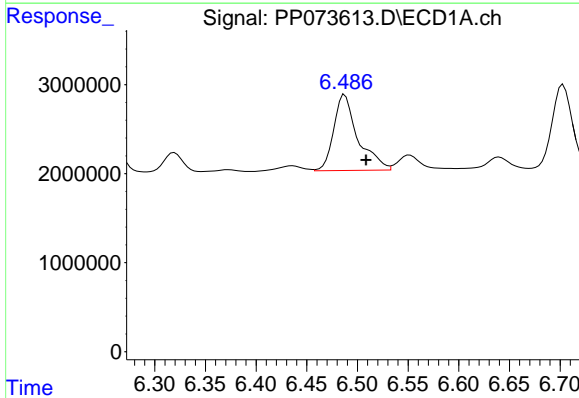
R.T.: 6.114 min
 Delta R.T.: 0.004 min
 Response: 14708632
 Conc: 331.20 ng/ml

Instrument :
 ECD_P
 ClientSampleId :
 PB168754BSD



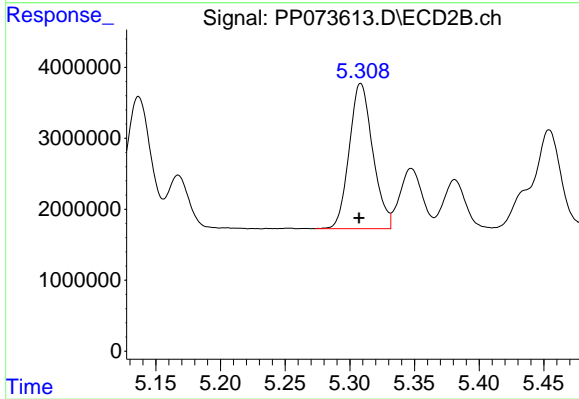
#23 AR-1248-3

R.T.: 5.137 min
 Delta R.T.: 0.000 min
 Response: 24739917
 Conc: 386.17 ng/ml



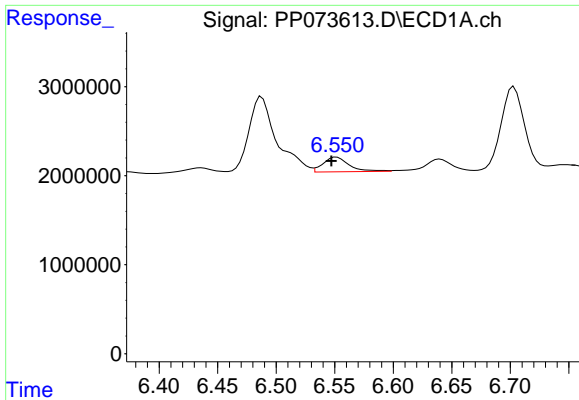
#24 AR-1248-4

R.T.: 6.488 min
 Delta R.T.: -0.021 min
 Response: 14152926
 Conc: 256.95 ng/ml



#24 AR-1248-4

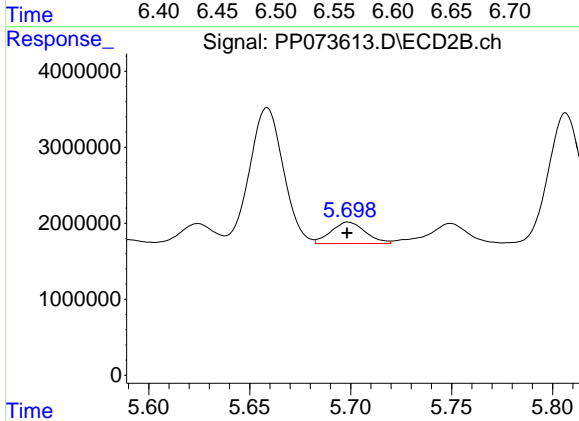
R.T.: 5.308 min
 Delta R.T.: 0.001 min
 Response: 25916612
 Conc: 343.82 ng/ml



#25 AR-1248-5

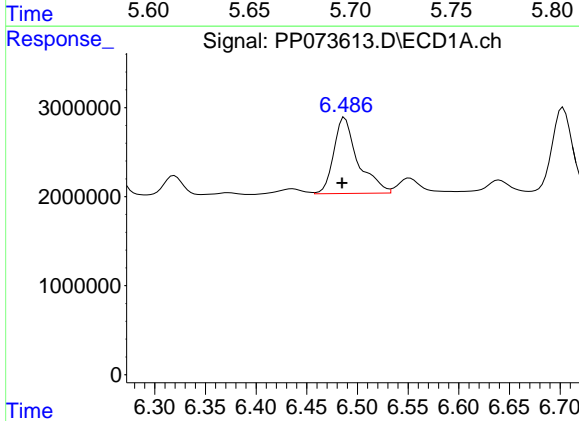
R.T.: 6.551 min
 Delta R.T.: 0.004 min
 Response: 2540967
 Conc: 47.24 ng/ml

Instrument :
 ECD_P
 ClientSampleId :
 PB168754BSD



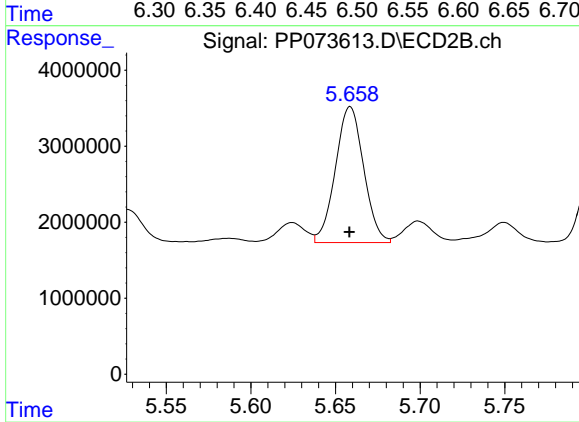
#25 AR-1248-5

R.T.: 5.699 min
 Delta R.T.: 0.000 min
 Response: 3346934
 Conc: 44.87 ng/ml



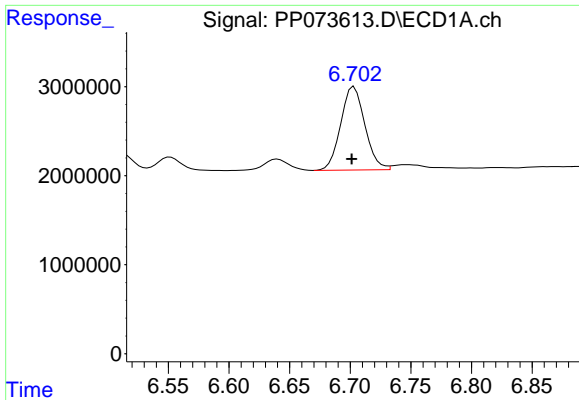
#26 AR-1254-1

R.T.: 6.488 min
 Delta R.T.: 0.003 min
 Response: 14152926
 Conc: 264.10 ng/ml



#26 AR-1254-1

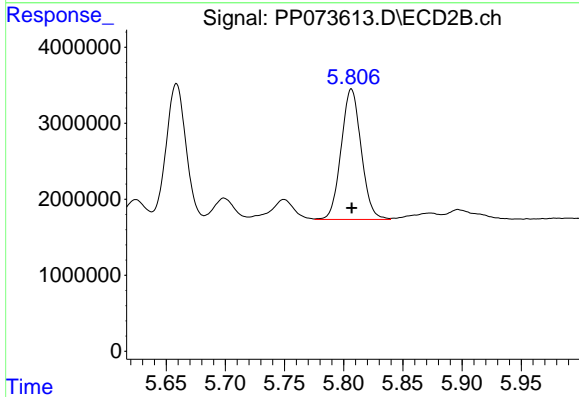
R.T.: 5.659 min
 Delta R.T.: 0.000 min
 Response: 20795398
 Conc: 179.22 ng/ml



#27 AR-1254-2

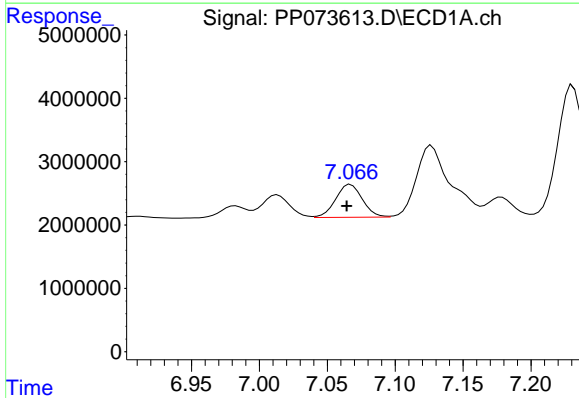
R.T.: 6.703 min
 Delta R.T.: 0.002 min
 Response: 12978188
 Conc: 155.82 ng/ml

Instrument :
 ECD_P
 ClientSampleId :
 PB168754BSD



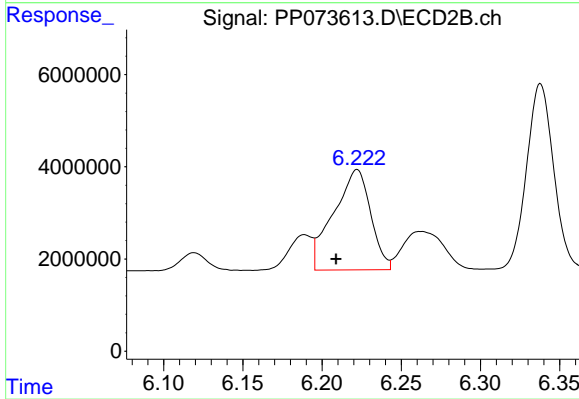
#27 AR-1254-2

R.T.: 5.807 min
 Delta R.T.: 0.000 min
 Response: 20202554
 Conc: 200.77 ng/ml



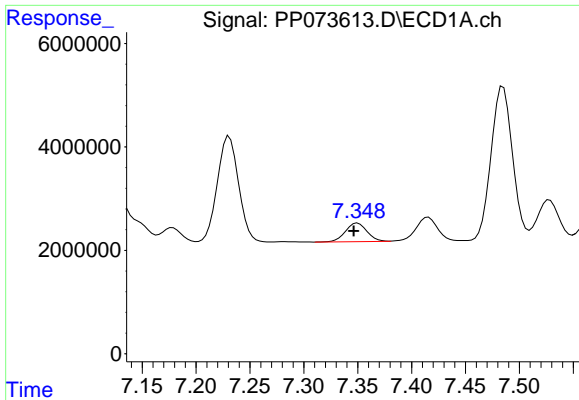
#28 AR-1254-3

R.T.: 7.067 min
 Delta R.T.: 0.003 min
 Response: 7102327
 Conc: 80.41 ng/ml



#28 AR-1254-3

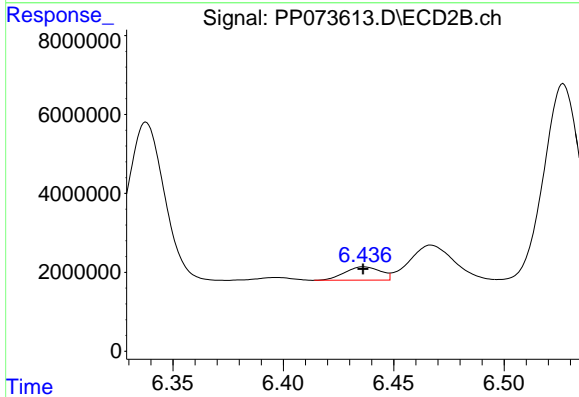
R.T.: 6.222 min
 Delta R.T.: 0.013 min
 Response: 35478245
 Conc: 229.71 ng/ml



#29 AR-1254-4

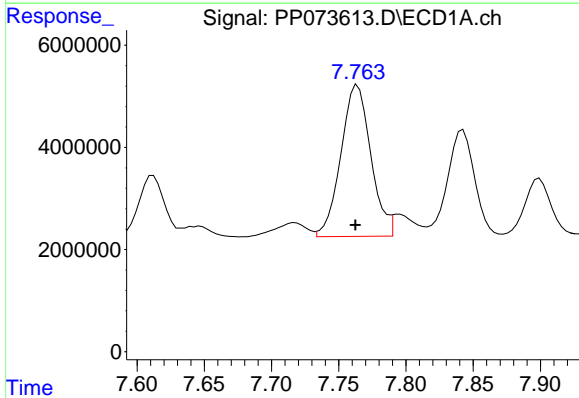
R.T.: 7.350 min
 Delta R.T.: 0.004 min
 Response: 4997482
 Conc: 63.53 ng/ml

Instrument :
 ECD_P
 ClientSampleId :
 PB168754BSD



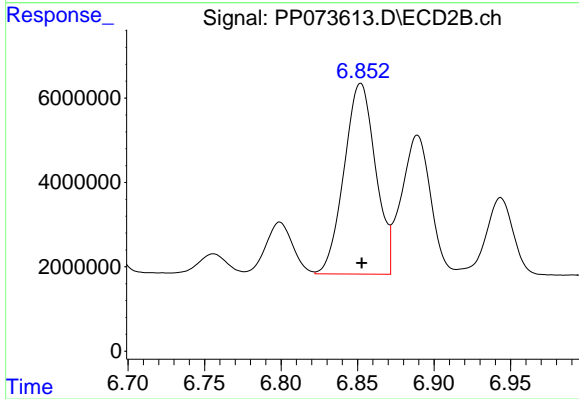
#29 AR-1254-4

R.T.: 6.436 min
 Delta R.T.: 0.000 min
 Response: 3797346
 Conc: 40.16 ng/ml



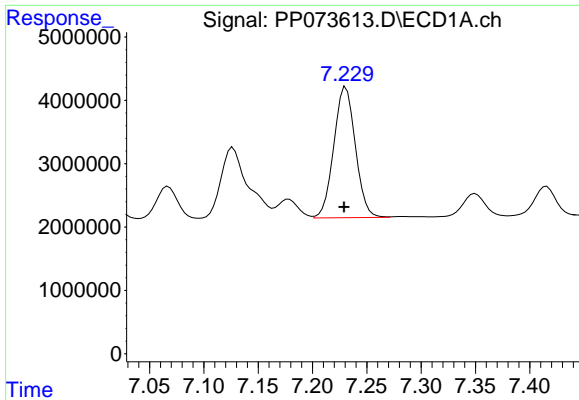
#30 AR-1254-5

R.T.: 7.764 min
 Delta R.T.: 0.002 min
 Response: 45832064
 Conc: 622.04 ng/ml



#30 AR-1254-5

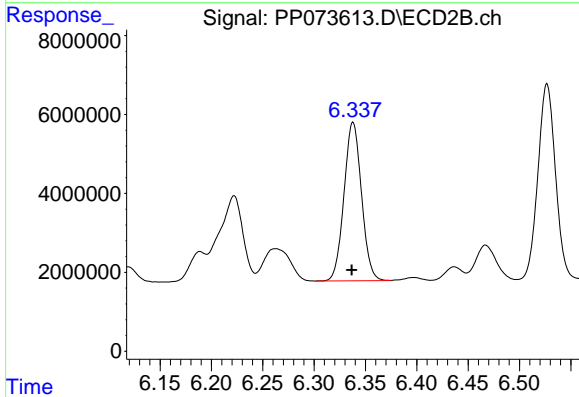
R.T.: 6.852 min
 Delta R.T.: 0.000 min
 Response: 64665165
 Conc: 484.58 ng/ml



#31 AR-1260-1

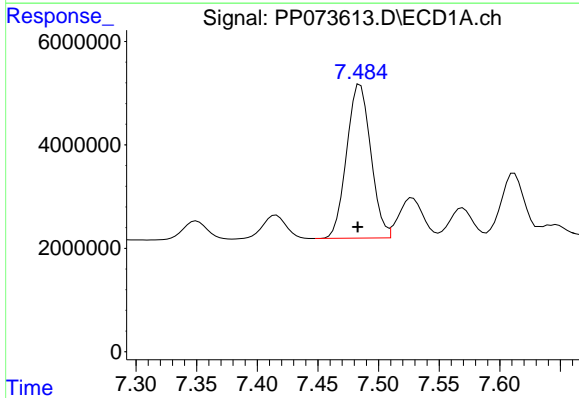
R.T.: 7.231 min
 Delta R.T.: 0.002 min
 Response: 28548423
 Conc: 484.19 ng/ml

Instrument :
 ECD_P
 ClientSampleId :
 PB168754BSD



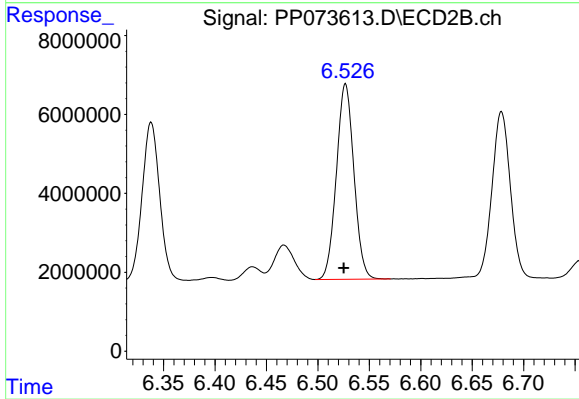
#31 AR-1260-1

R.T.: 6.338 min
 Delta R.T.: 0.001 min
 Response: 47686479
 Conc: 488.79 ng/ml



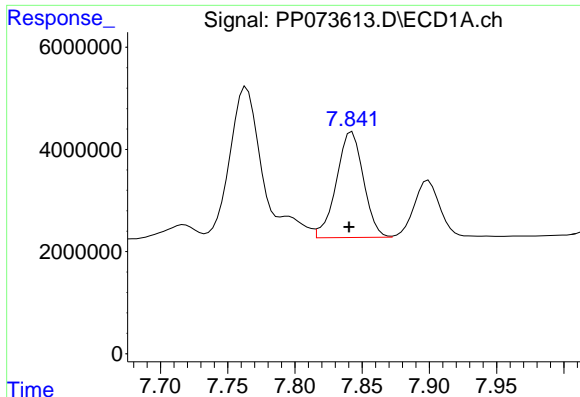
#32 AR-1260-2

R.T.: 7.485 min
 Delta R.T.: 0.002 min
 Response: 41209705
 Conc: 429.99 ng/ml



#32 AR-1260-2

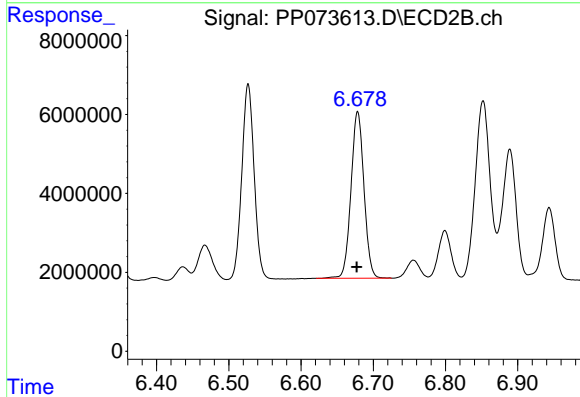
R.T.: 6.527 min
 Delta R.T.: 0.002 min
 Response: 58789418
 Conc: 478.59 ng/ml



#33 AR-1260-3

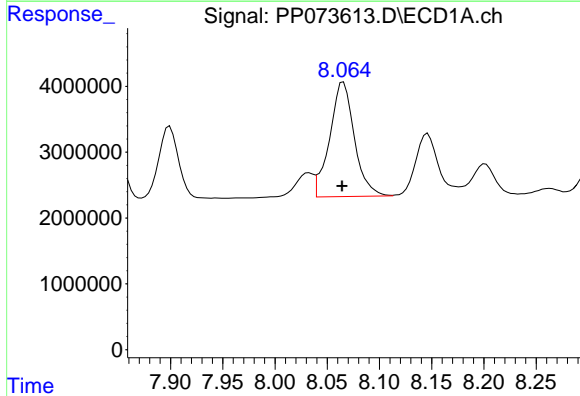
R.T.: 7.842 min
 Delta R.T.: 0.002 min
 Response: 28919885
 Conc: 395.78 ng/ml

Instrument :
 ECD_P
 ClientSampleId :
 PB168754BSD



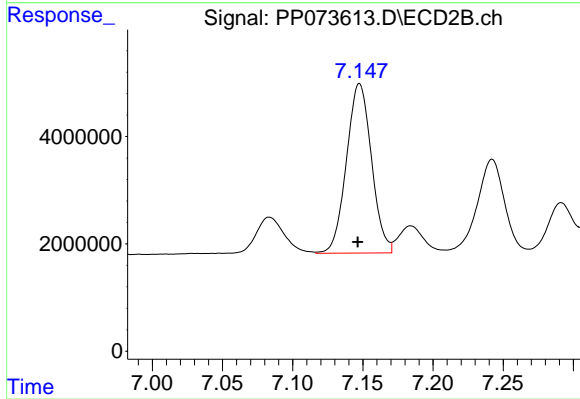
#33 AR-1260-3

R.T.: 6.678 min
 Delta R.T.: 0.002 min
 Response: 52665426
 Conc: 481.12 ng/ml



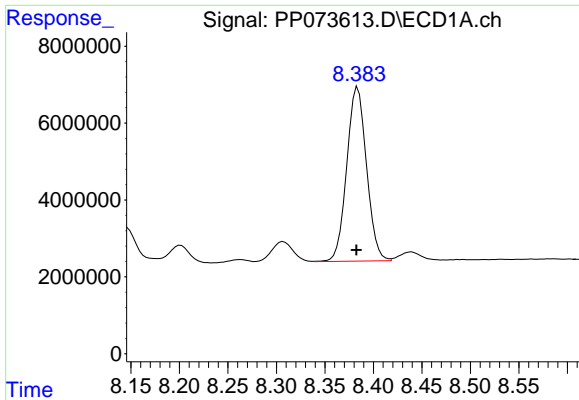
#34 AR-1260-4

R.T.: 8.066 min
 Delta R.T.: 0.001 min
 Response: 28634999
 Conc: 438.52 ng/ml



#34 AR-1260-4

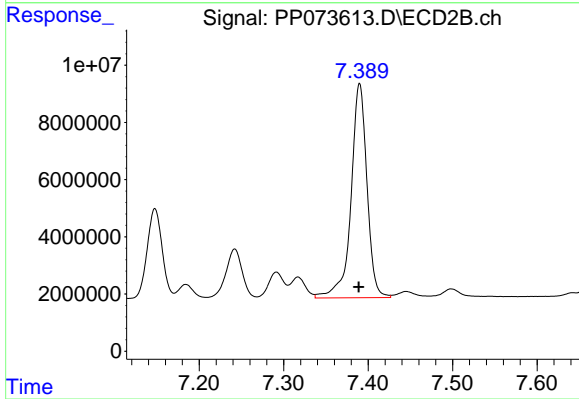
R.T.: 7.148 min
 Delta R.T.: 0.001 min
 Response: 39202597
 Conc: 438.47 ng/ml



#35 AR-1260-5

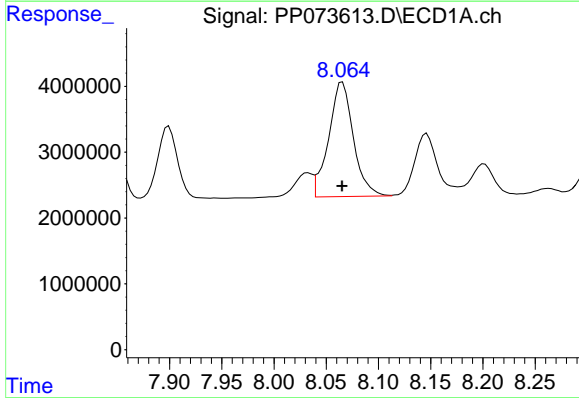
R.T.: 8.384 min
 Delta R.T.: 0.001 min
 Response: 64197548
 Conc: 425.56 ng/ml

Instrument :
 ECD_P
 ClientSampleId :
 PB168754BSD



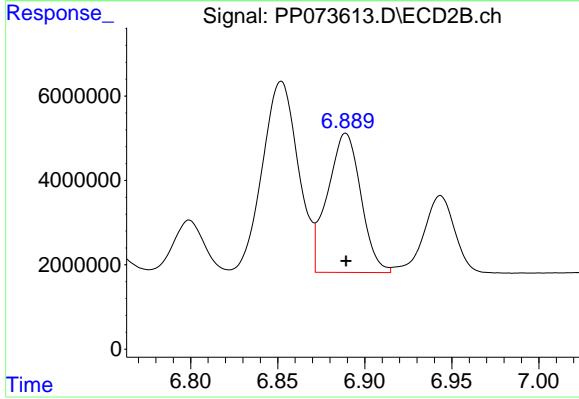
#35 AR-1260-5

R.T.: 7.390 min
 Delta R.T.: 0.001 min
 Response: 98202517
 Conc: 436.97 ng/ml



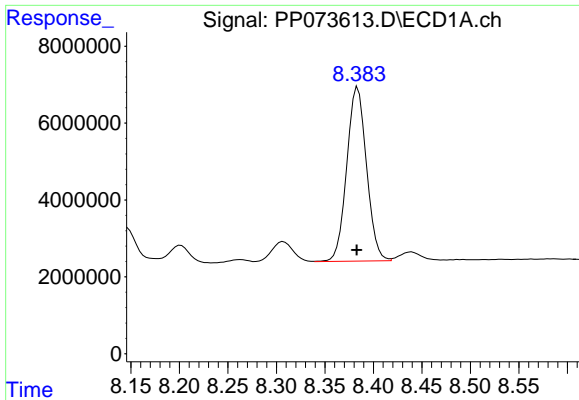
#36 AR-1262-1

R.T.: 8.066 min
 Delta R.T.: 0.000 min
 Response: 28634999
 Conc: 329.03 ng/ml



#36 AR-1262-1

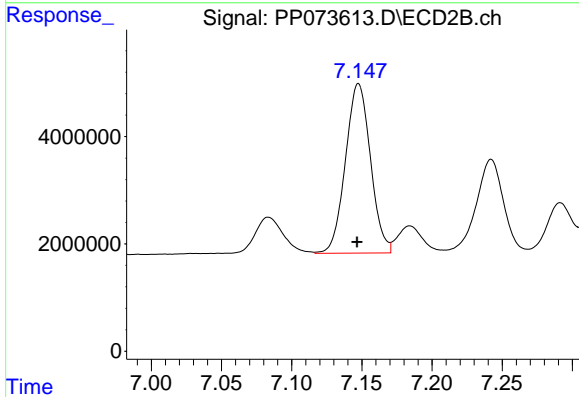
R.T.: 6.889 min
 Delta R.T.: 0.000 min
 Response: 43889793
 Conc: 297.17 ng/ml



#37 AR-1262-2

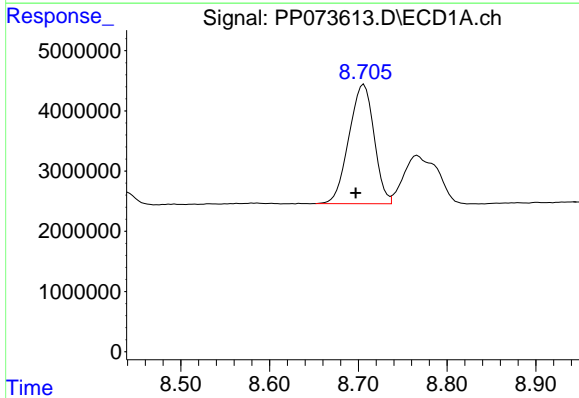
R.T.: 8.384 min
 Delta R.T.: 0.000 min
 Response: 64197548
 Conc: 324.18 ng/ml

Instrument :
 ECD_P
 ClientSampleId :
 PB168754BSD



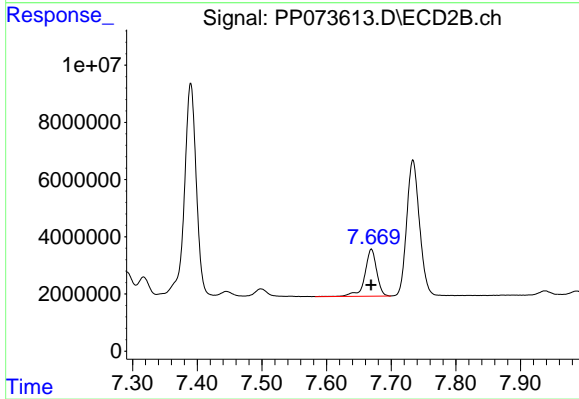
#37 AR-1262-2

R.T.: 7.148 min
 Delta R.T.: 0.000 min
 Response: 39202597
 Conc: 306.68 ng/ml



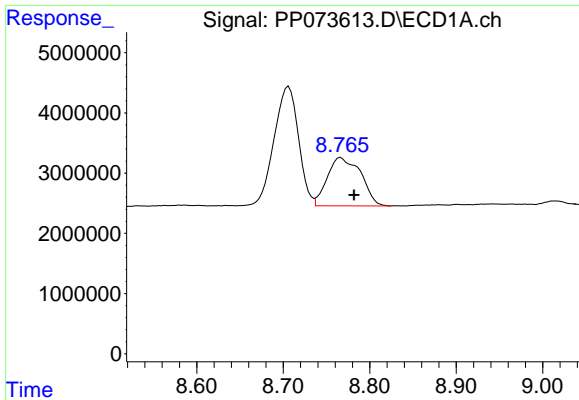
#38 AR-1262-3

R.T.: 8.706 min
 Delta R.T.: 0.009 min
 Response: 38963578
 Conc: 309.91 ng/ml



#38 AR-1262-3

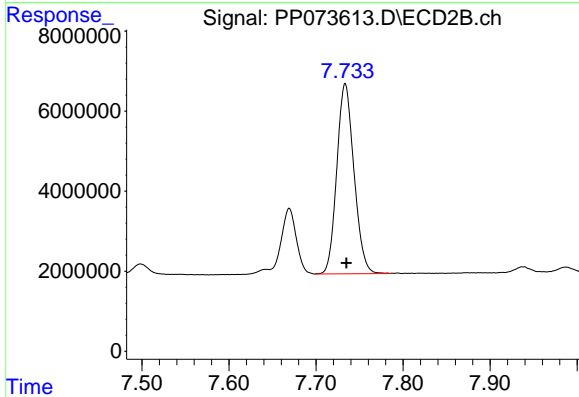
R.T.: 7.669 min
 Delta R.T.: 0.000 min
 Response: 20956387
 Conc: 183.80 ng/ml



#39 AR-1262-4

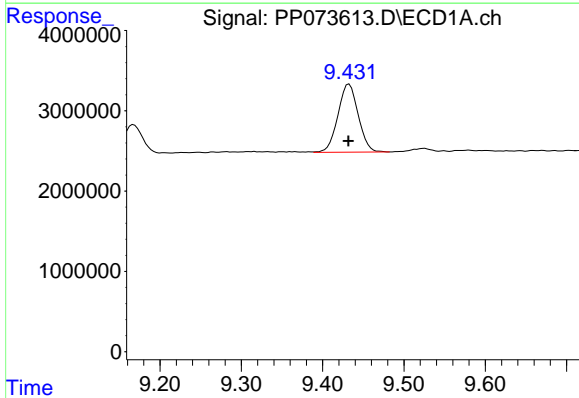
R.T.: 8.767 min
Delta R.T.: -0.016 min
Response: 21623842
Conc: 231.86 ng/ml

Instrument :
ECD_P
ClientSampleId :
PB168754BSD



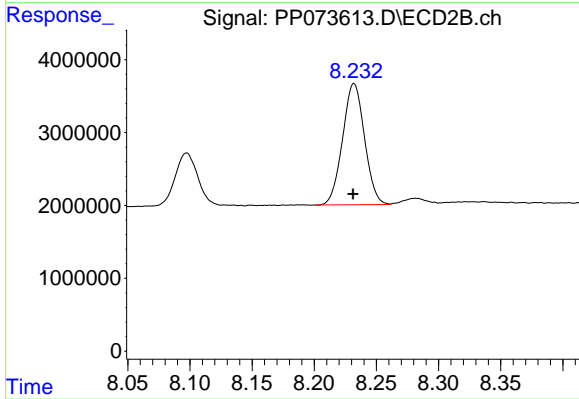
#39 AR-1262-4

R.T.: 7.734 min
Delta R.T.: -0.001 min
Response: 65209382
Conc: 354.30 ng/ml



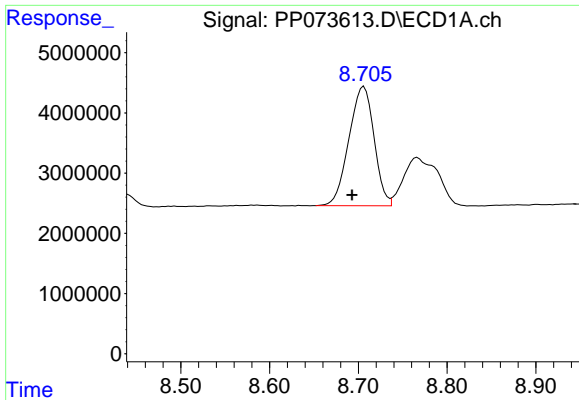
#40 AR-1262-5

R.T.: 9.433 min
Delta R.T.: 0.000 min
Response: 14693154
Conc: 231.79 ng/ml



#40 AR-1262-5

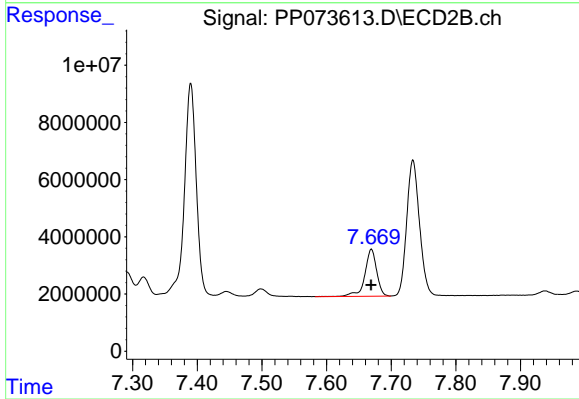
R.T.: 8.232 min
Delta R.T.: 0.000 min
Response: 20450253
Conc: 242.20 ng/ml



#41 AR-1268-1

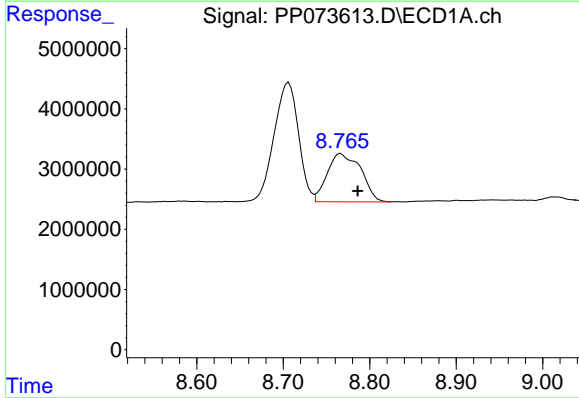
R.T.: 8.706 min
 Delta R.T.: 0.014 min
 Response: 38963578
 Conc: 174.55 ng/ml

Instrument :
 ECD_P
 ClientSampleId :
 PB168754BSD



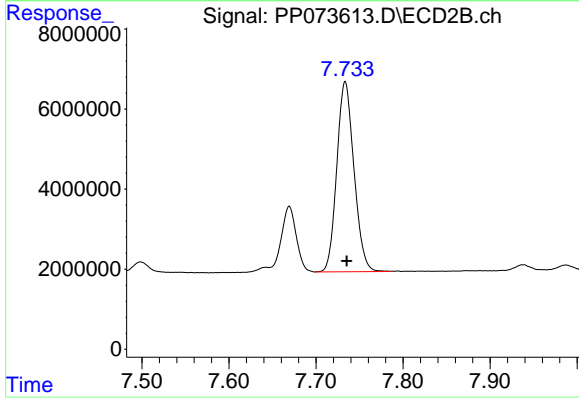
#41 AR-1268-1

R.T.: 7.669 min
 Delta R.T.: 0.000 min
 Response: 20956387
 Conc: 68.18 ng/ml



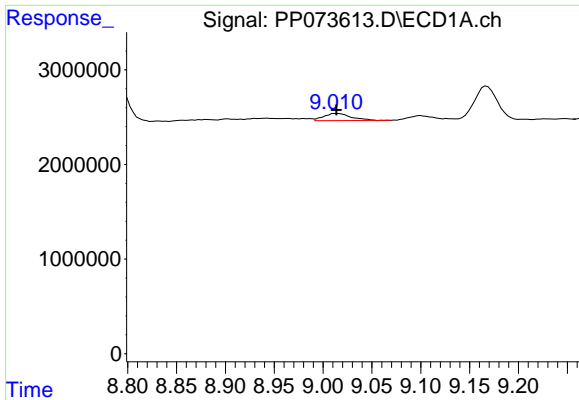
#42 AR-1268-2

R.T.: 8.767 min
 Delta R.T.: -0.019 min
 Response: 21623842
 Conc: 113.51 ng/ml



#42 AR-1268-2

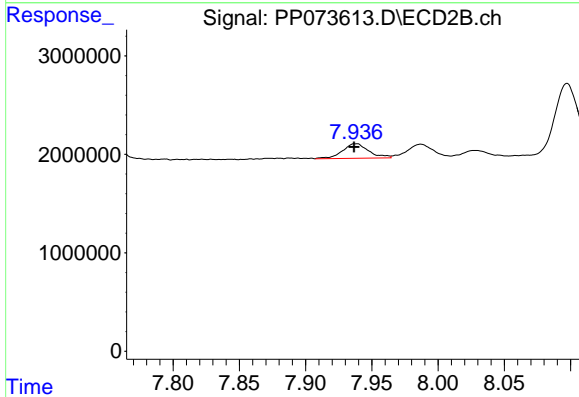
R.T.: 7.734 min
 Delta R.T.: -0.002 min
 Response: 65209382
 Conc: 245.44 ng/ml



#43 AR-1268-3

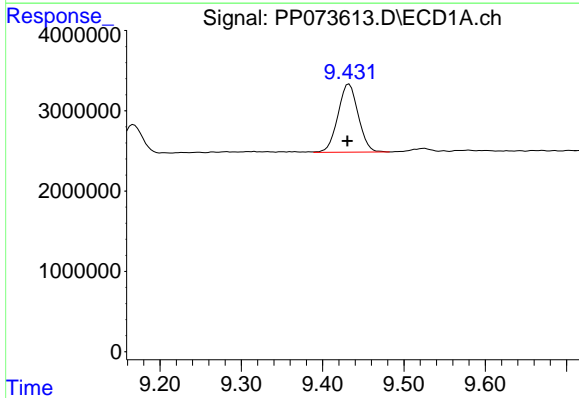
R.T.: 9.014 min
 Delta R.T.: 0.000 min
 Response: 1476388
 Conc: 8.92 ng/ml

Instrument :
 ECD_P
 ClientSampleId :
 PB168754BSD



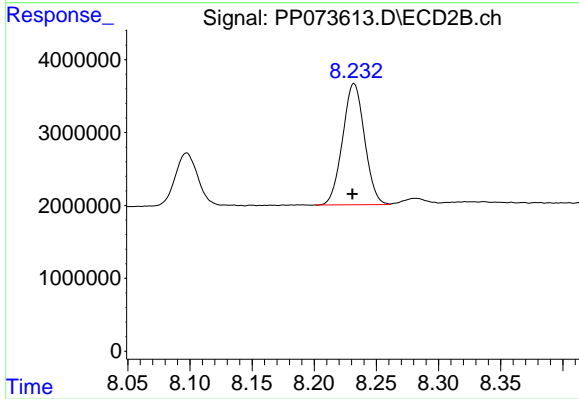
#43 AR-1268-3

R.T.: 7.938 min
 Delta R.T.: 0.001 min
 Response: 2046740
 Conc: 9.07 ng/ml



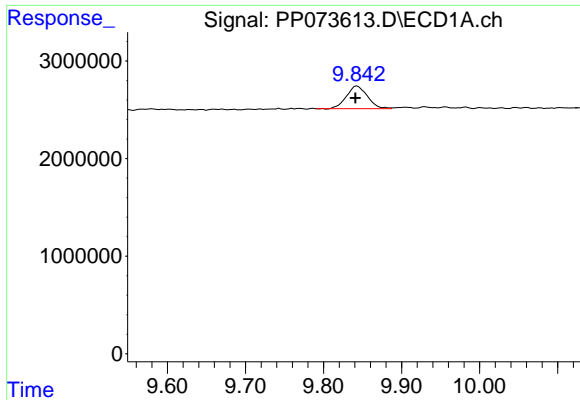
#44 AR-1268-4

R.T.: 9.433 min
 Delta R.T.: 0.002 min
 Response: 14693154
 Conc: 211.28 ng/ml



#44 AR-1268-4

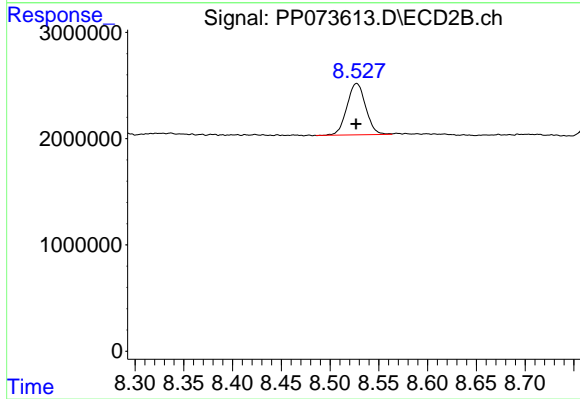
R.T.: 8.232 min
 Delta R.T.: 0.001 min
 Response: 20450253
 Conc: 219.97 ng/ml



#45 AR-1268-5

R.T.: 9.843 min
Delta R.T.: 0.002 min
Response: 4320225
Conc: 9.37 ng/ml

Instrument :
ECD_P
ClientSampleId :
PB168754BSD



#45 AR-1268-5

R.T.: 8.527 min
Delta R.T.: 0.000 min
Response: 6461777
Conc: 10.48 ng/ml