

Data Path : Z:\pestpcbsrv\HPCHEM1\ECD\_P\Data\PP070925\  
 Data File : PP073618.D  
 Signal(s) : Signal #1: ECD1A.ch Signal #2: ECD2B.ch  
 Acq On : 08 Jul 2025 18:45  
 Operator : YP\AJ  
 Sample : AR1660CCC500  
 Misc :  
 ALS Vial : 3 Sample Multiplier: 1

Instrument :  
 ECD\_P  
 ClientSampleId :  
 AR1660CCC500

Integration File signal 1: autoint1.e  
 Integration File signal 2: autoint2.e  
 Quant Time: Jul 09 01:43:47 2025  
 Quant Method : Z:\pestpcbsrv\HPCHEM1\ECD\_P\methods\PP070825.M  
 Quant Title : GC EXTRACTABLES  
 QLast Update : Tue Jul 08 08:35:32 2025  
 Response via : Initial Calibration  
 Integrator: ChemStation

Volume Inj. : 2 µl  
 Signal #1 Phase : ZB-MR1 Signal #2 Phase: ZB-MR2  
 Signal #1 Info : 30Mx0.32mmx 0.50µ Signal #2 Info : 30M x 0.32mm x 0.25µm

Compound	RT#1	RT#2	Resp#1	Resp#2	ng/ml	ng/ml
System Monitoring Compounds						
1) SA Tetrachlo...	4.491	3.780	72754200	95642282	53.124	51.915
2) SA Decachlor...	10.180	8.781	57148484	75085110	52.379	56.747
Target Compounds						
3) L1 AR-1016-1	5.641	4.858	23496251	35653815	494.517	522.977
4) L1 AR-1016-2	5.663	4.876	36223329	52570839	508.648	515.985
5) L1 AR-1016-3	5.725	5.052	21983099	28304053	503.471	523.119
6) L1 AR-1016-4	5.822	5.094	18468772	22568467	513.798	514.313
7) L1 AR-1016-5	6.114	5.308	16793642	29714255	536.017	544.392
8) L2 AR-1221-1	4.689	3.988	2576869	4222184	144.230	156.117
9) L2 AR-1221-2	4.779	4.076	3946728	5944159	292.253	291.948
10) L2 AR-1221-3	4.853	4.150	14112122	20457261	339.194	332.916
11) L3 AR-1232-1	4.853	4.150	14112122	20457261	432.215	438.862
12) L3 AR-1232-2	5.377	4.876	17949790	52570839	1104.284	1103.043
13) L3 AR-1232-3	5.663	5.052	36223329	28304053	1097.894	1130.849
14) L3 AR-1232-4	5.822	5.136	18468772	26971628	1123.052	1245.441
15) L3 AR-1232-5	5.912	5.308	14362207	29714255	1358.725	1316.920
16) L4 AR-1242-1	5.641	4.858	23496251	35653815	615.275	617.224
17) L4 AR-1242-2	5.663	4.876	36223329	52570839	604.911	608.077
18) L4 AR-1242-3	5.725	5.052	21983099	28304053	600.288	616.020
19) L4 AR-1242-4	5.822	5.136	18468772	26971628	574.706	609.345
20) L4 AR-1242-5	6.553	5.658	5844024	28957366	178.515	524.187 #
21) L5 AR-1248-1	5.641	4.858	23496251	35653815	761.122	794.162
22) L5 AR-1248-2	5.912	5.094	14362207	22568467	359.745	366.749
23) L5 AR-1248-3	6.114	5.136	16793642	26971628	378.153	421.007
24) L5 AR-1248-4	6.513	5.308	6448089	29714255	117.067	394.206 #
25) L5 AR-1248-5	6.553	5.698	5844024	8067612	108.644	108.158
26) L6 AR-1254-1	6.488	5.658	14975120	28957366	279.441	249.568
27) L6 AR-1254-2	6.704	5.806	14229339	21208551	170.843	210.771
28) L6 AR-1254-3	7.068	6.222	9400227	38700984	106.420	250.579 #
29) L6 AR-1254-4	7.351	6.436	6920974	4479774	87.978	47.375 #
30) L6 AR-1254-5	7.765	6.852	46051267	65175232	625.019	488.406
31) L7 AR-1260-1	7.232	6.338	30486231	50051665	517.055	513.033
32) L7 AR-1260-2	7.485	6.526	42457148	63278675	443.001	515.141
33) L7 AR-1260-3	7.843	6.678	36720039	56141451	502.528	512.877
34) L7 AR-1260-4	8.067	7.147	33430532	47084964	511.954	526.628
35) L7 AR-1260-5	8.384	7.389	78567314	116.3E6	520.821	517.385
36) L8 AR-1262-1	8.067	6.888	33430532	55317797	384.139	374.549
37) L8 AR-1262-2	8.384	7.147	78567314	47084964	396.749	368.343
38) L8 AR-1262-3	8.705	7.669	47349211	29918178	376.609	262.396 #
39) L8 AR-1262-4	8.769	7.733	30596645	79930202	328.069	434.287 #
40) L8 AR-1262-5	9.433	8.231	22680397	30075938	357.795	356.200
41) L9 AR-1268-1	8.705	7.669	47349211	29918178	212.116	97.334 #

Data Path : Z:\pestpcbsrv\HPCHEM1\ECD\_P\Data\PP070925\  
 Data File : PP073618.D  
 Signal(s) : Signal #1: ECD1A.ch Signal #2: ECD2B.ch  
 Acq On : 08 Jul 2025 18:45  
 Operator : YP\AJ  
 Sample : AR1660CCC500  
 Misc :  
 ALS Vial : 3 Sample Multiplier: 1

Instrument :  
 ECD\_P  
 ClientSampleId :  
 AR1660CCC500

Integration File signal 1: autoint1.e  
 Integration File signal 2: autoint2.e  
 Quant Time: Jul 09 01:43:47 2025  
 Quant Method : Z:\pestpcbsrv\HPCHEM1\ECD\_P\methods\PP070825.M  
 Quant Title : GC EXTRACTABLES  
 QLast Update : Tue Jul 08 08:35:32 2025  
 Response via : Initial Calibration  
 Integrator: ChemStation

Volume Inj. : 2 µl  
 Signal #1 Phase : ZB-MR1 Signal #2 Phase: ZB-MR2  
 Signal #1 Info : 30Mx0.32mmx 0.50µ Signal #2 Info : 30M x 0.32mm x 0.25µm

	Compound	RT#1	RT#2	Resp#1	Resp#2	ng/ml	ng/ml
42)	L9 AR-1268-2	8.769	7.733	30596645	79930202	160.608	300.843 #
43)	L9 AR-1268-3	9.015	7.937	1551311	1723351	9.369	7.640
44)	L9 AR-1268-4	9.433	8.231	22680397	30075938	326.131	323.509
45)	L9 AR-1268-5	9.844	8.526	5768304	7801234	12.514	12.653

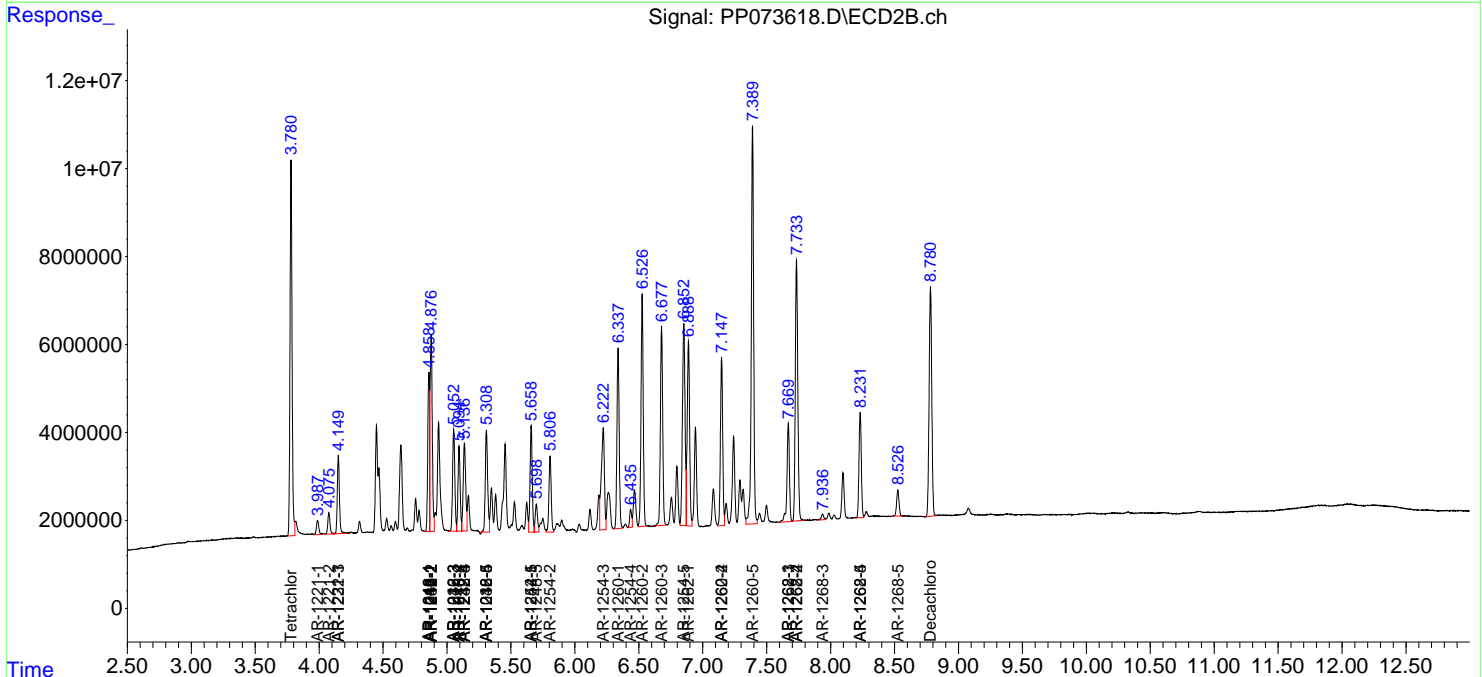
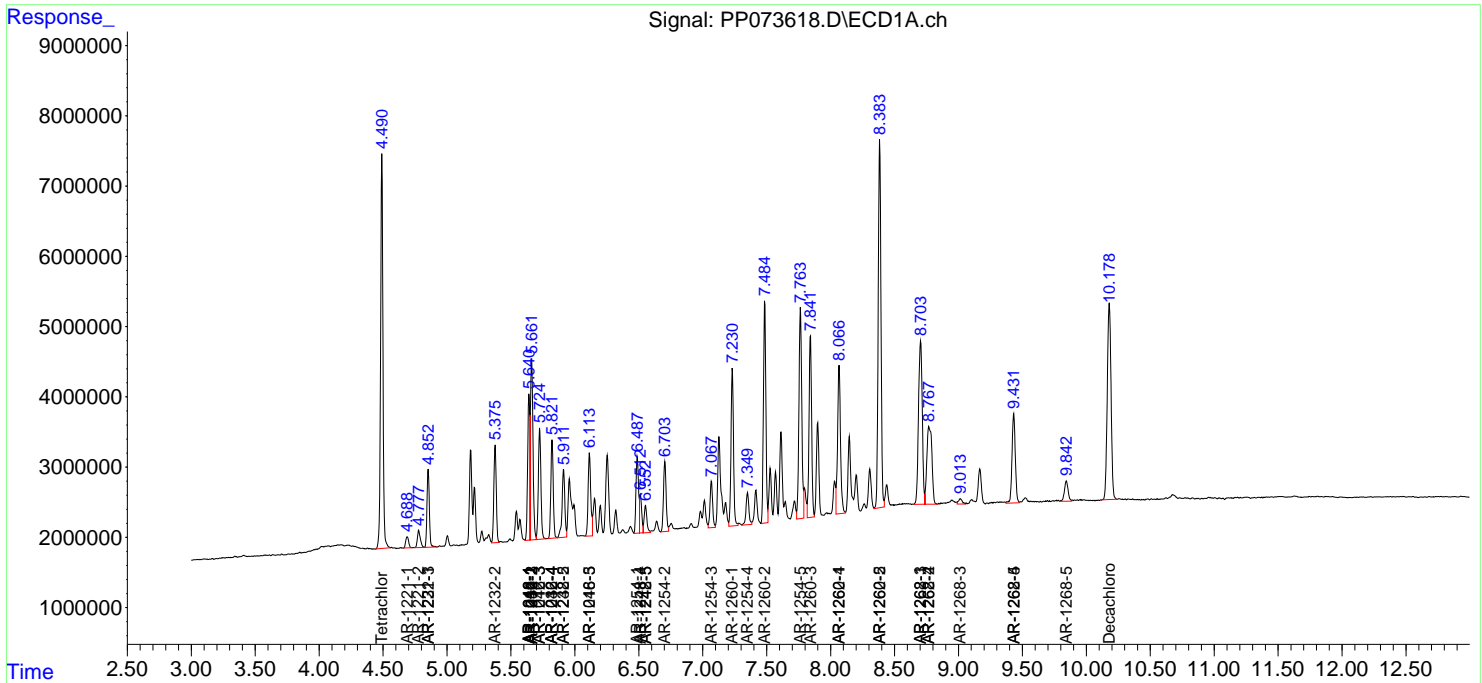
(f)=RT Delta > 1/2 Window (#)=Amounts differ by > 25% (m)=manual int.

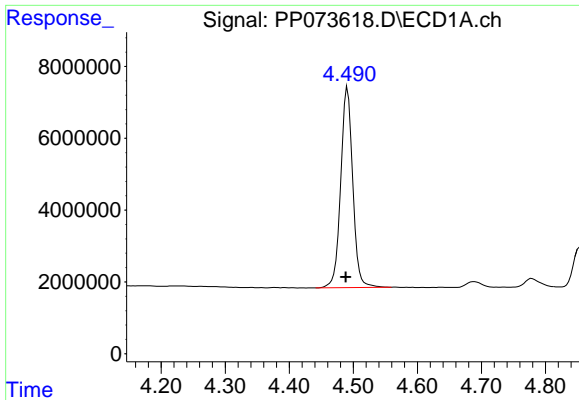
Data Path : Z:\pestpcbsrv\HPCHEM1\ECD\_P\Data\PP070925\  
 Data File : PP073618.D  
 Signal(s) : Signal #1: ECD1A.ch Signal #2: ECD2B.ch  
 Acq On : 08 Jul 2025 18:45  
 Operator : YP\AJ  
 Sample : AR1660CCC500  
 Misc :  
 ALS Vial : 3 Sample Multiplier: 1

Instrument :  
 ECD\_P  
 ClientSampleId :  
 AR1660CCC500

Integration File signal 1: autoint1.e  
 Integration File signal 2: autoint2.e  
 Quant Time: Jul 09 01:43:47 2025  
 Quant Method : Z:\pestpcbsrv\HPCHEM1\ECD\_P\methods\PP070825.M  
 Quant Title : GC EXTRACTABLES  
 QLast Update : Tue Jul 08 08:35:32 2025  
 Response via : Initial Calibration  
 Integrator: ChemStation

Volume Inj. : 2 µl  
 Signal #1 Phase : ZB-MR1 Signal #2 Phase: ZB-MR2  
 Signal #1 Info : 30Mx0.32mmx 0.50µ Signal #2 Info : 30M x 0.32mm x 0.25µm

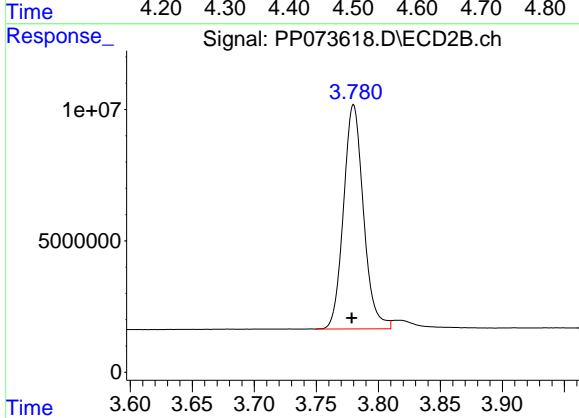




#1 Tetrachloro-m-xylene

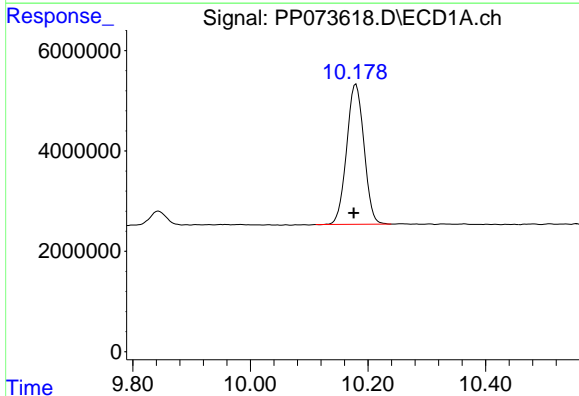
R.T.: 4.491 min  
 Delta R.T.: 0.003 min  
 Response: 72754200  
 Conc: 53.12 ng/ml

Instrument :  
 ECD\_P  
 ClientSampleId :  
 AR1660CCC500



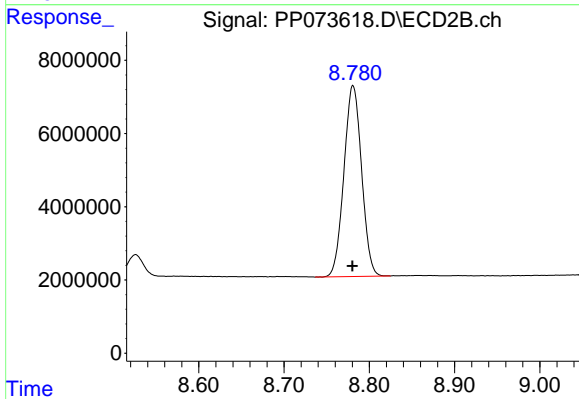
#1 Tetrachloro-m-xylene

R.T.: 3.780 min  
 Delta R.T.: 0.002 min  
 Response: 95642282  
 Conc: 51.91 ng/ml



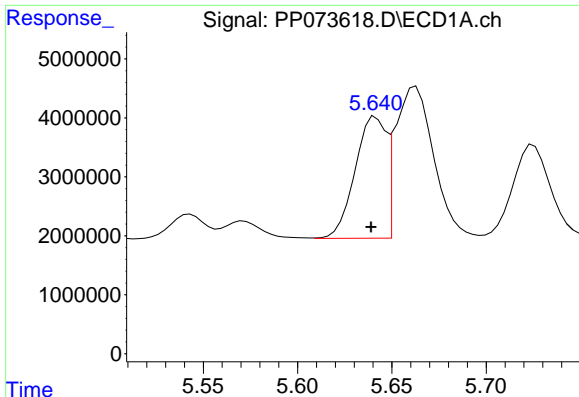
#2 Decachlorobiphenyl

R.T.: 10.180 min  
 Delta R.T.: 0.004 min  
 Response: 57148484  
 Conc: 52.38 ng/ml



#2 Decachlorobiphenyl

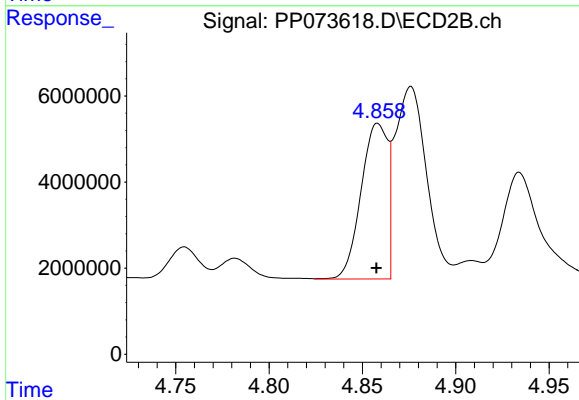
R.T.: 8.781 min  
 Delta R.T.: 0.000 min  
 Response: 75085110  
 Conc: 56.75 ng/ml



#3 AR-1016-1

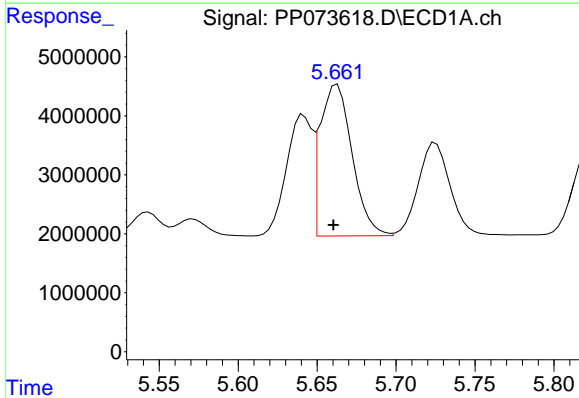
R.T.: 5.641 min  
 Delta R.T.: 0.002 min  
 Response: 23496251  
 Conc: 494.52 ng/ml

Instrument :  
 ECD\_P  
 ClientSampleId :  
 AR1660CCC500



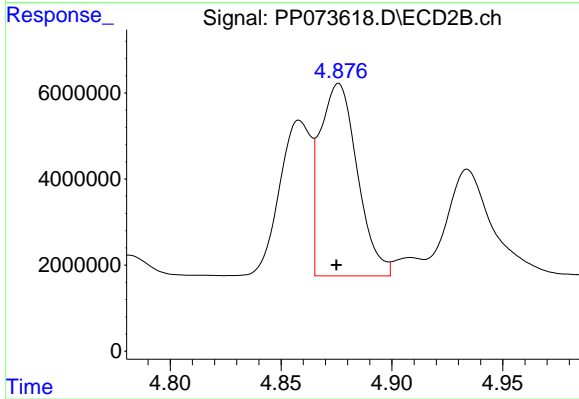
#3 AR-1016-1

R.T.: 4.858 min  
 Delta R.T.: 0.000 min  
 Response: 35653815  
 Conc: 522.98 ng/ml



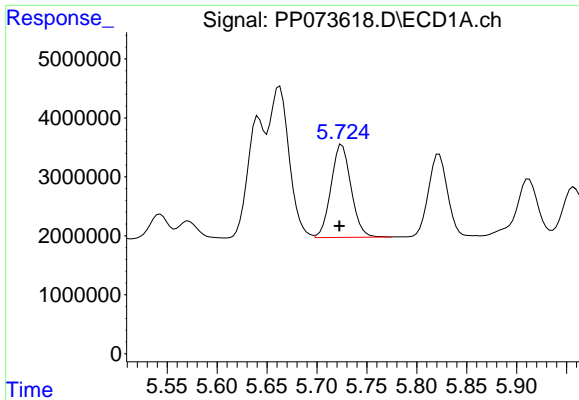
#4 AR-1016-2

R.T.: 5.663 min  
 Delta R.T.: 0.002 min  
 Response: 36223329  
 Conc: 508.65 ng/ml



#4 AR-1016-2

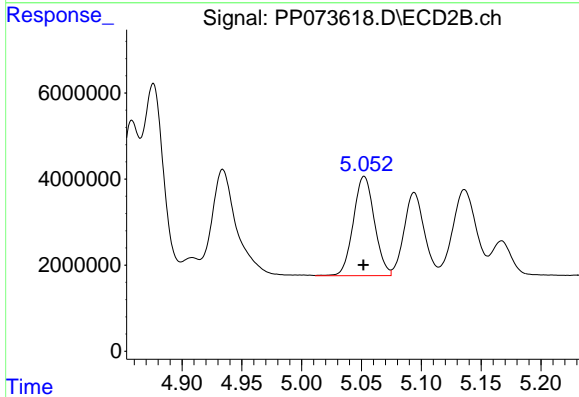
R.T.: 4.876 min  
 Delta R.T.: 0.000 min  
 Response: 52570839  
 Conc: 515.99 ng/ml



#5 AR-1016-3

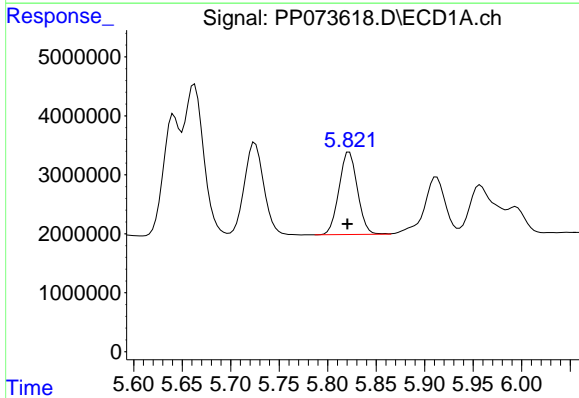
R.T.: 5.725 min  
 Delta R.T.: 0.003 min  
 Response: 21983099  
 Conc: 503.47 ng/ml

Instrument :  
 ECD\_P  
 ClientSampleId :  
 AR1660CCC500



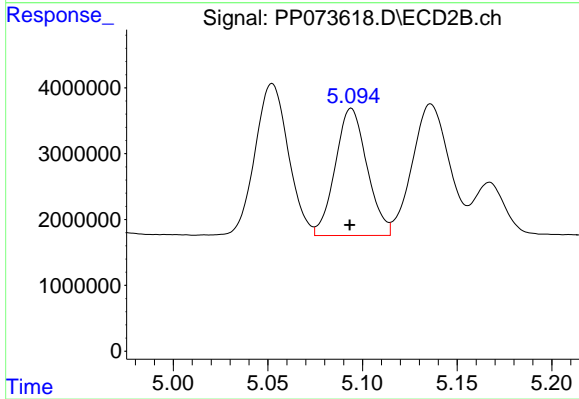
#5 AR-1016-3

R.T.: 5.052 min  
 Delta R.T.: 0.000 min  
 Response: 28304053  
 Conc: 523.12 ng/ml



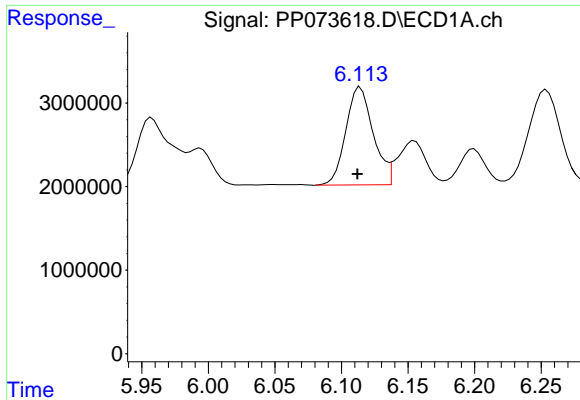
#6 AR-1016-4

R.T.: 5.822 min  
 Delta R.T.: 0.002 min  
 Response: 18468772  
 Conc: 513.80 ng/ml



#6 AR-1016-4

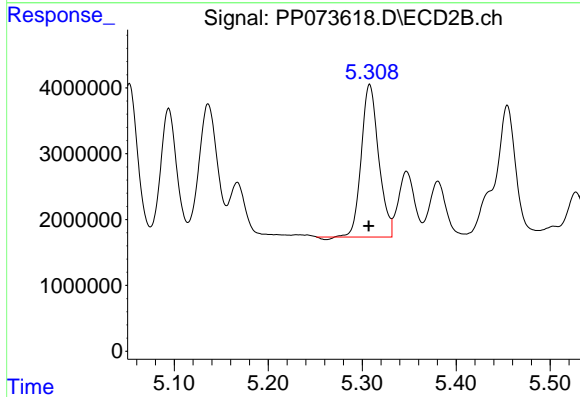
R.T.: 5.094 min  
 Delta R.T.: 0.000 min  
 Response: 22568467  
 Conc: 514.31 ng/ml



#7 AR-1016-5

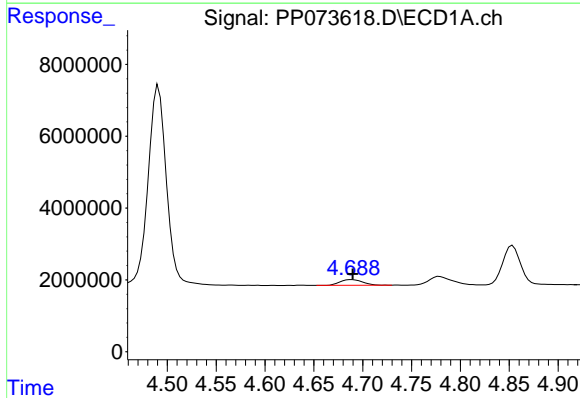
R.T.: 6.114 min  
 Delta R.T.: 0.002 min  
 Response: 16793642  
 Conc: 536.02 ng/ml

Instrument :  
 ECD\_P  
 ClientSampleId :  
 AR1660CCC500



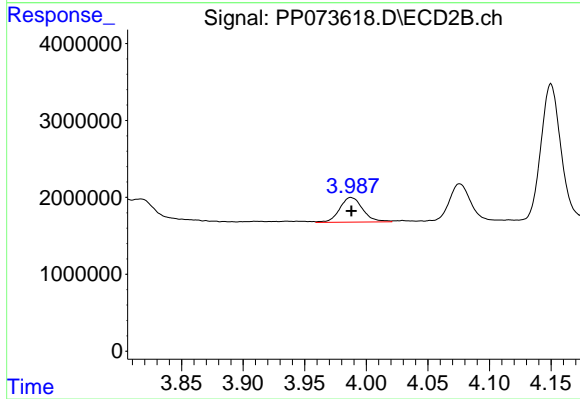
#7 AR-1016-5

R.T.: 5.308 min  
 Delta R.T.: 0.001 min  
 Response: 29714255  
 Conc: 544.39 ng/ml



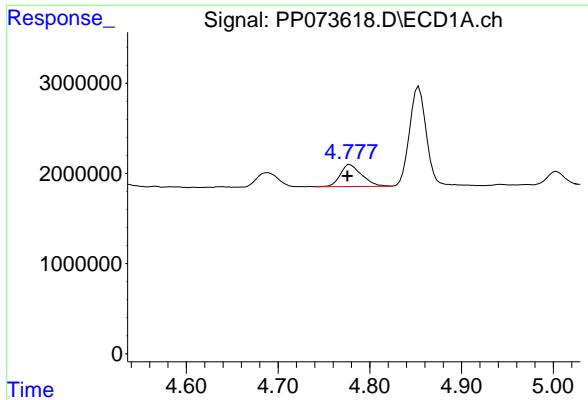
#8 AR-1221-1

R.T.: 4.689 min  
 Delta R.T.: 0.000 min  
 Response: 2576869  
 Conc: 144.23 ng/ml



#8 AR-1221-1

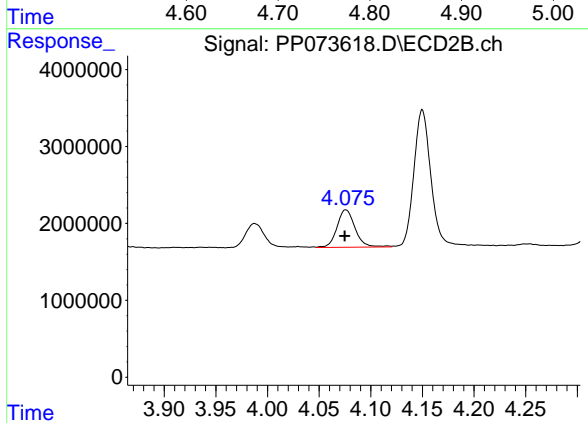
R.T.: 3.988 min  
 Delta R.T.: 0.000 min  
 Response: 4222184  
 Conc: 156.12 ng/ml



#9 AR-1221-2

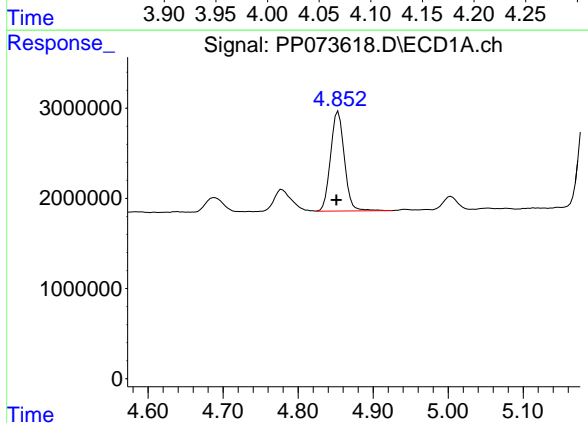
R.T.: 4.779 min  
 Delta R.T.: 0.003 min  
 Response: 3946728  
 Conc: 292.25 ng/ml

Instrument :  
 ECD\_P  
 ClientSampleId :  
 AR1660CCC500



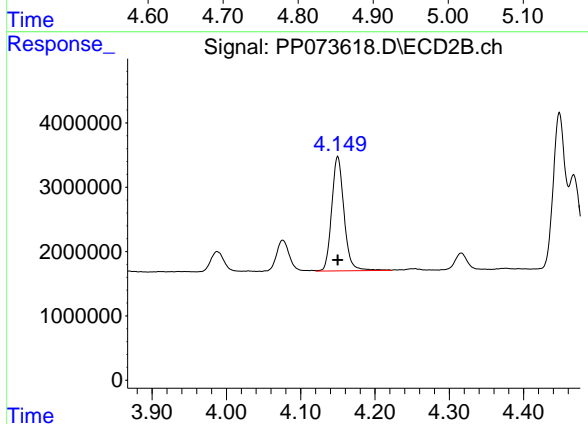
#9 AR-1221-2

R.T.: 4.076 min  
 Delta R.T.: 0.001 min  
 Response: 5944159  
 Conc: 291.95 ng/ml



#10 AR-1221-3

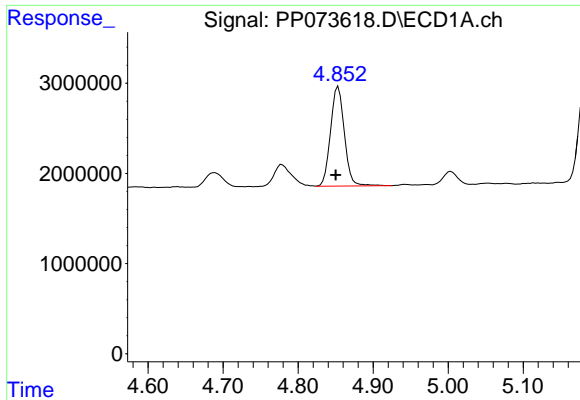
R.T.: 4.853 min  
 Delta R.T.: 0.003 min  
 Response: 14112122  
 Conc: 339.19 ng/ml



#10 AR-1221-3

R.T.: 4.150 min  
 Delta R.T.: 0.000 min  
 Response: 20457261  
 Conc: 332.92 ng/ml

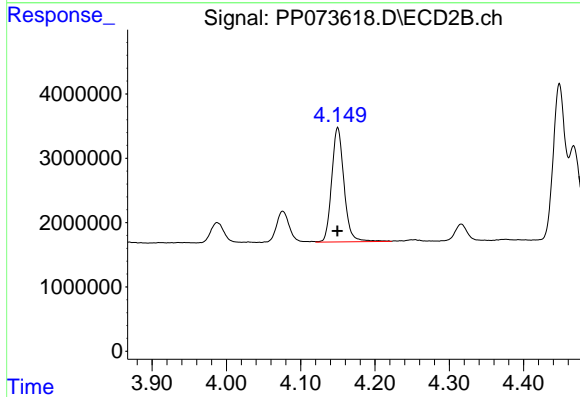




#11 AR-1232-1

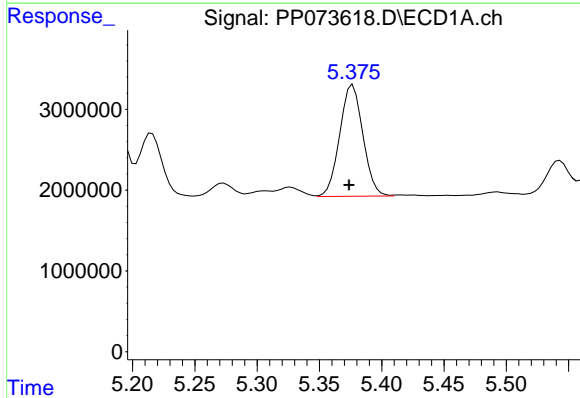
R.T.: 4.853 min  
 Delta R.T.: 0.003 min  
 Response: 14112122  
 Conc: 432.21 ng/ml

Instrument :  
 ECD\_P  
 ClientSampleId :  
 AR1660CCC500



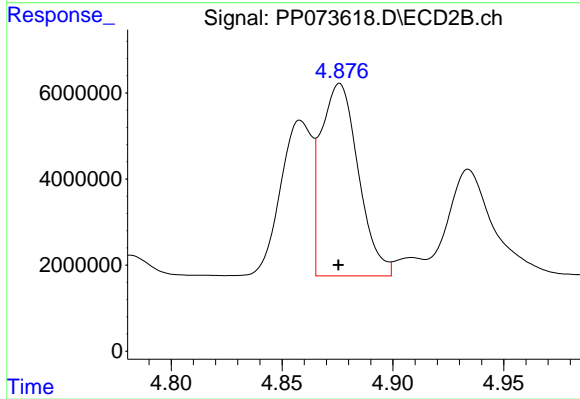
#11 AR-1232-1

R.T.: 4.150 min  
 Delta R.T.: 0.000 min  
 Response: 20457261  
 Conc: 438.86 ng/ml



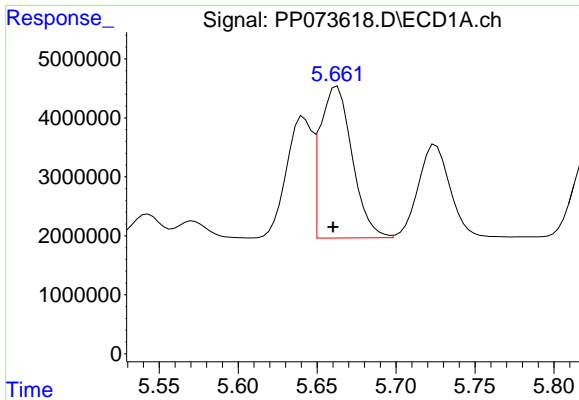
#12 AR-1232-2

R.T.: 5.377 min  
 Delta R.T.: 0.003 min  
 Response: 17949790  
 Conc: 1104.28 ng/ml



#12 AR-1232-2

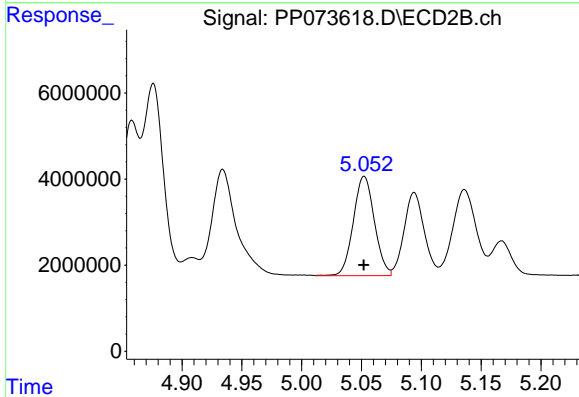
R.T.: 4.876 min  
 Delta R.T.: 0.000 min  
 Response: 52570839  
 Conc: 1103.04 ng/ml



#13 AR-1232-3

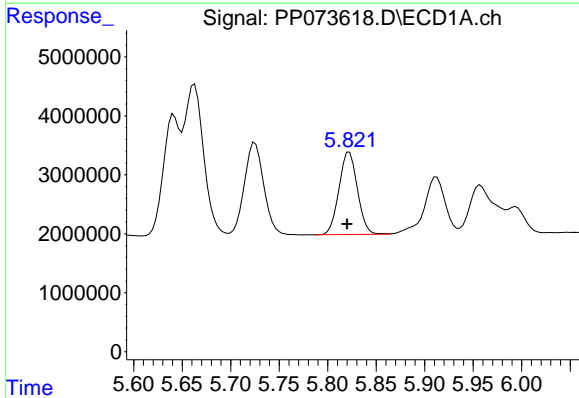
R.T.: 5.663 min  
 Delta R.T.: 0.003 min  
 Response: 36223329  
 Conc: 1097.89 ng/ml

Instrument :  
 ECD\_P  
 ClientSampleId :  
 AR1660CCC500



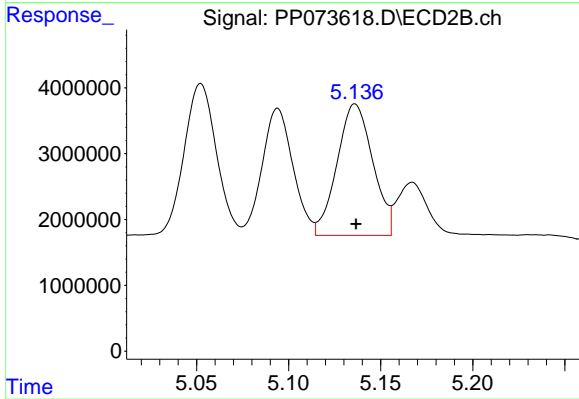
#13 AR-1232-3

R.T.: 5.052 min  
 Delta R.T.: 0.000 min  
 Response: 28304053  
 Conc: 1130.85 ng/ml



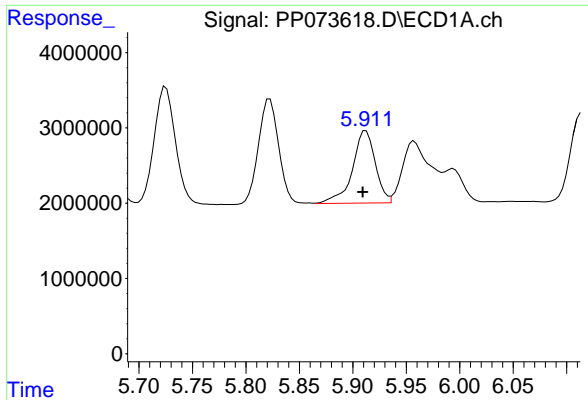
#14 AR-1232-4

R.T.: 5.822 min  
 Delta R.T.: 0.002 min  
 Response: 18468772  
 Conc: 1123.05 ng/ml



#14 AR-1232-4

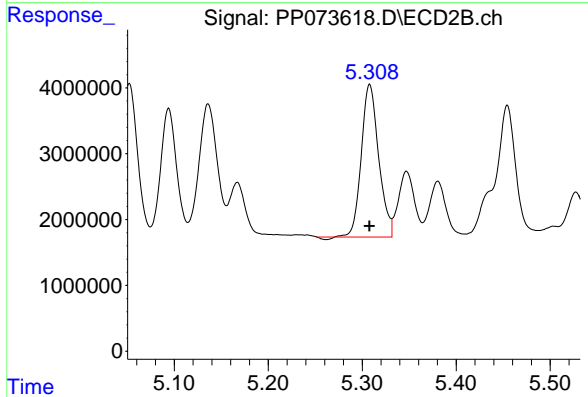
R.T.: 5.136 min  
 Delta R.T.: 0.000 min  
 Response: 26971628  
 Conc: 1245.44 ng/ml



#15 AR-1232-5

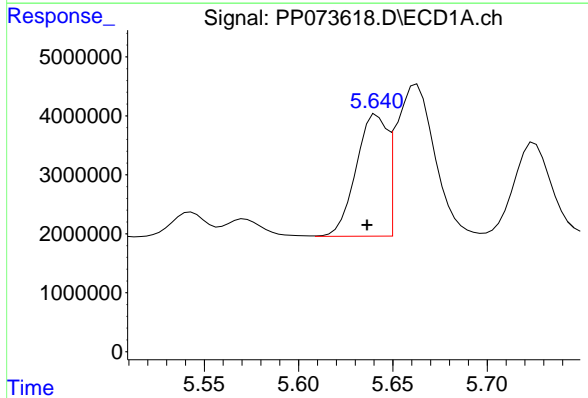
R.T.: 5.912 min  
 Delta R.T.: 0.003 min  
 Response: 14362207  
 Conc: 1358.72 ng/ml

Instrument :  
 ECD\_P  
 ClientSampleId :  
 AR1660CCC500



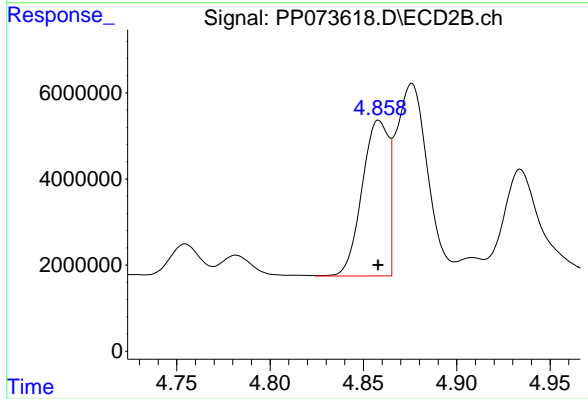
#15 AR-1232-5

R.T.: 5.308 min  
 Delta R.T.: 0.000 min  
 Response: 29714255  
 Conc: 1316.92 ng/ml



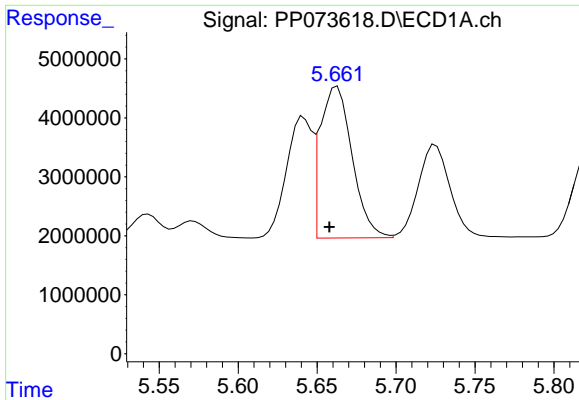
#16 AR-1242-1

R.T.: 5.641 min  
 Delta R.T.: 0.005 min  
 Response: 23496251  
 Conc: 615.27 ng/ml



#16 AR-1242-1

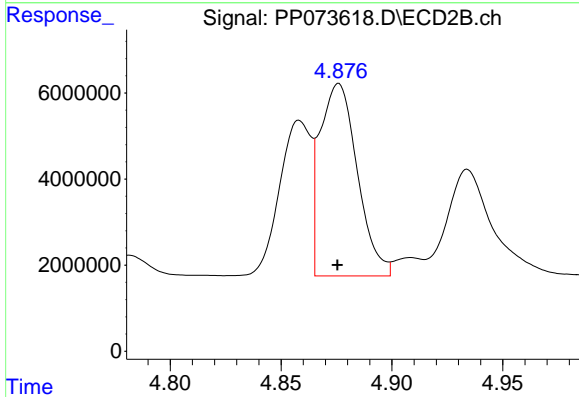
R.T.: 4.858 min  
 Delta R.T.: 0.000 min  
 Response: 35653815  
 Conc: 617.22 ng/ml



#17 AR-1242-2

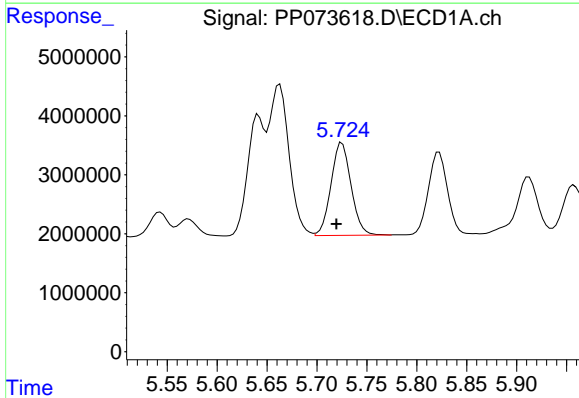
R.T.: 5.663 min  
 Delta R.T.: 0.005 min  
 Response: 36223329  
 Conc: 604.91 ng/ml

Instrument :  
 ECD\_P  
 ClientSampleId :  
 AR1660CCC500



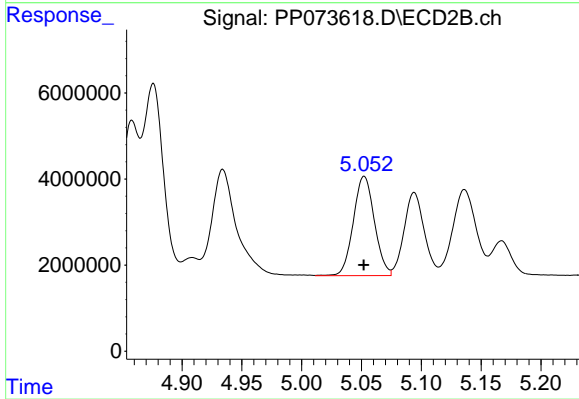
#17 AR-1242-2

R.T.: 4.876 min  
 Delta R.T.: 0.000 min  
 Response: 52570839  
 Conc: 608.08 ng/ml



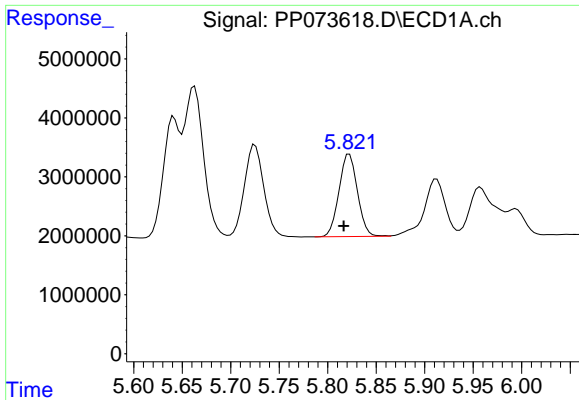
#18 AR-1242-3

R.T.: 5.725 min  
 Delta R.T.: 0.005 min  
 Response: 21983099  
 Conc: 600.29 ng/ml



#18 AR-1242-3

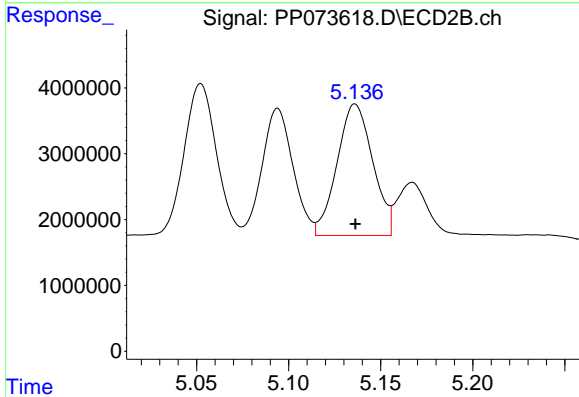
R.T.: 5.052 min  
 Delta R.T.: 0.000 min  
 Response: 28304053  
 Conc: 616.02 ng/ml



#19 AR-1242-4

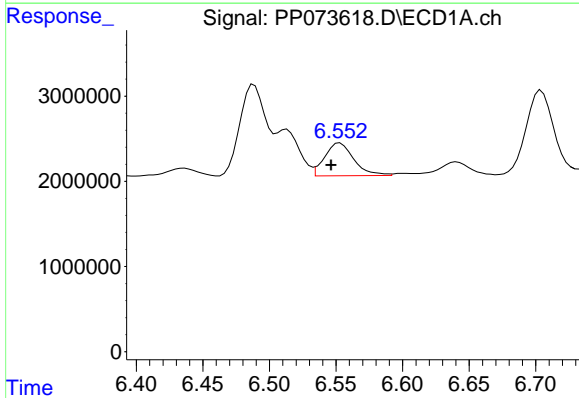
R.T.: 5.822 min  
 Delta R.T.: 0.006 min  
 Response: 18468772  
 Conc: 574.71 ng/ml

Instrument :  
 ECD\_P  
 ClientSampleId :  
 AR1660CCC500



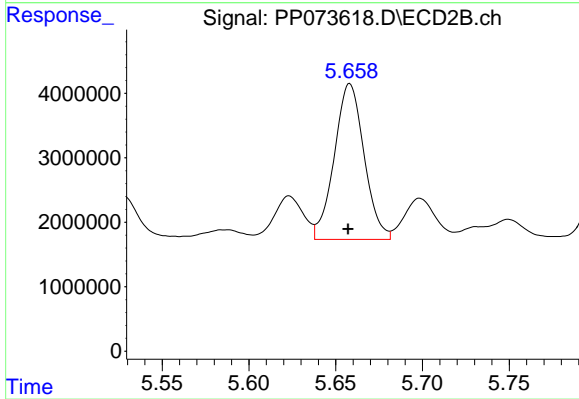
#19 AR-1242-4

R.T.: 5.136 min  
 Delta R.T.: 0.000 min  
 Response: 26971628  
 Conc: 609.35 ng/ml



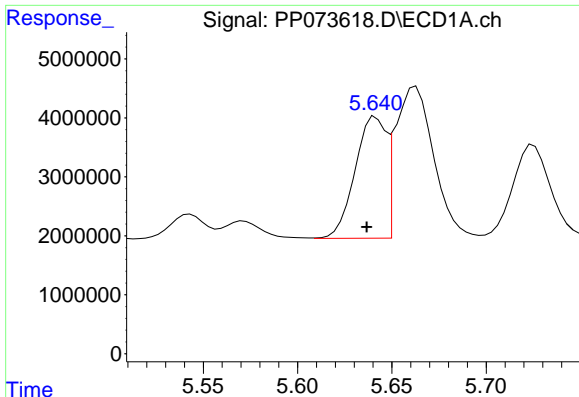
#20 AR-1242-5

R.T.: 6.553 min  
 Delta R.T.: 0.007 min  
 Response: 5844024  
 Conc: 178.52 ng/ml



#20 AR-1242-5

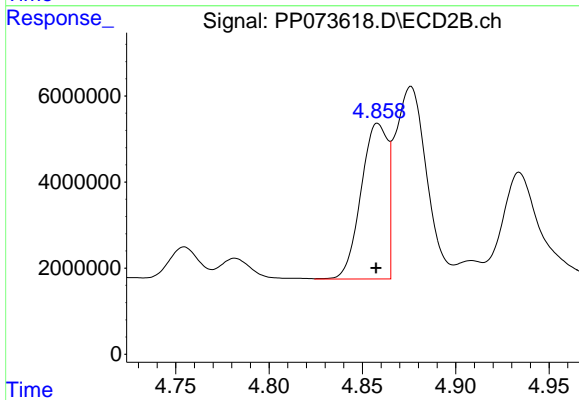
R.T.: 5.658 min  
 Delta R.T.: 0.000 min  
 Response: 28957366  
 Conc: 524.19 ng/ml



#21 AR-1248-1

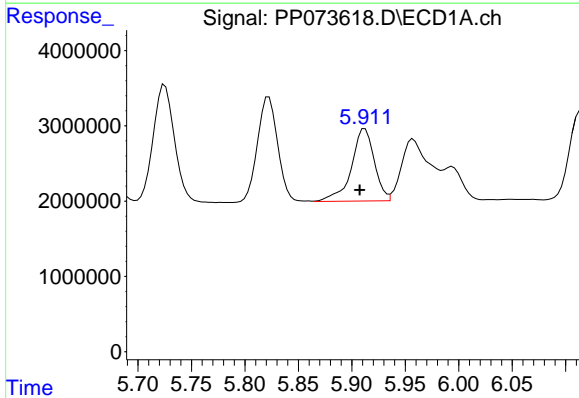
R.T.: 5.641 min  
 Delta R.T.: 0.005 min  
 Response: 23496251  
 Conc: 761.12 ng/ml

Instrument :  
 ECD\_P  
 ClientSampleId :  
 AR1660CCC500



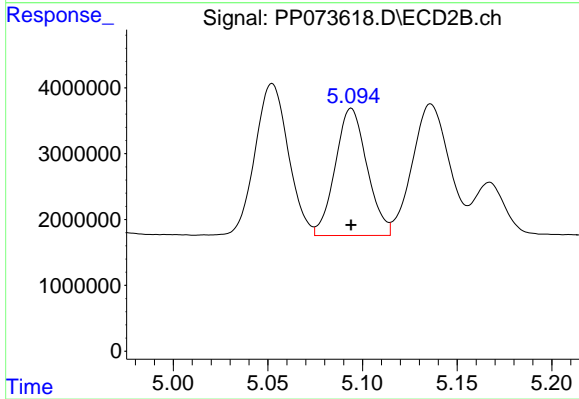
#21 AR-1248-1

R.T.: 4.858 min  
 Delta R.T.: 0.000 min  
 Response: 35653815  
 Conc: 794.16 ng/ml



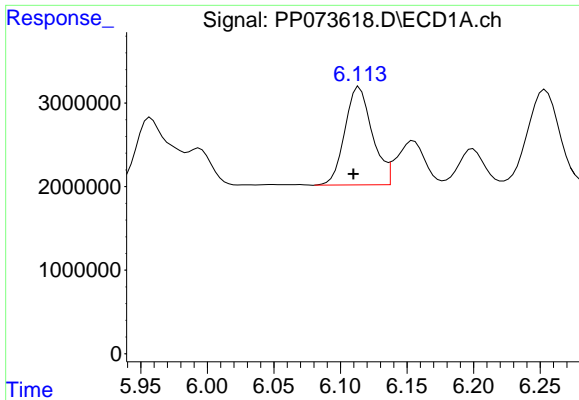
#22 AR-1248-2

R.T.: 5.912 min  
 Delta R.T.: 0.005 min  
 Response: 14362207  
 Conc: 359.74 ng/ml



#22 AR-1248-2

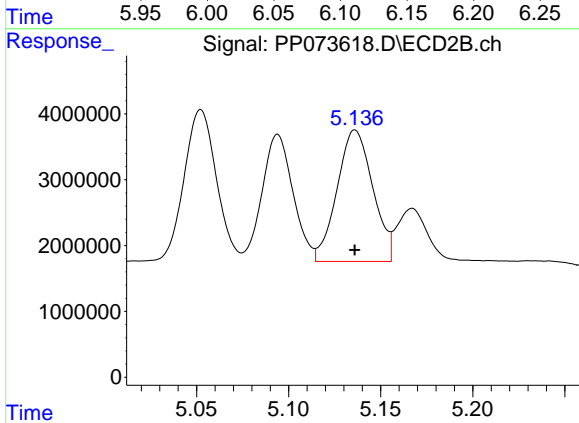
R.T.: 5.094 min  
 Delta R.T.: 0.000 min  
 Response: 22568467  
 Conc: 366.75 ng/ml



#23 AR-1248-3

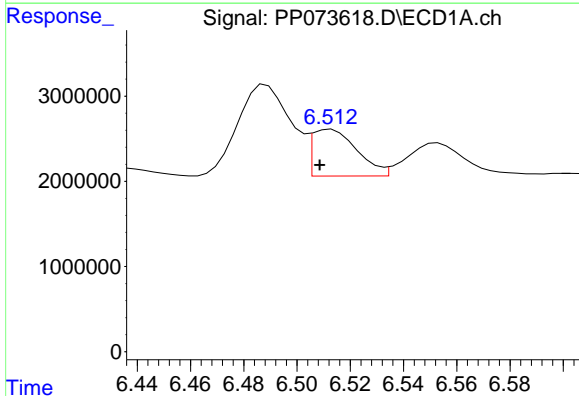
R.T.: 6.114 min  
 Delta R.T.: 0.005 min  
 Response: 16793642  
 Conc: 378.15 ng/ml

Instrument :  
 ECD\_P  
 ClientSampleId :  
 AR1660CCC500



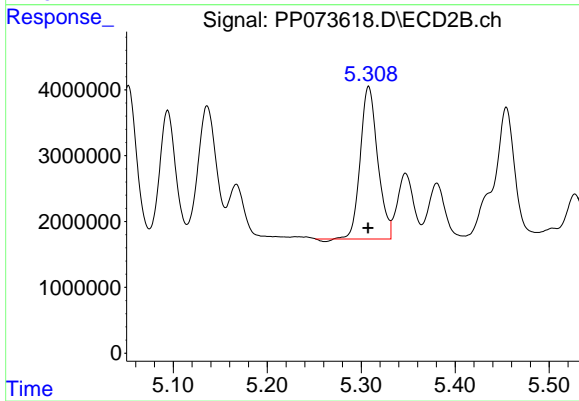
#23 AR-1248-3

R.T.: 5.136 min  
 Delta R.T.: 0.000 min  
 Response: 26971628  
 Conc: 421.01 ng/ml



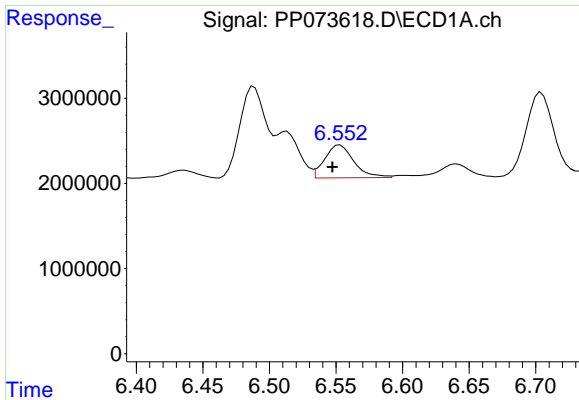
#24 AR-1248-4

R.T.: 6.513 min  
 Delta R.T.: 0.004 min  
 Response: 6448089  
 Conc: 117.07 ng/ml



#24 AR-1248-4

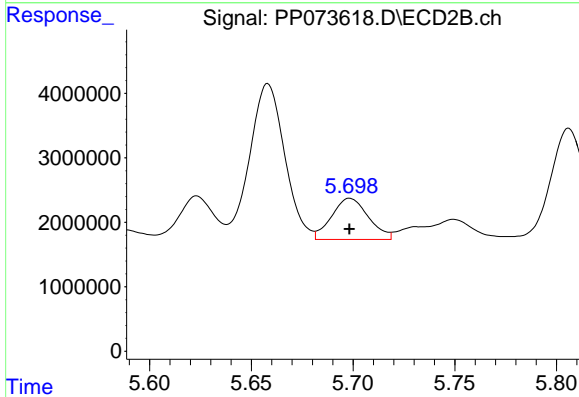
R.T.: 5.308 min  
 Delta R.T.: 0.000 min  
 Response: 29714255  
 Conc: 394.21 ng/ml



#25 AR-1248-5

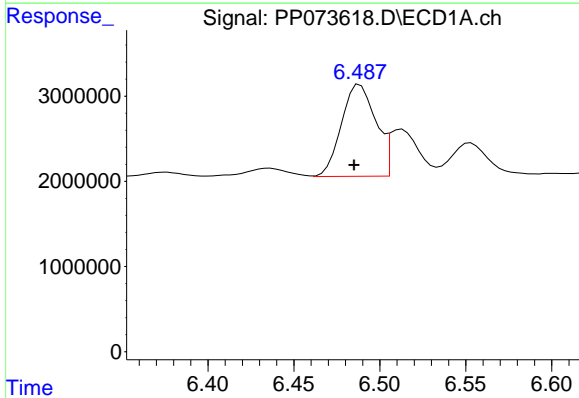
R.T.: 6.553 min  
 Delta R.T.: 0.006 min  
 Response: 5844024  
 Conc: 108.64 ng/ml

Instrument :  
 ECD\_P  
 ClientSampleId :  
 AR1660CCC500



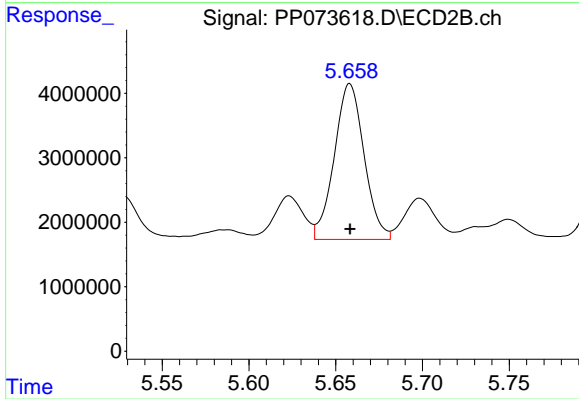
#25 AR-1248-5

R.T.: 5.698 min  
 Delta R.T.: 0.000 min  
 Response: 8067612  
 Conc: 108.16 ng/ml



#26 AR-1254-1

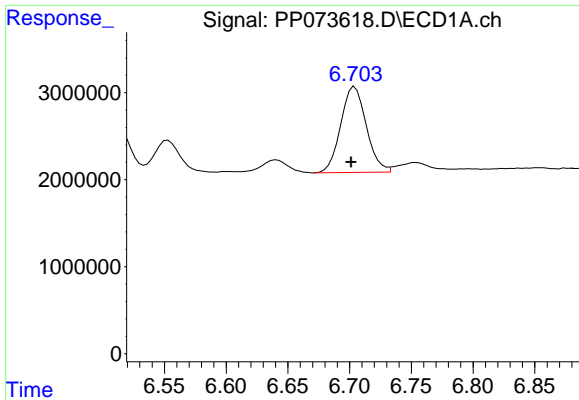
R.T.: 6.488 min  
 Delta R.T.: 0.003 min  
 Response: 14975120  
 Conc: 279.44 ng/ml



#26 AR-1254-1

R.T.: 5.658 min  
 Delta R.T.: 0.000 min  
 Response: 28957366  
 Conc: 249.57 ng/ml

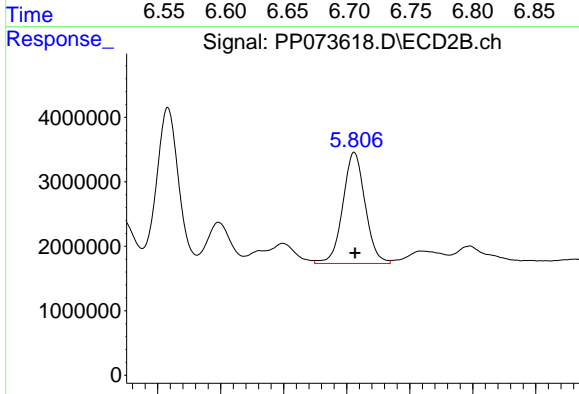




#27 AR-1254-2

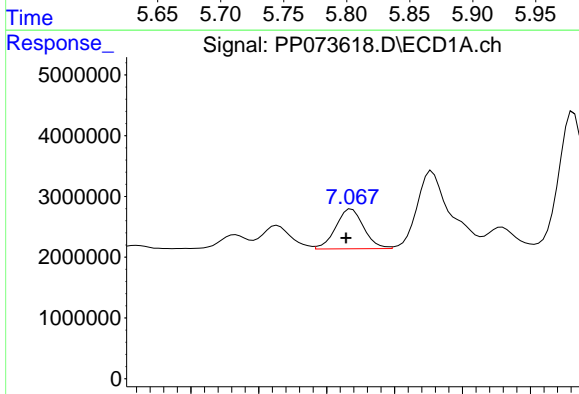
R.T.: 6.704 min  
 Delta R.T.: 0.003 min  
 Response: 14229339  
 Conc: 170.84 ng/ml

Instrument :  
 ECD\_P  
 ClientSampleId :  
 AR1660CCC500



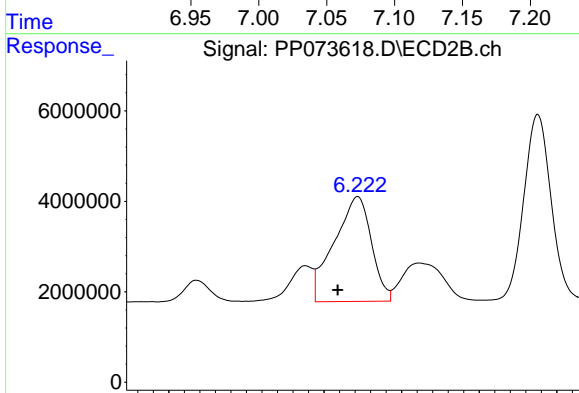
#27 AR-1254-2

R.T.: 5.806 min  
 Delta R.T.: 0.000 min  
 Response: 21208551  
 Conc: 210.77 ng/ml



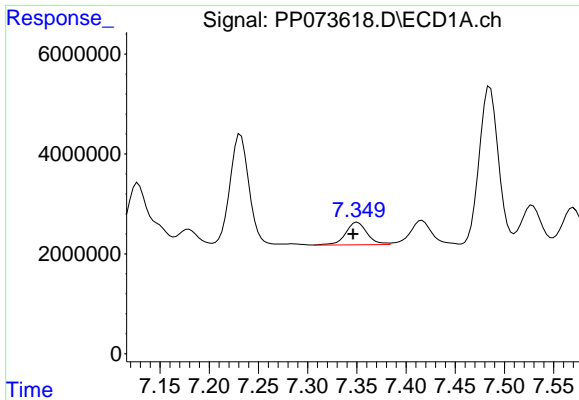
#28 AR-1254-3

R.T.: 7.068 min  
 Delta R.T.: 0.004 min  
 Response: 9400227  
 Conc: 106.42 ng/ml



#28 AR-1254-3

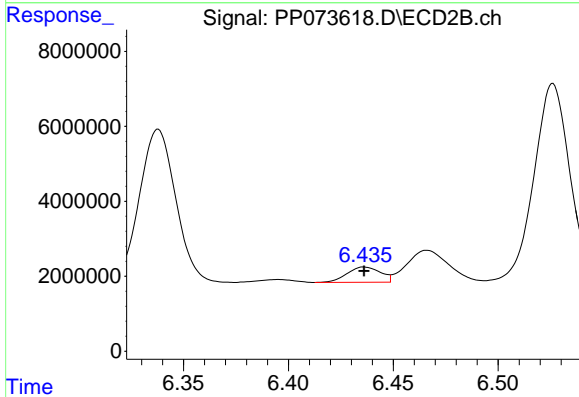
R.T.: 6.222 min  
 Delta R.T.: 0.013 min  
 Response: 38700984  
 Conc: 250.58 ng/ml



#29 AR-1254-4

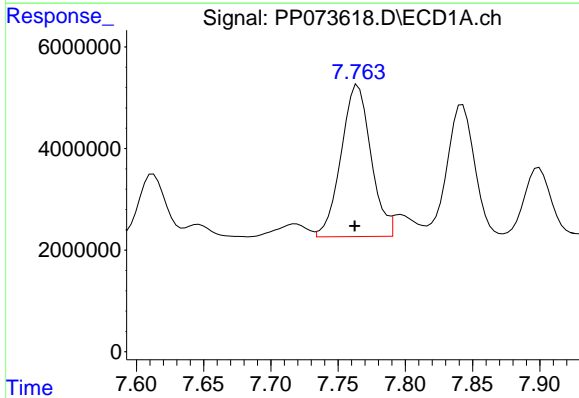
R.T.: 7.351 min  
 Delta R.T.: 0.004 min  
 Response: 6920974  
 Conc: 87.98 ng/ml

Instrument :  
 ECD\_P  
 ClientSampleId :  
 AR1660CCC500



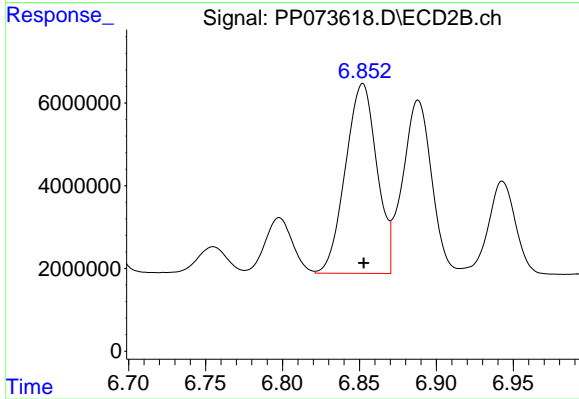
#29 AR-1254-4

R.T.: 6.436 min  
 Delta R.T.: 0.000 min  
 Response: 4479774  
 Conc: 47.38 ng/ml



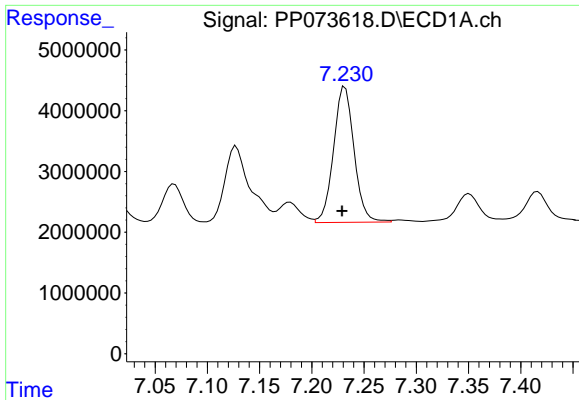
#30 AR-1254-5

R.T.: 7.765 min  
 Delta R.T.: 0.002 min  
 Response: 46051267  
 Conc: 625.02 ng/ml



#30 AR-1254-5

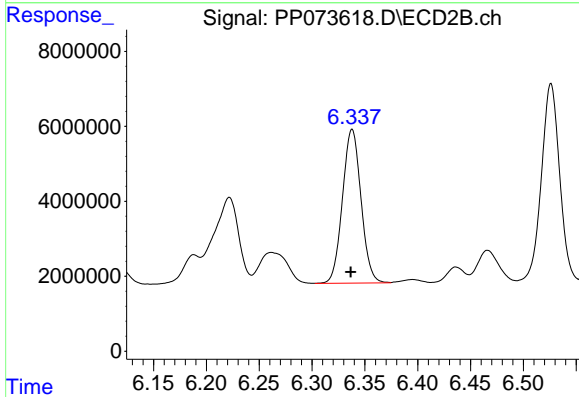
R.T.: 6.852 min  
 Delta R.T.: 0.000 min  
 Response: 65175232  
 Conc: 488.41 ng/ml



#31 AR-1260-1

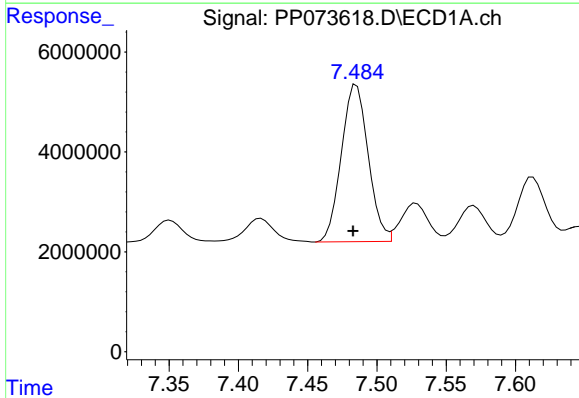
R.T.: 7.232 min  
 Delta R.T.: 0.003 min  
 Response: 30486231  
 Conc: 517.06 ng/ml

Instrument :  
 ECD\_P  
 ClientSampleId :  
 AR1660CCC500



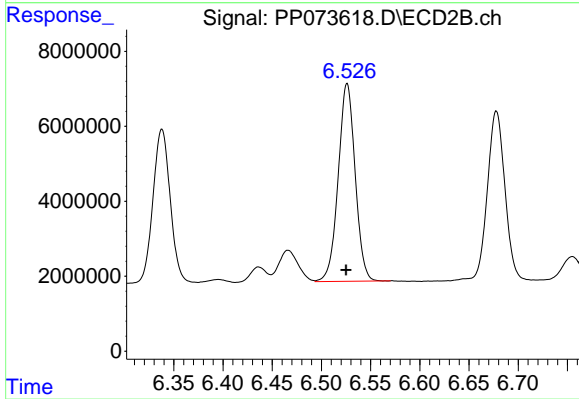
#31 AR-1260-1

R.T.: 6.338 min  
 Delta R.T.: 0.001 min  
 Response: 50051665  
 Conc: 513.03 ng/ml



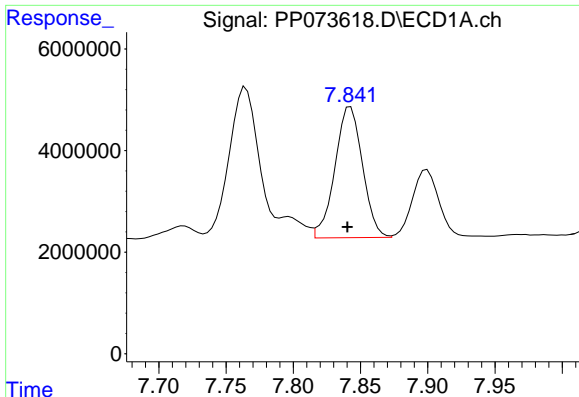
#32 AR-1260-2

R.T.: 7.485 min  
 Delta R.T.: 0.002 min  
 Response: 42457148  
 Conc: 443.00 ng/ml



#32 AR-1260-2

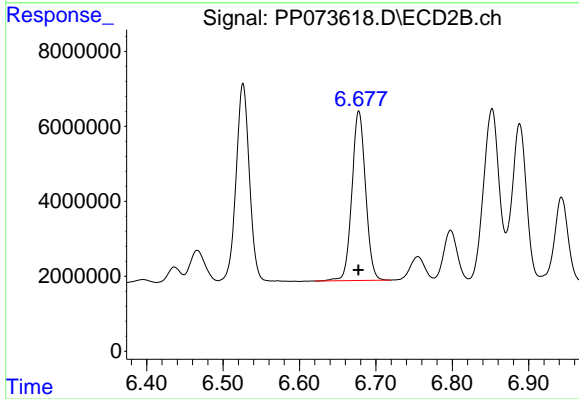
R.T.: 6.526 min  
 Delta R.T.: 0.000 min  
 Response: 63278675  
 Conc: 515.14 ng/ml



#33 AR-1260-3

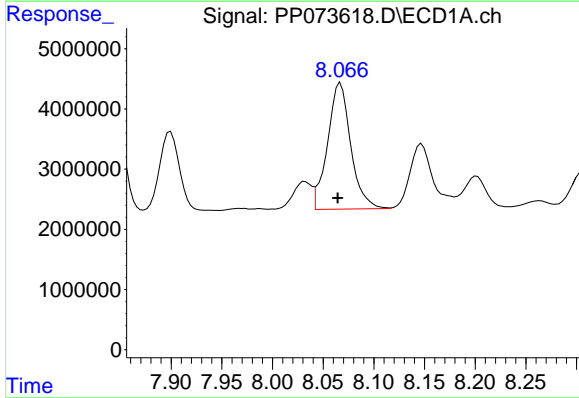
R.T.: 7.843 min  
 Delta R.T.: 0.002 min  
 Response: 36720039  
 Conc: 502.53 ng/ml

Instrument :  
 ECD\_P  
 ClientSampleId :  
 AR1660CCC500



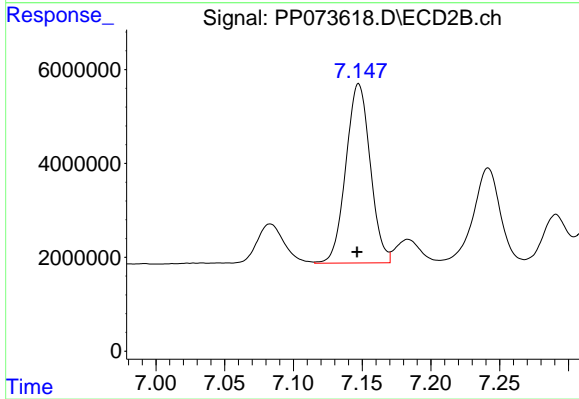
#33 AR-1260-3

R.T.: 6.678 min  
 Delta R.T.: 0.000 min  
 Response: 56141451  
 Conc: 512.88 ng/ml



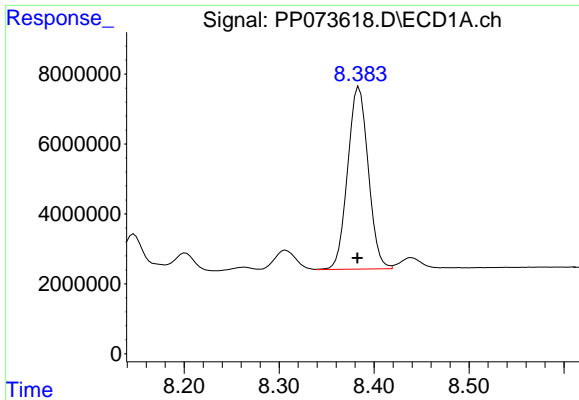
#34 AR-1260-4

R.T.: 8.067 min  
 Delta R.T.: 0.003 min  
 Response: 33430532  
 Conc: 511.95 ng/ml



#34 AR-1260-4

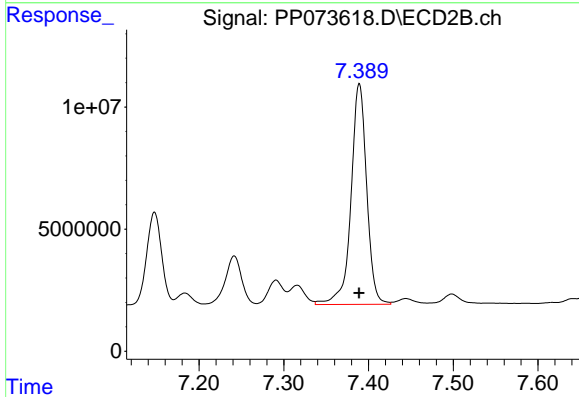
R.T.: 7.147 min  
 Delta R.T.: 0.001 min  
 Response: 47084964  
 Conc: 526.63 ng/ml



#35 AR-1260-5

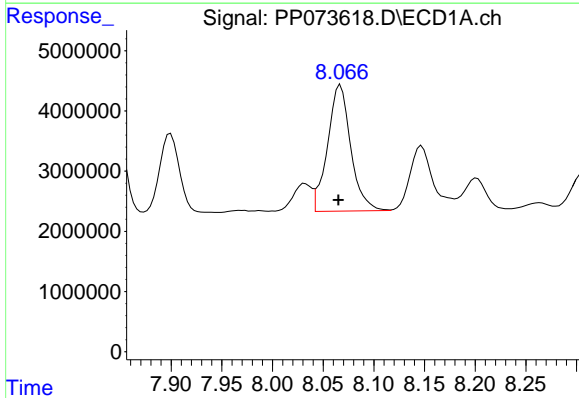
R.T.: 8.384 min  
 Delta R.T.: 0.002 min  
 Response: 78567314  
 Conc: 520.82 ng/ml

Instrument :  
 ECD\_P  
 ClientSampleId :  
 AR1660CCC500



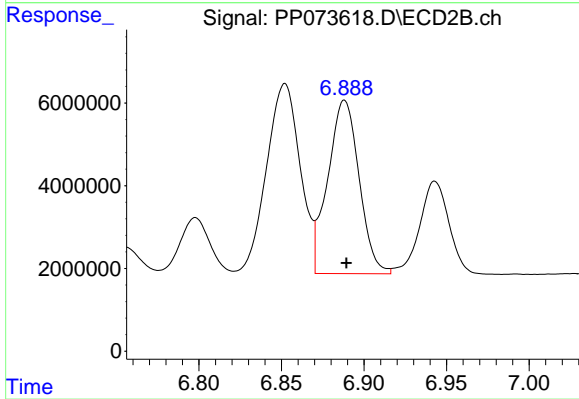
#35 AR-1260-5

R.T.: 7.389 min  
 Delta R.T.: 0.000 min  
 Response: 116275275  
 Conc: 517.38 ng/ml



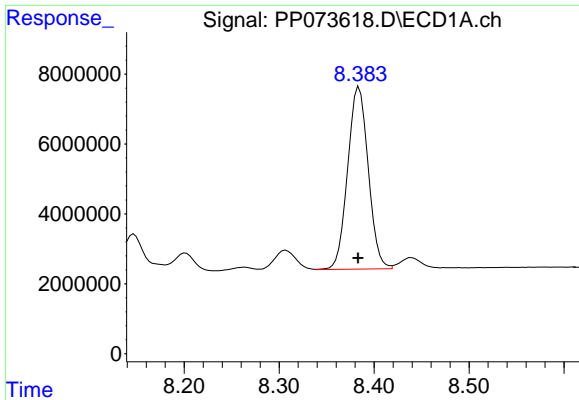
#36 AR-1262-1

R.T.: 8.067 min  
 Delta R.T.: 0.002 min  
 Response: 33430532  
 Conc: 384.14 ng/ml



#36 AR-1262-1

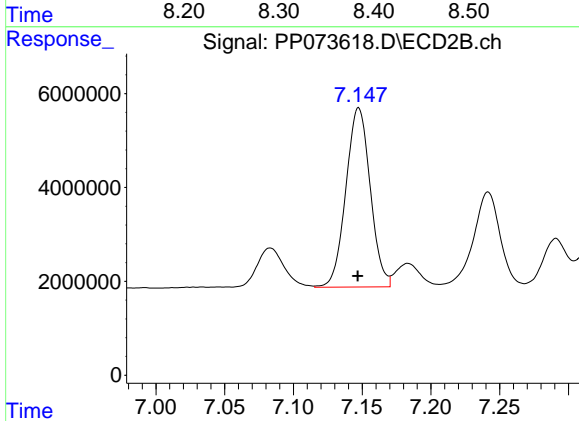
R.T.: 6.888 min  
 Delta R.T.: -0.001 min  
 Response: 55317797  
 Conc: 374.55 ng/ml



#37 AR-1262-2

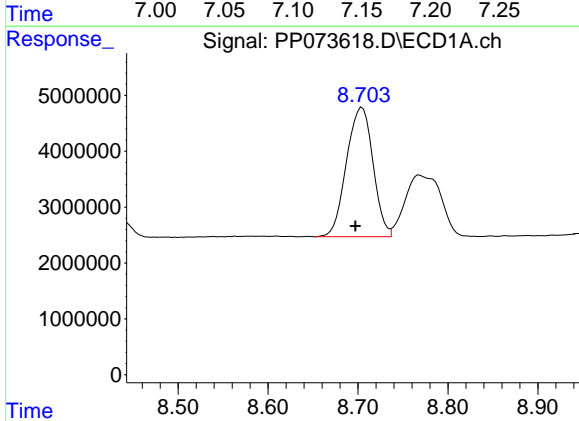
R.T.: 8.384 min  
 Delta R.T.: 0.001 min  
 Response: 78567314  
 Conc: 396.75 ng/ml

Instrument :  
 ECD\_P  
 ClientSampleId :  
 AR1660CCC500



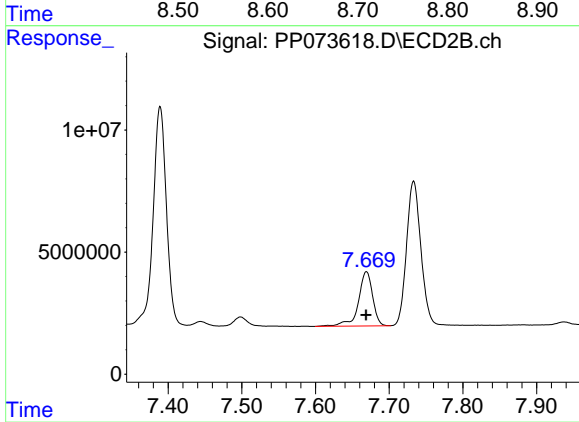
#37 AR-1262-2

R.T.: 7.147 min  
 Delta R.T.: 0.000 min  
 Response: 47084964  
 Conc: 368.34 ng/ml



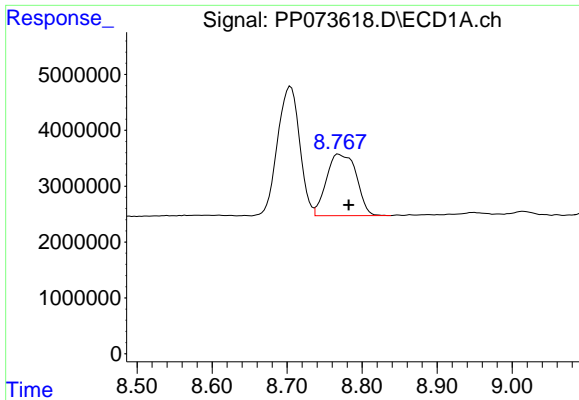
#38 AR-1262-3

R.T.: 8.705 min  
 Delta R.T.: 0.008 min  
 Response: 47349211  
 Conc: 376.61 ng/ml



#38 AR-1262-3

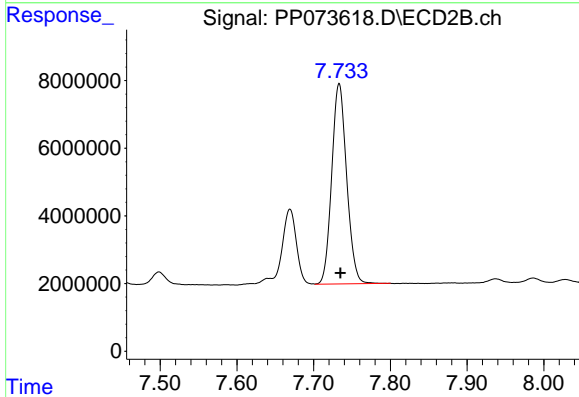
R.T.: 7.669 min  
 Delta R.T.: 0.000 min  
 Response: 29918178  
 Conc: 262.40 ng/ml



#39 AR-1262-4

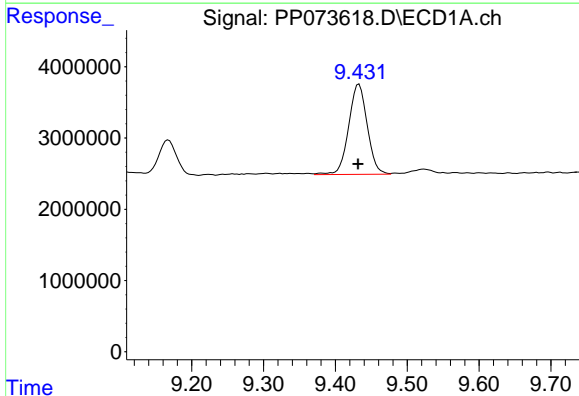
R.T.: 8.769 min  
 Delta R.T.: -0.013 min  
 Response: 30596645  
 Conc: 328.07 ng/ml

Instrument :  
 ECD\_P  
 ClientSampleId :  
 AR1660CCC500



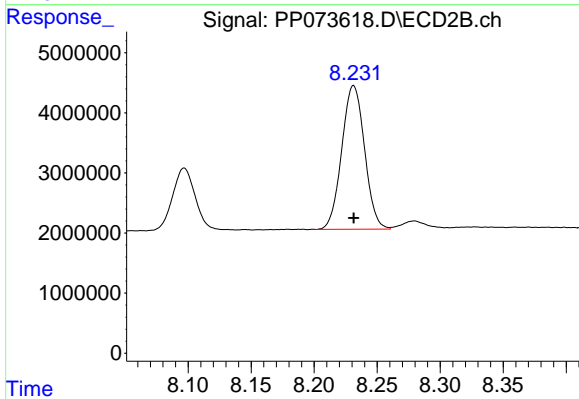
#39 AR-1262-4

R.T.: 7.733 min  
 Delta R.T.: -0.002 min  
 Response: 79930202  
 Conc: 434.29 ng/ml



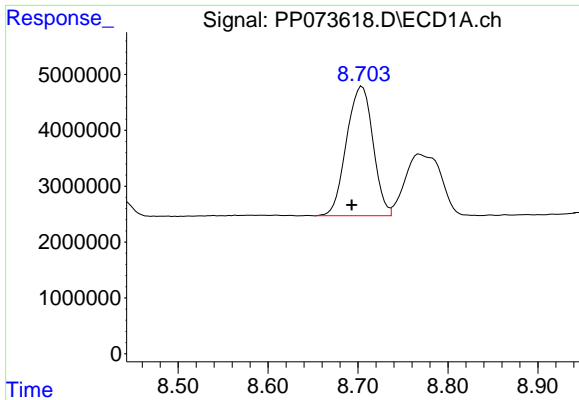
#40 AR-1262-5

R.T.: 9.433 min  
 Delta R.T.: 0.001 min  
 Response: 22680397  
 Conc: 357.79 ng/ml



#40 AR-1262-5

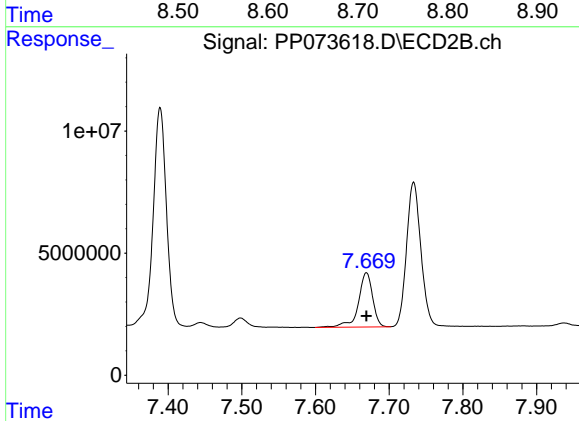
R.T.: 8.231 min  
 Delta R.T.: 0.000 min  
 Response: 30075938  
 Conc: 356.20 ng/ml



#41 AR-1268-1

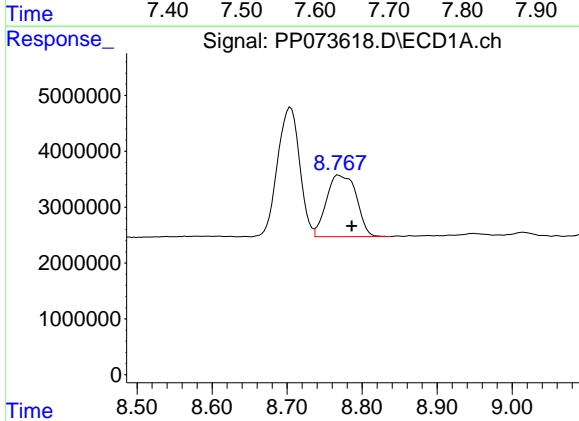
R.T.: 8.705 min  
 Delta R.T.: 0.012 min  
 Response: 47349211  
 Conc: 212.12 ng/ml

Instrument :  
 ECD\_P  
 ClientSampleId :  
 AR1660CCC500



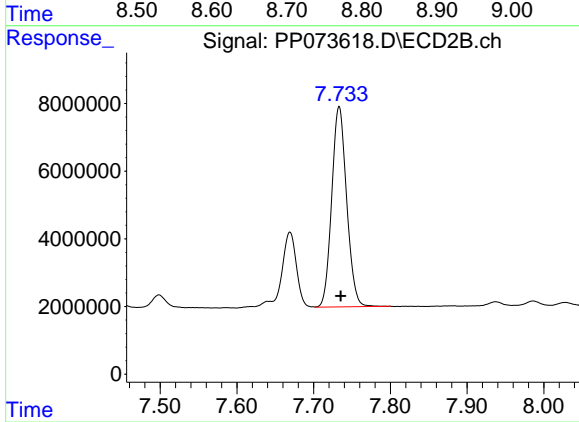
#41 AR-1268-1

R.T.: 7.669 min  
 Delta R.T.: 0.000 min  
 Response: 29918178  
 Conc: 97.33 ng/ml



#42 AR-1268-2

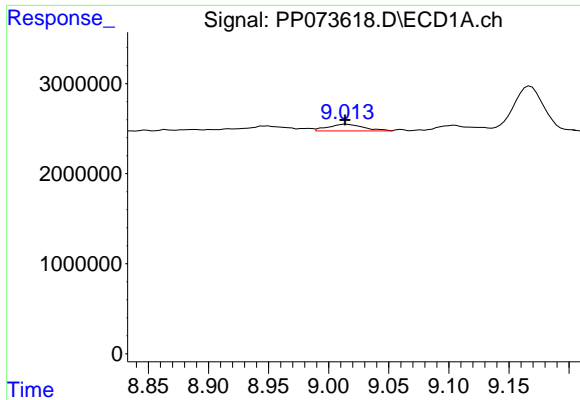
R.T.: 8.769 min  
 Delta R.T.: -0.017 min  
 Response: 30596645  
 Conc: 160.61 ng/ml



#42 AR-1268-2

R.T.: 7.733 min  
 Delta R.T.: -0.002 min  
 Response: 79930202  
 Conc: 300.84 ng/ml

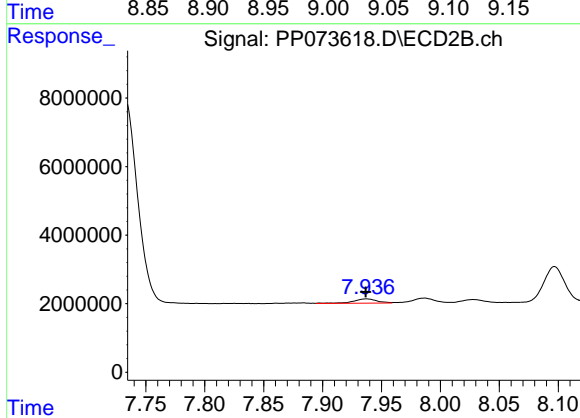




#43 AR-1268-3

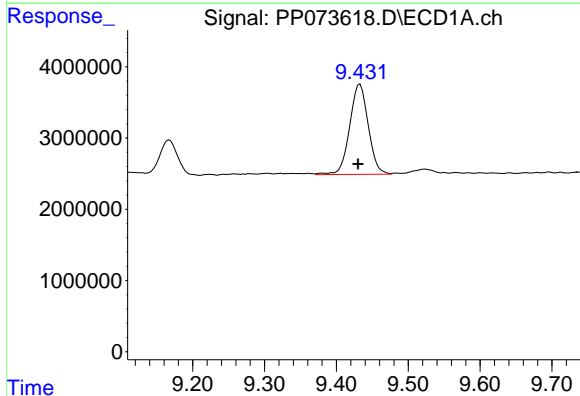
R.T.: 9.015 min  
 Delta R.T.: 0.000 min  
 Response: 1551311  
 Conc: 9.37 ng/ml

Instrument :  
 ECD\_P  
 ClientSampleId :  
 AR1660CCC500



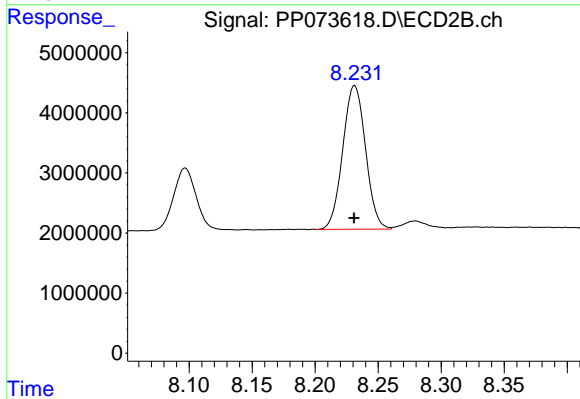
#43 AR-1268-3

R.T.: 7.937 min  
 Delta R.T.: 0.000 min  
 Response: 1723351  
 Conc: 7.64 ng/ml



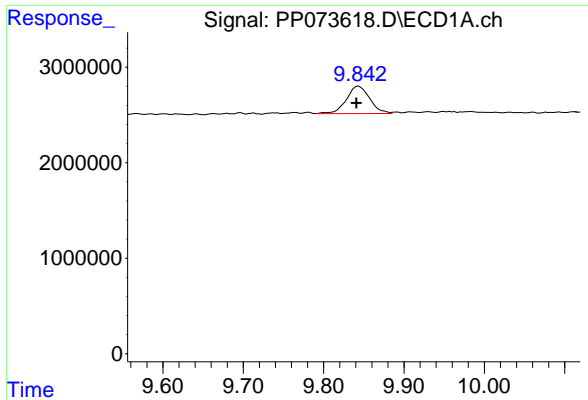
#44 AR-1268-4

R.T.: 9.433 min  
 Delta R.T.: 0.003 min  
 Response: 22680397  
 Conc: 326.13 ng/ml



#44 AR-1268-4

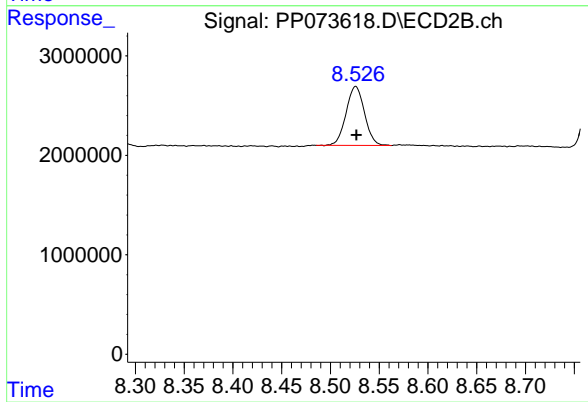
R.T.: 8.231 min  
 Delta R.T.: 0.000 min  
 Response: 30075938  
 Conc: 323.51 ng/ml



#45 AR-1268-5

R.T.: 9.844 min  
Delta R.T.: 0.003 min  
Response: 5768304  
Conc: 12.51 ng/ml

Instrument :  
ECD\_P  
ClientSampleId :  
AR1660CCC500



#45 AR-1268-5

R.T.: 8.526 min  
Delta R.T.: 0.000 min  
Response: 7801234  
Conc: 12.65 ng/ml