

Data Path : Z:\pestpcbsrv\HPCHEM1\ECD_P\Data\PP070925\
 Data File : PP073619.D
 Signal(s) : Signal #1: ECD1A.ch Signal #2: ECD2B.ch
 Acq On : 08 Jul 2025 19:34
 Operator : YP\AJ
 Sample : AR1242CCC500
 Misc :
 ALS Vial : 4 Sample Multiplier: 1

Instrument :
 ECD_P
 ClientSampleId :
 AR1242CCC500

Integration File signal 1: autoint1.e
 Integration File signal 2: autoint2.e
 Quant Time: Jul 09 01:44:04 2025
 Quant Method : Z:\pestpcbsrv\HPCHEM1\ECD_P\methods\PP070825.M
 Quant Title : GC EXTRACTABLES
 QLast Update : Tue Jul 08 08:35:32 2025
 Response via : Initial Calibration
 Integrator: ChemStation

Volume Inj. : 2 µl
 Signal #1 Phase : ZB-MR2 Signal #2 Phase: ZB-MR2
 Signal #1 Info : 30Mx0.32mmx 0.50µ Signal #2 Info : 30M x 0.32mm x 0.25µm

Compound	RT#1	RT#2	Resp#1	Resp#2	ng/ml	ng/ml

System Monitoring Compounds						
1) SA Tetrachlo...	4.488	3.780	72976466	96669976	53.286	52.473
2) SA Decachlor...	10.175	8.780	60728080	75653050	55.660	57.177
Target Compounds						
3) L1 AR-1016-1	5.639	4.858	20520740	31345702	431.892	459.785
4) L1 AR-1016-2	5.660	4.876	31400513	45510126	440.926	446.684
5) L1 AR-1016-3	5.722	5.052	19117473	24556864	437.841	453.863
6) L1 AR-1016-4	5.820	5.094	15966826	18485458	444.194	421.265
7) L1 AR-1016-5	6.112	5.307	14204406	24815328	453.374	454.639
8) L2 AR-1221-1	4.686	3.988	2324907	3742134	130.127	138.367
9) L2 AR-1221-2	4.776	4.076	3648229	5419355	270.150	266.172
10) L2 AR-1221-3	4.851	4.150	12434781	18109197	298.878	294.705
11) L3 AR-1232-1	4.851	4.150	12434781	18109197	380.843	388.490
12) L3 AR-1232-2	5.374	4.876	15715052	45510126	966.802	954.895
13) L3 AR-1232-3	5.660	5.052	31400513	24556864	951.719	981.135
14) L3 AR-1232-4	5.820	5.136	15966826	23507825	970.914	1085.496
15) L3 AR-1232-5	5.909	5.307	11773079	24815328	1113.782	1099.802
16) L4 AR-1242-1	5.639	4.858	20520740	31345702	537.358	542.644
17) L4 AR-1242-2	5.660	4.876	31400513	45510126	524.373	526.407
18) L4 AR-1242-3	5.722	5.052	19117473	24556864	522.037	534.465
19) L4 AR-1242-4	5.820	5.136	15966826	23507825	496.851	531.091
20) L4 AR-1242-5	6.549	5.657	16884244	30173064	515.756	546.193
21) L5 AR-1248-1	5.639	4.858	20520740	31345702	664.736	698.202
22) L5 AR-1248-2	5.909	5.094	11773079	18485458	294.892	300.398
23) L5 AR-1248-3	6.112	5.136	14204406	23507825	319.850	366.940
24) L5 AR-1248-4	6.511	5.307	16031732	24815328	291.060	329.214
25) L5 AR-1248-5	6.549	5.698	16884244	26063929	313.888	349.425
26) L6 AR-1254-1	6.484	5.657	10905936	30173064	203.509	260.045 #
27) L6 AR-1254-2	6.705	5.805	14344205	8646362	172.222	85.928 #
28) L6 AR-1254-3	7.065	6.207	7894767	10160103	89.376	65.784 #
29) L6 AR-1254-4	7.346	6.437	7017119	6381285	89.200	67.485
30) L6 AR-1254-5	7.763	6.851	1858381	2495888	25.222	18.704 #
31) L7 AR-1260-1	7.228	6.326	813593	2716262	13.799	27.842 #
32) L7 AR-1260-2	7.486	6.511	1672898	2655958	17.455	21.622
33) L7 AR-1260-3	7.829	6.676	400481	1116468	5.481	10.199 #
34) L7 AR-1260-4	8.053	7.147	928044	563083	14.212	6.298 #
35) L7 AR-1260-5	8.390	7.389	755270	720994	5.007	3.208 #
36) L8 AR-1262-1	8.053	6.922	928044	155063	10.664	1.050 #
37) L8 AR-1262-2	8.390	7.147	755270	563083	3.814	4.405
38) L8 AR-1262-3	8.701	7.678	201719	154356	1.604	1.354
39) L8 AR-1262-4	8.759	7.735	192463	222664	2.064	1.210 #
40) L8 AR-1262-5	9.444	8.227	262772	82202	4.145	0.974 #
41) L9 AR-1268-1	8.701	7.678	201719	154356	0.904	0.502 #

Data Path : Z:\pestpcbsrv\HPCHEM1\ECD_P\Data\PP070925\
 Data File : PP073619.D
 Signal(s) : Signal #1: ECD1A.ch Signal #2: ECD2B.ch
 Acq On : 08 Jul 2025 19:34
 Operator : YP\AJ
 Sample : AR1242CCC500
 Misc :
 ALS Vial : 4 Sample Multiplier: 1

Instrument :
 ECD_P
 ClientSampleId :
 AR1242CCC500

Integration File signal 1: autoint1.e
 Integration File signal 2: autoint2.e
 Quant Time: Jul 09 01:44:04 2025
 Quant Method : Z:\pestpcbsrv\HPCHEM1\ECD_P\methods\PP070825.M
 Quant Title : GC EXTRACTABLES
 QLast Update : Tue Jul 08 08:35:32 2025
 Response via : Initial Calibration
 Integrator: ChemStation

Volume Inj. : 2 µl
 Signal #1 Phase : ZB-MR1 Signal #2 Phase: ZB-MR2
 Signal #1 Info : 30Mx0.32mmx 0.50µ Signal #2 Info : 30M x 0.32mm x 0.25µm

	Compound	RT#1	RT#2	Resp#1	Resp#2	ng/ml	ng/ml
42)	L9 AR-1268-2	8.759	7.735	192463	222664	1.010	0.838
43)	L9 AR-1268-3	9.004	7.948	387154	423415	2.338	1.877
44)	L9 AR-1268-4	9.444	8.227	262772	82202	3.779	0.884 #
45)	L9 AR-1268-5	9.844	8.526	246345	506776	0.534	0.822 #

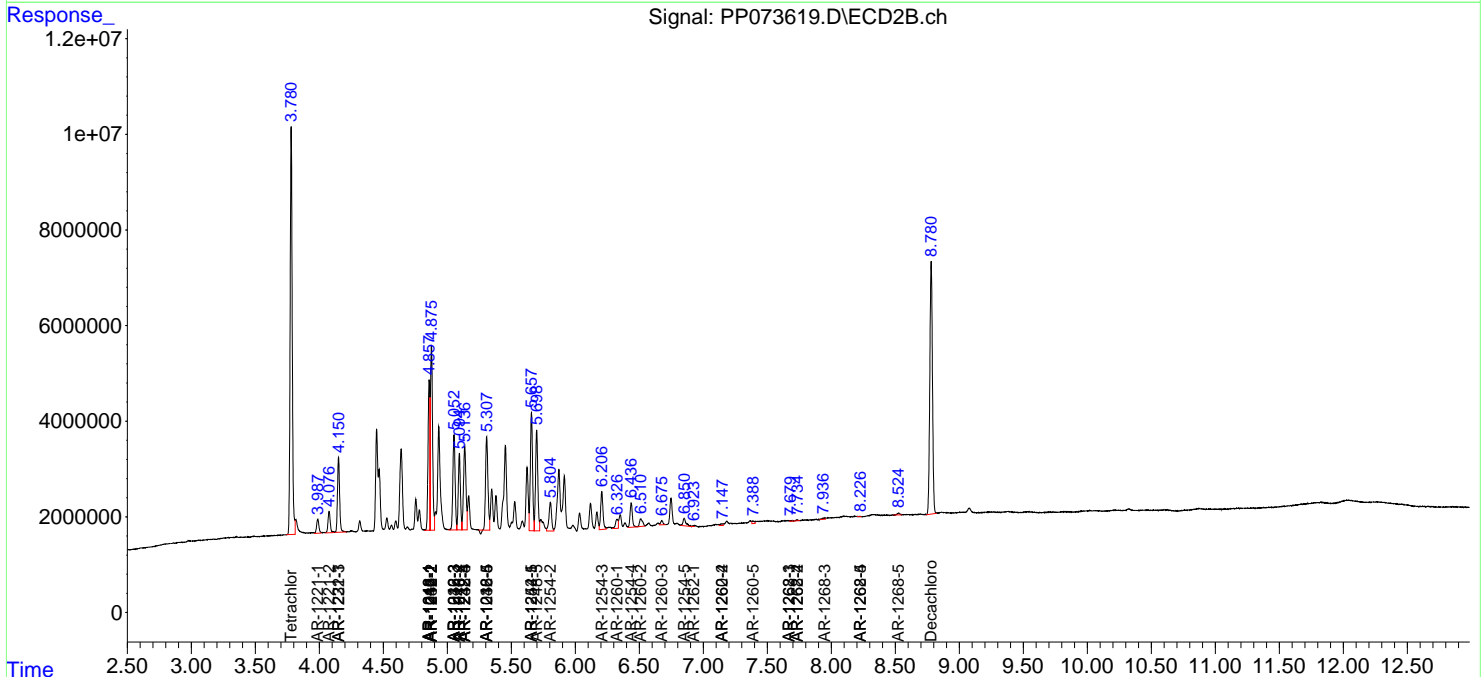
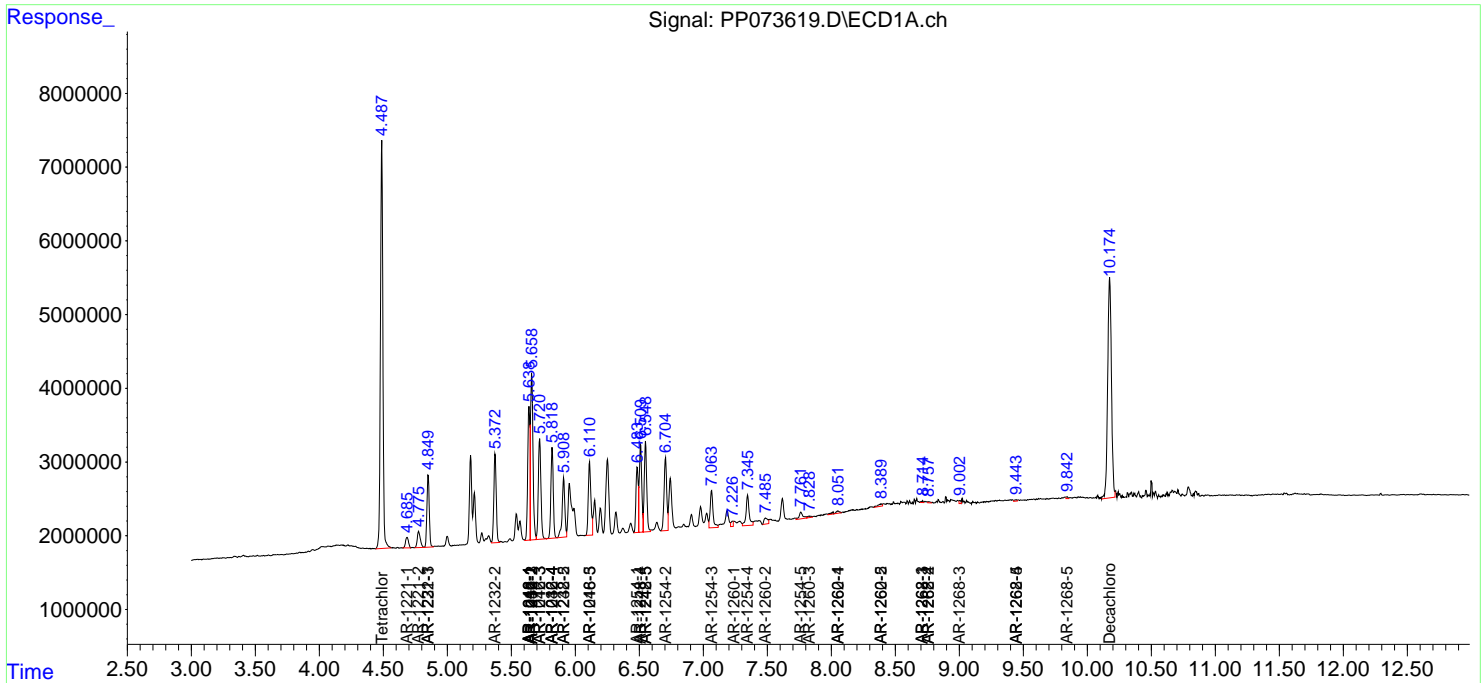
(f)=RT Delta > 1/2 Window (#)=Amounts differ by > 25% (m)=manual int.

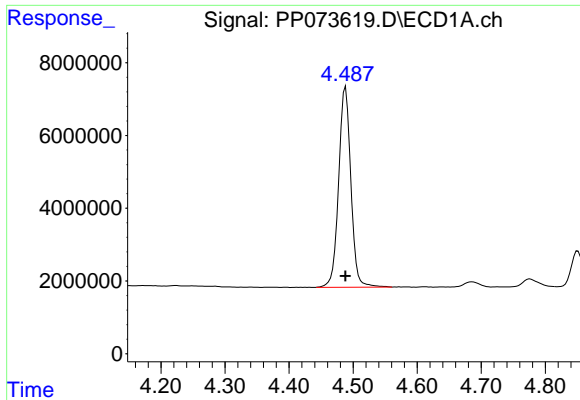
Data Path : Z:\pestpcbsrv\HPCHEM1\ECD_P\Data\PP070925\
 Data File : PP073619.D
 Signal(s) : Signal #1: ECD1A.ch Signal #2: ECD2B.ch
 Acq On : 08 Jul 2025 19:34
 Operator : YP\AJ
 Sample : AR1242CCC500
 Misc :
 ALS Vial : 4 Sample Multiplier: 1

Instrument :
 ECD_P
 ClientSampleId :
 AR1242CCC500

Integration File signal 1: autoint1.e
 Integration File signal 2: autoint2.e
 Quant Time: Jul 09 01:44:04 2025
 Quant Method : Z:\pestpcbsrv\HPCHEM1\ECD_P\methods\PP070825.M
 Quant Title : GC EXTRACTABLES
 QLast Update : Tue Jul 08 08:35:32 2025
 Response via : Initial Calibration
 Integrator: ChemStation

Volume Inj. : 2 µl
 Signal #1 Phase : ZB-MR1 Signal #2 Phase: ZB-MR2
 Signal #1 Info : 30Mx0.32mmx 0.50µ Signal #2 Info : 30M x 0.32mm x 0.25µm

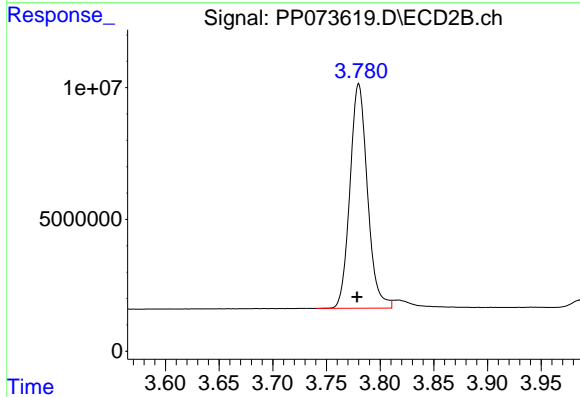




#1 Tetrachloro-m-xylene

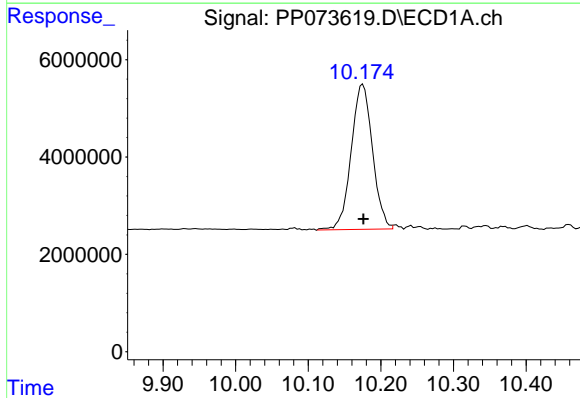
R.T.: 4.488 min
 Delta R.T.: 0.000 min
 Response: 72976466
 Conc: 53.29 ng/ml

Instrument :
 ECD_P
 ClientSampleId :
 AR1242CCC500



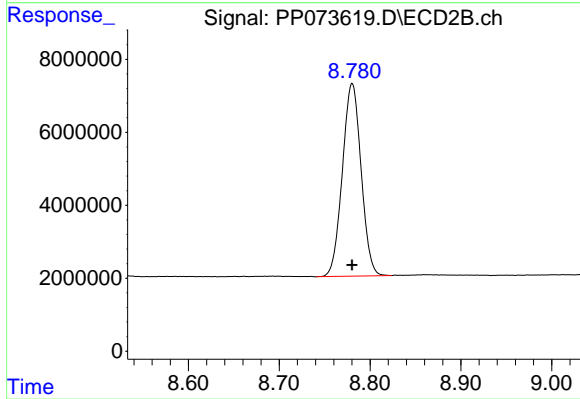
#1 Tetrachloro-m-xylene

R.T.: 3.780 min
 Delta R.T.: 0.002 min
 Response: 96669976
 Conc: 52.47 ng/ml



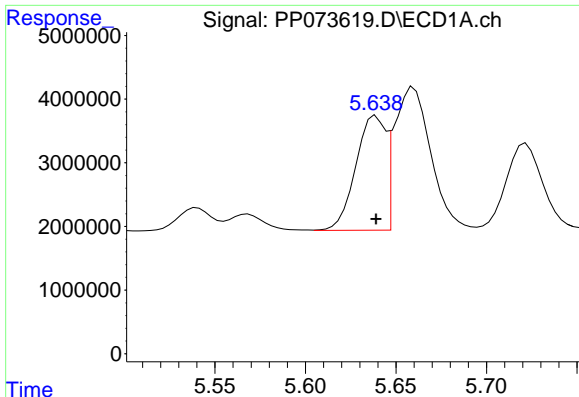
#2 Decachlorobiphenyl

R.T.: 10.175 min
 Delta R.T.: 0.000 min
 Response: 60728080
 Conc: 55.66 ng/ml



#2 Decachlorobiphenyl

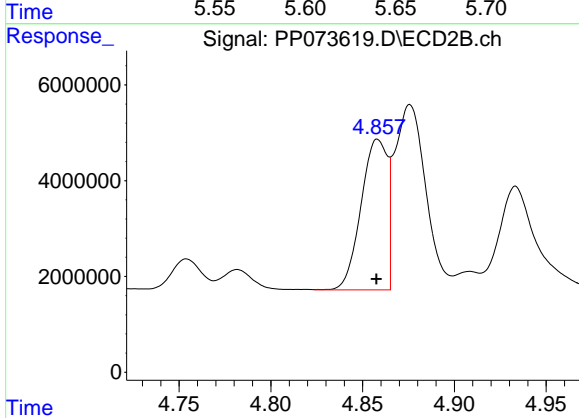
R.T.: 8.780 min
 Delta R.T.: 0.000 min
 Response: 75653050
 Conc: 57.18 ng/ml



#3 AR-1016-1

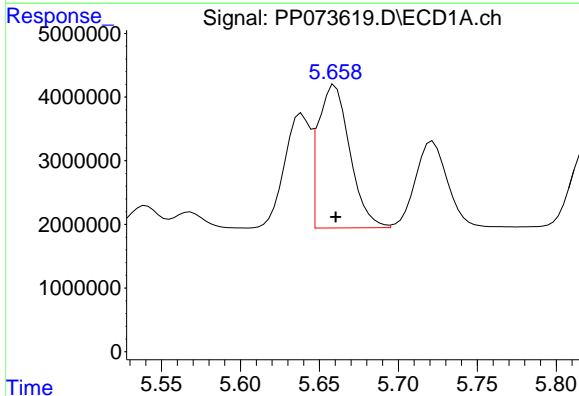
R.T.: 5.639 min
 Delta R.T.: 0.000 min
 Response: 20520740
 Conc: 431.89 ng/ml

Instrument :
 ECD_P
 ClientSampleId :
 AR1242CCC500



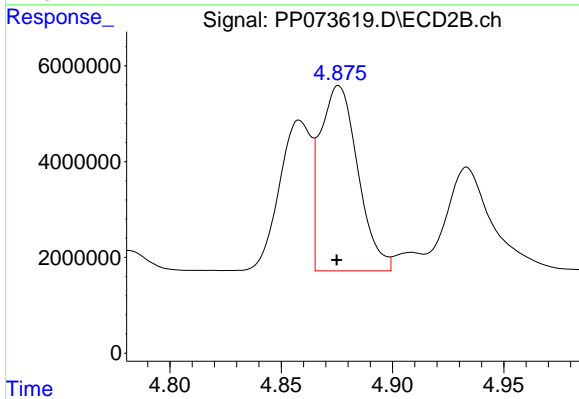
#3 AR-1016-1

R.T.: 4.858 min
 Delta R.T.: 0.000 min
 Response: 31345702
 Conc: 459.78 ng/ml



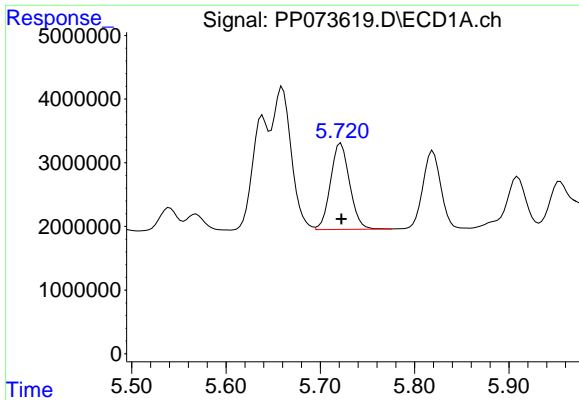
#4 AR-1016-2

R.T.: 5.660 min
 Delta R.T.: 0.000 min
 Response: 31400513
 Conc: 440.93 ng/ml



#4 AR-1016-2

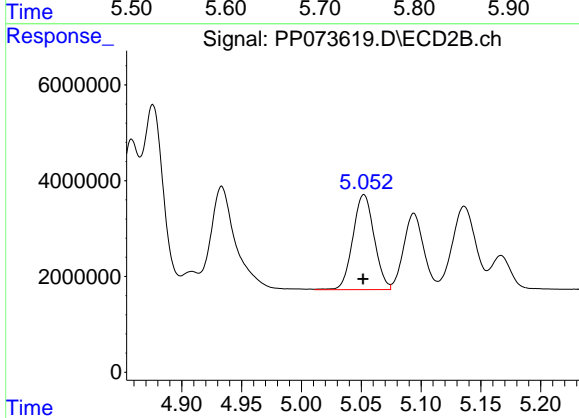
R.T.: 4.876 min
 Delta R.T.: 0.000 min
 Response: 45510126
 Conc: 446.68 ng/ml



#5 AR-1016-3

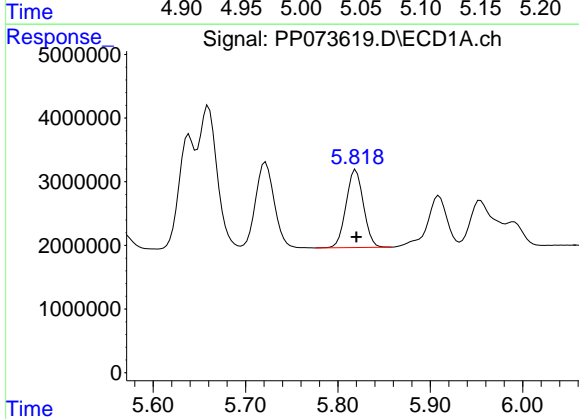
R.T.: 5.722 min
 Delta R.T.: 0.000 min
 Response: 19117473
 Conc: 437.84 ng/ml

Instrument :
 ECD_P
 ClientSampleId :
 AR1242CCC500



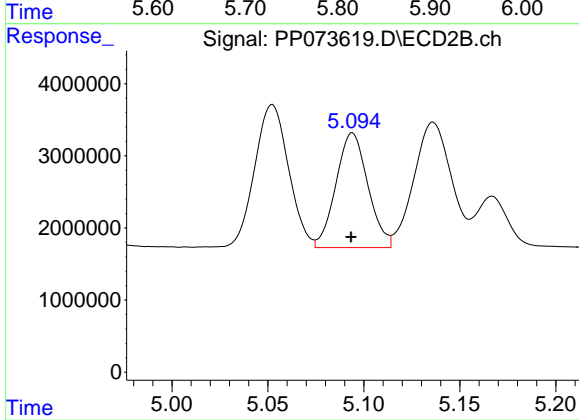
#5 AR-1016-3

R.T.: 5.052 min
 Delta R.T.: 0.000 min
 Response: 24556864
 Conc: 453.86 ng/ml



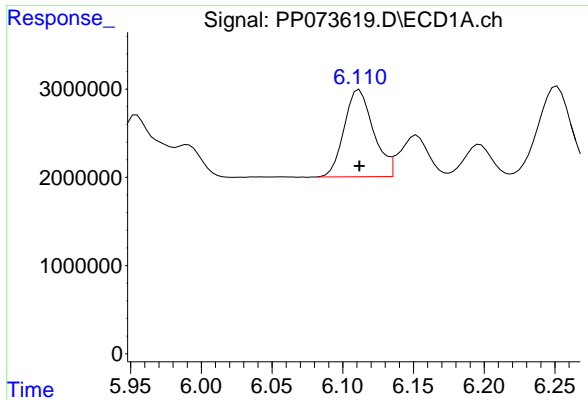
#6 AR-1016-4

R.T.: 5.820 min
 Delta R.T.: 0.000 min
 Response: 15966826
 Conc: 444.19 ng/ml



#6 AR-1016-4

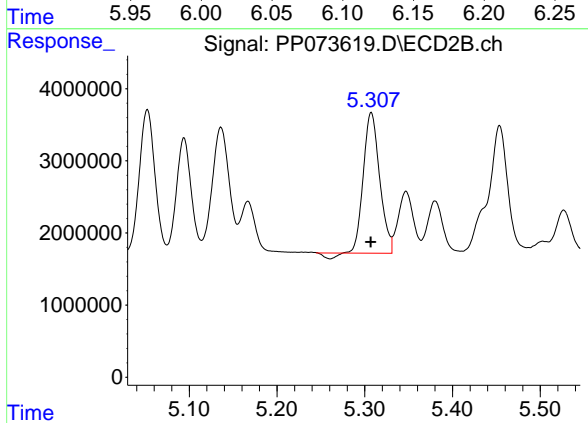
R.T.: 5.094 min
 Delta R.T.: 0.000 min
 Response: 18485458
 Conc: 421.26 ng/ml



#7 AR-1016-5

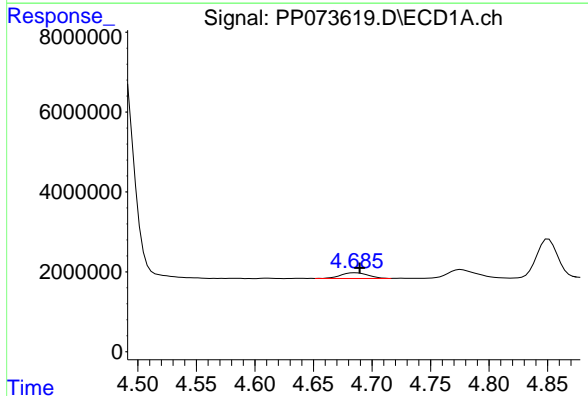
R.T.: 6.112 min
 Delta R.T.: 0.000 min
 Response: 14204406
 Conc: 453.37 ng/ml

Instrument :
 ECD_P
 ClientSampleId :
 AR1242CCC500



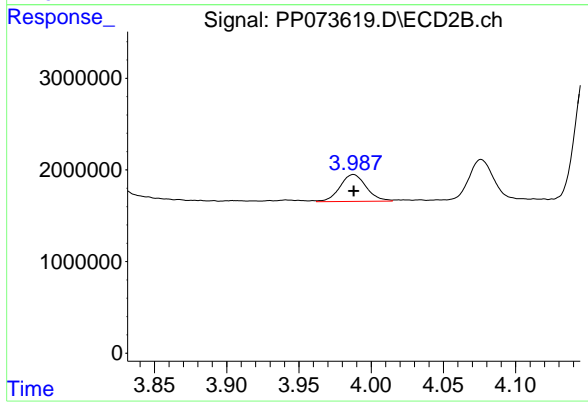
#7 AR-1016-5

R.T.: 5.307 min
 Delta R.T.: 0.000 min
 Response: 24815328
 Conc: 454.64 ng/ml



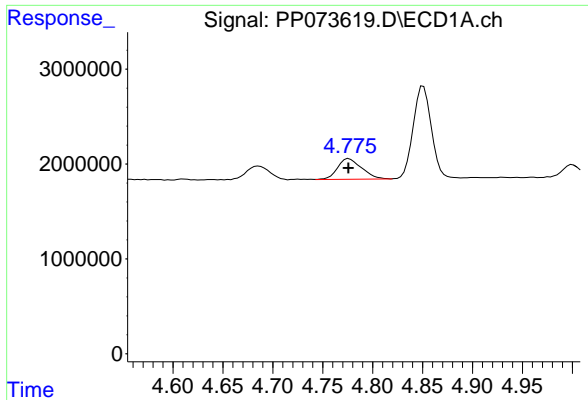
#8 AR-1221-1

R.T.: 4.686 min
 Delta R.T.: -0.004 min
 Response: 2324907
 Conc: 130.13 ng/ml



#8 AR-1221-1

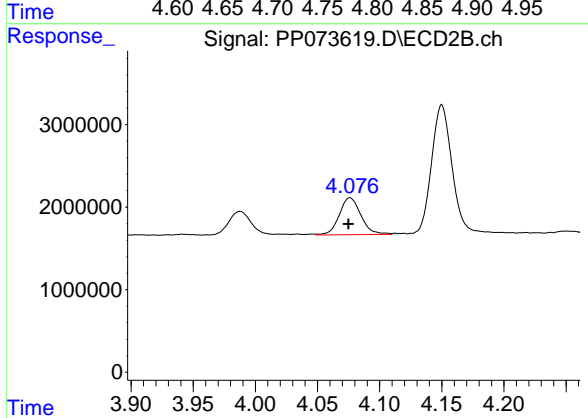
R.T.: 3.988 min
 Delta R.T.: 0.000 min
 Response: 3742134
 Conc: 138.37 ng/ml



#9 AR-1221-2

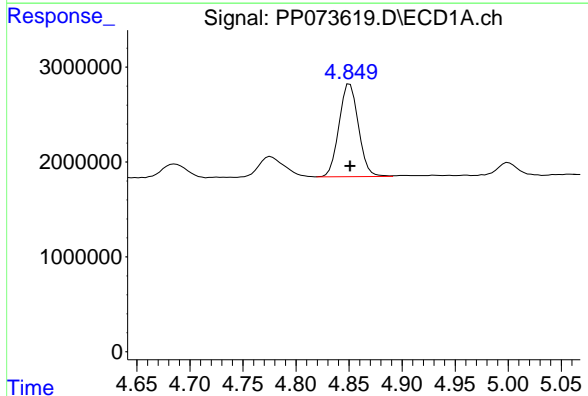
R.T.: 4.776 min
 Delta R.T.: 0.000 min
 Response: 3648229
 Conc: 270.15 ng/ml

Instrument :
 ECD_P
 ClientSampleId :
 AR1242CCC500



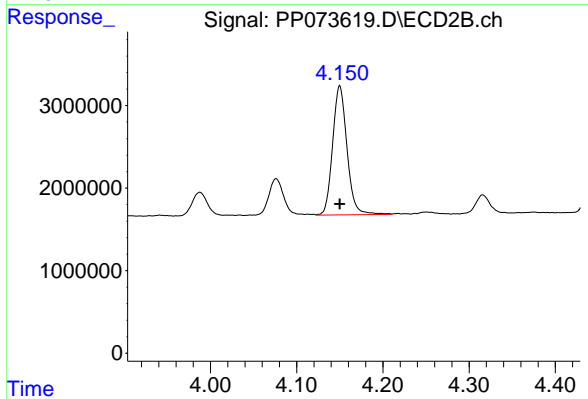
#9 AR-1221-2

R.T.: 4.076 min
 Delta R.T.: 0.001 min
 Response: 5419355
 Conc: 266.17 ng/ml



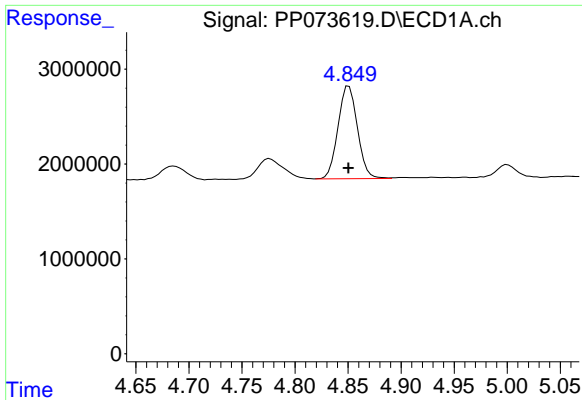
#10 AR-1221-3

R.T.: 4.851 min
 Delta R.T.: 0.000 min
 Response: 12434781
 Conc: 298.88 ng/ml



#10 AR-1221-3

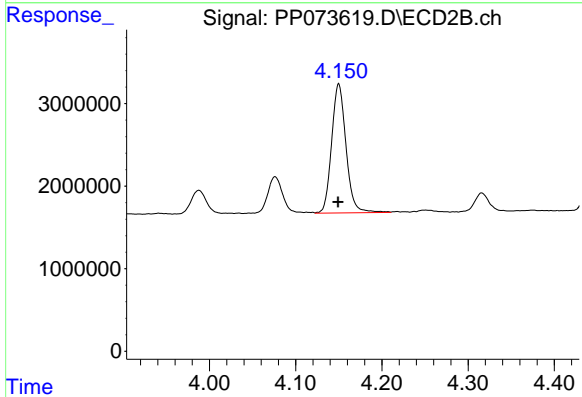
R.T.: 4.150 min
 Delta R.T.: 0.000 min
 Response: 18109197
 Conc: 294.70 ng/ml



#11 AR-1232-1

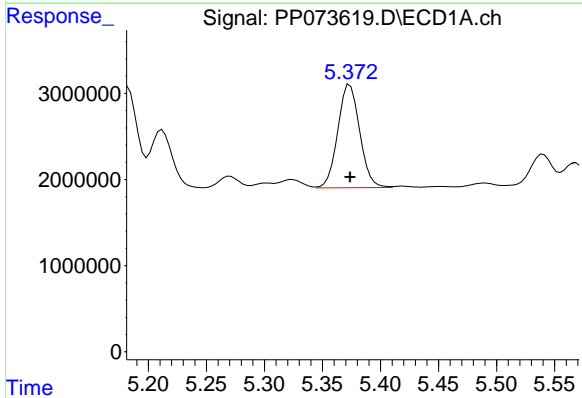
R.T.: 4.851 min
 Delta R.T.: 0.000 min
 Response: 12434781
 Conc: 380.84 ng/ml

Instrument :
 ECD_P
 ClientSampleId :
 AR1242CCC500



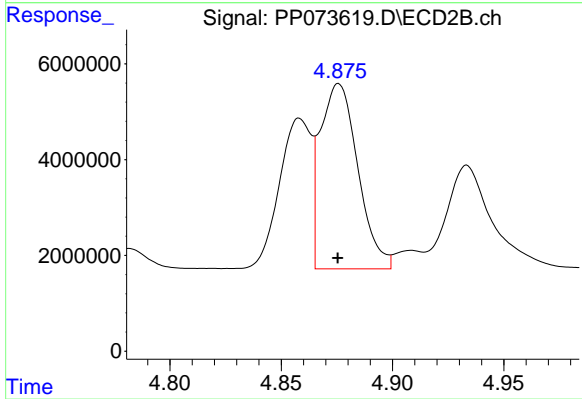
#11 AR-1232-1

R.T.: 4.150 min
 Delta R.T.: 0.000 min
 Response: 18109197
 Conc: 388.49 ng/ml



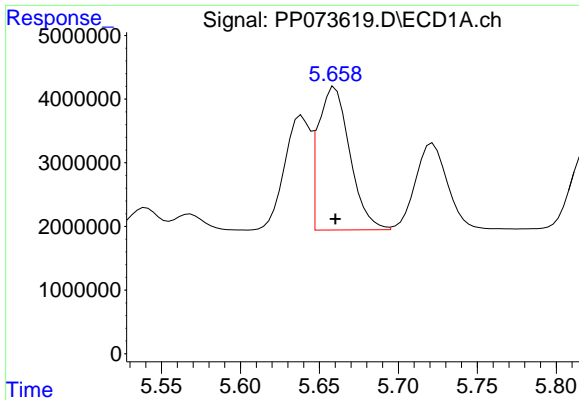
#12 AR-1232-2

R.T.: 5.374 min
 Delta R.T.: 0.000 min
 Response: 15715052
 Conc: 966.80 ng/ml



#12 AR-1232-2

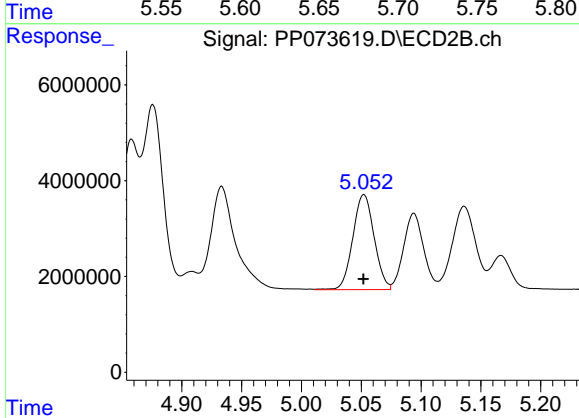
R.T.: 4.876 min
 Delta R.T.: 0.000 min
 Response: 45510126
 Conc: 954.90 ng/ml



#13 AR-1232-3

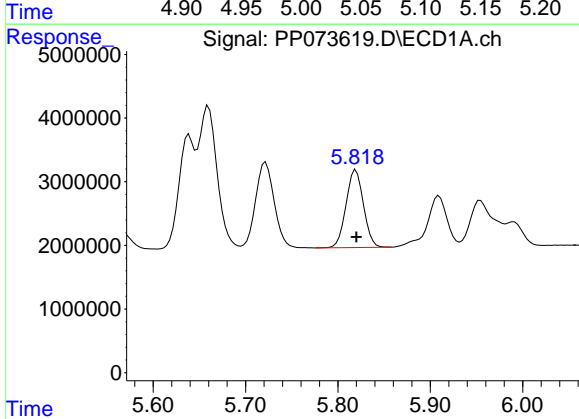
R.T.: 5.660 min
 Delta R.T.: 0.000 min
 Response: 31400513
 Conc: 951.72 ng/ml

Instrument :
 ECD_P
 ClientSampleId :
 AR1242CCC500



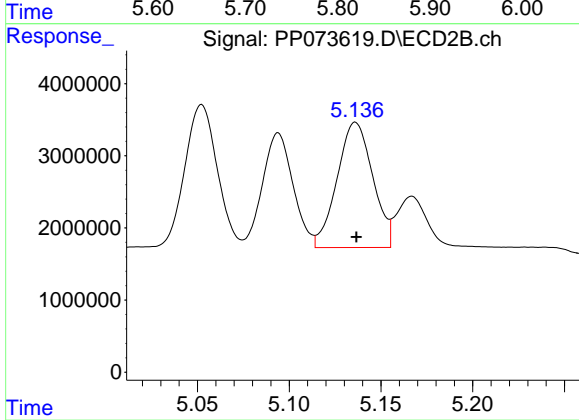
#13 AR-1232-3

R.T.: 5.052 min
 Delta R.T.: 0.000 min
 Response: 24556864
 Conc: 981.14 ng/ml



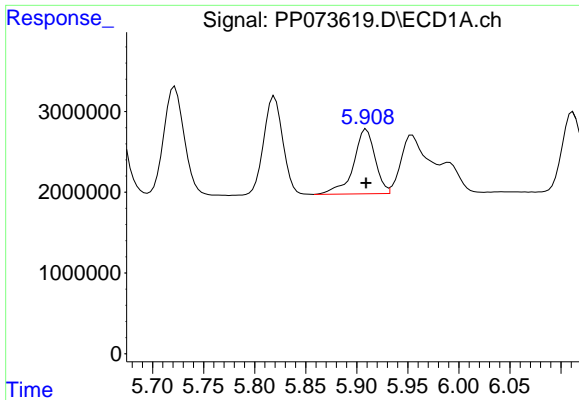
#14 AR-1232-4

R.T.: 5.820 min
 Delta R.T.: 0.000 min
 Response: 15966826
 Conc: 970.91 ng/ml



#14 AR-1232-4

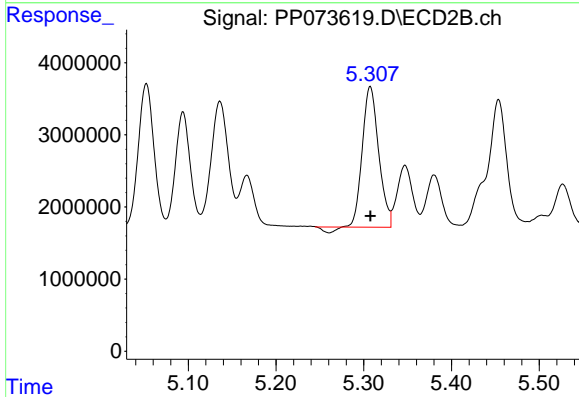
R.T.: 5.136 min
 Delta R.T.: 0.000 min
 Response: 23507825
 Conc: 1085.50 ng/ml



#15 AR-1232-5

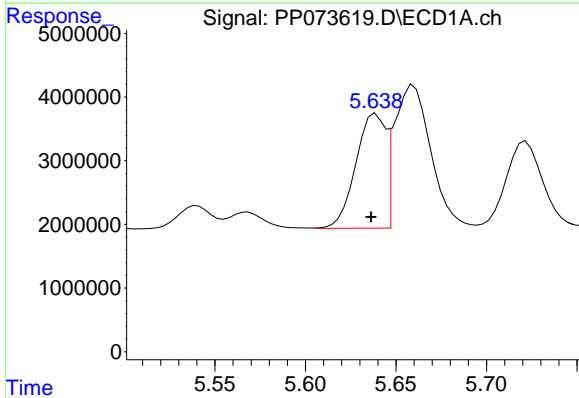
R.T.: 5.909 min
 Delta R.T.: 0.000 min
 Response: 11773079
 Conc: 1113.78 ng/ml

Instrument :
 ECD_P
 ClientSampleId :
 AR1242CCC500



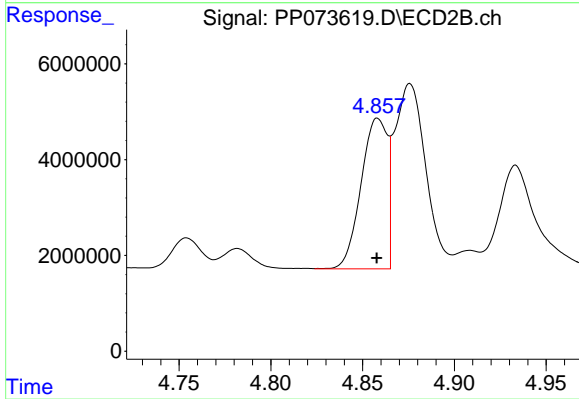
#15 AR-1232-5

R.T.: 5.307 min
 Delta R.T.: 0.000 min
 Response: 24815328
 Conc: 1099.80 ng/ml



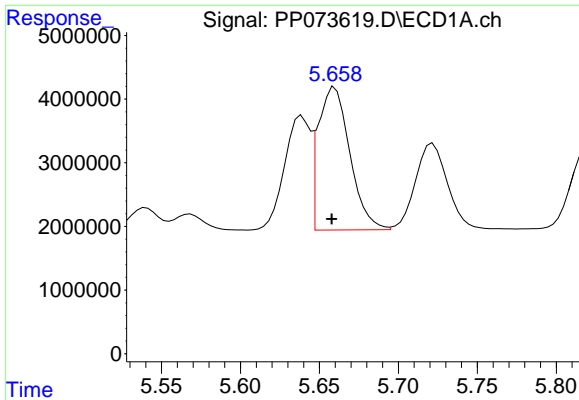
#16 AR-1242-1

R.T.: 5.639 min
 Delta R.T.: 0.003 min
 Response: 20520740
 Conc: 537.36 ng/ml



#16 AR-1242-1

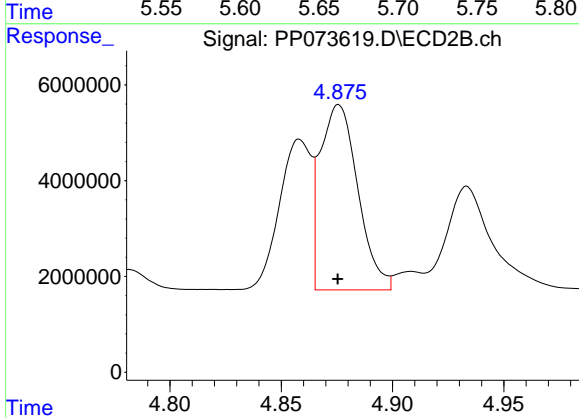
R.T.: 4.858 min
 Delta R.T.: 0.000 min
 Response: 31345702
 Conc: 542.64 ng/ml



#17 AR-1242-2

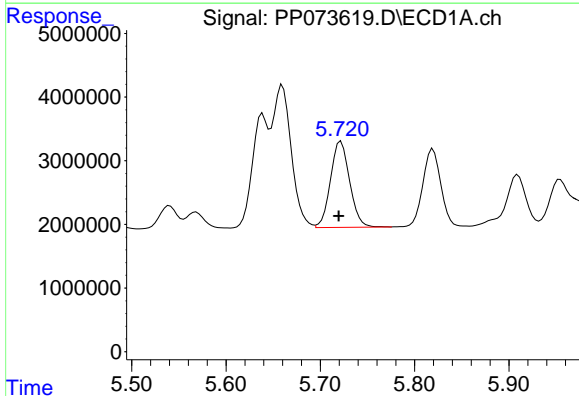
R.T.: 5.660 min
 Delta R.T.: 0.002 min
 Response: 31400513
 Conc: 524.37 ng/ml

Instrument :
 ECD_P
 ClientSampleId :
 AR1242CCC500



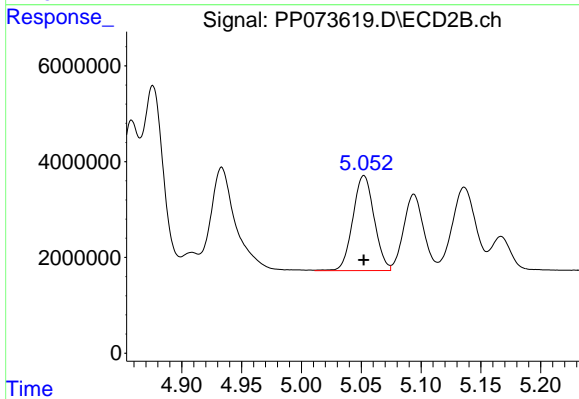
#17 AR-1242-2

R.T.: 4.876 min
 Delta R.T.: 0.000 min
 Response: 45510126
 Conc: 526.41 ng/ml



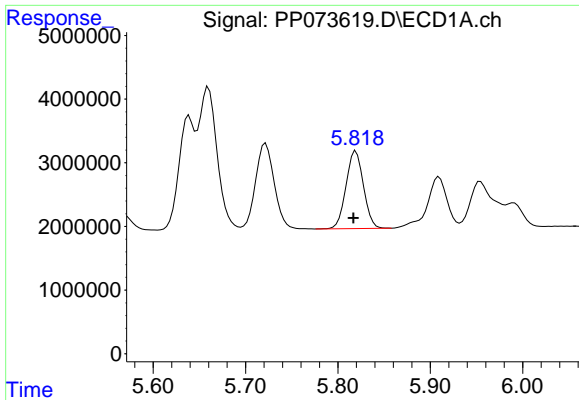
#18 AR-1242-3

R.T.: 5.722 min
 Delta R.T.: 0.002 min
 Response: 19117473
 Conc: 522.04 ng/ml



#18 AR-1242-3

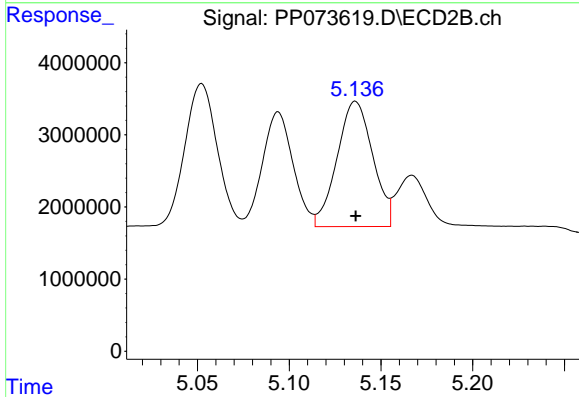
R.T.: 5.052 min
 Delta R.T.: 0.000 min
 Response: 24556864
 Conc: 534.46 ng/ml



#19 AR-1242-4

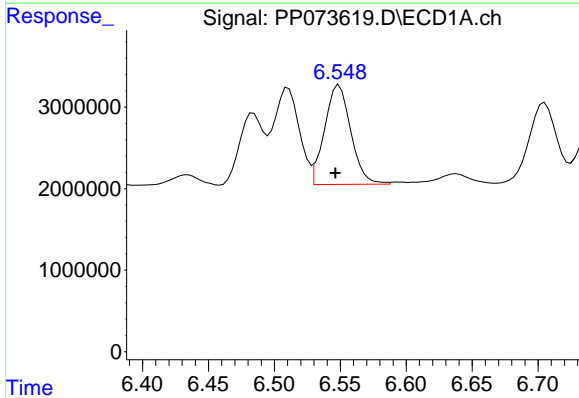
R.T.: 5.820 min
 Delta R.T.: 0.003 min
 Response: 15966826
 Conc: 496.85 ng/ml

Instrument :
 ECD_P
 ClientSampleId :
 AR1242CCC500



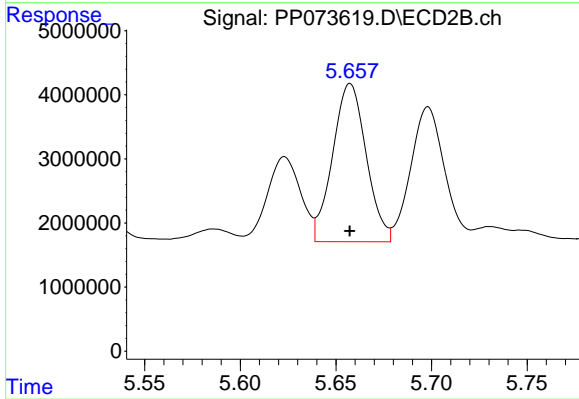
#19 AR-1242-4

R.T.: 5.136 min
 Delta R.T.: 0.000 min
 Response: 23507825
 Conc: 531.09 ng/ml



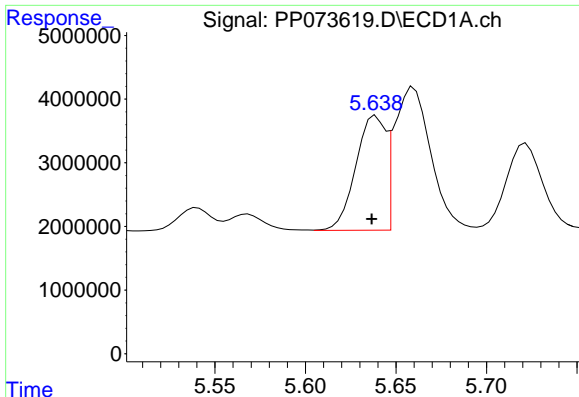
#20 AR-1242-5

R.T.: 6.549 min
 Delta R.T.: 0.003 min
 Response: 16884244
 Conc: 515.76 ng/ml



#20 AR-1242-5

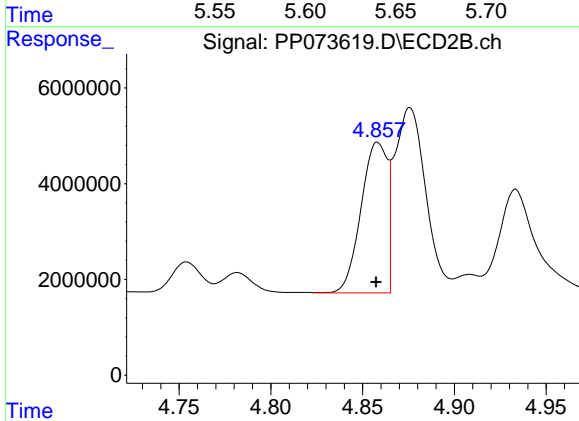
R.T.: 5.657 min
 Delta R.T.: 0.000 min
 Response: 30173064
 Conc: 546.19 ng/ml



#21 AR-1248-1

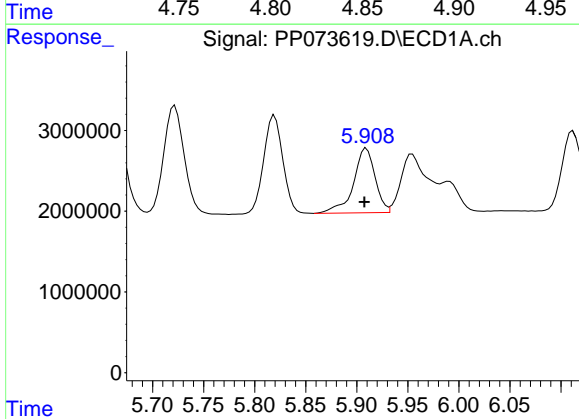
R.T.: 5.639 min
 Delta R.T.: 0.002 min
 Response: 20520740
 Conc: 664.74 ng/ml

Instrument :
 ECD_P
 ClientSampleId :
 AR1242CCC500



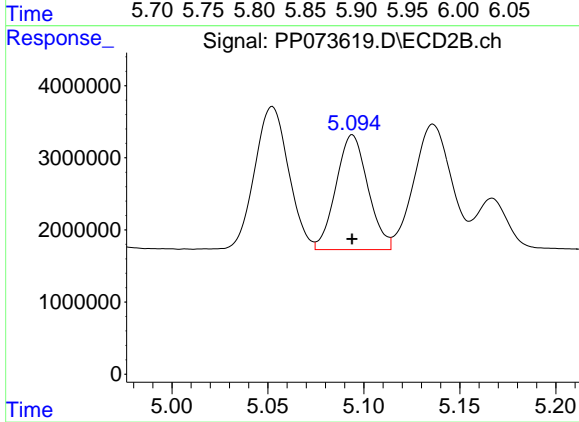
#21 AR-1248-1

R.T.: 4.858 min
 Delta R.T.: 0.000 min
 Response: 31345702
 Conc: 698.20 ng/ml



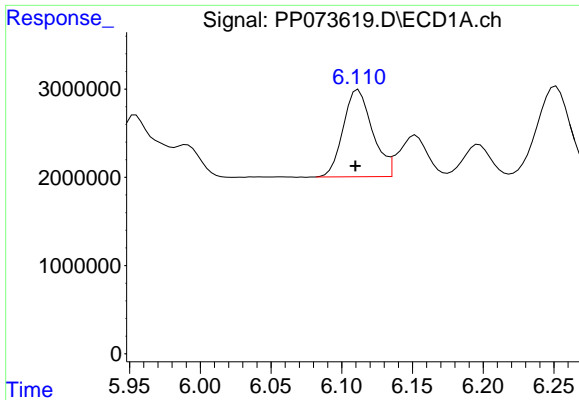
#22 AR-1248-2

R.T.: 5.909 min
 Delta R.T.: 0.002 min
 Response: 11773079
 Conc: 294.89 ng/ml



#22 AR-1248-2

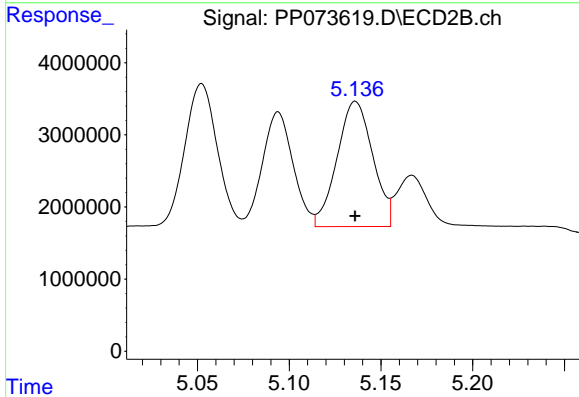
R.T.: 5.094 min
 Delta R.T.: 0.000 min
 Response: 18485458
 Conc: 300.40 ng/ml



#23 AR-1248-3

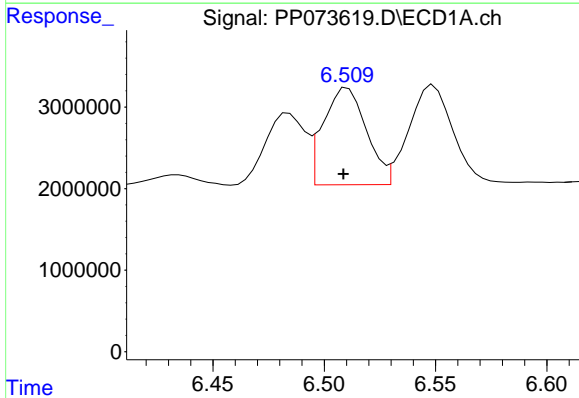
R.T.: 6.112 min
 Delta R.T.: 0.002 min
 Response: 14204406
 Conc: 319.85 ng/ml

Instrument :
 ECD_P
 ClientSampleId :
 AR1242CCC500



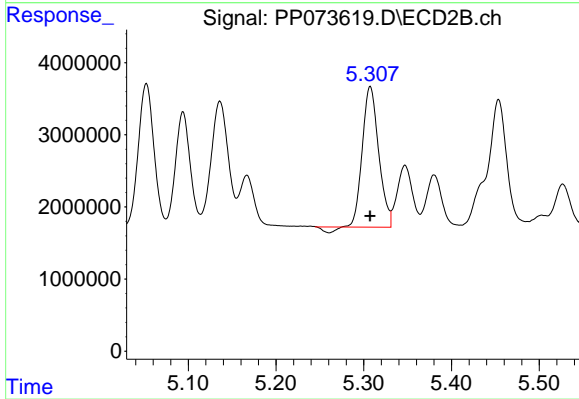
#23 AR-1248-3

R.T.: 5.136 min
 Delta R.T.: 0.000 min
 Response: 23507825
 Conc: 366.94 ng/ml



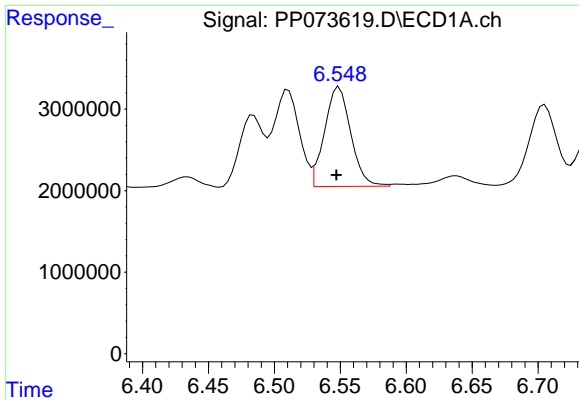
#24 AR-1248-4

R.T.: 6.511 min
 Delta R.T.: 0.002 min
 Response: 16031732
 Conc: 291.06 ng/ml



#24 AR-1248-4

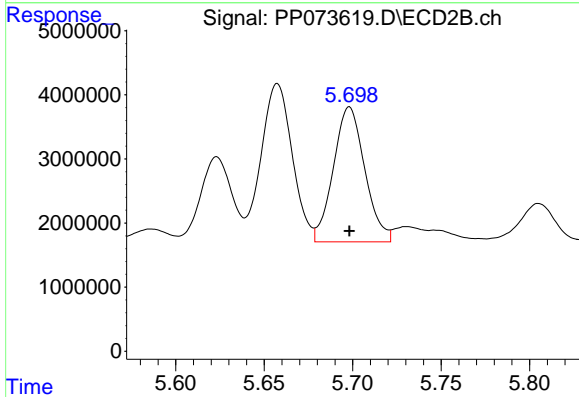
R.T.: 5.307 min
 Delta R.T.: 0.000 min
 Response: 24815328
 Conc: 329.21 ng/ml



#25 AR-1248-5

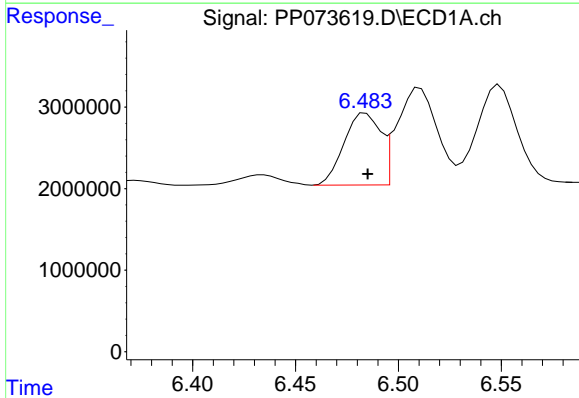
R.T.: 6.549 min
 Delta R.T.: 0.002 min
 Response: 16884244
 Conc: 313.89 ng/ml

Instrument :
 ECD_P
 ClientSampleId :
 AR1242CCC500



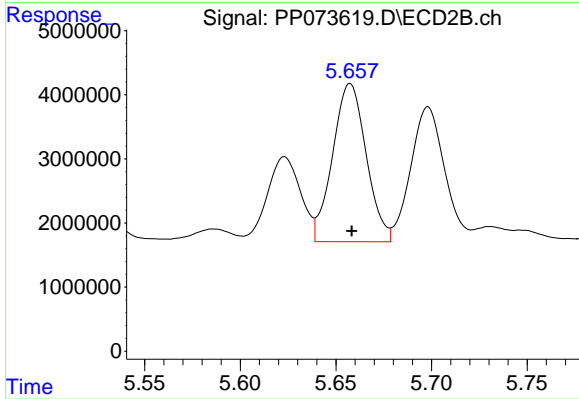
#25 AR-1248-5

R.T.: 5.698 min
 Delta R.T.: 0.000 min
 Response: 26063929
 Conc: 349.43 ng/ml



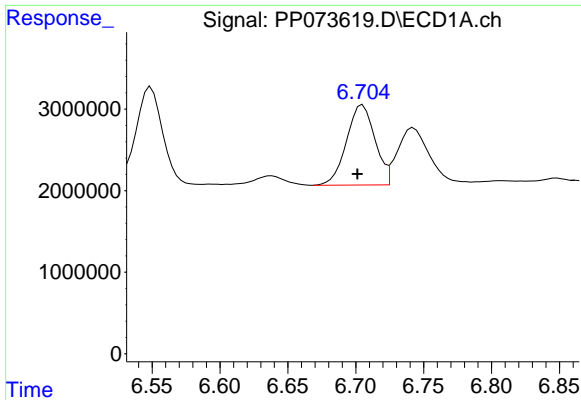
#26 AR-1254-1

R.T.: 6.484 min
 Delta R.T.: 0.000 min
 Response: 10905936
 Conc: 203.51 ng/ml



#26 AR-1254-1

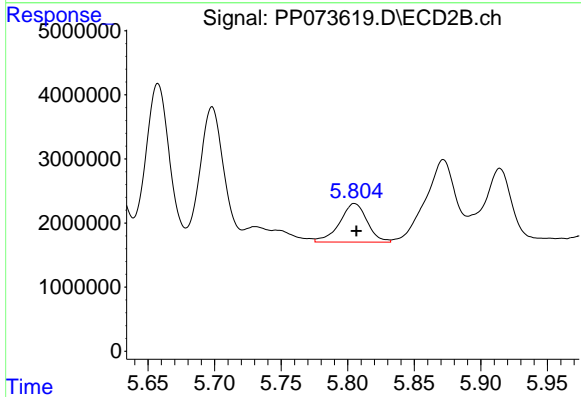
R.T.: 5.657 min
 Delta R.T.: 0.000 min
 Response: 30173064
 Conc: 260.05 ng/ml



#27 AR-1254-2

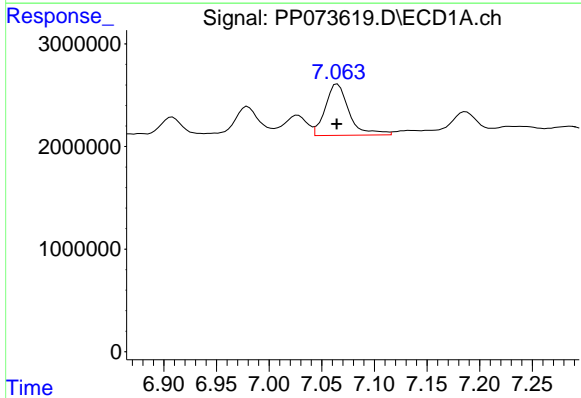
R.T.: 6.705 min
 Delta R.T.: 0.004 min
 Response: 14344205
 Conc: 172.22 ng/ml

Instrument :
 ECD_P
 ClientSampleId :
 AR1242CCC500



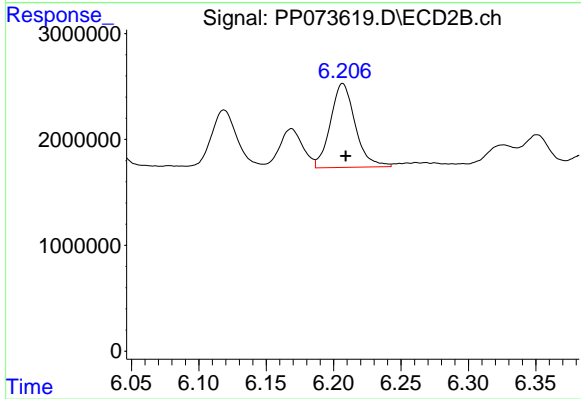
#27 AR-1254-2

R.T.: 5.805 min
 Delta R.T.: -0.002 min
 Response: 8646362
 Conc: 85.93 ng/ml



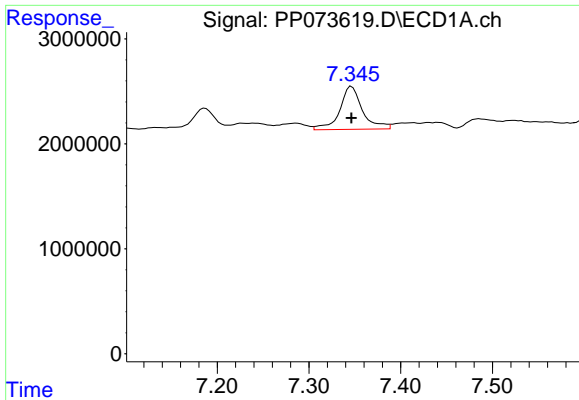
#28 AR-1254-3

R.T.: 7.065 min
 Delta R.T.: 0.000 min
 Response: 7894767
 Conc: 89.38 ng/ml



#28 AR-1254-3

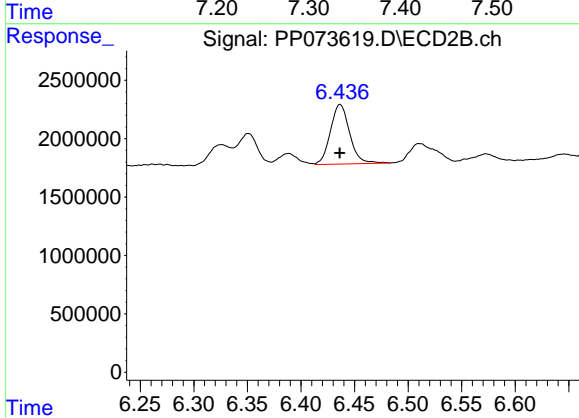
R.T.: 6.207 min
 Delta R.T.: -0.002 min
 Response: 10160103
 Conc: 65.78 ng/ml



#29 AR-1254-4

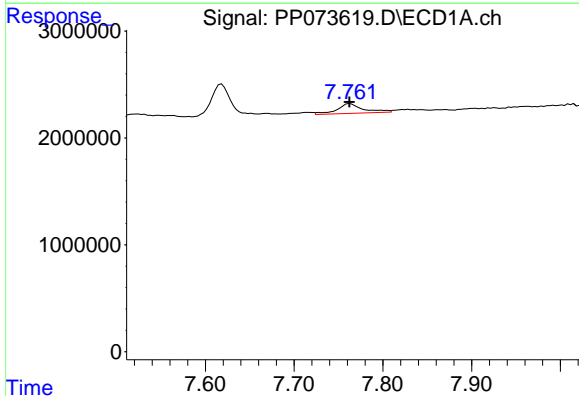
R.T.: 7.346 min
Delta R.T.: 0.000 min
Response: 7017119
Conc: 89.20 ng/ml

Instrument :
ECD_P
ClientSampleId :
AR1242CCC500



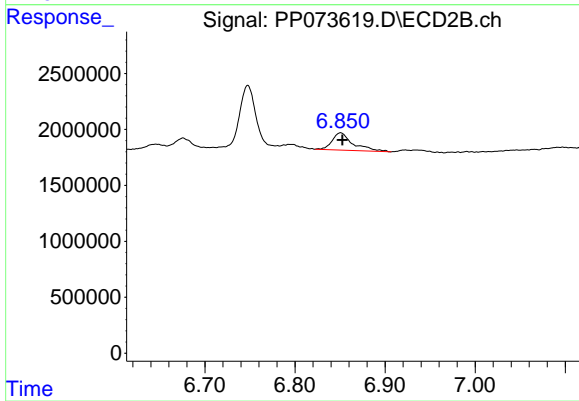
#29 AR-1254-4

R.T.: 6.437 min
Delta R.T.: 0.000 min
Response: 6381285
Conc: 67.48 ng/ml



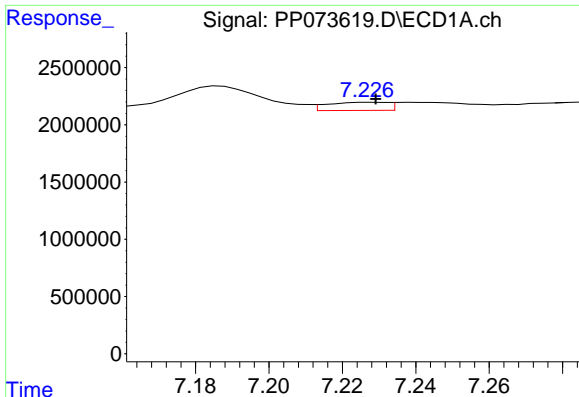
#30 AR-1254-5

R.T.: 7.763 min
Delta R.T.: 0.000 min
Response: 1858381
Conc: 25.22 ng/ml



#30 AR-1254-5

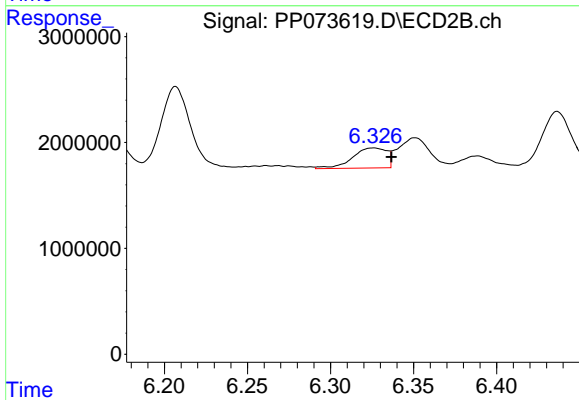
R.T.: 6.851 min
Delta R.T.: -0.002 min
Response: 2495888
Conc: 18.70 ng/ml



#31 AR-1260-1

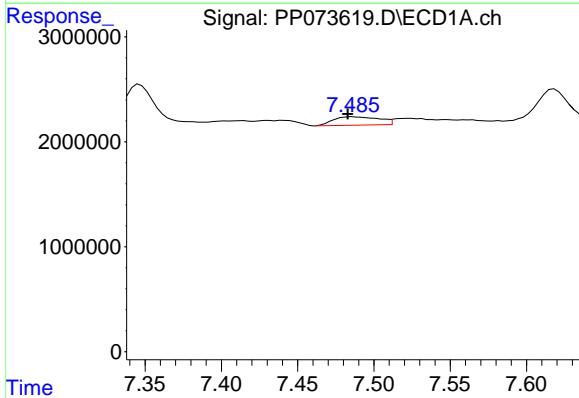
R.T.: 7.228 min
 Delta R.T.: -0.001 min
 Response: 813593
 Conc: 13.80 ng/ml

Instrument :
 ECD_P
 ClientSampleId :
 AR1242CCC500



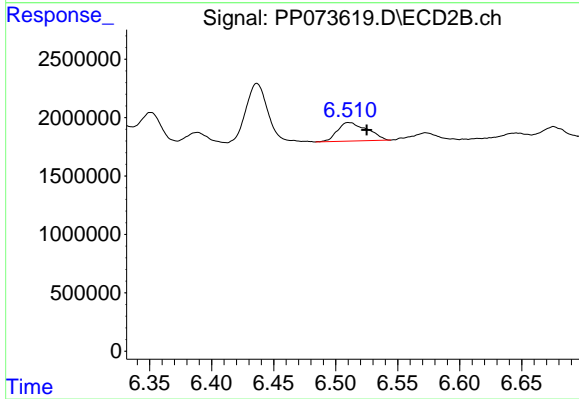
#31 AR-1260-1

R.T.: 6.326 min
 Delta R.T.: -0.011 min
 Response: 2716262
 Conc: 27.84 ng/ml



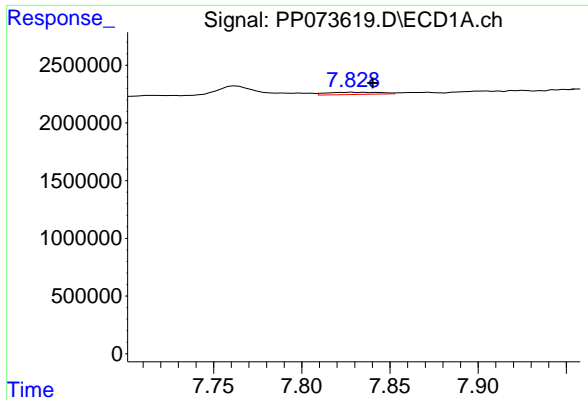
#32 AR-1260-2

R.T.: 7.486 min
 Delta R.T.: 0.003 min
 Response: 1672898
 Conc: 17.46 ng/ml



#32 AR-1260-2

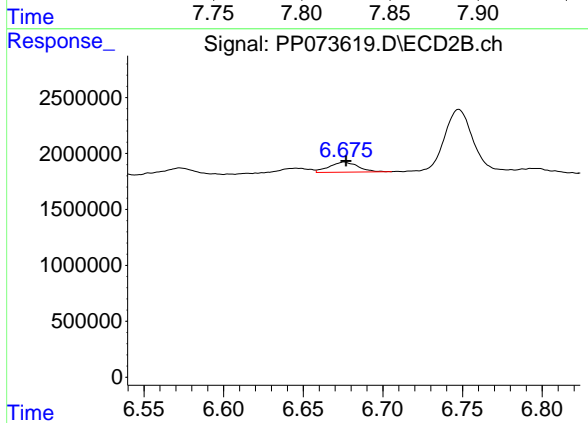
R.T.: 6.511 min
 Delta R.T.: -0.015 min
 Response: 2655958
 Conc: 21.62 ng/ml



#33 AR-1260-3

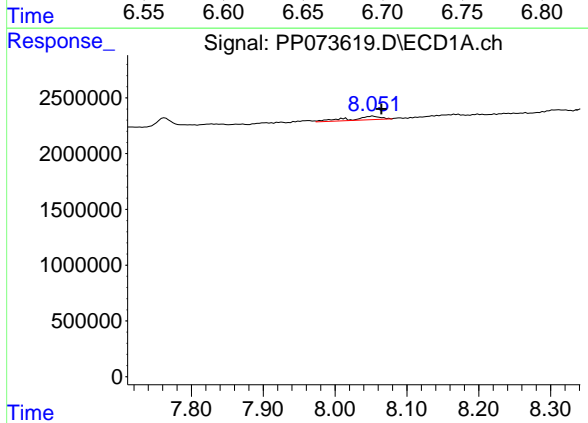
R.T.: 7.829 min
 Delta R.T.: -0.011 min
 Response: 400481
 Conc: 5.48 ng/ml

Instrument :
 ECD_P
 ClientSampleId :
 AR1242CCC500



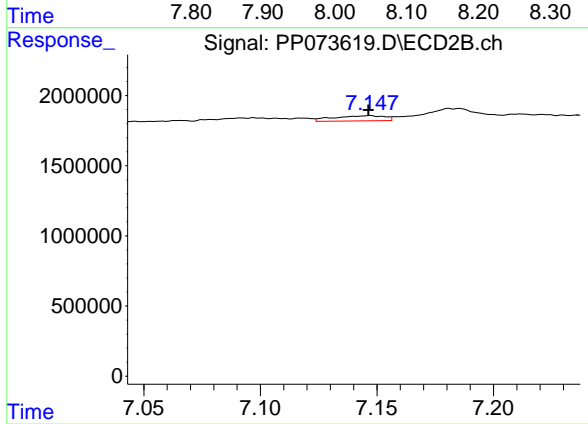
#33 AR-1260-3

R.T.: 6.676 min
 Delta R.T.: -0.001 min
 Response: 1116468
 Conc: 10.20 ng/ml



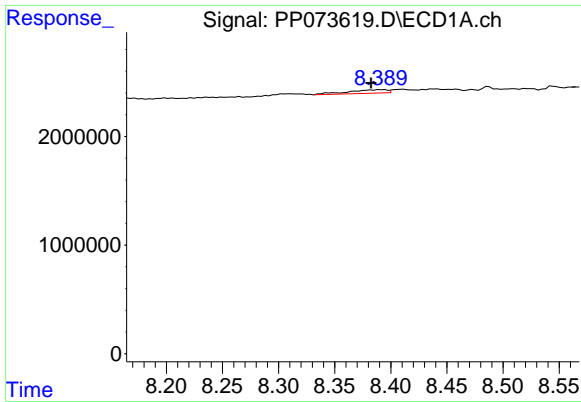
#34 AR-1260-4

R.T.: 8.053 min
 Delta R.T.: -0.012 min
 Response: 928044
 Conc: 14.21 ng/ml



#34 AR-1260-4

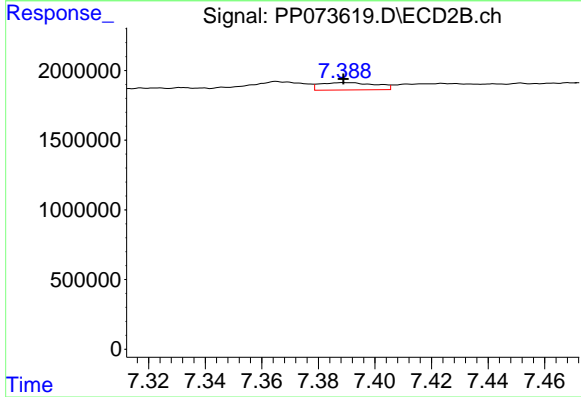
R.T.: 7.147 min
 Delta R.T.: 0.000 min
 Response: 563083
 Conc: 6.30 ng/ml



#35 AR-1260-5

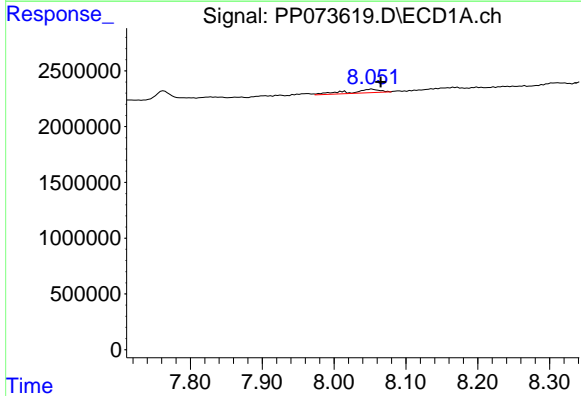
R.T.: 8.390 min
 Delta R.T.: 0.008 min
 Response: 755270
 Conc: 5.01 ng/ml

Instrument :
 ECD_P
 ClientSampleId :
 AR1242CCC500



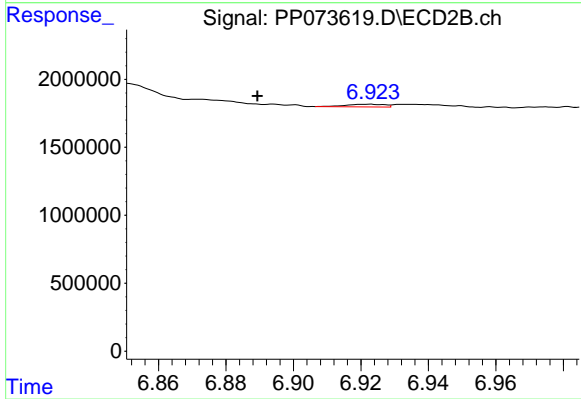
#35 AR-1260-5

R.T.: 7.389 min
 Delta R.T.: 0.000 min
 Response: 720994
 Conc: 3.21 ng/ml



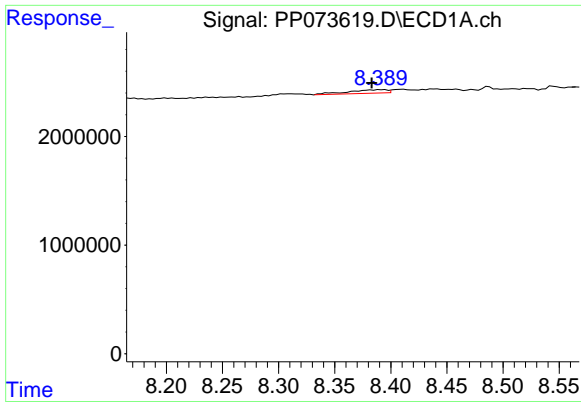
#36 AR-1262-1

R.T.: 8.053 min
 Delta R.T.: -0.013 min
 Response: 928044
 Conc: 10.66 ng/ml



#36 AR-1262-1

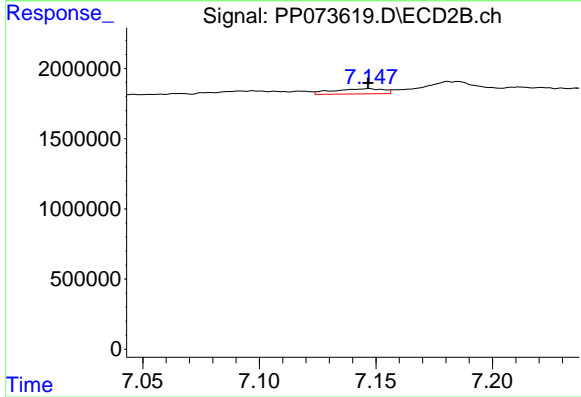
R.T.: 6.922 min
 Delta R.T.: 0.033 min
 Response: 155063
 Conc: 1.05 ng/ml



#37 AR-1262-2

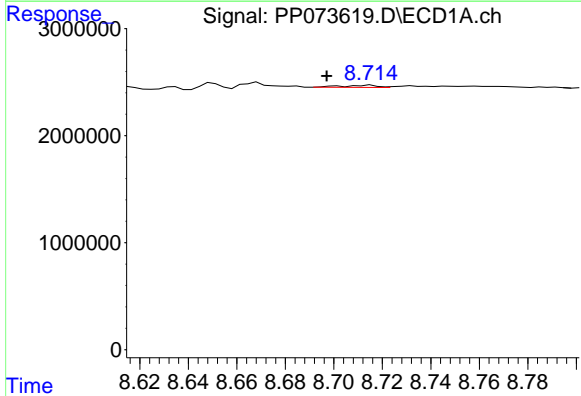
R.T.: 8.390 min
 Delta R.T.: 0.007 min
 Response: 755270
 Conc: 3.81 ng/ml

Instrument :
 ECD_P
 ClientSampleId :
 AR1242CCC500



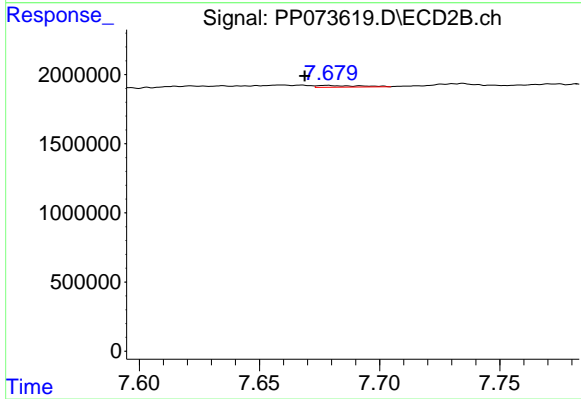
#37 AR-1262-2

R.T.: 7.147 min
 Delta R.T.: 0.000 min
 Response: 563083
 Conc: 4.40 ng/ml



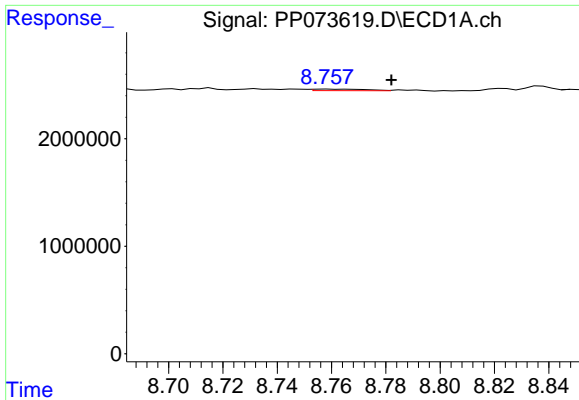
#38 AR-1262-3

R.T.: 8.701 min
 Delta R.T.: 0.004 min
 Response: 201719
 Conc: 1.60 ng/ml



#38 AR-1262-3

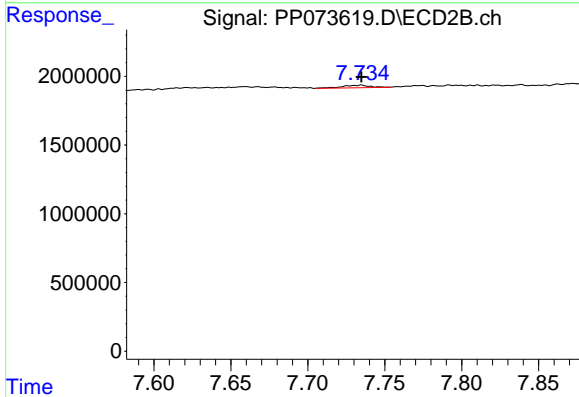
R.T.: 7.678 min
 Delta R.T.: 0.009 min
 Response: 154356
 Conc: 1.35 ng/ml



#39 AR-1262-4

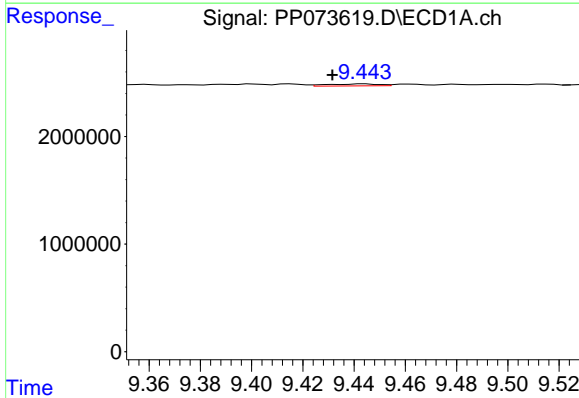
R.T.: 8.759 min
 Delta R.T.: -0.023 min
 Response: 192463
 Conc: 2.06 ng/ml

Instrument :
 ECD_P
 ClientSampleId :
 AR1242CCC500



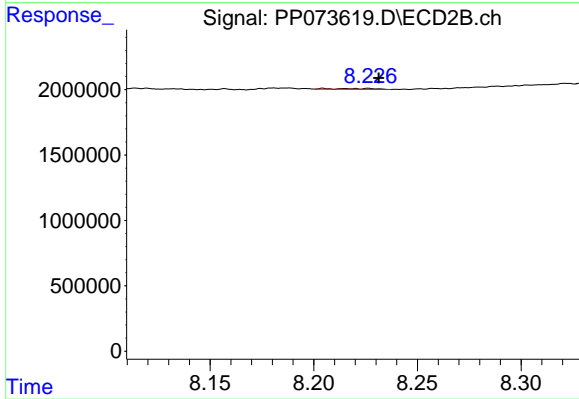
#39 AR-1262-4

R.T.: 7.735 min
 Delta R.T.: 0.000 min
 Response: 222664
 Conc: 1.21 ng/ml



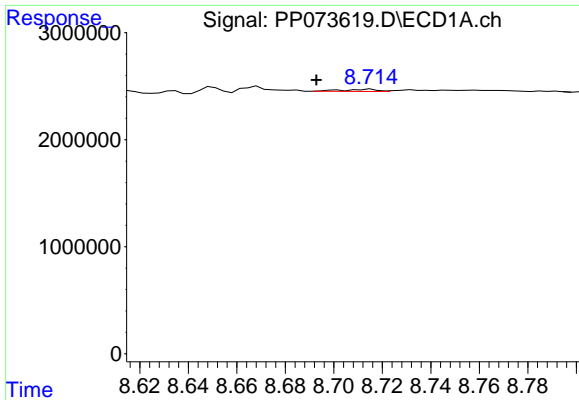
#40 AR-1262-5

R.T.: 9.444 min
 Delta R.T.: 0.013 min
 Response: 262772
 Conc: 4.15 ng/ml



#40 AR-1262-5

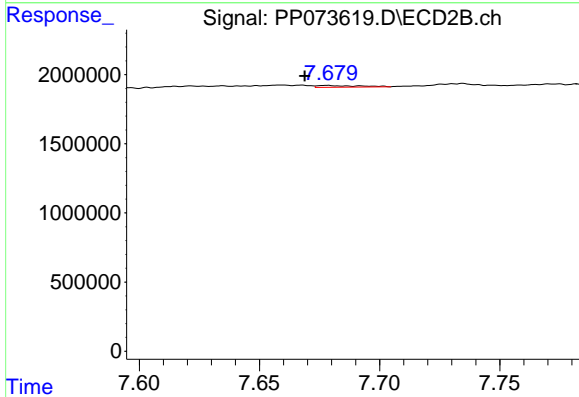
R.T.: 8.227 min
 Delta R.T.: -0.005 min
 Response: 82202
 Conc: 0.97 ng/ml



#41 AR-1268-1

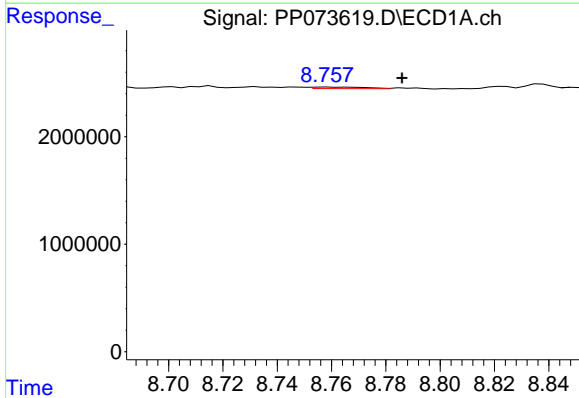
R.T.: 8.701 min
 Delta R.T.: 0.008 min
 Response: 201719
 Conc: 0.90 ng/ml

Instrument :
 ECD_P
 ClientSampleId :
 AR1242CCC500



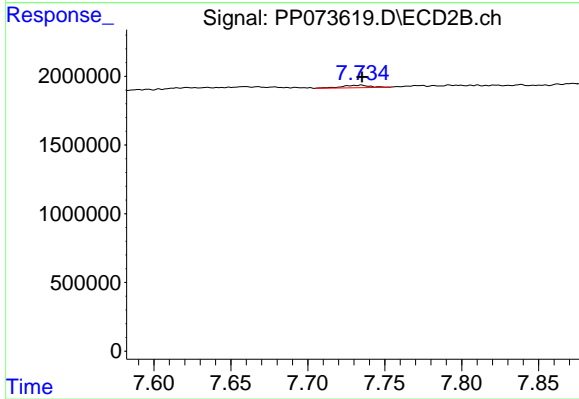
#41 AR-1268-1

R.T.: 7.678 min
 Delta R.T.: 0.009 min
 Response: 154356
 Conc: 0.50 ng/ml



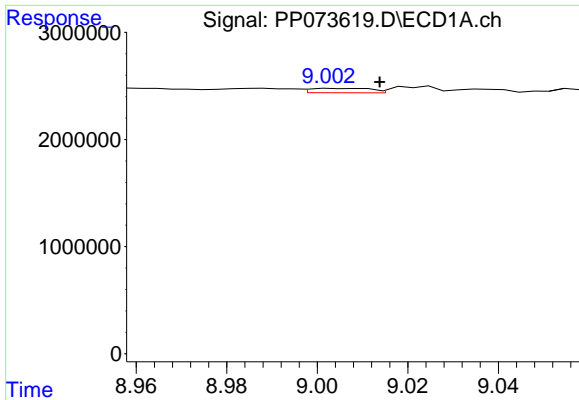
#42 AR-1268-2

R.T.: 8.759 min
 Delta R.T.: -0.027 min
 Response: 192463
 Conc: 1.01 ng/ml



#42 AR-1268-2

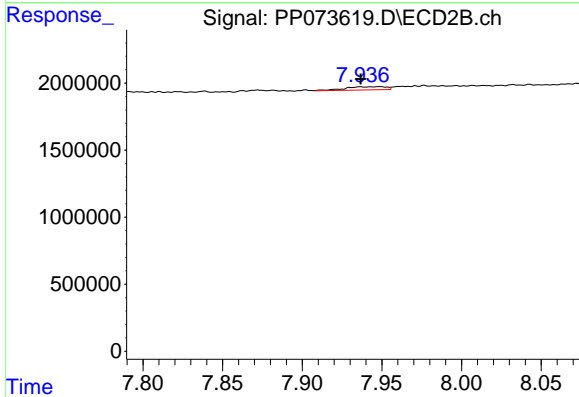
R.T.: 7.735 min
 Delta R.T.: 0.000 min
 Response: 222664
 Conc: 0.84 ng/ml



#43 AR-1268-3

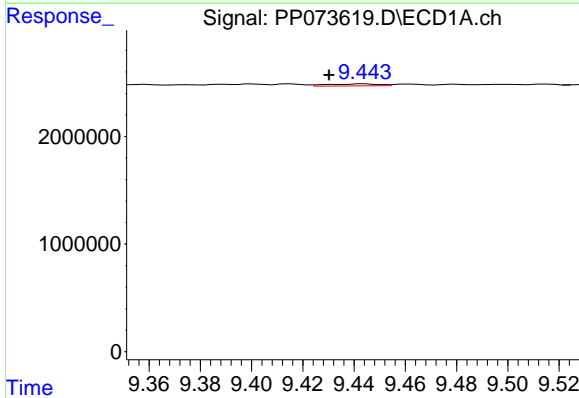
R.T.: 9.004 min
 Delta R.T.: -0.010 min
 Response: 387154
 Conc: 2.34 ng/ml

Instrument :
 ECD_P
 ClientSampleId :
 AR1242CCC500



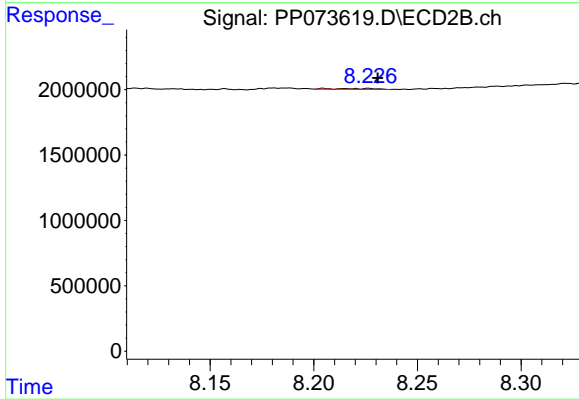
#43 AR-1268-3

R.T.: 7.948 min
 Delta R.T.: 0.012 min
 Response: 423415
 Conc: 1.88 ng/ml



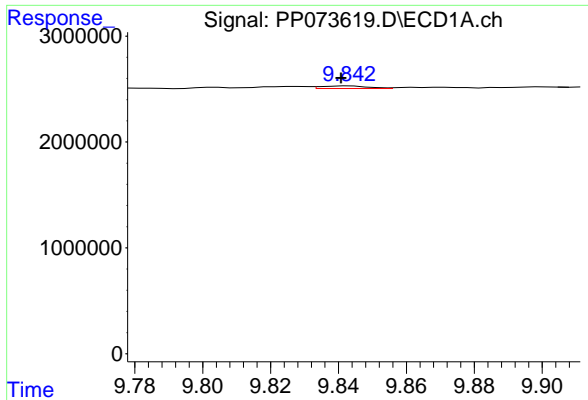
#44 AR-1268-4

R.T.: 9.444 min
 Delta R.T.: 0.014 min
 Response: 262772
 Conc: 3.78 ng/ml



#44 AR-1268-4

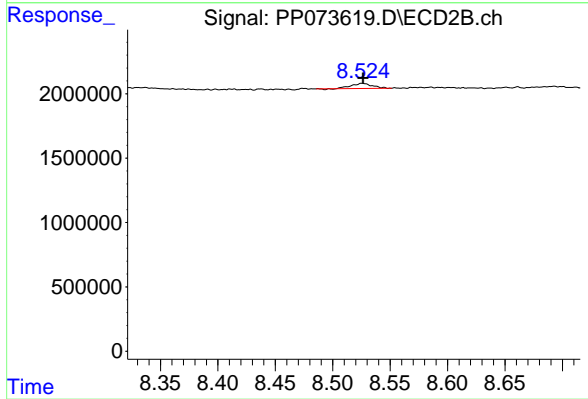
R.T.: 8.227 min
 Delta R.T.: -0.004 min
 Response: 82202
 Conc: 0.88 ng/ml



#45 AR-1268-5

R.T.: 9.844 min
 Delta R.T.: 0.003 min
 Response: 246345
 Conc: 0.53 ng/ml

Instrument :
 ECD_P
 ClientSampleId :
 AR1242CCC500



#45 AR-1268-5

R.T.: 8.526 min
 Delta R.T.: 0.000 min
 Response: 506776
 Conc: 0.82 ng/ml