

Data Path : Z:\pestpcbsrv\HPCHEM1\ECD_P\Data\PP070925\
 Data File : PP073620.D
 Signal(s) : Signal #1: ECD1A.ch Signal #2: ECD2B.ch
 Acq On : 08 Jul 2025 19:51
 Operator : YP\AJ
 Sample : AR1248CCC500
 Misc :
 ALS Vial : 5 Sample Multiplier: 1

Instrument :
 ECD_P
 ClientSampleId :
 AR1248CCC500

Integration File signal 1: autoint1.e
 Integration File signal 2: autoint2.e
 Quant Time: Jul 09 01:44:21 2025
 Quant Method : Z:\pestpcbsrv\HPCHEM1\ECD_P\methods\PP070825.M
 Quant Title : GC EXTRACTABLES
 QLast Update : Tue Jul 08 08:35:32 2025
 Response via : Initial Calibration
 Integrator: ChemStation

Volume Inj. : 2 µl
 Signal #1 Phase : ZB-MR1 Signal #2 Phase: ZB-MR2
 Signal #1 Info : 30Mx0.32mmx 0.50µ Signal #2 Info : 30M x 0.32mm x 0.25µm

Compound	RT#1	RT#2	Resp#1	Resp#2	ng/ml	ng/ml

System Monitoring Compounds						
1) SA Tetrachlo...	4.488	3.779	70694558	97124950	51.620	52.720
2) SA Decachlor...	10.174	8.779	57115936	72940457	52.349	55.126
Target Compounds						
3) L1 AR-1016-1	5.638	4.857	15648284	23644993	329.343	346.829
4) L1 AR-1016-2	5.660	4.875	18767255	24567343	263.530	241.130
5) L1 AR-1016-3	5.722	5.052	9462879	16061677	216.725	296.854 #
6) L1 AR-1016-4	5.819	5.093	10539469	31399969	293.206	715.574 #
7) L1 AR-1016-5	6.111	5.306	23146000	39935019	738.771	731.645
8) L2 AR-1221-1	4.693	3.989	168691	464640	9.442	17.180 #
9) L2 AR-1221-2	4.790	4.079	1353439	1898811	100.222	93.260
10) L2 AR-1221-3	4.850	4.149	1658418	2227808	39.861	36.255
11) L3 AR-1232-1	4.850	4.149	1658418	2227808	50.793	47.792
12) L3 AR-1232-2	5.374	4.875	7017195	24567343	431.703	515.473
13) L3 AR-1232-3	5.660	5.052	18767255	16061677	568.817	641.722
14) L3 AR-1232-4	5.819	5.135	10539469	32860782	640.886	1517.378 #
15) L3 AR-1232-5	5.909	5.306	20384143	39935019	1928.425	1769.899
16) L4 AR-1242-1	5.638	4.857	15648284	23644993	409.767	409.332
17) L4 AR-1242-2	5.660	4.875	18767255	24567343	313.404	284.166
18) L4 AR-1242-3	5.722	5.052	9462879	16061677	258.401	349.572 #
19) L4 AR-1242-4	5.819	5.135	10539469	32860782	327.964	742.393 #
20) L4 AR-1242-5	6.549	5.656	27901447	54286908	852.294	982.702
21) L5 AR-1248-1	5.638	4.857	15648284	23644993	506.900	526.674
22) L5 AR-1248-2	5.909	5.093	20384143	31399969	510.582	510.266
23) L5 AR-1248-3	6.111	5.135	23146000	32860782	521.193	512.933
24) L5 AR-1248-4	6.510	5.306	28640432	39935019	519.974	529.801
25) L5 AR-1248-5	6.549	5.698	27901447	39158296	518.704	524.974
26) L6 AR-1254-1	6.485	5.656	20692134	54286908	386.123	467.869
27) L6 AR-1254-2	6.705	5.805	27396456	16729933	328.933	166.263 #
28) L6 AR-1254-3	7.065	6.206	15828579	24344618	179.195	157.625
29) L6 AR-1254-4	7.347	6.435	12433827	15916893	158.056	168.327
30) L6 AR-1254-5	7.763	6.850	2372000	5026624	32.193	37.668
31) L7 AR-1260-1	7.232	6.350	2069339	12635502	35.097	129.515 #
32) L7 AR-1260-2	7.483	6.522	1801863	3069714	18.801	24.990 #
33) L7 AR-1260-3	7.826	6.675	427463	2861776	5.850	26.144 #
34) L7 AR-1260-4	8.053	7.146	1023897	1091266	15.680	12.205
35) L7 AR-1260-5	8.382	7.387	856673	1493686	5.679	6.646
36) L8 AR-1262-1	8.053	6.920	1023897	655120	11.765	4.436 #
37) L8 AR-1262-2	8.382	7.146	856673	1091266	4.326	8.537 #
38) L8 AR-1262-3	8.692	7.669	721732	574606	5.741	5.040
39) L8 AR-1262-4	8.788	7.731	601862	750857	6.453	4.080 #
40) L8 AR-1262-5	9.437	8.227	179832	163936	2.837	1.942 #
41) L9 AR-1268-1	8.692	7.669	721732	574606	3.233	1.869 #

Data Path : Z:\pestpcbsrv\HPCHEM1\ECD_P\Data\PP070925\
 Data File : PP073620.D
 Signal(s) : Signal #1: ECD1A.ch Signal #2: ECD2B.ch
 Acq On : 08 Jul 2025 19:51
 Operator : YP\AJ
 Sample : AR1248CCC500
 Misc :
 ALS Vial : 5 Sample Multiplier: 1

Instrument :
 ECD_P
ClientSampleId :
 AR1248CCC500

Integration File signal 1: autoint1.e
 Integration File signal 2: autoint2.e
 Quant Time: Jul 09 01:44:21 2025
 Quant Method : Z:\pestpcbsrv\HPCHEM1\ECD_P\methods\PP070825.M
 Quant Title : GC EXTRACTABLES
 QLast Update : Tue Jul 08 08:35:32 2025
 Response via : Initial Calibration
 Integrator: ChemStation

Volume Inj. : 2 µl
 Signal #1 Phase : ZB-MR1 Signal #2 Phase: ZB-MR2
 Signal #1 Info : 30Mx0.32mmx 0.50µ Signal #2 Info : 30M x 0.32mm x 0.25µm

	Compound	RT#1	RT#2	Resp#1	Resp#2	ng/ml	ng/ml
42)	L9 AR-1268-2	8.788	7.731	601862	750857	3.159	2.826
43)	L9 AR-1268-3	9.009	7.940	1633433	232755	9.865	1.032 #
44)	L9 AR-1268-4	9.437	8.227	179832	163936	2.586	1.763 #
45)	L9 AR-1268-5	9.856	8.523	988670	741502	2.145	1.203 #

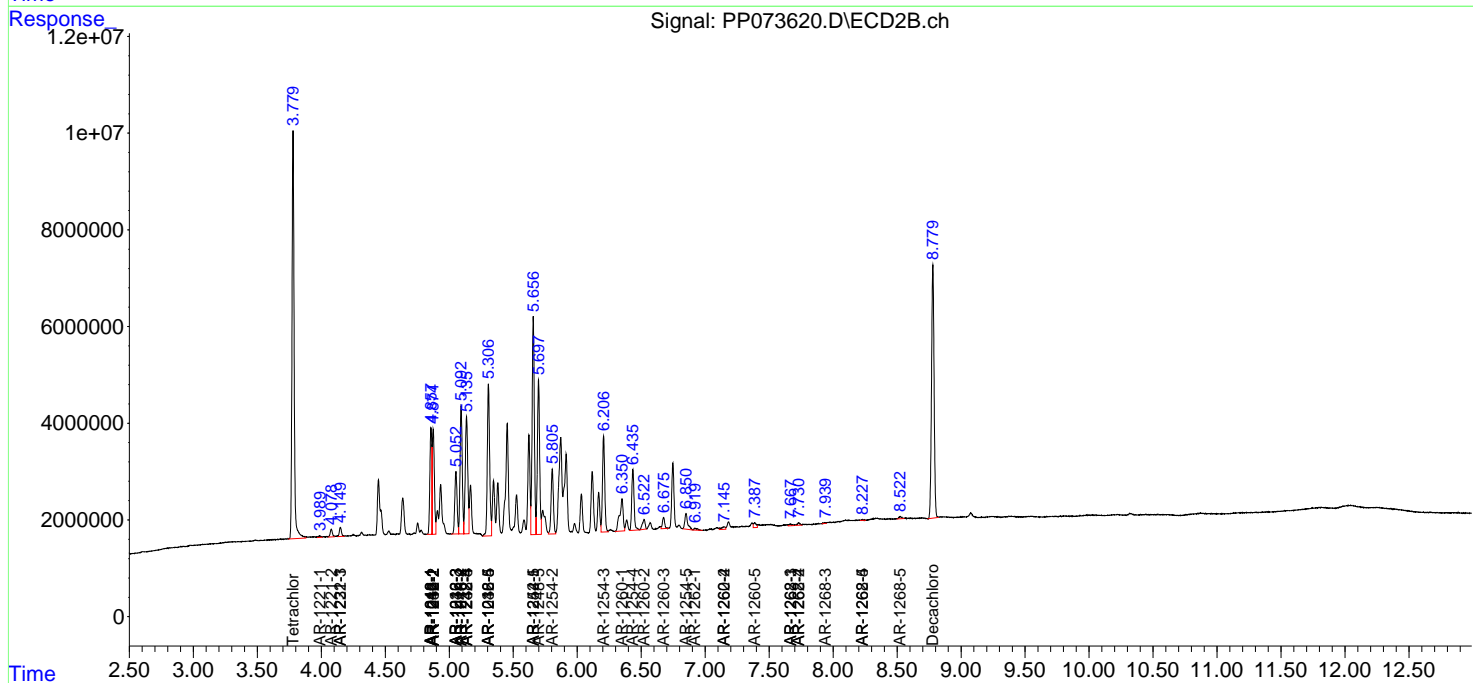
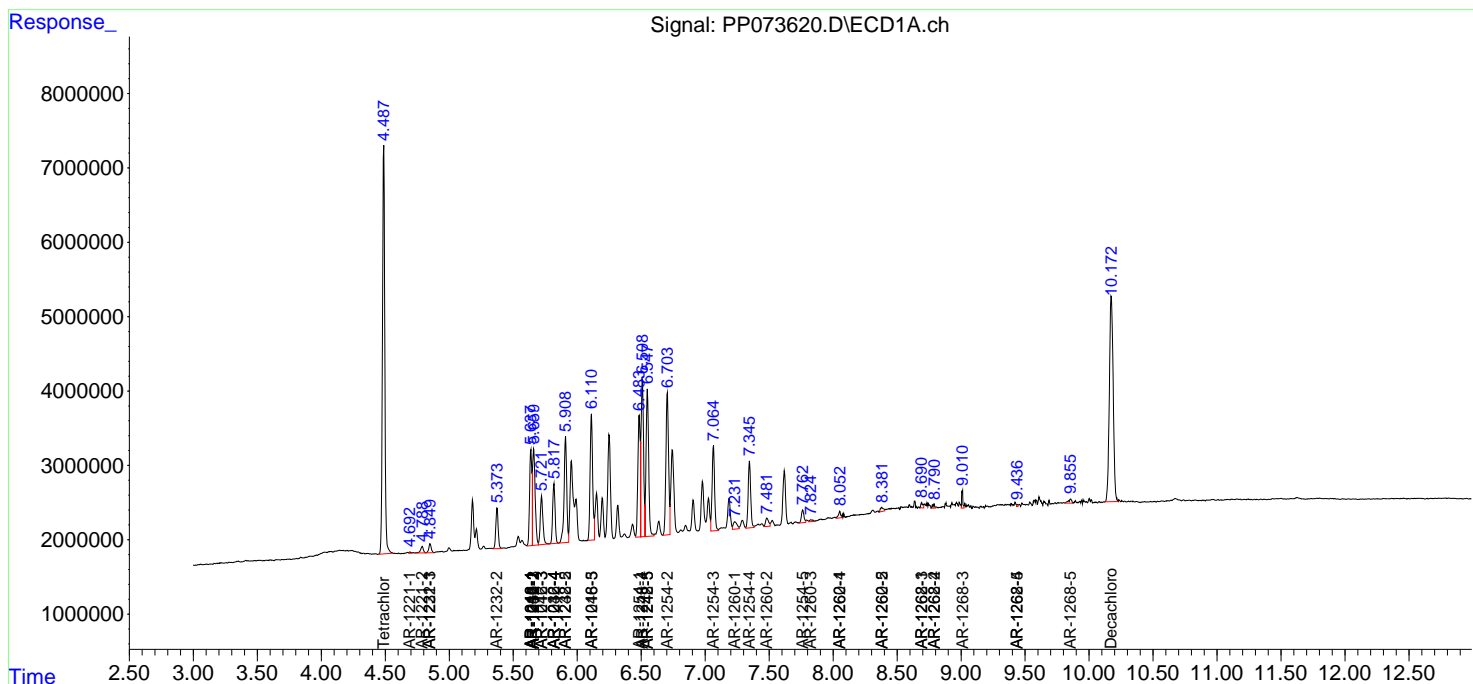
(f)=RT Delta > 1/2 Window (#)=Amounts differ by > 25% (m)=manual int.

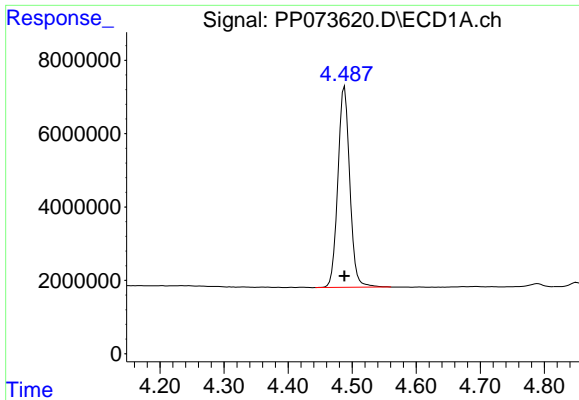
Data Path : Z:\pestpcbsrv\HPCHEM1\ECD_P\Data\PP070925\
 Data File : PP073620.D
 Signal(s) : Signal #1: ECD1A.ch Signal #2: ECD2B.ch
 Acq On : 08 Jul 2025 19:51
 Operator : YP\AJ
 Sample : AR1248CCC500
 Misc :
 ALS Vial : 5 Sample Multiplier: 1

Instrument :
 ECD_P
 ClientSampleId :
 AR1248CCC500

Integration File signal 1: autoint1.e
 Integration File signal 2: autoint2.e
 Quant Time: Jul 09 01:44:21 2025
 Quant Method : Z:\pestpcbsrv\HPCHEM1\ECD_P\methods\PP070825.M
 Quant Title : GC EXTRACTABLES
 QLast Update : Tue Jul 08 08:35:32 2025
 Response via : Initial Calibration
 Integrator: ChemStation

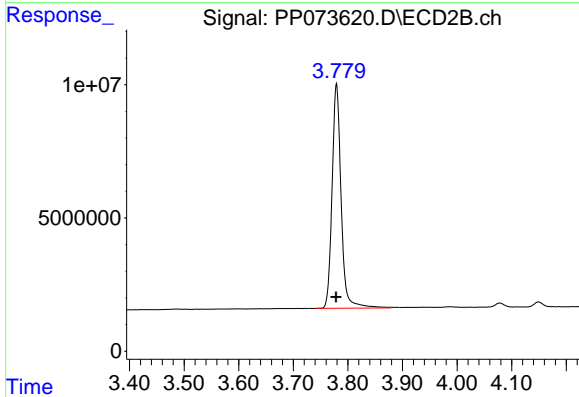
Volume Inj. : 2 µl
 Signal #1 Phase : ZB-MR1 Signal #2 Phase: ZB-MR2
 Signal #1 Info : 30Mx0.32mmx 0.50µ Signal #2 Info : 30M x 0.32mm x 0.25µm



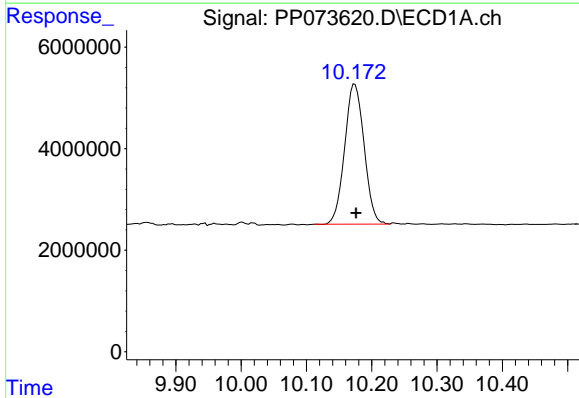


#1 Tetrachloro-m-xylene
R.T.: 4.488 min
Delta R.T.: 0.000 min
Response: 70694558
Conc: 51.62 ng/ml

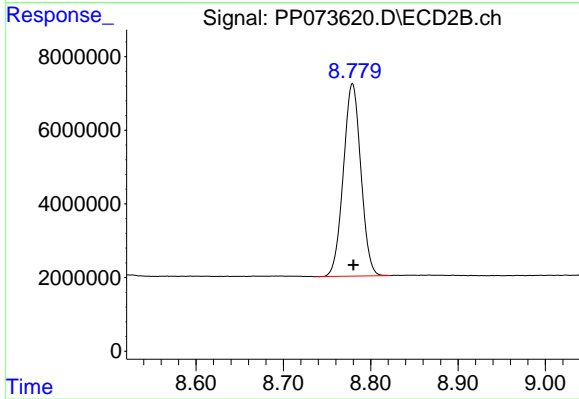
Instrument :
ECD_P
ClientSampleId :
AR1248CCC500



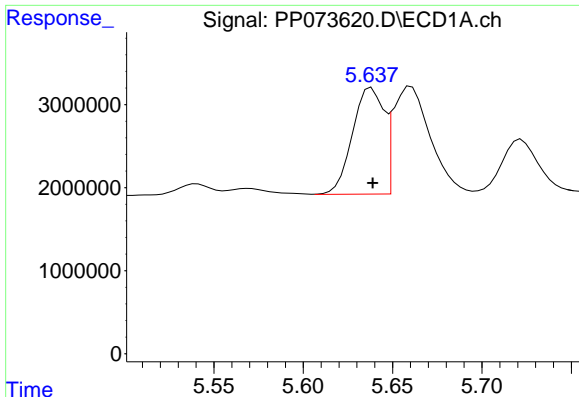
#1 Tetrachloro-m-xylene
R.T.: 3.779 min
Delta R.T.: 0.000 min
Response: 97124950
Conc: 52.72 ng/ml



#2 Decachlorobiphenyl
R.T.: 10.174 min
Delta R.T.: -0.002 min
Response: 57115936
Conc: 52.35 ng/ml



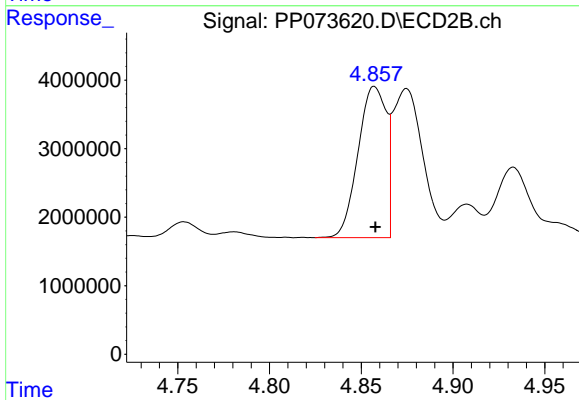
#2 Decachlorobiphenyl
R.T.: 8.779 min
Delta R.T.: -0.001 min
Response: 72940457
Conc: 55.13 ng/ml



#3 AR-1016-1

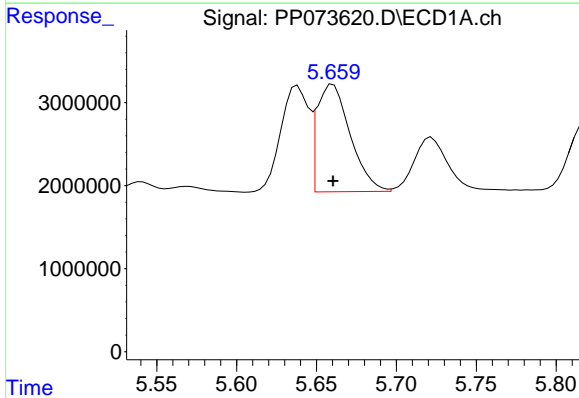
R.T.: 5.638 min
 Delta R.T.: 0.000 min
 Response: 15648284
 Conc: 329.34 ng/ml

Instrument :
 ECD_P
 ClientSampleId :
 AR1248CCC500



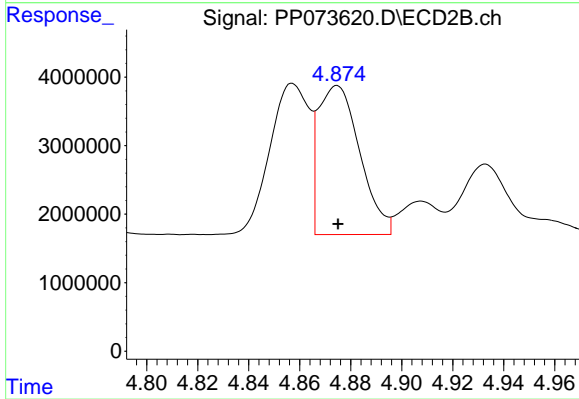
#3 AR-1016-1

R.T.: 4.857 min
 Delta R.T.: 0.000 min
 Response: 23644993
 Conc: 346.83 ng/ml



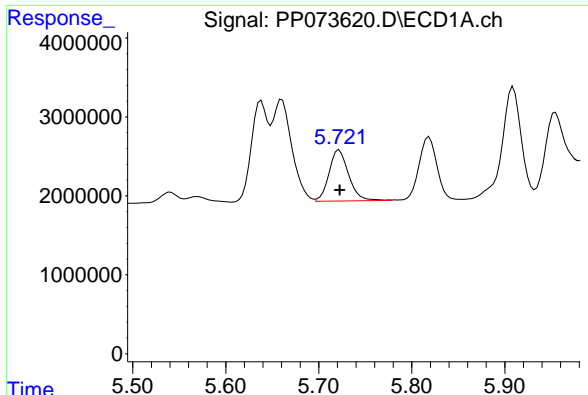
#4 AR-1016-2

R.T.: 5.660 min
 Delta R.T.: 0.000 min
 Response: 18767255
 Conc: 263.53 ng/ml



#4 AR-1016-2

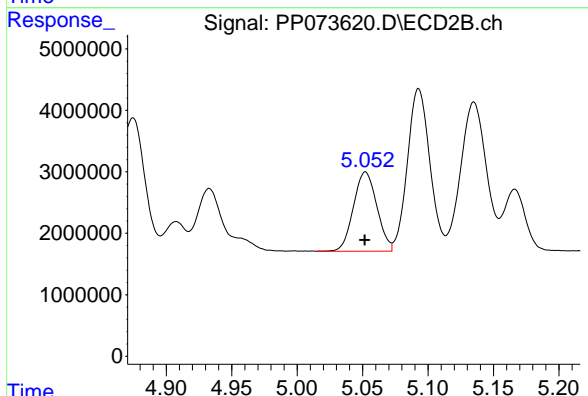
R.T.: 4.875 min
 Delta R.T.: 0.000 min
 Response: 24567343
 Conc: 241.13 ng/ml



#5 AR-1016-3

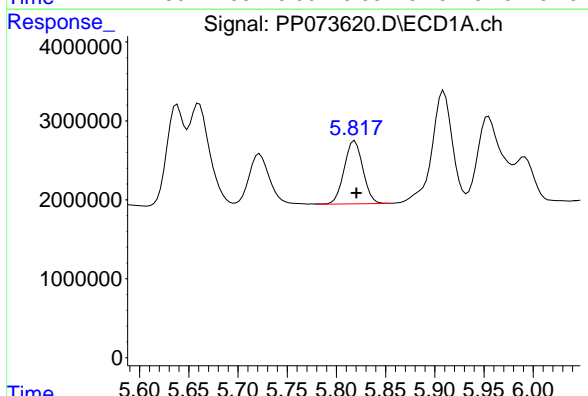
R.T.: 5.722 min
 Delta R.T.: 0.000 min
 Response: 9462879
 Conc: 216.72 ng/ml

Instrument :
 ECD_P
 ClientSampleId :
 AR1248CCC500



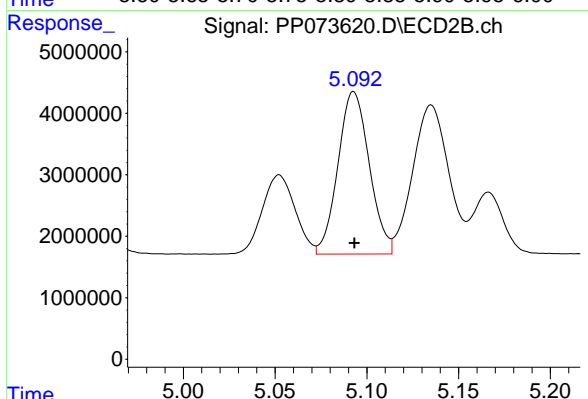
#5 AR-1016-3

R.T.: 5.052 min
 Delta R.T.: 0.000 min
 Response: 16061677
 Conc: 296.85 ng/ml



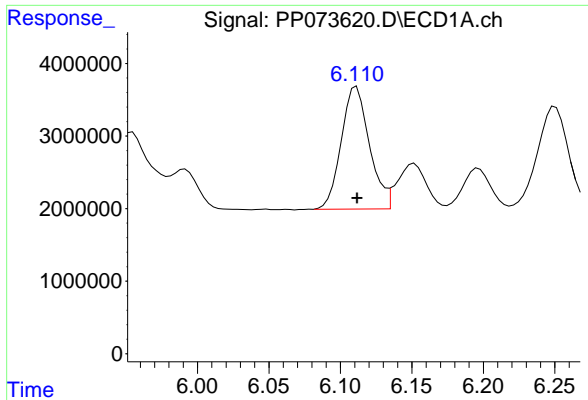
#6 AR-1016-4

R.T.: 5.819 min
 Delta R.T.: -0.001 min
 Response: 10539469
 Conc: 293.21 ng/ml



#6 AR-1016-4

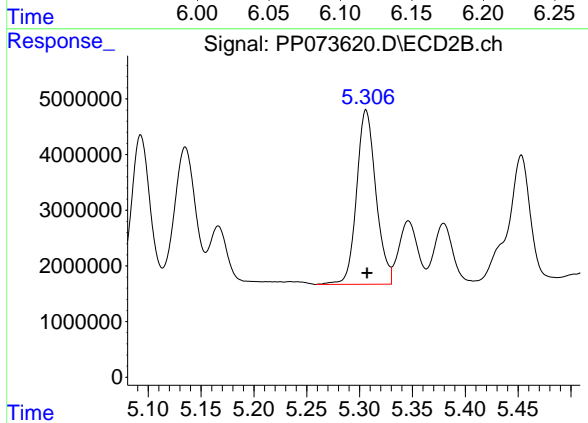
R.T.: 5.093 min
 Delta R.T.: 0.000 min
 Response: 31399969
 Conc: 715.57 ng/ml



#7 AR-1016-5

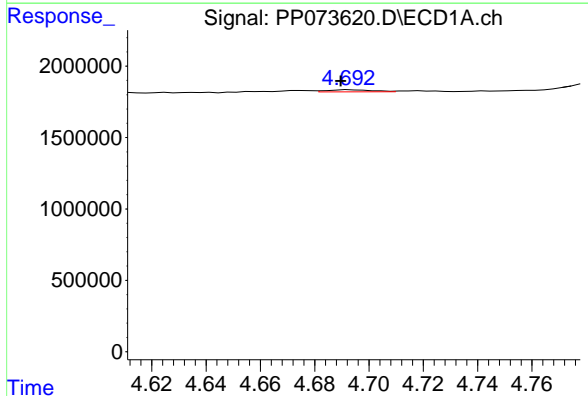
R.T.: 6.111 min
 Delta R.T.: 0.000 min
 Response: 23146000
 Conc: 738.77 ng/ml

Instrument :
 ECD_P
 ClientSampleId :
 AR1248CCC500



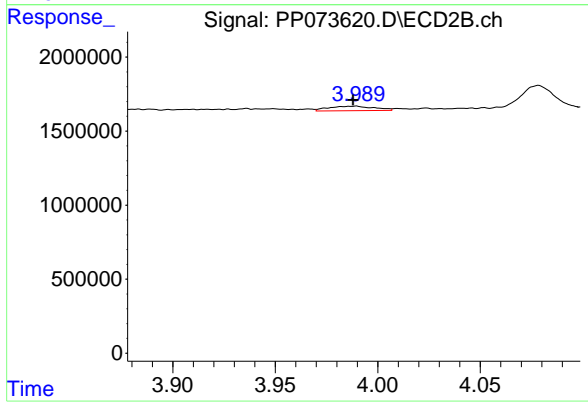
#7 AR-1016-5

R.T.: 5.306 min
 Delta R.T.: 0.000 min
 Response: 39935019
 Conc: 731.64 ng/ml



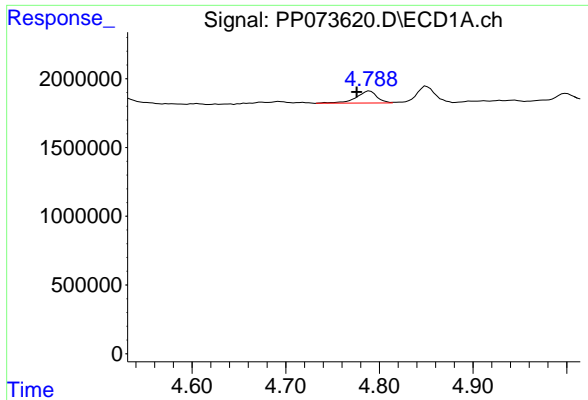
#8 AR-1221-1

R.T.: 4.693 min
 Delta R.T.: 0.003 min
 Response: 168691
 Conc: 9.44 ng/ml



#8 AR-1221-1

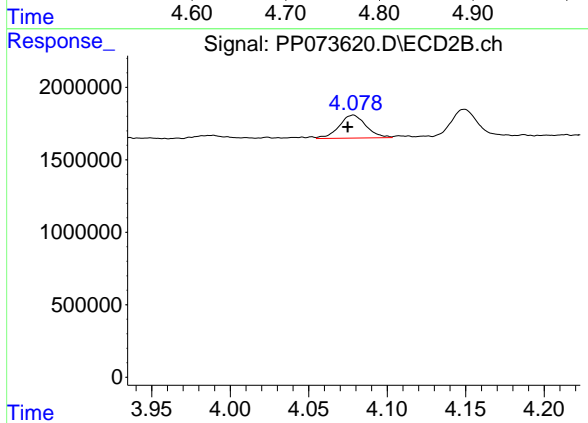
R.T.: 3.989 min
 Delta R.T.: 0.002 min
 Response: 464640
 Conc: 17.18 ng/ml



#9 AR-1221-2

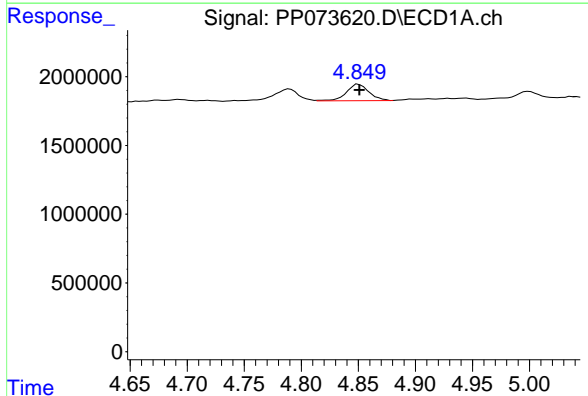
R.T.: 4.790 min
 Delta R.T.: 0.014 min
 Response: 1353439
 Conc: 100.22 ng/ml

Instrument :
 ECD_P
 ClientSampleId :
 AR1248CCC500



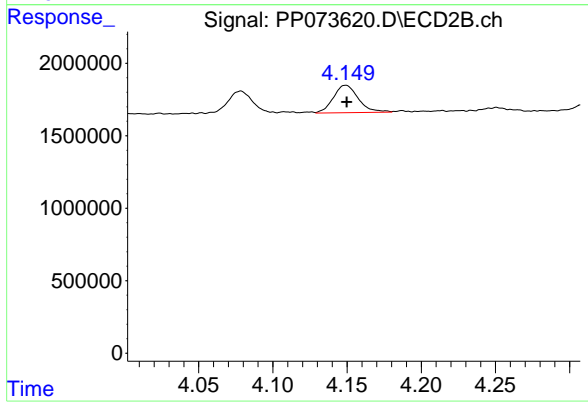
#9 AR-1221-2

R.T.: 4.079 min
 Delta R.T.: 0.004 min
 Response: 1898811
 Conc: 93.26 ng/ml



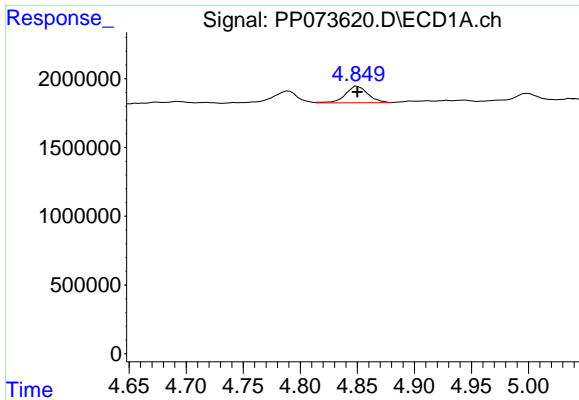
#10 AR-1221-3

R.T.: 4.850 min
 Delta R.T.: 0.000 min
 Response: 1658418
 Conc: 39.86 ng/ml



#10 AR-1221-3

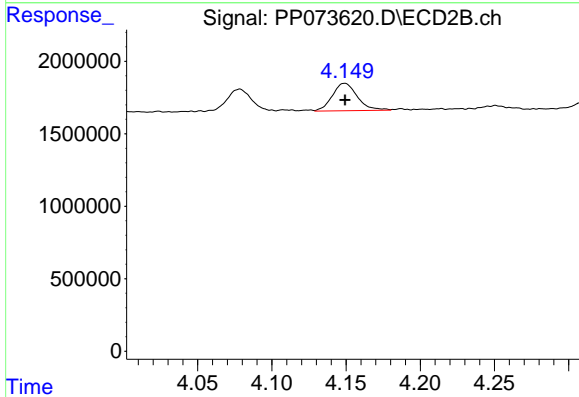
R.T.: 4.149 min
 Delta R.T.: 0.000 min
 Response: 2227808
 Conc: 36.25 ng/ml



#11 AR-1232-1

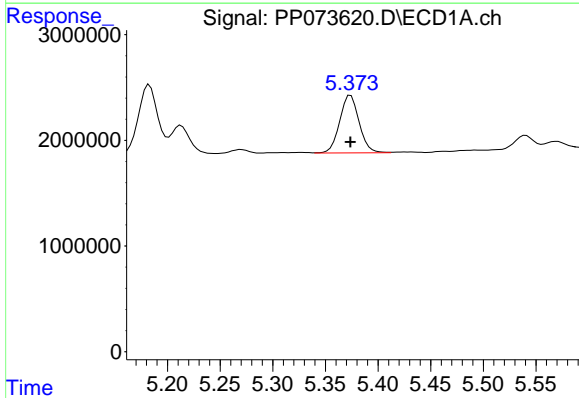
R.T.: 4.850 min
 Delta R.T.: 0.000 min
 Response: 1658418
 Conc: 50.79 ng/ml

Instrument :
 ECD_P
 ClientSampleId :
 AR1248CCC500



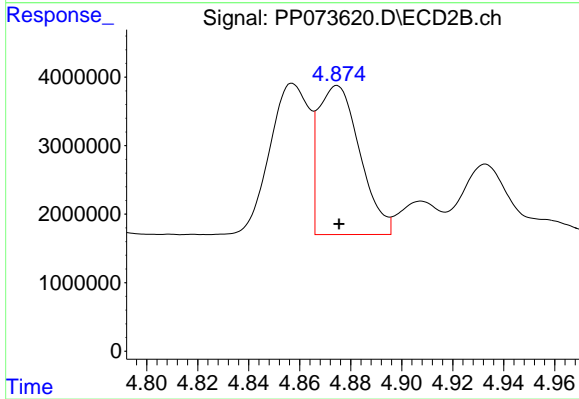
#11 AR-1232-1

R.T.: 4.149 min
 Delta R.T.: 0.000 min
 Response: 2227808
 Conc: 47.79 ng/ml



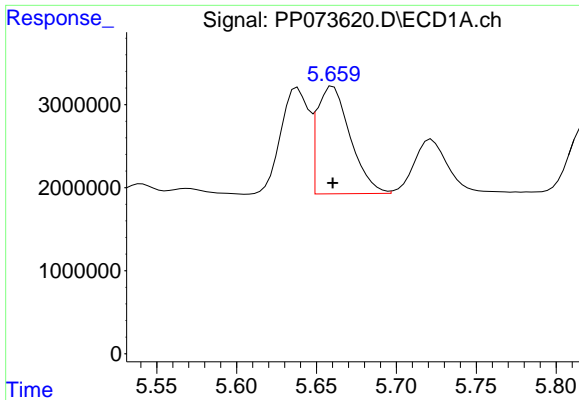
#12 AR-1232-2

R.T.: 5.374 min
 Delta R.T.: 0.000 min
 Response: 7017195
 Conc: 431.70 ng/ml



#12 AR-1232-2

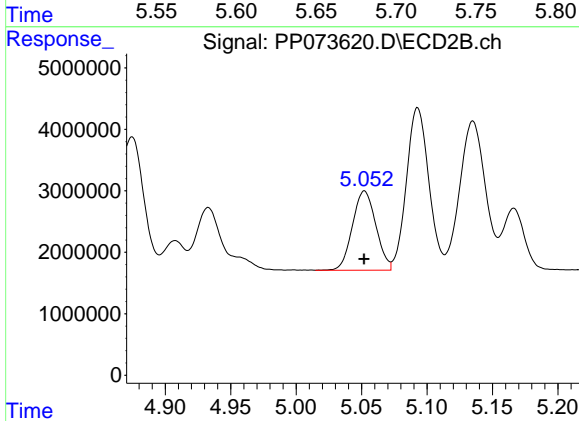
R.T.: 4.875 min
 Delta R.T.: 0.000 min
 Response: 24567343
 Conc: 515.47 ng/ml



#13 AR-1232-3

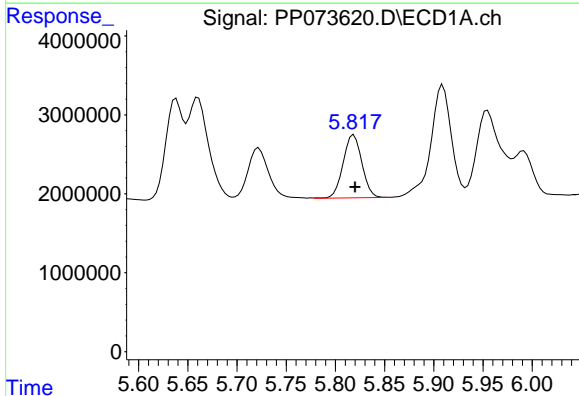
R.T.: 5.660 min
 Delta R.T.: 0.000 min
 Response: 18767255
 Conc: 568.82 ng/ml

Instrument :
 ECD_P
 ClientSampleId :
 AR1248CCC500



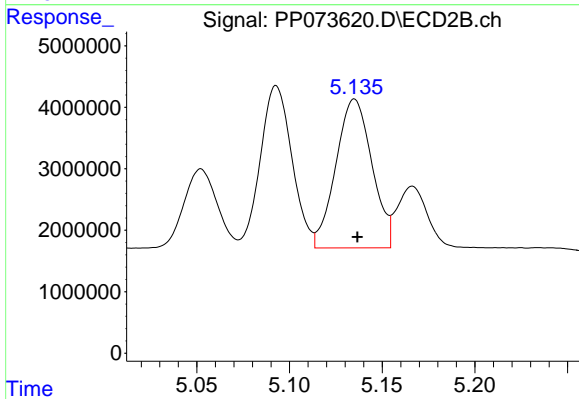
#13 AR-1232-3

R.T.: 5.052 min
 Delta R.T.: 0.000 min
 Response: 16061677
 Conc: 641.72 ng/ml



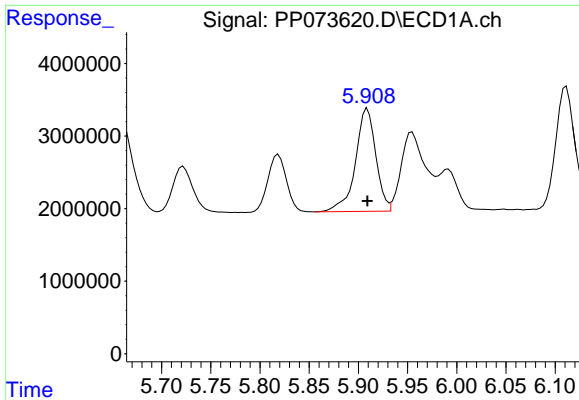
#14 AR-1232-4

R.T.: 5.819 min
 Delta R.T.: -0.001 min
 Response: 10539469
 Conc: 640.89 ng/ml



#14 AR-1232-4

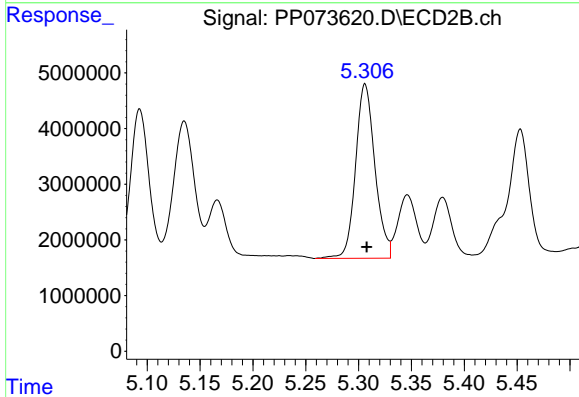
R.T.: 5.135 min
 Delta R.T.: -0.002 min
 Response: 32860782
 Conc: 1517.38 ng/ml



#15 AR-1232-5

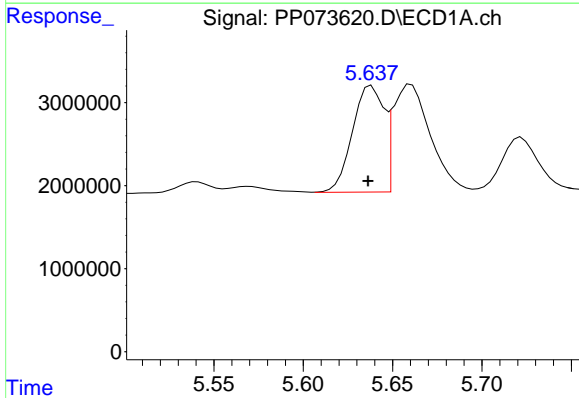
R.T.: 5.909 min
 Delta R.T.: 0.000 min
 Response: 20384143
 Conc: 1928.42 ng/ml

Instrument :
 ECD_P
 ClientSampleId :
 AR1248CCC500



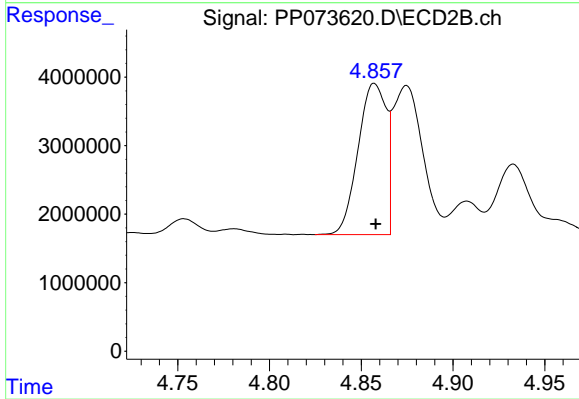
#15 AR-1232-5

R.T.: 5.306 min
 Delta R.T.: -0.002 min
 Response: 39935019
 Conc: 1769.90 ng/ml



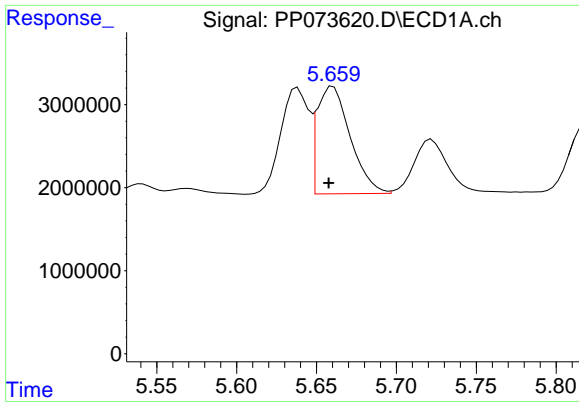
#16 AR-1242-1

R.T.: 5.638 min
 Delta R.T.: 0.002 min
 Response: 15648284
 Conc: 409.77 ng/ml



#16 AR-1242-1

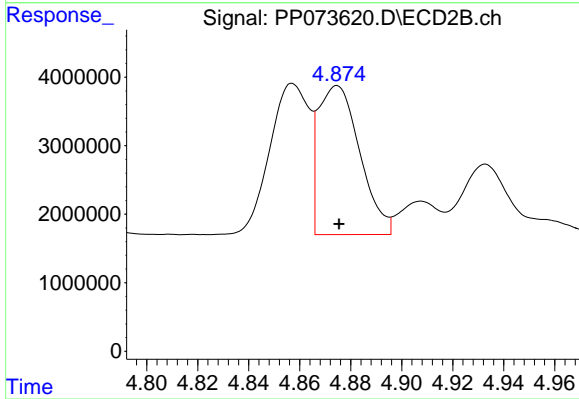
R.T.: 4.857 min
 Delta R.T.: 0.000 min
 Response: 23644993
 Conc: 409.33 ng/ml



#17 AR-1242-2

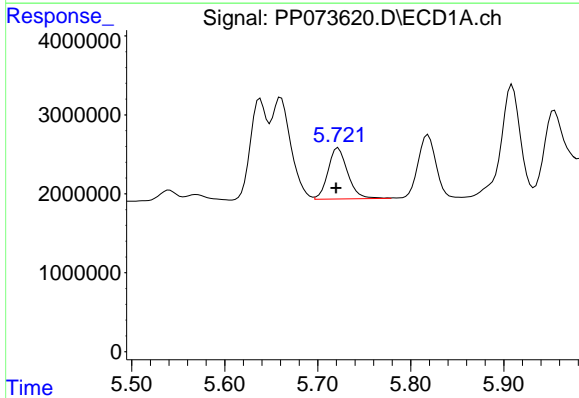
R.T.: 5.660 min
 Delta R.T.: 0.003 min
 Response: 18767255
 Conc: 313.40 ng/ml

Instrument :
 ECD_P
 ClientSampleId :
 AR1248CCC500



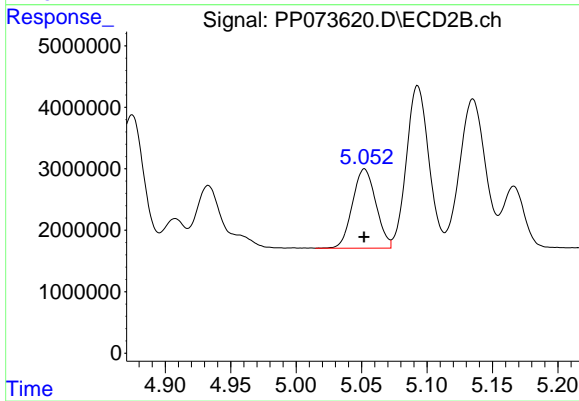
#17 AR-1242-2

R.T.: 4.875 min
 Delta R.T.: 0.000 min
 Response: 24567343
 Conc: 284.17 ng/ml



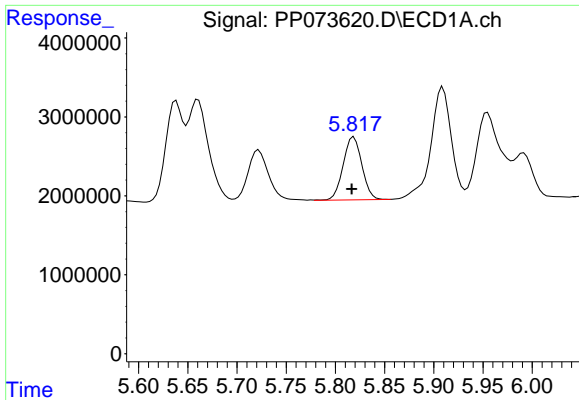
#18 AR-1242-3

R.T.: 5.722 min
 Delta R.T.: 0.002 min
 Response: 9462879
 Conc: 258.40 ng/ml



#18 AR-1242-3

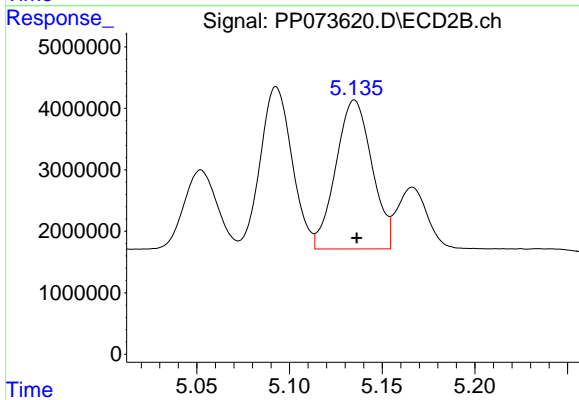
R.T.: 5.052 min
 Delta R.T.: 0.000 min
 Response: 16061677
 Conc: 349.57 ng/ml



#19 AR-1242-4

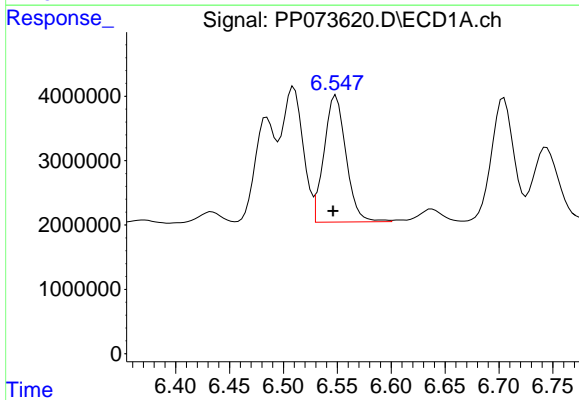
R.T.: 5.819 min
 Delta R.T.: 0.002 min
 Response: 10539469
 Conc: 327.96 ng/ml

Instrument :
 ECD_P
 ClientSampleId :
 AR1248CCC500



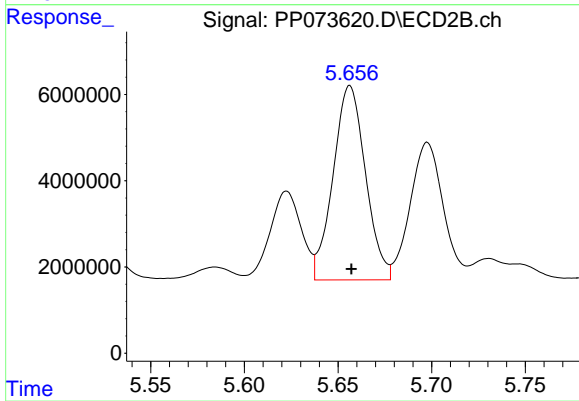
#19 AR-1242-4

R.T.: 5.135 min
 Delta R.T.: -0.001 min
 Response: 32860782
 Conc: 742.39 ng/ml



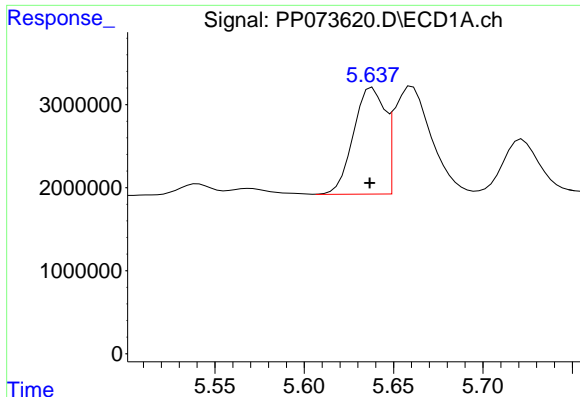
#20 AR-1242-5

R.T.: 6.549 min
 Delta R.T.: 0.003 min
 Response: 27901447
 Conc: 852.29 ng/ml



#20 AR-1242-5

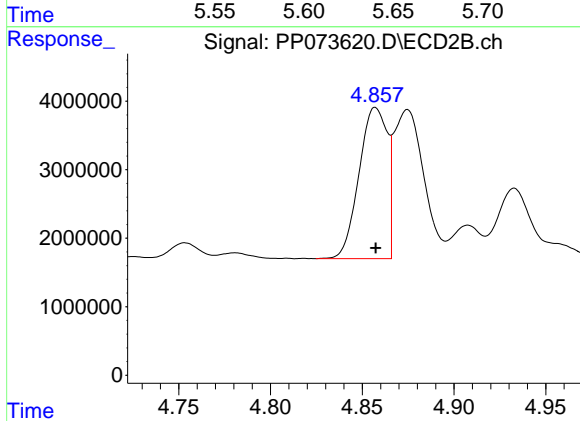
R.T.: 5.656 min
 Delta R.T.: 0.000 min
 Response: 54286908
 Conc: 982.70 ng/ml



#21 AR-1248-1

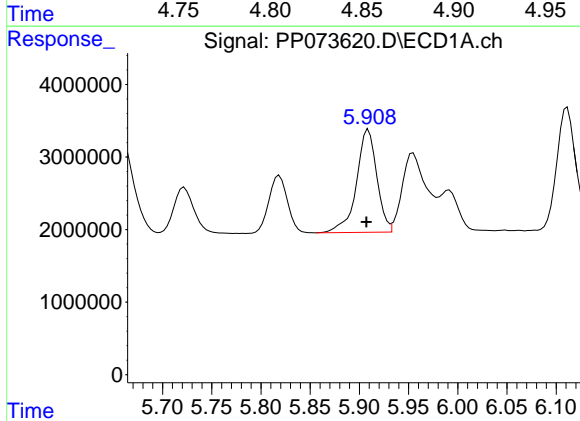
R.T.: 5.638 min
 Delta R.T.: 0.002 min
 Response: 15648284
 Conc: 506.90 ng/ml

Instrument :
 ECD_P
 ClientSampleId :
 AR1248CCC500



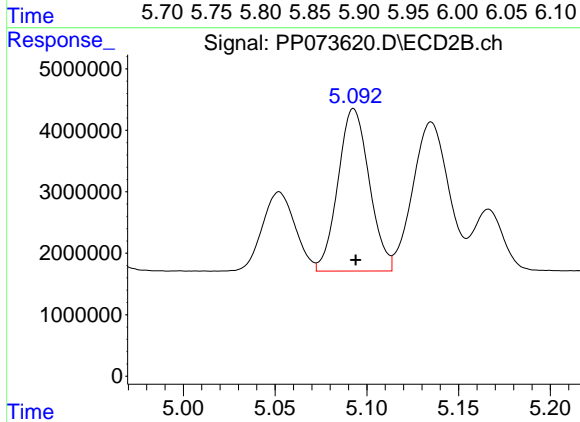
#21 AR-1248-1

R.T.: 4.857 min
 Delta R.T.: 0.000 min
 Response: 23644993
 Conc: 526.67 ng/ml



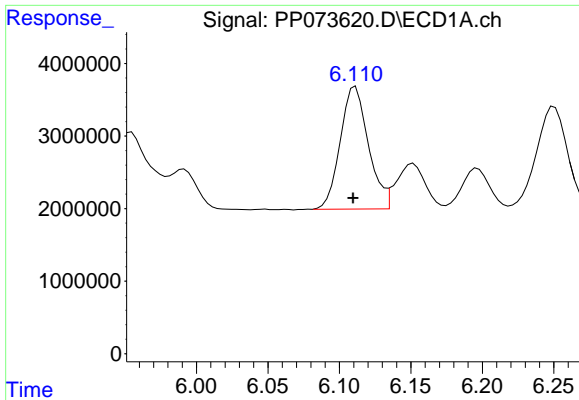
#22 AR-1248-2

R.T.: 5.909 min
 Delta R.T.: 0.002 min
 Response: 20384143
 Conc: 510.58 ng/ml



#22 AR-1248-2

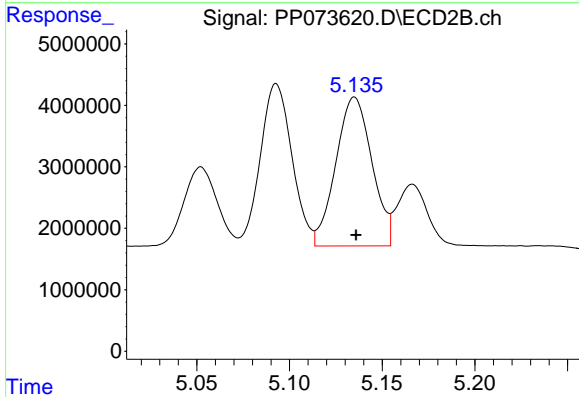
R.T.: 5.093 min
 Delta R.T.: -0.001 min
 Response: 31399969
 Conc: 510.27 ng/ml



#23 AR-1248-3

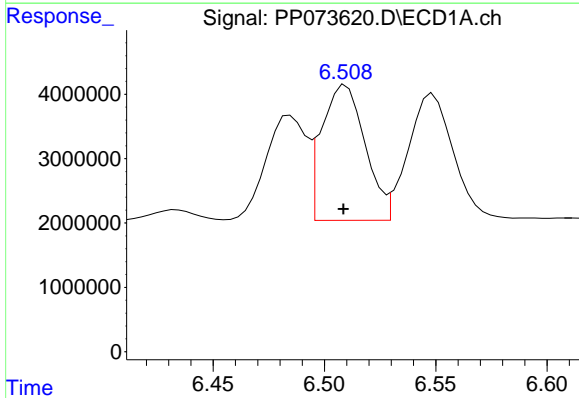
R.T.: 6.111 min
 Delta R.T.: 0.002 min
 Response: 23146000
 Conc: 521.19 ng/ml

Instrument :
 ECD_P
 ClientSampleId :
 AR1248CCC500



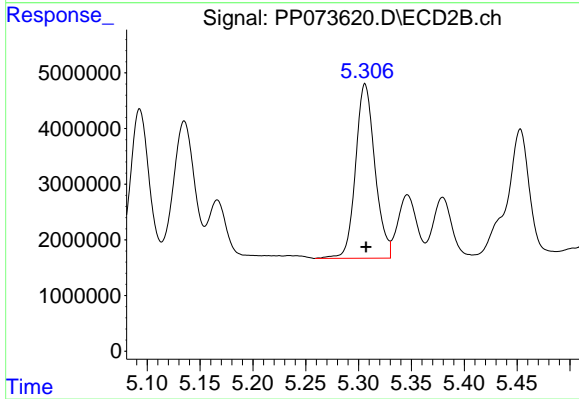
#23 AR-1248-3

R.T.: 5.135 min
 Delta R.T.: 0.000 min
 Response: 32860782
 Conc: 512.93 ng/ml



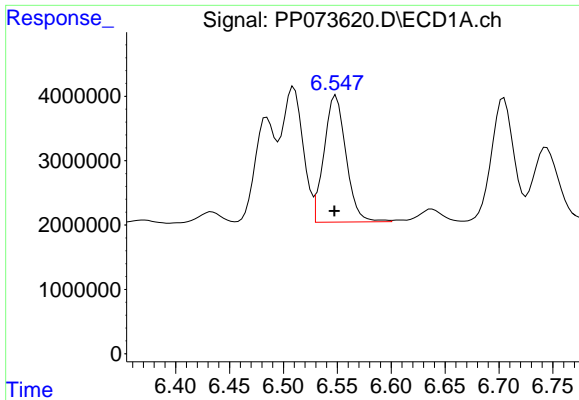
#24 AR-1248-4

R.T.: 6.510 min
 Delta R.T.: 0.001 min
 Response: 28640432
 Conc: 519.97 ng/ml



#24 AR-1248-4

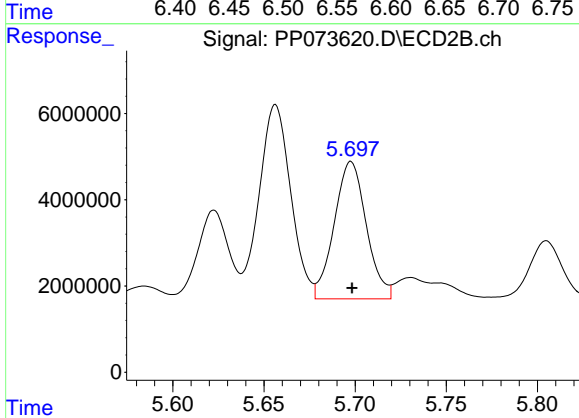
R.T.: 5.306 min
 Delta R.T.: -0.001 min
 Response: 39935019
 Conc: 529.80 ng/ml



#25 AR-1248-5

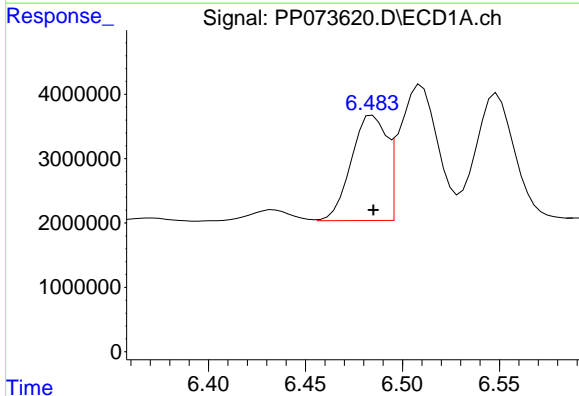
R.T.: 6.549 min
 Delta R.T.: 0.002 min
 Response: 27901447
 Conc: 518.70 ng/ml

Instrument :
 ECD_P
 ClientSampleId :
 AR1248CCC500



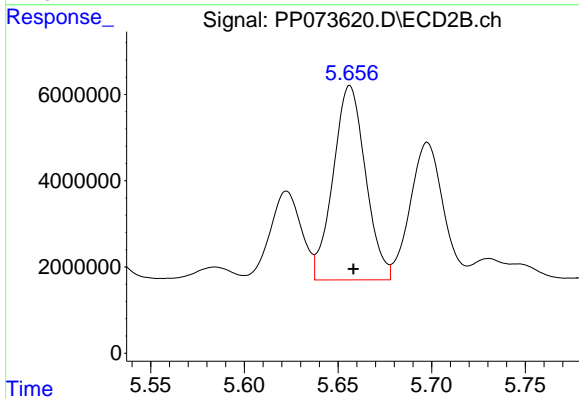
#25 AR-1248-5

R.T.: 5.698 min
 Delta R.T.: 0.000 min
 Response: 39158296
 Conc: 524.97 ng/ml



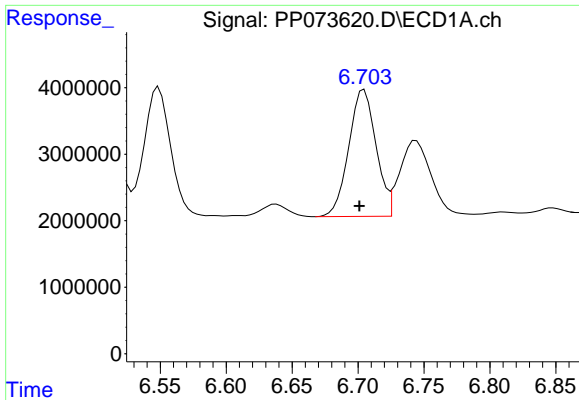
#26 AR-1254-1

R.T.: 6.485 min
 Delta R.T.: 0.000 min
 Response: 20692134
 Conc: 386.12 ng/ml



#26 AR-1254-1

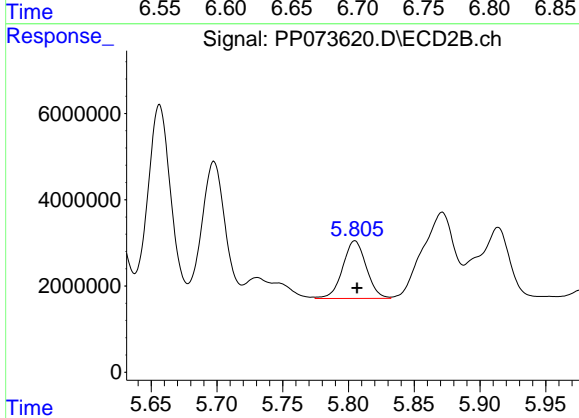
R.T.: 5.656 min
 Delta R.T.: -0.002 min
 Response: 54286908
 Conc: 467.87 ng/ml



#27 AR-1254-2

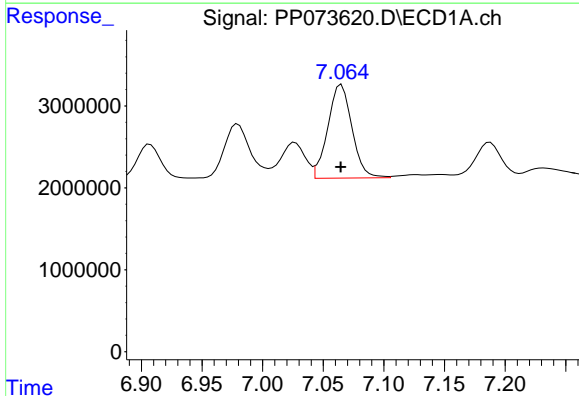
R.T.: 6.705 min
 Delta R.T.: 0.003 min
 Response: 27396456
 Conc: 328.93 ng/ml

Instrument :
 ECD_P
 ClientSampleId :
 AR1248CCC500



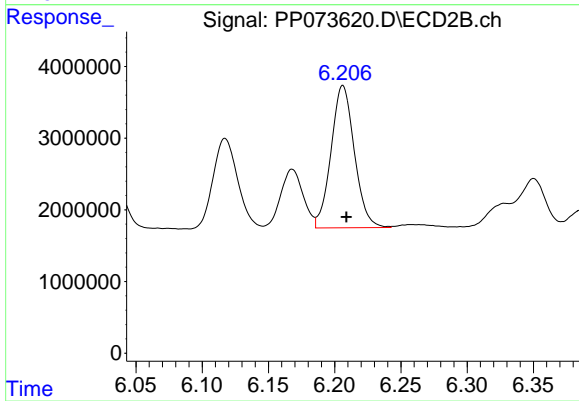
#27 AR-1254-2

R.T.: 5.805 min
 Delta R.T.: -0.002 min
 Response: 16729933
 Conc: 166.26 ng/ml



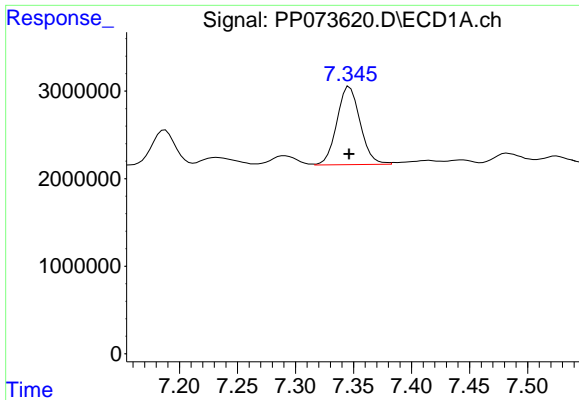
#28 AR-1254-3

R.T.: 7.065 min
 Delta R.T.: 0.000 min
 Response: 15828579
 Conc: 179.19 ng/ml



#28 AR-1254-3

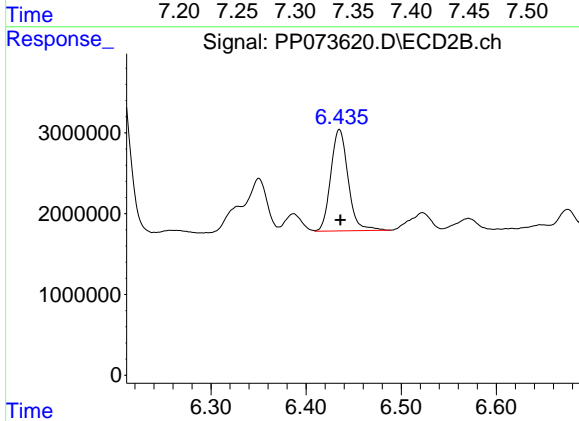
R.T.: 6.206 min
 Delta R.T.: -0.003 min
 Response: 24344618
 Conc: 157.62 ng/ml



#29 AR-1254-4

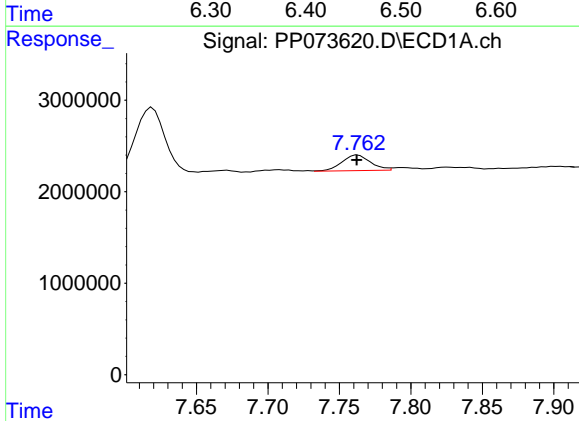
R.T.: 7.347 min
 Delta R.T.: 0.000 min
 Response: 12433827
 Conc: 158.06 ng/ml

Instrument :
 ECD_P
 ClientSampleId :
 AR1248CCC500



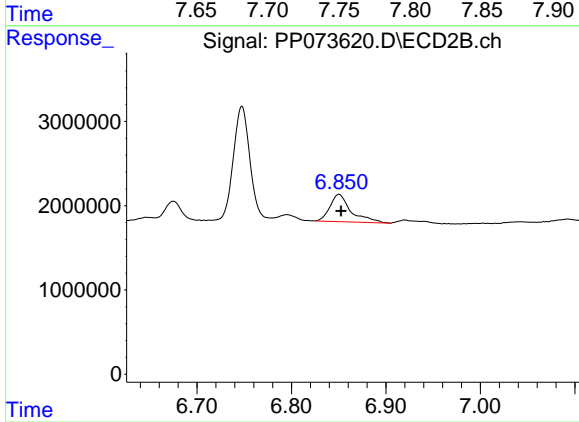
#29 AR-1254-4

R.T.: 6.435 min
 Delta R.T.: -0.001 min
 Response: 15916893
 Conc: 168.33 ng/ml



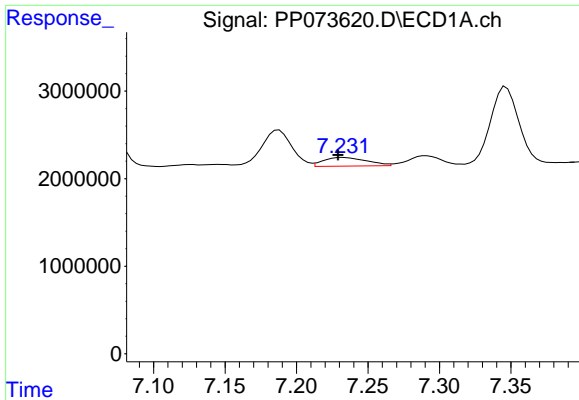
#30 AR-1254-5

R.T.: 7.763 min
 Delta R.T.: 0.000 min
 Response: 2372000
 Conc: 32.19 ng/ml



#30 AR-1254-5

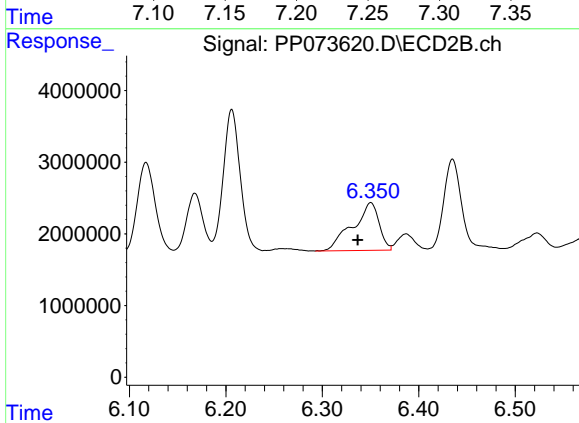
R.T.: 6.850 min
 Delta R.T.: -0.002 min
 Response: 5026624
 Conc: 37.67 ng/ml



#31 AR-1260-1

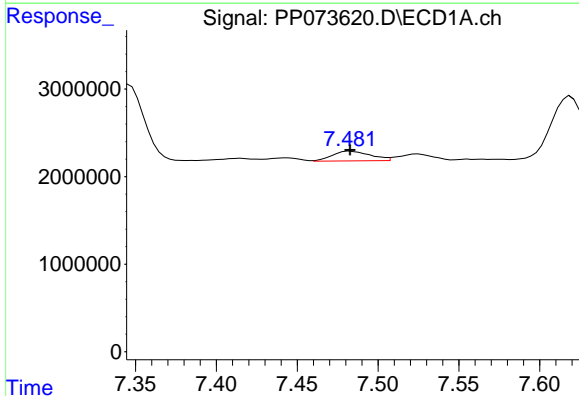
R.T.: 7.232 min
 Delta R.T.: 0.003 min
 Response: 2069339
 Conc: 35.10 ng/ml

Instrument :
 ECD_P
 ClientSampleId :
 AR1248CCC500



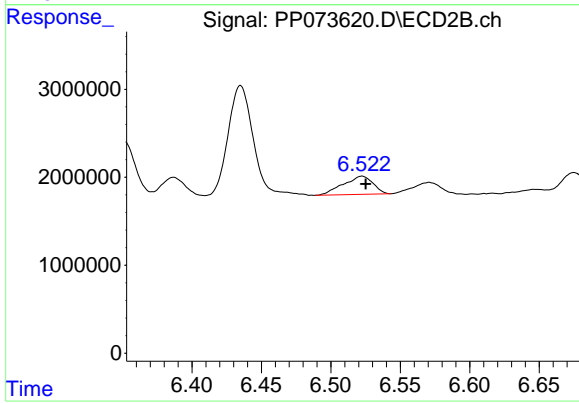
#31 AR-1260-1

R.T.: 6.350 min
 Delta R.T.: 0.014 min
 Response: 12635502
 Conc: 129.51 ng/ml



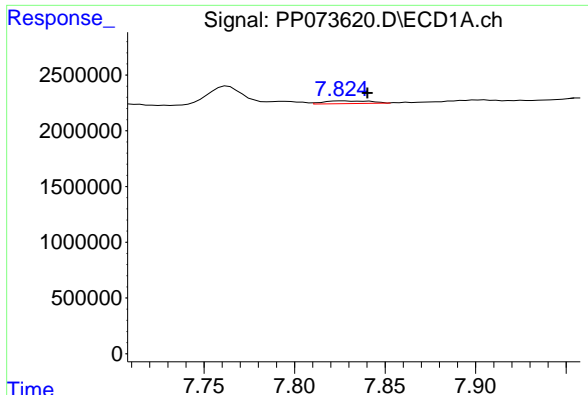
#32 AR-1260-2

R.T.: 7.483 min
 Delta R.T.: 0.000 min
 Response: 1801863
 Conc: 18.80 ng/ml



#32 AR-1260-2

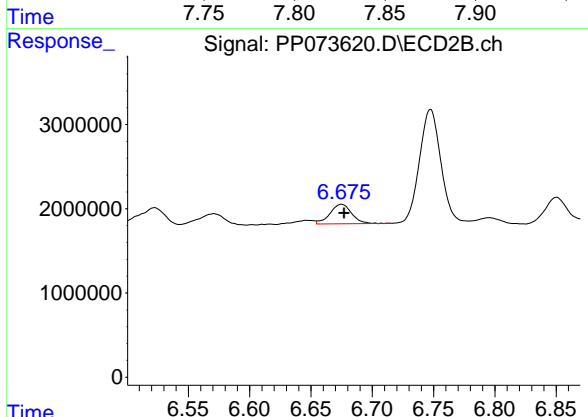
R.T.: 6.522 min
 Delta R.T.: -0.003 min
 Response: 3069714
 Conc: 24.99 ng/ml



#33 AR-1260-3

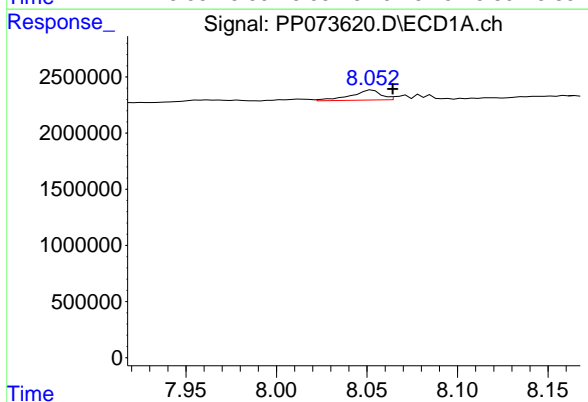
R.T.: 7.826 min
 Delta R.T.: -0.014 min
 Response: 427463
 Conc: 5.85 ng/ml

Instrument :
 ECD_P
 ClientSampleId :
 AR1248CCC500



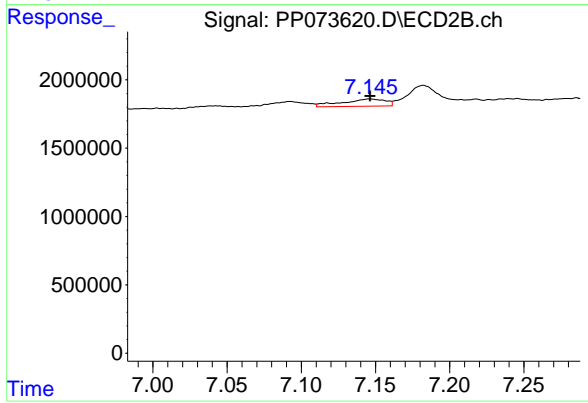
#33 AR-1260-3

R.T.: 6.675 min
 Delta R.T.: -0.002 min
 Response: 2861776
 Conc: 26.14 ng/ml



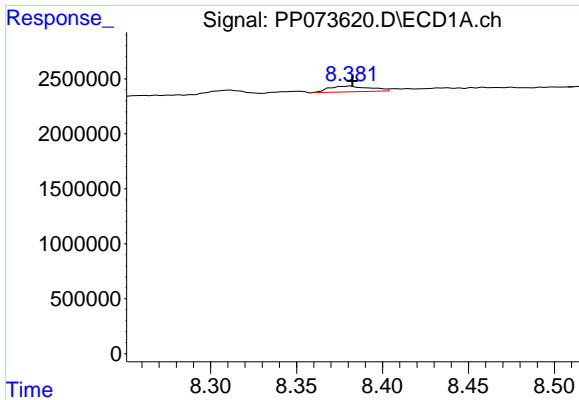
#34 AR-1260-4

R.T.: 8.053 min
 Delta R.T.: -0.011 min
 Response: 1023897
 Conc: 15.68 ng/ml



#34 AR-1260-4

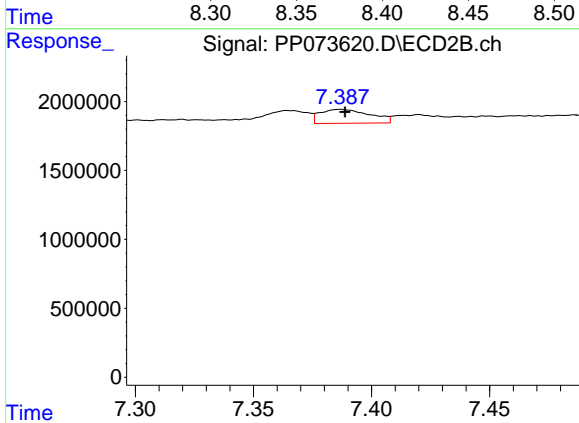
R.T.: 7.146 min
 Delta R.T.: 0.000 min
 Response: 1091266
 Conc: 12.21 ng/ml



#35 AR-1260-5

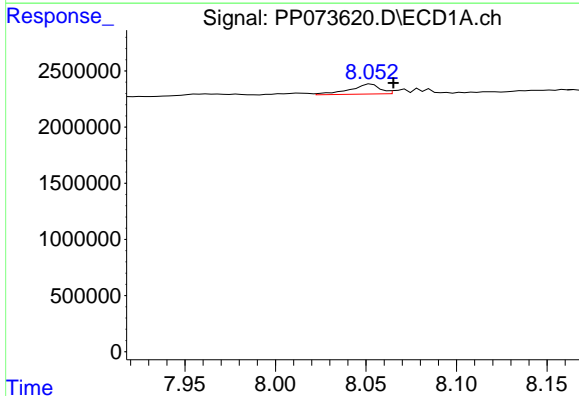
R.T.: 8.382 min
 Delta R.T.: 0.000 min
 Response: 856673
 Conc: 5.68 ng/ml

Instrument :
 ECD_P
 ClientSampleId :
 AR1248CCC500



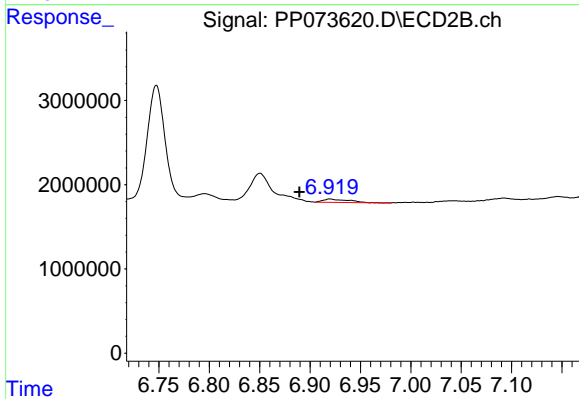
#35 AR-1260-5

R.T.: 7.387 min
 Delta R.T.: -0.002 min
 Response: 1493686
 Conc: 6.65 ng/ml



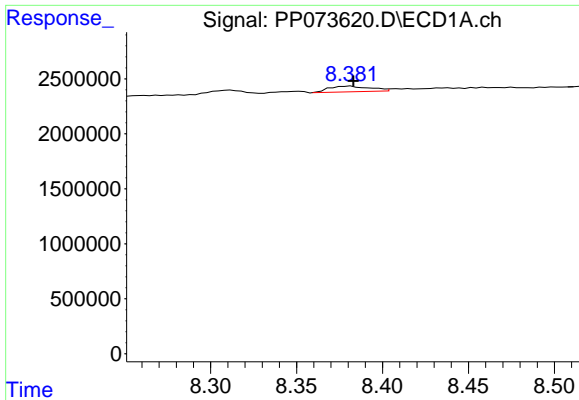
#36 AR-1262-1

R.T.: 8.053 min
 Delta R.T.: -0.012 min
 Response: 1023897
 Conc: 11.77 ng/ml



#36 AR-1262-1

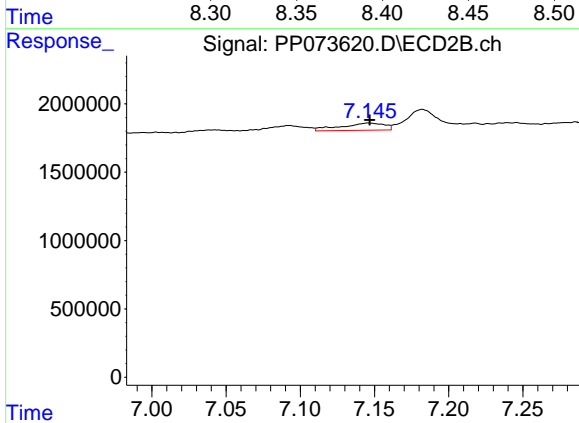
R.T.: 6.920 min
 Delta R.T.: 0.031 min
 Response: 655120
 Conc: 4.44 ng/ml



#37 AR-1262-2

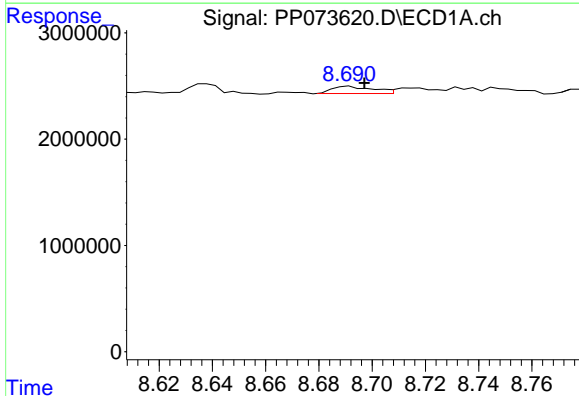
R.T.: 8.382 min
 Delta R.T.: -0.001 min
 Response: 856673
 Conc: 4.33 ng/ml

Instrument :
 ECD_P
 ClientSampleId :
 AR1248CCC500



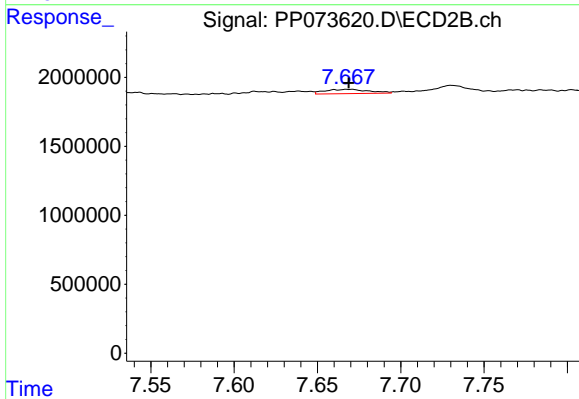
#37 AR-1262-2

R.T.: 7.146 min
 Delta R.T.: 0.000 min
 Response: 1091266
 Conc: 8.54 ng/ml



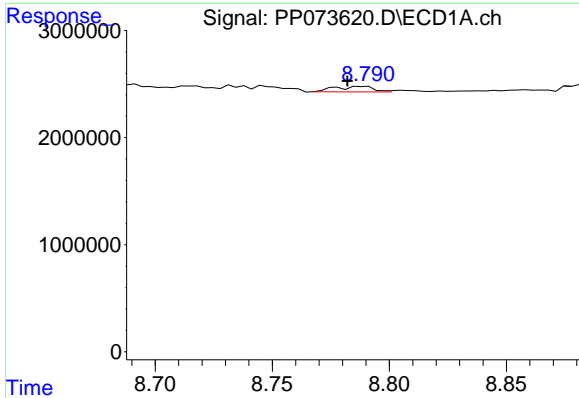
#38 AR-1262-3

R.T.: 8.692 min
 Delta R.T.: -0.005 min
 Response: 721732
 Conc: 5.74 ng/ml



#38 AR-1262-3

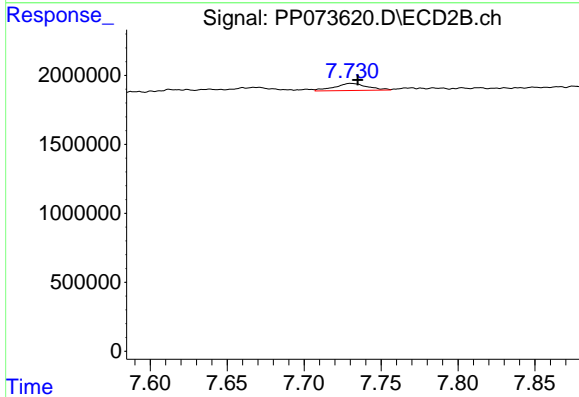
R.T.: 7.669 min
 Delta R.T.: 0.000 min
 Response: 574606
 Conc: 5.04 ng/ml



#39 AR-1262-4

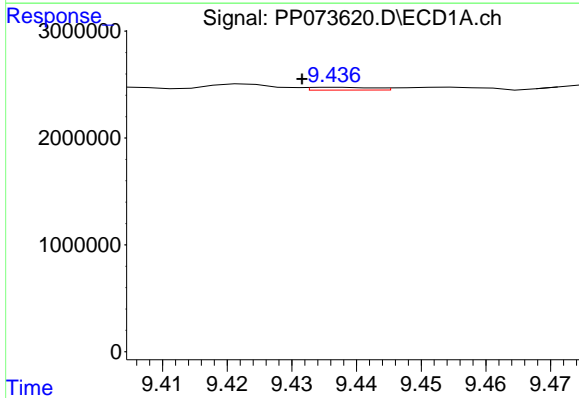
R.T.: 8.788 min
 Delta R.T.: 0.006 min
 Response: 601862
 Conc: 6.45 ng/ml

Instrument :
 ECD_P
 ClientSampleId :
 AR1248CCC500



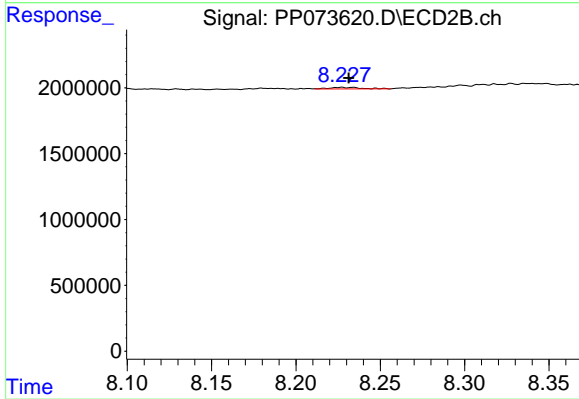
#39 AR-1262-4

R.T.: 7.731 min
 Delta R.T.: -0.004 min
 Response: 750857
 Conc: 4.08 ng/ml



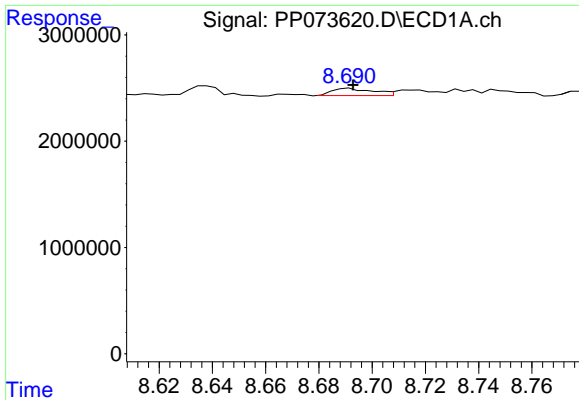
#40 AR-1262-5

R.T.: 9.437 min
 Delta R.T.: 0.006 min
 Response: 179832
 Conc: 2.84 ng/ml



#40 AR-1262-5

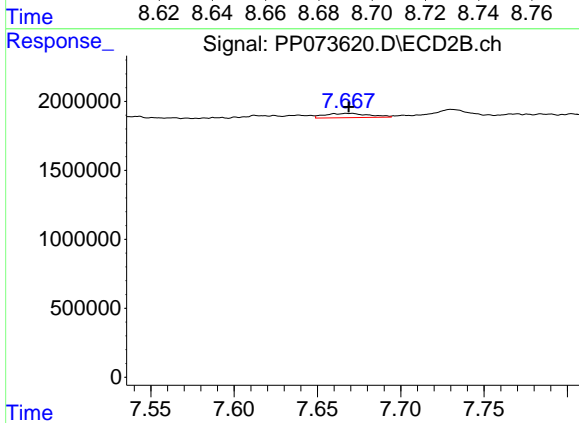
R.T.: 8.227 min
 Delta R.T.: -0.004 min
 Response: 163936
 Conc: 1.94 ng/ml



#41 AR-1268-1

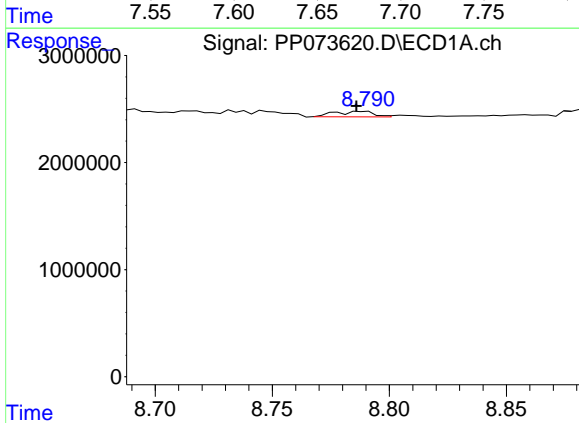
R.T.: 8.692 min
 Delta R.T.: -0.001 min
 Response: 721732
 Conc: 3.23 ng/ml

Instrument :
 ECD_P
 ClientSampleId :
 AR1248CCC500



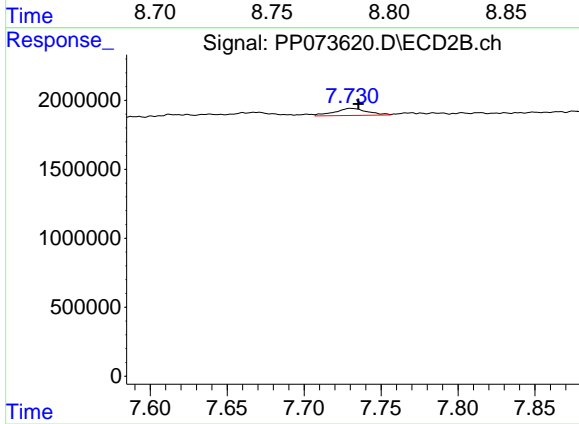
#41 AR-1268-1

R.T.: 7.669 min
 Delta R.T.: 0.000 min
 Response: 574606
 Conc: 1.87 ng/ml



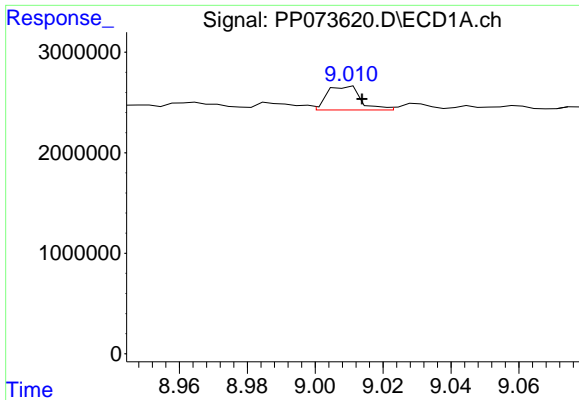
#42 AR-1268-2

R.T.: 8.788 min
 Delta R.T.: 0.002 min
 Response: 601862
 Conc: 3.16 ng/ml



#42 AR-1268-2

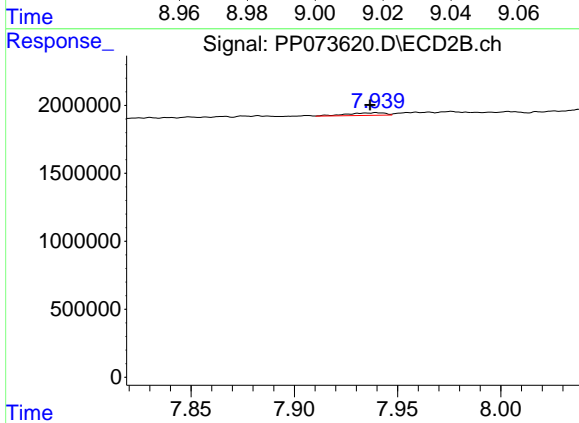
R.T.: 7.731 min
 Delta R.T.: -0.005 min
 Response: 750857
 Conc: 2.83 ng/ml



#43 AR-1268-3

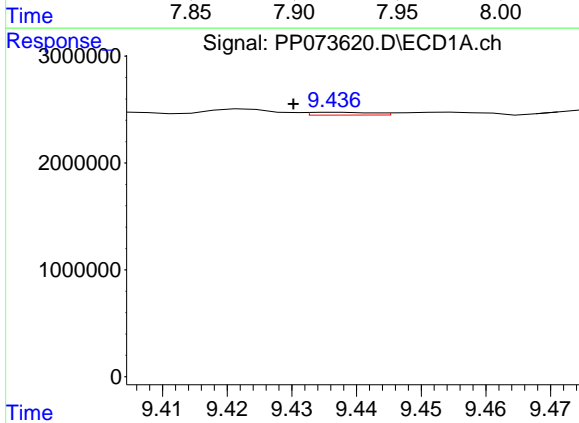
R.T.: 9.009 min
 Delta R.T.: -0.005 min
 Response: 1633433
 Conc: 9.87 ng/ml

Instrument :
 ECD_P
 ClientSampleId :
 AR1248CCC500



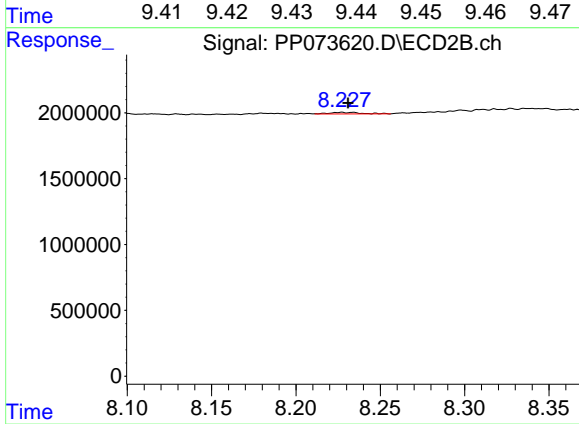
#43 AR-1268-3

R.T.: 7.940 min
 Delta R.T.: 0.003 min
 Response: 232755
 Conc: 1.03 ng/ml



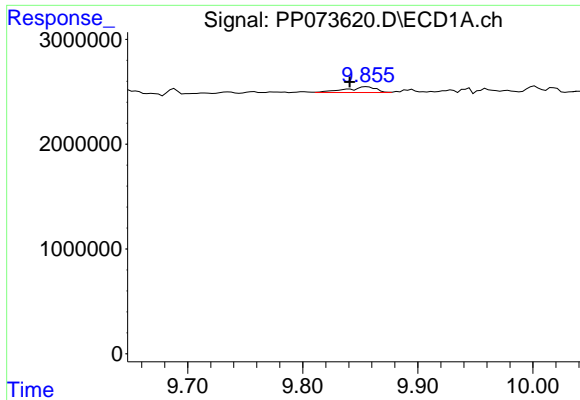
#44 AR-1268-4

R.T.: 9.437 min
 Delta R.T.: 0.007 min
 Response: 179832
 Conc: 2.59 ng/ml



#44 AR-1268-4

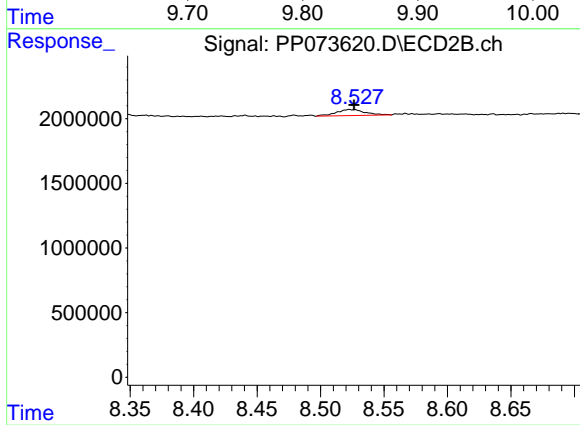
R.T.: 8.227 min
 Delta R.T.: -0.004 min
 Response: 163936
 Conc: 1.76 ng/ml



#45 AR-1268-5

R.T.: 9.856 min
 Delta R.T.: 0.015 min
 Response: 988670
 Conc: 2.14 ng/ml

Instrument :
 ECD_P
 ClientSampleId :
 AR1248CCC500



#45 AR-1268-5

R.T.: 8.523 min
 Delta R.T.: -0.004 min
 Response: 741502
 Conc: 1.20 ng/ml