

Data Path : Z:\pestpcbsrv\HPCHEM1\ECD\_P\Data\PP070925\  
 Data File : PP073623.D  
 Signal(s) : Signal #1: ECD1A.ch Signal #2: ECD2B.ch  
 Acq On : 08 Jul 2025 20:40  
 Operator : YP\AJ  
 Sample : I.BLK  
 Misc :  
 ALS Vial : 2 Sample Multiplier: 1

Instrument :  
 ECD\_P  
 ClientSampleId :  
 I.BLK

Integration File signal 1: autoint1.e  
 Integration File signal 2: autoint2.e  
 Quant Time: Jul 09 01:45:12 2025  
 Quant Method : Z:\pestpcbsrv\HPCHEM1\ECD\_P\methods\PP070825.M  
 Quant Title : GC EXTRACTABLES  
 QLast Update : Tue Jul 08 08:35:32 2025  
 Response via : Initial Calibration  
 Integrator: ChemStation

Volume Inj. : 2 µl  
 Signal #1 Phase : ZB-MR2 Signal #2 Phase: ZB-MR2  
 Signal #1 Info : 30Mx0.32mmx 0.50µ Signal #2 Info : 30M x 0.32mm x 0.25µm

Compound	RT#1	RT#2	Resp#1	Resp#2	ng/ml	ng/ml
-----						
System Monitoring Compounds						
1) SA Tetrachlo...	4.488	3.780	24785676	32042354	18.098	17.393
2) SA Decachlor...	10.173	8.779	19323557	26547829	17.711	20.064
Target Compounds						
3) L1 AR-1016-1	5.626	4.862	137956	948815	2.903	13.917 #
4) L1 AR-1016-2	5.664	4.870	356626	952063	5.008	9.345 #
5) L1 AR-1016-3	5.727	5.049	77443	1818283	1.774	33.606 #
6) L1 AR-1016-4	5.842	5.098	199402	1273888	5.547	29.031 #
7) L1 AR-1016-5	6.155f	5.302	380650	5980802	12.150	109.574 #
8) L2 AR-1221-1	4.700	3.991	56695	36163	3.173	1.337 #
9) L2 AR-1221-2	4.789	4.081	595012	718299	44.060	35.279
10) L2 AR-1221-3	4.853	4.152	140840	18956	3.385	0.308 #
11) L3 AR-1232-1	4.853	4.152	140840	18956	4.314	0.407 #
12) L3 AR-1232-2	5.371	4.870	25670	952063	1.579	19.976 #
13) L3 AR-1232-3	5.664	5.049	356626	1818283	10.809	72.647 #
14) L3 AR-1232-4	5.842	5.135	199402	1047584	12.125	48.373 #
15) L3 AR-1232-5	5.900	5.302	143525	5980802	13.578	265.066 #
16) L4 AR-1242-1	5.626	4.862	137956	948815	3.613	16.425 #
17) L4 AR-1242-2	5.664	4.870	356626	952063	5.955	11.012 #
18) L4 AR-1242-3	5.727	5.049	77443	1818283	2.115	39.574 #
19) L4 AR-1242-4	5.842	5.135	199402	1047584	6.205	23.667 #
20) L4 AR-1242-5	6.548	5.652	5818181	1583346	177.726	28.662 #
21) L5 AR-1248-1	5.626	4.862	137956	948815	4.469	21.134 #
22) L5 AR-1248-2	5.900	5.098	143525	1273888	3.595	20.701 #
23) L5 AR-1248-3	6.155f	5.135	380650	1047584	8.571	16.352 #
24) L5 AR-1248-4	6.489	5.302	6027690	5980802	109.434	79.345 #
25) L5 AR-1248-5	6.548	5.707	5818181	1459564	108.163	19.568 #
26) L6 AR-1254-1	6.489	5.652	6027690	1583346	112.479	13.646 #
27) L6 AR-1254-2	6.692	5.798	4806756	1671853	57.712	16.615 #
28) L6 AR-1254-3	7.064	6.206	14449961	582814	163.588	3.774 #
29) L6 AR-1254-4	7.388f	6.453	8330687	819075	105.898	8.662 #
30) L6 AR-1254-5	7.776	6.890f	1147464	253472	15.574	1.899 #
31) L7 AR-1260-1	7.207	6.339	10431565	814481	176.922	8.348 #
32) L7 AR-1260-2	7.497	6.509	5240120	9662286	54.676	78.659 #
33) L7 AR-1260-3	7.868	6.698	4153889	38227	56.848	0.349 #
34) L7 AR-1260-4	8.075	7.145	1061880	291253	16.262	3.258 #
35) L7 AR-1260-5	8.388	7.394	606069	613190	4.018	2.728 #
36) L8 AR-1262-1	8.075	6.890	1061880	253472	12.202	1.716 #
37) L8 AR-1262-2	8.388	7.145	606069	291253	3.061	2.278 #
38) L8 AR-1262-3	8.702	7.699	185098	2532501	1.472	22.211 #
39) L8 AR-1262-4	8.771	7.761	166220	165227	1.782	0.898 #
40) L8 AR-1262-5	9.430	8.264	121836	103389	1.922	1.224 #
41) L9 AR-1268-1	8.702	7.699	185098	2532501	0.829	8.239 #

Data Path : Z:\pestpcbsrv\HPCHEM1\ECD\_P\Data\PP070925\  
 Data File : PP073623.D  
 Signal(s) : Signal #1: ECD1A.ch Signal #2: ECD2B.ch  
 Acq On : 08 Jul 2025 20:40  
 Operator : YP\AJ  
 Sample : I.BLK  
 Misc :  
 ALS Vial : 2 Sample Multiplier: 1

Instrument :  
 ECD\_P  
 ClientSampleId :  
 I.BLK

Integration File signal 1: autoint1.e  
 Integration File signal 2: autoint2.e  
 Quant Time: Jul 09 01:45:12 2025  
 Quant Method : Z:\pestpcbsrv\HPCHEM1\ECD\_P\methods\PP070825.M  
 Quant Title : GC EXTRACTABLES  
 QLast Update : Tue Jul 08 08:35:32 2025  
 Response via : Initial Calibration  
 Integrator: ChemStation

Volume Inj. : 2 µl  
 Signal #1 Phase : ZB-MR1 Signal #2 Phase: ZB-MR2  
 Signal #1 Info : 30Mx0.32mmx 0.50µ Signal #2 Info : 30M x 0.32mm x 0.25µm

	Compound	RT#1	RT#2	Resp#1	Resp#2	ng/ml	ng/ml
42)	L9 AR-1268-2	8.771	7.761	166220	165227	0.873	0.622 #
43)	L9 AR-1268-3	9.005	7.938	517536	130370	3.126	0.578 #
44)	L9 AR-1268-4	9.430	8.264	121836	103389	1.752	1.112 #
45)	L9 AR-1268-5	9.839	8.522	259843	445105	0.564	0.722 #

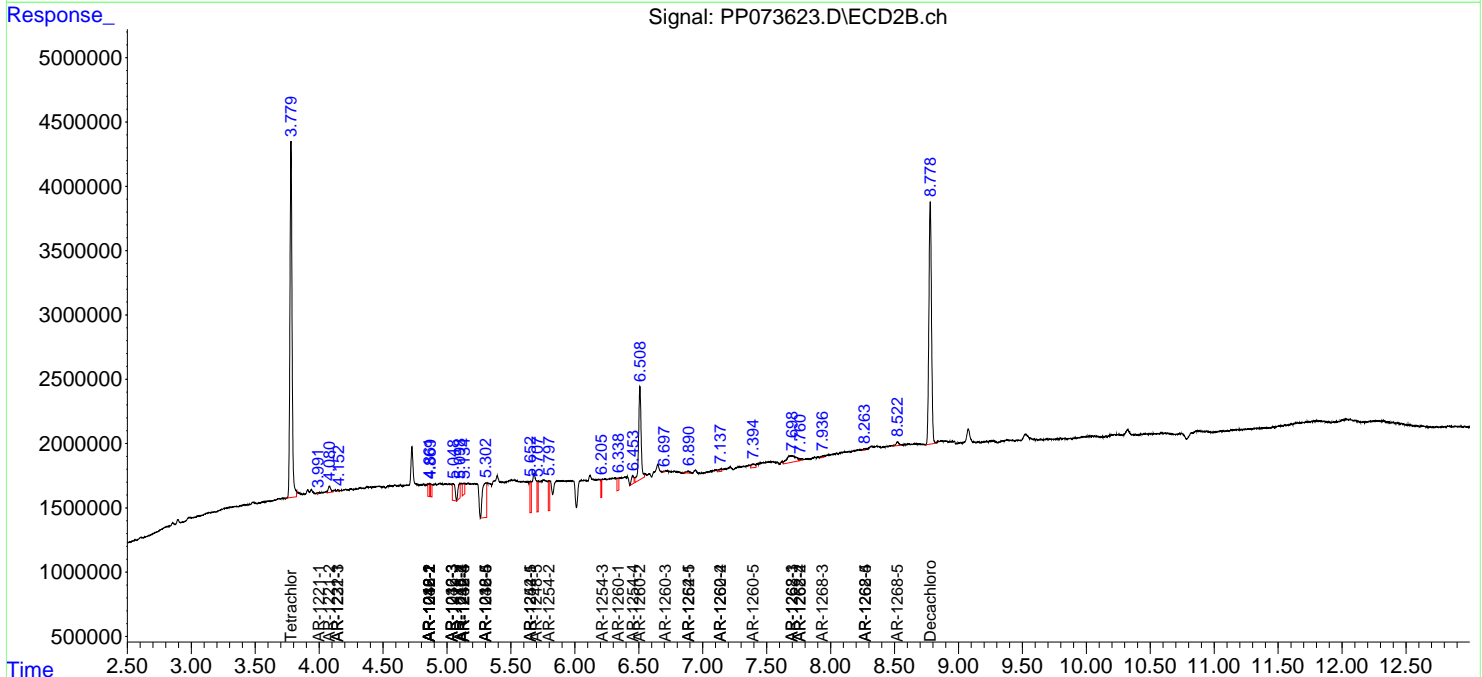
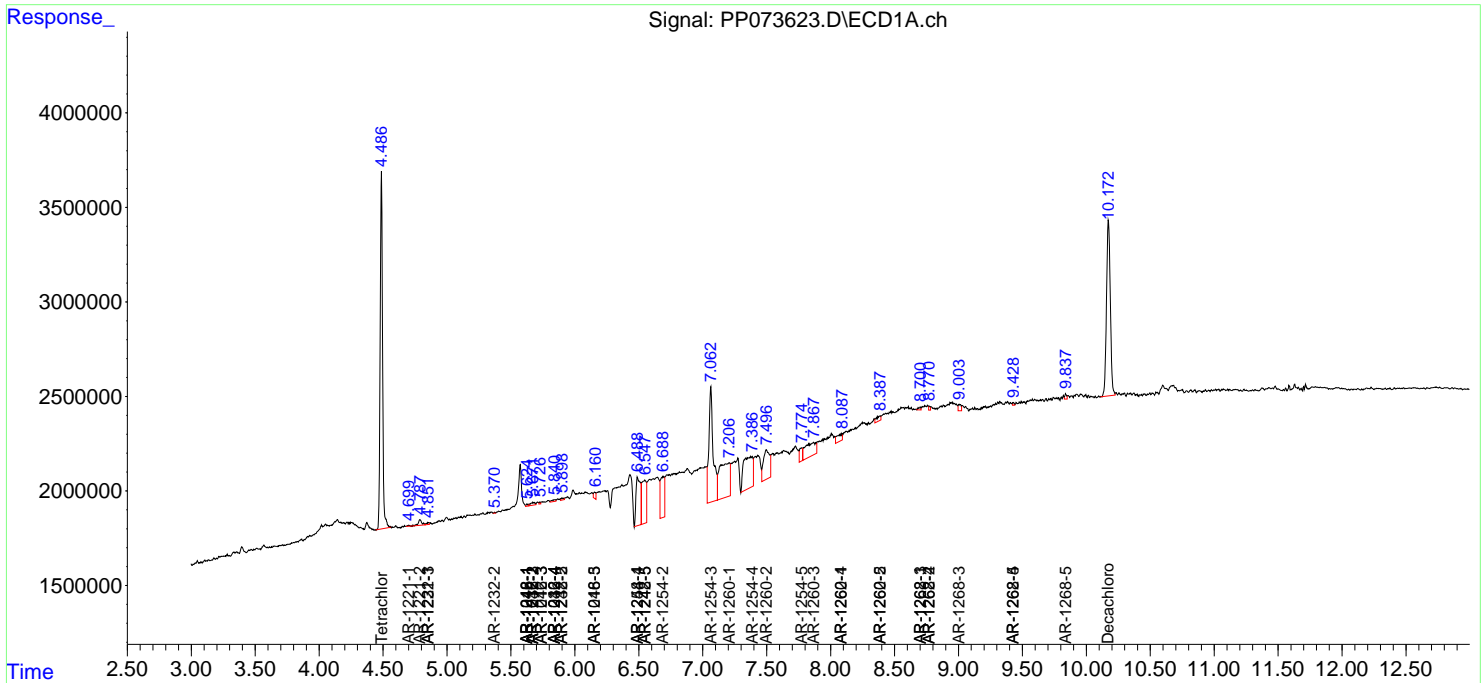
(f)=RT Delta > 1/2 Window (#)=Amounts differ by > 25% (m)=manual int.

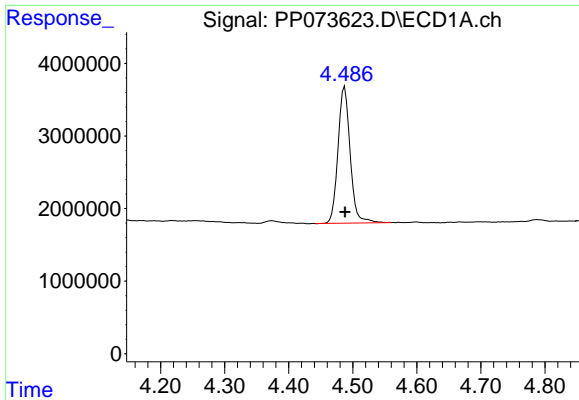
Data Path : Z:\pestpcbsrv\HPCHEM1\ECD\_P\Data\PP070925\  
 Data File : PP073623.D  
 Signal(s) : Signal #1: ECD1A.ch Signal #2: ECD2B.ch  
 Acq On : 08 Jul 2025 20:40  
 Operator : YP\AJ  
 Sample : I.BLK  
 Misc :  
 ALS Vial : 2 Sample Multiplier: 1

**Instrument :**  
 ECD\_P  
**ClientSampleId :**  
 I.BLK

Integration File signal 1: autoint1.e  
 Integration File signal 2: autoint2.e  
 Quant Time: Jul 09 01:45:12 2025  
 Quant Method : Z:\pestpcbsrv\HPCHEM1\ECD\_P\methods\PP070825.M  
 Quant Title : GC EXTRACTABLES  
 QLast Update : Tue Jul 08 08:35:32 2025  
 Response via : Initial Calibration  
 Integrator: ChemStation

Volume Inj. : 2 µl  
 Signal #1 Phase : ZB-MR1 Signal #2 Phase: ZB-MR2  
 Signal #1 Info : 30Mx0.32mmx 0.50µ Signal #2 Info : 30M x 0.32mm x 0.25µm

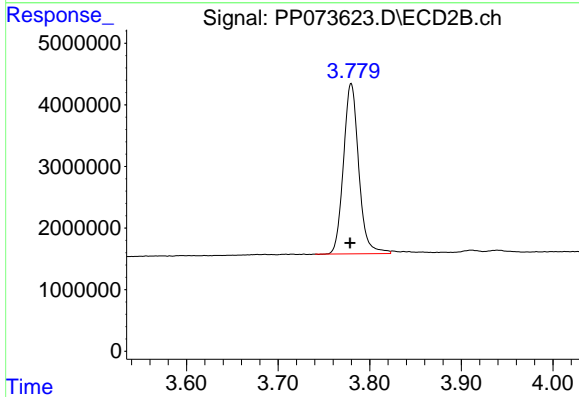




#1 Tetrachloro-m-xylene

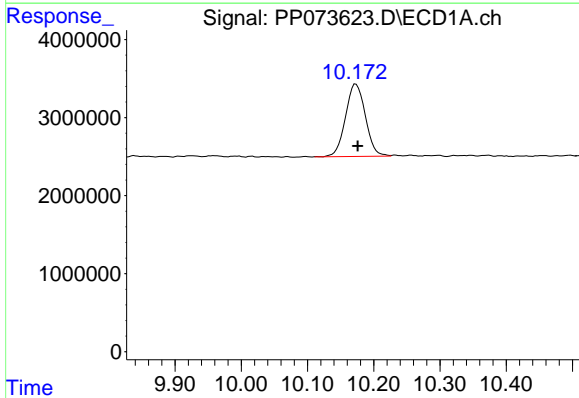
R.T.: 4.488 min  
 Delta R.T.: 0.000 min  
 Response: 24785676  
 Conc: 18.10 ng/ml

Instrument :  
 ECD\_P  
 ClientSampleId :  
 I.BLK



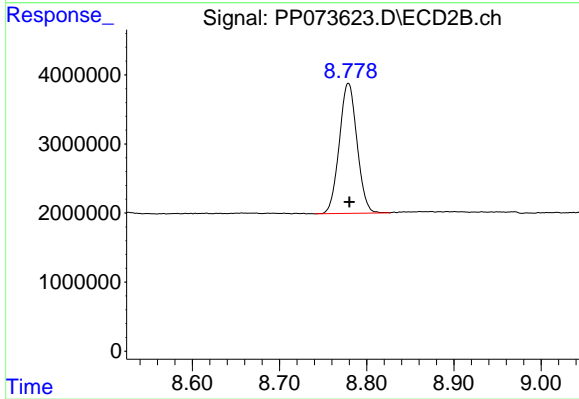
#1 Tetrachloro-m-xylene

R.T.: 3.780 min  
 Delta R.T.: 0.001 min  
 Response: 32042354  
 Conc: 17.39 ng/ml



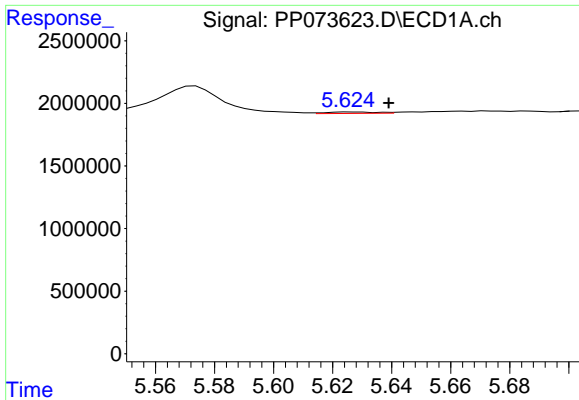
#2 Decachlorobiphenyl

R.T.: 10.173 min  
 Delta R.T.: -0.003 min  
 Response: 19323557  
 Conc: 17.71 ng/ml



#2 Decachlorobiphenyl

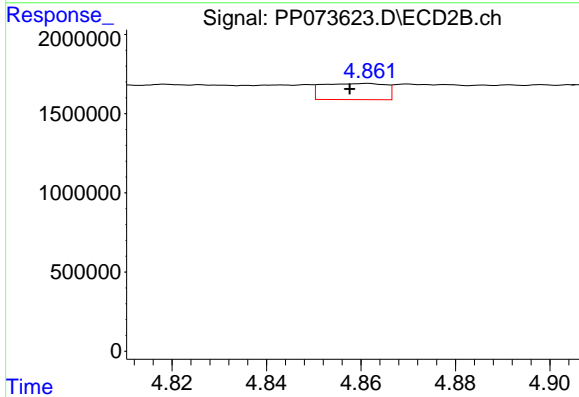
R.T.: 8.779 min  
 Delta R.T.: -0.001 min  
 Response: 26547829  
 Conc: 20.06 ng/ml



#3 AR-1016-1

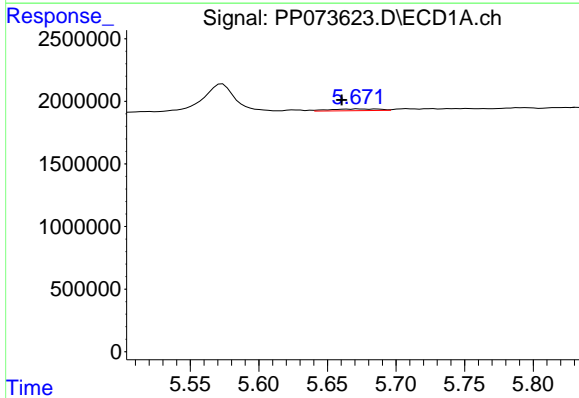
R.T.: 5.626 min  
 Delta R.T.: -0.013 min  
 Response: 137956  
 Conc: 2.90 ng/ml

Instrument :  
 ECD\_P  
 ClientSampleId :  
 I.BLK



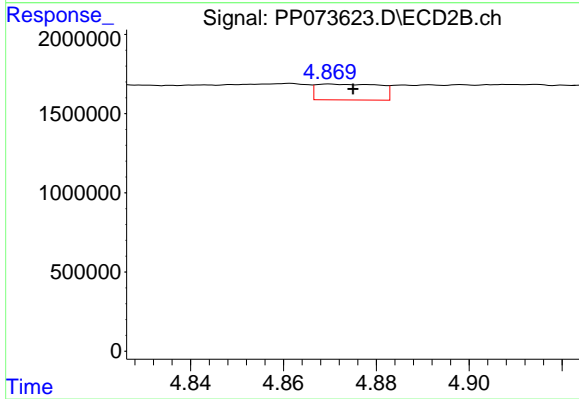
#3 AR-1016-1

R.T.: 4.862 min  
 Delta R.T.: 0.004 min  
 Response: 948815  
 Conc: 13.92 ng/ml



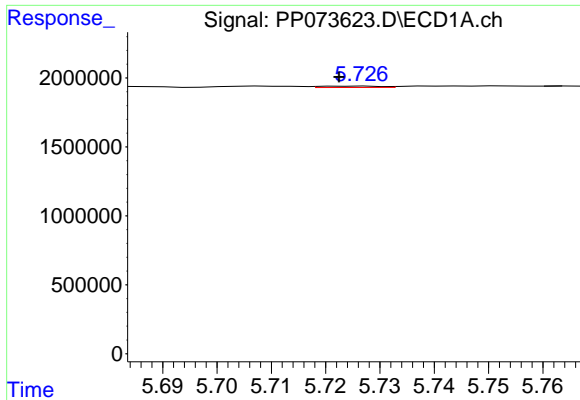
#4 AR-1016-2

R.T.: 5.664 min  
 Delta R.T.: 0.004 min  
 Response: 356626  
 Conc: 5.01 ng/ml



#4 AR-1016-2

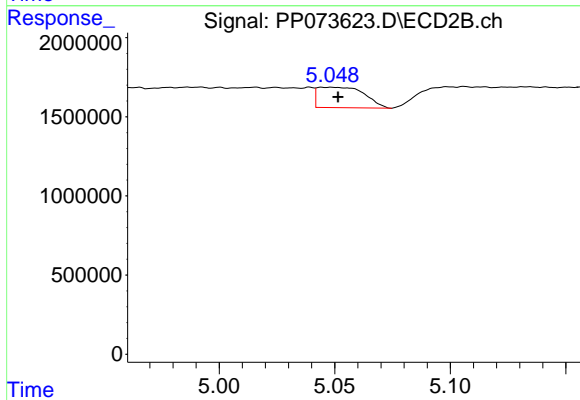
R.T.: 4.870 min  
 Delta R.T.: -0.005 min  
 Response: 952063  
 Conc: 9.34 ng/ml



#5 AR-1016-3

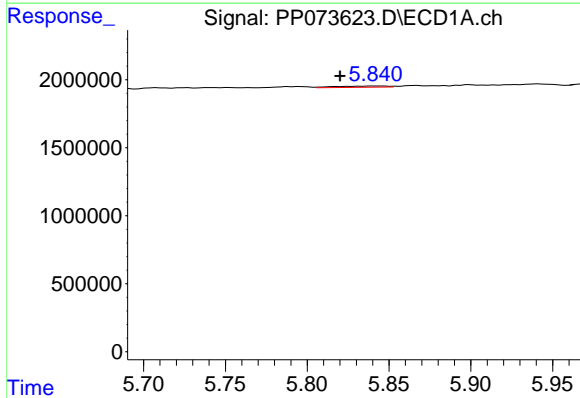
R.T.: 5.727 min  
 Delta R.T.: 0.004 min  
 Response: 77443  
 Conc: 1.77 ng/ml

Instrument :  
 ECD\_P  
 ClientSampleId :  
 I.BLK



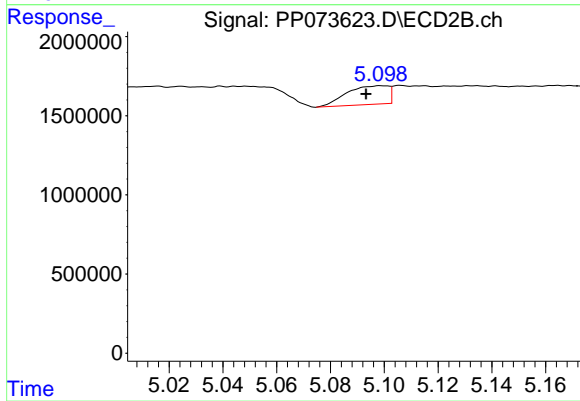
#5 AR-1016-3

R.T.: 5.049 min  
 Delta R.T.: -0.003 min  
 Response: 1818283  
 Conc: 33.61 ng/ml



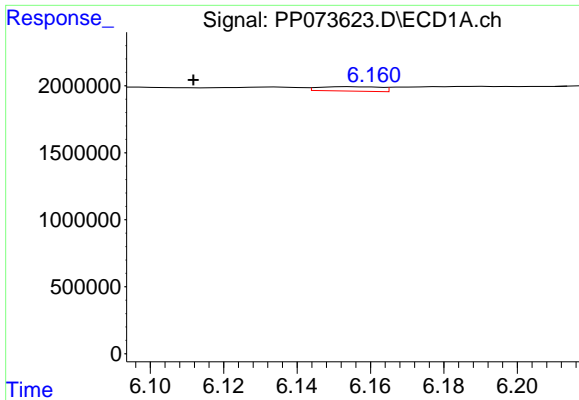
#6 AR-1016-4

R.T.: 5.842 min  
 Delta R.T.: 0.022 min  
 Response: 199402  
 Conc: 5.55 ng/ml



#6 AR-1016-4

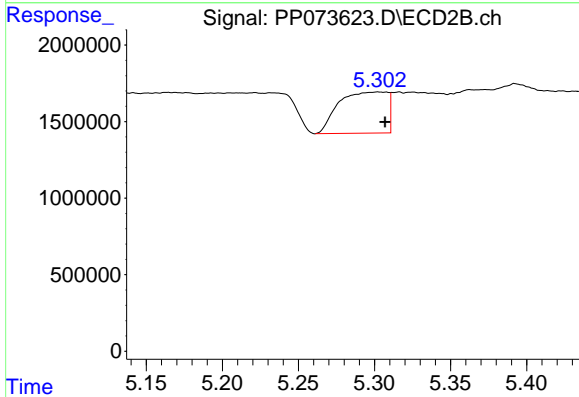
R.T.: 5.098 min  
 Delta R.T.: 0.005 min  
 Response: 1273888  
 Conc: 29.03 ng/ml



#7 AR-1016-5

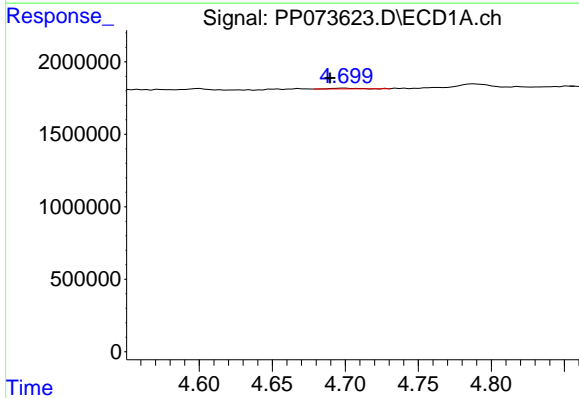
R.T.: 6.155 min  
 Delta R.T.: 0.043 min  
 Response: 380650  
 Conc: 12.15 ng/ml

Instrument :  
 ECD\_P  
 ClientSampleId :  
 I.BLK



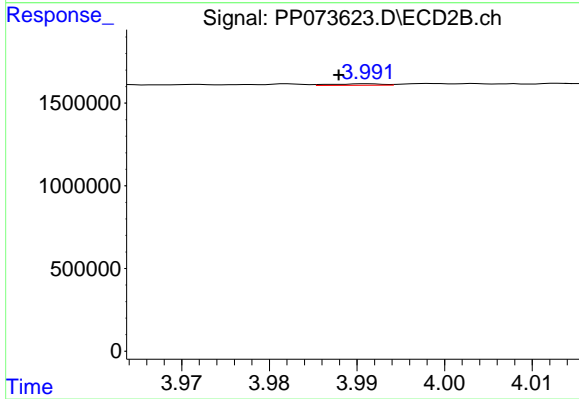
#7 AR-1016-5

R.T.: 5.302 min  
 Delta R.T.: -0.005 min  
 Response: 5980802  
 Conc: 109.57 ng/ml



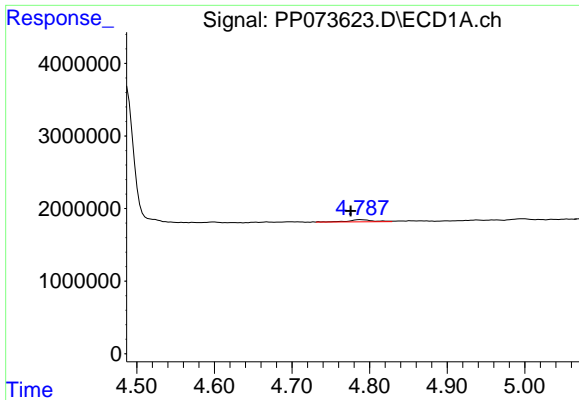
#8 AR-1221-1

R.T.: 4.700 min  
 Delta R.T.: 0.010 min  
 Response: 56695  
 Conc: 3.17 ng/ml



#8 AR-1221-1

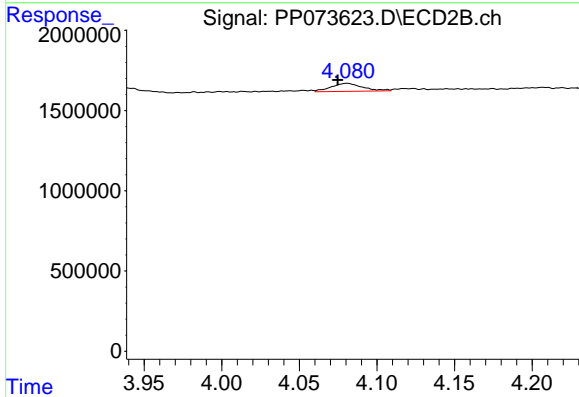
R.T.: 3.991 min  
 Delta R.T.: 0.003 min  
 Response: 36163  
 Conc: 1.34 ng/ml



#9 AR-1221-2

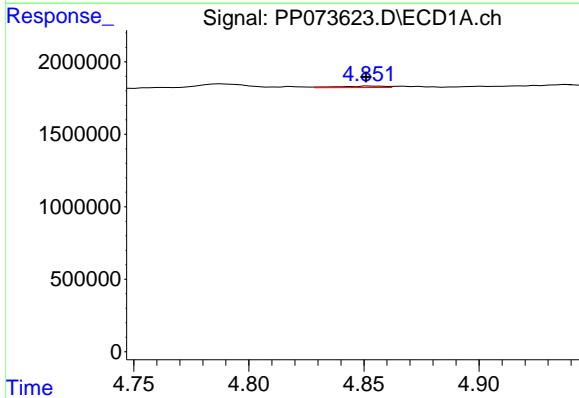
R.T.: 4.789 min  
 Delta R.T.: 0.013 min  
 Response: 595012  
 Conc: 44.06 ng/ml

Instrument :  
 ECD\_P  
 ClientSampleId :  
 I.BLK



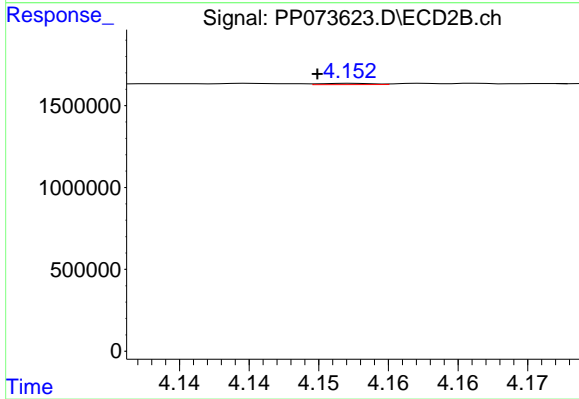
#9 AR-1221-2

R.T.: 4.081 min  
 Delta R.T.: 0.006 min  
 Response: 718299  
 Conc: 35.28 ng/ml



#10 AR-1221-3

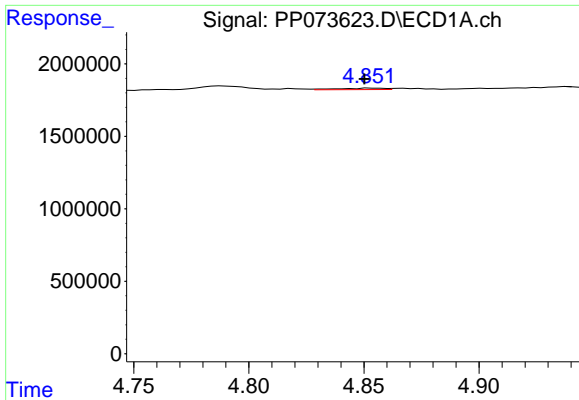
R.T.: 4.853 min  
 Delta R.T.: 0.002 min  
 Response: 140840  
 Conc: 3.39 ng/ml



#10 AR-1221-3

R.T.: 4.152 min  
 Delta R.T.: 0.003 min  
 Response: 18956  
 Conc: 0.31 ng/ml

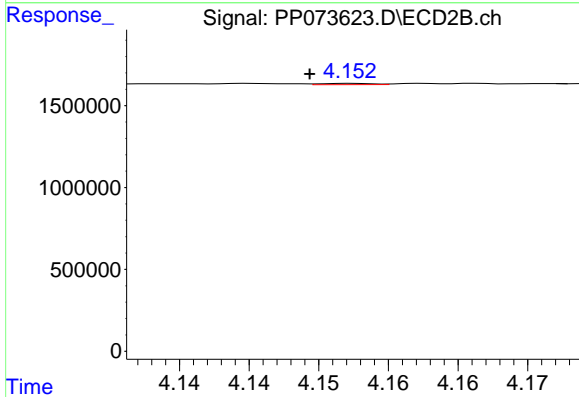




#11 AR-1232-1

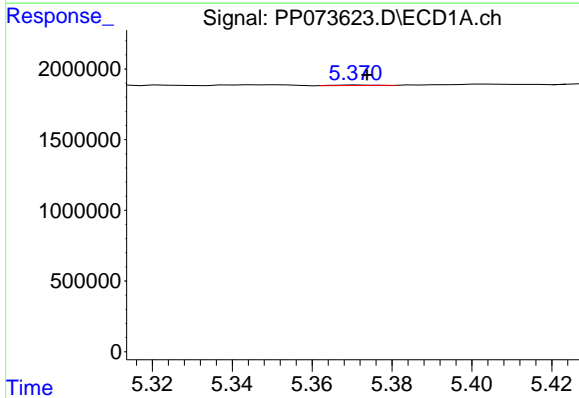
R.T.: 4.853 min  
 Delta R.T.: 0.003 min  
 Response: 140840  
 Conc: 4.31 ng/ml

Instrument :  
 ECD\_P  
 ClientSampleId :  
 I.BLK



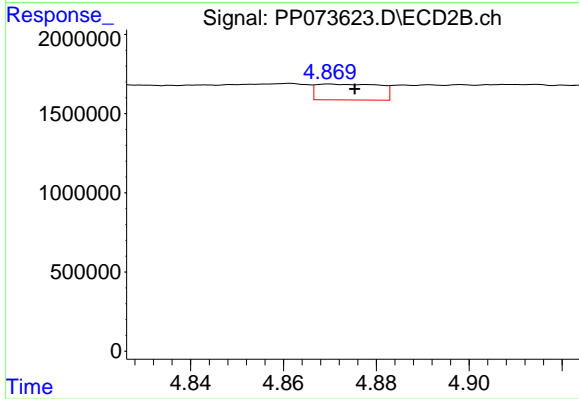
#11 AR-1232-1

R.T.: 4.152 min  
 Delta R.T.: 0.003 min  
 Response: 18956  
 Conc: 0.41 ng/ml



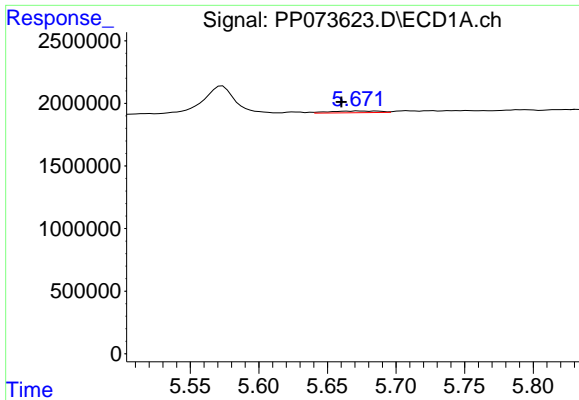
#12 AR-1232-2

R.T.: 5.371 min  
 Delta R.T.: -0.002 min  
 Response: 25670  
 Conc: 1.58 ng/ml



#12 AR-1232-2

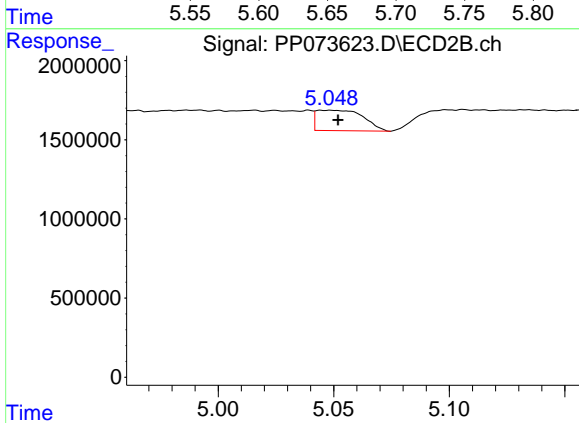
R.T.: 4.870 min  
 Delta R.T.: -0.006 min  
 Response: 952063  
 Conc: 19.98 ng/ml



#13 AR-1232-3

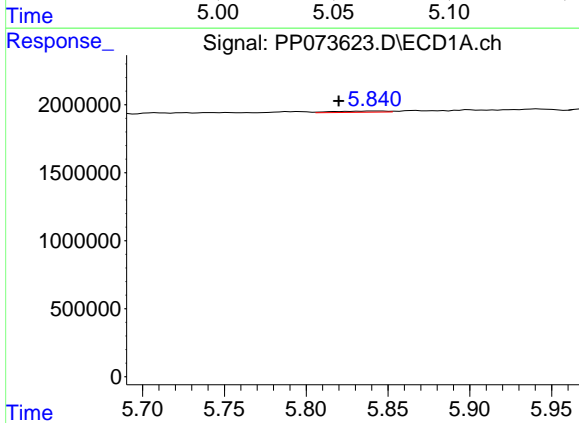
R.T.: 5.664 min  
 Delta R.T.: 0.004 min  
 Response: 356626  
 Conc: 10.81 ng/ml

Instrument :  
 ECD\_P  
 ClientSampleId :  
 I.BLK



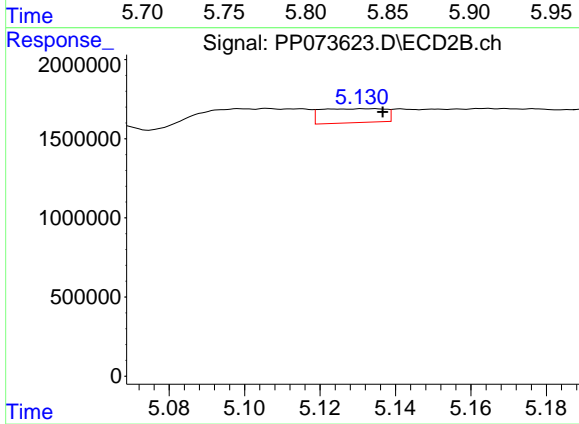
#13 AR-1232-3

R.T.: 5.049 min  
 Delta R.T.: -0.003 min  
 Response: 1818283  
 Conc: 72.65 ng/ml



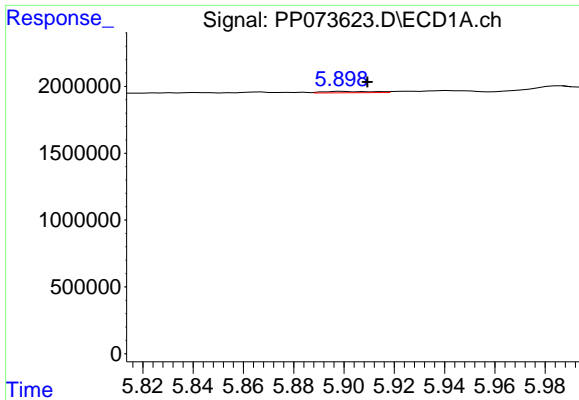
#14 AR-1232-4

R.T.: 5.842 min  
 Delta R.T.: 0.022 min  
 Response: 199402  
 Conc: 12.13 ng/ml



#14 AR-1232-4

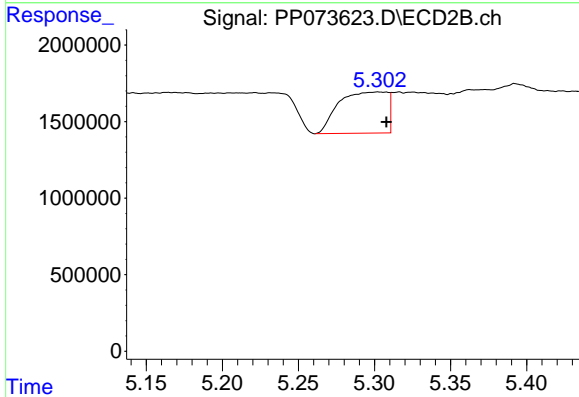
R.T.: 5.135 min  
 Delta R.T.: -0.002 min  
 Response: 1047584  
 Conc: 48.37 ng/ml



#15 AR-1232-5

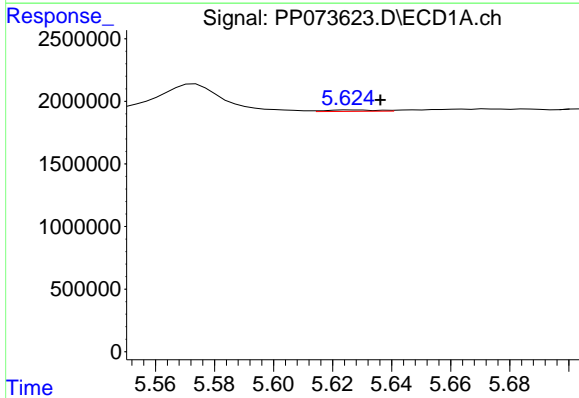
R.T.: 5.900 min  
 Delta R.T.: -0.010 min  
 Response: 143525  
 Conc: 13.58 ng/ml

Instrument :  
 ECD\_P  
 ClientSampleId :  
 I.BLK



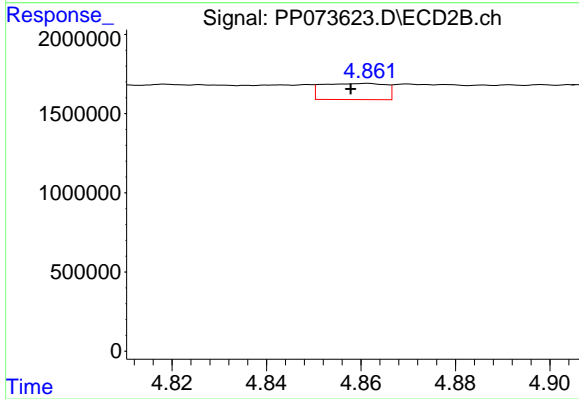
#15 AR-1232-5

R.T.: 5.302 min  
 Delta R.T.: -0.006 min  
 Response: 5980802  
 Conc: 265.07 ng/ml



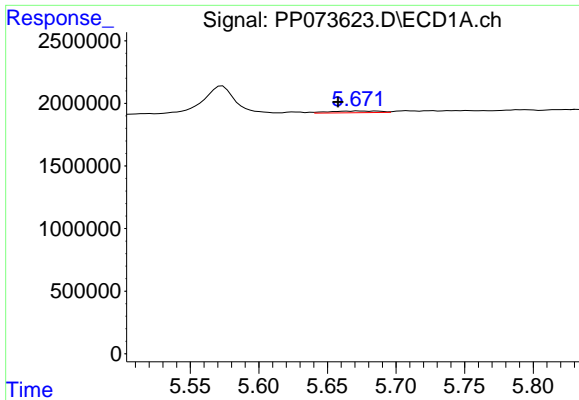
#16 AR-1242-1

R.T.: 5.626 min  
 Delta R.T.: -0.011 min  
 Response: 137956  
 Conc: 3.61 ng/ml



#16 AR-1242-1

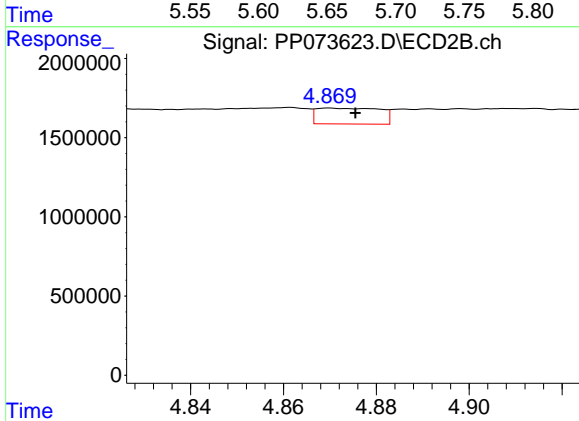
R.T.: 4.862 min  
 Delta R.T.: 0.004 min  
 Response: 948815  
 Conc: 16.43 ng/ml



#17 AR-1242-2

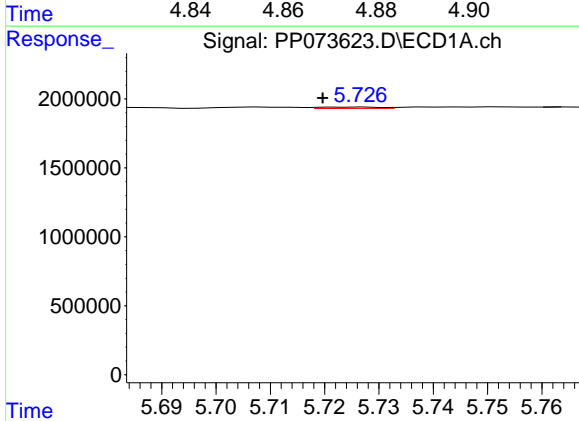
R.T.: 5.664 min  
 Delta R.T.: 0.007 min  
 Response: 356626  
 Conc: 5.96 ng/ml

Instrument :  
 ECD\_P  
 ClientSampleId :  
 I.BLK



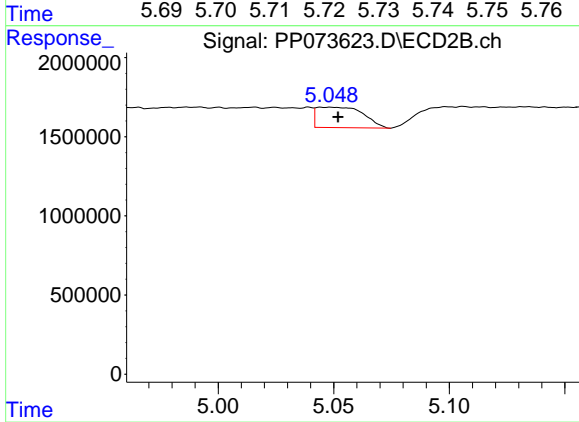
#17 AR-1242-2

R.T.: 4.870 min  
 Delta R.T.: -0.006 min  
 Response: 952063  
 Conc: 11.01 ng/ml



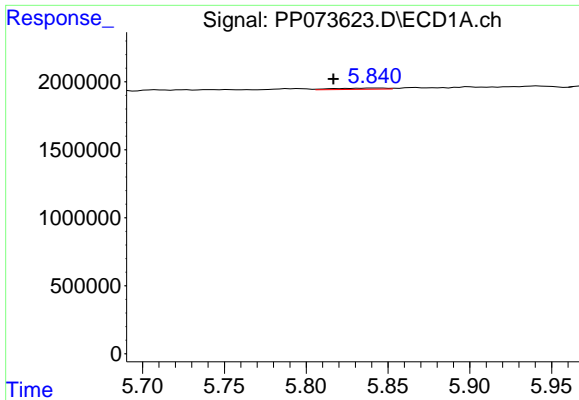
#18 AR-1242-3

R.T.: 5.727 min  
 Delta R.T.: 0.007 min  
 Response: 77443  
 Conc: 2.11 ng/ml



#18 AR-1242-3

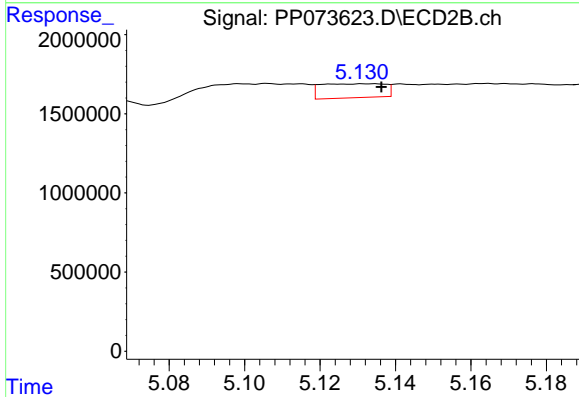
R.T.: 5.049 min  
 Delta R.T.: -0.003 min  
 Response: 1818283  
 Conc: 39.57 ng/ml



#19 AR-1242-4

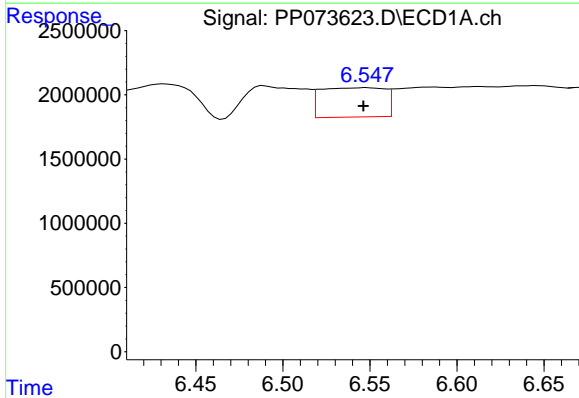
R.T.: 5.842 min  
 Delta R.T.: 0.025 min  
 Response: 199402  
 Conc: 6.20 ng/ml

Instrument :  
 ECD\_P  
 ClientSampleId :  
 I.BLK



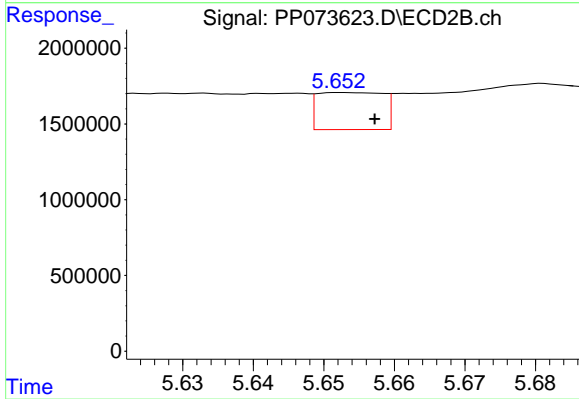
#19 AR-1242-4

R.T.: 5.135 min  
 Delta R.T.: -0.002 min  
 Response: 1047584  
 Conc: 23.67 ng/ml



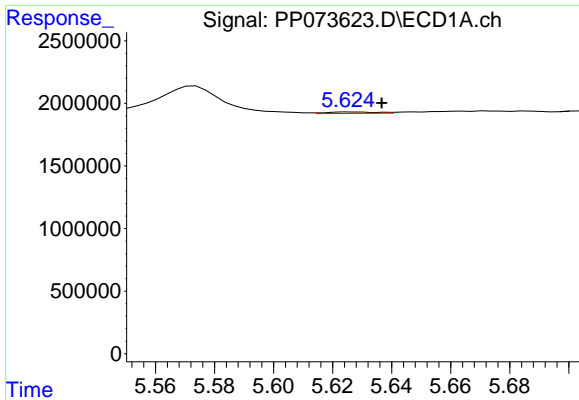
#20 AR-1242-5

R.T.: 6.548 min  
 Delta R.T.: 0.002 min  
 Response: 5818181  
 Conc: 177.73 ng/ml



#20 AR-1242-5

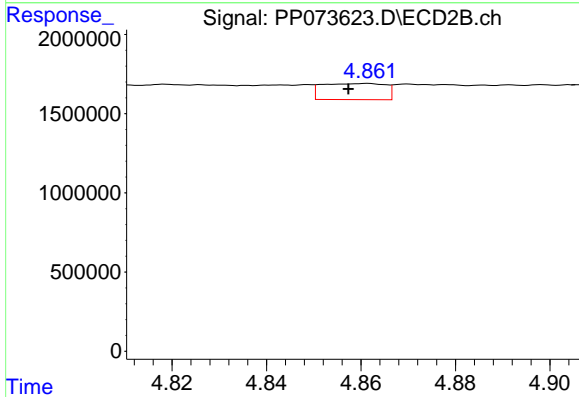
R.T.: 5.652 min  
 Delta R.T.: -0.005 min  
 Response: 1583346  
 Conc: 28.66 ng/ml



#21 AR-1248-1

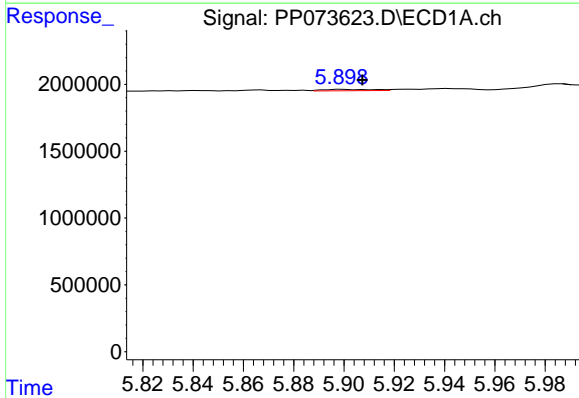
R.T.: 5.626 min  
 Delta R.T.: -0.011 min  
 Response: 137956  
 Conc: 4.47 ng/ml

Instrument :  
 ECD\_P  
 ClientSampleId :  
 I.BLK



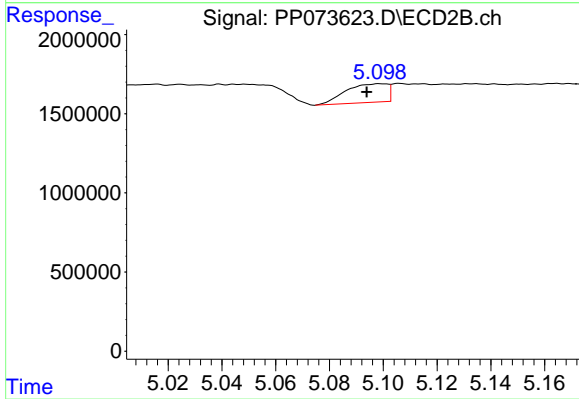
#21 AR-1248-1

R.T.: 4.862 min  
 Delta R.T.: 0.004 min  
 Response: 948815  
 Conc: 21.13 ng/ml



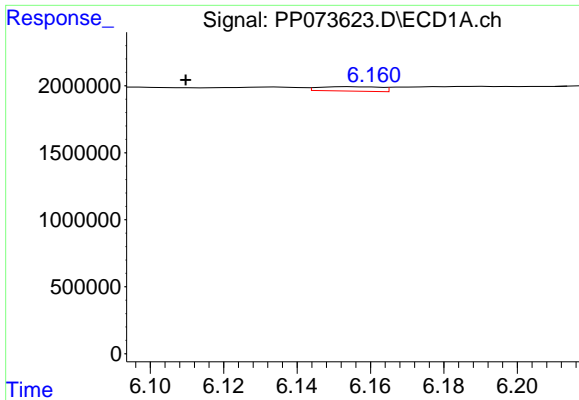
#22 AR-1248-2

R.T.: 5.900 min  
 Delta R.T.: -0.008 min  
 Response: 143525  
 Conc: 3.60 ng/ml



#22 AR-1248-2

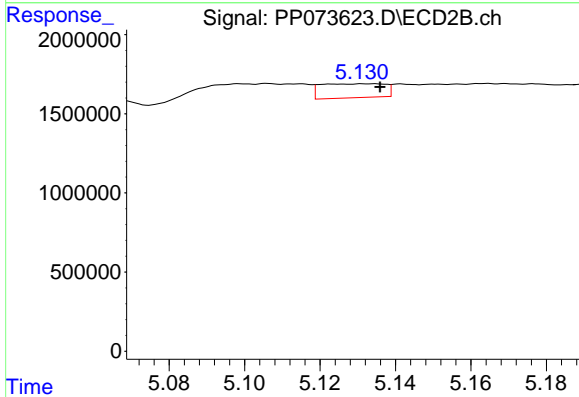
R.T.: 5.098 min  
 Delta R.T.: 0.004 min  
 Response: 1273888  
 Conc: 20.70 ng/ml



#23 AR-1248-3

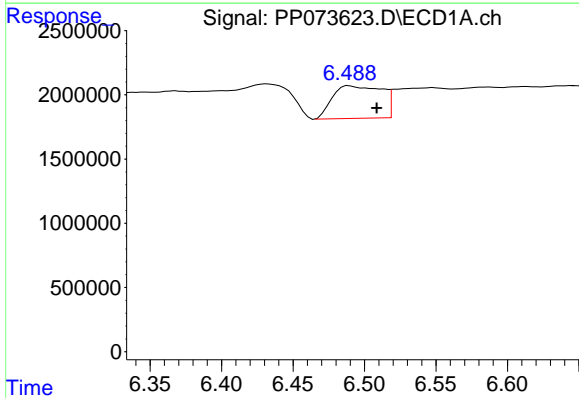
R.T.: 6.155 min  
 Delta R.T.: 0.045 min  
 Response: 380650  
 Conc: 8.57 ng/ml

Instrument :  
 ECD\_P  
 ClientSampleId :  
 I.BLK



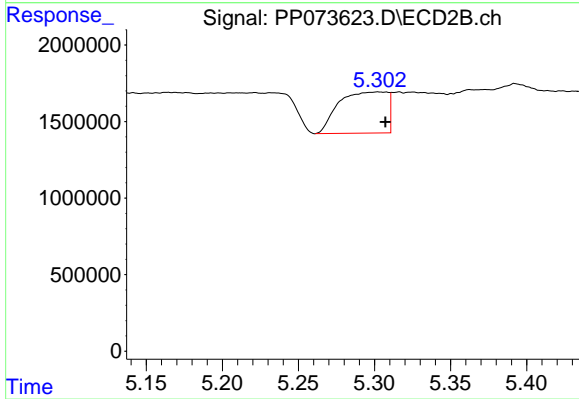
#23 AR-1248-3

R.T.: 5.135 min  
 Delta R.T.: -0.001 min  
 Response: 1047584  
 Conc: 16.35 ng/ml



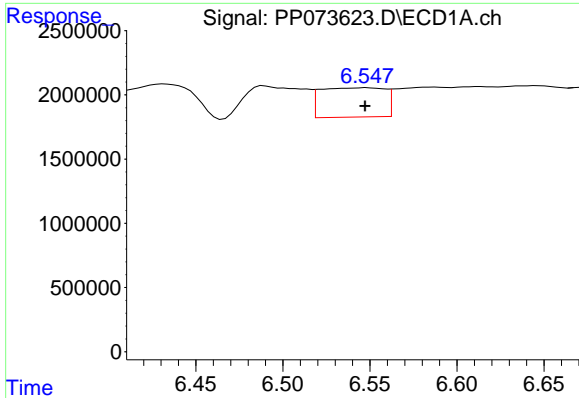
#24 AR-1248-4

R.T.: 6.489 min  
 Delta R.T.: -0.019 min  
 Response: 6027690  
 Conc: 109.43 ng/ml



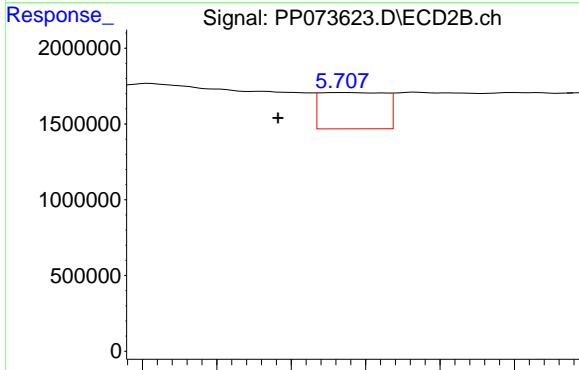
#24 AR-1248-4

R.T.: 5.302 min  
 Delta R.T.: -0.005 min  
 Response: 5980802  
 Conc: 79.34 ng/ml

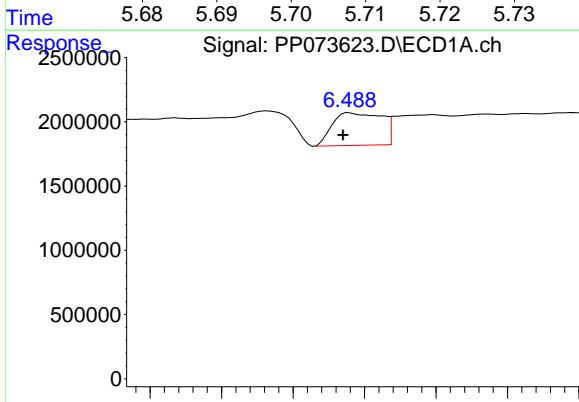


#25 AR-1248-5  
 R.T.: 6.548 min  
 Delta R.T.: 0.001 min  
 Response: 5818181  
 Conc: 108.16 ng/ml

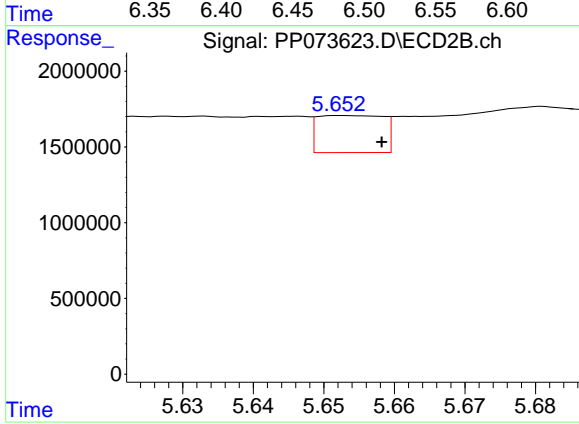
Instrument :  
 ECD\_P  
 ClientSampleId :  
 I.BLK



#25 AR-1248-5  
 R.T.: 5.707 min  
 Delta R.T.: 0.009 min  
 Response: 1459564  
 Conc: 19.57 ng/ml

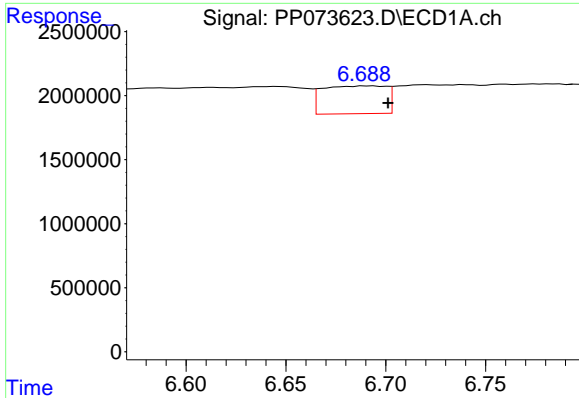


#26 AR-1254-1  
 R.T.: 6.489 min  
 Delta R.T.: 0.004 min  
 Response: 6027690  
 Conc: 112.48 ng/ml



#26 AR-1254-1  
 R.T.: 5.652 min  
 Delta R.T.: -0.006 min  
 Response: 1583346  
 Conc: 13.65 ng/ml

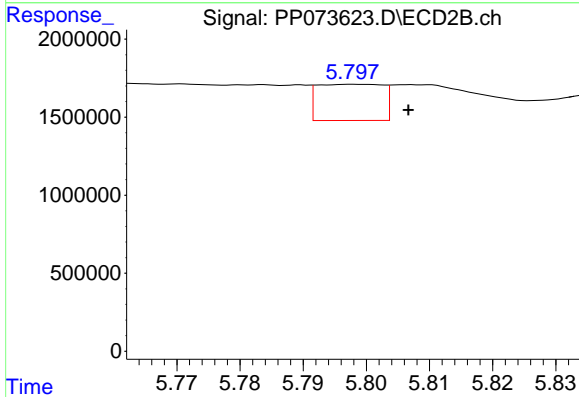




#27 AR-1254-2

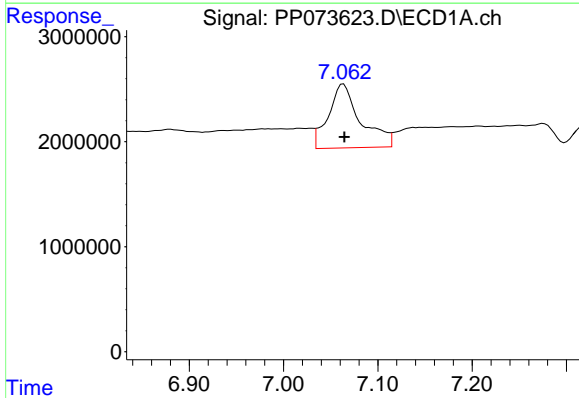
R.T.: 6.692 min  
 Delta R.T.: -0.009 min  
 Response: 4806756  
 Conc: 57.71 ng/ml

Instrument :  
 ECD\_P  
 ClientSampleId :  
 I.BLK



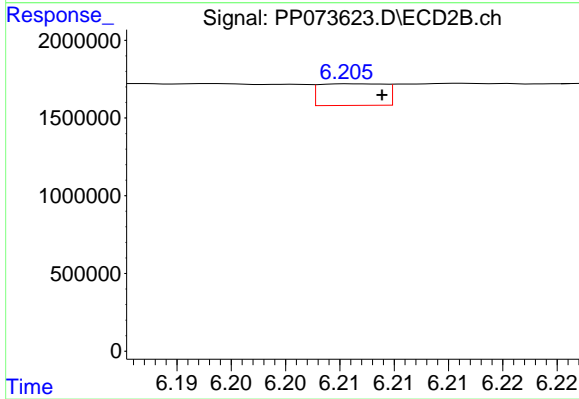
#27 AR-1254-2

R.T.: 5.798 min  
 Delta R.T.: -0.009 min  
 Response: 1671853  
 Conc: 16.61 ng/ml



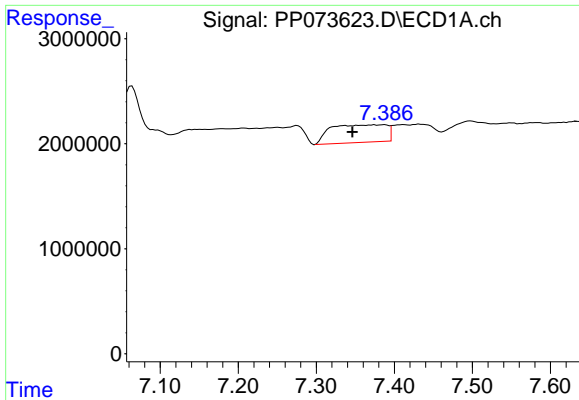
#28 AR-1254-3

R.T.: 7.064 min  
 Delta R.T.: 0.000 min  
 Response: 14449961  
 Conc: 163.59 ng/ml



#28 AR-1254-3

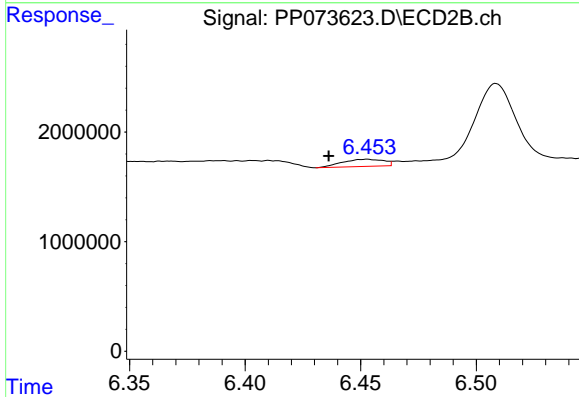
R.T.: 6.206 min  
 Delta R.T.: -0.003 min  
 Response: 582814  
 Conc: 3.77 ng/ml



#29 AR-1254-4

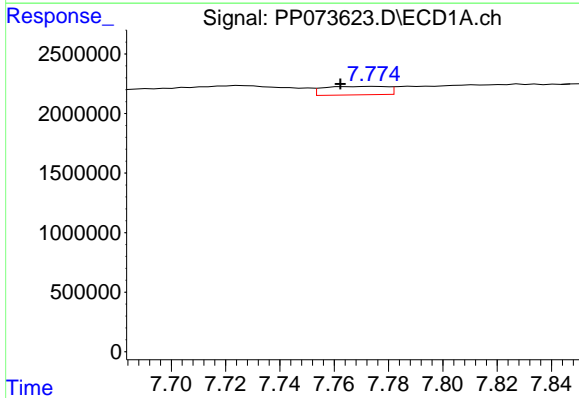
R.T.: 7.388 min  
 Delta R.T.: 0.042 min  
 Response: 8330687  
 Conc: 105.90 ng/ml

Instrument :  
 ECD\_P  
 ClientSampleId :  
 I.BLK



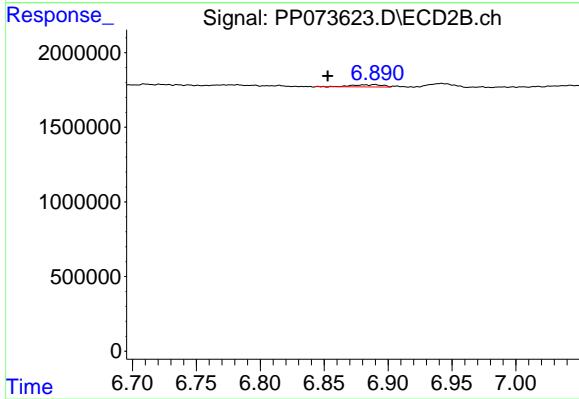
#29 AR-1254-4

R.T.: 6.453 min  
 Delta R.T.: 0.017 min  
 Response: 819075  
 Conc: 8.66 ng/ml



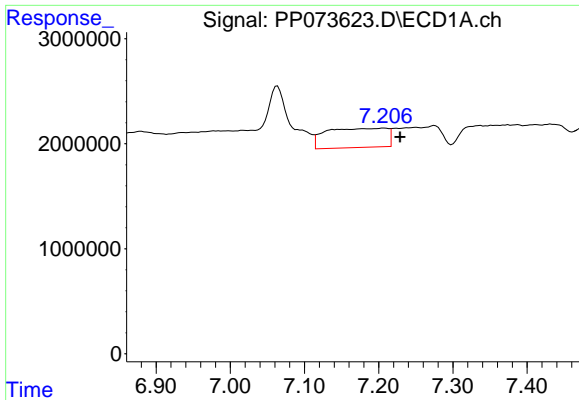
#30 AR-1254-5

R.T.: 7.776 min  
 Delta R.T.: 0.013 min  
 Response: 1147464  
 Conc: 15.57 ng/ml



#30 AR-1254-5

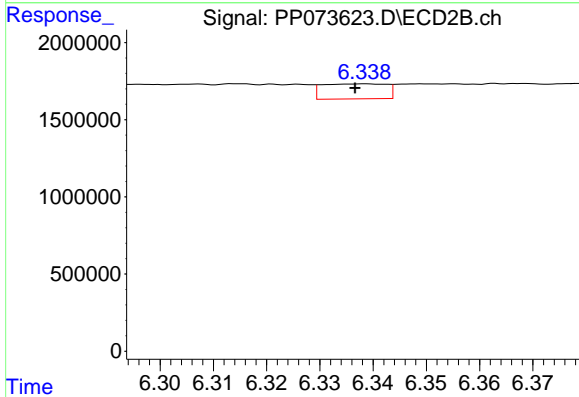
R.T.: 6.890 min  
 Delta R.T.: 0.037 min  
 Response: 253472  
 Conc: 1.90 ng/ml



#31 AR-1260-1

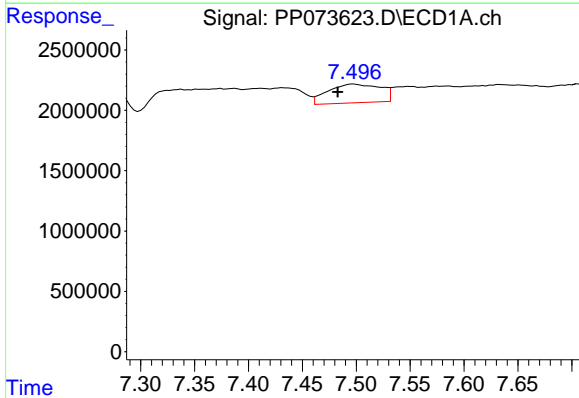
R.T.: 7.207 min  
 Delta R.T.: -0.022 min  
 Response: 10431565  
 Conc: 176.92 ng/ml

Instrument :  
 ECD\_P  
 ClientSampleId :  
 I.BLK



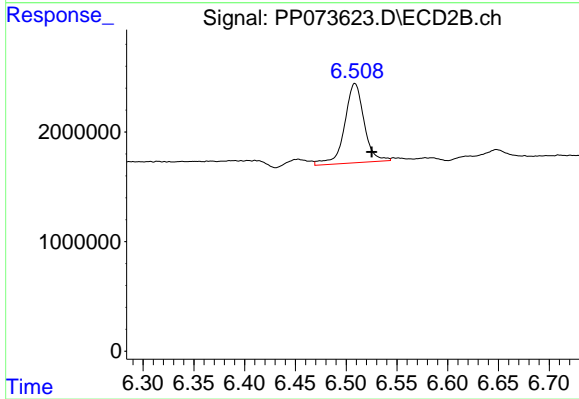
#31 AR-1260-1

R.T.: 6.339 min  
 Delta R.T.: 0.002 min  
 Response: 814481  
 Conc: 8.35 ng/ml



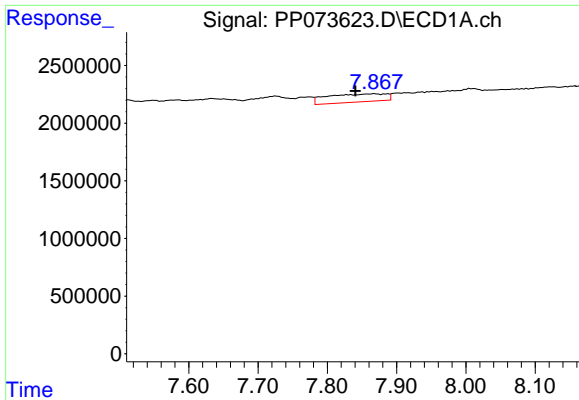
#32 AR-1260-2

R.T.: 7.497 min  
 Delta R.T.: 0.015 min  
 Response: 5240120  
 Conc: 54.68 ng/ml



#32 AR-1260-2

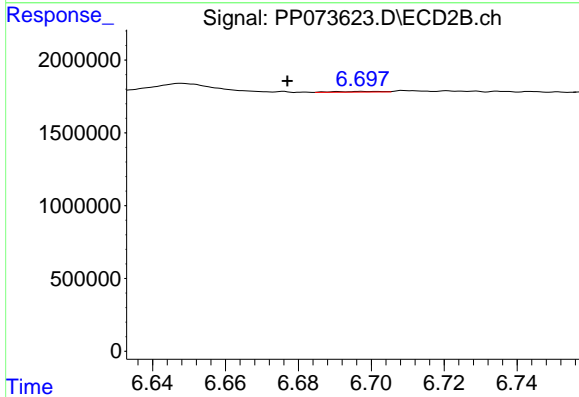
R.T.: 6.509 min  
 Delta R.T.: -0.017 min  
 Response: 9662286  
 Conc: 78.66 ng/ml



#33 AR-1260-3

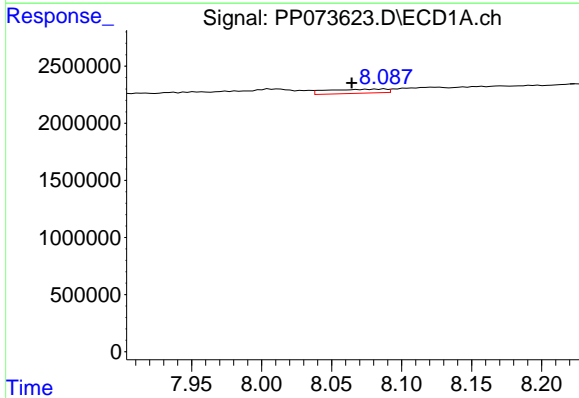
R.T.: 7.868 min  
 Delta R.T.: 0.028 min  
 Response: 4153889  
 Conc: 56.85 ng/ml

Instrument :  
 ECD\_P  
 ClientSampleId :  
 I.BLK



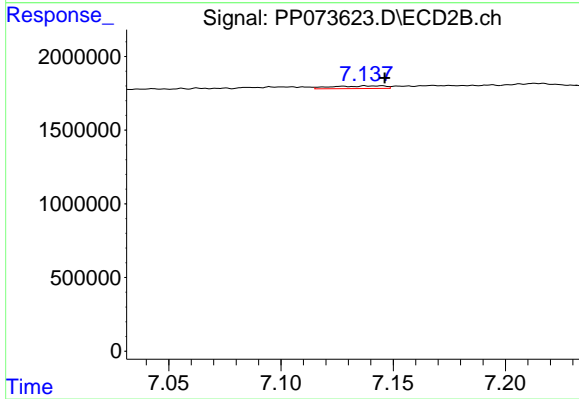
#33 AR-1260-3

R.T.: 6.698 min  
 Delta R.T.: 0.021 min  
 Response: 38227  
 Conc: 0.35 ng/ml



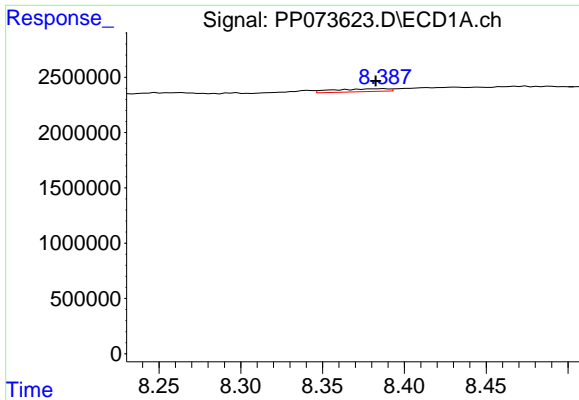
#34 AR-1260-4

R.T.: 8.075 min  
 Delta R.T.: 0.011 min  
 Response: 1061880  
 Conc: 16.26 ng/ml



#34 AR-1260-4

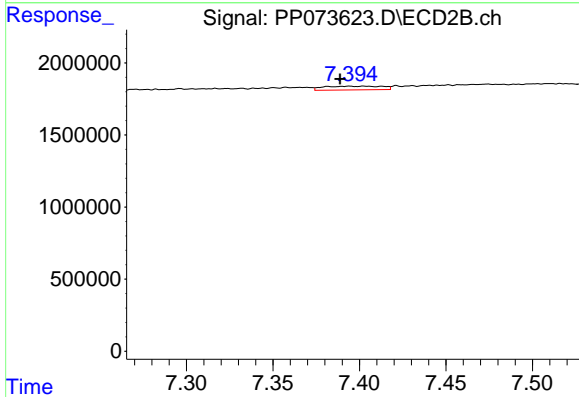
R.T.: 7.145 min  
 Delta R.T.: -0.002 min  
 Response: 291253  
 Conc: 3.26 ng/ml



#35 AR-1260-5

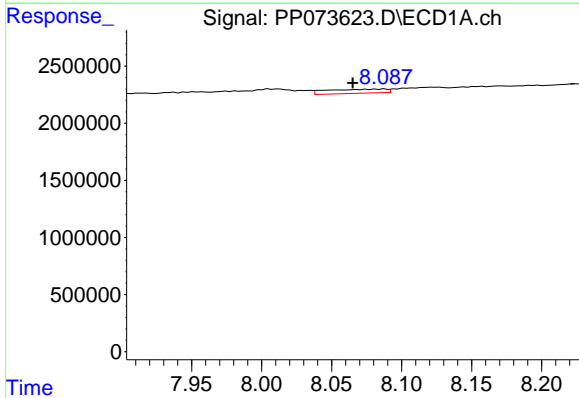
R.T.: 8.388 min  
 Delta R.T.: 0.005 min  
 Response: 606069  
 Conc: 4.02 ng/ml

Instrument :  
 ECD\_P  
 ClientSampleId :  
 I.BLK



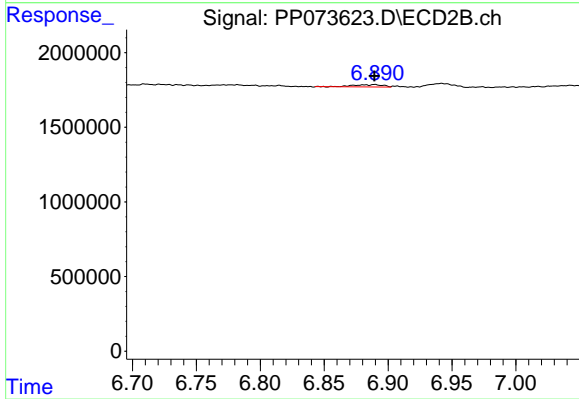
#35 AR-1260-5

R.T.: 7.394 min  
 Delta R.T.: 0.005 min  
 Response: 613190  
 Conc: 2.73 ng/ml



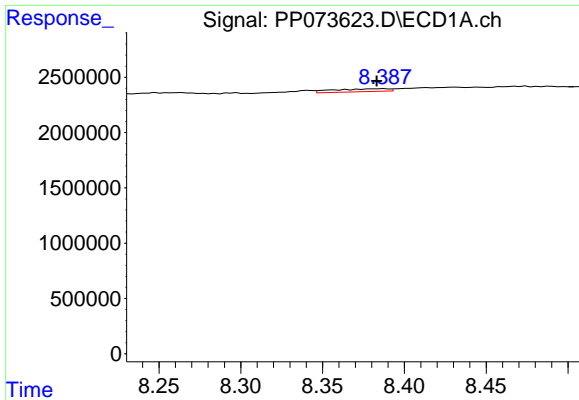
#36 AR-1262-1

R.T.: 8.075 min  
 Delta R.T.: 0.010 min  
 Response: 1061880  
 Conc: 12.20 ng/ml



#36 AR-1262-1

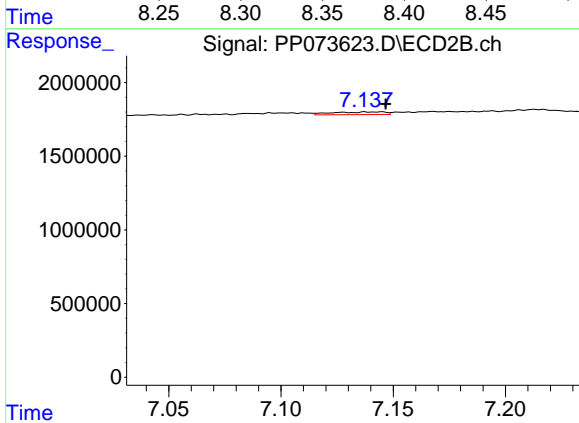
R.T.: 6.890 min  
 Delta R.T.: 0.000 min  
 Response: 253472  
 Conc: 1.72 ng/ml



#37 AR-1262-2

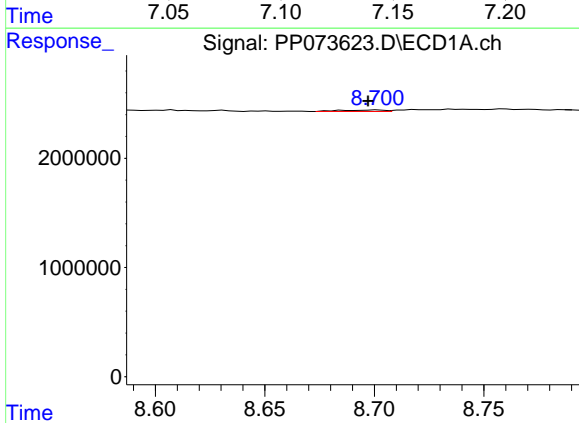
R.T.: 8.388 min  
 Delta R.T.: 0.005 min  
 Response: 606069  
 Conc: 3.06 ng/ml

Instrument :  
 ECD\_P  
 ClientSampleId :  
 I.BLK



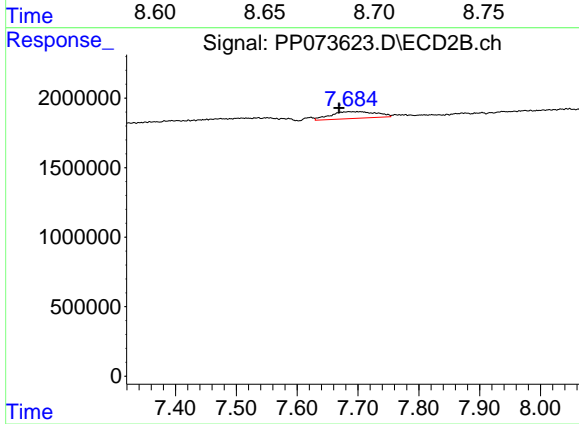
#37 AR-1262-2

R.T.: 7.145 min  
 Delta R.T.: -0.002 min  
 Response: 291253  
 Conc: 2.28 ng/ml



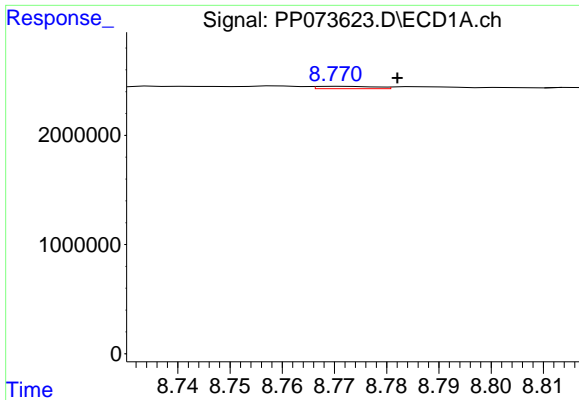
#38 AR-1262-3

R.T.: 8.702 min  
 Delta R.T.: 0.005 min  
 Response: 185098  
 Conc: 1.47 ng/ml



#38 AR-1262-3

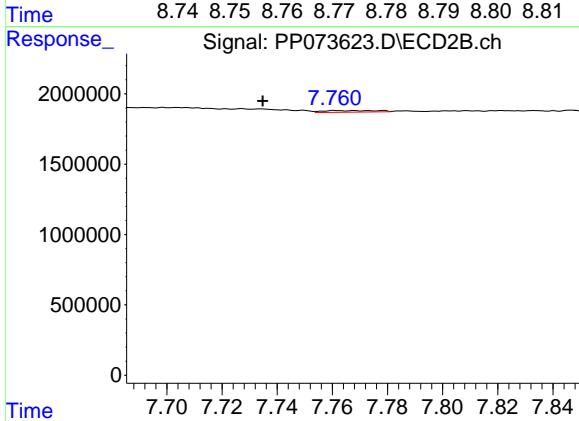
R.T.: 7.699 min  
 Delta R.T.: 0.030 min  
 Response: 2532501  
 Conc: 22.21 ng/ml



#39 AR-1262-4

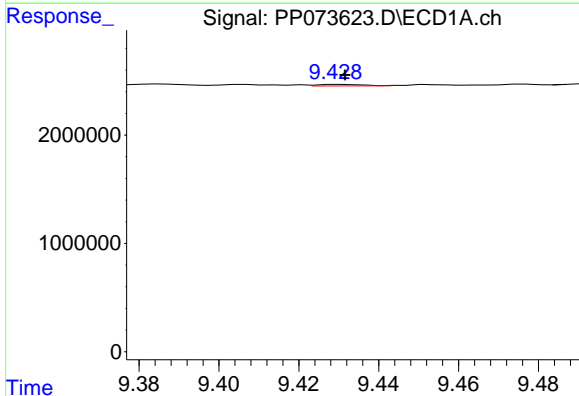
R.T.: 8.771 min  
 Delta R.T.: -0.011 min  
 Response: 166220  
 Conc: 1.78 ng/ml

Instrument :  
 ECD\_P  
 ClientSampleId :  
 I.BLK



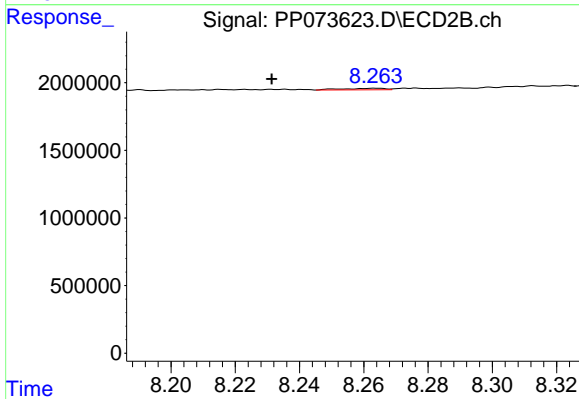
#39 AR-1262-4

R.T.: 7.761 min  
 Delta R.T.: 0.026 min  
 Response: 165227  
 Conc: 0.90 ng/ml



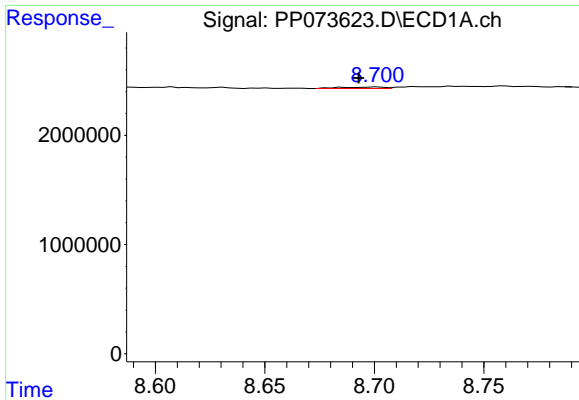
#40 AR-1262-5

R.T.: 9.430 min  
 Delta R.T.: -0.001 min  
 Response: 121836  
 Conc: 1.92 ng/ml



#40 AR-1262-5

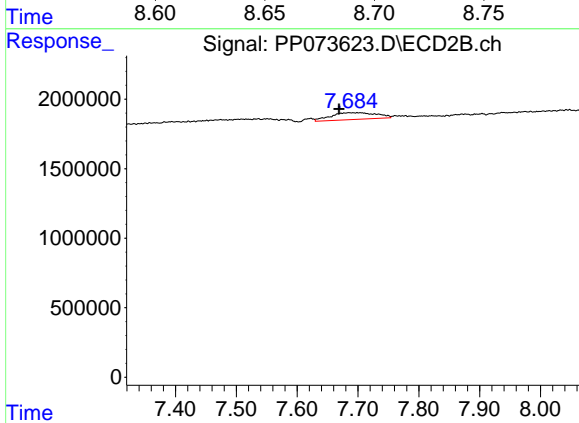
R.T.: 8.264 min  
 Delta R.T.: 0.032 min  
 Response: 103389  
 Conc: 1.22 ng/ml



#41 AR-1268-1

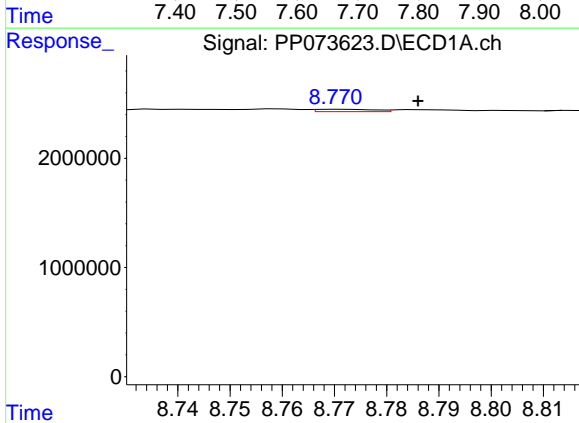
R.T.: 8.702 min  
 Delta R.T.: 0.009 min  
 Response: 185098  
 Conc: 0.83 ng/ml

Instrument :  
 ECD\_P  
 ClientSampleId :  
 I.BLK



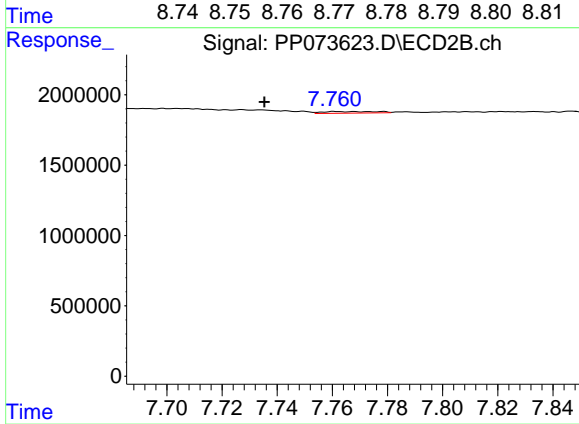
#41 AR-1268-1

R.T.: 7.699 min  
 Delta R.T.: 0.030 min  
 Response: 2532501  
 Conc: 8.24 ng/ml



#42 AR-1268-2

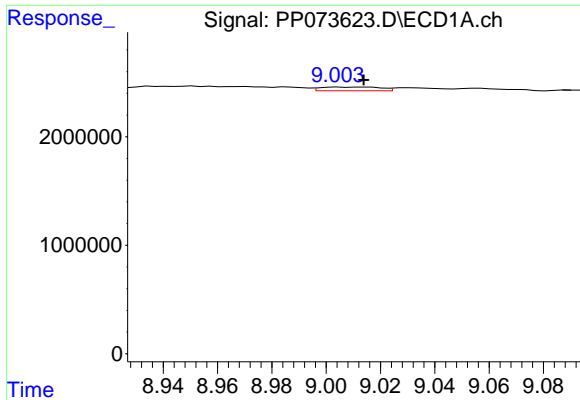
R.T.: 8.771 min  
 Delta R.T.: -0.015 min  
 Response: 166220  
 Conc: 0.87 ng/ml



#42 AR-1268-2

R.T.: 7.761 min  
 Delta R.T.: 0.026 min  
 Response: 165227  
 Conc: 0.62 ng/ml

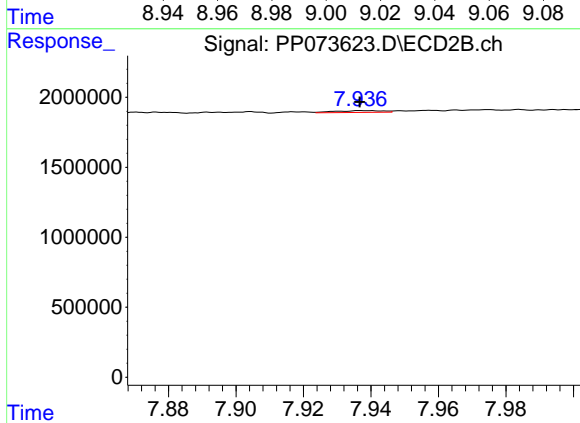




#43 AR-1268-3

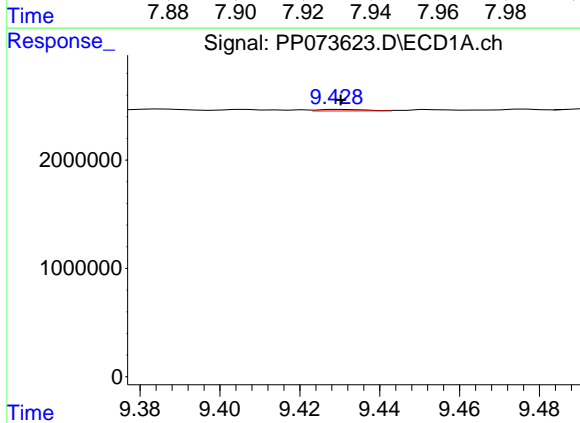
R.T.: 9.005 min  
 Delta R.T.: -0.009 min  
 Response: 517536  
 Conc: 3.13 ng/ml

Instrument :  
 ECD\_P  
 ClientSampleId :  
 I.BLK



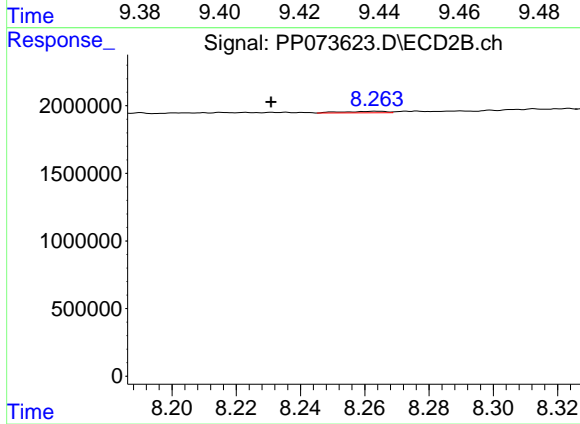
#43 AR-1268-3

R.T.: 7.938 min  
 Delta R.T.: 0.001 min  
 Response: 130370  
 Conc: 0.58 ng/ml



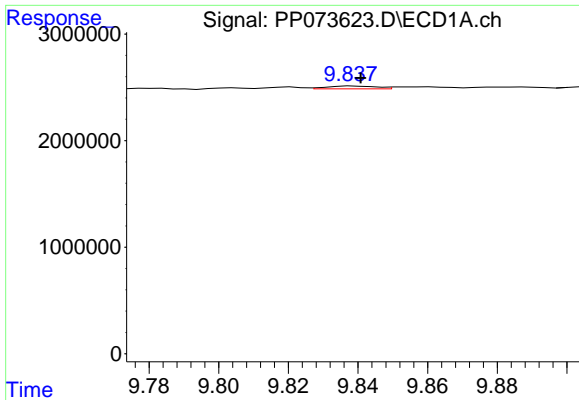
#44 AR-1268-4

R.T.: 9.430 min  
 Delta R.T.: 0.000 min  
 Response: 121836  
 Conc: 1.75 ng/ml



#44 AR-1268-4

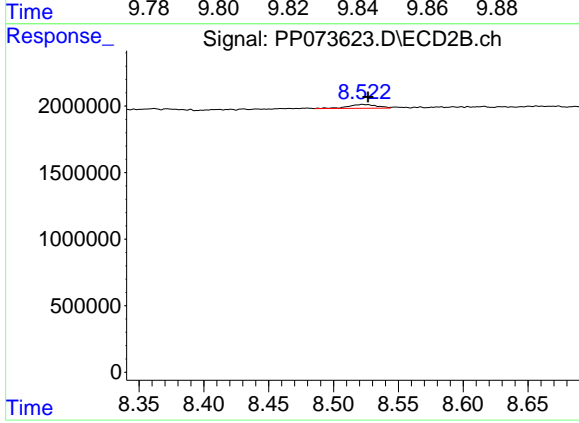
R.T.: 8.264 min  
 Delta R.T.: 0.033 min  
 Response: 103389  
 Conc: 1.11 ng/ml



#45 AR-1268-5

R.T.: 9.839 min  
 Delta R.T.: -0.002 min  
 Response: 259843  
 Conc: 0.56 ng/ml

Instrument :  
 ECD\_P  
 ClientSampleId :  
 I.BLK



#45 AR-1268-5

R.T.: 8.522 min  
 Delta R.T.: -0.004 min  
 Response: 445105  
 Conc: 0.72 ng/ml