

Data Path : Z:\pestpcbsrv\HPCHEM1\ECD_P\Data\PP071122\
 Data File : PP049345.D
 Signal(s) : Signal #1: ECD1A.ch Signal #2: ECD2B.ch
 Acq On : 11 Jul 2022 14:17
 Operator : YP\AJ
 Sample : N3649-06
 Misc :
 ALS Vial : 16 Sample Multiplier: 1

Instrument :
 ECD_P
 ClientSampleId :
 A-2-UC

Integration File signal 1: autoint1.e
 Integration File signal 2: autoint2.e
 Quant Time: Jul 12 00:03:50 2022
 Quant Method : Z:\pestpcbsrv\HPCHEM1\ECD_P\methods\PP062822.M
 Quant Title : GC EXTRACTABLES
 QLast Update : Wed Jun 29 09:37:18 2022
 Response via : Initial Calibration
 Integrator: ChemStation

Volume Inj. : 2 µl
 Signal #1 Phase : ZB-MR1 Signal #2 Phase: ZB-MR2
 Signal #1 Info : 30Mx0.32mmx 0.50µ Signal #2 Info : 30M x 0.32mm x 0.25µm

| Compound | RT#1 | RT#2 | Resp#1 | Resp#2 | ng/ml | ng/ml |
|-----------------------------|--------|-------|----------|----------|--------|--------|
| ----- | | | | | | |
| System Monitoring Compounds | | | | | | |
| 1) SA Tetrachlo... | 4.346 | 3.597 | 33306865 | 57614842 | 23.430 | 22.500 |
| 2) SA Decachlor... | 10.093 | 8.568 | 26137054 | 21162012 | 21.309 | 18.774 |

Target Compounds

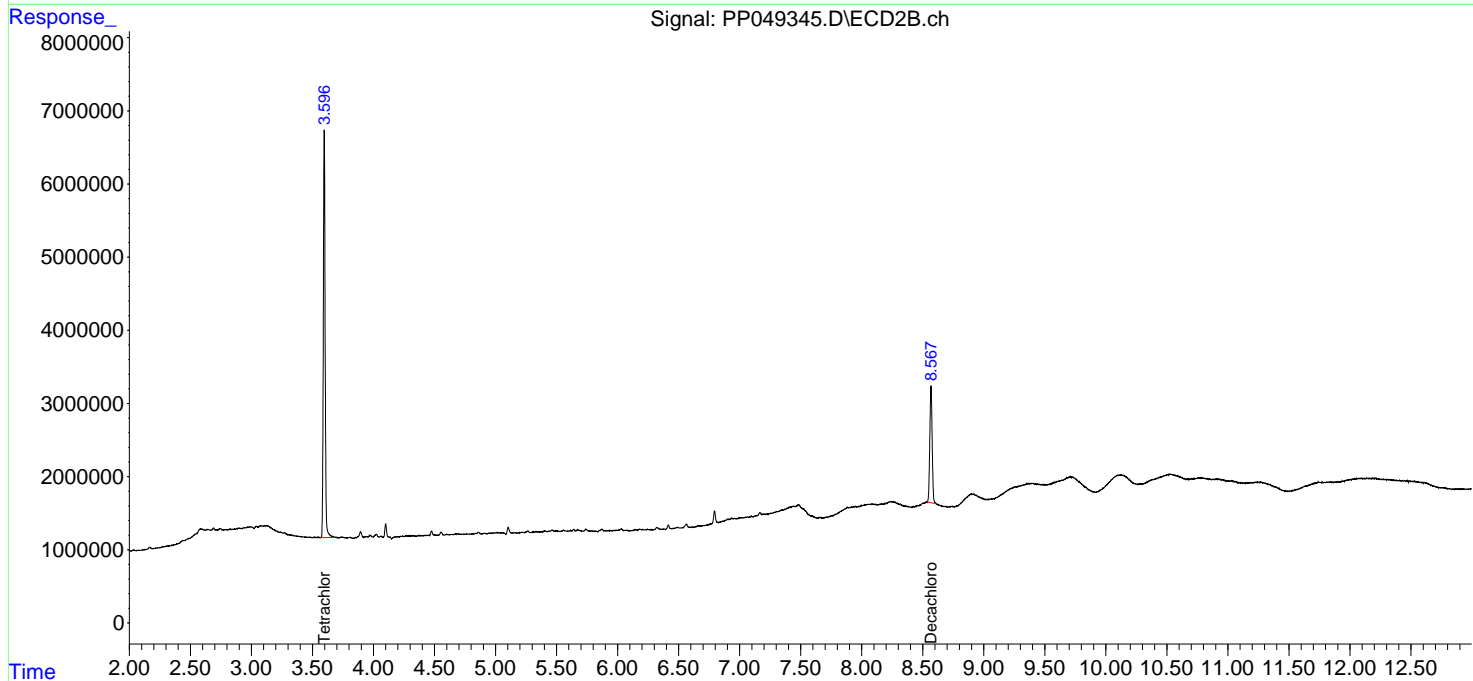
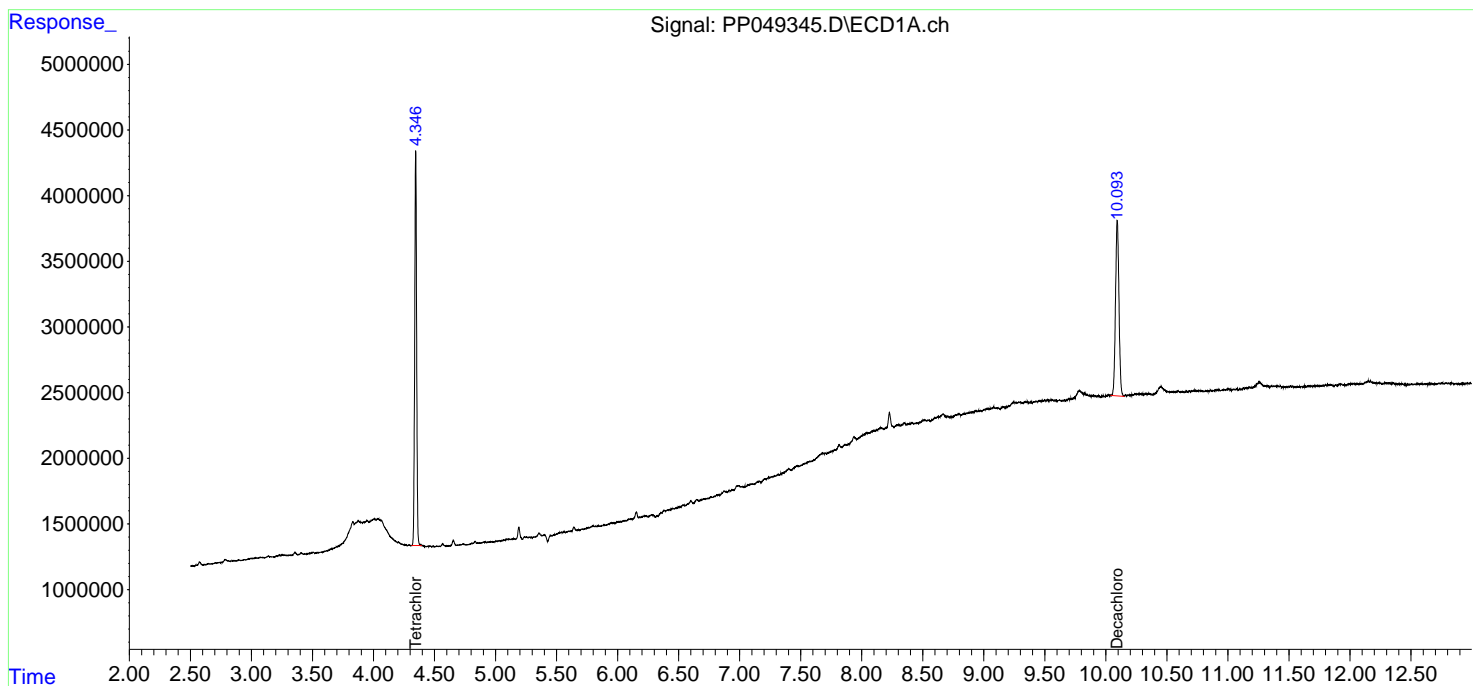
(f)=RT Delta > 1/2 Window (#)=Amounts differ by > 25% (m)=manual int.

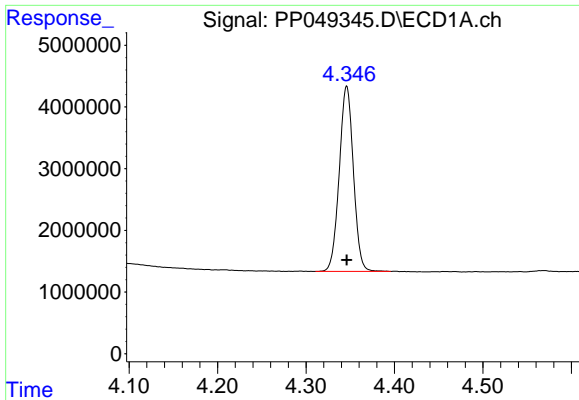
Data Path : Z:\pestpcbsrv\HPCHEM1\ECD_P\Data\PP071122\
 Data File : PP049345.D
 Signal(s) : Signal #1: ECD1A.ch Signal #2: ECD2B.ch
 Acq On : 11 Jul 2022 14:17
 Operator : YP\AJ
 Sample : N3649-06
 Misc :
 ALS Vial : 16 Sample Multiplier: 1

Instrument :
 ECD_P
 ClientSampleId :
 A-2-UC

Integration File signal 1: autoint1.e
 Integration File signal 2: autoint2.e
 Quant Time: Jul 12 00:03:50 2022
 Quant Method : Z:\pestpcbsrv\HPCHEM1\ECD_P\methods\PP062822.M
 Quant Title : GC EXTRACTABLES
 QLast Update : Wed Jun 29 09:37:18 2022
 Response via : Initial Calibration
 Integrator: ChemStation

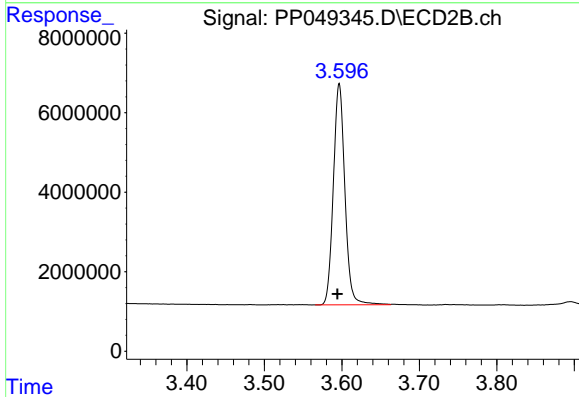
Volume Inj. : 2 µl
 Signal #1 Phase : ZB-MR1 Signal #2 Phase: ZB-MR2
 Signal #1 Info : 30Mx0.32mmx 0.50µ Signal #2 Info : 30M x 0.32mm x 0.25µm



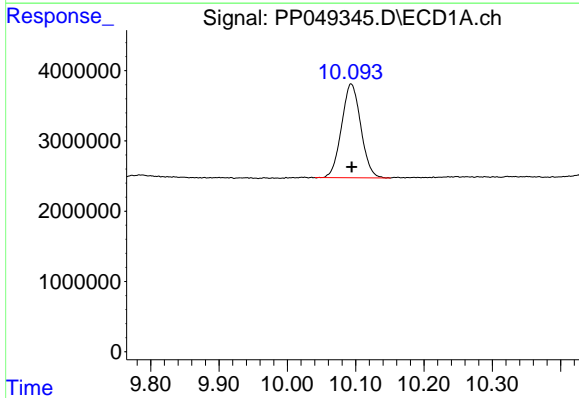


#1 Tetrachloro-m-xylene
 R.T.: 4.346 min
 Delta R.T.: 0.000 min
 Response: 33306865
 Conc: 23.43 ng/ml

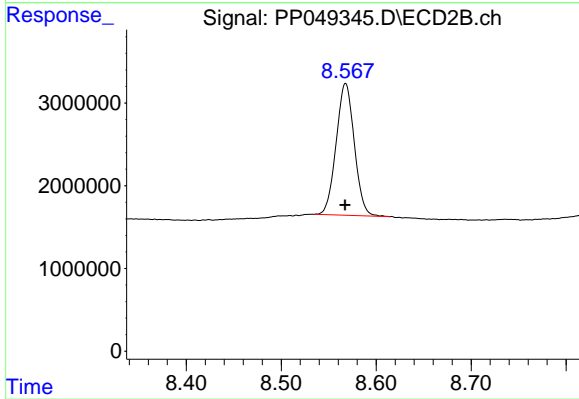
Instrument :
 ECD_P
 ClientSampleId :
 A-2-UC



#1 Tetrachloro-m-xylene
 R.T.: 3.597 min
 Delta R.T.: 0.002 min
 Response: 57614842
 Conc: 22.50 ng/ml



#2 Decachlorobiphenyl
 R.T.: 10.093 min
 Delta R.T.: 0.000 min
 Response: 26137054
 Conc: 21.31 ng/ml



#2 Decachlorobiphenyl
 R.T.: 8.568 min
 Delta R.T.: 0.000 min
 Response: 21162012
 Conc: 18.77 ng/ml