

Data Path : Z:\pestpcbsrv\HPCHEM1\ECD_P\Data\PP071122\
 Data File : PP049351.D
 Signal(s) : Signal #1: ECD1A.ch Signal #2: ECD2B.ch
 Acq On : 11 Jul 2022 15:56
 Operator : YP\AJ
 Sample : N3654-03
 Misc :
 ALS Vial : 22 Sample Multiplier: 1

Instrument :
 ECD_P
ClientSampleId :
 S6-02-B

Integration File signal 1: autoint1.e
 Integration File signal 2: autoint2.e
 Quant Time: Jul 12 01:25:19 2022
 Quant Method : Z:\pestpcbsrv\HPCHEM1\ECD_P\methods\PP062822.M
 Quant Title : GC EXTRACTABLES
 QLast Update : Wed Jun 29 09:37:18 2022
 Response via : Initial Calibration
 Integrator: ChemStation

Volume Inj. : 2 µl
 Signal #1 Phase : ZB-MR1 Signal #2 Phase: ZB-MR2
 Signal #1 Info : 30Mx0.32mmx 0.50µ Signal #2 Info : 30M x 0.32mm x 0.25µm

Compound	RT#1	RT#2	Resp#1	Resp#2	ng/ml	ng/ml

System Monitoring Compounds						
1) SA Tetrachlo...	4.346	3.597	36344381	62974988	25.566	24.593
2) SA Decachlor...	10.097	8.569	32716032	26148748	26.672	23.198
Target Compounds						
41) L9 AR-1268-1	8.603	7.480	22076468	19819096	117.554	92.129
42) L9 AR-1268-2	8.697	7.545	13670715	16655766	78.136	87.071
43) L9 AR-1268-3	8.921	7.750	15297234	13680672	106.785	89.824
44) L9 AR-1268-4	9.355	8.036	5334167	4442535	83.268	69.707
45) L9 AR-1268-5	9.765	8.321	44529330	34134253	96.546	85.548

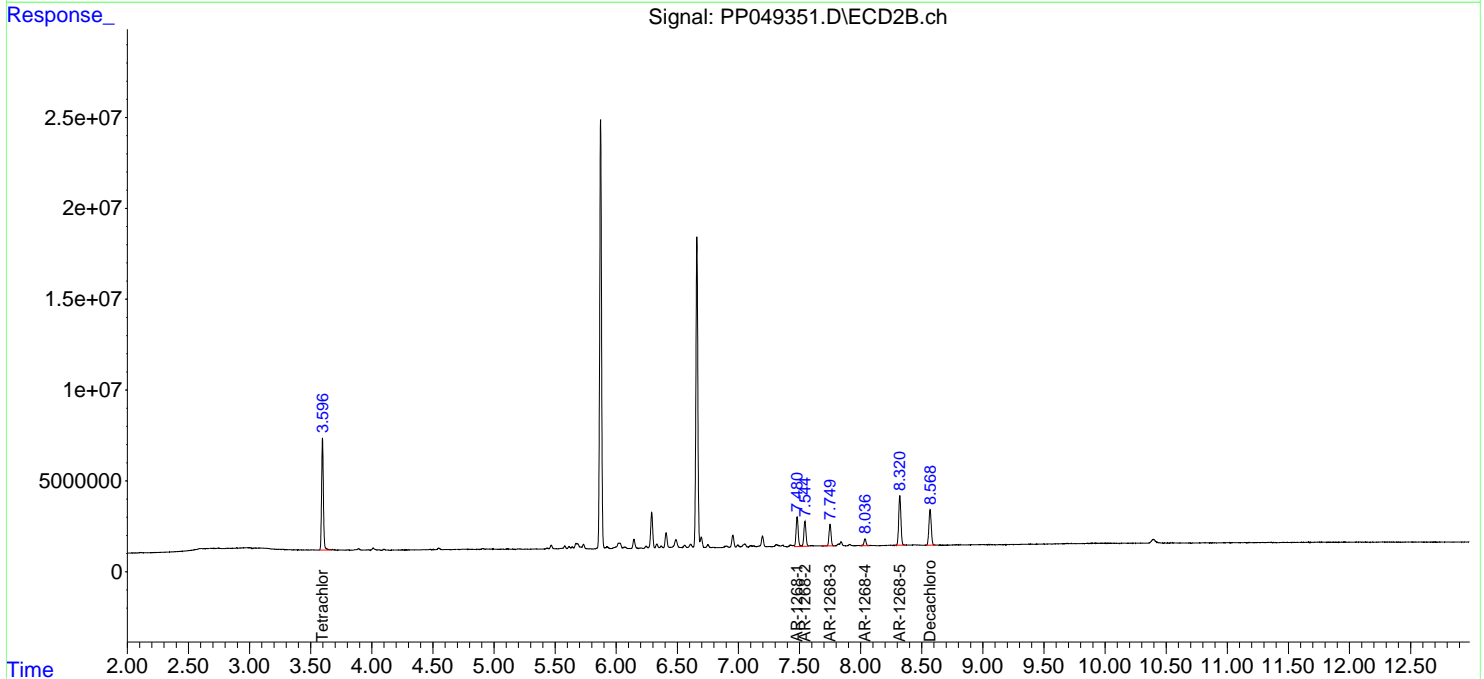
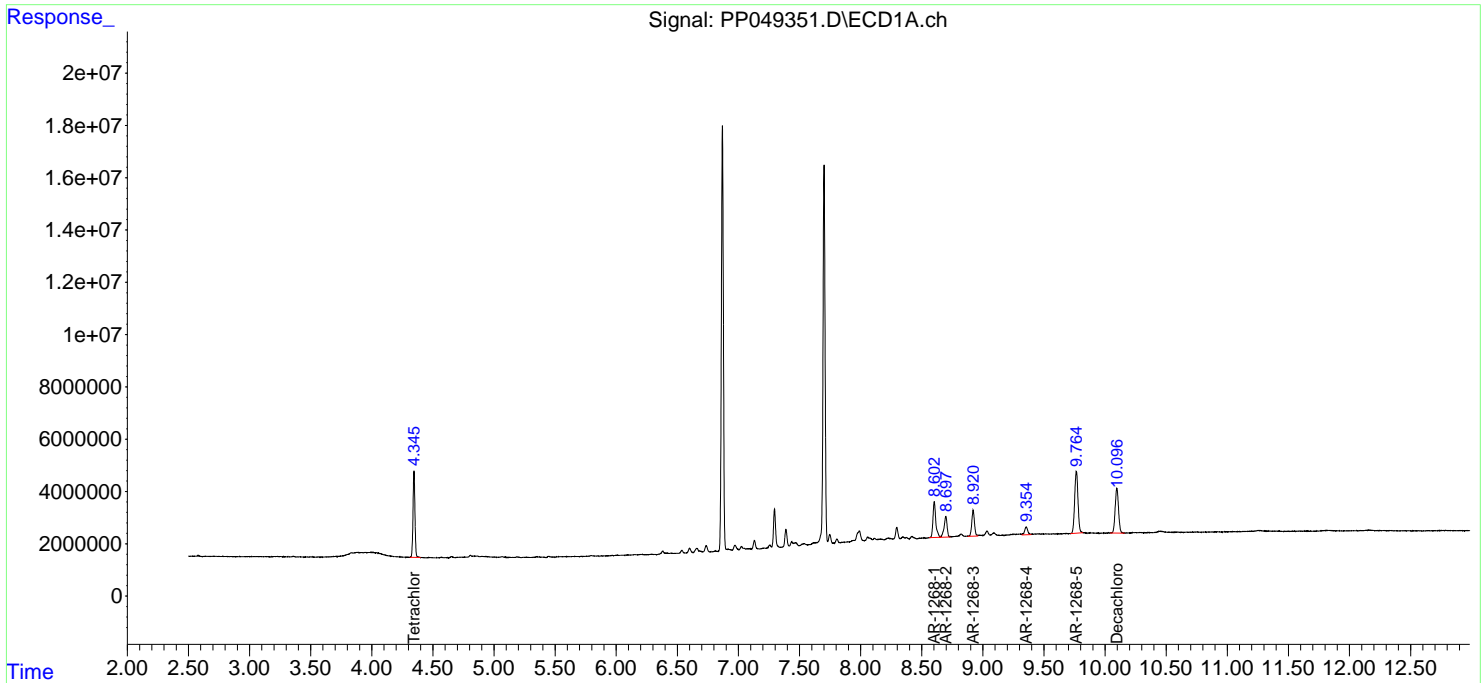
(f)=RT Delta > 1/2 Window (#)=Amounts differ by > 25% (m)=manual int.

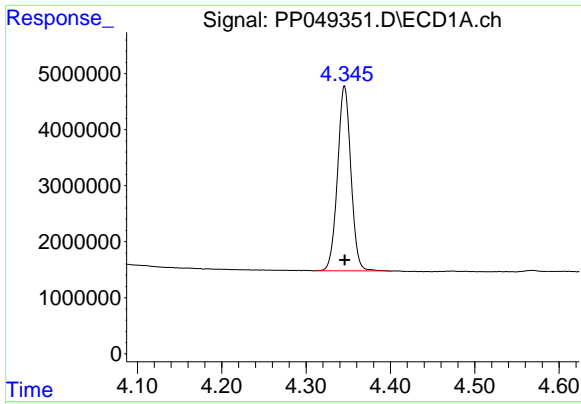
Data Path : Z:\pestpcbsrv\HPCHEM1\ECD_P\Data\PP071122\
 Data File : PP049351.D
 Signal(s) : Signal #1: ECD1A.ch Signal #2: ECD2B.ch
 Acq On : 11 Jul 2022 15:56
 Operator : YP\AJ
 Sample : N3654-03
 Misc :
 ALS Vial : 22 Sample Multiplier: 1

Instrument :
 ECD_P
 ClientSampleId :
 S6-02-B

Integration File signal 1: autoint1.e
 Integration File signal 2: autoint2.e
 Quant Time: Jul 12 01:25:19 2022
 Quant Method : Z:\pestpcbsrv\HPCHEM1\ECD_P\methods\PP062822.M
 Quant Title : GC EXTRACTABLES
 QLast Update : Wed Jun 29 09:37:18 2022
 Response via : Initial Calibration
 Integrator: ChemStation

Volume Inj. : 2 µl
 Signal #1 Phase : ZB-MR1 Signal #2 Phase: ZB-MR2
 Signal #1 Info : 30Mx0.32mmx 0.50µ Signal #2 Info : 30M x 0.32mm x 0.25µm

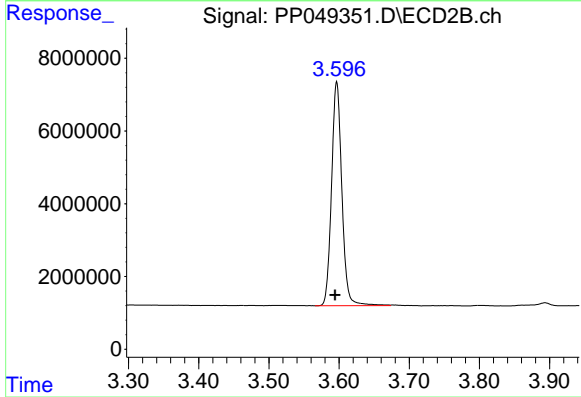




#1 Tetrachloro-m-xylene

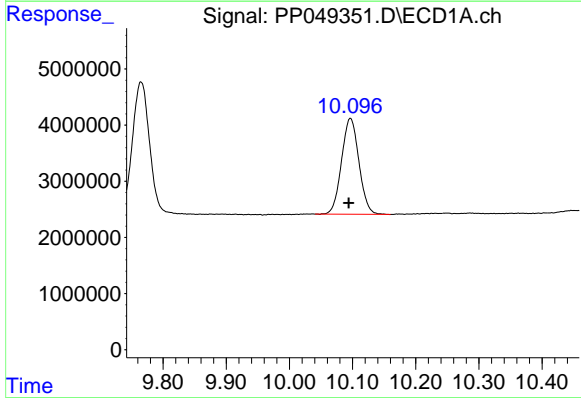
R.T.: 4.346 min
 Delta R.T.: 0.000 min
 Response: 36344381
 Conc: 25.57 ng/ml

Instrument :
 ECD_P
 ClientSampleId :
 S6-02-B



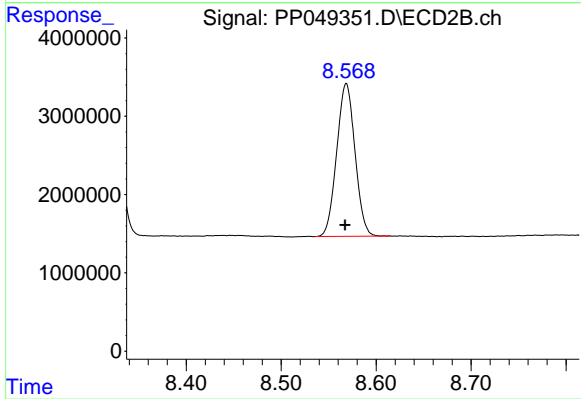
#1 Tetrachloro-m-xylene

R.T.: 3.597 min
 Delta R.T.: 0.002 min
 Response: 62974988
 Conc: 24.59 ng/ml



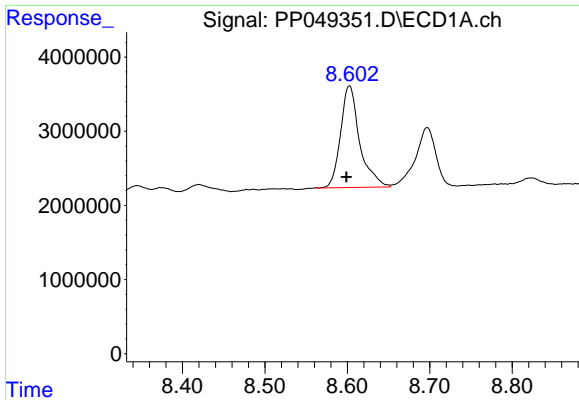
#2 Decachlorobiphenyl

R.T.: 10.097 min
 Delta R.T.: 0.002 min
 Response: 32716032
 Conc: 26.67 ng/ml



#2 Decachlorobiphenyl

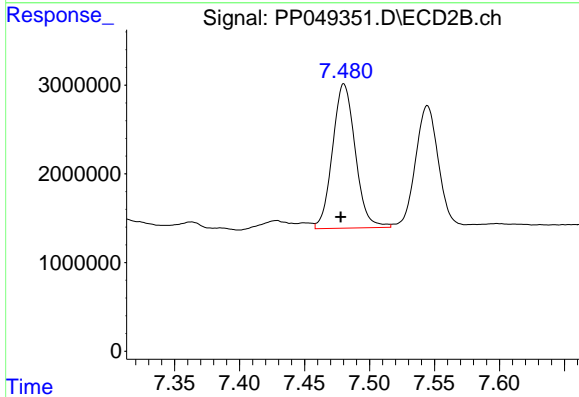
R.T.: 8.569 min
 Delta R.T.: 0.001 min
 Response: 26148748
 Conc: 23.20 ng/ml



#41 AR-1268-1

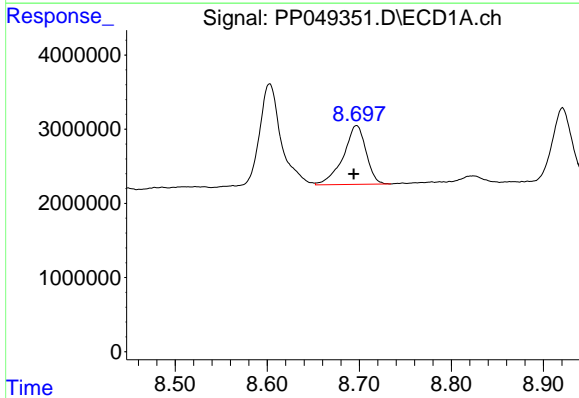
R.T.: 8.603 min
 Delta R.T.: 0.004 min
 Response: 22076468
 Conc: 117.55 ng/ml

Instrument :
 ECD_P
 ClientSampleId :
 S6-02-B



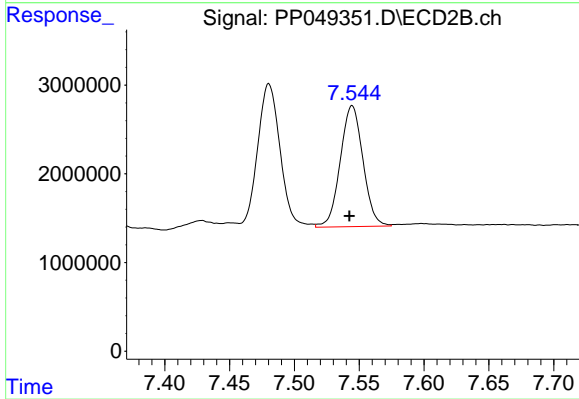
#41 AR-1268-1

R.T.: 7.480 min
 Delta R.T.: 0.002 min
 Response: 19819096
 Conc: 92.13 ng/ml



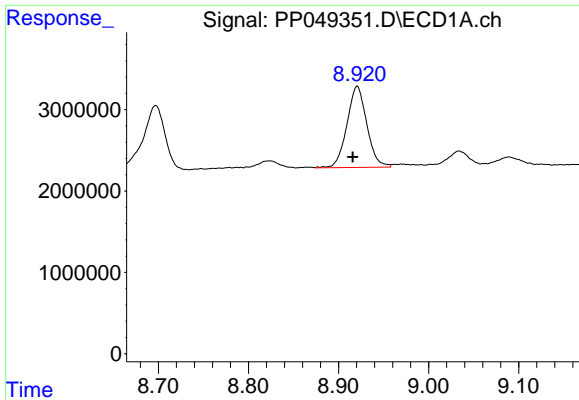
#42 AR-1268-2

R.T.: 8.697 min
 Delta R.T.: 0.003 min
 Response: 13670715
 Conc: 78.14 ng/ml



#42 AR-1268-2

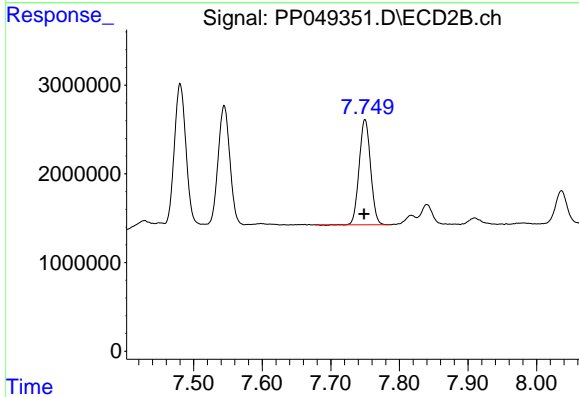
R.T.: 7.545 min
 Delta R.T.: 0.002 min
 Response: 16655766
 Conc: 87.07 ng/ml



#43 AR-1268-3

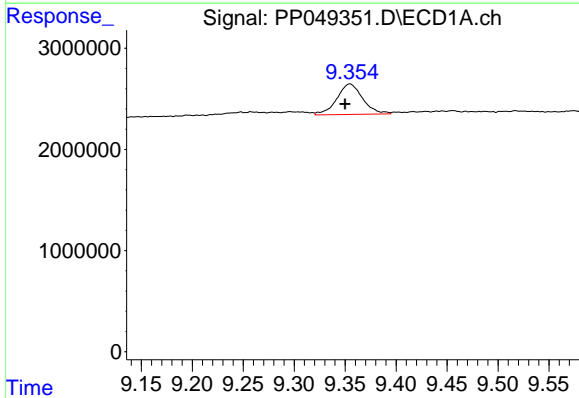
R.T.: 8.921 min
 Delta R.T.: 0.005 min
 Response: 15297234
 Conc: 106.79 ng/ml

Instrument :
 ECD_P
 ClientSampleId :
 S6-02-B



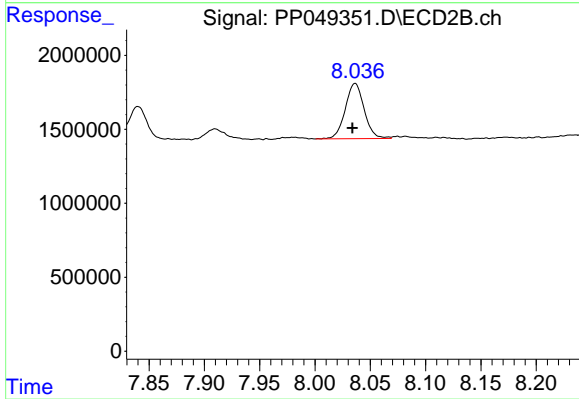
#43 AR-1268-3

R.T.: 7.750 min
 Delta R.T.: 0.002 min
 Response: 13680672
 Conc: 89.82 ng/ml



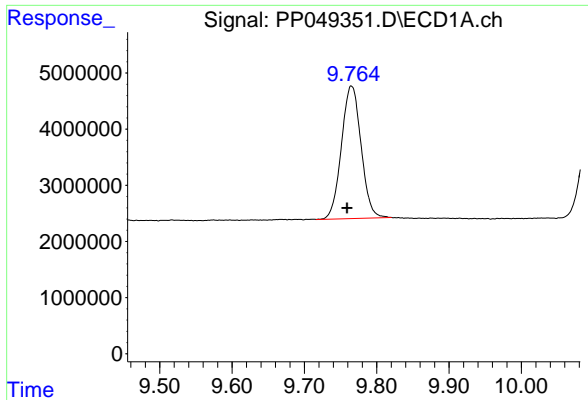
#44 AR-1268-4

R.T.: 9.355 min
 Delta R.T.: 0.005 min
 Response: 5334167
 Conc: 83.27 ng/ml



#44 AR-1268-4

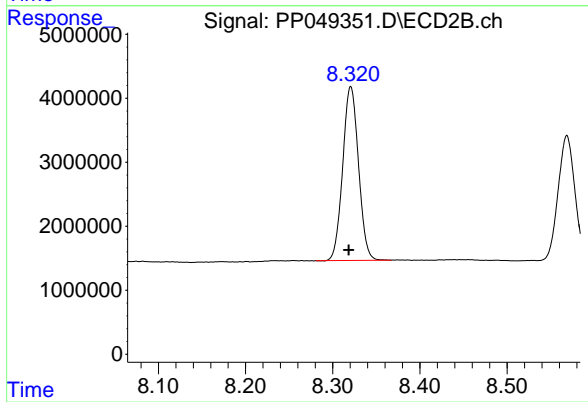
R.T.: 8.036 min
 Delta R.T.: 0.002 min
 Response: 4442535
 Conc: 69.71 ng/ml



#45 AR-1268-5

R.T.: 9.765 min
Delta R.T.: 0.006 min
Response: 44529330
Conc: 96.55 ng/ml

Instrument :
ECD_P
ClientSampleId :
S6-02-B



#45 AR-1268-5

R.T.: 8.321 min
Delta R.T.: 0.003 min
Response: 34134253
Conc: 85.55 ng/ml