

Data Path : Z:\pestpcbsrv\HPCHEM1\ECD_P\Data\PP071124\
 Data File : PP066278.D
 Signal(s) : Signal #1: ECD1A.ch Signal #2: ECD2B.ch
 Acq On : 11 Jul 2024 18:46
 Operator : YP\AJ
 Sample : P3209-01 10X
 Misc :
 ALS Vial : 17 Sample Multiplier: 1

Instrument :
 ECD_P
 ClientSampleId :
 BC216351-1-1

Integration File signal 1: autoint1.e
 Integration File signal 2: autoint2.e
 Quant Time: Jul 12 01:42:04 2024
 Quant Method : Z:\pestpcbsrv\HPCHEM1\ECD_P\methods\PP070124.M
 Quant Title : GC EXTRACTABLES
 QLast Update : Tue Jul 02 06:34:47 2024
 Response via : Initial Calibration
 Integrator: ChemStation

Volume Inj. : 2 µl
 Signal #1 Phase : ZB-MR1 Signal #2 Phase: ZB-MR2
 Signal #1 Info : 30Mx0.32mmx 0.50µ Signal #2 Info : 30M x 0.32mm x 0.25µm

Compound	RT#1	RT#2	Resp#1	Resp#2	ng/ml	ng/ml

System Monitoring Compounds						
1) SA Tetrachlo...	4.782	4.021	3569820	1959284	2.028	0.847 #
2) SA Decachlor...	10.724f	9.199	306.1E6	5551044	169.302m	4.880 #

Target Compounds

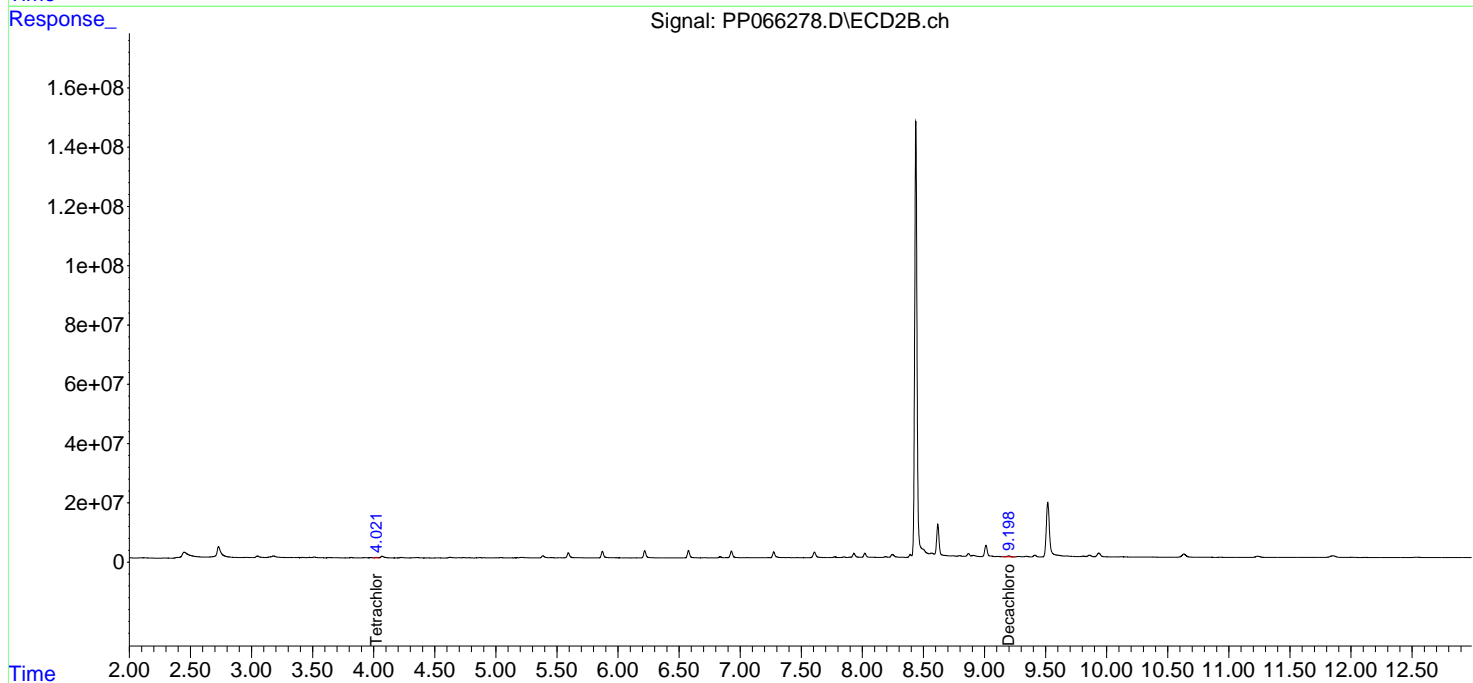
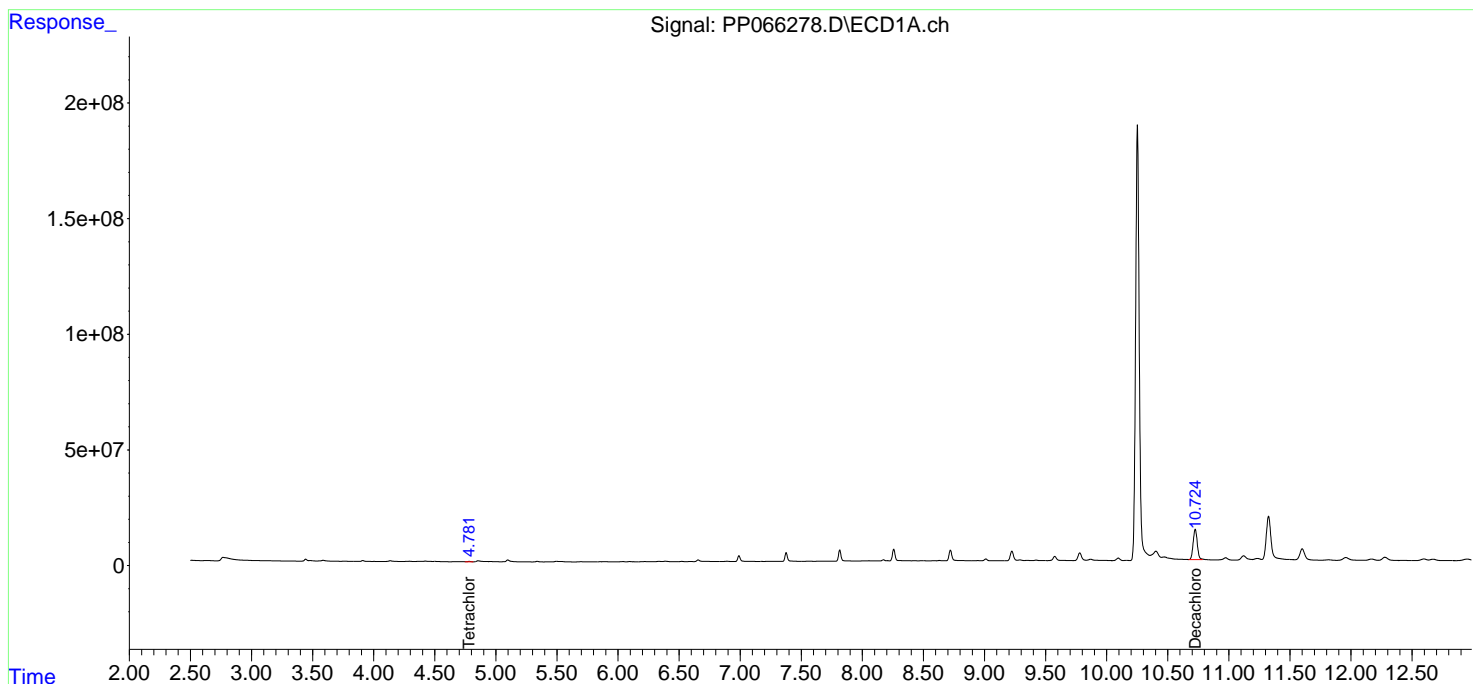
(f)=RT Delta > 1/2 Window (#)=Amounts differ by > 25% (m)=manual int.

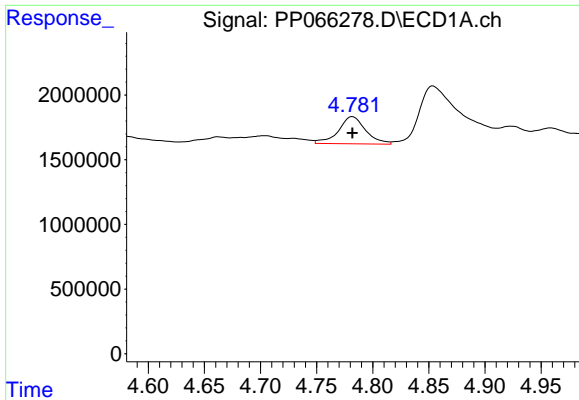
Data Path : Z:\pestpcbsrv\HPCHEM1\ECD_P\Data\PP071124\
 Data File : PP066278.D
 Signal(s) : Signal #1: ECD1A.ch Signal #2: ECD2B.ch
 Acq On : 11 Jul 2024 18:46
 Operator : YP\AJ
 Sample : P3209-01 10X
 Misc :
 ALS Vial : 17 Sample Multiplier: 1

Instrument :
 ECD_P
 ClientSampleId :
 BC216351-1-1

Integration File signal 1: autoint1.e
 Integration File signal 2: autoint2.e
 Quant Time: Jul 12 01:42:04 2024
 Quant Method : Z:\pestpcbsrv\HPCHEM1\ECD_P\methods\PP070124.M
 Quant Title : GC EXTRACTABLES
 QLast Update : Tue Jul 02 06:34:47 2024
 Response via : Initial Calibration
 Integrator: ChemStation

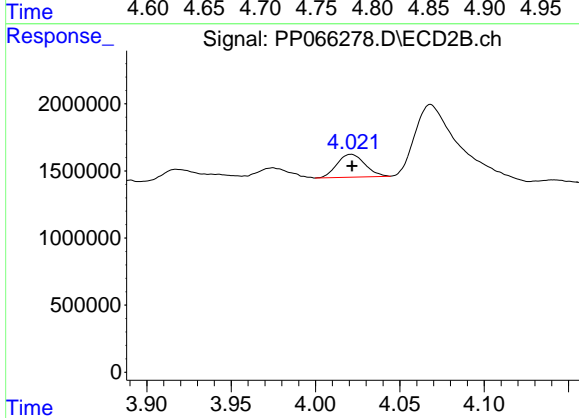
Volume Inj. : 2 µl
 Signal #1 Phase : ZB-MR1 Signal #2 Phase: ZB-MR2
 Signal #1 Info : 30Mx0.32mmx 0.50µm Signal #2 Info : 30M x 0.32mm x 0.25µm



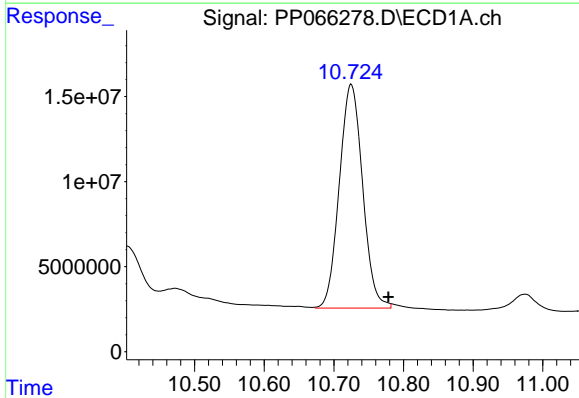


#1 Tetrachloro-m-xylene
 R.T.: 4.782 min
 Delta R.T.: 0.000 min
 Response: 3569820
 Conc: 2.03 ng/ml

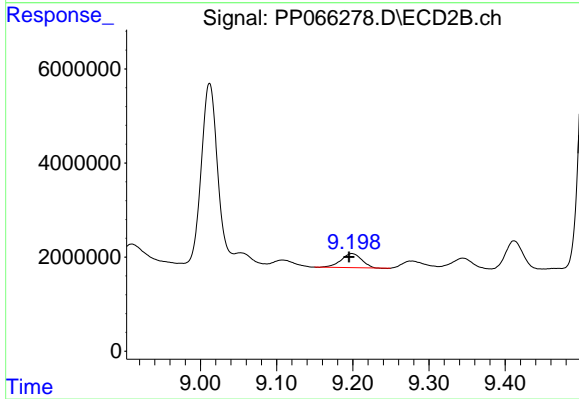
Instrument :
 ECD_P
 ClientSampleId :
 BC216351-1-1



#1 Tetrachloro-m-xylene
 R.T.: 4.021 min
 Delta R.T.: 0.000 min
 Response: 1959284
 Conc: 0.85 ng/ml



#2 Decachlorobiphenyl
 R.T.: 10.724 min
 Delta R.T.: -0.054 min
 Response: 306060283
 Conc: 169.30 ng/ml m



#2 Decachlorobiphenyl
 R.T.: 9.199 min
 Delta R.T.: 0.004 min
 Response: 5551044
 Conc: 4.88 ng/ml