

Data Path : Z:\pestpcbsrv\HPCHEM1\ECD_P\Data\PP071221\
 Data File : PP037218.D
 Signal(s) : Signal #1: ECD1A.CH Signal #2: ECD2B.CH
 Acq On : 12 Jul 2021 10:56
 Operator : DD\AJ
 Sample : M2993-03DL 100X
 Misc :
 ALS Vial : 9 Sample Multiplier: 1

Instrument :
 ECD_P
ClientSampleId :
 P001-B47C04-01DL

Manual Integrations
APPROVED
 mohammad
 7/13/2021 10:42:58 AM

Integration File signal 1: autoint1.e
 Integration File signal 2: autoint2.e
 Quant Time: Jul 12 15:12:16 2021
 Quant Method : Z:\pestpcbsrv\HPCHEM1\ECD_P\methods\PP070621.M
 Quant Title : GC EXTRACTABLES
 QLast Update : Wed Jul 07 08:32:32 2021
 Response via : Initial Calibration
 Integrator: ChemStation 6890 Scale Mode: Small noise peaks clipped

Volume Inj. : 2 µl
 Signal #1 Phase : ZB-MR1 Signal #2 Phase: ZB-MR2
 Signal #1 Info : 30Mx0.32mmx 0.50µ Signal #2 Info : 30M x 0.32mm x 0.25µm

Compound	RT#1	RT#2	Resp#1	Resp#2	ng/ml	ng/ml

System Monitoring Compounds						
Target Compounds						
21) L5 AR-1248-1	6.276	5.198	1117131	685109	1064.366	1085.635
22) L5 AR-1248-2	6.571	5.461	1152318	708689	776.206	863.970
23) L5 AR-1248-3	6.788	5.506	1833946	818683	1110.269	956.658
24) L5 AR-1248-4	7.217	5.688	1922825	1215969	1017.309	1194.851
25) L5 AR-1248-5	7.256	6.111	1955615	1204415	1044.887	1135.442
26) L6 AR-1254-1	7.185	6.068	1681209	1725780	935.827m	1162.476
27) L6 AR-1254-2	7.420	6.228	2538636	592410	912.628	456.050 #
28) L6 AR-1254-3	7.797	6.648	1482624	1044676	480.900	489.532
29) L6 AR-1254-4	8.094	6.888	940909	576988	414.234	425.278
30) L6 AR-1254-5	8.522	7.318	728783	598959	291.234	319.506

(f)=RT Delta > 1/2 Window (#)=Amounts differ by > 25% (m)=manual int.

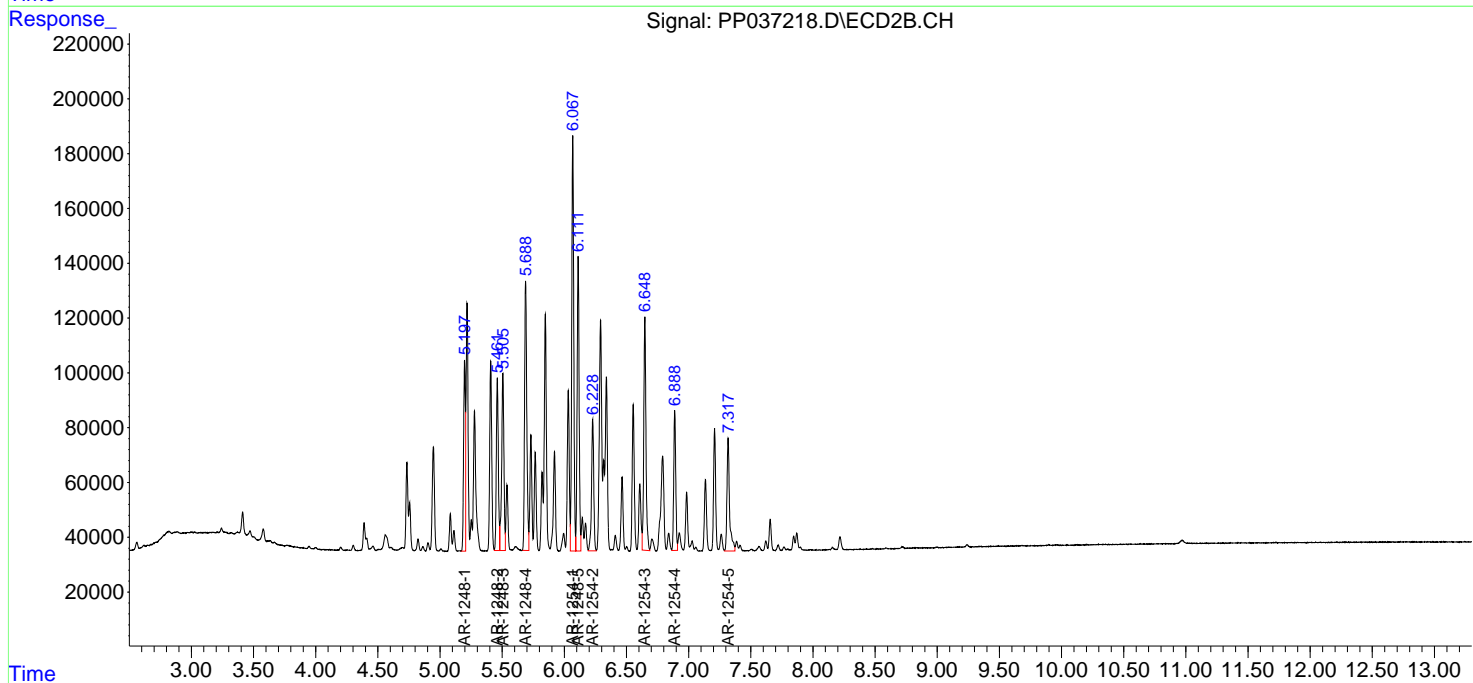
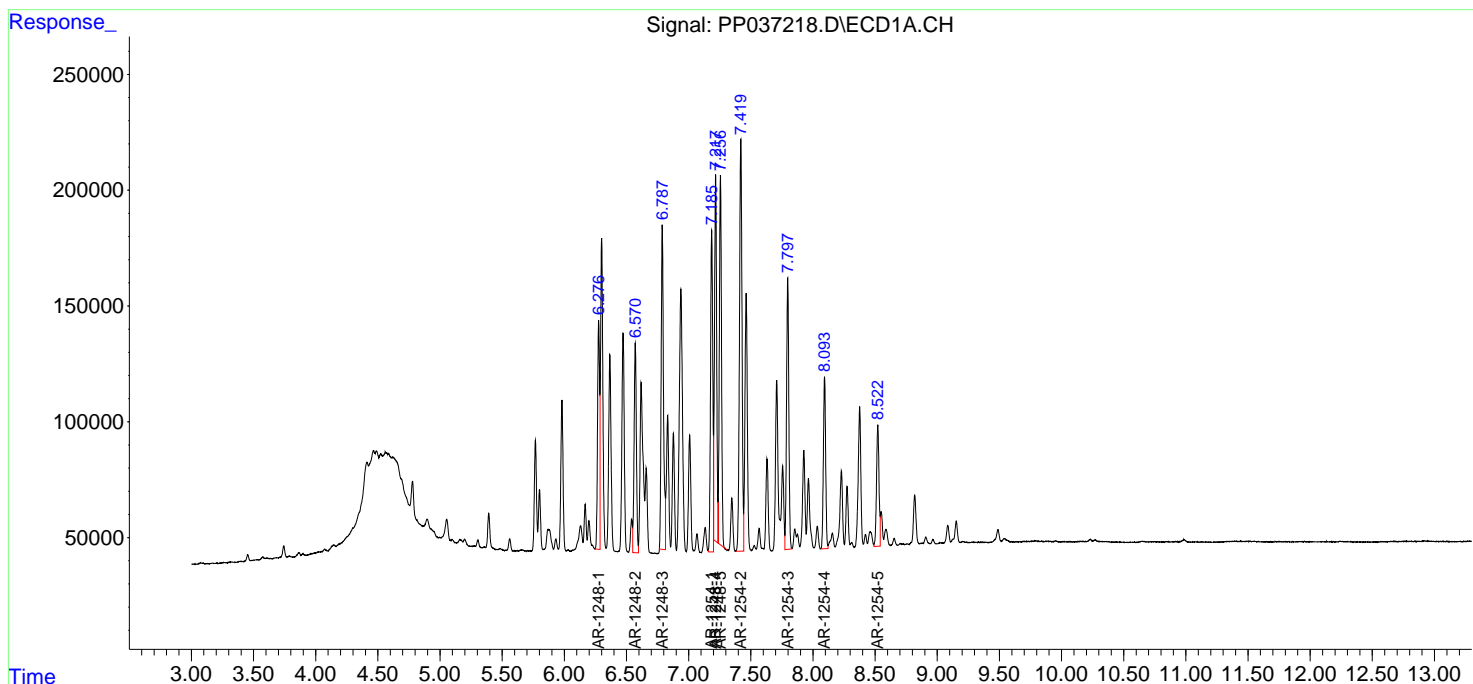
Data Path : Z:\pestpcbsrv\HPCHEM1\ECD_P\Data\PP071221\
 Data File : PP037218.D
 Signal(s) : Signal #1: ECD1A.CH Signal #2: ECD2B.CH
 Acq On : 12 Jul 2021 10:56
 Operator : DD\AJ
 Sample : M2993-03DL 100X
 Misc :
 ALS Vial : 9 Sample Multiplier: 1

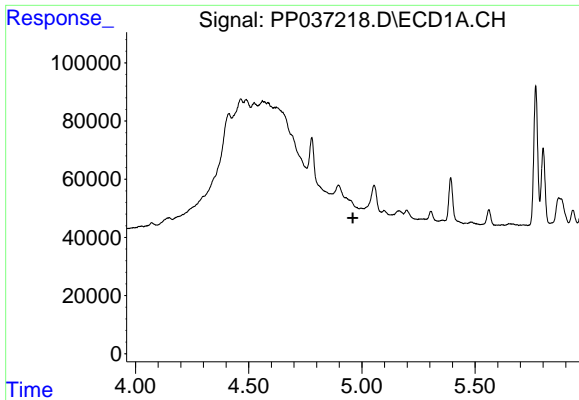
Instrument :
 ECD_P
Client Sampled :
 P001-B47C04-01DL

Manual Integrations
APPROVED
 mohammad
 7/13/2021 10:42:58 AM

Integration File signal 1: autoint1.e
 Integration File signal 2: autoint2.e
 Quant Time: Jul 12 15:12:16 2021
 Quant Method : Z:\pestpcbsrv\HPCHEM1\ECD_P\methods\PP070621.M
 Quant Title : GC EXTRACTABLES
 QLast Update : Wed Jul 07 08:32:32 2021
 Response via : Initial Calibration
 Integrator: ChemStation 6890 Scale Mode: Small noise peaks clipped

Volume Inj. : 2 µl
 Signal #1 Phase : ZB-MR1 Signal #2 Phase: ZB-MR2
 Signal #1 Info : 30Mx0.32mmx 0.50µ Signal #2 Info : 30M x 0.32mm x 0.25µm

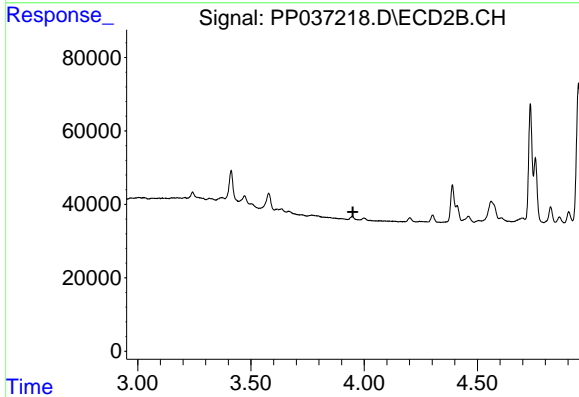




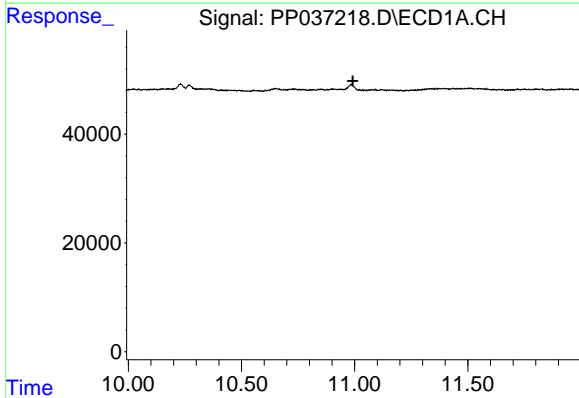
#1 Tetrachloro-m-xylene
 R.T.: 0.000 min
 Exp R.T. : 4.960 min
 Response: 0
 Conc: N.D.

Instrument :
 ECD_P
 ClientSampleId :
 P001-B47C04-01DL

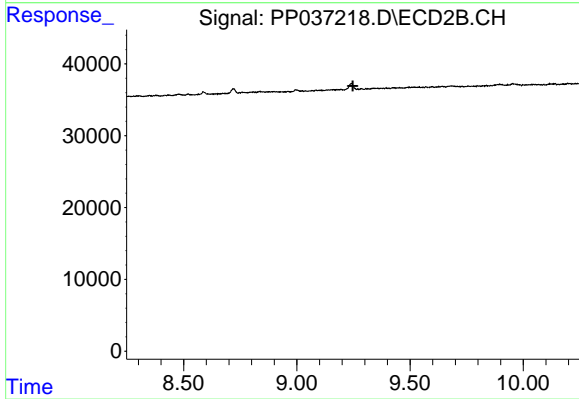
Manual Integrations
 APPROVED
 mohammad
 7/13/2021 10:42:58 AM



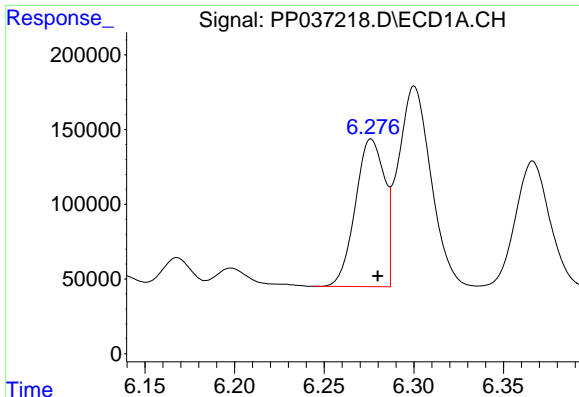
#1 Tetrachloro-m-xylene
 R.T.: 0.000 min
 Exp R.T. : 3.950 min
 Response: 0
 Conc: N.D.



#2 Decachlorobiphenyl
 R.T.: 0.000 min
 Exp R.T. : 10.992 min
 Response: 0
 Conc: N.D.



#2 Decachlorobiphenyl
 R.T.: 0.000 min
 Exp R.T. : 9.247 min
 Response: 0
 Conc: N.D.

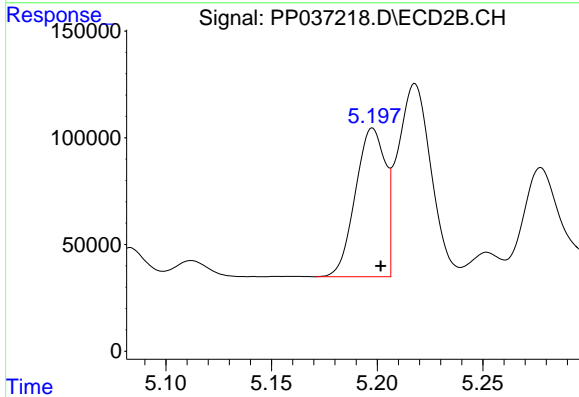


#21 AR-1248-1

R.T.: 6.276 min
 Delta R.T.: -0.004 min
 Response: 1117131
 Conc: 1064.37 ng/ml

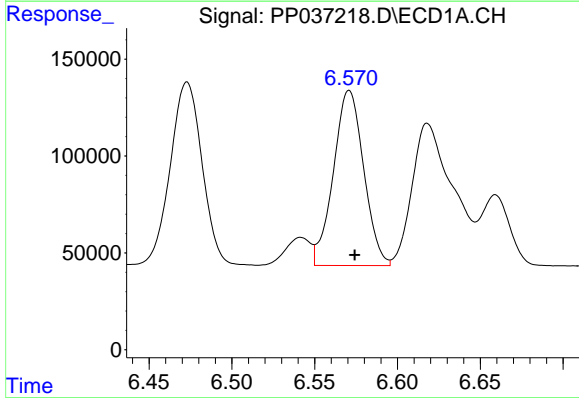
Instrument :
 ECD_P
ClientSampled :
 P001-B47C04-01DL

Manual Integrations
APPROVED
 mohammad
 7/13/2021 10:42:58 AM



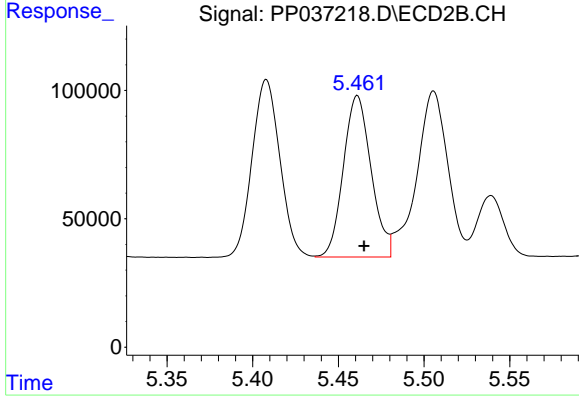
#21 AR-1248-1

R.T.: 5.198 min
 Delta R.T.: -0.004 min
 Response: 685109
 Conc: 1085.64 ng/ml



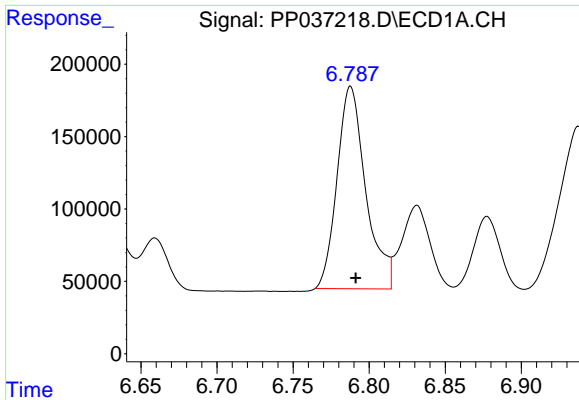
#22 AR-1248-2

R.T.: 6.571 min
 Delta R.T.: -0.003 min
 Response: 1152318
 Conc: 776.21 ng/ml



#22 AR-1248-2

R.T.: 5.461 min
 Delta R.T.: -0.004 min
 Response: 708689
 Conc: 863.97 ng/ml

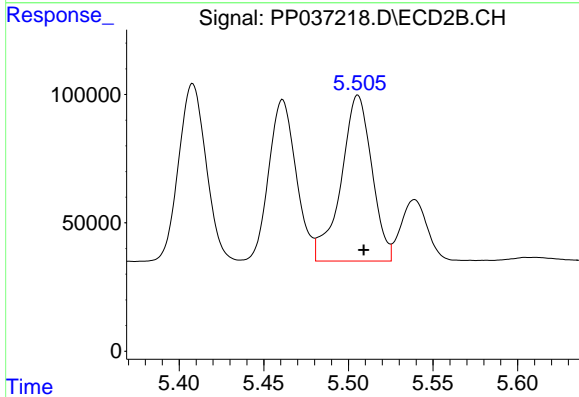


#23 AR-1248-3

R.T.: 6.788 min
 Delta R.T.: -0.003 min
 Response: 1833946
 Conc: 1110.27 ng/ml

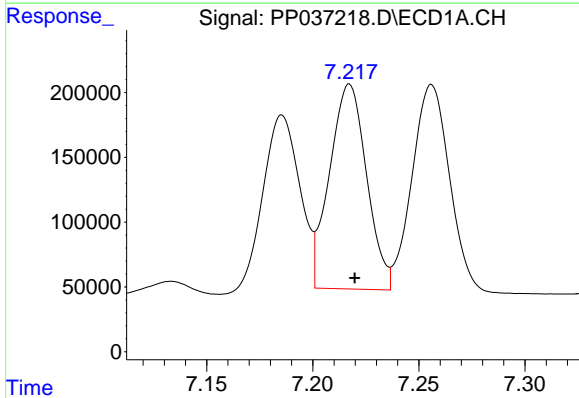
Instrument :
 ECD_P
 ClientSampleID :
 P001-B47C04-01DL

Manual Integrations
 APPROVED
 mohammad
 7/13/2021 10:42:58 AM



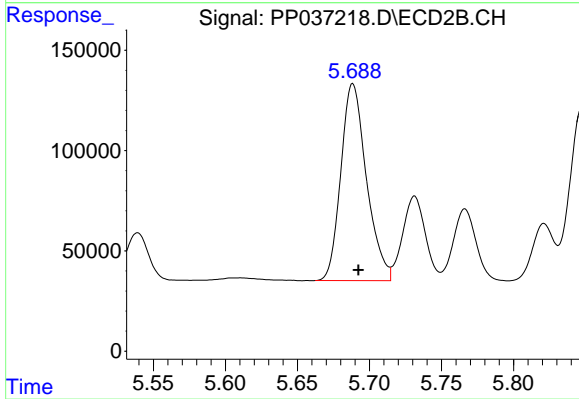
#23 AR-1248-3

R.T.: 5.506 min
 Delta R.T.: -0.003 min
 Response: 818683
 Conc: 956.66 ng/ml



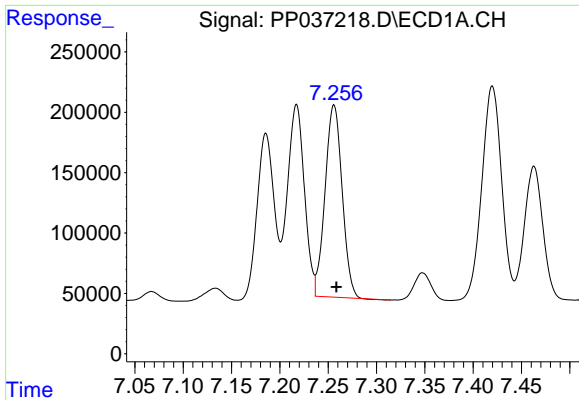
#24 AR-1248-4

R.T.: 7.217 min
 Delta R.T.: -0.003 min
 Response: 1922825
 Conc: 1017.31 ng/ml



#24 AR-1248-4

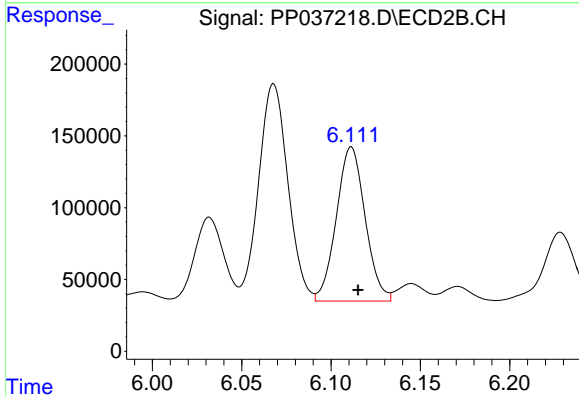
R.T.: 5.688 min
 Delta R.T.: -0.004 min
 Response: 1215969
 Conc: 1194.85 ng/ml



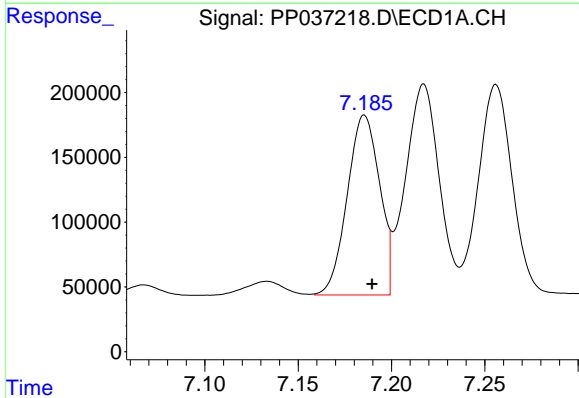
#25 AR-1248-5
 R.T.: 7.256 min
 Delta R.T.: -0.003 min
 Response: 1955615
 Conc: 1044.89 ng/ml

Instrument :
 ECD_P
ClientSampleID :
 P001-B47C04-01DL

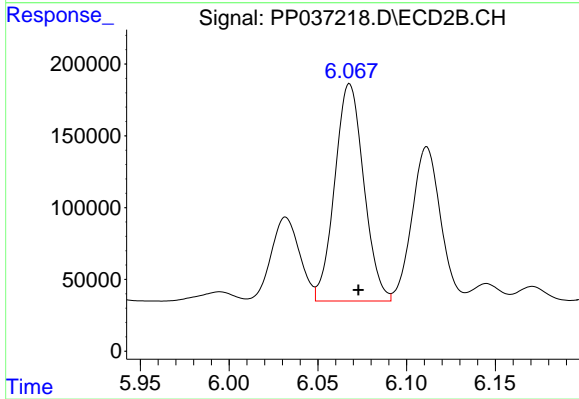
Manual Integrations
APPROVED
 mohammad
 7/13/2021 10:42:58 AM



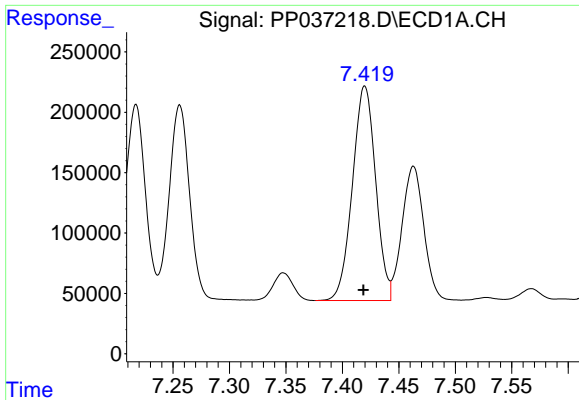
#25 AR-1248-5
 R.T.: 6.111 min
 Delta R.T.: -0.004 min
 Response: 1204415
 Conc: 1135.44 ng/ml



#26 AR-1254-1
 R.T.: 7.185 min
 Delta R.T.: -0.005 min
 Response: 1681209
 Conc: 935.83 ng/ml m



#26 AR-1254-1
 R.T.: 6.068 min
 Delta R.T.: -0.005 min
 Response: 1725780
 Conc: 1162.48 ng/ml

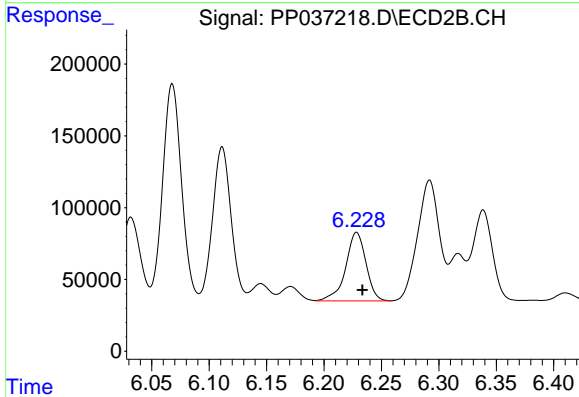


#27 AR-1254-2

R.T.: 7.420 min
 Delta R.T.: 0.001 min
 Response: 2538636
 Conc: 912.63 ng/ml

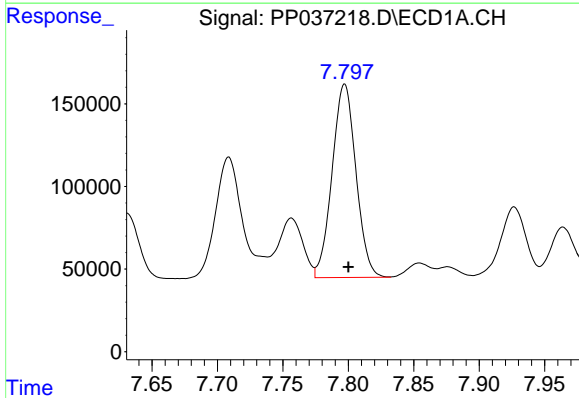
Instrument :
 ECD_P
 ClientSampleId :
 P001-B47C04-01DL

Manual Integrations
APPROVED
 mohammad
 7/13/2021 10:42:58 AM



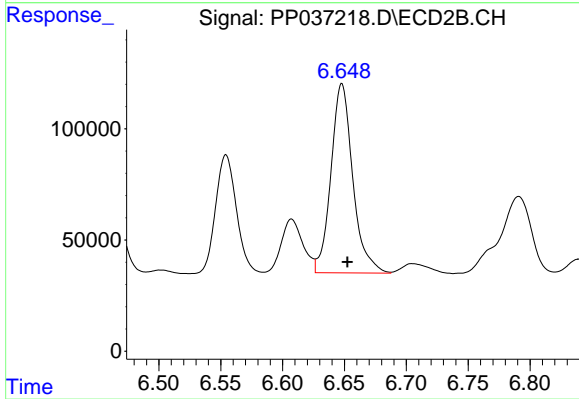
#27 AR-1254-2

R.T.: 6.228 min
 Delta R.T.: -0.005 min
 Response: 592410
 Conc: 456.05 ng/ml



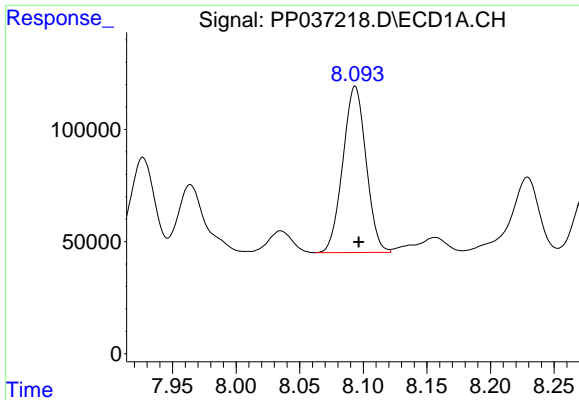
#28 AR-1254-3

R.T.: 7.797 min
 Delta R.T.: -0.003 min
 Response: 1482624
 Conc: 480.90 ng/ml



#28 AR-1254-3

R.T.: 6.648 min
 Delta R.T.: -0.005 min
 Response: 1044676
 Conc: 489.53 ng/ml



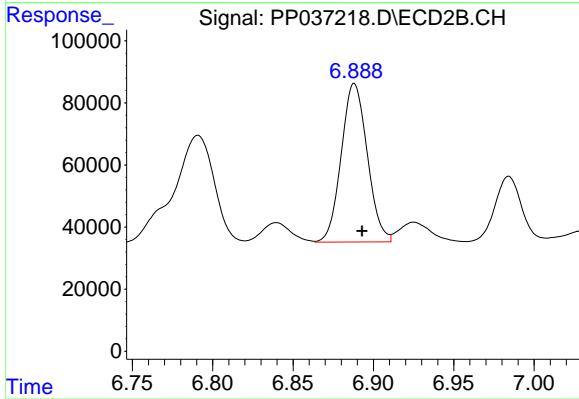
#29 AR-1254-4

R.T.: 8.094 min
 Delta R.T.: -0.003 min
 Response: 940909
 Conc: 414.23 ng/ml

Instrument :
 ECD_P
 ClientSampleID :
 P001-B47C04-01DL

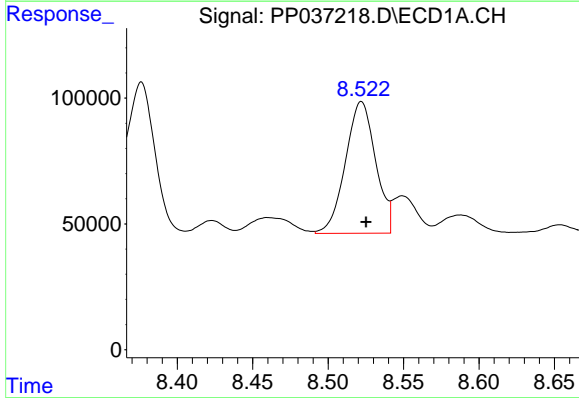
Manual Integrations
 APPROVED

mohammad
 7/13/2021 10:42:58 AM



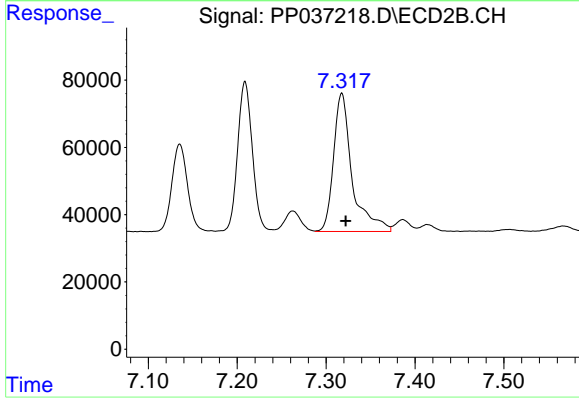
#29 AR-1254-4

R.T.: 6.888 min
 Delta R.T.: -0.005 min
 Response: 576988
 Conc: 425.28 ng/ml



#30 AR-1254-5

R.T.: 8.522 min
 Delta R.T.: -0.003 min
 Response: 728783
 Conc: 291.23 ng/ml



#30 AR-1254-5

R.T.: 7.318 min
 Delta R.T.: -0.005 min
 Response: 598959
 Conc: 319.51 ng/ml