

Data Path : Z:\pestpcbsrv\HPCHEM1\ECD_P\Data\PP071222\
 Data File : PP049395.D
 Signal(s) : Signal #1: ECD1A.ch Signal #2: ECD2B.ch
 Acq On : 12 Jul 2022 15:43
 Operator : YP\AJ
 Sample : N3666-04
 Misc :
 ALS Vial : 18 Sample Multiplier: 1

Instrument :
 ECD_P
 ClientSampleId :

Integration File signal 1: autoint1.e
 Integration File signal 2: autoint2.e
 Quant Time: Jul 13 04:58:46 2022
 Quant Method : Z:\pestpcbsrv\HPCHEM1\ECD_P\methods\PP062822.M
 Quant Title : GC EXTRACTABLES
 QLast Update : Wed Jun 29 09:37:18 2022
 Response via : Initial Calibration
 Integrator: ChemStation

Volume Inj. : 2 µl
 Signal #1 Phase : ZB-MR1 Signal #2 Phase: ZB-MR2
 Signal #1 Info : 30Mx0.32mmx 0.50µ Signal #2 Info : 30M x 0.32mm x 0.25µm

Compound	RT#1	RT#2	Resp#1	Resp#2	ng/ml	ng/ml
System Monitoring Compounds						
1) SA Tetrachlo...	4.343	3.594	25119884	44541648	17.671	17.395
2) SA Decachlor...	10.094	8.567	22425660	19781374	18.283	17.549
Target Compounds						
3) L1 AR-1016-1	5.545f	0.000	243850	0	4.638	N.D. #
4) L1 AR-1016-2	5.545	0.000	243850	0	3.236	N.D. #
5) L1 AR-1016-3	5.605	0.000	24967	0	0.513	N.D. #
7) L1 AR-1016-5	0.000	5.102	0	148124	N.D.	1.986 #
8) L2 AR-1221-1	4.565	0.000	2800251	0	164.264	N.D. #
9) L2 AR-1221-2	4.650	3.878	408270	2006338	31.936	78.156 #
10) L2 AR-1221-3	4.738	0.000	203828	0	5.151	N.D. #
11) L3 AR-1232-1	4.738	0.000	203828	0	5.361	N.D. #
12) L3 AR-1232-2	5.250	0.000	479324	0	25.358	N.D. #
13) L3 AR-1232-3	5.545	0.000	243850	0	6.597	N.D. #
15) L3 AR-1232-5	5.792	5.102f	127788	148124	8.194	4.137 #
16) L4 AR-1242-1	5.545f	0.000	243850	0	6.017	N.D. #
17) L4 AR-1242-2	5.545	0.000	243850	0	4.234	N.D. #
18) L4 AR-1242-3	5.605	0.000	24967	0	0.690	N.D. #
20) L4 AR-1242-5	6.432	5.466	37026	163853	1.110	2.354 #
21) L5 AR-1248-1	5.545f	0.000	243850	0	7.583	N.D. #
22) L5 AR-1248-2	5.792	0.000	127788	0	2.749	N.D. #
24) L5 AR-1248-4	6.413	5.102	102240	148124	1.654	1.502
25) L5 AR-1248-5	6.432	0.000	37026	0	0.642	N.D. #
26) L6 AR-1254-1	6.380	5.466	110229	163853	1.635	1.116 #
27) L6 AR-1254-2	6.597	5.613	478020	406372	5.097	3.257 #
28) L6 AR-1254-3	6.968	6.016	603775	852208	5.950	4.733
29) L6 AR-1254-4	7.255	6.240	298639	632120	3.981	5.843 #
30) L6 AR-1254-5	7.675	6.657	1358470	1957743	16.102	13.489
31) L7 AR-1260-1	7.128	6.144	520418	593798	7.154	5.154 #
32) L7 AR-1260-2	7.388	6.330	757909	1074694	9.005	8.012
33) L7 AR-1260-3	7.746	6.486	1379351	863465	24.655	7.093 #
34) L7 AR-1260-4	7.989	6.952	2110551	2512523	30.179	29.779
35) L7 AR-1260-5	8.294	7.195	1022646	899390	7.463	4.771 #
36) L8 AR-1262-1	7.746	6.696	1379351	1780726	14.716	13.386
37) L8 AR-1262-2	8.294	6.952	1022646	2512523	5.976	22.172 #
38) L8 AR-1262-3	8.599	7.478	7684190	8551272	102.685	104.952
39) L8 AR-1262-4	8.696	7.542	5220064	5742478	111.215	39.395 #
40) L8 AR-1262-5	9.352	8.035	2224259	1588628	36.788	26.338 #
41) L9 AR-1268-1	8.599	7.478	7684190	8551272	40.917	39.750
42) L9 AR-1268-2	8.696	7.542	5220064	5742478	29.835	30.020
43) L9 AR-1268-3	8.919	7.748	5554412	5546980	38.774	36.420
44) L9 AR-1268-4	9.352	8.035	2224259	1588628	34.721	24.927 #
45) L9 AR-1268-5	9.761	8.318	15947892	13699609	34.577	34.334

Data Path : Z:\pestpcbsrv\HPCHEM1\ECD_P\Data\PP071222\
 Data File : PP049395.D
 Signal(s) : Signal #1: ECD1A.ch Signal #2: ECD2B.ch
 Acq On : 12 Jul 2022 15:43
 Operator : YP\AJ
 Sample : N3666-04
 Misc :
 ALS Vial : 18 Sample Multiplier: 1

Instrument :
 ECD_P
 ClientSampleId :

Integration File signal 1: autoint1.e
 Integration File signal 2: autoint2.e
 Quant Time: Jul 13 04:58:46 2022
 Quant Method : Z:\pestpcbsrv\HPCHEM1\ECD_P\methods\PP062822.M
 Quant Title : GC EXTRACTABLES
 QLast Update : Wed Jun 29 09:37:18 2022
 Response via : Initial Calibration
 Integrator: ChemStation

Volume Inj. : 2 µl
 Signal #1 Phase : ZB-MR1 Signal #2 Phase: ZB-MR2
 Signal #1 Info : 30Mx0.32mmx 0.50µ Signal #2 Info : 30M x 0.32mm x 0.25µm

Compound	RT#1	RT#2	Resp#1	Resp#2	ng/ml	ng/ml

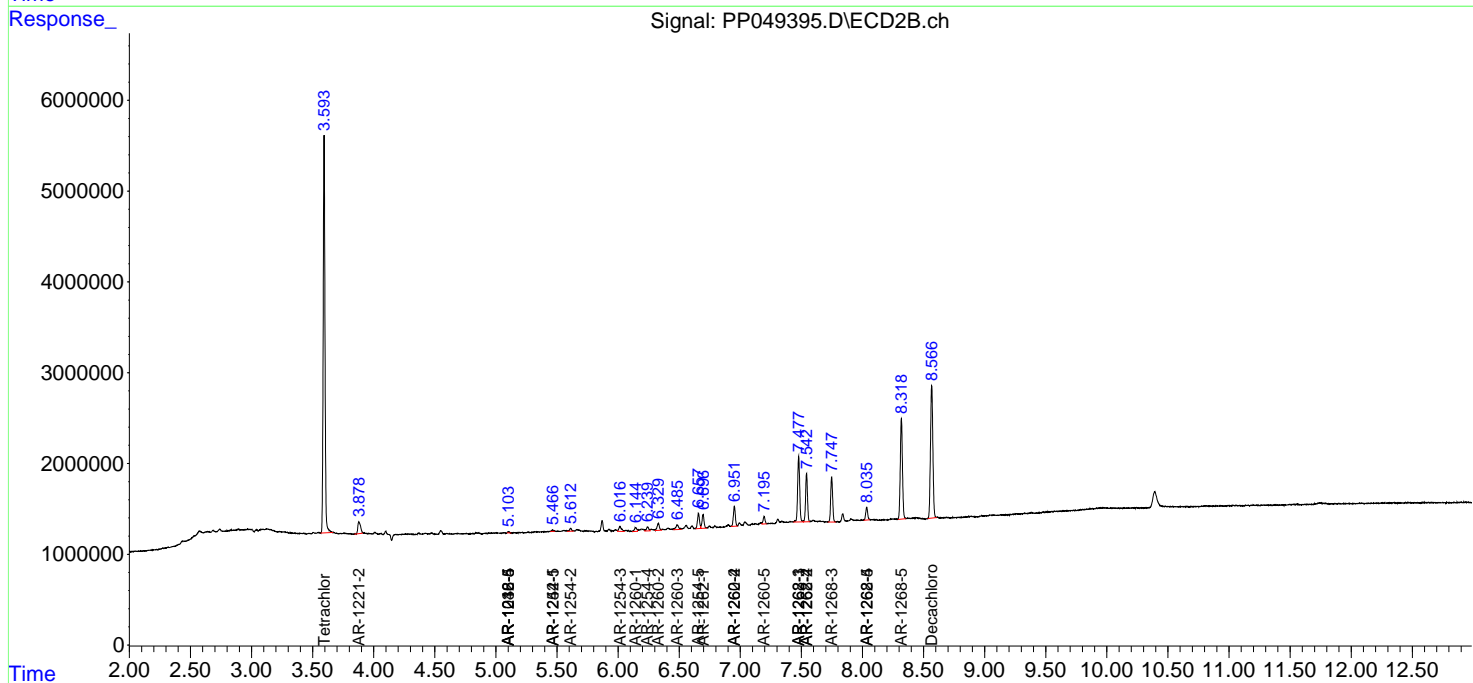
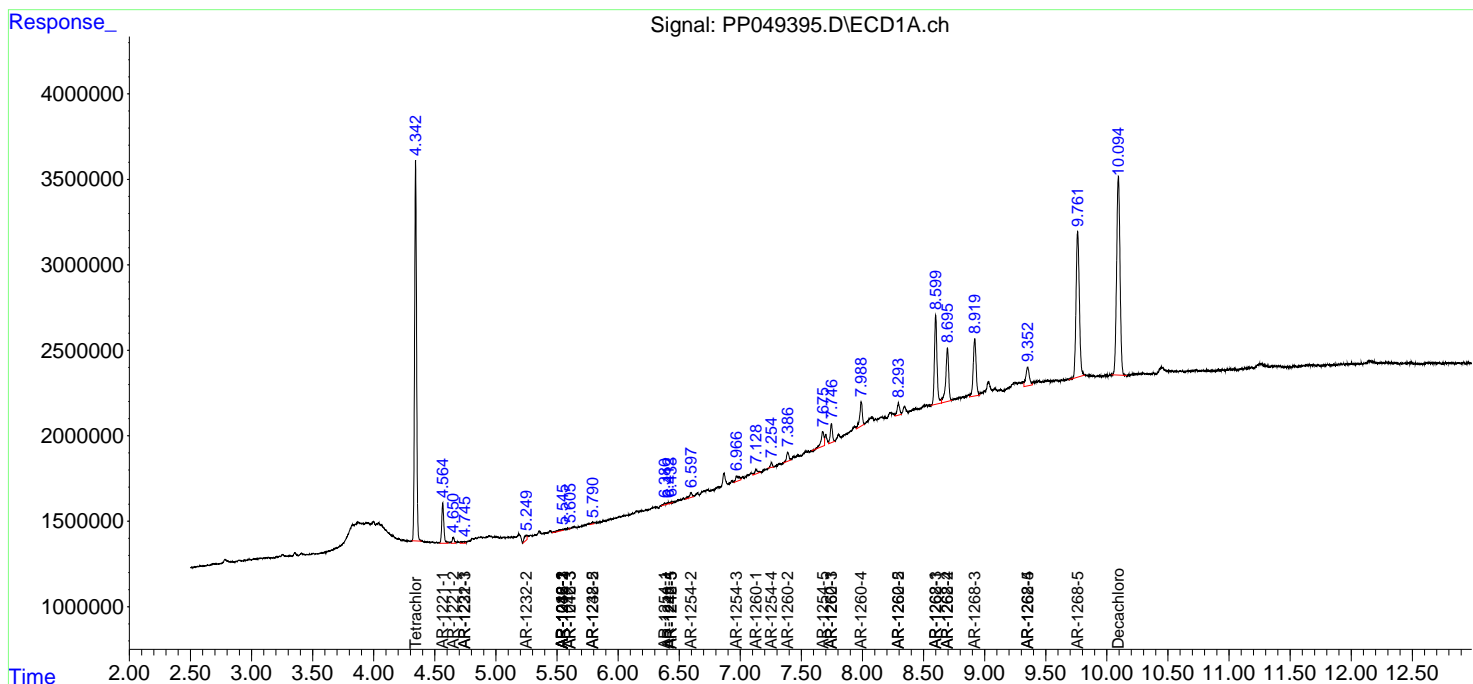
(f)=RT Delta > 1/2 Window (#)=Amounts differ by > 25% (m)=manual int.

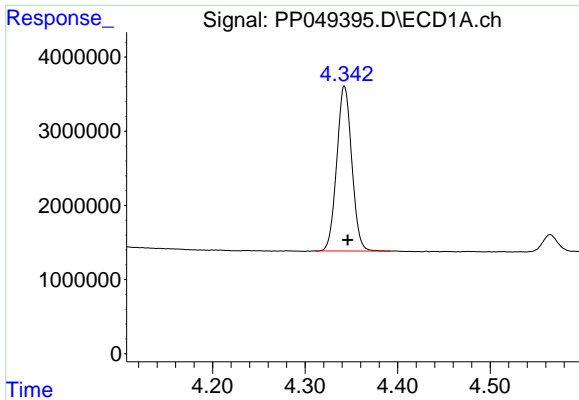
Data Path : Z:\pestpcbsrv\HPCHEM1\ECD_P\Data\PP071222\
 Data File : PP049395.D
 Signal(s) : Signal #1: ECD1A.ch Signal #2: ECD2B.ch
 Acq On : 12 Jul 2022 15:43
 Operator : YP\AJ
 Sample : N3666-04
 Misc :
 ALS Vial : 18 Sample Multiplier: 1

Instrument :
 ECD_P
 ClientSampleId :

Integration File signal 1: autoint1.e
 Integration File signal 2: autoint2.e
 Quant Time: Jul 13 04:58:46 2022
 Quant Method : Z:\pestpcbsrv\HPCHEM1\ECD_P\methods\PP062822.M
 Quant Title : GC EXTRACTABLES
 QLast Update : Wed Jun 29 09:37:18 2022
 Response via : Initial Calibration
 Integrator: ChemStation

Volume Inj. : 2 µl
 Signal #1 Phase : ZB-MR1 Signal #2 Phase: ZB-MR2
 Signal #1 Info : 30Mx0.32mmx 0.50µ Signal #2 Info : 30M x 0.32mm x 0.25µm

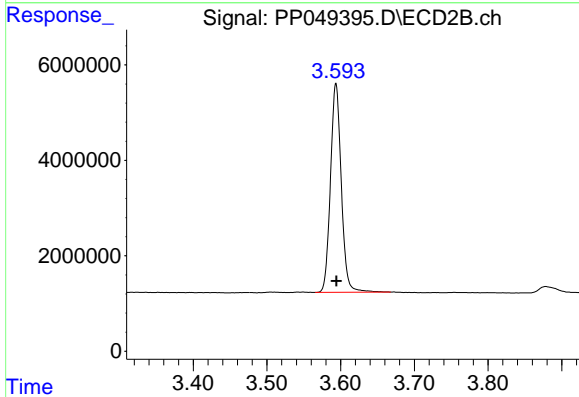




#1 Tetrachloro-m-xylene

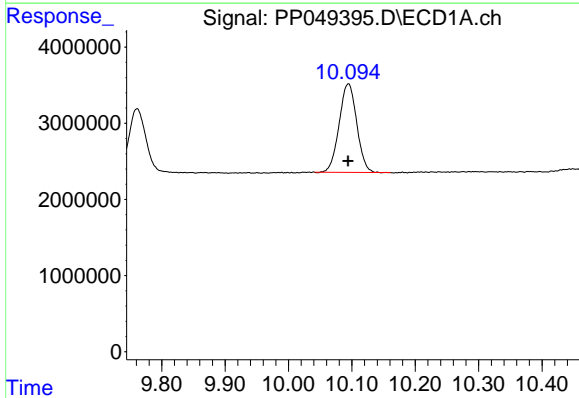
R.T.: 4.343 min
 Delta R.T.: -0.003 min
 Response: 25119884
 Conc: 17.67 ng/ml

Instrument :
 ECD_P
 ClientSampleId :



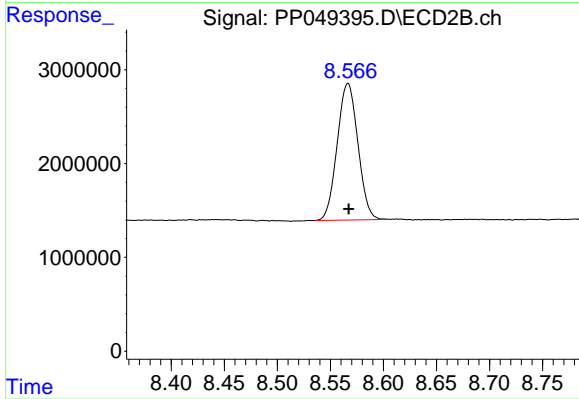
#1 Tetrachloro-m-xylene

R.T.: 3.594 min
 Delta R.T.: 0.000 min
 Response: 44541648
 Conc: 17.39 ng/ml



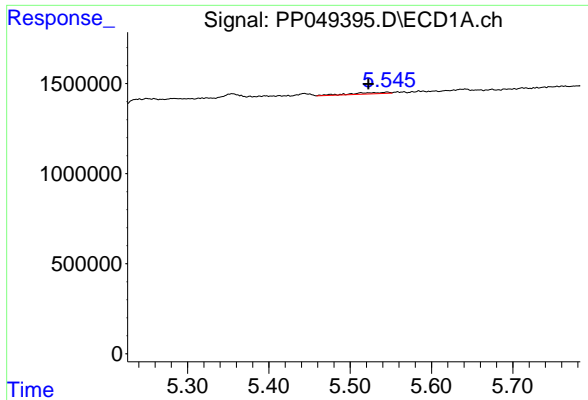
#2 Decachlorobiphenyl

R.T.: 10.094 min
 Delta R.T.: 0.000 min
 Response: 22425660
 Conc: 18.28 ng/ml



#2 Decachlorobiphenyl

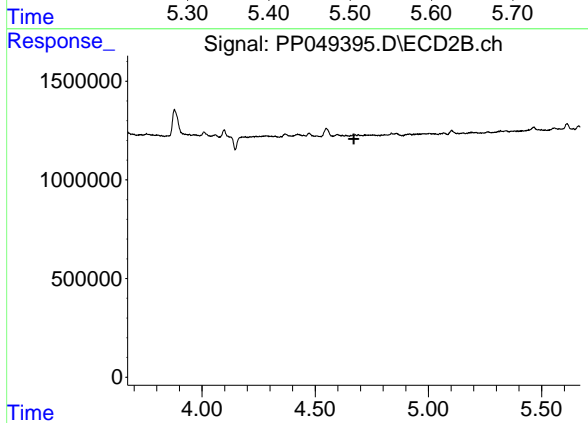
R.T.: 8.567 min
 Delta R.T.: 0.000 min
 Response: 19781374
 Conc: 17.55 ng/ml



#3 AR-1016-1

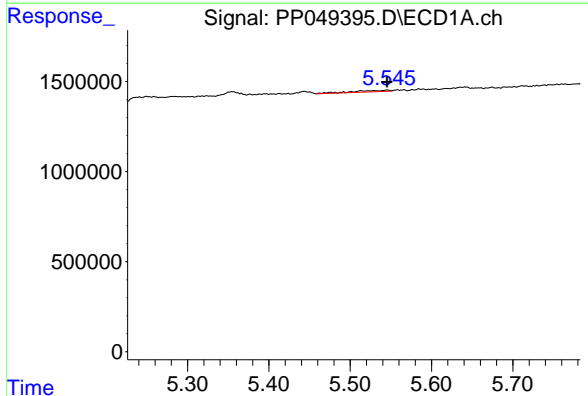
R.T.: 5.545 min
 Delta R.T.: 0.023 min
 Response: 243850
 Conc: 4.64 ng/ml

Instrument :
 ECD_P
 ClientSampleId :



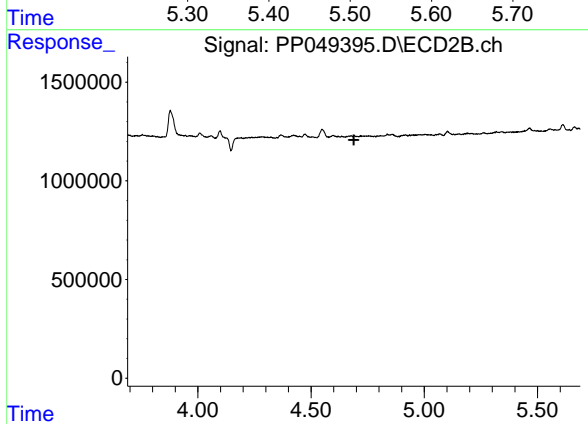
#3 AR-1016-1

R.T.: 0.000 min
 Exp R.T. : 4.670 min
 Response: 0
 Conc: N.D.



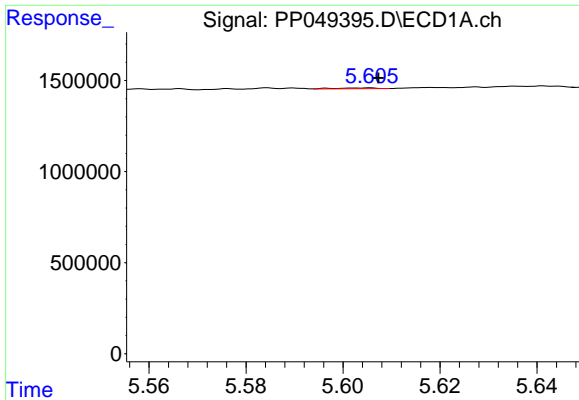
#4 AR-1016-2

R.T.: 5.545 min
 Delta R.T.: 0.000 min
 Response: 243850
 Conc: 3.24 ng/ml



#4 AR-1016-2

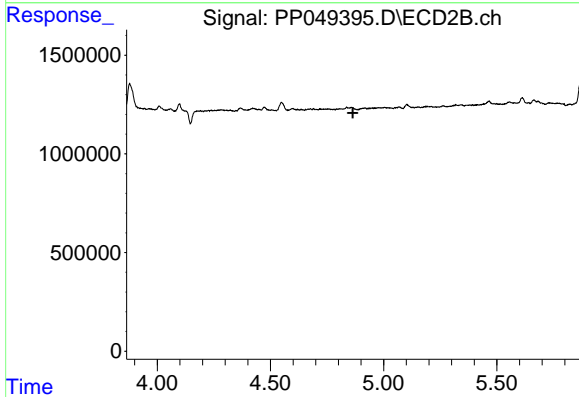
R.T.: 0.000 min
 Exp R.T. : 4.689 min
 Response: 0
 Conc: N.D.



#5 AR-1016-3

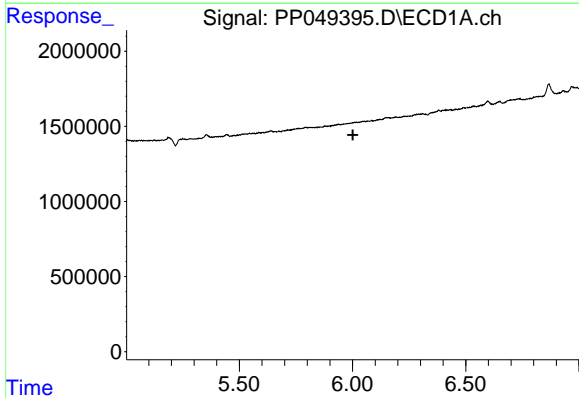
R.T.: 5.605 min
 Delta R.T.: -0.003 min
 Response: 24967
 Conc: 0.51 ng/ml

Instrument :
 ECD_P
 ClientSampleId :



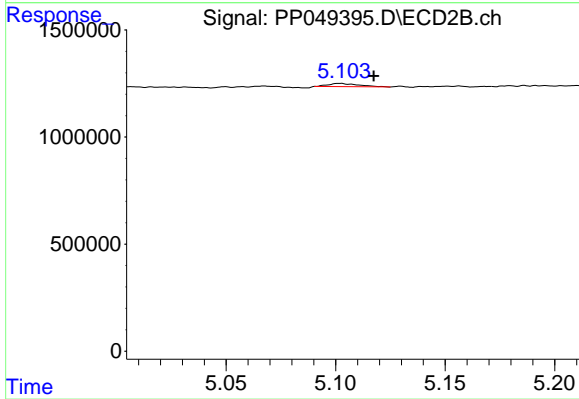
#5 AR-1016-3

R.T.: 0.000 min
 Exp R.T. : 4.864 min
 Response: 0
 Conc: N.D.



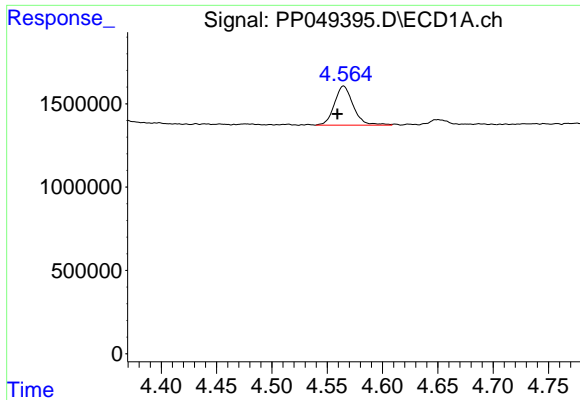
#7 AR-1016-5

R.T.: 0.000 min
 Exp R.T. : 6.001 min
 Response: 0
 Conc: N.D.



#7 AR-1016-5

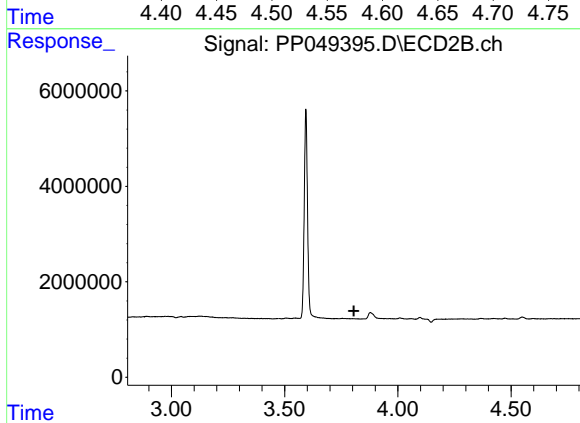
R.T.: 5.102 min
 Delta R.T.: -0.015 min
 Response: 148124
 Conc: 1.99 ng/ml



#8 AR-1221-1

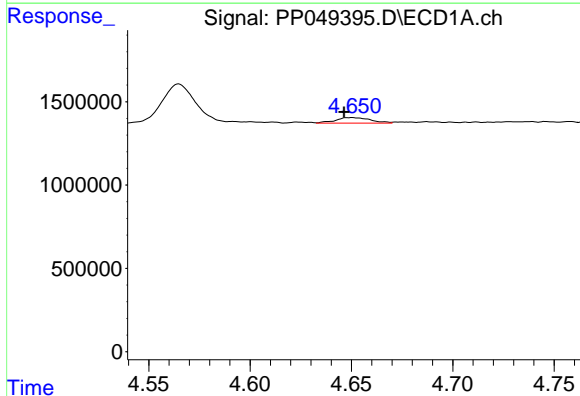
R.T.: 4.565 min
 Delta R.T.: 0.006 min
 Response: 2800251
 Conc: 164.26 ng/ml

Instrument :
 ECD_P
 ClientSampleId :



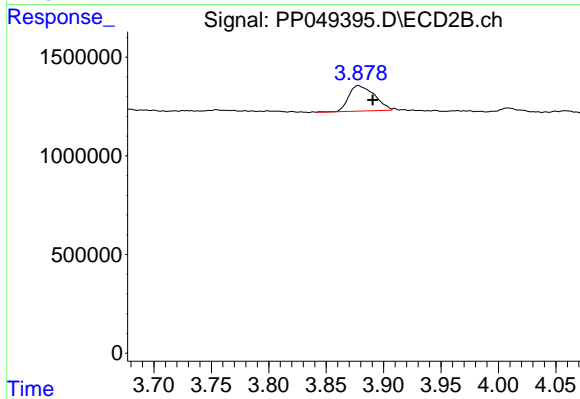
#8 AR-1221-1

R.T.: 0.000 min
 Exp R.T. : 3.806 min
 Response: 0
 Conc: N.D.



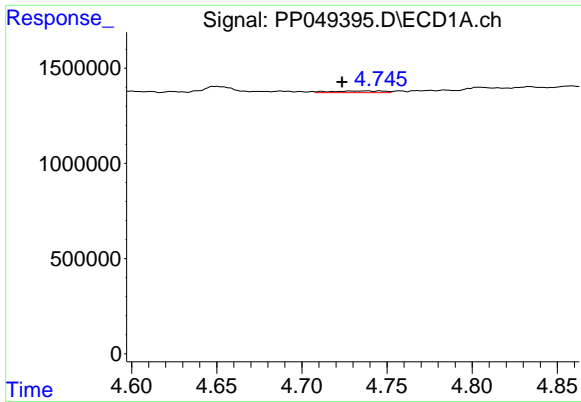
#9 AR-1221-2

R.T.: 4.650 min
 Delta R.T.: 0.003 min
 Response: 408270
 Conc: 31.94 ng/ml



#9 AR-1221-2

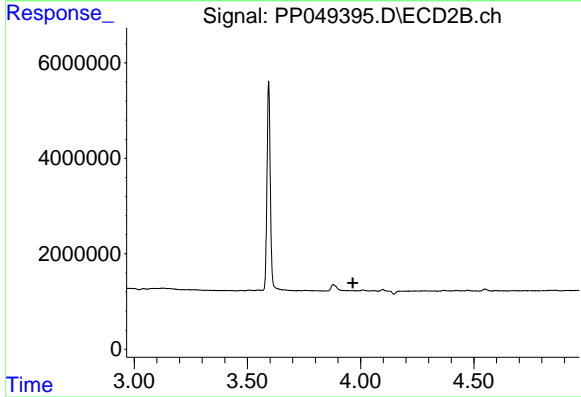
R.T.: 3.878 min
 Delta R.T.: -0.012 min
 Response: 2006338
 Conc: 78.16 ng/ml



#10 AR-1221-3

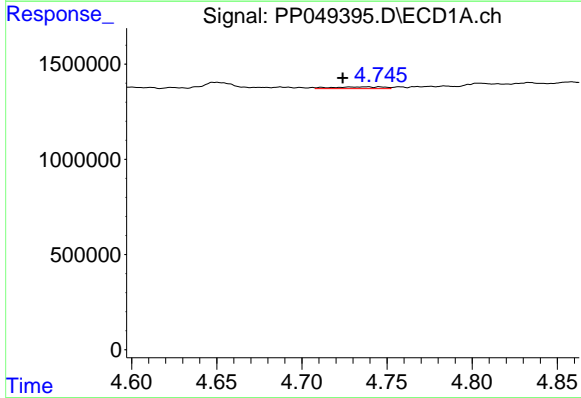
R.T.: 4.738 min
 Delta R.T.: 0.014 min
 Response: 203828
 Conc: 5.15 ng/ml

Instrument :
 ECD_P
 ClientSampleId :



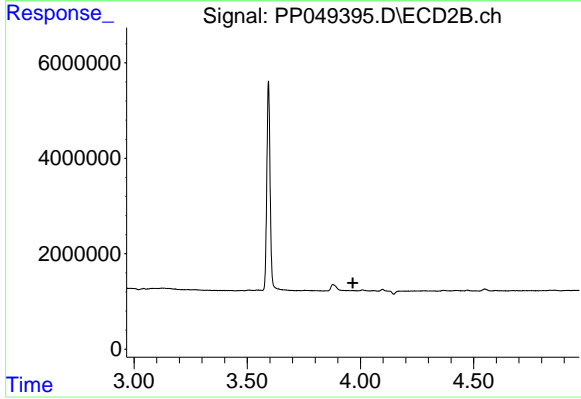
#10 AR-1221-3

R.T.: 0.000 min
 Exp R.T. : 3.966 min
 Response: 0
 Conc: N.D.



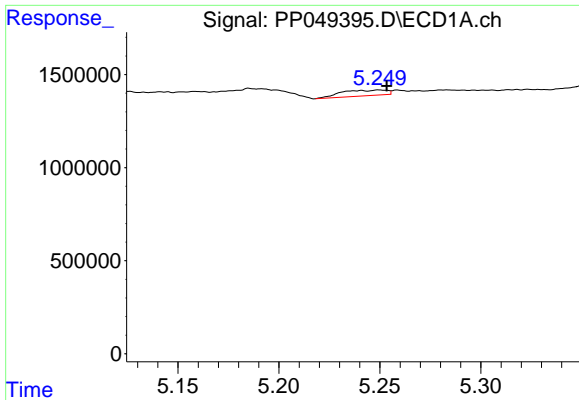
#11 AR-1232-1

R.T.: 4.738 min
 Delta R.T.: 0.014 min
 Response: 203828
 Conc: 5.36 ng/ml



#11 AR-1232-1

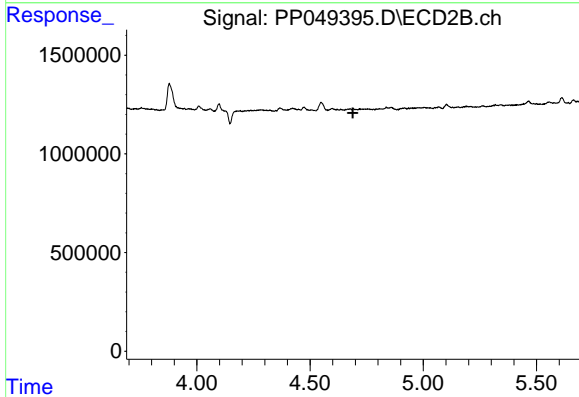
R.T.: 0.000 min
 Exp R.T. : 3.967 min
 Response: 0
 Conc: N.D.



#12 AR-1232-2

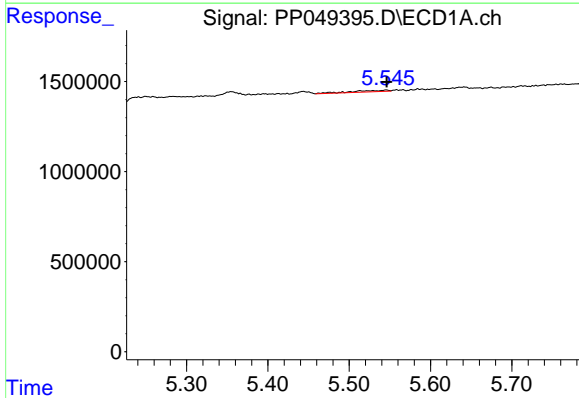
R.T.: 5.250 min
 Delta R.T.: -0.003 min
 Response: 479324
 Conc: 25.36 ng/ml

Instrument :
 ECD_P
 ClientSampleId :



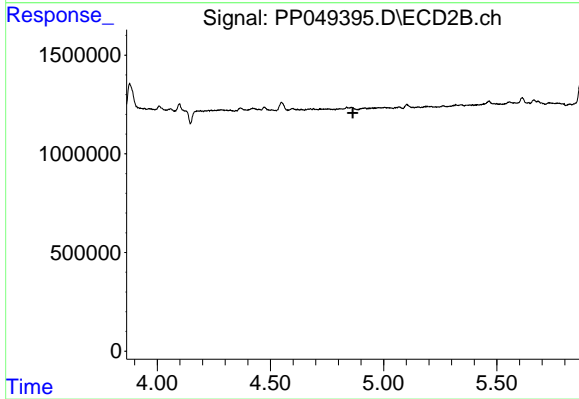
#12 AR-1232-2

R.T.: 0.000 min
 Exp R.T. : 4.689 min
 Response: 0
 Conc: N.D.



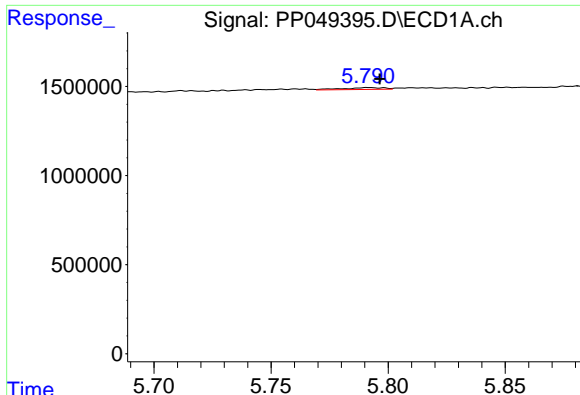
#13 AR-1232-3

R.T.: 5.545 min
 Delta R.T.: 0.000 min
 Response: 243850
 Conc: 6.60 ng/ml



#13 AR-1232-3

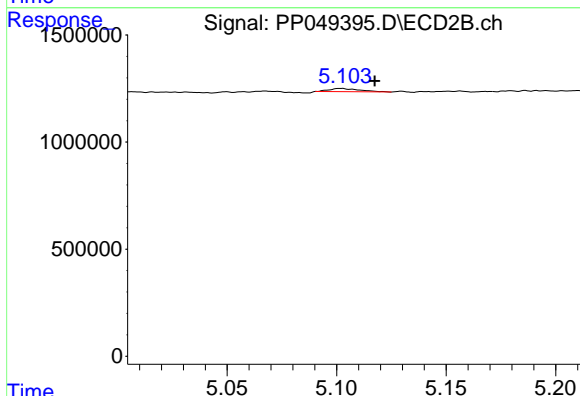
R.T.: 0.000 min
 Exp R.T. : 4.864 min
 Response: 0
 Conc: N.D.



#15 AR-1232-5

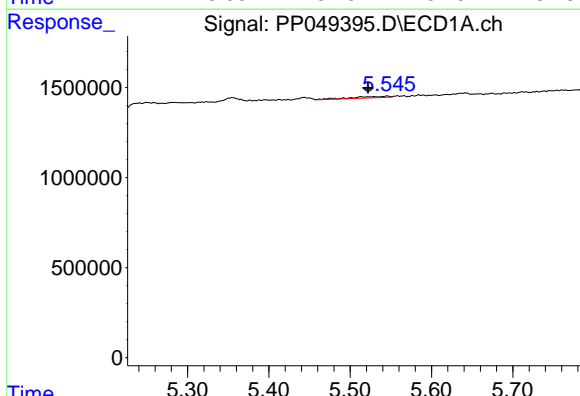
R.T.: 5.792 min
 Delta R.T.: -0.005 min
 Response: 127788
 Conc: 8.19 ng/ml

Instrument :
 ECD_P
 ClientSampleId :



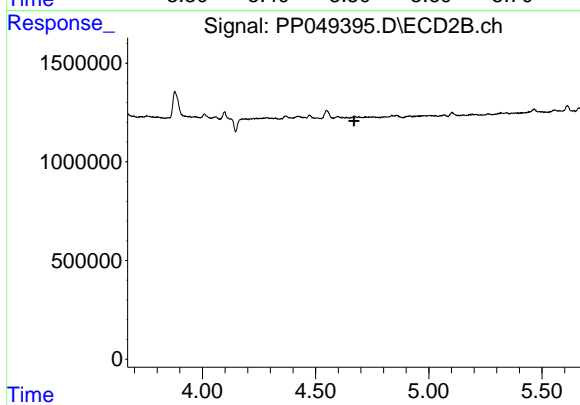
#15 AR-1232-5

R.T.: 5.102 min
 Delta R.T.: -0.015 min
 Response: 148124
 Conc: 4.14 ng/ml



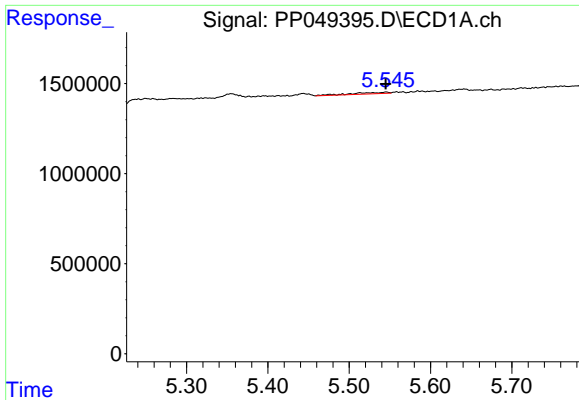
#16 AR-1242-1

R.T.: 5.545 min
 Delta R.T.: 0.023 min
 Response: 243850
 Conc: 6.02 ng/ml



#16 AR-1242-1

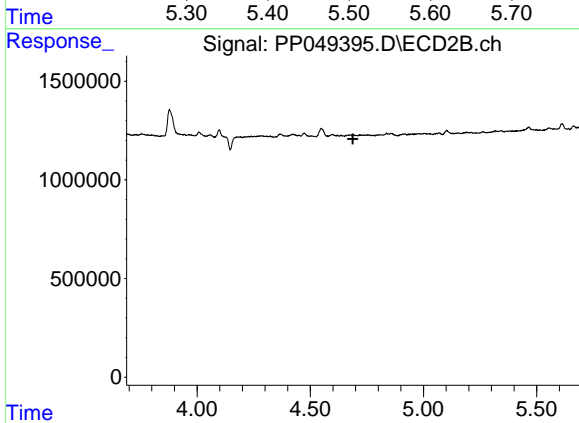
R.T.: 0.000 min
 Exp R.T. : 4.670 min
 Response: 0
 Conc: N.D.



#17 AR-1242-2

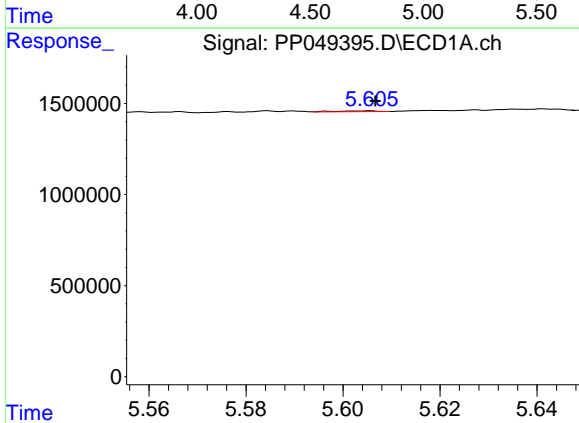
R.T.: 5.545 min
 Delta R.T.: 0.000 min
 Response: 243850
 Conc: 4.23 ng/ml

Instrument :
 ECD_P
 ClientSampleId :



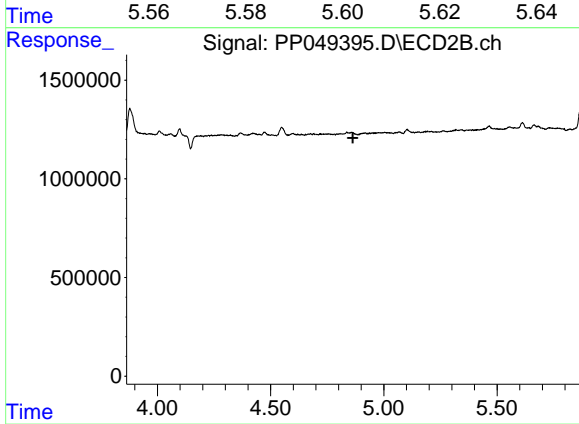
#17 AR-1242-2

R.T.: 0.000 min
 Exp R.T. : 4.689 min
 Response: 0
 Conc: N.D.



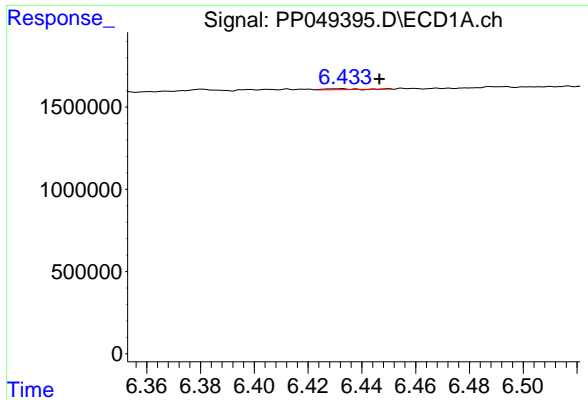
#18 AR-1242-3

R.T.: 5.605 min
 Delta R.T.: -0.002 min
 Response: 24967
 Conc: 0.69 ng/ml



#18 AR-1242-3

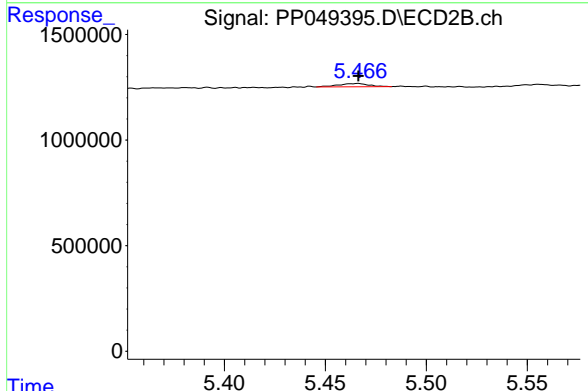
R.T.: 0.000 min
 Exp R.T. : 4.863 min
 Response: 0
 Conc: N.D.



#20 AR-1242-5

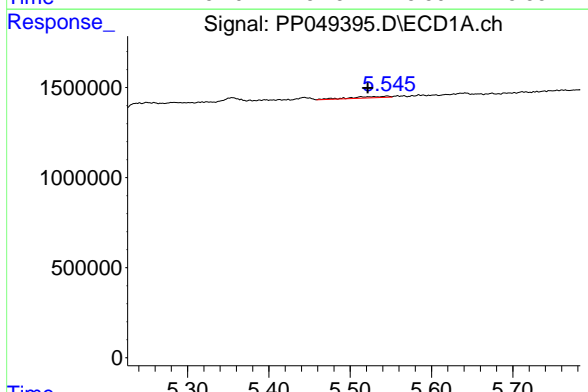
R.T.: 6.432 min
 Delta R.T.: -0.014 min
 Response: 37026
 Conc: 1.11 ng/ml

Instrument :
 ECD_P
 ClientSampleId :



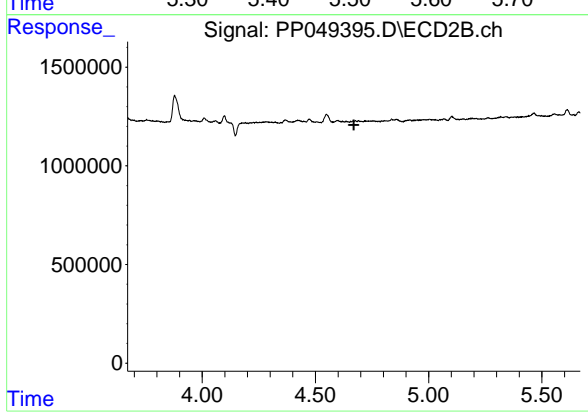
#20 AR-1242-5

R.T.: 5.466 min
 Delta R.T.: 0.000 min
 Response: 163853
 Conc: 2.35 ng/ml



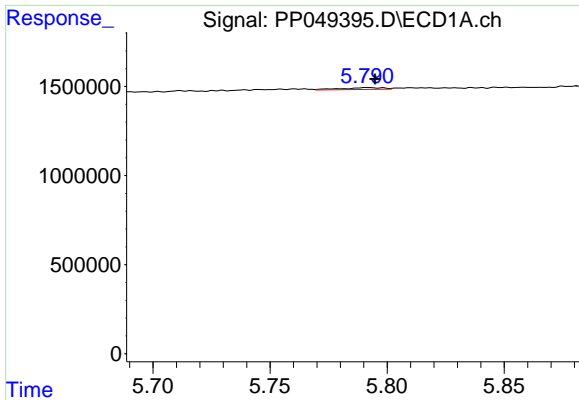
#21 AR-1248-1

R.T.: 5.545 min
 Delta R.T.: 0.024 min
 Response: 243850
 Conc: 7.58 ng/ml



#21 AR-1248-1

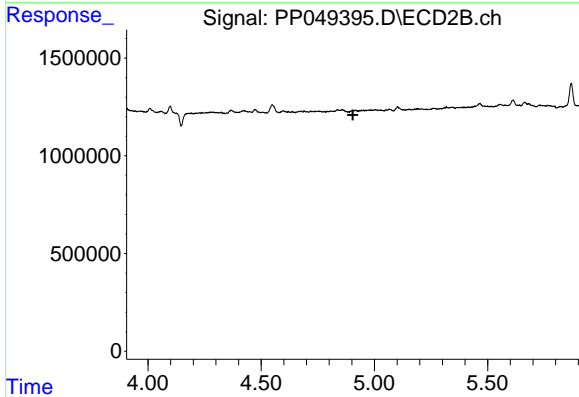
R.T.: 0.000 min
 Exp R.T.: 4.670 min
 Response: 0
 Conc: N.D.



#22 AR-1248-2

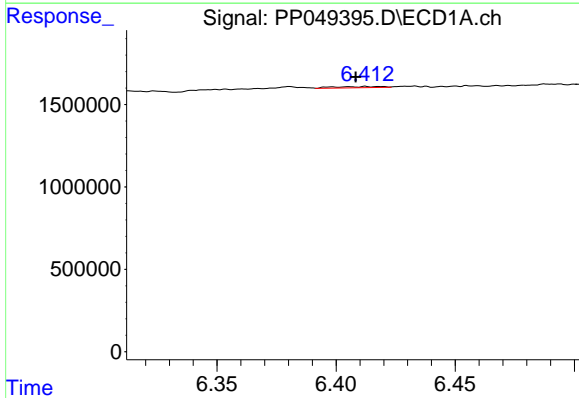
R.T.: 5.792 min
 Delta R.T.: -0.003 min
 Response: 127788
 Conc: 2.75 ng/ml

Instrument :
 ECD_P
 ClientSampleId :



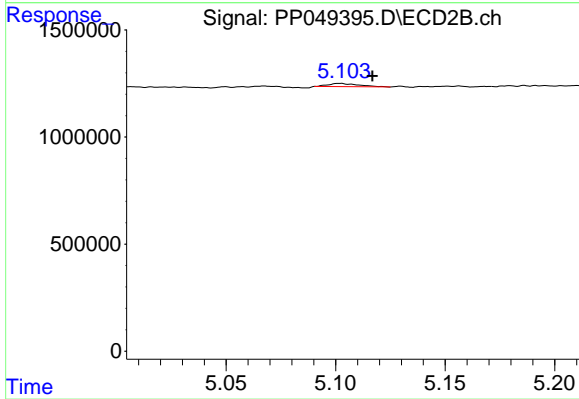
#22 AR-1248-2

R.T.: 0.000 min
 Exp R.T. : 4.905 min
 Response: 0
 Conc: N.D.



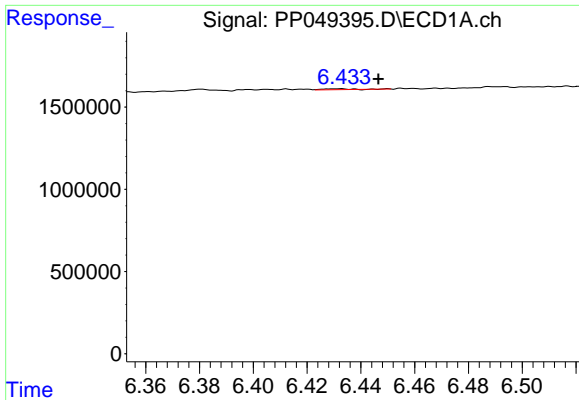
#24 AR-1248-4

R.T.: 6.413 min
 Delta R.T.: 0.004 min
 Response: 102240
 Conc: 1.65 ng/ml



#24 AR-1248-4

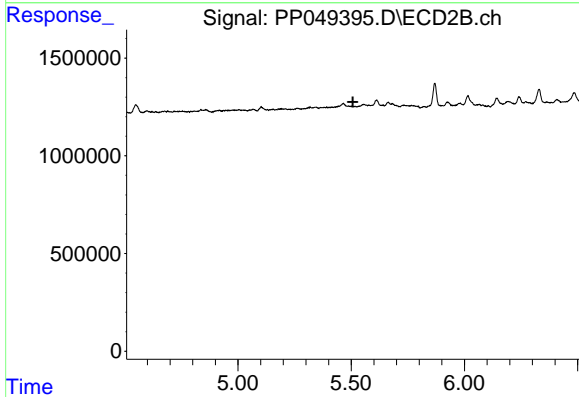
R.T.: 5.102 min
 Delta R.T.: -0.014 min
 Response: 148124
 Conc: 1.50 ng/ml



#25 AR-1248-5

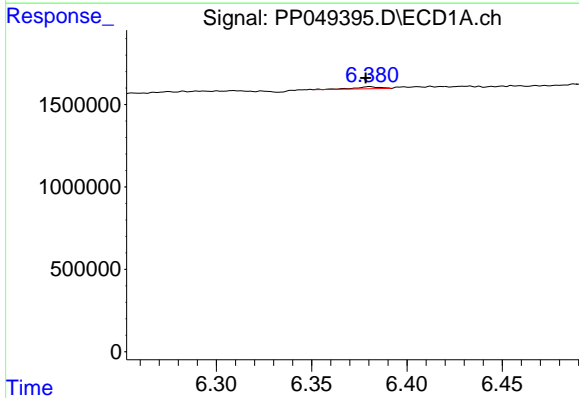
R.T.: 6.432 min
 Delta R.T.: -0.014 min
 Response: 37026
 Conc: 0.64 ng/ml

Instrument :
 ECD_P
 ClientSampleId :



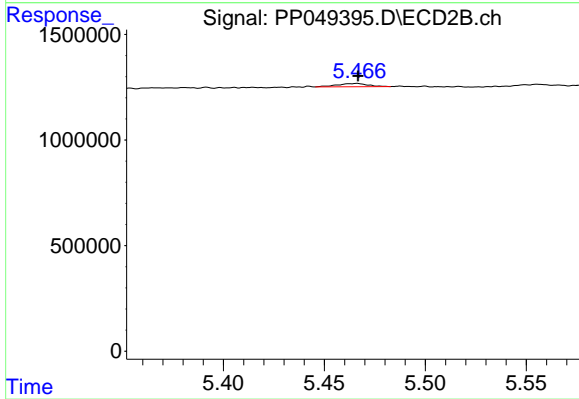
#25 AR-1248-5

R.T.: 0.000 min
 Exp R.T. : 5.508 min
 Response: 0
 Conc: N.D.



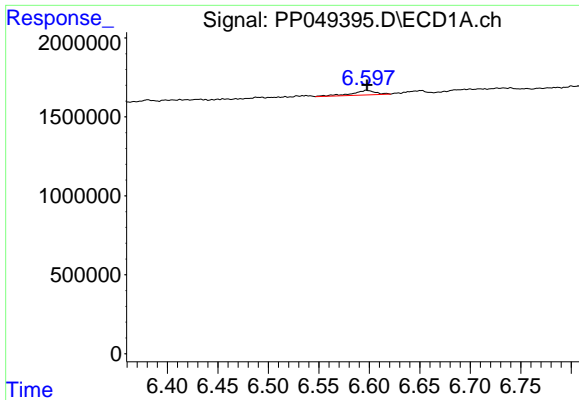
#26 AR-1254-1

R.T.: 6.380 min
 Delta R.T.: 0.002 min
 Response: 110229
 Conc: 1.64 ng/ml



#26 AR-1254-1

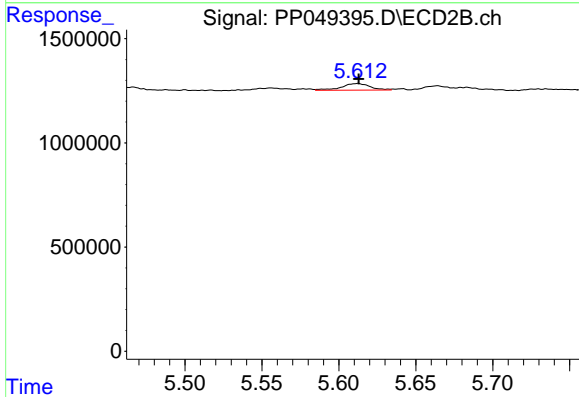
R.T.: 5.466 min
 Delta R.T.: 0.000 min
 Response: 163853
 Conc: 1.12 ng/ml



#27 AR-1254-2

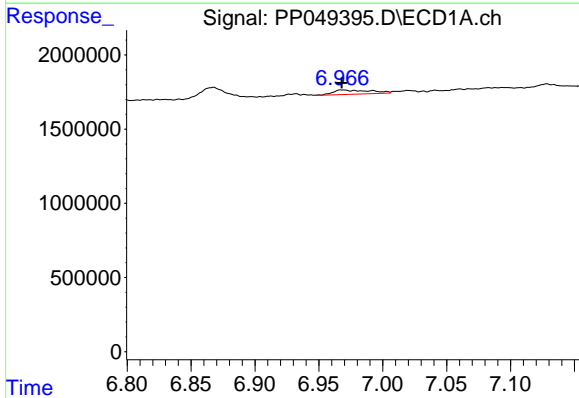
R.T.: 6.597 min
 Delta R.T.: 0.000 min
 Response: 478020
 Conc: 5.10 ng/ml

Instrument :
 ECD_P
 ClientSampleId :



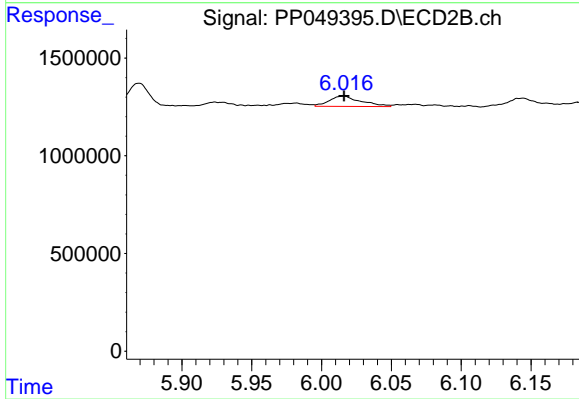
#27 AR-1254-2

R.T.: 5.613 min
 Delta R.T.: 0.000 min
 Response: 406372
 Conc: 3.26 ng/ml



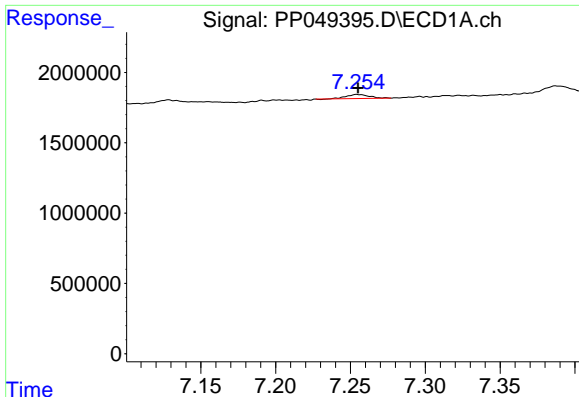
#28 AR-1254-3

R.T.: 6.968 min
 Delta R.T.: 0.000 min
 Response: 603775
 Conc: 5.95 ng/ml



#28 AR-1254-3

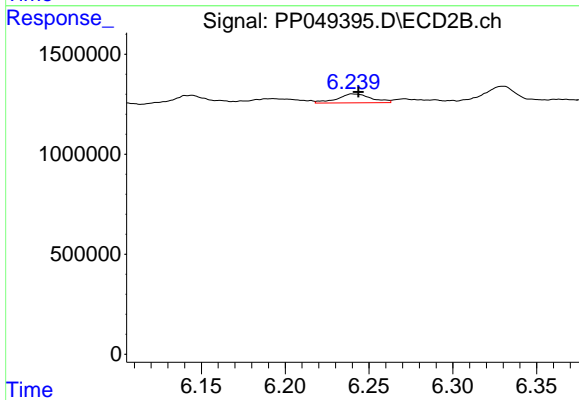
R.T.: 6.016 min
 Delta R.T.: 0.000 min
 Response: 852208
 Conc: 4.73 ng/ml



#29 AR-1254-4

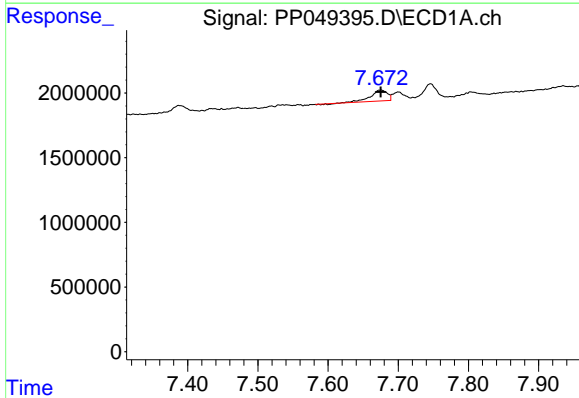
R.T.: 7.255 min
 Delta R.T.: 0.000 min
 Response: 298639
 Conc: 3.98 ng/ml

Instrument :
 ECD_P
 ClientSampleId :



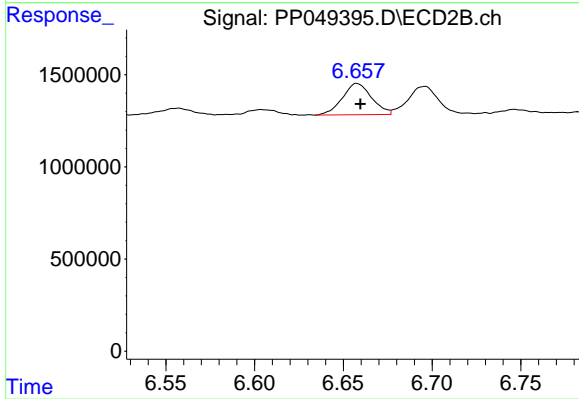
#29 AR-1254-4

R.T.: 6.240 min
 Delta R.T.: -0.004 min
 Response: 632120
 Conc: 5.84 ng/ml



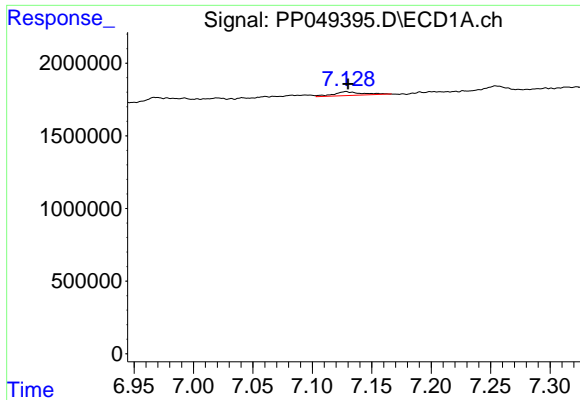
#30 AR-1254-5

R.T.: 7.675 min
 Delta R.T.: 0.000 min
 Response: 1358470
 Conc: 16.10 ng/ml



#30 AR-1254-5

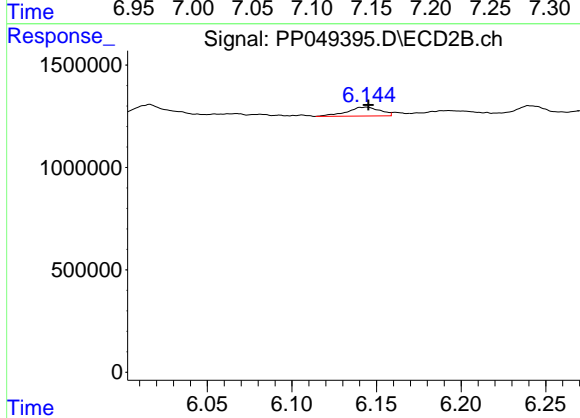
R.T.: 6.657 min
 Delta R.T.: -0.002 min
 Response: 1957743
 Conc: 13.49 ng/ml



#31 AR-1260-1

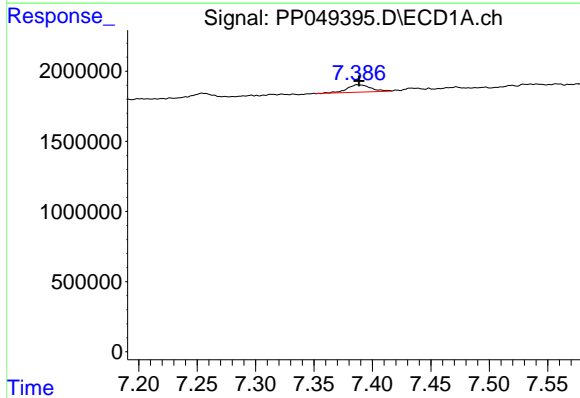
R.T.: 7.128 min
 Delta R.T.: -0.002 min
 Response: 520418
 Conc: 7.15 ng/ml

Instrument :
 ECD_P
 ClientSampleId :



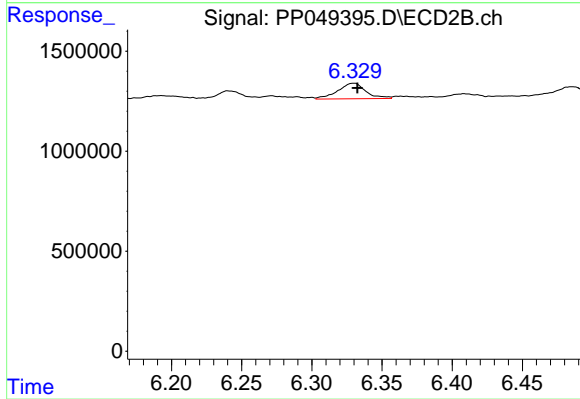
#31 AR-1260-1

R.T.: 6.144 min
 Delta R.T.: 0.000 min
 Response: 593798
 Conc: 5.15 ng/ml



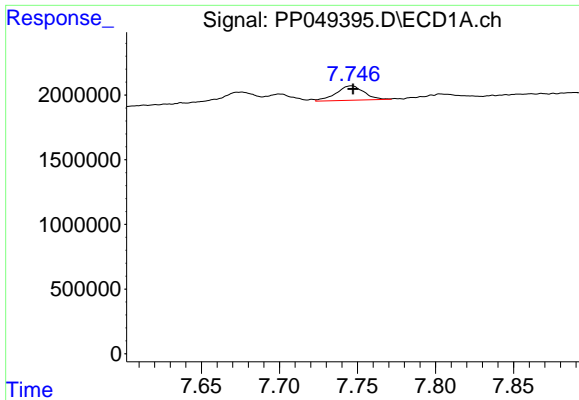
#32 AR-1260-2

R.T.: 7.388 min
 Delta R.T.: 0.000 min
 Response: 757909
 Conc: 9.01 ng/ml



#32 AR-1260-2

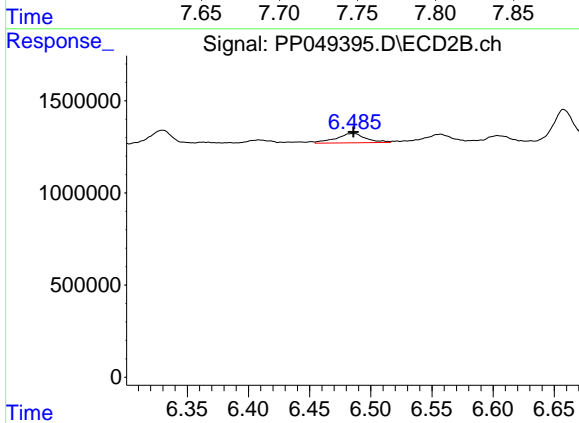
R.T.: 6.330 min
 Delta R.T.: -0.002 min
 Response: 1074694
 Conc: 8.01 ng/ml



#33 AR-1260-3

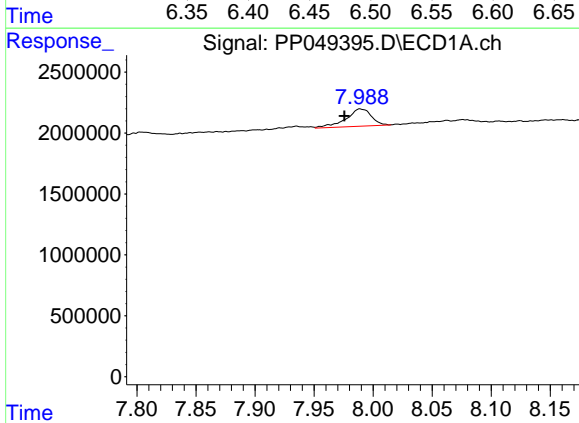
R.T.: 7.746 min
 Delta R.T.: -0.001 min
 Response: 1379351
 Conc: 24.66 ng/ml

Instrument :
 ECD_P
 ClientSampleId :



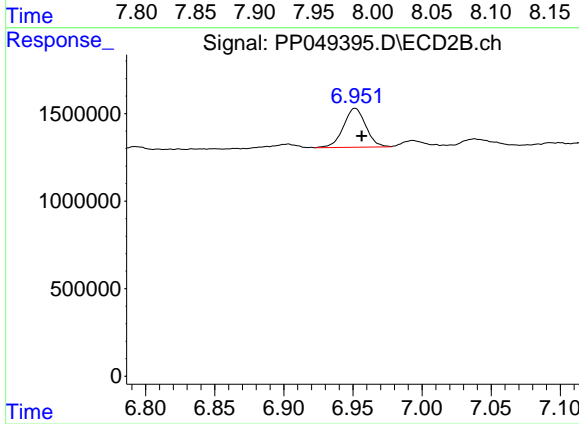
#33 AR-1260-3

R.T.: 6.486 min
 Delta R.T.: 0.000 min
 Response: 863465
 Conc: 7.09 ng/ml



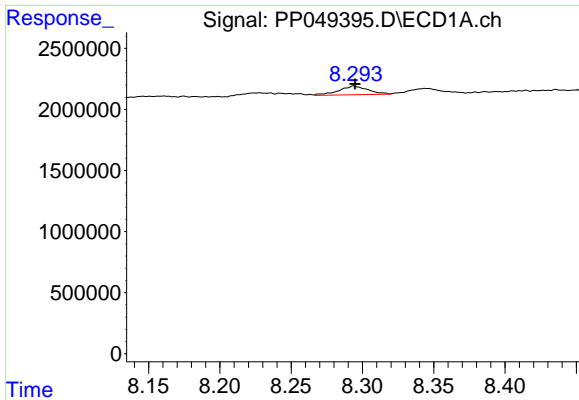
#34 AR-1260-4

R.T.: 7.989 min
 Delta R.T.: 0.014 min
 Response: 2110551
 Conc: 30.18 ng/ml



#34 AR-1260-4

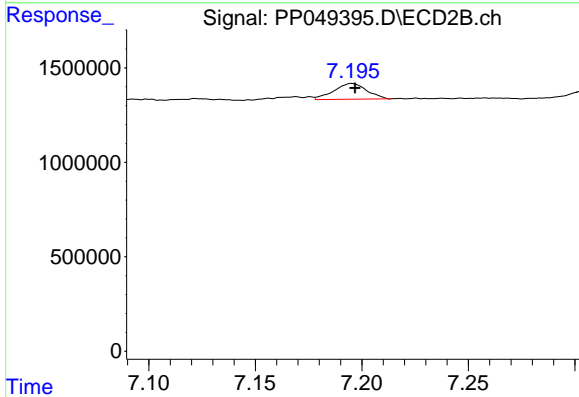
R.T.: 6.952 min
 Delta R.T.: -0.005 min
 Response: 2512523
 Conc: 29.78 ng/ml



#35 AR-1260-5

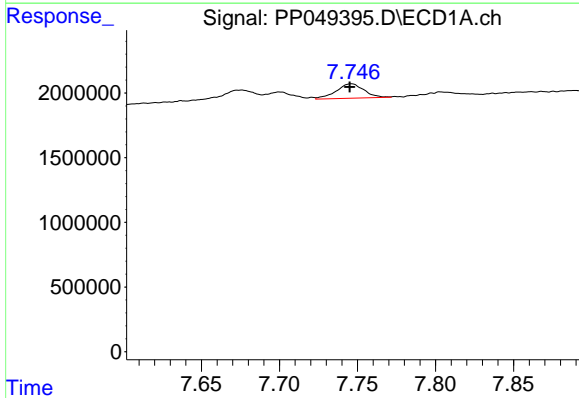
R.T.: 8.294 min
 Delta R.T.: 0.000 min
 Response: 1022646
 Conc: 7.46 ng/ml

Instrument :
 ECD_P
 ClientSampleId :



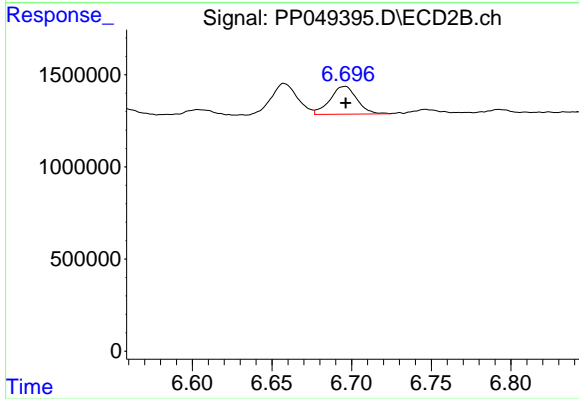
#35 AR-1260-5

R.T.: 7.195 min
 Delta R.T.: -0.001 min
 Response: 899390
 Conc: 4.77 ng/ml



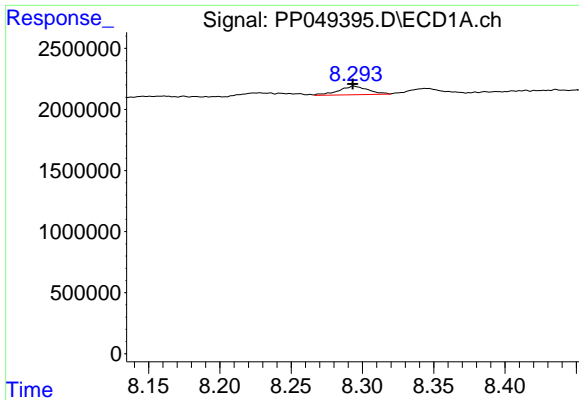
#36 AR-1262-1

R.T.: 7.746 min
 Delta R.T.: 0.001 min
 Response: 1379351
 Conc: 14.72 ng/ml



#36 AR-1262-1

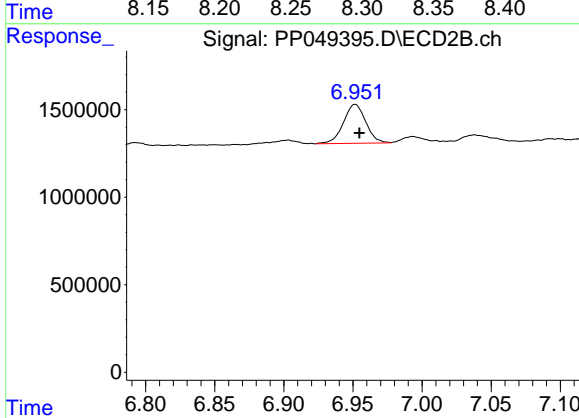
R.T.: 6.696 min
 Delta R.T.: 0.000 min
 Response: 1780726
 Conc: 13.39 ng/ml



#37 AR-1262-2

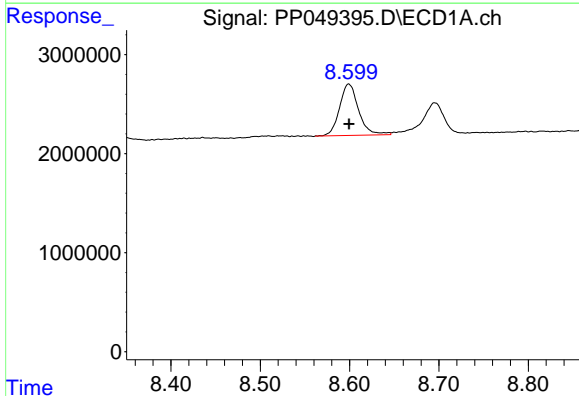
R.T.: 8.294 min
Delta R.T.: 0.000 min
Response: 1022646
Conc: 5.98 ng/ml

Instrument :
ECD_P
ClientSampleId :



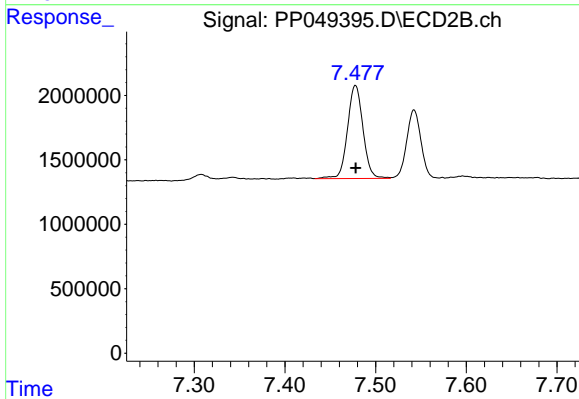
#37 AR-1262-2

R.T.: 6.952 min
Delta R.T.: -0.003 min
Response: 2512523
Conc: 22.17 ng/ml



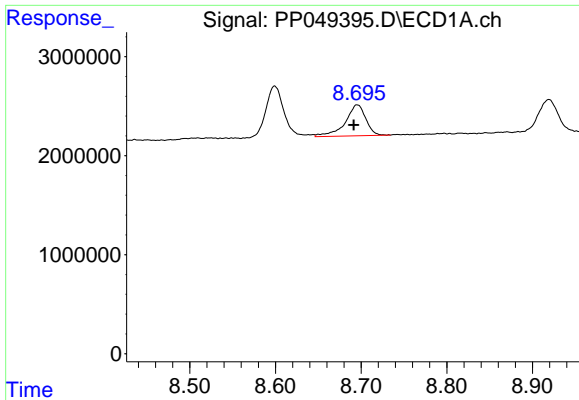
#38 AR-1262-3

R.T.: 8.599 min
Delta R.T.: 0.000 min
Response: 7684190
Conc: 102.69 ng/ml



#38 AR-1262-3

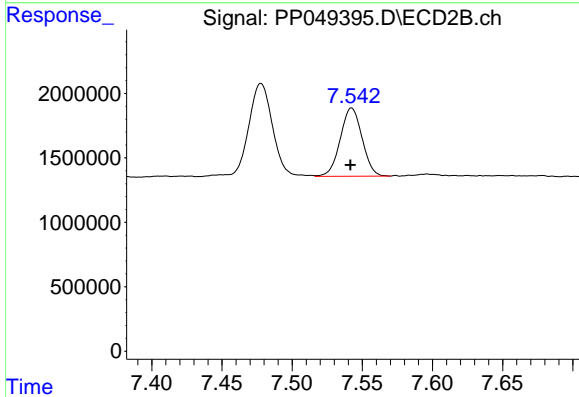
R.T.: 7.478 min
Delta R.T.: 0.000 min
Response: 8551272
Conc: 104.95 ng/ml



#39 AR-1262-4

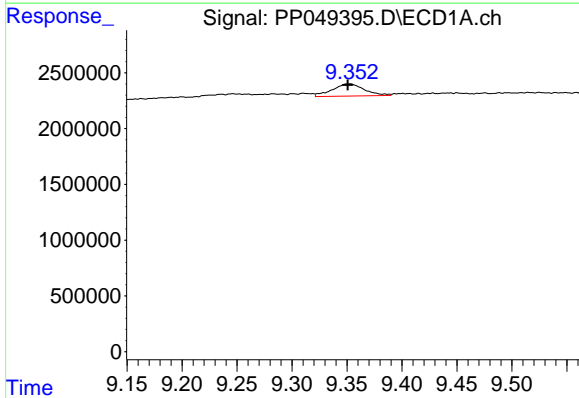
R.T.: 8.696 min
 Delta R.T.: 0.004 min
 Response: 5220064
 Conc: 111.22 ng/ml

Instrument :
 ECD_P
 ClientSampleId :



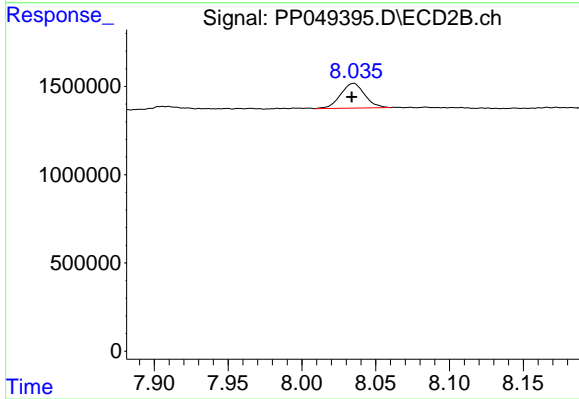
#39 AR-1262-4

R.T.: 7.542 min
 Delta R.T.: 0.000 min
 Response: 5742478
 Conc: 39.39 ng/ml



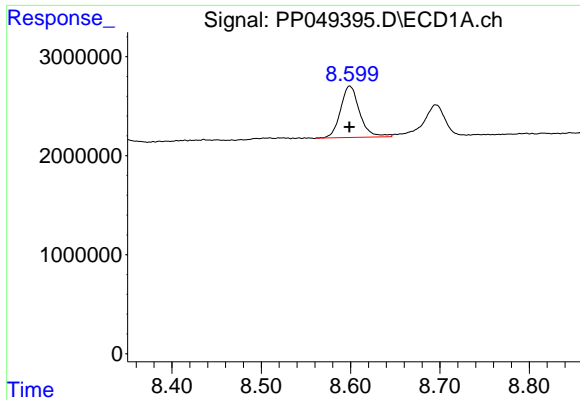
#40 AR-1262-5

R.T.: 9.352 min
 Delta R.T.: 0.001 min
 Response: 2224259
 Conc: 36.79 ng/ml



#40 AR-1262-5

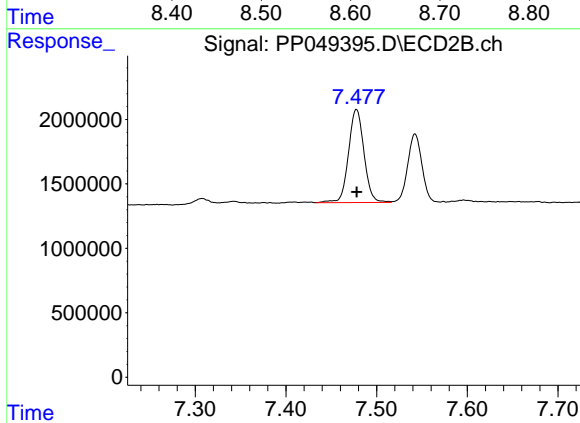
R.T.: 8.035 min
 Delta R.T.: 0.001 min
 Response: 1588628
 Conc: 26.34 ng/ml



#41 AR-1268-1

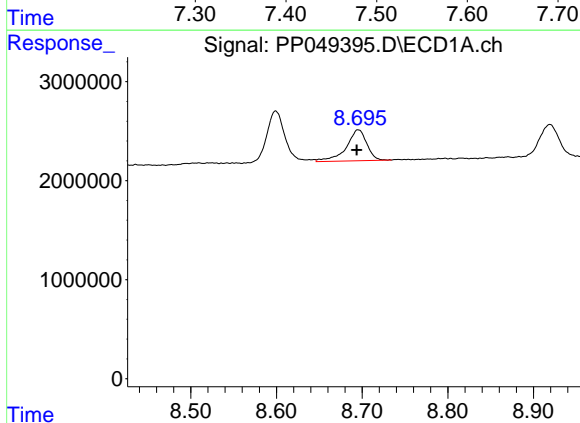
R.T.: 8.599 min
 Delta R.T.: 0.000 min
 Response: 7684190
 Conc: 40.92 ng/ml

Instrument :
 ECD_P
 ClientSampleId :



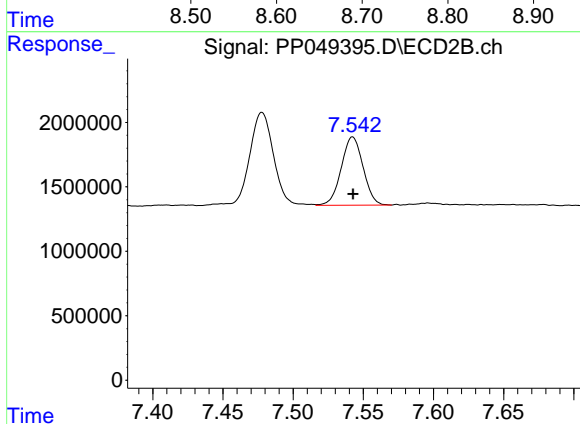
#41 AR-1268-1

R.T.: 7.478 min
 Delta R.T.: 0.000 min
 Response: 8551272
 Conc: 39.75 ng/ml



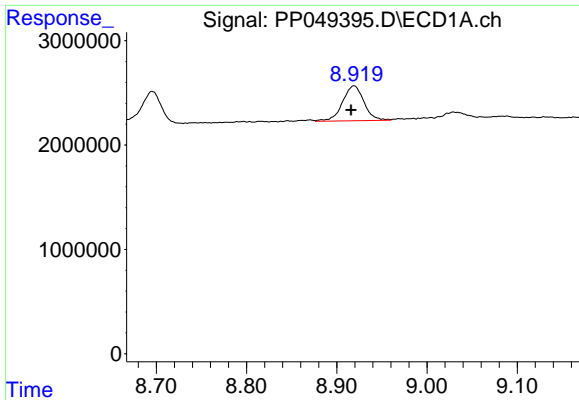
#42 AR-1268-2

R.T.: 8.696 min
 Delta R.T.: 0.002 min
 Response: 5220064
 Conc: 29.84 ng/ml



#42 AR-1268-2

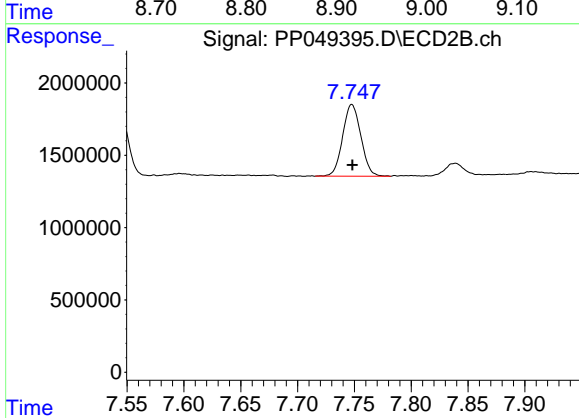
R.T.: 7.542 min
 Delta R.T.: 0.000 min
 Response: 5742478
 Conc: 30.02 ng/ml



#43 AR-1268-3

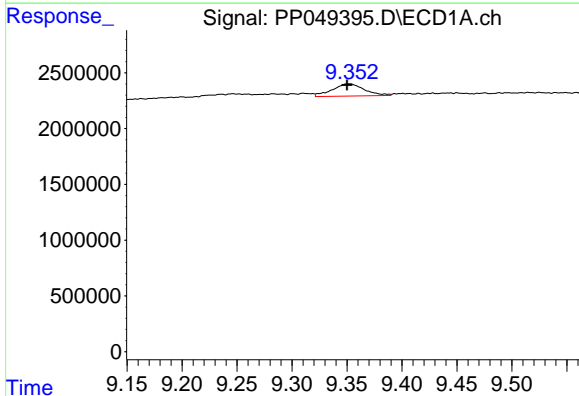
R.T.: 8.919 min
 Delta R.T.: 0.003 min
 Response: 5554412
 Conc: 38.77 ng/ml

Instrument :
 ECD_P
 ClientSampleId :



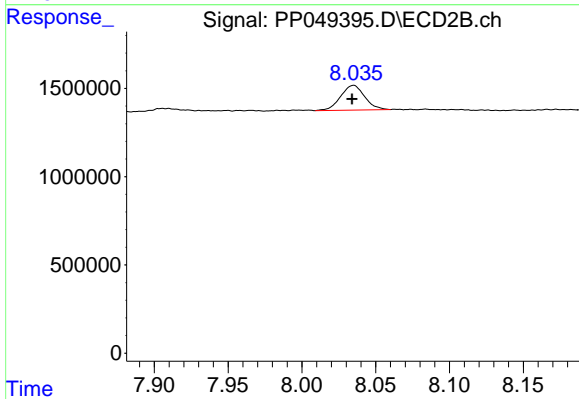
#43 AR-1268-3

R.T.: 7.748 min
 Delta R.T.: 0.000 min
 Response: 5546980
 Conc: 36.42 ng/ml



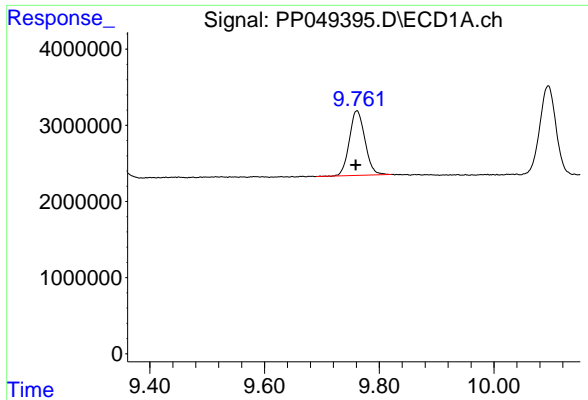
#44 AR-1268-4

R.T.: 9.352 min
 Delta R.T.: 0.002 min
 Response: 2224259
 Conc: 34.72 ng/ml



#44 AR-1268-4

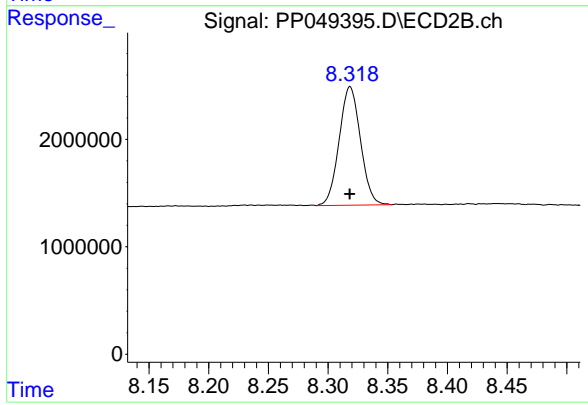
R.T.: 8.035 min
 Delta R.T.: 0.001 min
 Response: 1588628
 Conc: 24.93 ng/ml



#45 AR-1268-5

R.T.: 9.761 min
Delta R.T.: 0.002 min
Response: 15947892
Conc: 34.58 ng/ml

Instrument :
ECD_P
ClientSampleId :



#45 AR-1268-5

R.T.: 8.318 min
Delta R.T.: 0.000 min
Response: 13699609
Conc: 34.33 ng/ml