

Data Path : Z:\pestpcbsrv\HPCHEM1\ECD_P\Data\PP071421\
 Data File : PP037278.D
 Signal(s) : Signal #1: ECD1A.CH Signal #2: ECD2B.CH
 Acq On : 14 Jul 2021 15:55
 Operator : DD\AJ
 Sample : AR1242CCC500
 Misc :
 ALS Vial : 4 Sample Multiplier: 1

Instrument :
 ECD_P
 ClientSampleId :
 AR1242CCC500

Integration File signal 1: autoint1.e
 Integration File signal 2: autoint2.e
 Quant Time: Jul 14 18:08:14 2021
 Quant Method : Z:\pestpcbsrv\HPCHEM1\ECD_P\methods\PP070621.M
 Quant Title : GC EXTRACTABLES
 QLast Update : Wed Jul 07 08:32:32 2021
 Response via : Initial Calibration
 Integrator: ChemStation 6890 Scale Mode: Small noise peaks clipped

Volume Inj. : 2 µl
 Signal #1 Phase : ZB-MR1 Signal #2 Phase: ZB-MR2
 Signal #1 Info : 30Mx0.32mmx 0.50µ Signal #2 Info : 30M x 0.32mm x 0.25µm

Compound	RT#1	RT#2	Resp#1	Resp#2	ng/ml	ng/ml

System Monitoring Compounds						
1) SA Tetrachlo...	4.956	3.947	2652733	1560223	58.367	57.017
2) SA Decachlor...	10.984	9.239	2191181	1212715	47.598	43.568
Target Compounds						
16) L4 AR-1242-1	6.276	5.198	648548	419262	508.789	556.273
17) L4 AR-1242-2	6.300	5.218	914172	583385	504.199	566.959
18) L4 AR-1242-3	6.366	5.408	574502	319655	499.495	561.372
19) L4 AR-1242-4	6.474	5.506	472207	296966	493.268	576.211
20) L4 AR-1242-5	7.255	6.068	488716	378798	469.937	556.501

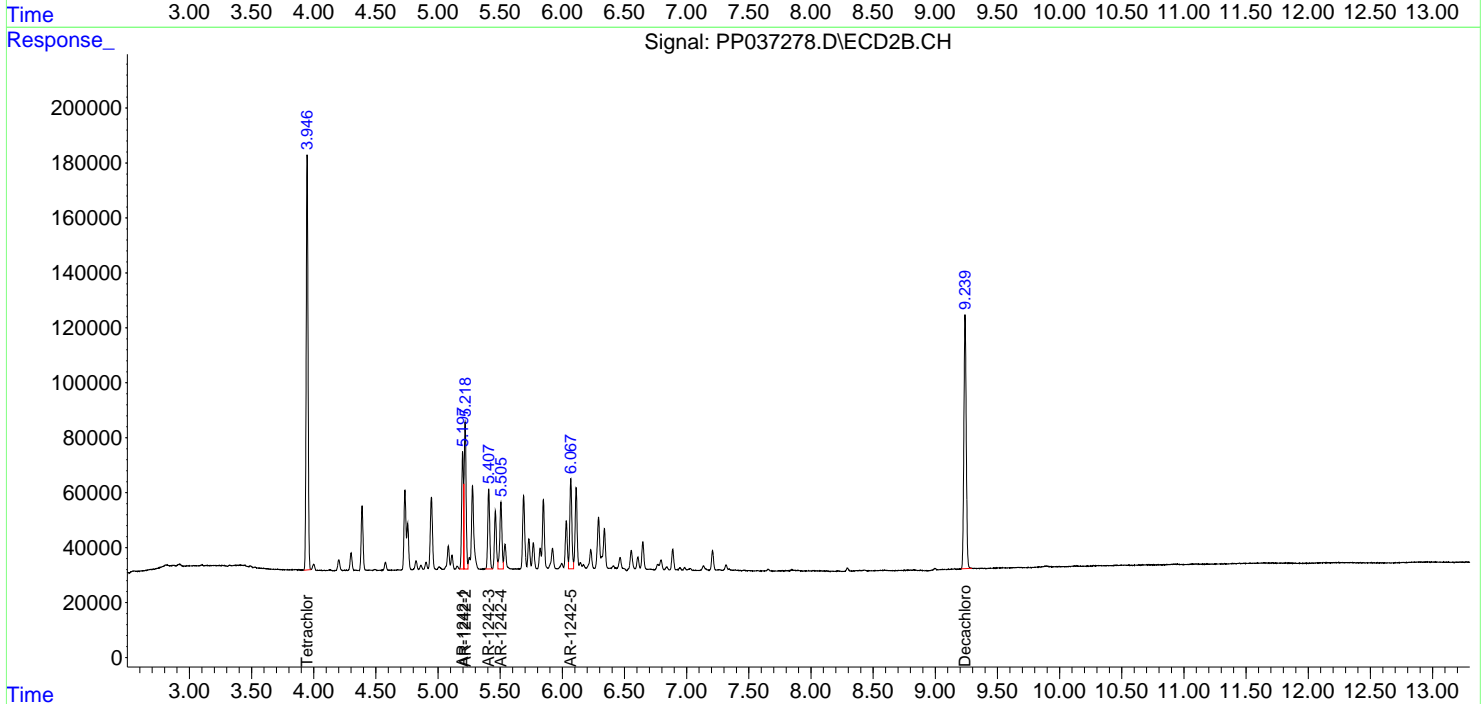
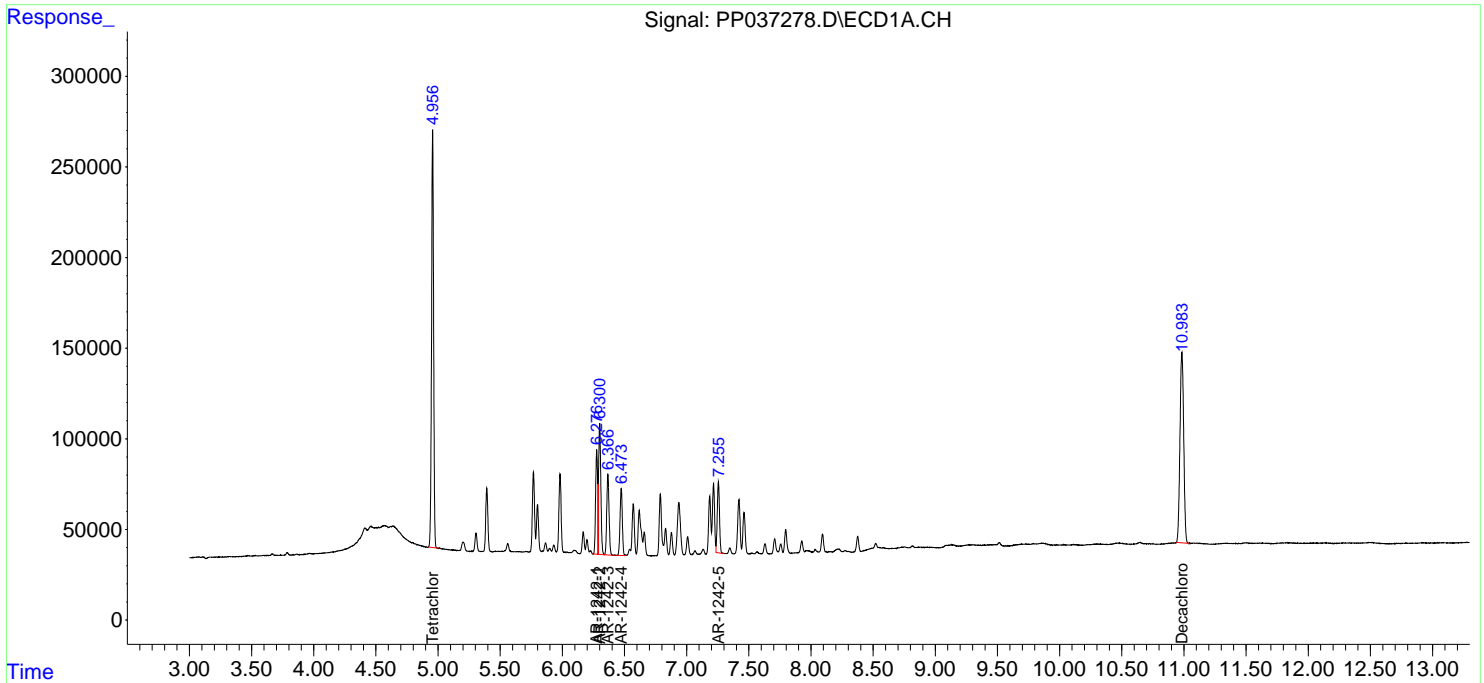
(f)=RT Delta > 1/2 Window (#)=Amounts differ by > 25% (m)=manual int.

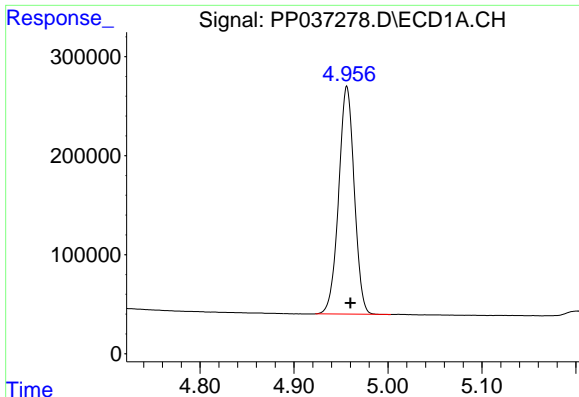
Data Path : Z:\pestpcbsrv\HPCHEM1\ECD_P\Data\PP071421\
 Data File : PP037278.D
 Signal(s) : Signal #1: ECD1A.CH Signal #2: ECD2B.CH
 Acq On : 14 Jul 2021 15:55
 Operator : DD\AJ
 Sample : AR1242CCC500
 Misc :
 ALS Vial : 4 Sample Multiplier: 1

Instrument :
 ECD_P
 ClientSampleId :
 AR1242CCC500

Integration File signal 1: autoint1.e
 Integration File signal 2: autoint2.e
 Quant Time: Jul 14 18:08:14 2021
 Quant Method : Z:\pestpcbsrv\HPCHEM1\ECD_P\methods\PP070621.M
 Quant Title : GC EXTRACTABLES
 QLast Update : Wed Jul 07 08:32:32 2021
 Response via : Initial Calibration
 Integrator: ChemStation 6890 Scale Mode: Small noise peaks clipped

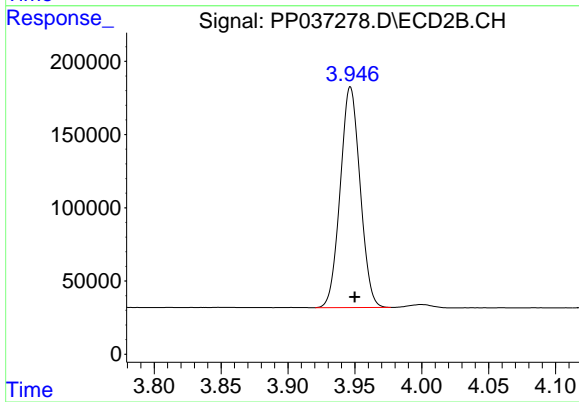
Volume Inj. : 2 µl
 Signal #1 Phase : ZB-MR1 Signal #2 Phase: ZB-MR2
 Signal #1 Info : 30Mx0.32mmx 0.50µ Signal #2 Info : 30M x 0.32mm x 0.25µm



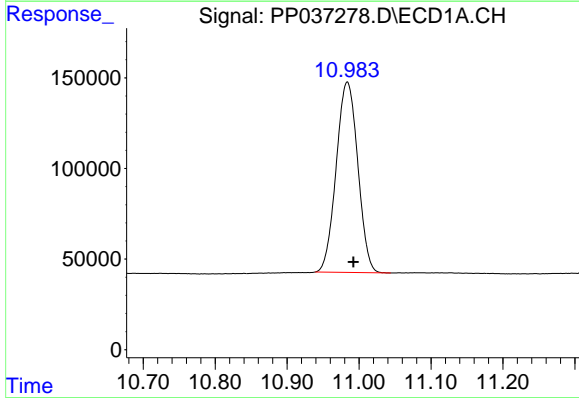


#1 Tetrachloro-m-xylene
 R.T.: 4.956 min
 Delta R.T.: -0.004 min
 Response: 2652733
 Conc: 58.37 ng/ml

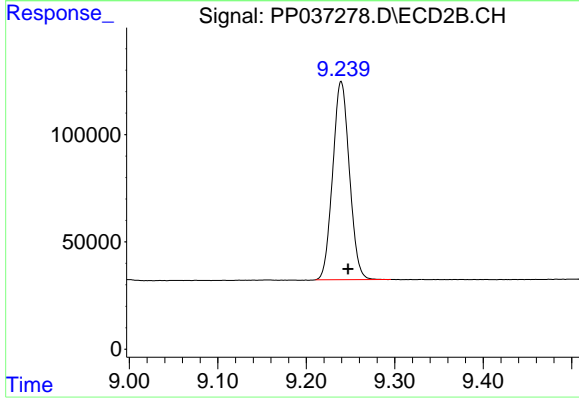
Instrument :
 ECD_P
 ClientSampleId :
 AR1242CCC500



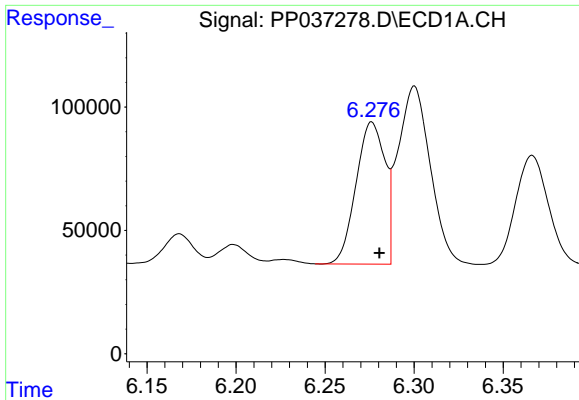
#1 Tetrachloro-m-xylene
 R.T.: 3.947 min
 Delta R.T.: -0.003 min
 Response: 1560223
 Conc: 57.02 ng/ml



#2 Decachlorobiphenyl
 R.T.: 10.984 min
 Delta R.T.: -0.009 min
 Response: 2191181
 Conc: 47.60 ng/ml



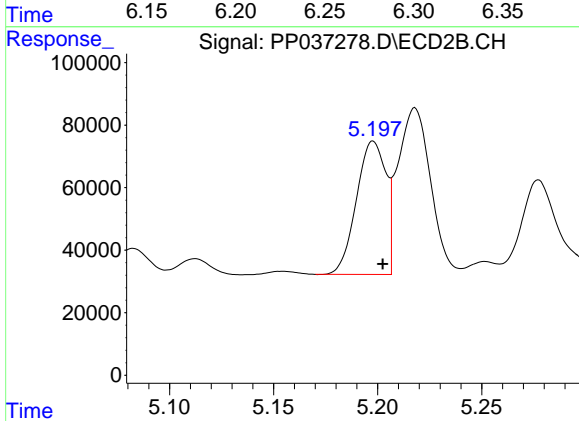
#2 Decachlorobiphenyl
 R.T.: 9.239 min
 Delta R.T.: -0.008 min
 Response: 1212715
 Conc: 43.57 ng/ml



#16 AR-1242-1

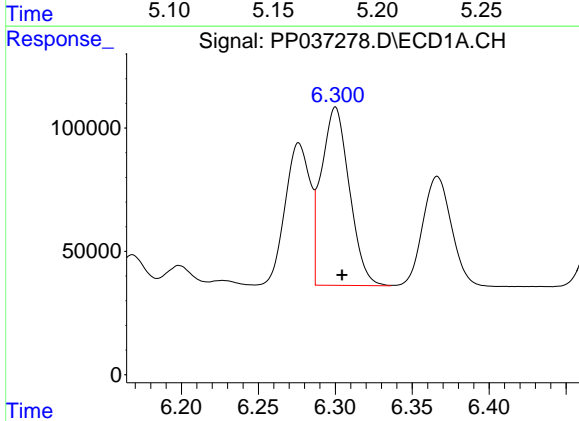
R.T.: 6.276 min
 Delta R.T.: -0.004 min
 Response: 648548
 Conc: 508.79 ng/ml

Instrument :
 ECD_P
ClientSampled :
 AR1242CCC500



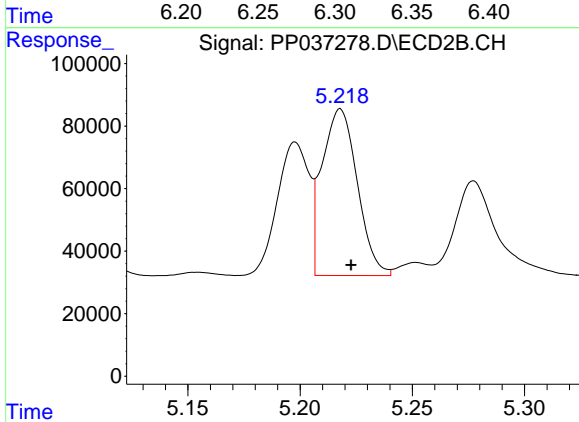
#16 AR-1242-1

R.T.: 5.198 min
 Delta R.T.: -0.005 min
 Response: 419262
 Conc: 556.27 ng/ml



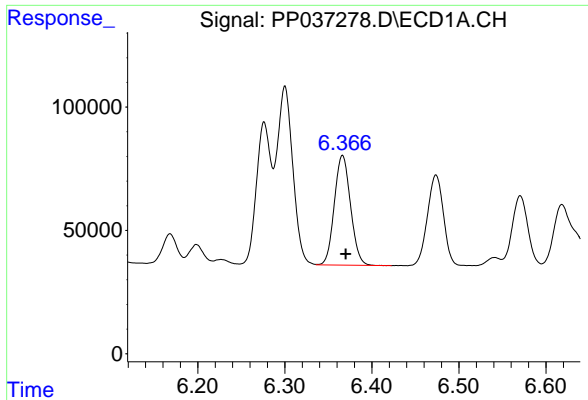
#17 AR-1242-2

R.T.: 6.300 min
 Delta R.T.: -0.004 min
 Response: 914172
 Conc: 504.20 ng/ml



#17 AR-1242-2

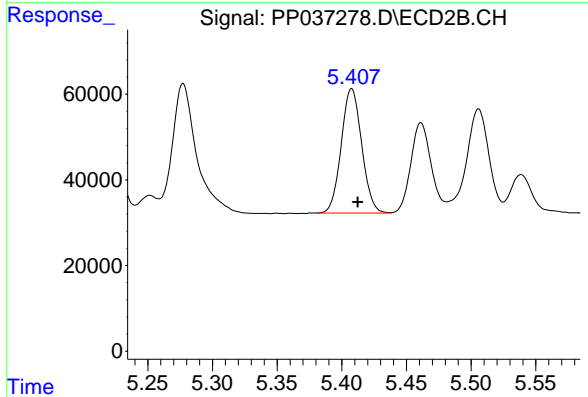
R.T.: 5.218 min
 Delta R.T.: -0.005 min
 Response: 583385
 Conc: 566.96 ng/ml



#18 AR-1242-3

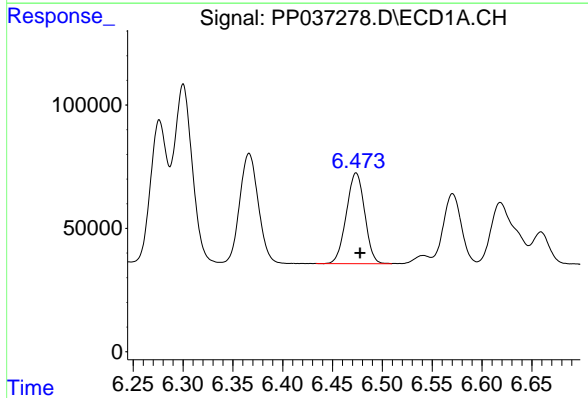
R.T.: 6.366 min
 Delta R.T.: -0.004 min
 Response: 574502
 Conc: 499.50 ng/ml

Instrument :
 ECD_P
 ClientSampleId :
 AR1242CCC500



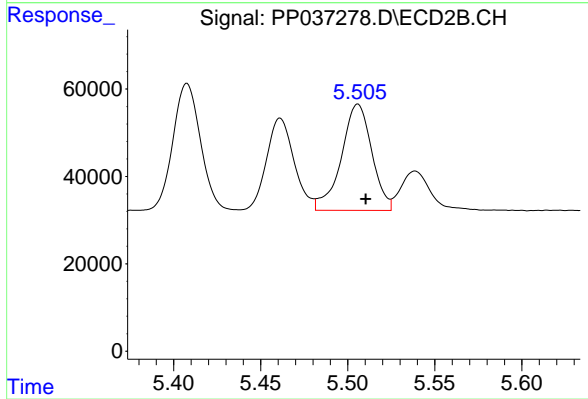
#18 AR-1242-3

R.T.: 5.408 min
 Delta R.T.: -0.005 min
 Response: 319655
 Conc: 561.37 ng/ml



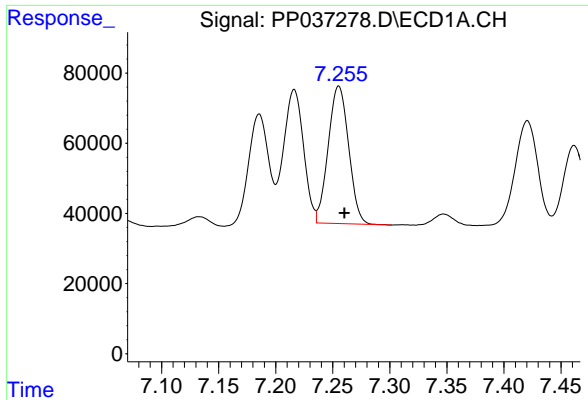
#19 AR-1242-4

R.T.: 6.474 min
 Delta R.T.: -0.004 min
 Response: 472207
 Conc: 493.27 ng/ml



#19 AR-1242-4

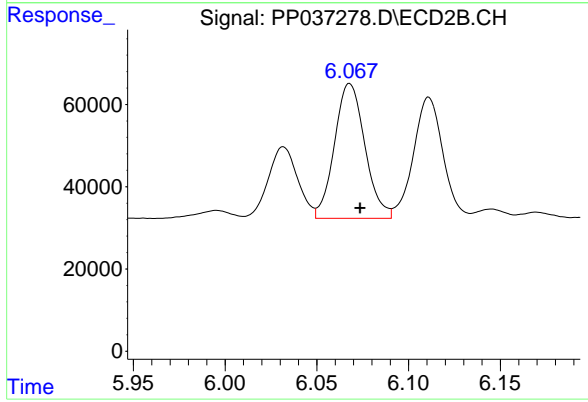
R.T.: 5.506 min
 Delta R.T.: -0.004 min
 Response: 296966
 Conc: 576.21 ng/ml



#20 AR-1242-5

R.T.: 7.255 min
Delta R.T.: -0.005 min
Response: 488716
Conc: 469.94 ng/ml

Instrument :
ECD_P
ClientSampleId :
AR1242CCC500



#20 AR-1242-5

R.T.: 6.068 min
Delta R.T.: -0.006 min
Response: 378798
Conc: 556.50 ng/ml