

Data Path : Z:\pestpcbsrv\HPCHEM1\ECD_P\Data\PP071524\
 Data File : PP066327.D
 Signal(s) : Signal #1: ECD1A.ch Signal #2: ECD2B.ch
 Acq On : 15 Jul 2024 19:40
 Operator : YP\AJ
 Sample : AR1242ICC250
 Misc :
 ALS Vial : 13 Sample Multiplier: 1

Instrument :
 ECD_P
 ClientSampleId :
 AR1242ICC250

Integration File signal 1: autoint1.e
 Integration File signal 2: autoint2.e
 Quant Time: Jul 16 06:46:27 2024
 Quant Method : Z:\pestpcbsrv\HPCHEM1\ECD_P\methods\PP071624.M
 Quant Title : GC EXTRACTABLES
 QLast Update : Tue Jul 16 06:42:15 2024
 Response via : Initial Calibration
 Integrator: ChemStation

Volume Inj. : 2 µl
 Signal #1 Phase : ZB-MR1 Signal #2 Phase: ZB-MR2
 Signal #1 Info : 30Mx0.32mmx 0.50µ Signal #2 Info : 30M x 0.32mm x 0.25µm

Compound	RT#1	RT#2	Resp#1	Resp#2	ng/ml	ng/ml

System Monitoring Compounds						
1) SA Tetrachlo...	4.795	4.050	45052822	49903417	24.557	25.287
2) SA Decachlor...	10.800	9.231	48799462	31413924	26.538	23.940
Target Compounds						
16) L4 AR-1242-1	5.975	0.000	16296260	0	266.043	N.D. #
17) L4 AR-1242-2	5.998	5.183f	23901675	34920116	257.329	468.754 #
18) L4 AR-1242-3	6.061	5.366f	14994681	10574156	258.501	264.797
19) L4 AR-1242-4	6.162	5.448f	12779668	10820341	265.376	270.489
20) L4 AR-1242-5	6.902	5.980f	15574313	12574361	289.562	268.529

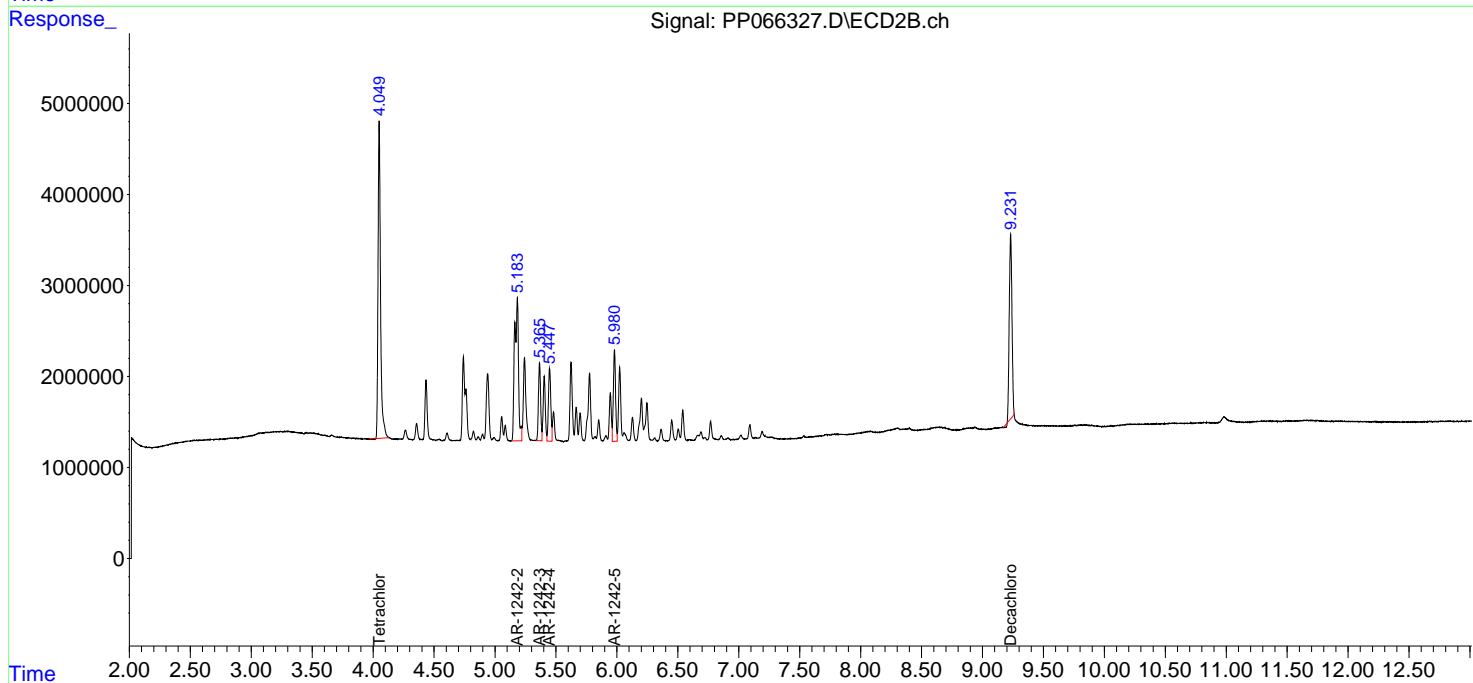
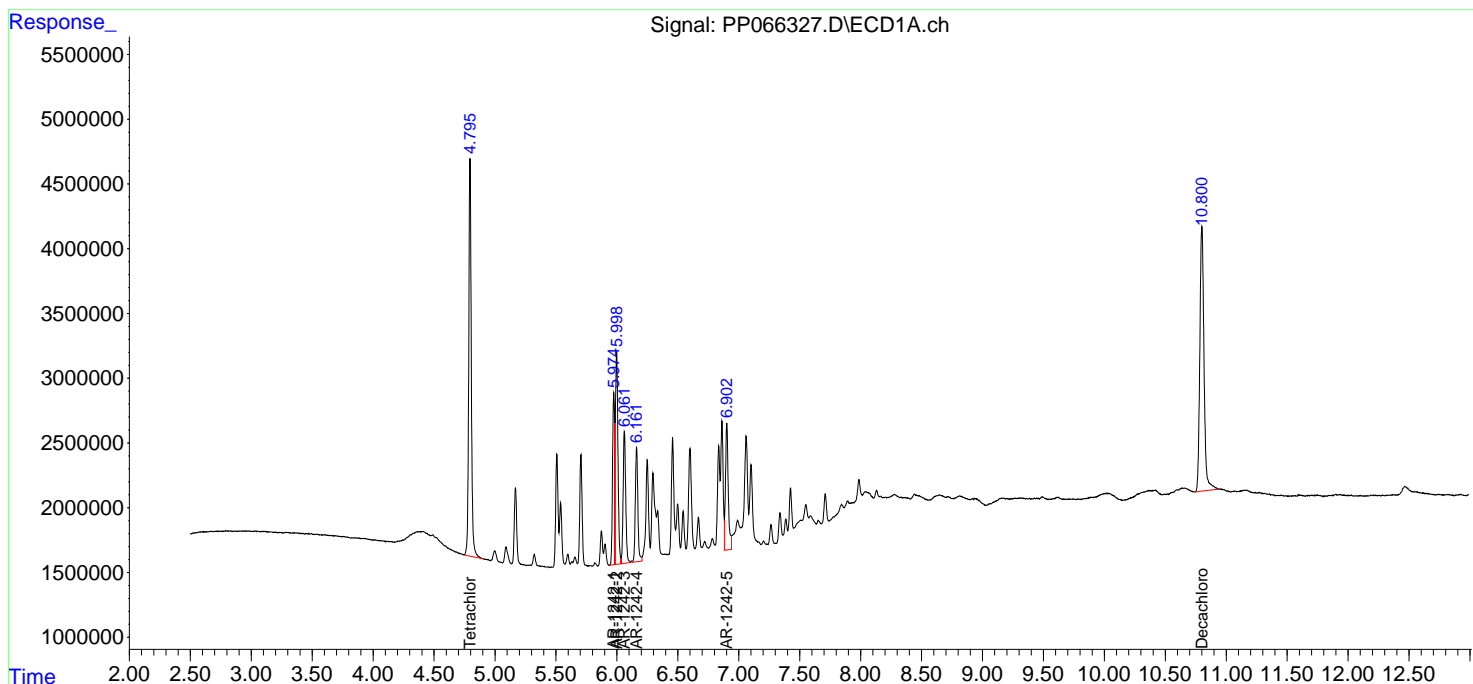
(f)=RT Delta > 1/2 Window (#)=Amounts differ by > 25% (m)=manual int.

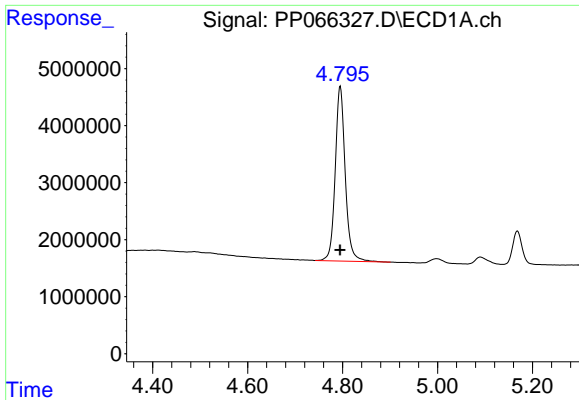
Data Path : Z:\pestpcbsrv\HPCHEM1\ECD_P\Data\PP071524\
 Data File : PP066327.D
 Signal(s) : Signal #1: ECD1A.ch Signal #2: ECD2B.ch
 Acq On : 15 Jul 2024 19:40
 Operator : YP\AJ
 Sample : AR1242ICC250
 Misc :
 ALS Vial : 13 Sample Multiplier: 1

Instrument :
 ECD_P
 ClientSampleId :
 AR1242ICC250

Integration File signal 1: autoint1.e
 Integration File signal 2: autoint2.e
 Quant Time: Jul 16 06:46:27 2024
 Quant Method : Z:\pestpcbsrv\HPCHEM1\ECD_P\methods\PP071624.M
 Quant Title : GC EXTRACTABLES
 QLast Update : Tue Jul 16 06:42:15 2024
 Response via : Initial Calibration
 Integrator: ChemStation

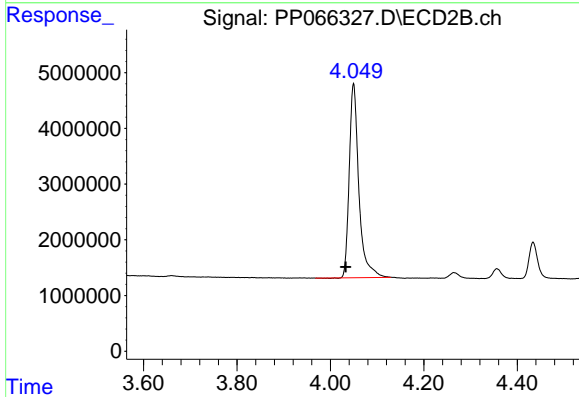
Volume Inj. : 2 µl
 Signal #1 Phase : ZB-MR1 Signal #2 Phase: ZB-MR2
 Signal #1 Info : 30Mx0.32mmx 0.50µ Signal #2 Info : 30M x 0.32mm x 0.25µm



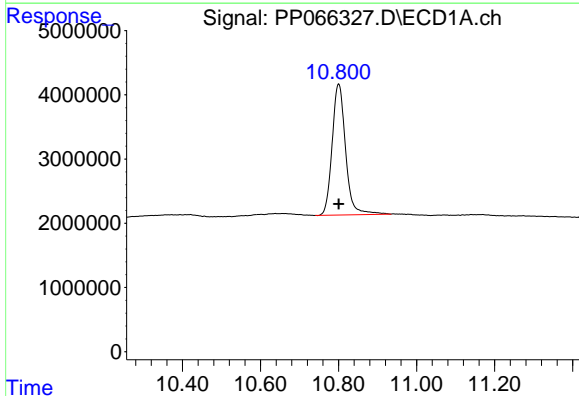


#1 Tetrachloro-m-xylene
 R.T.: 4.795 min
 Delta R.T.: 0.000 min
 Response: 45052822
 Conc: 24.56 ng/ml

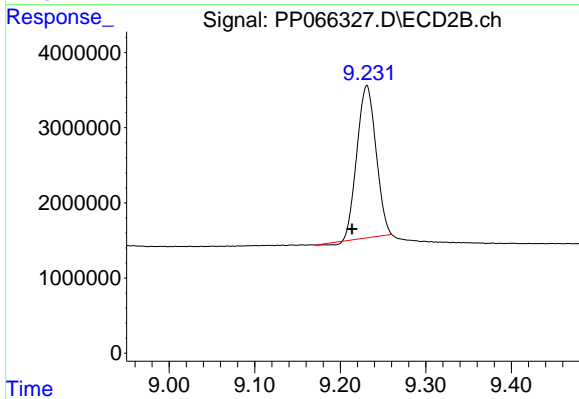
Instrument :
 ECD_P
 ClientSampleId :
 AR1242ICC250



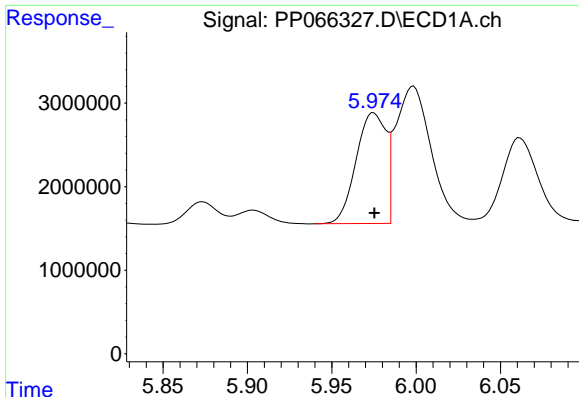
#1 Tetrachloro-m-xylene
 R.T.: 4.050 min
 Delta R.T.: 0.017 min
 Response: 49903417
 Conc: 25.29 ng/ml



#2 Decachlorobiphenyl
 R.T.: 10.800 min
 Delta R.T.: 0.000 min
 Response: 48799462
 Conc: 26.54 ng/ml



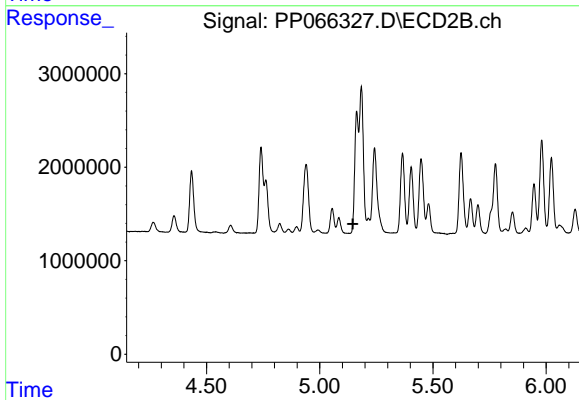
#2 Decachlorobiphenyl
 R.T.: 9.231 min
 Delta R.T.: 0.017 min
 Response: 31413924
 Conc: 23.94 ng/ml



#16 AR-1242-1

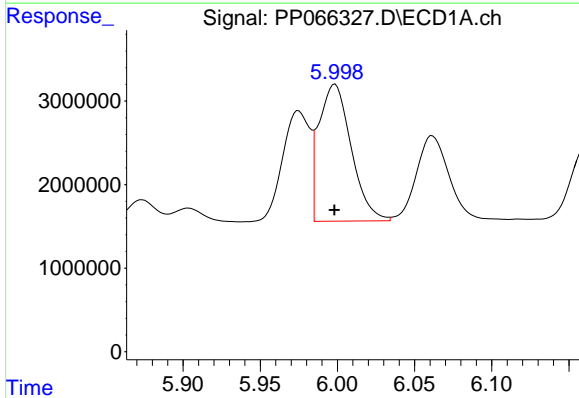
R.T.: 5.975 min
 Delta R.T.: 0.000 min
 Response: 16296260
 Conc: 266.04 ng/ml

Instrument :
 ECD_P
 ClientSampleId :
 AR1242ICC250



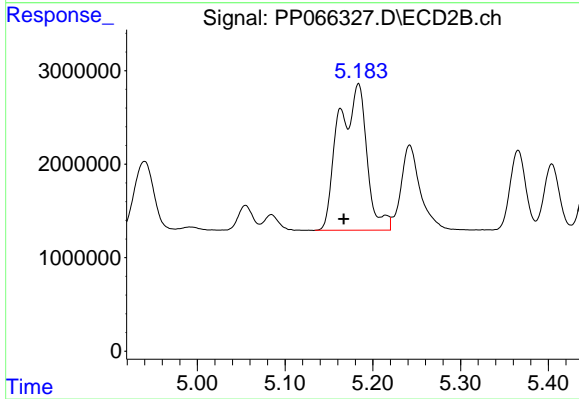
#16 AR-1242-1

R.T.: 0.000 min
 Exp R.T. : 5.147 min
 Response: 0
 Conc: N.D.



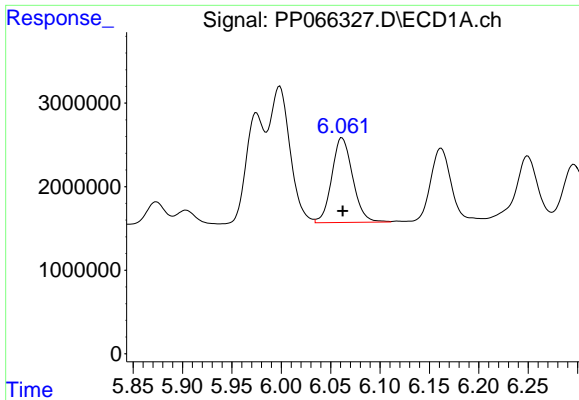
#17 AR-1242-2

R.T.: 5.998 min
 Delta R.T.: 0.000 min
 Response: 23901675
 Conc: 257.33 ng/ml



#17 AR-1242-2

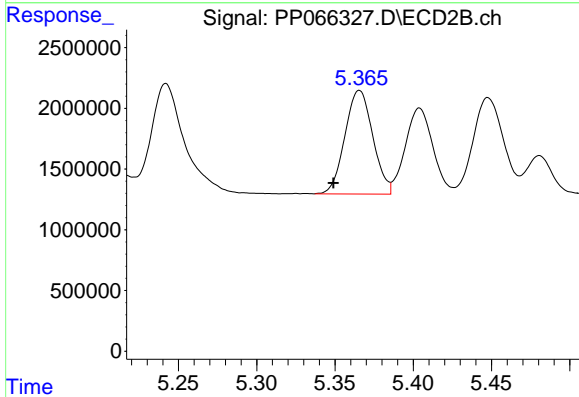
R.T.: 5.183 min
 Delta R.T.: 0.017 min
 Response: 34920116
 Conc: 468.75 ng/ml



#18 AR-1242-3

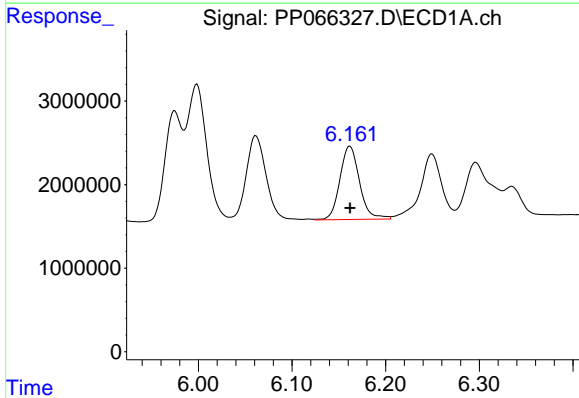
R.T.: 6.061 min
 Delta R.T.: 0.000 min
 Response: 14994681
 Conc: 258.50 ng/ml

Instrument :
 ECD_P
 ClientSampleId :
 AR1242ICC250



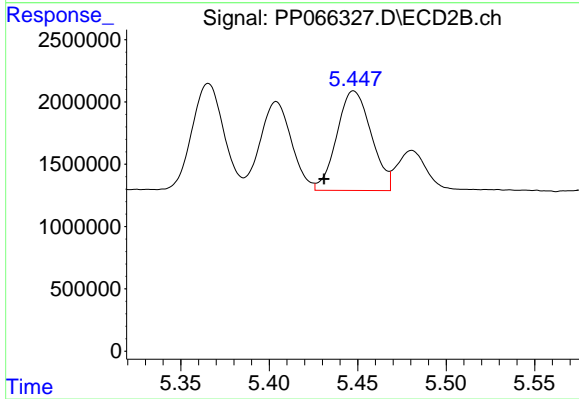
#18 AR-1242-3

R.T.: 5.366 min
 Delta R.T.: 0.017 min
 Response: 10574156
 Conc: 264.80 ng/ml



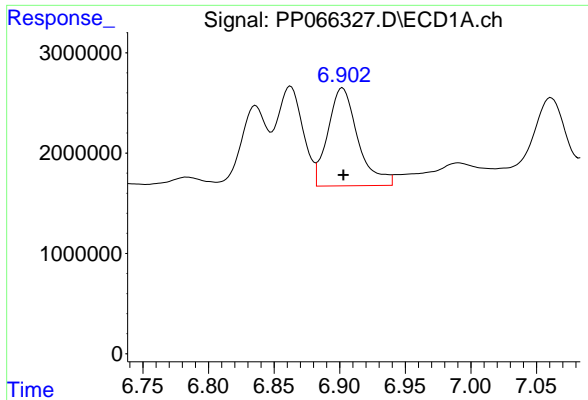
#19 AR-1242-4

R.T.: 6.162 min
 Delta R.T.: 0.000 min
 Response: 12779668
 Conc: 265.38 ng/ml



#19 AR-1242-4

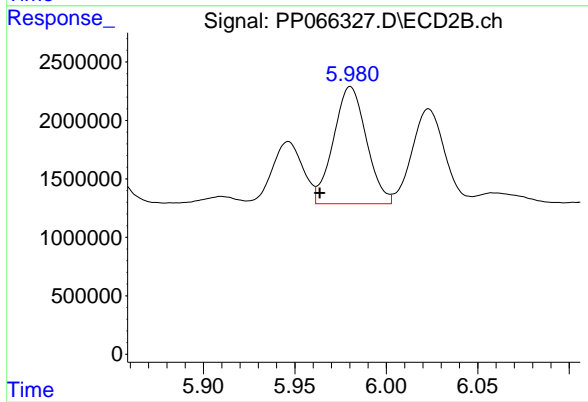
R.T.: 5.448 min
 Delta R.T.: 0.017 min
 Response: 10820341
 Conc: 270.49 ng/ml



#20 AR-1242-5

R.T.: 6.902 min
Delta R.T.: 0.000 min
Response: 15574313
Conc: 289.56 ng/ml

Instrument :
ECD_P
ClientSampleId :
AR1242ICC250



#20 AR-1242-5

R.T.: 5.980 min
Delta R.T.: 0.017 min
Response: 12574361
Conc: 268.53 ng/ml