

Data Path : Z:\pestpcbsrv\HPCHEM1\ECD_P\Data\PP071625\
 Data File : PP073846.D
 Signal(s) : Signal #1: ECD1A.ch Signal #2: ECD2B.ch
 Acq On : 16 Jul 2025 10:50
 Operator : YP\AJ
 Sample : PB168851BL
 Misc :
 ALS Vial : 8 Sample Multiplier: 1

Instrument :
 ECD_P
 ClientSampleId :
 PB168851BL

Integration File signal 1: autoint1.e
 Integration File signal 2: autoint2.e
 Quant Time: Jul 16 11:37:11 2025
 Quant Method : Z:\pestpcbsrv\HPCHEM1\ECD_P\methods\PP070825.M
 Quant Title : GC EXTRACTABLES
 QLast Update : Tue Jul 08 08:35:32 2025
 Response via : Initial Calibration
 Integrator: ChemStation

Volume Inj. : 2 µl
 Signal #1 Phase : ZB-MR1 Signal #2 Phase: ZB-MR2
 Signal #1 Info : 30Mx0.32mmx 0.50µ Signal #2 Info : 30M x 0.32mm x 0.25µm

| Compound | RT#1 | RT#2 | Resp#1 | Resp#2 | ng/ml | ng/ml |
|-----------------------------|--------|--------|----------|----------|--------|----------|
| System Monitoring Compounds | | | | | | |
| 1) SA Tetrachlo... | 4.484 | 3.775 | 25912527 | 35481480 | 18.921 | 19.259 |
| 2) SA Decachlor... | 10.167 | 8.773 | 21040350 | 29294498 | 19.284 | 22.140 |
| Target Compounds | | | | | | |
| 3) L1 AR-1016-1 | 5.637 | 4.860 | 169009 | 222955 | 3.557 | 3.270 |
| 4) L1 AR-1016-2 | 5.659 | 4.860 | 73574 | 222955 | 1.033 | 2.188 # |
| 5) L1 AR-1016-3 | 5.708 | 5.048 | 172525 | 175286 | 3.951 | 3.240 |
| 6) L1 AR-1016-4 | 5.819 | 5.091 | 196025 | 207285 | 5.453 | 4.724 |
| 7) L1 AR-1016-5 | 6.125 | 5.306 | 166765 | 668876 | 5.323 | 12.254 # |
| 8) L2 AR-1221-1 | 4.677 | 3.992 | 27274 | 90402 | 1.527 | 3.343 # |
| 9) L2 AR-1221-2 | 4.786 | 4.076 | 422255 | 657512 | 31.268 | 32.294 |
| 10) L2 AR-1221-3 | 4.854 | 4.154 | 40435 | 31208 | 0.972 | 0.508 # |
| 11) L3 AR-1232-1 | 4.854 | 4.154 | 40435 | 31208 | 1.238 | 0.669 # |
| 12) L3 AR-1232-2 | 5.372 | 4.860 | 383026 | 222955 | 23.564 | 4.678 # |
| 13) L3 AR-1232-3 | 5.659 | 5.048 | 73574 | 175286 | 2.230 | 7.003 # |
| 14) L3 AR-1232-4 | 5.819 | 5.130 | 196025 | 216320 | 11.920 | 9.989 |
| 15) L3 AR-1232-5 | 5.920 | 5.306 | 226739 | 668876 | 21.450 | 29.644 # |
| 16) L4 AR-1242-1 | 5.637 | 4.860 | 169009 | 222955 | 4.426 | 3.860 |
| 17) L4 AR-1242-2 | 5.659 | 4.860 | 73574 | 222955 | 1.229 | 2.579 # |
| 18) L4 AR-1242-3 | 5.708 | 5.048 | 172525 | 175286 | 4.711 | 3.815 |
| 19) L4 AR-1242-4 | 5.819 | 5.130 | 196025 | 216320 | 6.100 | 4.887 |
| 20) L4 AR-1242-5 | 6.547 | 5.644 | 579321 | 219546 | 17.696 | 3.974 # |
| 21) L5 AR-1248-1 | 5.637 | 4.860 | 169009 | 222955 | 5.475 | 4.966 |
| 22) L5 AR-1248-2 | 5.920 | 5.091 | 226739 | 207285 | 5.679 | 3.368 # |
| 23) L5 AR-1248-3 | 6.125 | 5.130 | 166765 | 216320 | 3.755 | 3.377 |
| 24) L5 AR-1248-4 | 6.521 | 5.306 | 636225 | 668876 | 11.551 | 8.874 |
| 25) L5 AR-1248-5 | 6.547 | 5.677 | 579321 | 1471417 | 10.770 | 19.726 # |
| 26) L6 AR-1254-1 | 6.484 | 5.644 | 777838 | 219546 | 14.515 | 1.892 # |
| 27) L6 AR-1254-2 | 6.694 | 5.797 | 920651 | 614940 | 11.054 | 6.111 # |
| 28) L6 AR-1254-3 | 7.064 | 6.216 | 2950248 | 138710 | 33.400 | 0.898 # |
| 29) L6 AR-1254-4 | 7.337 | 6.442 | 262928 | 527996 | 3.342 | 5.584 # |
| 30) L6 AR-1254-5 | 7.750 | 6.867 | 562639 | 128940 | 7.636 | 0.966 # |
| 31) L7 AR-1260-1 | 7.227 | 6.341 | 325503 | 77095 | 5.521 | 0.790 # |
| 32) L7 AR-1260-2 | 7.477 | 6.535 | 431109 | 45529 | 4.498 | 0.371 # |
| 33) L7 AR-1260-3 | 7.854 | 6.684 | 380431 | 90012 | 5.206 | 0.822 # |
| 34) L7 AR-1260-4 | 8.057 | 7.160 | 229453 | 297220 | 3.514 | 3.324 |
| 35) L7 AR-1260-5 | 8.384 | 7.402 | 311456 | 600943 | 2.065 | 2.674 # |
| 36) L8 AR-1262-1 | 8.057 | 6.867 | 229453 | 128940 | 2.637 | 0.873 # |
| 37) L8 AR-1262-2 | 8.384 | 7.160 | 311456 | 297220 | 1.573 | 2.325 # |
| 38) L8 AR-1262-3 | 8.692 | 7.686 | 939669 | 755504 | 7.474 | 6.626 |
| 39) L8 AR-1262-4 | 8.743f | 7.708 | 499722 | 469332 | 5.358 | 2.550 # |
| 40) L8 AR-1262-5 | 9.416 | 8.186f | 19561 | 57578 | 0.309 | 0.682 # |
| 41) L9 AR-1268-1 | 8.692 | 7.686 | 939669 | 755504 | 4.210 | 2.458 # |

Data Path : Z:\pestpcbsrv\HPCHEM1\ECD_P\Data\PP071625\
 Data File : PP073846.D
 Signal(s) : Signal #1: ECD1A.ch Signal #2: ECD2B.ch
 Acq On : 16 Jul 2025 10:50
 Operator : YP\AJ
 Sample : PB168851BL
 Misc :
 ALS Vial : 8 Sample Multiplier: 1

Instrument :
 ECD_P
 ClientSampleId :
 PB168851BL

Integration File signal 1: autoint1.e
 Integration File signal 2: autoint2.e
 Quant Time: Jul 16 11:37:11 2025
 Quant Method : Z:\pestpcbsrv\HPCHEM1\ECD_P\methods\PP070825.M
 Quant Title : GC EXTRACTABLES
 QLast Update : Tue Jul 08 08:35:32 2025
 Response via : Initial Calibration
 Integrator: ChemStation

Volume Inj. : 2 µl
 Signal #1 Phase : ZB-MR1 Signal #2 Phase: ZB-MR2
 Signal #1 Info : 30Mx0.32mmx 0.50µ Signal #2 Info : 30M x 0.32mm x 0.25µm

| | Compound | RT#1 | RT#2 | Resp#1 | Resp#2 | ng/ml | ng/ml |
|-----|--------------|--------|--------|--------|--------|-------|---------|
| 42) | L9 AR-1268-2 | 8.743f | 7.708 | 499722 | 469332 | 2.623 | 1.766 # |
| 43) | L9 AR-1268-3 | 9.035 | 7.934 | 99701 | 147715 | 0.602 | 0.655 |
| 44) | L9 AR-1268-4 | 9.416 | 8.186f | 19561 | 57578 | 0.281 | 0.619 # |
| 45) | L9 AR-1268-5 | 9.839 | 8.530 | 100377 | 75364 | 0.218 | 0.122 # |

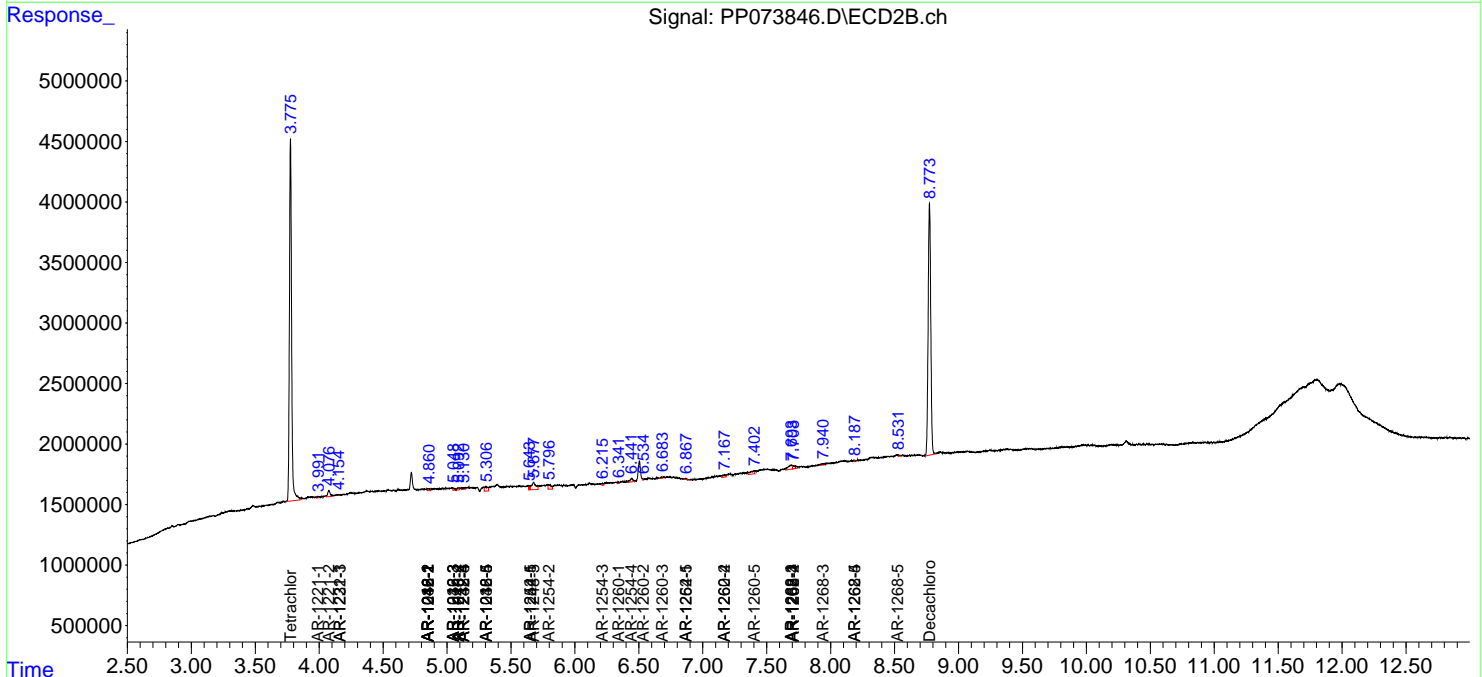
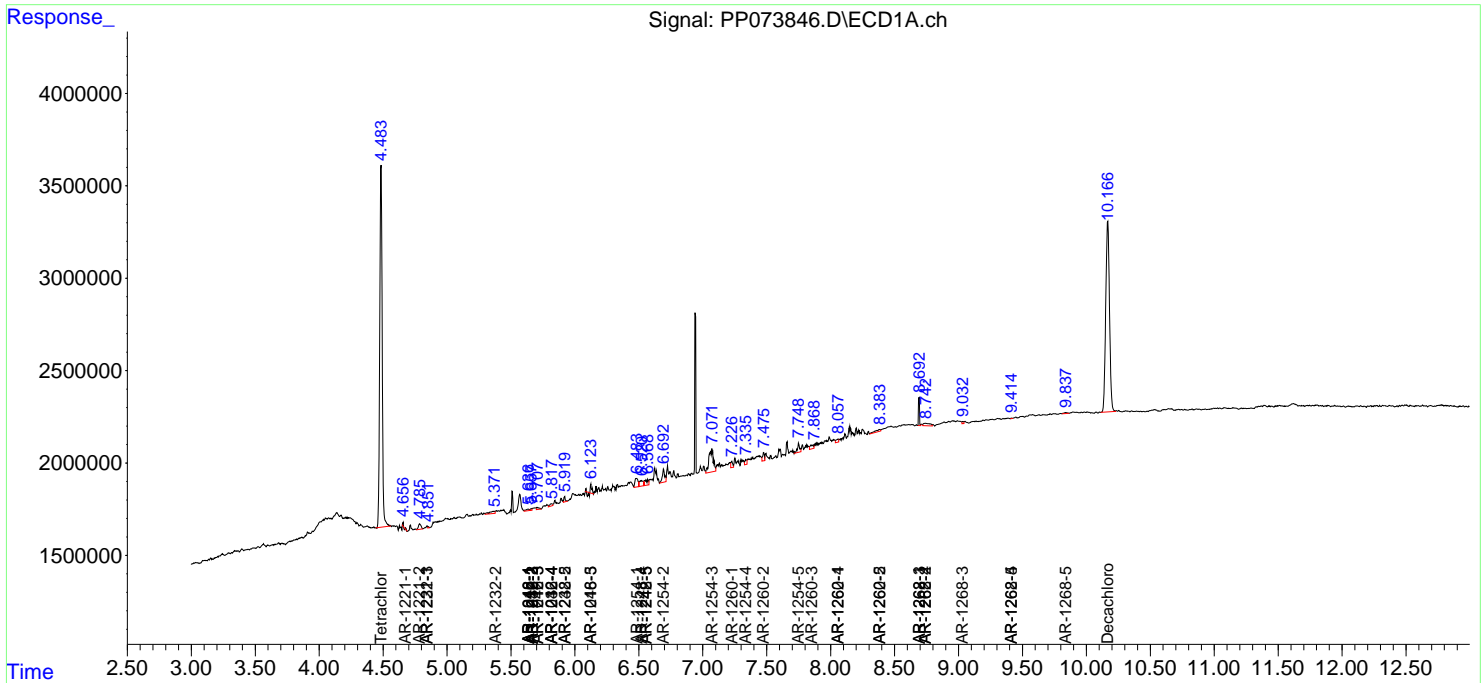
(f)=RT Delta > 1/2 Window (#)=Amounts differ by > 25% (m)=manual int.

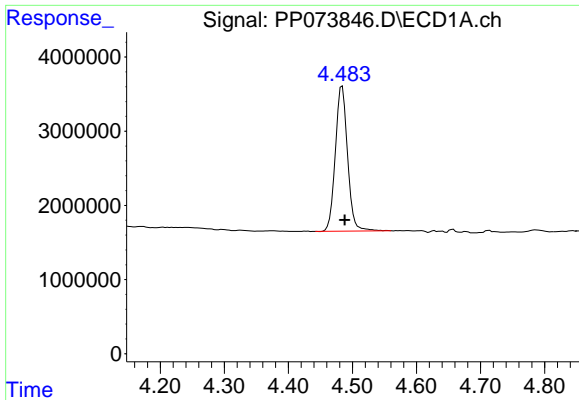
Data Path : Z:\pestpcbsrv\HPCHEM1\ECD_P\Data\PP071625\
 Data File : PP073846.D
 Signal(s) : Signal #1: ECD1A.ch Signal #2: ECD2B.ch
 Acq On : 16 Jul 2025 10:50
 Operator : YP\AJ
 Sample : PB168851BL
 Misc :
 ALS Vial : 8 Sample Multiplier: 1

Instrument :
 ECD_P
 ClientSampleId :
 PB168851BL

Integration File signal 1: autoint1.e
 Integration File signal 2: autoint2.e
 Quant Time: Jul 16 11:37:11 2025
 Quant Method : Z:\pestpcbsrv\HPCHEM1\ECD_P\methods\PP070825.M
 Quant Title : GC EXTRACTABLES
 QLast Update : Tue Jul 08 08:35:32 2025
 Response via : Initial Calibration
 Integrator: ChemStation

Volume Inj. : 2 µl
 Signal #1 Phase : ZB-MR1 Signal #2 Phase: ZB-MR2
 Signal #1 Info : 30Mx0.32mmx 0.50µ Signal #2 Info : 30M x 0.32mm x 0.25µm

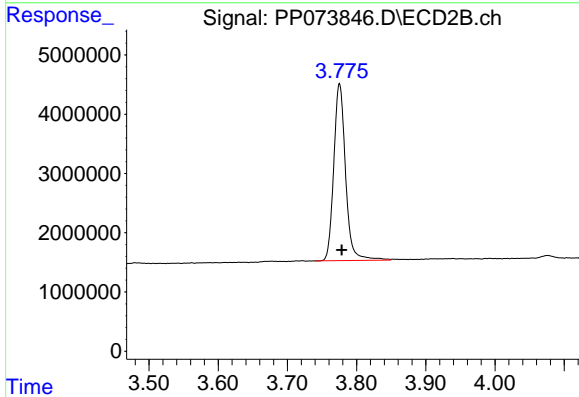




#1 Tetrachloro-m-xylene

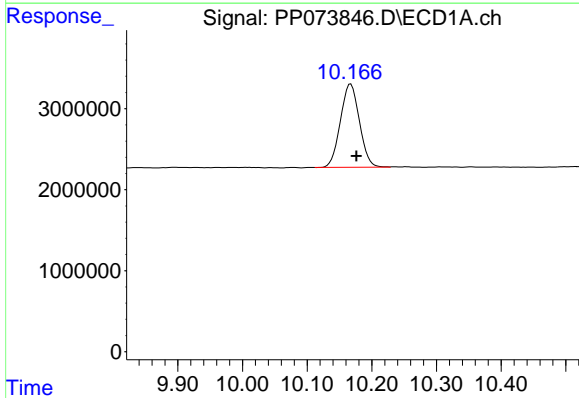
R.T.: 4.484 min
 Delta R.T.: -0.004 min
 Response: 25912527
 Conc: 18.92 ng/ml

Instrument :
 ECD_P
 ClientSampleId :
 PB168851BL



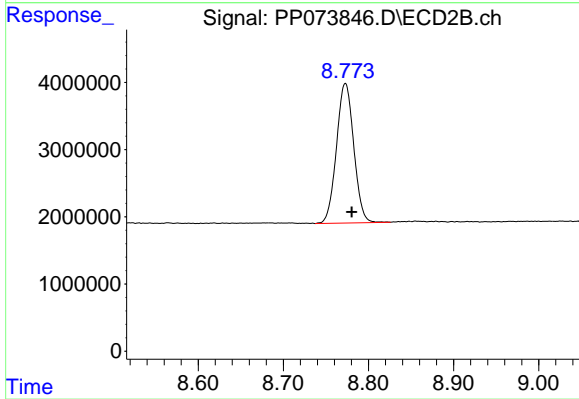
#1 Tetrachloro-m-xylene

R.T.: 3.775 min
 Delta R.T.: -0.003 min
 Response: 35481480
 Conc: 19.26 ng/ml



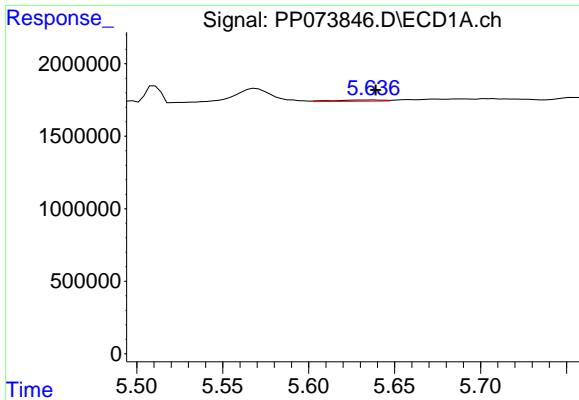
#2 Decachlorobiphenyl

R.T.: 10.167 min
 Delta R.T.: -0.009 min
 Response: 21040350
 Conc: 19.28 ng/ml



#2 Decachlorobiphenyl

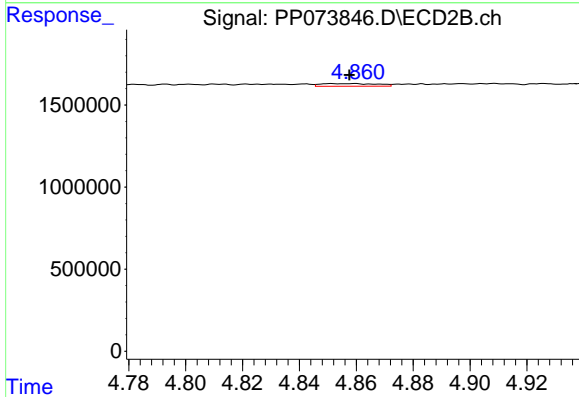
R.T.: 8.773 min
 Delta R.T.: -0.007 min
 Response: 29294498
 Conc: 22.14 ng/ml



#3 AR-1016-1

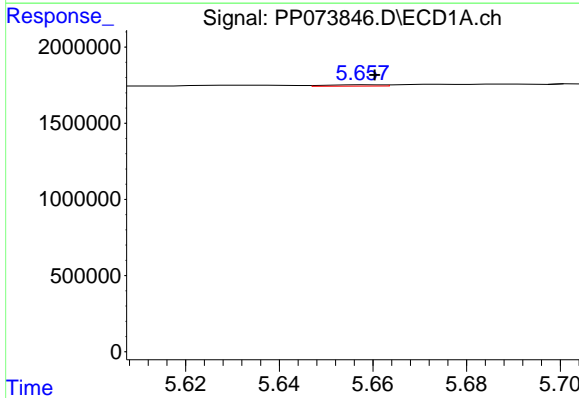
R.T.: 5.637 min
 Delta R.T.: -0.002 min
 Response: 169009
 Conc: 3.56 ng/ml

Instrument :
 ECD_P
 ClientSampleId :
 PB168851BL



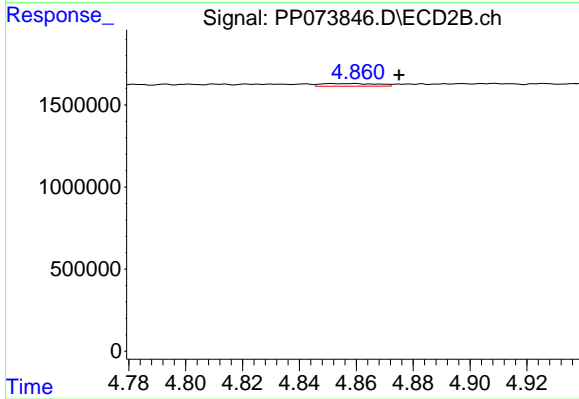
#3 AR-1016-1

R.T.: 4.860 min
 Delta R.T.: 0.002 min
 Response: 222955
 Conc: 3.27 ng/ml



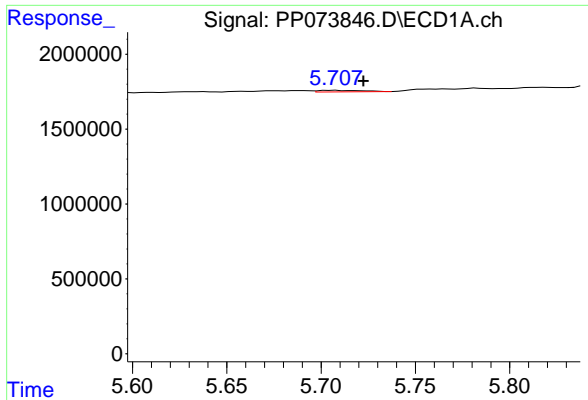
#4 AR-1016-2

R.T.: 5.659 min
 Delta R.T.: -0.002 min
 Response: 73574
 Conc: 1.03 ng/ml



#4 AR-1016-2

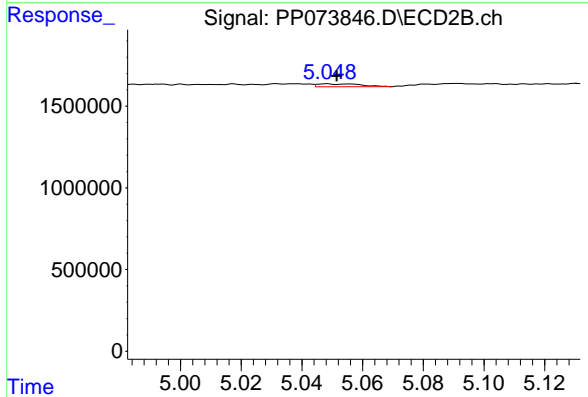
R.T.: 4.860 min
 Delta R.T.: -0.015 min
 Response: 222955
 Conc: 2.19 ng/ml



#5 AR-1016-3

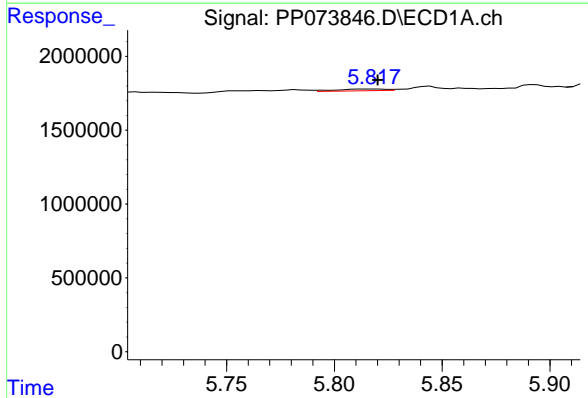
R.T.: 5.708 min
 Delta R.T.: -0.015 min
 Response: 172525
 Conc: 3.95 ng/ml

Instrument :
 ECD_P
 ClientSampleId :
 PB168851BL



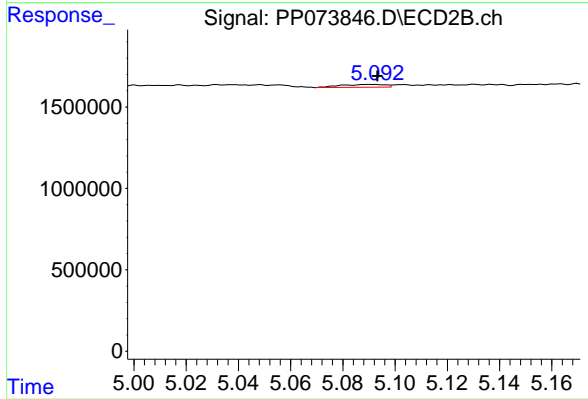
#5 AR-1016-3

R.T.: 5.048 min
 Delta R.T.: -0.003 min
 Response: 175286
 Conc: 3.24 ng/ml



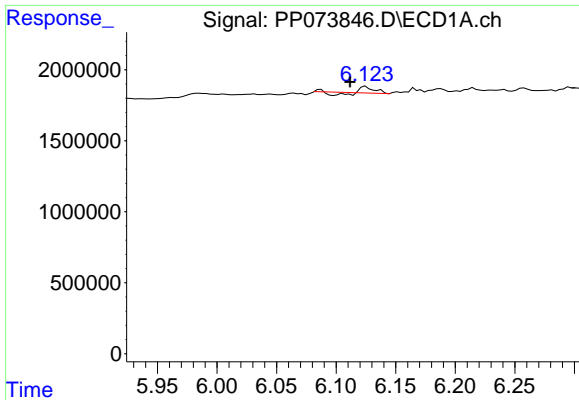
#6 AR-1016-4

R.T.: 5.819 min
 Delta R.T.: -0.002 min
 Response: 196025
 Conc: 5.45 ng/ml



#6 AR-1016-4

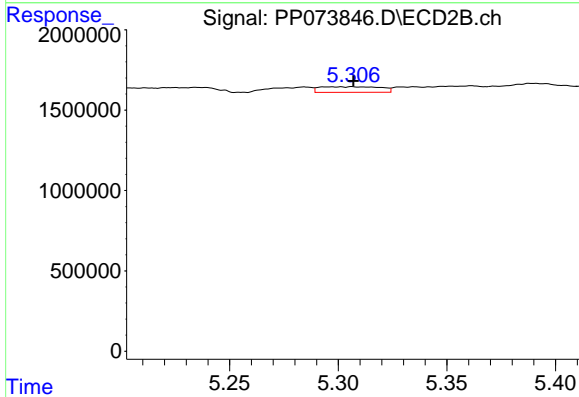
R.T.: 5.091 min
 Delta R.T.: -0.003 min
 Response: 207285
 Conc: 4.72 ng/ml



#7 AR-1016-5

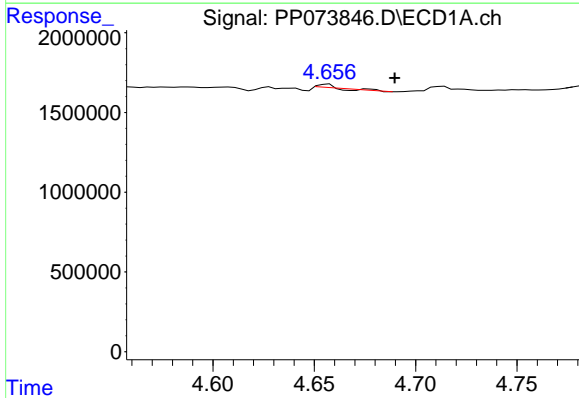
R.T.: 6.125 min
 Delta R.T.: 0.013 min
 Response: 166765
 Conc: 5.32 ng/ml

Instrument :
 ECD_P
 ClientSampleId :
 PB168851BL



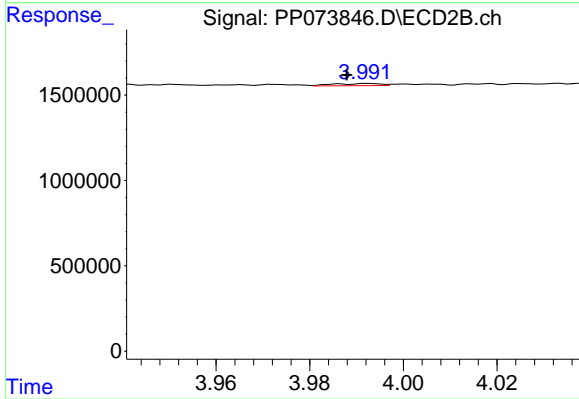
#7 AR-1016-5

R.T.: 5.306 min
 Delta R.T.: 0.000 min
 Response: 668876
 Conc: 12.25 ng/ml



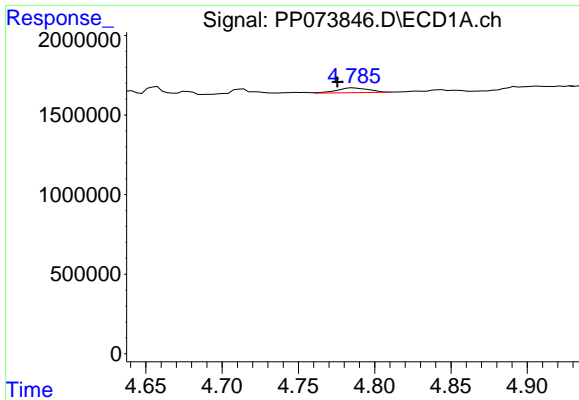
#8 AR-1221-1

R.T.: 4.677 min
 Delta R.T.: -0.013 min
 Response: 27274
 Conc: 1.53 ng/ml



#8 AR-1221-1

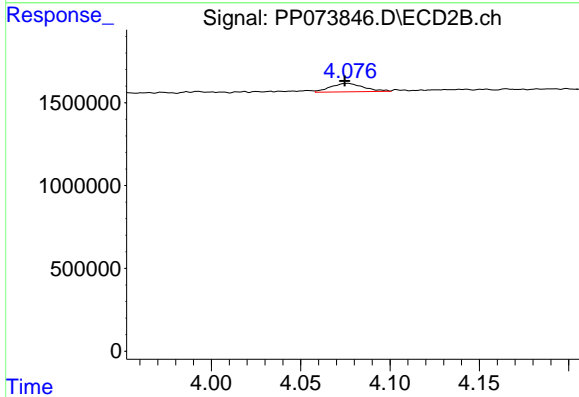
R.T.: 3.992 min
 Delta R.T.: 0.004 min
 Response: 90402
 Conc: 3.34 ng/ml



#9 AR-1221-2

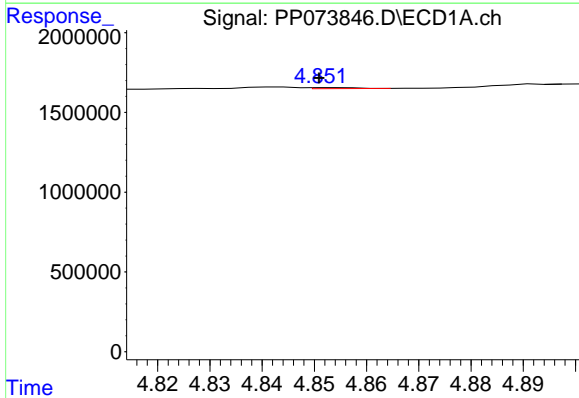
R.T.: 4.786 min
 Delta R.T.: 0.011 min
 Response: 422255
 Conc: 31.27 ng/ml

Instrument :
 ECD_P
 ClientSampleId :
 PB168851BL



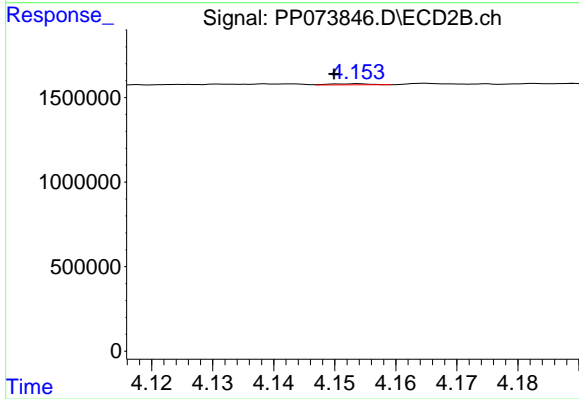
#9 AR-1221-2

R.T.: 4.076 min
 Delta R.T.: 0.002 min
 Response: 657512
 Conc: 32.29 ng/ml



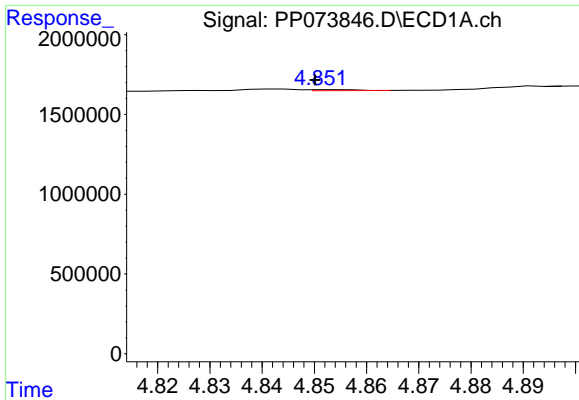
#10 AR-1221-3

R.T.: 4.854 min
 Delta R.T.: 0.003 min
 Response: 40435
 Conc: 0.97 ng/ml



#10 AR-1221-3

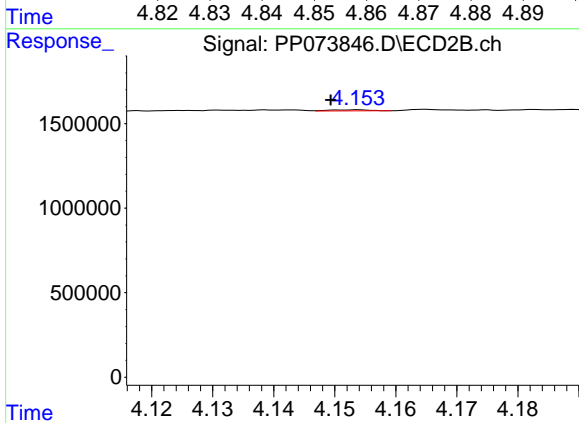
R.T.: 4.154 min
 Delta R.T.: 0.004 min
 Response: 31208
 Conc: 0.51 ng/ml



#11 AR-1232-1

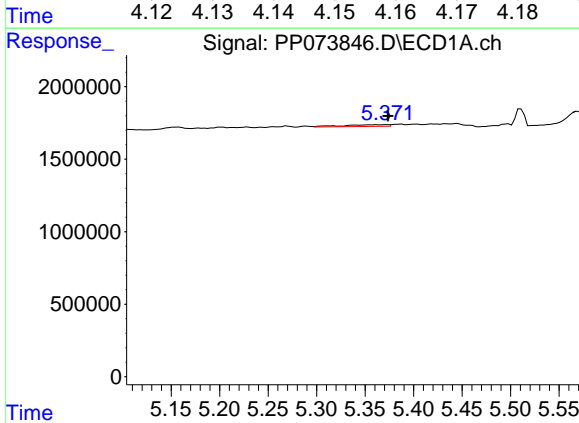
R.T.: 4.854 min
 Delta R.T.: 0.004 min
 Response: 40435
 Conc: 1.24 ng/ml

Instrument :
 ECD_P
 ClientSampleId :
 PB168851BL



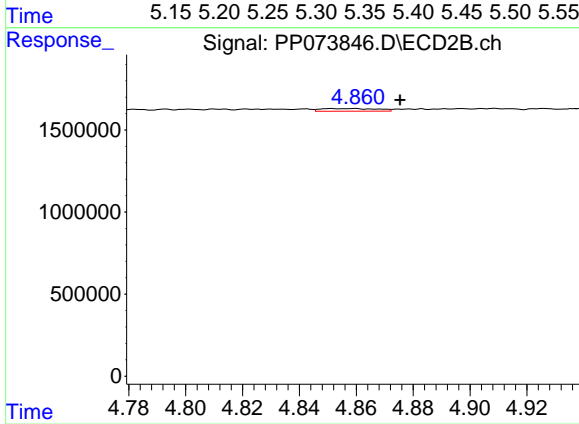
#11 AR-1232-1

R.T.: 4.154 min
 Delta R.T.: 0.005 min
 Response: 31208
 Conc: 0.67 ng/ml



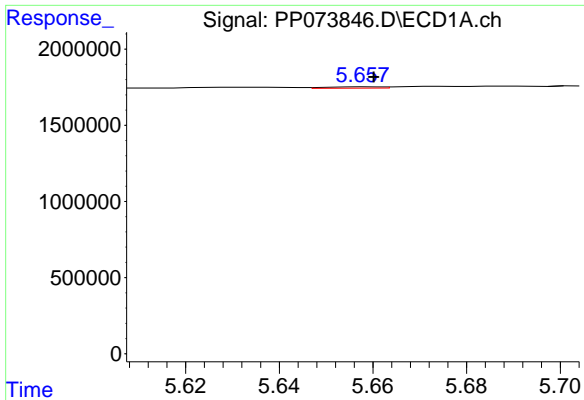
#12 AR-1232-2

R.T.: 5.372 min
 Delta R.T.: -0.001 min
 Response: 383026
 Conc: 23.56 ng/ml



#12 AR-1232-2

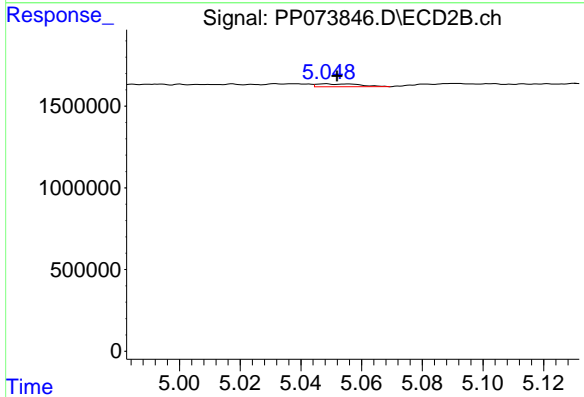
R.T.: 4.860 min
 Delta R.T.: -0.016 min
 Response: 222955
 Conc: 4.68 ng/ml



#13 AR-1232-3

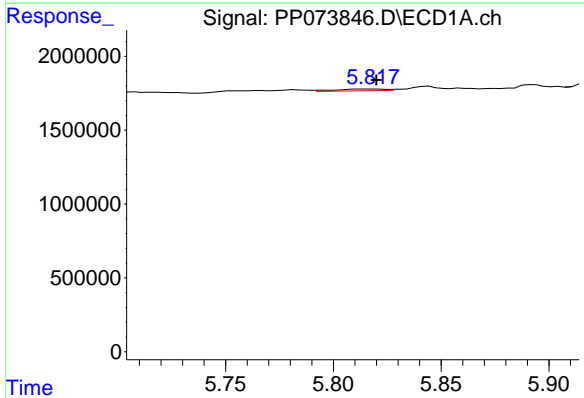
R.T.: 5.659 min
 Delta R.T.: -0.002 min
 Response: 73574
 Conc: 2.23 ng/ml

Instrument :
 ECD_P
 ClientSampleId :
 PB168851BL



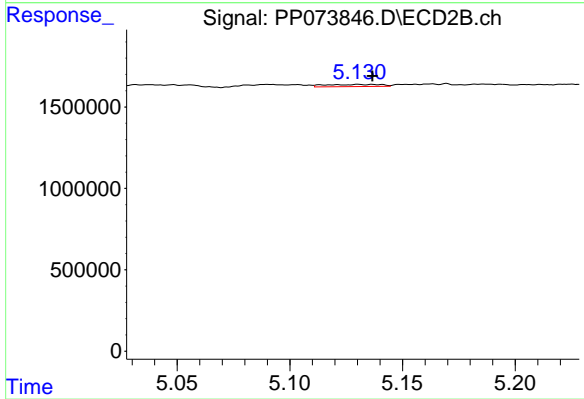
#13 AR-1232-3

R.T.: 5.048 min
 Delta R.T.: -0.004 min
 Response: 175286
 Conc: 7.00 ng/ml



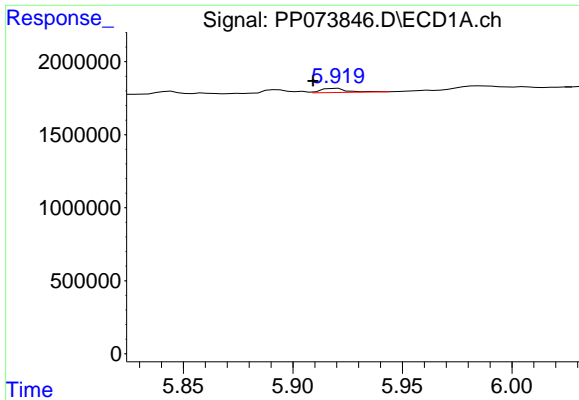
#14 AR-1232-4

R.T.: 5.819 min
 Delta R.T.: -0.001 min
 Response: 196025
 Conc: 11.92 ng/ml



#14 AR-1232-4

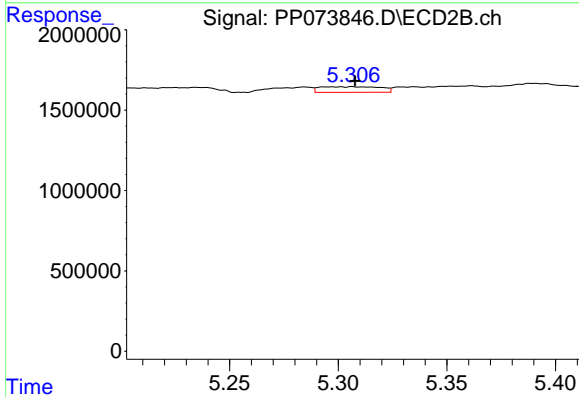
R.T.: 5.130 min
 Delta R.T.: -0.006 min
 Response: 216320
 Conc: 9.99 ng/ml



#15 AR-1232-5

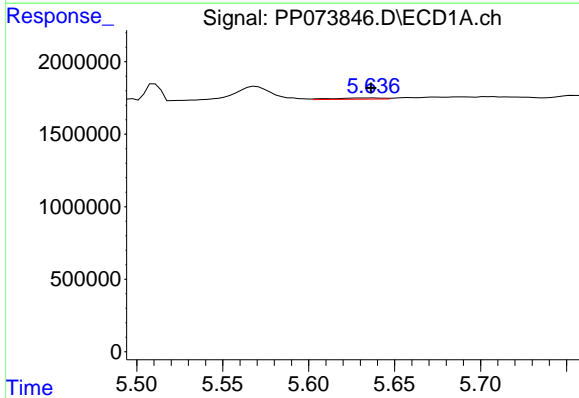
R.T.: 5.920 min
 Delta R.T.: 0.010 min
 Response: 226739
 Conc: 21.45 ng/ml

Instrument :
 ECD_P
 ClientSampleId :
 PB168851BL



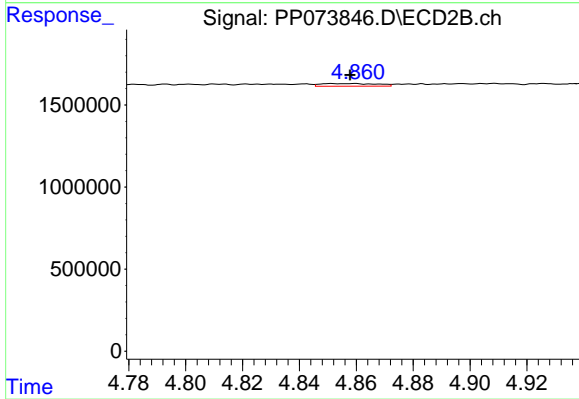
#15 AR-1232-5

R.T.: 5.306 min
 Delta R.T.: -0.001 min
 Response: 668876
 Conc: 29.64 ng/ml



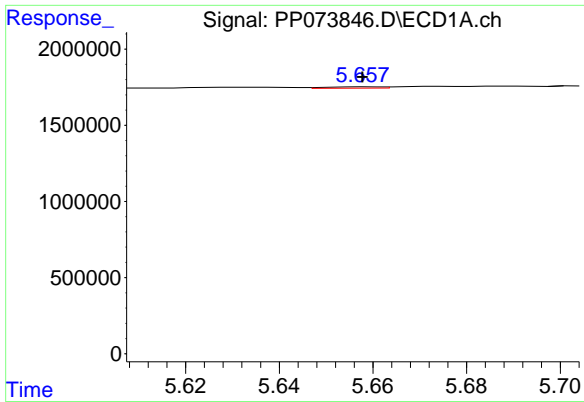
#16 AR-1242-1

R.T.: 5.637 min
 Delta R.T.: 0.000 min
 Response: 169009
 Conc: 4.43 ng/ml



#16 AR-1242-1

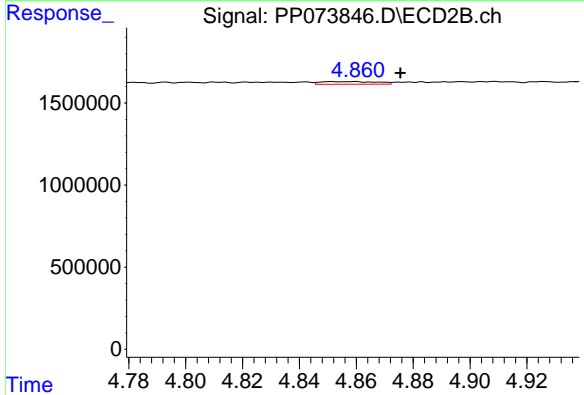
R.T.: 4.860 min
 Delta R.T.: 0.002 min
 Response: 222955
 Conc: 3.86 ng/ml



#17 AR-1242-2

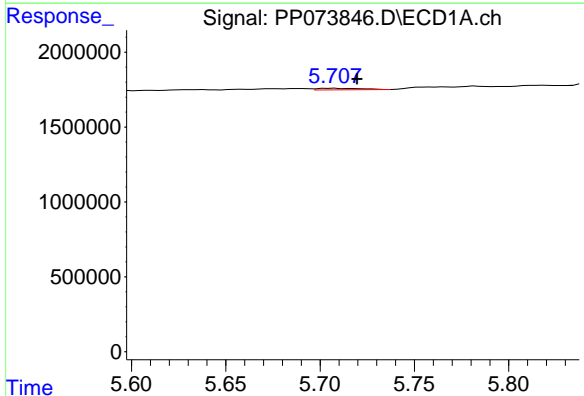
R.T.: 5.659 min
 Delta R.T.: 0.000 min
 Response: 73574
 Conc: 1.23 ng/ml

Instrument :
 ECD_P
 ClientSampleId :
 PB168851BL



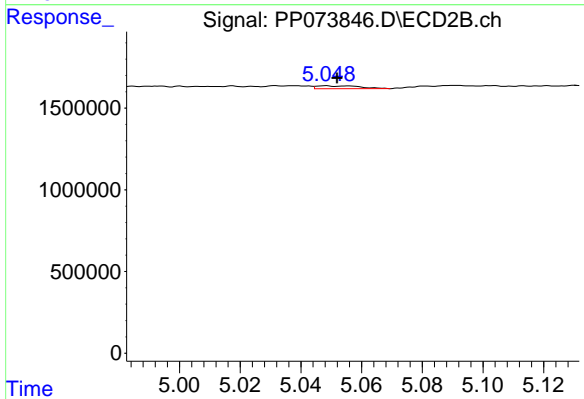
#17 AR-1242-2

R.T.: 4.860 min
 Delta R.T.: -0.016 min
 Response: 222955
 Conc: 2.58 ng/ml



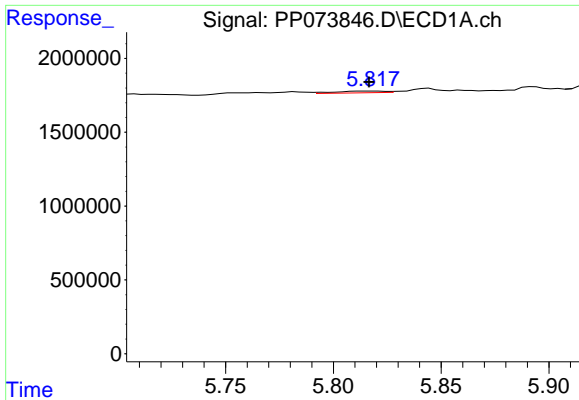
#18 AR-1242-3

R.T.: 5.708 min
 Delta R.T.: -0.012 min
 Response: 172525
 Conc: 4.71 ng/ml



#18 AR-1242-3

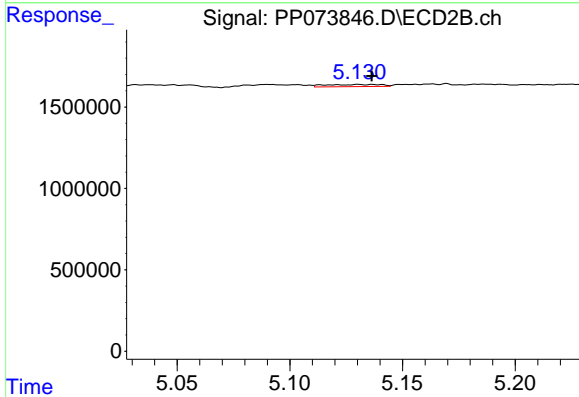
R.T.: 5.048 min
 Delta R.T.: -0.004 min
 Response: 175286
 Conc: 3.81 ng/ml



#19 AR-1242-4

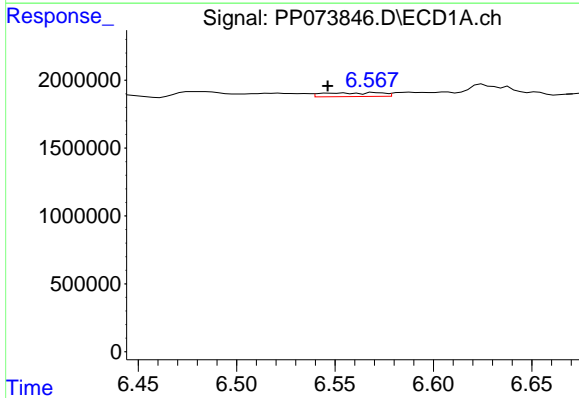
R.T.: 5.819 min
 Delta R.T.: 0.002 min
 Response: 196025
 Conc: 6.10 ng/ml

Instrument :
 ECD_P
 ClientSampleId :
 PB168851BL



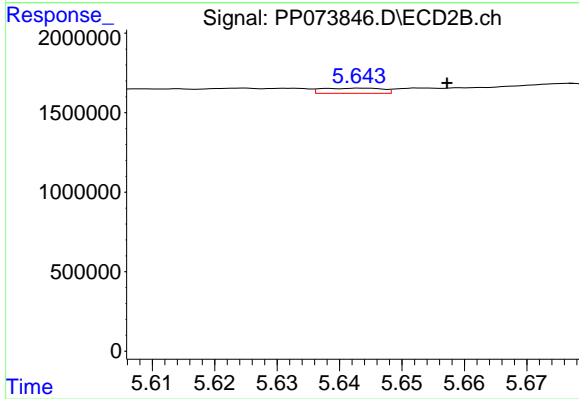
#19 AR-1242-4

R.T.: 5.130 min
 Delta R.T.: -0.006 min
 Response: 216320
 Conc: 4.89 ng/ml



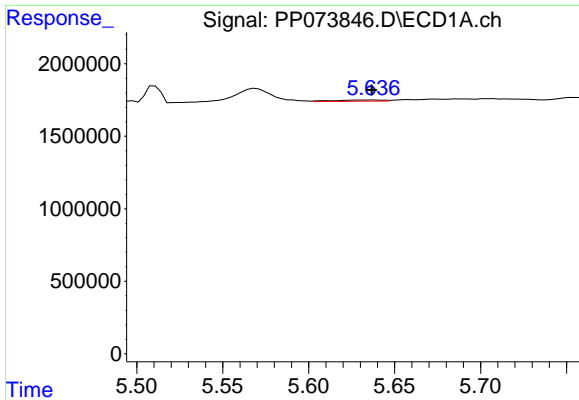
#20 AR-1242-5

R.T.: 6.547 min
 Delta R.T.: 0.000 min
 Response: 579321
 Conc: 17.70 ng/ml



#20 AR-1242-5

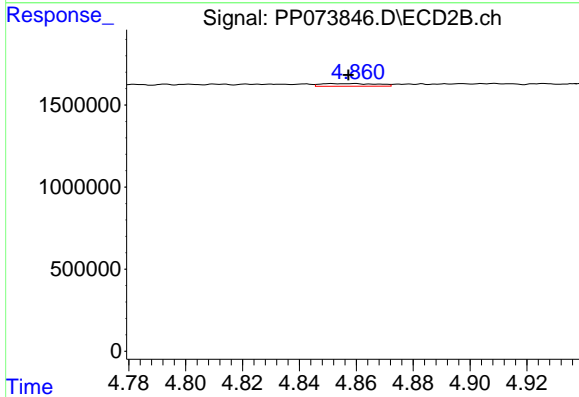
R.T.: 5.644 min
 Delta R.T.: -0.013 min
 Response: 219546
 Conc: 3.97 ng/ml



#21 AR-1248-1

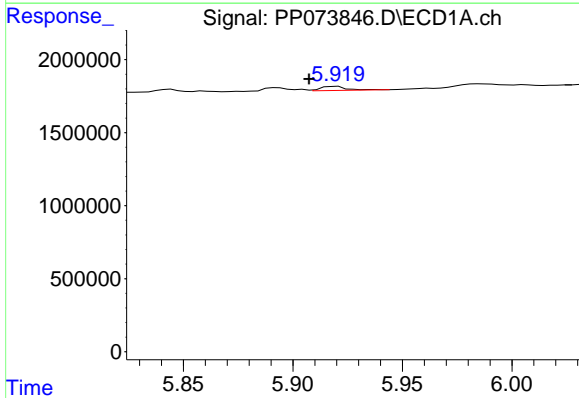
R.T.: 5.637 min
 Delta R.T.: 0.000 min
 Response: 169009
 Conc: 5.47 ng/ml

Instrument :
 ECD_P
 ClientSampleId :
 PB168851BL



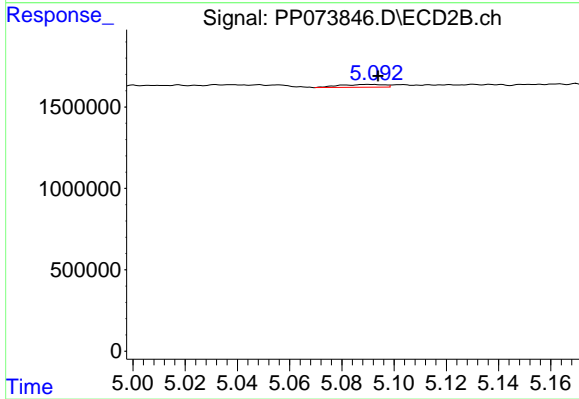
#21 AR-1248-1

R.T.: 4.860 min
 Delta R.T.: 0.002 min
 Response: 222955
 Conc: 4.97 ng/ml



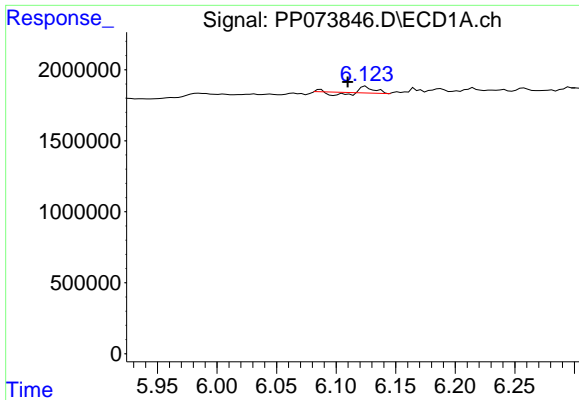
#22 AR-1248-2

R.T.: 5.920 min
 Delta R.T.: 0.012 min
 Response: 226739
 Conc: 5.68 ng/ml



#22 AR-1248-2

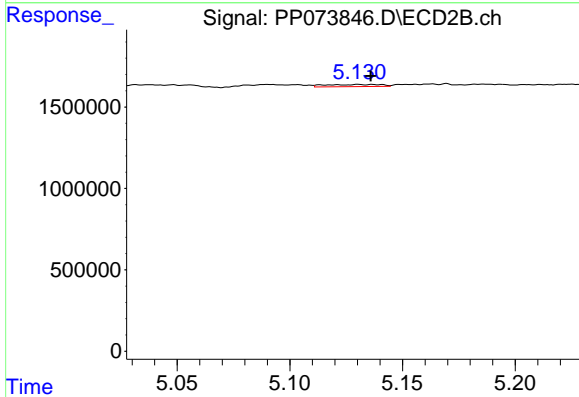
R.T.: 5.091 min
 Delta R.T.: -0.003 min
 Response: 207285
 Conc: 3.37 ng/ml



#23 AR-1248-3

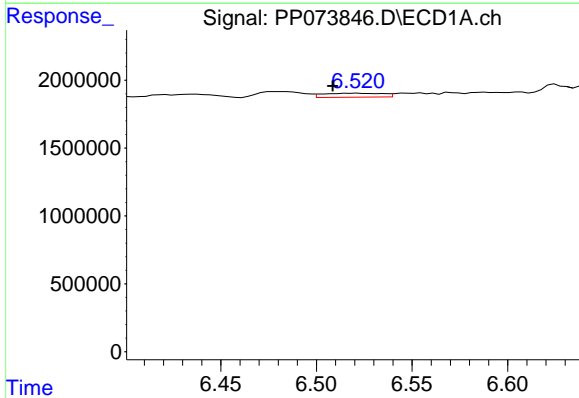
R.T.: 6.125 min
 Delta R.T.: 0.015 min
 Response: 166765
 Conc: 3.76 ng/ml

Instrument :
 ECD_P
 ClientSampleId :
 PB168851BL



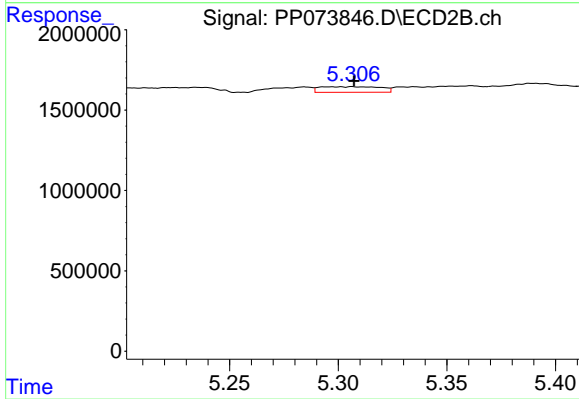
#23 AR-1248-3

R.T.: 5.130 min
 Delta R.T.: -0.005 min
 Response: 216320
 Conc: 3.38 ng/ml



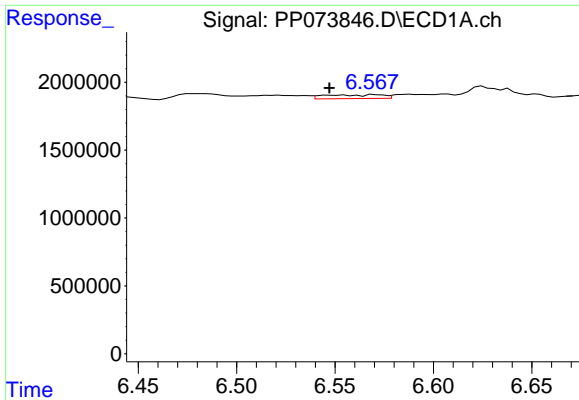
#24 AR-1248-4

R.T.: 6.521 min
 Delta R.T.: 0.013 min
 Response: 636225
 Conc: 11.55 ng/ml



#24 AR-1248-4

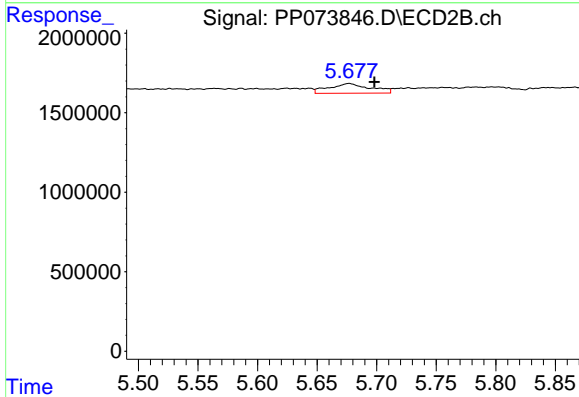
R.T.: 5.306 min
 Delta R.T.: 0.000 min
 Response: 668876
 Conc: 8.87 ng/ml



#25 AR-1248-5

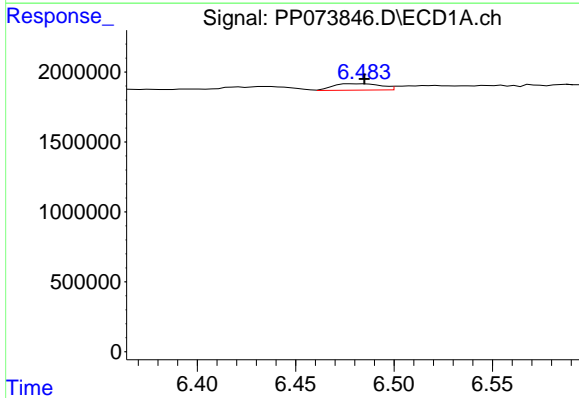
R.T.: 6.547 min
 Delta R.T.: 0.000 min
 Response: 579321
 Conc: 10.77 ng/ml

Instrument :
 ECD_P
 ClientSampleId :
 PB168851BL



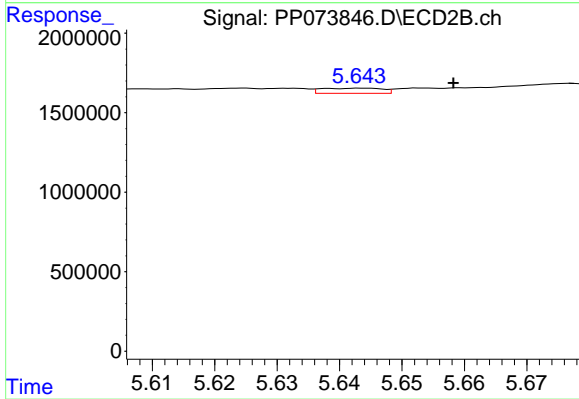
#25 AR-1248-5

R.T.: 5.677 min
 Delta R.T.: -0.021 min
 Response: 1471417
 Conc: 19.73 ng/ml



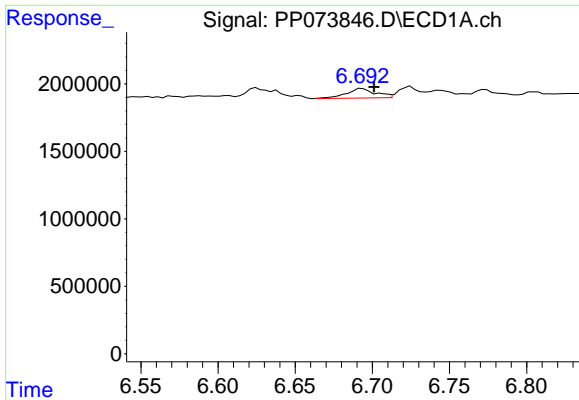
#26 AR-1254-1

R.T.: 6.484 min
 Delta R.T.: 0.000 min
 Response: 777838
 Conc: 14.51 ng/ml



#26 AR-1254-1

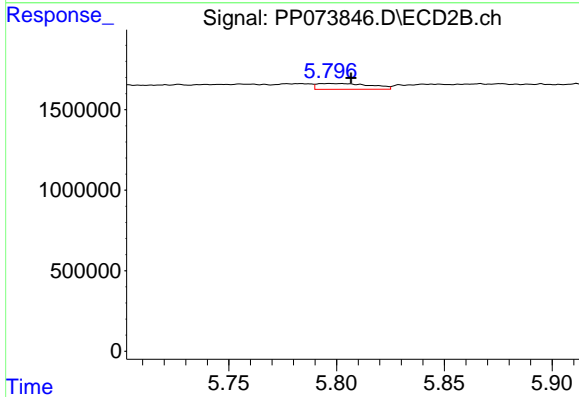
R.T.: 5.644 min
 Delta R.T.: -0.014 min
 Response: 219546
 Conc: 1.89 ng/ml



#27 AR-1254-2

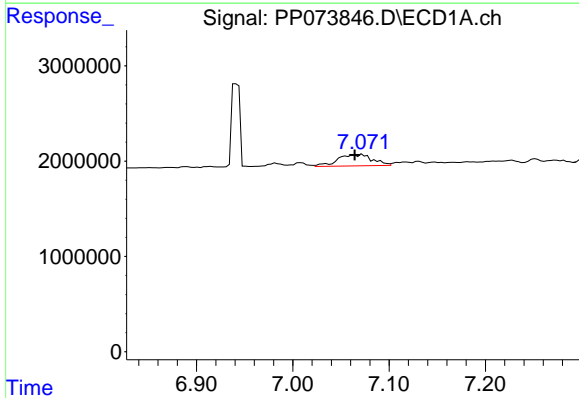
R.T.: 6.694 min
 Delta R.T.: -0.008 min
 Response: 920651
 Conc: 11.05 ng/ml

Instrument :
 ECD_P
 ClientSampleId :
 PB168851BL



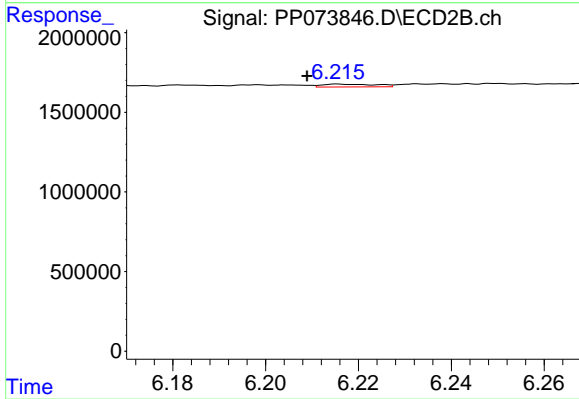
#27 AR-1254-2

R.T.: 5.797 min
 Delta R.T.: -0.010 min
 Response: 614940
 Conc: 6.11 ng/ml



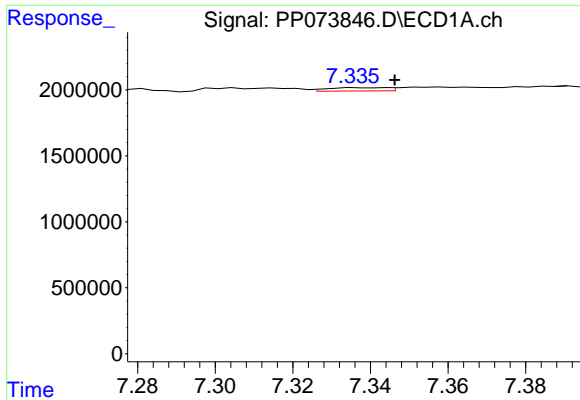
#28 AR-1254-3

R.T.: 7.064 min
 Delta R.T.: 0.000 min
 Response: 2950248
 Conc: 33.40 ng/ml



#28 AR-1254-3

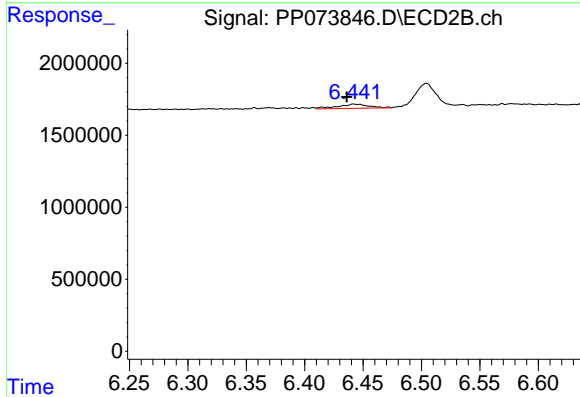
R.T.: 6.216 min
 Delta R.T.: 0.007 min
 Response: 138710
 Conc: 0.90 ng/ml



#29 AR-1254-4

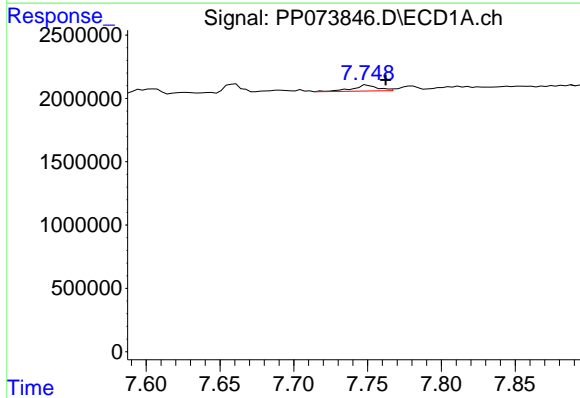
R.T.: 7.337 min
 Delta R.T.: -0.009 min
 Response: 262928
 Conc: 3.34 ng/ml

Instrument :
 ECD_P
 ClientSampleId :
 PB168851BL



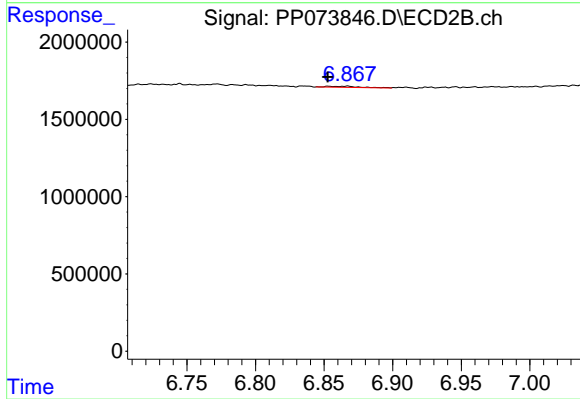
#29 AR-1254-4

R.T.: 6.442 min
 Delta R.T.: 0.006 min
 Response: 527996
 Conc: 5.58 ng/ml



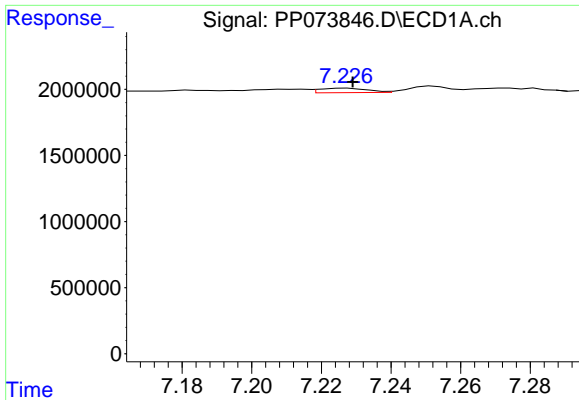
#30 AR-1254-5

R.T.: 7.750 min
 Delta R.T.: -0.013 min
 Response: 562639
 Conc: 7.64 ng/ml



#30 AR-1254-5

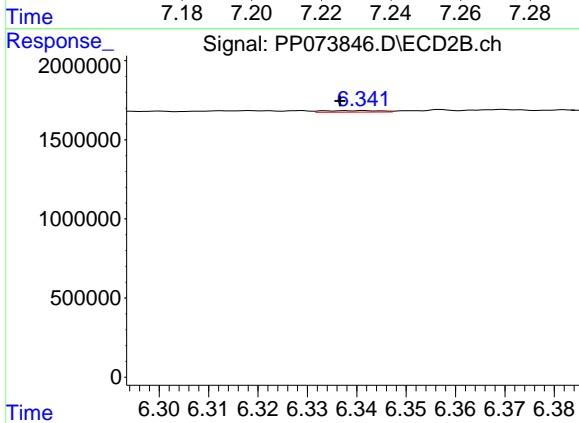
R.T.: 6.867 min
 Delta R.T.: 0.015 min
 Response: 128940
 Conc: 0.97 ng/ml



#31 AR-1260-1

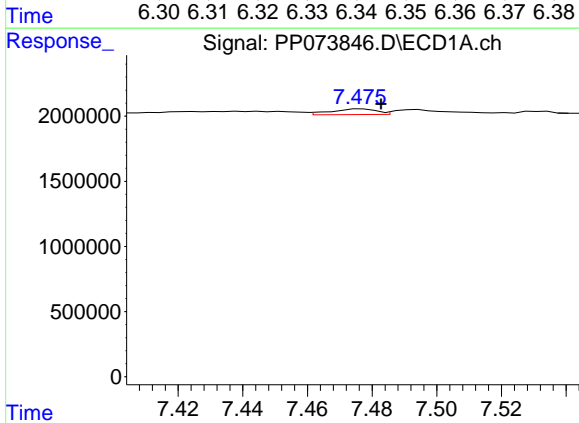
R.T.: 7.227 min
 Delta R.T.: -0.002 min
 Response: 325503
 Conc: 5.52 ng/ml

Instrument :
 ECD_P
 ClientSampleId :
 PB168851BL



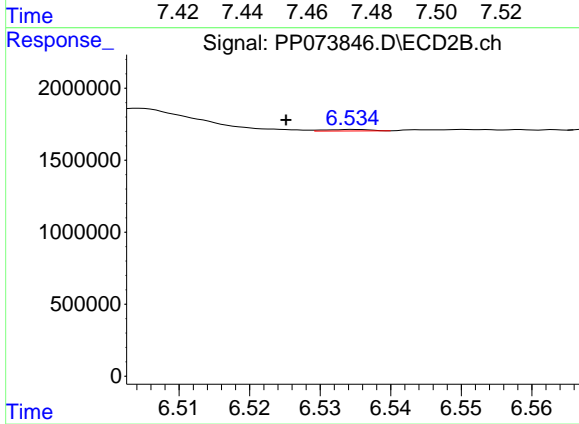
#31 AR-1260-1

R.T.: 6.341 min
 Delta R.T.: 0.005 min
 Response: 77095
 Conc: 0.79 ng/ml



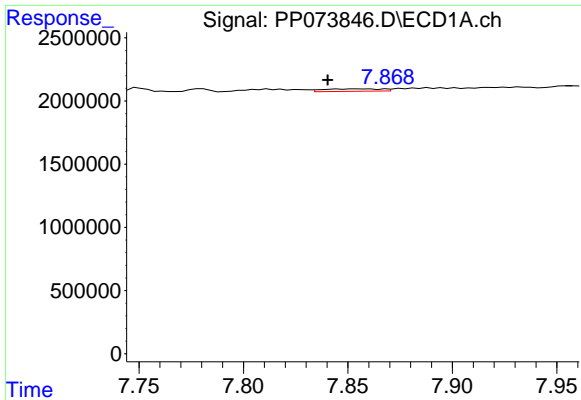
#32 AR-1260-2

R.T.: 7.477 min
 Delta R.T.: -0.006 min
 Response: 431109
 Conc: 4.50 ng/ml



#32 AR-1260-2

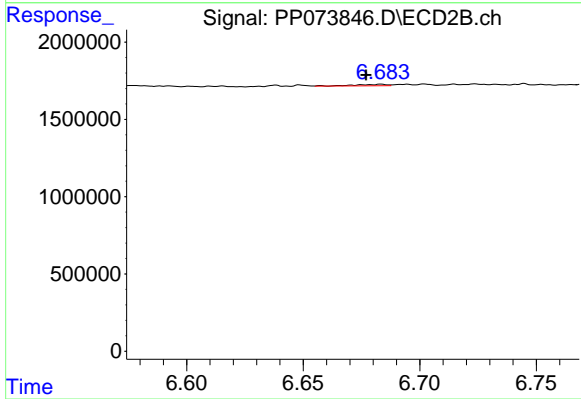
R.T.: 6.535 min
 Delta R.T.: 0.010 min
 Response: 45529
 Conc: 0.37 ng/ml



#33 AR-1260-3

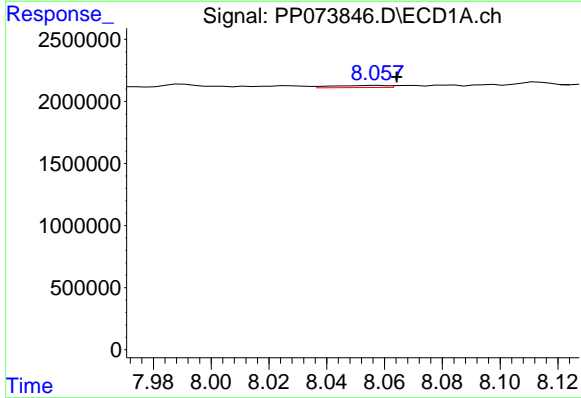
R.T.: 7.854 min
 Delta R.T.: 0.014 min
 Response: 380431
 Conc: 5.21 ng/ml

Instrument :
 ECD_P
 ClientSampleId :
 PB168851BL



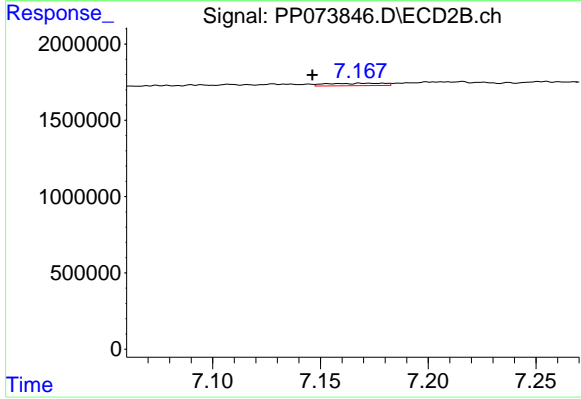
#33 AR-1260-3

R.T.: 6.684 min
 Delta R.T.: 0.007 min
 Response: 90012
 Conc: 0.82 ng/ml



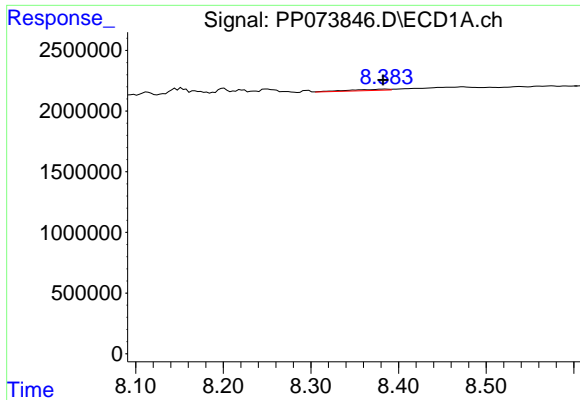
#34 AR-1260-4

R.T.: 8.057 min
 Delta R.T.: -0.007 min
 Response: 229453
 Conc: 3.51 ng/ml



#34 AR-1260-4

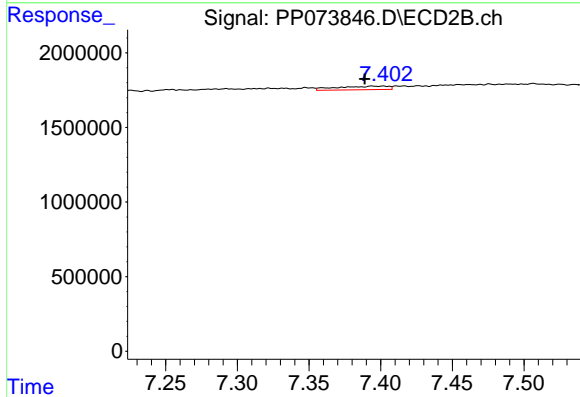
R.T.: 7.160 min
 Delta R.T.: 0.013 min
 Response: 297220
 Conc: 3.32 ng/ml



#35 AR-1260-5

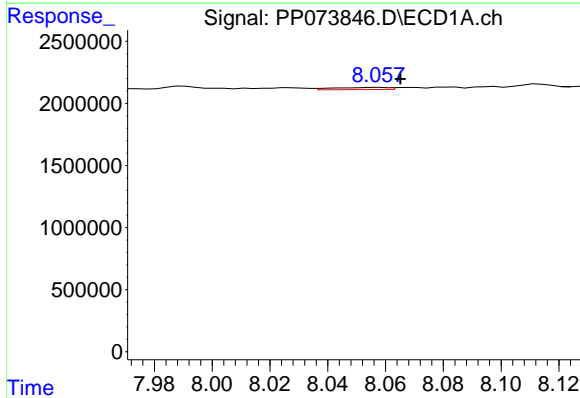
R.T.: 8.384 min
 Delta R.T.: 0.002 min
 Response: 311456
 Conc: 2.06 ng/ml

Instrument :
 ECD_P
 ClientSampleId :
 PB168851BL



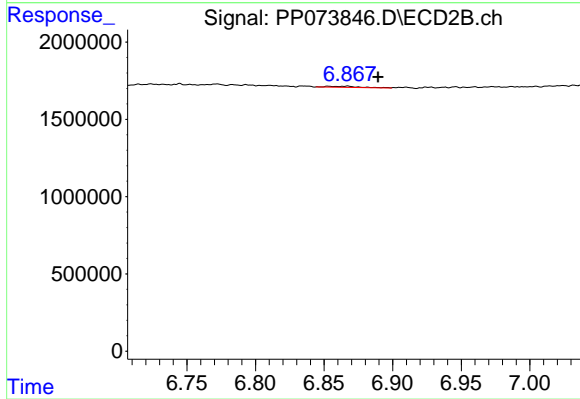
#35 AR-1260-5

R.T.: 7.402 min
 Delta R.T.: 0.013 min
 Response: 600943
 Conc: 2.67 ng/ml



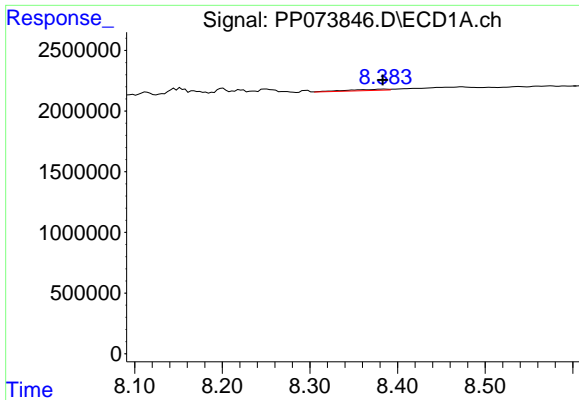
#36 AR-1262-1

R.T.: 8.057 min
 Delta R.T.: -0.008 min
 Response: 229453
 Conc: 2.64 ng/ml



#36 AR-1262-1

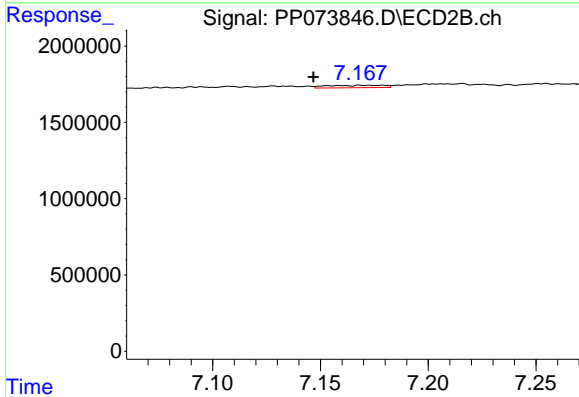
R.T.: 6.867 min
 Delta R.T.: -0.022 min
 Response: 128940
 Conc: 0.87 ng/ml



#37 AR-1262-2

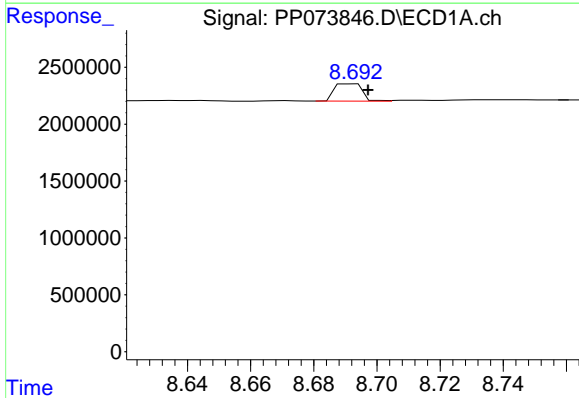
R.T.: 8.384 min
 Delta R.T.: 0.001 min
 Response: 311456
 Conc: 1.57 ng/ml

Instrument :
 ECD_P
 ClientSampleId :
 PB168851BL



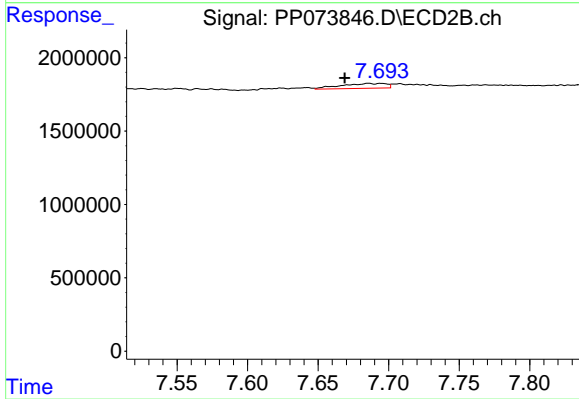
#37 AR-1262-2

R.T.: 7.160 min
 Delta R.T.: 0.013 min
 Response: 297220
 Conc: 2.33 ng/ml



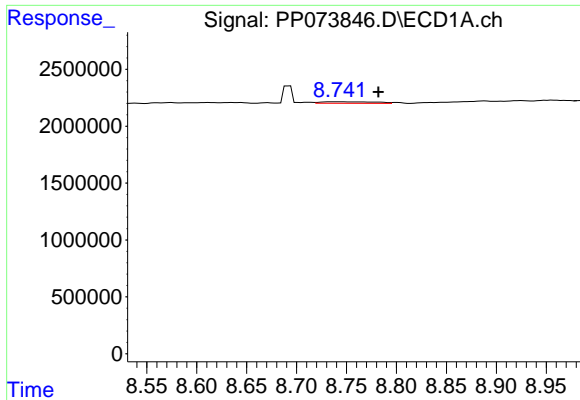
#38 AR-1262-3

R.T.: 8.692 min
 Delta R.T.: -0.005 min
 Response: 939669
 Conc: 7.47 ng/ml



#38 AR-1262-3

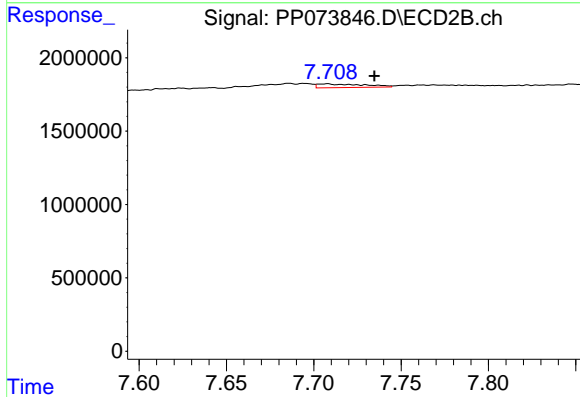
R.T.: 7.686 min
 Delta R.T.: 0.017 min
 Response: 755504
 Conc: 6.63 ng/ml



#39 AR-1262-4

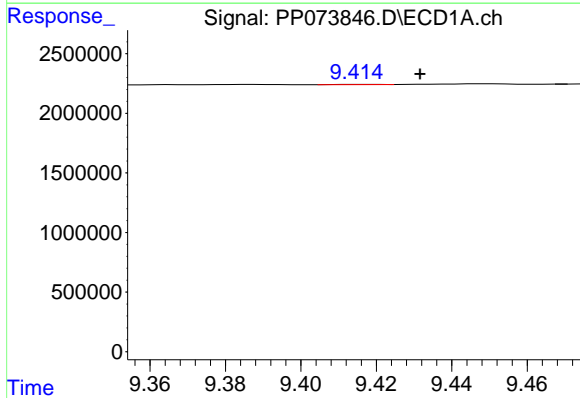
R.T.: 8.743 min
 Delta R.T.: -0.039 min
 Response: 499722
 Conc: 5.36 ng/ml

Instrument :
 ECD_P
 ClientSampleId :
 PB168851BL



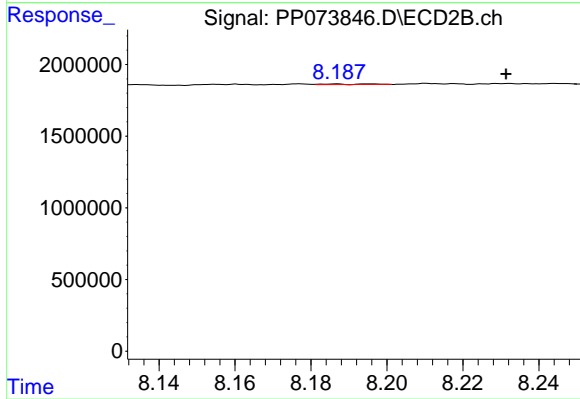
#39 AR-1262-4

R.T.: 7.708 min
 Delta R.T.: -0.027 min
 Response: 469332
 Conc: 2.55 ng/ml



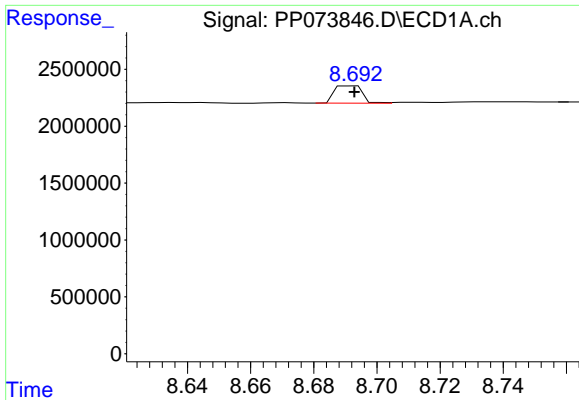
#40 AR-1262-5

R.T.: 9.416 min
 Delta R.T.: -0.015 min
 Response: 19561
 Conc: 0.31 ng/ml



#40 AR-1262-5

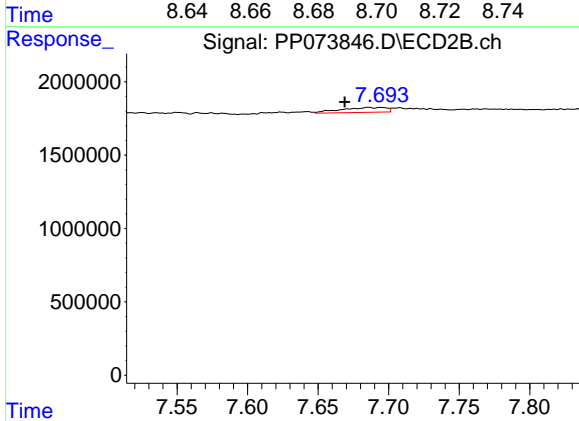
R.T.: 8.186 min
 Delta R.T.: -0.045 min
 Response: 57578
 Conc: 0.68 ng/ml



#41 AR-1268-1

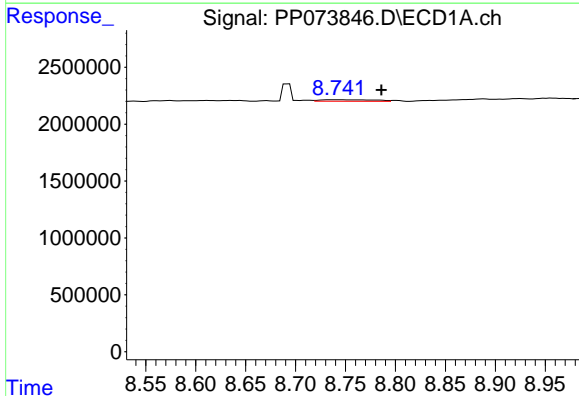
R.T.: 8.692 min
 Delta R.T.: 0.000 min
 Response: 939669
 Conc: 4.21 ng/ml

Instrument :
 ECD_P
 ClientSampleId :
 PB168851BL



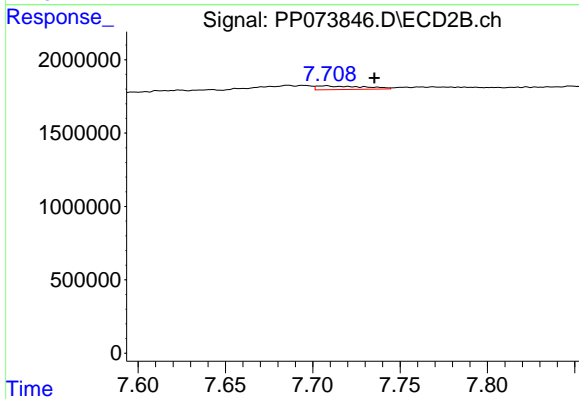
#41 AR-1268-1

R.T.: 7.686 min
 Delta R.T.: 0.017 min
 Response: 755504
 Conc: 2.46 ng/ml



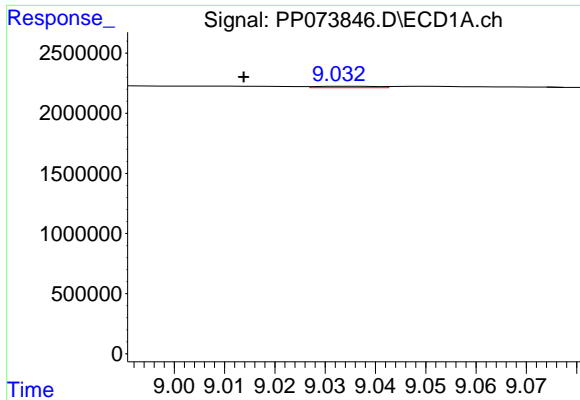
#42 AR-1268-2

R.T.: 8.743 min
 Delta R.T.: -0.043 min
 Response: 499722
 Conc: 2.62 ng/ml



#42 AR-1268-2

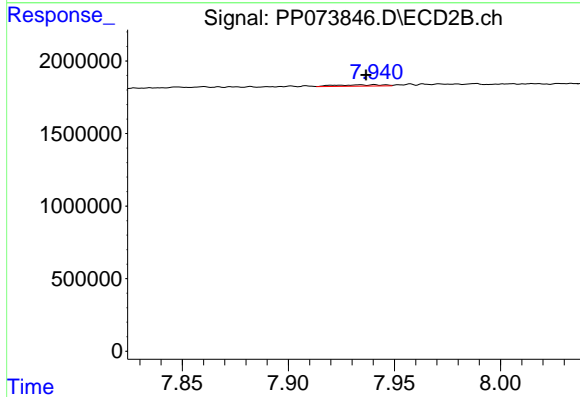
R.T.: 7.708 min
 Delta R.T.: -0.028 min
 Response: 469332
 Conc: 1.77 ng/ml



#43 AR-1268-3

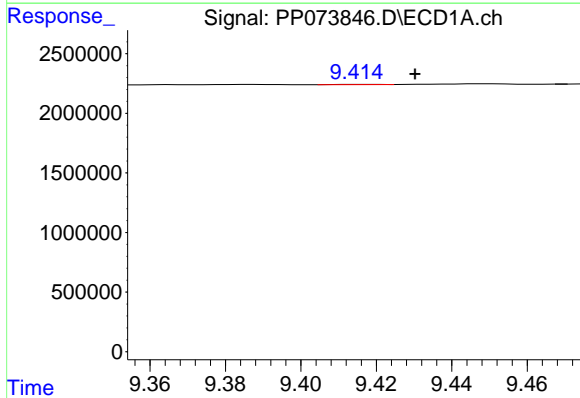
R.T.: 9.035 min
 Delta R.T.: 0.021 min
 Response: 99701
 Conc: 0.60 ng/ml

Instrument :
 ECD_P
 ClientSampleId :
 PB168851BL



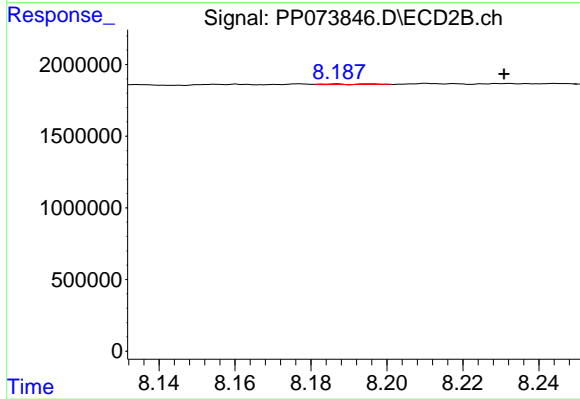
#43 AR-1268-3

R.T.: 7.934 min
 Delta R.T.: -0.003 min
 Response: 147715
 Conc: 0.65 ng/ml



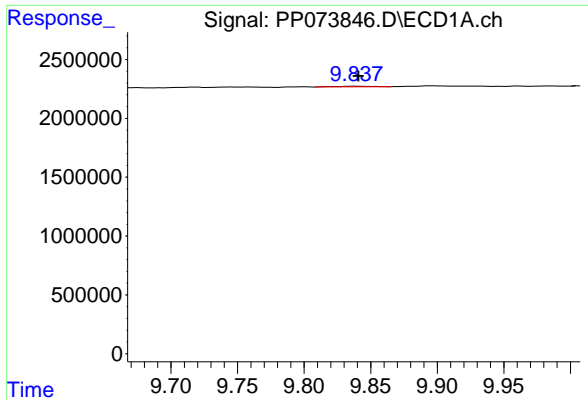
#44 AR-1268-4

R.T.: 9.416 min
 Delta R.T.: -0.014 min
 Response: 19561
 Conc: 0.28 ng/ml



#44 AR-1268-4

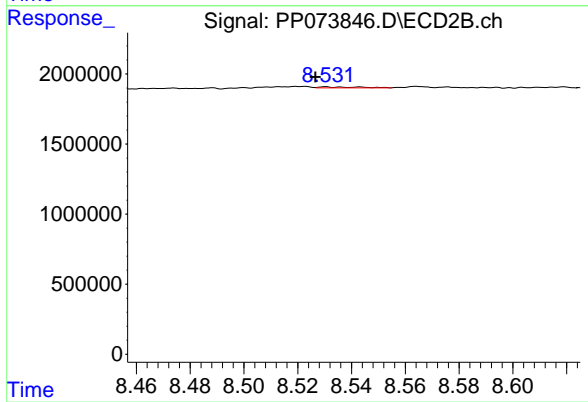
R.T.: 8.186 min
 Delta R.T.: -0.045 min
 Response: 57578
 Conc: 0.62 ng/ml



#45 AR-1268-5

R.T.: 9.839 min
Delta R.T.: -0.002 min
Response: 100377
Conc: 0.22 ng/ml

Instrument :
ECD_P
ClientSampleId :
PB168851BL



#45 AR-1268-5

R.T.: 8.530 min
Delta R.T.: 0.004 min
Response: 75364
Conc: 0.12 ng/ml