

Data Path : Z:\pestpcbsrv\HPCHEM1\ECD_P\Data\PP071625\
 Data File : PP073848.D
 Signal(s) : Signal #1: ECD1A.ch Signal #2: ECD2B.ch
 Acq On : 16 Jul 2025 11:23
 Operator : YP\AJ
 Sample : Q2597-01DL 20X
 Misc :
 ALS Vial : 10 Sample Multiplier: 1

Instrument :
 ECD_P
 ClientSampleId :
 CHRT-26899DL

Integration File signal 1: autoint1.e
 Integration File signal 2: autoint2.e
 Quant Time: Jul 16 11:46:42 2025
 Quant Method : Z:\pestpcbsrv\HPCHEM1\ECD_P\methods\PP070825.M
 Quant Title : GC EXTRACTABLES
 QLast Update : Tue Jul 08 08:35:32 2025
 Response via : Initial Calibration
 Integrator: ChemStation

Volume Inj. : 2 µl
 Signal #1 Phase : ZB-MR1 Signal #2 Phase: ZB-MR2
 Signal #1 Info : 30Mx0.32mmx 0.50µ Signal #2 Info : 30M x 0.32mm x 0.25µm

Compound	RT#1	RT#2	Resp#1	Resp#2	ng/ml	ng/ml
System Monitoring Compounds						
1) SA Tetrachlo...	4.485	3.776	1110535	1556695	0.811	0.845
2) SA Decachlor...	10.168	8.774	872916	1330084	0.800	1.005 #
Target Compounds						
3) L1 AR-1016-1	5.623	4.854	344236	250049	7.245	3.668 #
4) L1 AR-1016-2	5.665	4.879	133013	75200	1.868	0.738 #
5) L1 AR-1016-3	5.727	5.052	315319	184143	7.222	3.403 #
6) L1 AR-1016-4	5.814	5.089	98496	10982639	2.740	250.283 #
7) L1 AR-1016-5	6.107	5.303	3765772	7266325	120.195	133.126
8) L2 AR-1221-1	4.680	3.998	140887	38952	7.886	1.440 #
9) L2 AR-1221-2	4.799	4.072	163649	62437	12.118	3.067 #
10) L2 AR-1221-3	4.850	4.153	207838	27858	4.996	0.453 #
11) L3 AR-1232-1	4.850	4.153	207838	27858	6.366	0.598 #
12) L3 AR-1232-2	5.377	4.879	96486	75200	5.936	1.578 #
13) L3 AR-1232-3	5.665	5.052	133013	184143	4.031	7.357 #
14) L3 AR-1232-4	5.814	5.130	98496	3165112	5.989	146.152 #
15) L3 AR-1232-5	5.905	5.303	6225964	7266325	589.002	322.040 #
16) L4 AR-1242-1	5.623	4.854	344236	250049	9.014	4.329 #
17) L4 AR-1242-2	5.665	4.879	133013	75200	2.221	0.870 #
18) L4 AR-1242-3	5.727	5.052	315319	184143	8.610	4.008 #
19) L4 AR-1242-4	5.814	5.130	98496	3165112	3.065	71.506 #
20) L4 AR-1242-5	6.549	5.653	5552396	37771178	169.607	683.734 #
21) L5 AR-1248-1	5.623	4.854	344236	250049	11.151	5.570 #
22) L5 AR-1248-2	5.905	5.089	6225964	10982639	155.948	178.473
23) L5 AR-1248-3	6.107	5.130	3765772	3165112	84.796	49.405 #
24) L5 AR-1248-4	6.505	5.303	7505714	7266325	136.268	96.399 #
25) L5 AR-1248-5	6.549	5.694	5552396	4387470	103.222	58.820 #
26) L6 AR-1254-1	6.483	5.653	17568221	37771178	327.829	325.529
27) L6 AR-1254-2	6.698	5.801	31209794	41579583	374.717	413.219
28) L6 AR-1254-3	7.061	6.203	39983914	72721773	452.657	470.854
29) L6 AR-1254-4	7.343	6.431	37449862	50547898	476.055	534.564
30) L6 AR-1254-5	7.759	6.846	42300920	81202545	574.118	608.510
31) L7 AR-1260-1	7.225	6.332	18444989	38497828	312.832	394.605 #
32) L7 AR-1260-2	7.478	6.521	25483673	36224024	265.898	294.894
33) L7 AR-1260-3	7.822	6.671	5755104	34522112	78.761	315.375 #
34) L7 AR-1260-4	8.046	7.141	16897895	5503657	258.774	61.556 #
35) L7 AR-1260-5	8.377	7.383	8879163	14222302	58.860	63.284
36) L8 AR-1262-1	8.046	6.916	16897895	6475677	194.168	43.846 #
37) L8 AR-1262-2	8.377	7.141	8879163	5503657	44.838	43.055
38) L8 AR-1262-3	8.702	7.663	6775881	1687748	53.894	14.802 #
39) L8 AR-1262-4	8.753	7.726	2410109	13583852	25.842	73.806 #
40) L8 AR-1262-5	9.424	8.224	1347964	1460968	21.265	17.303
41) L9 AR-1268-1	8.702	7.663	6775881	1687748	30.355	5.491 #

Data Path : Z:\pestpcbsrv\HPCHEM1\ECD_P\Data\PP071625\
 Data File : PP073848.D
 Signal(s) : Signal #1: ECD1A.ch Signal #2: ECD2B.ch
 Acq On : 16 Jul 2025 11:23
 Operator : YP\AJ
 Sample : Q2597-01DL 20X
 Misc :
 ALS Vial : 10 Sample Multiplier: 1

Instrument :
 ECD_P
ClientSampleId :
 CHRT-26899DL

Integration File signal 1: autoint1.e
 Integration File signal 2: autoint2.e
 Quant Time: Jul 16 11:46:42 2025
 Quant Method : Z:\pestpcbsrv\HPCHEM1\ECD_P\methods\PP070825.M
 Quant Title : GC EXTRACTABLES
 QLast Update : Tue Jul 08 08:35:32 2025
 Response via : Initial Calibration
 Integrator: ChemStation

Volume Inj. : 2 µl
 Signal #1 Phase : ZB-MR1 Signal #2 Phase: ZB-MR2
 Signal #1 Info : 30Mx0.32mmx 0.50µ Signal #2 Info : 30M x 0.32mm x 0.25µm

	Compound	RT#1	RT#2	Resp#1	Resp#2	ng/ml	ng/ml
42)	L9 AR-1268-2	8.753	7.726	2410109	13583852	12.651	51.127 #
43)	L9 AR-1268-3	9.005	7.931	409898	304898	2.476	1.352 #
44)	L9 AR-1268-4	9.424	8.224	1347964	1460968	19.383	15.715
45)	L9 AR-1268-5	9.838	8.520	355135	670213	0.770	1.087 #

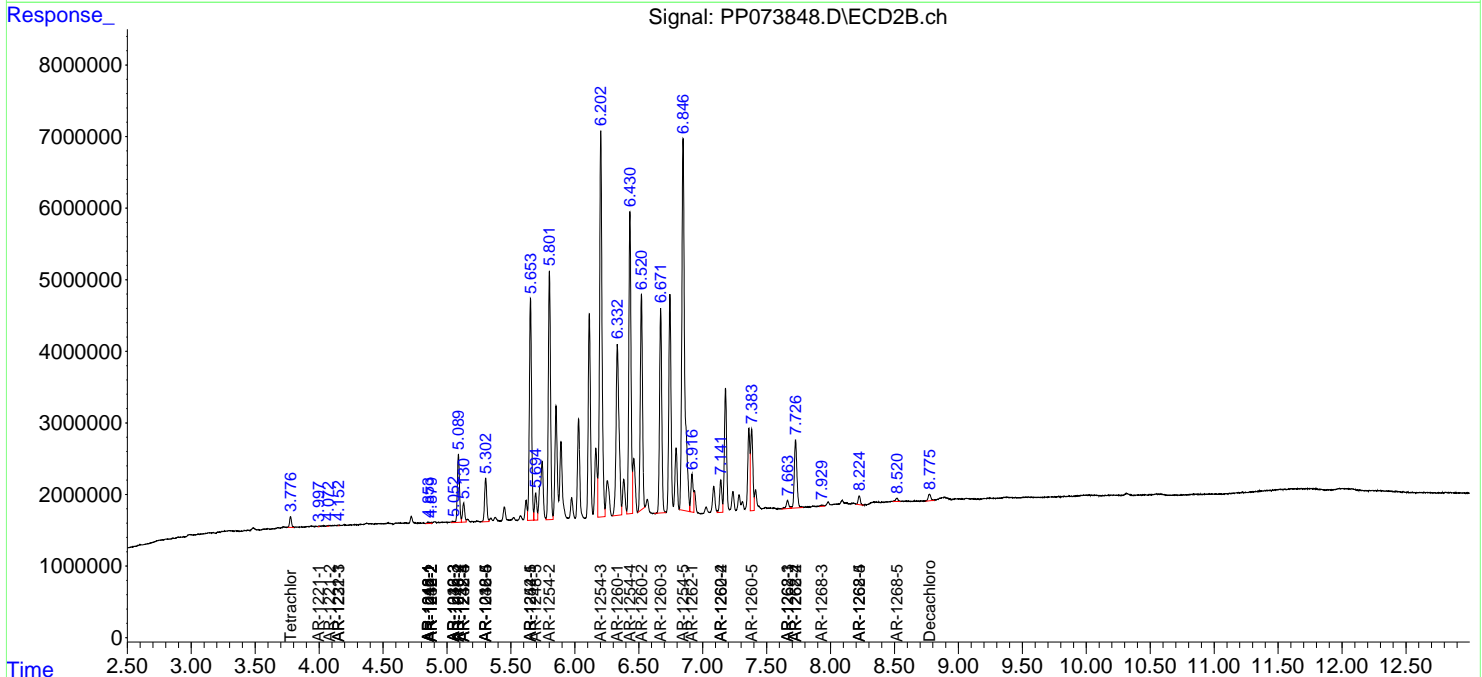
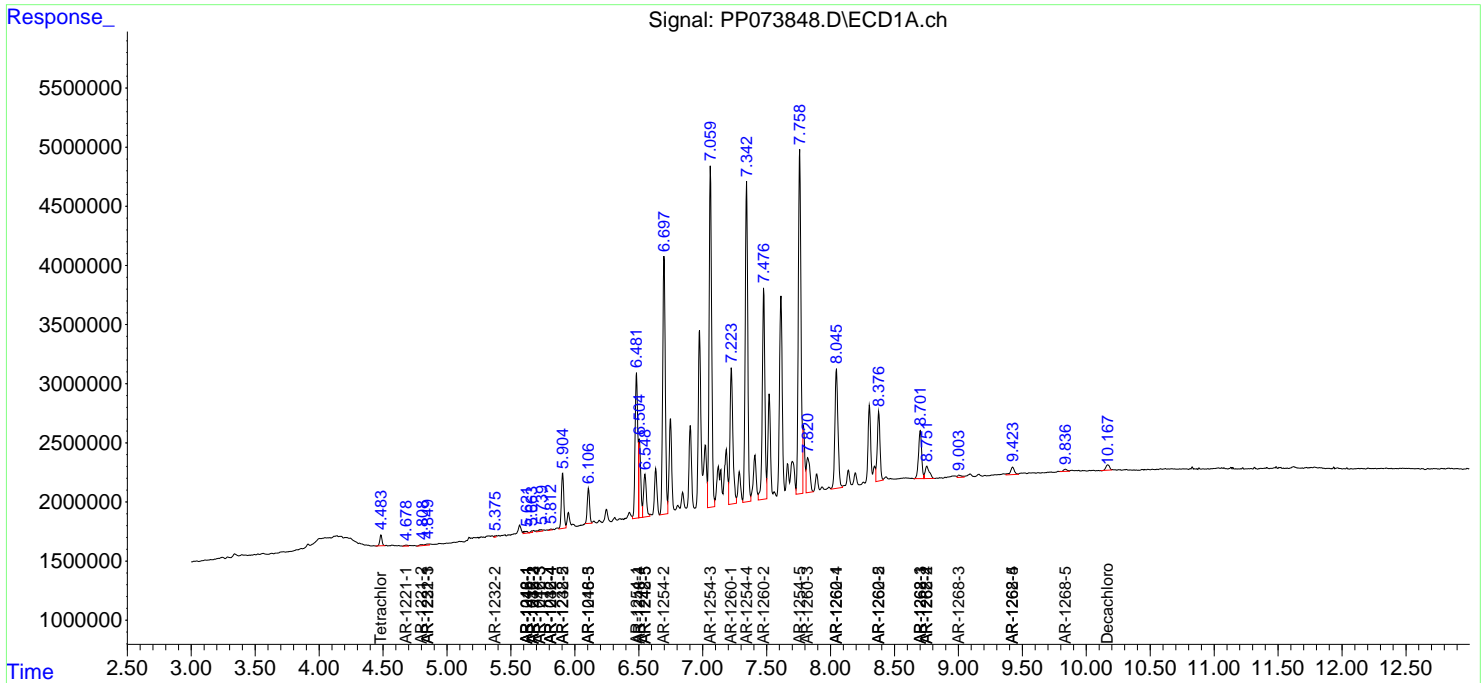
(f)=RT Delta > 1/2 Window (#)=Amounts differ by > 25% (m)=manual int.

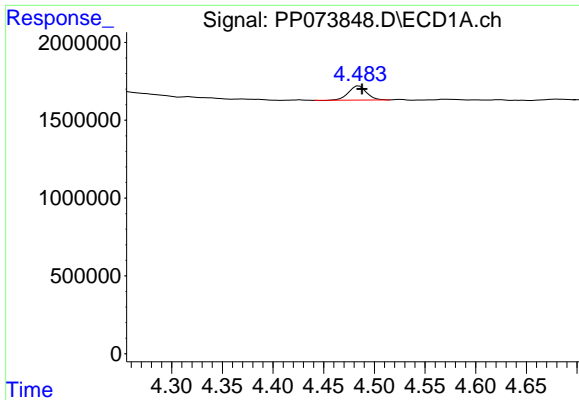
Data Path : Z:\pestpcbsrv\HPCHEM1\ECD_P\Data\PP071625\
 Data File : PP073848.D
 Signal(s) : Signal #1: ECD1A.ch Signal #2: ECD2B.ch
 Acq On : 16 Jul 2025 11:23
 Operator : YP\AJ
 Sample : Q2597-01DL 20X
 Misc :
 ALS Vial : 10 Sample Multiplier: 1

Instrument :
 ECD_P
 ClientSampleId :
 CHRT-26899DL

Integration File signal 1: autoint1.e
 Integration File signal 2: autoint2.e
 Quant Time: Jul 16 11:46:42 2025
 Quant Method : Z:\pestpcbsrv\HPCHEM1\ECD_P\methods\PP070825.M
 Quant Title : GC EXTRACTABLES
 QLast Update : Tue Jul 08 08:35:32 2025
 Response via : Initial Calibration
 Integrator: ChemStation

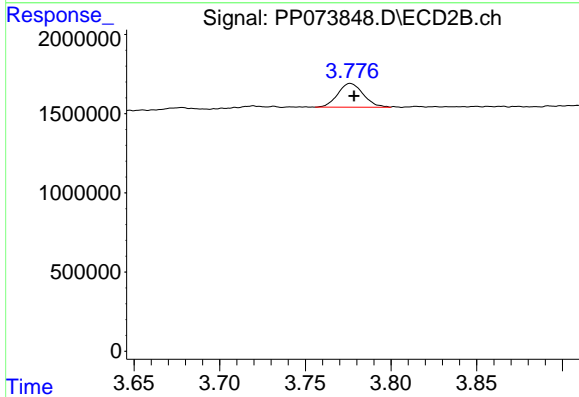
Volume Inj. : 2 µl
 Signal #1 Phase : ZB-MR1 Signal #2 Phase: ZB-MR2
 Signal #1 Info : 30Mx0.32mmx 0.50µ Signal #2 Info : 30M x 0.32mm x 0.25µm



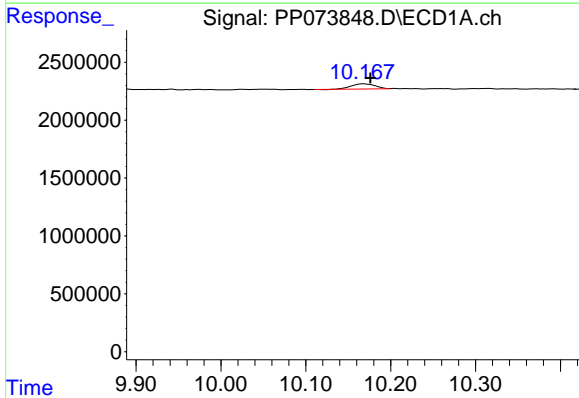


#1 Tetrachloro-m-xylene
 R.T.: 4.485 min
 Delta R.T.: -0.003 min
 Response: 1110535
 Conc: 0.81 ng/ml

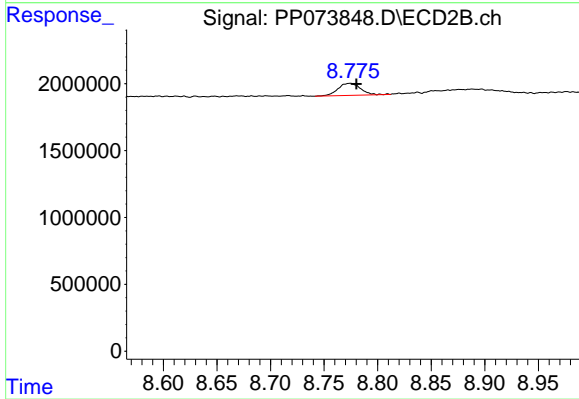
Instrument :
 ECD_P
 ClientSampleId :
 CHRT-26899DL



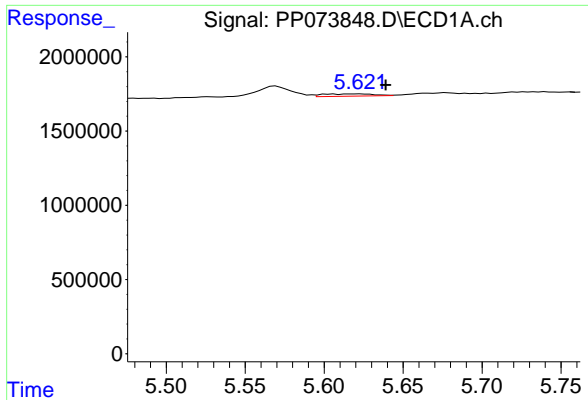
#1 Tetrachloro-m-xylene
 R.T.: 3.776 min
 Delta R.T.: -0.002 min
 Response: 1556695
 Conc: 0.84 ng/ml



#2 Decachlorobiphenyl
 R.T.: 10.168 min
 Delta R.T.: -0.008 min
 Response: 872916
 Conc: 0.80 ng/ml



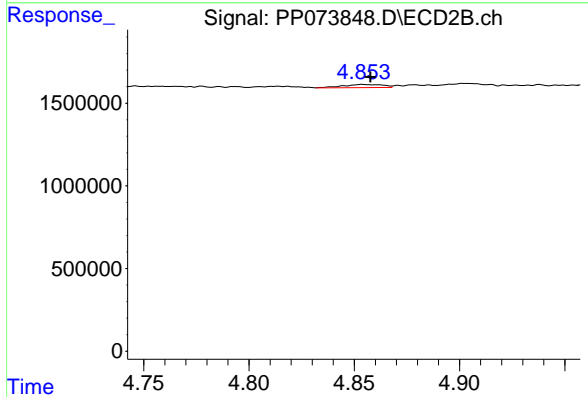
#2 Decachlorobiphenyl
 R.T.: 8.774 min
 Delta R.T.: -0.006 min
 Response: 1330084
 Conc: 1.01 ng/ml



#3 AR-1016-1

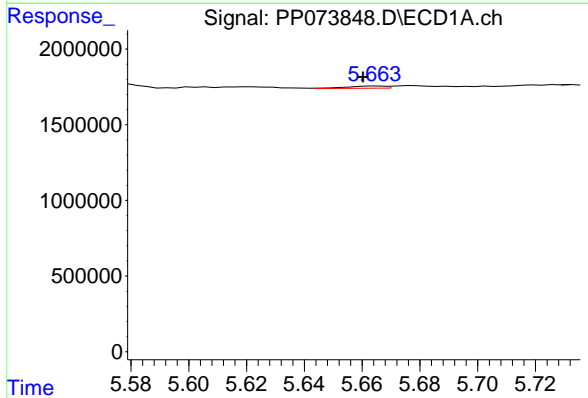
R.T.: 5.623 min
 Delta R.T.: -0.016 min
 Response: 344236
 Conc: 7.24 ng/ml

Instrument :
 ECD_P
 ClientSampleId :
 CHRT-26899DL



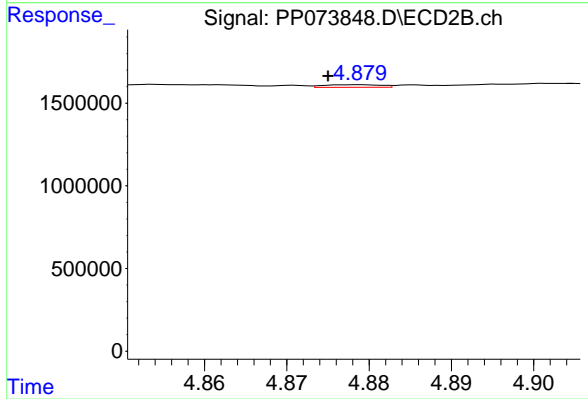
#3 AR-1016-1

R.T.: 4.854 min
 Delta R.T.: -0.004 min
 Response: 250049
 Conc: 3.67 ng/ml



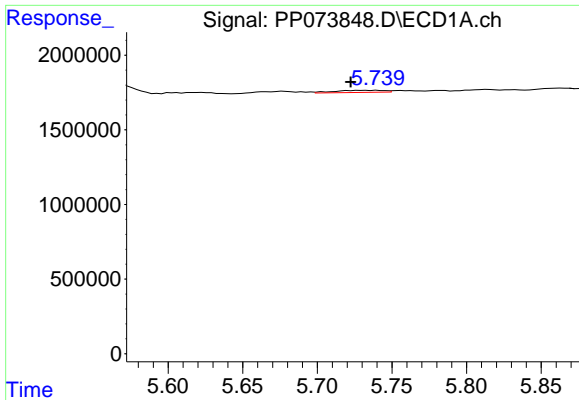
#4 AR-1016-2

R.T.: 5.665 min
 Delta R.T.: 0.005 min
 Response: 133013
 Conc: 1.87 ng/ml



#4 AR-1016-2

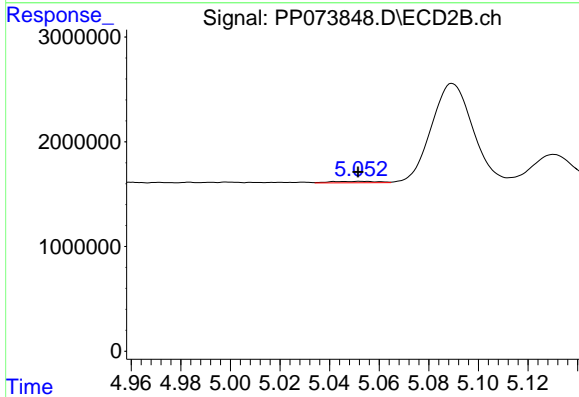
R.T.: 4.879 min
 Delta R.T.: 0.004 min
 Response: 75200
 Conc: 0.74 ng/ml



#5 AR-1016-3

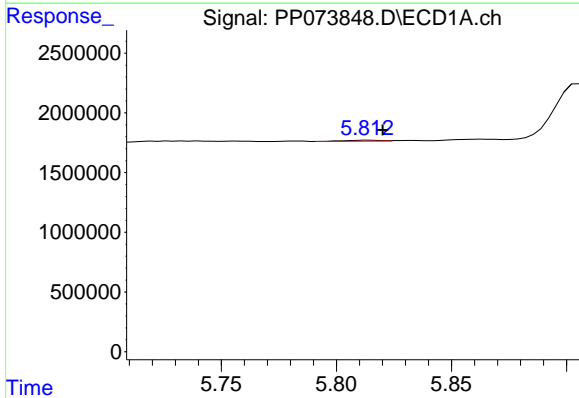
R.T.: 5.727 min
 Delta R.T.: 0.005 min
 Response: 315319
 Conc: 7.22 ng/ml

Instrument :
 ECD_P
 ClientSampleId :
 CHRT-26899DL



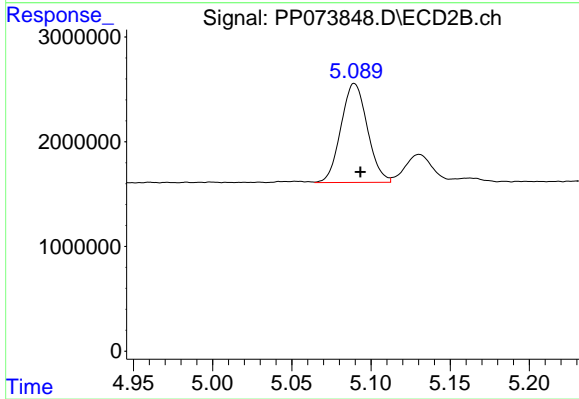
#5 AR-1016-3

R.T.: 5.052 min
 Delta R.T.: 0.000 min
 Response: 184143
 Conc: 3.40 ng/ml



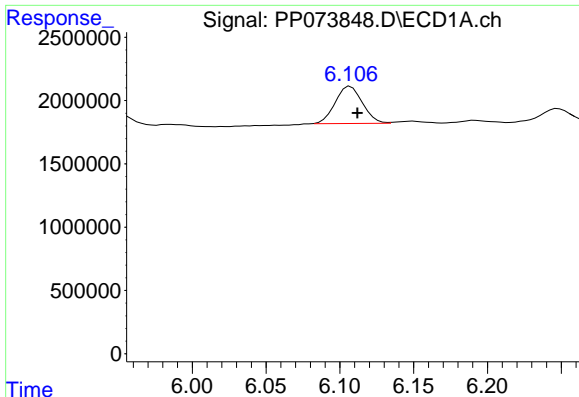
#6 AR-1016-4

R.T.: 5.814 min
 Delta R.T.: -0.006 min
 Response: 98496
 Conc: 2.74 ng/ml



#6 AR-1016-4

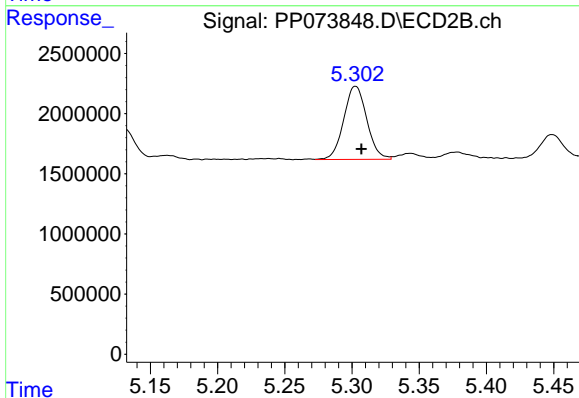
R.T.: 5.089 min
 Delta R.T.: -0.004 min
 Response: 10982639
 Conc: 250.28 ng/ml



#7 AR-1016-5

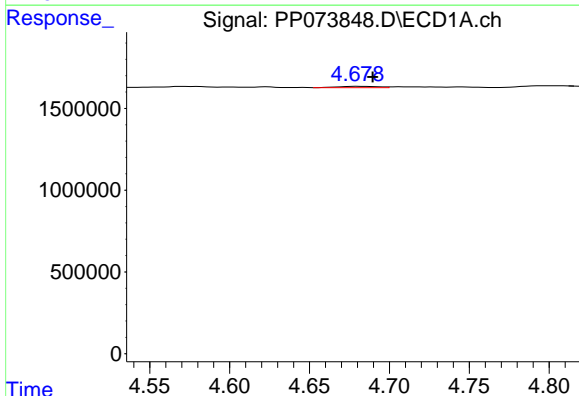
R.T.: 6.107 min
 Delta R.T.: -0.005 min
 Response: 3765772
 Conc: 120.20 ng/ml

Instrument :
 ECD_P
 ClientSampleId :
 CHRT-26899DL



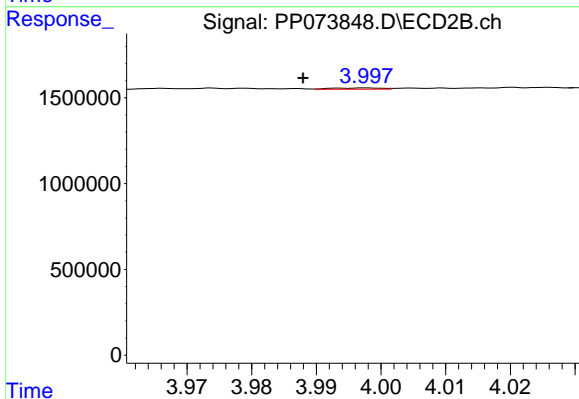
#7 AR-1016-5

R.T.: 5.303 min
 Delta R.T.: -0.004 min
 Response: 7266325
 Conc: 133.13 ng/ml



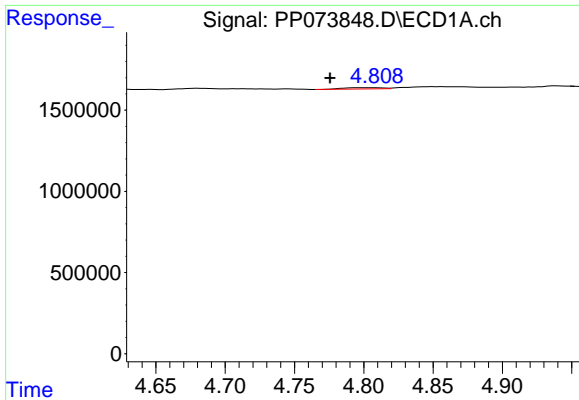
#8 AR-1221-1

R.T.: 4.680 min
 Delta R.T.: -0.010 min
 Response: 140887
 Conc: 7.89 ng/ml



#8 AR-1221-1

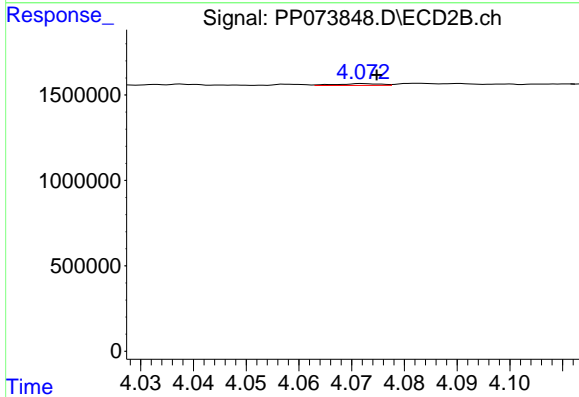
R.T.: 3.998 min
 Delta R.T.: 0.010 min
 Response: 38952
 Conc: 1.44 ng/ml



#9 AR-1221-2

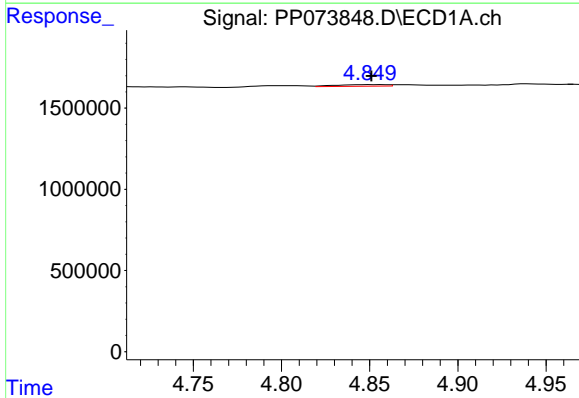
R.T.: 4.799 min
 Delta R.T.: 0.024 min
 Response: 163649
 Conc: 12.12 ng/ml

Instrument :
 ECD_P
 ClientSampleId :
 CHRT-26899DL



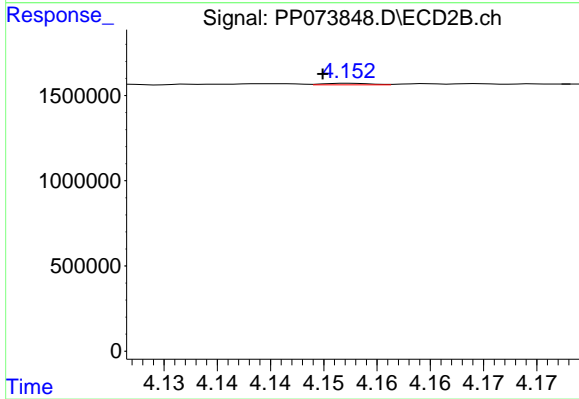
#9 AR-1221-2

R.T.: 4.072 min
 Delta R.T.: -0.003 min
 Response: 62437
 Conc: 3.07 ng/ml



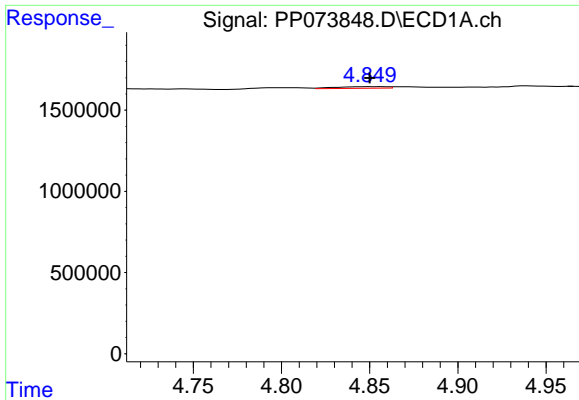
#10 AR-1221-3

R.T.: 4.850 min
 Delta R.T.: -0.001 min
 Response: 207838
 Conc: 5.00 ng/ml



#10 AR-1221-3

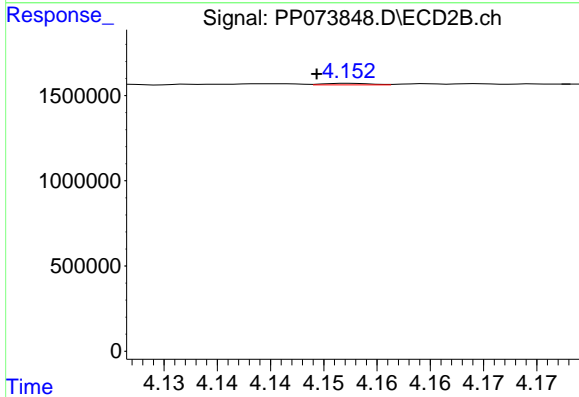
R.T.: 4.153 min
 Delta R.T.: 0.003 min
 Response: 27858
 Conc: 0.45 ng/ml



#11 AR-1232-1

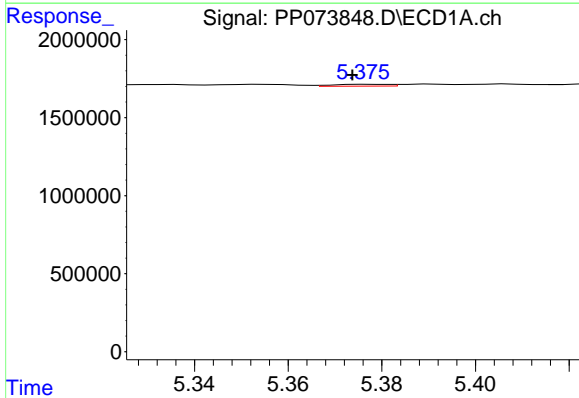
R.T.: 4.850 min
 Delta R.T.: 0.000 min
 Response: 207838
 Conc: 6.37 ng/ml

Instrument :
 ECD_P
 ClientSampleId :
 CHRT-26899DL



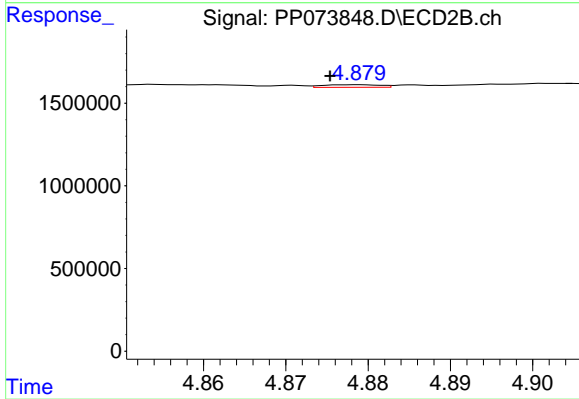
#11 AR-1232-1

R.T.: 4.153 min
 Delta R.T.: 0.003 min
 Response: 27858
 Conc: 0.60 ng/ml



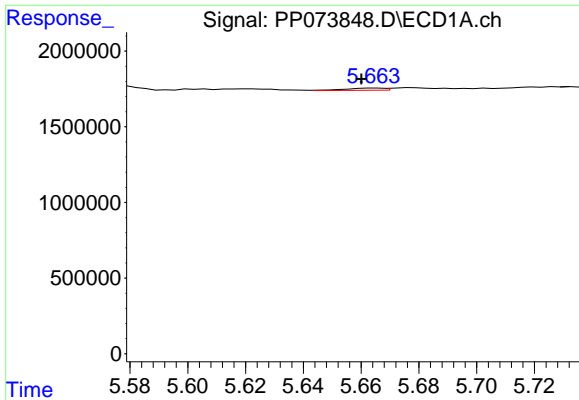
#12 AR-1232-2

R.T.: 5.377 min
 Delta R.T.: 0.003 min
 Response: 96486
 Conc: 5.94 ng/ml



#12 AR-1232-2

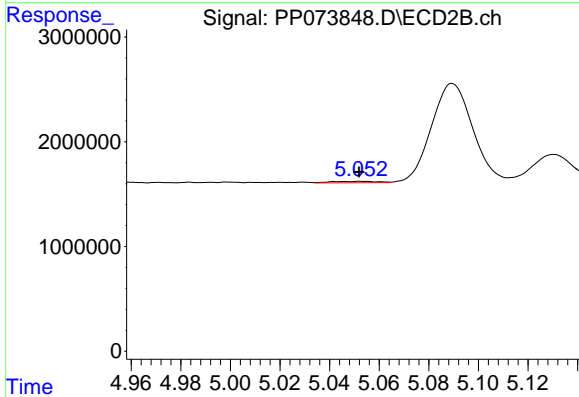
R.T.: 4.879 min
 Delta R.T.: 0.004 min
 Response: 75200
 Conc: 1.58 ng/ml



#13 AR-1232-3

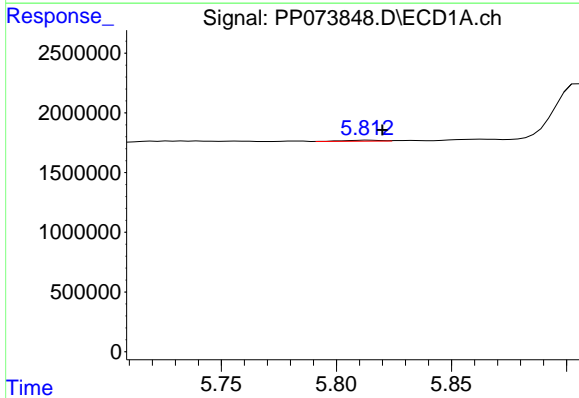
R.T.: 5.665 min
 Delta R.T.: 0.005 min
 Response: 133013
 Conc: 4.03 ng/ml

Instrument :
 ECD_P
 ClientSampleId :
 CHRT-26899DL



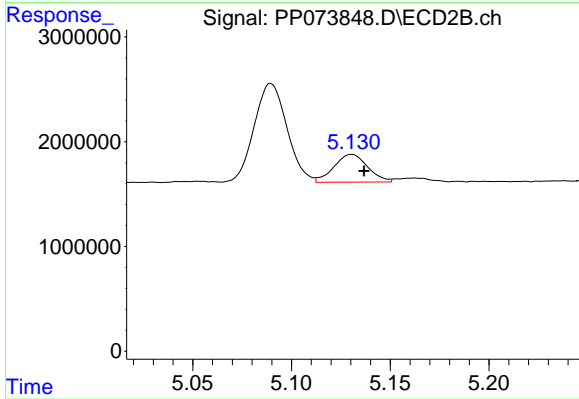
#13 AR-1232-3

R.T.: 5.052 min
 Delta R.T.: 0.000 min
 Response: 184143
 Conc: 7.36 ng/ml



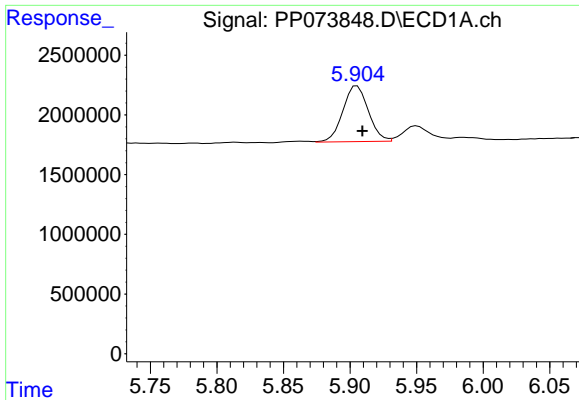
#14 AR-1232-4

R.T.: 5.814 min
 Delta R.T.: -0.006 min
 Response: 98496
 Conc: 5.99 ng/ml



#14 AR-1232-4

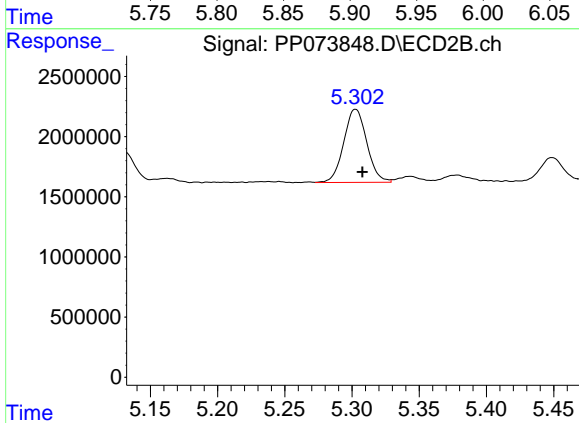
R.T.: 5.130 min
 Delta R.T.: -0.006 min
 Response: 3165112
 Conc: 146.15 ng/ml



#15 AR-1232-5

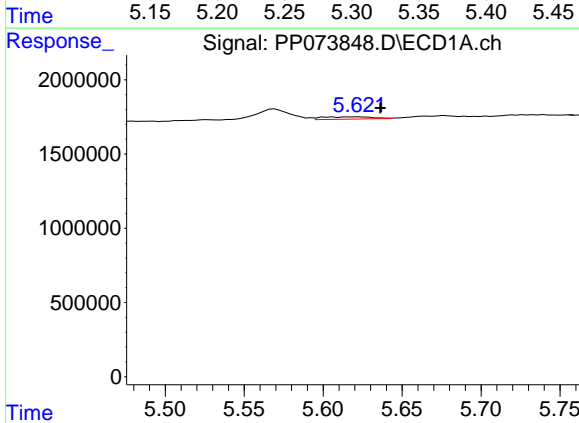
R.T.: 5.905 min
 Delta R.T.: -0.004 min
 Response: 6225964
 Conc: 589.00 ng/ml

Instrument :
 ECD_P
 ClientSampleId :
 CHRT-26899DL



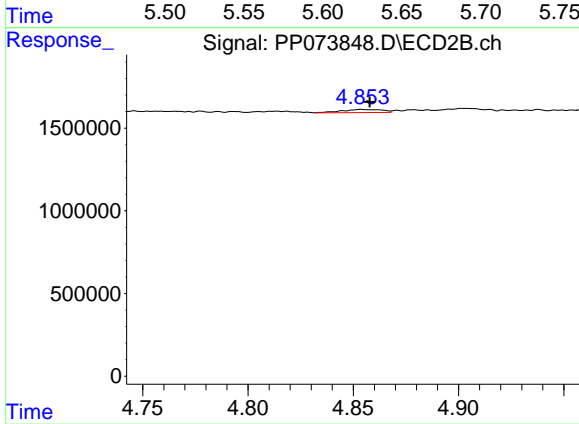
#15 AR-1232-5

R.T.: 5.303 min
 Delta R.T.: -0.005 min
 Response: 7266325
 Conc: 322.04 ng/ml



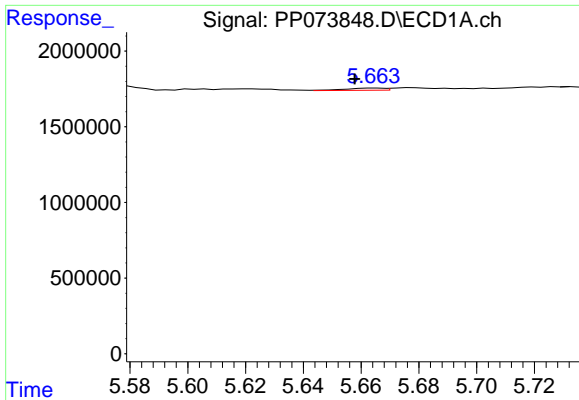
#16 AR-1242-1

R.T.: 5.623 min
 Delta R.T.: -0.014 min
 Response: 344236
 Conc: 9.01 ng/ml



#16 AR-1242-1

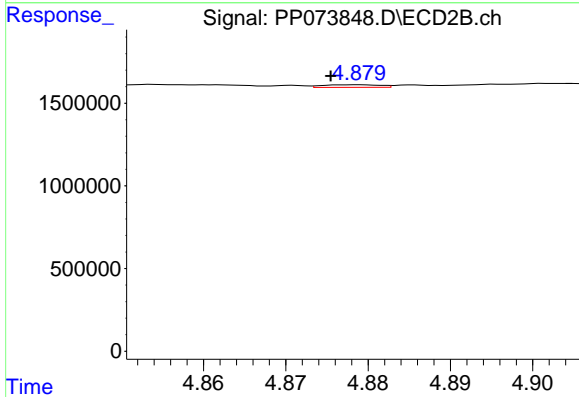
R.T.: 4.854 min
 Delta R.T.: -0.004 min
 Response: 250049
 Conc: 4.33 ng/ml



#17 AR-1242-2

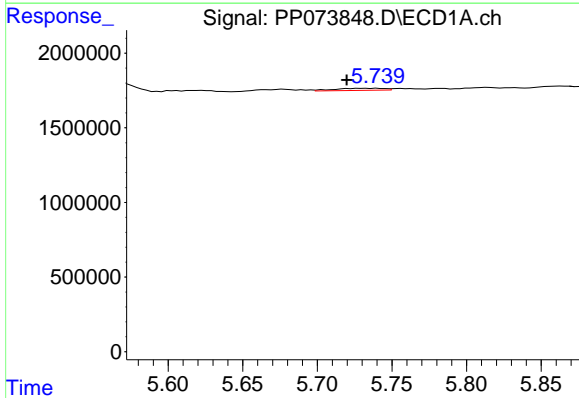
R.T.: 5.665 min
 Delta R.T.: 0.007 min
 Response: 133013
 Conc: 2.22 ng/ml

Instrument :
 ECD_P
 ClientSampleId :
 CHRT-26899DL



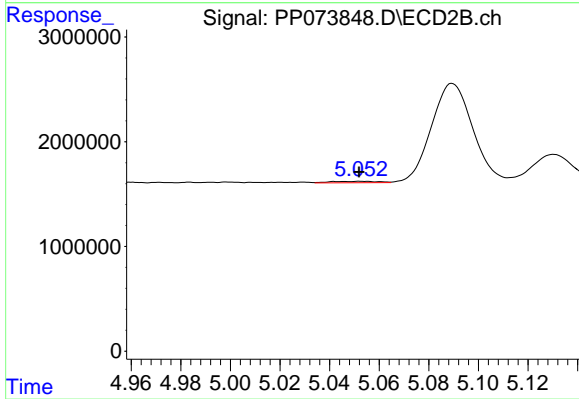
#17 AR-1242-2

R.T.: 4.879 min
 Delta R.T.: 0.003 min
 Response: 75200
 Conc: 0.87 ng/ml



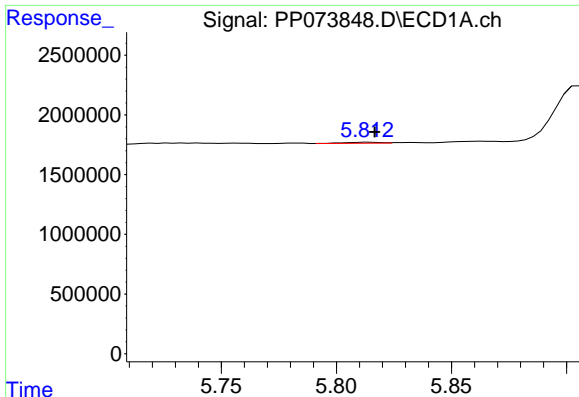
#18 AR-1242-3

R.T.: 5.727 min
 Delta R.T.: 0.008 min
 Response: 315319
 Conc: 8.61 ng/ml



#18 AR-1242-3

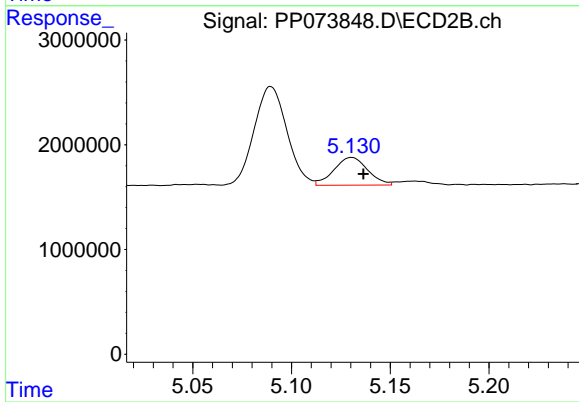
R.T.: 5.052 min
 Delta R.T.: 0.000 min
 Response: 184143
 Conc: 4.01 ng/ml



#19 AR-1242-4

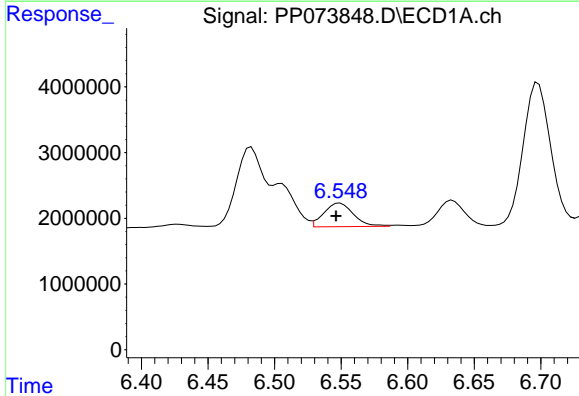
R.T.: 5.814 min
 Delta R.T.: -0.003 min
 Response: 98496
 Conc: 3.06 ng/ml

Instrument :
 ECD_P
 ClientSampleId :
 CHRT-26899DL



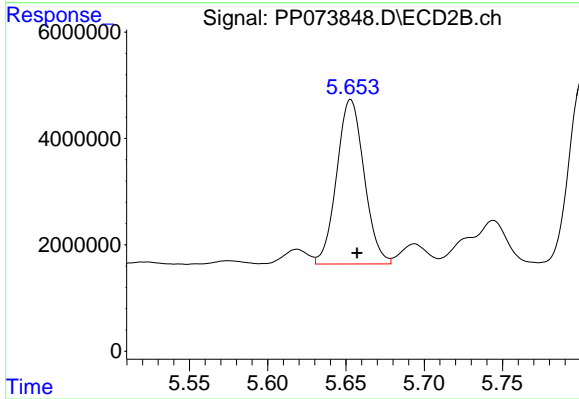
#19 AR-1242-4

R.T.: 5.130 min
 Delta R.T.: -0.006 min
 Response: 3165112
 Conc: 71.51 ng/ml



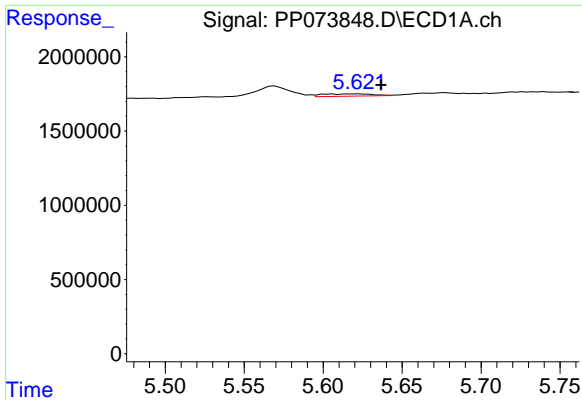
#20 AR-1242-5

R.T.: 6.549 min
 Delta R.T.: 0.003 min
 Response: 5552396
 Conc: 169.61 ng/ml



#20 AR-1242-5

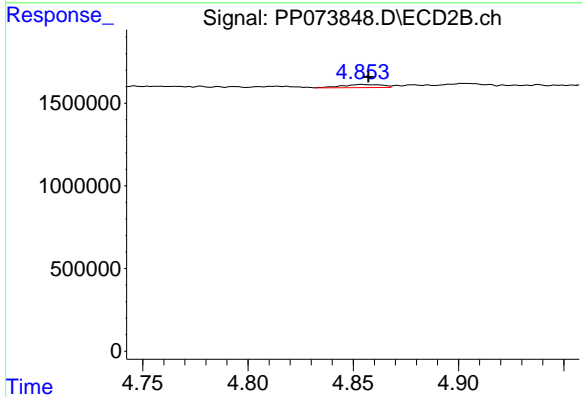
R.T.: 5.653 min
 Delta R.T.: -0.004 min
 Response: 37771178
 Conc: 683.73 ng/ml



#21 AR-1248-1

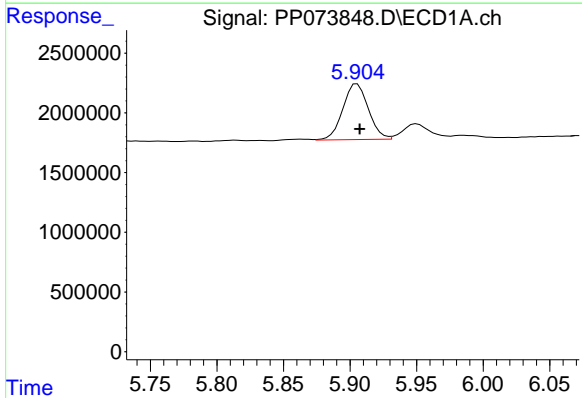
R.T.: 5.623 min
 Delta R.T.: -0.014 min
 Response: 344236
 Conc: 11.15 ng/ml

Instrument :
 ECD_P
 ClientSampleId :
 CHRT-26899DL



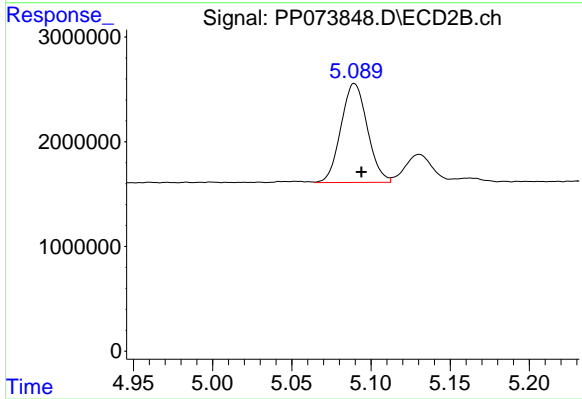
#21 AR-1248-1

R.T.: 4.854 min
 Delta R.T.: -0.003 min
 Response: 250049
 Conc: 5.57 ng/ml



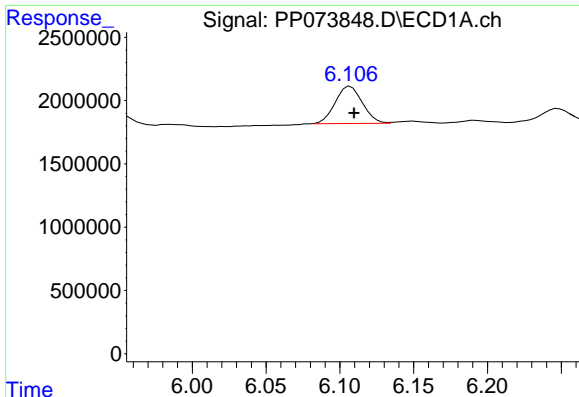
#22 AR-1248-2

R.T.: 5.905 min
 Delta R.T.: -0.002 min
 Response: 6225964
 Conc: 155.95 ng/ml



#22 AR-1248-2

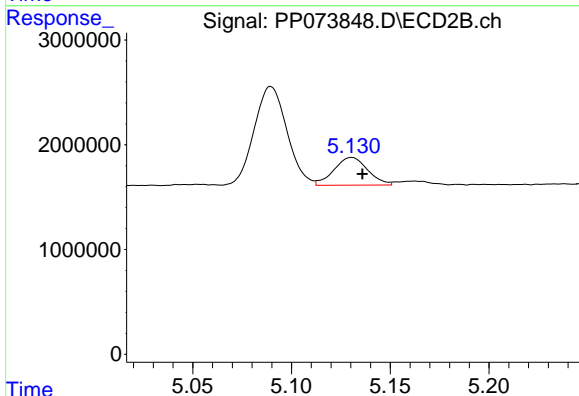
R.T.: 5.089 min
 Delta R.T.: -0.004 min
 Response: 10982639
 Conc: 178.47 ng/ml



#23 AR-1248-3

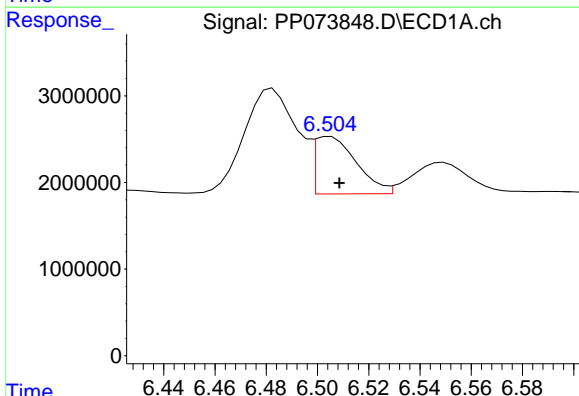
R.T.: 6.107 min
 Delta R.T.: -0.002 min
 Response: 3765772
 Conc: 84.80 ng/ml

Instrument :
 ECD_P
 ClientSampleId :
 CHRT-26899DL



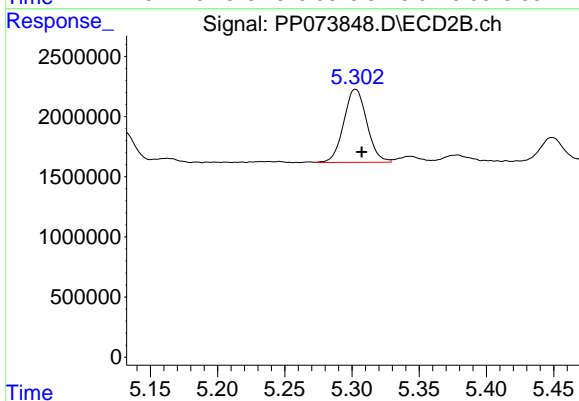
#23 AR-1248-3

R.T.: 5.130 min
 Delta R.T.: -0.005 min
 Response: 3165112
 Conc: 49.41 ng/ml



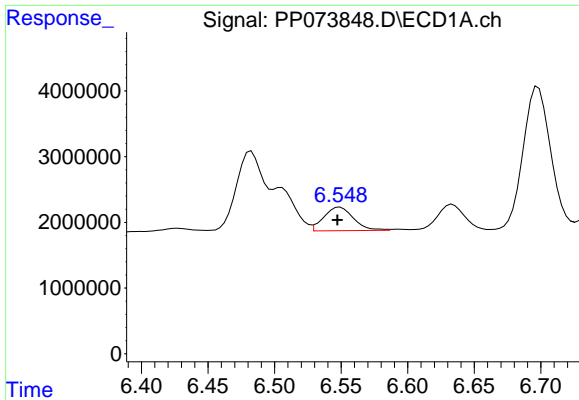
#24 AR-1248-4

R.T.: 6.505 min
 Delta R.T.: -0.004 min
 Response: 7505714
 Conc: 136.27 ng/ml



#24 AR-1248-4

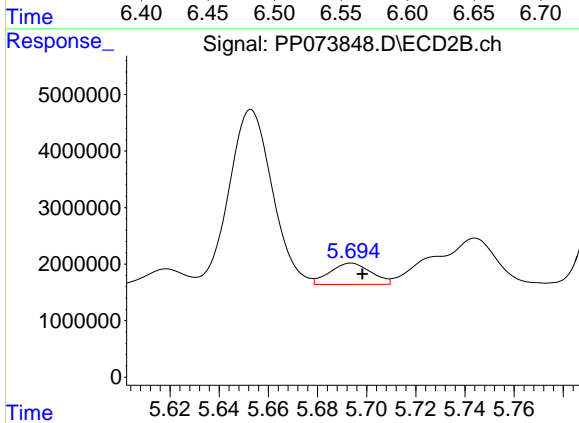
R.T.: 5.303 min
 Delta R.T.: -0.005 min
 Response: 7266325
 Conc: 96.40 ng/ml



#25 AR-1248-5

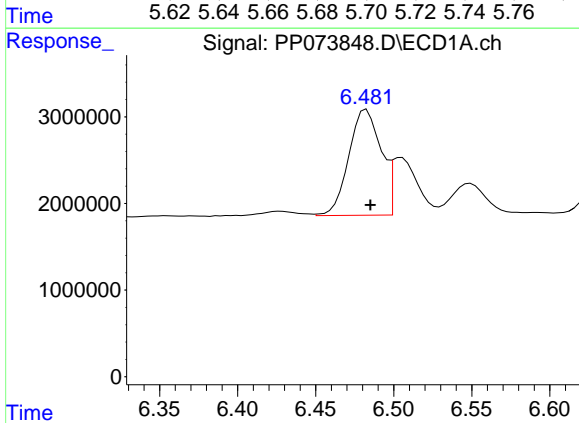
R.T.: 6.549 min
 Delta R.T.: 0.002 min
 Response: 5552396
 Conc: 103.22 ng/ml

Instrument :
 ECD_P
 ClientSampleId :
 CHRT-26899DL



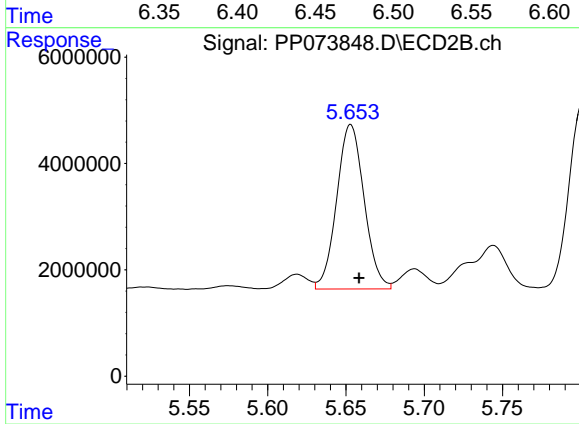
#25 AR-1248-5

R.T.: 5.694 min
 Delta R.T.: -0.004 min
 Response: 4387470
 Conc: 58.82 ng/ml



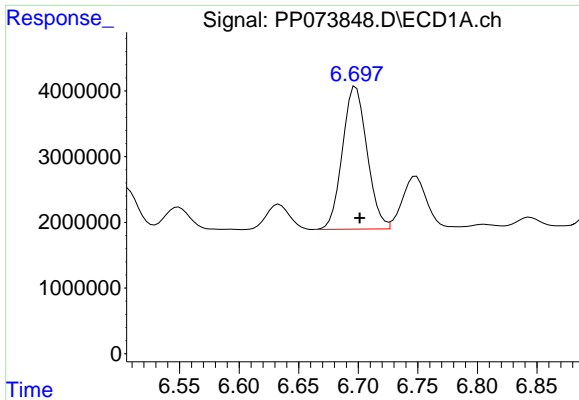
#26 AR-1254-1

R.T.: 6.483 min
 Delta R.T.: -0.002 min
 Response: 17568221
 Conc: 327.83 ng/ml



#26 AR-1254-1

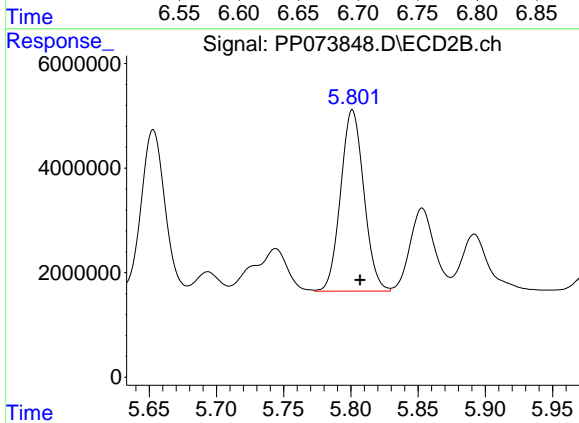
R.T.: 5.653 min
 Delta R.T.: -0.005 min
 Response: 37771178
 Conc: 325.53 ng/ml



#27 AR-1254-2

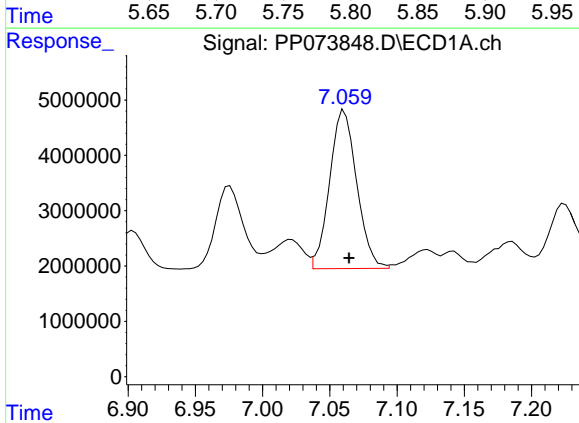
R.T.: 6.698 min
 Delta R.T.: -0.003 min
 Response: 31209794
 Conc: 374.72 ng/ml

Instrument :
 ECD_P
 ClientSampleId :
 CHRT-26899DL



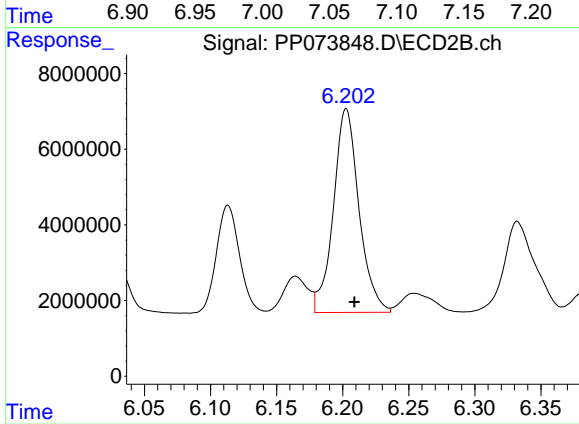
#27 AR-1254-2

R.T.: 5.801 min
 Delta R.T.: -0.006 min
 Response: 41579583
 Conc: 413.22 ng/ml



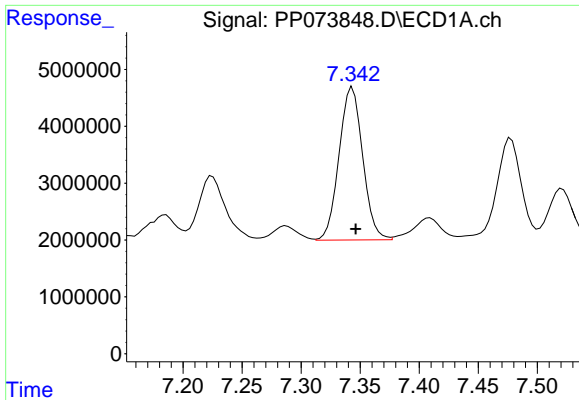
#28 AR-1254-3

R.T.: 7.061 min
 Delta R.T.: -0.004 min
 Response: 39983914
 Conc: 452.66 ng/ml



#28 AR-1254-3

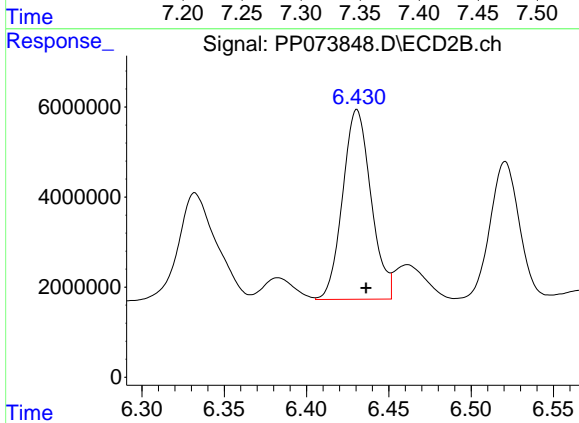
R.T.: 6.203 min
 Delta R.T.: -0.006 min
 Response: 72721773
 Conc: 470.85 ng/ml



#29 AR-1254-4

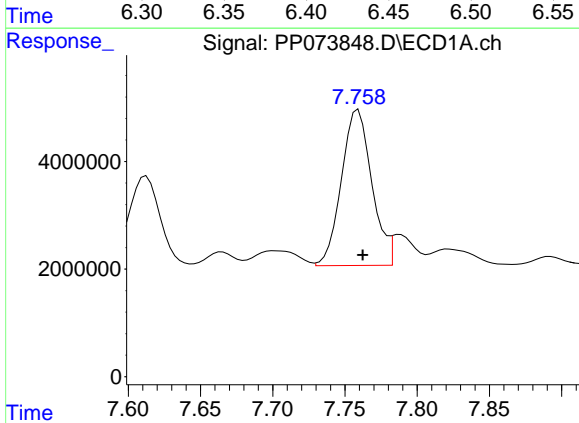
R.T.: 7.343 min
 Delta R.T.: -0.003 min
 Response: 37449862
 Conc: 476.06 ng/ml

Instrument :
 ECD_P
 ClientSampleId :
 CHRT-26899DL



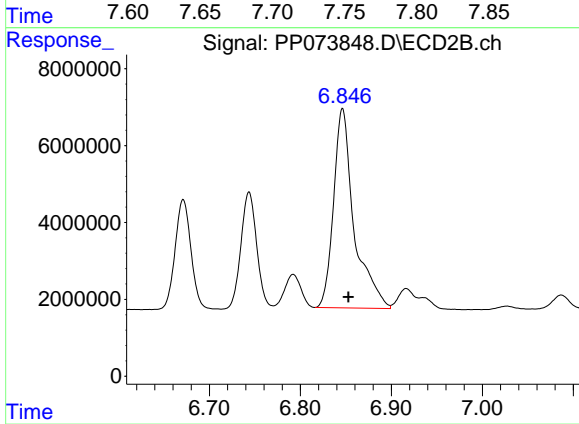
#29 AR-1254-4

R.T.: 6.431 min
 Delta R.T.: -0.006 min
 Response: 50547898
 Conc: 534.56 ng/ml



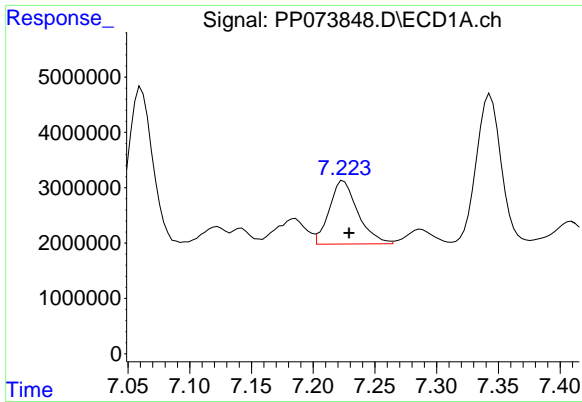
#30 AR-1254-5

R.T.: 7.759 min
 Delta R.T.: -0.003 min
 Response: 42300920
 Conc: 574.12 ng/ml



#30 AR-1254-5

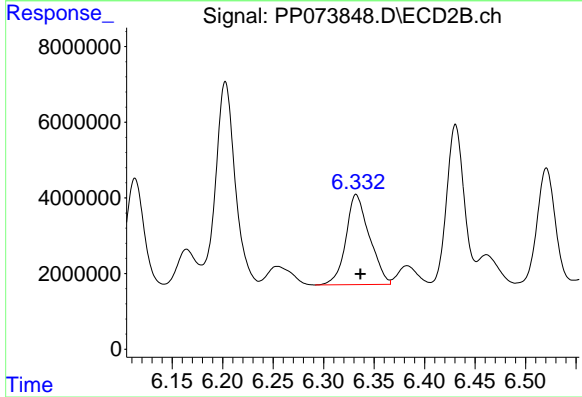
R.T.: 6.846 min
 Delta R.T.: -0.006 min
 Response: 81202545
 Conc: 608.51 ng/ml



#31 AR-1260-1

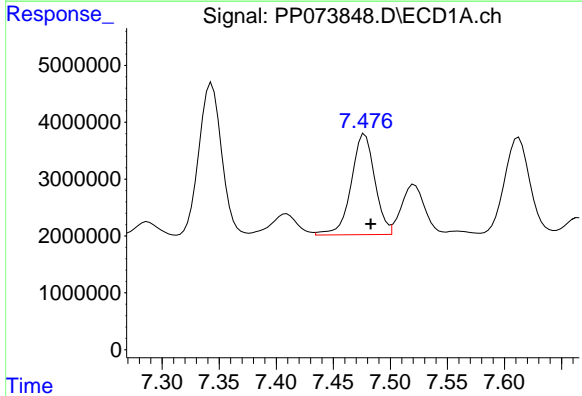
R.T.: 7.225 min
 Delta R.T.: -0.004 min
 Response: 18444989
 Conc: 312.83 ng/ml

Instrument :
 ECD_P
 ClientSampleId :
 CHRT-26899DL



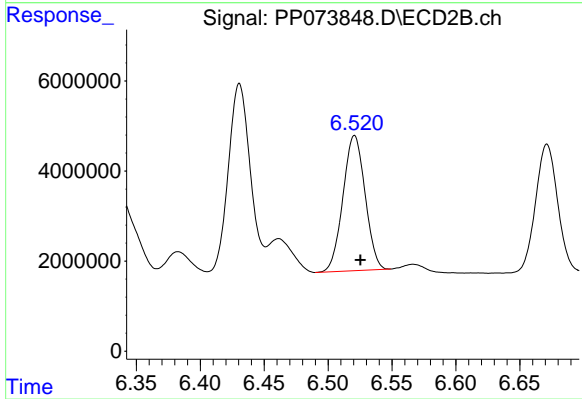
#31 AR-1260-1

R.T.: 6.332 min
 Delta R.T.: -0.004 min
 Response: 38497828
 Conc: 394.61 ng/ml



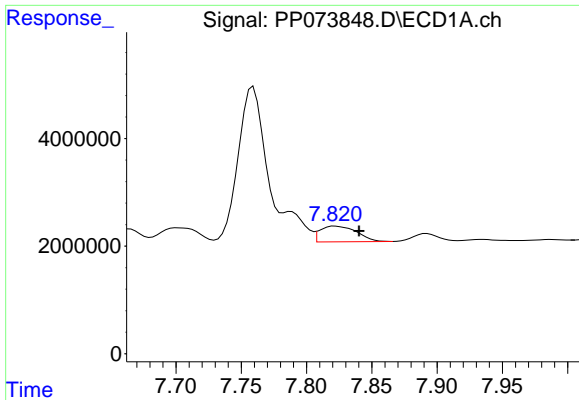
#32 AR-1260-2

R.T.: 7.478 min
 Delta R.T.: -0.005 min
 Response: 25483673
 Conc: 265.90 ng/ml



#32 AR-1260-2

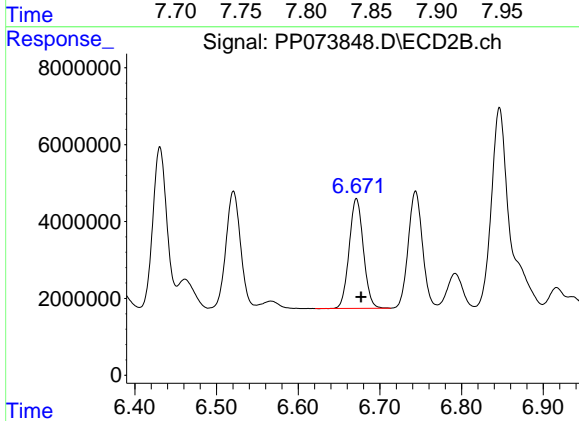
R.T.: 6.521 min
 Delta R.T.: -0.004 min
 Response: 36224024
 Conc: 294.89 ng/ml



#33 AR-1260-3

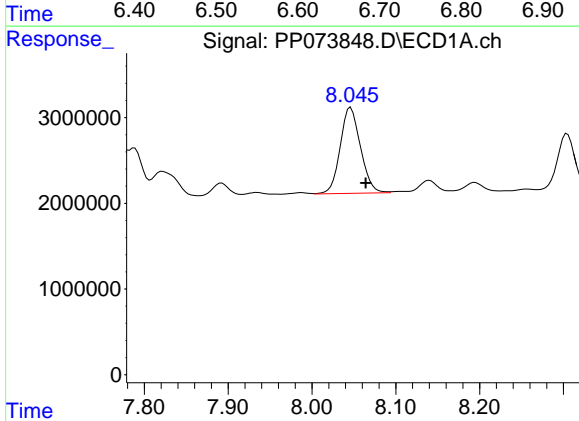
R.T.: 7.822 min
 Delta R.T.: -0.018 min
 Response: 5755104
 Conc: 78.76 ng/ml

Instrument :
 ECD_P
 ClientSampleId :
 CHRT-26899DL



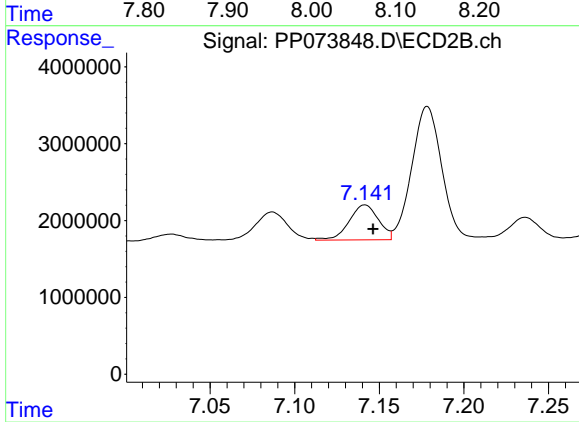
#33 AR-1260-3

R.T.: 6.671 min
 Delta R.T.: -0.006 min
 Response: 34522112
 Conc: 315.37 ng/ml



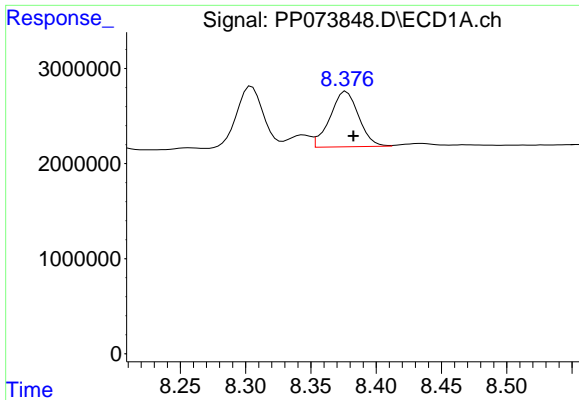
#34 AR-1260-4

R.T.: 8.046 min
 Delta R.T.: -0.018 min
 Response: 16897895
 Conc: 258.77 ng/ml



#34 AR-1260-4

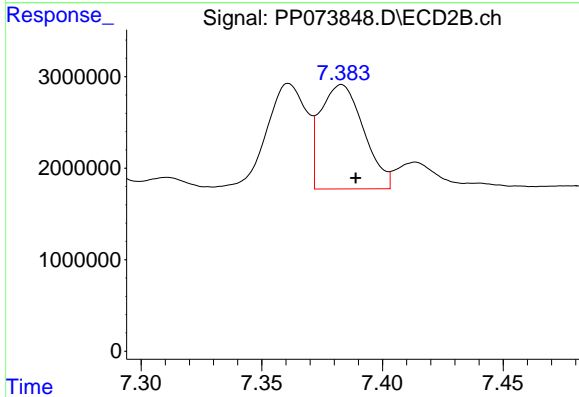
R.T.: 7.141 min
 Delta R.T.: -0.005 min
 Response: 5503657
 Conc: 61.56 ng/ml



#35 AR-1260-5

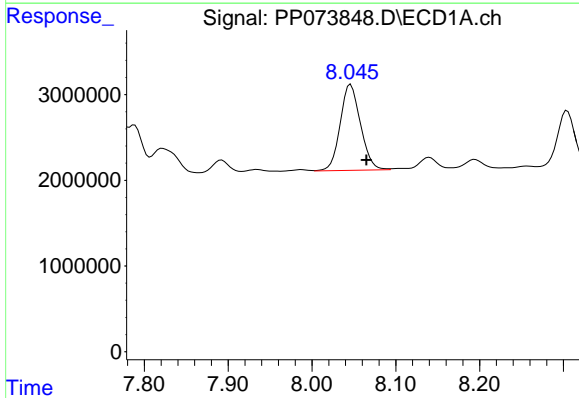
R.T.: 8.377 min
 Delta R.T.: -0.005 min
 Response: 8879163
 Conc: 58.86 ng/ml

Instrument :
 ECD_P
 ClientSampleId :
 CHRT-26899DL



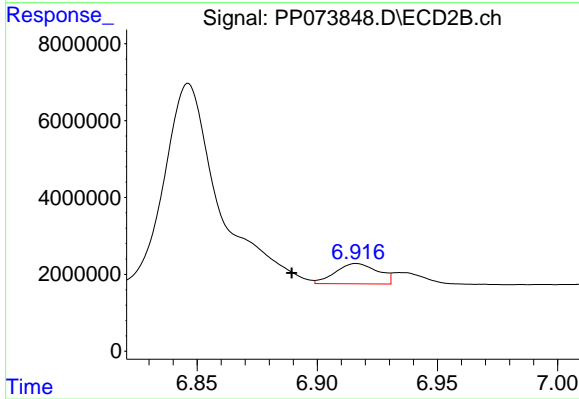
#35 AR-1260-5

R.T.: 7.383 min
 Delta R.T.: -0.006 min
 Response: 14222302
 Conc: 63.28 ng/ml



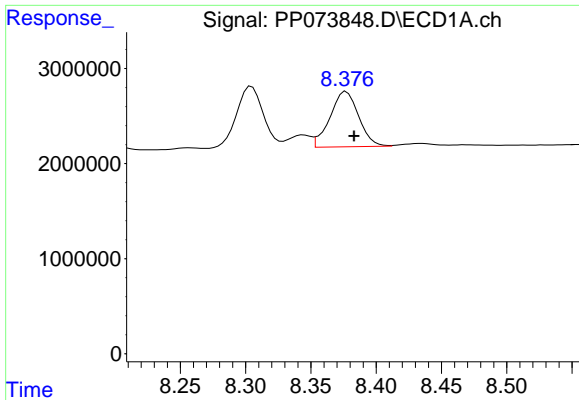
#36 AR-1262-1

R.T.: 8.046 min
 Delta R.T.: -0.019 min
 Response: 16897895
 Conc: 194.17 ng/ml



#36 AR-1262-1

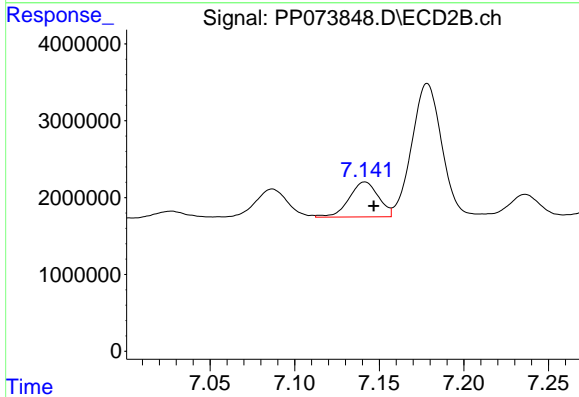
R.T.: 6.916 min
 Delta R.T.: 0.027 min
 Response: 6475677
 Conc: 43.85 ng/ml



#37 AR-1262-2

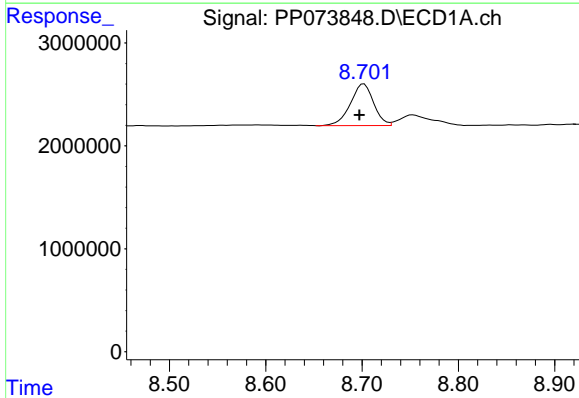
R.T.: 8.377 min
 Delta R.T.: -0.006 min
 Response: 8879163
 Conc: 44.84 ng/ml

Instrument :
 ECD_P
 ClientSampleId :
 CHRT-26899DL



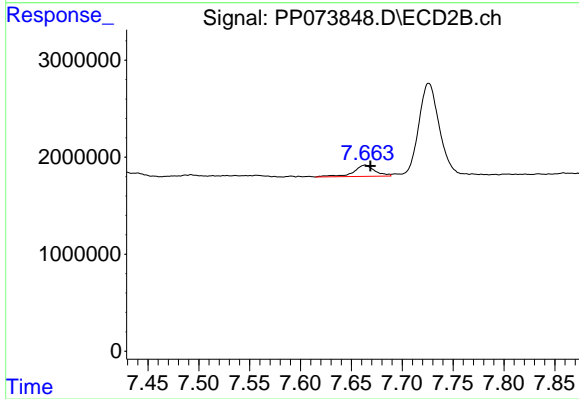
#37 AR-1262-2

R.T.: 7.141 min
 Delta R.T.: -0.005 min
 Response: 5503657
 Conc: 43.05 ng/ml



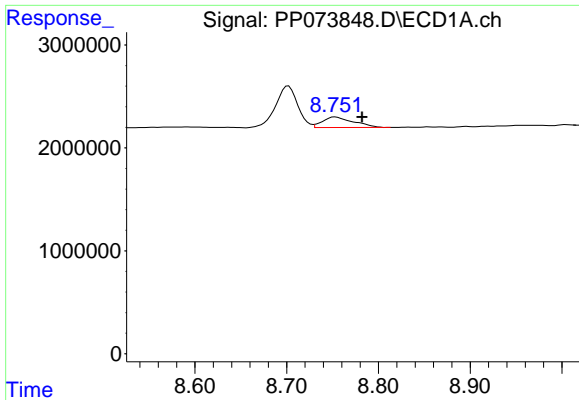
#38 AR-1262-3

R.T.: 8.702 min
 Delta R.T.: 0.005 min
 Response: 6775881
 Conc: 53.89 ng/ml



#38 AR-1262-3

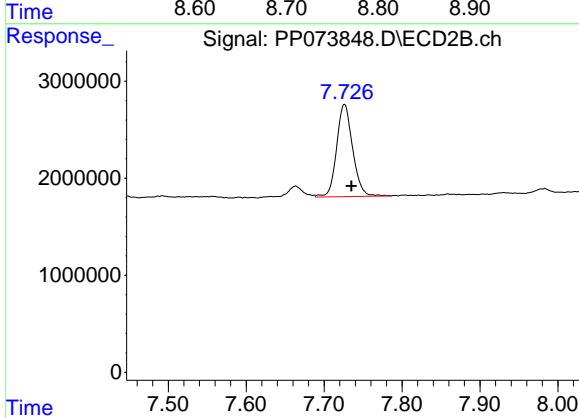
R.T.: 7.663 min
 Delta R.T.: -0.005 min
 Response: 1687748
 Conc: 14.80 ng/ml



#39 AR-1262-4

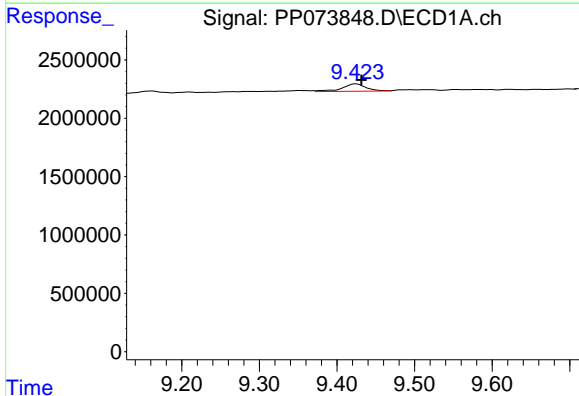
R.T.: 8.753 min
 Delta R.T.: -0.029 min
 Response: 2410109
 Conc: 25.84 ng/ml

Instrument :
 ECD_P
 ClientSampleId :
 CHRT-26899DL



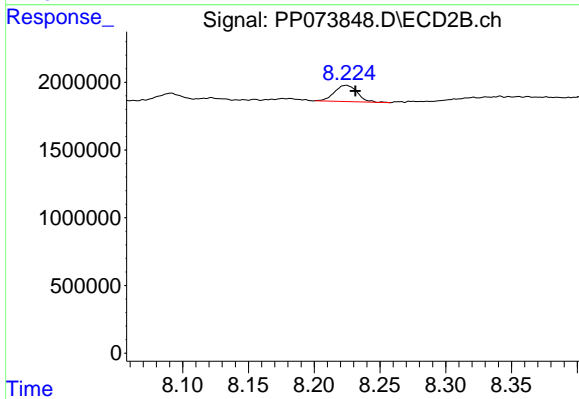
#39 AR-1262-4

R.T.: 7.726 min
 Delta R.T.: -0.009 min
 Response: 13583852
 Conc: 73.81 ng/ml



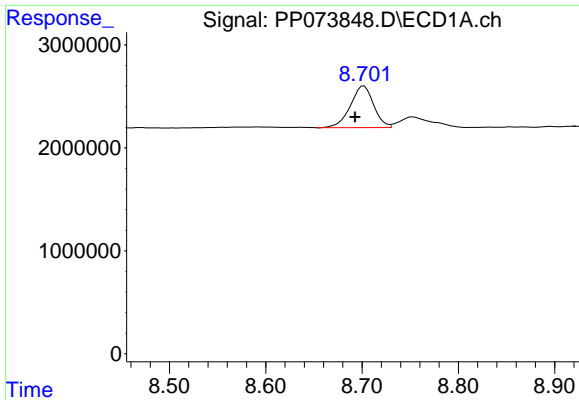
#40 AR-1262-5

R.T.: 9.424 min
 Delta R.T.: -0.007 min
 Response: 1347964
 Conc: 21.26 ng/ml



#40 AR-1262-5

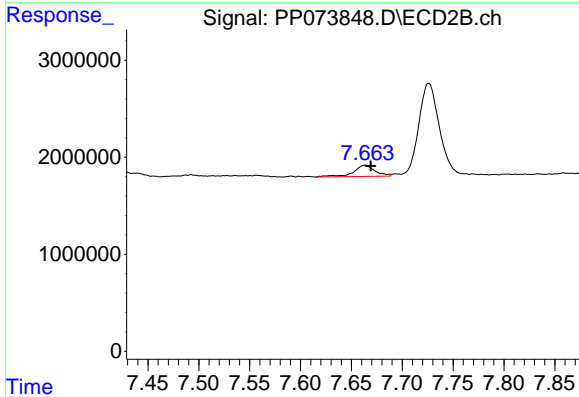
R.T.: 8.224 min
 Delta R.T.: -0.007 min
 Response: 1460968
 Conc: 17.30 ng/ml



#41 AR-1268-1

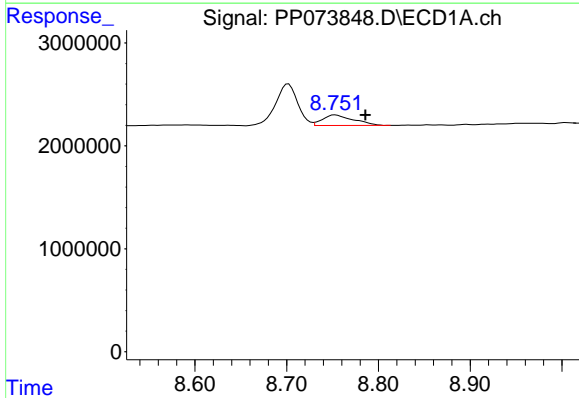
R.T.: 8.702 min
 Delta R.T.: 0.009 min
 Response: 6775881
 Conc: 30.35 ng/ml

Instrument :
 ECD_P
 ClientSampleId :
 CHRT-26899DL



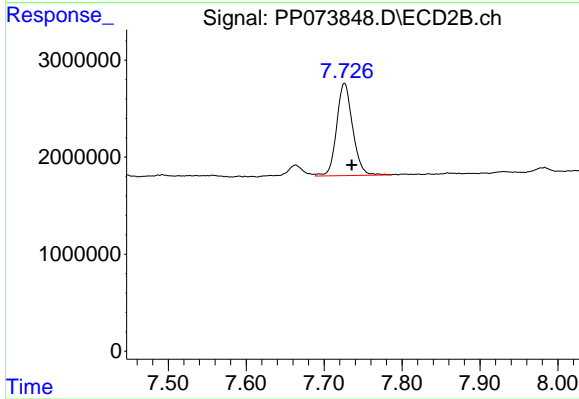
#41 AR-1268-1

R.T.: 7.663 min
 Delta R.T.: -0.005 min
 Response: 1687748
 Conc: 5.49 ng/ml



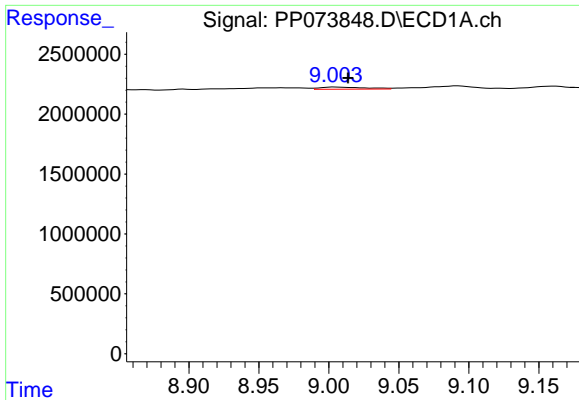
#42 AR-1268-2

R.T.: 8.753 min
 Delta R.T.: -0.033 min
 Response: 2410109
 Conc: 12.65 ng/ml



#42 AR-1268-2

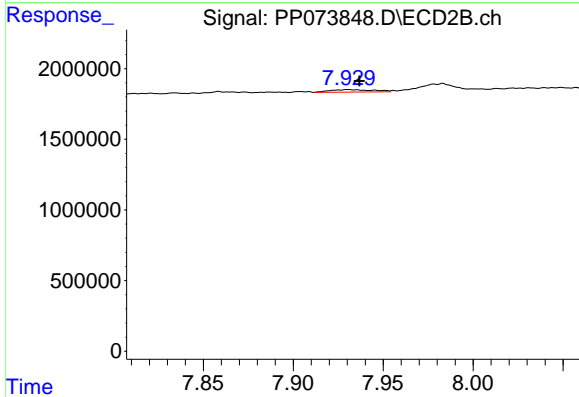
R.T.: 7.726 min
 Delta R.T.: -0.009 min
 Response: 13583852
 Conc: 51.13 ng/ml



#43 AR-1268-3

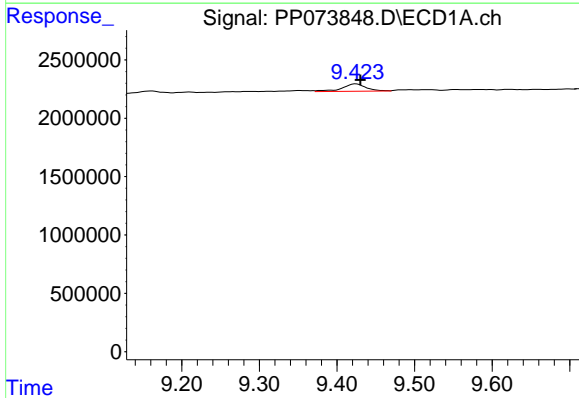
R.T.: 9.005 min
 Delta R.T.: -0.009 min
 Response: 409898
 Conc: 2.48 ng/ml

Instrument :
 ECD_P
 ClientSampleId :
 CHRT-26899DL



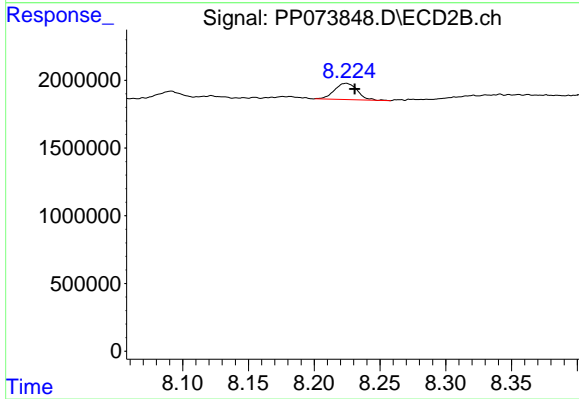
#43 AR-1268-3

R.T.: 7.931 min
 Delta R.T.: -0.006 min
 Response: 304898
 Conc: 1.35 ng/ml



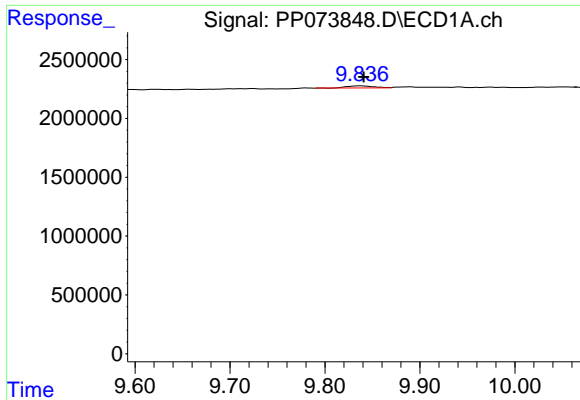
#44 AR-1268-4

R.T.: 9.424 min
 Delta R.T.: -0.006 min
 Response: 1347964
 Conc: 19.38 ng/ml



#44 AR-1268-4

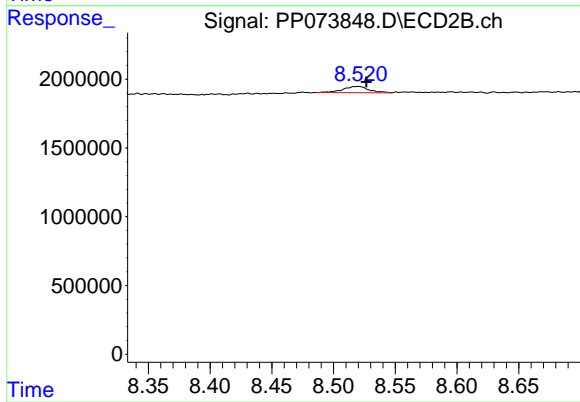
R.T.: 8.224 min
 Delta R.T.: -0.007 min
 Response: 1460968
 Conc: 15.71 ng/ml



#45 AR-1268-5

R.T.: 9.838 min
 Delta R.T.: -0.003 min
 Response: 355135
 Conc: 0.77 ng/ml

Instrument :
 ECD_P
 ClientSampleId :
 CHRT-26899DL



#45 AR-1268-5

R.T.: 8.520 min
 Delta R.T.: -0.007 min
 Response: 670213
 Conc: 1.09 ng/ml