

Data Path : Z:\pestpcbsrv\HPCHEM1\ECD_P\Data\PP071625\
 Data File : PP073881.D
 Signal(s) : Signal #1: ECD1A.ch Signal #2: ECD2B.ch
 Acq On : 17 Jul 2025 01:23
 Operator : YP\AJ
 Sample : AR1248CCC500
 Misc :
 ALS Vial : 5 Sample Multiplier: 1

Instrument :
 ECD_P
 ClientSampleId :
 AR1248CCC500

Integration File signal 1: autoint1.e
 Integration File signal 2: autoint2.e
 Quant Time: Jul 17 02:09:02 2025
 Quant Method : Z:\pestpcbsrv\HPCHEM1\ECD_P\methods\PP070825.M
 Quant Title : GC EXTRACTABLES
 QLast Update : Tue Jul 08 08:35:32 2025
 Response via : Initial Calibration
 Integrator: ChemStation

Volume Inj. : 2 µl
 Signal #1 Phase : ZB-MR1 Signal #2 Phase: ZB-MR2
 Signal #1 Info : 30Mx0.32mmx 0.50µ Signal #2 Info : 30M x 0.32mm x 0.25µm

Compound	RT#1	RT#2	Resp#1	Resp#2	ng/ml	ng/ml
System Monitoring Compounds						
1) SA Tetrachlo...	4.482	3.776	62856473	91510199	45.897	49.672
2) SA Decachlor...	10.167	8.773	50846854	69538992	46.603	52.556
Target Compounds						
3) L1 AR-1016-1	5.633	4.853	13572754	22393684	285.661	328.475
4) L1 AR-1016-2	5.655	4.871	16702592	23974319	234.538	235.309
5) L1 AR-1016-3	5.717	5.048	8367260	15656488	191.632	289.365 #
6) L1 AR-1016-4	5.813	5.089	9377882	30721006	260.891	700.101 #
7) L1 AR-1016-5	6.106	5.302	20150482	38095884	643.160	697.950
8) L2 AR-1221-1	4.679	3.988	220439	145674	12.338	5.386 #
9) L2 AR-1221-2	4.783	4.076	1316831	1942112	97.511	95.387
10) L2 AR-1221-3	4.845	4.145	1355644	2152369	32.584	35.027
11) L3 AR-1232-1	4.845	4.145	1355644	2152369	41.520	46.174
12) L3 AR-1232-2	5.368	4.871	6129329	23974319	377.081	503.030 #
13) L3 AR-1232-3	5.655	5.048	16702592	15656488	506.240	625.533
14) L3 AR-1232-4	5.813	5.131	9377882	32032209	570.252	1479.118 #
15) L3 AR-1232-5	5.903	5.302	18235161	38095884	1725.122	1688.389
16) L4 AR-1242-1	5.633	4.853	13572754	22393684	355.417	387.670
17) L4 AR-1242-2	5.655	4.871	16702592	23974319	278.925	277.307
18) L4 AR-1242-3	5.717	5.048	8367260	15656488	228.483	340.754 #
19) L4 AR-1242-4	5.813	5.131	9377882	32032209	291.818	723.674 #
20) L4 AR-1242-5	6.543	5.652	24910184	53375788	760.921	966.209 #
21) L5 AR-1248-1	5.633	4.853	13572754	22393684	439.667	498.802
22) L5 AR-1248-2	5.903	5.089	18235161	30721006	456.754	499.232
23) L5 AR-1248-3	6.106	5.131	20150482	32032209	453.741	499.999
24) L5 AR-1248-4	6.504	5.302	26416978	38095884	479.607	505.402
25) L5 AR-1248-5	6.543	5.693	24910184	38232266	463.095	512.559
26) L6 AR-1254-1	6.479	5.652	18847408	53375788	351.699	460.017 #
27) L6 AR-1254-2	6.699	5.800	24054008	16540440	288.802	164.379 #
28) L6 AR-1254-3	7.060	6.201	13758085	24326041	155.755	157.505
29) L6 AR-1254-4	7.341	6.430	11160389	18171406	141.869	192.170 #
30) L6 AR-1254-5	7.757	6.845	2074787	5143204	28.160	38.542 #
31) L7 AR-1260-1	7.226	6.345	1895202	12535045	32.143	128.485 #
32) L7 AR-1260-2	7.473	6.518	2931292	2754677	30.585	22.425 #
33) L7 AR-1260-3	7.833	6.669	187594	2930965	2.567	26.776 #
34) L7 AR-1260-4	8.045	7.138	975390	731291	14.937	8.179 #
35) L7 AR-1260-5	8.376	7.382	885755	1307041	5.872	5.816
36) L8 AR-1262-1	8.045	6.913	975390	604128	11.208	4.090 #
37) L8 AR-1262-2	8.376	7.138	885755	731291	4.473	5.721 #
38) L8 AR-1262-3	8.700	7.661	199491	380106	1.587	3.334 #
39) L8 AR-1262-4	8.773	7.725	64830	680778	0.695	3.699 #
40) L8 AR-1262-5	9.427	8.222	257417	128608	4.061	1.523 #
41) L9 AR-1268-1	8.700	7.661	199491	380106	0.894	1.237 #

Data Path : Z:\pestpcbsrv\HPCHEM1\ECD_P\Data\PP071625\
 Data File : PP073881.D
 Signal(s) : Signal #1: ECD1A.ch Signal #2: ECD2B.ch
 Acq On : 17 Jul 2025 01:23
 Operator : YP\AJ
 Sample : AR1248CCC500
 Misc :
 ALS Vial : 5 Sample Multiplier: 1

Instrument :
 ECD_P
 ClientSampleId :
 AR1248CCC500

Integration File signal 1: autoint1.e
 Integration File signal 2: autoint2.e
 Quant Time: Jul 17 02:09:02 2025
 Quant Method : Z:\pestpcbsrv\HPCHEM1\ECD_P\methods\PP070825.M
 Quant Title : GC EXTRACTABLES
 QLast Update : Tue Jul 08 08:35:32 2025
 Response via : Initial Calibration
 Integrator: ChemStation

Volume Inj. : 2 µl
 Signal #1 Phase : ZB-MR1 Signal #2 Phase: ZB-MR2
 Signal #1 Info : 30Mx0.32mmx 0.50µ Signal #2 Info : 30M x 0.32mm x 0.25µm

	Compound	RT#1	RT#2	Resp#1	Resp#2	ng/ml	ng/ml
42)	L9 AR-1268-2	8.773	7.725	64830	680778	0.340	2.562 #
43)	L9 AR-1268-3	9.010	7.932	522754	242370	3.157	1.074 #
44)	L9 AR-1268-4	9.427	8.222	257417	128608	3.701	1.383 #
45)	L9 AR-1268-5	9.830	8.520	335846	482307	0.729	0.782

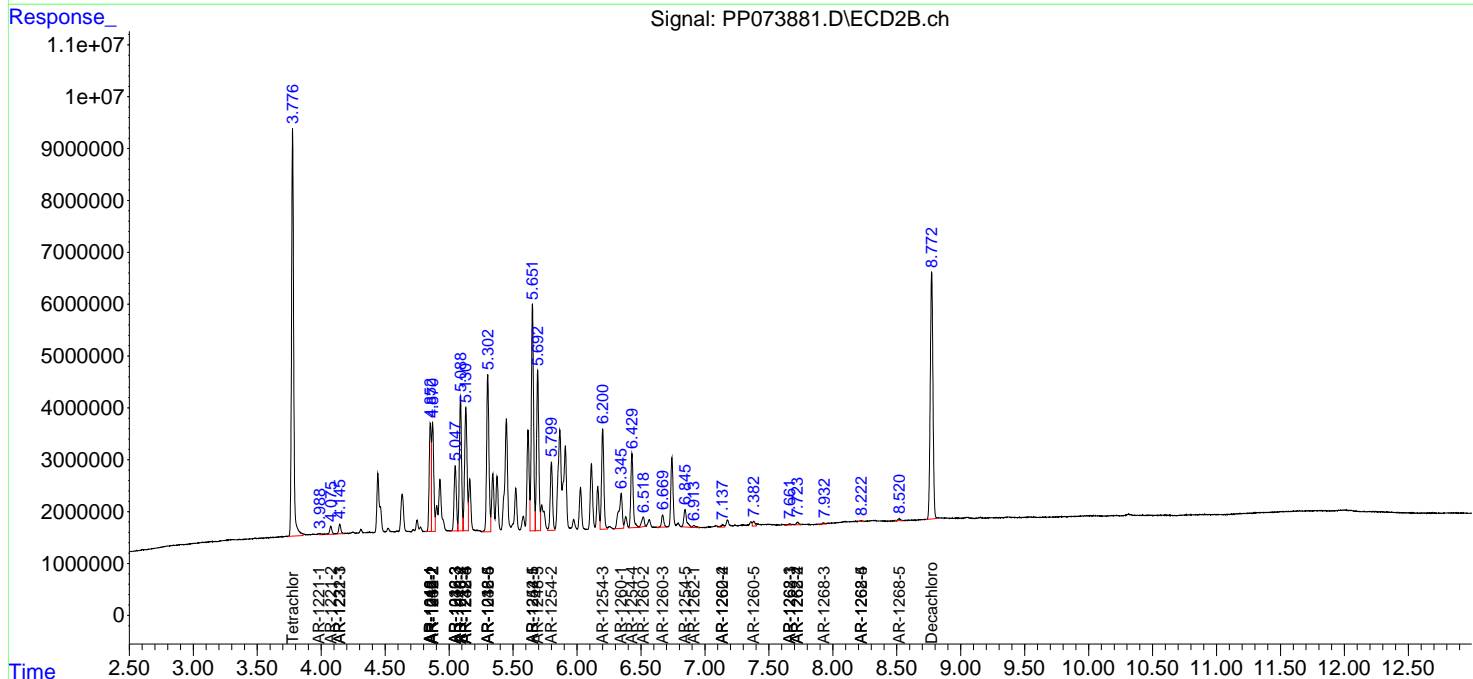
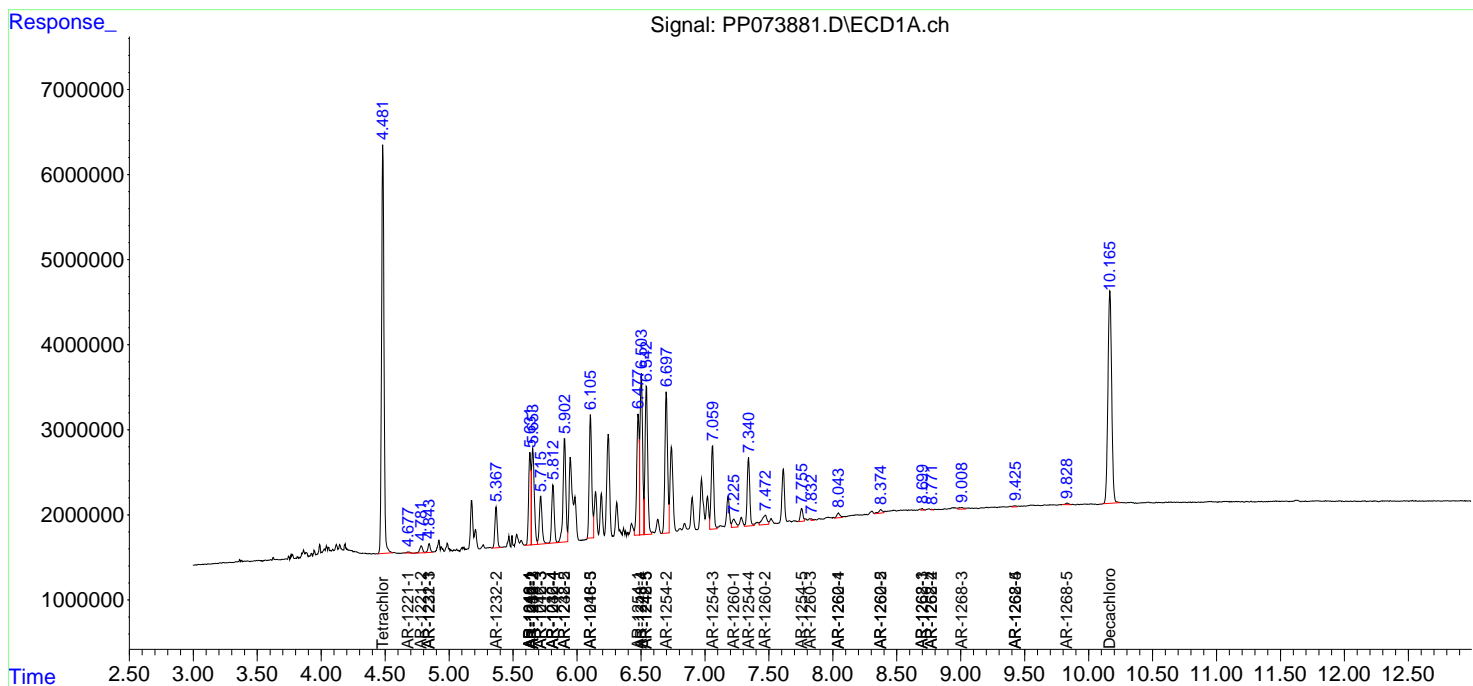
(f)=RT Delta > 1/2 Window (#)=Amounts differ by > 25% (m)=manual int.

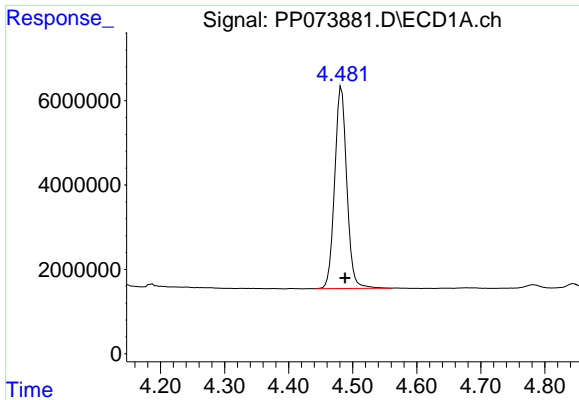
Data Path : Z:\pestpcbsrv\HPCHEM1\ECD_P\Data\PP071625\
 Data File : PP073881.D
 Signal(s) : Signal #1: ECD1A.ch Signal #2: ECD2B.ch
 Acq On : 17 Jul 2025 01:23
 Operator : YP\AJ
 Sample : AR1248CCC500
 Misc :
 ALS Vial : 5 Sample Multiplier: 1

Instrument :
 ECD_P
 ClientSampleId :
 AR1248CCC500

Integration File signal 1: autoint1.e
 Integration File signal 2: autoint2.e
 Quant Time: Jul 17 02:09:02 2025
 Quant Method : Z:\pestpcbsrv\HPCHEM1\ECD_P\methods\PP070825.M
 Quant Title : GC EXTRACTABLES
 QLast Update : Tue Jul 08 08:35:32 2025
 Response via : Initial Calibration
 Integrator: ChemStation

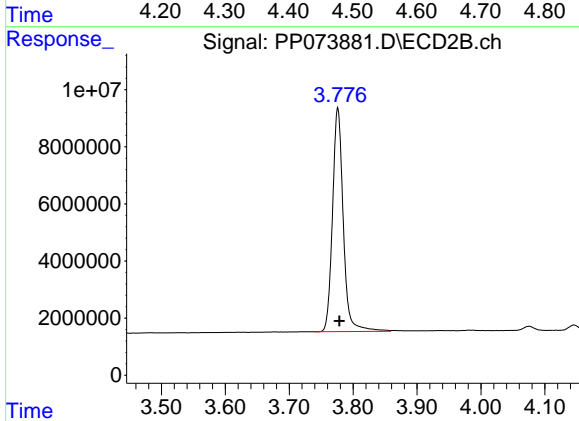
Volume Inj. : 2 µl
 Signal #1 Phase : ZB-MR1 Signal #2 Phase: ZB-MR2
 Signal #1 Info : 30Mx0.32mmx 0.50µ Signal #2 Info : 30M x 0.32mm x 0.25µm



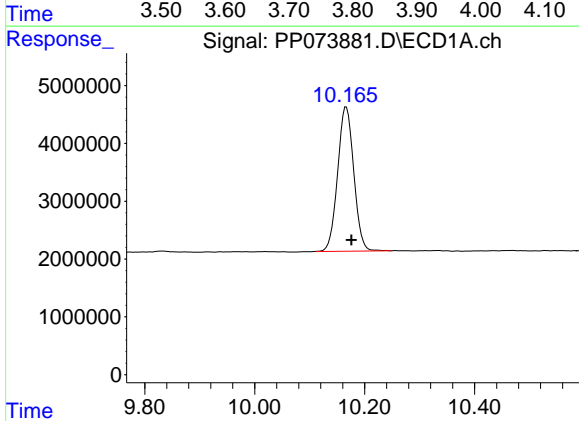


#1 Tetrachloro-m-xylene
 R.T.: 4.482 min
 Delta R.T.: -0.006 min
 Response: 62856473
 Conc: 45.90 ng/ml

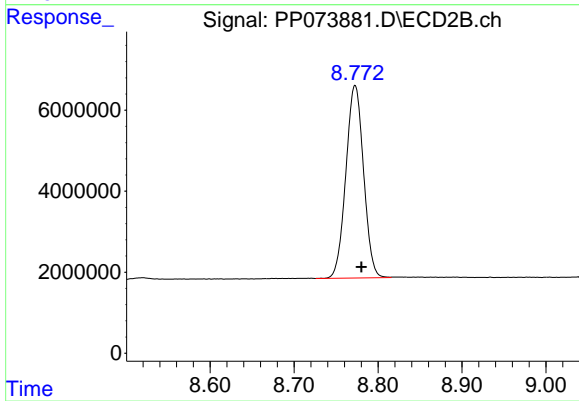
Instrument :
 ECD_P
 ClientSampleId :
 AR1248CCC500



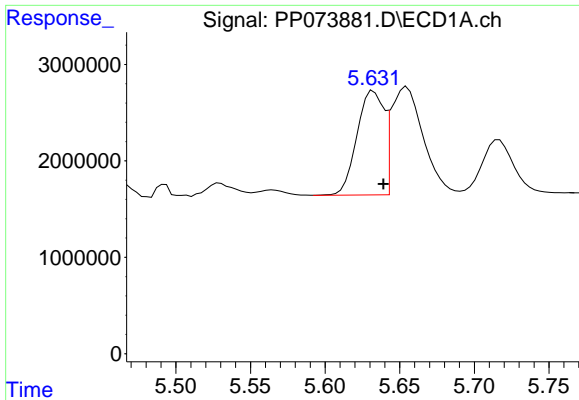
#1 Tetrachloro-m-xylene
 R.T.: 3.776 min
 Delta R.T.: -0.002 min
 Response: 91510199
 Conc: 49.67 ng/ml



#2 Decachlorobiphenyl
 R.T.: 10.167 min
 Delta R.T.: -0.009 min
 Response: 50846854
 Conc: 46.60 ng/ml



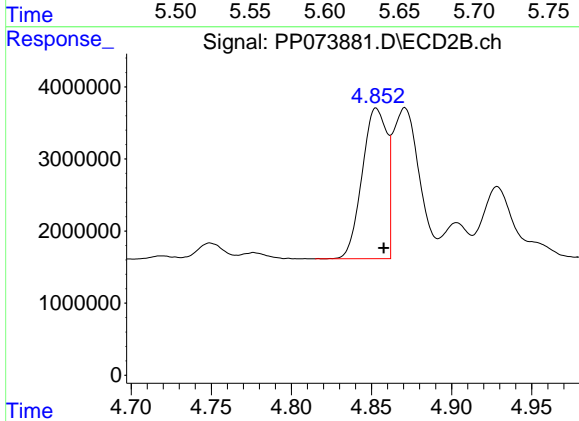
#2 Decachlorobiphenyl
 R.T.: 8.773 min
 Delta R.T.: -0.007 min
 Response: 69538992
 Conc: 52.56 ng/ml



#3 AR-1016-1

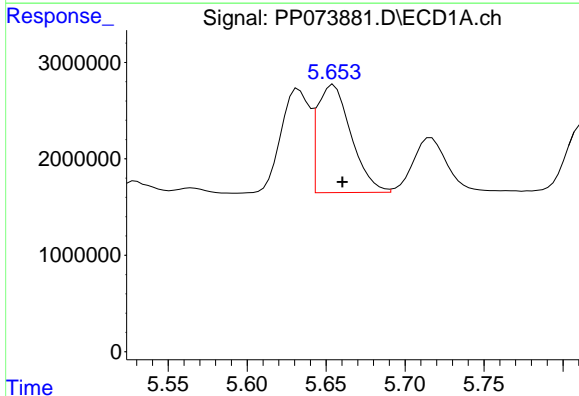
R.T.: 5.633 min
 Delta R.T.: -0.006 min
 Response: 13572754
 Conc: 285.66 ng/ml

Instrument :
 ECD_P
 ClientSampleId :
 AR1248CCC500



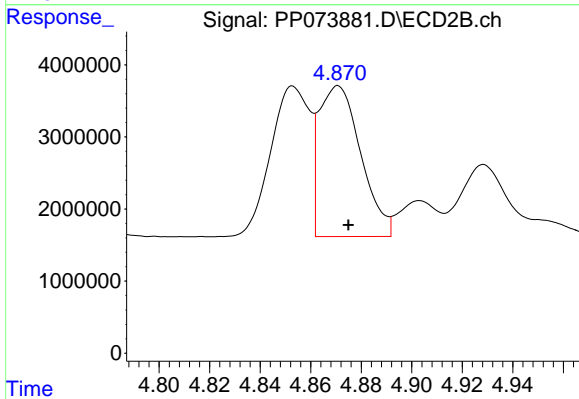
#3 AR-1016-1

R.T.: 4.853 min
 Delta R.T.: -0.005 min
 Response: 22393684
 Conc: 328.47 ng/ml



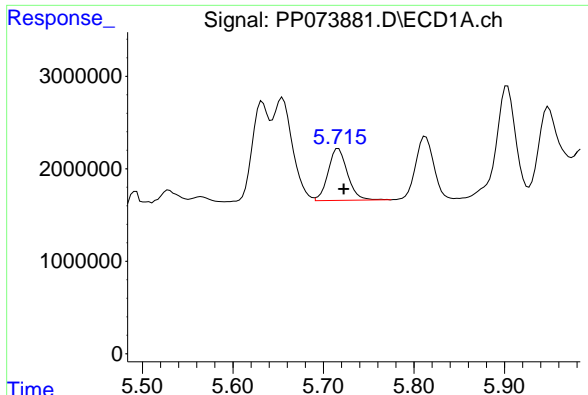
#4 AR-1016-2

R.T.: 5.655 min
 Delta R.T.: -0.006 min
 Response: 16702592
 Conc: 234.54 ng/ml



#4 AR-1016-2

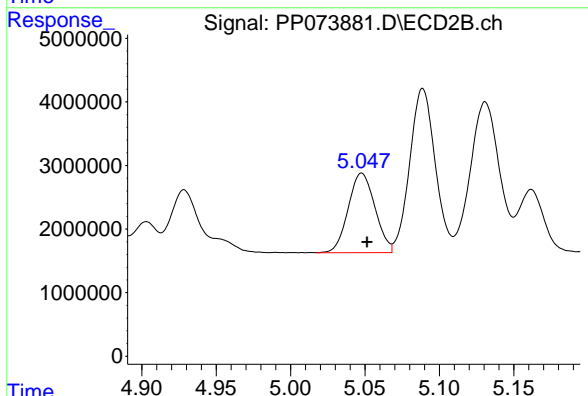
R.T.: 4.871 min
 Delta R.T.: -0.004 min
 Response: 23974319
 Conc: 235.31 ng/ml



#5 AR-1016-3

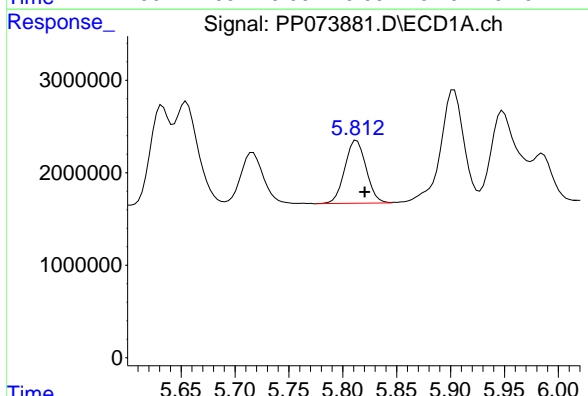
R.T.: 5.717 min
 Delta R.T.: -0.006 min
 Response: 8367260
 Conc: 191.63 ng/ml

Instrument :
 ECD_P
 ClientSampleId :
 AR1248CCC500



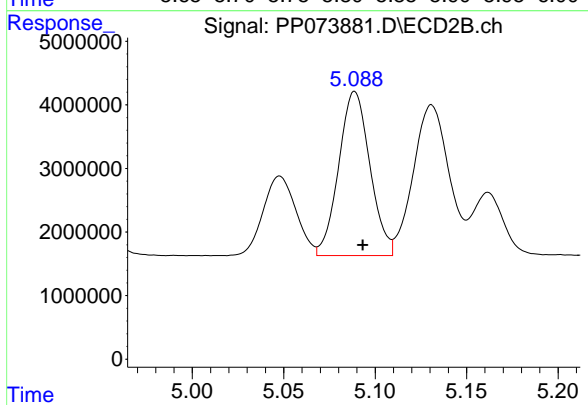
#5 AR-1016-3

R.T.: 5.048 min
 Delta R.T.: -0.004 min
 Response: 15656488
 Conc: 289.37 ng/ml



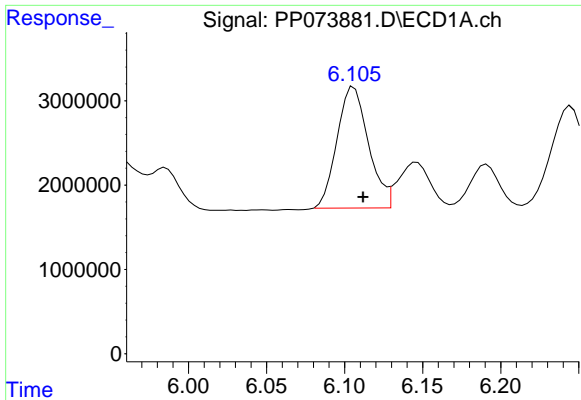
#6 AR-1016-4

R.T.: 5.813 min
 Delta R.T.: -0.007 min
 Response: 9377882
 Conc: 260.89 ng/ml



#6 AR-1016-4

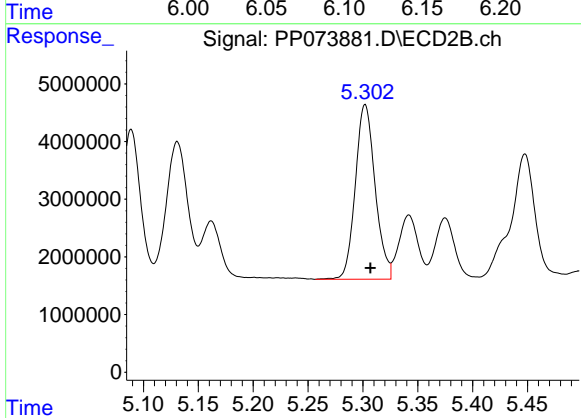
R.T.: 5.089 min
 Delta R.T.: -0.004 min
 Response: 30721006
 Conc: 700.10 ng/ml



#7 AR-1016-5

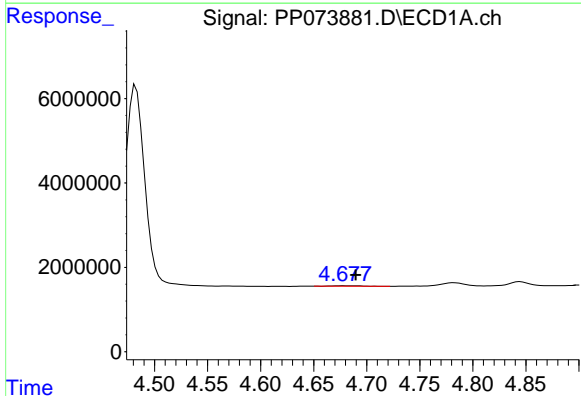
R.T.: 6.106 min
 Delta R.T.: -0.006 min
 Response: 20150482
 Conc: 643.16 ng/ml

Instrument :
 ECD_P
 ClientSampleId :
 AR1248CCC500



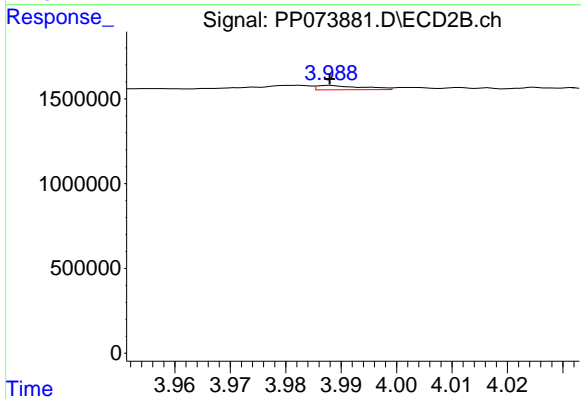
#7 AR-1016-5

R.T.: 5.302 min
 Delta R.T.: -0.005 min
 Response: 38095884
 Conc: 697.95 ng/ml



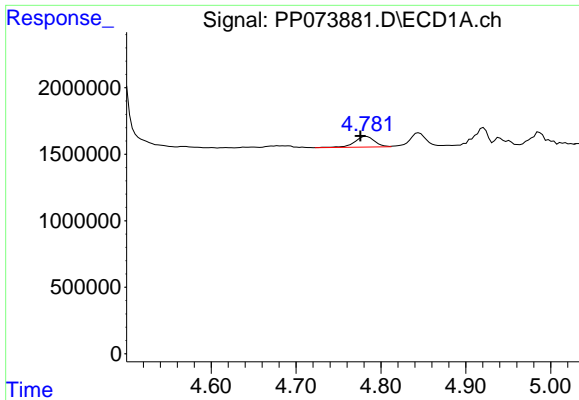
#8 AR-1221-1

R.T.: 4.679 min
 Delta R.T.: -0.011 min
 Response: 220439
 Conc: 12.34 ng/ml



#8 AR-1221-1

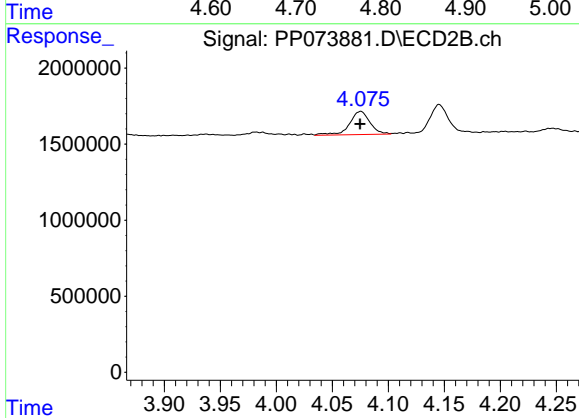
R.T.: 3.988 min
 Delta R.T.: 0.000 min
 Response: 145674
 Conc: 5.39 ng/ml



#9 AR-1221-2

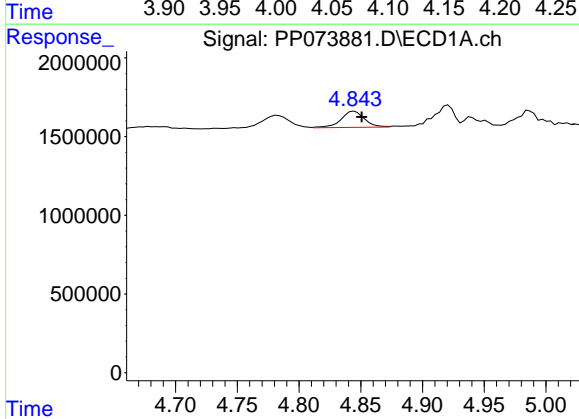
R.T.: 4.783 min
 Delta R.T.: 0.007 min
 Response: 1316831
 Conc: 97.51 ng/ml

Instrument :
 ECD_P
 ClientSampleId :
 AR1248CCC500



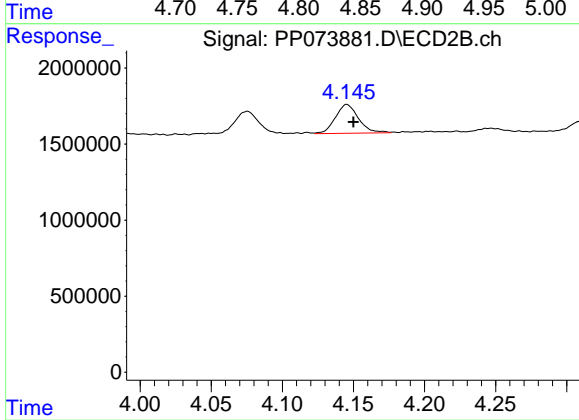
#9 AR-1221-2

R.T.: 4.076 min
 Delta R.T.: 0.000 min
 Response: 1942112
 Conc: 95.39 ng/ml



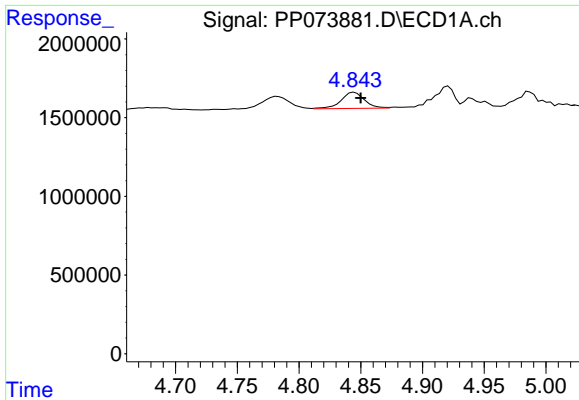
#10 AR-1221-3

R.T.: 4.845 min
 Delta R.T.: -0.006 min
 Response: 1355644
 Conc: 32.58 ng/ml



#10 AR-1221-3

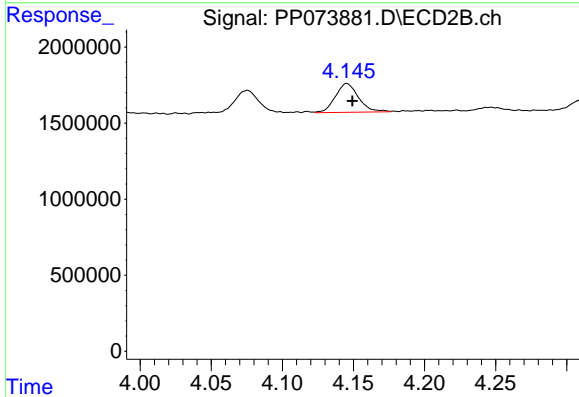
R.T.: 4.145 min
 Delta R.T.: -0.005 min
 Response: 2152369
 Conc: 35.03 ng/ml



#11 AR-1232-1

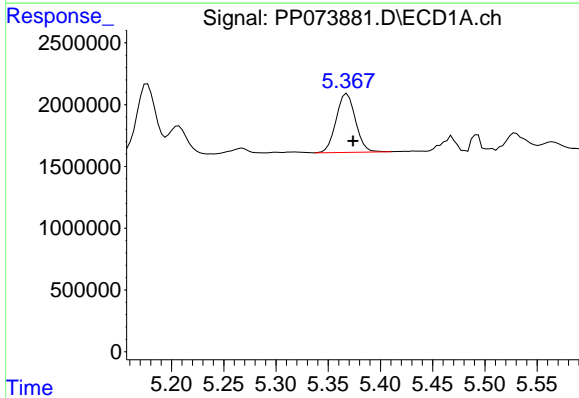
R.T.: 4.845 min
 Delta R.T.: -0.005 min
 Response: 1355644
 Conc: 41.52 ng/ml

Instrument :
 ECD_P
 ClientSampleId :
 AR1248CCC500



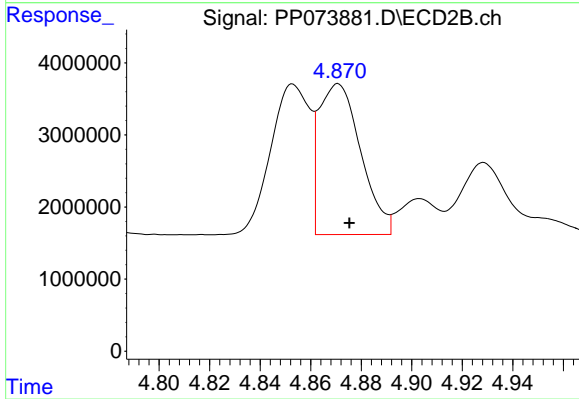
#11 AR-1232-1

R.T.: 4.145 min
 Delta R.T.: -0.004 min
 Response: 2152369
 Conc: 46.17 ng/ml



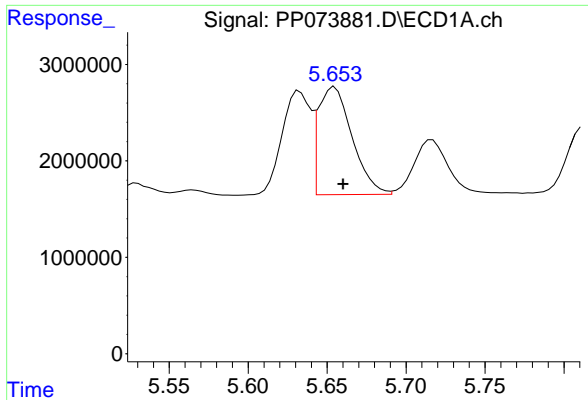
#12 AR-1232-2

R.T.: 5.368 min
 Delta R.T.: -0.006 min
 Response: 6129329
 Conc: 377.08 ng/ml



#12 AR-1232-2

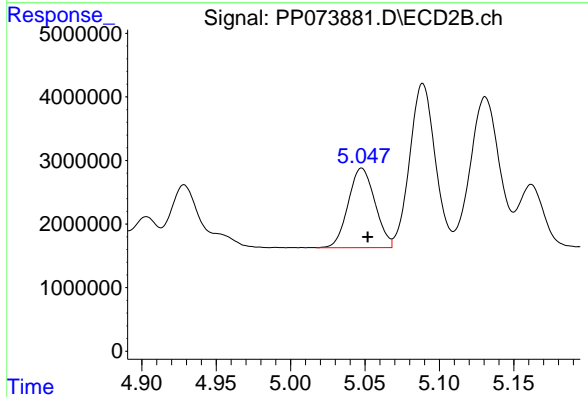
R.T.: 4.871 min
 Delta R.T.: -0.005 min
 Response: 23974319
 Conc: 503.03 ng/ml



#13 AR-1232-3

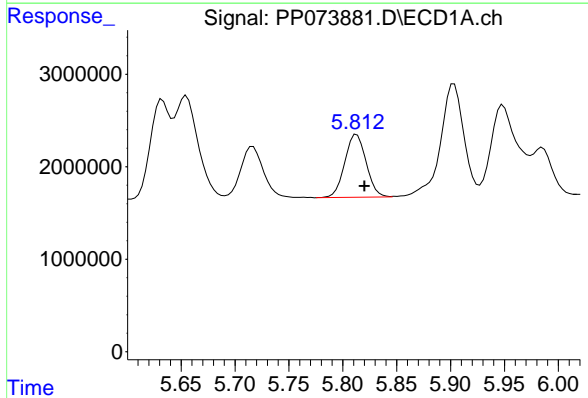
R.T.: 5.655 min
 Delta R.T.: -0.005 min
 Response: 16702592
 Conc: 506.24 ng/ml

Instrument :
 ECD_P
 ClientSampleId :
 AR1248CCC500



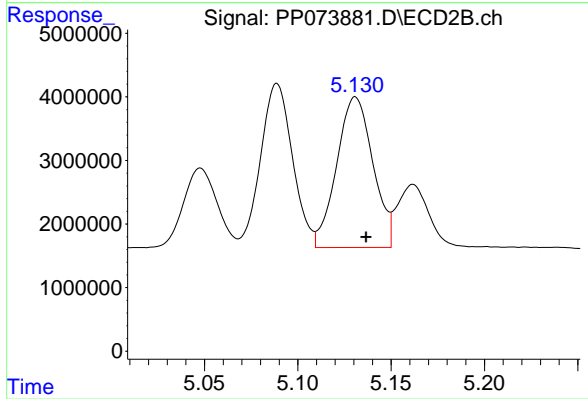
#13 AR-1232-3

R.T.: 5.048 min
 Delta R.T.: -0.004 min
 Response: 15656488
 Conc: 625.53 ng/ml



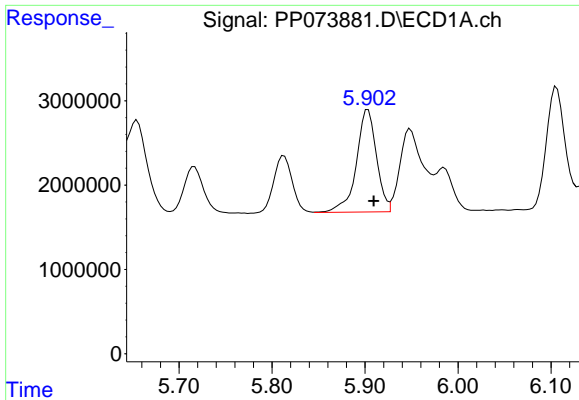
#14 AR-1232-4

R.T.: 5.813 min
 Delta R.T.: -0.007 min
 Response: 9377882
 Conc: 570.25 ng/ml



#14 AR-1232-4

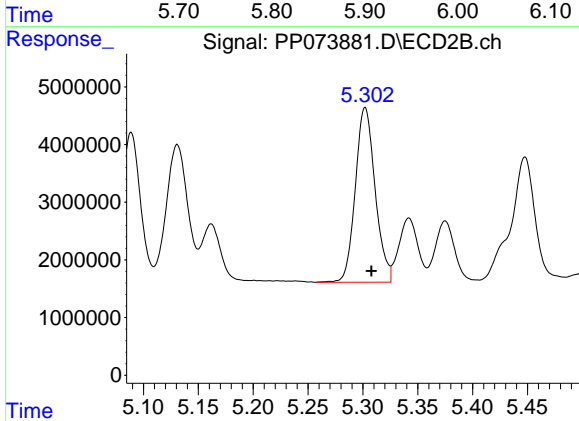
R.T.: 5.131 min
 Delta R.T.: -0.006 min
 Response: 32032209
 Conc: 1479.12 ng/ml



#15 AR-1232-5

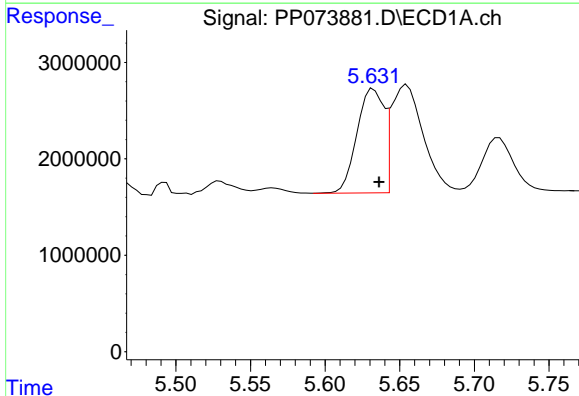
R.T.: 5.903 min
 Delta R.T.: -0.006 min
 Response: 18235161
 Conc: 1725.12 ng/ml

Instrument :
 ECD_P
 ClientSampleId :
 AR1248CCC500



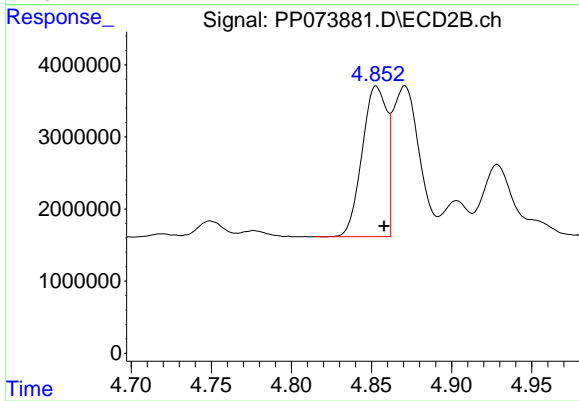
#15 AR-1232-5

R.T.: 5.302 min
 Delta R.T.: -0.006 min
 Response: 38095884
 Conc: 1688.39 ng/ml



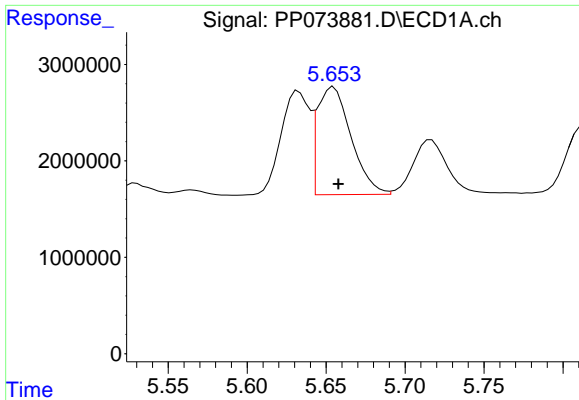
#16 AR-1242-1

R.T.: 5.633 min
 Delta R.T.: -0.004 min
 Response: 13572754
 Conc: 355.42 ng/ml



#16 AR-1242-1

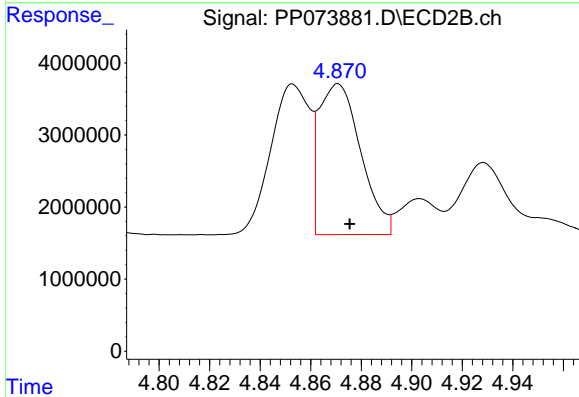
R.T.: 4.853 min
 Delta R.T.: -0.005 min
 Response: 22393684
 Conc: 387.67 ng/ml



#17 AR-1242-2

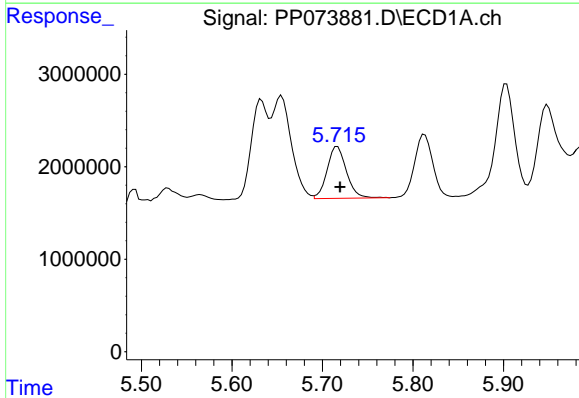
R.T.: 5.655 min
 Delta R.T.: -0.003 min
 Response: 16702592
 Conc: 278.92 ng/ml

Instrument :
 ECD_P
 ClientSampleId :
 AR1248CCC500



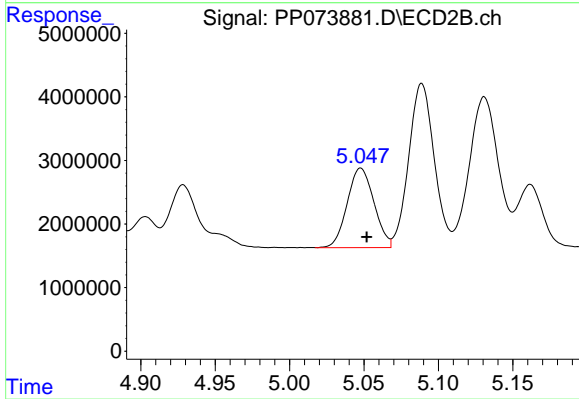
#17 AR-1242-2

R.T.: 4.871 min
 Delta R.T.: -0.005 min
 Response: 23974319
 Conc: 277.31 ng/ml



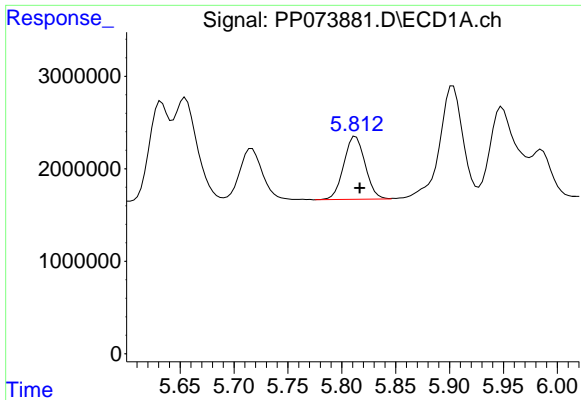
#18 AR-1242-3

R.T.: 5.717 min
 Delta R.T.: -0.003 min
 Response: 8367260
 Conc: 228.48 ng/ml



#18 AR-1242-3

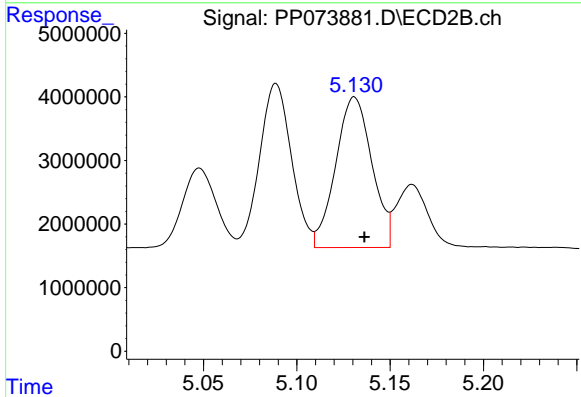
R.T.: 5.048 min
 Delta R.T.: -0.004 min
 Response: 15656488
 Conc: 340.75 ng/ml



#19 AR-1242-4

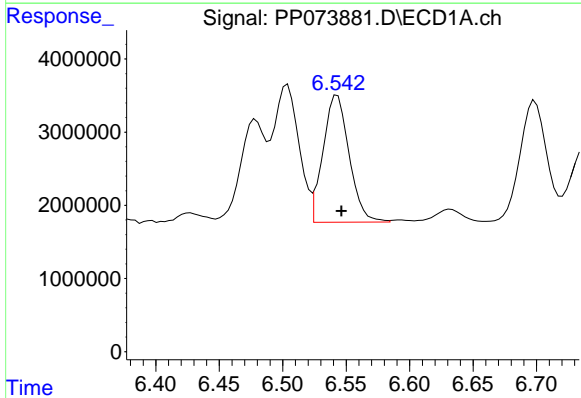
R.T.: 5.813 min
 Delta R.T.: -0.004 min
 Response: 9377882
 Conc: 291.82 ng/ml

Instrument :
 ECD_P
 ClientSampleId :
 AR1248CCC500



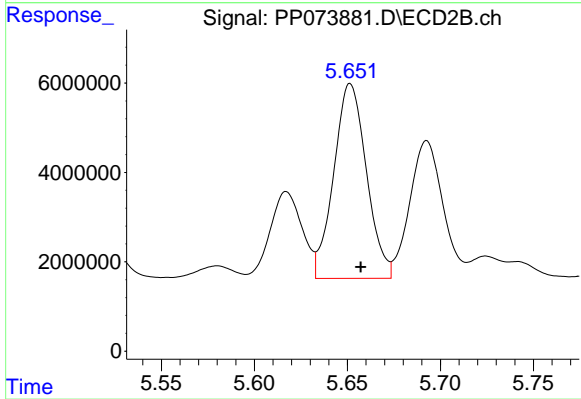
#19 AR-1242-4

R.T.: 5.131 min
 Delta R.T.: -0.005 min
 Response: 32032209
 Conc: 723.67 ng/ml



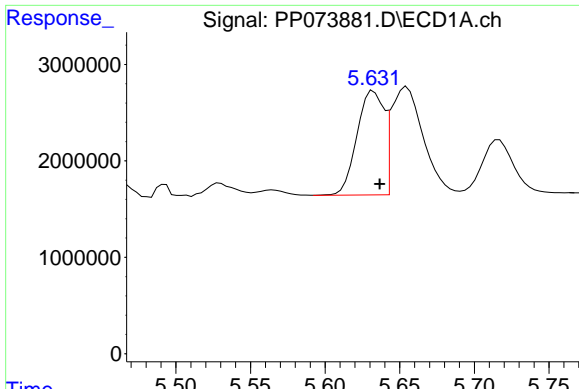
#20 AR-1242-5

R.T.: 6.543 min
 Delta R.T.: -0.003 min
 Response: 24910184
 Conc: 760.92 ng/ml



#20 AR-1242-5

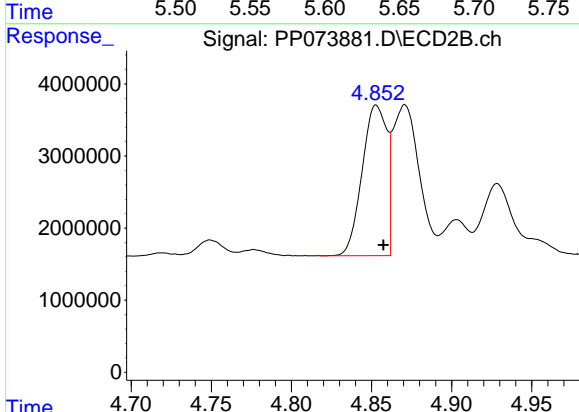
R.T.: 5.652 min
 Delta R.T.: -0.006 min
 Response: 53375788
 Conc: 966.21 ng/ml



#21 AR-1248-1

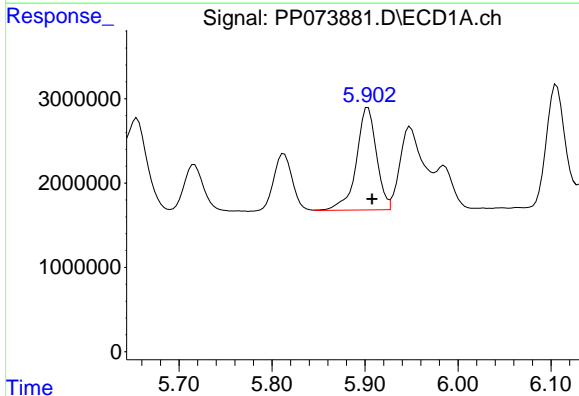
R.T.: 5.633 min
 Delta R.T.: -0.004 min
 Response: 13572754
 Conc: 439.67 ng/ml

Instrument :
 ECD_P
 ClientSampleId :
 AR1248CCC500



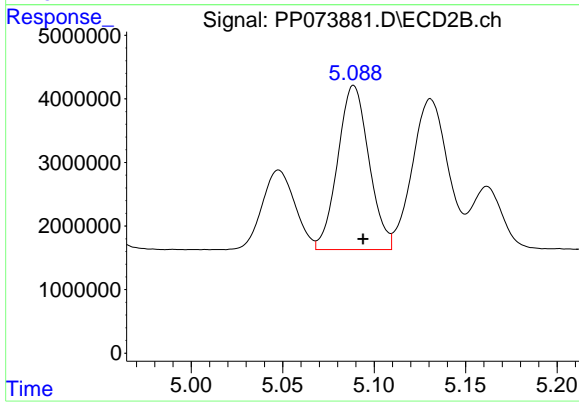
#21 AR-1248-1

R.T.: 4.853 min
 Delta R.T.: -0.004 min
 Response: 22393684
 Conc: 498.80 ng/ml



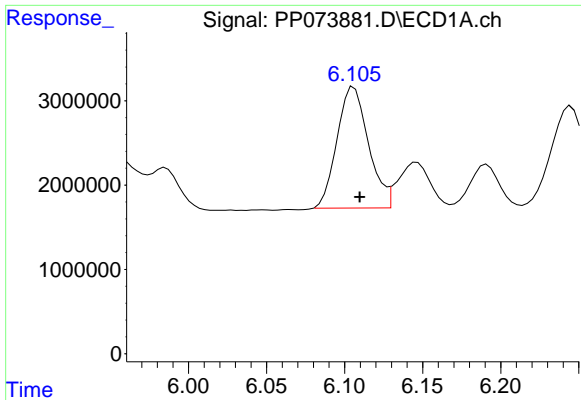
#22 AR-1248-2

R.T.: 5.903 min
 Delta R.T.: -0.004 min
 Response: 18235161
 Conc: 456.75 ng/ml



#22 AR-1248-2

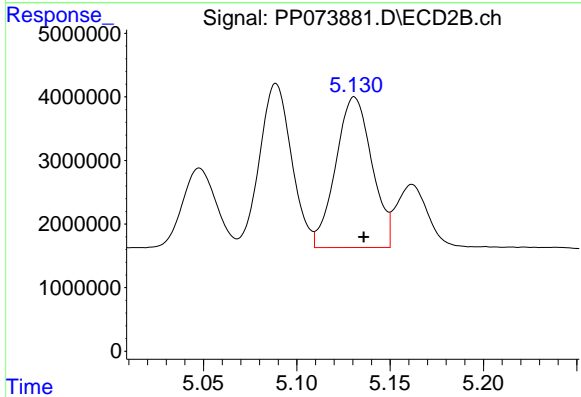
R.T.: 5.089 min
 Delta R.T.: -0.005 min
 Response: 30721006
 Conc: 499.23 ng/ml



#23 AR-1248-3

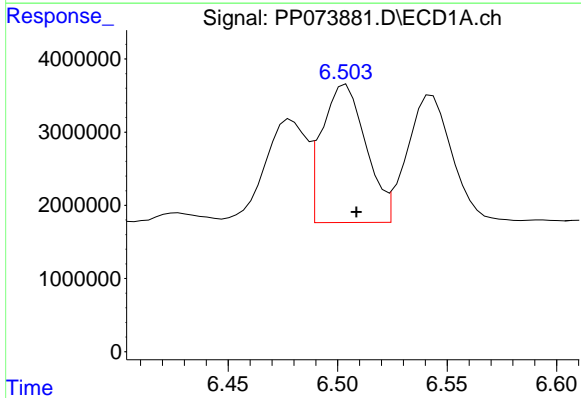
R.T.: 6.106 min
 Delta R.T.: -0.004 min
 Response: 20150482
 Conc: 453.74 ng/ml

Instrument :
 ECD_P
 ClientSampleId :
 AR1248CCC500



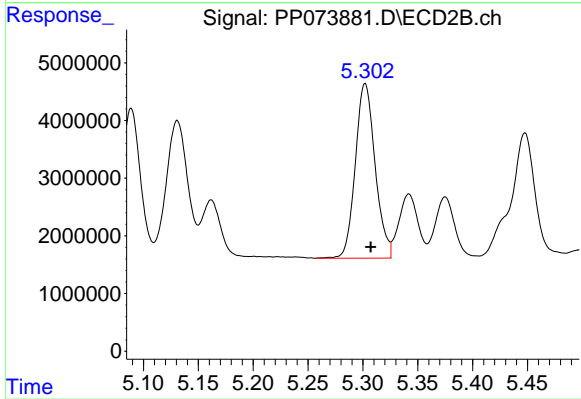
#23 AR-1248-3

R.T.: 5.131 min
 Delta R.T.: -0.005 min
 Response: 32032209
 Conc: 500.00 ng/ml



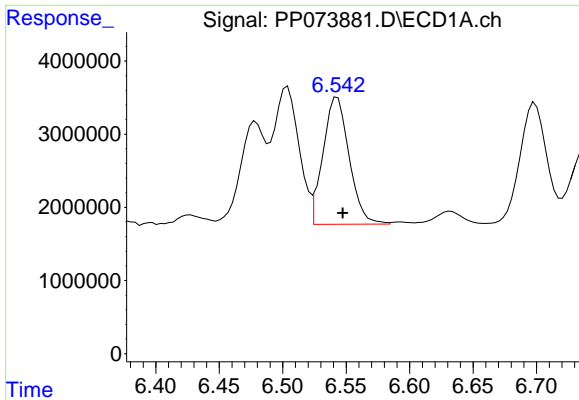
#24 AR-1248-4

R.T.: 6.504 min
 Delta R.T.: -0.005 min
 Response: 26416978
 Conc: 479.61 ng/ml



#24 AR-1248-4

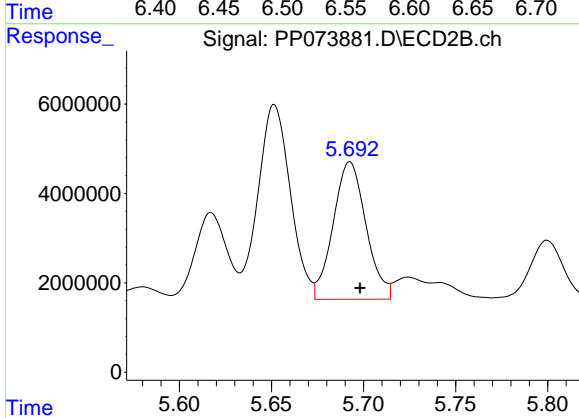
R.T.: 5.302 min
 Delta R.T.: -0.005 min
 Response: 38095884
 Conc: 505.40 ng/ml



#25 AR-1248-5

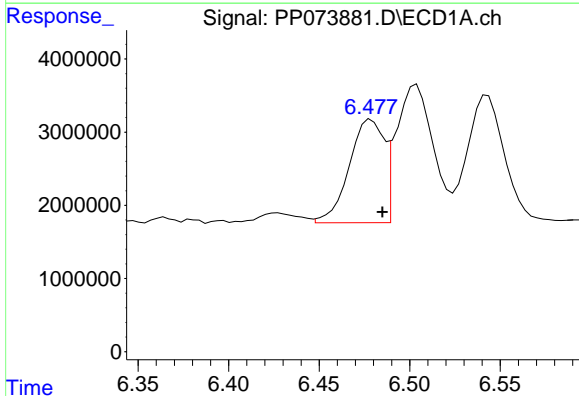
R.T.: 6.543 min
 Delta R.T.: -0.004 min
 Response: 24910184
 Conc: 463.10 ng/ml

Instrument :
 ECD_P
 ClientSampleId :
 AR1248CCC500



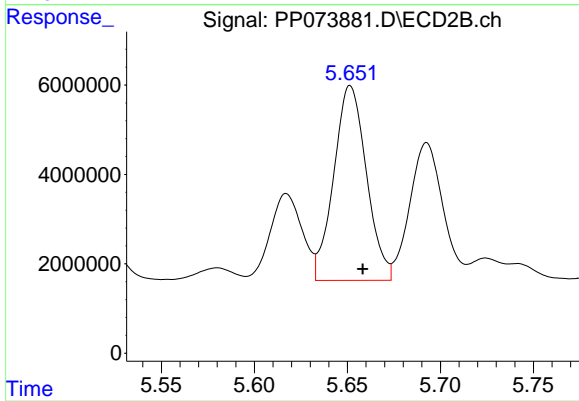
#25 AR-1248-5

R.T.: 5.693 min
 Delta R.T.: -0.006 min
 Response: 38232266
 Conc: 512.56 ng/ml



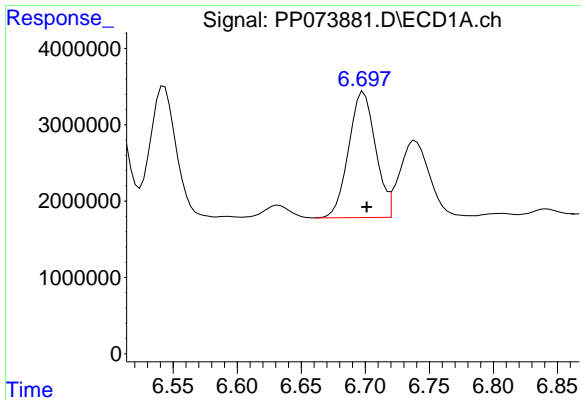
#26 AR-1254-1

R.T.: 6.479 min
 Delta R.T.: -0.006 min
 Response: 18847408
 Conc: 351.70 ng/ml



#26 AR-1254-1

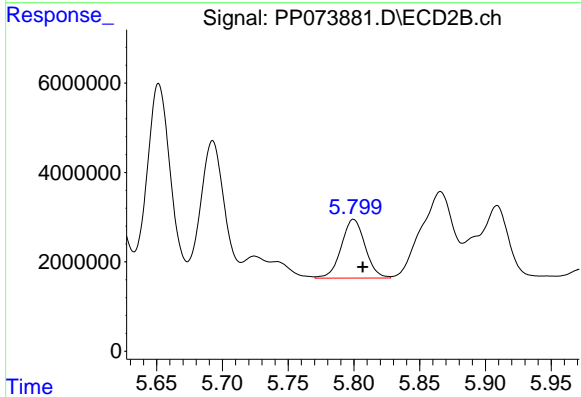
R.T.: 5.652 min
 Delta R.T.: -0.007 min
 Response: 53375788
 Conc: 460.02 ng/ml



#27 AR-1254-2

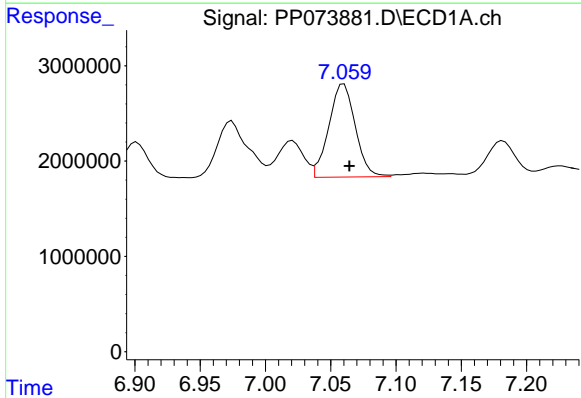
R.T.: 6.699 min
 Delta R.T.: -0.002 min
 Response: 24054008
 Conc: 288.80 ng/ml

Instrument :
 ECD_P
 ClientSampleId :
 AR1248CCC500



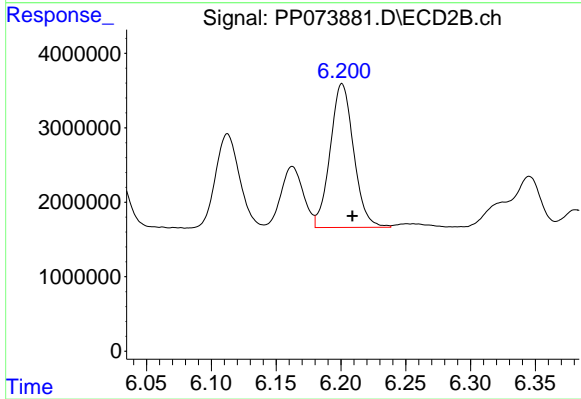
#27 AR-1254-2

R.T.: 5.800 min
 Delta R.T.: -0.007 min
 Response: 16540440
 Conc: 164.38 ng/ml



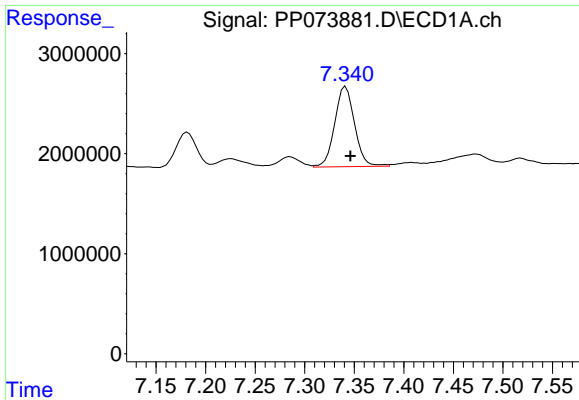
#28 AR-1254-3

R.T.: 7.060 min
 Delta R.T.: -0.004 min
 Response: 13758085
 Conc: 155.75 ng/ml



#28 AR-1254-3

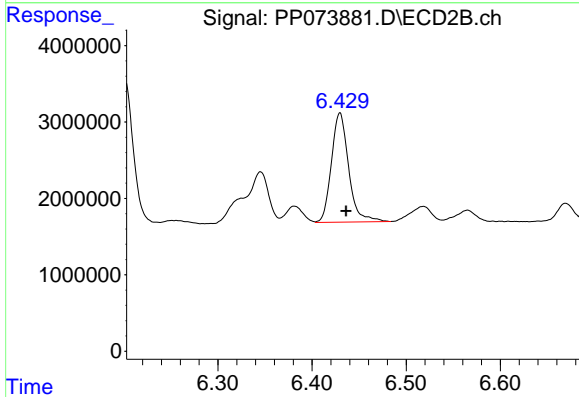
R.T.: 6.201 min
 Delta R.T.: -0.008 min
 Response: 24326041
 Conc: 157.50 ng/ml



#29 AR-1254-4

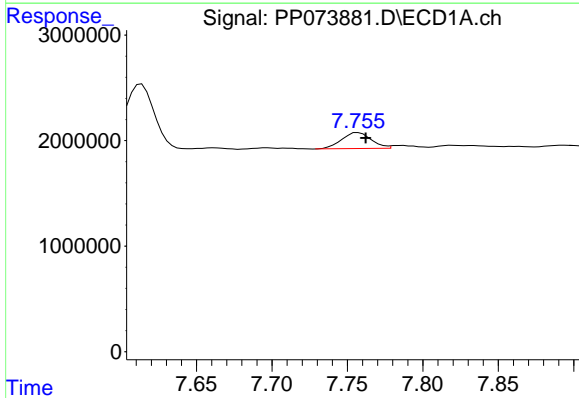
R.T.: 7.341 min
 Delta R.T.: -0.005 min
 Response: 11160389
 Conc: 141.87 ng/ml

Instrument :
 ECD_P
 ClientSampleId :
 AR1248CCC500



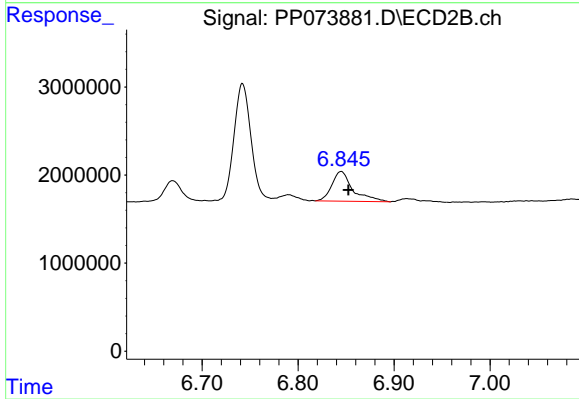
#29 AR-1254-4

R.T.: 6.430 min
 Delta R.T.: -0.007 min
 Response: 18171406
 Conc: 192.17 ng/ml



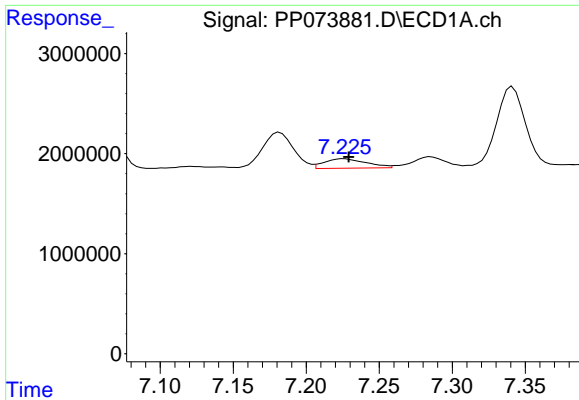
#30 AR-1254-5

R.T.: 7.757 min
 Delta R.T.: -0.005 min
 Response: 2074787
 Conc: 28.16 ng/ml



#30 AR-1254-5

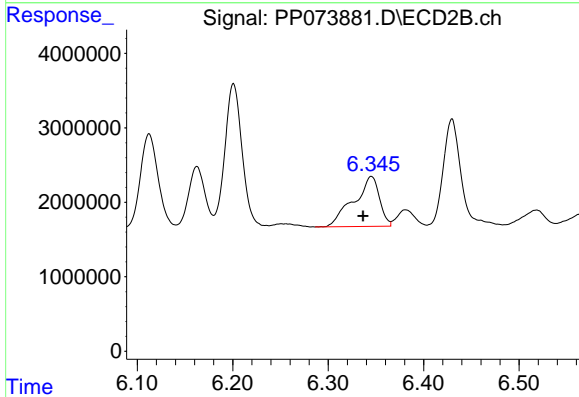
R.T.: 6.845 min
 Delta R.T.: -0.008 min
 Response: 5143204
 Conc: 38.54 ng/ml



#31 AR-1260-1

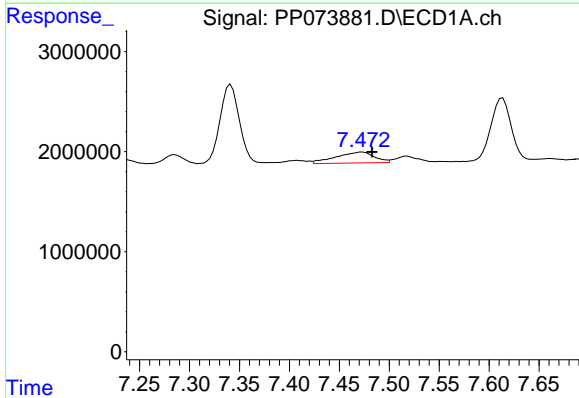
R.T.: 7.226 min
 Delta R.T.: -0.003 min
 Response: 1895202
 Conc: 32.14 ng/ml

Instrument :
 ECD_P
 ClientSampleId :
 AR1248CCC500



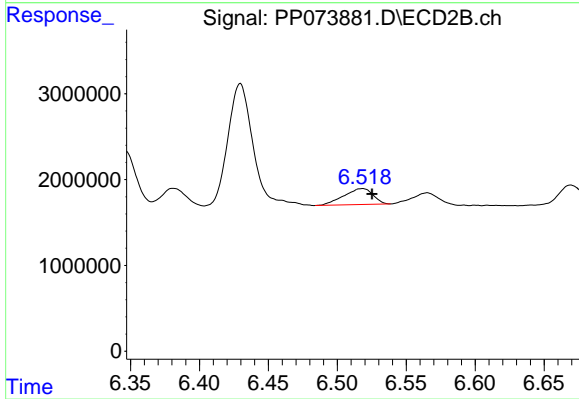
#31 AR-1260-1

R.T.: 6.345 min
 Delta R.T.: 0.009 min
 Response: 12535045
 Conc: 128.49 ng/ml



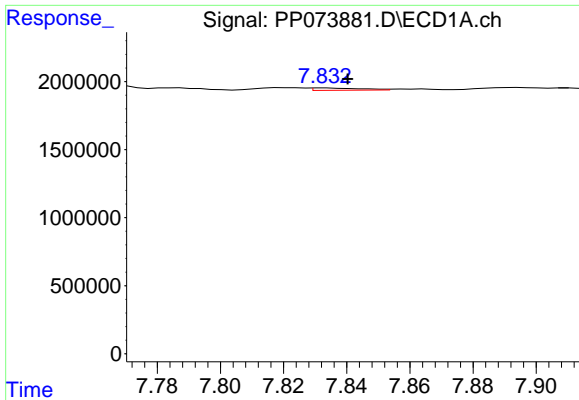
#32 AR-1260-2

R.T.: 7.473 min
 Delta R.T.: -0.010 min
 Response: 2931292
 Conc: 30.59 ng/ml



#32 AR-1260-2

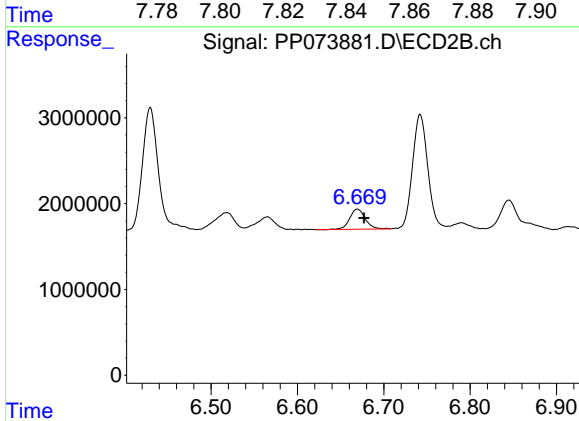
R.T.: 6.518 min
 Delta R.T.: -0.007 min
 Response: 2754677
 Conc: 22.43 ng/ml



#33 AR-1260-3

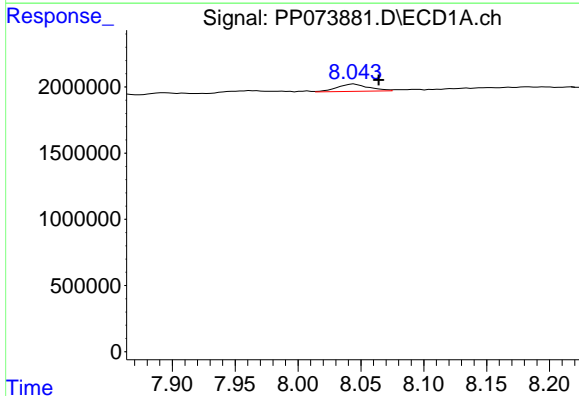
R.T.: 7.833 min
 Delta R.T.: -0.007 min
 Response: 187594
 Conc: 2.57 ng/ml

Instrument :
 ECD_P
 ClientSampleId :
 AR1248CCC500



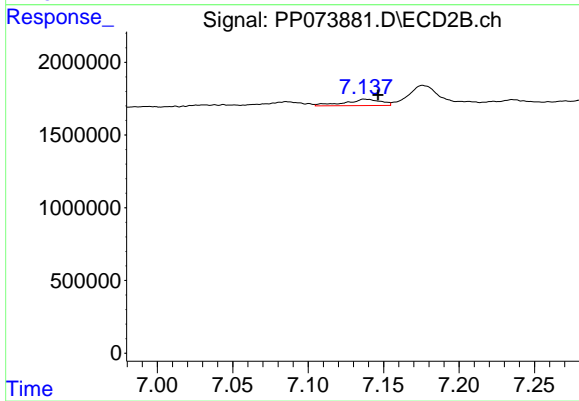
#33 AR-1260-3

R.T.: 6.669 min
 Delta R.T.: -0.008 min
 Response: 2930965
 Conc: 26.78 ng/ml



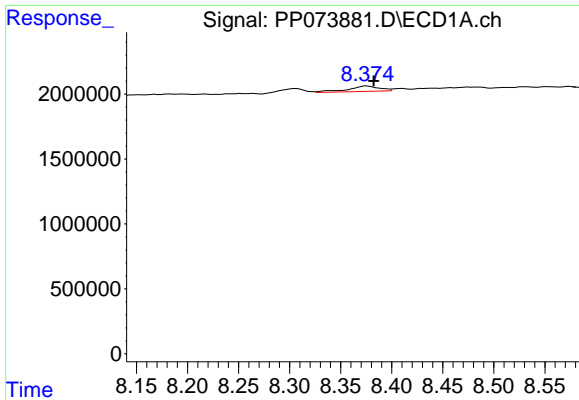
#34 AR-1260-4

R.T.: 8.045 min
 Delta R.T.: -0.019 min
 Response: 975390
 Conc: 14.94 ng/ml



#34 AR-1260-4

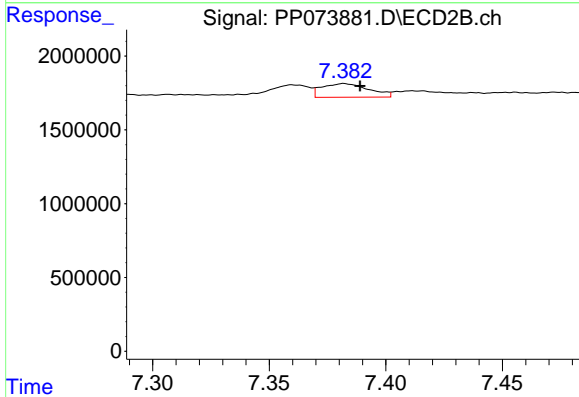
R.T.: 7.138 min
 Delta R.T.: -0.009 min
 Response: 731291
 Conc: 8.18 ng/ml



#35 AR-1260-5

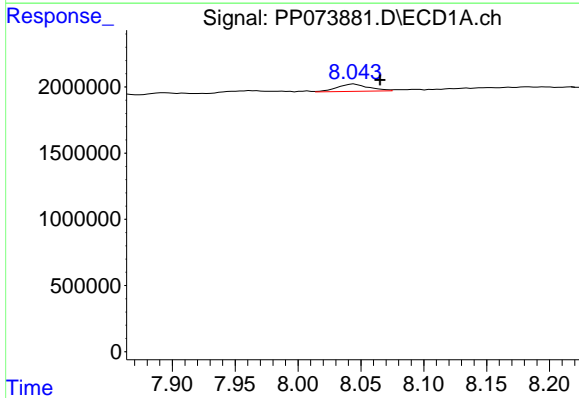
R.T.: 8.376 min
 Delta R.T.: -0.007 min
 Response: 885755
 Conc: 5.87 ng/ml

Instrument :
 ECD_P
 ClientSampleId :
 AR1248CCC500



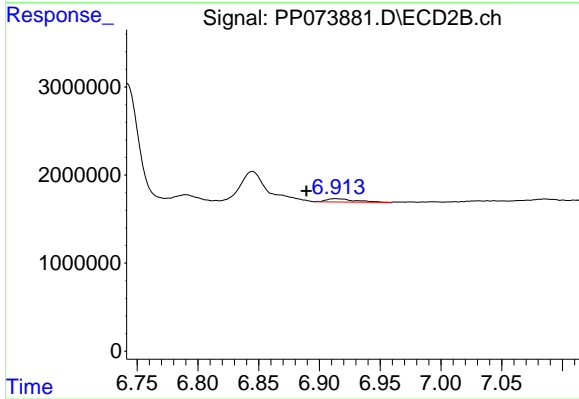
#35 AR-1260-5

R.T.: 7.382 min
 Delta R.T.: -0.007 min
 Response: 1307041
 Conc: 5.82 ng/ml



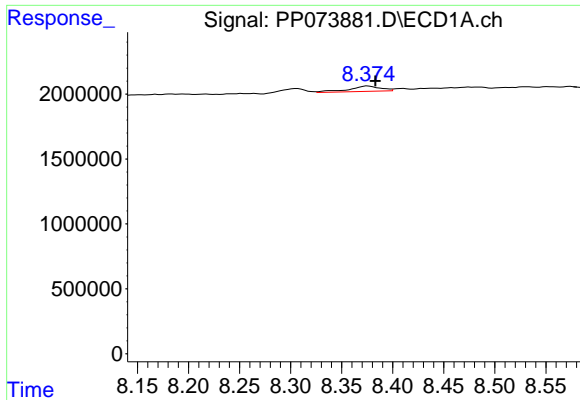
#36 AR-1262-1

R.T.: 8.045 min
 Delta R.T.: -0.020 min
 Response: 975390
 Conc: 11.21 ng/ml



#36 AR-1262-1

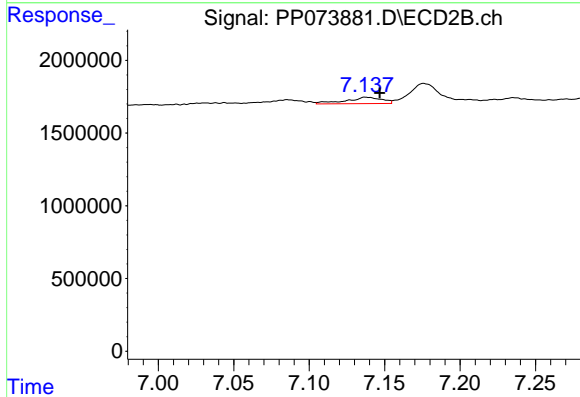
R.T.: 6.913 min
 Delta R.T.: 0.024 min
 Response: 604128
 Conc: 4.09 ng/ml



#37 AR-1262-2

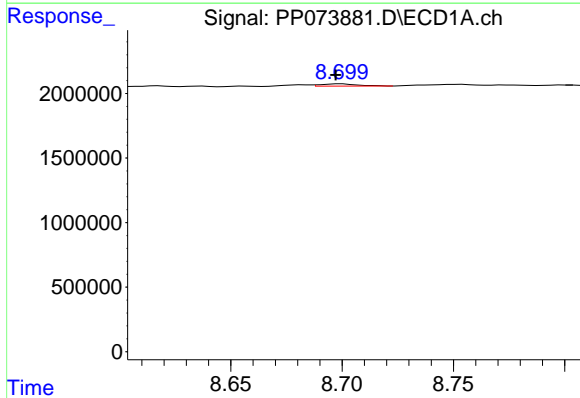
R.T.: 8.376 min
 Delta R.T.: -0.008 min
 Response: 885755
 Conc: 4.47 ng/ml

Instrument : ECD_P
 ClientSampleId : AR1248CCC500



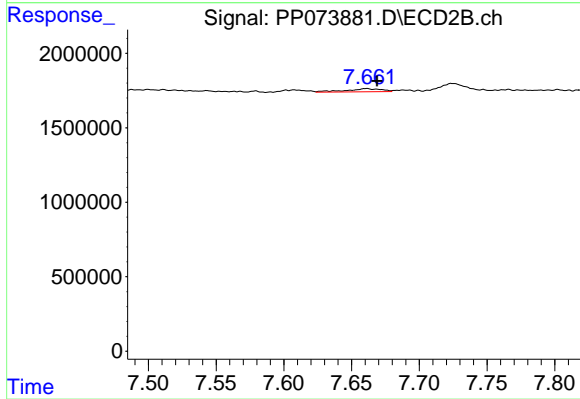
#37 AR-1262-2

R.T.: 7.138 min
 Delta R.T.: -0.009 min
 Response: 731291
 Conc: 5.72 ng/ml



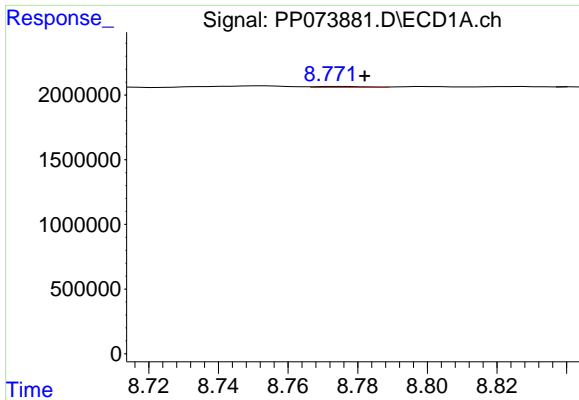
#38 AR-1262-3

R.T.: 8.700 min
 Delta R.T.: 0.003 min
 Response: 199491
 Conc: 1.59 ng/ml



#38 AR-1262-3

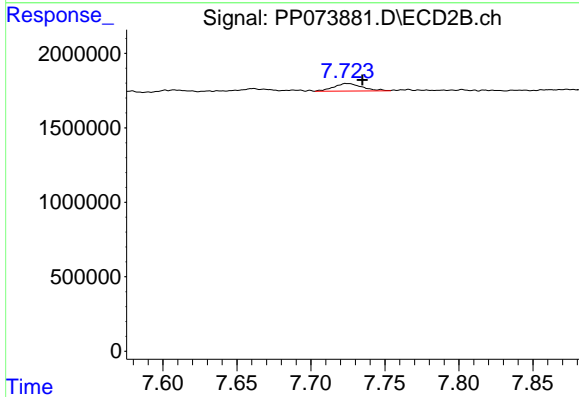
R.T.: 7.661 min
 Delta R.T.: -0.008 min
 Response: 380106
 Conc: 3.33 ng/ml



#39 AR-1262-4

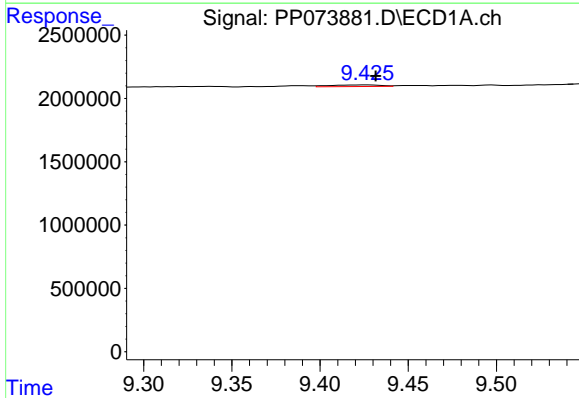
R.T.: 8.773 min
 Delta R.T.: -0.009 min
 Response: 64830
 Conc: 0.70 ng/ml

Instrument :
 ECD_P
 ClientSampleId :
 AR1248CCC500



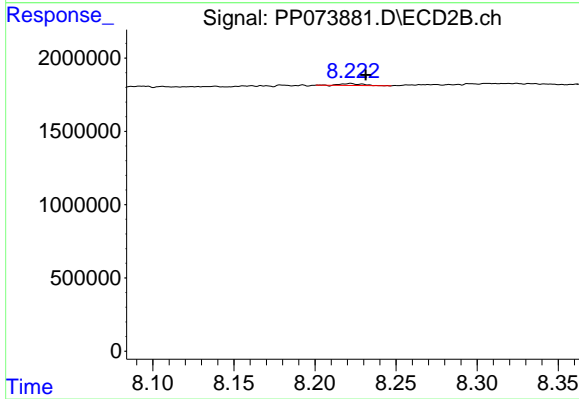
#39 AR-1262-4

R.T.: 7.725 min
 Delta R.T.: -0.010 min
 Response: 680778
 Conc: 3.70 ng/ml



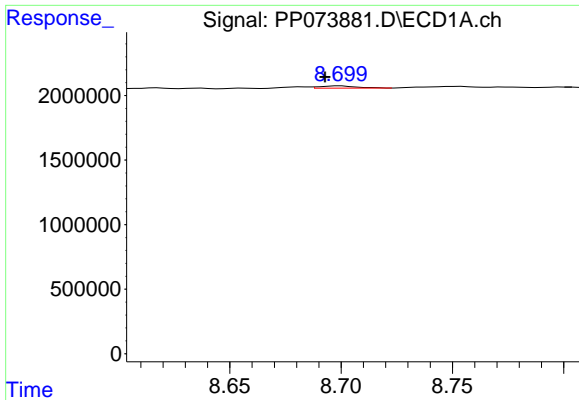
#40 AR-1262-5

R.T.: 9.427 min
 Delta R.T.: -0.004 min
 Response: 257417
 Conc: 4.06 ng/ml



#40 AR-1262-5

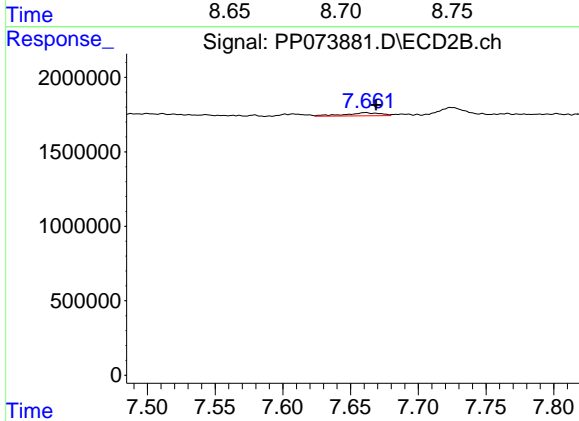
R.T.: 8.222 min
 Delta R.T.: -0.009 min
 Response: 128608
 Conc: 1.52 ng/ml



#41 AR-1268-1

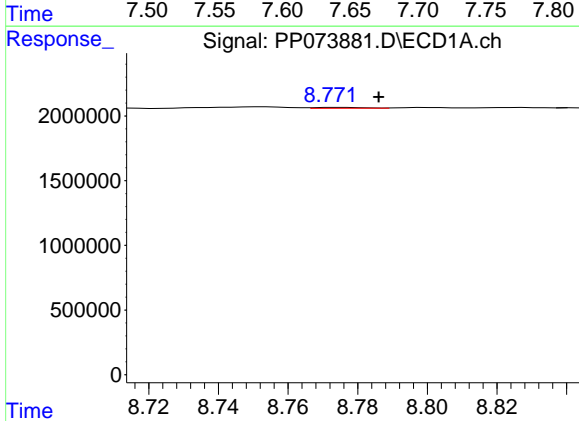
R.T.: 8.700 min
 Delta R.T.: 0.007 min
 Response: 199491
 Conc: 0.89 ng/ml

Instrument :
 ECD_P
 ClientSampleId :
 AR1248CCC500



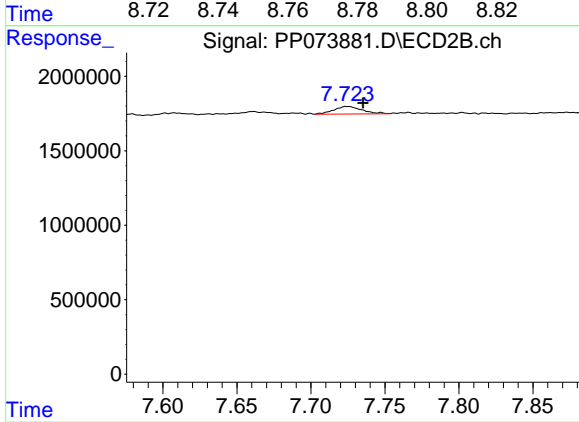
#41 AR-1268-1

R.T.: 7.661 min
 Delta R.T.: -0.008 min
 Response: 380106
 Conc: 1.24 ng/ml



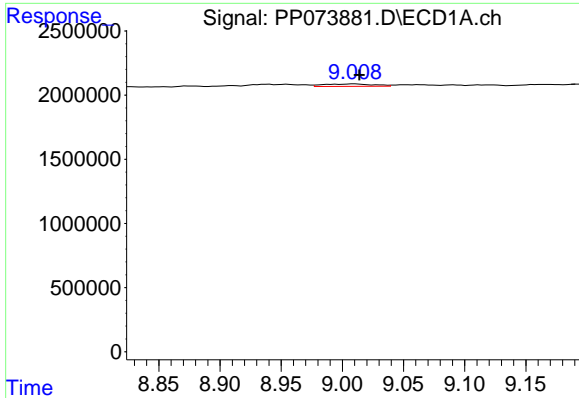
#42 AR-1268-2

R.T.: 8.773 min
 Delta R.T.: -0.013 min
 Response: 64830
 Conc: 0.34 ng/ml



#42 AR-1268-2

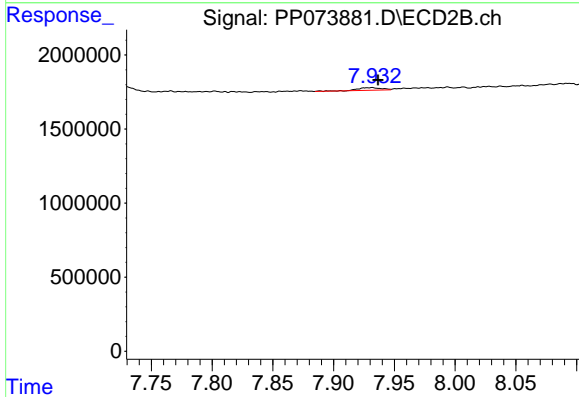
R.T.: 7.725 min
 Delta R.T.: -0.011 min
 Response: 680778
 Conc: 2.56 ng/ml



#43 AR-1268-3

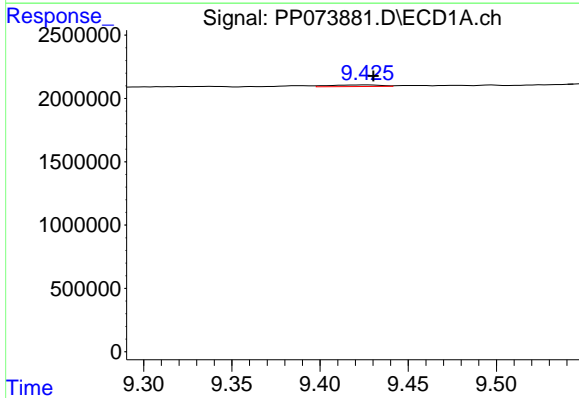
R.T.: 9.010 min
 Delta R.T.: -0.004 min
 Response: 522754
 Conc: 3.16 ng/ml

Instrument :
 ECD_P
 ClientSampleId :
 AR1248CCC500



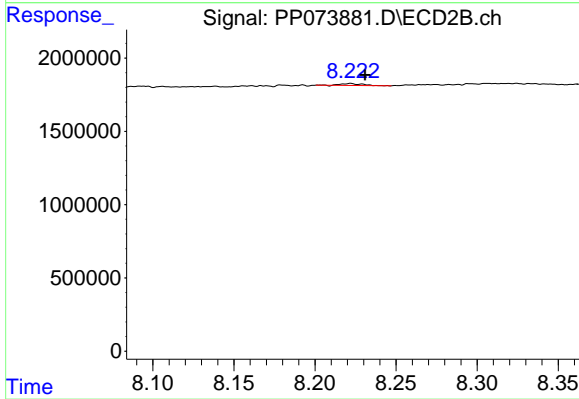
#43 AR-1268-3

R.T.: 7.932 min
 Delta R.T.: -0.005 min
 Response: 242370
 Conc: 1.07 ng/ml



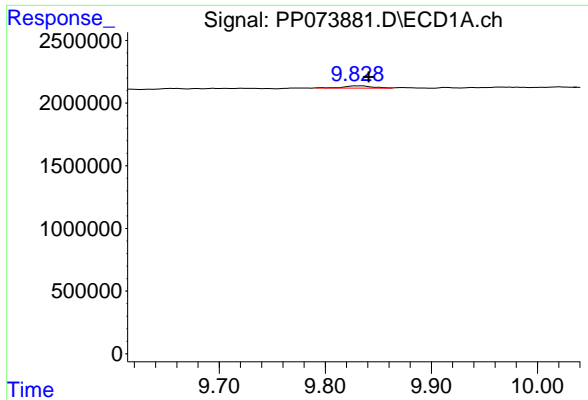
#44 AR-1268-4

R.T.: 9.427 min
 Delta R.T.: -0.003 min
 Response: 257417
 Conc: 3.70 ng/ml



#44 AR-1268-4

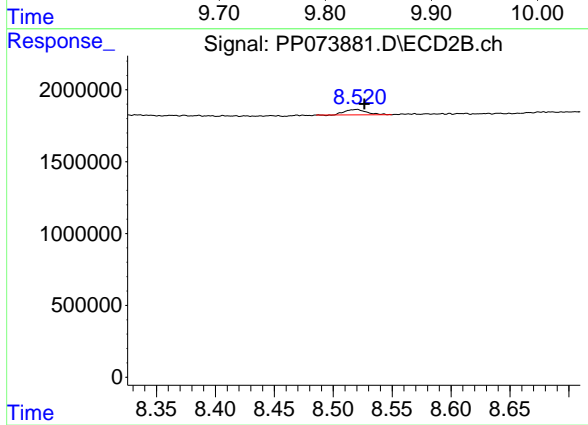
R.T.: 8.222 min
 Delta R.T.: -0.009 min
 Response: 128608
 Conc: 1.38 ng/ml



#45 AR-1268-5

R.T.: 9.830 min
 Delta R.T.: -0.011 min
 Response: 335846
 Conc: 0.73 ng/ml

Instrument : ECD_P
 ClientSampleId : AR1248CCC500



#45 AR-1268-5

R.T.: 8.520 min
 Delta R.T.: -0.007 min
 Response: 482307
 Conc: 0.78 ng/ml